



The Effects of CSF Neurogranin and APOE ϵ 4 on Cognition and Neuropathology in Mild Cognitive Impairment and Alzheimer's Disease

Yulan Fan¹, Ying Gao², Joseph Therriault³, Jing Luo¹, Maowen Ba⁴, Hua Zhang^{1*} and the Alzheimer's Disease Neuroimaging Initiative[†]

OPEN ACCESS

Edited by:

Ramesh Kandimala,
Indian Institute of Chemical
Technology (CSIR), India

Reviewed by:

Salvador Guinjoan,
Laureate Institute for Brain Research,
United States
Venkata Ajay Narendra
Talabattula,
Delaware State University,
United States

*Correspondence:

Hua Zhang
zhanghuaapro@163.com

[†]Data used in preparation of this article were obtained from the Alzheimer's Disease Neuroimaging Initiative (ADNI) database (adni.loni.usc.edu). As such, the investigators within the ADNI contributed to the design and implementation of ADNI and/or provided data but did not participate in analysis or writing of this report.

A complete listing of ADNI investigators can be found at: http://adni.loni.usc.edu/wpcontent/uploads/how_to_apply/ADNI_Acknowledgement_List.pdf

Received: 15 February 2021

Accepted: 30 March 2021

Published: 27 April 2021

Citation:

Fan Y, Gao Y, Therriault J, Luo J, Ba M and Zhang H (2021) The Effects of CSF Neurogranin and APOE ϵ 4 on Cognition and Neuropathology in Mild Cognitive Impairment and Alzheimer's Disease.
Front. Aging Neurosci. 13:667899.
doi: 10.3389/fnagi.2021.667899

¹ Department of Neurology, The First Affiliated Hospital of Chongqing Medical University, Chongqing, China, ² General Medical Wards, The Affiliated Children's Hospital of Chongqing Medical University, Chongqing, China, ³ The McGill University Research Centre for Studies in Aging, McGill University, Montreal, QC, Canada, ⁴ Department of Neurology, Yantai Yuhuangding Hospital Affiliated to Qingdao Medical University, Yantai, China

Cerebrospinal fluid (CSF) measurements of neurogranin (Ng) have emerged as a promising biomarker for cognitive decline in mild cognitive impairment (MCI) and Alzheimer's disease (AD). The apolipoprotein E ϵ 4 (APOE ϵ 4) allele is by far the most consistent genetic risk factor for AD. However, it is not known whether the pathophysiological roles of Ng in MCI or AD are related to APOE ϵ 4. We stratified 250 participants from the Alzheimer's Disease Neuroimaging Initiative (ADNI) database into cognitively normal (CN) ϵ 4 negative (CN ϵ 4⁻), CN ϵ 4 positive (CN ϵ 4⁺), MCI ϵ 4 negative (MCI ϵ 4⁻), MCI ϵ 4 positive (MCI ϵ 4⁺), AD ϵ 4 negative (AD ϵ 4⁻), and AD ϵ 4 positive (AD ϵ 4⁺). CSF Ng levels were significantly increased in APOE ϵ 4 carriers compared to APOE ϵ 4 non-carriers with MCI. In addition, CSF Ng identified MCI ϵ 4⁺ versus CN ϵ 4⁻, but not MCI ϵ 4⁻ versus CN ϵ 4⁻. Similarly, CSF Ng negatively correlated with Mini-Mental State Examination (MMSE) scores at baseline in the MCI ϵ 4⁺ group. Our findings support the use of CSF Ng as a biomarker of synaptic pathology for AD. We propose that the roles of CSF Ng in the pathophysiology of MCI may be related to APOE ϵ 4.

Keywords: Alzheimer's disease, apolipoprotein E ϵ 4, mild cognitive impairment, neurogranin, cerebrospinal fluid

INTRODUCTION

Alzheimer's disease (AD) is a leading cause of dementia. Extracellular depositions of amyloid beta (A β) peptides and intracellular neurofibrillary tangles composed of hyperphosphorylated tau are the major pathological characteristics of AD (Jack et al., 2018). The etiology and pathogenesis of AD are still unclear, but more than 15 genome-wide studies have indicated that apolipoprotein E ϵ 4 (APOE ϵ 4) allele is related to AD and is by far the most consistent genetic risk factor

Abbreviations: A β , amyloid- β ; AD, Alzheimer's disease; ADAS-cog, Alzheimer's disease assessment scale-cog; ADNI, Alzheimer's disease Neuroimaging Initiative; ANOVA, Analysis of covariance; APOE, apolipoprotein E; AUC, area under the curve; CDR, Clinical Dementia Rating scale; CN, cognitively normal; CSF, cerebrospinal fluid; FDG-PET, 18F-fluorodeoxyglucose-PET; HR, hazard ratios; MCI, mild cognitive impairment; MMSE, Mini-mental State Examination; MRI, magnetic resonance imaging; NFT, neurofibrillary tangles; Ng, neurogranin; PET, positron emission tomography; ROC, receiver operating curve; SUVR, standardized uptake value ratio.

(Bertram et al., 2010; Lambert et al., 2013). Compared with non-carriers, *APOE* $\epsilon 4$ carriers tend to show an accelerated cognitive decline.

Synaptic degeneration and dysfunction are critical pathological events in AD (DeKosky and Scheff, 1990). Synaptic loss has been identified as an important contributor to progressive cognitive decline and an early feature in AD progression (DeKosky and Scheff, 1990). Furthermore, compared with $A\beta$ deposits and neurofibrillary tangles, synapse loss in the hippocampus is more closely related to the degree of cognitive impairment (Scheff et al., 2006, 2007). Therefore, synaptic protein biomarkers are promising tools for the early diagnosis of AD. In addition, in clinical trials of disease-modifying therapies for AD, synaptic biomarkers can potentially monitor disease progression and evaluate effects of drugs on synaptic dysfunction and degeneration. Neurogranin (Ng), a post synaptic protein with 78-amino acids, plays a critical role in long-term potentiation and memory consolidation (Gerendasy and Sutcliffe, 1997; Pak et al., 2000; Huang et al., 2004), where it regulates the concentrations of calmodulin in response to intracellular calcium concentrations following neuronal excitation (Baudier et al., 1991; Xia and Storm, 2005; Díez-Guerra, 2010). Several studies have suggested that the concentrations of Ng are increased in cerebrospinal fluid (CSF) (De Vos et al., 2015; Hellwig et al., 2015; Kvartsberg et al., 2015b; Portelius et al., 2015; Janelidze et al., 2016) and decreased in the brain of patients with AD (Davidsson and Blennow, 1998; Reddy et al., 2005; Kvartsberg et al., 2019). In mild cognitive impairment (MCI) patients, high CSF Ng concentrations at baseline can predict cognitive decline during clinical follow-up (Portelius et al., 2015). Furthermore, high CSF Ng levels at baseline are associated with longitudinal reductions in hippocampal volume and cortical glucose metabolism during clinical follow-up in MCI (Portelius et al., 2015). In addition, in MCI patients who progress to dementia, increased CSF Ng concentrations are related to accelerated deterioration of Alzheimer's disease assessment scale (ADAS) (Portelius et al., 2015). Another study has also demonstrated CSF Ng is correlated with brain atrophy (Tarawneh et al., 2016).

However, the relationship between *APOE* $\epsilon 4$ and Ng is poorly understood, and it is not known whether the above-mentioned roles of Ng are related to *APOE* $\epsilon 4$. In this study, we show the results of CSF Ng in the Alzheimer's Disease Neuroimaging Initiative (ADNI) cohort, including the cognitively normal (CN) control, MCI participants, and AD-induced dementia. We verified the hypotheses that CSF Ng is increased in *APOE* $\epsilon 4$ positive individuals compared with *APOE* $\epsilon 4$ negative participants in each diagnostic group. We also report that CSF Ng reflects neurodegeneration dependently of *APOE* $\epsilon 4$.

MATERIALS AND METHODS

Database Description

Data used in preparation of this article were obtained from the ADNI database. The ADNI was launched in 2003 as

a public-private partnership, led by Principal Investigator Michael W. Weiner, MD. The primary goal of ADNI has been to test whether serial MRI, positron emission tomography (PET), biological markers, and clinical and neuropsychological assessments can be combined to measure the progression of MCI and early AD. Further information can be found at <http://www.adni-info.org> (Zhang et al., 2018).

From the database, we selected all subjects between 55 and 90 (inclusive) years of age who had completed a lumbar puncture, clinical and neuropsychological evaluations, MRI, and FDG-PET. According to clinical and behavioral measures provided by ADNI, the individuals included in the study were classified as CN ($n = 65$), MCI ($n = 122$), and AD ($n = 63$). Individuals who have at least one $\epsilon 4$ allele were considered as $\epsilon 4$ carriers. According to whether the subjects carried $\epsilon 4$, they were divided into CN $\epsilon 4$ negative (CN $\epsilon 4-$, $n = 48$), CN $\epsilon 4$ positive (CN $\epsilon 4+$, $n = 17$), MCI $\epsilon 4$ negative (MCI $\epsilon 4-$, $n = 50$), MCI $\epsilon 4$ positive (MCI $\epsilon 4+$, $n = 72$), AD $\epsilon 4$ negative (AD $\epsilon 4-$, $n = 17$), and AD $\epsilon 4$ positive (AD $\epsilon 4+$, $n = 46$).

Classification Criteria

Cognitively normal individuals had MMSE scores ranging between 24 and 30, and a Clinical Dementia Rating scale (CDR) score of 0 (Folstein et al., 1975; Berg, 1988). Subjects with MCI had subjective memory complaints, an MMSE score from 24 to 30, a CDR of 0.5, remained activities of daily living, and no dementia (Aisen et al., 2010). Apart from the NINCDS/ADRDA criteria, the MMSE scores of AD dementia patients were between 20 and 26, and the CDR was 0.5 or 1.0 (Tierney et al., 1988; Zhang et al., 2018) [For more information on inclusion/exclusion criteria, please visit www.adni-info.org (accessed December 2020)].

Standard Protocol Approvals and Patient Consents

The ADNI study was approved by the Institutional Review Boards of all the participating institutions. Informed written consent was obtained from all subjects at each center (Zhang et al., 2018).

Analyses of CSF $A\beta 42$, T-Tau, P-Tau, and Ng

As described elsewhere, the use of multiple xMAP-Luminex platforms and Innogenetics INNO-BIA AlzBio3 immunoassay reagents were used for the quantification of CSF $A\beta 42$, T-tau, and P-tau phosphorylated at threonine 181 (Shaw et al., 2009). The Ng-specific monoclonal antibody Ng7 was used as the coating antibody, and the polyclonal Ng anti-rabbit antibody was used as the detection antibody. Electrochemiluminescence technology was used to analyze CSF-Ng. Values are expressed in pg/ml. All CSF data used in the present study were from the ADNI files "UPENNBIOMK5-8.csv" and "BLENNOWCSFNG.csv," (accessed December 2020). For more detailed information on the ADNI method for CSF collection, quantification, and quality control procedures, please visit www.adni-info.org.

Cognitive Evaluation

Mini-Mental State Examination and ADAS-Cog 11 scores were used to assess overall cognitive abilities. Because of the lack availability of some follow-up data, we only collected baseline scores of MMSE and ADAS-cog 11. The data utilized in the present study were from ADNI files “MMSE.csv” and “ADAS_ADNI1.csv,” (accessed December 2020).

Neuroimaging Methods

Hippocampal and ventricular volumes were used to assess neurodegeneration. These data came from the ADNI files “FOXLABBSI_08_04_17.csv” and “UCSDVOL.csv,” (accessed December 2020). We also only selected baseline imaging data because there were too many missing data during the follow-up period. ADNI’s neuroimaging methods have been described in detail elsewhere (Risacher and Saykin, 2013). For more detailed information about ADNI image acquisition and processing, please visit www.adni-info.org/methods.

FDG-PET

Acquisition and processing of PET imaging data in ADNI is described in detail elsewhere^{1,2}, respectively. For detailed instructions, see Landau et al. (2012). Briefly, FDG standardized uptake value ratio (SUVR) value for each participant was estimated as the mean SUVR of the lateral and medial prefrontal, anterior cingulate, posterior cingulate, lateral parietal, and lateral temporal cortices.

Statistical Methods

On baseline demographics, chi-square analyses, and analysis of covariance (ANOVA) were employed for categorical variables and for continuous variables, respectively. Multivariable linear regression (adjusted for age and gender) were used to detect CSF Ng levels in each diagnostic group. To assess the potential influence of *APOE* $\epsilon 4$, we used an interaction term between *APOE* $\epsilon 4$ positivity and diagnosis as a predictor in the statistical models.

Spearman correlations were used to assess relationships between Ng and other core AD biomarkers. For each biomarker, ROC analyses (adjusted for age and gender) were employed for diagnostic accuracy (area under the receiver operator characteristics curve, AUC). Bootstrapping method was used to assess the potential differences between two AUCs derived from all pairs of two different biomarkers.

The relationships between Ng and the incidence of AD were evaluated by calculating hazard ratios (HR) with 95% CIs using Cox proportional hazard regression analyses adjusting for age, gender, and $A\beta 42$. In Cox proportional hazards regression analysis, Ng status was divided into two groups according to the median of each biomarker.

For MMSE, ADAS-cog 11, hippocampal volume, ventricular volume, and FDG-PET SUVR, linear mixed effects models were used to obtain intercept (baseline values). The intercept was then used as outcomes in subsequent linear regression models with

Ng as predictor (adjusted for age, gender, and $A\beta 42$; and for education for MMSE and ADAS-cog 11; and for intracranial volumes for hippocampal volumes and ventricular volumes) within diagnostic groups. All outcome variables in linear mixed-effects models used normalized values to facilitate comparisons between modalities (Zhang et al., 2018). All statistics were done using R (v. 3.4.2) and SPSS version 21. The statistical significance of all analyses was defined as $p < 0.05$.

RESULTS

Characteristics of Subjects

Demographics, clinical, and biomarker features of the study subjects are shown in **Table 1**. We did not observe statistically significant differences in age or education among the groups. Compared with the CN $\epsilon 4-$ and AD $\epsilon 4-$ groups, there were significantly fewer female subjects in the MCI $\epsilon 4-$ group ($p = 0.007$, $p = 0.024$, respectively). Between CN $\epsilon 4-$ and CN $\epsilon 4+$ ($p = 0.001$) and between MCI $\epsilon 4-$ and MCI $\epsilon 4+$ ($p < 0.001$), CSF $A\beta 42$ levels were significantly lower in *APOE* $\epsilon 4$ positive subjects. There was no similar phenomenon between AD $\epsilon 4-$ and AD $\epsilon 4+$ ($p = 0.438$). Between MCI $\epsilon 4-$ and MCI $\epsilon 4+$, CSF total-tau (T-tau) ($p = 0.002$) and phosphorylated-tau (P-tau) ($p = 0.001$) in *APOE* $\epsilon 4$ positive participants increased significantly. However, there was no similar finding between CN $\epsilon 4-$ and CN $\epsilon 4+$, or between AD $\epsilon 4-$ and AD $\epsilon 4+$. MMSE scores were lower in MCI $\epsilon 4-$, MCI $\epsilon 4+$, AD $\epsilon 4-$, and AD $\epsilon 4+$ groups compared with CN $\epsilon 4-$ and CN $\epsilon 4+$ subjects, and lower in AD $\epsilon 4-$ and AD $\epsilon 4+$ groups compared with MCI $\epsilon 4-$ and MCI $\epsilon 4+$. ADAS-Cog 11 scores were higher in MCI $\epsilon 4-$, MCI $\epsilon 4+$, AD $\epsilon 4-$, and AD $\epsilon 4+$ compared to CN $\epsilon 4-$ and CN $\epsilon 4+$, and higher in AD $\epsilon 4-$ and AD $\epsilon 4+$ compared with MCI $\epsilon 4-$ and MCI $\epsilon 4+$.

CSF Ng Concentrations in *APOE* $\epsilon 4$ Positive and Negative Participants in Every Diagnostic Group

Cerebrospinal fluid Ng levels were significantly higher in MCI $\epsilon 4+$, AD $\epsilon 4-$, and AD $\epsilon 4+$ (all $p < 0.001$) compared to CN $\epsilon 4-$ (**Figure 1**). Higher Ng concentrations were observed in MCI $\epsilon 4+$ ($p < 0.05$) and AD $\epsilon 4-$ ($p < 0.05$) compared to CN $\epsilon 4+$ (**Figure 1**). Between MCI $\epsilon 4-$ and MCI $\epsilon 4+$, CSF Ng levels in *APOE* $\epsilon 4$ positive participants increased significantly ($p < 0.001$) (**Figure 1**), but there were no statistically significant differences between CN $\epsilon 4-$ and CN $\epsilon 4+$ as well as between AD $\epsilon 4-$ and AD $\epsilon 4+$ (**Figure 1**).

CSF Ng Levels in Relation to CSF $A\beta$ and Tau

We observed negative correlations between Ng and $A\beta 42$ in CN $\epsilon 4-$ participants ($r = -0.353$, $p = 0.014$) (**Figure 2A**). However, there were no statistically significant relationships between Ng and $A\beta 42$ in CN $\epsilon 4+$ ($r = -0.095$, $p = 0.717$), MCI $\epsilon 4-$ ($r = -0.194$, $p = 0.177$), MCI $\epsilon 4+$ ($r = -0.023$, $p = 0.845$), AD $\epsilon 4-$ ($r = 0.172$, $p = 0.509$), and AD $\epsilon 4+$ ($r = 0.080$, $p = 0.596$) (**Figure 2A**). Ng was strongly correlated with T-tau and P-tau in

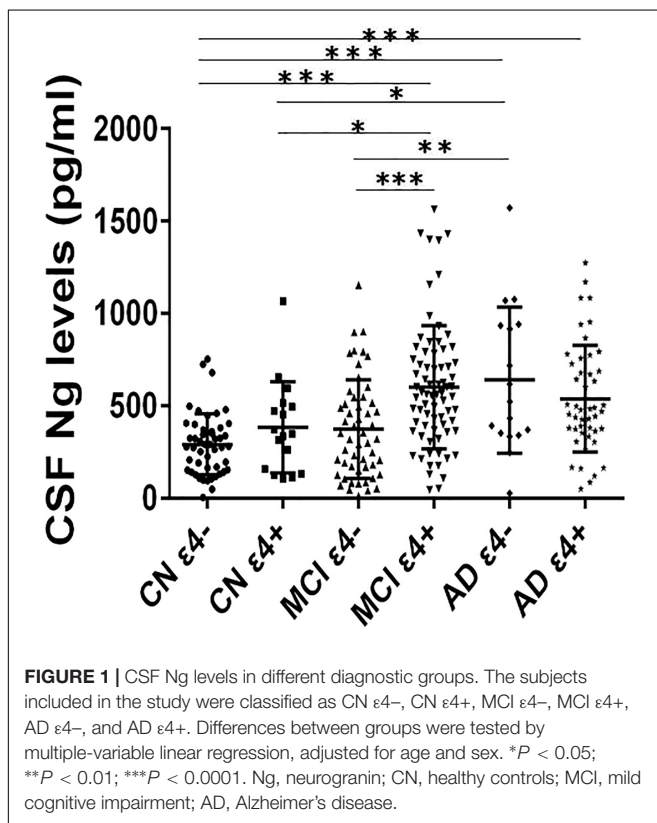
¹adni.loni.usc.edu

²www.adni-info.org

TABLE 1 | Main demographics of subjects at baseline.

Characteristics	CN $\epsilon 4-$ (n = 48)	CN $\epsilon 4+$ (n = 17)	MCI $\epsilon 4-$ (n = 50)	MCI $\epsilon 4+$ (n = 72)	AD $\epsilon 4-$ (n = 17)	AD $\epsilon 4+$ (n = 46)
Age (years)	74.9 (0.7)	75.7 (1.4)	72.9 (1.2)	73.0 (0.8)	73.1 (2.3)	74.2 (1.1)
Sex (female %)	26 (54.2%) ^c	6 (35.3%)	14 (28.0%) ^{a,e}	31 (43.1%)	10 (58.8%) ^c	21 (45.7%)
Education (years)	15.7 (0.4)	15.7 (0.9)	15.5 (0.5)	15.7 (0.3)	15.7 (0.7)	14.7 (0.4)
CSF A β 42 (pg/ml)	1128.4 (53.8) ^{b,c,d,e,f}	768.2 (70.0) ^{a,f}	902.2 (57.2) ^{a,d,f}	632.5 (30.3) ^{a,c}	729.5 (67.7) ^{a,f}	538.7 (20.7) ^{a,b,c,e}
CSF T-tau (pg/ml)	215.6 (8.0) ^{d,e,f}	267.8 (25.5) ^{d,e,f}	273.1 (16.8) ^{d,e}	351.9 (14.3) ^{a,b,c}	391.2 (42.1) ^{a,b,c}	344.1 (15.3) ^{a,b}
CSF P-tau (pg/ml)	19.9 (0.9) ^{d,e,f}	26.4 (2.8) ^{d,e}	26.4 (1.9) ^{d,e}	36.1 (1.7) ^{a,b,c}	39.4 (4.8) ^{a,b,c}	34.7 (1.6) ^a
MMSE	29.3 (0.1) ^{c,d,e,f}	29.0 (0.2) ^{c,d,e,f}	26.8 (0.3) ^{a,b,e,f}	26.9 (0.2) ^{a,b,e,f}	23.9 (0.4) ^{a,b,c,d}	23.1 (0.3) ^{a,b,c,d}
ADAS-cog 11	6.4 (0.4) ^{c,d,e,f}	7.5 (0.8) ^{c,d,e,f}	10.9 (0.7) ^{a,b,e,f}	12.4 (0.6) ^{a,b,e,f}	18.8 (1.7) ^{a,b,c,d}	18.4 (0.8) ^{a,b,c,d}

Measurement data are expressed by mean and standard error. P-values indicate the values assessed with analyses of variance for each variable except gender, where a contingency chi-square was performed. Post hoc analysis provided significant differences between groups: ^afrom CN $\epsilon 4-$; ^bfrom CN $\epsilon 4+$; ^cfrom MCI $\epsilon 4-$; ^dfrom MCI $\epsilon 4+$; ^efrom AD $\epsilon 4-$; ^ffrom AD $\epsilon 4+$ (at threonine 181). CSF, cerebrospinal fluid; T-tau, total-tau; P-tau, phosphorylated-tau at threonine 181; MMSE, Mini-Mental State Examination; ADAS-cog 11, Alzheimer's disease assessment scale-cog 11; CN, cognitively normal; MCI, mild cognitive impairment; AD, Alzheimer's disease.



CN $\epsilon 4-$ ($r = 0.550$, $p < 0.001$; $r = 0.519$, $p < 0.001$, respectively), CN $\epsilon 4+$ ($r = 0.858$, $p < 0.001$; $r = 0.841$, $p < 0.001$, respectively), MCI $\epsilon 4-$ ($r = 0.799$, $p < 0.001$; $r = 0.784$, $p < 0.001$, respectively), MCI $\epsilon 4+$ ($r = 0.746$, $p < 0.001$; $r = 0.726$, $p < 0.001$, respectively), AD $\epsilon 4-$ ($r = 0.869$, $p < 0.001$; $r = 0.906$, $p < 0.001$, respectively), and AD $\epsilon 4+$ subjects ($r = 0.747$, $p < 0.001$; $r = 0.726$, $p < 0.001$, respectively) (Figures 2B,C).

Diagnostic Accuracy of CSF Ng, T-Tau, and P-Tau

Receiver operating curve (ROC) analyses were carried out to detect CSF biomarkers related to clinical diagnoses in

CN $\epsilon 4+$, MCI $\epsilon 4-$, MCI $\epsilon 4+$, AD $\epsilon 4-$, and AD $\epsilon 4+$. Compared to CN $\epsilon 4-$, CSF Ng, T-tau, and P-tau had high diagnostic accuracy for MCI $\epsilon 4+$ (Table 2 and Figure 3B), AD $\epsilon 4-$ (Table 2 and Figure 3C), and AD $\epsilon 4+$ (Table 2 and Figure 3D) but not MCI $\epsilon 4-$ (Table 2 and Figure 3A). CSF Ng did not have diagnostic accuracy for CN $\epsilon 4+$ (Table 2). The diagnostic accuracy of CSF Ng for MCI $\epsilon 4+$, AD $\epsilon 4-$, and AD $\epsilon 4+$ was almost the same as that of CSF T-tau and P-tau (Table 2 and Figures 3B–D). However, compared to T-tau and P-tau, combination of Ng, T-tau or P-tau did not significantly improve the diagnostic accuracy for MCI $\epsilon 4-$, MCI $\epsilon 4+$, AD $\epsilon 4-$, and AD $\epsilon 4+$ (Table 2 and Figures 3A–D).

CSF Ng and Conversion From CN to MCI or AD and From MCI to AD

Among the subjects with longitudinal assessments, 18 CN individuals progressed to MCI or AD and 73 MCI participants progressed to AD during follow-up. We investigated whether CSF Ng predicted conversion from CN to MCI or AD and from MCI to AD. Cox proportional hazard models were performed for Ng as a continuous variable. HRs were then calculated for Ng as a dichotomized variable using median values of Ng as a threshold (adjusting for education, gender, and age). CSF Ng did not significantly predict conversion from CN to MCI or AD (Figure 4A), or from MCI to AD (Figure 4B).

CSF Ng and APOE $\epsilon 4$ in Relation to Cognition

High CSF Ng levels were related to lower Mini-Mental State Examination (MMSE) scores at baseline in the MCI $\epsilon 4+$ group ($\beta = -0.18$, $p = 0.036$), but not in the MCI $\epsilon 4-$ group, or other groups (Figure 5A). We did not observe significant correlations between CSF Ng and ADAS-cog 11 at baseline in any diagnostic group (Figure 5B). Although there was a trend for associations between CSF Ng and with ADAS-cog 11 in the AD $\epsilon 4-$ group, this did not reach statistical difference ($\beta = -0.22$, $p = 0.064$) (Figure 5B).

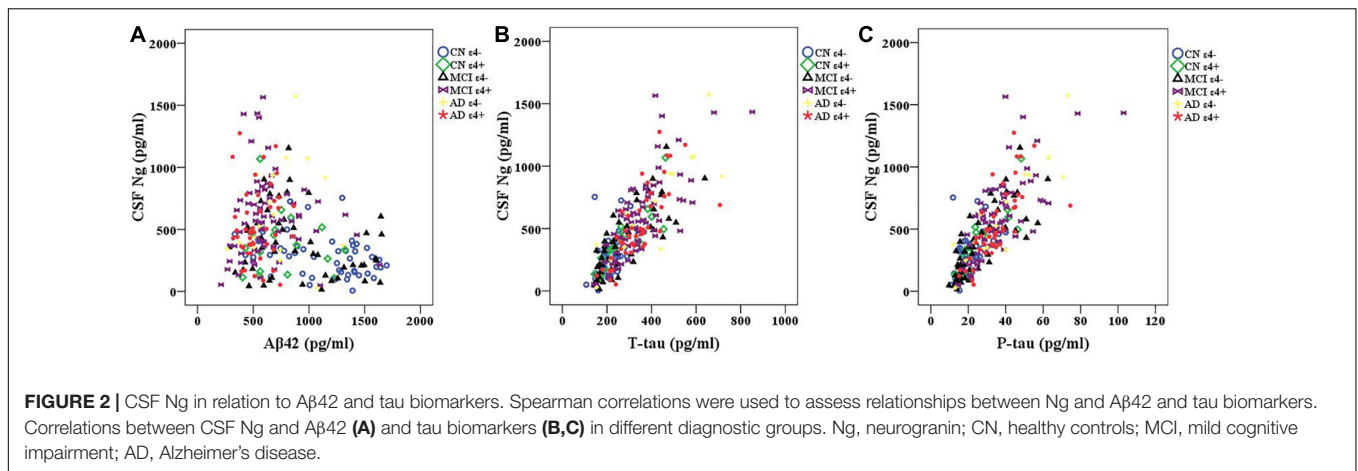


FIGURE 2 | CSF Ng in relation to Aβ42 and tau biomarkers. Spearman correlations were used to assess relationships between Ng and Aβ42 and tau biomarkers. Correlations between CSF Ng and Aβ42 (A) and tau biomarkers (B,C) in different diagnostic groups. Ng, neurogranin; CN, healthy controls; MCI, mild cognitive impairment; AD, Alzheimer’s disease.

TABLE 2 | AUC of CSF biomarkers.

	Ng	T-tau	P-tau	Ng+ T-tau	Ng+ P-tau	Ng+ T-tau+ P-tau
CN ε4+	0.613 (0.443–0.782) ($\rho = 0.170$)	0.624 (0.450–0.799) ($\rho = 0.130$)	0.672 (0.516–0.827) ($\rho = 0.037$)	0.626 (0.453–0.800) ($\rho = 0.124$)	0.669 (0.513–0.825) ($\rho = 0.039$)	0.718 (0.578–0.859) ($\rho = 0.008$)
MCI ε4–	0.585 (0.469–0.700) ($\rho = 0.148$)	0.606 (0.493–0.720) ($\rho = 0.070$)	0.613 (0.498–0.724) ($\rho = 0.058$)	0.600 (0.486–0.715) ($\rho = 0.087$)	0.612 (0.500–0.725) ($\rho = 0.055$)	0.603 (0.489–0.717) ($\rho = 0.078$)
MCI ε4+	0.808 (0.730–0.887) ($\rho < 0.001$)	0.875 (0.812–0.937) ($\rho < 0.001$)	0.881 (0.819–0.943) ($\rho < 0.001$)	0.876 (0.814–0.938) ($\rho < 0.001$)	0.881 (0.820–0.942) ($\rho < 0.001$)	0.881 (0.820–0.942) ($\rho < 0.001$)
AD ε4–	0.809 (0.676–0.941) ($\rho < 0.001$)	0.827 (0.686–0.968) ($\rho < 0.001$)	0.824 (0.677–0.970) ($\rho < 0.001$)	0.825 (0.683–0.967) ($\rho < 0.001$)	0.819 (0.672–0.965) ($\rho < 0.001$)	0.833 (0.699–0.968) ($\rho < 0.001$)
AD ε4+	0.783 (0.687–0.878) ($\rho < 0.001$)	0.879 (0.809–0.949) ($\rho < 0.001$)	0.888 (0.821–0.955) ($\rho < 0.001$)	0.880 (0.811–0.949) ($\rho < 0.001$)	0.889 (0.822–0.956) ($\rho < 0.001$)	0.888 (0.821–0.956) ($\rho < 0.001$)

AUC, area under the receiver operator characteristics curve; Ng, neurogranin; T-tau, total-tau; P-tau, phosphorylated-tau at threonine 181; CN, cognitively normal; MCI, mild cognitive impairment; AD, Alzheimer’s disease.

CSF Ng and APOE ε4 in Relation to Brain Structure

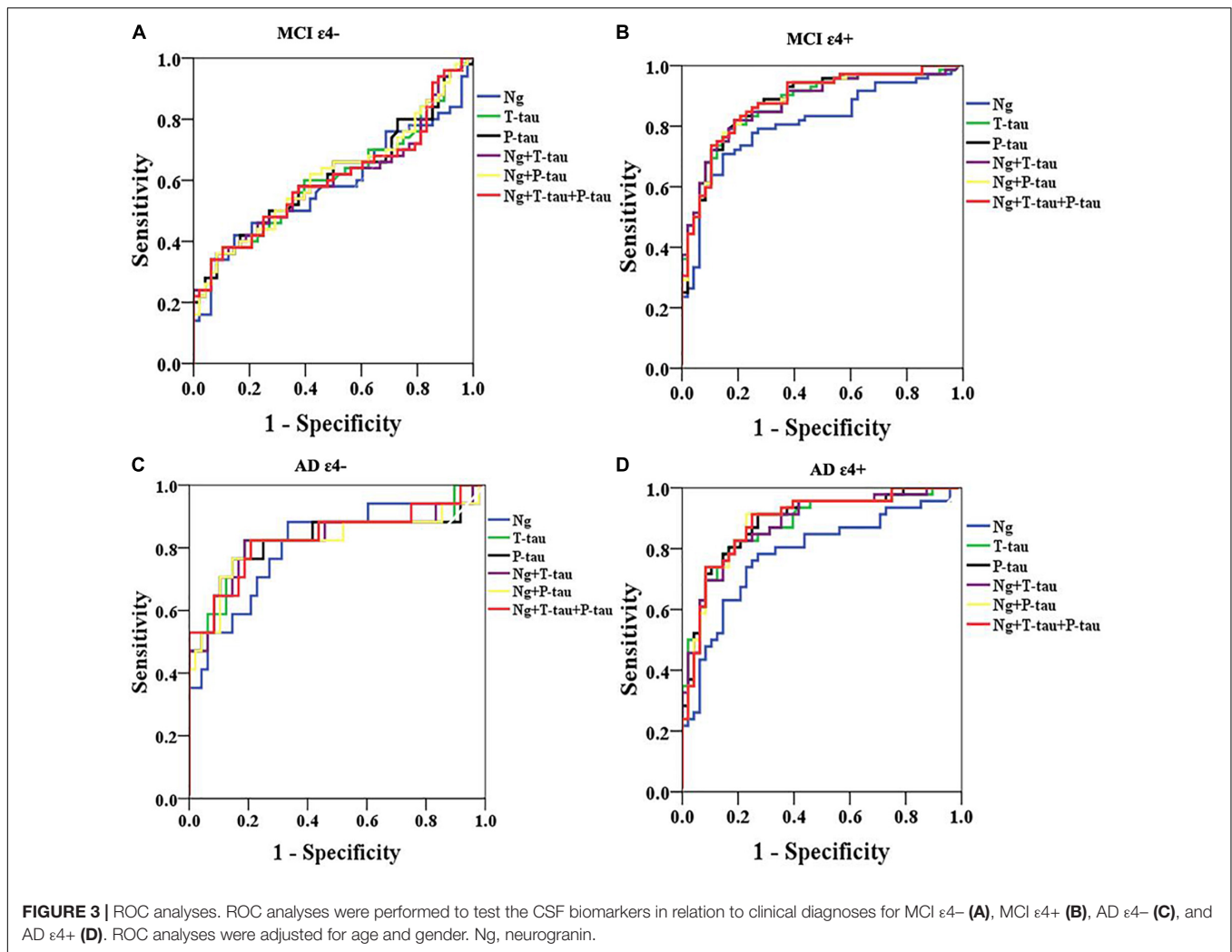
Cerebrospinal fluid Ng did not correlate with baseline 18F-fluorodeoxyglucose-positron emission tomography (FDG-PET) or ventricular volumes in different diagnostic groups (Figures 6A,B). High CSF Ng levels were related to low hippocampal volumes in the MCI ε4– ($\beta = -0.39, p = 0.007$), the MCI ε4+ ($\beta = -0.25, p = 0.036$), and the AD ε4+ ($\beta = -0.42, p = 0.003$) (Figure 6C), but in the AD ε4– and other groups, no such associations were found (Figure 6C).

DISCUSSION

This study assessed the characteristics of CSF Ng in individuals with MCI or AD from the ADNI database. The study has four main findings: first, the levels of Ng in APOE ε4 positive participants were significantly higher in MCI ε4+ compared with MCI ε4–. However, there was no similar finding between CN ε4– and CN ε4+, or between AD ε4– and AD ε4+. Secondly, CSF Ng was strongly related to T-tau and P-tau but not Aβ42

in every diagnostic group. Our third main finding is that CSF Ng had almost identical diagnostic accuracy for MCI ε4+, AD ε4–, and AD ε4+ as did with T-tau and P-tau. However, the combination of Ng, T-tau or P-tau did not significantly improve diagnostic accuracy. Finally, high CSF Ng levels only associated with low MMSE scores at baseline in the MCI ε4+ group. Moreover, CSF Ng correlated with hippocampal volumes at baseline in the MCI ε4–, MCI ε4+, and AD ε4+ groups.

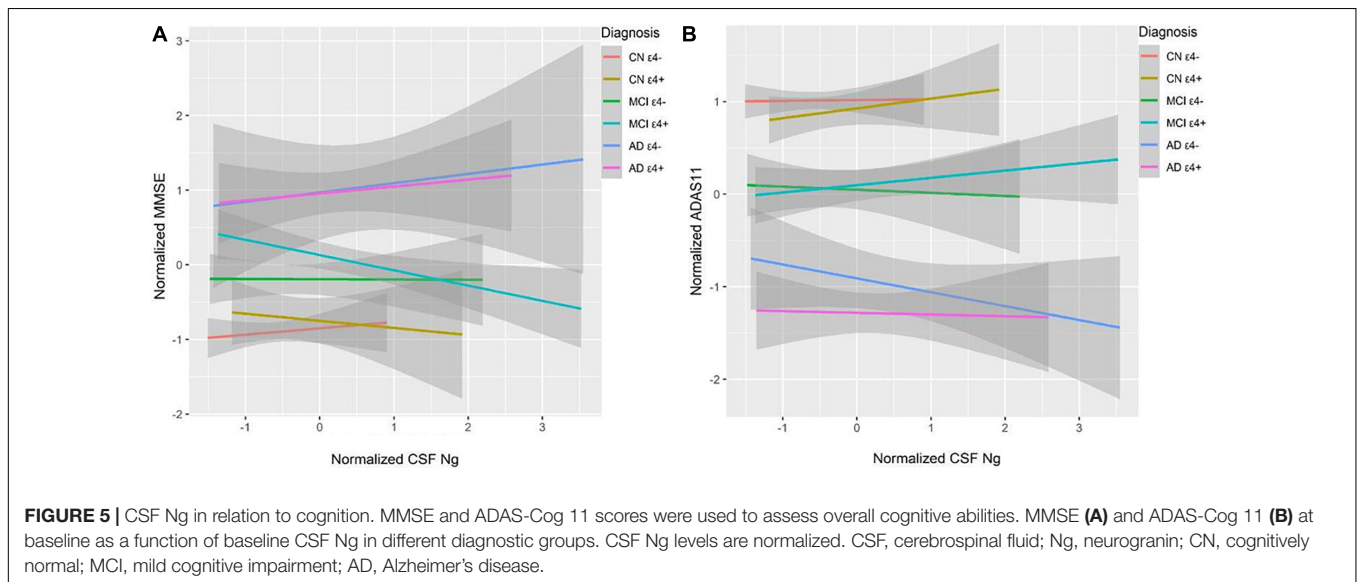
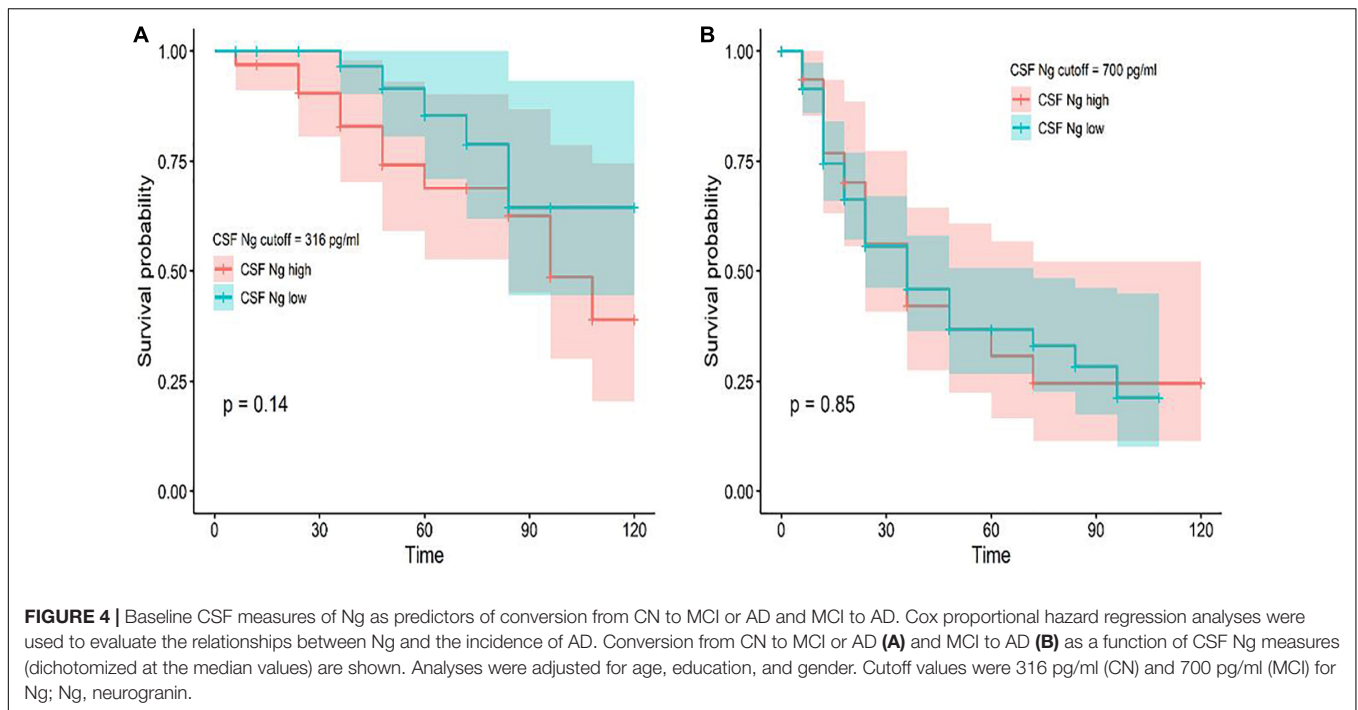
Previous studies have shown that, compared with healthy controls, CSF Ng was significantly elevated in MCI and AD, and MCI participants who progressed to dementia had higher concentrations of CSF Ng than stable MCI subjects (Kvartsberg et al., 2015a; Portelius et al., 2015). To assess whether CSF Ng levels can be used to identify MCI and AD subjects with potential APOE ε4 carriership, each group was divided into APOE ε4–positive and APOE ε4–negative in the present study. The concentrations of CSF Ng were significantly increased in the MCI ε4+, AD ε4–, and AD ε4+ groups compared to CN ε4– group. Interestingly, higher CSF Ng concentrations were observed in the MCI ε4+ group than MCI ε4– group, but there was no similar finding between CN ε4– and CN ε4+ and between AD



$\epsilon 4-$ and AD $\epsilon 4+$, suggesting that CSF Ng may be an early biomarker of AD-related synaptic degeneration (Portelius et al., 2015), and suggesting the roles of CSF Ng in the pathophysiology of MCI may be related to *APOE* $\epsilon 4$ status. However, CSF A β 42 concentrations were significantly different between $\epsilon 4-$ and $\epsilon 4+$ in every group. Therefore, it was necessary to further explore whether the roles of CSF Ng were being modulated in part by A β rather than *APOE* $\epsilon 4$ alone.

Previous studies demonstrated that CSF Ng is particularly elevated in individuals with MCI and AD with abnormal A β (Portelius et al., 2015; Wang, 2019). However, the relationship between CSF Ng and A β pathology remains controversial. Some studies have shown that CSF Ng positively or negatively correlated with A β 42 or A β 40 in AD patients (De Vos et al., 2015; Hellwig et al., 2015; Janelidze et al., 2016; Mattsson et al., 2016). Moreover, other researchers have reported that the CSF Ng levels did not correlate to A β 42 in AD samples (Hellwig et al., 2015; Sanfilippo et al., 2016). In the present study, except for CN $\epsilon 4-$ group, no relationship between CSF Ng and A β 42 was observed in other diagnostic groups. Most likely, it indicates that the synaptic degeneration is weakly associated with the

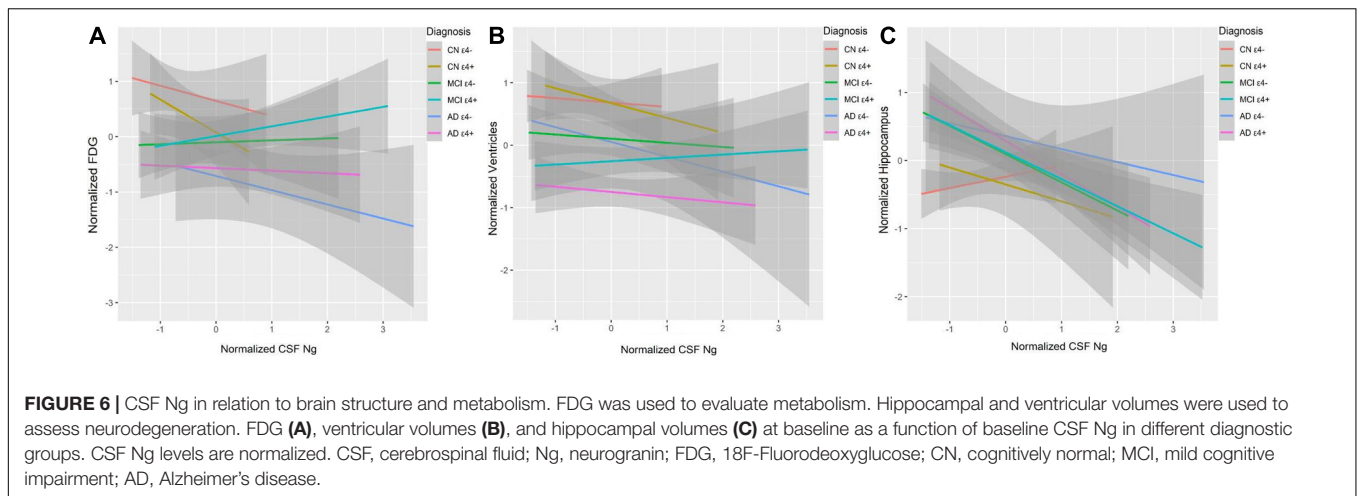
axonal damage induced by A β . In clinical trials, the failure of anti-amyloid therapy to reduce or reverse the decline of cognitive ability has aroused doubts about the A β cascade theory. Interestingly, some studies have demonstrated the role of A β in neuroprotection, synaptic function and memory consolidation (Lazarevic et al., 2017; Finnie and Nader, 2020). These beneficial effects are A β level and species specificity (Karisetty et al., 2020). Picomolar levels and monomers proved to be beneficial, while high levels and soluble oligomers proved to be harmful (Karisetty et al., 2020). These findings emphasize the need to understand the physiological and pathological roles of A β in order to improve current amyloid based therapeutic strategies (Karisetty et al., 2020). As AD is a multifactorial disease, targeting AD related processes such as tau pathology, synaptic activity, neural epigenetic regulation of AD associated genes, and inflammatory responses may provide alternative treatment strategies (Karisetty et al., 2020). In line with previous studies (De Vos et al., 2015; Hellwig et al., 2015; Portelius et al., 2015; Janelidze et al., 2016; Mattsson et al., 2016; Sanfilippo et al., 2016; Wang, 2019; Xue et al., 2020), we have found that elevated levels of CSF Ng were correlated with T-tau and P-tau in every diagnostic



group. Interestingly, T-tau and P-tau concentrations were notably increased in *APOE* ε4 carriers compared to *APOE* ε4 non-carriers in MCI, but there was no significant difference in the concentrations of T-tau and P-tau between *APOE* ε4 carriers and *APOE* ε4 non-carriers in CN and AD. These findings suggest that synaptic degeneration especially in MCI subjects may be related to the axonal damage induced by tau or *APOE* ε4. It is important to consider that relationships between CSF biomarkers (such as Ng, Aβ, T-tau, and P-tau) within MCI populations cannot exclude the possibility that different pathogenic processes are involved.

We next sought to test whether CSF Ng could improve the differential diagnosis of MCI and AD dementia in comparison

to the traditional AD biomarkers, such as CSF T-tau and P-tau. All biomarkers identified MCI ε4+ versus CN ε4-, AD ε4- versus CN ε4-, and AD ε4+ versus CN ε4-, but not MCI ε4- versus CN ε4-, and combinations did not result in improved diagnostic accuracy compared with using individual biomarkers. In terms of diagnostic accuracy, the different performance of CSF Ng on MCI ε4- and MCI ε4+ may be due to the fact that less MCI ε4- subjects would progress to AD dementia, while more MCI ε4+ subjects would progress to AD dementia. It is well known that tau protein is mainly distributed in the soma and axons of neurons (Mandelkow, 1999; Wang and Mandelkow, 2016; Mondragón-Rodríguez et al., 2020). However,



recent evidence suggested that tau is also a dendritic protein (Mondragón-Rodríguez et al., 2012a,b, 2020; Regan and Piers, 2015). Specifically, under physiological conditions, endogenous tau is located at the postsynaptic of neurons (Mondragón-Rodríguez et al., 2012b, 2020). This raises an important question: What is the role of tau protein in postsynapses (Mondragón-Rodríguez et al., 2020)? According to recent data, dendritic tau seems to regulate the plastic mechanisms related to memory storage (Mondragón-Rodríguez et al., 2012b, 2020; Regan and Piers, 2015; Ittner et al., 2016). At the physiological and molecular levels, lasting changes in synaptic plasticity are considered to be cell-related factors for memory storage. In the phenomenon of synaptic plasticity related to memory, synaptic strength can be long-term-potential (LTP) or long-term depression (LTD), and these changes can last for hours to days (Mulkey et al., 1993; Collingridge et al., 2010; Lüscher and Malenka, 2012; Connor and Wang, 2016). The cellular mechanism of LTD is triggered by the activation of synaptic N-methyl-D-aspartate receptors (Mulkey et al., 1993; Collingridge et al., 2010; Lüscher and Malenka, 2012; Connor and Wang, 2016; Mondragón-Rodríguez et al., 2020). Ng is a potential synaptic biomarker. Ng is a post-synaptic protein that is predominantly expressed in the cortex and hippocampus, where it is located in dendritic spines, as well as plays a critical role in regulating LTP and learning (Wellington et al., 2018). Therefore, the diagnostic accuracy was similar between CSF Ng and tau individually and combined together because they may capture different elements of the same neurodegenerative processes in AD. In addition, CSF Ng did not significantly predict conversion from CN to MCI or AD and from MCI to AD, indicating that CSF Ng may be not sensitive in predicting progression in cognitively normal subjects or MCI patients.

Neurogranin is a post synaptic protein involved in memory consolidation as well as a potential biomarker of cognitive decline and neurodegeneration in AD (Huang et al., 2004; Mavroudis et al., 2019). However, the correlation between CSF Ng and cognitive evaluation scores as measured by MMSE and ADAS-cog is inconsistent. De Vos et al. (2015) reported no correlations between CSF Ng and clinical parameters, including

MMSE scores (at baseline), nor the annual change in MMSE or disease duration in control, MCI, and AD groups. Hellwig et al. (2015) also reported that the MMSE scores did not associate with Ng concentrations in every group. Portelius et al. (2015) found that CSF Ng did not relate to baseline MMSE and ADAS-cog scores, but high CSF Ng concentrations in MCI individuals who later developed dementia related significantly to a more rapid elevation in ADAS-cog scores over time. Mattsson et al. (2016) demonstrated that Ng was correlated with worsening MMSE and ADAS-cog scores during follow-up in A β positive subjects. In the present study, we only collected baseline scores of MMSE and ADAS-cog 11 due to large amounts of missing data due to follow-up. We found that CSF Ng negatively associated with MMSE scores at baseline in the MCI ϵ 4+ group, whereas CSF Ng did not significantly relate to baseline scores of ADAS-cog 11 in any diagnostic group. Although the association between Ng and amyloidosis still needs further validation, there have been some reports indicating a significant effect of amyloidosis on Ng. Therefore, in order to avoid the influence of A β 42, A β 42 was taken as a covariate in the above analysis. This result again suggests that the pathophysiological effects of CSF Ng in MCI may be related to specific effects of APOE ϵ 4 rather than amyloidosis. Finally, we tested whether CSF Ng related to hippocampal and ventricular volumes as measured by magnetic resonance imaging (MRI) and to cortical glucose metabolism as measured with FDG-PET. CSF Ng did not relate to baseline FDG-PET or ventricular volumes in different diagnostic groups, but CSF Ng was associated with hippocampal volumes in the MCI ϵ 4-, MCI ϵ 4+, and AD ϵ 4+ groups. In this respect, the role of CSF Ng in MCI is not found to be related to APOE ϵ 4, possibly through amyloid-independent mechanisms.

The present study has several limitations. Firstly, this study did not investigate non-AD neurodegenerative diseases. Secondly, the ADNI database consists of highly educated individuals who are motivated to participate in research focused on AD. Finally, this study lacks follow-up data and correspondingly cannot examine longitudinal relationships between CSF Ng, APOE ϵ 4, neurodegeneration and cognition.

CONCLUSION

In conclusion, CSF Ng concentrations were significantly increased in *APOE* $\epsilon 4$ carriers compared to *APOE* $\epsilon 4$ non-carriers with MCI. In addition, CSF Ng identified MCI $\epsilon 4+$ versus CN $\epsilon 4-$, but not MCI $\epsilon 4-$ versus CN $\epsilon 4-$. Similarly, CSF Ng negatively related to MMSE scores at baseline in MCI $\epsilon 4+$ subjects but not in MCI $\epsilon 4-$ subjects. However, we did not observe the similar phenomena between CN $\epsilon 4-$ and CN $\epsilon 4+$, or between AD $\epsilon 4-$ and AD $\epsilon 4+$. We propose that the roles of CSF Ng in the pathophysiology of MCI may be related to *APOE* $\epsilon 4$. Future studies will further explore the relationship between *APOE* $\epsilon 4$ and CSF Ng and related mechanisms, providing more evidence for the potential roles of Ng in clinical research, trials and practice of AD and other neurodegenerative diseases.

MEMBERS OF THE ALZHEIMER'S DISEASE NEUROIMAGING INITIATIVE

Data collection and sharing for this project was funded by the Alzheimer's Disease Neuroimaging Initiative (ADNI) (National Institutes of Health Grant U01 AG024904) and DOD ADNI (Department of Defense award number W81XWH-12-2-0012). ADNI is funded by the National Institute on Aging, National Institute of Biomedical Imaging and Bioengineering, and through generous contributions from the following: AbbVie, Alzheimer's Association, Alzheimer's Drug Discovery Foundation, Araclon Biotech, BioClinica, Inc., Biogen, Bristol-Myers Squibb Company, CereSpir, Inc., Cogstate, Eisai Inc., Elan Pharmaceuticals, Inc., Eli Lilly and Company, EuroImmun, F. Hoffmann-La Roche Ltd., and its affiliated company Genentech, Inc., Fujirebio, GE Healthcare, IXICO Ltd., Janssen Alzheimer Immunotherapy Research and Development, LLC., Johnson & Johnson Pharmaceutical Research and Development, LLC., Lumosity, Lundbeck, Merck & Co., Inc., Meso Scale Diagnostics, LLC., NeuroRx Research, Neurotrack Technologies, Novartis Pharmaceuticals Corporation, Pfizer Inc., Piramal Imaging, Servier, Takeda Pharmaceutical Company, and Transition Therapeutics. The Canadian Institutes of Health Research is providing funds to support ADNI clinical sites in Canada. Private sector contributions are facilitated by the Foundation for

REFERENCES

- Aisen, P. S., Petersen, R. C., Donohue, M. C., Gamst, A., Raman, R., Thomas, R. G., et al. (2010). Clinical core of the Alzheimer's disease neuroimaging initiative: progress and plans. *Alzheimer's Dement. J. Alzheimer's Assoc.* 6, 239–246.
- Baudier, J., Deloulme, J. C., Van Dorsselaer, A., Black, D., and Matthes, H. W. (1991). Purification and characterization of a brain-specific protein kinase C substrate, neurogranin (p17). Identification of a consensus amino acid sequence between neurogranin and neuromodulin (GAP43) that corresponds to the protein kinase C phosphorylation site and the calmodulin-binding domain. *J. Biol. Chem.* 266, 229–237. doi: 10.1016/s0021-9258(18)52425-x
- Berg, L. (1988). Clinical dementia rating (CDR). *Psychopharmacol. Bull.* 24, 637–639.
- Bertram, L., Lill, C. M., and Tanzi, R. E. (2010). The genetics of Alzheimer disease: back to the future. *Neuron* 68, 270–281. doi: 10.1016/j.neuron.2010.10.013

the National Institutes of Health (www.fnih.org). The grantee organization is the Northern California Institute for Research and Education, and the study is coordinated by the Alzheimer's Therapeutic Research Institute at the University of Southern California. ADNI data are disseminated by the Laboratory for Neuroimaging at the University of Southern California.

DATA AVAILABILITY STATEMENT

The datasets presented in this study can be found in online repositories. The names of the repository/repositories and accession number(s) can be found below: Data used in preparation of this article were obtained from the ADNI database, <http://www.adni-info.org>.

ETHICS STATEMENT

Written informed consent was obtained from the individual(s) for the publication of any potentially identifiable images or data included in this article.

AUTHOR CONTRIBUTIONS

YF: study concept, design, analysis, and interpretation of data, composition of figures, and manuscript drafting. YG: study design, composition of figures, manuscript drafting, and critical review of manuscript for intellectual content. JT: collection of data and manuscript draft. JL and MB: analysis and interpretation of data. HZ: study concept, design, study supervision, and critical review of manuscript for intellectual content. All authors read and approved the final manuscript.

FUNDING

This study was supported by the Medical Research Project of Chongqing Healthy Committee (2018MSXM058) and Nursing Research Fund of The First Affiliated Hospital of Chongqing Medical University (HLJJ2014-24).

- Collingridge, G. L., Peineau, S., Howland, J. G., and Wang, Y. T. (2010). Long-term depression in the CNS. *Nat. Rev. Neurosci.* 11, 459–473.
- Connor, S. A., and Wang, Y. T. (2016). A place at the table: LTD as a mediator of memory genesis. *Neuroscientist Rev. J. Bringing Neurobiol. Neurol. Psychiatry* 22, 359–371. doi: 10.1177/1073858415588498
- Davidsson, P., and Blennow, K. (1998). Neurochemical dissection of synaptic pathology in Alzheimer's disease. *Int. Psychogeriatr.* 10, 11–23. doi: 10.1017/s1041610298005110
- De Vos, A., Jacobs, D., Struyfs, H., Franssen, E., Andersson, K., Portelius, E., et al. (2015). C-terminal neurogranin is increased in cerebrospinal fluid but unchanged in plasma in Alzheimer's disease. *Alzheimer's Dement. J. Alzheimer's Assoc.* 11, 1461–1469. doi: 10.1016/j.jalz.2015.05.012
- DeKosky, S. T., and Scheff, S. W. (1990). Synapse loss in frontal cortex biopsies in Alzheimer's disease: correlation with cognitive severity. *Ann. Neurol.* 27, 457–464. doi: 10.1002/ana.410270502

- Díez-Guerra, F. J. (2010). Neurogranin, a link between calcium/calmodulin and protein kinase C signaling in synaptic plasticity. *IUBMB Life* 62, 597–606. doi: 10.1002/iub.357
- Finnie, P. S. B., and Nader, K. (2020). Amyloid beta secreted during consolidation prevents memory malleability. *Curr. Biol.* 30, 1934–1940.e4.
- Folstein, M. F., Folstein, S. E., and McHugh, P. R. (1975). Mini-mental state. A practical method for grading the cognitive state of patients for the clinician. *J. Psychiatr. Res.* 12, 189–198.
- Gerendasy, D. D., and Sutcliffe, J. G. (1997). RC3/neurogranin, a postsynaptic calpain for setting the response threshold to calcium influxes. *Mol. Neurobiol.* 15, 131–163. doi: 10.1007/bf02740632
- Hellwig, K., Kvartsberg, H., Portelius, E., Andreasson, U., Oberstein, T. J., Lewczuk, P., et al. (2015). Neurogranin and YKL-40: independent markers of synaptic degeneration and neuroinflammation in Alzheimer's disease. *Alzheimer's Res. Ther.* 7:74.
- Huang, K. P., Huang, F. L., Jäger, T., Li, J., Reymann, K. G., and Balschun, D. (2004). Neurogranin/RC3 enhances long-term potentiation and learning by promoting calcium-mediated signaling. *J. Neurosci. Official J. Soc. Neurosci.* 24, 10660–10669. doi: 10.1523/jneurosci.2213-04.2004
- Ittner, A., Chua, S. W., Bertz, J., Volkerling, A., van der Hoven, J., Gladbach, A., et al. (2016). Site-specific phosphorylation of tau inhibits amyloid- β toxicity in Alzheimer's mice. *Science* 354, 904–908. doi: 10.1126/science.aah6205
- Jack, C. R. Jr., Bennett, D. A., Blennow, K., Carrillo, M. C., Dunn, B., Haeberlein, S. B., et al. (2018). NIA-AA research framework: toward a biological definition of Alzheimer's disease. *Alzheimer's Dement. J. Alzheimer's Assoc.* 14, 535–562. doi: 10.1016/j.jalz.2018.02.018
- Janelidze, S., Hertzze, J., Zetterberg, H., Landqvist Waldo, M., Santillo, A., Blennow, K., et al. (2016). Cerebrospinal fluid neurogranin and YKL-40 as biomarkers of Alzheimer's disease. *Ann. Clin. Transl. Neurol.* 3, 12–20. doi: 10.1002/acn3.266
- Karisetty, B. C., Bhatnagar, A., Armour, E. M., Beaver, M., Zhang, H., and Elefant, F. (2020). Amyloid- β peptide impact on synaptic function and neuroepigenetic gene control reveal new therapeutic strategies for Alzheimer's disease. *Front. Mol. Neurosci.* 13:577622.
- Kvartsberg, H., Duits, F. H., Ingelsson, M., Andreassen, N., Öhrfelt, A., Andersson, K., et al. (2015a). Cerebrospinal fluid levels of the synaptic protein neurogranin correlates with cognitive decline in prodromal Alzheimer's disease. *Alzheimer's Dement. J. Alzheimer's Assoc.* 11, 1180–1190. doi: 10.1016/j.jalz.2014.10.009
- Kvartsberg, H., Lashley, T., Murray, C. E., Brinkmalm, G., Cullen, N. C., Höglund, K., et al. (2019). The intact postsynaptic protein neurogranin is reduced in brain tissue from patients with familial and sporadic Alzheimer's disease. *Acta Neuropathol.* 137, 89–102. doi: 10.1007/s00401-018-1910-3
- Kvartsberg, H., Portelius, E., Andreasson, U., Brinkmalm, G., Hellwig, K., Lelental, N., et al. (2015b). Characterization of the postsynaptic protein neurogranin in paired cerebrospinal fluid and plasma samples from Alzheimer's disease patients and healthy controls. *Alzheimer's Res. Ther.* 7:40.
- Lambert, J. C., Ibrahim-Verbaas, C. A., Harold, D., Naj, A. C., Sims, R., Bellenguez, C., et al. (2013). Meta-analysis of 74,046 individuals identifies 11 new susceptibility loci for Alzheimer's disease. *Nat. Genet.* 45, 1452–1458.
- Landau, S. M., Mintun, M. A., Joshi, A. D., Koeppe, R. A., Petersen, R. C., Aisen, P. S., et al. (2012). Amyloid deposition, hypometabolism, and longitudinal cognitive decline. *Ann. Neurol.* 72, 578–586. doi: 10.1002/ana.23650
- Lazarevic, V., Fieňko, S., Andres-Alonso, M., Anni, D., Ivanova, D., Montenegro-Venegas, C., et al. (2017). Physiological concentrations of amyloid beta regulate recycling of synaptic vesicles via $\alpha 7$ acetylcholine receptor and CDK5/calcineurin signaling. *Front. Mol. Neurosci.* 10:221. doi: 10.3389/fnmol.2017.00221
- Lüscher, C., and Malenka, R. C. (2012). NMDA receptor-dependent long-term potentiation and long-term depression (LTP/LTD). *Cold Spring Harb. Perspect. Biol.* 4:a005710. doi: 10.1101/cshperspect.a005710
- Mandelkow, E. (1999). Alzheimer's disease. The tangled tale of tau. *Nature* 402, 588–589. doi: 10.1038/45095
- Mattsson, N., Insel, P. S., Palmqvist, S., Portelius, E., Zetterberg, H., Weiner, M., et al. (2016). Cerebrospinal fluid tau, neurogranin, and neurofilament light in Alzheimer's disease. *EMBO Mol. Med.* 8, 1184–1196. doi: 10.15252/emmm.201606540
- Mavroudis, I. A., Petridis, F., Chatzikonstantinou, S., and Kazis, D. (2019). A meta-analysis on CSF neurogranin levels for the diagnosis of Alzheimer's disease and mild cognitive impairment. *Aging Clin. Exp. Res.* 32, 1639–1646. doi: 10.1007/s40520-019-01326-z
- Mondragón-Rodríguez, S., Perry, G., Zhu, X., and Boehm, J. (2012a). Amyloid beta and tau proteins as therapeutic targets for Alzheimer's disease treatment: rethinking the current strategy. *Int. J. Alzheimer's Dis.* 2012:630182.
- Mondragón-Rodríguez, S., Salgado-Burgos, H., and Peña-Ortega, F. (2020). Circuitry and synaptic dysfunction in Alzheimer's disease: a new tau hypothesis. *Neural Plast.* 2020:2960343.
- Mondragón-Rodríguez, S., Trillaud-Doppia, E., Dudilot, A., Bourgeois, C., Lauzon, M., Leclerc, N., et al. (2012b). Interaction of endogenous tau protein with synaptic proteins is regulated by N-methyl-D-aspartate receptor-dependent tau phosphorylation. *J. Biol. Chem.* 287, 32040–32053. doi: 10.1074/jbc.M112.401240
- Mulkey, R. M., Herron, C. E., and Malenka, R. C. (1993). An essential role for protein phosphatases in hippocampal long-term depression. *Science* 261, 1051–1055. doi: 10.1126/science.8394601
- Pak, J. H., Huang, F. L., Li, J., Balschun, D., Reymann, K. G., Chiang, C., et al. (2000). Involvement of neurogranin in the modulation of calcium/calmodulin-dependent protein kinase II, synaptic plasticity, and spatial learning: a study with knockout mice. *Proc. Natl. Acad. Sci. U.S.A.* 97, 11232–11237. doi: 10.1073/pnas.210184697
- Portelius, E., Zetterberg, H., Skillback, T., Tornqvist, U., Andreasson, U., Trojanowski, J. Q., et al. (2015). Cerebrospinal fluid neurogranin: relation to cognition and neurodegeneration in Alzheimer's disease. *Brain J. Neurol.* 138, 3373–3385. doi: 10.1093/brain/awv267
- Reddy, P. H., Mani, G., Park, B. S., Jacques, J., Murdoch, G., Whetsell, W. Jr., et al. (2005). Differential loss of synaptic proteins in Alzheimer's disease: implications for synaptic dysfunction. *J. Alzheimer's Dis.* 7, 103–117; discussion 173–180.
- Regan, P., and Piers, T. (2015). Tau phosphorylation at serine 396 residue is required for hippocampal LTD. *J. Neurosci.* 35, 4804–4812. doi: 10.1523/jneurosci.2842-14.2015
- Risacher, S. L., and Saykin, A. J. (2013). Neuroimaging and other biomarkers for Alzheimer's disease: the changing landscape of early detection. *Annu. Rev. Clin. Psychol.* 9, 621–648. doi: 10.1146/annurev-clinpsy-050212-185535
- Sanfilippo, C., Forlenza, O., Zetterberg, H., and Blennow, K. (2016). Increased neurogranin concentrations in cerebrospinal fluid of Alzheimer's disease and in mild cognitive impairment due to AD. *J. Neural Transm.* 123, 1443–1447. doi: 10.1007/s00702-016-1597-3
- Scheff, S. W., Price, D. A., Schmitt, F. A., and Mufson, E. J. (2006). Hippocampal synaptic loss in early Alzheimer's disease and mild cognitive impairment. *Neurobiol. Aging* 27, 1372–1384. doi: 10.1016/j.neurobiolaging.2005.09.012
- Scheff, S. W., Price, D. A., Schmitt, F. A., DeKosky, S. T., and Mufson, E. J. (2007). Synaptic alterations in CA1 in mild Alzheimer disease and mild cognitive impairment. *Neurology* 68, 1501–1508. doi: 10.1212/01.wnl.0000260698.46517.8f
- Shaw, L. M., Vanderstichele, H., Knapik-Czajka, M., Clark, C. M., Aisen, P. S., Petersen, R. C., et al. (2009). Cerebrospinal fluid biomarker signature in Alzheimer's disease neuroimaging initiative subjects. *Ann. Neurol.* 65, 403–413. doi: 10.1002/ana.21610
- Tarawneh, R., D'Angelo, G., Crimmins, D., Herries, E., Griest, T., Fagan, A. M., et al. (2016). Diagnostic and prognostic utility of the synaptic marker neurogranin in Alzheimer disease. *JAMA Neurol.* 73, 561–571. doi: 10.1001/jamaneurol.2016.0086
- Tierney, M. C., Fisher, R. H., Lewis, A. J., Zoritto, M. L., Snow, W. G., Reid, D. W., et al. (1988). The NINCDS-ADRDA work group criteria for the clinical diagnosis of probable Alzheimer's disease: a clinicopathologic study of 57 cases. *Neurology* 38, 359–364. doi: 10.1212/wnl.38.3.359
- Wang, L. (2019). Association of cerebrospinal fluid Neurogranin with Alzheimer's disease. *Aging Clin. Exp. Res.* 31, 185–191. doi: 10.1007/s40520-018-0948-3
- Wang, Y., and Mandelkow, E. (2016). Tau in physiology and pathology. *Nat. Rev. Neurosci.* 17, 5–21.
- Wellington, H., Paterson, R. W., Suárez-González, A., Poole, T., Frost, C., Sjöbom, U., et al. (2018). CSF neurogranin or tau distinguish typical and atypical Alzheimer disease. *Ann. Clin. Transl. Neurol.* 5, 162–171. doi: 10.1002/acn3.518

- Xia, Z., and Storm, D. R. (2005). The role of calmodulin as a signal integrator for synaptic plasticity. *Nat. Rev. Neurosci.* 6, 267–276. doi: 10.1038/nrn1647
- Xue, M., Sun, F. R., Ou, Y. N., Shen, X. N., Li, H. Q., Huang, Y. Y., et al. (2020). Association of cerebrospinal fluid neurogranin levels with cognition and neurodegeneration in Alzheimer's disease. *Aging* 12, 9365–9379. doi: 10.18632/aging.103211
- Zhang, H., Therriault, J., Kang, M. S., Ng, K. P., Pascoal, T. A., Rosa-Neto, P., et al. (2018). Cerebrospinal fluid synaptosomal-associated protein 25 is a key player in synaptic degeneration in mild cognitive impairment and Alzheimer's disease. *Alzheimer's Res. Ther.* 10:80.

Conflict of Interest: The authors declare that the research was conducted in the absence of any commercial or financial relationships that could be construed as a potential conflict of interest.

Copyright © 2021 Fan, Gao, Therriault, Luo, Ba and Zhang. This is an open-access article distributed under the terms of the Creative Commons Attribution License (CC BY). The use, distribution or reproduction in other forums is permitted, provided the original author(s) and the copyright owner(s) are credited and that the original publication in this journal is cited, in accordance with accepted academic practice. No use, distribution or reproduction is permitted which does not comply with these terms.