



# Comparative Genomics of the *Listeria monocytogenes* ST204 Subgroup

Edward M. Fox<sup>1\*</sup>, Theodore Allnutt<sup>1</sup>, Mark I. Bradbury<sup>2</sup>, Séamus Fanning<sup>3</sup> and P. Scott Chandry<sup>1</sup>

<sup>1</sup> CSIRO Food and Nutrition, Werribee, VIC, Australia, <sup>2</sup> CSIRO Food and Nutrition, North Ryde, NSW, Australia, <sup>3</sup> UCD-Centre for Food Safety, School of Public Health, Physiotherapy and Sports Science, University College Dublin, Dublin, Ireland

## OPEN ACCESS

### Edited by:

Avelino Alvarez-Ordóñez,  
Teagasc Food Research Centre,  
Ireland

### Reviewed by:

Kallopi Rantsiou,  
University of Turin, Italy  
David Rodriguez-Lazaro,  
University of Burgos, Spain

### \*Correspondence:

Edward M. Fox  
edward.fox@csiro.au

### Specialty section:

This article was submitted to  
Food Microbiology,  
a section of the journal  
Frontiers in Microbiology

**Received:** 14 June 2016

**Accepted:** 07 December 2016

**Published:** 22 December 2016

### Citation:

Fox EM, Allnutt T, Bradbury MI,  
Fanning S and Chandry PS (2016)  
Comparative Genomics of the *Listeria*  
*monocytogenes* ST204 Subgroup.  
*Front. Microbiol.* 7:2057.  
doi: 10.3389/fmicb.2016.02057

The ST204 subgroup of *Listeria monocytogenes* is among the most frequently isolated in Australia from a range of environmental niches. In this study we provide a comparative genomics analysis of food and food environment isolates from geographically diverse sources. Analysis of the ST204 genomes showed a highly conserved core genome with the majority of variation seen in mobile genetic elements such as plasmids, transposons and phage insertions. Most strains (13/15) harbored plasmids, which although varying in size contained highly conserved sequences. Interestingly 4 isolates contained a conserved plasmid of 91,396 bp. The strains examined were isolated over a period of 12 years and from different geographic locations suggesting plasmids are an important component of the genetic repertoire of this subgroup and may provide a range of stress tolerance mechanisms. In addition to this 4 phage insertion sites and 2 transposons were identified among isolates, including a novel transposon. These genetic elements were highly conserved across isolates that harbored them, and also contained a range of genetic markers linked to stress tolerance and virulence. The maintenance of conserved mobile genetic elements in the ST204 population suggests these elements may contribute to the diverse range of niches colonized by ST204 isolates. Environmental stress selection may contribute to maintaining these genetic features, which in turn may be co-selecting for virulence markers relevant to clinical infection with ST204 isolates.

**Keywords:** *Listeria monocytogenes*, comparative genomics, MLST, whole genome sequencing, ST204, plasmid

## INTRODUCTION

*Listeria monocytogenes* is a foodborne bacterial pathogen which causes listeriosis in humans (Allerberger and Wagner, 2010). This illness can manifest as a milder gastroenteritis form or a severe invasive infection which may include disease outcomes such as meningoencephalitis, sepsis, and stillbirth (Allerberger and Wagner, 2010). The bacterium has been isolated from a range of sources including the environment and foods, suggesting members of the species are capable of adaptation to diverse ecological niches (Gray et al., 2004; Fox et al., 2009; Freitag et al., 2009; Sauders et al., 2012).

With the increasing application of more sophisticated genomic analyses, a greater insight into *L. monocytogenes* population structure has been elucidated (Fox et al., 2012; Haase et al., 2014). The application of Multi Locus Sequence Typing (MLST) has provided insights into the evolution

of the species and identified associations of subgroups to certain environmental niches or clinical illness (Unterholzner et al., 2013; Haase et al., 2014; Maury et al., 2016). Dominant sequence types (STs) and clonal complexes (CCs; groups of closely related STs) have been identified both in a geographical context and as well as with source associations (e.g., clinical or food sources; Chenal-Francisque et al., 2011; Haase et al., 2014; Ebner et al., 2015; Maury et al., 2016). These studies have, for example, identified CC1/ST1 as a dominant subgroup at both a national or global level with strong clinical significance. Similar analysis of *L. monocytogenes* isolates from France identified CC121 as the most common ST, which was predominantly associated with food (Maury et al., 2016). Although analysis of *L. monocytogenes* isolates from Australia has identified dominant subgroups also over-represented in other geographical regions, one notable exception is the ST204 subgroup (Kwong et al., 2016). This subgroup is among the most common ST identified in Australia, is associated with a diverse range of food production environments and products and also with human clinical infection. In contrast to this, it has been reported at lower frequency relative to other ST subgroups in studies outside Australia and with the exception of data from France, usually only in association with food sources (Haase et al., 2014; Ebner et al., 2015).

Whole genome sequencing has facilitated new insights into the genomics of *L. monocytogenes* and has allowed greater understanding of traits shared across the species along with those characteristic of subgroups of *L. monocytogenes* (den Bakker et al., 2010; Schmitz-Esser et al., 2015; Maury et al., 2016). Studies such as these have facilitated a greater understanding of aspects such as strain virulence and stress resistance mechanisms (Nightingale et al., 2005; Muller et al., 2013). It is now becoming apparent, for example, that certain subgroups of *L. monocytogenes* may be less pathogenic than others, or may contain mechanisms that promote other phenotypes such as persistence in localized environments (Cotter et al., 2008; Van Stelten et al., 2010; Verghese et al., 2011). Genetic variation between closely related isolates can yield information on traits characteristic of such subgroups; analysis of the ST121 subgroup, for example, identified conserved genetic features including a transposon mediating resistance to quaternary ammonium compound-based sanitizers, as well as highly conserved phage and plasmids (Schmitz-Esser et al., 2015).

This study provides a genomic analysis of the *L. monocytogenes* ST204 subgroup, a prevalent subgroup which has colonized a range of environmental niches in Australia and is linked with sporadic illness in humans. A panel of 15 isolates were chosen to represent diverse sources (foods including milk, cheese, and pork, as well as food production environments), different geographical locations (including the Australian States of New South Wales, South Australia, Tasmania, Victoria and Western Australia, as well as an isolate from Ireland) and different isolation dates (ranging from 2000 to 2015). This study includes characterization of mobile genetic elements harbored by ST204 isolates from Australia and abroad, including phage, transposons and plasmids.

## MATERIALS AND METHODS

### Isolates Included in This Study

**Table 1** lists the 15 isolates included in this study. To understand the high prevalence of this subgroup noted in food and food environment niches, isolates were selected from a range of food or food processing facility environments (including dairy and meat foods, as well as food production environments). Fourteen isolates originated in Australia and one was isolated from a meat production facility in Ireland. Australian isolates were sourced from five different States: New South Wales ( $n = 5$ ), South Australia ( $n = 1$ ), Tasmania ( $n = 1$ ), Victoria ( $n = 6$ ), and Western Australia ( $n = 1$ ). The years of isolation ranged from 2000 to 2015.

### Whole Genome Sequencing, Assemblies and Annotations

Genomic DNA was extracted from isolates using the DNeasy Blood and Tissue kit (QIAGEN, Hilden, Germany) according to the manufacturer's instructions. DNA quantity was measured using the Qubit dsDNA HS assay kit (Thermo Scientific, Waltham, MA), and an A260/A280 of 1.8–2.0 was confirmed using a NanoDrop spectrophotometer (Thermo Scientific, Waltham, MA). DNA preparations were sent to the Ramaciotti Centre for Genomics (University of New South Wales, Sydney, Australia) for sequence ready genomic library preparation using the Nextera XT library prep kit (illumina, San Diego, CA). Subsequently 300 bp paired-end sequencing was performed using the illumina MiSeq platform. Raw reads were pre-processed to remove adapter sequences and low quality reads using the Trimmomatic version 0.22 software (Bolger et al., 2014). De novo assembly was performed using the SPAdes (Species Prediction and Diversity Estimation) genome assembler tool version 2.5.1 based on an algorithm which employs multisized De Bruijn graphs with K-mer values of “21, 33, 55, and 77” to construct the contiguous sequences (contigs) (Bankevich et al., 2012). FASTA files generated were processed through the online gene annotator RAST (Rapid Annotation of microbial genomes using Subsystems Technology) to produce GENBANK files (Aziz et al., 2008). Genome analysis including mobile element alignments was performed using Geneious software (Kearse et al., 2012). This Whole Genome Shotgun project has been deposited at DDBJ/ENA/GenBank under the accessions: LXQP00000000 (strain 2882); LXQQ00000000 (strain 2919); LXQR00000000 (strain 2937); LXQS00000000 (strain 2939); LXQT00000000 (strain 2945); LXQU00000000 (strain 2964); LXQV00000000 (strain 2973); LXQW00000000 (strain 2977); LXQX00000000 (strain 2978); LXQY00000000 (strain 2981); LXQZ00000000 (strain 3002); LXRA00000000 (strain Lm15-001); LXR00000000 (strain Lm15-011); LXRC00000000 (strain Lm15-027); LXRD00000000 (strain UC175). The versions described in this paper are versions LXQP01000000, LXQQ01000000, LXQR01000000, LXQS01000000, LXQT01000000, LXQU01000000, LXQV01000000, LXQW01000000, LXQX01000000, LXQY01000000, LXQZ01000000, LXRA01000000, LXR01000000, LXRC01000000, LXRD01000000, respectively.

TABLE 1 | Summary of the isolates in this study and overview their associated genetic features.

| Isolate  | Isolation         |           |                    | Genome |           |                |               | Transposons     |                      |        | Phage inserts |       |          |           |         |
|----------|-------------------|-----------|--------------------|--------|-----------|----------------|---------------|-----------------|----------------------|--------|---------------|-------|----------|-----------|---------|
|          | Source            | Country   | State <sup>a</sup> | Year   | Size (bp) | GC Content (%) | Number of CDS | CDS % of genome | Plasmid <sup>b</sup> | Tny/br | TnILP         | φcomK | φMonocin | φtRNA-Arg | φRNA-MT |
| 2882     | Meat-Pork         | Australia | VIC                | 2000   | 3,037,029 | 37.8           | 3001          | 90.2            | 91,396 bp            | -      | +             | +     | +        | -         | -       |
| 2919     | Meat-Environment  | Australia | VIC                | 2007   | 3,113,342 | 37.7           | 3096          | 90.3            | +                    | +      | +             | +     | -        | -         | -       |
| 2937     | Dairy-Cheese      | Australia | NSW                | 2009   | 2,949,465 | 37.8           | 2886          | 90.4            | 47,340 bp            | -      | +             | -     | +        | -         | -       |
| 2939     | Dairy-Cheese      | Australia | NSW                | 2009   | 2,948,045 | 37.8           | 2910          | 90.4            | +                    | -      | +             | -     | +        | -         | -       |
| 2945     | Dairy-Cheese      | Australia | TAS                | 2010   | 3,084,502 | 37.9           | 3063          | 90              | 91,396 bp            | +      | +             | +     | +        | -         | -       |
| 2964     | Dairy-Cheese      | Australia | VIC                | 2011   | 3,044,927 | 37.8           | 3010          | 90.2            | +                    | +      | +             | +     | +        | -         | -       |
| 2973     | Dairy-Cheese      | Australia | VIC                | 2012   | 3,049,747 | 38.0           | 3064          | 89.6            | 38,115 bp            | -      | -             | +     | +        | +         | +       |
| 2977     | Dairy-Cheese      | Australia | VIC                | 2012   | 2,990,589 | 37.8           | 2920          | 89.9            | +                    | +      | +             | +     | +        | -         | -       |
| 2978     | Dairy-Cheese      | Australia | VIC                | 2012   | 3,029,511 | 37.8           | 2987          | 90              | +                    | +      | +             | +     | +        | -         | -       |
| 2981     | Dairy-Milk        | Australia | SA                 | 2012   | 3,081,990 | 37.8           | 3060          | 90              | 91,396 bp            | +      | +             | +     | +        | +         | -       |
| 3002     | Dairy-Environment | Australia | WA                 | 2006   | 2,983,094 | 37.8           | 2931          | 90.2            | -                    | +      | +             | +     | +        | -         | -       |
| Lm15-001 | Meat-Environment  | Australia | NSW                | 2015   | 2,972,510 | 37.9           | 2979          | 90.6            | 38,191 bp            | -      | -             | +     | +        | +         | -       |
| Lm15-011 | Meat              | Australia | NSW                | 2015   | 3,013,664 | 37.8           | 2936          | 89.8            | +                    | +      | +             | +     | +        | -         | -       |
| Lm15-027 | Meat              | Australia | NSW                | 2015   | 2,953,353 | 38.0           | 2939          | 90.5            | -                    | -      | -             | -     | +        | +         | +       |
| UCDL175  | Meat-Environment  | Ireland   | n/a                | 2012   | 3,020,537 | 37.8           | 2966          | 90.5            | 91,396 bp            | +      | +             | +     | +        | -         | -       |

<sup>a</sup>VIC, Victoria; NSW, New South Wales; TAS, Tasmania; SA, South Australia; WA, Western Australia; n/a, not applicable. <sup>b</sup>Plasmids whose genome has not been closed are represented with a "+" symbol.

## Comparative Genomic Analysis

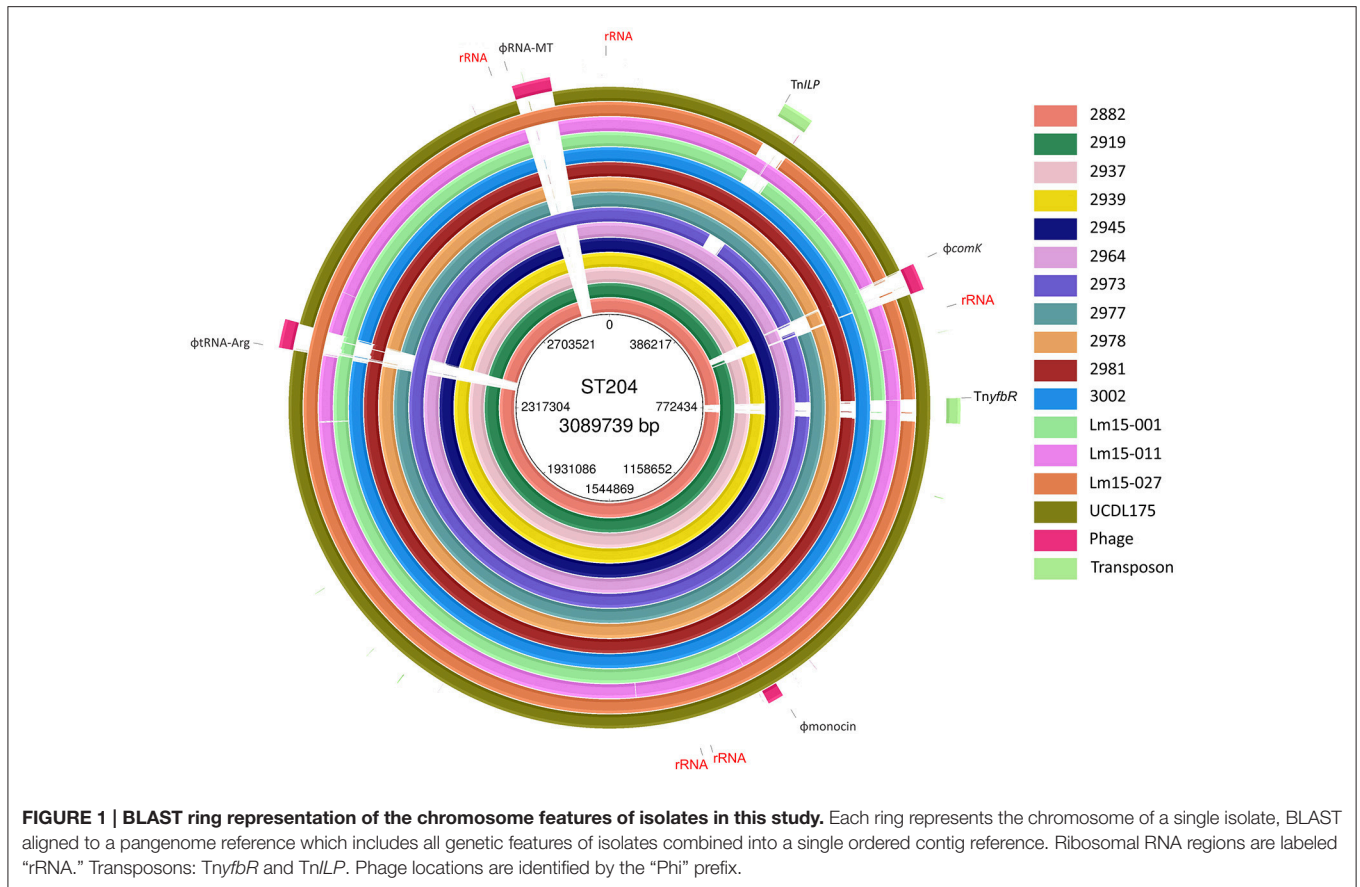
To visualize comparative BLAST alignments, chromosomes were compared using an in-house BLAST ring alignment python script, circles1.2.py (<https://github.com/tallnuttsiro/circles>); plasmids were compared using BRIG software (Alikhan et al., 2011); transposon and phage alignments were visualized using Easyfig software (Sullivan et al., 2011). SNP analysis was performed using the Parsnp program, part of the Harvest suite (Treangen et al., 2014). To construct an ordered chromosome pangenome, an optical map was generated for isolate UC DL175 using the Argus<sup>TM</sup> optical mapping system and MapSolver software (OpGen, Gaithersburg, MD). Assembled contigs were ordered by mapping to an *Nco*I genome restriction map. To construct a plasmid pangenome, unique features across all plasmids were combined into a single contig, ordered based on the largest closed plasmid pUCDL175.

## RESULTS AND DISCUSSION

*Listeria monocytogenes* can occupy a diverse set of environmental niches in addition to sporadic carriage in animal and human hosts where it may also cause associated infection (Vazquez-Boland et al., 2001; Grif et al., 2003; Ho et al., 2007; Sauders et al., 2012). Geographical or niche-specific variations have been identified in relation to associations with certain subgroups, for example ST9 and ST121 are highly represented among food isolates in many jurisdictions (Chenal-Francois et al., 2011; Ebner et al., 2015). An interesting observation in the distribution of *L. monocytogenes* STs among isolates from Australia is the high relative proportion of ST204 isolates, which have not been identified at this high relative abundance in other geographical populations (Chenal-Francois et al., 2011; Haase et al., 2014; Kwong et al., 2016). In addition, a diverse range of clinical and non-clinical sources are associated with these ST204 isolates, including various foods and the environment. This study interrogated draft genome sequences of representative isolates from this dominant subgroup of *L. monocytogenes* identified in Australia to understand their associated genetic characteristics and identify the presence of genetic markers related to clinical illness and/or environmental stress.

## Overview of the ST204 Pangenome

A summary of the genomes of the 15 ST204 isolates included in this study is shown in Table 1. Genome sizes ranged from 2.95 to 3.11 Mbp, with a GC content ranging from 37.7% up to 38%. The number of gene CDSs (coding DNA sequence) ranged from 2886 in the smallest genome to 3096 in the largest genome. A core genetic backbone was shared by all ST204 isolates in this study; where greatest variation was observed in the presence or absence of mobile genetic elements such as plasmids, transposons or phage insertions (Figures 1, 2). Plasmids were present in 13 of the 15 isolates. There were four phage insert regions identified among isolates, and two transposon insertions (Figure 1).



## Classical *L. monocytogenes* Virulence and Stress Tolerance Markers

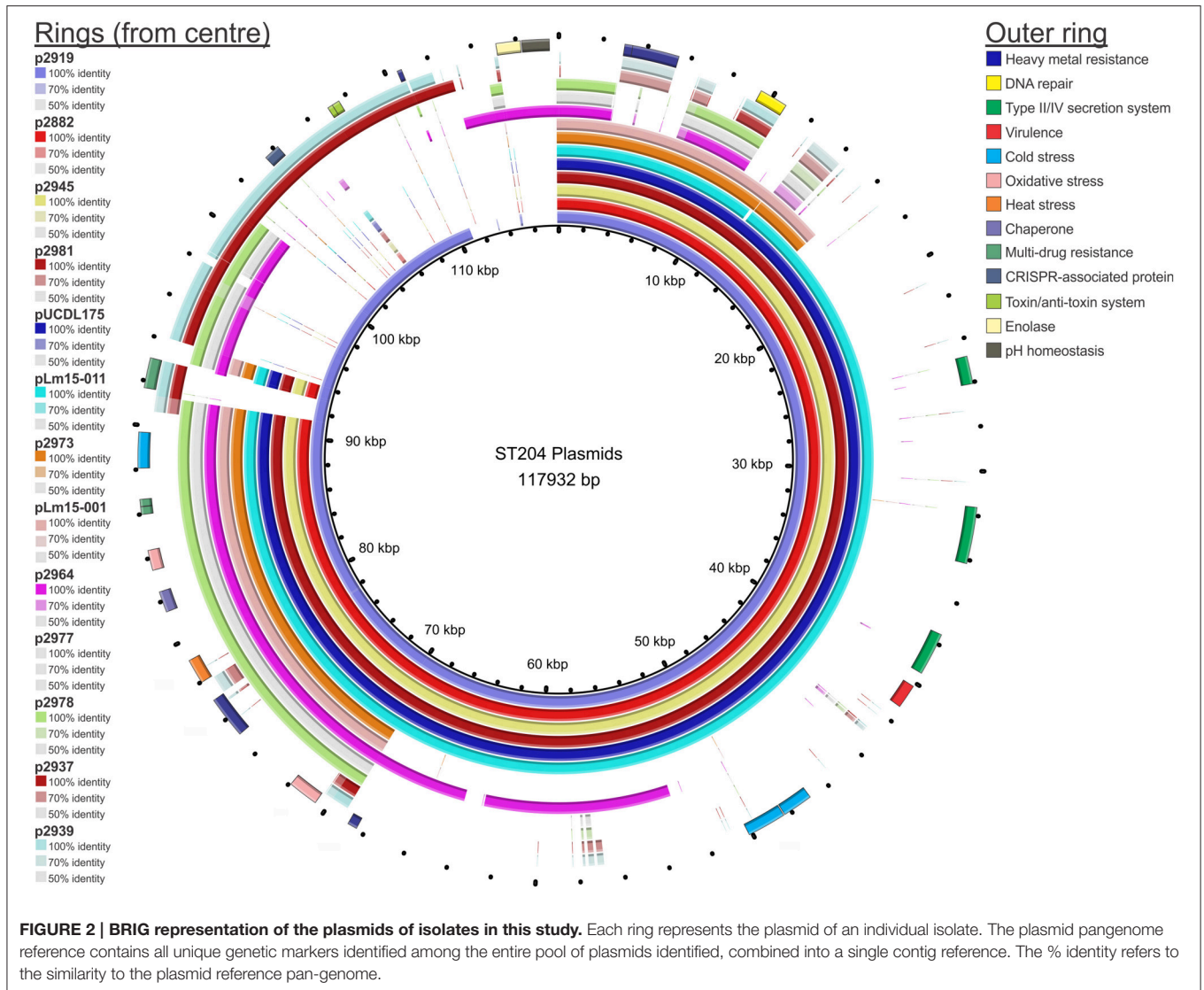
The LIPI-1 pathogenicity island (Vázquez-Boland et al., 2001), comprising key virulence genes, contained a single SNP when compared to that of the EGD-e Type strain (Figure S1). This SNP was positioned in the metalloprotease gene *mpl*, which plays a role in intracellular survival; the SNP resulted in a conservative amino acid (AA) change (D→E) at position 460 in the gene, outside the active site and zinc binding domains. Previous studies have identified two notable mutations in important *L. monocytogenes* virulence markers: truncation of the InlA invasion protein and a deletion in the ActA protein which plays a role in intracellular mobility and cell to cell spread (Jonquières et al., 1998; Moriishi et al., 1998; Nightingale et al., 2005). Analysis of the ST204 genomes of isolates in this study showed that they all encode for full length InlA and ActA proteins. None of the ST204 isolates harbored the LIPI-3 or the newly described LIPI-4 pathogenicity islands (Cotter et al., 2008; Maury et al., 2016).

All ST204 isolates contained the *L. monocytogenes* stress survival islet SSI-1 and shared 100% nucleotide identity to the EGD-e strain, with one exception (Ryan et al., 2010). The ST204 2981 isolate contained a single nucleotide deletion in its *lmo0446* homolog leading to the occurrence of a premature stop codon (PMSC) in the gene sequence, which suggests it produces a truncated 172 AA protein (the wild type protein being 330

AA in length). Nucleotide sequence analysis suggests the 172 AA product to still include the complete catalytic domain and contains all the conserved amino acids of a penicillin V acylase. The *bcrABC* resistance cassette, which contributes to resistance to quaternary ammonium compounds (QACs) was present on the plasmids of 11 isolates as indicated in Table 2 (Elhanafi et al., 2010). The sequence shared 100% identity to that of the corresponding region on the pN1-011A plasmid of the N1-011A strain. These genetic markers provide resistance to a range of stresses and growth limiting conditions including sanitizers used in food processing environments (Elhanafi et al., 2010; Ryan et al., 2010). Taken together, these resistance markers point to the capacity of the ST204 group to colonize a wide range of niches with various associated stress conditions.

## ST204 Plasmids

A comparative BLAST analysis of plasmids from each of the 13 plasmid-containing isolates against a plasmid pangenome pseudomolecule is shown in Figure 2. With the exception of isolates 2937 and 2939, plasmids from other isolates shared an approximately 20 kb region which contained a number of genes linked to stress response. Analysis of the plasmids identified a 91,396 bp plasmid shared by four isolates: p2882, p2945, p2981, and pUCDL175. The plasmid nucleotide sequence was identical for p2882, p2945, and p2981, with one single nucleotide



polymorphism (SNP) difference in pUCDL175. This SNP resulted in a non-conservative AA change in a DEAD/DEAH box helicase-like protein at position AA<sub>332</sub> (pUCDL175 had an isoleucine at this position compared to a threonine in the other isolates). The presence of a conserved plasmid among the four isolates was particularly interesting as one of these isolates, UCL175, was derived from a meat food processing environment in Ireland; the other three were isolated in Australia from a pork meat sample, a meat food processing environment, and a cheese sample. In addition to this, the temporal range of the isolations was over a 12 year period (from the year 2000 through to 2012). This data suggests selection pressure has maintained this plasmid in geographically diverse niches and over a prolonged period of time; with just a single SNP identified in the plasmid of the isolate from Ireland, relative to its three counterparts from Australia. The plasmid contains features of a Type IV secretion system including Tra-family proteins which play a role in conjugal transfer of plasmids in Gram-positive bacteria (Grohmann et al.,

2003). Another feature of this and other plasmids identified in this study is the presence of heavy metal resistance gene operons. Recent evidence suggests very low levels of heavy metals and antibiotics present in the environment can select for plasmid carriage in bacterial species (Gullberg et al., 2014). It may be that this, or other selection factors, while even at very low levels are maintaining the presence of these plasmids in the ST204 isolates and their progeny. As indicated in **Figure 2**, a number of other genes implicated in stress response were identified such as cold, heat, or osmotic stress. Maintaining these plasmids may present a competitive advantage for these isolates, allowing them to colonize and compete in a diverse range of ecological niches and tolerate a range of environmental stressors.

A number of other plasmids shared homology with the 91,396 bp plasmid (the smaller plasmids p2973 and pLm15-011, and the larger p2919 plasmid). This may indicate a shared ancestral plasmid that has undergone genetic rearrangement and divergence over time. Indeed, the remaining plasmids

**TABLE 2 | Presence of selected virulence and stress response markers among isolates in this study.**

| Isolate  | Virulence |        |                 |             | Stress tolerance |               |             |
|----------|-----------|--------|-----------------|-------------|------------------|---------------|-------------|
|          | LIP1-3    | LIP1-4 | <i>inlA</i>     | <i>actA</i> | SSI-1            | <i>bcrABC</i> | <i>qacH</i> |
| 2882     | -         | -      | WT <sup>a</sup> | WT          | +                | +             | -           |
| 2919     | -         | -      | WT              | WT          | +                | +             | -           |
| 2937     | -         | -      | WT              | WT          | +                | -             | -           |
| 2939     | -         | -      | WT              | WT          | +                | -             | -           |
| 2945     | -         | -      | WT              | WT          | +                | +             | -           |
| 2964     | -         | -      | WT              | WT          | +                | +             | -           |
| 2973     | -         | -      | WT              | WT          | +                | +             | -           |
| 2977     | -         | -      | WT              | WT          | +                | +             | -           |
| 2978     | -         | -      | WT              | WT          | +                | +             | -           |
| 2981     | -         | -      | WT              | WT          | + <sup>b</sup>   | +             | -           |
| 3002     | -         | -      | WT              | WT          | +                | -             | -           |
| Lm15-001 | -         | -      | WT              | WT          | +                | +             | -           |
| Lm15-011 | -         | -      | WT              | WT          | +                | +             | -           |
| Lm15-027 | -         | -      | WT              | WT          | +                | -             | -           |
| UCDL175  | -         | -      | WT              | WT          | +                | +             | -           |

SSI-1 is the stress-survival islet. The *bcrABC* cassette and *qacH* are quaternary ammonium compound resistance markers.

<sup>a</sup>WT, codes full-length protein with no truncation or deletion.

<sup>b</sup>Isolate 2981 contains a PMSC in its *lmo0446* homolog.

(p2964, p2977, p2978, p2937, and p2939) shared most of their sequence with p2919, with some minor additional regions as indicated in **Figure 2**. The pLm15-011 plasmid from isolate Lm15-011 had an identical sequence to that of p2882, p2945, and p2981, with the exception of a missing 213 bp (this deleted region included a non-coding region as well as the first 29 bp of a plasmid replication protein). Another variant of the 91,396 bp plasmid was identified in isolate 2919, which contained a larger plasmid with additional genetic features including a CRISPR-associated protein and a toxin/anti-toxin (TA) system (p2919, **Figure 2**). This was identified as the Type II Phd-Doc TA system, whose mode of action targets the 30S ribosomal subunit inhibiting translation elongation (Liu et al., 2008; Unterholzner et al., 2013). Two isolates harbored smaller homologs of the 91,396 bp plasmid: 2973 and Lm15-001. p2973 is 38,115 bp in length and shares 100% identity with nucleotide sequence contained within the 91,396 bp plasmid. pLm15-001 is 38,191 bp in size, and differs with p2973 in that it contains a 76 bp insert and four SNPs in a non-coding region of the plasmid; all CDSs, however, are 100% identical in both plasmids.

The remaining plasmids (p2964, p2977, p2978, p2937, and p2939) are primarily composed of various homologs of other sequence contained in p2919 as illustrated in **Figure 2**; p2964, however, does contain two notable additional CDSs encoding enolase and a gene implicated in pH homeostasis. Two of these plasmids (p2937 and p2939) also contained the Type II Phd-Doc TA system present in p2919. It is worth noting that these ST204 plasmids share a high degree of similarity to the large 148,959 bp pN1-011A plasmid, suggesting variations of this

plasmid may be spread more widely across the *L. monocytogenes* population.

## Transposon Inserts

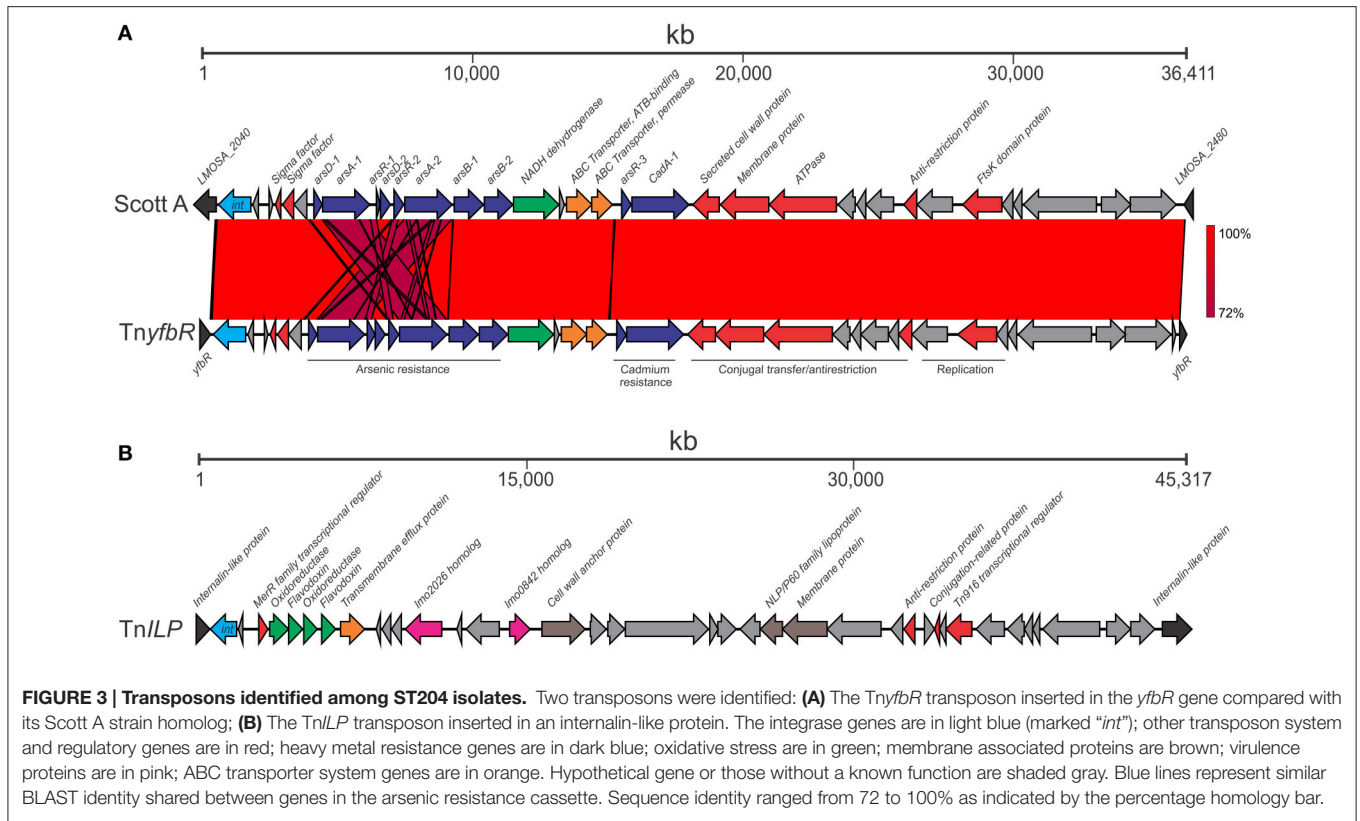
Two transposon insertions were identified among isolates in this study: one in the *yfbR* gene (*Tnyfbr*) and another in an internalin-like protein homolog of the *lmo2026* gene in the EGD-e strain (TnILP). The organization of both transposons are shown in **Figure 3**.

The 35,763 bp *Tnyfbr* transposon was present in eight isolates (**Table 1** and **Figure 1**). This transposon is homologous to a previously identified genomic island in the Scott A outbreak strain (**Figure 3A**; Lee et al., 2013). Four SNPs were identified between the Scott A and ST204 transposon, however the insert site differed between ST204 isolates that harbored the genomic island and Scott A. This may underly results from the study by Lee et al. (2013) suggesting multiple loci for insertion across different strains. It contains an arsenic resistance cassette, which includes the *arsA-1*, *arsA-2*, *arsB-1*, *arsB-2*, *arsD-1*, *arsD-2*, *arsR-1*, and *arsR-2* genes. *arsA* and *arsB* form a complex coupled with ATP which is responsible for extrusion of arsenic from the bacterial cell (Rosen, 2002). Expression is regulated by *arsR* and *arsD* (San Francisco et al., 1990; Wu and Rosen, 1993). This transposon also contains a cadmium resistance cassette. Other notable features include an anti-restriction protein and an FtsK domain protein.

A second novel transposon was identified in 12 ST204 isolates, termed TnILP, and was identified integrated into an internalin-like protein (**Figure 3B**). It is 43,478 bp in length and contains a number of proteins involved in electron transfer such as flavodoxin and oxidoreductase CDSs, including 2,5-diketo-D-gluconic acid reductase. These enzymes have a variety of associated functions, including the oxidative stress response (Gaudu and Weiss, 2000; Mbandi et al., 2007; Chaturongakul et al., 2008; Moyano et al., 2014). This transposon also contained a number of genes encoding cell wall associated proteins including internalin-like LPXGT-motif containing proteins. Two other notable gene homologs of the EGD-e strain, *lmo0842* and *lmo2026*, were present in TnILP. Previous studies using transposon mutagenesis approaches have identified roles for these genes in virulence. An *lmo0842* mutant strain showed decreased ability to proliferate in the liver and spleen (Cummins et al., 2013), whereas a role for *lmo2026* in translocating across the blood-brain barrier and/or subsequent multiplication has been suggested (Autret et al., 2001; Bierne et al., 2007). The potential contribution of the TnILP genes to stress response and virulence, however, requires further study.

## Phage Insert Regions

Four phage insert sites were identified among isolates in this study: *φcomK*, the monocolin locus cryptic prophage, *φtRNA-Arg* and *φRNA-MT*. Analysis with prophage detection program (PHAST) suggests the only intact phage is *φtRNA-Arg*; all others were incomplete phage. All isolates contained at least one phage insert, with a single isolate (2973) containing phage in all four insertion sites. Of the four prophage insertions, two



were highly conserved: the monocin locus phage region (present in all isolates), and a phage insert positioned between the fosfomycin resistance gene *fosX* and an RNA methyltransferase gene ( $\varphi$ RNA-MT, present in both 2973 and Lm15-027 isolates).

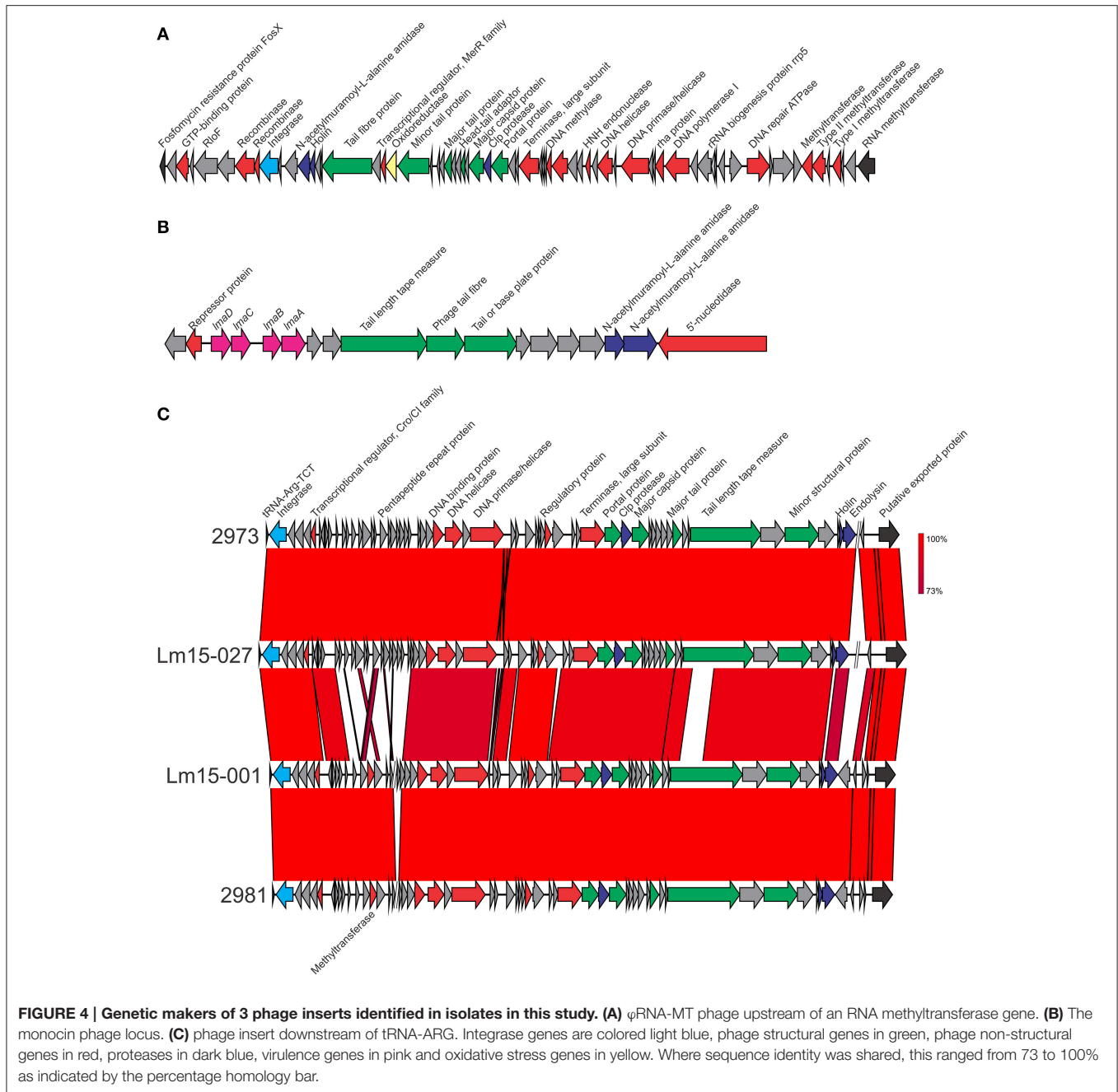
Two isolates harbored the  $\varphi$ RNA-MT phage in their RNA methyltransferase genes (2973 and Lm15-027) with a single SNP in a non-coding sequence being the only difference in nucleotide sequence. This phage is 56,942 bp in length and encodes a number of restriction-modification system genes, including both Type I and Type II methyltransferases. These systems can target foreign invading DNA with restriction endonucleases, and associated methyltransferases protect host DNA from restriction (Wilson and Murray, 1991; Murphy et al., 2013). A HNH family endonuclease is also present in this phage. There are a range of functions associated with these proteins such as excluding other phage in the progeny of cells with mixed phage infections (Goodrich-Blair and Shub, 1996; Moodley et al., 2012). The phage also contained an oxidoreductase.

The monocin locus (**Figure 4B**) is a cryptic prophage conserved across all lineages of *L. monocytogenes* and harbors a complete (*lmaDCBA*) or partial *lma* operon (*lmaDC*) (Schäferkordt and Chakraborty, 1997; Hain et al., 2012). LmaA elicits a hypersensitivity reaction in the immune murine host model, and deletion mutants of *lmaB* and *lmaD* show reduced growth in the model (Hain et al., 2012). This phage is 13,114 bp in length and includes 18 CDSs. This region showed 100% nucleotide sequence identity across all isolates

and shared 99% identity to the same region in the EGD-e strain.

The only intact phage, downstream of tRNA-Arg, was 42,164 bp in length with similar variants identified in four isolates: 2973, 2981, Lm15-001, and Lm15-027. The annotated phage region contained a large proportion of genes coding for proteins with unknown function (**Figure 4C**). While largely conserved across all four isolates, some variations were identified in the phage insert regions (e.g., 2981 and Lm15-001 contained a methyltransferase coding gene not present in the other two isolates).

A phage insert ( $\varphi$ comK) in the *comK* gene (**Figure 5**) was identified in seven isolates, ranging in size from 37,660 bp (isolate 2981) up to 41,592 bp (isolate 2919). Isolates 2964 and 2978 differed from one another in a single SNP present in an *lmo2305* homolog "hypothetical protein" gene in an amino acid change at position 73 (E→G) in 2978; however each other isolate had a distinct *comK* phage region as illustrated in **Figure 4**. Two isolates (2919 and 2973) contained a gene encoding the gp66 protein identified in the *L. monocytogenes* A118 phage (Loessner et al., 2000). This protein shares similarity with the virulence protein LmaC of the monocin phage locus. Interestingly the 2973 isolate also contained another copy of the *lmaC* gene two genes downstream of its gp66 gene. A previous study highlighted the importance of this phage region in host strain escape from activated macrophages by modulating excision of the phage, which in turn controls *comK* integrity (Rabinovich et al., 2012). This excision, however, does not



**FIGURE 4 | Genetic markers of 3 phage inserts identified in isolates in this study. (A)**  $\phi$ RNA-MT phage upstream of an RNA methyltransferase gene. **(B)** The monocin phage locus. **(C)** phage insert downstream of tRNA-ARG. Integrase genes are colored light blue, phage structural genes in green, phage non-structural genes in red, proteases in dark blue, virulence genes in pink and oxidative stress genes in yellow. Where sequence identity was shared, this ranged from 73 to 100% as indicated by the percentage homology bar.

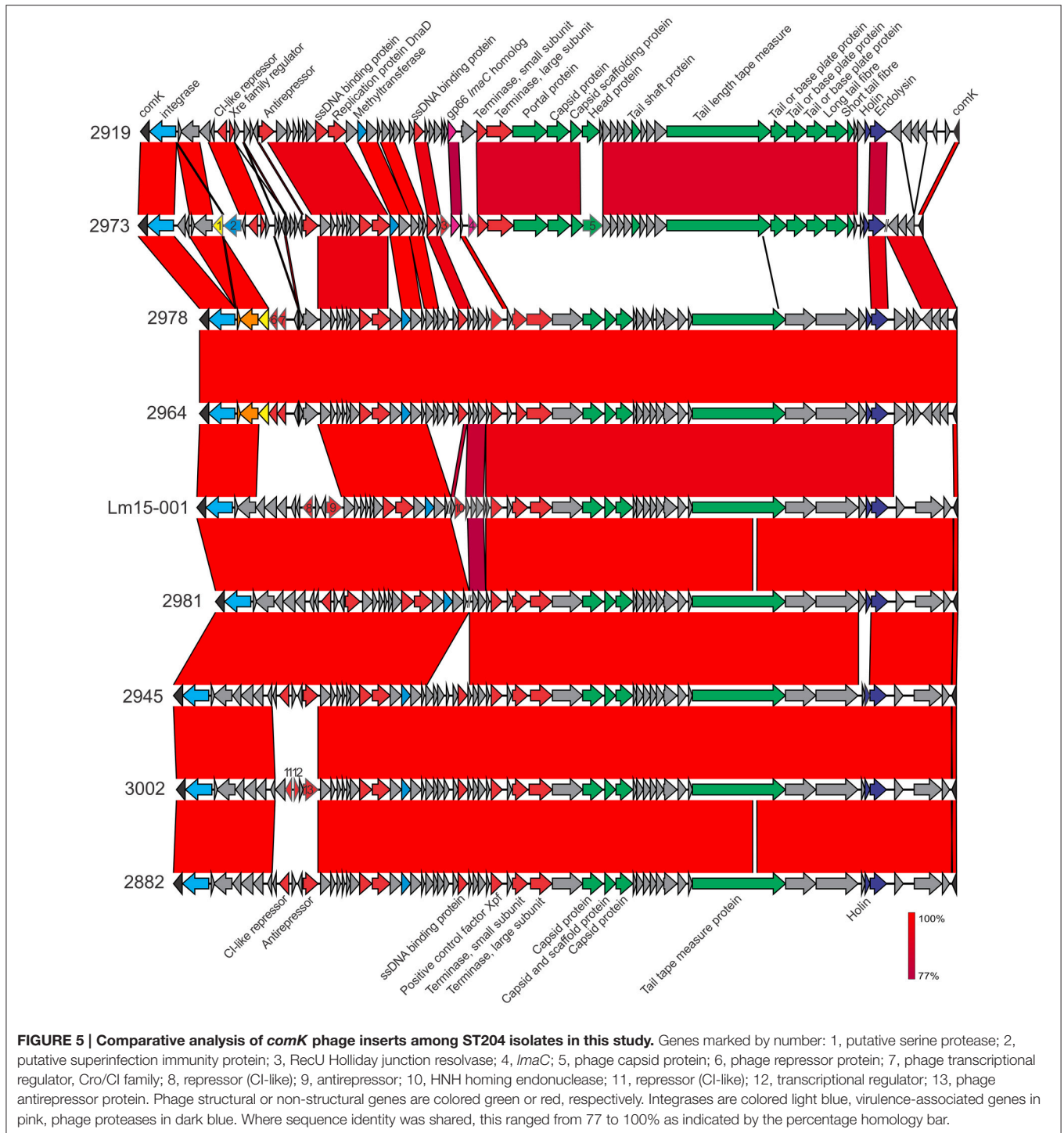
create virions. Another proposed role of the *comK* phage in host cell adaption to specific niches is in colonization of food processing facilities and foods (Verghese et al., 2011). While all isolates in this study were from foods or their associated processing environments, it is not clear if they were persisting at these facilities. The *comK* phage in isolate 2973 also coded a superinfection immunity protein which may play a role in preventing subsequent host infection by other phage (Hyman and Abedon, 2010). All *comK* phage also contained a methyltransferase gene. Isolate 2973 contained a superinfection immunity gene not present in the *comK* phage of other isolates.

Three isolates (2964, 2973, and 2978) possess a serine protease encoding gene, and Lm15-001 *comK* encoded a HNH homing endonuclease.

### CRISPR Regions Among Isolates in This Study

An analysis of each of the 15 isolates in this study using CRISPRfinder software did not identify any confirmed CRISPR regions (Grissa et al., 2007). Two isolates harbored a CRISPR-associated protein on their respective plasmids (2937 and



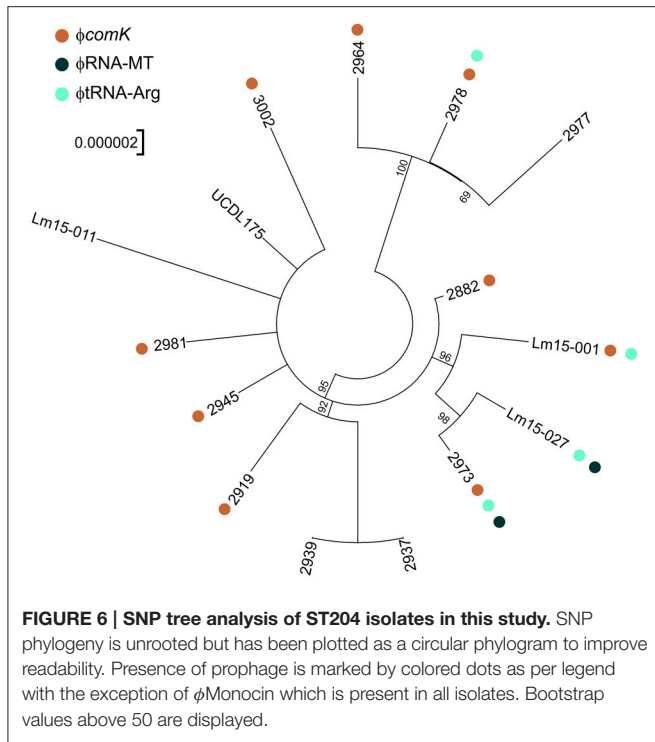


2939) although the plasmids did not contain CRISPR regions (Figure 2).

### SNP Typing of Isolates in This Study

Analysis of the genome similarities through a SNP analysis again highlighted the high degree of identity among the isolates, with 266 SNP loci identified (Figure 6). While three clades can be

readily discerned from the SNP analysis (clade 1 comprising isolates 2964, 2977, and 2978; clade 2 comprising 2973, Lm15-001 and Lm15-027; and clade 3 comprising 2919, 2937 and 2939) the remainder of the taxonomy had a high degree of uncertainty. The  $\phi$ RNA-MT phage was only identified among clade 2 isolates, and similarly the  $\phi$ tRNA-Arg phage was only identified among isolates from clades 1 and 2. Two isolates (2937 and 2939)



clustered together when considering core SNP loci shared by all 15 isolates; a comparison of SNPs limited to these 2 isolates alone identified 24 SNPs differing between them.

## CONCLUSIONS

The ST204 subgroup of *L. monocytogenes* is among the most frequently isolated from food and food associated sources in Australia, has been isolated from other environments and has been implicated in human clinical infections. Results of this study show a diverse accessory genome conserved among ST204 isolates including genetically related plasmids, transposons and phage inserts which appear to be maintained among the geographically diverse population over prolonged periods of

## REFERENCES

- Alikhan, N. F., Petty, N. K., Ben Zakour, N. L., and Beatson, S. A. (2011). BLAST Ring Image Generator (BRIG): simple prokaryote genome comparisons. *BMC Genomics* 12, 1–10. doi: 10.1186/1471-2164-12-402
- Allerberger, F., and Wagner, M. (2010). Listeriosis: a resurgent foodborne infection. *Clin. Microbiol. Infect.* 16, 16–23. doi: 10.1111/j.1469-0691.2009.03109.x
- Autret, N., Dubail, I., Trieu-Cuot, P., Berche, P., and Charbit, A. (2001). Identification of new genes involved in the virulence of *Listeria monocytogenes* by Signature-Tagged Transposon Mutagenesis. *Infect. Immun.* 69, 2054–2065. doi: 10.1128/IAI.69.4.2054-2065.2001
- Aziz, R. K., Bartels, D., Best, A. A., DeJongh, M., Disz, T., Edwards, R. A., et al. (2008). The RAST Server: rapid annotations using subsystems technology. *BMC Genomics* 9:75. doi: 10.1186/1471-2164-9-75
- Bankevich, A., Nurk, S., Antipov, D., Gurevich, A. A., Dvorkin, M., Kulikov, A. S., et al. (2012). SPAdes: a new genome assembly algorithm and

time. Recent studies have demonstrated how selective pressures, often below minimum inhibitory concentrations, can select for bacteria possessing associated resistance determinants (Gullberg et al., 2011). In addition to this, co-selection is often evident when multiple resistance genes (e.g., heavy metals and antibiotics) are harbored on the same genetic element, such as a plasmid (Gullberg et al., 2014). The broad range of antimicrobial and stress resistance genes harbored by ST204 isolates may underlie their capacity to colonize a wide range of niches. This adaptation to a broad range of environmental stress conditions may also be co-selecting for a range of associated virulence markers which has implications for the clinical significance of the ST204 group.

## AUTHOR CONTRIBUTIONS

EF, SF, and PSC conceived and designed the experiments. EF, MB performed all wet laboratory experiments. EF, TA, and PSC conducted bioinformatics analyses. EF, TA, MB, SF, and PSC drafted manuscript. All authors read and approved final manuscript, and agree to be accountable for all aspects of the work in ensuring that questions related to the accuracy or integrity of any part of the work are appropriately investigated and resolved.

## FUNDING

This work was co-funded by the Victorian Government through the Department of Environment and Primary Industries and by the Commonwealth Scientific and Industrial Research Organization.

## SUPPLEMENTARY MATERIAL

The Supplementary Material for this article can be found online at: <http://journal.frontiersin.org/article/10.3389/fmicb.2016.02057/full#supplementary-material>

**Figure S1 | Nucleotide alignment of the conserved serotype 1/2a ST204 LIPI-1 pathogenicity island with the serotype 1/2a ST35 EGD-e reference strain.**

- its applications to single-cell sequencing. *J. Comput. Biol.* 19, 455–477. doi: 10.1089/cmb.2012.0021
- Bierne, H., Sabet, C., Personnic, N., and Cossart, P. (2007). Internalins: a complex family of leucine-rich repeat-containing proteins in *Listeria monocytogenes*. *Microbes. Infect.* 9, 1156–1166. doi: 10.1016/j.micinf.2007.05.003
- Bolger, A. M., Lohse, M., and Usadel, B. (2014). Trimmomatic: a flexible trimmer for Illumina sequence data. *Bioinformatics* 30, 2114–2120. doi: 10.1093/bioinformatics/btu170
- Chaturongakul, S., Raengpradub, S., Wiedmann, M., and Boor, K. J. (2008). Modulation of stress and virulence in *Listeria monocytogenes*. *Trends Microbiol.* 16, 388–396. doi: 10.1016/j.tim.2008.05.006
- Chenal-Francois, V., Lopez, J., Cantinelli, T., Caro, V., Tran, C., Leclercq, A., et al. (2011). Worldwide Distribution of Major clones of *Listeria monocytogenes*. *Emerg. Infect. Dis.* 17, 1110–1112. doi: 10.3201/eid1706.101778
- Cotter, P. D., Draper, L. A., Lawton, E. M., Daly, K. M., Groeger, D. S., Casey, P. G., et al. (2008). Listeriolysin S, a novel peptide haemolysin associated

- with a subset of Lineage I *Listeria monocytogenes*. *PLoS Pathog.* 4:e1000144. doi: 10.1371/journal.ppat.1000144
- Cummins, J., Casey, P. G., Joyce, S. A., and Gahan, C. G. (2013). A mariner transposon-based signature-tagged mutagenesis system for the analysis of oral infection by *Listeria monocytogenes*. *PLoS ONE* 8:e75437. doi: 10.1371/journal.pone.0075437
- den Bakker, H. C., Cummings, C. A., Ferreira, V., Vatta, P., Orsi, R. H., Degoricija, L., et al. (2010). Comparative genomics of the bacterial genus *Listeria*: genome evolution is characterized by limited gene acquisition and limited gene loss. *BMC Genomics* 11:688. doi: 10.1186/1471-2164-11-688
- Ebner, R., Stephan, R., Althaus, D., Brisse, S., Maury, M., and Tasara, T. (2015). Phenotypic and genotypic characteristics of *Listeria monocytogenes* strains isolated during 2011–2014 from different food matrices in Switzerland. *Food Control* 57, 321–326. doi: 10.1016/j.foodcont.2015.04.030
- Elhanafi, D., Dutta, V., and Kathariou, S. (2010). Genetic characterization of plasmid-associated benzalkonium chloride resistance determinants in a *Listeria monocytogenes* strain from the 1998–1999 outbreak. *Appl. Environ. Microbiol.* 76, 8231–8238. doi: 10.1128/AEM.02056-10
- Fox, E. M., deLappe, N., Garvey, P., McKeown, P., Cormican, M., Leonard, N., et al. (2012). PFGE analysis of *Listeria monocytogenes* isolates of clinical, animal, food and environmental origin from Ireland. *J. Med. Microbiol.* 61(Pt 4), 540–547. doi: 10.1099/jmm.0.036764-0
- Fox, E., O'Mahony, T., Clancy, M., Dempsey, R., O'Brien, M., and Jordan, K. (2009). *Listeria monocytogenes* in the Irish dairy farm environment. *J. Food Prot.* 72, 1450–1456. doi: 10.4315/0362-028X-72.7.1450
- Freitag, N. E., Port, G. C., and Miner, M. D. (2009). *Listeria monocytogenes* - from saprophyte to intracellular pathogen. *Nat. Rev. Microbiol.* 7, 623–628. doi: 10.1038/nrmicro2171
- Gaudu, P., and Weiss, B. (2000). Flavodoxin mutants of *Escherichia coli* K-12. *J. Bacteriol.* 182, 1788–1793. doi: 10.1128/jb.182.7.1788-1793.2000
- Goodrich-Blair, H., and Shub, D. A. (1996). Beyond homing: competition between intron endonucleases confers a selective advantage on flanking genetic markers. *Cell* 84, 211–221. doi: 10.1016/S0092-8674(00)80976-9
- Gray, M. J., Zadoks, R. N., Fortes, E. D., Dogan, B., Cai, S., Chen, Y., et al. (2004). *Listeria monocytogenes* isolates from foods and humans form distinct but overlapping populations. *Appl. Environ. Microbiol.* 70, 5833–5841. doi: 10.1128/aem.70.10.5833-5841.2004
- Grif, K., Patscheider, G., Dierich, M. P., and Allerberger, F. (2003). Incidence of fecal carriage of *Listeria monocytogenes* in three healthy volunteers: a one-year prospective stool survey. *Eur. J. Clin. Microbiol. Infect. Dis.* 22, 16–20. doi: 10.1007/s10096-002-0835-9
- Grissa, I., Vergnaud, G., and Pourcel, C. (2007). CRISPRFinder: a web tool to identify clustered regularly interspaced short palindromic repeats. *Nucleic Acids Res.* 35(Suppl. 2), W52–W57. doi: 10.1093/nar/gkm360
- Grohmann, E., Muth, G., and Espinosa, M. (2003). Conjugative plasmid transfer in Gram-positive bacteria. *Microbiol. Mol. Biol. Rev.* 67, 277–301. doi: 10.1128/mmr.67.2.277-301.2003
- Gullberg, E., Albrecht, L. M., Karlsson, C., Sandegren, L., and Andersson, D. I. (2014). Selection of a multidrug resistance plasmid by sublethal levels of antibiotics and heavy metals. *MBio* 5:e01918-14. doi: 10.1128/mBio.01918-14
- Gullberg, E., Cao, S., Berg, O. G., Ilbäck, C., Sandegren, L., Hughes, D., et al. (2011). Selection of resistant bacteria at very low antibiotic concentrations. *PLoS Pathog.* 7:e1002158. doi: 10.1371/journal.ppat.1002158
- Haase, J. K., Didelot, X., Lecuit, M., Korkeala, H., and Achtman, M. (2014). The ubiquitous nature of *Listeria monocytogenes* clones: a large-scale Multilocus Sequence Typing study. *Environ. Microbiol.* 16, 405–416. doi: 10.1111/1462-2920.12342
- Hain, T., Ghai, R., Billion, A., Kuenne, C. T., Steinweg, C., Izar, B., et al. (2012). Comparative genomics and transcriptomics of lineages I, II, and III strains of *Listeria monocytogenes*. *BMC Genomics* 13:144. doi: 10.1186/1471-2164-13-144
- Ho, A. J., Ivanek, R., Grohn, Y. T., Nightingale, K. K., and Wiedmann, M. (2007). *Listeria monocytogenes* fecal shedding in dairy cattle shows high levels of day-to-day variation and includes outbreaks and sporadic cases of shedding of specific *L. monocytogenes* subtypes. *Prev. Vet. Med.* 80, 287–305. doi: 10.1016/j.prevetmed.2007.03.005
- Hyman, P., and Abedon, S. T. (2010). “Chapter 7 - Bacteriophage host range and bacterial resistance,” in *Advances in Applied Microbiology*, eds S. Sariaslani and G. M. Gadd (Cambridge, MA: Academic Press) 217–248.
- Jonquière, R., Bierre, H., Mengaud, J., and Cossart, P. (1998). The *inlA* gene of *Listeria monocytogenes* LO28 harbors a nonsense mutation resulting in release of internalin. *Infect. Immun.* 66, 3420–3422.
- Kearse, M., Moir, R., Wilson, A., Stones-Havas, S., Cheung, M., Sturrock, S., et al. (2012). Geneious Basic: an integrated and extendable desktop software platform for the organization and analysis of sequence data. *Bioinformatics* 28, 1647–1649. doi: 10.1093/bioinformatics/bts199
- Kwong, J. C., Mercouliou, K., Tomita, T., Easton, M., Li, H. Y., Bulach, D. M., et al. (2016). Prospective whole-genome sequencing enhances national surveillance of *Listeria monocytogenes*. *J. Clin. Microbiol.* 54, 333–342. doi: 10.1128/jcm.02344-15
- Lee, S., Rakic-Martinez, M., Graves, L. M., Ward, T. J., Siletsky, R. M., and Kathariou, S. (2013). Genetic determinants for cadmium and arsenic resistance among *Listeria monocytogenes* serotype 4b isolates from sporadic human listeriosis patients. *Appl. Environ. Microbiol.* 79, 2471–2476. doi: 10.1128/AEM.03551-12
- Liu, M., Zhang, Y., Inouye, M., and Woychik, N. A. (2008). Bacterial addiction module toxin Doc inhibits translation elongation through its association with the 30S ribosomal subunit. *Proc. Natl. Acad. Sci. U.S.A.* 105, 5885–5890. doi: 10.1073/pnas.0711949105
- Loessner, M. J., Inman, R. B., Lauer, P., and Calendar, R. (2000). Complete nucleotide sequence, molecular analysis and genome structure of bacteriophage A118 of *Listeria monocytogenes*: implications for phage evolution. *Mol. Microbiol.* 35, 324–340. doi: 10.1046/j.1365-2958.2000.01720.x
- Maury, M. M., Tsai, Y.-H., Charlier, C., Touchon, M., Chenal-Francisque, V., Leclercq, A., et al. (2016). Uncovering *Listeria monocytogenes* hypervirulence by harnessing its biodiversity. *Nat. Genet.* 48, 308–313. doi: 10.1038/ng.3501
- Mbandi, E., Phinney, B. S., Whitten, D., and Shelef, L. A. (2007). Protein variations in *Listeria monocytogenes* exposed to sodium lactate, sodium diacetate, and their combination. *J. Food Prot.* 70, 58–64. doi: 10.4315/0362-028X-70.1.58
- Moodley, S., Maxwell, K. L., and Kanelis, V. (2012). The protein gp74 from the bacteriophage HK97 functions as a HNH endonuclease. *Protein Sci.* 21, 809–818. doi: 10.1002/pro.2064
- Moriishi, K., Terao, M., Koura, M., and Inoue, S. (1998). Sequence analysis of the *actA* gene of *Listeria monocytogenes* isolated from human. *Microbiol. Immunol.* 42, 129–132. doi: 10.1111/j.1348-0421.1998.tb02261.x
- Moyano, A. J., Tobares, R. A., Rizzi, Y. S., Krapp, A. R., Mondotte, J. A., Bocco, J. L., et al. (2014). A long-chain flavodoxin protects *Pseudomonas aeruginosa* from oxidative stress and host bacterial clearance. *PLoS Genet.* 10:e1004163. doi: 10.1371/journal.pgen.1004163
- Muller, A., Rychli, K., Muhterem-Uyar, M., Zaiser, A., Stessl, B., Guinane, C. M., et al. (2013). Tn6188 - a novel transposon in *Listeria monocytogenes* responsible for tolerance to benzalkonium chloride. *PLoS ONE* 8:e76835. doi: 10.1371/journal.pone.0076835
- Murphy, J., Mahony, J., Ainsworth, S., Nauta, A., and van Sinderen, D. (2013). Bacteriophage orphan DNA methyltransferases: insights from their bacterial origin, function, and occurrence. *Appl. Environ. Microbiol.* 79, 7547–7555. doi: 10.1128/aem.02229-13
- Nightingale, K. K., Windham, K., Martin, K. E., Yeung, M., and Wiedmann, M. (2005). Select *Listeria monocytogenes* subtypes commonly found in foods carry distinct nonsense mutations in *inlA*, leading to expression of truncated and secreted internalin A, and are associated with a reduced invasion phenotype for human intestinal epithelial cells. *Appl. Environ. Microbiol.* 71, 8764–8772. doi: 10.1128/AEM.71.12.8764-8772.2005
- Rabinovich, L., Sigal, N., Borovok, I., Nir-Paz, R., and Herskovits, A. A. (2012). Prophage excision activates *Listeria* competence genes that promote phagosomal escape and virulence. *Cell* 150, 792–802. doi: 10.1016/j.cell.2012.06.036
- Rosen, B. P. (2002). Biochemistry of arsenic detoxification. *FEBS Lett.* 529, 86–92. doi: 10.1016/S0014-5793(02)03186-1
- Ryan, S., Begley, M., Hill, C., and Gahan, C. G. (2010). A five-gene stress survival islet (SSI-1) that contributes to the growth of *Listeria monocytogenes* in suboptimal conditions. *J. Appl. Microbiol.* 109, 984–995. doi: 10.1111/j.1365-2672.2010.04726.x
- San Francisco, M. J., Hope, C. L., Owolabi, J. B., Tisa, L. S., and Rosen, B. P. (1990). Identification of the metalloregulatory element of the plasmid-encoded arsenical resistance operon. *Nucleic Acids Res.* 18, 619–624.

- Sauders, B. D., Overdeest, J., Fortes, E., Windham, K., Schukken, Y., Lembo, A., et al. (2012). Diversity of *Listeria* species in urban and natural environments. *Appl. Environ. Microbiol.* 78, 4420–4433. doi: 10.1128/AEM.00282-12
- Schäferkordt, S., and Chakraborty, T. (1997). Identification, cloning, and characterization of the *lma* operon, whose gene products are unique to *Listeria monocytogenes*. *J. Bacteriol.* 179, 2707–2716.
- Schmitz-Esser, S., Müller, A., Stessl, B., and Wagner, M. (2015). Genomes of sequence type 121 *Listeria monocytogenes* strains harbor highly conserved plasmids and prophages. *Front. Microbiol.* 6:380. doi: 10.3389/fmicb.2015.00380
- Sullivan, M. J., Petty, N. K., and Beatson, S. A. (2011). Easyfig: a genome comparison visualizer. *Bioinformatics* 27, 1009–1010. doi: 10.1093/bioinformatics/btr039
- Treangen, T. J., Ondov, B. D., Koren, S., and Phillippy, A. M. (2014). The Harvest suite for rapid core-genome alignment and visualization of thousands of intraspecific microbial genomes. *Genome Biol.* 15:524. doi: 10.1186/s13059-014-0524-x
- Unterholzner, S. J., Poppenberger, B., and Rozhon, W. (2013). Toxin–antitoxin systems: biology, identification, and application. *Mob. Genet. Elements* 3:e26219. doi: 10.4161/mge.26219
- Van Stelten, A., Simpson, J. M., Ward, T. J., and Nightingale, K. K. (2010). Revelation by single-nucleotide polymorphism genotyping that mutations leading to a premature stop codon in *inlA* are common among *Listeria monocytogenes* isolates from ready-to-eat foods but not human listeriosis cases. *Appl. Environ. Microbiol.* 76, 2783–2790. doi: 10.1128/AEM.02651-09
- Vázquez-Boland, J. A., Domínguez-Bernal, G., González-Zorn, B., Kreft, J., and Goebel, W. (2001). Pathogenicity islands and virulence evolution in *Listeria*. *Microbes Infect.* 3, 571–584. doi: 10.1016/S1286-4579(01)01413-7
- Vázquez-Boland, J. A., Kuhn, M., Berche, P., Chakraborty, T., Domínguez-Bernal, G., Goebel, W., et al. (2001). *Listeria* pathogenesis and molecular virulence determinants. *Clin. Microbiol. Rev.* 14, 584–640. doi: 10.1128/CMR.14.3.584-640.2001
- Verghese, B., Lok, M., Wen, J., Alessandria, V., Chen, Y., Kathariou, S., et al. (2011). *comK* prophage junction fragments as markers for *Listeria monocytogenes* genotypes unique to individual meat and poultry processing plants and a model for rapid niche-specific adaptation, biofilm formation, and persistence. *Appl. Environ. Microbiol.* 77, 3279–3292. doi: 10.1128/AEM.00546-11
- Wilson, G. G., and Murray, N. E. (1991). Restriction and modification systems. *Annu. Rev. Genet.* 25, 585–627. doi: 10.1146/annurev.ge.25.120191.003101
- Wu, J., and Rosen, B. P. (1993). The *arsD* gene encodes a second trans-acting regulatory protein of the plasmid-encoded arsenical resistance operon. *Mol. Microbiol.* 8, 615–623. doi: 10.1111/j.1365-2958.1993.tb01605.x

**Conflict of Interest Statement:** The authors declare that the research was conducted in the absence of any commercial or financial relationships that could be construed as a potential conflict of interest.

Copyright © 2016 Fox, Allnut, Bradbury, Fanning and Chandry. This is an open-access article distributed under the terms of the Creative Commons Attribution License (CC BY). The use, distribution or reproduction in other forums is permitted, provided the original author(s) or licensor are credited and that the original publication in this journal is cited, in accordance with accepted academic practice. No use, distribution or reproduction is permitted which does not comply with these terms.