



Proteomics identifies *Bacillus cereus* EntD as a pivotal protein for the production of numerous virulence factors

Hélène Omer^{1,2,3}, Béatrice Alpha-Bazin³, Jean-Luc Brunet⁴, Jean Armengaud³ and Catherine Duport^{1,2*}

¹ Université d'Avignon et des Pays de Vaucluse, UMR408 Sécurité et Qualité des Produits d'Origine Végétale, Avignon, France, ² INRA, UMR408 Sécurité et Qualité des Produits d'Origine Végétale, Avignon, France, ³ CEA-Marcoule, DSV/IBITEC-S/SPI/Li2D, Laboratory "Innovative technologies for Detection and Diagnostic", Bagnols-sur-Cèze, France, ⁴ INRA, UR406 Abeilles et Environnement, Avignon, France

OPEN ACCESS

Edited by:

Manuel Kleiner,
University of Calgary, Canada

Reviewed by:

Moshe Shemesh,
Agricultural Research Organization,
Israel
Birgit Voigt,
University of Greifswald, Germany

*Correspondence:

Catherine Duport,
UMR 408, INRA, 228 route de
l'Aérodrome, CS 40509, Domaine
Saint Paul, Site Agroparc, 84914
Avignon Cedex 09, France
catherine.duport@univ-avignon.fr

Specialty section:

This article was submitted to
Microbial Physiology and Metabolism,
a section of the journal
Frontiers in Microbiology

Received: 28 July 2015

Accepted: 07 September 2015

Published: 07 October 2015

Citation:

Omer H, Alpha-Bazin B, Brunet J-L,
Armengaud J and Duport C (2015)
Proteomics identifies *Bacillus cereus*
EntD as a pivotal protein for the
production of numerous virulence
factors. *Front. Microbiol.* 6:1004.
doi: 10.3389/fmicb.2015.01004

Bacillus cereus is a Gram-positive pathogen that causes a wide variety of diseases in humans. It secretes into the extracellular milieu proteins that may contribute directly or indirectly to its virulence. EntD is a novel exoprotein identified by proteogenomics of *B. cereus* ATCC 14579. We constructed a $\Delta entD$ mutant and analyzed the impact of *entD* disruption on the cellular proteome and exoproteome isolated from early, late, and stationary-phase cultures. We identified 308 and 79 proteins regulated by EntD in the cellular proteome and the exoproteome, respectively. The contribution of these proteins to important virulence-associated functions, including central metabolism, cell structure, antioxidative ability, cell motility, and toxin production, are presented. The proteomic data were correlated with the growth defect, cell morphology change, reduced motility, and reduced cytotoxicity of the $\Delta entD$ mutant strain. We conclude that EntD is an important player in *B. cereus* virulence. The function of EntD and the putative EntD-dependent regulatory network are discussed. To our knowledge, this study is the first characterization of an Ent family protein in a species of the *B. cereus* group.

Keywords: comparative proteomics, cellular proteome, exoproteome, *Bacillus cereus*, metabolism, virulence

Introduction

Microbial pathogens are involved in a wide range of severe, and sometimes fatal, human diseases, including nosocomial infections, foodborne infections and toxic shock syndrome. The pathogenesis of the majority of bacterial diseases is a multifactorial process. Five common, crucial steps may be listed: (i) resistance to environmental stresses during infection, (ii) adhesion to the host cell, (iii) invasion, (iv) damage to host tissues, and (v) subversion of the host immune response (Finlay and Falkow, 1997). Completion of each stage is dependent on orchestrated activities of specific exoproteins. Exoproteins, which play a pivotal role in the adaptability of the pathogen to the specificities of the host's intracellular environment and promote efficient infection, are recognized as virulence factors (Wilson et al., 2002).

Bacillus cereus is a Gram-positive, motile, rod-shaped bacterium closely related to *Bacillus anthracis* and *Bacillus thuringiensis*. *B. anthracis* is a notorious pathogen that causes anthrax in human and animals (Goel, 2015). *B. thuringiensis* is an insect pathogen used in crop protection (Drobniewski, 1993; Pardo-López et al., 2013). *B. cereus* is primarily associated with foodborne gastrointestinal (GI) infections but it is also responsible for systemic diseases and nosocomial infections (Kotiranta et al., 2000; Bottone, 2010; Ramarao and Sanchis, 2013). *B. cereus* is also highly associated with endophthalmitis (Callegan et al., 2007). The pathogenicity of *B. cereus* in endophthalmitis is associated not only with the production of virulence factors but also with the inflammogenicity of the cell wall and the motility of the bacterium within the eye (Callegan et al., 2005; Parkunan et al., 2014). *B. cereus* uses peritrichous flagella as motility appendages (Salveti et al., 2007). Flagellum assembly takes place in the context of the whole cell and is mediated by the flagellar export apparatus, which is homologous to a type III secretion system (Guttenplan et al., 2013). The contribution of this flagellar apparatus to *B. cereus* virulence has been documented by several studies (Ghelardi et al., 2007; Salveti et al., 2007; Senesi et al., 2010). Flagella are also important for biofilm formation (Houry et al., 2010). Bacteria inside biofilms are protected from the host immune system, antimicrobials, and other external insults (Flemming and Wingender, 2010). Biofilm formation in *B. cereus* involves the main virulence regulator PlcR; this points toward the inevitable connection of virulence factor production with biofilm formation in this bacterium (Hsueh et al., 2006).

Previous shotgun proteomic studies provided evidence that *B. cereus*, like other pathogens, can deploy a large arsenal of virulence factors to promote infection (Clair et al., 2010, 2013; Laouami et al., 2014; Madeira et al., 2015). Some of these virulence factors are abundant components of the *B. cereus* exoproteome (Madeira et al., 2015). Among them are the three most extensively studied diarrheal enterotoxins: hemolysin BL (Hbl), nonhemolytic enterotoxin (Nhe), and cytotoxin K (CytK). Hbl is composed of three distinct protein components, L2, L1, and B, which are all required to obtain full enterotoxigenic activity. Nhe is also a three-component enterotoxin. The three components, NheA, NheB, and NheC, differ from those of Hbl. Unlike Hbl and Nhe, CytK is a single component protein (Beecher et al., 1995; Stenfors Arnesen et al., 2008). Hbl, Nhe, and CytK have shown strong disruptive effects on epithelial cells and all the corresponding genes belong to the PlcR virulence regulon (Gohar et al., 2008). In addition, the *B. cereus* exoproteome contains numerous PlcR-independent virulence factors. Some of these have been shown to play a role in *B. cereus* pathogenicity, such as InhA1 and HlyII (Ramarao and Lereclus, 2005; Andreeva et al., 2006; Guinebretiere et al., 2010). Many are still uncharacterized, such as the proteins EntA, EntB, and EntC, which are major contributors to the *B. cereus* exoproteome (Clair et al., 2010). The abundance level of virulence factors detected in the *B. cereus* exoproteome is regulated in response to challenging conditions. This is partly achieved through the regulation of specific genes for each particular growth condition but also by the activation of global metabolic regulatory pathways such as those

involving the repressor of branched amino acids CodY (Lindbäck et al., 2012), and the redox regulators ResDE, Fnr, Rex, and OhrRA (Duport et al., 2006; Zigha et al., 2007; Esbelin et al., 2008, 2009; Messaoudi et al., 2010). All of these regulators contribute to the maintenance of intracellular homeostasis during growth.

Despite the identification and characterization of several virulence factors, the pathogenicity of *B. cereus* is still poorly understood and needs further investigation. The aim of this study was to evaluate the role of EntD, an exoprotein identified by proteogenomics of *B. cereus* ATCC 14579 (Ivanova et al., 2003), in the virulence of *B. cereus* ATCC 14579 by in-depth characterization of an *entD* knockout mutant. We used proteomics to investigate the profiles and functions of cellular and extracellular proteins controlled by EntD. Proteomic data were correlated with cell structure, metabolic, and phenotypic changes. The results indicate that EntD is a key extracellular virulence-associated factor, which regulates bacterial processes such as, motility, and toxin production, through an as-yet unidentified signaling pathway.

Materials and Methods

Bacterial Strains and Growth Conditions

Wild-type *B. cereus* ATCC 14579 without its pBClin15 plasmid (Ivanova et al., 2003) and an $\Delta entD$ mutant were grown in MOD medium supplemented with 30 mM glucose as the carbon source, as previously described (Rosenfeld et al., 2005). Non-controlled aerobic batch cultures were performed in 3 L flasks containing 500 mL culture medium. Flasks were incubated with shaking (200 rpm) at 37°C. The inoculum was a sample of an overnight culture harvested by centrifugation, washed and diluted in fresh medium to obtain an initial optical density at 600 nm of 0.02. Anaerobic cultures were performed in 20 mL Hungate tubes equipped with open-top caps and rubber septa. Each vial was filled with 10 mL culture medium. Oxygen-free N₂ gas was vigorously flushed through a needle into the culture medium for 3 min after inoculation. Tubes were incubated with stirring (200 rpm) at 37°C. In control experiments (cell-free systems), resazurin bleaching was monitored to ensure that the conditions were fully anaerobic. *B. cereus* growth was monitored spectrophotometrically at 600 nm. The specific growth rate (μ) was determined using the modified Gompertz equation (Zwietering et al., 1990, 1992). Samples (50 mL) were harvested at early exponential growth phase (EE), late exponential growth phase (LE), and stationary phase (S) for proteome analysis. Cells and culture supernatants were separated by centrifugation at 10,000 × *g* for 10 min at 4°C. Cell pellets were immediately stored at -80°C until analysis. Culture supernatants were first filtered through a low-adsorption cellulose acetate membrane filter with 45 μ m pore size and then through a 20- μ m-pore-size filter. Filtered fractions (40 mL) were stored at -80°C until analysis.

Construction of $\Delta entD$ Mutant Cells and Complementation

A *Bam*HI-*Eco*RI DNA fragment of 980 bp encompassing the *BC_3716* locus was amplified by PCR using

chromosomal DNA as the template and the primer pair 5'-ggatccAAATTTCTAAAAATCTGTTGCTATAATG-3' plus 5'-gaattcTTGCCCCCAGCTATTAGGACTA-3'. The amplified DNA fragment was cloned into pCRXL-TOPO (Invitrogen). The resulting pCRXLentD plasmid was digested with *PsiI*. A 1.5 kb *SmaI* fragment containing the spectinomycin resistance expression cassette *spc* (Murphy, 1985) was purified from pDIA (Laouami et al., 2011) and ligated into *PsiI*-digested pCRXLentD. The resulting plasmid, pCRXL-*entD*Δ*spc*, was digested with *EcoRI* plus *BamHI*. The *entD*Δ*spc*-*entD* fragment was subsequently inserted between the corresponding pMAD sites. The resulting plasmid was introduced into *B. cereus* strains by electroporation. The *entD* gene was deleted by a double crossover event (Arnaud et al., 2004). Chromosomal allele exchanges were confirmed by PCR with oligonucleotide primers located upstream and downstream of the DNA regions used for allelic exchange. To complement the *entD* gene *in trans*, the 1429 bp *entD* locus was first amplified using the primer pair 5'- gaattcTTGGTAAAAGATGTAACGAATTGTG-3' and 5'- agatctCGCCCTAAATTGTTTACTACGG-3' and then cloned into pCRXL-TOPO. The PCR fragment was cut with *BamHI* and *BglII* and ligated to similarly digested pHT304 (Arantes and Lereclus, 1991). The integrity of the insert in the recombinant vector was verified by sequencing and the vector was then used to transform the *B. cereus* mutant strain.

Protein Sample Preparation for Shotgun Proteomics

Cell pellets were thawed on ice and extracted as previously described (Clair et al., 2012). Fractions of 40 mL *B. cereus* supernatants were thawed on ice and precipitated using the deoxycholate/trichloroacetic acid method as previously described (Clair et al., 2010; Madeira et al., 2015). Intracellular proteins from the 6 samples (biological triplicates for the wild-type and the mutant strains) and extracellular proteins from the 18 samples (biological triplicates from the 3 time-conditions for the wild-type and mutant strains) were resolved on NuPAGE Novex 4–12% Bis-Tris gels (Invitrogen) with a short migration of 5 min at 200 V using MES supplemented with antioxidant solution as running buffer and as previously described (Hartmann and Armengaud, 2014; Hartmann et al., 2014). Gels were stained with Simply Blue Safe Stain, a ready-to-use Coomassie G-250 stain from Invitrogen. After destaining, the proteins of each gel lane were cut as a single band, which was then further divided into 2 fractions, each corresponding to a 3 × 4 mm² polyacrylamide band. The resulting polyacrylamide gel pieces were processed for further destaining, iodoacetamide treatment, and in-gel proteolysis with trypsin (Roche) in the presence of ProteaseMax additive (Promega), as previously described (Clair et al., 2010). The two digests obtained from the same sample were pooled as a single peptide mixture. Exponential phase samples were injected without being diluted, due to their lower protein content, while the samples collected at LE and S growth phases were diluted 1:20 in 0.1% trifluoroacetic acid prior to nanoLC-MS/MS analysis.

NanoLC-MS/MS Analysis

Technical duplicates were carried out for the 6 intracellular samples and the 18 extracellular samples, resulting in 12 and 36 samples, respectively. NanoLC-MS/MS analysis was performed for each technical replicate on an LTQ-Orbitrap XL hybrid mass spectrometer (ThermoFisher) coupled to an UltiMate 3000 nRSLC system (Dionex-ThermoFisher). This system was operated as described previously (Clair et al., 2012). Peptide mixtures (5 μL) were loaded and desalted on-line on a reverse-phase precolumn (Acclaim PepMap100 C18, 5 μm bead size, 100 Å pore size, 300 μm i.d. × 5 mm, Dionex-ThermoFisher). Peptides were then resolved on a Dionex nanoscale C₁₈ PepMap 100TM C₁₈ capillary column (3 μm bead size, 100-Å pore size, 75 μm i.d. × 15 cm) at a flow rate of 0.3 μL/min with a gradient of CH₃CN, 0.1% formic acid prior to injection into the ion trap mass spectrometer. Peptides were separated using a 90 min gradient from 4 to 40% solvent B (0.1% HCOOH, 100% CH₃CN). Solvent A was 0.1% HCOOH, 100% H₂O. Full-scan mass spectra were measured from *m/z* 300 to 1800 with the LTQ-Orbitrap XL mass spectrometer in data-dependent mode using the TOP3 strategy. In brief, a scan cycle was initiated with a full scan of high mass accuracy in the Orbitrap followed by MS/MS scans in the linear ion trap on the three most abundant precursor ions with 60 s dynamic exclusion of previously selected ions. For cell pellet extracts the column used was 50 cm long and was operated with a 180 min gradient.

Assignment of MS/MS Spectra to Peptide Sequences and Protein Validation

Peak lists were generated with the MASCOT DAEMON software (version 2.3.2) from Matrix Science using the extract_msn.exe data import filter from the Xcalibur FT package (version 2.0.7) proposed by ThermoFisher. Data import filter options were set as follows: minimum mass, 400 *m/z*; maximum mass, 5000 *m/z*; grouping tolerance, 0; intermediate scans, 0; and threshold, 1000. Using the MASCOT search engine (version 2.3.02) from Matrix Science, we searched all MS/MS spectra against an in-house polypeptide sequence database (BCRUS_09) containing the sequences of all annotated proteins encoded by the *B. cereus* ATCC 14579 chromosome (NC_004722) and the plasmid pBClin15 (NC_004721) and proteins identified by a proteogenomic study (Madeira et al., 2015 and unpublished results). This database comprises 5299 polypeptide sequences, totaling 1,464,675 amino acids. Searches for tryptic peptides were performed with the following parameters: full trypsin specificity, mass tolerance of 5 ppm on the parent ion and 0.6 Da on the MS/MS, static modifications of carboxyamidomethylated Cys (+57.0215), and dynamic modifications of oxidized Met (+15.9949). The maximum number of missed cleavages was set at 2. All peptide matches with a peptide score below a *p*-value of 0.05 were filtered by the IRMa 1.28.0 parser (Dupierris et al., 2009). A protein was considered validated when at least two different peptides were detected in the same sample. The false-positive rate for protein identification was estimated using the appropriate decoy database as below 0.1% with these parameters. The mass spectrometry proteomics data have been deposited in the ProteomeXchange Consortium

(<http://proteomecentral.proteomexchange.org>) via the PRIDE partner repository (<http://www.ebi.ac.uk/pride>) with the dataset identifiers PXD001482 and PXD001483.

Spectral Count-based Protein Quantification and Statistical Analysis

The number of MS/MS spectra per protein was determined in the 3 different nanoLC-MS/MS biological replicates for each condition. Proteins were further considered for comparison only if peptides were seen in at least 3 of the nanoLC-MS/MS experiments for a specific condition. Outlier data points were not removed. The data from each growth condition were compared by a T-Fold method using PatternLab software 2.0.0.13 (Carvalho et al., 2008). The fold change and *p*-value cut-offs were set at 1.5 and 0.01, respectively. The false discovery rate with these settings was below 15%.

Hydrogen Peroxide Killing Assays

B. cereus ATCC 14579 and $\Delta entD$ mutant were grown to mid-log phase ($OD_{600} \sim 0.3$) in MOD medium supplemented with 30 mM glucose. The cells were then centrifuged and resuspended in an equal volume of phosphate-buffered saline solution (PBS). Hydrogen peroxide challenge assays were assessed by exposing samples to 0.5 and 1 mM H_2O_2 , respectively. Aliquots (100 μ L) of the samples were diluted in H_2O , appropriate dilutions of the culture were plated onto LB agar, and after overnight incubation at 37°C the colony forming units (CFUs) were counted. All the experiments were performed at least in triplicate, and at least 2 technical replicates from each dilution step were carried out to determine the number of CFUs.

Motility, Biofilm, and Autolysis Assays

The swimming and swarming abilities of *B. cereus* ATCC 14579 and $\Delta entD$ mutant strains were determined on TrB (Tryptone, 10 g/L; NaCl, 5 g/L) plates containing 2% and 0.2% (w/v) Bacto-agar (Difco), respectively (Salveti et al., 2007). The cells were grown to mid-log phase and the OD_{600} was adjusted to 0.5. Five microliters of cell suspensions were spotted onto the center of TrB plates, and growth halo diameters were measured after 1 to 15 days of incubation at 37°C.

Biofilm formation of *B. cereus* ATCC 14579 and $\Delta entD$ mutant strains were determined as follows. Cells were grown overnight at 37°C in BHI medium (Biokar Diagnostics), washed with BHI medium and diluted to an OD_{600} of 1. Two hundred microliters were added to the wells of 96-well plates and incubated for 24 h at 37°C without agitation. Biofilms were stained with 200 μ L 1% (w/v) crystal violet for 20 min and washed 3 times with PBS. Crystal violet bound to biofilm was solubilized using 200 μ L 100% ethanol. Biofilms were quantified by measuring the optical density due to crystal violet at 590 nm. Assays were repeated 10 times.

The autolytic rates of *B. cereus* ATCC 14579 and $\Delta entD$ mutant strains were determined from cells grown in MOD medium supplemented with 30 mM glucose and harvested at mid-log phase ($OD_{600} \sim 0.3$). The cells were washed with PBS, resuspended in the same buffer to an $OD_{600} \sim 0.5$ and incubated at 37°C. The autolytic rate was expressed as a percentage decrease

of the OD_{600} after 72 h (Raddadi et al., 2005). These experiments were performed in triplicate.

Statistical difference between the wild-type and *entD* strains was evaluated by Student's *t*-test.

Electron Microscopy

B. cereus ATCC 14579 and $\Delta entD$ mutant strains were grown to mid-log phase ($OD_{600} \sim 0.3$) in MOD medium supplemented with 30 mM glucose. Ultrathin sections of bacteria were prepared as previously described (Pandiani et al., 2010). Observations at high magnification (up to 35,000x) were performed under a transmission electron microscope (TEM; FEI-Philips CM10; Philips, Eindhoven, The Netherlands). Negative staining was used to visualize flagella at 7000x magnification.

Cytotoxicity Toward Caco-2 Cells

Human colon adenocarcinoma Caco-2 cells were cultured in high-glucose Dulbecco's modified Eagle's medium (DMEM, Ozyme) supplemented with 1% nonessential amino acids and 10% fetal calf serum. Cells were incubated at 37°C under an atmosphere of 5% CO_2 and 95% relative humidity. The culture medium was replaced three times a week. Passage was performed at 80% confluence. All studies were performed between passages 44 and 56. For cytotoxicity tests, cells were seeded in 96-well culture plates in 100 μ L culture medium at a density of 1.5×10^4 cells/well. Ten to fifteen days after seeding, cells formed a dome epithelium and were exposed to bacterial exoproteins. Exoprotein samples were prepared from *B. cereus* ATCC 14579 and $\Delta entD$ supernatants harvested at EE, LE and S growth phases (Figure S1) and diluted in DMEM to reach a final protein amount of either 10 or 100 μ g in 20 μ L. Cytotoxicity was assessed by measuring the mitochondrial activity using the permeant tetrazolium salt 3-(4,5-dimethylthiazol-2-yl)-2,5-diphenyltetrazolium bromide (MTT) as previously described (Vidau et al., 2009). Briefly, after 21, 45 and 69 h exposure to bacterial exoproteins, 50 μ L MTT (0.5 mM in PBS) were added and cells were incubated for 3 h at 37°C. The cells were then washed three times with PBS and formazan crystals were dissolved with 200 μ L DMSO. The absorbance at 550 nm was recorded using 100 μ L of the solution. Each experiment was repeated at least three times in quadruplicate.

Mapping Transcriptional Start Site and Real-Time RT-PCR Analyses

Total RNA was isolated from cell pellets as previously described (Brillard et al., 2010). The 5'-end of *entD* mRNA was mapped as previously described (Clair et al., 2010). The *entD* specific primers SP1, SP2 and SP3 were: 5'-TGAACATATCCAACCTTTT-3', 5'-GCACGAACATTTAATACGCC-3' and 5'-TGTTTCCGC TTTAGCAGAACC-3', respectively. Real-time RT-PCR was performed using the iScript™ One-Step RT-PCR Kit with SYBR® Green following the manufacturer's protocol (Biorad). The reactions were run using the MiniOpticon Real-Time PCR (BioRad). The *entD*-specific primer pair used in this study was: 5'-CGAAAACAAAGCAAATGGAGGC-3' and 5'-TCCCACTGAACACTTTACCTACA-3'. The other primer pairs used in the present study have been described previously (Clair

et al., 2010). Genomic DNA contamination was tested in a control reaction that did not contain reverse transcriptase. The efficiency of the primer pair was tested by amplifying subgenomic DNA.

Results

Discovery of a Novel *ent* Family Gene, *entD*, in *B. cereus* ATCC 14579

Proteogenomic analysis of the *B. cereus* ATCC 14579 exoproteome identified 4 peptides that could be mapped to the BC_3716 locus (Figure 1A), which was annotated as a noncoding pseudogene (Ivanova et al., 2003). Protein BLAST analysis of the identified peptides resulted in 100% identity matches to proteins annotated as putative enterotoxin/cell wall binding proteins or hypothetical proteins in other *B. cereus* group strains, suggesting a DNA sequencing error. We sequenced a 1429 bp PCR product encompassing BC_3716 and identified a frameshift error due to the insertion of a cytosine at the genomic position 3681749 of the annotated NC_004722 chromosome (Figure S1). The corrected sequence of the *B. cereus* ATCC 14579 BC_3716 open reading frame comprised 987 bp and was deposited in the NCBI database (BankIt1833097 Bacillus KT159458).

We investigated the transcription of BC_3716 in *B. cereus* ATCC 14579 cells grown aerobically in unregulated batch cultures on glucose-containing MOD medium by reverse transcription PCR analysis. The results indicated that early exponential growth phase ($\mu = \mu_{\max}$) supported the highest expression of this gene (Table S1). A transcriptional start site (G) located 26 bp from the translational start site (ATG) was determined by 5'PCR (Figure S1). Upstream of this

transcriptional start site, we identified a putative housekeeping σA type -10 sequence (5'-TATAAT-3') and a σD type -35 sequence (5'-CTAAA-3'). The BC_3716 locus was preceded by a putative operon BC3720-BC3718 and followed by a potential terminator loop ($\Delta G^\circ = -19.8$ kcal/mol), suggesting that it may be transcribed as a single unit.

The corrected BC_3716 coding sequence encodes a protein of 316 amino acids with an estimated molecular mass of 33463.9 Da and an isoelectric point of 8.93 (Figure 1B). The first 24 residues of the N-terminal sequence encoded a peptide signal, which was probably cleaved in the mature protein. The protein exhibits two N-terminus SH3_3 domains (PF08239) known to be involved in protein-protein interactions together with a C-terminus putative cell wall binding domain named 3D domain (PF06725) (<http://pfam.xfam.org/search/sequence>). The protein encoded by BC_3716 shares high similarities with the exoproteins EntA, EntB, and EntC (69, 63, and 65% sequence identity, respectively Figure S2) (Clair et al., 2010). Based on these significant similarities, we proposed to name the protein encoded by BC_3716, EntD, and the corresponding gene *entD*.

Cell Growth and Division of $\Delta entD$

To investigate the role of *entD*, we constructed a $\Delta entD$ mutant by introducing a spectinomycin-resistance cassette into the corresponding gene of *B. cereus* strain ATCC 14579. We did not detect *entD* mRNA by RT-PCR nor peptides assigned to EntD by proteomic analyses, proving that the genomic disruption of the gene generated a null allele. Growth features of the $\Delta entD$ mutant and the parental ATCC 14579 strain were compared. Table 1 shows that *entD* disruption significantly decreased the *B. cereus* growth rate and the acetate overflow (by ~50%) without

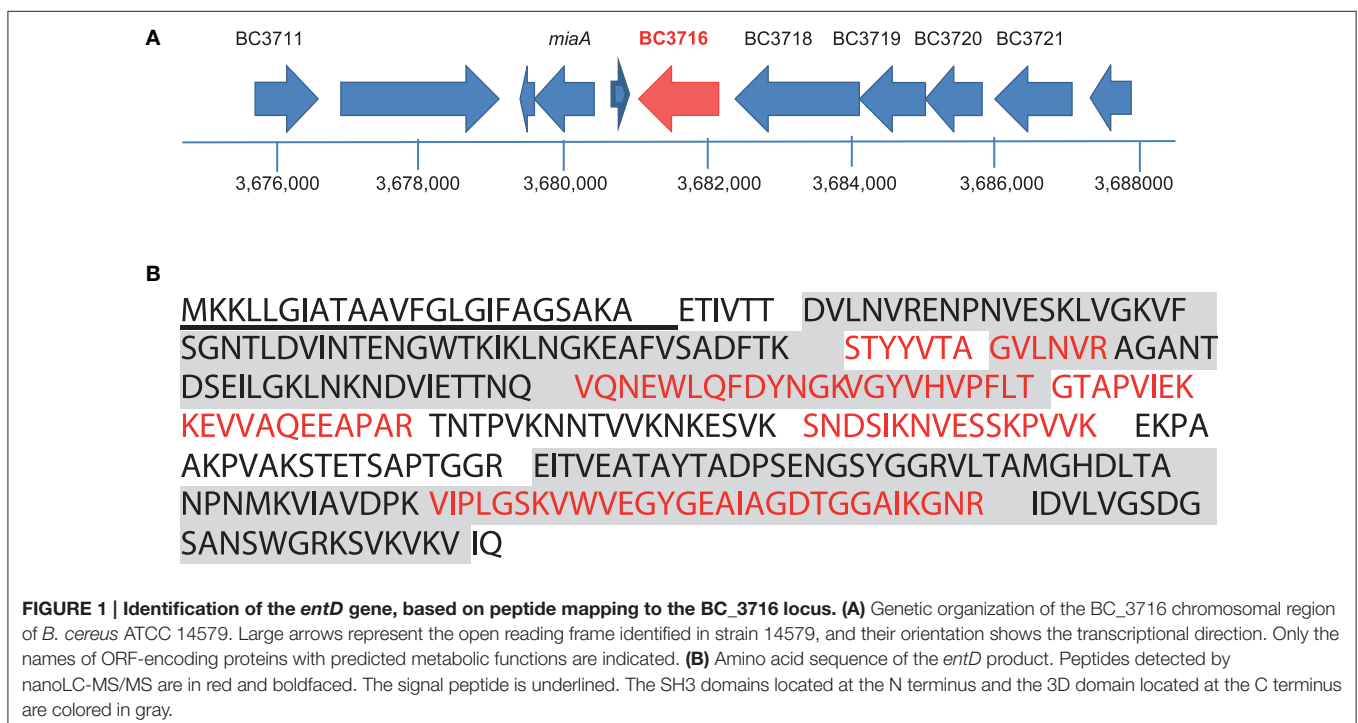


TABLE 1 | Growth parameters and yield of end products obtained during pH- non-controlled batch cultures of *B. cereus* $\Delta entD$ and its parental strain ATCC 14579^a.

	<i>B. cereus</i> strains	
	WT	$\Delta entD$
λ (h)	2.41 ± 0.41	2.43 ± 0.54
μ_{max} (h ⁻¹)	1.30 ± 0.19	0.69 ± 0.12
Final OD ₆₀₀	1.20 ± 0.12	1.44 ± 0.10
Final biomass (mg.L ⁻¹)	328 ± 23	326 ± 27
Final pH	5.36 ± 0.02	5.57 ± 0.02
Maximal specific glucose consumption (mmol.g ⁻¹ .h ⁻¹)	72 ± 6	40 ± 4
Y _{biomass} (g.mol ⁻¹)	18 ± 6	17 ± 4
Y _{acetate} (g.mol ⁻¹)	0.25 ± 0.05	0.13 ± 0.03

^aCultures were grown on MOD medium containing 30 mM glucose. Values are means of results from triplicate cultures.

a significant change in final biomass, probably by decreasing the glucose uptake rate (Rosenfeld et al., 2005). We tested whether anaerobic growth of *B. cereus* cells on glucose-containing MOD medium was altered by *entD* disruption. The results showed that the $\Delta entD$ mutant grew slower than the wild-type ($\mu_{max} = 0.50 \pm 0.05$ compared to 0.70 ± 0.02). These results indicate that *entD* disruption impacts glucose catabolism in an oxygen-independent manner.

The effects of *entD* disruption on cell morphology during growth were studied by phase-contrast microscopy (Figure 2A). The chains of cells of the parental strain were shortest during exponential growth phase (2 cells) and reached their maximum length (4–8 cells) as the culture entered stationary phase. The $\Delta entD$ mutant showed a 2- to 3-fold increase in chain length relative to wild-type during the exponential phase. To ascertain that $\Delta entD$ did not impair cell division, we compared the capacity of the mutant and wild-type strains to form colony forming units on LB agar plates. Neither of the assays supported a difference between the $\Delta entD$ and wild-type strains (data not shown). When *B. cereus* cells were viewed by thin-section transmission electron microscopy, we noted that $\Delta entD$ cells tended to remain attached together (Figure 2B) and the thickness of the $\Delta entD$ cell wall was greater than in WT cells (Figure 2C). Taken together, these results suggest that *entD* mutation disturbs the cell wall and perturbs cell separation. We then examined the consequences of cell wall disturbance on autolytic activity in exponentially growing cells. The autolytic rate was measured after 72 h at 37°C (Raddadi et al., 2005). We found that $\Delta entD$ had a higher autolytic rate (84 ± 3%) than wild-type (77 ± 2%).

Complementation for growth of the nonpolar *entD* mutant in *B. cereus* ATCC 14579 was not possible using a multicopy pHT304-based plasmid. To ascertain that *entD* was transcribed and translated from the plasmid, we measured the abundance level of *entD* mRNA by RT-PCR and the abundance level of EntD by MS/MS (Table S1). The results showed that *entD* was overexpressed in the complemented strain ($\Delta entD$ -pHT304*entD*) compared with the wild-type strain (WT/pHT304). This probably explains why the wild-type

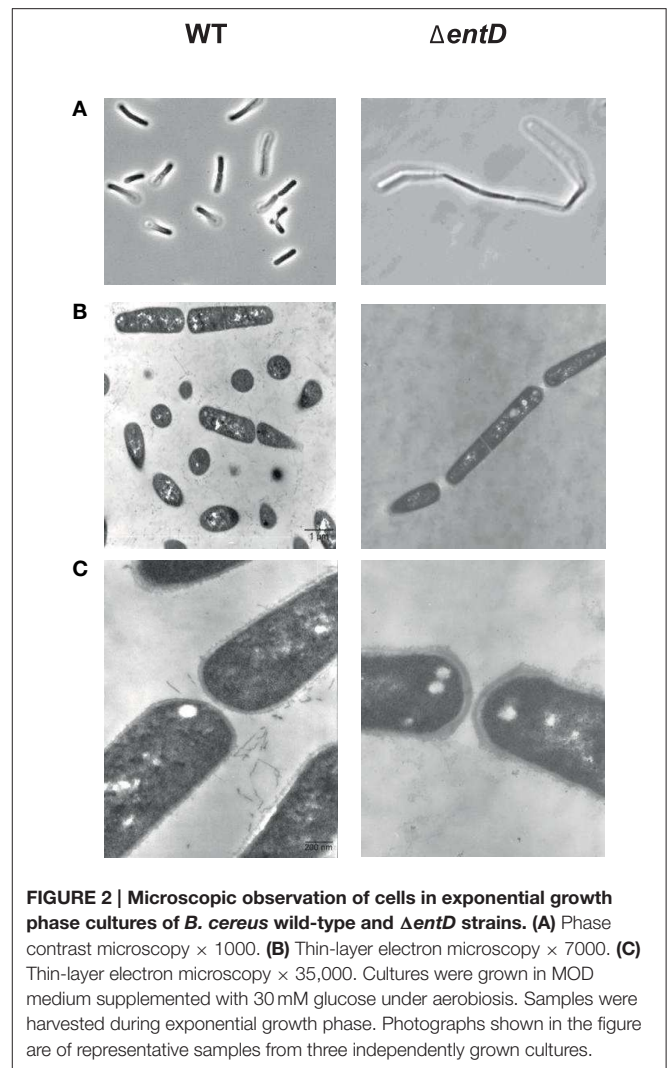
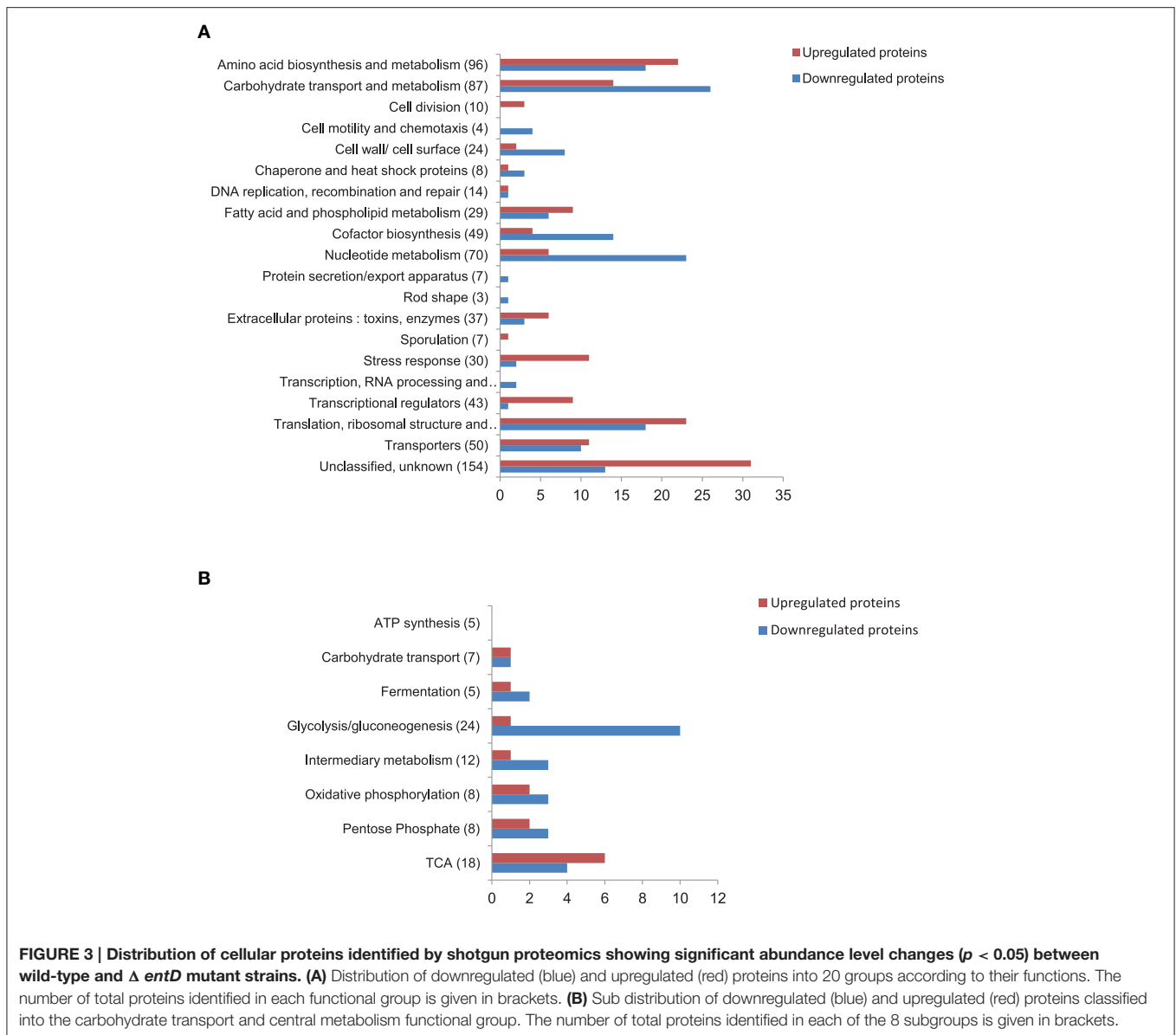


FIGURE 2 | Microscopic observation of cells in exponential growth phase cultures of *B. cereus* wild-type and $\Delta entD$ strains. (A) Phase contrast microscopy × 1000. **(B)** Thin-layer electron microscopy × 7000. **(C)** Thin-layer electron microscopy × 35,000. Cultures were grown in MOD medium supplemented with 30 mM glucose under aerobiosis. Samples were harvested during exponential growth phase. Photographs shown in the figure are of representative samples from three independently grown cultures.

phenotype was not restored by complementation (Sprynski et al., 2012).

Proteomic Response to *entD* Disruption during Active Growth

To explain the growth impairment of $\Delta entD$ cells, we analyzed the cellular proteome changes caused by *entD* disruption in exponentially grown cells ($\mu = \mu_{max} \pm 5\%$, Figure S3) by means of a label-free proteomic strategy conducted on triplicate biological samples for the $\Delta entD$ mutant and the wild-type strain (Clair et al., 2013). A total of 41,998 and 52,169 MS/MS spectra were recorded for $\Delta entD$ and WT, respectively (Table S2). From $\Delta entD$ and WT cells, 637 and 715 proteins were identified, respectively. Supplemental Table S3 presents the list of these proteins categorized into 20 functional groups. We identified 308 proteins with significant abundance level changes ($p < 0.05$) in $\Delta entD$ compared with WT, based on spectral counts (Table S4). Among these, 154 proteins were upregulated in the $\Delta entD$ mutant compared with WT, while 154 were downregulated. Figure 3A showed that $\Delta entD$ disruption alters most of the functional categories. However, it did not similarly alter the

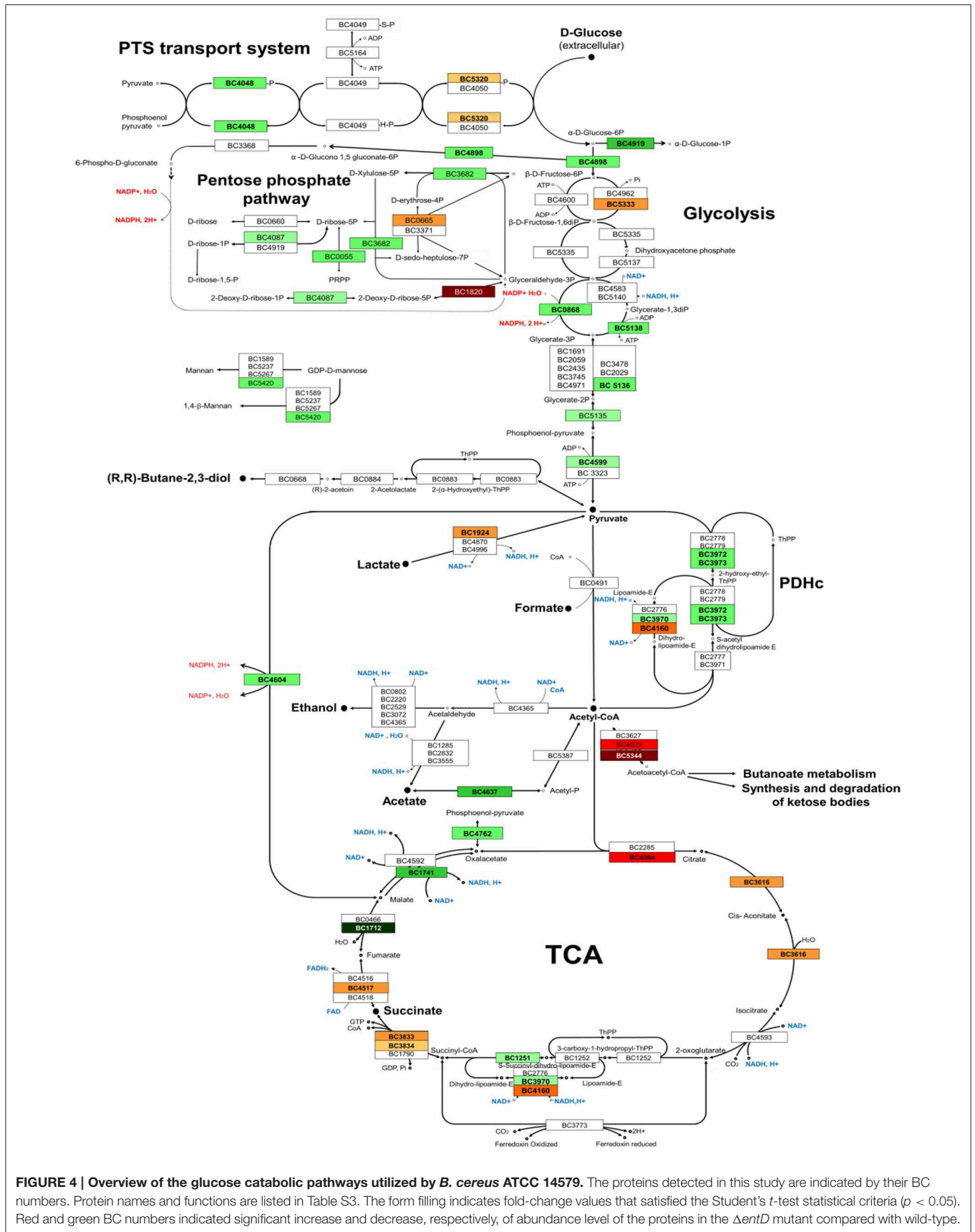


functional categories and subcategories in terms of the ratio of upregulated vs. downregulated proteins.

Focus on Glucose Catabolism

The functional class named carbohydrate transport and central metabolism was subdivided into 8 groups according to the functional criteria: (1) ATP synthesis, (2) carbohydrate transport, (3) fermentation, (4) glycolysis/gluconeogenesis, (5) intermediary metabolism, (6) oxidative phosphorylation, (7) pentose phosphate pathway, and (8) tricarboxylic acid (TCA) cycle. **Figure 3B** shows that proteins related to glycolysis were mainly downregulated in the $\Delta entD$ mutant, which supports the lower glycolytic rate observed in this strain (**Table 1**). Glycolysis produces pyruvate, which is then decarboxylated into acetyl-CoA via the pyruvate dehydrogenase complex (PDC).

Three components of this complex were detected in our study (BC_3970, BC_3972, and BC_3973) and all of them showed a decrease in their abundance in the mutant strain (**Figure 4**). The reactions catalyzed by PDC serve to interconnect the metabolic pathways of glycolysis, acetate metabolism, and fatty acid oxidation to the TCA cycle. Interestingly, the abundance levels of the two proteins that convert acetyl-CoA into acetate (phosphotransacetylase, Pta, BC_5387) and acetate kinase (Ack, BC_4637) were significantly lower in $\Delta entD$ (**Table S4, Figure 4**), accordingly to the lower production of acetate in this strain. In contrast, the quantities of acetyltransferases that convert acetyl-CoA into acetoacetylCoA were significantly increased in the mutant strain. Citrate synthase (CitZ, BC_4594), which condensates acetyl-CoA with oxaloacetate to form citrate, was significantly more abundantly detected in the mutant strain



compared with the wild-type strain. In contrast, we noted a significant downregulation of fumarate dehydrogenase (Fum B, BC_1712) and malate dehydrogenase (Mdh, BC_1741), which converts malate into oxaloacetate (Table S4, **Figure 4**). Taken together these changes may drive the TCA cycle in the forward direction and allow high ATP generation in a background of a less active glycolysis. Consistent with these proteomic results, we did not observe growth yield change between the mutant and the WT strains (**Table 1**).

Five proteins assigned to the pentose phosphate pathways showed significant abundance level changes (Table S4, **Figure 4**). One of these, the deoxyribose-phosphate aldolase (DeoC), was strongly increased in the mutant strain ($\log_2 = 6.6$, $p < 0.001$). DeoC catalyzes the conversion of 2-deoxy-D-ribose-5-phosphate into glyceraldehyde-3-phosphate and acetaldehyde and allows cells to maintain a balance pool of deoxynucleosides. The gene encoding DeoC (BC_1820) belongs to the DeoR regulon of *B. cereus* (<http://regprecise.lbl.gov>). Proteomic analyses detected another DeoR-regulated protein (Pdp, pyrimidine-nucleoside phosphorylase encoded by BC_1822), which also showed a significant abundance level increase in the mutant strain ($\log_2 = 4.8$, $p = 1.10^5$). This protein is involved in pyrimidine metabolism.

Nucleotide, Amino Acid and Fatty Acid Metabolism, and Cofactor Biosynthesis

The majority of the differentially expressed enzymes involved in the biosynthesis of nucleotides were downregulated in the $\Delta entD$ mutant (**Figure 3A**). However, like Pdp, the nucleotide diphosphate kinase Ndk (BC_1515) was upregulated in the mutant strain ($\log_2 = 1.3$, $p = 0.01$). Ndk catalyzes the reversible transfer of the 5'-terminal phosphate from NTPs to NDPs (or their deoxy derivatives) to generate specific NTPs or dNTPs and plays an important role in bacterial growth, virulence, cell signaling and polysaccharide synthesis (Chakrabarty, 1998). Thirteen of the 49 proteins classified as cofactor biosynthesis-related proteins were downregulated in the $\Delta entD$ mutant. This was particularly marked for proteins involved in thiamine biosynthesis (Table S4). In contrast, 4 proteins were significantly upregulated in the $\Delta entD$ strain. Among these, we found the inorganic polyphosphate/ATP-NAD kinase PpnK (BC_4642, $\log_2 = 2.7$, $p < 0.01$), which is regarded as a key enzyme in NAPH synthesis and, hence, in numerous cellular processes (Mori et al., 2004). Interestingly, the $\Delta entD$ mutation favored the upregulation of proteins related to fatty acid and phospholipid metabolism and amino acid metabolism (**Figure 3A**).

Cell Wall

The majority of the differentially expressed cell wall-associated proteins (9/10) were downregulated in the $\Delta entD$ strain compared with wild-type, including 5 proteins that were downregulated by <2-fold (Table S4). Furthermore, 4 were proteins (BC_5264, BC_5272, BC_5277, BC_5278) that are encoded by genes belonging to the 20 kb chromosomal cluster (BC5263–BC5279), which is involved in polysaccharide biosynthesis (Ivanova et al., 2003; Hwang et al., 2014). We also noted the low p -value associated with the \log_2 (fold-change)

of BC_5273 ($\log_2 = -0.9$, $p = 0.053$), indicating that it is reasonably likely that the PalI protein (Hwang et al., 2014) is less abundant in the mutant strain than in the WT strain. In addition, we noted the significant upregulation of a putative N-acetylmuramoyl-L-alanine amidase (CwlC, BC_5234, $\log_2 = 2.1$, $p = 0.009$). Globally, these changes may contribute to the cell wall ultrastructure difference observed between the mutant and the wild-type (**Figure 2C**).

Stress Response

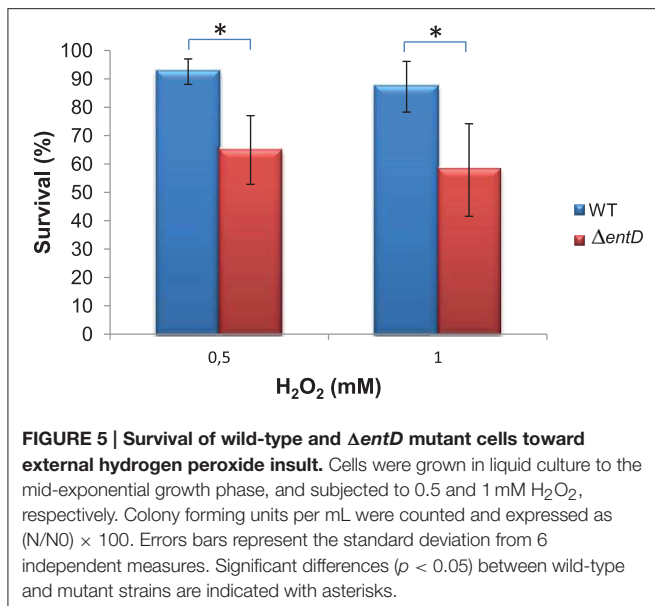
Proteins classified in the stress response group were mainly upregulated by the $\Delta entD$ mutation (**Figure 3A**). In particular, the $\Delta entD$ mutation significantly increased the abundance level of (i) components of the general stress response system, such as the universal stress protein BC_4625 and the Ter proteins (Taylor and Zhulin, 1999; Anantharaman et al., 2012), (ii) thiol-specific stress-related proteins, such as the azoreductase (BC_2194) (Leelakriangsak et al., 2008), the thioredoxin-dependent thiol peroxidase (BC_0517), and the alkyl hydroperoxide reductase (BC_0377), and (iii) other stress-related proteins (Table S4). The higher abundance of these proteins may reflect increased endogenous ROS production in $\Delta entD$ growing cells. Increased endogenous ROS production can translate into increased killing by oxidants (Brynildsen et al., 2013). To evaluate the impact of EntD deficiency on *B. cereus* resistance to oxidant, *B. cereus* cells were exposed to hydrogen peroxide. **Figure 5** shows that aerobically grown $\Delta entD$ cells were more susceptible to H₂O₂ deleterious effects than wild-type cells.

Transcriptional Regulators

The transcriptional regulators ResD, Rex, and AbrB are central regulators of the primary metabolism in *B. cereus* (Duport et al., 2006; Lucking et al., 2009; Laouami et al., 2014). Their abundance level changes were significantly modified in the $\Delta entD$ mutant [\log_2 (fold-change) = -0.6, 0.9 and 1.2, respectively, with $p < 0.05$, Table S4]. Besides Rex and AbrB, 4 putative transcriptional regulators showed significant increases in their abundance levels in the $\Delta entD$ mutant ($\log_2 > 2$, $p < 0.05$). Among these are listed two regulators of the Ars family and one regulator of the Mar family, which control many cellular processes including oxidative stress response (Lebreton et al., 2012; Clair et al., 2013).

Predicted Secreted Protein

The cellular proteome contains proteins that are predicted to be extracellular proteins, such as flagellum components, degradation- and adhesion-related proteins and toxin-related proteins, as these are produced before being secreted. All of these proteins encompass signal peptides in their N-terminal primary structure and/or transmembrane helices. Proteins related to motility were significantly downregulated in the $\Delta entD$ mutant, while some of those related to degradation and adhesion appeared mostly to be upregulated (Table S4). These data suggested that EntD may be a regulator of virulence-associated extracellular proteins in *B. cereus*. To confirm this possibility, we performed a detailed analysis of the *B. cereus* exoproteome in the presence and absence of EntD.



Insights into the Exoproteome of the $\Delta entD$ Mutant

The regulation of exoprotein synthesis is typically growth phase dependent (Madeira et al., 2015). We thus examined the impact of $\Delta entD$ on the *B. cereus* exoproteome during early exponential growth phase (EE), late exponential growth phase (LE) and stationary phase (S) (Figure S3). The global dataset comprised 68,058 MS/MS spectra, from which 28,782 were assigned to peptide sequences (Table S5). A total of 210 proteins were identified based on the confident detection of at least two different peptides (Table S6). Changes in the abundance levels of proteins were analyzed according to their functional classification (Table S7). The data indicate that 82 proteins were differentially expressed in the $\Delta entD$ mutant compared with wild-type. The Venn diagrams presented in Figure 6 show the growth phase distribution of the 38 downregulated (Figure 6A) and 44 upregulated proteins (Figure 6B), respectively. Only 12 and 10 proteins were found to be down- or upregulated in all three growth stages, indicating that EntD modulates the *B. cereus* exoproteome mainly in a growth-phase dependent manner. Figures 6C,D show that motility- and toxin-related proteins are mainly downregulated during growth, while degradative enzymes and adhesins, transport and cell wall/cell surface-related proteins are mainly upregulated.

Focus on Motility

Both the cellular proteome and exoproteome showed lower accumulation of flagellum components in the $\Delta entD$ mutant compared with wild-type (Tables S4, S7). Accordingly, electron microscopy revealed that $\Delta entD$ cells were non-flagellated while the wild-type cells exhibited a peritrichous distribution of flagella (Figure 7A). The absence of flagellation observed in $\Delta entD$ cells prompted us to evaluate whether these cells displayed altered motility. Analysis of swimming motility was performed by measuring the diameters of growth haloes on TrB solidified

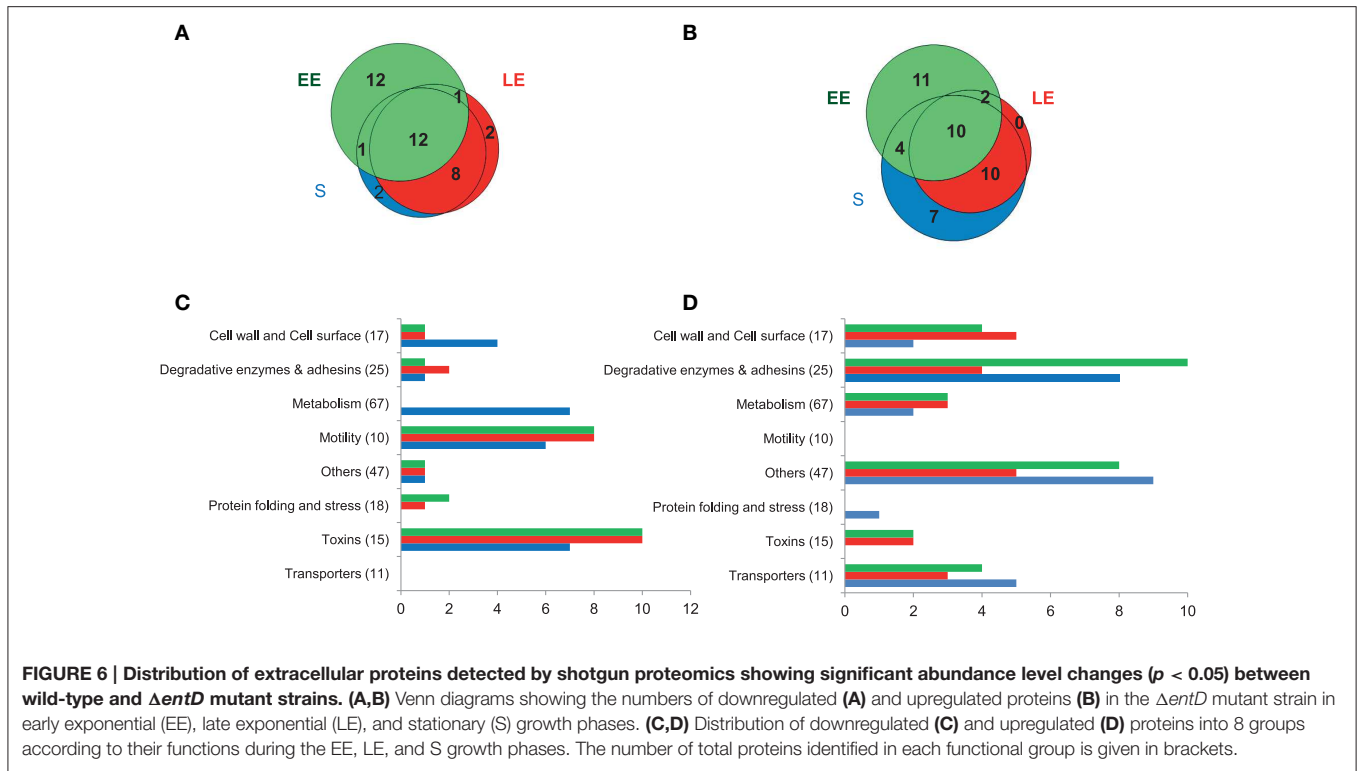
with 0.2% agar. As shown in Figure 7B, swimming was strongly reduced for $\Delta entD$ strain cells (23 ± 4 mm) when compared with the wild-type cells (83 ± 1 mm) after 14 days. Mutant cells were also inoculated on TrB solidified with 0.7% agar for swarming and under the same growth conditions except for a harder surface (2% agar) as a non-swarming control (Salvetti et al., 2011). Figure 7B indicated that $\Delta entD$ mutant cells exhibited higher mobility than wild-type cells on 0.7% agar TrB. Taken together, these results indicated that EntD deficiency alters *B. cereus* motility. Motility and biofilm formation are related differentiation processes in Gram-positive bacteria (Abee et al., 2011). We thus investigated the impact of the $\Delta entD$ mutation on the capacity of *B. cereus* to form a biofilm. Biofilm formation by the $\Delta entD$ mutant ($OD_{590} = 1.11 \pm 0.28$) was about two-fold higher than biofilm formation by the wild-type ($OD_{590} = 0.60 \pm 0.17$). Therefore, the $\Delta entD$ mutation appeared to have a positive role in biofilm formation.

Focus on Cell Wall-associated Enzymes and Degradative Enzymes

Exoproteome analysis confirmed the impact of EntD deficiency on the distribution pattern of cell wall-associated enzymes and showed that this impact is growth phase dependent (Figure 6, Table S7). EntD deficiency also impacted the abundance level of degradative enzymes in a growth phase-dependent manner. Only 4 proteins showed abundance level changes in the 3 growth phases: the InhA2 metalloprotease (BC_0666) and the phosphatidylinositol-specific phospholipase C enzyme (PlcA, BC_3761), which were more abundant in the $\Delta entD$ exoproteome than in the wild-type, and the collagenase ColC (BC_0556), which was less abundant. These proteins are recognized as virulence factors (Fedhila et al., 2002; Karunakaran and Biggs, 2011).

Focus on Toxin Production

EntB was not detected in the $\Delta entD$ culture filtrate (Table S6). In contrast, the abundance levels of EntA and EntC were significantly increased in the LE and S exoproteomes of $\Delta entD$ cells ($\log_2 > 0.8$, $p < 0.05$, Table S7). This suggests that the lack of EntD and EntB may be partially offset by EntA and EntC. Like EntB, none of the 3 Nhe components was detected in the $\Delta entD$ exoproteome (Table S6). The abundance levels of CytK and the 3 Hbl components were significantly decreased in the $\Delta entD$ exoproteome, especially during the LE and S growth phases ($\log_2 < -0.6$, $p < 0.05$, Table S7). RT-PCR experiments showed that the mRNA level of *nhe* was strongly decreased compared to *cytK* and *hbl* ($\log_2 = -16$ compared to -0.5 , $p < 0.05$) in the mutant strain compared with the wild-type strain. These results thus are in agreement with the proteomic data. Gastrointestinal (GI) toxicity of *B. cereus*, mainly caused by the cytotoxins Nhe, Hbl, and CytK, was evaluated on differentiated Caco-2 cells (mimicking the GI epithelium) using the MTT cell viability/metabolic assay (Hidalgo et al., 1989; Vidau et al., 2009). Figure 8 shows the cytotoxic effects of EE, LE, and S filtrate supernatants prepared from $\Delta entD$ and wild-type cells after 24 h contact with Caco-2 cells when incubated at $100 \mu\text{g}$ proteins. We noted that Caco-2 cells were more sensitive to wild-type



(more than 50% cell viability reduction with LE and S filtrate supernatants) than to $\Delta entD$ filtrate supernatant (less than 30% in all cases). We thus assume that EntD regulates the cytotoxic potential of *B. cereus* cells by modulating its exoproteome.

Discussion

Discovering virulence factors is important in understanding bacterial pathogenesis and their interactions with the host. Proteomics is today a popular tool to discover virulence factors in pathogenic bacteria and has the advantage of defining proteins that are differentially produced, and differentially located or secreted outside of the cell (i.e., to the media), namely the exoproteome (Armengaud et al., 2012). By identifying proteins that were missed during annotation, proteogenomics is also an important tool to discover new virulence factors (Armengaud, 2010; Renuse et al., 2011). A proteogenomic study allowed us to identify EntD, which shares common domains with the previously identified exoproteins EntA, EntB, and EntC (Clair et al., 2010). Nothing is known about the function of EntD. Therefore, we made a knockout mutant and performed a comparative proteomic analysis using high-throughput nanoLC-MS/MS with a high-resolution Orbitrap mass spectrometer.

The abundance level of a large number of proteins involved in central metabolism was significantly altered in the $\Delta entD$ mutant. This leads to catabolic readjustments and a lower growth rate in nutrient-limited conditions. The differences in catabolic activities might reflect a higher anabolic, and thus energy, requirement in the $\Delta entD$ mutant (Koebmann et al., 2002). Dysregulation of central metabolism could affect the

NADH/NAD⁺ ratio in the cell, which is likely to perturb the oxidative stress response. This was corroborated by significant level changes of oxidative stress related proteins and the highest sensitivity of $\Delta entD$ cells toward external antioxidants. However, we cannot exclude a direct link between the increased sensitivity of the $\Delta entD$ mutant to external oxidant and the modification of the cell wall structure.

EntD deficiency decreased the production of flagellum components and altered the distribution of cell wall-associated proteins. As a result, $\Delta entD$ mutant cells were non-flagellated and showed a higher capacity to stick their cell walls together. This could facilitate colony expansion during sliding motility on solid surfaces (0.7% agar plates). Indeed, unlike swarming, sliding motility does not require flagella (Henrichsen, 1972; van Gestel et al., 2015). Flagellum-dependent motility is important for biofilm formation at the air-liquid interface in microtiter plates (Houry et al., 2010). However, the $\Delta entD$ mutant showed a higher capacity to form a biofilm than the wild-type. We observed that the $\Delta entD$ mutant had a decreased sedimentation rate compared to its parental strain (data not shown). This could explain why $\Delta entD$ cells produce more biofilm than wild-type cells in static conditions. In conclusion, EntD plays a role in both motility and biofilm formation by regulating (i) the anchor of flagella at the cell surface throughout its synthesis, and (ii) the composition of the cell wall, as deciphered by proteomics.

EntD deficiency altered the abundance level of a range of extracellular *B. cereus* virulence factors including the PlcR-regulated Hbl, Nhe, and CytK enterotoxins (Gohar et al., 2008; Stenfors Arnesen et al., 2008). These enterotoxins are downregulated in $\Delta entD$ mutant supernatant, while the

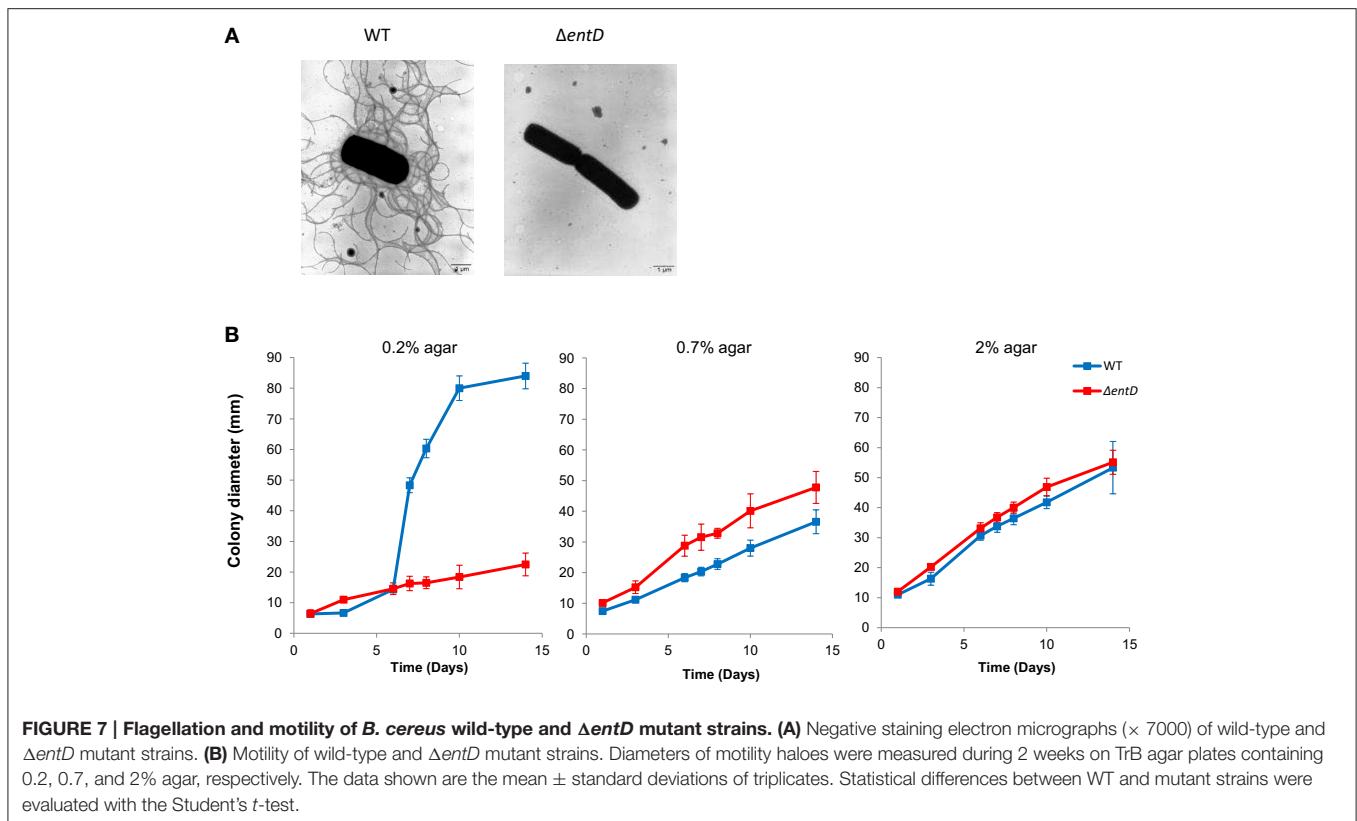


FIGURE 7 | Flagellation and motility of *B. cereus* wild-type and $\Delta entD$ mutant strains. (A) Negative staining electron micrographs ($\times 7000$) of wild-type and $\Delta entD$ mutant strains. **(B)** Motility of wild-type and $\Delta entD$ mutant strains. Diameters of motility haloes were measured during 2 weeks on TrB agar plates containing 0.2, 0.7, and 2% agar, respectively. The data shown are the mean \pm standard deviations of triplicates. Statistical differences between WT and mutant strains were evaluated with the Student's *t*-test.

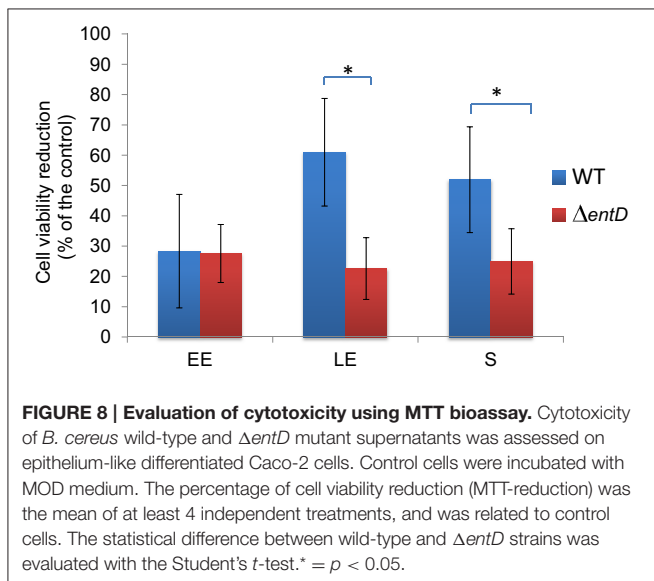


FIGURE 8 | Evaluation of cytotoxicity using MTT bioassay. Cytotoxicity of *B. cereus* wild-type and $\Delta entD$ mutant supernatants was assessed on epithelium-like differentiated Caco-2 cells. Control cells were incubated with MOD medium. The percentage of cell viability reduction (MTT-reduction) was the mean of at least 4 independent treatments, and was related to control cells. The statistical difference between wild-type and $\Delta entD$ strains was evaluated with the Student's *t*-test. * = $p < 0.05$.

abundance level of their specific regulator, PlcR, was unchanged. Specifically, Nhe was undetected in both the cellular and extracellular proteomes of the $\Delta entD$ mutant whatever the growth phase, while the Hbl abundance level was significantly decreased at the end of growth. Hbl is the major contributor to *B. cereus* cytotoxicity toward Caco-2 cells (Koehler, 2002). Our experiments showed that EntD deficiency decreased the cytotoxic activity of *B. cereus* supernatant toward Caco-2 cells

only when harvested at the end of growth. This indicates that the cytotoxicity defect of the $\Delta entD$ mutant is mainly due to the abundance level decrease of Hbl in the *B. cereus* exoproteome.

Cellular proteome analysis showed that *entD* disruption affected the abundance level of several global transcriptional regulators. In addition, exoproteome analysis showed a growth phase-associated regulation of exoproteins in the *entD* mutant. Taken together these data indicate that some of the differences associated with the *entD* mutation are likely to be due to perturbation of other regulatory circuits. For example, proteins associated with glucose catabolism, oxidative stress, motility, and toxinogenesis are known to be regulated by transition state regulator AbrB-, NADH/NAD⁺-sensing regulator Rex-, and redox-sensing regulator ResD-dependent regulatory circuits (Hamon et al., 2004; Dupont et al., 2006; Laouami et al., 2014; Lozano Goné et al., 2014). Control of motility and biofilm formation may also be dependent on abundance level changes of the putative transcriptional regulator, BC_5278, which belong to the EPS-related genome region, and the RNA chaperone Hfq (BC_3716) (Möller et al., 2014; Panda et al., 2015).

Finally, our data showed that EntD coordinates multiple cellular responses in *B. cereus* cells and modulates global regulatory circuits. This raises the question of the original native function of EntD. In wild-type cells, EntD was detected exclusively in the *B. cereus* exoproteome, according to the presence of an N-terminal secretion signal. EntD contains a positively charged 3D domain together with SH3 domains known to be involved in protein-protein interactions (Schneewind

et al., 1995; Marino et al., 2002). Once translocated across the cell wall, EntD may thus remain associated with the cell wall and assemble into macromolecular structures on the cell surface. Among the possible interacting partners of EntD are its homologs EntA, EntB, and EntC (Clair et al., 2010), which showed a strongly modified distribution pattern in $\Delta entD$ cells. Our experimental data revealed that EntD deficiency alters the morphology and properties of the *B. cereus* cell wall. We thus propose that EntD is a protein that plays a crucial role in maintaining cell wall structure. Because cell wall structural integrity is essential for survival, we suggest that the lack of EntD leads to the activation of a cellular response that allows *B. cereus* to adapt and survive. This adaptive response may be mediated by a cell wall integrity (CWI)-like pathway (Jendretzki et al., 2011). Nucleoside diphosphate kinase (Ndk) may act as a key intracellular component of this CWI pathway (Chakrabarty, 1998; Kim et al., 2014). The cellular response is the activation of a transcriptional adaptation program related to cell wall remodeling, metabolism, and virulence involving the regulators ResD (which interacts with Ndk in two-hybrid assays, unpublished data), Rex and AbrB. The final consequence of this EntD-dependent response is the modulation of growth at the benefit of the reorganization of the *B. cereus* surface (with special focus on cell surface-associated proteins) for biologically important processes, such as sliding motility and the establishment of biofilms (Garg et al., 2015).

References

- Abee, T., Kovács, A. T., Kuipers, O. P., and Van Der Veen, S. (2011). Biofilm formation and dispersal in Gram-positive bacteria. *Curr. Opin. Biotechnol.* 22, 172–179. doi: 10.1016/j.copbio.2010.10.016
- Anantharaman, V., Iyer, L. M., and Aravind, L. (2012). Ter-dependent stress response systems: novel pathways related to metal sensing, production of a nucleoside-like metabolite, and DNA-processing. *Mol. Biosyst.* 8, 3142–3165. doi: 10.1039/c2mb25239b
- Andreeva, Z. I., Nesterenko, V. F., Yurkov, I. S., Budarina, Z. I., Sineva, E. V., and Solonin, A. S. (2006). Purification and cytotoxic properties of *Bacillus cereus* hemolysin II. *Protein Expr. Purif.* 47, 186–193. doi: 10.1016/j.pep.2005.10.030
- Arantes, O., and Lereclus, D. (1991). Construction of cloning vectors for *Bacillus thuringiensis*. *Gene* 108, 115–119. doi: 10.1016/0378-1119(91)90495-W
- Armengaud, J. (2010). Proteogenomics and systems biology: quest for the ultimate missing parts. *Expert Rev. Proteomics* 7, 65–77. doi: 10.1586/epr.09.104
- Armengaud, J., Christie-Oleza, J. A., Clair, G., Malard, V., and Dupont, C. (2012). Exoproteomics: exploring the world around biological systems. *Expert Rev. Proteomics* 9, 561–575. doi: 10.1586/epr.12.52
- Arnaud, M., Chastanet, A., and Débarbouillé, M. (2004). New vector for efficient allelic replacement in naturally nontransformable, low-GC-content, Gram-positive bacteria. *Appl. Environ. Microbiol.* 70, 6887–6891. doi: 10.1128/AEM.70.11.6887-6891.2004
- Beecher, D. J., Schoeni, J. L., and Wong, A. C. (1995). Enterotoxigenic activity of hemolysin BL from *Bacillus cereus*. *Infect. Immun.* 63, 4423–4428.
- Bottone, E. J. (2010). *Bacillus cereus*, a volatile human pathogen. *Clin. Microbiol. Rev.* 23, 382–398. doi: 10.1128/CMR.00073-09
- Brillard, J., Jéhanno, I., Dargaignaratz, C., Barbosa, I., Ginies, C., Carlin, F., et al. (2010). Identification of *Bacillus cereus* genes specifically expressed during growth at low temperatures. *Appl. Environ. Microbiol.* 76, 2562–2573. doi: 10.1128/AEM.02348-09
- Brynildsen, M. P., Winkler, J. A., Spina, C. S., Macdonald, I. C., and Collins, J. J. (2013). Potentiating antibacterial activity by predictably enhancing endogenous microbial ROS production. *Nat. Biotechnol.* 31, 160–165. doi: 10.1038/nbt.2458
- In summary, this study shows that *B. cereus* has developed a complex regulatory network that links cell wall structure, cell growth, motility, and enterotoxin production, and coordinates surface-associated proteins. Besides EntD, this network may involve EntA, EntB, and EntC. These proteins in *B. cereus* are nearly identical to those in the very closely related pathogen *Bacillus anthracis*. *B. anthracis* is non-motile, and does not readily form biofilms and enterotoxins. However, it produces several virulence factors, also found in *B. cereus* (Pflughoeft et al., 2014). The Ent A, B, C, and D proteins may thus provide attractive targets to study both *B. cereus* and *B. anthracis* pathogenesis.

Acknowledgments

We thank I. Bornard for microscopy analyses and V. Jouffrey for technical input in bioinformatics analyses. We thank L. Belzunces for insightful discussions on Caco-2 cell experiments. This work was supported in part by an SFR Tersys grant from the University of Avignon.

Supplementary Material

The Supplementary Material for this article can be found online at: <http://journal.frontiersin.org/article/10.3389/fmicb.2015.01004>

- Callegan, M. C., Gilmore, M. S., Gregory, M., Ramadan, R. T., Wiskur, B. J., Moyer, A. L., et al. (2007). Bacterial endophthalmitis: therapeutic challenges and host-pathogen interactions. *Prog. Retin. Eye Res.* 26, 189–203. doi: 10.1016/j.preteyeres.2006.12.001
- Callegan, M. C., Kane, S. T., Cochran, D. C., Novosad, B., Gilmore, M. S., Gominet, M., et al. (2005). *Bacillus* endophthalmitis: roles of bacterial toxins and motility during infection. *Invest. Ophthalmol. Vis. Sci.* 46, 3233–3238. doi: 10.1167/iovs.05-0410
- Carvalho, P. C., Fischer, J. S., Chen, E. I., Yates, J. R. III, and Barbosa, V. C. (2008). PatternLab for proteomics: a tool for differential shotgun proteomics. *BMC Bioinformatics* 9:316. doi: 10.1186/1471-2105-9-316
- Chakrabarty, A. M. (1998). Nucleoside diphosphate kinase: role in bacterial growth, virulence, cell signalling and polysaccharide synthesis. *Mol. Microbiol.* 28, 875–882. doi: 10.1046/j.1365-2958.1998.00846.x
- Clair, G., Armengaud, J., and Dupont, C. (2012). Restricting fermentative potential by proteome remodeling: an adaptive strategy evidenced in *Bacillus cereus*. *Mol. Cell. Proteomics* 11:M111 013102. doi: 10.1074/mcp.M111.013102
- Clair, G., Lorphelin, A., Armengaud, J., and Dupont, C. (2013). OhrRA functions as a redox-responsive system controlling toxinogenesis in *Bacillus cereus*. *J. Proteomics* 94, 527–539. doi: 10.1016/j.jprot.2013.10.024
- Clair, G., Roussi, S., Armengaud, J., and Dupont, C. (2010). Expanding the known repertoire of virulence factors produced by *Bacillus cereus* through early secretome profiling in three redox conditions. *Mol. Cell. Proteomics* 9, 1486–1498. doi: 10.1074/mcp.M000027-MCP201
- Drobniewski, F. A. (1993). *Bacillus cereus* and related species. *Clin. Microbiol. Rev.* 6, 324–338.
- Dupierris, V., Masselon, C., Court, M., Kieffer-Jaquinod, S., and Bruley, C. (2009). A toolbox for validation of mass spectrometry peptides identification and generation of database: IRMa. *Bioinformatics* 25, 1980–1981. doi: 10.1093/bioinformatics/btp301
- Dupont, C., Zigha, A., Rosenfeld, E., and Schmitt, P. (2006). Control of enterotoxin gene expression in *Bacillus cereus* F4430/73 involves the redox-sensitive ResDE signal transduction system. *J. Bacteriol.* 188, 6640–6651. doi: 10.1128/JB.00702-06

- Esbelin, J., Armengaud, J., Zigha, A., and Duport, C. (2009). ResDE-dependent regulation of enterotoxin gene expression in *Bacillus cereus*: evidence for multiple modes of binding for ResD and interaction with Fnr. *J. Bacteriol.* 191, 4419–4426. doi: 10.1128/JB.00321-09
- Esbelin, J., Jouanneau, Y., Armengaud, J., and Duport, C. (2008). ApoFnr binds as a monomer to promoters regulating the expression of enterotoxin genes of *Bacillus cereus*. *J. Bacteriol.* 190, 4242–4251. doi: 10.1128/JB.00336-08
- Fedhila, S., Nel, P., and Lereclus, D. (2002). The InhA2 metalloprotease of *Bacillus thuringiensis* strain 407 is required for pathogenicity in insects infected via the oral route. *J. Bacteriol.* 184, 3296–3304. doi: 10.1128/JB.184.12.3296-3304.2002
- Finlay, B. B., and Falkow, S. (1997). Common themes in microbial pathogenicity revisited. *Microbiol. Mol. Biol. Rev.* 61, 136–169.
- Flemming, H. C., and Wingender, J. (2010). The biofilm matrix. *Nat. Rev. Microbiol.* 8, 623–633. doi: 10.1038/nrmicro2415
- Garg, R., Tripathi, D., Kant, S., Chandra, H., Bhatnagar, R., and Banerjee, N. (2015). The conserved hypothetical protein Rv0574c is required for cell wall integrity, stress tolerance, and virulence of *Mycobacterium tuberculosis*. *Infect. Immun.* 83, 120–129. doi: 10.1128/IAI.02274-14
- Ghelardi, E., Celandroni, F., Salvetti, S., Ceragioli, M., Beecher, D. J., Senesi, S., et al. (2007). Swarming behavior of and hemolysin BL secretion by *Bacillus cereus*. *Appl. Environ. Microbiol.* 73, 4089–4093. doi: 10.1128/AEM.02345-06
- Goel, A. K. (2015). Anthrax: a disease of biowarfare and public health importance. *World J. Clin. Cases* 3, 20–33. doi: 10.12998/wjcc.v3.i1.20
- Gohar, M., Faegri, K., Perchat, S., Ravnun, S., Økstad, O. A., Gominet, M., et al. (2008). The PlcR virulence regulon of *Bacillus cereus*. *PLoS ONE* 3:e2793. doi: 10.1371/journal.pone.0002793
- Guinebretière, M. H., Velge, P., Couvert, O., Carlin, F., Debuysse, M. L., and Nguyen-The, C. (2010). Ability of *Bacillus cereus* group strains to cause food poisoning varies according to phylogenetic affiliation (groups I to VII) rather than species affiliation. *J. Clin. Microbiol.* 48, 3388–3391. doi: 10.1128/JCM.00921-10
- Guttenplan, S. B., Shaw, S., and Kearns, D. B. (2013). The cell biology of peritrichous flagella in *Bacillus subtilis*. *Mol. Microbiol.* 87, 211–229. doi: 10.1111/mmi.12103
- Hamon, M. A., Stanley, N. R., Britton, R. A., Grossman, A. D., and Lazizzera, B. A. (2004). Identification of AbrB-regulated genes involved in biofilm formation by *Bacillus subtilis*. *Mol. Microbiol.* 52, 847–860. doi: 10.1111/j.1365-2958.2004.04023.x
- Hartmann, E. M., Allain, F., Gaillard, J. C., Pible, O., and Armengaud, J. (2014). Taking the shortcut for high-throughput shotgun proteomic analysis of bacteria. *Methods Mol. Biol.* 1197, 275–285. doi: 10.1007/978-1-4939-1261-2_16
- Hartmann, E. M., and Armengaud, J. (2014). N-terminomics and proteogenomics, getting off to a good start. *Proteomics* 14, 2637–2646. doi: 10.1002/pmic.201400157
- Henrichsen, J. (1972). Bacterial surface translocation: a survey and a classification. *Bacteriol. Rev.* 36, 478–503.
- Hidalgo, I. J., Raub, T. J., and Borchardt, R. T. (1989). Characterization of the human colon carcinoma cell line (Caco-2) as a model system for intestinal epithelial permeability. *Gastroenterology* 96, 736–749.
- Houry, A., Briandet, R., Aymerich, S., and Gohar, M. (2010). Involvement of motility and flagella in *Bacillus cereus* biofilm formation. *Microbiology* 156, 1009–1018. doi: 10.1099/mic.0.034827-0
- Hsueh, Y. H., Somers, E. B., Lereclus, D., and Wong, A. C. (2006). Biofilm formation by *Bacillus cereus* is influenced by PlcR, a pleiotropic regulator. *Appl. Environ. Microbiol.* 72, 5089–5092. doi: 10.1128/AEM.00573-06
- Hwang, S., Li, Z., Bar-Peled, Y., Aronov, A., Ericson, J., and Bar-Peled, M. (2014). The biosynthesis of UDP-d-FucNAc-4N-(2)-oxoglutarate (UDP-Yelosamine) in *Bacillus cereus* ATCC 14579: Pat and Pyl, an aminotransferase and an ATP-dependent Grasp protein that ligates 2-oxoglutarate to UDP-4-amino-sugars. *J. Biol. Chem.* 289, 35620–35632. doi: 10.1074/jbc.M114.614917
- Ivanova, N., Sorokin, A., Anderson, I., Galleron, N., Candelon, B., Kaprat, V., et al. (2003). Genome sequence of *Bacillus cereus* and comparative analysis with *Bacillus anthracis*. *Nature* 423, 87–91. doi: 10.1038/nature01582
- Jendretzki, A., Wittland, J., Wilk, S., Straede, A., and Heinisch, J. J. (2011). How do I begin? Sensing extracellular stress to maintain yeast cell wall integrity. *Eur. J. Cell Biol.* 90, 740–744. doi: 10.1016/j.ejcb.2011.04.006
- Karunakaran, E., and Biggs, C. A. (2011). Mechanisms of *Bacillus cereus* biofilm formation: an investigation of the physicochemical characteristics of cell surfaces and extracellular proteins. *Appl. Microbiol. Biotechnol.* 89, 1161–1175. doi: 10.1007/s00253-010-2919-2
- Kim, Y. J., Lee, J. H., Lee, Y., Jia, J., Paek, S. H., Kim, H. B., et al. (2014). Nucleoside diphosphate kinase and flagellin from *Pseudomonas aeruginosa* induce interleukin 1 expression via the Akt/NF-kappaB signaling pathways. *Infect. Immun.* 82, 3252–3260. doi: 10.1128/IAI.02007-14
- Koebmann, B. J., Westerhoff, H. V., Snoep, J. L., Nilsson, D., and Jensen, P. R. (2002). The glycolytic flux in *Escherichia coli* is controlled by the demand for ATP. *J. Bacteriol.* 184, 3909–3916. doi: 10.1128/JB.184.14.3909-3916.2002
- Koehler, T. M. (2002). *Bacillus anthracis* genetics and virulence gene regulation. *Curr. Top. Microbiol. Immunol.* 271, 143–164. doi: 10.1007/978-3-662-05767-4_7
- Kotiranta, A., Lounatmaa, K., and Haapasalo, M. (2000). Epidemiology and pathogenesis of *Bacillus cereus* infections. *Microbes Infect.* 2, 189–198. doi: 10.1016/S1286-4579(00)00269-0
- Laouami, S., Clair, G., Armengaud, J., and Duport, C. (2014). Proteomic evidences for rex regulation of metabolism in toxin-producing *Bacillus cereus* ATCC 14579. *PLoS ONE* 9:e107354. doi: 10.1371/journal.pone.0107354
- Laouami, S., Messaoudi, K., Alberto, F., Clavel, T., and Duport, C. (2011). Lactate dehydrogenase A promotes communication between carbohydrate catabolism and virulence in *Bacillus cereus*. *J. Bacteriol.* 193, 1757–1766. doi: 10.1128/JB.00024-11
- Lebreton, F., Van Schaik, W., Sanguinetti, M., Posteraro, B., Torelli, R., Le Bras, F., et al. (2012). AsrR is an oxidative stress sensing regulator modulating *Enterococcus faecium* opportunistic traits, antimicrobial resistance, and pathogenicity. *PLoS Pathog.* 8:e1002834. doi: 10.1371/journal.ppat.1002834
- Leelakriangsak, M., Huyen, N. T., Töwe, S., van Duy, N., Becher, D., Hecker, M., et al. (2008). Regulation of quinone detoxification by the thiol stress sensing DUF24/MarR-like repressor, YodB in *Bacillus subtilis*. *Mol. Microbiol.* 67, 1108–1124. doi: 10.1111/j.1365-2958.2008.06110.x
- Lindbäck, T., Mols, M., Basset, C., Granum, P. E., Kuipers, O. P., and Kovács, Á. T. (2012). CodY, a pleiotropic regulator, influences multicellular behaviour and efficient production of virulence factors in *Bacillus cereus*. *Environ. Microbiol.* 14, 2233–2246. doi: 10.1111/j.1462-2920.2012.02766.x
- Lozano Gone, A. M., Dinorín Tellez Girón, J., Jiménez Montejo, F. E., Hidalgo-Lara, M. E., and López, Y. L. V. E. (2014). Behavior of transition state regulator AbrB in batch cultures of *Bacillus thuringiensis*. *Curr. Microbiol.* 69, 725–732. doi: 10.1007/s00284-014-0650-4
- Lucking, G., Dommel, M. K., Scherer, S., Fouet, A., and Ehling-Schulz, M. (2009). Cereulide synthesis in emetic *Bacillus cereus* is controlled by the transition state regulator AbrB, but not by the virulence regulator PlcR. *Microbiology* 155, 922–931. doi: 10.1099/mic.0.024125-0
- Madeira, J. P., Alpha-Bazin, B., Armengaud, J., and Duport, C. (2015). Time dynamics of the *Bacillus cereus* exoproteome are shaped by cellular oxidation. *Front. Microbiol.* 6:342. doi: 10.3389/fmicb.2015.00342
- Marino, M., Banerjee, M., Jonquières, R., Cossart, P., and Ghosh, P. (2002). GW domains of the *Listeria monocytogenes* invasion protein InlB are SH3-like and mediate binding to host ligands. *EMBO J.* 21, 5623–5634. doi: 10.1093/emboj/cdf558
- Messaoudi, K., Clavel, T., Schmitt, P., and Duport, C. (2010). Fnr mediates carbohydrate-dependent regulation of catabolic and enterotoxin genes in *Bacillus cereus* F4430/73. *Res. Microbiol.* 161, 30–39. doi: 10.1016/j.resmic.2009.11.003
- Möller, P., Overloper, A., Förstner, K. U., Wen, T. N., Sharma, C. M., Lai, E. M., et al. (2014). Profound impact of Hfq on nutrient acquisition, metabolism and motility in the plant pathogen *Agrobacterium tumefaciens*. *PLoS ONE* 9:e110427. doi: 10.1371/journal.pone.0110427
- Mori, S., Yamasaki, M., Maruyama, Y., Momma, K., Kawai, S., Hashimoto, W., et al. (2004). Crystallographic studies of *Mycobacterium tuberculosis* polyphosphate/ATP-NAD kinase complexed with NAD. *J. Biosci. Bioeng.* 98, 391–393. doi: 10.1016/S1389-1723(04)00302-0
- Murphy, E. (1985). Nucleotide sequence of a spectinomycin adenylyltransferase AAD(9) determinant from *Staphylococcus aureus* and its relationship to AAD(3⁺) (9). *Mol. Gen. Genet.* 200, 33–39. doi: 10.1007/BF00383309

- Panda, G., Tanwer, P., Ansari, S., Khare, D., and Bhatnagar, R. (2015). Regulation and RNA-binding properties of Hfq-like RNA chaperones in *Bacillus anthracis*. *Biochim. Biophys. Acta* 1850, 1661–1668. doi: 10.1016/j.bbagen.2015.03.016
- Pandiani, F., Brillard, J., Bornard, I., Michaud, C., Chamot, S., Nguyen-The, C., et al. (2010). Differential involvement of the five RNA helicases in adaptation of *Bacillus cereus* ATCC 14579 to low growth temperatures. *Appl. Environ. Microbiol.* 76, 6692–6697. doi: 10.1128/AEM.00782-10
- Pardo-López, L., Soberón, M., and Bravo, A. (2013). *Bacillus thuringiensis* insecticidal three-domain Cry toxins: mode of action, insect resistance and consequences for crop protection. *FEMS Microbiol. Rev.* 37, 3–22. doi: 10.1111/j.1574-6976.2012.00341.x
- Parkunan, S. M., Astley, R., and Callegan, M. C. (2014). Role of TLR5 and flagella in *Bacillus* intraocular infection. *PLoS ONE* 9:e100543. doi: 10.1371/journal.pone.0100543
- Pflughoeft, K. J., Swick, M. C., Engler, D. A., Yeo, H. J., and Koehler, T. M. (2014). Modulation of the *Bacillus anthracis* secretome by the immune inhibitor A1 protease. *J. Bacteriol.* 196, 424–435. doi: 10.1128/JB.00690-13
- Raddadi, N., Cherif, A., Mora, D., Brusetti, L., Borin, S., Boudabous, A., et al. (2005). The autolytic phenotype of the *Bacillus cereus* group. *J. Appl. Microbiol.* 99, 1070–1081. doi: 10.1111/j.1365-2672.2005.02713.x
- Ramarao, N., and Lereclus, D. (2005). The InhA1 metalloprotease allows spores of the *B. cereus* group to escape macrophages. *Cell Microbiol.* 7, 1357–1364. doi: 10.1111/j.1462-5822.2005.00562.x
- Ramarao, N., and Sanchis, V. (2013). The pore-forming haemolysins of *Bacillus cereus*: a review. *Toxins (Basel)* 5, 1119–1139. doi: 10.3390/toxins5061119
- Renuse, S., Chaerkady, R., and Pandey, A. (2011). Proteogenomics. *Proteomics* 11, 620–630. doi: 10.1002/pmic.201000615
- Rosenfeld, E., Dupont, C., Zigha, A., and Schmitt, P. (2005). Characterization of aerobic and anaerobic vegetative growth of the food-borne pathogen *Bacillus cereus* F4430/73 strain. *Can. J. Microbiol.* 51, 149–158. doi: 10.1139/w04-132
- Salveti, S., Faegri, K., Ghelardi, E., Kolstø, A. B., and Senesi, S. (2011). Global gene expression profile for swarming *Bacillus cereus* bacteria. *Appl. Environ. Microbiol.* 77, 5149–5156. doi: 10.1128/AEM.00245-11
- Salveti, S., Ghelardi, E., Celandroni, F., Ceragioli, M., Giannessi, F., and Senesi, S. (2007). FlhF, a signal recognition particle-like GTPase, is involved in the regulation of flagellar arrangement, motility behaviour and protein secretion in *Bacillus cereus*. *Microbiology* 153, 2541–2552. doi: 10.1099/mic.0.2006/005553-0
- Schneewind, O., Fowler, A., and Faull, K. F. (1995). Structure of the cell wall anchor of surface proteins in *Staphylococcus aureus*. *Science* 268, 103–106. doi: 10.1126/science.7701329
- Senesi, S., Salvetti, S., Celandroni, F., and Ghelardi, E. (2010). Features of *Bacillus cereus* swarm cells. *Res. Microbiol.* 161, 743–749. doi: 10.1016/j.resmic.2010.10.007
- Sprynski, N., Felix, C., O'Callaghan, D., and Vergunst, A. C. (2012). Restoring virulence to mutants lacking subunits of multiprotein machines: functional complementation of a *Brucella virB5* mutant. *FEBS Open Bio* 2, 71–75. doi: 10.1016/j.fob.2012.03.003
- Stenfors Arnesen, L. P., Fagerlund, A., and Granum, P. E. (2008). From soil to gut: *Bacillus cereus* and its food poisoning toxins. *FEMS Microbiol. Rev.* 32, 579–606. doi: 10.1111/j.1574-6976.2008.00112.x
- Taylor, B. L., and Zhulin, I. B. (1999). PAS domains: internal sensors of oxygen, redox potential, and light. *Microbiol. Mol. Biol. Rev.* 63, 479–506.
- van Gestel, J., Vlamakis, H., and Kolter, R. (2015). From cell differentiation to cell collectives: *Bacillus subtilis* uses division of labor to migrate. *PLoS Biol.* 13:e1002141. doi: 10.1371/journal.pbio.1002141
- Vidau, C., Brunet, J. L., Badiou, A., and Belzunces, L. P. (2009). Phenylpyrazole insecticides induce cytotoxicity by altering mechanisms involved in cellular energy supply in the human epithelial cell model Caco-2. *Toxicol. In Vitro* 23, 589–597. doi: 10.1016/j.tiv.2009.01.017
- Wilson, J. W., Schurr, M. J., Leblanc, C. L., Ramamurthy, R., Buchanan, K. L., and Nickerson, C. A. (2002). Mechanisms of bacterial pathogenicity. *Postgrad. Med. J.* 78, 216–224. doi: 10.1136/pmj.78.918.216
- Zigha, A., Rosenfeld, E., Schmitt, P., and Dupont, C. (2007). The redox regulator Fnr is required for fermentative growth and enterotoxin synthesis in *Bacillus cereus* F4430/73. *J. Bacteriol.* 189, 2813–2824. doi: 10.1128/JB.01701-06
- Zwietering, M. H., Rombouts, F. M., and Van't Riet, K. (1992). Comparison of definitions of the lag phase and the exponential phase in bacterial growth. *J. Appl. Bacteriol.* 72, 139–145. doi: 10.1111/j.1365-2672.1992.tb01815.x
- Zwietering, M., Jongenburger, I., Rombouts, F., and Van't Riet, K. (1990). Modeling of the bacterial growth curve. *Appl. Environ. Microbiol.* 56, 1875–1881.

Conflict of Interest Statement: The authors declare that the research was conducted in the absence of any commercial or financial relationships that could be construed as a potential conflict of interest.

Copyright © 2015 Omer, Alpha-Bazin, Brunet, Armengaud and Dupont. This is an open-access article distributed under the terms of the Creative Commons Attribution License (CC BY). The use, distribution or reproduction in other forums is permitted, provided the original author(s) or licensor are credited and that the original publication in this journal is cited, in accordance with accepted academic practice. No use, distribution or reproduction is permitted which does not comply with these terms.