



# Immunity to *Francisella*

Siobhán C. Cowley\* and Karen L. Elkins

Center for Biologics Evaluation and Research, U.S. Food and Drug Administration, Bethesda, MD, USA

**Edited by:**

Anders Sjöstedt,  
Umeå University, Sweden

**Reviewed by:**

Dennis Metzger,  
Albany Medical College, USA  
Shabaana Khader,  
University of Pittsburgh, USA

**\*Correspondence:**

Siobhán C. Cowley, Laboratory of  
Mycobacterial Diseases and Cellular  
Immunology, Division of Bacterial,  
Parasitic and Allergenic Products/  
Office of Vaccines Research and  
Review/Center for Biologics Evaluation  
and Research, U.S. Food and Drug  
Administration, HFM-431, 29 Lincoln  
Drive, Room 516, Bethesda, MD  
20892, USA.  
e-mail: siobhan.cowley@fda.hhs.gov

In recent years, studies on the intracellular pathogen *Francisella tularensis* have greatly intensified, generating a wealth of new information on the interaction of this organism with the immune system. Here we review the basic elements of the innate and adaptive immune responses that contribute to protective immunity against *Francisella* species, with special emphasis on new data that has emerged in the last 5 years. Most studies have utilized the mouse model of infection, although there has been an expansion of work on human cells and other new animal models. In mice, basic immune parameters that operate in defense against other intracellular pathogen infections, such as interferon gamma, TNF- $\alpha$ , and reactive nitrogen intermediates, are central for control of *Francisella* infection. However, new important immune mediators have been revealed, including IL-17A, Toll-like receptor 2, and the inflammasome. Further, a variety of cell types in addition to macrophages are now recognized to support *Francisella* growth, including epithelial cells and dendritic cells. CD4<sup>+</sup> and CD8<sup>+</sup>T cells are clearly important for control of primary infection and vaccine-induced protection, but new T cell subpopulations and the mechanisms employed by T cells are only beginning to be defined. A significant role for B cells and specific antibodies has been established, although their contribution varies greatly between bacterial strains of lower and higher virulence. Overall, recent data profile a pathogen that is adept at subverting host immune responses, but susceptible to many elements of the immune system's antimicrobial arsenal.

**Keywords:** *Francisella*, immunity, innate, adaptive, lymphocyte, cytokine

## INTRODUCTION AND OVERVIEW

Although *Francisella tularensis* is highly infectious and readily establishes disease at low doses in both humans and animals, it has long been recognized that human tularemia victims rarely if ever suffer a second episode of disease. The collective human infection experience therefore strongly suggests that natural infection engenders strong immune responses that are usually protective. The older literature contains a wealth of information on the pathogenesis and host response to *Francisella* drawn from studies in both humans and animals, including vaccination and challenge studies in humans that would be difficult if not impossible to replicate today. These studies have been recently reviewed extensively elsewhere (Conlan and Oyston, 2007; Elkins et al., 2007). But the history of studies on *Francisella* includes its development as a biowarfare pathogen (Dennis et al., 2001); as a result, the recent heightened interest in biodefense has produced a flood of new and exciting data, particularly on respiratory infection and mucosal immune responses to this pathogen. The upsurge in studies is impressive: from 1900 to 2005, a search of PubMed for "Tularemia or *Francisella*" yielded a total of 2921 references, but 858 citations from 2006 to 2011. Thus this review will focus primarily on developments in about the last 5 years.

## HUMAN *IN VIVO* IMMUNE RESPONSES TO *FRANCISELLA* INFECTION AND VACCINATION

### IMPORTANT COMPONENTS OF HUMAN IMMUNE RESPONSES REVEALED BY *FRANCISELLA* INFECTION

The most recent studies of the epidemiology of infection with *F. tularensis* subsp. *tularensis*, as well as subsp. *holarctica*, clearly indicate differences in virulence among clades of Type A *F. tularensis*

subsp. *tularensis*. These are now denoted A1a, A1b, and A2, in addition to Type B *F. tularensis* subsp. *holarctica* (Kugeler et al., 2009). Type A1 infections of humans tend to have a fulminant course with a high mortality rate, while Type A2 and Type B infections are rarely if ever lethal in humans (Staples et al., 2006; Kugeler et al., 2008). In studies in the U.S., differences in the attack rates of immunocompromised people for the various clades and subspecies have been described; 11 of 108 (10%) of Type B infections, 6 of 133 (6%) of A1 infections (both subtypes), and none of 68 A2 infections were diagnosed in people with an underlying immunocompromising condition, including medical conditions as diverse as end stage renal disease (Staples et al., 2006) and chronic granulomatous disease (CGD; Maranan et al., 1997). Nonetheless, the collective evidence suggests that the differences in virulence are largely due to intrinsic properties of the bacterial strains, and not directly related to host gender, susceptibility, genetics, or otherwise failed immune responses (Kugeler et al., 2009).

Because infection with *Francisella* is relatively infrequent in nature, informative examples of infection of people with primary or acquired immunodeficiencies subjects are rare. The handful of such cases prior to 2006, including infection of AIDS patients with reduced CD4<sup>+</sup> T cell counts, has been reviewed elsewhere (Elkins et al., 2007), and thus will not be repeated here. More recently, an interesting case involving a 58-year-old man with refractory rheumatoid arthritis was described. The patient had been treated for about a year with methotrexate and an anti-TNF- $\alpha$  therapeutic (Humira<sup>®</sup>, adalimumab), when he presented with fever, a leg wound, enlarged lymph nodes, and eventually skin fistula. Tuberculosis was suspected initially; the lesion was surgically removed, and found

to contain necrotic epithelioid granulomas. Surprisingly, both serology and PCR of a biopsied lymph node diagnosed *F. tularensis* infection (Konstantinou et al., 2009). It is tempting to speculate that TNF- $\alpha$  deficiency, provided in this case by drug treatment, increased susceptibility to *Francisella* infection, similar to observations in animal models (Cowley et al., 2008) and in mycobacteria infections of humans (Gardam et al., 2003).

Of note, although only about 20 cases of human infection with *F. philomiragia* have been reported in the literature, disease caused by this species is usually associated with immune defects. These include corticosteroid treatment, CGD, and near-drowning episodes (Hollis et al., 1989; Sicherer et al., 1997). The association between *Francisella* and CGD, in which neutrophils fail to produce fully functional NADPH oxidase and thus reactive oxygen radicals, obviously suggests a role for these mediators in human resistance to infection.

The experimental literature now frequently refers to the immunosuppressive nature of infection with virulent *Francisella* (the topic of another chapter in this issue), but naturally infected patients as well as vaccines eventually develop robust and readily measurable T and B cell responses to the bacterium. These responses have been studied for many years, particularly in regions such as Scandinavia which have appreciable amounts of disease. An outbreak of ulceroglandular tularemia in Sweden in 2003–2004 provided a unique opportunity to obtain peripheral blood cells from patients within days of infection, and perform large scale transcriptional profiling of human gene expression by microarray (Andersson et al., 2006a). Within 2–3 days, there was clear evidence for increased expression of genes regulated by interferon gamma (IFN- $\gamma$ ) and related to apoptosis, but also indications of down-regulation of many genes related to both innate and adaptive immune responses. Thus infection in humans may be characterized by both appropriate and subversive types of host reactions.

The major means to diagnose tularemia is still based on four-fold increase of serum antibodies to the bacterium between acute and convalescent sera. Robust specific IgM, IgG, and IgA serum antibodies, much of them directed against *Francisella* lipopolysaccharide (LPS), can be detected roughly simultaneously about 6–10 days after the onset of symptoms, or about 2 weeks after infection. Antibody responses peak between 1 and 2 months after infection, and persist for about a decade before diminishing (Koskela and Salminen, 1985). Large scale efforts using 2-D gel blotting (Janovska et al., 2007) or protein chips with a library of *Francisella* proteins (Sundaresh et al., 2007), reacted with patient sera, are beginning to identify and catalog the bacterial proteins recognized. No obvious immunodominant B cell epitopes have been revealed, however, and as a result panels of antigens have been proposed for diagnostic purposes (Sundaresh et al., 2007).

Within about 2 weeks after infection, *ex vivo* production of typical Th1-type cytokines such as IFN- $\gamma$ , TNF- $\alpha$ , and IL-2 by CD4<sup>+</sup> and CD8<sup>+</sup> T cells is readily detectable in human peripheral blood lymphocytes (PBLs) obtained from tularemia patients (Koskela and Herva, 1980; Surcel et al., 1991). Unlike antibody responses, however, human CD4<sup>+</sup> and CD8<sup>+</sup> T cell PBL responses persist for as long as 30 years after documented infection (Ericsson et al., 1994). The development of more sensitive assays has facilitated even earlier detection of cytokines such as IFN- $\gamma$ , which may be produced by both innate immune cells

and nascent specific T cells. As a result, recent biological assays being developed for diagnosis have been based on *ex vivo* stimulation of whole peripheral blood leukocytes with bacteria, followed by assessment of IFN- $\gamma$  secretion (Eliasson et al., 2008).

A curious, and still unexplained, feature of natural infection is the large expansion of phosphoantigen-responsive V $\gamma$ 9/V $\delta$ 2 T cells in peripheral blood within the first 7 days after onset of symptoms in tularemia patients (Poquet et al., 1998). This intriguing phenomenon, which can result in as many as 30% of all CD3<sup>+</sup> cells in human peripheral blood being V $\gamma$ 9/V $\delta$ 2 T cells, is discussed in more detail below.

## HUMAN IMMUNE RESPONSES REVEALED BY VACCINATION AGAINST *FRANCISELLA*

As noted above, and discussed in detail in another chapter in this issue, there is a long history of using various live attenuated strains of *Francisella* as vaccines, particularly in the former Soviet Union (Sändstrom, 1994). As a reference point for further discussion of immune responses generally, here we include a brief summary of human immune responses to the LVS strain. Usually administered by scarification, LVS has been studied in western countries and particularly in the U.S. These studies have mostly used investigational lots of LVS produced in the 1970s by the Department of the Army; more recently, LVS was re-derived from the original lots, and newly manufactured under modern GMP conditions (El Sahly et al., 2009). Microarray studies of gene changes in PBLs from five volunteers obtained between 1 and 14 days after vaccination with LVS indicated a robust up-regulation of expression of pro-inflammatory mediators and genes involved in dendritic cell (DC) function, which peaked within 2 days (Fuller et al., 2006, 2007). Similar to natural infection, humans vaccinated with LVS develop specific IgM, IgA, and IgG antibodies in serum about 2 weeks after vaccination that persist for at least 1.5 years (Waag et al., 1995; El Sahly et al., 2009). However, as noted at the outset, anti-*Francisella* serum antibodies titers in vaccinated individuals have not been predictive of protection against virulent tularemia, and vaccination with killed bacteria (that elicit anti-*Francisella* antibodies but no detectable cell-mediated immune responses) has provided little or no benefits in human studies (Francis and Felton, 1942; Foshay, 1950; Overholt et al., 1961; Saslaw et al., 1961a,b; Hambleton et al., 1974; Burke, 1977; Tärnvik, 1989). In addition to serum antibodies, stimulated PBLs, or enriched CD4<sup>+</sup> and CD8<sup>+</sup> T cells, obtained from volunteers 2–4 weeks or more after LVS vaccination proliferated and produced typical Th1-type cytokines, especially IFN- $\gamma$ , *ex vivo* (Waag et al., 1995; El Sahly et al., 2009). In one study, the responding cells from both LVS vaccines and patients after natural infection were characterized as traditional CD4 and CD8 memory T cells, mostly with an effector memory phenotype (CD45RA<sup>-t</sup>, CD62<sup>-</sup>; Salerno-Goncalves et al., 2009).

## ANIMAL MODELS OF HUMAN IMMUNITY TO *FRANCISELLA*

Detailed consideration of animal models of *Francisella* infection is well beyond the scope of this article, and a comprehensive recent review is available elsewhere (Lyons and Wu, 2007). Nonetheless, because the bulk of data on immune responses is currently being generated using animal models of infection, here we include brief summaries of recent developments as they relate to modeling the immune responses of humans (for summary, see **Table 1**).

**Table 1 | Characteristics of human *Francisella* infections compared to current experimental animal models.**

Strain	Human infection/vaccination	Experimental animal models				
		Non-mammalian		Mammalian*		
		Insect ( <i>Drosophila</i> )	Fish (zebrafish)	Mice (C57BL/6J)	Rats (Fisher 344)	Marmosets (common)
Type A1a/b Ft	Aggressive infection, highly virulent, can be lethal	Not tested	Not tested	LD <sub>50</sub> < 10, all routes tested	LD <sub>50</sub> IT 5 × 10 <sup>2</sup>	LD <sub>50</sub> by aerosol <10
Type A2 Ft	Causes morbidity, but rarely lethal	Not tested	Not tested	LD <sub>50</sub> < 10, all routes tested	Not tested	Not tested
Type B Ft	Causes morbidity, but rarely lethal	Not tested	Not tested	LD <sub>50</sub> < 10, all routes tested	LD <sub>50</sub> IT 10 <sup>5</sup> , IP < 10	Lethal natural infections observed
LVS	Attenuated Type B; skin or respiratory inoculation establishes productive infection, vaccinates*	Productive infection; intra/extracellular replication	Not tested	LD <sub>50</sub> 10 <sup>6</sup> ID, 10 <sup>5</sup> IN, <10 IP or IV; vaccinates when sublethal*	LD <sub>50</sub> IT 10 <sup>5</sup> , IP >10 <sup>6</sup> ;	Not tested
<i>F. novicida</i>	Infections rare, never lethal; some association with immunodeficiencies	Productive infection; intra/extra cellular replication	Not tested	LD <sub>50</sub> 10 <sup>3</sup> ID*, <10 IP, IV, or IN	LD <sub>50</sub> IT 5 × 10 <sup>6</sup>	Not tested
<i>F. philomiragia</i>	Infections rare, never lethal; associated with CGD, other immunodeficiencies	Not tested	Not tested	Not tested	Not tested	Not tested
<i>Francisella</i> spp. from fish	No known human pathogenicity	Not tested	Infects; ↑ cytokine mRNA	Not tested	Not tested	Not tested

\* Stimulates production of pro-inflammatory cytokines, serum anti-*Francisella* antibodies, Th1 T cells, and Th1-related cytokines; extent of protection against secondary challenge infection varies with route of vaccination, route of challenge, and challenge strain.

\*All LD<sub>50</sub>s are approximate and expressed in terms of CFU.

# Survival of primary and secondary infections are heavily B cell dependent, unlike other strains. For references, see corresponding text.

## NON-MAMMALIAN INFECTION MODELS

Two groups have explored insect models of *Francisella* infection. Both LVS (Vonkavaara et al., 2008) and *F. novicida* (Ahlund et al., 2010; Moule et al., 2010) productively infect and replicate in *Drosophila melanogaster*, both by infection of phagocytic fly hemocytes and by extracellular replication. Both efforts focused on the ability of the model to identify bacterial virulence factors; mutations in bacterial genes important to virulence in mouse models, notably pathogenicity island genes including *mglA* and others regulated by *mglA*, clearly contributed to virulence in flies. Given that deer flies are vectors of *Francisella* infection, however, it remains to be revealed whether the fly host biology discovered is applicable only to the vector, or also helpful in modeling human responses.

Initial efforts to establish *Francisella* infection of zebrafish, another genetically tractable system that has a more complex immune system than *Drosophila*, have recently been reported as well. In the last 3–4 years, new *Francisella* spp. have been isolated from diseased fish, both wild and cultivated. The zebrafish study used one of these strains, and demonstrated productive experimental infection followed by up-regulated expression of IL-1 $\beta$ , IFN- $\gamma$ , and TNF- $\alpha$ , analogous to mammalian pro-inflammatory responses. There was no increase, and perhaps transient down-regulation, of iNOS, however (Vojtech et al., 2009).

## MAMMALIAN INFECTION MODELS

For all the obvious reasons, the majority of immunological studies of *Francisella* have used mouse models. The available data indicate that mice are a reasonable model of human immune responses, at least at a first approximation, but less satisfying as a model for pathogenicity. Inbred laboratory strains are readily susceptible to infection with all *Francisella* isolates tested to date; bacteria disseminate to the same target organs of the reticuloendothelial system, and infected tissues develop granulomatous pathologies that appear roughly comparable to lesions described in tissues of infected people. There is a major discrepancy between humans and mice in virulence and lethality, however. In mice, the LVS strain establishes a sublethal vaccinating infection when administered via skin inoculation, but kills mice at low doses when introduced by other routes, including intravenous (IV), intramuscular, or intraperitoneal (IP), and is intermediate for respiratory infections (Elkins et al., 2003). Importantly, infection with both Type A and Type B *F. tularensis*, as well as *F. novicida*, kills mice within a week with essentially any dose and when introduced by any route of infection. In contrast, as noted above, human Type B infections in particular are rarely lethal (Staples et al., 2006; Kugeler et al., 2008). Human *F. novicida* infections are quite rare, and when detected are sometimes associated with immunocompromised individuals (Hollis et al., 1989; Whipp et al., 2003; Leelaporn et al., 2008). To date, there is only one report of *Francisella* infection of HLA-DR4 transgenic mice, with the goal of uncovering antigens recognized by human T cells (Yu et al., 2010); but as expected, these mice were equally susceptible to intranasal LVS infection as wild type mice. It remains to be determined whether “humanized” mice created by engraftment of human stem cells exhibit susceptibilities that better approximate human infection profiles.

Over the years, other small animal models for *Francisella* infection have been developed using rats, guinea pigs, hamsters, voles, and rabbits. Several recent reports, coupled with older literature, indicate that infection of Fisher 344 rats with different *Francisella* strains may better approximate the phenotype of human infections than these other models. Both Fisher 344 and Lewis rats are much more resistant to *F. novicida* infection than mice, due at least in part to rapid production of nitric oxide from macrophages following recognition of the *F. novicida* LPS chemotype (Cowley et al., 1997; Ray et al., 2010). In a direct comparison, the intratracheal (IT) LD<sub>50</sub> of Fisher 344 rats was recently reported to be  $5 \times 10^2$  for Type A *F. tularensis* subsp. *tularensis* (SchuS4);  $1 \times 10^5$  for Type B *F. tularensis* subsp. *holarctica* (OR960246);  $5 \times 10^6$  for *F. novicida*; and greater than  $10^7$  for LVS (Ray et al., 2010). Of note, however, Fisher 344 rats were highly susceptible to IP infection with a different Type B *F. tularensis* subsp. *holarctica* strain (FSC108), although still quite resistant to IP LVS infection (Raymond and Conlan, 2009). Nonetheless, overall the hierarchy of susceptibility of rats appears to generally reflect human *Francisella* infections, and provide a more satisfying profile than that of mice. Equally important, Fisher 344 rats vaccinated IT, intradermally (ID), or subcutaneously (ID) with  $\sim 10^7$  LVS survived IT challenge with at least 100 LD<sub>50</sub>s of challenge with Type A *F. tularensis* subsp. *tularensis* (SchuS4; Wu et al., 2009; Ray et al., 2010). Thus this rat strain appears to provide both a useful model for both infection and immunological studies for further analyses.

Despite the practical appeal of small animal models, studies using non-human primates remain important not only for basic studies of host–pathogen interactions but for testing of drugs, vaccines, and therapeutics. Historically, monkeys have been considered to be even more susceptible than humans to *Francisella* infection. Outbreaks of tularemia in various species of monkeys in both zoo and experimental colonies have been reported repeatedly (Spletstoeser et al., 2007). There is an extensive older literature using monkeys, particularly Rhesus monkeys, for both natural history and vaccination studies (Lyons and Wu, 2007; Kugeler et al., 2008). Most recently, interest in product development has spurred renewed efforts to establish non-human primate models using species currently available for experimental studies. Marmosets (*Callithrix jacchus*) suffer lethal infection with as few as 10 CFU of Type A *F. tularensis* subsp. *tularensis* (SchuS4) administered by aerosol, with pathology that appears similar to that of humans. Infected marmosets further exhibited production of pro-inflammatory cytokines, as well as increased numbers of the major lymphoid and myeloid cell subpopulations in lungs and blood (Nelson et al., 2009, 2010). Similarly, the profile of aerosol infection of African green monkeys (*Chlorocebus aethiops*) given  $\sim 700$  CFU of SchuS4 was described recently (Twenhafel et al., 2009), and studies in cynomolgus monkeys as well as comparisons between species are underway (Wilder and Gelhaus, 2009). While it is premature to draw conclusions about the relative strengths and weaknesses of each of these approaches, further studies will no doubt provide data that informs the value of different non-human primate models for both pathogenesis and immunological studies.

## IN VIVO IMMUNE RESPONSES TO *FRANCISELLA NOVICIDA* AND MUTANTS BASED ON *F. NOVICIDA*

Although a comprehensive discussion of the relative virtues of conducting experimental studies using *F. tularensis* strains versus *F. novicida* strains is outside of the topic of this review, some general comments regarding immunological responses are pertinent here. For many years, only *F. novicida* was amenable to genetic manipulation; efforts to transform *F. tularensis* strains with transposons or develop mutants via allelic exchange using traditional techniques either failed, or were of such low efficiency as to be impractical. Following recent concerted efforts to develop better genetic tools for manipulation of *F. tularensis*, this situation has changed greatly. A number of transposon banks and deletion mutants of *F. tularensis* Type A, Type B, and LVS strains have been developed in the last ~5 years. Nonetheless, manipulation of *F. novicida* remains considerably easier; further, this strain is exempt from Select Agent registration in the U.S., and generally used under BSL-2 laboratory conditions. Thus *F. novicida* remains popular for genetic studies, and mutants have frequently been used for *in vivo* infection studies, particularly those seeking virulence factors. However, when reading this literature, it is important to note that *F. novicida*'s name has been written as both *F. novicida* and later *F. tularensis* subsp. *novicida*, and the appropriate current designation remains controversial (Busse et al., 2010; Huber et al., 2010; Johansson et al., 2010).

*Francisella tularensis* subsp. *tularensis* and *holarctica* clearly have strong genetic homologies with *F. novicida*, and findings regarding pathogenesis and cell biology made using *F. novicida* and its mutants have often been applicable to the biology of *F. tularensis*. However, there are important biological differences between *F. novicida* and *F. tularensis* strains that appear particularly problematic for immunological studies. As discussed above, the virulence of *F. novicida* in both humans and various animal models is quite distinct from that of the *F. tularensis* subsp. In mice given *F. novicida* intranasally, the cell tropism in lungs is noticeably different from that for LVS and SchuS4. The latter two strains preferentially infect alveolar macrophages and later expand in macrophages, DCs, and neutrophils; in contrast, *F. novicida* starts in neutrophils and alveolar macrophages, and then expands in neutrophils while macrophages and DCs are lesser targets (Hall et al., 2008). Importantly, *F. novicida* expresses a structurally distinct chemotype of LPS that is more pro-inflammatory in mice than the dominant LPS chemotype expressed by *F. tularensis* strains (Cowley et al., 1996; Kieffer et al., 2003; Gunn and Ernst, 2007). Although not yet examined directly, the LPS bioactivity may contribute to the observed sepsis-like syndrome that follows intranasal infection of mice with *F. novicida* (Mares et al., 2008). Each chemotype of LPS also appears to play distinct roles in virulence of the respective bacteria and in contributing to protection in mouse models (Thomas et al., 2007).

Studies of immune responses to *F. novicida* in mice consistently reveal a prominent role for B cells and antibodies that is considerably more dramatic than LVS or fully virulent *Francisella* strains. The LD<sub>50</sub> of *F. novicida* administered to inbred mice ID is about 10<sup>3</sup>. The ID LD<sub>50</sub> of *F. novicida* administered to B cell knockout mice is less than 5 × 10<sup>1</sup>, and those that do survive vaccination are severely compromised compared to wild type mice for survival of secondary lethal IP challenge with LVS (Chou and Elkins, manuscript

in preparation). Similarly, mice vaccinated IN with attenuated mutants in *iglB* or *iglC* of *F. novicida* have large amounts of both IgG<sub>1</sub> and IgG<sub>2a</sub> serum anti-*Francisella* antibodies, which adoptively transfer protection against *F. novicida* challenge to recipients in the absence of primed T cells (Pammit et al., 2006; Powell et al., 2008). For the *iglC* mutant of *F. novicida*, vaccinated mice depleted of CD4<sup>+</sup> T cells at the time of challenge with *F. novicida* survived, and thus protection depended on the presence of antibodies but not effector T cells (Powell et al., 2008). Collectively, the mechanistic data to date paints a picture that is quite distinct from studies using LVS as a vaccine or challenge with virulent *Francisella*.

## SYSTEMIC VERSUS MUCOSAL IMMUNITY TO *F. TULARENSIS*

Although *Francisella* infection can be initiated via multiple routes, historically the majority of studies in the *Francisella* murine model have focused on ID or SC exposure to the pathogen. In particular, ID infection with LVS has been utilized because this route approximates the most likely method of vaccination in humans (scarification or SC inoculation), and also conveniently allows for mechanistic studies of immunity after a sublethal infection in mice. More recent studies have focused on respiratory infections, given the interest in biodefense applications. Mice are much more susceptible to *Francisella* infections initiated via pulmonary routes as compared to the ID/SC route. For LVS, the IN LD<sub>50</sub> is ~10<sup>2</sup>–10<sup>4</sup> bacteria, whereas infection via the ID/SC route exhibits an LD<sub>50</sub> of ~10<sup>6</sup>–10<sup>7</sup> bacteria. For the more virulent Type A and Type B *F. tularensis* strains, both routes of primary infection are rapidly lethal, although protection against secondary respiratory challenge is much more difficult to achieve than protection against ID/SC challenge (Chen et al., 2003). Indeed, to date reasonable protection against virulent Type A respiratory challenge has only been achieved following mucosal (but not parenteral) LVS vaccination (Conlan et al., 2005; Wu et al., 2005; KuoLee et al., 2007). These observations recall theories of the “compartmentalization” of the mucosal immune system (Gill et al., 2010). In support of this concept, respiratory vaccination is not the only mucosal immunization route that is protective against respiratory challenge: LVS immunization via the oral route also results in survival of Type A pulmonary challenge, whereas ID/SC immunization does not (KuoLee et al., 2007). The immune mechanisms that are uniquely induced by mucosal – but not parenteral – vaccination remain to be identified. Recent data indicates that important cytokines such as IL-17A are preferentially produced in LVS-infected lungs following respiratory – but not parenteral – infection (Woolard et al., 2008; Cowley et al., 2010). Thus certain immune mediators may be of greater importance depending on the initial tissue encountered during vaccination and/or challenge; this possibility remains an interesting avenue of future investigation.

As noted above and in detail in another article in this issue, one theme that has emerged in recent years is the ability of *Francisella* to initially suppress or avoid induction of early immune responses following primary respiratory infection. Although multiple cell functions are clearly suppressed by both LVS and Type A *F. tularensis*, virulent Type A strains execute a broader range of immunosuppression that likely contributes to their increased virulence (Bosio et al., 2007). Further, some immunosuppressive functions – such

as prostaglandin-E2 (PGE2) production or reduced levels of CD14 – may be operative primarily in certain tissues such as the lung (Woolard et al., 2008). Thus, both the route of inoculation and the strain of *Francisella* can have a widely different impact on the quantity and quality of immune responses measured. Differences in these factors can often make it difficult to draw comparisons between different studies.

## MEDIATORS OF INNATE IMMUNE RESPONSES

### COMPLEMENT

Recent studies documenting that *F. tularensis* and *F. novicida* can survive extracellularly in whole blood *in vitro* and *in vivo* during mouse infections (Forestal et al., 2007; Yu et al., 2008) have generated new perspectives on the role of extracellular mediators of immunity during infection. *F. tularensis* is clearly resistant to the bactericidal effects of sera from a variety of species, a feature that was initially associated with cell surface carbohydrate structures described as a capsule (Hood, 1977). More recently, however, studies using *Francisella* strains with targeted mutations in LPS biosynthesis genes have demonstrated that complement resistance is critically dependant upon LPS O antigen (Thomas et al., 2007; Clay et al., 2008). Although resistant to its bactericidal effects, *Francisella* clearly binds by complement components: complement-derived opsonins and complement receptors enhance phagocytic uptake of *F. tularensis* by a variety of cell types, including human and mouse monocytes and macrophages (Clemens et al., 2005; Pierini, 2006; Schulert and Allen, 2006), and human monocyte-derived DCs (Ben Nasr et al., 2006; Ben Nasr and Klimpel, 2008). Indeed, C3 complement components – but not the lethal C5b-C9 membrane attack complex – were shown to be deposited on the cell surface of *F. tularensis* after incubation in human sera. These C3-derived opsonins enhanced phagocytic uptake by human DCs via a process that promoted intracellular survival, bacterial growth, and DC death (Ben Nasr et al., 2006; Ben Nasr and Klimpel, 2008). This strategy of resistance to complement killing, and the use of complement opsonins to gain entry into an intracellular niche that supports bacterial growth, is likely an important virulence determinant of *Francisella*. In support of this hypothesis, *Francisella* O antigen mutants are attenuated in the mouse model of infection (Thomas et al., 2007).

### PATTERN-RECOGNITION RECEPTORS AND EARLY CYTOKINE PRODUCTION

Host cells express a variety of germline-encoded “pattern-recognition receptors” (PRRs), which recognize a number of evolutionarily conserved molecular patterns expressed only by pathogens. PRRs include the membrane-anchored Toll-like receptors (TLRs) and the cytosolic NOD-like receptors (NLRs). Because *Francisella* initially resides in a membrane-bound phagosome prior to escape into the cytosol, the bacterium has the potential to interact with both membrane and cytosolic PRRs. Indeed, recent evidence has shown that bacterial DNA engaged the cytoplasmic NLR sensor “absent in melanoma 2” (AIM2) within *Francisella*-infected macrophages, a process that was necessary to initiate inflammasome assembly, caspase-1 activation, and IL-1 $\beta$  release (Jones et al., 2010; Rathinam et al., 2010; Ulland et al., 2010). Since the role of the inflammasome in *Francisella* infection is reviewed in detail in

another article in this issue, here we focus our discussion on the current knowledge of the contribution of TLRs to the initiation of *in vivo* host responses to *Francisella*.

Current *in vitro* and *in vivo* evidence indicates that TLR2 and MyD88 are critical mediators of inflammatory responses to *Francisella*. *In vitro* studies have demonstrated that TLR2 is required for murine DCs to activate NF-KB, produce TNF- $\alpha$ , and up-regulate maturation markers in response to LVS (Katz et al., 2006). Similarly, TLR2 was required for induction of a range of pro-inflammatory cytokine genes (e.g., TNF- $\alpha$ , IL-1 $\beta$ , KC, p40, RANTES, IFN- $\gamma$ , IL-6, IFN- $\beta$ , MCP-1, and iNOS) by peritoneal macrophages in response to LVS (Cole et al., 2007; Abplanalp et al., 2009). Full signaling via TLR2 in LVS-infected macrophages required the adaptor molecules MyD88 and TIRAP (Cole et al., 2010). Consistent with the membrane-bound nature of TLR2, LVS co-localized intracellularly within a TLR2/MyD88-containing phagosome (Cole et al., 2007). Interestingly, an LVS mutant that cannot escape the phagosome induced greatly increased expression of TLR2-dependent pro-inflammatory genes (such as TNF- $\alpha$ ), and decreased expression of genes that rely on cytosolic recognition of bacteria (such as IFN- $\beta$ ; Cole et al., 2008). These data underscore the existence of the two separate arms of pathogen detection and early cytokine responses – those cytokines whose production is initiated solely via TLR signaling (TNF- $\alpha$ , IL-6), and those cytokines that require both TLR and NLR signaling (IFN- $\beta$ , IL-1 $\beta$ ).

*In vitro* data are supported by numerous *in vivo* studies that demonstrate increased susceptibility of TLR2 and MyD88 KO mice to LVS infection (Collazo et al., 2006; Malik et al., 2006; Abplanalp et al., 2009). Intranasal LVS infection of TLR2 KO mice resulted in increased mortality and decreased survival times as compared to their WT counterparts, accompanied by higher bacterial organ burdens and lower levels of TNF- $\alpha$  and IL-6 in the lungs (Malik et al., 2006; Abplanalp et al., 2009). Although TLR2 KO mice were significantly more susceptible to LVS infection than wild type mice via both the IN and ID routes, mice were consistently able to survive lower doses of LVS. This was in stark contrast to MyD88 KO mice, which were exquisitely susceptible to even the smallest doses of LVS delivered via both routes. This indicates a role for MyD88 in LVS infection that extends beyond its function as an adaptor for TLR2 signaling (Collazo et al., 2006; Abplanalp et al., 2009). Other MyD88-dependent molecules that have been tested in the LVS infection model include IL-18, IL-1R, TLR4, TLR1, TLR6, and TLR9 (for summary, see Table 2). Although most have not been exhaustively studied, mice singly deficient for these molecules did not exhibit notably increased susceptibility to LVS infection as compared to their WT counterparts (Collazo et al., 2006; Abplanalp et al., 2009). Similarly, TLR2/9 double KO mice readily survived doses of up to 10<sup>5</sup> LVS given ID (Chou and Elkins, manuscript in preparation). Further studies in mice deficient in multiple MyD88-dependent receptors would be needed to rule out the possibility of redundancy and/or compensatory effects.

Investigations of the bacterial ligands responsible for TLR recognition of *Francisella* indicate that LVS expresses lipoproteins that can activate HeLa cells transfected with either TLR2/TLR1 or TLR2/TLR6 heterodimers. Specifically, the lipoproteins Tul4 and FTT1103 stimulated activity via the TLR2/1 heterodimer, and induce expression of a panel of chemokines in both human peripheral blood

**Table 2 | The contribution of cytokine receptors, toll-like receptors, and other effector components of immune responses to *in vivo* murine infection with *Francisella tularensis*\*.**

Component	Effect of depletion/knockout <sup>§</sup>		Cellular source(s) <sup>†</sup>	
	1° infection	2° infection	Innate	Acquired (T cells)
<b>CYTOKINE RECEPTORS</b>				
IL-4R	Slightly more susceptible at high dose (3 × 10 <sup>3</sup> IN)	N/A	MØs	N/A
IL-4Rα	Less susceptible to lethal dose (10 <sup>4</sup> IP)	N/A	N/A	N/A
IFNαR1	Less susceptible <sup>‡</sup> (ID)	N/A	N/A	N/A
IL-1R	No change (ID)	Survive lethal 10 <sup>6</sup> IP challenge	N/A	N/A
TNFR1/2	Lethal at low doses (10 <sup>2</sup> aerosol and 20 ID)	N/A	MØs	CD4 <sup>+</sup> , CD8 <sup>+</sup>
<b>TOLL-LIKE RECEPTOR-RELATED</b>				
TLR2	More susceptible at high/moderate doses (4 × 10 <sup>3</sup> IN and 4 × 10 <sup>4</sup> ID)	Survive lethal 10 <sup>6</sup> IP challenge	MØs, DCs	N/A
MyD88	Lethal at all doses (IN and ID)	N/A	MØs, DCs	N/A
TLR4	No change (IN and ID)	Survive lethal 10 <sup>6</sup> IP challenge	MØs, DCs	N/A
TLR9	No change (ID)	Survive lethal 10 <sup>6</sup> IP challenge	N/A	N/A
TLR6	No change (IN)	N/A	MØs, DCs	N/A
TLR1	No change (IN)	N/A	N/A	N/A
<b>OTHER</b>				
STAT1	Lethal at high dose <sup>‡</sup> (10 <sup>3</sup> aerosol)	N/A	MØs	N/A
iNOS	Lethal at all doses (ID and aerosol)	N/A	MØs	N/A
p47 <sup>phox</sup>	Sublethal at low doses; lethal at moderate doses (LD <sub>50</sub> 4 × 10 <sup>3</sup> ID)	N/A	MØs	N/A
MMP-9	Less susceptible (IN)	N/A	N/A	N/A

\*Data presented are for LVS unless otherwise noted.

<sup>†</sup>Data for *F. novicida* infection.

<sup>‡</sup>Data presented describe changes in organ CFUs or survival differences as compared to WT mice. All bacterial doses are expressed in terms of CFU.

<sup>§</sup>Only the cell types for which there is direct or indirect evidence of expression during *Francisella* infection (in vitro or in vivo) are listed.

N/A, data not available; ID, intradermal; IN, intranasal; IP, intraperitoneal; MØs, macrophages; DCs, dendritic cells.

For references, see corresponding text.

mononuclear cell (PBMC) and mouse bone marrow-derived DCs (Thakran et al., 2008). A role for TLR6 in recognition of LVS was similarly demonstrated by the inability of bone marrow-derived DCs harvested from TLR6 KO mice to produce TNF-α in response to LVS (Katz et al., 2006). Conversely, in other studies, macrophages from TLR6 KO mice infected with LVS expressed higher levels of TNF-α, IL-6, and MCP-1 than their WT counterparts, and, as mentioned above, TLR6 KO mice exhibit no increased susceptibility to LVS infection (Abplanalp et al., 2009). Thus, it is possible that in some circumstances TLR6 and TLR1 are redundant in their abilities to recognize LVS ligands in concert with TLR2.

Bacterial LPS is usually one of the first Gram negative pathogen-associated molecular patterns to be detected by the immune system, specifically targeted by the PRR TLR4. However, studies of *Francisella* LPS over the years have found it to be biologically inactive, unable to induce production of pro-inflammatory cytokines from all cell types tested. Subsequent studies have shown that *Francisella* LPS is not recognized by either human or murine TLR4 or TLR2, and further cannot act as an antagonist to block binding of *Salmonella* LPS to TLR4 (Duenas et al., 2006; Hajjar et al., 2006). Elucidation of the structure of *Francisella* LPS

demonstrated that it is uniquely tetra-acylated and monophosphorylated, both structural properties that can reduce the endotoxicity of LPS (Gunn and Ernst, 2007). Indeed, the only biological activity ascribed to *F. tularensis* LPS (Ft-LPS) thus far is its ability to bind and stimulate rapid antibody production by the “innate” B lymphocyte subset B1a cells, and this function was clearly TLR4-independent (Cole et al., 2009); see below. Although *Francisella* LPS clearly has little if any TLR4-dependent stimulatory activities (Duenas et al., 2006), one recent study revealed that the *F. tularensis* heat shock protein DnaK can initiate cytokine production by DCs through TLR4 *in vitro* (Ashtekar et al., 2008). Despite the potential for *Francisella* to stimulate TLR4 through non-LPS ligands, TLR4-deficient mice do not exhibit increased susceptibility to *Francisella* infection, indicating that this TLR is not critical for *in vivo* defense (Chen et al., 2004, 2005b; Collazo et al., 2006).

More recently, the downstream effects of TLR2/MyD88 signaling have been studied in more detail. LVS infection of bone marrow-derived macrophages (BMDMs) induced TLR2-dependent splicing of mRNA for XBP-1, a transcription factor necessary for production of TNF-α and IL-6 mRNA. The importance of XBP-1 in resistance to LVS infection was confirmed by the presence of higher levels of

LVS in the organs of XBP-1-deficient mice as compared to WT mice after aerosol infection (Martinon et al., 2010). In a different study, *F. novicida* infection of human PBMCs and murine macrophages resulted in up-regulation of the micro-RNA miR-155 in a manner that was dependent on TLR2 and MyD88. This micro-RNA blocks translation of SHIP, a negative regulator of the PI3K/Akt pathway (Cremer et al., 2009). The net effect of the release of Akt from inhibition was an increase in pro-inflammatory gene expression. Indeed, mice that express a constitutively active form of Akt survive an otherwise lethal *F. novicida* infection (Rajaram et al., 2009). Interestingly, experiments using the virulent Type A *F. tularensis* SchuS4 indicated that SchuS4 had the opposite effect on miR-155 induction, namely down-regulating the pro-inflammatory cytokine response. These results thus reveal one mechanism by which virulent *Francisella* may inhibit early immune responses (Cremer et al., 2009). These data are also in agreement with Affymetrix microarray and Western blot analyses of human PBMCs that indicated down-regulation of the PI3K/Akt pathway and TLR2 after SchuS4, but not *F. novicida*, infection (Butchar et al., 2008a; Melillo et al., 2010).

### CYTOKINES AND CHEMOKINES IN PRIMARY INFECTION WITH *FRANCISELLA*

Cytokine production during *Francisella* infection is a very active area of research, and our understanding of the important cytokine and chemokine mediators continues to evolve (for an overview, refer to **Figure 1**). Similar to other intracellular pathogens, rapid production of pro-inflammatory and Th1-type cytokines is critical for initial control of *Francisella* infection in all settings examined to date. However, as noted earlier, there is a striking lack of crucial pro-inflammatory cytokines during the first 48 h of murine pulmonary *Francisella* infection. It is not until after the first 48–72 h of murine infection that key cytokines and chemokines become readily detectable. During virulent *F. tularensis* respiratory infection of mice, mRNA levels of essential antimicrobial cytokines such as IFN- $\gamma$  and TNF- $\alpha$  rose in the lungs between days 2 and 4 (Andersson et al., 2006b), and serum/distal organ levels of pro-inflammatory mediators such as RANTES, IL-6, and IL-1 $\beta$  became detectable on days 3–4 (Conlan et al., 2008). However, after 2 days of unrestricted bacterial growth, key organs such as the lungs and liver harbor extremely high bacterial burdens. Thus the relatively late up-regulation of antimicrobial host immune mechanisms appears to be too late to prevent death. Indeed, a number of studies support the hypothesis that augmenting production of pro-inflammatory cytokines very early during infection can be beneficial. For example, mice administered either a synthetic TLR4 agonist, the TLR3 agonist poly I:C, or recombinant IL-12 shortly before inhalation of *Francisella* exhibited diminished organ bacterial burdens, and enhanced survival (Duckett et al., 2005; Lembo et al., 2008; Pyles et al., 2010).

The widespread up-regulation of multiple cytokines and chemokines by day 3 after murine *F. novicida* pulmonary infection resembles a “cytokine storm” that is associated with severe sepsis – a condition characterized by excessive production of pro-inflammatory cytokines that culminates in capillary leakage, tissue injury, and organ failure. One mediator of severe sepsis, the nuclear DNA-binding protein HMGB-1, was strongly up-regulated and localized extracellularly in mouse lungs by day 3 after *F. novicida* intranasal infection (Mares et al., 2008). Thus damage-associated

molecular pattern molecules such as HMGB-1 are shed from dying host cells, and may be responsible for lethal severe sepsis. This striking outcome was age-dependent: older mice given a pulmonary *F. novicida* infection had significantly increased survival and an associated reduction in development of hypercytokinemia and cell death (Mares et al., 2008). Whether a similar intriguing phenomenon is responsible for mortality during LVS or virulent *F. tularensis* infection *in vivo* remains to be determined, but macrophages infected *in vitro* with SchuS4 also release HMGB-1 (Mares et al., 2008).

Consistent with the ability of virulent *F. tularensis* strains to initially suppress – and then ultimately overwhelm – the murine immune response, most studies examining the role of various cytokines and chemokines in this infection model have shown that mice deficient for such key cytokines as IFN- $\gamma$ , TNF- $\alpha$ , lymphotoxin- $\alpha$ , and iNOS exhibit the same extreme susceptibility to infection via the pulmonary and parenteral routes as fully immunocompetent mice (Chen et al., 2004; Zhang et al., 2008). In contrast, the lower virulence of LVS allows for the determination of a spectrum of susceptibility for the different cytokines and chemokines that contribute to immunity. Thus far, the only cytokine-deficient mice that are exquisitely susceptible to all doses of LVS delivered via any route are those that lack either of the canonical Th1 cytokines, IFN- $\gamma$  or TNF- $\alpha$  (for summary, see **Table 3**; Elkins et al., 2007). Mice deficient for either cytokine usually die within a week after inoculation, suggesting that early innate immune cell production of IFN- $\gamma$  and TNF- $\alpha$  is critical for survival. A recent study of the cell types that produce IFN- $\gamma$  after primary sublethal LVS ID infection revealed that a wide variety of liver and spleen innate immune cells produce IFN- $\gamma$  during the first 7 days after infection, including NK cells, neutrophils, DCs, and cells that match the staining profile of “NK DCs” (De Pascalis et al., 2008). Given that both IFN- $\gamma$  and TNF- $\alpha$  are important for macrophage production of RNI, and that RNI are effective mediators of inhibition of LVS intramacrophage growth *in vitro*, it is likely that induction of iNOS-derived products is one critical early role for these cytokines *in vivo* (Anthony et al., 1992; Lindgren et al., 2004, 2005). Indeed, iNOS-deficient mice die following sublethal LVS infections initiated via a variety of routes (Lindgren et al., 2004), although are not as dramatically impaired as IFN- $\gamma$  or TNF- $\alpha$  knockout mice. Although the cells that produce TNF- $\alpha$  in response to ID LVS infection have not yet been systematically identified, the role of TNF- $\alpha$  during *in vivo* primary ID LVS infection clearly includes induction of reactive nitrogen species (RNS; Cowley et al., 2008). Further, membrane TNF- $\alpha$  is sufficient to partially mediate resistance to primary LVS ID infection, since mice that express only the membrane-bound form of TNF- $\alpha$  (and not the soluble form) exhibited an intermediate level of susceptibility to LVS infection, as well as intermediate levels of RNS (Cowley et al., 2008).

In contrast to the prototypic Th1 cytokines, Th2 mediators have not been examined in much detail during *in vivo* infection. Mice treated with anti-IL-4 antibodies and then infected with LVS ID exhibited an ID LD<sub>50</sub> that was comparable to wild type mice, if not higher (Leiby et al., 1992), while IL-4 knockout mice were found to be only slightly more susceptible to IN LVS pulmonary infection (Ketavarapu et al., 2008), and IL-10 knockout mice were considerably more susceptible to IN LVS pulmonary infection



**Table 3 | The contribution of cytokines and chemokines to *in vivo* murine infection with *Francisella tularensis*\*.**

Component	Effect of depletion/knockout <sup>§</sup>		Cellular source(s) <sup>‡</sup>	
	1° infection	2° infection	Innate	Acquired (T cells)
IFN- $\gamma$	Lethal at all doses (ID, IV, and IN)	Sublethal at some challenge doses ( $2 \times 10^6$ IV and $\sim 10^2$ IP)	M $\phi$ s, DCs, NK cells, "NK DCs"	CD4 <sup>+</sup> , CD8 <sup>+</sup> , and DN
TNF- $\alpha$	Lethal at all doses (ID, IV, and IN); memTNF survive only low doses ( $\sim 10^2$ ID)	Sublethal at lower challenge doses ( $9 \times 10^3$ IV); memTNF survive high lethal $5 \times 10^5$ IP challenge	M $\phi$ s, DCs	CD4 <sup>+</sup> , CD8 <sup>+</sup>
IL-17A	Sublethal at moderate doses ( $10^4$ ID and $10^2$ IN); lethal at high doses ( $\sim 10^3$ IN and IT)	N/A	$\gamma\delta$ T cells	CD4 <sup>+</sup> , CD8 <sup>+</sup> , and DN
IL-18	No change (ID)	Survive high lethal $10^6$ IP challenge	N/A	N/A
IL-4	No change (ID)	N/A	Mast cells	N/A
IL-10	More susceptible at high dose ( $10^3$ IN)	N/A	N/A	N/A
IL-12p35	Sublethal at moderate doses, infection cleared ( $\sim 10^6$ ID); lethal at high doses ( $\sim 10^3$ IN and IT)	Survive high lethal $5 \times 10^6$ IP challenge	M $\phi$ s, DCs	N/A
IL-12p40	Sublethal at moderate doses, chronic infection ( $\sim 10^6$ ID); lethal at high doses ( $\sim 10^3$ IN and IT)	Survive high lethal $10^6$ IP challenge	M $\phi$ s, DCs	N/A
IL-23p19	Lethal at high doses ( $\sim 10^3$ IT)	N/A	N/A	N/A
IL-22	No change (IT)	N/A	N/A	N/A
Mig/CXCR3	No change (ID)	Survive high lethal IP challenge	N/A	N/A
CX3CR1	No change (IN)	N/A	N/A	N/A

\*Data presented are for LVS unless otherwise noted.

<sup>§</sup>Data presented are for survival (or organ CFUs) as compared to WT mice.

<sup>‡</sup>Only the cell types for which there is direct or indirect evidence of expression during *Francisella* infection (in vitro or in vivo) are listed.

N/A, data not available; IN, intranasal; IT, intratracheal; ID, intradermal; IV, intravenous; IP, intraperitoneal; MTD, mean time to death; M $\phi$ s, macrophages; DCs, dendritic cells.

For references, see corresponding text.

(Metzger et al., 2007). Interestingly, as discussed in more detail below, IL-4 receptor  $\alpha$  chain knockout mice were less susceptible to lethal IP LVS challenges (Shirey et al., 2008).

Unlike IFN- $\gamma$  and TNF- $\alpha$ , the role for IL-12 in primary *in vivo* LVS infection is more nuanced. IL-12 is a heterodimer that consists of two distinct proteins, the p35 and p40 subunits. In addition to constituting one component of IL-12, the p40 subunit can also pair with another protein, denoted p19, to produce the IL-23 heterodimer. Thus, mice deficient for p35 lack IL-12, whereas mice deficient for p40 lack both IL-12 and IL-23. Although both p35- and p40-deficient mice can survive sublethal LVS ID infection, they are both clearly compromised. Whereas p35-deficient mice exhibit higher bacterial organ burdens and cleared the infection more slowly than WT mice, p40 KO mice were unable to clear ID LVS infection, exhibiting chronic high liver and spleen bacterial numbers (Elkins et al., 2002). Both types of LVS-infected knockout mice exhibit reduced levels of serum IFN- $\gamma$  (Elkins et al., 2002), a finding that is consistent with the role of IL-12 in positive feedback regulation of IFN- $\gamma$  production by T cells and NK cells. Interestingly, p40-deficient mice exhibited a greater defect in IFN- $\gamma$  production than their p35 counterparts, indicating that IL-23 may have an additional role in inducing IFN- $\gamma$  production (Elkins et al., 2002). Indeed, recent studies found that IL-23 produced by *Francisella*-infected human monocytes induced NK cell production of IFN- $\gamma$ , indicating that both IL-23 and IL-12 can positively regulate IFN- $\gamma$  production (Butchar et al., 2007, 2008b). The unique phenotype of p40 knockout mice indicates that p40 – and by extension, IL-23 – has an as-yet unidentified role in the clearance of sublethal murine LVS ID infection. Whether a similar phenotype

occurs in mice given LVS infection via other routes awaits comprehensive characterization: mice deficient for p35, p40, p19, and/or their associated receptors were more susceptible to pulmonary LVS infection, but the studies to date only used doses approaching the LD<sub>50</sub> (Duckett et al., 2005; Lin et al., 2009).

IL-17A has an unexpected and critical role in primary LVS pulmonary murine infection. First detectable in mouse lungs by day 3 after infection, by days 6–7 the IL-17A-producing T cells identified in mouse lungs included CD4<sup>+</sup> T cells, CD8<sup>+</sup> T cells, double negative (DN) T cells, and  $\gamma\delta$  T cells (Lin et al., 2009; Cowley et al., 2010; Markel et al., 2010). The role of IL-17A in LVS pulmonary infection appears to be multi-fold; IL-17A stimulates LVS-infected DCs to up-regulate production of IL-12 and IFN- $\gamma$  *in vitro*, and stimulates IFN- $\gamma$  production by ovalbumin-specific transgenic T cells. Thus IL-17A appears poised to augment early IFN- $\gamma$  production and aid in polarization of Th1 cells (Lin et al., 2009). However, IL-17A also has a role in the later stages of *in vivo* infection (days 10–21), when T cell-mediated immunity is critical for clearance of the infection: IL-17A knockout mice given a sublethal LVS pulmonary infection exhibit significantly increased bacterial organ burdens at these late time points (Cowley et al., 2010). Higher numbers of IFN- $\gamma$ -producing CD4<sup>+</sup> and DN T cells were present in the lungs of IL-17A KO mice than their WT counterparts at these later time points, indicating that although IL-17A has a role in inducing early Th1 immunity, IFN- $\gamma$ -producing T cells are capable of responding to the infection at later time points. Importantly, the discovery that IL-17A can act in concert with IFN- $\gamma$  to inhibit LVS intracellular growth in macrophages and alveolar type II epithelial

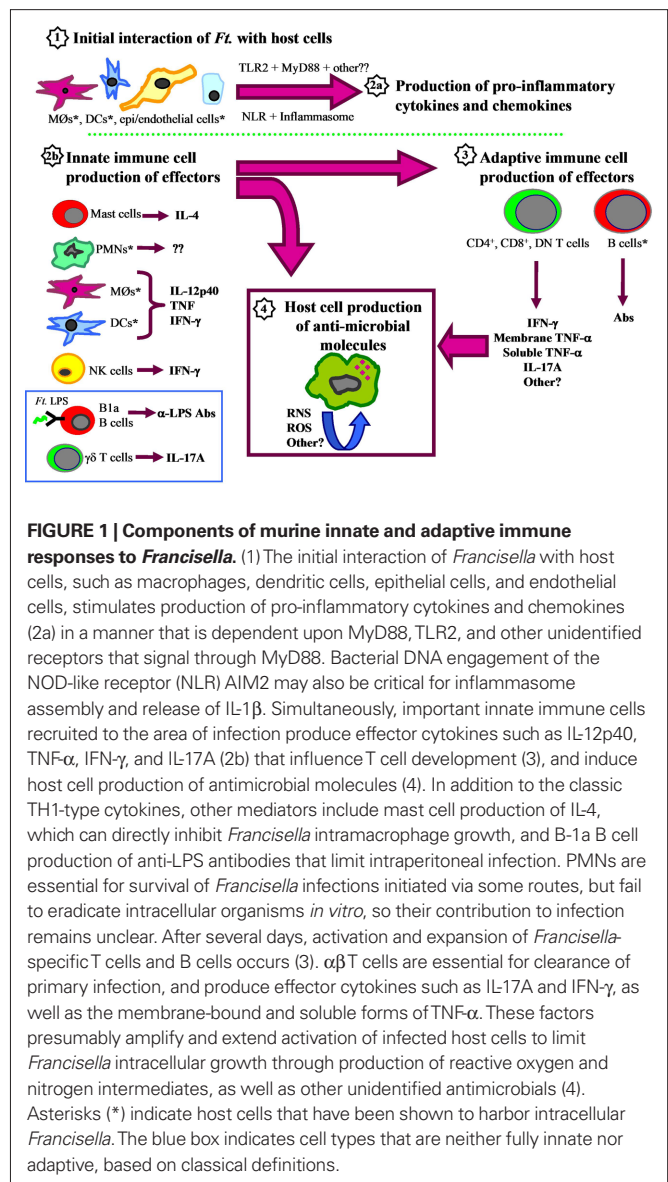
cells (ATII) *in vitro* indicates that IL-17A can be a potent effector cytokine with more than just regulatory properties (Lin et al., 2009; Cowley et al., 2010).

IL-17A is perhaps best known for its ability to recruit neutrophils to the site of infection. In LVS pulmonary infection, IL-17A-deficient mice exhibited decreased levels of lung G-CSF that was accompanied by a reduction in the proportion of lung neutrophils at early time points (days 4 and 6) after infection (Lin et al., 2009; Cowley et al., 2010). Interestingly, type 1 Interferon receptor knockout mice exhibit increased resistance to ID *F. novicida* infection, a phenomenon that was associated with the ability of Type I IFNs to down-regulate the number of IL-17A<sup>+</sup>  $\gamma/\delta$  T cells and diminished recruitment of neutrophils to infected spleens (Henry et al., 2010). A similar Type I IFN-mediated negative regulation of  $\gamma/\delta$  T cell IL-17A production was also observed in mice infected IN with SchuS4, as well as mice given IV *L. monocytogenes* infection. Thus, low levels of IL-17A production by  $\gamma/\delta$  T cells during *Francisella* infection may be a consequence of negative regulation effected by Type I IFNs. This outcome was at least partially attributed to the ability of type I IFNs to induce IL-27 production by *Francisella*-infected macrophages (Henry et al., 2010).

The role of chemokines in host responses to *Francisella* infection is only beginning to be elucidated. Potent mediators of cell trafficking, chemokines are responsible for drawing critical cell types to the site of infection. Indeed, multiple cell types have been shown to produce chemokines in response to *Francisella* infection, including DCs, endothelial cells, alveolar type II cells, and macrophages. Despite the abundant production of many chemokines in response to *Francisella* infection, only a few have been directly examined to date. CCR2 knockout mice, which lack responses to MCP-1/3/5 group of macrophage chemotactic proteins, are quite susceptible to ID LVS infection compared to knockout mice, and fail to exhibit increases in numbers of responding lymphoid and myeloid cells typically found in the spleens of LVS-infected wild type mice (Meierovics and Elkins, manuscript in preparation). However, mice lacking Mig or its receptor CXCR3 did not exhibit increased susceptibility to primary sublethal ID or secondary lethal IP LVS challenges (Park et al., 2002). Similarly, mice deficient for the chemokine receptor CX3CR1 were not more susceptible to IN LVS infection, although they did exhibit modest but significant dysregulation in recruitment of monocytes, neutrophils, and DCs to the lungs (Hall et al., 2009). Chemokines and/or their receptors are functionally redundant, so future studies utilizing mice that are multiply deficient for these factors will no doubt be needed to better define the critical roles of chemokines during *in vivo* *Francisella* infection.

### INNATE IMMUNE RESPONSES FOLLOWING INTERACTIONS OF *FRANCISELLA* WITH HOST CELLS MACROPHAGES AND DENDRITIC CELLS

The virulence of *Francisella* has long been associated with its ability to exploit host phagocytic cells to support its own growth. In particular, the ability of macrophages and DCs from a variety of different host tissues to act as a replicative niche, as well as provide antimicrobial effector functions, has been intensively studied. Resident peritoneal macrophages from rats, mice, and guinea pigs, as well as human peripheral blood monocytes and monocyte-derived DCs, support *Francisella* growth when infected *in vitro*



(Anthony et al., 1991; Ben Nasr et al., 2006; Katz et al., 2006; Chase et al., 2009; Chase and Bosio, 2010). Further, *Francisella* can grow *in vitro* in murine phagocytes harvested from a variety of different tissues, including elicited peritoneal macrophages, alveolar macrophages, BMDMs, bone marrow-derived DCs, and alveolar DCs (Anthony et al., 1991; Polsinelli et al., 1994; Bosio and Elkins, 2001; Bosio et al., 2007). In the absence of exogenous factors that induce activation, intracellular bacterial growth continues unrestricted until death of the host cell; at high multiplicities of LVS infection, this process results in caspase 3-dependent apoptosis of macrophages *in vitro* (Lai et al., 2001; Lai and Sjostedt, 2003). Although this phenomenon has not been demonstrated *in vivo* with LVS, virulent Type A *Francisella* induced widespread caspase 3-dependent apoptosis of macrophages in the organs of mice infected IN. Thus unrestricted growth of *Francisella* can induce apoptotic death of infected host cells *in vivo* as well as *in vitro* (Wickstrum et al., 2009).

Similar to many other intracellular pathogens, treatment of infected macrophages *ex vivo* with IFN- $\gamma$  inhibits *Francisella* growth. In quiescent murine and human macrophages, *Francisella* survives in these cells by rapidly escaping the phagosome to replicate in the cytosol, thereby circumventing phagosome-lysosome fusion and the associated bactericidal effects. LVS phagosomal escape was partially diminished in IFN- $\gamma$ -treated murine peritoneal exudate cells (PECs; Lindgren et al., 2004). Similarly, control of *F. novicida* growth by IFN- $\gamma$ -activated human monocyte-derived macrophages was attributed to its inability to disrupt phagosome-lysosome fusion in the activated cells (Santic et al., 2005). These data suggest that prevention of efficient escape from the phagosome is one mechanism by which IFN- $\gamma$  inhibits *Francisella* intracellular growth. However, more recent studies examining LVS and SchuS4 growth in murine BMDMs and the murine macrophage-like cell line J774.1 demonstrated that IFN- $\gamma$ -activation did not disrupt phagosomal escape (Bonquist et al., 2008; Edwards et al., 2010). These discrepancies are likely to be related to the different *Francisella* subsp. and host cells used for the different studies; regardless, although disruption of phagosomal escape is one potential mechanism by which IFN- $\gamma$ -activation could diminish *Francisella* intracellular growth, it is certainly not the only mechanism at work.

The generation of reactive oxygen species (ROS) and RNS are two well-known mechanisms elicited by IFN- $\gamma$  that can inhibit the growth of intracellular pathogens. Several studies have focused on defining the role of these two classic mechanisms in the control of *Francisella* growth both *in vitro* and *in vivo*. Optimal IFN- $\gamma$ -induced inhibition of LVS growth in murine PECs required the combined action of Phox and iNOS, and was dependent upon the generation of peroxynitrite (Lindgren et al., 2005). These data are supported by the increased susceptibility of mice deficient for either iNOS or the phagocyte oxidase p47<sup>phox</sup> to ID LVS infection as compared to WT mice (Lindgren et al., 2004). In contrast, killing of virulent SchuS4 by IFN- $\gamma$ -activated murine PECs was only partially dependent on iNOS, and correspondingly, SchuS4 was very resistant to killing by H<sub>2</sub>O<sub>2</sub> and peroxynitrite compared to LVS (Lindgren et al., 2007). Further, a study using murine gp91<sup>phox</sup>/iNOS double-deficient BMDMs determined that control of SchuS4 growth by IFN- $\gamma$  was independent of ROS and RNS, iron sequestration, and tryptophan depletion by indoleamine 2,3-dioxygenase (Edwards et al., 2010). Therefore, the IFN- $\gamma$ -elicited bactericidal mechanism(s) involved in inhibition of SchuS4 growth in activated macrophages remain to be fully elucidated, while the less virulent LVS is more susceptible to the well-known bactericidal effects of ROS and RNS.

Interestingly, although LVS-infected murine macrophages initially produce pro-inflammatory cytokines *in vitro*, after several hours they begin to exhibit an “alternatively activated” phenotype – a condition characterized by mitigation of the pro-inflammatory response (including iNOS expression) and up-regulation of anti-inflammatory cytokines such as IL-4, IL-13, and TGF- $\beta$  (Shirey et al., 2008). Differentiation of LVS-infected macrophages into the alternatively activated phenotype required TLR2, IL-4, and IL-13. These alternatively activated macrophages are evident in the peritoneum upon *in vivo* IP LVS infection, and mice deficient for the IL-4 receptor  $\alpha$  chain (used by both IL-4 and IL-13 for signaling) exhibited increased survival following a normally lethal IP LVS infection. This increased resistance was associated with prolonged

pro-inflammatory cytokine production and reduced expression of alternative activation markers (Shirey et al., 2008). Similarly, lethal pulmonary *F. novicida* infection resulted in the development of alternatively activated macrophages in mouse lungs (Mares et al., 2010). Alternative macrophage activation in the *F. novicida* model was exacerbated by the accumulation of dead cell debris *in vitro* and the poor ability of *F. novicida*-infected macrophages to perform efferocytosis (the uptake and clearing of dead cells; Mares et al., 2010). Thus, it appears that during lethal *Francisella* infections, alternative activation of macrophages diminishes pro-inflammatory cytokine production and the generation of macrophage effector mechanisms, and may contribute to the progression of lethal disease.

Using several different *F. tularensis* strains in the mouse model of pulmonary infection, studies have demonstrated that both DCs and macrophages in the lung were infected within 1 h after inoculation; these remained the predominant infected cell types by 24 h after infection (Bosio and Dow, 2005; Hall et al., 2008). Indeed, *Francisella* grows unrestricted within both human and mouse DCs *in vitro* until the host cells die (Ben Nasr et al., 2006; Bosio et al., 2007). *In vitro* and *in vivo* evidence indicates that *Francisella*-infected human and mouse DCs are actively immunosuppressed by the bacterium. Both are impaired in the ability to produce pro-inflammatory cytokines, and are refractory to stimulation with potent immunomodulators such as *E. coli* LPS (Bosio et al., 2007; Chase et al., 2009). This immunosuppression has been attributed to a variety of factors, including the ability of SchuS4 to increase production of the immunosuppressive cytokine TGF- $\beta$  (an indicator of alternative macrophage activation, as described above), as well as the absence of CD14 expression by pulmonary DCs (Bosio et al., 2007; Chase and Bosio, 2010). IN administration of soluble CD14 to SchuS4-infected mice increased lung cytokine production, and reduced SchuS4 replication in the lungs and dissemination to the spleen (Chase and Bosio, 2010). Thus CD14 increased the capacity of DCs to “detect” SchuS4 infection, although paradoxically CD14 is not normally abundant in pulmonary tissues and thus its paucity may contribute to SchuS4 immune evasion. Interestingly, recent data has shown that DCs not only serve as a silent replicative niche for *Francisella* after respiratory infection, but they also transport the pathogen to the mediastinal lymph nodes, and therefore may play a prominent role in early pathogen dissemination (Bar-Haim et al., 2008).

#### NON-PHAGOCYtic CELLS

In recent years the spectrum of cell types infected by *Francisella* has broadened to include non-phagocytic cells, such as kidney epithelial cells, ATII, hepatocytes, and fibroblasts. The contribution of non-phagocytic cells to *Francisella* virulence was revealed by a recent study using a  $\Delta pyrF$  SchuS4 mutant. Although this mutant grew less vigorously than WT bacteria in macrophages, it exhibited close to WT levels of growth in some non-macrophage cell types, and retained full virulence in the murine model of IT infection (Horzempa et al., 2010). Although not conclusive, this study suggests that *Francisella* growth in non-macrophage cell types contributes substantially to the virulence of the organism.

Alveolar epithelial cells, which form the interface between the outside environment and the host lung interior, are well positioned to interact with *Francisella* very early during respiratory infection.

TEM micrographs showed LVS in contact with ATII cells in the airways of mice 2 h after an IN infection (Gentry et al., 2007). *In vitro* cultures of primary human ATII cells stimulated with SchuS4 and LVS produced high levels of IL-8, MCP-1, GRO- $\alpha$ , and GM-CSF (Gentry et al., 2007). Further, these conditioned culture supernatants induced transmigration of PMNs and DCs through cultured primary human pulmonary microvasculature endothelial cells (HVECs), a cell type that lines blood vessels and is found in close juxtaposition to ATII cells *in vivo* (Gentry et al., 2007). Studies of the direct interaction of *Francisella* with HVECs showed that LVS could be internalized – but did not replicate – in these cells, inducing a blunted pro-inflammatory response and transmigration of PMNs with a suppressed phenotype (Forestal et al., 2003; Moreland et al., 2009; Bublitiz et al., 2010). It is not yet known whether PMNs that transmigrate across the endothelial layer in response to chemokines produced by *Francisella*-infected ATII cells are also functionally inhibited. Regardless, it is clear that, in addition to providing an early replicative niche for *Francisella*, ATII cells have the potential to play a vital role in initiation of inflammatory immune responses and recruitment of key immune cells.

The mechanisms exploited by *Francisella* for uptake and growth in these non-macrophage cell types – as well as the immune mechanisms that ultimately control this growth – are only beginning to be understood. Thus far it is clear that LVS uses host processes for invasion of murine ATII cells, and – similar to its growth in macrophages – escapes the initial phagosome to replicate in the cytoplasm (Craven et al., 2008). LVS infection of the human ATII cell line A549 resulted in up-regulation of the antimicrobial  $\beta$ -defensin molecule hBD-2, but not hBD-3, the  $\beta$ -defensin that had the most potent anti-*Francisella* activity in a cell-free system (Han et al., 2008). Therefore, *Francisella* avoids eliciting detrimental antimicrobial mechanisms in resting ATII cells. However, the combined action of recombinant IFN- $\gamma$  and IL-17A limited LVS growth in a murine ATII cell line *in vitro* (Cowley et al., 2010), and thus ATII cells can be activated to produce antimicrobial activity against *Francisella*.

## NEUTROPHILS

Another important cell type that responds early to *Francisella* infection is the neutrophil. Neutrophils are key innate immune cells that use toxic ROS, cationic peptides, and degradative enzymes to kill ingested pathogens. In particular, the multicomponent enzyme NADPH oxidase, which catalyzes the conversion of molecular oxygen to superoxide anions, is a primary antimicrobial weapon in the neutrophil arsenal. Interestingly, although LVS and SchuS4 were readily phagocytosed by human neutrophils *in vitro*, they inhibited NADPH oxidase assembly and the associated production of ROS (McCaffrey and Allen, 2006; McCaffrey et al., 2010). Further, instead of being killed by neutrophils, *Francisella* escaped from the phagosome and persisted in the neutrophil cytosol (McCaffrey and Allen, 2006). Thus, instead of killing *Francisella*, neutrophils appear to provide a safe – if not replicative – niche for the organism. Nonetheless, in mice the *in vivo* importance of neutrophils in defense against systemic *Francisella* infection is clear: neutrophil-depleted mice are highly susceptible to otherwise sublethal parenteral LVS infections, succumbing quickly to an overwhelming disseminated infection (Sjostedt et al., 1994; Elkins et al., 1996; Conlan et al., 2002a). The inability of neutrophils to kill intracellular *Francisella* suggests that

their critical contribution to early survival of systemic infection may lie in their ability to secrete cytokines and chemokines that recruit other important effector cells to the site of infection.

In contrast, the effect of neutrophil depletion on pulmonary LVS infection was much less striking than that noted for parenterally infected mice, with only a minor increase in bacterial burdens in the livers when using a dose just above the LD<sub>50</sub> (Conlan et al., 2002a). Regardless, neutrophils are clearly actively recruited to *Francisella*-infected lungs: recent studies show that neutrophils constitute as much as 50% of the *Francisella*-infected cells in the lungs of mice 3 days after pulmonary LVS and SchuS4 infection (Hall et al., 2008), and depend at least partially on IL-17A for their early recruitment to the lungs (Lin et al., 2009; Cowley et al., 2010). However, excessive recruitment of neutrophils to the lung appears to contribute to *Francisella* pathogenesis: mice deficient for matrix metalloproteinase 9 – which generates neutrophil chemoattractants via cleavage of the extracellular matrix – exhibited reduced neutrophil numbers in the lungs after LVS pulmonary infection, and an associated reduction in bacterial burden that was accompanied by increased survival (Malik et al., 2007). Thus, the role of neutrophils in *Francisella* infection is likely to be a fine balance between aiding in control of infection and exacerbation of pathology.

## MAST CELLS

Mast cells are classically known for their involvement in allergic conditions associated with type I hypersensitivity reactions (Geha, 2003). However, recent data has revealed an unexpected and intriguing role for mast cells and IL-4 in control of respiratory *Francisella* infection. Mast cell-deficient mice were much more susceptible to pulmonary LVS infection than WT mice, exhibiting diminished production of IL-4 in the lungs (Ketavarapu et al., 2008). Further, IL-4-deficient mice were slightly more susceptible to LVS pulmonary infection. *In vitro*, mast cells inhibited LVS intramacrophage growth in a manner that was dependent on IL-4 (Ketavarapu et al., 2008). Overall, these data suggest that mast cells are capable of IL-4-dependent inhibition of LVS growth in macrophages, a phenomenon that was associated with increased macrophage cellular ATP levels and co-localization of LVS with acidified organelles (Rodriguez et al., 2010).

## NK CELLS

Numerous studies have shown that NK cell-deficient mice are not more susceptible to IN or ID LVS infection than fully immunocompetent mice (Lopez et al., 2004; Duckett et al., 2005; Bokhari et al., 2008), although clear conclusions from these studies are hampered by the inability to fully deplete mice of NK cells *in vivo*. Despite this limitation, it is clear that NK cells are important producers of IFN- $\gamma$  during primary LVS infection initiated via both the ID and IN routes. During the first 96 h after an IN LVS infection, a subset of CD11b<sup>+</sup>DX5<sup>+</sup>NK1.1<sup>+</sup> cells were primarily responsible for IFN- $\gamma$  production in the lungs and livers (Lopez et al., 2004; Bokhari et al., 2008), while NK1.1<sup>+</sup> cells were a large proportion of the IFN- $\gamma$  producers in the spleens and livers of mice for the first 5–7 days after an ID LVS infection (De Pascalis et al., 2008). The NK1.1<sup>+</sup> cell types that produce IFN- $\gamma$  in response to LVS infection were quite heterogeneous, and could be sub-divided into populations phenotypically reminiscent of NK T cells and “NK DCs” (Bokhari et al., 2008; De Pascalis et al., 2008).

Further studies investigating the role of NK cell production of IFN- $\gamma$  in *Francisella* infection have revealed some of its downstream impacts. For example, human monocyte production of IL-23 in responses to *Francisella* infection induced NK cells to produce IFN- $\gamma$ ; this IFN- $\gamma$  subsequently up-regulated monocyte production of IL-23 and IL-12p70, establishing NK cells at the center of a positive feedback loop for IL-23 and IFN- $\gamma$  production (Butchar et al., 2007, 2008b). In addition, NK cell production of IFN- $\gamma$  was critical for hepatic granuloma formation during IN LVS infection; depletion of NK cells – although not lethal to the mice – resulted in “leaky” granulomas that poorly contained the infection (Bokhari et al., 2008).

Overall, although NK1.1<sup>+</sup> cells clearly respond vigorously to early *Francisella* infection, much of their contribution identified thus far relates to IFN- $\gamma$  production; the role of the lytic activities of NK cells has not been studied directly. Since NK1.1<sup>+</sup> cells are not the only innate immune cells capable of producing IFN- $\gamma$  during these early critical time points (other cell types identified included DCs, PMNs, and macrophages; De Pascalis et al., 2008), it is likely that compensation by these other cells explains the dispensability of NK cells during survival of primary sublethal LVS infection. Indeed, mice depleted of NK cells during primary IN LVS infection exhibited only a 50% decrease in serum IFN- $\gamma$  as compared to their WT counterparts (Bokhari et al., 2008).

## ELEMENTS OF THE ADAPTIVE IMMUNE RESPONSE

Elucidation of the mechanisms involved in protection against intracellular pathogens is critical for successful vaccine development. Adaptive immune responses typically develop over a longer time frame than that of innate immunity, first requiring activation and clonal expansion of antigen-specific B and T cells. The resulting memory T and B cells respond rapidly to a second exposure to their cognate antigen, thus forming the basis of vaccine-induced immunity. For many intracellular pathogens, cellular immune responses have received the greatest attention; organisms are sequestered within cells and relatively inaccessible to antibodies, and as discussed above, serum antibody levels often do not correlate with protection. Thus T cell mechanisms including cytokine production and cytotoxicity are logical candidates for effecting pathogen eradication. However, recent data demonstrating significant extracellular phases for *Francisella in vivo* (Forestal et al., 2007; Yu et al., 2008), as well as a clear contribution of B cell-mediated functions to protection against secondary infections with *Francisella* strains of lower virulence, are leading to a new appreciation for how a combination of both B and T cell responses contribute to protective immunity against *Francisella* (for an overview, refer to **Figure 1**).

### B LYMPHOCYTES AND ANTIBODIES

As discussed above, while specific antibodies are clearly made during *Francisella* infection and following vaccination, their contribution to protection may be relatively limited, at least in isolation. Murine studies have used both passive transfer of immune sera and/or purified antibodies, as well as genetically deficient mice, to elucidate the role of B cells and antibodies in resistance to *Francisella* infection. Older studies demonstrated that immune serum transfer to naive animals does not confer protection against the highly virulent Type A *Francisella* strains (Thorpe and Marcus, 1967),

although transfer of anti-LVS or anti-*Francisella* LPS antibodies conferred partial protection against LVS and the less virulent Type B *Francisella* challenges (Fortier et al., 1991; Fulop et al., 1995, 2001; Conlan et al., 2002b; Stenmark et al., 2003; Kirimanjeshwara et al., 2007; Lavine et al., 2007). Similarly, efforts to stimulate protective immunity in mice through vaccination with *Francisella* LPS or its protein-conjugated derivatives have only met with success following challenge with LVS or the less virulent Type B *Francisella* (Fulop et al., 1995; Conlan et al., 2002b, 2003; Kieffer et al., 2003; Cole et al., 2009).

Although administration of inactivated preparations of *Francisella* or its components have historically been unable to confer protective immunity to virulent *Francisella* challenge, recent studies have challenged this dogma; further, some of these strategies are antibody-dependent. Vaccination with inactivated *Francisella* preparations augmented by co-administration with immunostimulatory compounds can induce antibody-dependent protection against challenge with the less virulent LVS. Mice given an IN vaccination of killed LVS and IL-12 survived a subsequent lethal IN LVS challenge in an IgA-dependent manner (Baron et al., 2007). Similarly, mice administered heat-killed LVS IP alongside an IL-12 expressing viral vector survived a high dose lethal IP LVS challenge in a manner that was mediated by antibodies (Lavine et al., 2007). The ability of IL-12 administration to augment humoral immunity and protect against virulent *Francisella* challenge remains to be explored. Further, mice vaccinated several times IP with *Francisella* outer membrane proteins or ethanol-inactivated LVS were significantly protected against subsequent IN Type A *F. tularensis* challenge (~40–50% survival; Huntley et al., 2008). Intramuscular immunization of mice with killed LVS in conjunction with immunostimulatory complexes (ISCOMs) admixed with CpG protected 40% of mice against a low dose SC challenge with SchuS4 (Eyles et al., 2008). Further, intranasal immunization of mice with inactivated LVS and the mucosal adjuvant cholera toxin B subunit resulted in substantial protection against lethal IN LVS challenge, and partial protection against IN SchuS4 challenge (Bitsaktsis et al., 2009). However, in this case the presence of a mucosal adjuvant augmented Th1-type responses, such that the protection mediated against LVS challenge was fully operative in BKO mice; thus, the observed protection was not actually mediated by B cells or antibodies. Overall, it appears that antibody-mediated immune responses generated by immunization with live or killed LVS or antigenic *Francisella* preparations are, at best, partially protective against virulent strains of *Francisella*, and that T cell functions are necessary to achieve optimal protection. Interestingly, however, antisera from mice immunized IN with virulent SchuS4 and subsequently rescued by levofloxacin treatment was able to protect ~90% of naive mice against a lethal SchuS4 IN challenge (Klimpel et al., 2008).

A recent study reveals an interesting mechanism by which virulent *Francisella* may evade the protective effects of anti-*Francisella* antibodies. The highly virulent Type A strain SchuS4 – but not LVS – can directly bind plasmin, a host serine protease that degrades opsonizing antibodies, thus inhibiting antibody-mediated uptake of SchuS4 by macrophages (Crane et al., 2009). Importantly, antibody-opsonized SchuS4 elicited increased production of TNF- $\alpha$  and IL-6 from macrophages, an effect that was reduced by the addition of plasmin. Thus, the ability of SchuS4 to bind plasmin likely contributes to

its capacity to evade the host antibodies response. Further, the *in vivo* protective effects provided by adoptively transferred immune serum against IN LVS challenge were dependent upon the Fc $\gamma$  receptor and alveolar macrophages, indicating a role for opsonophagocytosis in antibody-mediated protection to LVS (Kirimanjeswara et al., 2007). Control of LVS growth by IFN- $\gamma$ -treated alveolar macrophages was significantly greater when the bacteria had been serum opsonized prior to uptake (Kirimanjeswara et al., 2007). Since LVS does not bind plasmin, it is subject to opsonophagocytosis by macrophages that are stimulated to increase their production of pro-inflammatory mediators and control intracellular growth more potently. These phenomena may at least partially explain the aforementioned ability of adoptively transferred sera to protect against LVS, but not SchuS4, challenges.

A novel role for “innate immune B cells” in immunity to *Francisella* has emerged in the last several years. Called B-1 lymphocytes, these cells are primarily located in the pleural cavity, intestinal mucosa, and the spleen of mice, and rapidly produce antibodies against T-independent antigens. In the *Francisella* murine infection model, these cells mediate a very rapid antibody response within 2–3 days of LVS or Ft-LPS vaccination. The B-1a B cell response and resulting antibody secretion provides substantial protection against moderate lethal LVS challenges administered IP, and was not dependent on the presence of T cells (Dreisbach et al., 2000; Cole et al., 2009). In the Ft-LPS-vaccinated mice, B1a cells proliferated in the spleen, and differentiated into plasma cells that produced Ft-LPS-specific antibodies that were detectable in the sera by days 3–4 after immunization. This protection did not depend on TLR4 and was not elicited by LVS lipid A, indicating that the epitope recognized by B1a cells is LVS O antigen. Whether these rapid B1a protective responses provide immunity to *Francisella* challenge via other routes of infection remains to be determined. Nonetheless, the discovery that the resultant anti-Ft-LPS antibodies were detectable at low levels in the serum for months after immunization suggests that they have the capacity to contribute to longer-term immune responses, in addition to rapid immunity.

It is important to note that the contributions of B cells to primary and secondary *Francisella* infections may be quite different. B cell-deficient mice (BKO) given a primary ID LVS infection controlled bacterial growth with kinetics similar to WT mice with a minimal impact on overall susceptibility, and similarly, BKO mice administered a primary low dose aerosol LVS infection also readily survived (Elkins et al., 1999; Chen et al., 2004). In contrast, LVS-vaccinated BKO mice were significantly more susceptible than their WT counterparts to IP LVS secondary challenge, in a manner that could be readily rescued by transfer of immune splenic B cells but not immune sera (Elkins et al., 1999). Thus, in addition to revealing a more significant role for B cells in secondary as compared to primary infection, these results further suggest that part but not all of the contribution of B cells to protective immunity during secondary LVS challenge is antibody-mediated. The role of other functions of B cells, such as production of cytokines and chemokines and antigen presentation, remains to be fully explored. Interestingly, recent evidence indicates that *Francisella* can grow inside B cells, ultimately inducing apoptosis of the infected cells (Krocova et al., 2008). Thus the potential for *Francisella* to subvert B cell functions from within remains an interesting avenue for future research.

## T LYMPHOCYTES: T CELL SUBPOPULATIONS

Although B cells and their products have significant roles in protective immunity to *Francisella*, optimal protection to *Francisella* infection clearly requires T cell-mediated immunity. Mice deficient in T cells (such as *nu/nu* or  $\alpha/\beta$  TCR-deficient mice) initially control a primary sublethal parenteral LVS infection, but the mice maintain high bacterial organ burdens and ultimately succumb after approximately a month. Both CD4<sup>+</sup> and CD8<sup>+</sup> T cells are sufficient to resolve this infection, as mice depleted of either population individually clear the bacteria from the tissues. In contrast, mice simultaneously depleted of both CD4<sup>+</sup> and CD8<sup>+</sup> T cells survive – but do not clear – LVS infection, instead developing a long-term chronic infection for many months that is characterized by steady levels of bacteria in the organs of the reticuloendothelial system. Control of LVS infection in these depleted mice has been attributed to an unusual CD4<sup>+</sup>CD8<sup>+</sup>NK1.1<sup>+</sup>TCR $\alpha\beta$ <sup>+</sup>Thy1.2<sup>+</sup>“DN” T cell population. Enriched populations of these cells potently control LVS intramacrophage growth *in vitro* (Cowley et al., 2005). Thus, a variety of T cells contribute to control of primary parenteral LVS infection in mice, although only CD4<sup>+</sup> and CD8<sup>+</sup>  $\alpha\beta$  T cells have the ability to fully resolve the infection.

The role of T cells in the control and clearance of murine primary sublethal respiratory LVS infection is considerably less well studied than parenteral infection. Mice simultaneously depleted of CD4<sup>+</sup> and CD8<sup>+</sup> T cells and infected with LVS IN also develop a long-term chronic infection, indicating that one or both of these T cell subsets are necessary for clearance of pulmonary infections (Cowley et al., 2010). However, the requirement for the individual T cell subsets, or  $\alpha\beta$  TCR<sup>+</sup> T cells as a group, has not been systematically studied in pulmonary LVS infection. Since fully immunocompetent mice die following both parenteral and respiratory primary infections with virulent *Francisella*, it is not surprising that infected mice deficient in T cells die at the same time (Chen et al., 2004; Wu et al., 2005). Interestingly, lethal murine pulmonary infection with virulent type A *F. tularensis* has been shown to result in thymic atrophy and loss of CD4<sup>+</sup>CD8<sup>+</sup> thymocytes (Chen et al., 2005a), whereas mice given a lethal pulmonary *F. novicida* infection exhibited a profound depletion of  $\alpha\beta$  T cells in their lungs that was associated with apoptosis (Sharma et al., 2009). Overall, these data suggest that primary lethal pulmonary *Francisella* infections share the ability to undermine the development and/or function of T cell-mediated immune responses.

## T LYMPHOCYTES: EFFECTOR MECHANISMS

Efforts to determine the T cell mechanisms that contribute to defense against *Francisella* infection have revealed a small number of key cytokines that are produced by responding T cells. CD4<sup>+</sup>, CD8<sup>+</sup>, and DN T cells in the lungs of mice given a primary sublethal LVS pulmonary infection produce IFN- $\gamma$  and IL-17A (Woolard et al., 2008; Cowley et al., 2010). Correspondingly, mice deficient in either IFN- $\gamma$  or IL-17A exhibit increased susceptibility to primary LVS pulmonary and ID infections (Lin et al., 2009; Cowley et al., 2010; Markel et al., 2010). However, since both cytokines are also produced by innate immune cells (see above), it is difficult to determine the relative importance of production of these factors by T cells versus that of other cell types during primary *in vivo* infection. Greater success on this front has been achieved through the use of

an *in vitro* co-culture system, which directly measures the ability of LVS-immune T cells to control LVS intramacrophage growth. Using this system, it is apparent that IFN- $\gamma$  and TNF- $\alpha$  contribute to the ability of all three T cell subsets to control LVS intramacrophage growth. However, the different T cell subsets utilize these two factors differentially: LVS-immune CD4<sup>+</sup> T cells exhibited the greatest reliance on IFN- $\gamma$  to control LVS growth, while LVS-immune CD8<sup>+</sup> and DN T cells displayed a greater degree of IFN- $\gamma$ -independence (Cowley and Elkins, 2003). In contrast, LVS-immune CD4<sup>+</sup> T cells did not require TNF- $\alpha$  to control LVS intramacrophage growth, while CD8<sup>+</sup> T cells were almost completely reliant on TNF- $\alpha$  production (Cowley et al., 2007). Further, LVS-immune CD8<sup>+</sup> T cells were capable of utilizing the membrane-bound form of TNF- $\alpha$ , in the absence of soluble TNF- $\alpha$ , to execute full control of LVS growth *in vitro* (Cowley et al., 2007).

Secondary immune responses to LVS vaccination in mice have typically been studied by administering either IP, IV, or pulmonary *Francisella* challenges at doses that are lethal for a naive mouse. For secondary LVS IP challenges, all three  $\alpha\beta$  T cell subsets – CD4<sup>+</sup>, CD8<sup>+</sup>, and DN T cells – are sufficient individually for survival and clearance of an LVS infection. However, mice with only DN T cells (i.e., simultaneously depleted of both CD4<sup>+</sup> and CD8<sup>+</sup> T cells) eradicated the infection more slowly. In contrast, full resistance to virulent *F. tularensis* pulmonary secondary challenges of vaccinated mice requires both CD4<sup>+</sup> and CD8<sup>+</sup> T cells, as depletion of either T cell subset significantly reduces survival (Conlan et al., 2005; Wu et al., 2005; Bakshi et al., 2008).

Elucidation of immune T cell effector mechanisms that promote survival of secondary challenges remains an ongoing area of active investigation. Such information is likely to be critical for derivation of protective correlates of immunity. Mice administered neutralizing anti-TNF- $\alpha$  antibodies during lethal IV LVS secondary challenge were highly susceptible to the infection, exhibiting bacterial burdens that exceeded those of mice similarly treated with anti-IFN- $\gamma$  antibodies (Sjostedt et al., 1996). However, mice genetically engineered to produce only the membrane-bound form of TNF- $\alpha$  (and not the soluble form), were resistant to a high lethal secondary IP LVS challenge and generated similar numbers of CD44hi-responding T cells in their spleens. These data suggest that membrane TNF- $\alpha$  is sufficient for the generation of activated responding memory T cells (Cowley et al., 2007). In contrast, mice treated with anti-IFN- $\gamma$  Abs at the time of secondary IP LVS challenges were only able to survive the lowest challenge doses, and T cells harvested from vaccinated IFN- $\gamma$ -deficient mice failed to control LVS intramacrophage growth *in vitro*, indicating that IFN- $\gamma$  is required for successful priming of LVS-immune T cells (Elkins et al., 2010). In addition to clear roles for IFN- $\gamma$  and TNF- $\alpha$ , one recent study found that vaccine efficacy against SchuS4 challenge best correlated with pulmonary levels of IL-17 (Shen et al., 2010). Further, antibody neutralization of IL-17A during *in vivo* secondary challenge slightly enhanced SchuS4 growth in mouse lungs, indicating that IL-17A may participate in vaccine-induced immunity to *Francisella* (Shen et al., 2010).

Classic cytotoxic T cell mechanisms do not appear to play a significant role in survival of primary or secondary LVS infections in mice, and similarly do not contribute to the ability of LVS-immune murine T cells to control LVS intramacrophage growth *in vitro*

(Cowley, manuscript in preparation). However, the recent finding that *Francisella* is susceptible to killing by granulysin, a lytic antimicrobial peptide component of human – but not mouse – cytolytic granules, suggests that granule cytotoxicity may be an effective part of the human T and NK cell arsenal that cannot be assessed in the mouse model (Endsley et al., 2009).

The study of T cell responses during *Francisella* infection has been hampered by a paucity of information on the precise epitopes recognized by antigen-specific T cells, and a corresponding lack of tools such as tetramers to probe T cell biology. Efforts to identify protein epitopes recognized by T cells during *Francisella* infection have only recently begun to come to fruition. To date, T cell hybridomas, bioinformatics, proteomics, and “immunoinformatics” have been applied to identify several *Francisella* T cell epitopes in both mice and humans (McMurry et al., 2007; Valentino and Frelinger, 2009; Valentino et al., 2009; Yu et al., 2010). One murine CD4<sup>+</sup> T cell epitope has been identified as amino acids 86–99 of the lipoprotein Tul4 (Valentino et al., 2009). Constituting as much as 20% of the responding splenic CD4<sup>+</sup> T cells at the height of an ID LVS infection, this epitope appears to be immunodominant in C57Bl/6 mice (Valentino et al., 2009). Other murine studies have identified the LVS proteins GroEL, KatG, and bacterioferritin (Bfr) as immunostimulatory during *in vitro* recall assays with splenocytes harvested from LVS-vaccinated BALB/c mice, although the exact epitopes present in these proteins have yet to be identified (Lee et al., 2006). The identification of human epitopes has been approached largely through bioinformatics analyses to select candidate promiscuous or supertype CD4<sup>+</sup> and CD8<sup>+</sup> epitopes in the SchuS4 genome; this effort yielded a large number of candidate epitopes that induced low levels of IFN- $\gamma$  production by PBMCs from former tularemia patients (McMurry et al., 2007). Immunization with a pool of 13 of these epitopes provided some protective immunity against a two or five LD<sub>50</sub> IT LVS challenge in HLA class II (DRB1\*0401) transgenic mice (Gregory et al., 2009), but this effort utilized a difficult vaccination regimen. Further studies to identify alternate vehicles or routes of vaccination will no doubt be necessary to develop a peptide-based vaccination approach that is feasible for humans.

Despite apparently productive interactions between T cells and *Francisella*-infected macrophages *in vitro*, infected macrophages also have the capacity to directly inhibit T cell responses *in vitro*. PGE2 production by BMDMs infected with a high multiplicity of infection of LVS inhibited proliferation of T cell hybridomas specific for SIINFEKL and hen egg lysozyme antigens, skewing the T cell responses from IL-2 to IL-5 production (Woolard et al., 2007). In addition, macrophage production of a PGE2-dependent factor modulated antigen presentation by LVS-infected macrophages via ubiquitination and degradation of macrophage MHC class II molecules (Wilson et al., 2009). Finally, *F. novicida*-infected macrophages inhibited expression of the IFN- $\gamma$  receptor and diminished the ability of ovalbumin-specific T cells to produce IL-2 in response to their cognate antigen (Roth et al., 2009). The *in vivo* consequences of these phenomena remain to be fully explored, although inhibition of the PGE2-producing enzyme cyclooxygenase in mice during LVS pulmonary infection increased the number of IFN- $\gamma$ -producing T cells and decreased the bacterial burden in the lungs. Thus lung PGE2 production may have a significant immunosuppressive impact *in vivo*.

Similar to murine *Francisella* infections and as discussed above, human CD4<sup>+</sup> and CD8<sup>+</sup> T cell responses have been demonstrated. PBMCs from LVS vaccines and naturally infected tularemia patients produce typical Th1-type cytokines such as IL-2, IFN- $\gamma$ , and TNF- $\alpha$  upon *ex vivo* re-stimulation with LVS or its antigens (Karttunen et al., 1991; Surcel et al., 1991; Salerno-Goncalves et al., 2009). Further, memory CD4<sup>+</sup> and CD8<sup>+</sup> T cells in re-stimulated PBMCs from LVS-vaccinated volunteers also produce the Th17 cytokines IL-17 and IL-22 (Paranavitana et al., 2010). One recent study further investigated the phenotype of LVS-induced recall responses in the PBMCs of tularemia patients and LVS vaccines, revealing that CD4<sup>+</sup> and CD8<sup>+</sup> T cell responders (as defined by IFN- $\gamma$ -production and/or proliferation) largely exhibited an effector memory phenotype, and expressed cell surface markers that were indicative of cytolytic potential and the ability to home to both mucosal and non-mucosal sites (Salerno-Goncalves et al., 2009). These effector memory cells were long-lived and in some cases detected greater than 25 years after primary pneumonic tularemia.

In addition to CD4<sup>+</sup> and CD8<sup>+</sup> T cell responses, it is interesting to note that  $\gamma/\delta$  T cells respond vigorously to *Francisella* infection in humans. The V $\gamma$ 9/V $\delta$ 2  $\gamma/\delta$  T cell subset is known for its ability to specifically respond to pathogen-produced non-peptidic phosphoesters known collectively as “phosphoantigens.” In tularemia patients, the V $\gamma$ 9/V $\delta$ 2 subset expanded to constitute as much as 30.5% of all CD3<sup>+</sup> cells in human peripheral blood within the first 7 days after the onset of symptoms (Poquet et al., 1998). These cells remained elevated for at least a month, and persisted in some individuals for as long as a year after infection (Kroca et al., 2000). Acellular extracts from a variety of *Francisella* strains, including LVS, contained phosphoantigens that activated V $\gamma$ 9/V $\delta$ 2 T cell expansion and effector functions in human PBMCs. Curiously, despite the existence of activating phosphoantigens in LVS extracts, LVS vaccines do not exhibit the same V $\gamma$ 9/V $\delta$ 2 T cell subset expansion as tularemia patients. Since mice do not express a  $\gamma/\delta$  T cell receptor that is homologous to V $\gamma$ 9/V $\delta$ 2, it has not been possible to further explore this phenomenon in the murine model of infection. To date, only a small number of studies have addressed the role of  $\gamma/\delta$  T cells in murine tularemia. Mice deficient for the  $\gamma/\delta$  T cell receptor did not exhibit notable increased susceptibility to primary sublethal ID or IN LVS

infection, and only a small but detectable increase in susceptibility was evident upon secondary IP challenge (Yee et al., 1996; Markel et al., 2010). However, studies using the primary sublethal pulmonary infection model revealed that these cells respond in the lungs of LVS-infected mice by producing IL-17A (Lin et al., 2009; Markel et al., 2010). Thus, overall it appears that any responses provided by  $\gamma/\delta$  T cells in the murine model are not essential for survival of LVS infection.

## CONCLUSIONS AND PERSPECTIVES

In the last 5 years, abundant new findings have added to an already rich literature regarding *Francisella* pathogenesis and immunity. Of necessity, some of it has been more descriptive than hypothesis-driven, in reporting new genetic systems, results of genomic mining, advances in establishing and characterizing novel animal models, and in cataloging responding host cell types and mediators. But the tools developed are now poised to have payoffs not only for understanding of human infection with *Francisella per se*, but for insights into the biology of intracellular pathogens in general. As an experimental model, *Francisella* is unique in establishing productive infection in a huge variety of insects and mammals by many routes. Between this convenient biology and the plethora of experimental options now available, the field is well poised to perform detailed mechanistic studies. To do so, immunologists, long biased toward studies in mice, may need to make room in their thinking and their animal colonies for species with advantages in modeling human infection, such as rats. The *Francisella* models seem to be particularly attractive for tackling some of the current themes regarding immunity to pathogens: comparing similarities and differences in systemic or mucosal immunity; understanding the tension between pathogen-induced immunosuppression and host immunoresponsiveness; appreciating the ongoing interplay between rapid innate reactions and later specific immunity; and getting past a tendency to think of adaptive immune responses as either antibody-centric or T cell dominated, when instead both may complement, augment, and regulate each other. Collectively, we expect studies on immunity to *Francisella* to continue to be exciting, novel, and perhaps pivotal in achieving a critical public health goal: the search for predictive correlates of protective immunity to intracellular pathogens.

## REFERENCES

- Abplanalp, A. L., Morris, I. R., Parida, B. K., Teale, J. M., and Berton, M. T. (2009). TLR-dependent control of *Francisella tularensis* infection and host inflammatory responses. *PLoS ONE* 4, e7920. doi: 10.1371/journal.pone.0007920
- Ahlund, M. K., Ryden, P., Sjöstedt, A., and Stöven, S. (2010). Directed screen of *Francisella novicida* virulence determinants using *Drosophila melanogaster*. *Infect. Immun.* 78, 3118–3128.
- Andersson, H., Hartmanova, B., Back, E., Eliasson, H., Landfors, M., Naslund, L., Ryden, P., and Sjöstedt, A. (2006a). Transcriptional profiling of the peripheral blood response during tularemia. *Genes Immun.* 7, 503–513.
- Andersson, H., Hartmanova, B., Kuolee, R., Ryden, P., Conlan, W., Chen, W., and Sjöstedt, A. (2006b). Transcriptional profiling of host responses in mouse lungs following aerosol infection with type A *Francisella tularensis*. *J. Med. Microbiol.* 55, 263–271.
- Anthony, L. D., Burke, R. D., and Nano, F. E. (1991). Growth of *Francisella* spp. in rodent macrophages. *Infect. Immun.* 59, 3291–3296.
- Anthony, L. S., Morrissey, P. J., and Nano, F. E. (1992). Growth inhibition of *Francisella tularensis* live vaccine strain by IFN-gamma-activated macrophages is mediated by reactive nitrogen intermediates derived from L-arginine metabolism. *J. Immunol.* 148, 1829–1834.
- Ashtekar, A. R., Zhang, P., Katz, J., Deivanayagam, C. C., Rallabhandi, P., Vogel, S. N., and Michalek, S. M. (2008). TLR4-mediated activation of dendritic cells by the heat shock protein DnaK from *Francisella tularensis*. *J. Leukoc. Biol.* 84, 1434–1446.
- Bakshi, C. S., Malik, M., Mahawar, M., Kirimanjeswara, G. S., Hazlett, K. R., Palmer, L. E., Furie, M. B., Singh, R., Melendez, J. A., Sellati, T. J., and Metzger, D. W. (2008). An improved vaccine for prevention of respiratory tularemia caused by *Francisella tularensis* SchuS4 strain. *Vaccine* 26, 5276–5288.
- Bar-Haim, E., Gat, O., Markel, G., Cohen, H., Shafferman, A., and Velan, B. (2008). Interrelationship between dendritic cell trafficking and *Francisella tularensis* dissemination following airway infection. *PLoS Pathog.* 4, e1000211. doi: 10.1371/journal.ppat.1000211
- Baron, S. D., Singh, R., and Metzger, D. W. (2007). Inactivated *Francisella tularensis* live vaccine strain protects against respiratory tularemia by intranasal vaccination in an immunoglobulin A-dependent fashion. *Infect. Immun.* 75, 2152–2162.
- Ben Nasr, A., Haithcoat, J., Masterson, J. E., Gunn, J. S., Eaves-Pyles, T., and Klimpel, G. R. (2006). Critical role for serum opsonins and complement receptors CR3 (CD11b/CD18) and CR4 (CD11c/CD18) in phagocytosis of *Francisella tularensis* by human dendritic cells



- (DC): uptake of *Francisella* leads to activation of immature DC and intracellular survival of the bacteria. *J. Leukoc. Biol.* 80, 774–786.
- Ben Nasr, A., and Klimpel, G. R. (2008). Subversion of complement activation at the bacterial surface promotes serum resistance and opsonophagocytosis of *Francisella tularensis*. *J. Leukoc. Biol.* 84, 77–85.
- Bitsaktsis, C., Rawool, D. B., Li, Y., Kurkure, N. V., Iglesias, B., and Gosselin, E. J. (2009). Differential requirements for protection against mucosal challenge with *Francisella tularensis* in the presence versus absence of cholera toxin B and inactivated *F. tularensis*. *J. Immunol.* 182, 4899–4909.
- Bokhari, S. M., Kim, K. J., Pinson, D. M., Slusser, J., Yeh, H. W., and Parmely, M. J. (2008). NK cells and gamma interferon coordinate the formation and function of hepatic granulomas in mice infected with the *Francisella tularensis* live vaccine strain. *Infect. Immun.* 76, 1379–1389.
- Bonquist, L., Lindgren, H., Golovliov, I., Guina, T., and Sjostedt, A. (2008). MglA and Igl proteins contribute to the modulation of *Francisella tularensis* live vaccine strain-containing phagosomes in murine macrophages. *Infect. Immun.* 76, 3502–3510.
- Bosio, C. M., Bielefeldt-Ohmann, H., and Belisle, J. T. (2007). Active suppression of the pulmonary immune response by *Francisella tularensis* Schu4. *J. Immunol.* 178, 4538–4547.
- Bosio, C. M., and Dow, S. W. (2005). *Francisella tularensis* induces aberrant activation of pulmonary dendritic cells. *J. Immunol.* 175, 6792–6801.
- Bosio, C. M., and Elkins, K. L. (2001). Susceptibility to secondary *Francisella tularensis* live vaccine strain infection in B-cell-deficient mice is associated with neutrophilia but not with defects in specific T-cell-mediated immunity. *Infect. Immun.* 69, 194–203.
- Bublitz, D. C., Noah, C. E., Benach, J. L., and Furie, M. B. (2010). *Francisella tularensis* suppresses the proinflammatory response of endothelial cells via the endothelial protein C receptor. *J. Immunol.* 185, 1124–1131.
- Burke, D. S. (1977). Immunization against tularemia: analysis of the effectiveness of live *Francisella tularensis* vaccine in prevention of laboratory-acquired tularemia. *J. Infect. Dis.* 135, 55–60.
- Busse, H. J., Huber, B., Anda, P., Escudero, R., Scholz, H. C., Seibold, E., Spletstoeser, W. D., and Kampfer, P. (2010). Objections to the transfer of *Francisella novicida* to the subspecies rank of *Francisella tularensis* – response to Johansson et al. *Int. J. Syst. Evol. Microbiol.* 60, 1718–1720.
- Butchar, J. P., Cremer, T. J., Clay, C. D., Gavrilin, M. A., Wewers, M. D., Marsh, C. B., Schlesinger, L. S., and Tridandapani, S. (2008a). Microarray analysis of human monocytes infected with *Francisella tularensis* identifies new targets of host response subversion. *PLoS ONE* 3, e2924. doi: 10.1371/journal.pone.0002924
- Butchar, J. P., Parsa, K. V., Marsh, C. B., and Tridandapani, S. (2008b). IFN-gamma enhances IL-23 production during *Francisella* infection of human monocytes. *FEBS Lett.* 582, 1044–1048.
- Butchar, J. P., Rajaram, M. V., Ganesan, L. P., Parsa, K. V., Clay, C. D., Schlesinger, L. S., and Tridandapani, S. (2007). *Francisella tularensis* induces IL-23 production in human monocytes. *J. Immunol.* 178, 4445–4454.
- Chase, J. C., and Bosio, C. M. (2010). The presence of CD14 overcomes evasion of innate immune responses by virulent *Francisella tularensis* in human dendritic cells in vitro and pulmonary cells in vivo. *Infect. Immun.* 78, 154–167.
- Chase, J. C., Celli, J., and Bosio, C. M. (2009). Direct and indirect impairment of human dendritic cell function by virulent *Francisella tularensis* Schu4. *Infect. Immun.* 77, 180–195.
- Chen, W., Kuolee, R., Austin, J. W., Shen, H., Che, Y., and Conlan, J. W. (2005a). Low dose aerosol infection of mice with virulent type A *Francisella tularensis* induces severe thymus atrophy and CD4<sup>+</sup> CD8<sup>+</sup> thymocyte depletion. *Microb. Pathog.* 39, 189–196.
- Chen, W., Kuolee, R., Shen, H., Busa, M., and Conlan, J. W. (2005b). Toll-like receptor 4 (TLR4) plays a relatively minor role in murine defense against primary intradermal infection with *Francisella tularensis* LVS. *Immunol. Lett.* 97, 151–154.
- Chen, W., KuoLee, R., Shen, H., and Conlan, J. W. (2004). Susceptibility of immunodeficient mice to aerosol and systemic infection with virulent strains of *Francisella tularensis*. *Microb. Pathog.* 36, 311–318.
- Chen, W., Shen, H., Webb, A., KuoLee, R., and Conlan, J. W. (2003). Tularemia in BALB/c and C57BL/6 mice vaccinated with *Francisella tularensis* LVS and challenged intradermally, or by aerosol with virulent isolates of the pathogen: protection varies depending on pathogen virulence, route of exposure, and host genetic background. *Vaccine* 21, 3690–3700.
- Clay, C. D., Soni, S., Gunn, J. S., and Schlesinger, L. S. (2008). Evasion of complement-mediated lysis and complement C3 deposition are regulated by *Francisella tularensis* lipopolysaccharide O antigen. *J. Immunol.* 181, 5568–5578.
- Clemens, D. L., Lee, B. Y., and Horwitz, M. A. (2005). *Francisella tularensis* enters macrophages via a novel process involving pseudopod loops. *Infect. Immun.* 73, 5892–5902.
- Cole, L. E., Laird, M. H., Seekatz, A., Santiago, A., Jiang, Z., Barry, E., Shirey, K. A., Fitzgerald, K. A., and Vogel, S. N. (2010). Phagosomal retention of *Francisella tularensis* results in TIRAP/Mal-independent TLR2 signaling. *J. Leukoc. Biol.* 87, 275–281.
- Cole, L. E., Santiago, A., Barry, E., Kang, T. J., Shirey, K. A., Roberts, Z. J., Elkins, K. L., Cross, A. S., and Vogel, S. N. (2008). Macrophage proinflammatory response to *Francisella tularensis* live vaccine strain requires coordination of multiple signaling pathways. *J. Immunol.* 180, 6885–6891.
- Cole, L. E., Shirey, K. A., Barry, E., Santiago, A., Rallabhandi, P., Elkins, K. L., Puche, A. C., Michalek, S. M., and Vogel, S. N. (2007). Toll-like receptor 2-mediated signaling requirements for *Francisella tularensis* live vaccine strain infection of murine macrophages. *Infect. Immun.* 75, 4127–4137.
- Cole, L. E., Yang, Y., Elkins, K. L., Fernandez, E. T., Qureshi, N., Shlomchik, M. J., Herzenberg, L. A., and Vogel, S. N. (2009). Antigen-specific B-1a antibodies induced by *Francisella tularensis* LPS provide long-term protection against *F. tularensis* LVS challenge. *Proc. Natl. Acad. Sci. U.S.A.* 106, 4343–4348.
- Collazo, C. M., Sher, A., Meierovics, A. I., and Elkins, K. L. (2006). Myeloid differentiation factor-88 (MyD88) is essential for control of primary in vivo *Francisella tularensis* LVS infection, but not for control of intra-macrophage bacterial replication. *Microbes Infect.* 8, 779–790.
- Conlan, J. W., KuoLee, R., Shen, H., and Webb, A. (2002a). Different host defenses are required to protect mice from primary systemic vs pulmonary infection with the facultative intracellular bacterial pathogen, *Francisella tularensis* LVS. *Microb. Pathog.* 32, 127–134.
- Conlan, J. W., Shen, H., Webb, A., and Perry, M. B. (2002b). Mice vaccinated with the O-antigen of *Francisella tularensis* LVS lipopolysaccharide conjugated to bovine serum albumin develop varying degrees of protective immunity against systemic or aerosol challenge with virulent type A and type B strains of the pathogen. *Vaccine* 20, 3465–3471.
- Conlan, J. W., and Oyston, P. C. (2007). Vaccines against *Francisella tularensis*. *Ann. N. Y. Acad. Sci.* 1105, 325–350.
- Conlan, J. W., Shen, H., Kuolee, R., Zhao, X., and Chen, W. (2005). Aerosol-, but not intradermal-immunization with the live vaccine strain of *Francisella tularensis* protects mice against subsequent aerosol challenge with a highly virulent type A strain of the pathogen by an alpha T cell- and interferon gamma-dependent mechanism. *Vaccine* 23, 2477–2485.
- Conlan, J. W., Vinogradov, E., Monteiro, M. A., and Perry, M. B. (2003). Mice intradermally-inoculated with the intact lipopolysaccharide, but not the lipid A or O-chain, from *Francisella tularensis* LVS rapidly acquire varying degrees of enhanced resistance against systemic or aerogenic challenge with virulent strains of the pathogen. *Microb. Pathog.* 34, 39–45.
- Conlan, J. W., Zhao, X., Harris, G., Shen, H., Bolanowski, M., Rietz, C., Sjostedt, A., and Chen, W. (2008). Molecular immunology of experimental primary tularemia in mice infected by respiratory or intradermal routes with type A *Francisella tularensis*. *Mol. Immunol.* 45, 2962–2969.
- Cowley, S., Myltseva, S., and Nano, F. E. (1996). Phase variation in *Francisella tularensis* affecting intracellular growth, lipopolysaccharide antigenicity, and nitric oxide production. *Mol. Microbiol.* 20, 867–874.
- Cowley, S. C., and Elkins, K. L. (2003). Multiple T cell subsets control *Francisella tularensis* LVS intracellular growth without stimulation through macrophage interferon gamma receptors. *J. Exp. Med.* 198, 379–389.
- Cowley, S. C., Goldberg, M. F., Ho, J. A., and Elkins, K. L. (2008). The membrane form of tumor necrosis factor is sufficient to mediate partial innate immunity to *Francisella tularensis* live vaccine strain. *J. Infect. Dis.* 198, 284–292.
- Cowley, S. C., Hamilton, E., Frelinger, J. A., Su, J., Forman, J., and Elkins, K. L. (2005). CD4-CD8-T cells control intracellular bacterial infections both in vitro and in vivo. *J. Exp. Med.* 202, 309–319.
- Cowley, S. C., Meierovics, A. I., Frelinger, J. A., Iwakura, Y., and Elkins, K. L. (2010). Lung CD4-CD8-double-negative T cells are prominent producers of IL-17A and IFN-gamma during primary respiratory murine infection with *Francisella tularensis* live vaccine strain. *J. Immunol.* 184, 5791–5801.
- Cowley, S. C., Myltseva, S. V., and Nano, F. E. (1997). Suppression of *Francisella tularensis* growth in the rat by coinfection with *F. novicida*. *FEMS Microbiol. Lett.* 153, 71–74.
- Cowley, S. C., Sedgwick, J. D., and Elkins, K. L. (2007). Differential requirements by CD4<sup>+</sup> and CD8<sup>+</sup> T cells for soluble and membrane TNF in control of *Francisella tularensis* live vaccine strain

- intramacrophage growth. *J. Immunol.* 179, 7709–7719.
- Crane, D. D., Warner, S. L., and Bosio, C. M. (2009). A novel role for plasmin-mediated degradation of opsonizing antibody in the evasion of host immunity by virulent, but not attenuated, *Francisella tularensis*. *J. Immunol.* 183, 4593–4600.
- Craven, R. R., Hall, J. D., Fuller, J. R., Taft-Benz, S., and Kawula, T. H. (2008). *Francisella tularensis* invasion of lung epithelial cells. *Infect. Immun.* 76, 2833–2842.
- Cremer, T. J., Ravneberg, D. H., Clay, C. D., Piper-Hunter, M. G., Marsh, C. B., Elton, T. S., Gunn, J. S., Amer, A., Kanneganti, T. D., Schlesinger, L. S., Butchar, J. P., and Tridandapani, S. (2009). MiR-155 induction by *F. novicida* but not the virulent *F. tularensis* results in SHIP down-regulation and enhanced pro-inflammatory cytokine response. *PLoS ONE* 4, e8508. doi: 10.1371/journal.pone.0008508
- De Pascalis, R., Taylor, B. C., and Elkins, K. L. (2008). Diverse myeloid and lymphoid cell subpopulations produce gamma interferon during early innate immune responses to *Francisella tularensis* live vaccine strain. *Infect. Immun.* 76, 4311–4321.
- Dennis, D. T., Inglesby, T. V., Henderson, D. A., Bartlett, J. G., Ascher, M. S., Eitzen, E., Fine, A. D., Friedlander, A. M., Hauer, J., Layton, M., Lillibridge, S. R., McDade, J. E., Osterholm, M. T., O'Toole, T., Parker, G., Perl, T. M., Russell, P. K., and Tonat, K. (2001). Tularemia as a biological weapon: medical and public health management. *JAMA* 285, 2763–2773.
- Dreisbach, V. C., Cowley, S., and Elkins, K. L. (2000). Purified lipopolysaccharide from *Francisella tularensis* live vaccine strain (LVS) induces protective immunity against LVS infection that requires B cells and gamma interferon. *Infect. Immun.* 68, 1988–1996.
- Duckett, N. S., Olmos, S., Durrant, D. M., and Metzger, D. W. (2005). Intranasal interleukin-12 treatment for protection against respiratory infection with the *Francisella tularensis* live vaccine strain. *Infect. Immun.* 73, 2306–2311.
- Duenas, A. I., Aceves, M., Orduna, A., Diaz, R., Sanchez Crespo, M., and Garcia-Rodriguez, C. (2006). *Francisella tularensis* LPS induces the production of cytokines in human monocytes and signals via Toll-like receptor 4 with much lower potency than *E. coli* LPS. *Int. Immunol.* 18, 785–795.
- Edwards, J. A., Rockx-Brouwer, D., Nair, V., and Celli, J. (2010). Restricted cytosolic growth of *Francisella tularensis* subsp. *tularensis* by IFN-gamma activation of macrophages. *Microbiology* 156, 327–339.
- El Sahly, H. M., Atmar, R. L., Patel, S. M., Wells, J. M., Cate, T., Ho, M., Guo, K., Pasetti, M. F., Lewis, D. E., Szein, M. B., and Keitel, W. A. (2009). Safety, reactogenicity and immunogenicity of *Francisella tularensis* live vaccine strain in humans. *Vaccine* 27, 4905–4911.
- Eliasson, H., Olcen, P., Sjöstedt, A., Jurstrand, M., Bäck, E., and Andersson, S. (2008). Kinetics of the immune response associated with tularemia: comparison of an enzyme-linked immunosorbent assay, a tube agglutination test, and a novel whole-blood lymphocyte stimulation test. *Clin. Vaccine Immunol.* 15, 1238–1243.
- Elkins, K. L., Bosio, C. M., and Rhinehart-Jones, T. R. (1999). Importance of B cells, but not specific antibodies, in primary and secondary protective immunity to the intracellular bacterium *Francisella tularensis* live vaccine strain. *Infect. Immun.* 67, 6002–6007.
- Elkins, K. L., Colombini, S. M., Meierovics, A. I., Chu, M. C., Chou, A. Y., and Cowley, S. C. (2010). Survival of secondary lethal systemic *Francisella* LVS challenge depends largely on interferon gamma. *Microbes Infect.* 12, 28–36.
- Elkins, K. L., Cooper, A., Colombini, S. M., Cowley, S. C., and Kieffer, T. L. (2002). In vivo clearance of an intracellular bacterium, *Francisella tularensis* LVS, is dependent on the p40 subunit of interleukin-12 (IL-12) but not on IL-12 p70. *Infect. Immun.* 70, 1936–1948.
- Elkins, K. L., Cowley, S. C., and Bosio, C. M. (2003). Innate and adaptive immune responses to an intracellular bacterium, *Francisella tularensis* live vaccine strain. *Microbes Infect.* 5, 132–142.
- Elkins, K. L., Cowley, S. C., and Bosio, C. M. (2007). Innate and adaptive immunity to *Francisella*. *Ann. N. Y. Acad. Sci.* 1105, 284–324.
- Elkins, K. L., Rhinehart-Jones, T. R., Culkin, S. J., Yee, D., and Winegar, R. K. (1996). Minimal requirements for murine resistance to infection with *Francisella tularensis* LVS. *Infect. Immun.* 64, 3288–3293.
- Endsley, J. J., Torres, A. G., Gonzales, C. M., Kosykh, V. G., Motin, V. L., Peterson, J. W., Estes, D. M., and Klimpel, G. R. (2009). Comparative antimicrobial activity of granulysin against bacterial biothreat agents. *Open Microbiol. J.* 3, 92–96.
- Ericsson, M., Sandström, G., Sjöstedt, A., and Tärnvik, A. (1994). Persistence of cell-mediated immunity and decline of humoral immunity to the intracellular bacterium *Francisella tularensis* 25 years after natural infection. *J. Infect. Dis.* 170, 110–114.
- Eyles, J. E., Hartley, M. G., Laws, T. R., Oyston, P. C., Griffin, K. F., and Titball, R. W. (2008). Protection afforded against aerosol challenge by systemic immunisation with inactivated *Francisella tularensis* live vaccine strain (LVS). *Microb. Pathog.* 44, 164–168.
- Forestal, C. A., Benach, J. L., Carbonara, C., Italo, J. K., Lisinski, T. J., and Furie, M. B. (2003). *Francisella tularensis* selectively induces proinflammatory changes in endothelial cells. *J. Immunol.* 171, 2563–2570.
- Forestal, C. A., Malik, M., Catlett, S. V., Savitt, A. G., Benach, J. L., Sellati, T. J., and Furie, M. B. (2007). *Francisella tularensis* has a significant extracellular phase in infected mice. *J. Infect. Dis.* 196, 134–137.
- Fortier, A. H., Slayter, M. V., Ziemba, R., Meltzer, M. S., and Nacy, C. A. (1991). Live vaccine strain of *Francisella tularensis*: infection and immunity in mice. *Infect. Immun.* 59, 2922–2928.
- Foshay, L. (1950). Tularemia. *Annu. Rev. Microbiol.* 4, 313–330.
- Francis, E., and Felton, L. D. (1942). Antitularemic serum. *Public Health Rep.* 57, 44–55.
- Fuller, C. L., Brittingham, K. C., Hepburn, M. J., Martin, J. W., Pettitt, P. L., Pittman, P. R., and Bavari, S. (2006). Dominance of human innate immune responses in primary *Francisella tularensis* live vaccine strain vaccination. *J. Allergy Clin. Immunol.* 117, 1186–1188.
- Fuller, C. L., Brittingham, K. C., Porter, M. W., Hepburn, M. J., Pettitt, P. L., Pittman, P. R., and Bavari, S. (2007). Transcriptome analysis of human immune responses following live vaccine strain (LVS) *Francisella tularensis* vaccination. *Mol. Immunol.* 44, 3173–3184.
- Fulop, M., Manchee, R., and Titball, R. (1995). Role of lipopolysaccharide and a major outer membrane protein from *Francisella tularensis* in the induction of immunity against tularemia. *Vaccine* 13, 1220–1225.
- Fulop, M., Mastroeni, P., Green, M., and Titball, R. W. (2001). Role of antibody to lipopolysaccharide in protection against low- and high-virulence strains of *Francisella tularensis*. *Vaccine* 19, 4465–4472.
- Gardam, M. A., Keystone, E. C., Menzies, R., Manners, S., Skamene, E., Long, R., and Vinh, D. C. (2003). Anti-tumour necrosis factor agents and tuberculosis risk: mechanisms of action and clinical management. *Lancet Infect. Dis.* 3, 148–155.
- Geha, R. S. (2003). Allergy and hypersensitivity. Nature versus nurture in allergy and hypersensitivity. *Curr. Opin. Immunol.* 15, 603–608.
- Gentry, M., Taormina, J., Pyles, R. B., Yeager, L., Kirtley, M., Popov, V. L., Klimpel, G., and Eaves-Pyles, T. (2007). Role of primary human alveolar epithelial cells in host defense against *Francisella tularensis* infection. *Infect. Immun.* 75, 3969–3978.
- Gill, N., Wlodarska, M., and Finlay, B. B. (2010). The future of mucosal immunology: studying an integrated system-wide organ. *Nat. Immunol.* 11, 558–560.
- Gregory, S. H., Mott, S., Phung, J., Lee, J., Moise, L., McMurry, J. A., Martin, W., and DeGroot, A. S. (2009). Epitope-based vaccination against pneumonic tularemia. *Vaccine* 27, 5299–5306.
- Gunn, J. S., and Ernst, R. K. (2007). The structure and function of *Francisella* lipopolysaccharide. *Ann. N. Y. Acad. Sci.* 1105, 202–218.
- Hajjar, A. M., Harvey, M. D., Shaffer, S. A., Goodlett, D. R., Sjöstedt, A., Edebo, H., Forsman, M., Bystrom, M., Pelletier, M., Wilson, C. B., Miller, S. I., Skerrett, S. J., and Ernst, R. K. (2006). Lack of in vitro and in vivo recognition of *Francisella tularensis* subspecies lipopolysaccharide by Toll-like receptors. *Infect. Immun.* 74, 6730–6738.
- Hall, J. D., Kurtz, S. L., Rigel, N. W., Gunn, B. M., Taft-Benz, S., Morrison, J. P., Fong, A. M., Patel, D. D., Braunstein, M., and Kawula, T. H. (2009). The impact of chemokine receptor CX3CR1 deficiency during respiratory infections with *Mycobacterium tuberculosis* or *Francisella tularensis*. *Clin. Exp. Immunol.* 156, 278–284.
- Hall, J. D., Woolard, M. D., Gunn, B. M., Craven, R. R., Taft-Benz, S., Frelinger, J. A., and Kawula, T. H. (2008). Infected-host-cell repertoire and cellular response in the lung following inhalation of *Francisella tularensis* Schu S4, LVS, or U112. *Infect. Immun.* 76, 5843–5852.
- Hambleton, P., Evans, C. G., Hood, A. M., and Strange, R. E. (1974). Vaccine potencies of the live vaccine strain of *Francisella tularensis* and isolated bacterial components. *Br. J. Exp. Pathol.* 55, 363–373.
- Han, S., Bishop, B. M., and van Hoek, M. L. (2008). Antimicrobial activity of human beta-defensins and induction by *Francisella*. *Biochem. Biophys. Res. Commun.* 371, 670–674.
- Henry, T., Kirimanjeshwara, G. S., Ruby, T., Jones, J. W., Peng, K., Perret, M., Ho, L., Sauer, J. D., Iwakura, Y., Metzger, D. W., and Monack, D. M. (2010). Type I IFN signaling constrains IL-17A/F secretion by gamma delta T cells during bacterial infections. *J. Immunol.* 184, 3755–3767.
- Hollis, D. G., Weaver, R. E., Steigerwalt, A. G., Wenger, J. D., Moss, C. W., and Brenner, D. J. (1989). *Francisella philomiragia* comb. nov. (formerly *Yersinia philomiragia*) and *Francisella*

- tularensis* biogroup *novicida* (formerly *Francisella novicida*) associated with human disease. *J. Clin. Microbiol.* 27, 1601–1608.
- Hood, A. M. (1977). Virulence factors of *Francisella tularensis*. *J. Hyg. (Lond.)* 79, 47–60.
- Horzempa, J., O'Dee, D. M., Shanks, R. M., and Nau, G. J. (2010). *Francisella tularensis* DeltapyrF mutants show that replication in nonmacrophages is sufficient for pathogenesis in vivo. *Infect. Immun.* 78, 2607–2619.
- Huber, B., Escudero, R., Busse, H. J., Seibold, E., Scholz, H. C., Anda, P., Kampfer, P., and Spletstoesser, W. D. (2010). Description of *Francisella hispaniensis* sp. nov., isolated from human blood, reclassification of *Francisella novicida* (Larson et al. 1955) Olsufiev et al. 1959 as *Francisella tularensis* subsp. *novicida* comb. nov. and emended description of the genus *Francisella*. *Int. J. Syst. Evol. Microbiol.* 60, 1887–1896.
- Huntley, J. F., Conley, P. G., Rasko, D. A., Hagman, K. E., Apicella, M. A., and Norgard, M. V. (2008). Native outer membrane proteins protect mice against pulmonary challenge with virulent type A *Francisella tularensis*. *Infect. Immun.* 76, 3664–3671.
- Janova, S., Pavkova, I., Reichelova, M., Hubaleka, M., Stulik, J., and Macela, A. (2007). Proteomic analysis of antibody response in a case of laboratory-acquired infection with *Francisella tularensis* subsp. *tularensis*. *Folia Microbiol (Praha)* 52, 194–198.
- Johansson, A., Celli, J., Conlan, W., Elkins, K. L., Forsman, M., Keim, P. S., Larsson, P., Manoel, C., Nano, F. E., Petersen, J. M., and Sjöstedt, A. (2010). Objections to the transfer of *Francisella novicida* to the subspecies rank of *Francisella tularensis*. *Int. J. Syst. Evol. Microbiol.* 60, 1717–1718; author reply 1718–1720.
- Jones, J. W., Kayagaki, N., Broz, P., Henry, T., Newton, K., O'Rourke, K., Chan, S., Dong, J., Qu, Y., Roose-Girma, M., Dixit, V. M., and Monack, D. M. (2010). Absent in melanoma 2 is required for innate immune recognition of *Francisella tularensis*. *Proc. Natl. Acad. Sci. U.S.A.* 107, 9771–9776.
- Karttunen, R., Surcel, H. M., Andersson, G., Ekre, H. P., and Herva, E. (1991). *Francisella tularensis*-induced in vitro gamma interferon, tumor necrosis factor alpha, and interleukin 2 responses appear within 2 weeks of tularemia vaccination in human beings. *J. Clin. Microbiol.* 29, 753–756.
- Katz, J., Zhang, P., Martin, M., Vogel, S. N., and Michalek, S. M. (2006). Toll-like receptor 2 is required for inflammatory responses to *Francisella tularensis* LVS. *Infect. Immun.* 74, 2809–2816.
- Ketavarapu, J. M., Rodriguez, A. R., Yu, J. J., Cong, Y., Murthy, A. K., Forsthuber, T. G., Guentzel, M. N., Klose, K. E., Berton, M. T., and Arulanandam, B. P. (2008). Mast cells inhibit intramacrophage *Francisella tularensis* replication via contact and secreted products including IL-4. *Proc. Natl. Acad. Sci. U.S.A.* 105, 9313–9318.
- Kieffer, T. L., Cowley, S., Nano, F. E., and Elkins, K. L. (2003). *Francisella novicida* LPS has greater immunobiological activity in mice than *F. tularensis* LPS, and contributes to *F. novicida* murine pathogenesis. *Microbes Infect.* 5, 397–403.
- Kirimanjeswara, G. S., Golden, J. M., Bakshi, C. S., and Metzger, D. W. (2007). Prophylactic and therapeutic use of antibodies for protection against respiratory infection with *Francisella tularensis*. *J. Immunol.* 179, 532–539.
- Klimpel, G. R., Eaves-Pyles, T., Moen, S. T., Taormina, J., Peterson, J. W., Chopra, A. K., Niesel, D. W., Carness, P., Haithcoat, J. L., Kirtley, M., and Nasr, A. B. (2008). Levofloxacin rescues mice from lethal intra-nasal infections with virulent *Francisella tularensis* and induces immunity and production of protective antibody. *Vaccine* 26, 6874–6882.
- Konstantinou, M. P., Abecassis-Cotta, S., Valeyrie-Allanore, L., Ortonne, N., Maurin, M., Roujeau, J. C., Revuz, J., and Bagot, M. (2009). Severe tularemia mimicking glandular tuberculosis during adalimumab therapy. *Ann. Dermatol. Venereol.* 136, 718–722.
- Koskela, P., and Herva, E. (1980). Cell-mediated immunity against *Francisella tularensis* after natural infection. *Scand. J. Infect. Dis.* 12, 281–287.
- Koskela, P., and Salminen, A. (1985). Humoral immunity against *Francisella tularensis* after natural infection. *J. Clin. Microbiol.* 22, 973–979.
- Kroca, M., Tärnvik, A., and Sjöstedt, A. (2000). The proportion of circulating gamma/delta T cells increases after the first week of onset of tularemia and remains elevated for more than a year. *Clin. Exp. Immunol.* 120, 280–284.
- Krocova, Z., Hartlova, A., Souckova, D., Zivna, L., Kroca, M., Rudolf, E., Macela, A., and Stulik, J. (2008). Interaction of B cells with intracellular pathogen *Francisella tularensis*. *Microb. Pathog.* 45, 79–85.
- Kugeler, K. J., Mead, P. S., Janusz, A. M., Staples, J. E., Kubota, K. A., Chalcraft, L. G., and Petersen, J. M. (2009). Molecular Epidemiology of *Francisella tularensis* in the United States. *Clin. Infect. Dis.* 48, 863–870.
- Kugeler, K. J., Mead, P. S., McGowan, K. L., Burnham, J. M., Hogarty, M. D., Ruchelli, E., Pollard, K., Husband, B., Conley, C., Rivera, T., Kelesidis, T., Lee, W. M., Mabey, W., Winchell, J. M., Stang, H. L., Staples, J. E., Chalcraft, L. J., and Petersen, J. M. (2008). Isolation and characterization of a novel *Francisella* sp. from human cerebrospinal fluid and blood. *J. Clin. Microbiol.* 46, 2428–2431.
- KuoLee, R., Harris, G., Conlan, J. W., and Chen, W. (2007). Oral immunization of mice with the live vaccine strain (LVS) of *Francisella tularensis* protects mice against respiratory challenge with virulent type A *F. tularensis*. *Vaccine* 25, 3781–3791.
- Lai, X. H., Golovliov, I., and Sjöstedt, A. (2001). *Francisella tularensis* induces cytopathogenicity and apoptosis in murine macrophages via a mechanism that requires intracellular bacterial multiplication. *Infect. Immun.* 69, 4691–4694.
- Lai, X. H., and Sjöstedt, A. (2003). Delineation of the molecular mechanisms of *Francisella tularensis*-induced apoptosis in murine macrophages. *Infect. Immun.* 71, 4642–4646.
- Lavine, C. L., Clinton, S. R., Angelova-Fischer, I., Marion, T. N., Bina, X. R., Bina, J. E., Whitt, M. A., and Miller, M. A. (2007). Immunization with heat-killed *Francisella tularensis* LVS elicits protective antibody-mediated immunity. *Eur. J. Immunol.* 37, 3007–3020.
- Lee, B. Y., Horwitz, M. A., and Clemens, D. L. (2006). Identification, recombinant expression, immunolocalization in macrophages, and T-cell responsiveness of the major extracellular proteins of *Francisella tularensis*. *Infect. Immun.* 74, 4002–4013.
- Leelaporn, A., Yongyod, S., Limsrivanchakorn, S., Yungyuen, T., and Kiratisin, P. (2008). *Francisella novicida* bacteremia, Thailand. *Emerging Infect. Dis.* 14, 1935–1937.
- Leiby, D. A., Fortier, A. H., Crawford, R. M., Schreiber, R. D., and Nacy, C. A. (1992). In vivo modulation of the murine immune response to *Francisella tularensis* LVS by administration of anticytokine antibodies. *Infect. Immun.* 60, 84–89.
- Leombo, A., Pelletier, M., Iyer, R., Timko, M., Dudda, J. C., West, T. E., Wilson, C. B., Hajjar, A. M., and Skerrett, S. J. (2008). Administration of a synthetic TLR4 agonist protects mice from pneumonic tularemia. *J. Immunol.* 180, 7574–7581.
- Lin, Y., Ritchea, S., Logar, A., Slight, S., Messmer, M., Rangel-Moreno, J., Gugliani, L., Alcorn, J. F., Strawbridge, H., Park, S. M., Onishi, R., Nyugen, N., Walter, M. J., Pociask, D., Randall, T. D., Gaffen, S. L., Iwakura, Y., Kolls, J. K., and Khader, S. A. (2009). Interleukin-17 is required for T helper 1 cell immunity and host resistance to the intracellular pathogen *Francisella tularensis*. *Immunity* 31, 799–810.
- Lindgren, H., Shen, H., Zingmark, C., Golovliov, I., Conlan, W., and Sjöstedt, A. (2007). Resistance of *Francisella tularensis* strains against reactive nitrogen and oxygen species with special reference to the role of KatG. *Infect. Immun.* 75, 1303–1309.
- Lindgren, H., Stenman, L., Tärnvik, A., and Sjöstedt, A. (2005). The contribution of reactive nitrogen and oxygen species to the killing of *Francisella tularensis* LVS by murine macrophages. *Microbes Infect.* 7, 467–475.
- Lindgren, H., Stenmark, S., Chen, W., Tärnvik, A., and Sjöstedt, A. (2004). Distinct roles of reactive nitrogen and oxygen species to control infection with the facultative intracellular bacterium *Francisella tularensis*. *Infect. Immun.* 72, 7172–7182.
- Lopez, M. C., Duckett, N. S., Baron, S. D., and Metzger, D. W. (2004). Early activation of NK cells after lung infection with the intracellular bacterium, *Francisella tularensis* LVS. *Cell. Immunol.* 232, 75–85.
- Lyons, R. C., and Wu, T. H. (2007). Animal models of *Francisella tularensis* infection. *Ann. N. Y. Acad. Sci.* 1105, 238–265.
- Malik, M., Bakshi, C. S., McCabe, K., Catlett, S. V., Shah, A., Singh, R., Jackson, P. L., Gaggar, A., Metzger, D. W., Melendez, J. A., Blalock, J. E., and Sellati, T. J. (2007). Matrix metalloproteinase 9 activity enhances host susceptibility to pulmonary infection with type A and B strains of *Francisella tularensis*. *J. Immunol.* 178, 1013–1020.
- Malik, M., Bakshi, C. S., Sahay, B., Shah, A., Lotz, S. A., and Sellati, T. J. (2006). Toll-like receptor 2 is required for control of pulmonary infection with *Francisella tularensis*. *Infect. Immun.* 74, 3657–3662.
- Maranan, M. C., Schiff, D., Johnson, D. C., Abrahams, C., Wylam, M., and Gerber, S. I. (1997). Pneumonic tularemia in a patient with chronic granulomatous disease. *Clin. Infect. Dis.* 25, 630–633.
- Mares, C. A., Ojeda, S. S., Morris, E. G., Li, Q., and Teale, J. M. (2008). Initial delay in the immune response to *Francisella tularensis* is followed by hypercytokinemia characteristic of severe sepsis and correlating with upregulation and release of damage-associated molecular patterns. *Infect. Immun.* 76, 3001–3010.
- Mares, C. A., Sharma, J., Li, Q., Rangel, E. L., Morris, E. G., Enriquez, M. I., and Teale, J. M. (2010). Defect in efferocytosis leads to alternative activation of macrophages in *Francisella* infections. *Immunol. Cell Biol.* doi: 10.1038/icb.2010.81. [Epub ahead of print].

- Markel, G., Bar-Haim, E., Zahavy, E., Cohen, H., Cohen, O., Shafferman, A., and Velan, B. (2010). The involvement of IL-17A in the murine response to sub-lethal inhalational infection with *Francisella tularensis*. *PLoS ONE* 5, e11176. doi: 10.1371/journal.pone.0011176
- Martinon, F., Chen, X., Lee, A. H., and Glimcher, L. H. (2010). TLR activation of the transcription factor XBP1 regulates innate immune responses in macrophages. *Nat. Immunol.* 11, 411–418.
- McCaffrey, R. L., and Allen, L. A. (2006). *Francisella tularensis* LVS evades killing by human neutrophils via inhibition of the respiratory burst and phagosome escape. *J. Leukoc. Biol.* 80, 1224–1230.
- McCaffrey, R. L., Schwartz, J. T., Lindemann, S. R., Moreland, J. G., Buchan, B. W., Jones, B. D., and Allen, L. A. (2010). Multiple mechanisms of NADPH oxidase inhibition by type A and type B *Francisella tularensis*. *J. Leukoc. Biol.* 88, 791–805.
- McMurry, J. A., Gregory, S. H., Moise, L., Rivera, D., Buus, S., and De Groot, A. S. (2007). Diversity of *Francisella tularensis* Schu4 antigens recognized by T lymphocytes after natural infections in humans: identification of candidate epitopes for inclusion in a rationally designed tularemia vaccine. *Vaccine* 25, 3179–3191.
- Melillo, A. A., Bakshi, C. S., and Melendez, J. A. (2010). *Francisella tularensis* antioxidants harness reactive oxygen species to restrict macrophage signaling and cytokine production. *J. Biol. Chem.* 285, 27553–27560.
- Metzger, D. W., Bakshi, C. S., and Kirimanjesswara, G. (2007). Mucosal immunopathogenesis of *Francisella tularensis*. *Ann. N. Y. Acad. Sci.* 1105, 266–283.
- Moreland, J. G., Hook, J. S., Bailey, G., Ulland, T., and Nauseef, W. M. (2009). *Francisella tularensis* directly interacts with the endothelium and recruits neutrophils with a blunted inflammatory phenotype. *Am. J. Physiol. Lung Cell Mol. Physiol.* 296, L1076–L1084.
- Moule, M. G., Monack, D. M., and Schneider, D. S. (2010). Reciprocal analysis of *Francisella novicida* infections of a *Drosophila melanogaster* model reveal host–pathogen conflicts mediated by reactive oxygen and imd-regulated innate immune response. *PLoS Pathog.* 6, e1001065. doi: 10.1371/journal.ppat.1001065
- Nelson, M., Lever, M. S., Dean, R. E., Savage, V. L., Salguero, F. J., Pearce, P. C., Stevens, D. J., and Simpson, A. J. (2010). Characterization of lethal inhalational infection with *Francisella tularensis* in the common marmoset (*Callithrix jacchus*). *J. Med. Microbiol.* 59, 1107–1113.
- Nelson, M., Lever, M. S., Savage, V. L., Salguero, F. J., Pearce, P. C., Stevens, D. J., and Simpson, A. J. (2009). Establishment of lethal inhalational infection with *Francisella tularensis* (tularemia) in the common marmoset (*Callithrix jacchus*). *Int. J. Exp. Pathol.* 90, 109–118.
- Overholt, E. L., Tigertt, W. D., Kadull, P. J., Ward, M. K., Charke, N. D., Rene, R. M., Salzman, T. E., and Mallory, S. (1961). An analysis of forty-two cases of laboratory-acquired tularemia: treatment with broad-spectrum antibiotics. *Am. J. Med. Sci.* 30, 785–791.
- Pammit, M. A., Raulie, E. K., Lauriano, C. M., Klose, K. E., and Arulanandam, B. P. (2006). Intranasal vaccination with a defined attenuated *Francisella novicida* strain induces gamma interferon-dependent antibody-mediated protection against tularemia. *Infect. Immun.* 74, 2063–2071.
- Paranavitana, C., Zelazowska, E., DaSilva, L., Pittman, P. R., and Nikolich, M. (2010). Th17 cytokines in recall responses against *Francisella tularensis* in humans. *J. Interferon Cytokine Res.* 30, 471–476.
- Park, M. K., Amichay, D., Love, P., Wick, E., Liao, F., Grinberg, A., Rabin, R. L., Zhang, H. H., Gebeyehu, S., Wright, T. M., Iwasaki, A., Weng, Y., DeMartino, J. A., Elkins, K. L., and Farber, J. M. (2002). The CXC chemokine murine monokine induced by IFN-gamma (CXC chemokine ligand 9) is made by APCs, targets lymphocytes including activated B cells, and supports antibody responses to a bacterial pathogen in vivo. *J. Immunol.* 169, 1433–1443.
- Pierini, L. M. (2006). Uptake of serum-opsinized *Francisella tularensis* by macrophages can be mediated by class A scavenger receptors. *Cell. Microbiol.* 8, 1361–1370.
- Polsinelli, T., Meltzer, M. S., and Fortier, A. H. (1994). Nitric oxide-independent killing of *Francisella tularensis* by IFN-gamma-stimulated murine alveolar macrophages. *J. Immunol.* 153, 1238–1245.
- Poquet, Y., Kroca, M., Halary, F., Stenmark, S., Peyrat, M. A., Bonneville, M., Fournie, J. J., and Sjøstedt, A. (1998). Expansion of Vgamma9Vdelta2 T cells is triggered by *Francisella tularensis*-derived phosphoantigens in tularemia but not after tularemia vaccination. *Infect. Immun.* 66, 2107–2114.
- Powell, H. J., Cong, Y., Yu, J. J., Guentzel, M. N., Berton, M. T., Klose, K. E., Murthy, A. K., and Arulanandam, B. P. (2008). CD4<sup>+</sup> T cells are required during priming but not the effector phase of antibody-mediated IFN-gamma-dependent protective immunity against pulmonary *Francisella novicida* infection. *Immunol. Cell Biol.* 86, 515–522.
- Pyles, R. B., Jezek, G. E., and Eaves-Pyles, T. D. (2010). Toll-like receptor 3 agonist protection against experimental *Francisella tularensis* respiratory tract infection. *Infect. Immun.* 78, 1700–1710.
- Rajaram, M. V., Butchar, J. P., Parsa, K. V., Cremer, T. J., Amer, A., Schlesinger, L. S., and Tridandapani, S. (2009). Akt and SHIP modulate *Francisella* escape from the phagosome and induction of the Fas-mediated death pathway. *PLoS ONE* 4, e7919. doi: 10.1371/journal.pone.0007919
- Rathinam, V. A., Jiang, Z., Waggoner, S. N., Sharma, S., Cole, L. E., Waggoner, L., Vanaja, S. K., Monks, B. G., Ganesan, S., Latz, E., Hornung, V., Vogel, S. N., Szomolanyi-Tsuda, E., and Fitzgerald, K. A. (2010). The AIM2 inflammasome is essential for host defense against cytosolic bacteria and DNA viruses. *Nat. Immunol.* 11, 395–402.
- Ray, H. J., Chu, P., Wu, T. H., Lyons, C. R., Murthy, A. K., Guentzel, M. N., Klose, K. E., and Arulanandam, B. P. (2010). The Fischer 344 rat reflects human susceptibility to *Francisella* pulmonary challenge and provides a new platform for virulence and protection studies. *PLoS ONE* 5, e9952. doi: 10.1371/journal.pone.0009952
- Raymond, C. R., and Conlan, J. W. (2009). Differential susceptibility of Sprague-Dawley and Fischer 344 rats to infection by *Francisella tularensis*. *Microb. Pathog.* 46, 231–234.
- Rodriguez, A. R., Yu, J. J., Murthy, A. K., Guentzel, M. N., Klose, K. E., Forsthuber, T. G., Chambers, J. P., Berton, M. T., and Arulanandam, B. P. (2010). Mast cell/IL-4 control of *Francisella tularensis* replication and host cell death is associated with increased ATP production and phagosomal acidification. *Mucosal Immunol.* doi: 10.1038/mi.2010.59. [Epub ahead of print].
- Roth, K. M., Gunn, J. S., Lafuse, W., and Satoskar, A. R. (2009). *Francisella* inhibits STAT1-mediated signaling in macrophages and prevents activation of antigen-specific T cells. *Int. Immunol.* 21, 19–28.
- Salerno-Goncalves, R., Hepburn, M. J., Bavari, S., and Szein, M. B. (2009). Generation of heterogeneous memory T cells by live attenuated tularemia vaccine in humans. *Vaccine* 28, 195–206.
- Sändstrom, G. (1994). The tularemia vaccine. *J. Chem. Tech. Biotechnol.* 59, 315–320.
- Santic, M., Molmeret, M., and Abu Kwaik, Y. (2005). Modulation of biogenesis of the *Francisella tularensis* subsp. *novicida*-containing phagosome in quiescent human macrophages and its maturation into a phagolysosome upon activation by IFN-gamma. *Cell. Microbiol.* 7, 957–967.
- Saslaw, S., Eigelsbach, H. T., Prior, J. A., Wilson, H. E., and Carhart, S. (1961a). Tularemia vaccine study. II. Respiratory challenge. *Arch. Int. Med.* 107, 134–146.
- Saslaw, S., Eigelsbach, H. T., Wilson, H. E., Prior, J., and Carhart, S. (1961b). Tularemia vaccine study. I. Intracutaneous challenge. *Arch. Int. Med.* 107, 121–133.
- Schulert, G. S., and Allen, L. A. (2006). Differential infection of mononuclear phagocytes by *Francisella tularensis*: role of the macrophage mannose receptor. *J. Leukoc. Biol.* 80, 563–571.
- Sharma, J., Li, Q., Mishra, B. B., Pena, C., and Teale, J. M. (2009). Lethal pulmonary infection with *Francisella novicida* is associated with severe sepsis. *J. Leukoc. Biol.* 86, 491–504.
- Shen, H., Harris, G., Chen, W., Sjøstedt, A., Ryden, P., and Conlan, W. (2010). Molecular immune responses to aerosol challenge with *Francisella tularensis* in mice inoculated with live vaccine candidates of varying efficacy. *PLoS ONE* 5, e13349. doi: 10.1371/journal.pone.0013349
- Shirey, K. A., Cole, L. E., Keegan, A. D., and Vogel, S. N. (2008). *Francisella tularensis* live vaccine strain induces macrophage alternative activation as a survival mechanism. *J. Immunol.* 181, 4159–4167.
- Sicherer, S. H., Asturias, E. J., Winkelstein, J. A., Dick, J. D., and Willoughby, R. E. (1997). *Francisella philomiragia* sepsis in chronic granulomatous disease. *Pediatr. Infect. Dis. J.* 16, 420–422.
- Sjøstedt, A., Conlan, J. W., and North, R. J. (1994). Neutrophils are critical for host defense against primary infection with the facultative intracellular bacterium *Francisella tularensis* in mice and participate in defense against reinfection. *Infect. Immun.* 62, 2779–2783.
- Sjøstedt, A., North, R. J., and Conlan, J. W. (1996). The requirement of tumour necrosis factor-alpha and interferon-gamma for the expression of protective immunity to secondary murine tularemia depends on the size of the challenge inoculum. *Microbiology* 142 (Pt 6), 1369–1374.
- Splettsöesser, W. D., Matz-Rensing, K., Seibold, E., Tomaso, H., Al Dahouk, S., Grunow, R., Essbauer, S., Buckendahl, A., Finke, E. J., and Neubauer, H. (2007). Re-emergence of *Francisella tularensis* in Germany: fatal tularemia in a colony of semi-free-living marmosets (*Callithrix jacchus*). *Epidemiol. Infect.* 135, 1256–1265.
- Staples, J. E., Kubota, K. A., Chalcraft, L. G., Mead, P. S., and Petersen, J. M.

- (2006). Epidemiologic and molecular analysis of human tularemia, United States, 1964–2004. *Emerging Infect. Dis.* 12, 1113–1118.
- Stenmark, S., Lindgren, H., Tärnvik, A., and Sjöstedt, A. (2003). Specific antibodies contribute to the host protection against strains of *Francisella tularensis* subspecies *holarctica*. *Microb. Pathog.* 35, 73–80.
- Sundaresh, S., Randall, A., Unal, B., Petersen, J. M., Belisle, J. T., Hartley, M. G., Duffield, M., Titball, R. W., Davies, D. H., Felgner, P. L., and Baldi, P. (2007). From protein microarrays to diagnostic antigen discovery: a study of the pathogen *Francisella tularensis*. *Bioinformatics* 23, i508–i518.
- Surcel, H.-M., Syrjala, H., Karttunen, R., Tapaninaho, S., and Herva, E. (1991). Development of *Francisella tularensis* antigen responses measured as T-lymphocyte proliferation and cytokine production (tumor necrosis factor alpha, gamma interferon, and interleukin-2 and -4) during human tularemia. *Infect. Immun.* 59, 1948–1953.
- Tärnvik, A. (1989). Nature of protective immunity to *Francisella tularensis*. *Rev. Infect. Dis.* 11, 440–451.
- Thakran, S., Li, H., Lavine, C. L., Miller, M. A., Bina, J. E., Bina, X. R., and Re, F. (2008). Identification of *Francisella tularensis* lipoproteins that stimulate the toll-like receptor (TLR) 2/TLR1 heterodimer. *J. Biol. Chem.* 283, 3751–3760.
- Thomas, R. M., Titball, R. W., Oyston, P. C., Griffin, K., Waters, E., Hitchen, P. G., Michell, S. L., Grice, I. D., Wilson, J. C., and Prior, J. L. (2007). The immunologically distinct O antigens from *Francisella tularensis* subspecies *tularensis* and *Francisella novicida* are both virulence determinants and protective antigens. *Infect. Immun.* 75, 371–378.
- Thorpe, B. D., and Marcus, S. (1967). Phagocytosis and intracellular fate of *Pasteurella tularensis*: in vitro effects of exudate stimulants and streptomycin on phagocytic cells. *J. Reticuloendothel. Soc.* 4, 10–23.
- Twenhafel, N. A., Alves, D. A., and Purcell, B. K. (2009). Pathology of inhalational *Francisella tularensis* spp. *tularensis* SCHU S4 infection in African green monkeys (*Chlorocebus aethiops*). *Vet. Pathol.* 46, 698–706.
- Ulland, T. K., Buchan, B. W., Ketterer, M. R., Fernandes-Alnemri, T., Meyerholz, D. K., Apicella, M. A., Alnemri, E. S., Jones, B. D., Nauseef, W. M., and Sutterwala, F. S. (2010). Cutting edge: mutation of *Francisella tularensis* mviN leads to increased macrophage absent in melanoma 2 inflammasome activation and a loss of virulence. *J. Immunol.* 185, 2670–2674.
- Valentino, M., and Frelinger, J. (2009). An approach to the identification of T cell epitopes in the genomic era: application to *Francisella tularensis*. *Immunol. Res.* 45, 218–228.
- Valentino, M. D., Hensley, L. L., Skrombolas, D., McPherson, P. L., Woolard, M. D., Kawula, T. H., Frelinger, J. A., and Frelinger, J. G. (2009). Identification of a dominant CD4 T cell epitope in the membrane lipoprotein Tul4 from *Francisella tularensis* LVS. *Mol. Immunol.* 46, 1830–1838.
- Vojtech, L. N., Sanders, G. E., Conway, C., Ostland, V., and Hansen, J. D. (2009). Host immune response and acute disease in a zebrafish model of *Francisella* pathogenesis. *Infect. Immun.* 77, 914–925.
- Vonkavaara, M., Telepnev, M. V., Ryden, P., Sjöstedt, A., and Stöven, S. (2008). *Drosophila melanogaster* as a model for elucidating the pathogenicity of *Francisella tularensis*. *Cell. Microbiol.* 10, 1327–1338.
- Waag, D. M., McKee, K. T. Jr., Sandstrom, G., Pratt, L. L., Bolt, C. R., England, M. J., Nelson, G. O., and Williams, J. C. (1995). Cell-mediated and humoral immune responses after vaccination of human volunteers with the live vaccine strain of *Francisella tularensis*. *Clin. Diagn. Lab. Immunol.* 2, 143–148.
- Whipp, M. J., Davis, J. M., Lum, G., de Boer, J., Zhou, Y., Bearden, S. W., Petersen, J. M., Chu, M. C., and Hogg, G. (2003). Characterization of a novicida-like subspecies of *Francisella tularensis* isolated in Australia. *J. Med. Microbiol.* 52, 839–842.
- Wickstrum, J. R., Bokhari, S. M., Fischer, J. L., Pinson, D. M., Yeh, H. W., Horvat, R. T., and Parmely, M. J. (2009). *Francisella tularensis* induces extensive caspase-3 activation and apoptotic cell death in the tissues of infected mice. *Infect. Immun.* 77, 4827–4836.
- Wilder, J. A., and Gelhaus, H. C. (2009). “Characterization of aerosol infection with *F. tularensis* Schu S4 in cynomolgus macaques and LD<sub>50</sub> determination,” in *Sixth International Tularemia Conference*, Berlin, 127.
- Wilson, J. E., Katkere, B., and Drake, J. R. (2009). *Francisella tularensis* induces ubiquitin-dependent major histocompatibility complex class II degradation in activated macrophages. *Infect. Immun.* 77, 4953–4965.
- Woolard, M. D., Hensley, L. L., Kawula, T. H., and Frelinger, J. A. (2008). Respiratory *Francisella tularensis* live vaccine strain infection induces Th17 cells and prostaglandin E2, which inhibits generation of gamma interferon-positive T cells. *Infect. Immun.* 76, 2651–2659.
- Woolard, M. D., Wilson, J. E., Hensley, L. L., Jania, L. A., Kawula, T. H., Drake, J. R., and Frelinger, J. A. (2007). *Francisella tularensis*-infected macrophages release prostaglandin E2 that blocks T cell proliferation and promotes a Th2-like response. *J. Immunol.* 178, 2065–2074.
- Wu, T. H., Hutt, J. A., Garrison, K. A., Berliba, L. S., Zhou, Y., and Lyons, C. R. (2005). Intranasal vaccination induces protective immunity against intranasal infection with virulent *Francisella tularensis* biovar A. *Infect. Immun.* 73, 2644–2654.
- Wu, T. H., Zsemlye, J. L., Statom, G. L., Hutt, J. A., Schrader, R. M., Scrymgeour, A. A., and Lyons, C. R. (2009). Vaccination of Fischer 344 rats against pulmonary infections by *Francisella tularensis* type A strains. *Vaccine* 27, 4684–4693.
- Yee, D., Rhinehart-Jones, T. R., and Elkins, K. L. (1996). Loss of either CD4<sup>+</sup> or CD8<sup>+</sup> T cells does not affect the magnitude of protective immunity to an intracellular pathogen, *Francisella tularensis* strain LVS. *J. Immunol.* 157, 5042–5048.
- Yu, J. J., Goluguri, T., Guentzel, M. N., Chambers, J. P., Murthy, A. K., Klose, K. E., Forsthuber, T. G., and Arulanandam, B. P. (2010). *Francisella tularensis* T-cell antigen identification using humanized HLA-DR4 transgenic mice. *Clin. Vaccine Immunol.* 17, 215–222.
- Yu, J. J., Raulie, E. K., Murthy, A. K., Guentzel, M. N., Klose, K. E., and Arulanandam, B. P. (2008). The presence of infectious extracellular *Francisella tularensis* subsp. *novicida* in murine plasma after pulmonary challenge. *Eur. J. Clin. Microbiol. Infect. Dis.* 27, 323–325.
- Zhang, D., Kuolee, R., Harris, G., Zhang, Q., Conlan, J. W., and Chen, W. (2008). Lymphotoxin-alpha plays only a minor role in host resistance to respiratory infection with virulent type A *Francisella tularensis* in mice. *Mediators Inflamm.* 2008, 239740.

**Conflict of Interest Statement:** The authors declare that the research was conducted in the absence of any commercial or financial relationships that could be construed as a potential conflict of interest.

Received: 17 December 2010; accepted: 01 February 2011; published online: 16 February 2011.

Citation: Cowley SC and Elkins KL (2011) Immunity to *Francisella*. *Front. Microbio.* 2:26. doi: 10.3389/fmicb.2011.00026

This article was submitted to *Frontiers in Cellular and Infection Microbiology*, a specialty of *Frontiers in Microbiology*.

Copyright © 2011 Cowley and Elkins. This is an open-access article subject to an exclusive license agreement between the authors and Frontiers Media SA, which permits unrestricted use, distribution, and reproduction in any medium, provided the original authors and source are credited.