



First Large-Scale Eastern Mediterranean and Black Sea Stock Assessment Reveals a Dramatic Decline

Nazli Demirel^{1*}, Mustafa Zengin² and Aylin Ulman³

¹ Department of Marine Biology, Institute of Marine Sciences and Management, Istanbul University, Istanbul, Turkey, ² Central Fisheries Research Institute, Yomra, Turkey, ³ Mersea Marine Conservation Consulting, Fethiye, Turkey

OPEN ACCESS

Edited by:

Tomaso Fortibuoni,
Higher Institute for Environmental
Protection and Research (ISPRA), Italy

Reviewed by:

Marianna Giannoulaki,
Hellenic Centre for Marine Research
(HCMR), Greece
Ekin Akoglu,
Middle East Technical University,
Turkey

*Correspondence:

Nazli Demirel
ndemirel@istanbul.edu.tr

Specialty section:

This article was submitted to
Marine Fisheries, Aquaculture
and Living Resources,
a section of the journal
Frontiers in Marine Science

Received: 03 July 2019

Accepted: 07 February 2020

Published: 21 February 2020

Citation:

Demirel N, Zengin M and Ulman A
(2020) First Large-Scale Eastern
Mediterranean and Black Sea Stock
Assessment Reveals a Dramatic
Decline. *Front. Mar. Sci.* 7:103.
doi: 10.3389/fmars.2020.00103

The Mediterranean Sea is classified as a “data-poor” region in fisheries due to its low number of assessed stocks given its biodiversity and number of exploited species. In this study, the CMSY method was applied to assess the status and exploitation levels of 54 commercial fish and invertebrate stocks belonging to 34 species fished by Turkish fleets in the Eastern Mediterranean (Levantine) and Black Seas, by using catch data and resilience indices. Most of these marine taxa currently lack formal stock assessments. The CMSY method uses a surplus production model (SPM), based on official catch statistics and an abundance index derived from scientific surveys. The SPM estimates maximum sustainable yield (MSY), fishing mortality (F), biomass (B), fishing mortality to achieve sustainable catches (F_{msy}), and the biomass to support sustainable catches (B_{msy}). Our results show the estimated biomass values for 94% of the stocks were lower than the required amount to support sustainable fisheries (B_{msy}). Of the 54 stocks, 85% of them can be deemed as overfished; two stocks were not subject to overfishing (*Sardina pilchardus* and *Trachurus mediterraneus* in the Marmara Sea) while only one stock (*Sprattus sprattus* in the Black Sea) is healthy and capable of producing MSY. Annual values of the stock status indicators, F/F_{msy} and B/B_{msy} , had opposing trends in all regions, suggesting higher stock biomasses could only be achieved if fishing mortality is drastically reduced. Recovery times and levels were then explored under four varying F/F_{msy} scenarios. Under the best-case scenario (i.e., $F = 0.5F_{msy}$), over 60% of the stocks could be rebuilt by 2032. By contrast, if normal fishing practices continue as usual, all stocks will soon be depleted [if not already] ($F = 0.95F_{msy}$), whose recover may be impossible at later dates. The results of this study are supported by previous regional assessments confirming the overexploitation of Turkish fisheries is driving the near-total collapse of these marine wild fisheries. Hence, the need to urgently rebuild Turkey’s marine fisheries ought to be prioritized to ensure their future viability.

Keywords: stock status, data-poor stocks, CMSY, recovery, Turkey, fisheries management

INTRODUCTION

Fisheries can effectively be managed if there is sufficient scientific understanding of the current biomasses and trends of fish stocks. However, because most stocks lack robust assessments, practical advice for them, and hence management capabilities, are impaired. The main element of management frameworks in the adoption of adequate multi-annual management plans (MAPs) and fishery standards according to the Marine Stewardship Council (MSC) is stock assessment (Aranda et al., 2019). However, stock assessments are understood to be costly and so they are not usually set as a priority for less-developed nations (Cope and Punt, 2009). Thus, for the majority of stocks, only time-series of landings data exists and some biological information on harvested species, such as their fecundity, length-at-maturity, growth rates (Froese and Pauly, 2019); this dearth of knowledge has compromised the ability to manage them.

The proportion of stocks that are routinely and regularly assessed is greater in the Northeast Atlantic (Cardinale et al., 2013) than in the Mediterranean and Black Seas (Leonart, 2015; Stergiou et al., 2016). This disparity is mainly due to the multi-species nature of fisheries in the Mediterranean (Leonart and Maynou, 2003), and the more advanced fisheries management capacities of Northern European countries. Consequently, the Mediterranean and Black Seas are generally classified as “data-poor regions,” stemming from a combination of very few empirically assessed stocks and the little landings and biological data available (Pilling et al., 2008). However, the situation has improved slightly since 2010, as more stocks began to undergo assessments (Colloca et al., 2013), but the quality of these data must still be critically improved upon, especially for the “extremely data-poor” Eastern Mediterranean (Tsikliras et al., 2015).

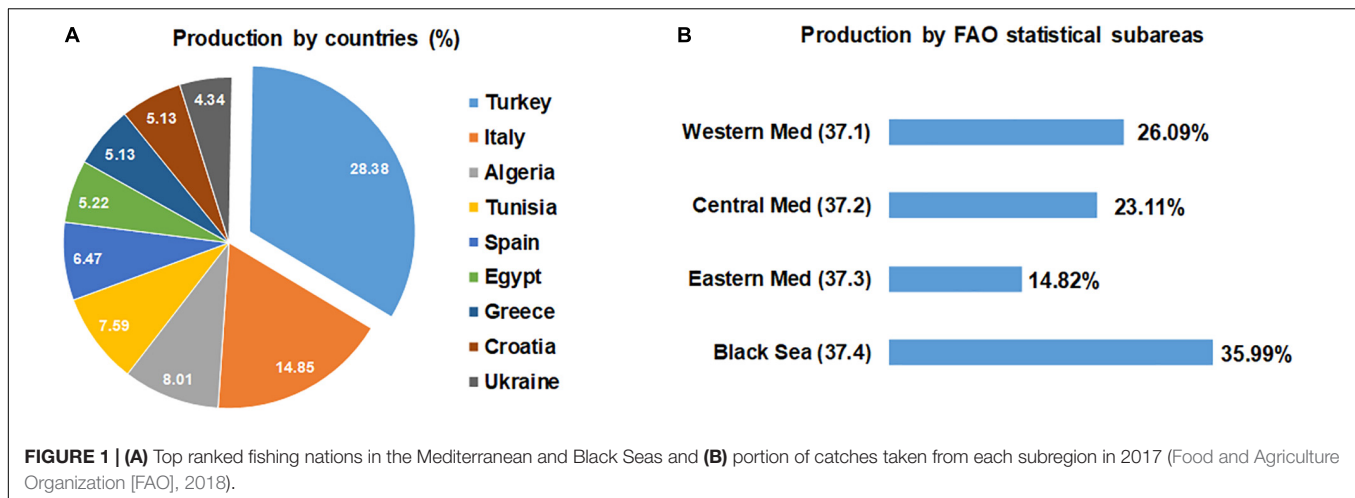
Data-poor regions require a different approach to stock assessment and fisheries management that deviates from classical age-based models, by incorporating novel techniques designed to produce fisheries reference points when biological data are limited and catch/biomass time series are short or incomplete (Froese et al., 2017). The “Surplus Production Model” (SPM) demands the least amount of input data compared to other models for estimating Maximum Sustainable Yield [MSY] (Winker et al., 2018). Although SPM has its limitations, such as not incorporating the size or age structure of a stock’s population (Wang et al., 2014), the model does provide key stock status indicators (i.e., current biomass and fishing mortality) and related fisheries reference points (Bmsy and Fmsy) enabling the formulation of species’ stock assessments in data-limited regions (Punt and Szuwalski, 2012; Froese et al., 2017). Recent improvements to the SPM such as its implementation of Bayesian inferential statistics (McAllister et al., 2001) now provide a realistic estimation of stock biomass relative to carrying capacity (B/k). Establishing fisheries reference points and stock status indicators (F/Fmsy and B/Bmsy) can promote effective management toward achieving sustainability. The main objective of both the EU Common Fisheries Policy (CFP) and the General Fisheries Commission for the Mediterranean (GFCM) is to manage fish stocks so they attain MSY by 2020, at the latest,

to deliver the highest possible long-term catches. Additionally, the EU’s “Marine Strategy Framework Directive” (MSFD, 2008) main criteria for assigning “Good Environmental Status” (GES) for fisheries is that fishing mortality (F) does not exceed the level (Fmsy) producing MSY, Spawning Stock Biomass (SSB) is consistent with the level associated with MSY, and the proportion of adult fish is high enough to ensure stock renewability. Since Turkey is now improving its capacities and initiatives in line with this directive, stock sustainability is indeed a vital short-term goal.

Background on the Development and Changes in the Turkish Fisheries

Turkey is one of the strongest fishing countries in the Mediterranean (Figure 1A), mostly owing to its anchovy catch from the Black Sea (Figure 1B). The main controls currently implemented as management measures in Turkey include the following (Resmî Gazete, 2016, Sayı: 29800 #2016/35): (i) Temporal industrial fishing bans in the Black and Marmara Seas from April 15 to September 1, and a spatial trawling ban in the Marmara Sea and the Bosphorus and Dardanelles Straits (Turkish Strait System-TSS); (ii) Minimum Landing Size (MLS) regulations for most commercial taxa; (iii) Vessel licensing restrictions; (iv) Minimum mesh size regulations; and (v) Protected species (i.e., dolphins [Delphinidae], monk seals [Phocidae], sponges [Porifera], sturgeons [Acipenseridae], grouper [Epinephelinae], and several sharks and rays [Elasmobranchii]). Additionally, catch quotas were previously implemented for the striped Venus clam (*Chamelea gallina*) in the Black Sea and for the bluefin tuna (*Thunnus thynnus*) in the Mediterranean. The bluefin tuna quota is still operational, along with a recent regulation for swordfish *Xiphias gladius*, both of which are mandated by the International Commission for the Conservation of Atlantic Tunas (ICCAT).

The concept of “Fishing down marine food webs” (Pauly et al., 1998) is clearly exemplified in Turkey. There, fishers first depleted the most profitable stocks before moving on to the next lesser-valued stocks, until left with smaller and less economically valuable taxa. Prior to the development of industrial fisheries in the 1970s, fishers could catch as much swordfish, bluefin tuna, Atlantic mackerel, Atlantic chub mackerel, horse mackerels, and bluefish as they could carry (Ulman and Pauly, 2016). However, in 1980, the Turkish economy was transformed, from a semi-state controlled one to a free market economy. This new economy sought rapid development, and, to encourage this, provided bank credit, subsidies and custom duty exemptions to fishers to quickly develop this sector, which propelled it toward unplanned and uncontrolled growth fueling too much fishing effort (Knudsen et al., 2010). The large marine pelagic predators were first removed from the Black and Marmara Seas in the early 1970s (Oğuz, 2017) due to their lucrative value. This was followed by the collapse of demersals in the 1980s namely stingrays, elasmobranchs, flatfish, turbot, and red mullet (Knudsen et al., 2010) when bottom trawling developed in the 1980s, backed by state funding (Can, 2013). Following the collapse of most demersal populations in both seas, bottom trawling became non-operational in the mid to late 2000s due to the ensuing



demersal fish scarcity from depleted stocks, so many boats switched their main harvesting methods to mid-water trawling for pelagic species.

These drastic declines of elasmobranchs and other large predatory fish should alone be a priority concern for management, because large predators are essential for exerting healthy top-down control ecosystem functioning (Myers and Worm, 2003; Steneck, 2012). The benthic food web in the Black Sea littoral area has been heavily disrupted by the considerable loss of its largest predators (i.e., cartilaginous fish; *Squalus acanthias*, *Raja clavata*, *Scophthalmus maximus*), due both to overfishing and high discards; with these top-down controls gone, a noticeable response (Frid et al., 1999) was a greater abundance of crustaceans (especially *Liocarcinus depurator*) in the absence of their demersal predators (Zengin et al., 2014). A benthic non-indigenous species (NIS) sea snail native to the Pacific Northwest, the Rapa whelk *Rapana venosa*, first appeared in the Black Sea in 1946, spreading throughout the basin over the next decade—due to its high abundance and demand in other countries, Turkey has been exporting this species into Asia since the 1980s, in sizeable amounts (Turkish Statistical Institute [TUIK], 2018). It has since become a dominant predatory species in the marine food web (Zengin et al., 2014), in both the Black and Marmara Seas. Other Black Sea top predators include three cetacean species: the Black Sea harbor porpoise (*Phocoena phocoena relicta*), bottlenose dolphin (*Tursiops truncatus*), and short-beaked common dolphin (*Delphinus delphis*), but unfortunately, turbot fisheries using trammel netting commonly results in cetacean by-catch (Birkun and Krivokhizhin, 2011; Tonay, 2016). For this reason, their populations are likely declining, especially that of *P. phocoena relicta*, the dominant Western Black Sea cetacean (Birkun and Frantzis, 2008).

The Levantine Sea also suffered major predator losses, but not as severely as in the Black and Marmara Seas probably due to its larger size and openness. The marine biodiversity of the Eastern Mediterranean has become more tropical since the opening of the Suez Canal in 1869, and its more recent enlargement in 2015, which serves as a migration corridor for NIS of Indo-Pacific origin (European Environment Agency [EEA], 2012). A NIS

is considered invasive when it causes either ecological or economical damage or poses a threat to human health. A few invasive species are problematic for fishers, but none more so than the silver-cheeked toadfish *Lagocephalus sceleratus*, an extremely toxic pufferfish species that has already threatened human life in the Eastern Mediterranean (Kosker et al., 2016) via its neurotoxin tetrodotoxin (TTX), which is 1000 times more poisonous to humans than cyanide (Lago et al., 2015). This pufferfish has since become a dominant species through much of Turkey's south, bringing additional stress to the already marginalized small-scale fishers, particularly by damaging fishing nets, consuming captured fish within nets, and swallowing many longline fishing hooks (Ünal and Göncüoğlu, 2012). Another NIS whose abundance is also increasing in Turkey's southeast is the yellowspotted pufferfish *Torquigener flavimaculosus*. However, not all NIS are pest species, and some even provide economic benefits to fishers, such as Randall's threadfin bream *Nemipterus randalli*, the rabbitfish (*Siganus* spp.), the brushtooth lizardfish *Saurida undosquamis*, the goldband goatfish *Upeneus moluccensis*, the redcoat (squirrelfish) *Sargocentron rubrum*, and the lionfish (*Pterois miles*).

Study Aims

Here we present a first comprehensive stock assessment for Turkey's major and/or important commercial fisheries from the Black Sea, Marmara Sea, and Northeastern Levantine Sea. To do this, we applied the new "CMSY" method (Froese et al., 2017) to 50 years of reported catch data, to better understand the current plight of the stocks and the fishing pressure exerted upon them, to provide management advice and realistic future scenarios aimed at rebuilding these fisheries. The "CMSY" method is a low-cost assessment approach incorporating the "surplus production" stock assessment model, requiring only a long time-series of catch data (Froese et al., 2017). Specifically, this study aimed to: (i) Estimate total current stock biomass (B) and fishing mortality (F) in relation to MSY levels; (ii) Estimate the total potential stock biomass (B_{msy}) and the fishing mortality (F_{msy}) required to produce MSY; (iii) Calculate the differences between current biomasses and potential biomasses (i.e., recovery ability); and,

finally, (iv) Present recovery options for managers by estimating the time needed for stocks' restoration under different fishing mortality scenarios.

MATERIALS AND METHODS

The Dataset

A total of 54 commercial fish and invertebrate stocks belonging to 34 species were analyzed for respective stock status by using a 50 years' time-series of archived national catch data. Turkey began spatially reporting its catches from five distinct marine sub-regions in 1967: Western Black Sea, Eastern Black Sea, Marmara Sea, Aegean Sea, and Levantine Sea (Eastern Mediterranean portion); so this was the initial year used in our study. Underreporting is still serious problem in catch statistics globally. Although the uncertainty levels associated with the Turkish catch data were admittedly higher in the past (50 to 70 years ago), recently this has been somewhat improved upon (see Ulman et al., 2016a,b,c). Nevertheless, national data (from 1967 to 2017) were chosen as the source data to demonstrate how this stock assessment technique could be specifically applied to marine catch data. Catches for the Western and Eastern Black Sea were combined to represent catches from the Black Sea. The Aegean Sea was excluded from this analysis, since its commercial catches are more of an artisanal nature owing to its very narrow continental shelf, and the reporting of industrial catches from there are better represented than small-scale catches (Ulman et al., 2013). Therefore, the Turkish Exclusive Economic Zone (EEZ) in the Black Sea, Marmara Sea and the Levantine Sea constituted the three marine bodies investigated in this study. Stocks were chosen based on either their historical or current commercial influence and/or their hypothesized role in the trophic ecosystem, by relying on expert knowledge. All analyses were done using the R statistical program (v3.6.1; R Core Team, 2014).

Stocks' Status

The CMSY model (Froese et al., 2017) is an open-source stock assessment model for data-limited stocks in fisheries that produces reference points, such as biomass trends, and MSY, based on only catch and species resilience data. Using a time-series of catches can be a very useful indicator of stock status as declining catches generally represent stock reductions, so long as mortality is not decreasing over time, and migration is not a factor (ICES, 2018). Particularly, CMSY-BSM is a Bayesian model that uses a Markov Chain Monte Carlo approach based on the Schaefer SPM (Schaefer, 1954). Species resilience is defined as the "measure of a species' ability to absorb changes in variable states, driving influences and parameters, and still persist" (Holling, 1973). Resilience ranges are assigned by combining several population parameters, such as maximum population growth (rmax), von Bertalanffy growth rate (K), fecundity (total egg production), age of maturity (tm), and maximum age (tmax). The maximum population growth rate (rmax) is defined as the "intrinsic rate of population increase, equal to per capita birth minus death

rate," which is closely related to carrying capacity (k), the latter corresponding to when "a population's per capita growth rate gets diminutively smaller as the population size approaches its maximum limit imposed by the limited resources of the environment" (Rees, 1996). Below is the dynamic formula of the Schaefer model using a Bayesian approach for the best estimate of biomass:

$$B_{t+1} = B_t + r \left(1 - \frac{B_t}{k}\right) B_t - C_t \quad (1)$$

where B is the biomass (metric tons), C is the catch (metric tons), r is the intrinsic rate of population growth, k is the carrying capacity, and t is the time (years).

For a given species, CMSY requires prior information to be specified for resilience and productivity at the beginning and the end of the catch time-series. Priors are the most important part of this model; in particular, the "resilience prior r " (later represented as r) must be estimated by experts for this CMSY analysis. It should be noted that the reliability of stock assessment results is completely dependent upon setting a proper prior range for r . If only catches are known, a prior r is derived from life-history traits and stock assessment records, while a prior range for k can be derived from the maximum catch. Here, prior estimates for r were taken from the "Estimates based on models" section found on summary pages for species in FishBase¹ and SeaLifeBase² (Table 1).

Probable ranges for the maximum intrinsic rate of population increase (r) and for the unexploited population size or carrying capacity (k) are filtered with a Monte Carlo approach, to detect "viable" r - k pairs. Their empirical relation is formulated this way:

$$r \approx 2M \approx 3K \approx 3.3/t_{gen} \approx 9/t_{max} \quad (2)$$

where M is the rate of natural mortality, K is the von Bertalanffy growth parameter, t_{gen} is the generation time, and t_{max} is the maximum age (Froese et al., 2017). The CMSY method incorporates a routine for estimating wide (uniform) priors for k (Froese et al., 2017):

$$k_{low} = \left(\frac{C_{max}}{r_{high}}\right); k_{high} = \left(\frac{4C_{max}}{r_{low}}\right)_t$$

$$k_{low} = \left(\frac{2C_{max}}{r_{high}}\right); k_{high} = \left(\frac{12C_{max}}{r_{low}}\right)_t \quad (3)$$

where k_{low} and k_{high} are the lower and upper bounds of the prior range of k ; C_{max} is the recorded maximum catch in the time series; r_{low} and r_{high} are respectively the lower and upper bounds of the range of r values that the CMSY method explores.

Prior ranges for Bt/k (beginning and end of catch time-series) were derived from expert knowledge. Using a Monte Carlo approach, all r - k combinations that are compatible with the life history traits (r , M , K), the catches (C_t), and the

¹www.fishbase.org

²www.sealifebase.org

TABLE 1 | Scientific names, functional groups, and resilience categories from FishBase (and from SeaLifeBase for invertebrates) with prior ranges as input parameters for r (intrinsic rate of population), based on classification of resilience and for relative biomass (B/k) depending on the depletion status.

Scientific name	Stock name	Functional group	Resilience category	Prior ranges for r	Relative biomass category (depletion)	Prior ranges for B/k
<i>Engraulis encrasicolus</i>	Anchovy	Plankton feeders	Medium	0.39–0.91	Nearly unexploited	0.8–1.0
<i>Sardina pilchardus</i>	Sardine		Medium	0.40–0.90	Nearly unexploited	0.8–1.0
<i>Sprattus sprattus</i>	Sprat		Medium	0.32–0.74	Nearly unexploited	0.8–1.0
<i>Trachurus mediterraneus</i>	MedHMack		Medium	0.33–0.76	Nearly unexploited	0.8–1.0
<i>Trachurus trachurus</i>	HorseMack		Medium	0.31–0.72	Nearly unexploited	0.8–1.0
<i>Scomber colias</i>	AChub		Medium	0.39–0.90	Nearly unexploited	0.8–1.0
<i>Scomber scombrus</i>	Mackerel		Medium	0.31–0.75	Medium depletion	0.2–0.6
<i>Boops boops</i>	Bogue		Medium	0.39–0.89	Nearly unexploited	0.8–1.0
<i>Alosa immaculata</i>	Shad		Medium	0.20–0.80	Nearly unexploited	0.8–1.0
<i>Spicara smaris</i>	Picarel		Medium	0.28–0.63	Medium depletion	0.2–0.6
<i>Pomatomus saltatrix</i>	Bluefish	Large predators	Medium	0.44–1.01	Nearly unexploited	0.8–1.0
<i>Sarda sarda</i>	Bonito		Medium	0.37–0.85	Low depletion	0.4–0.8
<i>Merlangius merlangus</i>	Whiting		Medium	0.33–0.74	Nearly unexploited	0.8–1.0
<i>Merluccius merluccius</i>	Hake		Medium	0.35–0.80	Nearly unexploited	0.8–1.0
<i>Belone belone</i>	Garfish		Medium	0.29–0.65	Medium depletion	0.2–0.6
<i>Dicentrarchus labrax</i>	Seabass		Medium	0.35–0.84	Low depletion	0.4–0.8
<i>Lichia amia</i>	Leerfish		Medium	0.34–0.76	Nearly unexploited	0.8–1.0
<i>Epinephelus marginatus</i>	Grouper		Low	0.24–0.55	Nearly unexploited	0.8–1.0
<i>Scophthalmus maximus</i>	Turbot	Benthic fish and invertebrates	Medium	0.33–0.74	Low depletion	0.4–0.8
<i>Mullus barbatus barbatus</i>	Mullet		Medium	0.42–1.04	Low depletion	0.4–0.8
<i>Chamelea gallina</i>	Venus		Medium	0.32–0.76	Low depletion	0.4–0.8
<i>Mullus surmuletus</i>	Surmullet		Medium	0.20–0.80	Medium depletion	0.2–0.6
<i>Diplodus annularis</i>	Annular		Medium	0.20–0.80	Nearly unexploited	0.8–1.0
<i>Oblada melanura</i>	Saddled		Medium	0.52–1.17	Low depletion	0.4–0.8
<i>Sparus aurata</i>	Seabream		Medium	0.37–0.85	Low depletion	0.4–0.8
<i>Argyrosomus regius</i>	Meager		Low	0.10–0.49	Nearly unexploited	0.8–1.0
<i>Dentex dentex</i>	Dentex		Low	0.24–0.61	Nearly unexploited	0.8–1.0
<i>Conger conger</i>	Conger		Low	0.23–0.53	Nearly unexploited	0.8–1.0
<i>Raja clavata</i>	Raja		Low	0.07–0.45	Medium depletion	0.2–0.6
<i>Squatina squatina</i>	Angelshark		Low	0.16–0.47	Medium depletion	0.2–0.6
<i>Squalus acanthias</i>	Dogfish		Low	0.05–0.50	Medium depletion	0.2–0.6
<i>Parapenaeus longirostris</i>	RoseShrimp		High	0.68–1.54	Nearly unexploited	0.8–1.0
<i>Octopus vulgaris</i>	Octopus		High	0.53–1.21	Nearly unexploited	0.8–1.0
<i>Sepia officinalis</i>	Cuttlefish		Medium	0.37–0.84	Low depletion	0.4–0.8

expert knowledge (Bt/k) were identified. Therefore, we followed generic rules established by Froese et al. (2017), for setting the biomass priors based on general available knowledge of the fisheries. Rules for the initial prior biomass range assumed a high initial biomass (0.5–0.9 k) if the time-series of catch data started before 1960, when most fisheries were recovering after World War II (Pauly et al., 2002; Froese et al., 2017; **Supplementary Material**), and medium (0.2–0.6 k) biomass after 1960. For the final biomass, its range was set up using the last catch relative to maximum catch. Final biomass range is set to high if this ratio was over 0.7 and set to low if it was lower than 0.3. Since there is no proper stock assessment research or CPUE data for Turkish stocks available for use, an automatic selection of low, medium, or high prior biomass ranges on the simple default rules described above were used for our CMSY analyses.

In the Schaefer model, $0.5 r_{max} = F_{msy}$ and $0.5 k = B_{msy}$ (Ricker, 1975). F_{msy} is the maximum rate of fishing mortality (i.e., the proportion of caught fish) that eventually ensues, usually over a very long time frame, in a population size of B_{msy} (the resulting stock biomass from fishing at F_{msy}). The outputs of the analyses produce proxies for MSY, key reference points such as fishing mortality that can produce MSY (F_{msy}), biomass that can produce MSY (B_{msy}), and indicators such as relative stock size (B/B_{msy}) and fishing mortality (F/F_{msy}) to better understand current stock trends and status. We also present cumulative results for biomass and MSY, and median fishing mortality by main functional groups (benthic fish and invertebrates, small pelagics, benthopelagics, and large predators) according to sea location.

These criteria were used for evaluating stock status: severely depleted ($B < 0.2B_{msy}$), critical condition ($B < 0.2B_{msy}$),

$F > F_{msy}$), exploited outside safe biological limits ($B < 0.5B_{msy}$), subject to overfishing ($F > F_{msy}$), recovering ($B < B_{msy}$, $F \leq F_{msy}$), and healthy ($B > B_{msy}$, $F \leq F_{msy}$) (Table 2). Overall, 16 stocks were assessed from the Black Sea, 17 stocks from the Marmara Sea, and 21 stocks from the Levantine Sea.

Expected Time to Rebuild Overfished Stocks

In addition to the F_{msy} estimation for each stock, recovery options were also considered according to stock biomass (projected for 2018) under four fishing mortality scenarios for 15 year (until 2032) (Table 3). The time needed to rebuild stocks so that they are at B_{msy} was calculated using outputs of the CMSY model. Thus, the recovery time needed to reach the biomass level (B_{msy}) capable of producing MSY, is a function of depletion and remaining fishing mortality ($F_{msy} - F$), and it was calculated for F equal to $0.5 F_{msy}$ for every stock according to the this formula:

$$\Delta t = \frac{1}{2F_{msy} - F} \ln \left(\frac{\frac{B_{msy}}{B_{cur}} 2 \left(1 - \frac{F}{2F_{msy}} \right) - 1}{2 \left(1 - \frac{F}{2F_{msy}} \right) - 1}} \right) \quad (4)$$

For a given stock, its potential catch was calculated as the difference between the current catch and the catch at MSY. The final value was conservatively reduced by 10% to account for stocks that cannot reach MSY at the same time.

The CMSY model output showed that, in 2017, of the 54 assessed stocks, 29 stocks (54%) were in critical condition and/or being severely depleted ($B < 0.2B_{msy}$), yet all are

TABLE 3 | Four scenarios using different fishing mortality ratios according to exploitation level of stocks.

Scenarios	Fishing mortality (F)	Biomass (B)
1	0.50	$< 0.2B_{msy}$
2	0.60	$\leq 0.5B_{msy}$
3	0.80	$\geq 0.5B_{msy}$
4	0.95	Control ($\sim B_{msy}$)

still being fished (Figure 2). Another 17 stocks (31%) were exploited outside safe biological limits ($0.2B_{msy} < B < 0.5B_{msy}$), while five stocks (9%) are over $0.5 B_{msy}$ and two stocks (*Sardina pilchardus* and *Trachurus mediterraneus* from the Marmara Sea) are not overfished and close to a sustainable level ($F \leq F_{msy}$ and $B < B_{msy}$), with just one stock of the 54 seemingly sustainable (*Sprattus sprattus* from Black Sea) (Figure 2 and Table 4). Overall, 46 stocks (85%) were overfished. Catches in 2017 were below the maximum sustainable yield ($C/MSY < 1$) for 52 stocks—the Marmara Sea sardine being very close to MSY—and above the MSY for the remaining two stocks (Atlantic mackerel and striped Venus clam). We provide plotted outputs of the CMSY models for each stock assessment and its associated management information in the **Supplementary Material**.

Outputs of CMSY analyses by main functional groups (benthic fish and invertebrates, large predators, pelagic plankton feeders) are presented as summed catches, median biomass relative to the level that can produce the MSY (B/B_{msy}), and median

TABLE 2 | Definition of stock status according to fisheries reference points.

Reference points	Definition
$B > B_{msy}$ and $F \leq F_{msy}$	Healthy (not subject to overfishing and having a biomass higher than necessary to produce the maximum sustainable yield)
$B < B_{msy}$ and $F \leq F_{msy}$	Recovering (not subject to overfishing and having a biomass very close to one that can produce the maximum sustainable yield)
$F > F_{msy}$	Subject to overfishing (fishing mortality higher than the one that can produce the maximum sustainable yield)
$B \leq 0.5 B_{msy}$	Exploited outside safe biological limits (biomass under half that required to produce the maximum sustainable yield, $0.5 B_{msy}$ is B_{pa})
$F > F_{msy}$ and $B \leq 0.5 B_{msy}$ or $B \leq 0.2 B_{msy}$	Critical condition (being outside safe biological limits and subject to overfishing or being severely depleted)
$B \leq 0.2 B_{msy}$	Severely depleted (biomass below 20% of that can produce the maximum sustainable yield)

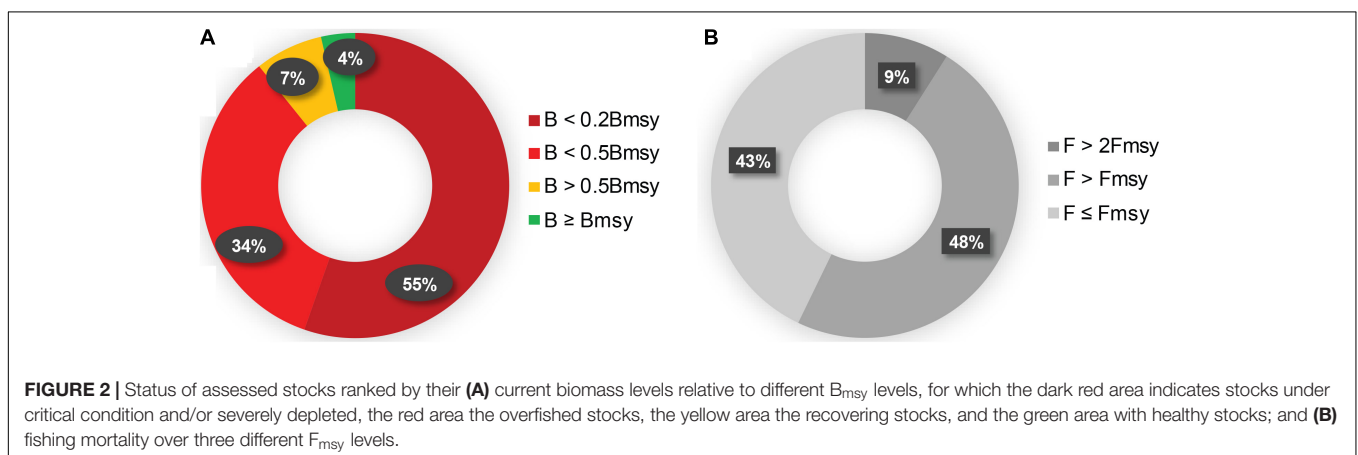


TABLE 4 | CMSY outputs for MSY, B_{msy} , F_{msy} , and r with stock indicators B/B_{msy} and F/F_{msy} for stocks in Turkish seas from 2017.

Scientific name	Region	Year	MSY (t)	Catch (t) 2017	F_{msy}	F/F_{msy}	B_{msy} (t)	B/B_{msy}
<i>Engraulis encrasicolus</i>	Black Sea	2017	232468	133767	0.27	1.06	853250	0.54
<i>Sprattus sprattus</i>	Black Sea	2017	49104	33944	0.28	0.54	166654	1.34
<i>Trachurus mediterraneus</i>	Black Sea	2017	65772	4257	0.22	4.15	289030	0.09
<i>Trachurus trachurus</i>	Black Sea	2017	8035	2167	0.21	2.35	38382	0.24
<i>Scomber colias</i>	Black Sea	2016	6788	1	0.29	0.01	23563	0.07
<i>Alosa immaculata</i>	Black Sea	2017	1181	620	0.15	2.62	8159	0.31
<i>Spicara smaris</i>	Black Sea	2017	1217	5	0.19	0.32	6509	0.08
<i>Pomatomus saltatrix</i>	Black Sea	2017	11707	997	0.34	1.24	34346	0.18
<i>Sarda sarda</i>	Black Sea	2017	13378	5570	0.29	1.43	47019	0.38
<i>Merlangius merlangus</i>	Black Sea	2017	14545	7416	0.21	1.70	69704	0.38
<i>Belone belone</i>	Black Sea	2017	2117	99	0.17	3.36	11671	0.09
<i>Scophthalmus maximus</i>	Black Sea	2017	2617	152	0.23	2.59	11443	0.11
<i>Mullus barbatus barbatus</i>	Black Sea	2017	2636	329	0.26	2.67	10259	0.15
<i>Raja clavata</i>	Black Sea	2017	883	12	0.07	0.78	13382	0.09
<i>Squalus acanthias</i>	Black Sea	2014	2479	1	0.07	0.01	40437	0.09
<i>Chamelea gallina</i>	Black Sea	2017	30830	34941	0.28	1.20	107524	0.95
<i>Engraulis encrasicolus</i>	Marmara Sea	2017	18438	8341	0.34	1.60	54005	0.38
<i>Sardina pilchardus</i>	Marmara Sea	2017	6285	5685	0.34	0.94	18440	0.97
<i>Trachurus trachurus</i>	Marmara Sea	2017	2969	1729	0.24	3.06	12332	0.31
<i>Trachurus mediterraneus</i>	Marmara Sea	2017	4908	2718	0.25	0.96	20327	0.57
<i>Scomber colias</i>	Marmara Sea	2017	9492	147	0.27	1.48	34331	0.07
<i>Scomber scombrus</i>	Marmara Sea	2017	261	387	0.20	7.31	1304	0.32
<i>Pomatomus saltatrix</i>	Marmara Sea	2017	3983	720	0.33	2.44	12502	0.19
<i>Sarda sarda</i>	Marmara Sea	2017	2444	1103	0.24	2.49	10233	0.30
<i>Merlangius merlangus</i>	Marmara Sea	2017	6618	79	0.29	0.70	5427	0.09
<i>Merluccius merluccius</i>	Marmara Sea	2017	1313	248	0.24	2.70	22573	0.19
<i>Scophthalmus maximus</i>	Marmara Sea	2017	158	15	0.26	1.59	605	0.17
<i>Mullus barbatus barbatus</i>	Marmara Sea	2017	216	3	0.31	1.14	701	0.08
<i>Mullus surmuletus</i>	Marmara Sea	2017	605	76	0.14	1.98	4267	0.18
<i>Raja clavata</i>	Marmara Sea	2017	159	145	0.10	1.51	406	0.58
<i>Squalus acanthias</i>	Marmara Sea	2017	191	11	0.06	2.93	3366	0.10
<i>Squatina squatina</i>	Marmara Sea	2017	46	1	0.11	1.29	1586	0.09
<i>Parapenaeus longirostris</i>	Marmara Sea	2017	3702	1389	0.60	1.10	6170	0.41
<i>Sardina pilchardus</i>	Levantine Sea	2017	5426	3274	0.34	1.08	15739	0.56
<i>Trachurus trachurus</i>	Levantine Sea	2017	440	227	0.26	3.15	1709	0.28
<i>Trachurus mediterraneus</i>	Levantine Sea	2017	687	234	0.27	2.22	2565	0.27
<i>Boops boops</i>	Levantine Sea	2017	491	237	0.27	2.24	1810	0.33
<i>Sarda sarda</i>	Levantine Sea	2017	595	381	0.32	1.27	1894	0.50
<i>Pomatomus saltatrix</i>	Levantine Sea	2017	275	77	0.33	2.09	844	0.26
<i>Merlangius merlangus</i>	Levantine Sea	2017	403	78	0.27	2.95	1529	0.18
<i>Dicentrarchus labrax</i>	Levantine Sea	2017	675	11	0.27	1.04	2561	0.09
<i>Epinephelus marginatus</i>	Levantine Sea	2017	245	1	0.19	0.25	1296	0.09
<i>Lichia amia</i>	Levantine Sea	2017	678	169	0.23	4.29	2980	0.17
<i>Mullus barbatus barbatus</i>	Levantine Sea	2017	1095	632	0.29	1.74	3866	0.40
<i>Mullus surmuletus</i>	Levantine Sea	2017	808	17	0.39	1.43	2100	0.09
<i>Argyrosomus regius</i>	Levantine Sea	2017	86	10	0.10	5.30	914	0.10
<i>Dentex dentex</i>	Levantine Sea	2017	78	4	0.18	2.60	433	0.10
<i>Conger conger</i>	Levantine Sea	2016	296	108	0.18	3.28	1707	0.23
<i>Diplodus annularis</i>	Levantine Sea	2017	102	24	0.14	5.32	762	0.15
<i>Oblada melanura</i>	Levantine Sea	2017	99	8	0.34	1.37	296	0.17
<i>Sparus aurata</i>	Levantine Sea	2017	604	223	0.24	1.94	2551	0.31
<i>Squalus acanthias</i>	Levantine Sea	2017	155	3	0.05	0.89	3074	0.10
<i>Octopus vulgaris</i>	Levantine Sea	2017	160	3	0.39	0.89	409	0.10
<i>Sepia officinalis</i>	Levantine Sea	2017	813	673	0.31	1.37	2591	0.60

fishing mortality to the MSY level (F/F_{msy}) for stocks according to seas (Black Sea, Marmara Sea, Levantine Sea) (Figure 3). Lastly, fishing mortality (F/F_{msy}) and biomass state (B/B_{msy}), respectively, are presented for each assessed stock by Turkish sea (Figure 4).

Black Sea

The 16 Black Sea stocks analyzed consisted of 13 teleosts, two elasmobranchs, and one invertebrate. Functionally, they were grouped as follows: seven plankton feeders, four large predators, and five benthic fish and invertebrates. Biomasses of all these stocks have gradually decreased since the 1980s, and, from about 1990, all stocks can be deemed unhealthy, with the exception of sprat that only became a target species in the late 1980s. Beginning in the 1980s, fishing mortality for all 16 stocks exceeded the level of mortality needed to produce MSY, and fishing mortality continued to increase over time. In 2017, 15 stocks (93.8%) were subject to ongoing overfishing of which nine (55%) were fished outside their safe biological limits (Figures 3A–C, 4A and Table 4).

Marmara Sea

Of the 17 stocks analyzed for the Sea of Marmara, 13 were teleosts, plus three elasmobranchs and one invertebrate. Their functional grouping was as follows: six plankton feeders, four

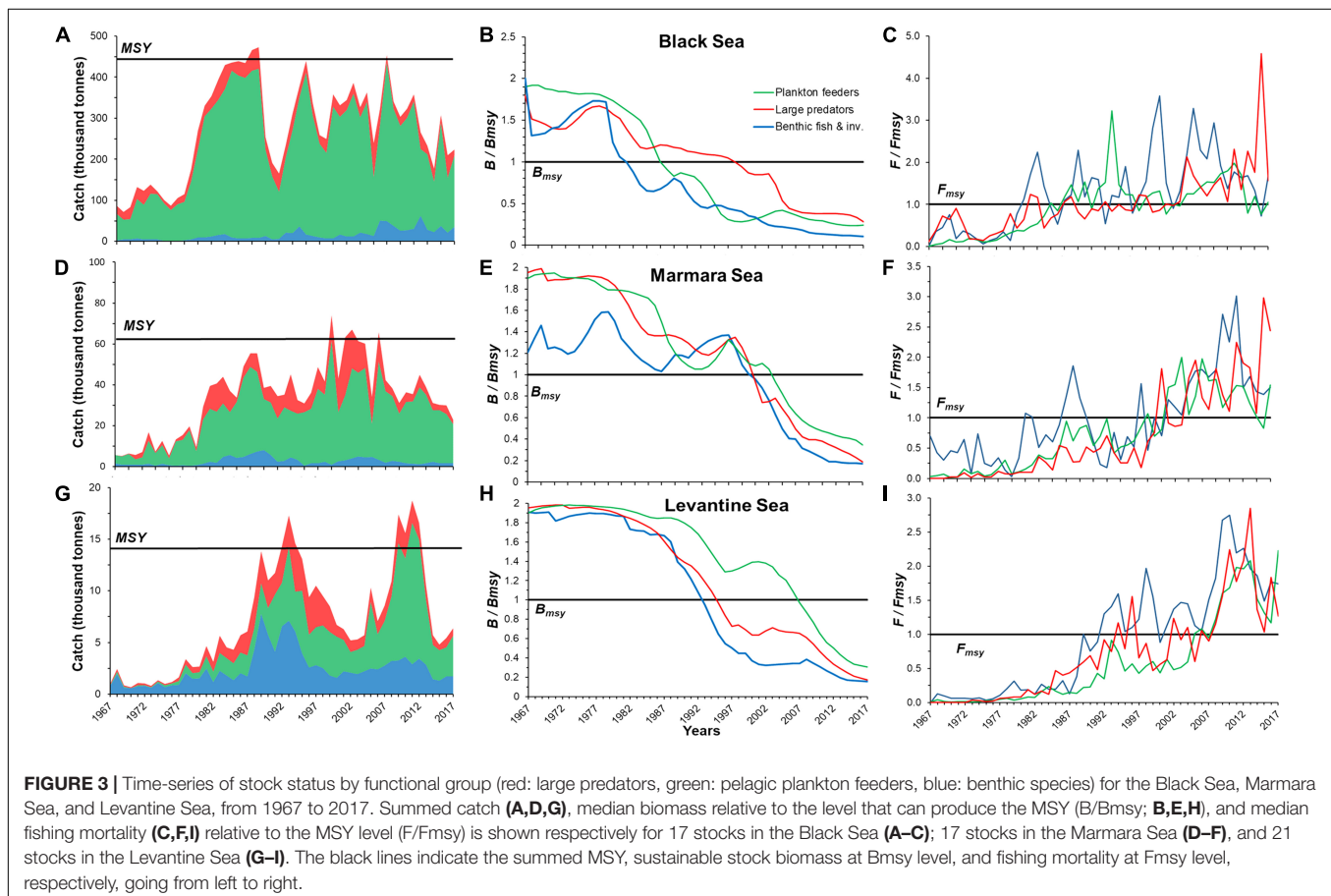
large predators, and seven benthic fish and invertebrates. Two stocks (sardine and Mediterranean horse mackerel) still retain a moderate stock status, but because each is being fished at maximum mortality ($F = F_{msy}$), this leaves little prey for their predators. Ten stocks were subject to ongoing overfishing and 14 stocks were fished outside safe biological limits (85%), of which nine are in critical condition. After 2005, fishing mortality was at a much higher, dangerous level than what is needed to produce MSY, and biomass values were critically low for all stocks, as confirmed by declining catches (Figures 3D–F, 4B and Table 4).

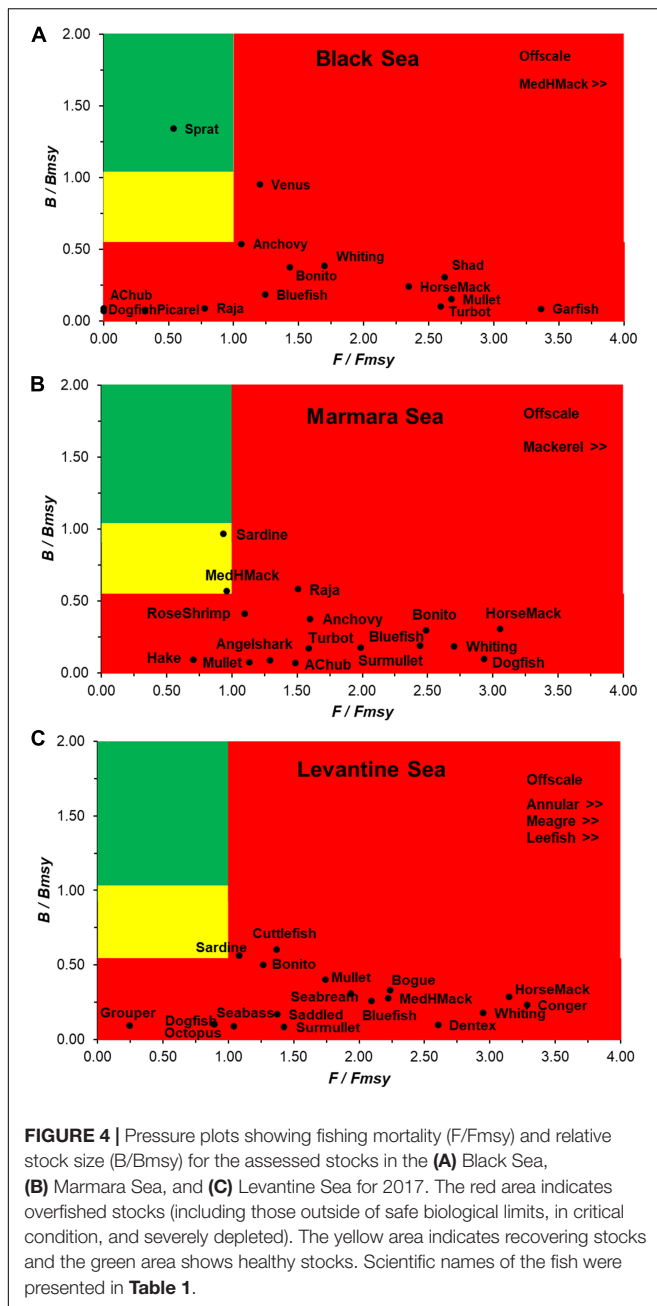
Levantine Sea

For the Levantine Sea, the 21 stocks analyzed were composed of 18 teleosts, one elasmobranch, and two invertebrates. The dominant functional group was benthic fish and invertebrates with 11 stocks, followed by six large predators and four plankton feeders. Of the 17 stocks (90%) exploited outside safe biological limits, 10 of them are in critical condition. Since the mid-1990s, biomasses and catches for these three functional groups continued to decrease while fishing mortality increased (Figures 3G–I, 4C and Table 4).

Future Scenarios

Future fishing scenarios were projected for four different fishing mortality reduction possibilities (50, 40, 20, and 5% of the stocks'





respective F_{msy}), according to the estimated biomass of the latest year that stocks could reach the biomass necessary to produce MSY (**Figure 5A**) and by reduction in catch necessary for catches to attain an MSY (**Figure 5B**). For the stocks capable of recovery, these scenarios show that if fishing mortality was reduced to $0.5F_{msy}$, 40% of the 54 stocks could reach the B_{msy} level within 10 years, and 60% of them within 15 years. For the $0.6F_{msy}$ scenario, half of the stocks can fully recover by 2032. If fishing mortality is set to $0.8F_{msy}$, within the next 15 years, 30% of stocks can reach the B_{msy} level, for which catch values come closer to MSY levels than under any other options examined. However, a lowering of fishing mortality by only 5% (i.e., the $0.95F_{msy}$

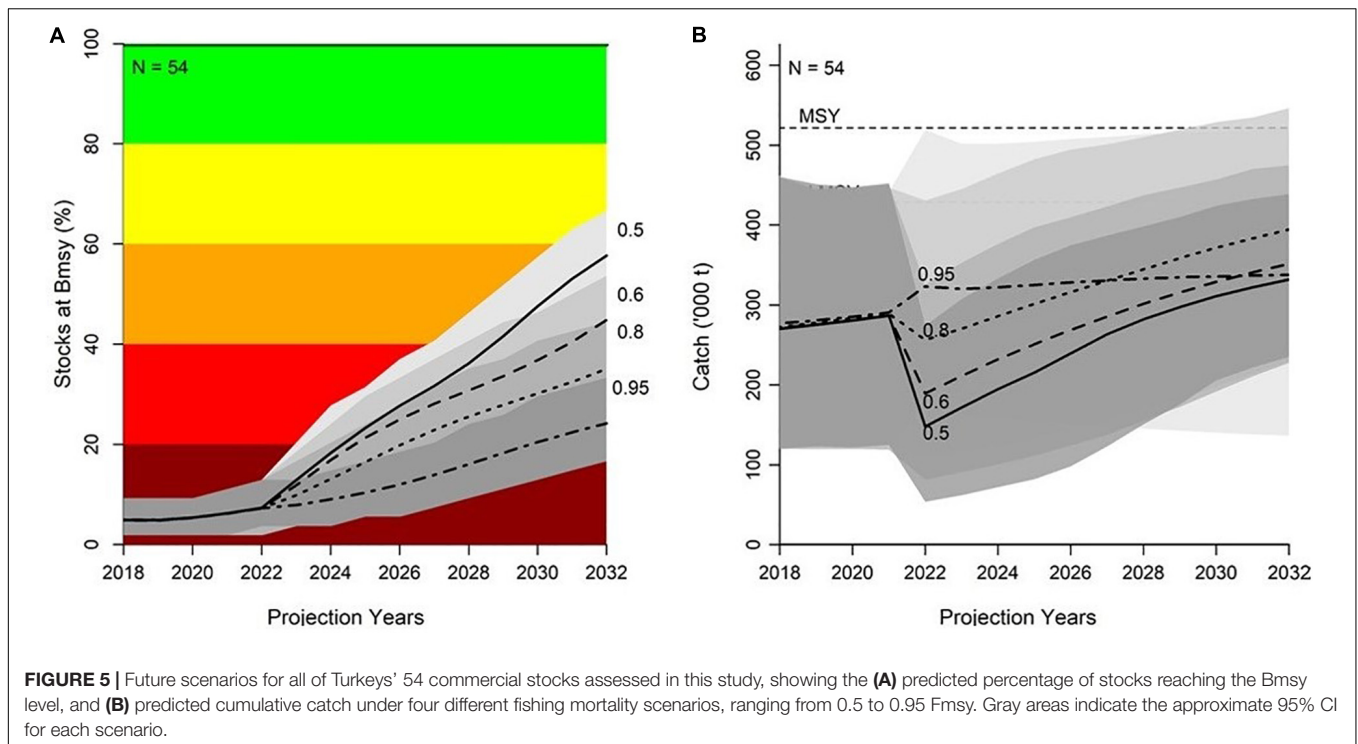
values) would leave stocks overfished and unable to rebuild, while their catches remain similar to present values.

DISCUSSION

This first large-scale stock assessment of Turkish marine fisheries has revealed the impacts on them arising from overexploitation. Fishing mortality has resulted in unsustainable and rapidly declining stocks, which will inevitably cause further stock collapses without prompt management interventions. Of the 54 stocks assessed here, 85% are clearly overexploited ($B < 0.5B_{msy}$), with only Black Sea sprat sustainably fished, and Marmara Sea Mediterranean horse mackerel and sardine near overfishing levels. It must be stressed that sprat is not consumed as a fish item but instead processed into fishmeal to support aquaculture and used in fish oil products (Ceyhan and Emir, 2015). Wild fish are a cheaper, much healthier alternative to farmed fish not requiring the additional culturing input costs, such as feed and placement, and so they should be prioritized over aquaculture fisheries. For the majority of the Turkish commercial fisheries, their stocks need to rebuild to levels near to or equal to their respective MSY. Our investigation of future scenarios shows that rebuilding the fisheries is indeed possible and it can be achieved through a reduction of effort and mortality to levels that allow stocks to reach their MSY (Merino et al., 2012; Froese et al., 2018).

Our results confirm other similar studies conducted in the Mediterranean and the Black Seas. That body of work shows that declines in catches and stock biomasses are a general theme in the region (Merino et al., 2015; Tsikliras et al., 2015; GFCM, 2016; Guillen et al., 2016; Scientific Technical Economic Committee for Fisheries [STECF], 2017; Food and Agriculture Organization [FAO], 2018), with the consensus being that stocks are exploited outside of safe biological limits (Osio et al., 2015). Further, after analyzing all completed stock assessments for the Mediterranean, Colloca et al. (2013) concluded that over 90% of those stocks are overexploited.

The future scenario outputs presented here suggest that, to rebuild Turkey's fisheries, a 50% reduction in mortality is the fastest way, in that over half of the 54 stocks could recover within 15 years. A 40% ($0.6F_{msy}$) reduction would support the full recovery of half of the overexploited stocks by the year 2032. However, a 20% reduction enables less than half of the stocks to recover, but it would increase catches and revenue within 15 years. Conversely, if fishing continues as normal ($F = 0.95F_{msy}$), stocks may not be able to recover later. Firstly, a clear management objective should be identified for which path to pursue rebuilding these stocks. In addition to mortality reductions, regulations on size selectivity are also needed (Colloca et al., 2013). Stocks currently at critical biomass levels may have much slower recovery rates (Neubauer et al., 2013), since a recovery will also depend on life-history strategies and trophic interactions between species (Hutchings and Reynolds, 2004; Audzijonyte and Kuparinen, 2016), especially for slow-growing and less-fecund species (Hutchings, 2000). Across the Mediterranean, young and juvenile



fish, mostly ages 1 and 2 years, comprise the dominant portion of catch compositions because of low size selectivity by fishing gears (Colloca et al., 2013). To help improve the standing stock biomass, size regulation for the conservation of large adult females (Birkeland and Dayton, 2005; Froese et al., 2016) and juveniles, fishing restriction on spawning seasons and ensuring protection of nursery habitats should be used as additional measures to improve recruitment opportunities (Caddy, 2015). In Turkey, most commercial taxa (68% according to the 2016–2020 regulations) already have minimum landing size (MLS) regulations, and strengthening the effectiveness of such MLS measures would be quite easy, namely by improving awareness, controls, and fines (Froese et al., 2018).

Regulating fishing mortality to MSY levels is a true investment for the ecosystem and economy (Sumaila et al., 2012); additionally, species-specific MLS regulations must be effective to support the rebuilding of stocks (Froese et al., 2018). Beddington et al. (2007) noted that the definition of successful management is a combination of biological, economic, social, and political objectives. Aside from the obvious ecological benefits regarding the structure and function of marine ecosystems (Murawski, 2000), the economic benefits of exploiting the Mediterranean fish and invertebrate stocks at or near MSY within an 'Ecosystem Approach to Fisheries' (EAF) framework—proper fishing selectivity, restrictions on fishing gear, fishing season, and fishing areas—are enormous (Sumaila et al., 2012; Colloca et al., 2013). These would guarantee revenues and long-term profitability (Ye et al., 2012; Sumaila et al., 2016), with a view to job security as the long-term goal (Beddington et al., 2007) for the sector. Rebuilding the global fisheries is a costly process, estimated at ca. \$200 billion, because it may include subsidies,

buyback programs, and alternative employment training for fishers, but once stocks reach their MSY levels, profits for the global fishing fleet could increase by ca. \$50 billion per year (Sumaila et al., 2016).

Challenges in Assessing Stocks

While we agree that MSY is a less sophisticated model than, for example, the yield-per-recruit model of Beverton and Holt (1957), the MSY concept was nevertheless chosen as the framework for fisheries management by the CFP. Accordingly, we relied on it to make a first evaluation in Turkey for its future fisheries within the framework of data-limited stocks. Note that our results actually confirm several MSY criticisms: while most managers still believe that fishing at $F = F_{msy}$ is the best option, our results demonstrate that fishing at that level provides the least desirable outcome. Thus, here we proposed fisheries reference points and indicators derived from the SPM for the MSY concept, which provides assessments for highly fluctuating and high-biomass small pelagics, and also for mixed-fisheries in the Mediterranean, which is a pertinent issue due to their biological and ecological traits. We acknowledge there are limits to production models for providing realistic results if high variability is present in stock productivity or catchability have occurred during the time-series under analysis. As a species-specific example, the disappearance of European hake at the end of the 1990s, due to overfishing, is associated with competition from alien species (mainly lizardfish) and changes in hydrographic conditions in the Levantine Sea (Gücü and Bingel, 2011). As a very unique environment, the Black Sea is an important example of a severe marine ecosystem regime shift, initiated by overfishing that started in the 1950s with the

removal of top predators, continued with trophic cascades and eutrophication until the 1980s, followed by an alien ctenophore *Mnemiopsis leidyi* invasion in the 1990s (Daskalov et al., 2007). The Black Sea anchovy fishery is regarded as a very good example of a fishery whose catch is greatly affected by high volatility (Gücü et al., 2017; Libralato et al., 2019). It should also be stressed that fluctuations of small pelagics such as anchovy are more likely to be heavily influenced by climatic variability than by exploitation *per se* (Salihoğlu et al., 2017; Tsikliras et al., 2018). Despite the current lack of operational state indicators for understanding pelagic fish assemblages, the MSFD clearly requires considering the state of the biotic community, the environmental status of pelagic habitats, and the functioning of pelagic components of the food web (Shephard et al., 2014). Another important point: the multi-fleet, multi-species (MF-MS) characteristics of demersal fisheries in the Mediterranean present challenges to achieving MSY for single species under the EAF (Beddington et al., 2007). For example, one species can be targeted by one gear type yet be considered as bycatch by others; or achieving an objective for one species may preclude attaining the objective for another. The fact remains that there is intense competition for resources by nations, sectors, and multi-fleets in the Mediterranean. Colloca et al. (2013) have stated that sudden changes in fishing selectivity and use of Fmsy can be difficult. Hence, the MSY objective alone is insufficient for rebuilding without implementing other supporting measures, such as increasing the size of first capture and better incorporation of the ‘Ecosystem Approach to Fisheries.’

CONCLUSION

Following from this first assessment of 54 data-poor fish and invertebrate stocks exploited by Turkish fleets, we warn that if current levels of overexploitation continue unabated, only the sprat stock will remain a viable fishery in the near future. If swift action is not taken soon, many of these overexploited stocks may become too depleted to ever recover. The Turkish fisheries are plagued with excessively high fishing mortality that depletes standing stocks far below the EU and GFCM targets for sustainable fisheries and Good Environmental Status. Based on these results, to rebuild most of the remaining commercial stocks within 15 years, we suggest that fishing mortality must first be reduced to the Fmsy level, accompanied by the second proposed 40%-effort reduction as the best option. Concerning the other proposed options, the 20%-effort reduction would maximize catches over a much longer time frame, and the

REFERENCES

- Aranda, M., Ulrich, C., Le Gallic, B., Borges, L., Metz, S., Prellezo, R., et al. (2019). *Research for PECH Committee – EU Fisheries Policy – Latest Developments and Future Challenges*. Brussels: European Parliament.
- Audzijonyte, A., and Kuparinen, A. (2016). The role of life histories and trophic interactions in population recovery. *Conserv. Biol.* 30, 734–743. doi: 10.1111/cobi.12651
- Beddington, J. R., Agnew, D. J., and Clark, C. W. (2007). Current problems in the management of marine fisheries. *Science* 316, 1713–1716. doi: 10.1126/science.1137362
- Beverton, R. J. H., and Holt, S. J. (1957). *On the Dynamics of Exploited Fish Populations*. London: FAO.
- Birkeland, C., and Dayton, P. K. (2005). The importance in fishery management of leaving the big ones. *Trends Ecol. Evol.* 20, 356–358. doi: 10.1016/j.tree.2005.03.015
- 50%-effort reduction would achieve sustainability goals in a minimal time frame. But the reduction of fishing mortality should be complemented with other effective management measures, especially improving MLS effectiveness and incorporation of the EAF. These mortality reduction recommendations may appear severe, but the ongoing drastic decline of marine fisheries is not a trivial matter, justifying the necessity of radical policy and intervention.
- We are likely nearing the last opportunity to rebuild the Turkish marine fisheries, considering how many stocks of them are in critical condition, but many fishers will require assistance in the transition out of this sector into another for employment. It also must be stressed that the future scenario predictions presented here are likely overly optimistic considering the other anthropogenic stressors involved, such as the use of destructive fishing techniques (i.e., bottom trawling), by-catch, eutrophication, pollution, invasive species, habitat loss, sea warming, and heavy urbanization, none of which were accounted for in our modeled scenarios. Now that the current and future alarming status of Turkey’s marine fisheries have been clearly presented, this opportunity should be seized upon to rebuild them for long-term viability, so that wild fish persist into the foreseeable future, valued as protein, biodiversity, biotic resistance to stressors, and an integral part of Turkish culture.

DATA AVAILABILITY STATEMENT

All datasets generated for this study are included in the article/**Supplementary Material**.

AUTHOR CONTRIBUTIONS

ND, MZ, and AU collected and organized the data and wrote the manuscript. ND analyzed the data.

ACKNOWLEDGMENTS

ND appreciates methodological advice provided by Rainer Froese.

SUPPLEMENTARY MATERIAL

The Supplementary Material for this article can be found online at: <https://www.frontiersin.org/articles/10.3389/fmars.2020.00103/full#supplementary-material>

- Birkun, A. Jr., and Frantzis, A. (2008). *Phocoena phocoena ssp. Relicta*. In: IUCN 2012. IUCN Red List of Threatened Species. Version 2012.2.
- Birkun, A. Jr., and Krivokhizhin, S. (2011). *Cetacean by-Catch Levels in the Northern Black Sea: Results of Onboard Monitoring Programme*. Report of the 2nd Transversal Working Group on by-catch, Antalya, Turkey, 7–9 December 2011. Roma, RM: General Fisheries Commission for the Mediterranean).
- Caddy, J. F. (2015). Criteria for sustainable fisheries on juveniles illustrated for Mediterranean hake: control the juvenile harvest, and safeguard spawning refugia to rebuild population fecundity. *Sci. Mar.* 79, 287–299. doi: 10.3989/scimar.04230.06A
- Can, K. (2013). *Balık Ağalara Takıldı*. Istanbul: Ekin Grubu.
- Cardinale, M., Dorner, H., Abella, A., Andersen, J. L., Casey, J., Doring, R., et al. (2013). Rebuilding EU fish stocks and fisheries, a process under way? *Mar. Policy* 39, 43–52. doi: 10.1016/j.marpol.2012.10.002
- Ceyhan, V., and Emir, M. (2015). Structural and economic analysis of Turkish fishmeal and fish oil industry. *Turk. J. Fish. Aquat. Sc.* 15, 835–844.
- Colloca, F., Cardinale, M., Maynou, F., Giannoulaki, M., Scarcella, G., Jenko, K., et al. (2013). Rebuilding Mediterranean fisheries: a new paradigm for ecological sustainability. *Fish. Fish.* 14, 89–109. doi: 10.1111/j.1467-2979.2011.00453.x
- Cope, J. M., and Punt, A. E. (2009). Length-based reference points for data-limited situations: applications and restrictions. *Mar. Coast. Fish.* 1, 169–186. doi: 10.1577/C08-025.1
- Daskalov, G. M., Grishin, A. N., Rodionov, S., and Mihneva, V. (2007). Trophic cascades triggered by overfishing reveal possible mechanisms of ecosystem regime shifts. *Proc. Natl. Acad. Sci. U.S.A.* 104, 10518–10523. doi: 10.1073/pnas.0701100104
- European Environment Agency [EEA] (2012). *The Impacts Of Invasive Alien Species in Europe*. Technical Report (16). Luxembourg: EEA.
- Food and Agriculture Organization [FAO] (2018). *The State of Mediterranean, and Black Sea Fisheries*. Rome: FAO.
- Frid, C. L. J., Hansson, S., Ragnarsson, S. A., Rijnsdorp, A., and Steingrimsson, S. A. (1999). Changing levels of predation on benthos as a result of exploitation of fish populations. *Ambio* 28, 578–582.
- Froese, R., Coro, G., Kleisner, K., and Demirel, N. (2016). Revisiting safe biological limits in fisheries. *Fish. Fish.* 17, 193–209. doi: 10.1111/faf.12102
- Froese, R., Demirel, N., Coro, G., Kleisner, K. M., and Winker, H. (2017). Estimating fisheries reference points from catch and resilience. *Fish. Fish.* 18, 506–526. doi: 10.1111/faf.12190
- Froese, R., and Pauly, D. (2019). *FishBase. World Wide Web Electronic Publication*. Rome: FAO.
- Froese, R., Winker, H., Coro, G., Demirel, N., Tsikliras, A., Dimarchopoulou, D., et al. (2018). Status and rebuilding European Fisheries. *Mar. Policy* 93, 159–170. doi: 10.1016/j.marpol.2018.04.018
- GFCM (2016). *Working Group on the Black Sea (WGBS)*. Report of the fifth meeting. Kiev: GFCM.
- Gücü, A. C., Sakman, S., Ok, M., Dağtekin, M., Genç, Y., Ak, O., et al. (2017). On Black Sea anchovy and its fishery. *Rev. Fish. Sci. Aquac.* 25, 230–244. doi: 10.1080/23308249.2016.1276152
- Gücü, C., and Bingel, F. (2011). Hake, *Merluccius merluccius* L., in the northeastern Mediterranean Sea: a case of disappearance. *J. Appl. Ichthyol.* 27, 1001–1012. doi: 10.1111/j.1439-0426.2011.01765.x
- Guillen, J., Santos, A. C., Carpenter, G., Carvalho, N., Casey, J., Lleonart, J., et al. (2016). Sustainability now or later? Estimating the benefits of pathways to maximum sustainable yield for EU Northeast Atlantic fisheries. *Mar. Policy* 72, 40–47. doi: 10.1016/j.marpol.2016.06.015
- Holling, C. S. (1973). Resilience and stability of ecological systems. *Annu. Rev. Ecol. Syst.* 4, 1–23. doi: 10.1146/annurev.es.04.110173.000245
- Hutchings, J. A. (2000). Collapse and recovery of marine fishes. *Nature* 406, 882–885. doi: 10.1038/35022565
- Hutchings, J. A., and Reynolds, J. D. (2004). Marine fish population collapses: consequences for recovery and extinction risk. *Bioscience* 54, 297–309.
- ICES (2018). *ICES Advise Basis 2018*. Oxford: Oxford University Press.
- Knudsen, S., Zengin, M., and Koçak, M. H. (2010). Identifying drivers for fishing pressure. A multidisciplinary study of trawl and sea snail fisheries in Samsun, Black Sea coast of Turkey, Ocean. *Coast. Manage* 53, 252–269. doi: 10.1016/j.ocecoaman.2010.04.008
- Kosker, A., Özoğul, F., Durmuş, M., Uçar, Y., Ayas, D., Regenstein, J., et al. (2016). Tetrodotoxin levels in pufferfish (*Lagocephalus sceleratus*) caught in the Northeastern Mediterranean Sea. *Food. Chem.* 210, 332–337. doi: 10.1016/j.foodchem.2016.04.122
- Lago, J., Rodríguez, L. P., Blanco, L., Vieites, J. M., and Cabado, A. G. (2015). Tetrodotoxin, an extremely potent marine neurotoxin: distribution, toxicity, origin and therapeutic uses. *Mar. Drugs* 13, 6384–6406. doi: 10.3390/md13106384
- Libralato, S., Colloca, F., Gücü, A. C., Maravelias, C. D., Solidoro, C., Villasante, S., et al. (eds) (2019). *Challenges and Opportunities for the EU Common Fisheries Policy Application in the Mediterranean and Black Sea*. Lausanne: Frontiers Media, doi: 10.3389/978-2-88945-684-0
- Lleonart, J. (2015). Mediterranean fisheries. stocks, assessments and exploitation status. IEMED Mediterranean yearbook 2015. *Strateg. Sec. Econ. Territ.* 2015, 276–281.
- Lleonart, J., and Maynou, F. (2003). Fish stock assessments in the Mediterranean: state of the art. *Sci. Mar.* 67, 37–49. doi: 10.3989/scimar.2003.67s137
- McAllister, M. K., Pikitch, E. K., and Babcock, E. A. (2001). Using demographic methods to construct Bayesian priors for the intrinsic rate of increase in the Schaefer model and implications for stock rebuilding. *Can. J. Fish. Aquat. Sci.* 58, 1871–1890. doi: 10.1139/f01-114
- Merino, G., Barange, M., Blanchard, J. L., Harle, J., Holmes, R., Allen, I., et al. (2012). Can marine fisheries and aquaculture meet fish demand from a growing human population in a changing climate? *Glob. Environ. Chang.* 22, 795–806. doi: 10.1016/j.gloenvcha.2012.03.003
- Merino, G., Quetglas, A., Maynou, F., Garau, A., Arrizabalaga, H., Murua, H., et al. (2015). Improving the performance of a Mediterranean demersal fishery toward economic objectives beyond MSY. *Fish. Res.* 161, 131–144. doi: 10.1016/j.fishres.2014.06.010
- MSFD (2008). *European Parliament and Council, Directive 2008/56/EC of the European Parliament and of the Council of 17 June 2008 Establishing a Framework Community Action in the Field of Marine Environmental Policy*. Panama City, FL: Marine Strategy Framework Directive.
- Murawski, S. A. (2000). Definitions of overfishing from an ecosystem perspective. *ICES J. Mar. Sci.* 57, 649–658. doi: 10.1006/jmsc.2000.0738
- Myers, R. A. M., and Worm, B. (2003). Rapid worldwide depletion of predatory fish communities. *Nature* 423, 280–283. doi: 10.1038/nature01610
- Neubauer, P., Jensen, O. P., Hutchings, J. A., and Baum, J. K. (2013). Resilience and recovery of overexploited marine populations. *Science* 340, 347–349. doi: 10.1126/science.1230441
- Oğuz, T. (2017). Controls of multiple stressors on the Black Sea fishery. *Front. Mar. Sci.* 4:110. doi: 10.3389/fmars.2017.00110
- Osio, G. C., Orío, A., and Millar, C. P. (2015). Assessing the vulnerability of Mediterranean demersal stocks and predicting exploitation status of unassessed stocks. *Fish. Res.* 171, 110–121. doi: 10.1016/j.fishres.2015.02.005
- Pauly, D., Christensen, V., Dalsgaard, J., Froese, R., and Torres, F. Jr. (1998). Fishing down marine food webs. *Science* 279, 860–863. doi: 10.1126/science.279.5352.860
- Pauly, D., Christensen, V., Guénette, S., Pitcher, T. J., Sumaila, U. R., Walters, C. J., et al. (2002). Towards sustainability in world fisheries. *Nature* 418, 689–695. doi: 10.1038/nature01017
- Pilling, G. M., Apostolaki, P., Failler, P., Floros, C., Large, P. A., Morales-Nin, B., et al. (2008). “Assessment and management of data-poor fisheries,” in *Advances in Fisheries Science: 50 Years on From Beverton and Holt*, eds A. Payne, J. Cotten, and T. Potter (Hoboken, NJ: Blackwell Publishing), 280–305. doi: 10.1002/9781444302653.ch12
- Punt, A. E., and Suzawalski, C. (2012). How well can FMSY and BMSY be estimated using empirical measures of surplus production? *Fish. Res.* 134–136, 113–124. doi: 10.1016/j.fishres.2012.08.014
- R Core Team (2014). *R: A Language and Environment for Statistical Computing*. Vienna: R Foundation for Statistical Computing.
- Rees, W. E. (1996). Revisiting carrying capacity: area-based indicators of sustainability. *Popul. Environ.* 17, 195–215. doi: 10.1007/bf02208489
- Ricker, W. E. (1975). Computation and interpretation of biological statistics of fish populations. *Bull. Fish. Res. Board Can.* 191, 1–382.
- Salihoglu, B., Arkin, S. S., Akoğlu, E., and Fach, B. A. (2017). Evolution of future Black Sea fish stocks under changing environmental and climatic conditions. *Front. Mar. Sci.* 4:339. doi: 10.3389/fmars.2017.00339
- Schaefer, M. (1954). Some aspects of the dynamics of populations important to the management of the commercial marine fisheries. *Bull. Inter. Am. Trop. Tuna Comm.* 1, 27–56. doi: 10.1016/S0065-2881(09)56003-8

- Scientific Technical Economic Committee for Fisheries [STECF] (2017). *Assessment of Black Sea Stocks (STECF 17- (14))*. Luxembourg: Publications Office of the European Union.
- Shephard, S., Rindorf, A., Dickey-Collas, M., Hintzen, N. T., Farnsworth, K., and Reid, D. G. (2014). Assessing the state of pelagic fish communities within an ecosystem approach and the European MARINE STRATEGY FRAMEWORK Directive. *ICES J. Mar. Sci.* 71, 1572–1585. doi: 10.1093/icesjms/fsu005
- Steneck, R. S. (2012). Apex predators and trophic cascades in large marine ecosystems: learning from serendipity. *Proc. Natl. Acad. Sci. U.S.A.* 109, 7953–7954. doi: 10.1073/pnas.1205591109
- Stergiou, K. I., Somarakis, S., Triantafyllou, G., Tsiaras, K. P., Giannoulaki, M., Petihakis, G., et al. (2016). Trends in productivity and biomass yields in the Mediterranean large marine ecosystem during climate change. *Environ. Dev.* 17(Suppl. 1), 57–74. doi: 10.1016/j.envdev.2015.09.001
- Sumaila, U. R., Cheung, W., Dyck, A., Gueye, K., Huang, L., Lam, V., et al. (2012). Benefits of rebuilding global marine fisheries outweigh costs. *PLoS One* 7:e40542. doi: 10.1371/journal.pone.0040542
- Sumaila, U. R., Lam, V., Le Manach, F., Swartz, W., and Pauly, D. (2016). Global fisheries subsidies: an updated estimate. *Mar. Policy* 69, 189–193. doi: 10.1016/j.marpol.2019.104706
- Resmî Gazete, T. C. (2016). *4/1 Numaralı Ticari Amaçlı Su Ürünleri Avcılığının Düzenlenmesi Hakkında Tebliğ (Tebliğ No: 2016/35)*. Washington, DC: Mevzuat bilgi sistemi.
- Tonay, M. A. (2016). Estimates of cetacean by-catch in the turbot fishery on the Turkish Western Black Sea Coast in 2007 and 2008. *J. Mar. Biol. Assoc. U.K.* 96, 993–998. doi: 10.1017/S0025315416000060
- Tsikliras, A. C., Dinouli, A., Tsiros, V.-Z., and Tsalkou, E. (2015). The Mediterranean and Black Sea fisheries at risk from overexploitation. *PLoS One* 10:e0121188. doi: 10.1371/journal.pone.0121188
- Tsikliras, A. C., Licandro, P., Pardalou, A., McQuinn, I. H., Gröger, J. P., and Alheit, J. (2018). Synchronization of Mediterranean pelagic fish populations with the North Atlantic climate variability. *Deep Sea Res. Part II Top. Stud. Oceanogr.* 159, 143–151. doi: 10.1016/j.dsr2.2018.07.005
- Turkish Statistical Institute [TUIK] (2018). *Fishery Statistics 2017*. Ankara. Available at: <http://www.tuik.gov.tr> (accessed September 14, 2018).
- Ulman, A., Bekisoglu, S., Zengin, M., Knudsen, S., Unal, V., Mathews, C., et al. (2013). From bonito to anchovy, a reconstruction of Turkey's marine fish catches (1950–2010). *Med. Mar. Sci.* 14, 309–342.
- Ulman, A., and Pauly, D. (2016). Making history count: the shifting baselines of the Turkish fisheries. *Fish. Res.* 183, 74–79. doi: 10.1016/j.fishres.2016.05.013
- Ulman, A., Unal, V., and Bekisoglu, S. (2016a). “Turkey (Mediterranean),” in *Global Atlas of Marine Fisheries: A Critical Appraisal of Catches and Ecosystem Impacts*, eds D. Pauly, and D. Zeller (Washington, DC: Island Press), 418.
- Ulman, A., Unal, V., and Mathews, C. (2016b). “Turkey (Marmara Sea),” in *Global Atlas of Marine Fisheries: A Critical Appraisal of Catches and Ecosystem Impacts*, eds D. Pauly, and D. Zeller (Washington, DC: Island Press), 417.
- Ulman, A., Zengin, M., and Knudsen, H. (2016c). “Turkey (Black Sea),” in *Global Atlas of Marine Fisheries: A Critical Appraisal of Catches and Ecosystem Impacts*, eds D. Pauly, and D. Zeller (Washington, DC: Island Press), 416.
- Ünal, V., and Gönçüoğlu, H. (2012). “Fisheries Management in Turkey,” in *The State of the Turkish Fisheries*, eds A. Tokaç, A. C. Gücü, and B. Öztürk (İstanbul: Turkish Marine Research Foundation).
- Wang, S.-P., Maunder, M. N., and Aires-da-Silva, A. (2014). Selectivity's distortion of the production function and its influence on management advice from surplus production models. *Fish. Res.* 158, 181–193. doi: 10.1016/j.fishres.2014.01.017
- Winker, H., Carvalho, F., and Kapur, M. (2018). JABBA: just another bayesian biomass assessment. *Fish. Res.* 204, 275–288. doi: 10.1016/j.fishres.2018.03.010
- Ye, Y., Cochrane, K., Bianchi, G., Willmann, R., Majkowski, J., Tandstad, M., et al. (2012). Rebuilding global fisheries: the World summit Goal, costs and benefits. *Fish. Res.* 14, 174–185. doi: 10.1111/j.1467-2979.2012.00460.x
- Zengin, M., Gümüş, A., Süer, S., Van, A., Özcan Akpınar, İ., and Dağtekin, M. (2014). “Discard trends of bottom trawl fishery along the Samsun Shelf Area of the Turkish Black Sea coast,” in *Proceedings of the Abstracts Books of ICES Symposium - Effects of Fishing on Benthic Fauna, Habitat and Ecosystem Function*, Tromsø.

Conflict of Interest: The authors declare that the research was conducted in the absence of any commercial or financial relationships that could be construed as a potential conflict of interest.

Copyright © 2020 Demirel, Zengin and Ulman. This is an open-access article distributed under the terms of the Creative Commons Attribution License (CC BY). The use, distribution or reproduction in other forums is permitted, provided the original author(s) and the copyright owner(s) are credited and that the original publication in this journal is cited, in accordance with accepted academic practice. No use, distribution or reproduction is permitted which does not comply with these terms.