



# Assessing the Capabilities of Additive Manufacturing Technologies for Coral Studies, Education, and Monitoring

Luis Gutierrez-Heredia<sup>1</sup>, Colin Keogh<sup>2</sup> and Emmanuel G. Reynaud<sup>1\*</sup>

<sup>1</sup> School of Biomolecular & Biomedical Science, UCD Science Centre, Dublin, Ireland, <sup>2</sup> School of Mechanical and Materials Engineering, UCD Engineering and Materials Science Centre, Dublin, Ireland

## OPEN ACCESS

### Edited by:

Jaap Kaandorp,  
University of Amsterdam, Netherlands

### Reviewed by:

Juan Pablo Carricart-Ganivet,  
Universidad Nacional Autónoma de  
Mexico, Mexico  
Aldo Cróquer,  
Simón Bolívar University, Venezuela

### \*Correspondence:

Emmanuel G. Reynaud  
emmanuel.reynaud@ucd.ie

### Specialty section:

This article was submitted to  
Coral Reef Research,  
a section of the journal  
Frontiers in Marine Science

**Received:** 07 March 2018

**Accepted:** 20 July 2018

**Published:** 21 August 2018

### Citation:

Gutierrez-Heredia L, Keogh C and  
Reynaud EG (2018) Assessing the  
Capabilities of Additive Manufacturing  
Technologies for Coral Studies,  
Education, and Monitoring.  
Front. Mar. Sci. 5:278.  
doi: 10.3389/fmars.2018.00278

Additive manufacturing, better known as 3D printing is becoming an easily accessible method to produce 3D objects ranging from medical devices to jet plane parts. However, this implies the creation of an accurate 3D digital model by Computer Assisted Design (CAD) or direct acquisition of a 3D model as well as a correct understanding of the various 3D printing technologies available with their pros and cons. Here, we present a method for editing and printing of 3D models of coral colonies for the generation of accurate and enhanced 3D models suitable for research and education. This is a follow-up from other papers where 3D scanning was performed on fresh coral samples from field trips and coral skeletons from museum collections using different imaging techniques (multi-image photogrammetry and Micro CT scanning). 3D scans of colonies and samples of *Turbinaria* sp., *Leptoseris incrustans*, *Oulophyllia crispa*, *Echinopora* sp., *Siderastrea savignyana*, and *Platygyra daedalea* were used to produce multi-material and multi-scale 3D prints. Moreover, we studied the best practices for the 3D printing processes, and potential technologies most suitable for specific attributes in this practice. Additionally, we show the innovative application of 3D printed inert reactive corals able to indicate environmental changes, along with insights into the potential uses for the proposed method and related systems in biological fields and sharing with an online community.

**Keywords:** 3D modelling, 3D printing, corals, scleractinia, photogrammetry, additive manufacturing, education

## INTRODUCTION

Since their introduction in the 1980s 3D Printing (3DP) systems have rapidly become highly effective tools for a broad range of applications in a wide number of fields. The technology was firstly developed in the Nagoya Municipal Industrial Research Institute by Hideo Kodama who proposed an account of a rapid prototyping systems utilising photopolymer curing processes (Kodama, 1981). The technology has matured since and has seen a huge growth in popularity, complexity, speed, variety of materials employed and potential areas of application (Fredieu et al., 2015). The term “3D Printing” is used to describe many rapid prototyping systems, all of which operate under the basic principle of the controlled consecutive layering of a material to generate complex 3D structures.

There are many methods which fall under the classification of 3DP, with the main differentiating factor being the process in which the individual layers are formed to produce a completed

part, model, or object. Some of the most versatile and widely used 3DP technologies are Fused Deposition Modelling (FDM), Stereolithography (SLA), Laminated Object Manufacture (LOM), and Binder Jet. The use of such 3DP systems has found numerous applications in a wide range of fields, from purely scientific pursuits in the medical, engineering, design and biology fields through to more artistic endeavours in the fashion and artistic sectors.

The most frequently adopted and popularised uses of these 3DP techniques have been in medical science, particularly for the prototyping and implantation of replacement parts for the human body (Gerstle et al., 2014) and for pre-operative planning of surgeries, using collected CT and MRI scan data to reconstruct 3D models of complex internal structures (McGurk et al., 1997; Rengier et al., 2012; Klein et al., 2013). Use in other biological-based fields has included the replication of physical representations of molecules in biomolecular sciences (Jones, 2012) and the documentation and restoration of artefacts in the paleontological and archaeological fields (Kuzminsky and Gardiner, 2012). These applications have been focused on education and training for both the general public and specialised users (surgeons, archaeologists, etc.) and have helped improve the overall value of education (Eisenberg and Buechley, 2008; Eisenberg, 2013; Fredieu et al., 2015), science visualization (Partridge et al., 2012; Segerman, 2012) and science outreach to the public in museum and exhibition contexts (Allard et al., 2005; Tomaka et al., 2009; Wachowiak and Karas, 2009; Chapman et al., 2010). 3DP has recently been used in coral studies as physical models in hydrodynamic simulations in flow chambers (Chindapol et al., 2013) and to produce customised cement and sandstone blocks in artificial coral reef restoration (Kramer et al., 2016).

It has been demonstrated that, by using diverse imaging methods, 3D models can be produced in both field and laboratory conditions for diverse morphologies of coral colonies and corallites at multi-scale levels from both fresh samples and skeleton collections (Gutierrez-Heredia et al., 2015, 2016). Some widely available 3D digitising methods are laser triangulation, multi-image photogrammetry, CT scanning, and structured-light scanning. 3D models produced by these methods are suitable for the accurate calculation of biological parameters and can digitise different physical properties such as multi-image photogrammetry to capture superficial texture mapping and colouring, and CT scanning to represent internal structures. These digital collections are ideal for CAD modification to 3D printing tests as each 3D model can be adapted to fit the particular printing technology that can best represent different biological characteristics (form, texture, and colour) and distinct material properties (density, endurance, and reactivity) for handling in education and training, and as customised tools for research.

## MATERIALS AND METHODS

### Imaging and Modelling

A 3D model of *Turbinaria* sp. was digitized using multi-image photogrammetry according to Gutierrez-Heredia et al.

(2015), (Figure 1), and 3D models of samples and corallites of *Oulophyllia crispa*, *Leptoseris incrustans*, and *Platygyra daedalea* were similarly digitized using this technique as mentioned in Gutierrez-Heredia et al. (2016), (Figure 2). *Siderastrea savignyana* and *Echinopora* sp. corallites were imaged from small pieces extracted from bleached coral skeleton samples cut into small sections to fit inside the Micro CT scanner. *S. savignyana* was cut into a rectangular prism (21 × 6 × 5 mm) and *Echinopora* sp. was cut into a rectangular prism (13 × 5 × 4 mm). These samples were secured in Polyurethane foam and scanned with a CT120 (Trifoil Imaging) Micro-CT scanner. The micro-CT image acquisition consisted of 1,200 projections taken at 0.3° increments in one full rotation of the gantry in ~40 min with an exposure of 100 ms and bin mode 1 × 1. The X-ray tube voltage current was 80 kV and 32 μA, respectively. The resulting raw data were reconstructed using customised proprietary software to create a final image with 25 μm voxel dimensions. MicroView (ABA 2.4 General Electric) software was used to crop and 90° rotate images to isolate the area of interest and the images were converted to DICOM format. The DICOM files were transferred to a desktop computer iMac Quad-Core 2.7 GHz Intel Core i5 with 8 GB RAM with OS X Lion 10.7.3, and processed with the free open-source version of the imaging software OsiriX (Pixmeo) v. 5.9 (32-bit). These were surface-rendered in the highest resolution values possible for closest fit to threshold between specimen density without generating artifacts from the holding foam for isosurface generation to export the resulting 3D models as stereolithography (.stl) format files. These models were then imported into freeware Meshmixer (64-bit, v2.4) to remove odd artefacts and background noise and for the segmentation of one corallite of interest.

### Specimen Replication

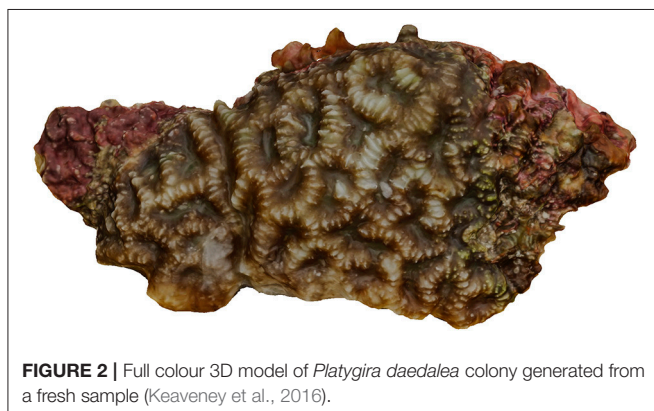
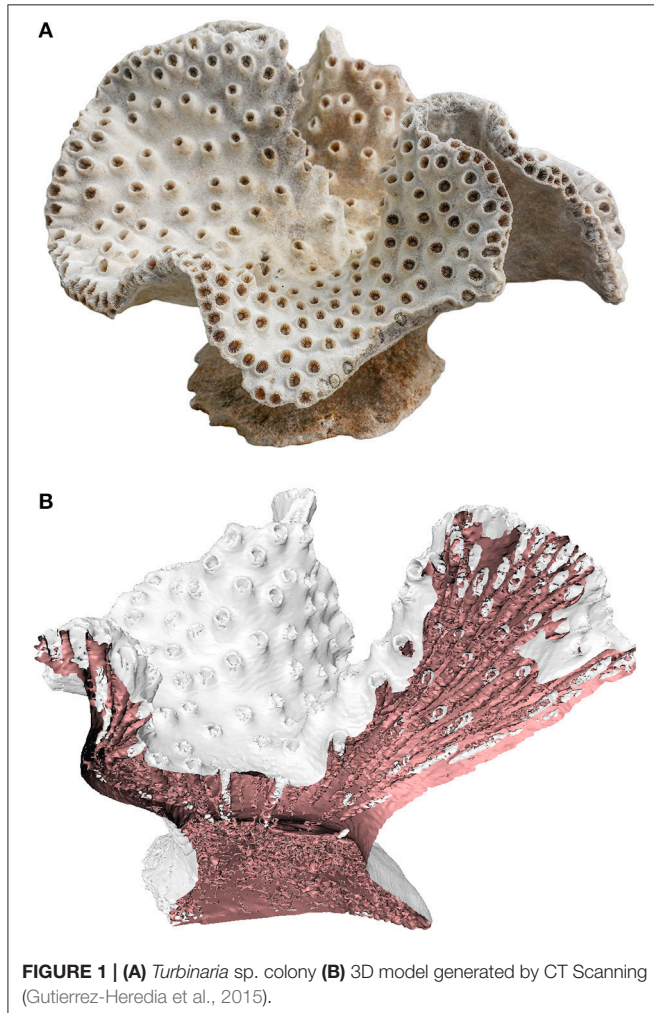
The resulting digital specimens were utilised for 3D printing applications to allow for their physical replication. These stereolithography files, both from photogrammetry and Micro-CT Scanning, were imported into Cura 3D slicing software (version 13.04) to generate the individual printing slices, paths, or patterns. Models were scaled and orientated accordingly and then printed using a variety of 3DP methods. Fused Deposition Modelling (FDM), Stereolithography (SLA), Laminated Object Manufacture (LOM), and Binder Jet printing methods were used, with details discussed below.

### Fused Deposition Modelling (FDM)

A range of Ultimaker FDM 3DPs (Ultimaker Original 2 & 3), were employed to produce prints of the coral models. Three millimeters of Ultimaker & Ink3D Polylactic acid (PLA) & Acrylonitrile butadiene styrene (ABS) polymer filaments were used in colours silver, white, and clear blue, to reproduce the generated model. Models were scaled and orientated in an upright position and then printed using base parameters with a fill density of 5–15%, external support material only and printed on a raft for stability. These slices were then compiled and exported as a G-code file to be printed on the printers listed above.

## Stereolithography (SLA)

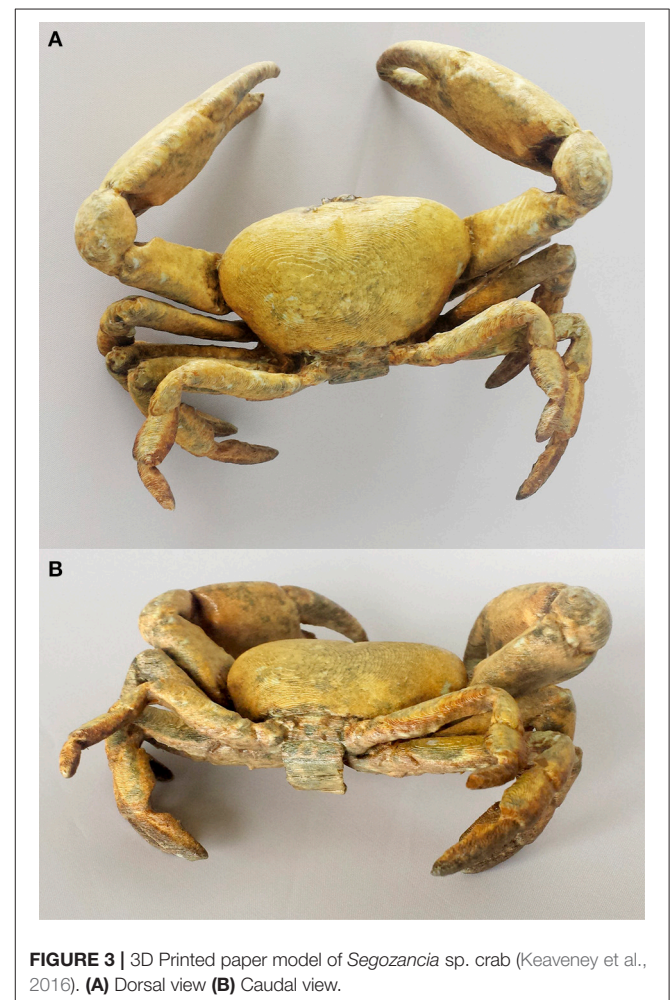
A Form1+ SLA printer (Formlabs) was used to produce prints of the generated models. A clear UV cure resin (Formlabs) was used, giving a semi opaque reproduction of the model. A 3D model of *Turbinaria* sp. was printed in translucent resin using a Formlabs Form 1+ printer, which uses the SLA method



of 3DP. The matching Formlabs slicing software, *Preform*, was used with a model layer thickness of 25 microns. The resin used with the Form 1 is a photoreactive resin classed as a mixture of methacrylic acid esters and photo initiator. Its formulation is proprietary, but it contains methacrylated oligomers, methacrylated monomers, and an unknown photo initiator. It cures at 405 nm wavelength and the Form1 uses a laser light source directed by a galvanometer to cure the desired pattern per layer. Formlabs software (*Preform*) was used to orientate, hollow, and support the part for printing.

## Laminated Object Manufacture (LOM)

An M-COR Iris (produced by M-Cor Technologies) was used to produce a LOM print of one of the generated models (**Figure 3**). Standard 100-micron printing paper was used, along with standard office printing ink to give a full colour reproduction of the model. LOM processes present significant opportunities in the biological sciences due to their ability to produce full-colour prints in a safe eco-friendly manner through the use of paper, inks and water based glues.





## Binder Jet

A 3D model of an *O. crista* corallite model was printed in a sandstone colour printer by Shapeways on a Z Printer 3D inkjet printer using VisiJet PXL Core/zp151 material. This process utilises inkjet printing heads to apply a liquid bonding agent to powder material and uses the same layering process to produce the completed part. This process allows the cheap full-colour replication of digital specimens in a range of materials, but due to the powder binding process the parts can have some material mechanical limits.

## RESULTS

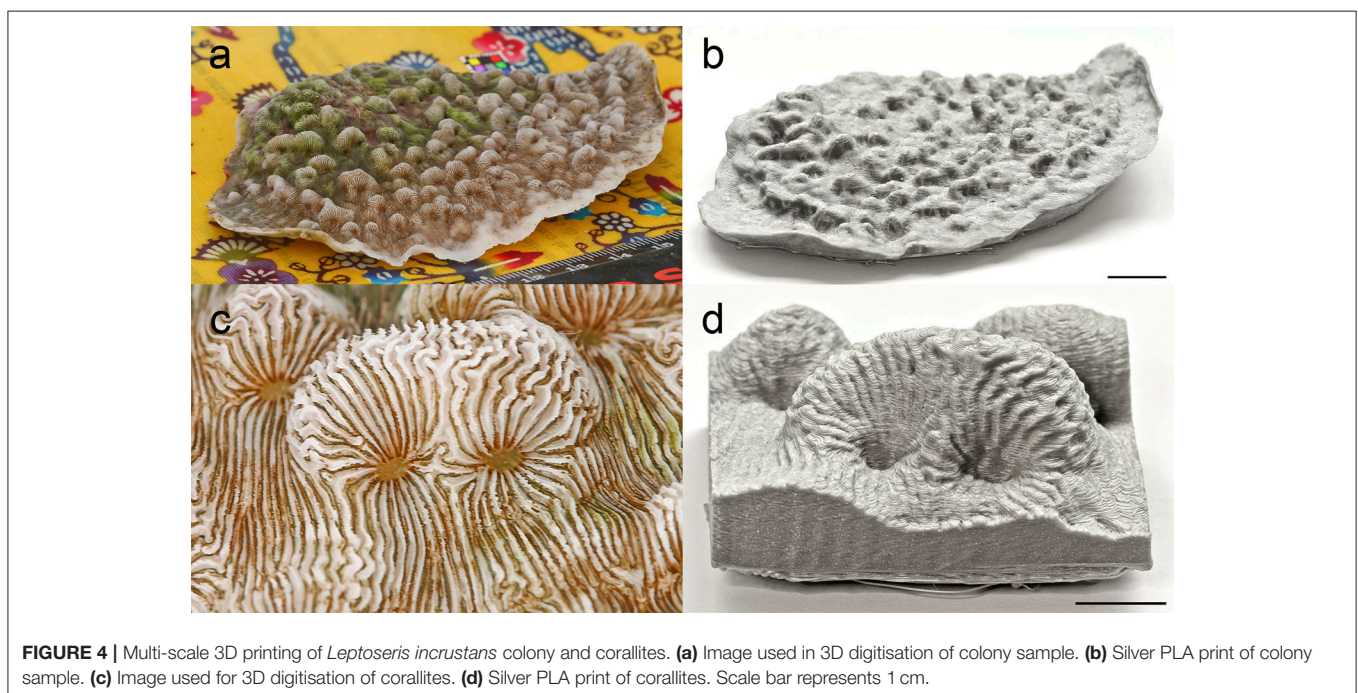
Several 3D prints were produced from multi-scale models from coral colonies and corallites in multi-material prints. Varied materials had distinct strengths and weaknesses in physical attributes and detail. When 3D printing fails to produce details at a certain scale, increasing the resolution of the 3D model produces an increment in detail of the desired characteristics. In **Figure 4b**, the 3D print of *L. incrustans* colony sample shows the morphology of the colony and a number of corallites can be observed individually, while characteristics of corallite septa, costae, and mouths can be observed in the amplification of individual corallites (**Figure 4d**).

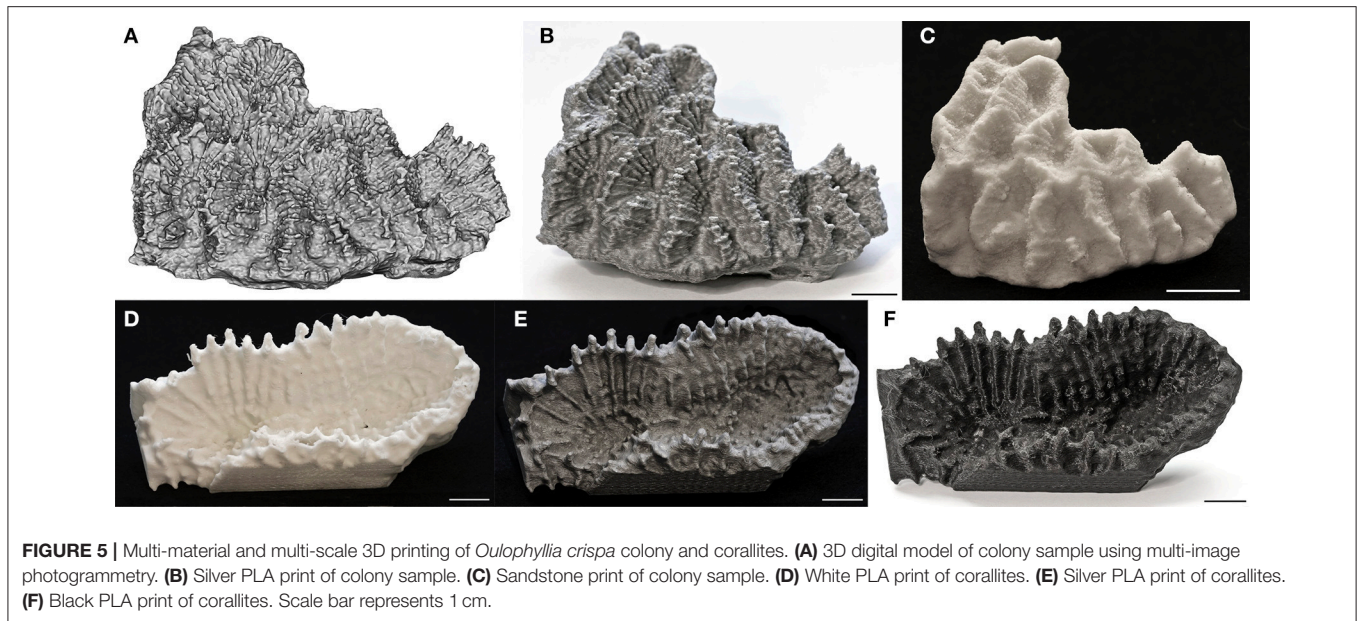
As can be observed in **Figure 5**, the quality of the 3D prints from the 3D model is reduced if this is digitised in very high resolution. Different materials can produce varying degrees of detail in each scale, with varying structural strength and texture of the 3D model. Even different colours of the same material can produce striking differences in detail, due to the influence of light, shadow and colour on the parts. **Figure 5** shows the impact of colour and material on the

quality and detail of printed objects. **Figure 5A** shows the digitised 3d model, with **Figures 5B–F** showing a variety of materials and colours giving varying levels of detail and resolution. Silver PLA consistently produced better definition than the other materials, both for colony and corallite scales.

The *Turbinaria* sp. model was similarly printed below using FDM, BJ, and SLA printers, in a range of colours (**Figure 6**). The silver PLA printed specimen (**Figure 6E**) shows the best feature definition, due to its grey colour, allowing the corallites to be clearly seen. The alternative colours, Blue (**Figure 6C**), White (**Figure 6D**) & Black (**Figure 6F**), are great additions for improved engagement & education activities, allowing custom colours and materials to enhance the experience. The SLA process allows the production of clear models (**Figure 6G**) for specialised marine education and the production of a new generation of education tools (such as visualisation of corallite growth inside the colony as imaged by CT scanning).

The segregation and separation of individual biological features or structures allows for high quality replication of fine details. Corallites can be separated and printed on a large scale in a variety of colours to show individual structures and layouts to enhance feature identification. Such small features would not be visible on a full coral print, so the replication of these individual sections allows more information to be imparted to the user. Replication of these corallites can be seen in **Figure 7**. Detail is high enough to observe the geometry of the corallite wall, number, arrangement and configuration of septa, and texture of the coenosarc, essential for taxonomic identification and other biological studies of scleractinia. Details and the definition of the prints were constantly greater when using Silver PLA on both corallite models.





The painting of objects with commercial paints, resins, or varnishes, to produce composite effects can further enhance the display of 3D models. In **Figure 8**, detailed texturing and shading can be observed in 3D prints resulting in added contrast in the septa, and mouths of each corallite. Furthermore, the use of UV-reacting varnish depicts the autofluorescence quality of the *Symbiodinium* sp. symbionts that are present in this species. These additions enhance the educational aspects of these models, allowing the mimicking of natural effects such as autofluorescence.

Larger-scale prints can be produced using the paper-based LOM processes, which produce objects using colour printed and layered paper. This process produces large-scale specimens of coral structures with significant weight and density. The full colour printing aspect allows the printing of coral structures in various stages of life, from living coral through corals recently removed from the oceans to fully bleached coral skeletons. This adds a new dimension to the education and engagement process, without the need for the creation of expensive and time-consuming artist-created models. An example of a 3D paper printed living coral specimen can be seen in **Figure 9**, produced for Keaveney et al. (2016).

### Built-In Functionality

As a digital specimen is produced, a new range of options becomes available for the further educational enhancement of these models. 3D design software was used to produce 3D prints with composite elements, accentuation of anatomic features, in-built functionality and the production of prints from scratch. In **Figure 10a**, the corallites of a 3D model of a *Turbinaria* sp. colony were accentuated and detached from the main model, so composite polymers could be printed. The PLA polymer was the base of the coral skeleton, and an UV-reactive PLA polymer was used for the corallite elements. **Figure 10b** shows the completed coral model, with **Figure 10c** showing the corallites

reacting when exposed to UV light (direct exposure to sunlight), producing a colour change from light grey to dark purple.

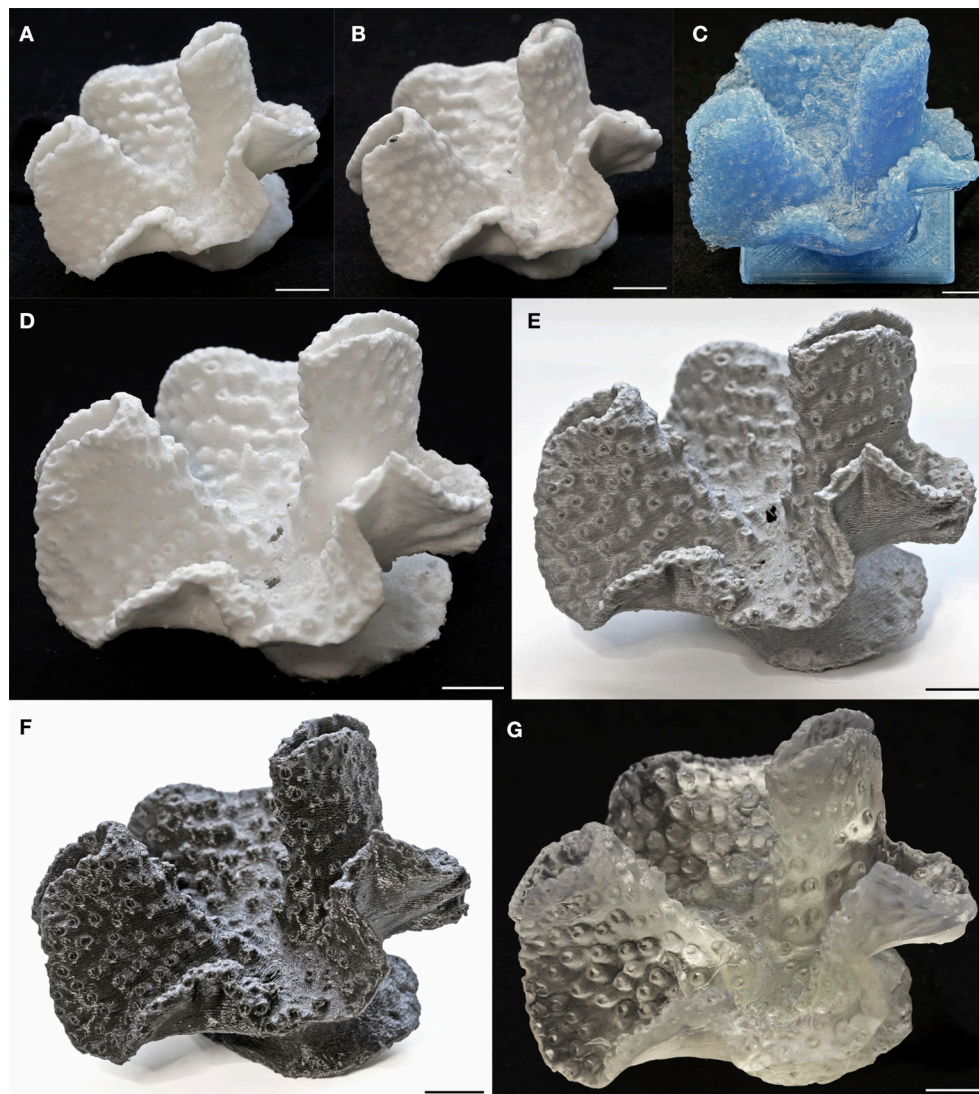
For educational purposes an idealised model of a corallite and polyp were generated using 3D design software (Sketchup, 2016<sup>1</sup>), the assembled parts being produced using different materials (**Figure 10d**). The polyps demonstrated high detail in morphology, tentacle number and gastric cavity and could be detached from the corallite base to demonstrate the septum number and arrangement, and the central columella. This ability to add or highlight selected elements and build in functionality allows improved education and outreach outcomes, via low cost production methods.

Customised and designed functionality is an added potential benefit from producing these objects with 3DP. New polymer materials are coming on the market which allow enhanced functionality, such as temperature-affected colour changes, (thermochromic filaments) and UV light-affected colour changes, (photochromic filaments). **Figures 11a,b** show a photochromic coral colony printed with a photochromic filament, transitioning from a white colour to a purple colour in the presence of UV light, similarly **Figures 11c,d** show 3D fish skeleton models printed with assorted thermochromic filaments, changing colour when subjected to a temperature change.

Similarly, when a digital specimen is generated, the contrast and colouring of the specimen can be altered before printing to allow the highlighting or marking of specific features on the specimen to aid in identification, education, and research activities. This allows the user to tailor the visual characteristics of the printed part to aid in the education process, as seen in **Figure 12**, in which the texture map is changed to modify the visual characteristics.

<sup>1</sup><https://www.sketchup.com/>





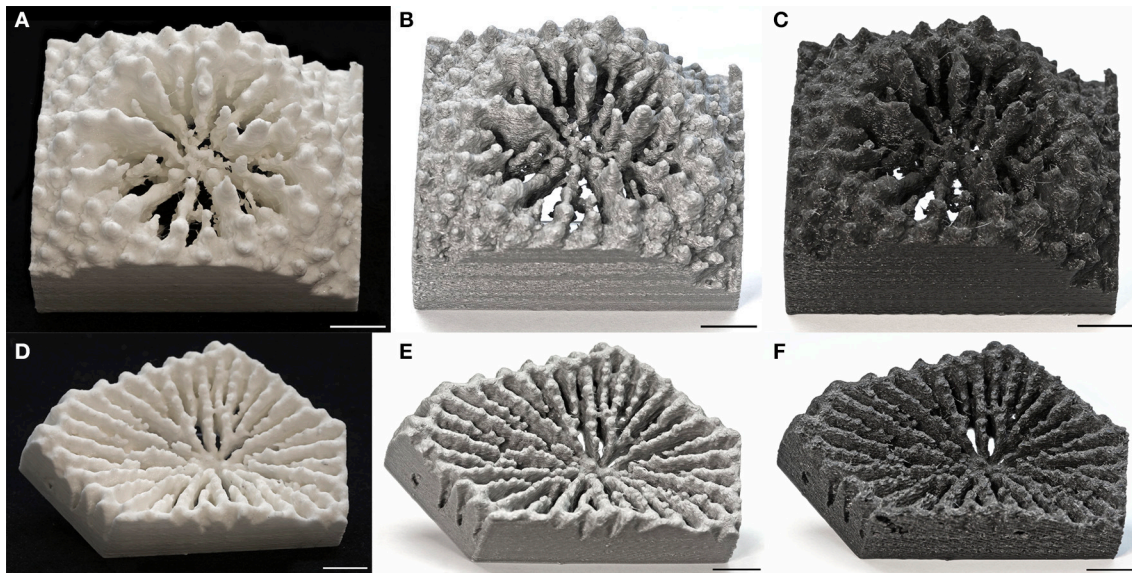
**FIGURE 6** | Multi-material 3D printing of *Turbinaria* sp. colony. **(A)** White ABS print of colony. **(B)** Sandstone print of colony. **(C)** Blue PLA print of colony. **(D)** White PLA print of corallites. **(E)** Silver PLA print of colony. **(F)** Black PLA print of colony. **(G)** Translucent resin print of colony. Scale bar represents 1 cm.

In addition to the objects themselves, new tools for coral research and data collection can be produced, allowing the creation of customised data collection systems. These systems can be produced at low cost, in remote locations and in short timeframes, allowing the infield repair or modification of parts and systems. An example of a 3D printed UV torch and camera stabiliser unit in use in the field can be seen in **Figure 13**.

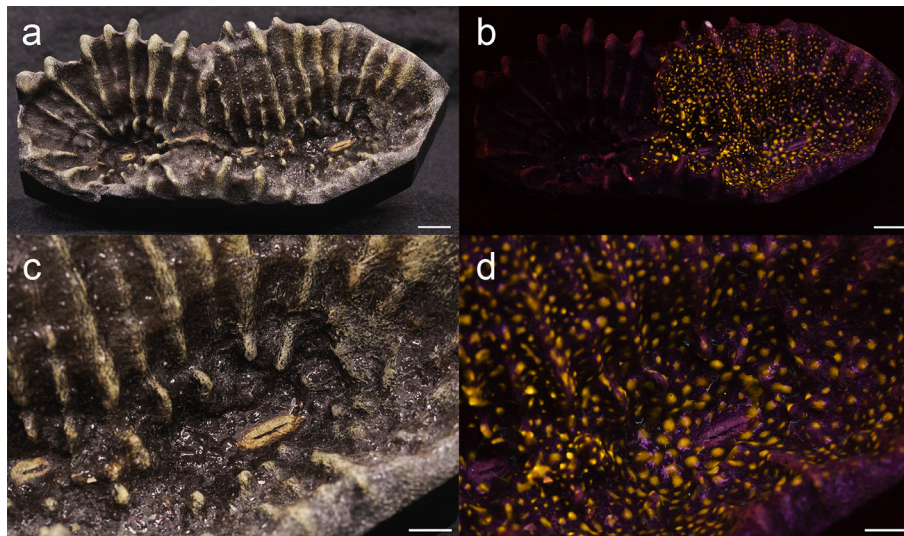
## DISCUSSION

Stereolithography (SLA) and Fused Deposition Modelling (FDM) were constantly used due to their individual advantages and suitability for the context in question. SLA processes are well suited to these applications due to their fine feature resolution, high quality details, surface finish, and favourable

optical properties. This method also allows the production of extremely complex geometries, due to the added support from resin and the bottom-up layering process, which is very beneficial for the production of such complex biological specimens. SLA processes require strict control of the level, environment and properties of the print area, along with specific handling & costs issues associated with the resins required. These requirements make SLA a relatively complex and delicate process, requiring higher levels of control and resulting in higher costs. The FDM process is much simpler, producing low-cost, robust objects with fewer environmental constraints when compared to SLA. The simpler nature and lack of specific environmental conditions results in it being generally much cheaper and easier to use, with significantly lower barriers to entry and utilisation. These FDM processes can exploit a wide range of polymer materials,



**FIGURE 7 |** Multi-material 3D printing of *Echinopora* sp. and *Siderastrea savignyana* skeletal corallites from MicroCT scanning imaging. **(A)** White PLA print of *Echinopora* sp. corallite. **(B)** Silver PLA print of *Echinopora* sp. corallite. **(C)** Black PLA print of *Echinopora* sp. corallite. **(D)** White PLA print of *S. savignyana* corallite **(E)** Silver PLA print of *S. savignyana* corallite. **(F)** Black PLA print of *S. savignyana* corallite. Scale bar represents 1 cm.

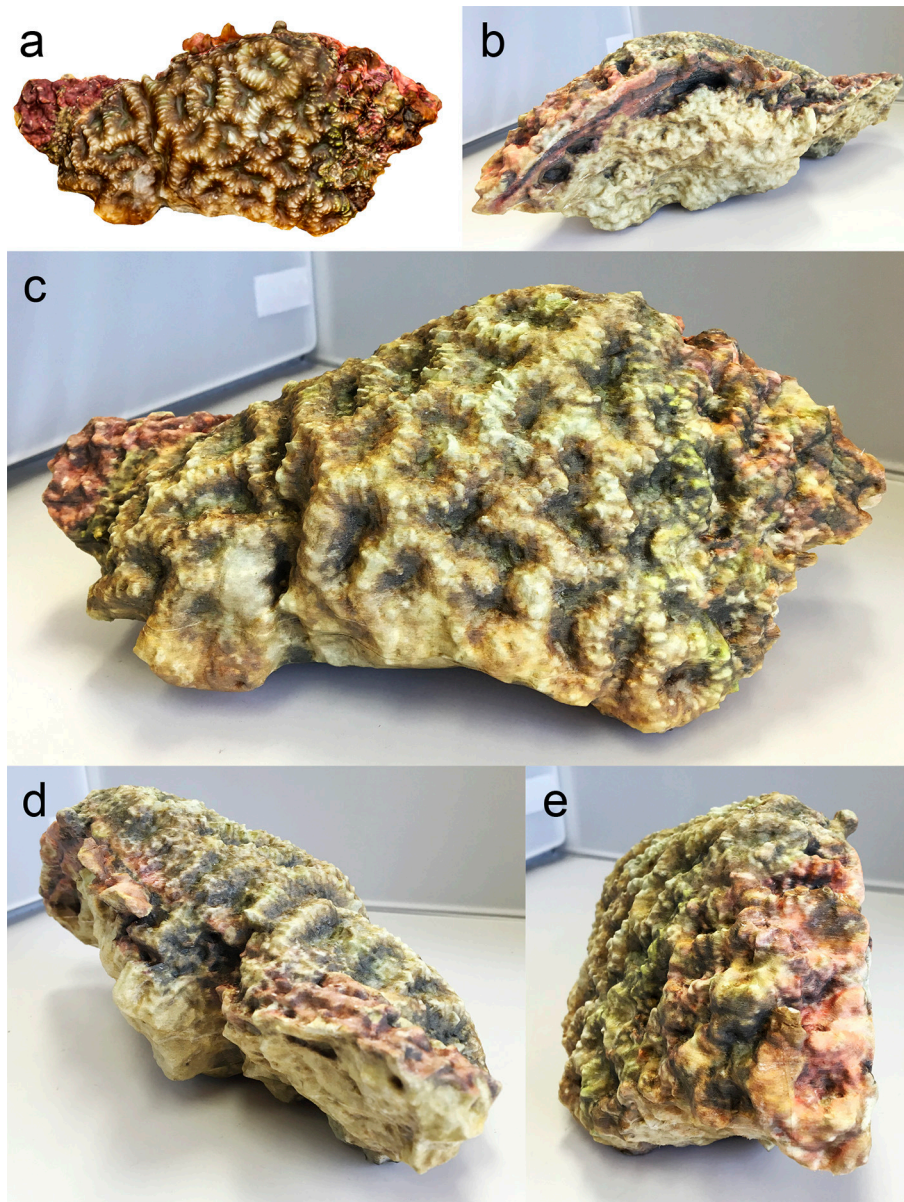


**FIGURE 8 |** Multi-spectral print of *Oulophyllia crispa* corallites. **(a)** Sandstone print of corallites texturised with model paint and UV reactive varnish under normal lighting. **(b)** Sandstone print of corallites texturised with model paint and UV reactive varnish under UV lighting. Scale bars represent 1 cm. **(c)** Close-up of sandstone print of corallites texturised with model paint and UV reactive varnish under normal lighting. **(d)** Close-up of sandstone print of corallites texturised with model paint and UV reactive varnish under UV lighting. Scale bars represent 5 mm.

with almost any thermoplastic and composite materials being of particular interest. These composite materials are usually a mix of thermo-plastic as either a binder, with fibre additions like carbon fibre, or as a carrier, such as those utilising metal powders which can be fused using an oven-based sintering process. The ability to add specific elements to the polymer materials unlocks the potential to tailor specific material performance characteristics on bulk material terms or even to specific parts, components

or regions in a print. While these benefits make FDM cheaper, quicker and more accessible than SLA systems, in general FDM processes produce parts with much lower resolutions and much rougher surface finishes than aforementioned SLA systems. The LOM method shows promise for specimen replication for public display, interaction, and engagement activities in the biological sciences leading to increased awareness and public/expert knowledge due to the incredible accuracy of the





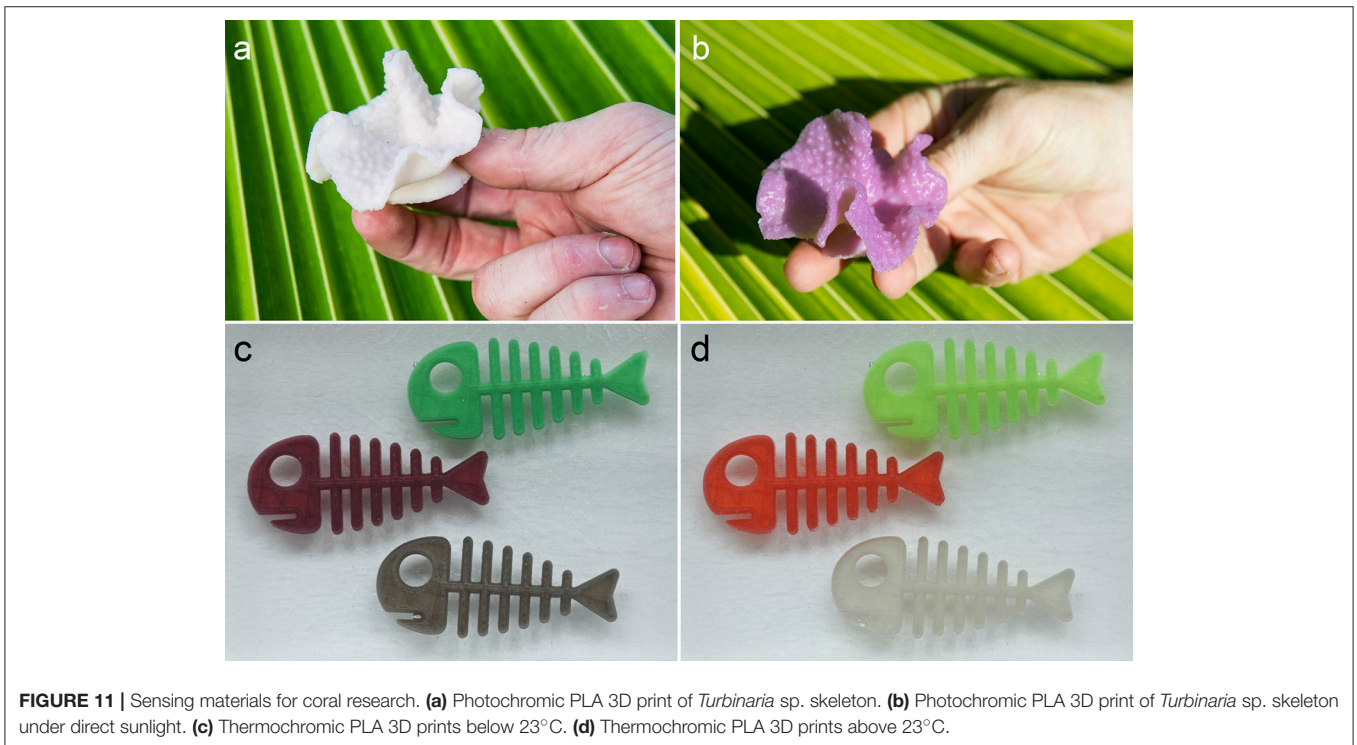
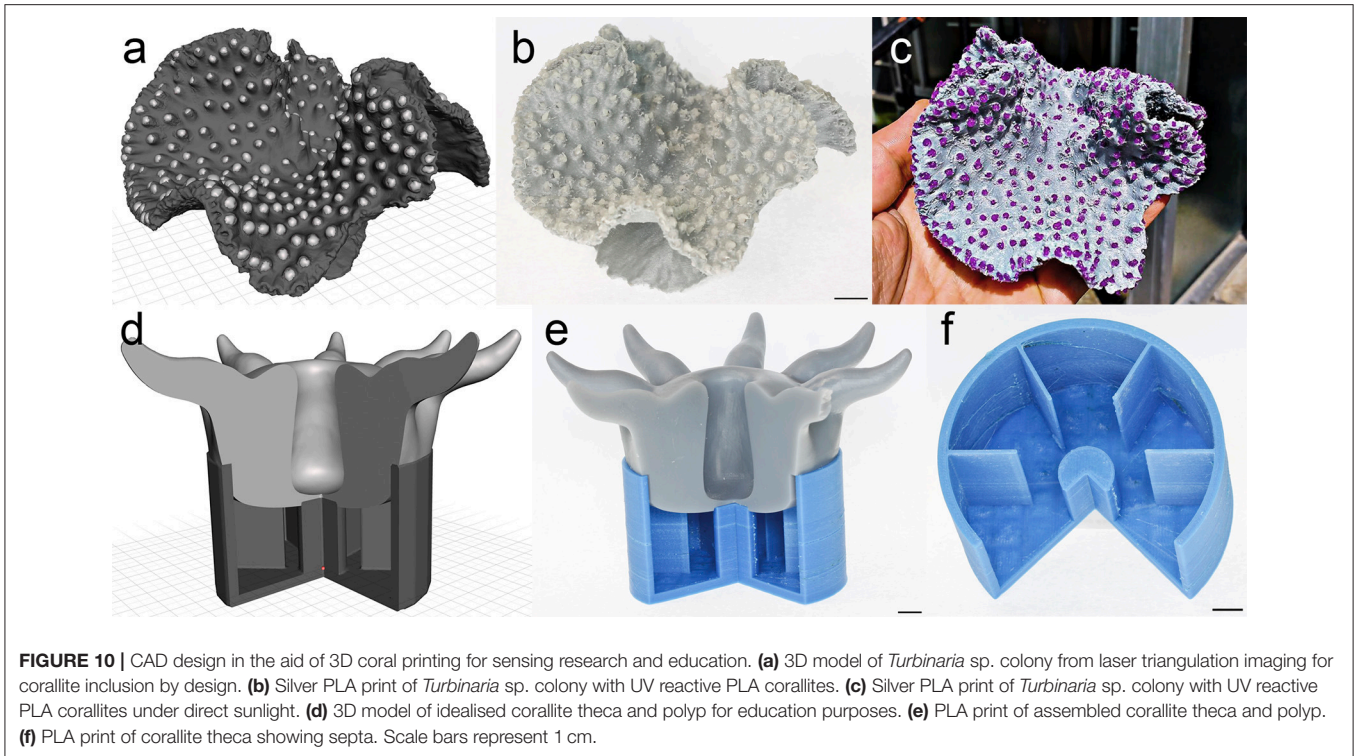
**FIGURE 9** | Paper 3D printer *Platygyra daedalea* colony sample with living tissue texture map (Keaveney et al., 2016). **(a)** Digital 3D model of *P. daedalea* **(b)** Back view of paper model **(c)** Front view of paper model **(d)** Right view of paper model **(e)** Left view of paper model.

texture recreation from the digital specimen. Finally, the Binder Jet process may have mechanical performance limits due to the hands-on nature of the proposed interactions with the objects.

All of these 3DP methods are widely available, accessible, low cost methods of 3D printing, which allow the adoption of the proposed replication process in number of cost-sensitive fields. This uncomplicated production of printed parts for use in the classroom or other educational environments allows increased personal engagement with the specimens without any risk to the original samples. These highlighted applications of the proposed concepts & methodologies show the scope

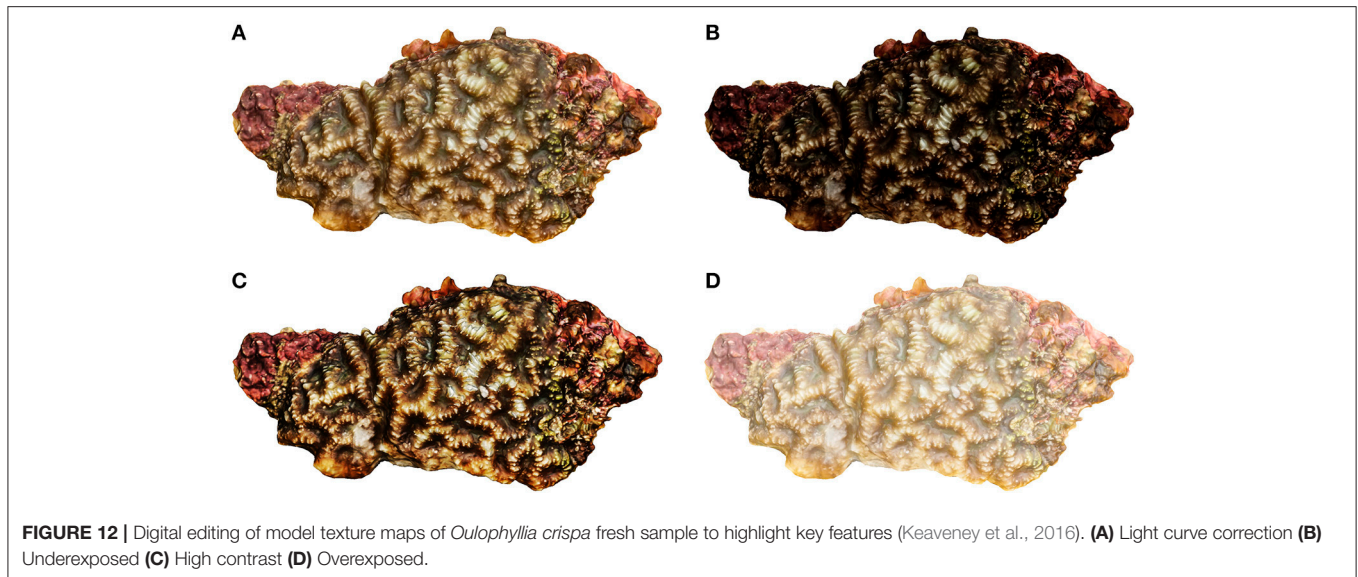
and potential presented in this field. The use of 3D printing technologies has directly impacted the coral and marine fields in several ways, including the production of cement and sandstone blocks for artificial coral reef restoration (Kramer et al., 2016). It has been noted that scleractinian planulas are naturally drawn to surfaces with pastel colours (particularly white and pink) with a similar texture to coral as potential locations for settling. The planulas also seem inclined to settle on complex 3D structures with numerous interstices and high rugosity to escape from predators or to avoid being crushed. 3DP technologies are optimal for producing artificial habitats that mimic these characteristics. The neutral pH of sandstone





and ceramics could potentially increase the recruitment rates of planulas and other reef organisms (<https://www.popsci.com/3d-printing-could-save-coral-reefs>, last accessed date: 18 January 2018). There is already a company specialising in

the customisation and production of 3DP reef blocks (<http://www.reefdesignlab.com>). The replication of reproduced coral structures, could also be utilised for the physical assessment of the factors impacting coral development, growth and destruction.



These 3D prints could be used as replicas of real coral specimens in hydrodynamic simulations in flow chambers (Chindapol et al., 2013), allowing a greater understanding of the physical characteristics affecting coral degradation in the natural environment.

Education in taxonomic features and species identification can be greatly enhanced through the use of the proposed 3DP process. High resolution 3D printed specimen models with enhanced embodied taxonomic features can be used to highlight and aid in the identification of these features for educational purposes. Multi-scale printing of specific features, portions or appendages in these coral specimens, will allow greater understand of how different characteristics are related at distinct organisation levels, as seen previously in **Figures 4, 5**. These high definition multi-scale 3D prints were produced by previously embedding higher mesh resolution corallites into colony 3D meshes and segmenting them afterwards (**Figure 14**).

Similarly, multi-spectral (visible light, fluorescence, and infrared) specimens can also be produced, to help indicate the relationships present in coral communities at different electromagnetic spectra, and to show the relationship between their individual biological attributes, as seen in **Figures 10, 11**.

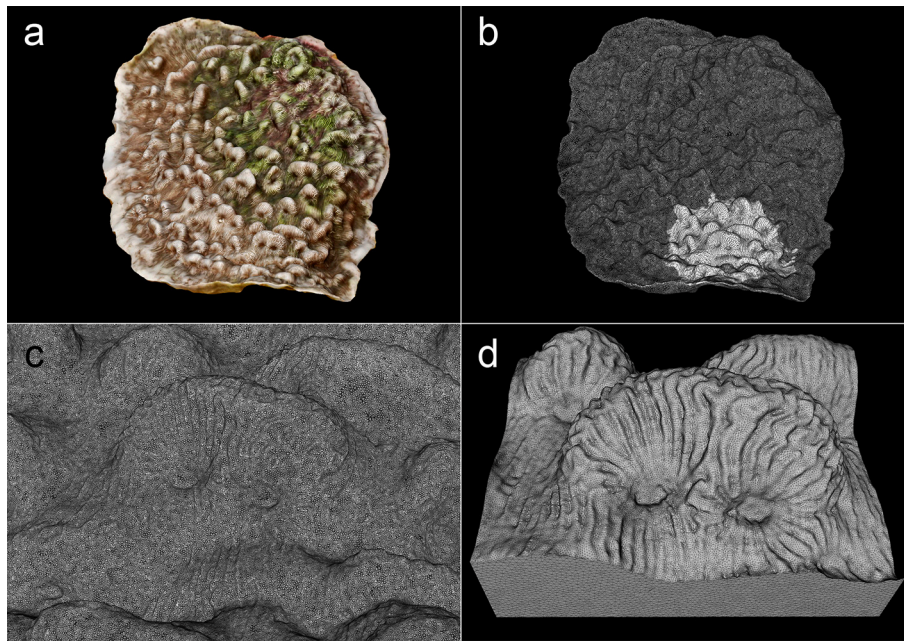
### DYI Coral Reef Research Tools

3DP processes can also be utilised for the development and production of bespoke customised laboratory, workshop, and field tools for marine research activities. The ability to produce customised tools and accessories before field work and the possibility to produce replacement parts in the field using these systems can greatly increase the speed, specificity, quality and outcomes of field research (Baden et al., 2015). The open-source file depositories available inline allow these tools, pieces of equipment and concepts to be widely disseminated and quickly accessed, enabling their rapid customization, improvement and sharing in specialised and non-specialised online communities.

### A World of Opportunities...

The rapid growth in popularity and subsequently development of the 3DP field, particularly in the consumer FDM space, has resulted in the development of a very wide spectrum of polymers compatible with low cost FDM systems. These new compatible materials include composites, such as PLA imbedded with particles such as copper, bronze, stainless steel, wood, ceramics, and carbon, all aimed at increasing the performance characterises of the end products, or other alternative biologically sourced materials made from wood, linen, lignin, or algae, to reduce the impact of oil derived polymers on the environment. These filaments offer differing degrees of texture, strength, flexibility, elasticity, and colour, including fluorescence, phosphorescence, and translucence (**Figures 10, 11**). These characteristics can be enhanced by selecting and editing a 3D model based on a specific digitising method,





**FIGURE 14 |** Multi-scale 3D meshes of *Leptoseris incrustans* colony and corallites. **(a)** 3D model of colony with texture mapping. **(b)** 3D mesh of same colony, note the embedded corallites with higher triangle count on the lower side. **(c)** Close-up of portion of mesh with higher triangle count corallites. **(d)** Cropped corallites for 3D print.

or a fusion of different imaging technologies. 3D models produced from CT scans are highly detailed and accurate, even in microscopic samples, and produce meshes that display internal structures. These models were selected when translucent resins (SLA) could display internal anatomical details of coral samples and corallites (FDM). Likewise, these models could be potentially employed when producing 3D prints with plane cuts across the specimen to demonstrate internal structures with opaque materials (Figure 1B, and similar to Figure 10e). 3D models produced from photogrammetry were selected for also being highly detailed, accurate, and greatly inexpensive compared to CT scanning, and texture mapping can be used to produce coloured 3D prints of fresh samples (Binder jet and LOM).

An interesting approach to coral reef research, and general marine biology community research, would be the use of sensory materials, or reactive plastics, as discussed previously. Recent developments have made available polymer materials for FDM 3DP systems which are colour responsive to a range of changes in physicochemical parameters in the contact environment (Figure 11). Commercial sensory products with similar qualities have been used in aquariums to assist in keeping environmental parameters optimal (temperature, pH, and UV light decals attached to the walls). Structures manufactured with these reactive polymers could be used on a larger scale in underwater environments. Thermochromic rings could be readily used to indicate abrupt changes in water temperature (e.g., El Nino climate incidents), photochrome rings could signal UV bleaching, and even halochromic rings

could reveal changes in water acidity. These accessories are potential tools to passively monitor ocean changes using boats or permanently placed in environments, tools which could be easily monitored by locals without the need for specialist training or equipment.

Prospects for these technologies rely on the use of online resources to display, collaborate, and even add aesthetic and monetary value to the 3DP objects produced. One website, Sketchfab (<https://sketchfab.com/therlab>), allows the researcher to upload 3D content to a free account, where it can be displayed for education and science outreach, shared amongst collaborators, and even animated. Similarly, Thingiverse (<https://www.thingiverse.com/>) and Shapeways (<http://www.shapeways.com/>) can potentially be a marketplace where the users of 3D digitisation and 3D printing can promote a global community of design and manufacturing, increasing awareness, opportunities, and potential for the concept. Thingiverse is a free website aimed at the sharing of user created 3D design files, and Shapeways is a 3D printing forum and service start-up company. Used in conjunction, they provide a place where researchers can upload and share 3D printable files which can be printed in a wide range of materials and colours, then shipped across the globe. This allows for a multi-user community where valid 3D prints can be interchanged, and practical solutions and customised tools for research and monitoring can be produced.

These 3DP systems and their associated networks present huge potential for the replication and activation of coral analogues for research, education, and environmental protection,

offering new methods to help protect these delicate marine communities.

## AUTHOR CONTRIBUTIONS

LG-H: study's conception, article drafting, imaging; CK: article drafting, production of 3D prints for assessment; ER: study's conception, article drafting.

## REFERENCES

- Allard, T. T., Sitchon, M. L., Sawatzky, R., and Hoppa, R. D. (2005). "Use of hand-held laser scanning and 3D printing for creation of a museum exhibit," in *Proceedings of the 6th International Symposium on Virtual Reality, Archaeology and Cultural Heritage: Short and Project Papers*, eds M. Mudge, N. Ryan, and R. Scopigno (Pisa), 97–101.
- Baden, T., Chagas, A. M., Gage, G., Marzullo, T., Prieto-Godino, L. L., and Euler, T. (2015). Open labware: 3-d printing your own lab equipment. *PLoS Biol.* 13:e1002086. doi: 10.1371/journal.pbio.1002086
- Chapman, H. P., Gaffney, V. L., and Moulden, H. L. (2010). The eton myers collection virtual museum. *Int. J. Humanit. Arts Comput.* 4, 81–93. doi: 10.3366/ijhac.2011.0009
- Chindapol, N., Kaandorp, J. A., Cronemberger, C., Mass, T., and Genin, A. (2013). Modelling growth and form of the scleractinian coral *pocillopora verrucosa* and the influence of hydrodynamics. *PLoS Comput. Biol.* 9:e1002849. doi: 10.1371/journal.pcbi.1002849
- Eisenberg, M. (2013). 3D printing for children: what to build next? *Int. J. Child. Comput. Interact.* 1, 7–13. doi: 10.1016/j.ijcci.2012.08.004
- Eisenberg, M., and Buechley, L. (2008). Pervasive fabrication: making construction ubiquitous in education. *J. Softw.* 3, 62–68. doi: 10.4304/jsw.3.4.62-68
- Fredieu, J. R., Kerbo, J., Herron, M., Klatte, R., and Cooke, M. (2015). Anatomical models: a digital revolution. *Med. Sci. Educ.* 25, 183–194. doi: 10.1007/s40670-015-0115-9
- Gerstle, T. L., Ibrahim, A. M. S., Kim, P. S., Lee, B. T., and Lin, S. J. (2014). A plastic surgery application in evolution: three-dimensional printing. *Plast. Reconstr. Surg.* 133, 446–451. doi: 10.1097/01.prs.0000436844.92623.d3
- Gutierrez-Heredia, L., Benzoni, F., Murphy, E., and Reynaud, E. G. (2016). End to end digitisation and analysis of three-dimensional coral models, from communities to corallites. *PLoS ONE* 11:e0149641. doi: 10.1371/journal.pone.0149641
- Gutierrez-Heredia, L., D'Helft, C., and Reynaud, E. G. (2015). Simple Methods for interactive 3D modeling, measurements and digital databases of coral skeletons. *Limnol. Oceanogr. Methods* 13, 178–193. doi: 10.1002/lom3.10017
- Jones, N. (2012). Science in tree dimensions: The print revolution. *Nature* 487, 22–23. doi: 10.1038/487022a
- Keaveney, S., Keogh, C., Gutierrez-Heredia, L., and Reynaud, E. G. (2016). "Applications for advanced 3D imaging, modelling, and printing techniques for the biological sciences," in *22nd International Conference on Virtual System & Multimedia (VSMM)* (Kuala Lumpur), 1–8.

## ACKNOWLEDGMENTS

We thank Julien Girardot during the Va'a Motu Workshop for photographs of sensing materials for coral research and the Fakarava community for their support. We also thank the dotation funds Explore-Roland Jourdain for supporting the Va'a Motu project and Air Tahiti Nui for their assistance. Help from the UCD College of Science is also greatly appreciated.

- Klein, G. T., Lu, Y., and Wang, M. Y. (2013). 3D printing and neurosurgery—ready for prime time? *World Neurosurg.* 80, 233–235. doi: 10.1016/j.wneu.2013.07.009
- Kodama, H. (1981). Automatic method for fabricating a three-dimensional plastic model with photo-hardening polymer. *Rev. Sci. Instrum.* 52, 1770–1773. doi: 10.1063/1.1136492
- Kramer, A., Francour, P., Lescinski, J. M., Gautier-Debernardi, J., and Dini, E. (2016). "3D printed reefs as an enrichment for natural habitats," in *Proceedings of the 13th International Coral Reef Symposium* (Honolulu, HI), 19–24.
- Kuzminsky, S. C., and Gardiner, M. S. (2012). Three-dimensional laser scanning: potential uses for museum conservation and scientific research. *J. Archaeol. Sci.* 39, 2744–2751. doi: 10.1016/j.jas.2012.04.020
- McGurk, M., Potamianos, P., Amis, A. A., and Goodger, N. M. (1997). Rapid prototyping techniques for anatomical modelling in medicine. *Ann. R. Coll. Surg. Engl.* 79:169–174.
- Partridge, R., Conlisk, N., and Davies, J. A. (2012). In-lab three-dimensional printing. *Organogenesis* 8, 22–27. doi: 10.4161/org.20173
- Rengier, F., Mehndiratta, A., von Tengg-Koblogk, H., Zechmann, C. M., Unterhinninghofen, R., Segerman, H. (2012). 3D Printing for mathematical visualisation. *Math. Intell.* 34, 56–62. doi: 10.1007/s00283-012-9319-7
- Segerman, H. (2012). 3D Printing for mathematical visualisation. *Math. Intell.* 34, 56–62.
- Tomaka, A., Luchowski, L., and Skabek, K. (2009). "From Museum Exhibits to 3D Models," in *Man-Machine Interactions*, eds K. A. Cyran, S. Kozielski, J. F. Peters, U. Stanczyk, and A. Wakulicz-Deja (Berlin: AISC), 477–489.
- Wachowiak, M. J., and Karas, B. V. (2009). 3D scanning and replication for museum and cultural heritage applications. *JAIC* 48, 141–158. doi: 10.1179/019713609804516992

**Conflict of Interest Statement:** The authors declare that the research was conducted in the absence of any commercial or financial relationships that could be construed as a potential conflict of interest.

Copyright © 2018 Gutierrez-Heredia, Keogh and Reynaud. This is an open-access article distributed under the terms of the Creative Commons Attribution License (CC BY). The use, distribution or reproduction in other forums is permitted, provided the original author(s) and the copyright owner(s) are credited and that the original publication in this journal is cited, in accordance with accepted academic practice. No use, distribution or reproduction is permitted which does not comply with these terms.