



OPEN ACCESS

EDITED BY

Tobias Alexander,
Charité University Medicine Berlin, Germany

REVIEWED BY

Yan Du,
Zhejiang University, China
Saptarshi Sinha,
University of California, San Diego,
United States

*CORRESPONDENCE

Geng Yin

✉ yingeng1975@163.com

Yi Li

✉ liyiscu@126.com

†These authors share senior authorship

RECEIVED 27 June 2024

ACCEPTED 25 October 2024

PUBLISHED 11 November 2024

CITATION

Guo Y, Liu H, Chen B, Zhang K, Meng L,
Yan L, Niu Q, Zhang J, Yin G and Li Y (2024)
Dysregulated CD38 expression on T cells
was associated with rapidly progressive
interstitial lung disease in anti-melanoma
differentiation-associated gene 5
positive dermatomyositis.
Front. Immunol. 15:1455944.
doi: 10.3389/fimmu.2024.1455944

COPYRIGHT

© 2024 Guo, Liu, Chen, Zhang, Meng, Yan, Niu,
Zhang, Yin and Li. This is an open-access
article distributed under the terms of the
[Creative Commons Attribution License \(CC BY\)](https://creativecommons.org/licenses/by/4.0/).
The use, distribution or reproduction in other
forums is permitted, provided the original
author(s) and the copyright owner(s) are
credited and that the original publication in
this journal is cited, in accordance with
accepted academic practice. No use,
distribution or reproduction is permitted
which does not comply with these terms.

Dysregulated CD38 expression on T cells was associated with rapidly progressive interstitial lung disease in anti-melanoma differentiation-associated gene 5 positive dermatomyositis

Yixue Guo^{1,2,3}, Hongjiang Liu⁴, Bo Chen⁴, Keyi Zhang^{1,2,3},
Liye Meng^{1,2,3}, Lin Yan^{1,2,3}, Qian Niu^{1,2,3}, Junlong Zhang^{1,2,3},
Geng Yin^{5*†} and Yi Li^{1,2,3*†}

¹Department of Laboratory Medicine, West China Hospital, Sichuan University, Chengdu, China,

²Sichuan Clinical Research Center for Laboratory Medicine, Chengdu, China, ³Clinical Laboratory Medicine Research Center of West China Hospital, Chengdu, China, ⁴Department of Rheumatology and Immunology, West China Hospital, Sichuan University, Chengdu, China, ⁵Health Management Center, General Practice Medical Center, West China Hospital, Sichuan University, Chengdu, China

Background: Anti-melanoma differentiation-associated gene 5 positive dermatomyositis (MDA5+ DM) is a life-threatening disease due to rapidly progressive interstitial lung disease (RP-ILD). We aimed to investigate the expression profile of T cell subsets in MDA5+ DM patients, seeking for possible disease-causing T cell subsets and potential biomarkers to distinguish ILD, especially RP-ILD patients.

Methods: Peripheral blood T cell subpopulations were immunophenotyped in 24 MDA5+ DM patients and 21 healthy controls (HCs) by flow cytometry. The proportion of T cell subsets and clinical characteristics were analyzed. The quantitative determination of cytokines in the plasma was measured by using a microsphere-based immunofluorescence assaying kit.

Results: The proportion of naïve and CD38+ T cells were much higher, whereas the proportion of central memory T cells were lower in MDA5+ DM patients than in HCs. Notably, the proportion of CD38+CD4+ T cells and CD38+CD8+ T cells on T cells in in RP-ILD group were significantly elevated compared to C-ILD, non-ILD group and HCs. Moreover, serum IFN- α levels were significantly increased in MDA5+ DM patients with RP-ILD. Further, the frequencies of CD38+CD4+ T cells and CD38+CD8+ T cells were positively correlated with IFN- α levels. Finally, ROC analysis indicated that CD38+CD4+ T cells and CD38+CD8+ T cells could be potential biomarkers for predicting ILD/RP-ILD in MDA5+ DM patients.

Conclusion: Dysregulated CD38 expression on T cell subsets was associated with lung involvement, especially RP-ILD in MDA5+ DM patients. CD38+ T cell subsets could be used as potential biomarkers for predicting ILD/RP-ILD in MDA5 + DM patients.

KEYWORDS

anti-MDA5 antibody, dermatomyositis, T cells, CD38, interstitial lung disease

1 Introduction

Anti-melanoma differentiation-associated gene 5-positive dermatomyositis (MDA5+ DM) is a unique subtype of idiopathic inflammatory myopathy (IIM), characterized by typical rashes, minimal muscle involvement and an increased risk of interstitial lung disease (ILD) (1, 2). Based on the presence and severity of ILD, MDA5+ DM can be divided into three subtypes: rapidly progressive ILD (RP-ILD), chronic-ILD (C-ILD) and non-ILD (3). These three subgroups each accounted for approximately one-third of the total MDA+ DM patients (4, 5). The susceptibility of MDA5+ DM patients to RP-ILD results in poor prognosis and high mortality (4). Despite receiving simultaneous therapy with corticosteroids and powerful immunosuppressive medications, MDA5+ DM-RP-ILD patients still experienced a high 6-month mortality rate ranging from 50-70% (6, 7). The exact pathogenesis underlying the critically ill MDA5+ DM patients remains to be elucidated.

The pathophysiology of several autoimmune diseases is related to aberrant T cell homeostasis, including systemic lupus erythematosus (SLE) and type 1 diabetes (8, 9). Previous studies have found that periphery T cells significantly changed in MDA5+ DM patients (10, 11). More specifically, the frequencies of CD4 +CXCR4+ T cells and ISG15+CD8+ T cells were considered to be promising prognostic biomarkers in MDA5+ DM (12, 13). However, the expression characteristics of T cell subsets in different subtypes of MDA5+ DM are still not fully studied. Additionally, the associations between T cell tolerance breach biomarkers and ILD have not been comprehensively evaluated.

Here, we comprehensively analyzed the characteristics of T cell subsets among different MDA5+ DM subpopulations, aiming to reveal new insights into the relationship between T lymphocytes and pulmonary interstitial lesions and find potential biomarkers for predicting RP-ILD in MDA5+ DM patients.

2 Materials and methods

2.1 Study subjects

24 MDA5+ DM patients were enrolled in this study, together with 21 healthy controls (HCs) matched for age and gender. All patients were treated in Department of Rheumatology and

Immunology, West China Hospital between May 2023 and December 2023, and diagnosed based on the 2017 European League Against Rheumatism/American College of Rheumatology classification criteria for IIMs (14) by professional rheumatologists. ILD was identified based on pulmonary high-resolution computed tomography (HRCT). RP-ILD was defined as a progressive deterioration of interstitial lesions within 3 months based on the radiological assessment of HRCT examination, accompanied by severe dyspnoea symptoms (15, 16). The study was reviewed and approved by the Ethics Committee of West China Hospital (2023-794), and all participants gave informed, written consent.

2.2 Data collection

Detailed patient information regarding demographics, clinical and laboratory data were collected. Laboratory data mainly include routine blood and coagulation function tests, biochemistry tests, immunoglobulin levels, complement levels and infection biomarker evaluation.

2.3 Flow cytometry

Fresh whole blood specimens were collected in EDTA tubes and used for direct antibody staining. After surface antibody staining, the specimens were treated with BD lysis buffer (BD Biosciences) to eliminate red blood cells. Flow cytometry antibodies used include CD3 (Cat# C41176, APC-A750), CD3 (Cat# C41179, FITC), CD4 (Cat# C41174, PC5.5), CD8 (Cat# C41165, APC), CD25 (Cat# C41200, PE), CD127 (Cat# C41177, PC7), CD27 (PC7), CD45RA (Cat# C41158, FITC), CD28 (Cat# C41182, PE), CD38 (Cat# C41191, APC-A750), and HLA-DR (Cat# C41192, PB450), all from Beckman coulter, USA. The stained cells were acquired in a flow cytometer (DxFLEX, Beckman coulter, USA). Flow cytometry analysis was performed with CytExpert software (Beckman Coulter, USA).

2.4 Cytokine analysis

The quantitative determination of cytokines in the plasma was performed by using a multiplex immunoassay (Saiji Biotechnology,

Jiangxi, China), which provides a microsphere-based system that allows the simultaneous analysis of multiple cytokines, including interleukin (IL)-1 β , IL-2, IL-4, IL-5, IL-6, IL-8, IL-10, IL-12p70, IL-17, interferon (IFN)- α , IFN- γ and tumor necrosis factor (TNF)- α .

2.5 Statistical analysis

SPSS21.0 (IBM, USA) was used to analyze the data. Numerical data with normal distribution and non-normal distribution were presented as mean \pm standard deviation and median (range), respectively. Statistical differences between continuous variables were determined by student's t test (between two groups) and a one-way analysis of variance (ANOVA) (between multiple groups). Differences between categorical variables were tested using Pearson's chi-square test. Potential value of CD38+CD4+ and CD38+CD8+ T cells to predict ILD or RP-ILD in MDA5+ DM patients was evaluated using receiver operating characteristic (ROC) analysis. In addition, the Youden's index was generated to evaluate the optimized cut-off point and calculate the exact sensitivity and specificity of the variable. A *P* value less than 0.05 was considered to be statistically significant.

3 Results

3.1 General characteristics

A total of 24 patients with MDA5+ DM and 21 sex- and age-matched HCs were enrolled in the study. The demographics, clinical and laboratory features of the patients were shown in **Table 1**. According to the clinical manifestations of lung involvement, MDA5+ DM patients were classified into three subgroups: RP-ILD (n = 9, 37.5%), chronic-ILD (C-ILD, n = 11, 45.8%) and non-ILD (n = 4, 16.7%). The mean age at disease onset of RP-ILD, C-ILD and non-ILD was 48.22 \pm 13.24, 42.82 \pm 7.78 and 53.50 \pm 12.45 years, respectively. In addition, there were no significant differences in clinical parameters and laboratory indicators between C-ILD and RP-ILD patients. Extensive clinical characteristics and laboratory parameters of these three groups were detailed in **Table 1**.

3.2 Expression profile of T cell subsets in peripheral blood of MDA5+ DM patients

To investigate the distribution of T cell subsets in the peripheral blood of MDA5+ DM patients, we measured the percentages of T cell

TABLE 1 Comparison of clinical and laboratory characteristics of MDA5 positive DM patients (with RP-ILD, C-ILD and non-ILD).

Variables	RP-ILD n = 9	C-ILD n = 11	non-ILD n = 4	<i>P</i> value*
Demographics				
Female, no. (%)	7 (77.8)	10 (90.9)	3 (75)	0.566
Age at onset, years	48.22 \pm 13.24	42.82 \pm 7.78	53.50 \pm 12.45	0.270
Clinical variables				
Gottron papules, no. (%)	1 (11.1)	2 (18.2)	1 (25)	1.000
Mechanic's hands, no. (%)	1 (11.1)	1 (9.1)	0 (0)	1.000
V-neck sign, no. (%)	1 (11.1)	3 (27.3)	0 (0)	0.591
Shawl sign, no. (%)	0 (0)	2 (18.2)	0 (0)	0.479
Skin ulceration, no. (%)	2 (22.2)	3 (27.3)	0 (0)	1.000
Myalgia, no. (%)	5 (55.6)	3 (27.3)	1 (25)	0.362
Muscle weakness, no. (%)	2 (22.2)	3 (27.3)	1 (25)	1.000
Cough, no. (%)	5 (55.6)	7 (63.6)	2 (50)	1.000
Breathing difficulty, no. (%)	4 (44.4)	4 (36.4)	1 (25)	1.000
Velcro rales, no. (%)	4 (44.4)	2 (18.2)	1 (25)	0.336
Laboratory features				
Hb, g/L	122.22 \pm 19.21	112.09 \pm 13.92	131.75 \pm 8.85	0.188
Lym, $\times 10^9/L$	0.81 \pm 0.49	0.82 \pm 0.41	1.55 \pm 0.93	0.967
Alb, g/L	34.87 \pm 3.71	36.93 \pm 5.06	41.38 \pm 4.10	0.323
Glu, mmol/L	5.28 \pm 2.42	4.77 \pm 1.30	5.07 \pm 1.14	0.553

(Continued)

TABLE 1 Continued

Variables	RP-ILD n = 9	C-ILD n = 11	non-ILD n = 4	P value*
Laboratory features				
TG, mmol/L	1.63±0.55	2.10±0.77	2.48±1.34	0.147
TC, mmol/L	4.57±1.00	4.52±1.41	5.58±0.77	0.932
HDL-C, mmol/L	1.32±0.69	1.94±3.14	1.41±0.31	0.572
LDL-C, mmol/L	2.71±0.72	2.72±1.13	3.48±0.98	0.973
CK, IU/L	29.44±11.82	66.82±86.82	49.25±32.90	0.218
LDH, IU/L	359.89±85.52	315.91±176.98	312.75±32.26	0.505
HBDH, IU/L	281.44±69.58	241.00±137.12	244.50±26.79	0.433
IgG, g/L	15.28±10.69	12.18±3.51	10.17±2.15	0.400
IgA, mg/L	1793.25±697.81	2292.00±973.30	2817.50±1711.54	0.241
IgM, mg/L	1766.00±1058.39	1369.80±792.21	1380.50±873.92	0.376
C3, g/L	0.94±0.13	0.98±0.16	0.86±0.14	0.673
C4, g/L	0.31±0.12	0.28±0.05	0.22±0.05	0.546
CRP, mg/dL	28.29±38.14	18.68±23.38	2.36±1.31	0.505
ESR, mm/h	57.00±22.63	35.60±27.61	34.00±0.00	0.382
D-dimer, mg/L	3.36±4.32	1.28±1.25	0.16±0.00	0.219

RP-ILD, rapidly progressive interstitial lung disease; C-ILD, chronic interstitial lung disease; Hb, hemoglobin; Lym, lymphocyte count; Alb, albumin; Glu, glucose; TG, triglyceride; TC, total cholesterol; HDL-C, high-density lipoprotein cholesterol; LDL-C, low-density lipoprotein cholesterol; CK, creatine kinase; LDH, lactate dehydrogenase; HBDH, hydroxybutyrate dehydrogenase; IgG, immunoglobulin G; IgA, immunoglobulin A; IgM, immunoglobulin M; C3, complement component 3; C4, complement component 4; CRP, C-reactive protein; ESR, erythrocyte sedimentation rate.

* The P-value here is an indicator used to evaluate whether the difference between the RP-ILD and C-ILD groups is statistically significant.

subpopulation by flow cytometry to identify naïve, central memory, effector, revertant effector memory and active subsets. Representative flow cytometry charts depicting the gating strategy for these T cell subsets were shown in [Figure 1](#). We comprehensively evaluated the percentage of T cell subsets between MDA5+ DM patients and HCs ([Figure 2](#)). The proportion of naïve CD4+ T cells (T4N), naïve CD8+ T cells (T8N), CD38+CD4+ T cells and CD38+CD8+ T cells were much higher (T4N $P = 0.0002$; T8N, $P = 0.0022$; CD38+CD4+ T cells, $P < 0.0001$; CD38+CD8+ T cells, $P = 0.0023$), whereas the proportion of central memory CD4+ T cells (T4CM) and T8CM cells were lower in MDA5+ DM patients than in HCs (T4CM, $P = 0.0010$; T8CM, $P < 0.0001$). There were no statistically significant differences in other T cell subsets between MDA5+ DM patients and HCs. ([Figure 2](#)). These results indicated that T cell subsets were dysregulated in MDA5+ DM patients and might be involved in the pathogenesis.

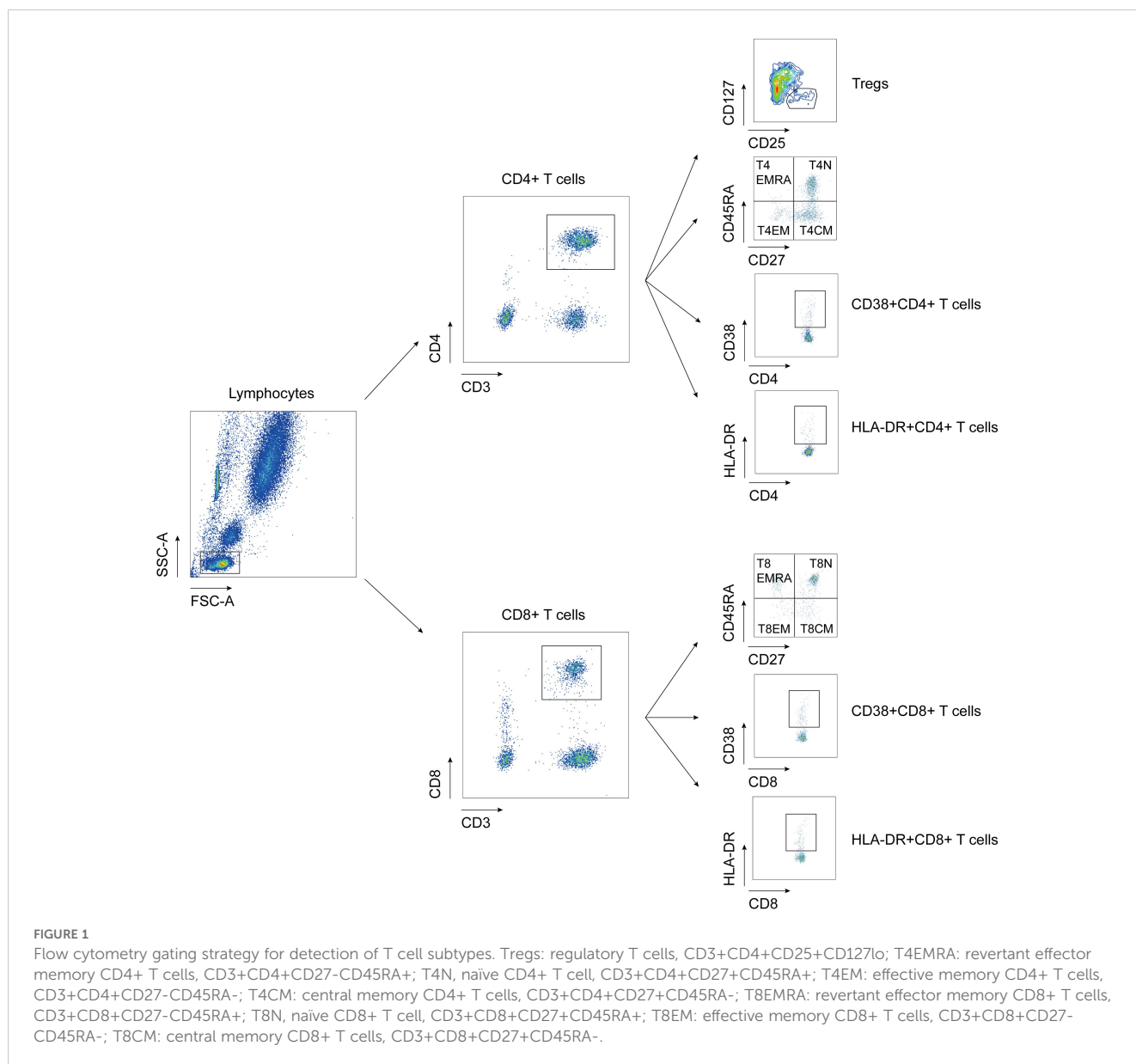
3.3 The frequencies of CD38+CD4+ and CD38+CD8+ T cells were increased in MDA5+ DM patients with RP-ILD

We next sought to assess whether these T cell subset alterations were associated with interstitial lung damage features of MDA5+ DM patients. To address this issue, we comprehensively measured the

above-mentioned abnormally expressed cell subpopulations (T4N, T8N, T4CM, T8CM, CD38+CD4+ T cells, CD38+CD8+ T cells) among MDA5+ DM subgroups and HCs. There was no significant difference of the percentage of T4N, T8N, T4CM and T8CM among MDA5+ DM subgroups (data not shown). Surprisingly, the proportion of CD38+CD4+ T cells were significantly elevated in RP-ILD group compared to C-ILD group, non-ILD group and HCs, respectively ([Figure 3A](#), RP-ILD vs. C-ILD, $P = 0.0429$; RP-ILD vs. non-ILD, $P = 0.0119$; RP-ILD vs. HC, $P < 0.0001$). Additionally, the percentage of CD38+CD8+ T cells were also significantly up-regulated in RP-ILD group as compared with C-ILD group, non-ILD group and HCs, respectively ([Figure 3B](#), RP-ILD vs. C-ILD, $P = 0.0018$; RP-ILD vs. non-ILD, $P = 0.0195$; RP-ILD vs. HC, $P < 0.0001$). The representative flow cytometry dot plots of each group are shown in [Figures 3C, D](#).

3.4 Correlation analysis of CD38+CD4+ and CD38+CD8+ T cells with MDA5+ DM patient clinical features

To further explore the correlation between these two abnormally expressed T cell subsets (CD38+CD4+ and CD38+CD8+ T cells) and disease condition. We performed a correlation analysis between these



two subgroups of T cells and conventional laboratory parameters. Our results showed that the percentage of CD38+CD4+ T cells were positively associated with C-reactive protein (CRP, $r = 0.466$, $P = 0.025$), while negative correlation with triglyceride (TG, $r = -0.509$, $P = 0.011$) and immunoglobulin A (IgA, $r = -0.426$, $P = 0.048$) in MDA5+ DM patients. In addition, we found that the frequencies of CD38+CD8+ T cells were negatively correlated with albumin (Alb, $r = -0.435$, $P = 0.033$) (Figure 4). These results suggested that abnormal expression of these T cell subsets might be related to disease activity and lipid metabolism.

Previous studies reported that the levels of pro-inflammatory cytokines in the serum of patients with MDA5+ DM-ILD are significantly increased (17–21). In order to assess the relationship between these two T cell subsets and serum cytokine profiles, we determined circulating multiple cytokines including interleukin (IL)-

1 β , IL-2, IL-4, IL-5, IL-6, IL-8, IL-10, IL-12p70, IL-17, interferon (IFN)- α , IFN- γ and tumor necrosis factor (TNF)- α by the microsphere-based multiplex technique. We first evaluated the levels of these cytokines among MDA5+ DM subgroups. Our results showed that serum IFN- α levels in RP-ILD group were significantly elevated compared to C-ILD and non-ILD group (Figure 5A, RP-ILD vs. C-ILD, $P = 0.0075$; RP-ILD vs. non-ILD, $P = 0.0118$). Additionally, the level of IL-8 was also higher in MDA5+ DM patients with ILD, although the difference did not reach statistical significance (Figure 5B). No meaningful differences were found in other cytokines (data not shown). Then we analyzed the correlation between these two T cell subsets and abnormal expression of cytokines (TNF- α and IL-8). More excitingly, our results found that both the frequencies of CD38+CD4+ and CD38+CD8+ T cells were positively correlated with IFN- α levels (Figure 5C, $r = 0.250$, $P = 0.240$; Figure 5D, $r = 0.519$, $P = 0.009$). The results indicated that CD38+CD4

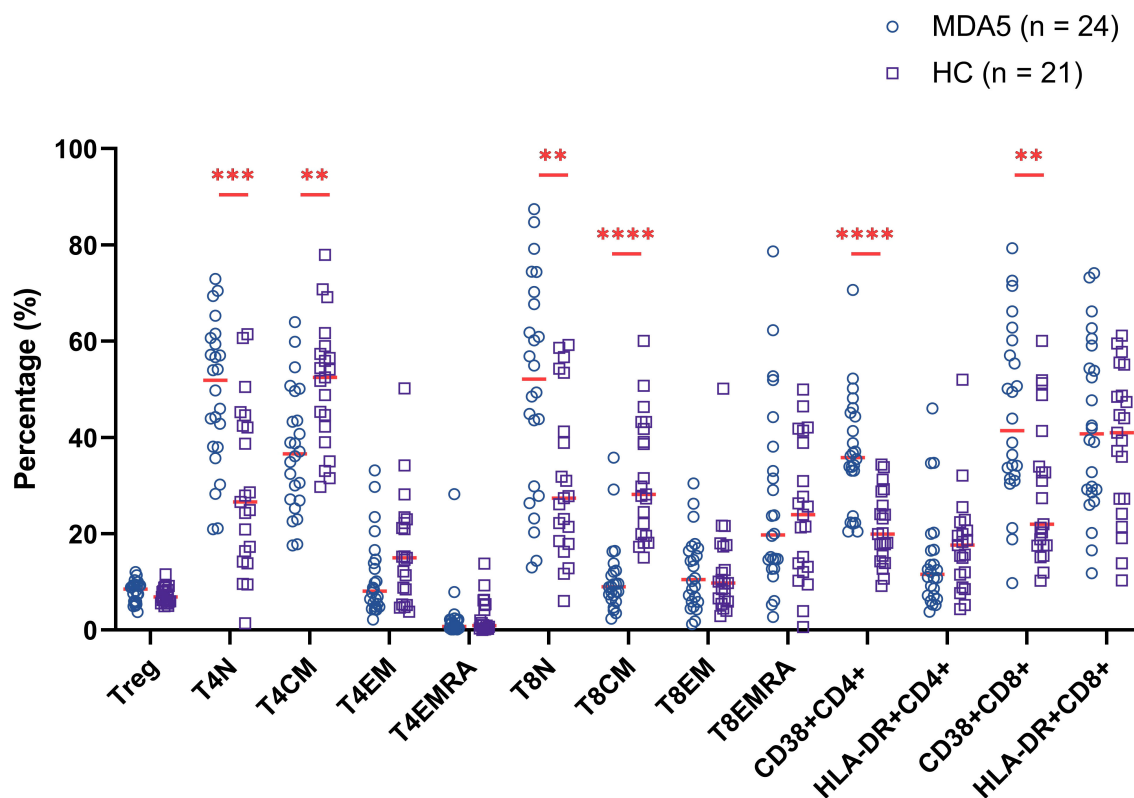


FIGURE 2

Comparison of percentage of T cell subsets between MDA5+ DM patients and healthy controls (HCs). (** $P < 0.01$, *** $P < 0.001$, **** $P < 0.0001$).

+ and CD38+CD8+ T cells might be involved in the pathogenesis of lung involvement in MDA5+ DM patients through interferon pathway.

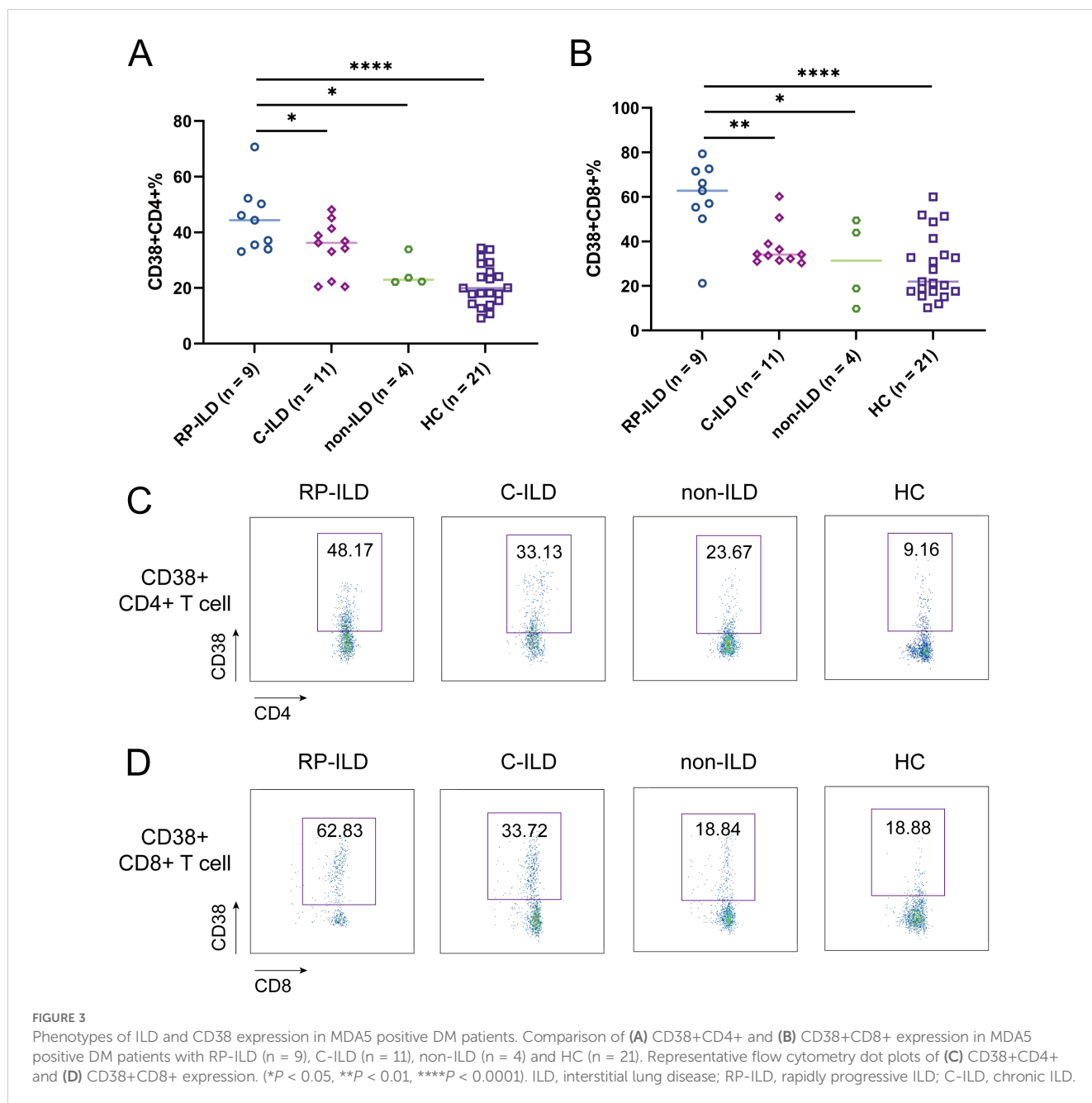
3.5 Potential value of CD38+CD4+ and CD38+CD8+ T cells to predict ILD or RP-ILD in MDA5+ DM patients

In the ROC analysis, the proportion of CD38+CD4+ T cells predicted ILD with an area under the curve (AUC) of 0.910 (95% CI = 0.823-0.997; sensitivity = 85%; specificity = 88%; $P < 0.0001$), and the cut-off value was 32.18% (Figure 6A). The percentage of CD38+CD8+ T cells predicted ILD with an AUC of 0.801 (95% CI = 0.675-0.927; sensitivity = 95%; specificity = 56%; $P = 0.0006$), and the cut-off value was 28.90% (Figure 6B). Further, we analyzed the predictive value of these two T cell subsets in predicting RP-ILD. The optimal cut-off value for the proportion of CD38+CD4+ T cells was 32.18% (AUC = 0.901; 95% CI = 0.808-0.994; sensitivity = 100%; specificity = 69.44%; $P = 0.0002$), and the percentage of CD38+CD8+ T cells was 49.82% (AUC = 0.895; 95% CI = 0.750-1.000; sensitivity = 88.89%; specificity = 86.11%; $P = 0.0003$) (Figures 6C, D). These results suggested that CD38+CD4+ and CD38+CD8+ T cells could be potential biomarkers for predicting ILD/RP-ILD in MDA5+ DM patients.

4 Discussion

In the current study, we described the expression profiles of T cell subsets and their correlation with ILD in MDA5+ DM patients. We have shown that the proportion of naïve T4N, T8N, CD38+CD4+ T cells and CD38+CD8+ T cells were much higher, while the proportion of T4CM and T8CM cells were lower in MDA5+ DM patients than in HCs. Notably, the proportion of CD38+CD4+ T cells and CD38+CD8+ T cells were significantly elevated in RP-ILD group compared to C-ILD group, non-ILD group and HCs. Moreover, our data demonstrated that serum IFN- α levels in RP-ILD group were significantly elevated compared to C-ILD and non-ILD group. Further, we found that both the frequencies of CD38+CD4+ T cells and CD38+CD8+ T cells were positively correlated with IFN- α levels. Finally, our results indicated that CD38+CD4+ T cells and CD38+CD8+ T cells could be potential biomarkers for predicting ILD/RP-ILD in MDA5+ DM patients. Taken together, our results suggested that dysregulation of CD38 expression on T cells was associated with RP-ILD in MDA5+ DM patients.

MDA5+ DM patients have gained increasing clinical attention as about one-third of these patients develop RP-ILD and have a very poor outcome (5, 22, 23). At present, knowledge regarding the exact etiology and pathogenesis of MDA5+ DM patients is still lacking; however, inflammatory mediators and various immune cells are



implicated (24). Notably, an increasing number of studies demonstrated that abnormal T lymphocyte-mediated autoimmune responses may play an important role in the pathogenesis of ILD in MDA5+ DM patients (11–13, 25–28). Despite an overall decrease in the number of T cells in patients with MDA5+ DM (29), researchers also noted expanded populations of specific T cell subsets in MDA5+DM, which correlated with disease severity. For example, Wang et al. reported that the percentage of CD4+CXCR4+ T cells was elevated in the peripheral blood and bronchoalveolar lavage fluid of IIM patients with ILD compared with IIM patients without ILD and HCs. Their studies have shown that the subgroup of CD4+CXCR4+ T cells was related to the presence of anti-MDA5 antibodies and pulmonary fibroblast proliferation (12). Subsequently, Huang et al.

observed that the presence of ILD in patients with MDA5+ DM patients was positively associated with peripheral blood T lymphocyte counts (11). Single-cell RNA sequencing analyses have shown that MDA5+ DM patients has a unique adaptive immune landscape characterized by hyperactivation of type I IFN signaling and aberrant metabolic reprogramming. Such analysis identified a peripheral CD8+ T cell subset characterized by expression of high levels of IFN-stimulated gene product 15 (ISG15), representing a promising prognostic biomarker in MDA5+ DM patients (13). Additionally, single-cell RNA sequencing of lung tissue highlighted several immune cell types that may be involved in the pathophysiology of MDA5+ DM lung disease, including ISG15+ CD4+ T cells, ISG15+ CD8+ T cells, and proliferating CD8+ T cells

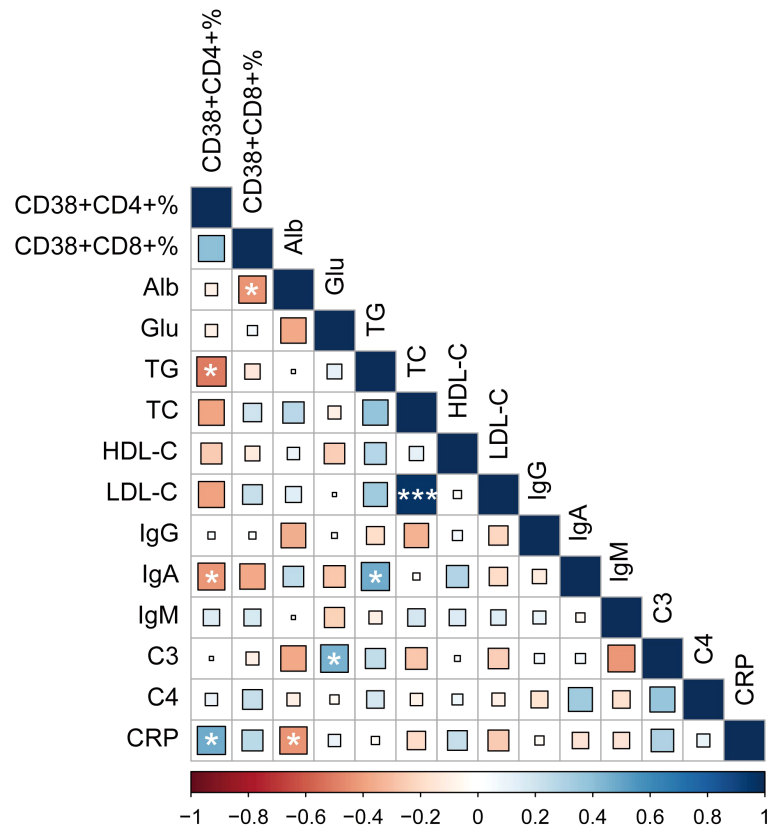


FIGURE 4

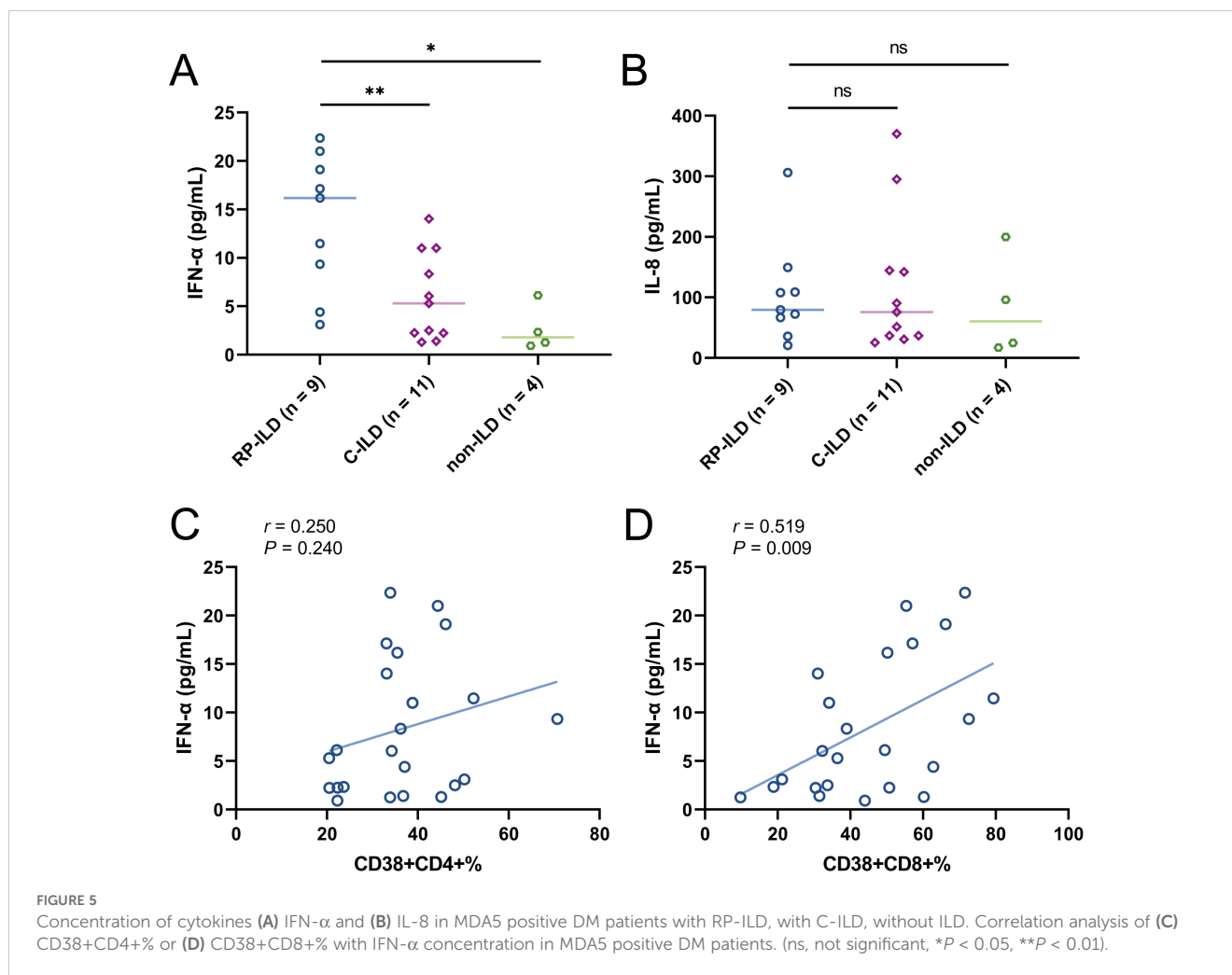
Heatmap of associations between CD38 expression and common clinical variables, with blue as positive correlation and red as negative correlation. (* $P < 0.05$, *** $P < 0.001$). Alb, albumin; Glu, glucose; TG, triglyceride; TC, total cholesterol; HDL-C, high-density lipoprotein cholesterol; LDL-C, low-density lipoprotein cholesterol; IgG, immunoglobulin G; IgA, immunoglobulin A; IgM, immunoglobulin M; C3, complement component 3; C4, complement component 4; CRP, C-reactive protein.

(13). The above studies have confirmed that T cells, especially certain T cell subsets, may be involved in the occurrence and development of MDA5+ DM.

In the present study, we found that certain T cell subsets are abnormally expressed in MDA5+ DM patients, which is similar to previously reported studies (11, 12, 26). However, our study mainly focused on changes in T cell subsets in different MDA5+ DM subtypes. Notably, we observed that CD38+CD4+ and CD38+CD8+ T cells were significantly increased in MDA5+ DM patients with RP-ILD compared with MDA5 DM patients with C-ILD and non-ILD. In other words, increased expression of CD38 on both CD4+ and CD8+ T cells in MDA5+ DM patients is associated with disease progression of lung involvement. CD38 is a multi-functional extracellular enzyme on the cell surface with nicotinamide adenine dinucleotide glycohydrolase (NADase) and cyclase activities (30, 31). Multiple studies have shown that CD38 plays an important role in regulating T cell function (32–34). The expression level of CD38 on T cells may also be related to infection by pathogenic microorganisms such as viruses (35, 36). As we all know, MDA5 is a cytoplasmic pattern recognition receptor that can recognize foreign dsRNA and is sensitive to viruses. Several studies have also suggested that the occurrence and development of MDA5+ DM may be related to viral infection

(24). Additionally, due to the observed seasonality in the incidence and clinical characteristics of MDA5+ DM, it is speculated that viruses may also serve as triggering factors for MDA5+ DM (20, 21). In support of this, there have been reports of cases where MDA5+ DM has occurred following COVID-19 infection or vaccination (37–40). Our results found that CD38 expression was increased on T cells in MDA5+ DM patients with RP-ILD, which further supporting that this type of patients is related to viral infection.

The exact pathogenesis of MDA5+ DM remains unclear, but there is a general agreement on the involvement of type I IFN hyperactivation in the disease process. Recent research has shown elevated type I IFN signals in the peripheral blood, skin, and muscle tissue of MDA5+ DM patients, even in cases with mild or no myopathy (41–45). The study revealed a significant increase in serum IFN- α levels in the RP-ILD group compared to both the C-ILD and non-ILD groups. Additionally, our findings demonstrated a positive correlation between the frequencies of CD38+CD4+ and CD38+CD8+ T cells and IFN- α levels. These results suggest that CD38+ T cell subsets may play a role in the development of lung complications in MDA5+ DM patients via the interferon pathway. Recently, multiple research teams have reported successful cases of the anti-CD38 monoclonal antibody daratumumab in the treatment of refractory MDA5+ DM patients with RP-ILD (46–48). Two of



the three cases had received treatment with rituximab, an anti-CD20 monoclonal antibody that depletes B cells, but had no effect (46, 48). The first report on the application of daratumumab showed that after 6 months of follow-up, the patient's condition reached stable remission, the lungs improved significantly, and CD38+ plasma cells and MDA5 antibody titers continued to decrease (46). Daratumumab targets CD38+ cells, including CD38+ plasma cells and CD38+ T cells. Considering that B cell depletion therapy is less effective in MDA5+ DM patients with RP-ILD, daratumumab can achieve better therapeutic effects, probably because it depletes CD38+ T cells. Therefore, from the perspective of therapeutic effect, increased CD38+ T cells are likely to be involved in the progression of MDA5+ DM. However, further studies are needed to clarify this putative mechanism.

The prognosis of the three subtypes of MDA5+ DM is significantly different, and the 6-month mortality rate for MDA5+ DM-RP-ILD patients was reported to be as high as 50–70% (6, 7). Hence, early risk stratification of patients with MDA5+ DM is particularly important. In our study, we observed that the proportion of CD38+CD4+ T cells and CD38+CD8+ T cells

could be used as potential biomarkers for predicting ILD/RP-ILD in MDA5+ DM patients. Additionally, there were no significant differences in clinical parameters and laboratory indicators between C-ILD and RP-ILD patients in our cohort, which further demonstrates the important value of CD38 as a differential indicator for RP-ILD. Although previous studies have mentioned that image-based parameters (e.g., pulmonary high resolution CT score) and pathophysiology parameters (e.g., forced vital capacity) could stratify the disease, these indicators mostly appear in the progressive stage of the disease (49–51). We speculate that the expression changes of CD38 in T cell subsets are likely to appear in the early stages of the disease and subsequently participate in the development of the disease. However, this still needs to be confirmed by further mechanism studies.

Our study has some limitations. First, we mainly analyzed the surface markers of T cells and did not evaluate subpopulations such as regulatory T cells and Th17 that rely on intracellular staining. Second, this study did not evaluate changes in T cell subsets after treatment. We schedule comprehensively studying the role and molecular mechanisms of T cell subsets, especially CD38+ T cells, in

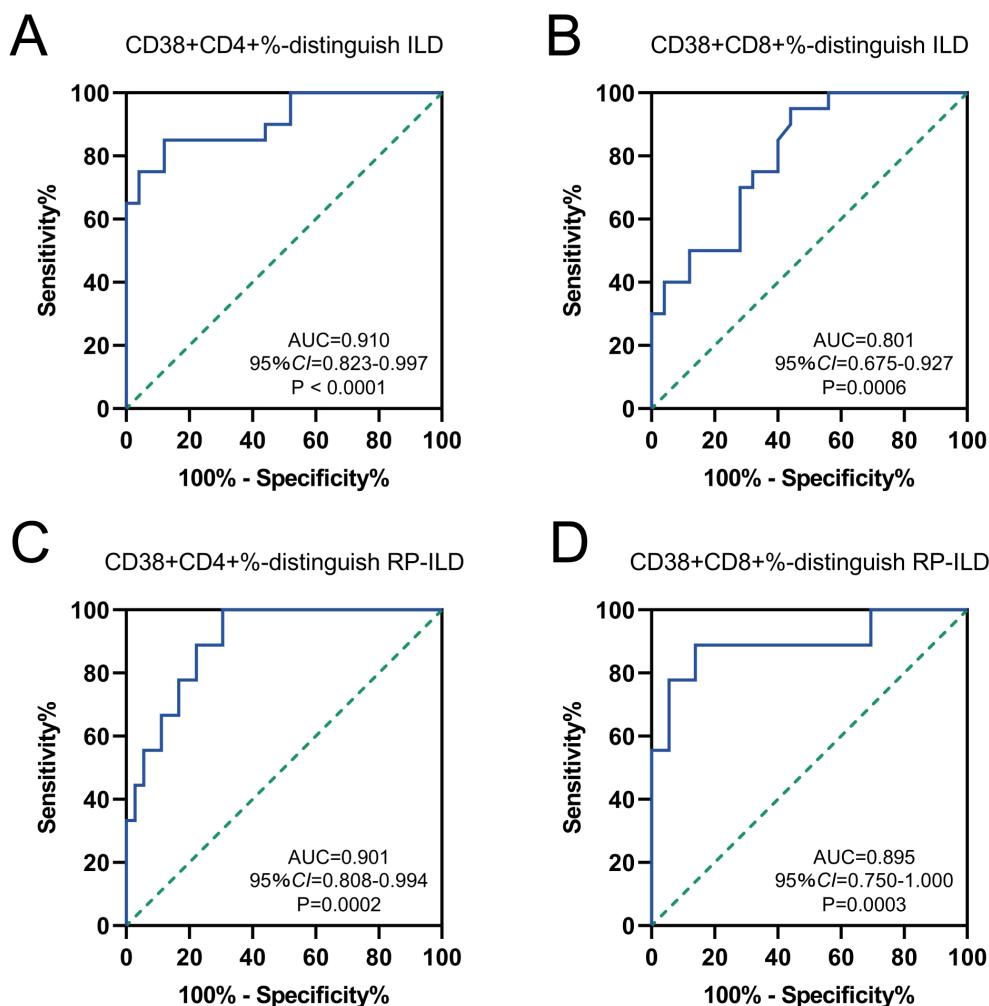


FIGURE 6

Diagnostic performance of CD38 expression to distinguish MDA5 positive DM patients with or without ILD/RP-ILD. Receiver operating characteristic (ROC) curves for the ability of (A) CD38+CD4+% and (B) CD38+CD8+% to distinguish individuals with ILD from normal controls. ROC curves for the ability of (C) CD38+CD4+% and (D) CD38+CD8+% to distinguish individuals with RP-ILD from other controls.

the pathogenesis of MDA5+ DM in the near future. We hope to elucidate how CD38 affects the expression of IFN- α and participates in the exacerbation of ILD in MDA5+ DM.

In summary, here we described for the first time the dysregulated CD38 expression on T cell subsets was associated with lung involvement, especially RP-ILD in MDA5+ DM patients. Increased CD38+ T cell subsets might aggravate ILD progression of MDA5+ DM through activating the type I IFN pathway, which provides a novel clue to the mechanism of lung exacerbation and therapeutic target for CD38 positive cells in patients of MDA5+ DM.

Data availability statement

The original contributions presented in the study are included in the article/supplementary material. Further inquiries can be directed to the corresponding authors.

Ethics statement

The studies involving humans were approved by the Ethics Committee of West China Hospital (2023–794). The studies were conducted in accordance with the local legislation and institutional requirements. The participants provided their written informed consent to participate in this study.

Author contributions

YG: Data curation, Formal analysis, Visualization, Writing – original draft. HL: Data curation, Resources, Writing – original draft. BC: Data curation, Resources, Visualization, Writing – original draft. KZ: Formal analysis, Validation, Writing – original draft. LM: Formal analysis, Validation, Writing – original draft. LY: Funding acquisition, Project administration, Writing – review &

editing. QN: Funding acquisition, Project administration, Writing – review & editing. JZ: Methodology, Project administration, Supervision, Writing – review & editing. GY: Conceptualization, Project administration, Writing – review & editing. YL: Conceptualization, Project administration, Writing – review & editing.

Funding

The author(s) declare that financial support was received for the research, authorship, and/or publication of this article. This work was supported by Sichuan Science and Technology Program (2024NSFSC1540, 2024YFFK0349) and National Natural Science Foundation of China (No. 82472346, No. 82102466, No. 82272400).

References

- Lundberg IE, Fujimoto M, Vencovsky J, Aggarwal R, Holmqvist M, Christopher-Stine L, et al. Idiopathic inflammatory myopathies. *Nat Rev Dis Primers*. (2021) 7:86. doi: 10.1038/s41572-021-00321-x
- Allenbach Y, Uzunhan Y, Toquet S, Leroux G, Gally L, Marquet A, et al. Different phenotypes in dermatomyositis associated with anti-MDA5 antibody: Study of 121 cases. *Neurology*. (2020) 95:e70–8. doi: 10.1212/WNL.00000000000009727
- Xu L, You H, Wang L, Lv C, Yuan F, Li J, et al. Identification of three different phenotypes in anti-melanoma differentiation-associated gene 5 antibody-positive dermatomyositis patients: implications for prediction of rapidly progressive interstitial lung disease. *Arthritis Rheumatol*. (2023) 75:609–19. doi: 10.1002/art.42308
- Wu W, Guo L, Fu Y, Wang K, Zhang D, Xu W, et al. Interstitial lung disease in anti-MDA5 positive dermatomyositis. *Clin Rev Allergy Immunol*. (2021) 60:293–304. doi: 10.1007/s12016-020-08822-5
- Motegi SI, Sekiguchi A, Toki S, Kishi C, Endo Y, Yasuda M, et al. Clinical features and poor prognostic factors of anti-melanoma differentiation-associated gene 5 antibody-positive dermatomyositis with rapid progressive interstitial lung disease. *Eur J Dermatol*. (2019) 29:511–17. doi: 10.1684/ejd.2019.3634
- Li T, Guo L, Chen Z, Gu L, Sun F, Tan X, et al. Pirfenidone in patients with rapidly progressive interstitial lung disease associated with clinically amyopathic dermatomyositis. *Sci Rep*. (2016) 6:33226. doi: 10.1038/srep33226
- Romero-Bueno F, Diaz Del Campo P, Trallero-Araguas E, Ruiz-Rodriguez JC, Castellvi I, Rodriguez-Nieto MJ, et al. Recommendations for the treatment of anti-melanoma differentiation-associated gene 5-positive dermatomyositis-associated rapidly progressive interstitial lung disease. *Semin Arthritis Rheumatol*. (2020) 50:776–90. doi: 10.1016/j.semarthrit.2020.03.007
- Tenbrock K, Rauen T. T cell dysregulation in SLE. *Clin Immunol*. (2022) 239:109031. doi: 10.1016/j.clim.2022.109031
- Long SA, Thorpe J, DeBerg HA, Gersuk V, Eddy J, Harris KM, et al. Partial exhaustion of CD8 T cells and clinical response to teplizumab in new-onset type 1 diabetes. *Sci Immunol*. (2016) 1:eaa17793. doi: 10.1126/sciimmunol.aai17793
- Xu YT, Cao ZY, Lin S, Shu XM, Lu X, Wang GC, et al. Expansion of exhausted CD8+ T cells associates with increased pulmonary fungal infection risk in anti-melanoma differentiation associated gene 5 dermatomyositis. *Clin Exp Rheumatol*. (2023) 42(2):237–45. doi: 10.55563/clinexp/rheumatol/e51d3m
- Huang W, Ren F, Luo L, Zhou J, Huang D, Pan Z, et al. The characteristics of lymphocytes in patients positive for anti-MDA5 antibodies in interstitial lung disease. *Rheumatol (Oxford)*. (2020) 59:3886–91. doi: 10.1093/rheumatology/keaa266
- Wang K, Zhao J, Chen Z, Li T, Tan X, Zheng Y, et al. CD4+CXCR4+ T cells as a novel prognostic biomarker in patients with idiopathic inflammatory myopathy-associated interstitial lung disease. *Rheumatol (Oxford)*. (2019) 58:511–21. doi: 10.1093/rheumatology/key341
- Ye Y, Chen Z, Jiang S, Jia F, Li T, Lu X, et al. Single-cell profiling reveals distinct adaptive immune hallmarks in MDA5+ dermatomyositis with therapeutic implications. *Nat Commun*. (2022) 13:6458. doi: 10.1038/s41467-022-34145-4
- Lundberg IE, Tjarnlund A, Bottai M, Werth VP, Pilkington C, Visser M, et al. 2017 European League Against Rheumatism/American College of Rheumatology classification criteria for adult and juvenile idiopathic inflammatory myopathies and their major subgroups. *Ann Rheum Dis*. (2017) 76:1955–64. doi: 10.1136/annrheumdis-2017-211468

Conflict of interest

The authors declare that the research was conducted in the absence of any commercial or financial relationships that could be construed as a potential conflict of interest.

Publisher's note

All claims expressed in this article are solely those of the authors and do not necessarily represent those of their affiliated organizations, or those of the publisher, the editors and the reviewers. Any product that may be evaluated in this article, or claim that may be made by its manufacturer, is not guaranteed or endorsed by the publisher.

- Raghu G, Remy-Jardin M, Myers JL, Richeldi L, Ryerson CJ, Lederer DJ, et al. Diagnosis of idiopathic pulmonary fibrosis. An official ATS/ERS/JRS/ALAT clinical practice guideline. *Am J Respir Crit Care Med*. (2018) 198:e44–68. doi: 10.1164/rccm.201807-1255ST
- Rajan SK, Cottin V, Dhar R, Danoff S, Flaherty KR, Brown KK, et al. Progressive pulmonary fibrosis: an expert group consensus statement. *Eur Respir J*. (2023) 61:2103187. doi: 10.1183/13993003.03187-2021
- Wang C, Yang H, Li T, Wen Y, Yang H, Tang W, et al. Analysis of characteristics related to interstitial lung disease or pulmonary hypertension in patients with dermatomyositis. *Clin Respir J*. (2023) 17:1328–40. doi: 10.1111/crj.v17.12
- Hensgens MPM, Delemarre EM, Drylewicz J, Voortman M, Krol RM, Dalm V, et al. Clinical features and immune-related protein patterns of anti-MDA5 positive clinically amyopathic dermatomyositis Dutch patients. *Rheumatol (Oxford)*. (2022) 61:4087–96. doi: 10.1093/rheumatology/keac030
- Takada T, Ohashi K, Hayashi M, Asakawa K, Sakagami T, Kikuchi T, et al. Role of IL-15 in interstitial lung diseases in amyopathic dermatomyositis with anti-MDA-5 antibody. *Respir Med*. (2018) 141:7–13. doi: 10.1016/j.rmed.2018.06.012
- Chen M, Quan C, Diao L, Xue F, Xue K, Wang B, et al. Measurement of cytokines and chemokines and association with clinical severity of dermatomyositis and clinically amyopathic dermatomyositis. *Br J Dermatol*. (2018) 179:1334–41. doi: 10.1111/bjd.2018.179.issue-6
- Gono T, Kaneko H, Kawaguchi Y, Hanaoka M, Kataoka S, Kuwana M, et al. Cytokine profiles in polymyositis and dermatomyositis complicated by rapidly progressive or chronic interstitial lung disease. *Rheumatol (Oxford)*. (2014) 53:2196–203. doi: 10.1093/rheumatology/keu258
- Moghadam-Kia S, Oddis CV, Sato S, Kuwana M, Aggarwal R. Anti-melanoma differentiation-associated gene 5 is associated with rapidly progressive lung disease and poor survival in US patients with amyopathic and myopathic dermatomyositis. *Arthritis Care Res (Hoboken)*. (2016) 68:689–94. doi: 10.1002/acr.22728
- Koga T, Fujikawa K, Horai Y, Okada A, Kawashiri SY, Iwamoto N, et al. The diagnostic utility of anti-melanoma differentiation-associated gene 5 antibody testing for predicting the prognosis of Japanese patients with DM. *Rheumatol (Oxford)*. (2012) 51:1278–84. doi: 10.1093/rheumatology/ker518
- Lu X, Peng Q, Wang G. Anti-MDA5 antibody-positive dermatomyositis: pathogenesis and clinical progress. *Nat Rev Rheumatol*. (2024) 20:48–62. doi: 10.1038/s41584-023-01054-9
- Li W, Deng C, Yang H, Lu X, Li S, Liu X, et al. Expansion of circulating peripheral TIGIT+CD226+ CD4 T cells with enhanced effector functions in dermatomyositis. *Arthritis Res Ther*. (2021) 23:15. doi: 10.1186/s13075-020-02397-4
- Jin Q, Fu L, Yang H, Chen X, Lin S, Huang Z, et al. Peripheral lymphocyte count defines the clinical phenotypes and prognosis in patients with anti-MDA5-positive dermatomyositis. *J Intern Med*. (2023) 293:494–507. doi: 10.1111/joim.v293.4
- Ren FP, Chen Q, Yao SS, Feng L, Xue XY, Zhao WC, et al. Characteristics and prognostic implications of peripheral blood lymphocyte subsets in patients with anti-MDA5 antibody positive dermatomyositis-interstitial lung disease. *BMC Pulm Med*. (2023) 23:411. doi: 10.1186/s12890-023-02706-y
- Xu YT, Cao ZY, Lin S, Shu XM, Lu X, Wang GC, et al. Expansion of exhausted CD8+ T cells associates with increased pulmonary fungal infection risk in anti-melanoma differentiation associated gene 5 dermatomyositis. *Clin Exp Rheumatol*. (2024) 42:237–45. doi: 10.55563/clinexp/rheumatol/e51d3m

29. Zhang L, Xia Q, Li W, Peng Q, Yang H, Lu X, et al. The RIG-I pathway is involved in peripheral T cell lymphopenia in patients with dermatomyositis. *Arthritis Res Ther.* (2019) 21:131. doi: 10.1186/s13075-019-1905-z
30. Gelman L, Deterre P, Gouy H, Boumsell L, Debre P, Bismuth G. The lymphocyte surface antigen CD38 acts as a nicotinamide adenine dinucleotide glycohydrolase in human T lymphocytes. *Eur J Immunol.* (1993) 23:3361–4. doi: 10.1002/eji.1830231245
31. Ferrero E, Malavasi F. Human CD38, a leukocyte receptor and ectoenzyme, is a member of a novel eukaryotic gene family of nicotinamide adenine dinucleotide + -converting enzymes: extensive structural homology with the genes for murine bone marrow stromal cell antigen 1 and aplysian ADP-ribosyl cyclase. *J Immunol.* (1997) 159:3858–65. doi: 10.4049/jimmunol.159.8.3858
32. Krejci J, Casneuf T, Nijhof IS, Verbist B, Bald J, Plesner T, et al. Daratumumab depletes CD38+ immune regulatory cells, promotes T-cell expansion, and skews T-cell repertoire in multiple myeloma. *Blood.* (2016) 128:384–94. doi: 10.1182/blood-2015-12-687749
33. Kar A, Mehrotra S, Chatterjee S. CD38: T cell immuno-metabolic modulator. *Cells.* (2020) 9:1716. doi: 10.3390/cells9071716
34. Li W, Liang L, Liao Q, Li Y, Zhou Y. CD38: An important regulator of T cell function. *BioMed Pharmacother.* (2022) 153:113395. doi: 10.1016/j.biopha.2022.113395
35. Savarino A, Bottarel F, Calosso L, Feito MJ, Bensi T, Bragardo M, et al. Effects of the human CD38 glycoprotein on the early stages of the HIV-1 replication cycle. *FASEB J.* (1999) 13:2265–76. doi: 10.1096/fasebj.13.15.2265
36. Benito JM, Lopez M, Lozano S, Ballesteros C, Martinez P, Gonzalez-Lahoz J, et al. Differential upregulation of CD38 on different T-cell subsets may influence the ability to reconstitute CD4+ T cells under successful highly active antiretroviral therapy. *J Acquir Immune Defic Syndr.* (2005) 38:373–81. doi: 10.1097/01.qai.0000153105.42455.c2
37. R N, Sen P, Griger Z, Day J, Joshi M, Nune A, et al. Flares in IIMs and the timeline following COVID-19 vaccination: a combined analysis of the COVAD-1 and -2 surveys. *Rheumatol (Oxford).* (2024) 63:127–39. doi: 10.1093/rheumatology/kead180
38. Ali SS, R N, Sen P, Day J, Joshi M, Nune A, et al. Flares after COVID-19 infection in patients with idiopathic inflammatory myopathies: results from the COVAD study. *Rheumatol (Oxford).* (2023) 62:e263–e68. doi: 10.1136/annrheumdis-2023-eular.5801
39. Gonzalez D, Gupta L, Murthy V, Gonzalez EB, Williamson KA, Makol A, et al. Anti-MDA5 dermatomyositis after COVID-19 vaccination: a case-based review. *Rheumatol Int.* (2022) 42:1629–41. doi: 10.1007/s00296-022-05149-6
40. Qian J, Xu H. COVID-19 disease and dermatomyositis: A mini-review. *Front Immunol.* (2021) 12:747116. doi: 10.3389/fimmu.2021.747116
41. Higgs BW, Liu Z, White B, Zhu W, White WI, Morehouse C, et al. Patients with systemic lupus erythematosus, myositis, rheumatoid arthritis and scleroderma share activation of a common type I interferon pathway. *Ann Rheum Dis.* (2011) 70:2029–36. doi: 10.1136/ard.2011.150326
42. Walsh RJ, Kong SW, Yao Y, Jallal B, Kiener PA, Pinkus JL, et al. Type I interferon-inducible gene expression in blood is present and reflects disease activity in dermatomyositis and polymyositis. *Arthritis Rheumatol.* (2007) 56:3784–92. doi: 10.1002/art.v56:11
43. Ono N, Kai K, Maruyama A, Sakai M, Sadanaga Y, Koarada S, et al. The relationship between type I IFN and vasculopathy in anti-MDA5 antibody-positive dermatomyositis patients. *Rheumatol (Oxford).* (2019) 58:786–91. doi: 10.1093/rheumatology/keay386
44. Pinal-Fernandez I, Casal-Dominguez M, Derfoul A, Pak K, Plotz P, Miller FW, et al. Identification of distinctive interferon gene signatures in different types of myositis. *Neurology.* (2019) 93:e1193–e204. doi: 10.1212/WNL.00000000000008128
45. Wang Y, Jia H, Li W, Liu H, Tu M, Li J, et al. Transcriptomic profiling and longitudinal study reveal the relationship of anti-MDA5 titer and type I IFN signature in MDA5+ dermatomyositis. *Front Immunol.* (2023) 14:1249844. doi: 10.3389/fimmu.2023.1249844
46. Holzer MT, Nies JF, Oqueka T, Huber TB, Kotter I, Krusche M. Successful rescue therapy with daratumumab in rapidly progressive interstitial lung disease caused by MDA5-positive dermatomyositis. *Chest.* (2023) 163:e1–5. doi: 10.1016/j.chest.2022.08.2209
47. Ostendorf L, Muench F, Thormahlen L, Galbavy Z, Korner R, Nee J, et al. Rescue combination treatment of anti-MDA5-associated ARDS with daratumumab. *RMD Open.* (2023) 9:e003238. doi: 10.1136/rmdopen-2023-003238
48. Chua CG, Chai GT, Lim XR, Manghani M, Leung BPL, Koh LW. Successful rescue treatment of refractory anti-MDA5 autoantibody positive dermatomyositis with rapidly progressive interstitial lung disease using daratumumab. *Clin Exp Rheumatol.* (2024) 42:460–61. doi: 10.55563/clinexprheumatol/monpb6
49. Lian X, Zou J, Guo Q, Chen S, Lu L, Wang R, et al. Mortality risk prediction in amyopathic dermatomyositis associated with interstitial lung disease: the FLAIR model. *Chest.* (2020) 158:1535–45. doi: 10.1016/j.chest.2020.04.057
50. So J, So H, Wong VT, Ho R, Wu TY, Wong PC, et al. Predictors of rapidly progressive interstitial lung disease and mortality in patients with autoantibodies against melanoma differentiation-associated protein 5 dermatomyositis. *Rheumatol (Oxford).* (2022) 61:4437–44. doi: 10.1093/rheumatology/keac094
51. Wu W, Xu W, Sun W, Zhang D, Zhao J, Luo Q, et al. Forced vital capacity predicts the survival of interstitial lung disease in anti-MDA5 positive dermatomyositis: a multi-centre cohort study. *Rheumatol (Oxford).* (2021) 61:230–39. doi: 10.1093/rheumatology/keab305