



Key Components of the Complement Lectin Pathway Are Not Only Required for the Development of Inflammatory Arthritis but Also Regulate the Transcription of Factor D

V. Michael Holers¹, Anna Borodovsky², Robert I. Scheinman³, Nhu Ho¹, Joseline Ramos Ramirez¹, József Dobó⁴, Péter Gál⁴, Jared Lindenberger⁵, Annette G. Hansen⁶, Dhruv Desai², Rasmus Pihl⁶, Steffen Thiel⁶ and Nirmal K. Banda^{1*}

OPEN ACCESS

Edited by:

Peter F. Zipfel,
Leibniz Institute for Natural Product
Research and Infection
Biology, Germany

Reviewed by:

Kenneth Reid,
University of Oxford, United Kingdom
Michael Kirschfink,
Heidelberg University, Germany

*Correspondence:

Nirmal K. Banda
Nirmal.Banda@cuanschutz.edu

Specialty section:

This article was submitted to
Molecular Innate Immunity,
a section of the journal
Frontiers in Immunology

Received: 11 November 2019

Accepted: 27 January 2020

Published: 21 February 2020

Citation:

Holers VM, Borodovsky A, Scheinman RI, Ho N, Ramirez JR, Dobó J, Gál P, Lindenberger J, Hansen AG, Desai D, Pihl R, Thiel S and Banda NK (2020) Key Components of the Complement Lectin Pathway Are Not Only Required for the Development of Inflammatory Arthritis but Also Regulate the Transcription of Factor D. *Front. Immunol.* 11:201. doi: 10.3389/fimmu.2020.00201

¹ Division of Rheumatology, Department of Medicine, University of Colorado Anschutz Medical Campus, Aurora, CO, United States, ² Alnylam Pharmaceutical Inc., Boston, MA, United States, ³ Skaggs School of Pharmacy, University of Colorado Anschutz Medical Campus, Aurora, CO, United States, ⁴ Research Centre for Natural Sciences, Institute of Enzymology, Budapest, Hungary, ⁵ Department of Biochemistry and Molecular Genetics, University of Colorado Denver Anschutz Medical Campus, Aurora, CO, United States, ⁶ Department of Biomedicine, University of Aarhus, Aarhus, Denmark

The complement system plays an important role in the pathogenesis of rheumatoid arthritis (RA). Besides driving lectin pathway (LP) activation, the mannan-binding lectin (MBL)-associated serine proteases (MASPs) also play a key role in regulating the alternative pathway (AP). We evaluated the effects of N-acetylgalactosamine (GalNAc)-conjugated MASP-1 and MASP-2 duplexes *in vitro* and in mice with and without arthritis to examine whether knockdown of MASP-1 and MASP-2 expression affects the development of arthritis. GalNAc-siRNAs for MASP-1 and MASP-2 demonstrated robust silencing of MASP-1 or MASP-2 at pM concentrations *in vitro*. To evaluate the impact of silencing in arthritic mice, we used the collagen antibody-induced arthritis (CAIA) mouse model of RA. Mice were injected a 10 mg/kg dose of GalNAc-siRNAs 3x s.q. prior to the induction of CAIA. Liver gene expression was examined using qRT-PCR, and protein levels were confirmed in the circulation by sandwich immunoassays and Western blot. At day 10, CAIA mice separately treated with MASP-1 and MASP-2 duplexes had a specific reduction in expression of liver MASP-1 (70–95%, $p < 0.05$) and MASP-2 (90%, $p < 0.05$) mRNA, respectively. MASP-1-siRNA treatment resulted in a 95% reduction in levels of MASP-1 protein in circulation with no effect on MASP-2 levels and clinical disease activity (CDA). In mice injected with MASP-2 duplex, there was a significant ($p < 0.05$) 90% decrease in *ex vivo* C4b deposition on mannan, with nearly complete elimination of MASP-2 in the circulation. MASP-2 silencing initially significantly decreased CDA by 60% but subsequently changed to a 40% decrease vs. control. Unexpectedly, GalNAc-siRNA-mediated knockdown of MASP-1 and MASP-2 revealed a marked effect of these proteins on the transcription of FD under normal physiological conditions, whereas LPS-induced

inflammatory conditions reversed this effect on FD levels. LPS is recognized by Toll-like receptor 4 (TLR4), we found MBL not only binds to TLR4 an interaction with a K_D of 907 nM but also upregulated FD expression in differentiated adipocytes. We show that MASP-2 knockdown impairs the development of RA and that the interrelationship between proteins of the LP and the AP may extend to the transcriptional modulation of the FD gene.

Keywords: liver, gene silencing, complement, arthritis, MBL-associated serine proteases, Factor D

INTRODUCTION

Rheumatoid Arthritis (RA) is a chronic inflammatory autoimmune disease of the joints, affecting ~0.24% of the entire world population (1). The mortality rate for patients with RA is higher than the general population (2), and the substantial morbidity of this condition impacts the public health care system substantially (3). Although new therapeutics have improved outcomes and quality of life, and more patients will gain access to new biosimilars, ~40% patients only respond partially or not at all to the best of current therapies (4). Furthermore, disease-modifying anti-rheumatic drugs (DMARDs) ameliorate the disease but also lead to an increased risk of infections due to immune suppression (5). Despite clinical improvement afforded by these therapeutics, the radiological damage in RA can continue over time due to an underlying inflammatory process (6) and treatment with anti-TNF antagonists, despite clinical improvement, has little effect on diagnostic and pathologically relevant markers like anti-citrullinated protein antibodies (ACPAs) (7, 8).

Citrullinated peptides are considered a prime example of an autoantigen in RA, and the presence of ACPAs is significantly correlated with radiological damage (6). Autoantibodies which develop against these epitopes, also designated anti-cyclic citrullinated peptide (CCP) antibodies, can circulate to deposit in damaged joint tissues, which are rich in citrullinated proteins. However, the development of ACPA alone is not sufficient to trigger RA. For example, it has been shown recently that transgenic (Tg) mice expressing IgM with the V region of an anti-CCP mAb cloned from a RA patient, thus from a naturally generated anti-CCP Ab, failed to develop arthritis (9), a finding consistent with the hypothesis that anti-CCP Abs alone are not the cause of disease. Rather, a “second hit” has been postulated to be required for localization of this immune

response to the joint (10–12). The nature of this “second hit” may be quite variable; involving infection or injury and could be provided by innate immune components, including those of the complement system.

We and others have extensively probed the role of the complement protein network in RA pathogenesis to identify targets within the pathway that are suitable for therapeutic development (11, 13–18). Inhibition of complement in virtually every RA mouse model tested leads to decreased disease progression (12). The evidence for complement’s role in RA is also evident when examining human patients. Examination of synovial fluid from RA patients shows the presence of complement fragments, indicative of complement activation (19). Blood levels of certain complement activation fragments are also increased in these patients, while levels of full length complement proteins may be decreased (20–22). Clinical trials with complement C5-directed therapeutics such as PMX53 and Eculizumab have so far been unsuccessful in the treatment of RA (18). However, these unsuccessful trials likely reflect the complexity of the complement system and requirement to also block upstream at C3 activation, or the relatively late timing of intervention in the disease course, rather than the lack of a role for complement in RA pathogenesis.

The complement system is a liver-produced but serum-effector killing system of the innate immune system. It has now been recognized to play an important and vital role in many autoimmune diseases. It exists and functions in each and every tissue of the body including in the synovium of joints. The system facilitates clearance of circulating immune complexes, damaged tissues, apoptotic cells, apoptotic bodies and dead cells (23, 24), thus possessing strong anti-inflammatory properties for the benefit of the host, e.g., in the absence of a mature adaptive immune response. Overall, complement is composed of many soluble proteins and receptors and is generated in abundance by the liver (25). Other cells or tissues, however, can secrete complement proteins, including epithelial and endothelial cells as well as adipocytes (26, 27). The complement system is activated by three pathways, i.e., classical pathway (CP), lectin Pathway (LP) and alternative pathway (AP) (28). All three pathways of the complement system are activated by different molecules but converge at the cleavage of C3 and C5, generating C3a, C3b, C5a, and C5b, via C3 and C5 convertases, respectively. C3a and C5a function as activators of inflammatory cells via the C3a and C5a receptors (C5aR) while C5b promotes the assembly of the membrane attack complex (MAC, C5b–C9).

Abbreviations: CDA, clinical disease activity; AP, alternative pathway; anti-CCP, anti-cyclic citrullinated peptide; ACPA, anti-citrullinated protein antibodies; CAIA, collagen antibody-induced arthritis; CP, classical pathway; LP, lectin pathway; MBL, Mannan-binding lectin; WT, wild type; GalNAc, N-acetylgalactosamine; ASGPR, Asialoglycoprotein Receptor; rHuC4, recombinant human complement protein 4; proFD, profactor D; FD, factor D; MASP-1, mannan-binding lectin-associated serine protease-1; MASP-2, mannan-binding lectin-associated serine protease-2; MASP-3, mannan-binding lectin-associated serine protease-3; MAP19, Mannan-binding lectin-associated protein of 19 kDa; MAP44, Mannan-binding lectin-associated protein of 44 kDa [a.k.a MBL/ficolin/CL-11-associated protein-1, (MAP-1)]; siRNA, small interfering ribonucleic acid; Luc, Luciferase; mAb, monoclonal antibody; TLR4, Toll-like Receptor 4; LPS, Lipopolysacchride.

The CP consists of C1q, C1r, C1s, as well as C4 and C2, and the LP consists of pattern recognition molecules (PRMs), including mannan binding lectin (MBL), ficolins (FCNs) and Collectins (CLKs), and the effector proteases, MBL-associated serine proteases (MASPs) MASP-1, -2, and -3. Binding of LP PRMs to carbohydrates on the surface of microorganisms leads to MASP-1 autoactivation, MASP-1-mediated activation of MASP-2, and cleavage of C4 and C2 (29). The CP can't activate C3 and subsequently the AP amplification loop without C4 (30, 31). However, the LP can activate C3 and the AP through bypass routes without the direct involvement C4 or C2 (32). This is only possible through the direct activation of C3 by LP proteases (33).

The *MASP-1* gene encodes three variants via alternative splicing; two variants are MASP-1 and MASP-3 with different serine protease domains, and the third variant is MAP44 (a.k.a. MAP-1), which lacks a serine protease domain (34, 35). Most of the MASP-1 is produced by the liver (36) and it has been shown to influence LP activity through direct activation of MASP-2 (37). The observation that MASP-1/3 cleaves profactor D (proFD) to mature factor D (FD) has created a paradigm shift regarding the direct role of LP proteases in also activating the AP of the complement system (38, 39). Mice lacking MASP-1/3 have no LP and have suboptimal AP activity (38, 39) and these mice are resistant to arthritis (40). Of note *MASP-1/3*^{-/-} mice are also lean (36) suggesting a link between adipose tissue and MASPs. Mice lacking MASP-1 have no LP but have intact AP while mice lacking MASP-3 have no AP but have intact LP (41). Initially it was shown that in patients with 3MC syndrome, with combined MASP-1 and MASP-3 deficiency, the AP was functional while the LP was totally non-functional (37). Later on it was confirmed both in mice and humans that it is MASP-3 and not MASP-1 which cleaves proFD (36, 42–45). These findings were partly confirmed in a 3MC patient lacking only MASP-3, as it was shown that the majority of FD was present as proFD. However, this study also highlighted that in humans minor levels of mature FD are still generated *in vivo* by a MASP-3-independent mechanism. MASP-1 is required for AP activation on certain surfaces, and it was reported that MASP-1 is essential for LPS-induced but not for zymosan-induced AP activation (46). Overall, it is now clear that MASP-3 is a major regulator of the AP. The clinical relevance of inhibition of MASP-3 has recently been highlighted, as targeted RNAi of MASP-3 in the liver of mice with MASP-3 duplex attenuated collagen antibody induced arthritis (CAIA), a mouse model dependent on the AP (36). This study also showed that rMASP-3 cleaved proFD into mature FD *in vivo* in *MASP-1/3*^{-/-} mice (36).

MBL-associated serine protease-2 (MASP-2) was first identified using liver cDNA library (47). Later, an alternative splice variant of MASP-2 was identified as MBL-associated plasma protein of 19 kDa (MAP19) [a.k.a. MAP-2 or small MAP (sMAP)] (48). sMAP was cloned and it has the signal peptide similar to MASP-2 but it has a unique C-terminal sequence and lacks the serine protease catalytic domain (49). MASP-2 can cleave C4 and C2 (50), while MASP-1 cannot cleave C4 but can cleave C2 (51). MASP-2 can also activate the AP through a C4/C2 bypass route that leads to MASP-2-dependent activation of C3 by an unknown mechanism (30, 52). Thus, in the complete

deficiencies of C4 or C2 this bypass pathway can still activate the AP as seen in guinea pigs lacking C4 (53) and lupus patients lacking C2 (54).

Overall, liver predominately generates MASP-1 and MASP-2 (55), and they can, therefore, be directly targeted by liver-directed RNA interference (RNAi) mechanisms, such as asialoglycoprotein receptors (ASGPR)-dependent uptake of N-acetylgalactosamine (GalNAc)-conjugated small interfering RNAs (siRNAs) (36). The ASGPR, is conserved between species expressed on all hepatocytes, and binds the tri-antennary GalNAc ligand with nanomolar affinity, resulting in internalization of the receptor and delivery of the GalNAc-conjugated siRNA into the hepatocyte (56, 57). Liver-directed targeting of MASP-3 by GalNAc-conjugated MASP-3-siRNA significantly attenuated arthritis by 50% in mice (36). Therefore, for this current study we used GalNAc-MASP-1-siRNA and GalNAc-MASP-2-siRNA duplexes targeting hepatocytes to examine their effect on arthritis.

Our first objective in this study was to generate and test if GalNAc-conjugated MASP-1 and MASP-2 duplexes silence MASP-1 and MASP-2. Our second objective was to target liver MASP-1 or MASP-2 by RNAi and to test their efficacy *in vivo* in mice with and without CAIA. Our third objective was to explore the mechanism(s) by which liver-directed silencing of MASP-1 and MASP-2 effected the LP and AP systemically. In those studies we found evidence that components of the LP also affect the AP by regulating the transcription of FD. Our hypothesis is that liver derived MASP-2 but not MASP-1 provides the “second hit” and it might be essential for the AP-dependent joint damage, and its targeted intra-hepatic inhibition can lead to the attenuation of arthritis by MBL-MASP-2-dependent regulation of FD, which is predominately generated by adipocytes.

MATERIALS AND METHODS

In vitro Selection of GalNAc-siRNA-MASP-1 and GalNAc-siRNA-MASP-2 Duplexes

siRNA sequences were designed based on the available bioinformatics information to target the MASP-1 splice variant of the mouse *MASP1* gene (22 siRNAs) or the *MASP2* gene (46 siRNAs). GalNAc-siRNA conjugates were synthesized using solid phase synthesis methods as previously described (36, 58).

psiCHECK2-Dual-Glo[®] Luciferase *in vitro* Assay for MASP-1 and MASP-2 Gene Silencing

The sequence of interest (MASP-1 or MASP-2) was cloned into the multiple cloning region (XhoI-NotI sites) located downstream of the Renilla STOP codon in the 3'UTR. The psiCHECK2-Dual-Glo system enables detection of siRNA-mediated silencing of target sequences fused to a *Renilla* luciferase reporter gene. RNAi-mediated cleavage and degradation of the fusion mRNA can be measured by a loss in *Renilla* signal following siRNA treatment. The psiCHECK2 vector also contains a second reporter gene, Firefly luciferase,

which is driven by a different promoter and allows for normalization of *Renilla* expression. An African Green monkey Cos-7 cell line was used *in vitro* to examine the effect of MASP-1 and MASP-2 siRNA duplexes on the expression of MASP-1 and MASP-2 in the psiCHECK2 system. All transfections were repeated for a total of three times. Inhibitory Concentration (IC₅₀) of each MASP-1 or MASP-2 duplexes were calculated from the expression curve and is included on the plots.

Selection of the Active GalNAc-MASP-1 and GalNAc-MASP-2 siRNA Duplexes *in vivo*

The effect of MASP-1 and MASP-2 duplexes on MASP1 and MASP2 expression was initially characterized in 8 weeks old C57BL/6J mice (Charles River Laboratories). Single doses of 10 mg/kg of MASP-1 and of MASP-2 duplexes were administered via a subcutaneous injection. Livers were harvested on Day 7 post s.q. injection. mRNA was isolated using RNeasy 96 Universal tissue kit (Qiagen). High-Capacity cDNA Reverse Transcription Kit (Applied Biosystems) was used to convert the mRNA samples into cDNA. Levels of MASP-1 and MASP-2 expression were analyzed using qRT-PCR reagents compatible with Roche Lightcycler 480 based on previously published studies (36). The MASP-1 and MASP-2 mRNAs were measured using a customized TaqMan assay (ThermoFisher) and normalized to the endogenous GAPDH expression (ThermoFisher).

Effect of GalNAc-MASP-1 and GalNAc-MASP-2 Duplexes on Induction of Collagen Antibody-Induced Arthritis in Mice

WT mice were injected s.q. with 10 mg/kg on days -10, -5, and on day 0 either with GalNAc-Luciferase-siRNA ($n = 10$) or GalNAc-MASP-1 ($n = 10$) or with GalNAc-MASP-2-siRNA ($n = 10$). Then CAIA was induced in these WT mice by using a mixture of 5 mAb to bovine collagen type II (CII) (ArthroGen-CIA, Chondrex) according to published studies (59–61). All WT mice received i.p., injections of 8 mg of ArthroGen on day 0 and 50 μ g of LPS from *E. coli* strain 0111B4 on day 3. All mice were sacrificed at day 10 post anti-collagen antibodies injection. The total duration of the CAIA experiment was day 20 post the first siRNA injection. The clinical disease activity (CDA) in all groups of WT mice was determined every day by two trained laboratory personnel acting independently and blinded as to treatment according to our previously published methods (36, 40, 61, 62).

qRT PCR to Measure Liver Expressed MASPs in Mice With and Without Disease

Mouse liver from first cohort of WT mice ($n = 30$) injected (s.q.) with GalNAc-Luciferase ($n = 10$), GalNAc-MASP-1 ($n = 10$) and GalNAc-MASP-2 ($n = 10$) siRNAs with disease, sacrificed at day 20, were homogenized using a bullet blender (36). The expression of MASP-1 and MASP-2 were measured from the liver by qRT-PCR in a blinded fashion. Similarly, in a second cohort, liver from WT mice ($n = 34$) treated with GalNAc-conjugated Luciferase siRNA ($n = 8$) or with MASP-1 siRNA ($n = 8$) or with

MASP-2 siRNA ($n = 9$) or with MASP-1 plus MASP-2 siRNAs ($n = 9$) without disease were processed for RNA extraction. In this study, out of 34 mice, LPS (50 μ g/mouse/i.p.) was injected, at day 10, in mice treated with GalNAc-conjugated Luciferase siRNA ($n = 4$) or with MASP-1 siRNA ($n = 4$) or with MASP-2 siRNA ($n = 5$) or with MASP-1 plus MASP-2 siRNAs ($n = 5$) and these mice were sacrificed at day 14. The remaining 16 mice, i.e., 4 mice per treatment group, were not injected with LPS and sacrificed at day 25. Total RNA from the liver was isolated from the liver homogenates using RNeasy Mini kit (Qiagen Inc., Germantown, MD). 18S ribosomal RNA (18S rRNA) was used as an internal control in each experiment and all data were expressed in pg/ng mRNA/18S RNA. All mRNA samples were analyzed in duplicate. All sample were analyzed by amplifying at 40 cycles according to the methods published previously in Nature Protocols (14, 63). All qRT-PCR data were analyzed by using cDNA based on the standard curve made by using liver RNA from a normal WT mice.

Time-Resolved Immunofluorometric Assay to Measure MASP-1 Protein

The absolute levels of MASP-1 protein were measured by using Time-resolved immunofluorometric assay (TRIFMA), a sandwich-type immunoassay using europium-labeled detecting agents as described (64). In this method, the concentrations of MASP-1 protein in the sera from WT mice injected with GalNAc-Luciferase-siRNA or GalNAc-MASP-1-siRNA or GalNAc-MASP-2-siRNA were determined by using microtiter wells coated with monoclonal anti-mouse MASP-1 antibody, followed by incubation with samples and detection using biotinylated anti-MASP-1 antibody and subsequently by adding Eu³⁺-conjugated streptavidin and reading of signal by time-resolved fluorimetry (Perkin Elmer, Hvidovre, Denmark) (64).

C4b Deposition on Mannan Particles Using Mouse Serum

To assess the functionality of the LP, a 96-well ELISA Costar plates was pre-coated with 9 μ g/ml of mannan diluted in 0.05 M Sodium carbonate buffer, pH 9.5 for overnight at 4°C. The ELISA plates were flipped gently with no wash followed by blocking with 1% BSA 1xPBS (with Ca²⁺ Mg²⁺) for 1 h at room temperature. After washing 3x with 1xPBS 0.05% Tween 20, 100 μ l of 10% serum diluted in MBL binding buffer [20 mM Tris, 1 M NaCl, 0.05% (v/v) Triton X-100, 10 mM CaCl₂, 15 mM NaN₃, 1 mg/ml HSA, pH 7.4] was added to each well in duplicate, and the ELISA plates were left at 4°C overnight. Serum was subsequently removed by washing, and recombinant human C4 (rHuC4) protein (Complement Technology Inc., Tyler, Texas) diluted in sodium barbital buffer was added to the wells. One percent sera from WT and *MASP-2*^{-/-} mice were used as a positive and negative controls, respectively. No target control contained no rHuC4. ELISA plates were incubated for 1.5 h at 37°C followed by 3x washings with 1xPBS 0.05% T20 (with Ca²⁺ Mg²⁺). After 1 h anti-C4C biotinylated antibody (1 μ g/ml) diluted in 1xPBS 0.05% T20 (with Ca²⁺ Mg²⁺) and incubated at room temperature for 2 h. One hundred microliter of Streptavidin (dilution 1:1,000) was added to each well after washing three times (with Ca²⁺ Mg²⁺). The ELISA plates were developed using 100 μ l of

1:1 diluted Super Signal™ West Pico Plus Chemiluminescent Substrate (Thermo Scientific, Rockford, IL). The reaction was stopped using 50 μ l with 2N H₂SO₄ and absorbance read at 450 nm, correcting for background at 550 nm.

Western Blot Analysis for MASP-2

To detect the presence or absence of MASP-2 protein, before, during and after MASP-2 silencing, by Western blot analysis, a total of 40 μ L of D-Mannose-Agarose beads (resin) (Sigma) were equilibrated in wash buffer containing TBS, 5 mM CaCl₂ + 1 mM Pefabloc SC (Sigma, 76307). Ten μ L of serum was mixed with 20 μ L of wash buffer, added to the resin, and incubated for 1.5 h. The beads were washed three times, re-suspended in 50 μ L of wash buffer, and transferred to Pierce Microspin column (Thermo Scientific). The spin columns were centrifuged for 2 min at 4,000 \times g, until the resin become dry. Elution of MBL-MASP-2 complexes was performed by adding 30 μ L of electrophoresis sample buffer to each tube [7.5 μ L of NuPAGE LDS sample buffer (Life technologies, NP0007) + 3 μ L NuPAGE reducing agent (Life technologies, NP0009) + 19.5 μ L of ddH₂O] and centrifuging the resin until it is dry. Then 30 μ L of the eluate was heated at 80°C for 5 min and loaded on the 10% SDS gel using 1xMOPS (Invitrogen) and 1xNupage (Invitrogen) running buffer. Proteins were transferred to a PVDF membrane using 1xNupage tran (Invitrogen) transfer buffer, and the membrane was blocked in PBS + 5% milk for 2 h. The blot was incubated with a primary antibody, biotinylated monoclonal Rat anti-human MASP-2/MAP19 (1 μ g/ml) (6G12, cross reacting with mouse MASP-2) in PBS + 5% milk and then incubated at 4°C overnight (65). HRP-conjugated Streptavidin (diluted 1:1,000) was used as a secondary antibody. Finally, the blot was developed by incubating with 12 mL of SuperSignal West Pico PLUS Chemiluminescent Substrate (ThermoFisher) for 10 min. The blot was scanned using Genegnome XRQ Chemiluminescence Imaging System and Gene Tool analysis software from Syngene (Frederick, MD), and the density of each band was quantified using the Quantity One® software (Bio-Rad, Hercules, CA).

Measurement of Expression of AP Complement Components in Liver After Silencing of MASPs and LPS Treatment

We measured, by qRT PCR, the expression of complement C3, factor B (FB), factor D (FD), Properdin, C5, MASP-1, MASP-2, and MASP-3 from the liver of mice treated with GalNAc-Luciferase siRNA, GalNAc-MASP-1 siRNA, GalNAc-MASP-2 siRNA, and GalNAc-MASP-1 plus MASP-2 siRNAs. The expression of the above-mentioned complement components were measured according to our published methods (14, 36).

Western Blots for FD Protein

To determine the increase or decrease in FD protein in the circulation of WT mice, with and without LPS, after silencing with GalNAc-MASP-1/MASP-2 duplexes simultaneously, Western blots for FD were performed according to our published methods (36, 40).

Determination of the Binding Affinity Between TLR4 and MBL Using Microscale Thermophoresis

Recombinant Human TLR4 (R&D Systems) was re-suspended in a buffer containing 20 mM Tris-HCl pH 7.5, 150 mM NaCl, 5 mM CaCl₂, and 1 mM BME. TLR4 was fluorescently labeled using the NanoTemper Monolith His-Tag Labeling Kit RED-tris-NTA 2nd Generation kit (MO-L018) per the manufacturer's protocol. TLR4 was titrated with recombinant MBL (clinical grade) with concentrations varying from 20.8 μ M to 635 μ M, while keeping the labeled TLR4 at 5 nM. Samples were loaded into standard capillaries, and Microscale thermophoresis (MST) experiments were carried out using a Monolith NT.115 pico (NanoTemper Technologies GmbH, Munich, Germany). The thermophoresis was monitored at 20% LED power and high MST power. Data were analyzed and fit to the Kd model using MO. Affinity software (version 2.3) (NanoTemp Technologies, CA) in duplicate.

Determine Expression of TLR4 and FD in 3T3 Cell Line and Adipocytes

To detect TLR4 on the cell surface of cells by flow cytometry, PE-conjugated mouse anti-TLR4 antibody (CD284) (Biolegend) was used along with matched isotype control, rat IgG2a k PE-conjugated (BioLegend). Primary adipocytes derived from adipose tissue of C57BL6 mice were also examined by flow cytometry. The Mouse 3T3 L1 embryonic cell line was used to examine the expression of TLR4 receptors and FD by qRT PCR as mentioned above. 3T3L1 cells were cultured based on our previously published study (66). 3T3L1 cell line was used as analogous to adipocytes as these cells differentiate into adipocyte-like morphology under certain conditions (66). Differentiated 3T3L1 cells were also stimulated with various doses of LPS (*E. coli*) (1.25 or 2.50 or 5 μ g/ml) or with recombinant human MBL (10 or 20 μ g/ml) for 48 h to determine their effect on the expression of FD and TLR4.

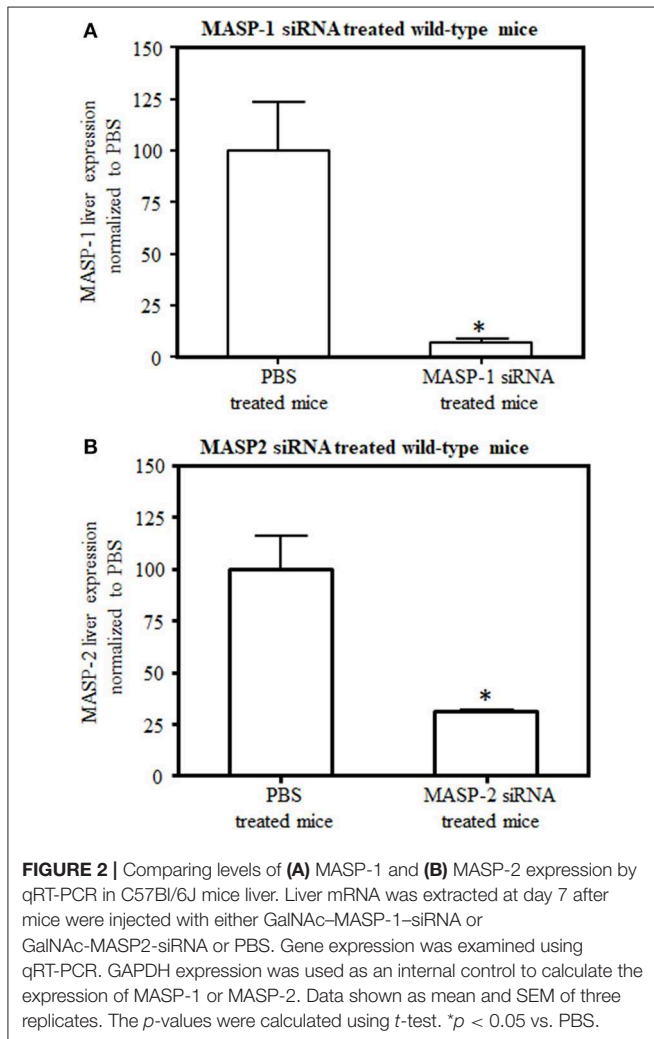
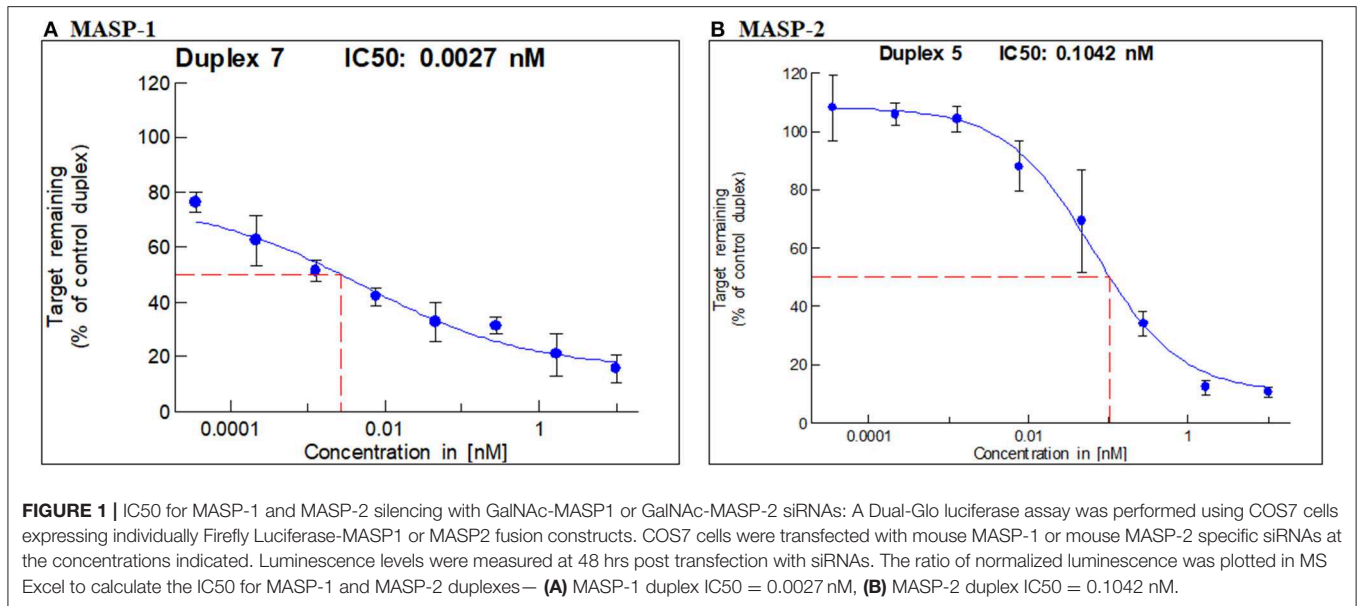
Statistics

Some of the TRIFMA data were analyzed by using the Excel program. Analysis of variance (ANOVA) was used to comparing more than two independent groups. Two-tailed Student's *t*-test was used to find out the differences between two means. DATA were expressed as standard error of the mean (SEM). The level of significance was defined as *p* < 0.05.

RESULTS

IC50 of GalNAc-MASP-1 and MASP-2-siRNA Duplexes

In vitro screening led to the selection of one duplex each of GalNAc-MASP-1 (IC₅₀ = 0.0027 nM) and MASP-2 (IC₅₀ = 0.1042 nM) (Figures 1A,B) siRNA. GalNAc-MASP-1-siRNA or GalNAc-MASP-2-siRNA were both 23 bp duplexes. The duplex of GalNAc-MASP-2-siRNA have no off-target effect on MASP-1, and vice versa, as shown below (Figure 4).

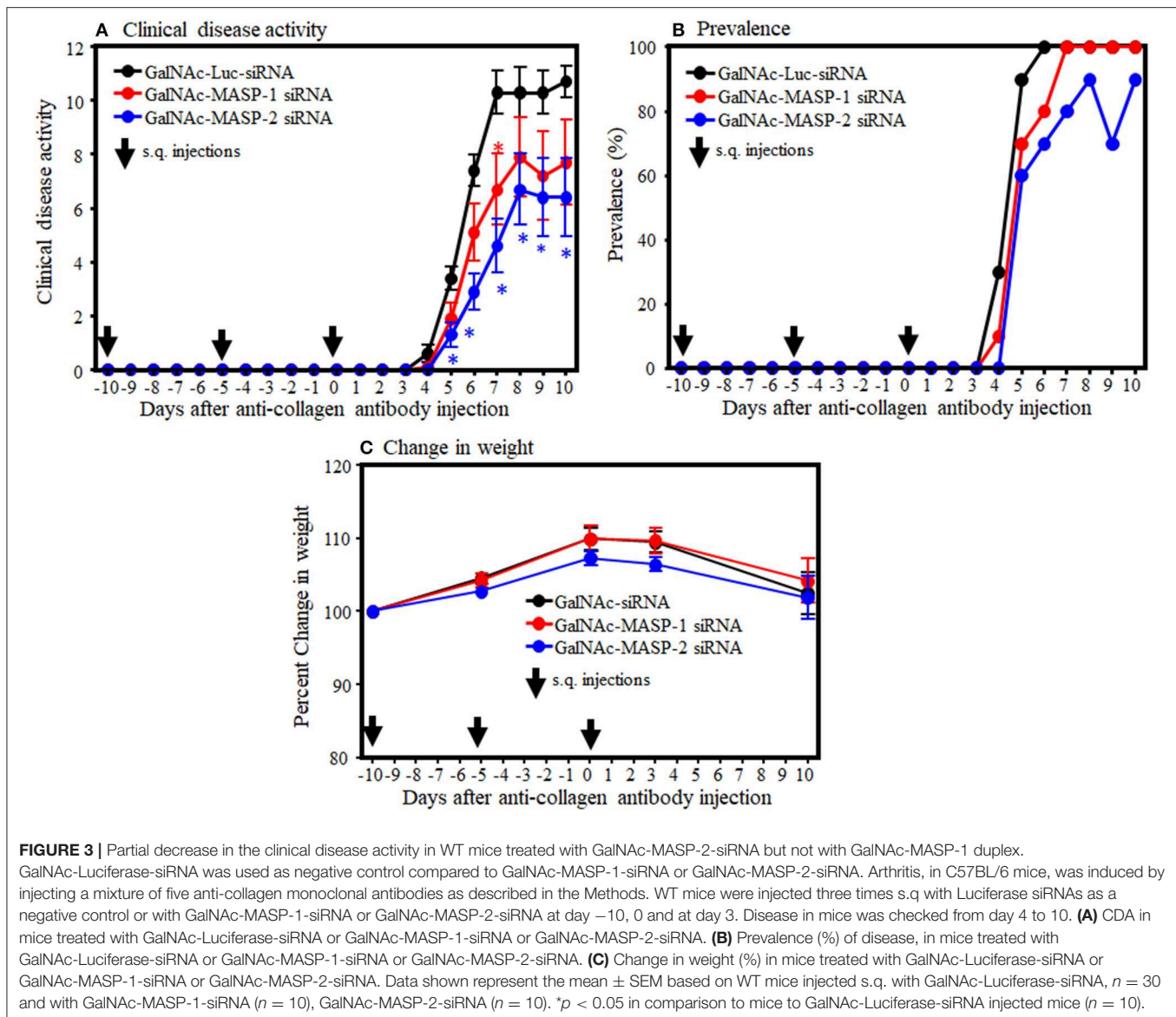


GalNAc-MASP-1 and MASP-2 Duplexes Silenced MASP-1 and MASP-2 Expression in the Liver of Mice Without Disease

To determine the *in vivo* efficacy of GalNAc-MASP-1-siRNA and GalNAc-MASP-2-siRNA duplexes on the expression of MASP-1 and MASP-2, healthy C57Bl/6 mice were used (Figure 2). In this experiment, mice were injected with a single dose (10 mg/kg) of either PBS or GalNAc-MASP-1-siRNA or GalNAc-MASP-2-siRNA duplexes on day 0 and sacrificed at day 7. A robust silencing in the siRNA-treated groups was observed, i.e., 93% of MASP-1 (Figure 2A) and 69% of MASP-2 (Figure 2B) expression was silenced after a single subcutaneous administration. Initially 58% decrease in MASP-3 expression was also noticed with silencing of MASP-1 but none with MASP-2 silencing.

GalNAc-MASP-2-siRNA Partially Attenuated Clinical Disease in Mice With CAIA

To examine the systemic effect of GalNAc-MASP-1-siRNA and GalNAc-MASP-2-siRNA on arthritis, mice were injected (s.q.) three times with GalNAc-Luciferase, GalNAc-MASP-1-siRNA, or GalNAc-MASP-2 siRNA before the induction of disease. All mice injected with anti-CII mAb and LPS developed disease after day 3. At day 10, the CDA in mice injected with GalNAc-Luciferase, GalNAc-MASP-1, or GalNAc-MASP-2 duplexes were 10.7 ± 0.597 , 7.7 ± 1.57 , and 6.4 ± 1.44 , respectively (Figure 3A). In mice treated with GalNAc-MASP-1-siRNA, there was a significant 35% decrease ($p < 0.030$) in the CDA at day 7, whereas there was no difference at day 10 (Figure 3A). However, in mice treated with GalNAc-MASP-2 siRNA there was from day 5 to 10 a consistent decrease in the CDA. At day 10, there was a significant

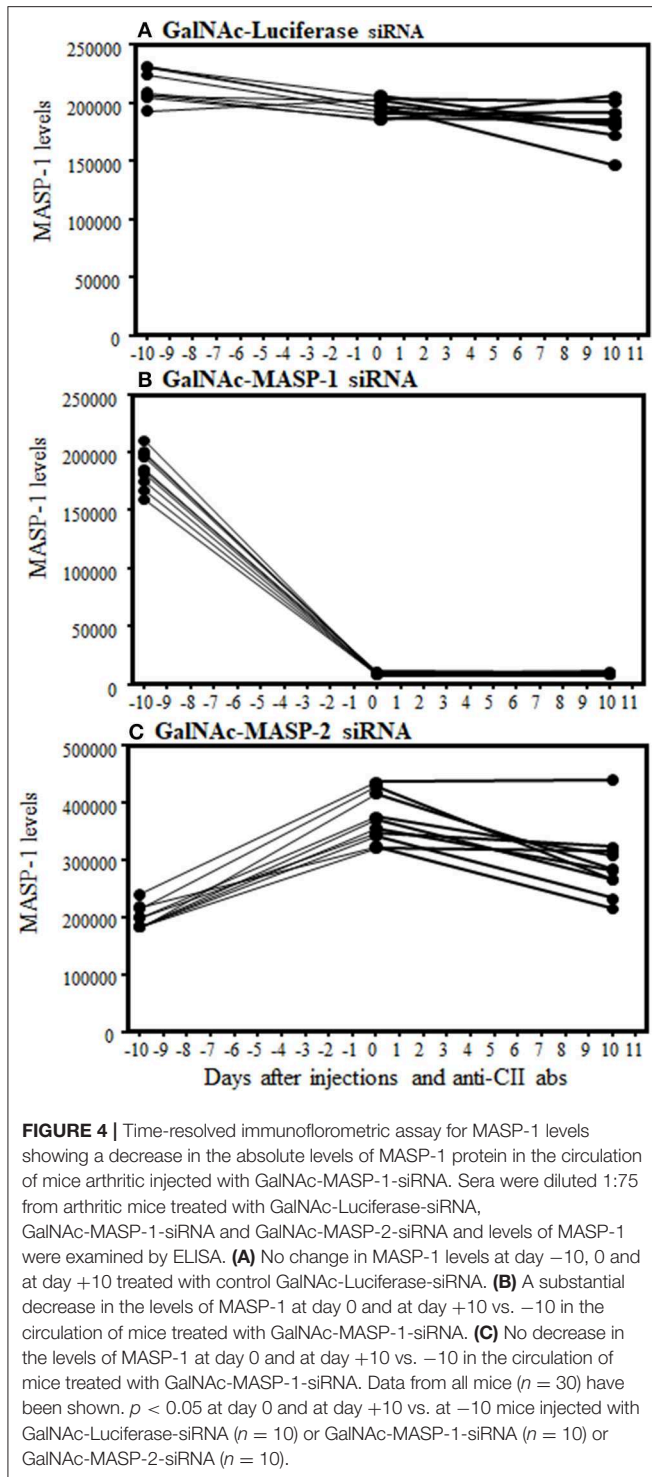


($p < 0.013$) 40% decrease in the CDA of mice treated with GalNac-MASP-2-siRNA compared with GalNac-luciferase, and at day 7 there was a significant ($p < 0.0003$) 60% decrease in the CDA in mice treated with GalNac-MASP-2 siRNA compared with the mice treated with GalNac-Luciferase-siRNA (Figure 3A).

The prevalence of disease at day 10 in WT mice injected with GalNac-Luciferase, GalNac-MASP-1 and GalNac-MASP-2 duplexes was 100, 100, and 90%, respectively (Figure 3B). There was no significant ($p < 0.68$) and ($p < 0.88$) effect on the weights of mice treated with GalNac-MASP-1 and GalNac-MASP-2 siRNA throughout the study (Figure 3C). No toxicity was seen, and no mouse died during the course of this experiment. Overall these data suggest that GalNac-MASP-2, but not GalNac-MASP-1 partially attenuated CAIA in mice.

Robust Downregulation of MASP-1 Protein by Liver-Specific RNAi Targeting With GalNac-MASP-1 Duplex in Mice With CAIA

A sandwich type immunoassay, i.e., a Time-resolved immunofluorometric assay (TRIFMA) to measure the absolute levels of MASP-1 was used in the sera from mice from the CAIA model (Figure 4). MASP-1 protein levels were measured at baseline (-day 10 relative to disease induction with anti-CII mAbs), after three injections of siRNA (day 0) and after the induction of disease (at day 10) (Figures 4A-C). The levels of MASP-1 were significantly ($p < 0.0001$) decreased by 95% in mice after three injections with GalNac-MASP-1 siRNA, relative to the mice injected with the GalNac-Luciferase siRNA, before the development of disease (day 0) and at the end of the study (day 10). (Figures 4A-C). In mice injected with control



GalNac-Luciferase-siRNA or GalNac-MASP-2-siRNA there was no effect on MASP-1 levels (Figures 4A,C). These data show that MASP-1 duplex specifically and significantly silenced MASP-1 levels systemically for a long time not only before the development of arthritis but even after the development of arthritis. Despite the robust suppression of MASP-1 level,

MASP-1 does not play a significant role in the pathogenesis of CAIA, because mice treated with GalNac-MASP-1-siRNA were not protected as compared to mice treated with control GalNac-Luciferase siRNA (Figure 3A).

Complete Elimination of MASP-2 Protein by Western Blot Analysis After Liver Targeted RNAi MASP-2 Silencing in Mice With CAIA

Western blot analysis for MASP-2 protein was done to examine the effect on MASP-2 on MASP-1 silencing by GalNac-MASP-2-siRNA on circulating protein levels (Figure 5). Sera from a subset of mice evaluated in the CAIA model were examined by western blot (Figure 5A). We found that there was no effect on MASP-2 levels in the sera from each mouse injected with GalNac-Luciferase-siRNA (Figure 5A, lanes 2, 3, 4) or GalNac-MASP-1-siRNA (Figure 5A, lanes 5, 6, 7). A distinct band of ~75 kDa of MASP-2 was present along with ~19kDa MAp19 (Figure 5A, lanes 2–8 and 11, lane 1, marker). These MASP-2 or MAp19 bands were present only in the sera from mice before treatment GalNac-MASP-2-siRNA (day -10; Figure 5A, lane 8) but completely absent or barely visible after treatment with GalNac-MASP-2-siRNA (day 0; Figure 5A, lane 9) and after disease development (day 10; Figure 5A, lane 10). Identical results were seen using serum from another mouse (Figure 5A, lanes 11, 12, 13). Sera from $FD^{-/-}$ and $MASP-2^{-/-}$ mice were used as positive and negative controls, respectively, to show the specificity of Western blot analysis for MASP-2 protein (Figure 5B, lanes 1, 2). MASP-2 protein is absent in serum from $MASP-2^{-/-}$ mouse (Figure 5B, lane 1) as expected but present in the serum from $FD^{-/-}$ mouse (Figure 5B, lane 2). These data show that liver targeting of MASP-2 by GalNac-MASP-2-siRNA was highly effective, and this effect lasted systemically for at least 10 days after the last siRNA dose. Our data once again confirmed that most of the MASP-2 in the circulation is generated by the liver and it can be inhibited below threshold detection levels even during acute inflammation (Figure 5).

Liver-Targeted RNAi With GalNac-MASP-2 Duplex Robustly Silences C4b Deposition by the LP

To examine the functionality of MASP-2 silencing in liver by GalNac-MASP-2-siRNA, C4b deposition via MBL pathway of the complement on mannancoated microtiter well surfaces was measured by ELISA. This procedure specifically excluded the activation from the CP due to the buffer composition, i.e., no C1q binding occurs to the surface. There is sufficient MASP-1 to activate MASP-2 in GalNac-MASP-1-siRNA treated mice. Sera from mice treated with a single dose of GalNac-Luciferase-siRNA, GalNac-MASP-1-siRNA, or GalNac-MASP-2-siRNA were added to ELISA plates pre-coated with mannan (Figures 6A–C). There was a complete and significant inhibition of C4b deposition both before and after the induction of disease ($p < 0.05$) in the sera from mice injected with GalNac-MASP-2-siRNA (Figure 6C). These data were remarkably consistent

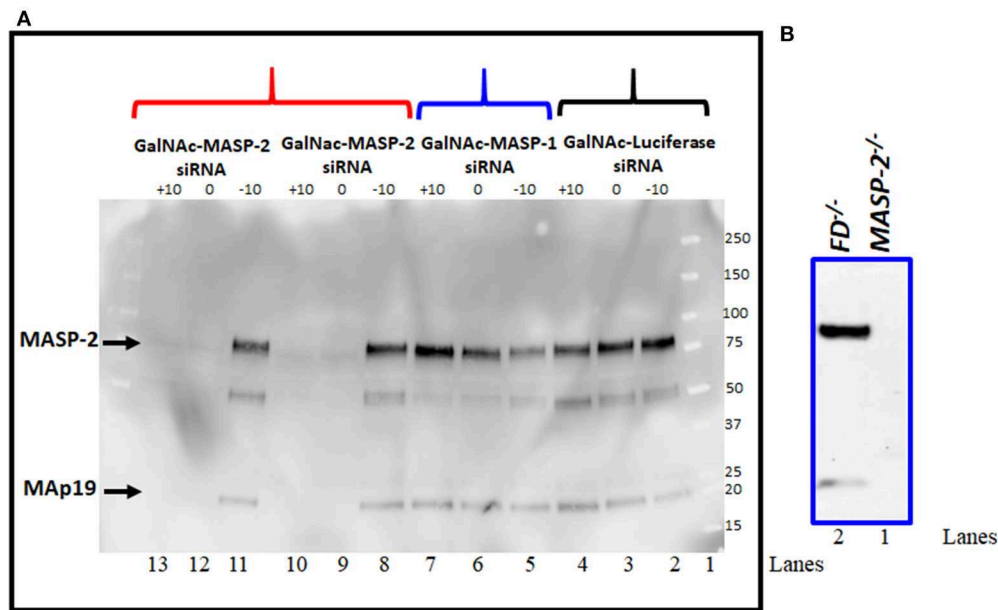


FIGURE 5 | (A) Western blot analysis showing nearly complete elimination of MASP-2 in the circulation of WT arthritic mice treated with GalNac-MASP-2-siRNA. MASP-2 protein from arthritis mice before (day -day 10) and after treatment and before disease induction (day 0) and after disease induction (day +10) was pulled out by using D-Mannose-Agarose beads as mentioned in the Materials and Methods. The primary detection antibody biotinylated Rat anti-human MASP-2/MAp19 (6G12) and secondary antibody HRP-conjugated Streptavidin were used, respectively. Complete absence of MASP-2 (~75 kDa) in the circulation of WT mice treated with GalNac-MASP-2-siRNA at day 0 and at day +10 (lanes 12, 13). Presence of MASP-2 prior to the treatment with GalNac-MASP-2 and prior to the disease induction (lane 11). Repeat data from another mouse treated identically with GalNac-MASP-2-siRNA (lanes 8, 9, and 10). Presence of MASP-2 in the circulation of mice treated with GalNac-MASP-1-siRNA at day -10, at 0 and at +10 (lanes 5, 6, and 7). Presence of MASP-2 in the circulation of mice treated identically with control GalNac-Luciferase-siRNA at day -10, at 0 and at +10 (lanes 2, 3, and 4). Lane 1 (protein marker). A band of MAp19 (a.k.a. sMAP) (19 kDa) was also seen in the sera from mice (lanes 2–8 and 11). Sera from *MASP-2*^{-/-} and *FD*^{-/-} mice with no disease were used as a negative and positive controls, respectively (**B** lanes 1 and 2). Representative data from GalNac-Luciferase-siRNA ($n = 1$) or GalNac-MASP-1-siRNA ($n = 1$) or GalNac-MASP-2-siRNA ($n = 2$) treated mice have been shown. Western blot were repeated 2x with identical results.

in all mice (10 out of 10) treated with GalNac-MASP-2-siRNA (**Figure 6C**). On the other hand, there was no significant effect on C4b deposition from mice treated identically with GalNac-Luciferase-siRNA or GalNac-MASP-1-siRNA neither before nor after induction of disease (**Figures 6A,B**). Overall, these data show that liver-targeted MASP-2 silencing by GalNac-MASP-2-siRNA completely abrogated C4b deposition (10 out of 10 mice) in the circulation and indicated that most of the MASP-2 is generated by the liver (**Figure 6C**). Furthermore, MASP-2 duplexes functionally impaired the lectin pathway of the complement. There was no significant off-target effect on C4b deposition of GalNac-Luciferase-siRNA or GalNac-MASP-1-siRNA (**Figure 6**).

GalNac-MASP-1 and MASP-2 Duplexes Silenced MASP-1 and MASP-2 Expression in the Liver Mice With Disease

Liver expression of MASP-1 and MASP-2 mRNA was examined in mice from the CAIA model. qRT PCR data from the liver of these mice at day 10 confirmed that there was a significant ($p < 0.05$) decrease in the expression of MASP-1 (70–95%) and MASP-2 (90%) with no off target effect on each other (**Figure 7**). However, in there was a decrease (58%) in expression of MASP-3

in the liver from normal mice with arthritis treated with GalNac-MASP-1-siRNA (data not shown) but not with GalNac-MASP-2-siRNA (data not shown). Later on we have not seen any effect on MASP-3 under normal physiological or mild pro-inflammatory conditions (**Figure 8C**). These data were analyzed in a blinded fashion using two different probes and primers by qRT PCR and results were identical.

Effect on the Expression of Alternative Pathway Components in Liver After Targeted RNAi Silencing of Individual and Combined MASP-1 and MASP-2 Genes

To examine the individual and combined effects of MASP-1 or MASP-2 duplexes on the AP components mice were injected again three times (at day -10, -5, and at day 0) with a single dose (10 mg/kg) of GalNac-Luciferase-siRNA or GalNac-MASP-1 siRNA or GalNac-MASP-2 or GalNac-MASP-1 + MASP-2 -siRNAs. No disease was induced in these mice but a single dose of LPS was injected at day 10 to generate mild pro-inflammatory conditions. No significant differences in the liver were seen in the expression of C3, FB, and C5 (**Figure 8**). Surprisingly a significant ($p < 0.05$) decrease of 72% was seen in the liver expression of FD, in mice without injection of LPS, after combined silencing

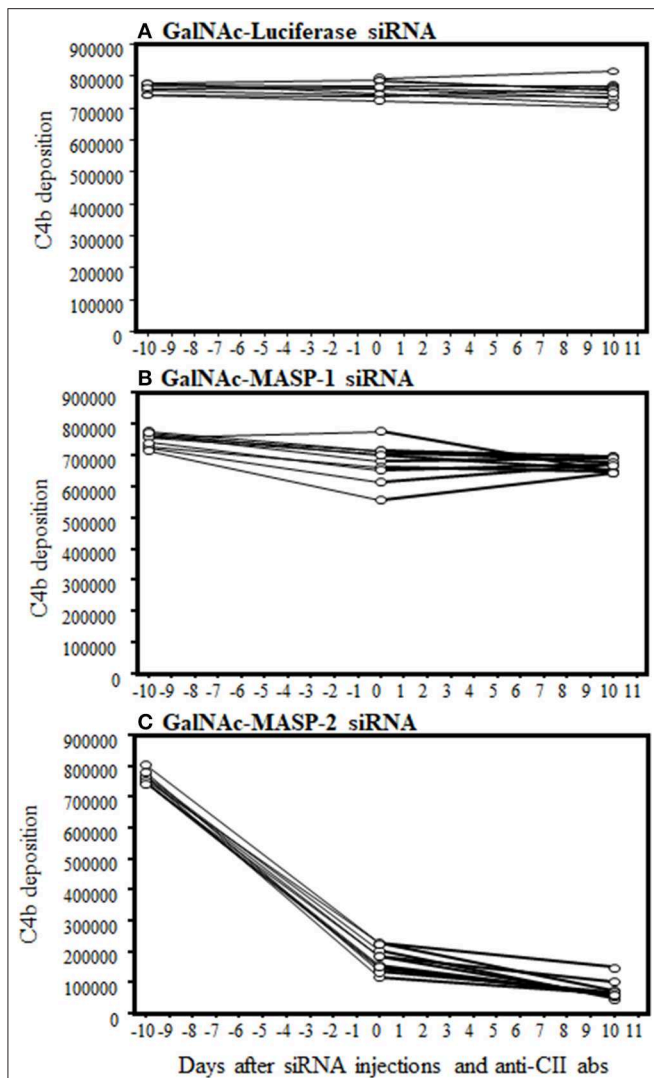


FIGURE 6 | ELISA showing a large decrease in C4b deposition on mannan in the sera from arthritic mice treated three times with GalNAc-MASP-2-siRNA but not with GalNAc-MASP-1-siRNA or GalNAc-Luciferase-siRNA. Sera from mice treated with MASPs or control siRNAs as mentioned above were diluted 1/500 in a tris/high salt/calcium buffer (inhibit any activation by the classical or the MBL pathway) examined at day-10 (before siRNAs injection & before disease induction), day 0 (after injection but before disease induction) and at day 10 (after disease induction). Human recombinant C4 protein was used to show the cleavage into C4b by MASP-2 (mouse MASP-2 bound as MBL/MASP-2 complexes onto the mannan efficiently cleaves human C4—and C4b becomes bound) followed by detection with anti-C4 antibody as mentioned in the Materials and Methods. No change in C4b deposition in the sera from arthritic mice treated with **(A)** GalNAc-Luciferase-siRNA **(B)** GalNAc-MASP-1-siRNA. **(C)** A substantial decrease in C4b deposition in the sera from mice treated GalNAc-MASP-2-siRNA. Data from all individual mice treated with GalNAc-Luciferase-siRNA ($n = 10$) or GalNAc-MASP-1-siRNA ($n = 10$) or GalNAc-MASP-2-siRNA ($n = 10$) have been shown. $p < 0.05$ at day 0 and at day +10 vs. at -10 mice injected GalNAc-Luciferase-siRNA, GalNAc-MASP-1-siRNA and GalNAc-MASP-2-siRNA.

of MASP-1 and MASP-2 (**Figure 8F**). This reduction in FD expression was reversed in mice injected with LPS (**Figure 8F**). MASP-2 silencing alone resulted in a reduction of FD mRNA in

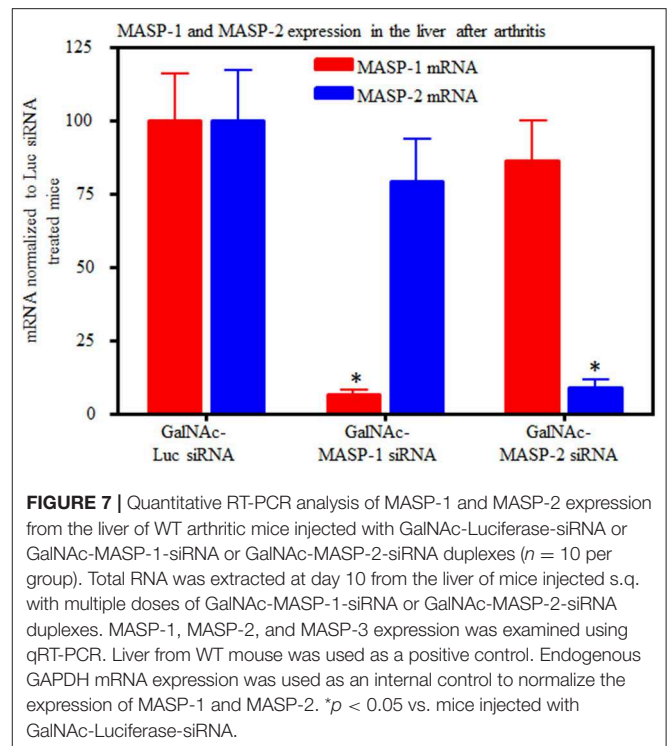
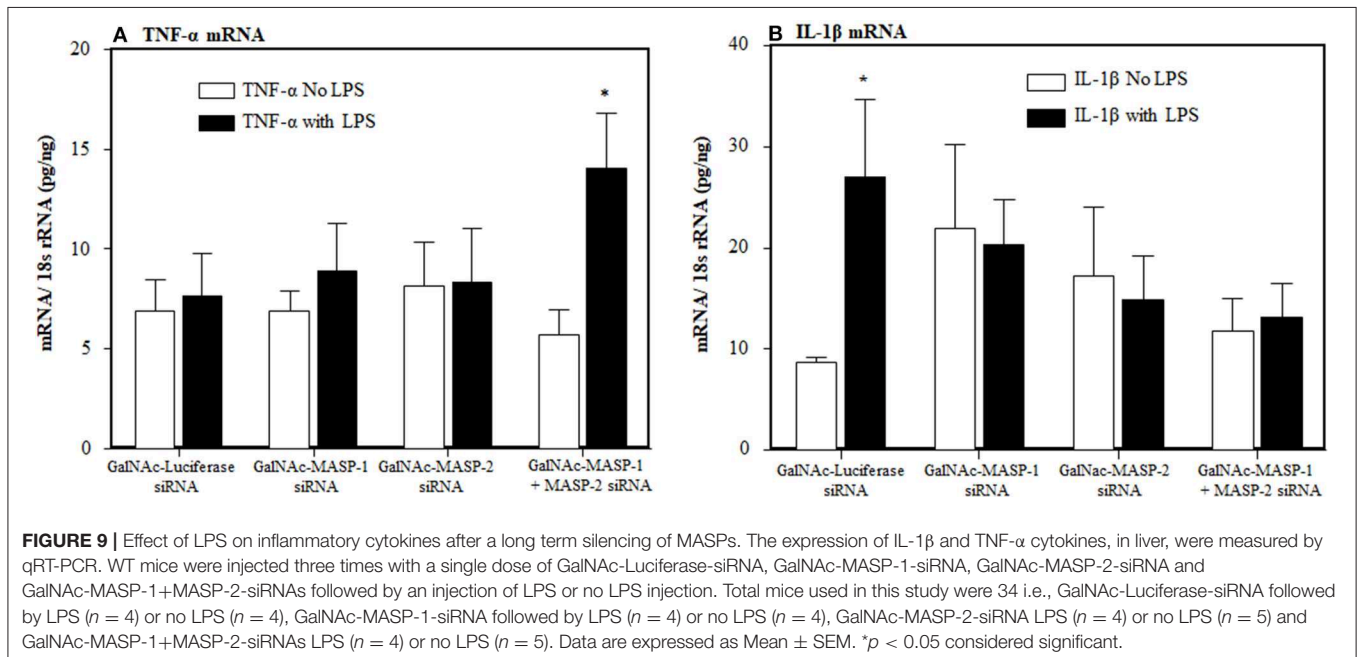
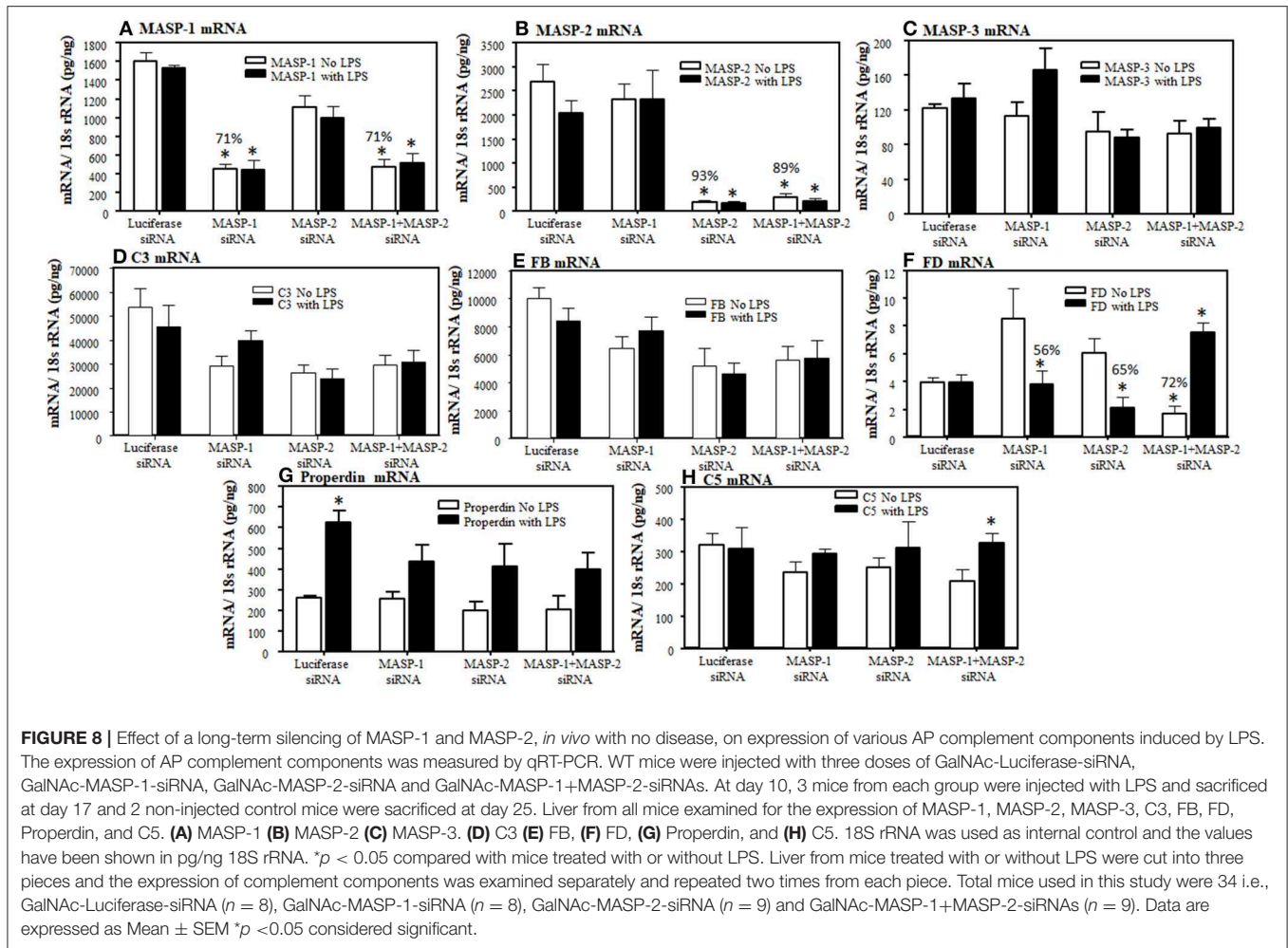


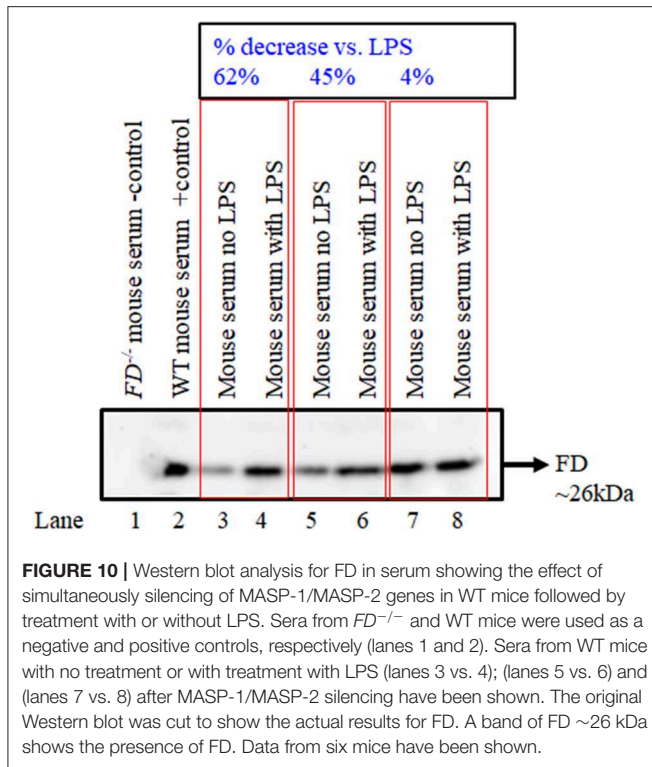
FIGURE 7 | Quantitative RT-PCR analysis of MASP-1 and MASP-2 expression from the liver of WT arthritic mice injected with GalNAc-Luciferase-siRNA or GalNAc-MASP-1-siRNA or GalNAc-MASP-2-siRNA duplexes ($n = 10$ per group). Total RNA was extracted at day 10 from the liver of mice injected s.q. with multiple doses of GalNAc-MASP-1-siRNA or GalNAc-MASP-2-siRNA duplexes. MASP-1, MASP-2, and MASP-3 expression was examined using qRT-PCR. Liver from WT mouse was used as a positive control. Endogenous GAPDH mRNA expression was used as an internal control to normalize the expression of MASP-1 and MASP-2. * $p < 0.05$ vs. mice injected with GalNAc-Luciferase-siRNA.

LPS treated mice (**Figure 8F**). LPS induced mild inflammatory response as confirmed by slightly enhanced expression of IL-1 β and TNF- α cytokines (**Figures 9A,B**). The expression of Properdin was also significantly ($p < 0.05$) increased in the liver of mice injected with GalNAc-Luciferase-siRNA followed by an injection of LPS but not without LPS (**Figure 8G**). The decrease in FD expression in the liver show that MASP-1 and MASP-2 together or MASP-2 alone might be regulating the transcription of FD in adipocytes present in the liver in a steady state, but during inflammation this regulating capacity might be lost or switched to something else.

FD Levels in the Circulation Increase After Simultaneously Silencing of MASP-1/MASP-2 in Response to the LPS

Western blot data show that there was qualitative increase in the levels of FD in the circulation of mice injected with LPS after silencing of both MASP-1/MASP-2 simultaneously, in contrast to the mice without injection of LPS (**Figure 10**). These data were consistent in six different mice injected with no LPS or with LPS after silencing both MASP-1/MASP-2 genes (**Figure 10**, lane 3 vs. 4; lane 5 vs. 6 and lane 7 vs. 8). Nonetheless there was variability (4 to 67%) regarding an increase in the levels of FD in the circulation of mice after silencing MASP-1/MASP-2 simultaneously (**Figure 10**). Again these FD Western blot data in the circulation confirms the mRNA expression data in the liver that combined silencing of MASP-1 and MASP-1 in the liver also effected the FD protein levels in the circulation.



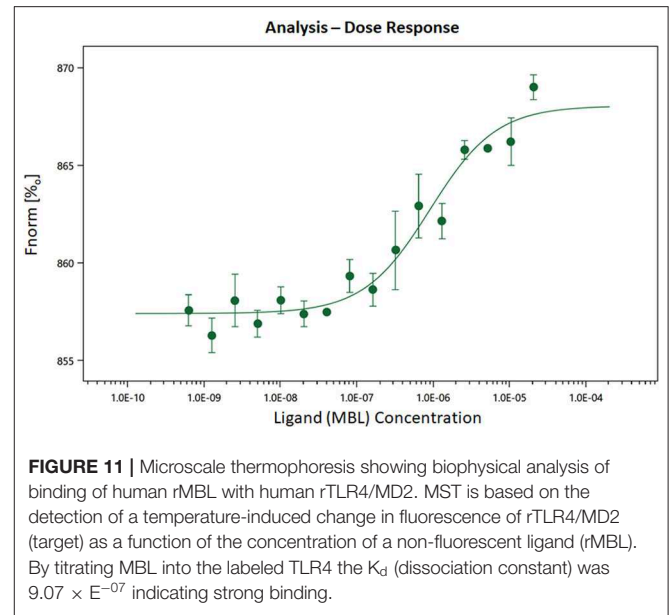


Binding Affinity of MBL to TLR4 by Microscale Thermophoresis

MBL has been previously shown to interact with TLR4 (67, 68), we sought to determine whether the effects of silencing might be through this pathway. In order to confirm the reported binding of MBL to TLR4, MST experiments were carried out. Human TLR4 was fluorescently labeled and titrated against varying concentrations of MBL (Figure 11). All MST traces appeared normal and there was no aggregation (data not shown). The final K_d for the binding was determined to be 907.28 ± 262.77 nM (Figure 11). Thus, we confirm that MBL binds TLR4 directly.

Expression of TLR4 and FD and in 3T3 Cells and Adipocytes

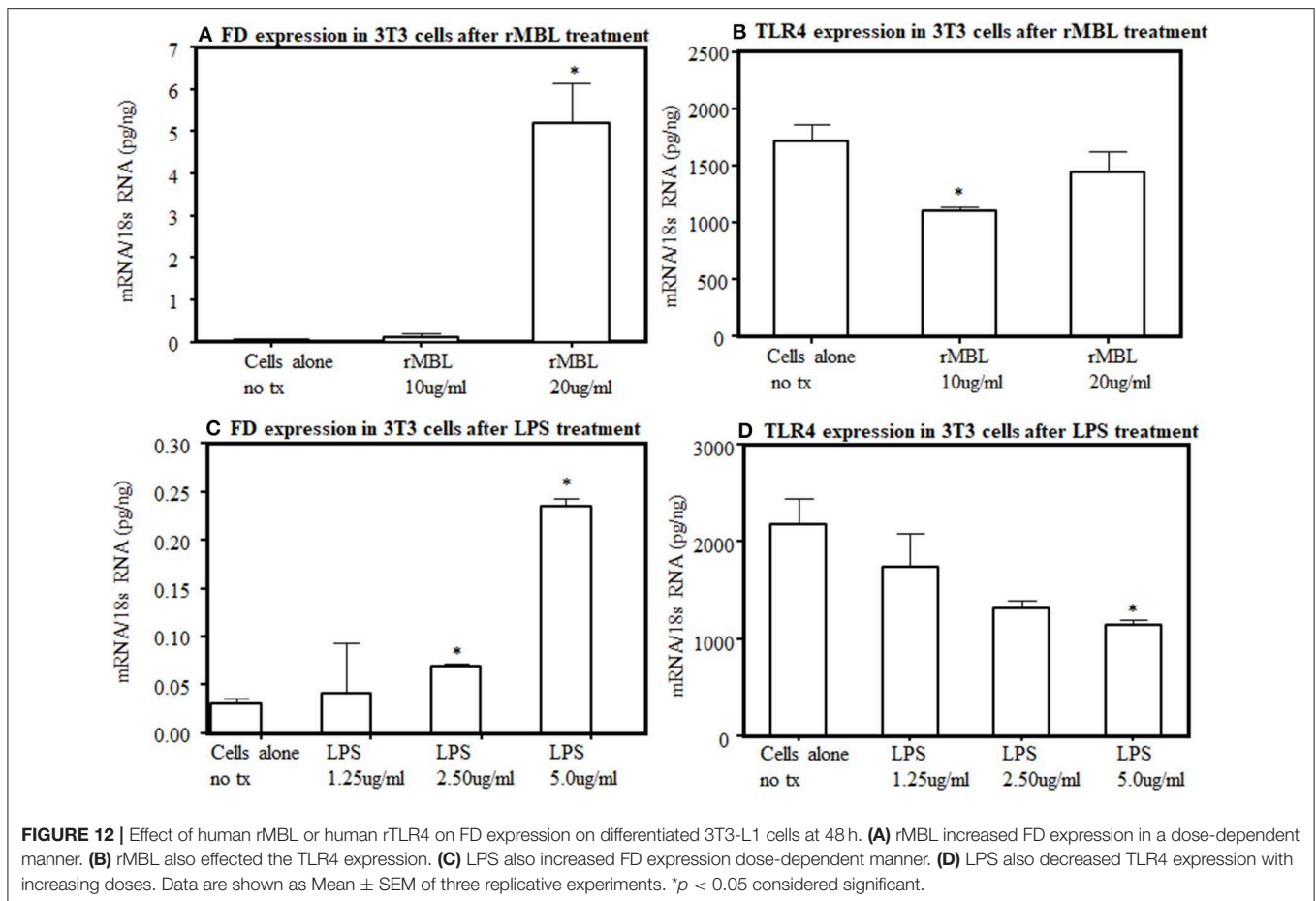
To further understand the interaction between lectin pathway components with LPS activation, we examined the interaction between MBL and TLR4. By flow cytometry, after several repetitions, we found no distinct expression of TLR4 receptors on the surface of 3T3L1 cells as well as from the primary adipocytes derived from WT mice (data not shown). We could not rule out that a small level of TLR4 undetectable with this method is present on their surface. Nonetheless, the endogenous expression of FD and TLR4 at the mRNA level was present in 3T3L1 differentiated adipocytes (Figure 12). There was a clear significant ($p < 0.006$) increase in the expression of FD in differentiated 3T3L1 cells 48 h after stimulating with $10 \mu\text{g/ml}$ and $20 \mu\text{g/ml}$ of recombinant MBL but only significant ($p < 0.05$) decrease in TLR4 expression was seen with $10 \mu\text{g/ml}$ not with $20 \mu\text{g/ml}$ of recombinant MBL (Figures 12A,B). There was a



dose-dependent increase in the expression of FD in differentiated 3T3L1 cells ($p < 0.05$) treated with LPS (Figure 12C). In contrast, a decreasing trend in the expression of TLR4 was seen in response to the LPS (Figure 12D). A correlation ($r = 0.51$) between FD and TLR4 expression in 3T3 cells in response to LPS ($5 \mu\text{g/ml}$) was noticed but it was not significant (Figures 12C,D). These data indicate although TLR4 is undetectable by flow cytometry on the surface of 3T3 cells but still it can bind to the MBL and its ligand, LPS and modulate FD expression (Figures 12A,D). These data suggest that MBL or LPS can bind to a common receptor TLR4 to regulate the transcription of FD in adipocytes.

DISCUSSION

In this study, we report five main findings. First, we have successfully generated GalNAc-conjugated siRNA duplexes of MASP-1 and MASP-2, and these duplexes exhibit a low IC50 for liver-targeted delivery. Second, these duplexes specifically targeted liver MASP-1 and MASP-2 genes and robustly silence their expression in the liver, leading to systemic depletion of these proteins. Our data confirm that MASP-1 and MASP-2 proteases are generated by the liver and consequently there is little extrahepatic generation of these proteases to effect disease phenotype locally in the joints. Furthermore, targeting of MASP-2 expression inhibited C4b deposition on mannan and therefore functionally inhibited the LP. Third, there was no significant effect of MASP-1 inhibition on CAIA in mice, whereas silencing of MASP-2 via RNAi inhibition partially attenuated arthritis in mice. Four, MASP-1 and MASP-2 may control the AP, possibly by regulating along with MBL the transcription of FD under normal physiological conditions. Finally, our MST data shows that MBL directly interact with TLR4, consistent with the observations of previous laboratories (67, 68).



The role of MASP-1 and MASP-2 proteases in arthritis has been unknown. The most abundant MASP in serum is MASP-1 (69, 70). MASP-1 has been shown to be predominately generated by the liver (36, 38, 71, 72), and it can, therefore, be targeted by RNAi using GalNAc-conjugated siRNAs due to the specific affinity of GalNAc for ASPGR (27, 36, 57). We found that MASP-1 silencing by RNAi had no significant effect on CAIA even with more than 95% silencing at the transcriptional level (in liver) as well as reduction in protein levels (in circulation; **Figures 3, 7, 4B**). As this gene also produces MASP-3, which is important in the induction of CAIA (40), any effect of this targeting in MASP-3 was not sufficient to affect disease generation. The minor non-significant decrease we have seen might be due to the inhibition of LPS-induced AP by MASP-1 inhibition. If so then it will be consistent with recently published studies showing an unexpected link between the LP and AP (46). We asked the question: why there was no significant decrease in the disease activity even by >95% inhibition of MASP-1 protease systemically? This might be related to difference in the importance of MASP-1 for the AP in *in vitro* and *in vivo* situations. Moreover, disease is dependent on the dose of anti-CII abs but not LPS (13) for LPS injected mice do not develop arthritis, but even if they do it is mild and transient lasting for couple of days (13). CAIA is dependent on the AP (61) and mice

lacking C3, FB and FD were somewhat resistance to CAIA (40, 60, 61). Mice lacking MASP-1/3, i.e., lacking both MASP-1 and MASP-3 were also resistance to CAIA (40). The synergistic role of MASP-1 and MASP-2 in RA can't be ruled out, since MASP-1 activates MASP-2 to activate the LP (29). The above mentioned small, non-significant decrease due to MASP-1 silencing in CAIA we have seen might also be due to the delayed activation of the LP MASP-2 by inhibiting MASP-1 for MASP-2 plays an important role to activate the AP via C4 bypass mechanism (62). We have not tested the role of MASP-1 in zymosan-induced arthritis (ZIA) and one can draw inferences that these mice will not be protected based on the above study (46). Furthermore, serum naturally have antibodies to yeast so it can complicate the interpretation by activation antibody-dependent mechanisms such as the CP.

CAIA is dependent not only on the AP but also on generation of C5a. Normally the AP contribute 80–95% of complement activation (73). Mice lacking C5 or treated with GalNAc-C5-siRNA or anti-C5 inhibitory antibody do not develop arthritis (15, 16, 74) despite the presence of MASP-1 and MASP-2. We also found no effect of MASP-1 and MASP-2 silencing on the expression of C5 in the liver (**Figure 8H**). These data confirm that MASP-1 and MASP-2 inhibition have no effect on the liver expression of downstream complement components, which are essential for the precipitation of disease in the joints. As MASP-1

or MASP-2 is knocked down, the effect of LPS on IL-1 β is blunted. As MASP-1 and MASP2 is knocked down, the effect of LPS on IL-1 β is completely blocked, indicating that the MASPs are also important for the inflammatory response against LPS. Again, these cytokines data are consistent with CDA in mice treated with MASP-1 or MASP-2 siRNAs (**Figure 3A**).

Here, we found that nearly complete silencing of MASP-2 expression by RNAi in the liver using GalNac-MASP-2-siRNA leads to a partial but significant decrease in the CDA (**Figure 3A**). These results were consistent with our previous study in which mice lacking MASP-2/sMAP were also partially protected from CAIA (62). Interestingly, we have generated the same phenotype in WT mice as seen in *MASP-2/sMAP*^{-/-} mice by injecting GalNac-MASP-2-siRNA duplex, i.e., nearly complete elimination of MASP-2/sMAP proteins in the circulation (**Figure 5B**). In this study we could not differentiate between the effects of MASP-2 and sMAP since we have silenced both and the function of sMAP is unknown. The duplex of GalNac-MASP-2 silenced both MASP-2 and sMAP, therefore, created an identical phenotype to the *MASP-2/sMAP*^{-/-} mice (**Figures 5A,B**). Thus, liver-targeted inhibition of MASP-2 might be beneficial clinically to treat many ischemia reperfusion injuries (IRI) due to their dependency on MASP-2. In fact, MASP-2 has been shown to play an important role in many IRI mouse models such as myocardial infarction, gastrointestinal IRI, and cerebral IRI because mice lacking MBL or MASP-2

were protected but not mice lacking C4 (75). In these studies it has been shown that MASP-2-dependent C4 bypass pathway activated the AP and played an important role in IRI (75). But none of these studies, have explored the mechanism(s) that leads to MASP-2-dependent C4-bypass activation of the AP and which component of the AP is involved or regulated? One study has shown that MASP-2 can directly cleave C3 without involvement of C4 or C2 (30) but still it is not enough to perpetuate AP activation. Here we report for the first time that MASP-2 might directly regulate the AP by further regulating the transcription of FD in adipose tissue to generate a feedback loop for FD. FD is predominately generated by adipocytes (38, 40), and adipose tissue is present in or around all vital organs of the body including liver and joints (data not shown). Mice lacking fat or FD have defective AP (76) identical to *MASP-1/3*^{-/-} mice or *MASP-3*^{-/-} mice (40, 41). Moreover, mice lacking FD or *MBL A/C/FD*^{-/-} mice are totally resistance to arthritis (59).

To further explore mechanisms by which MASP-1 and MASP-2 regulate the transcription of FD, we found that during homeostasis there was a significant decrease of 72% in the expression FD in the liver of mice injected simultaneously with GalNac-MASP-1 plus GalNac-MASP-2 duplexes vs. singly injected mice (**Figure 8F**). Interestingly, with this combined treatment, there was no effect on expression of C3, FB, and C5 in the liver (**Figures 8D,E,H**). No decrease in Properdin expression was seen with combined silencing of MASP-1 and

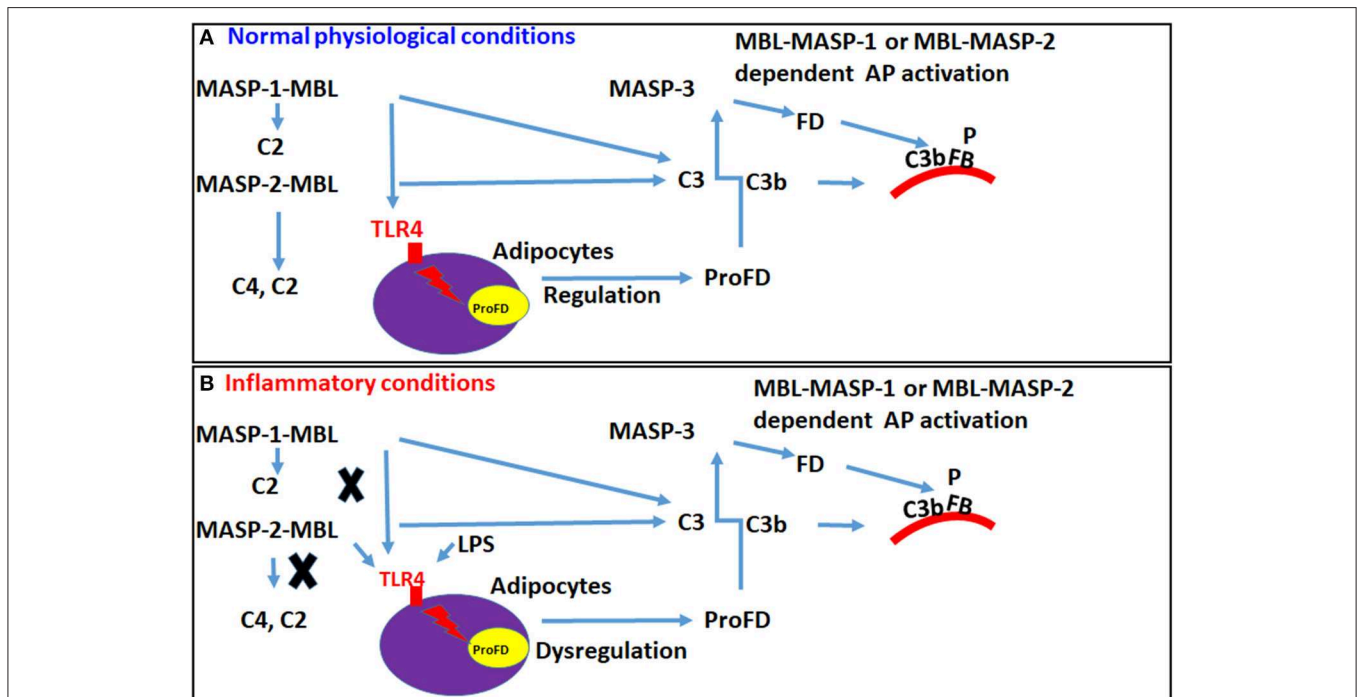


FIGURE 13 | A hypothetical model in mouse showing how MBL or conjugates of MBL-MASP-1 or MBL-MASP-2 can regulate the transcription of FD to regulate the activation of the AP via TLR4 receptors. Circulating MBL alone or MBL-MASP-1 or MBL-MASP-2 complexes can directly interact with disguised TLR4 on adipocytes to activate the complement system via enhancing the expression of FD to regulate the AP pathway. **(A)** MBL or MBL-MASP-1 or MBL-MASP-2 conjugates under normal physiological conditions can bind to the TLR4 and regulate the expression of FD but MASP-2 might be dominant. **(B)** In contrast, under inflammatory conditions, MBL or MBL-MASP-1 or MBL-MASP-2 conjugates might be displaced by the LPS and modulate the transcription of FD through TLR4 receptors.

MASP-2 (**Figure 8G**). Properdin is known to stabilize AP-C3 convertase, indicating that MASP-1 and MASP-2 contributes the AP by sustaining the expression of both FD and properdin. Overall these data showed that the conjugates of both MBL-MASP-1 and MBL-MASP-2 might be directly regulating the transcription of FD. Our *in vivo* data show that MASP-1 and 2 regulate FD transcription under normal physiological conditions but not under inflammatory conditions (**Figure 8F**). An inflammatory conditions in these mice were confirmed by measure of IL-1 β and TNF- α in the liver subsequently after silencing of MASP-1 and MASP-2 and LPS injection (**Figures 9A,B**). We hypothesize that regulation of transcription of FD is switched under inflammatory conditions from MASP-1 and MASP-2 to something else, such as LPS. LPS is a ligand for TLR4 receptors and also competes with MBL for its binding with TLR4 (67, 68). Thus, circulating complexes of MBL-MASP-1 or MBL-MASP-2 or MBL might be replaced with LPS while transitioning from normal to inflammatory conditions. MBL, a prototypical pattern recognition molecule can also modify the inflammatory response during bacterial and viral infections. MBL could suppress LPS-induced TNF- α and IL-12 production in THP-1 cells and monocyte-derived dendritic cells by inhibiting LPS-induced NF- κ B DNA binding and translocation (68). We hypothesize that MBL-MASP-1 or MASP-2 conjugates can control the transcription of FD in liver under normal physiological conditions (**Figure 13**). A limitation of our study is that we have not examined the expression of FD in the liver of *MBL*^{-/-} and *MASP-2*^{-/-} mice and this is due to the non-availability of these mice from any commercial source at the time these data were collected. We have also not used complexes of MBL-MASP-1 or MBL-MASP-2 due to the autocatalytic nature of these enzymes. However, transient knockdown may provide a more representative picture if the importance of MASP-2, as these mice have not had the same opportunity to develop compensatory mechanisms as of *MASP-2*^{-/-} mice.

We confirmed by MST a direct binding between human recombinant MBL and human recombinant TLR4 with an equilibrium dissociation constant (K_d) of 907.28 nM concentration (**Figure 11**). To further provide the evidence that interactions between MBL-MASPs and TLR4 can occur, *in vivo*, we found primary adipocytes from mouse adipose tissue injected with LPS have reasonably good expression of TLR4 but a huge expression of FD (data not shown). Conversely, differentiated 3T3L1 cells, which develops adipocyte-like morphology, have high levels of TLR4 but low levels of FD expression (**Figure 12**). Interestingly, in these differentiated 3T3 cells, with MBL or LPS treatment, TLR4 expression decreases but FD expression increases (**Figure 12**) again suggesting a link between LPS, TLR4, and FD transcription (**Figure 13**).

Overall, in this study, we have generated highly potent and specific MASP-1 and MASP-2 siRNA duplexes, especially targeting liver for a longer time with an excellent clinical therapeutic potential. These duplexes can be tested further in various mouse models of diseases involving MASP-1 and MASP-2 such as IgA Nephropathy (77) and experimental pneumococcal

meningitis (78) to understand the contribution of liver MASP1 and MASP2 to disease pathology in conditions where LP activations has been implicated. Humanized MASP-2 duplexes can also be developed and tested. We think that our MASP-2 siRNA duplexes present another therapeutic option not only for arthritis but for above mentioned diseases and it will be worth to explore further.

DATA AVAILABILITY STATEMENT

The datasets generated for this study are available on request to the corresponding author.

ETHICS STATEMENT

The animal study was reviewed and approved by IACUC UC Denver.

AUTHOR CONTRIBUTIONS

VH and NB planned the strategy to conjugate GalNAc with MASP-1 and MASP-2 targeting liver, discussed all analyzed data, analyzed all data, and wrote all parts of the manuscript. NB also performed all *in vivo* studies. AB and DD synthesized, conjugated, and tested MASP-1 or MASP-2 duplexes. RS, NH, and JR helped Western blot analysis, *in vitro* and *in vivo* studies. JD and PG helped in designing the experiment and provided valuable reagents and also made valuable suggestions for the discussion. JL performed MBL-TLR-4 binding experiments. AH, RP, and ST performed MASPs related ELISA and Western blots. RP also performed *in vivo* studies along with NB. All authors read this manuscript and made valuable suggestions.

FUNDING

This study was supported by a National Institutes of Health grant R01AR51749 to VH (PI) and NB (Co-I), and an Alnylam Pharmaceutical Inc., subcontract to NB (PI). This study was also supported by the Hungarian National Research, Development and Innovation Office OTKA grants K119374 and KH130376.

ACKNOWLEDGMENTS

We are thankful to Ms. Umarani Pugazhenthii, the qRT-PCR facility at the University of Colorado at Denver Cancer Center Shared Resources for designing the primers for MASPs for qPCR analysis. We are thankful to the Biophysics Core, Department of Biochemistry and Molecular Genetics, University of Colorado Denver Anschutz Medical Campus for technically helping us to show the binding of rMBL to rTLR4 using their Microscale Thermophoresis equipment.

REFERENCES

- Cross M, Smith E, Hoy D, Carmona L, Wolfe F, Vos T, et al. The global burden of rheumatoid arthritis: estimates from the global burden of disease 2010 study. *Ann Rheumat Dis.* (2014) 73:1316–22. doi: 10.1136/annrheumdis-2013-204627
- Widdifield J, Paterson JM, Huang A, Bernatsky S. Causes of death in rheumatoid arthritis: how do they compare to the general population? *Arthritis Care Res.* (2018) 70:1748–55. doi: 10.1002/acr.23548
- Helmick CG, Felson DT, Lawrence RC, Gabriel S, Hirsch R, Kwoh CK, et al. Estimates of the prevalence of arthritis and other rheumatic conditions in the United States. Part I. *Arthritis Rheum.* (2008) 58:15–25. doi: 10.1002/art.23177
- Kim WS, Ogura M, Kwon HC, Choi D. Looking to the future and learning lessons from the recent past: changing stakeholder perceptions of biosimilars in cancer. *Future Oncol.* (2017) 13:17–29. doi: 10.2217/fon-2017-0154
- Park JK, Lee YJ, Shin K, Ha YJ, Lee EY, Song YW, et al. Impact of temporary methotrexate discontinuation for 2 weeks on immunogenicity of seasonal influenza vaccination in patients with rheumatoid arthritis: a randomised clinical trial. *Ann Rheum Dis.* (2018) 77:898–904. doi: 10.1136/annrheumdis-2018-213222
- Markatseli TE, Voulgari PV, Alamanos Y, Drosos AA. Prognostic factors of radiological damage in rheumatoid arthritis: a 10-year retrospective study. *J Rheumatol.* (2011) 38:44–52. doi: 10.3899/jrheum.100514
- Bobbio-Pallavicini F, Alpini C, Caporali R, Avalle S, Bugatti S, Montecucco C. Autoantibody profile in rheumatoid arthritis during long-term infliximab treatment. *Arthritis Res Ther.* (2004) 6:R264–72. doi: 10.1186/ar1173
- Caramaschi P, Biasi D, Tonolli E, Pieropan S, Martinelli N, Carletto A, et al. Antibodies against cyclic citrullinated peptides in patients affected by rheumatoid arthritis before and after infliximab treatment. *Rheumatol Int.* (2005) 26:58–62. doi: 10.1007/s00296-004-0571-9
- Yamada H, Ozawa T, Kishi H, Okada S, Nakashima Y, Muraguchi A, et al. Cutting edge: B cells expressing cyclic citrullinated peptide-specific antigen receptor are tolerized in normal conditions. *J Immunol.* (2018) 201:3492–6. doi: 10.4049/jimmunol.1800826
- Firestein GS, McInnes IB. Immunopathogenesis of rheumatoid arthritis. *Immunity.* (2017) 46:183–96. doi: 10.1016/j.immuni.2017.02.006
- Mehta G, Scheinman RI, Holers VM, Banda NK. A new approach for the treatment of arthritis in mice with a novel conjugate of an anti-C5aR1 antibody and C5 small interfering RNA. *J Immunol.* (2015) 194:5446–54. doi: 10.4049/jimmunol.1403012
- Bemis EA, Norris JM, Seifert J, Frazer-Abel A, Okamoto Y, Feser ML, et al. Complement and its environmental determinants in the progression of human rheumatoid arthritis. *Mol Immunol.* (2019) 112:256–65. doi: 10.1016/j.molimm.2019.05.012
- Banda NK, Levitt B, Glogowska MJ, Thurman JM, Takahashi K, Stahl GL, et al. Targeted inhibition of the complement alternative pathway with complement receptor 2 and factor H attenuates collagen antibody-induced arthritis in mice. *J Immunol.* (2009) 183:5928–37. doi: 10.4049/jimmunol.0901826
- Banda NK, Mehta G, Kjaer TR, Takahashi M, Schaack J, Morrison TE, et al. Essential role for the lectin pathway in collagen antibody-induced arthritis revealed through use of adenovirus programming complement inhibitor MAP44 expression. *J Immunol.* (2014) 193:2455–68. doi: 10.4049/jimmunol.1400752
- Wang Y, Kristan J, Hao L, Lenkoski CS, Shen Y, Matis LA. A role for complement in antibody-mediated inflammation: C5-deficient DBA/1 mice are resistant to collagen-induced arthritis. *J Immunol.* (2000) 164:4340–7. doi: 10.4049/jimmunol.164.8.4340
- Wang Y, Rollins SA, Madri JA, Matis LA. Anti-C5 monoclonal antibody therapy prevents collagen-induced arthritis and ameliorates established disease. *Proc Natl Acad Sci USA.* (1995) 92:8955–9. doi: 10.1073/pnas.92.19.8955
- Fridkis-Hareli M, Storek M, Or E, Altman R, Katti S, Sun F, et al. The human complement receptor type 2 (CR2)/CR1 fusion protein TT32, a novel targeted inhibitor of the classical and alternative pathway C3 convertases, prevents arthritis in active immunization and passive transfer mouse models. *Mol Immunol.* (2019) 105:150–64. doi: 10.1016/j.molimm.2018.09.013
- Vergunst CE, Gerlag DM, Dinant H, Schulz L, Vinkenoog M, Smeets TJ, et al. Blocking the receptor for C5a in patients with rheumatoid arthritis does not reduce synovial inflammation. *Rheumatology.* (2007) 46:1773–8. doi: 10.1093/rheumatology/kem222
- Kemp PA, Spragg JH, Brown JC, Morgan BP, Gunn CA, Taylor PW. Immunohistochemical determination of complement activation in joint tissues of patients with rheumatoid arthritis and osteoarthritis using neoantigen-specific monoclonal antibodies. *J Clin Lab Immunol.* (1992) 37:147–62.
- Hogasen K, Mollnes TE, Harboe M, Gotze O, Hammer HB, Oppermann M. Terminal complement pathway activation and low lysis inhibitors in rheumatoid arthritis synovial fluid. *J Rheumatol.* (1995) 22:24–8.
- Kaplan RA, Curd JG, Deheer DH, Carson DA, Pangburn MK, Muller-Eberhard HJ, et al. Metabolism of C4 and factor B in rheumatoid arthritis. Relation to rheumatoid factor. *Arthritis Rheum.* (1980) 23:911–20. doi: 10.1002/art.1780230806
- Swaak AJ, Van Rooyen A, Planten O, Han H, Hattink O, Hack E. An analysis of the levels of complement components in the synovial fluid in rheumatic diseases. *Clin Rheumatol.* (1987) 6:350–7. doi: 10.1007/BF02206833
- Davies KA, Schifferli JA, Walport MJ. Complement deficiency and immune complex disease. *Springer Semin Immunopathol.* (1994) 15:397–416. doi: 10.1007/BF01837367
- Mevorach D, Mascarenhas JO, Gershov D, Elkon KB. Complement-dependent clearance of apoptotic cells by human macrophages. *J Exp Med.* (1998) 188:2313–20. doi: 10.1084/jem.188.12.2313
- Zhou Z, Xu MJ, Gao B. Hepatocytes: a key cell type for innate immunity. *Cell Mol Immunol.* (2016) 13:301–15. doi: 10.1038/cmi.2015.97
- Morgan BP, Gasque P. Extrahepatic complement biosynthesis: where, when and why? *Clin Exp Immunol.* (1997) 107:1–7. doi: 10.1046/j.1365-2249.1997.d01-890.x
- Morris KM, Aden DP, Knowles BB, Colten HR. Complement biosynthesis by the human hepatoma-derived cell line HepG2. *J Clin Invest.* (1982) 70:906–13. doi: 10.1172/JCI110687
- Holers VM, Banda NK. Complement in the initiation and evolution of rheumatoid arthritis. *Front Immunol.* (2018) 9:1057. doi: 10.3389/fimmu.2018.01057
- Heja D, Kocsis A, Dobo J, Szilagy K, Szasz R, Zavodszky P, et al. Revised mechanism of complement lectin-pathway activation revealing the role of serine protease MASP-1 as the exclusive activator of MASP-2. *Proc Natl Acad Sci USA.* (2012) 109:10498–503. doi: 10.1073/pnas.1202588109
- Yaseen S, Demopoulos G, Dudler T, Yabuki M, Wood CL, Cummings WJ, et al. Lectin pathway effector enzyme mannan-binding lectin-associated serine protease-2 can activate native complement C3 in absence of C4 and/or C2. *FASEB J.* (2017) 31:2210–9. doi: 10.1096/fj.201601306R
- Degn SE, Thiel S, Jensenius JC. New perspectives on mannan-binding lectin-mediated complement activation. *Immunobiology.* (2007) 212:301–11. doi: 10.1016/j.imbio.2006.12.004
- Gaya da Costa M, Poppelaars F, Berger SP, Daha MR, Seelen MA. The lectin pathway in renal disease: old concept and new insights. *Nephrol Dial Transplant.* (2018) 33:2073–9. doi: 10.1093/ndt/gfy073
- Takahashi M, Mori S, Shigeta S, Fujita T. Role of MBL-associated serine protease (MASP) on activation of the lectin complement pathway. *Adv Exp Med Biol.* (2007) 598:93–104. doi: 10.1007/978-0-387-71767-8_8
- Sirmaci A, Walsh T, Akay H, Spiliopoulos M, Sakalar YB, Hasanefendioglu-Bayrak A, et al. MASPI mutations in patients with facial, umbilical, coccygeal, and auditory findings of Carnevale, Malpuech, OSA, and Michels syndromes. *Am J Hum Genet.* (2010) 87:679–86. doi: 10.1016/j.ajhg.2010.09.018
- Degn SE, Hansen AG, Steffensen R, Jacobsen C, Jensenius JC, Thiel S. MAP44, a human protein associated with pattern recognition molecules of the complement system and regulating the lectin pathway of complement activation. *J Immunol.* (2009) 183:7371–8. doi: 10.4049/jimmunol.0902388
- Banda NK, Desai D, Scheinman RI, Pihl R, Sekine H, Fujita T, et al. Targeting of liver mannan-binding lectin-associated serine protease-3 with RNA interference ameliorates disease in a mouse model of rheumatoid arthritis. *Immunohorizons.* (2018) 2:274–95. doi: 10.4049/immunohorizons.1800053
- Degn SE, Jensen L, Hansen AG, Duman D, Tekin M, Jensenius JC, et al. Mannan-binding lectin-associated serine protease (MASP)-1 is crucial for lectin pathway activation in human serum, whereas neither MASP-1 nor MASP-3 is required for alternative pathway function. *J Immunol.* (2012) 189:3957–69. doi: 10.4049/jimmunol.1201736

38. Takahashi M, Ishida Y, Iwaki D, Kanno K, Suzuki T, Endo Y, et al. Essential role of mannose-binding lectin-associated serine protease-1 in activation of the complement factor D. *J Exp Med.* (2010) 207:29–37. doi: 10.1084/jem.20090633
39. Takahashi M, Iwaki D, Kanno K, Ishida Y, Xiong J, Matsushita M, et al. Mannose-binding lectin (MBL)-associated serine protease (MASP)-1 contributes to activation of the lectin complement pathway. *J Immunol.* (2008) 180:6132–8. doi: 10.4049/jimmunol.180.9.6132
40. Banda NK, Takahashi M, Levitt B, Glogowska M, Nicholas J, Takahashi K, et al. Essential role of complement mannose-binding lectin-associated serine proteases-1/3 in the murine collagen antibody-induced model of inflammatory arthritis. *J Immunol.* (2010) 185:5598–606. doi: 10.4049/jimmunol.1001564
41. Hayashi M, Ishida Y, Machida T, Ogata Y, Omori T, Takasumi M, et al. MASP-1 and MASP-3 play independent roles in activation of the lectin and alternative complement pathways. *Mol Immunol.* (2018) 102:129–235. doi: 10.1016/j.molimm.2018.06.091
42. Dobo J, Kocsis A, Gal P. Be on target: strategies of targeting alternative and lectin pathway components in complement-mediated diseases. *Front Immunol.* (2018) 9:1851. doi: 10.3389/fimmu.2018.01851
43. Dobo J, Szakacs D, Oroszlan G, Kortvely E, Kiss B, Boros E, et al. MASP-3 is the exclusive pro-factor D activator in resting blood: the lectin and the alternative complement pathways are fundamentally linked. *Sci Rep.* (2016) 6:31877. doi: 10.1038/srep31877
44. Takahashi M, Sekine H, Endo Y, Fujita T. Comment on “Mannan-binding lectin-associated serine protease (MASP)-1 is crucial for lectin pathway activation in human serum, whereas neither MASP-1 nor MASP-3 is required for alternative pathway function”. *J Immunol.* (2013) 190:2477. doi: 10.4049/jimmunol.1390002
45. Pihl R, Jensen L, Hansen AG, Thogersen IB, Andres S, Dagnaes-Hansen F, et al. Analysis of factor D isoforms in malpuech-michels-mingarelli-carnevale patients highlights the role of MASP-3 as a maturase in the alternative pathway of complement. *J Immunol.* (2017) 199:2158–70. doi: 10.4049/jimmunol.1700518
46. Parej K, Kocsis A, Enyingi C, Dani R, Oroszlan G, Beinrohr L, et al. Cutting edge: a new player in the alternative complement pathway, MASP-1 is essential for LPS-induced, but not for zymosan-induced, alternative pathway activation. *J Immunol.* (2018) 200:2247–52. doi: 10.4049/jimmunol.1701421
47. Thiel S, Vorup-Jensen T, Stover CM, Schwaeble W, Laursen SB, Poulsen K, et al. A second serine protease associated with mannan-binding lectin that activates complement. *Nature.* (1997) 386:506–10. doi: 10.1038/386506a0
48. Stover CM, Thiel S, Thelen M, Lynch NJ, Vorup-Jensen T, Jensenius JC, et al. Two constituents of the initiation complex of the mannan-binding lectin activation pathway of complement are encoded by a single structural gene. *J Immunol.* (1999) 162:3481–90.
49. Takahashi M, Endo Y, Fujita T, Matsushita M. A truncated form of mannose-binding lectin-associated serine protease (MASP)-2 expressed by alternative polyadenylation is a component of the lectin complement pathway. *Int Immunol.* (1999) 11:859–63. doi: 10.1093/intimm/11.5.859
50. Wallis R, Dodds AW, Mitchell DA, Sim RB, Reid KB, Schwaeble WJ. Molecular interactions between MASP-2, C4, and C2 and their activation fragments leading to complement activation via the lectin pathway. *J Biol Chem.* (2007) 282:7844–51. doi: 10.1074/jbc.M606326200
51. Chen CB, Wallis R. Two mechanisms for mannose-binding protein modulation of the activity of its associated serine proteases. *J Biol Chem.* (2004) 279:26058–65. doi: 10.1074/jbc.M401318200
52. Daha MR, van Kooten C, Roos A. Compliments from complement: a fourth pathway of complement activation? *Nephrol Dial Transplant.* (2006) 21:3374–6. doi: 10.1093/ndt/gfl515
53. May JE, Frank MM. Hemolysis of sheep erythrocytes in guinea pig serum deficient in the fourth component of complement. Antibody I, and serum requirements. *J Immunol.* (1973) 111:1671–7.
54. Farries TC, Steuer KL, Atkinson JP. The mechanism of activation of the alternative pathway of complement by cell-bound C4b. *Mol Immunol.* (1990) 27:1155–61. doi: 10.1016/0161-5890(90)90104-8
55. Seyfarth J, Garred P, Madsen HO. Extra-hepatic transcription of the human mannose-binding lectin gene (mbl2) and the MBL-associated serine protease 1–3 genes. *Mol Immunol.* (2006) 43:962–71. doi: 10.1016/j.molimm.2005.06.033
56. Morrissey DV, Lockridge JA, Shaw L, Blanchard K, Jensen K, Breen W, et al. Potent and persistent *in vivo* anti-HBV activity of chemically modified siRNAs. *Nat Biotechnol.* (2005) 23:1002–7. doi: 10.1038/nbt1122
57. Rajeev KG, Nair JK, Jayaraman M, Charisse K, Taneja N, O’Shea J, et al. Hepatocyte-specific delivery of siRNAs conjugated to novel non-nucleosidic trivalent N-acetylgalactosamine elicits robust gene silencing *in vivo*. *ChemBiochem.* (2015) 16:903–8. doi: 10.1002/cbic.201500023
58. Schwartz AL, Fridovich SE, Lodish HF. Kinetics of internalization and recycling of the asialoglycoprotein receptor in a hepatoma cell line. *J Biol Chem.* (1982) 257:4230–7.
59. Banda NK, Levitt B, Wood AK, Takahashi K, Stahl GL, Holers VM, et al. Complement activation pathways in murine immune complex-induced arthritis and in C3a and C5a generation *in vitro*. *Clin Exp Immunol.* (2010) 159:100–8. doi: 10.1111/j.1365-2249.2009.04035.x
60. Banda NK, Takahashi K, Wood AK, Holers VM, Arend WP. Pathogenic complement activation in collagen antibody-induced arthritis in mice requires amplification by the alternative pathway. *J Immunol.* (2007) 179:4101–9. doi: 10.4049/jimmunol.179.6.4101
61. Banda NK, Thurman JM, Kraus D, Wood A, Carroll MC, Arend WP, et al. Alternative complement pathway activation is essential for inflammation and joint destruction in the passive transfer model of collagen-induced arthritis. *J Immunol.* (2006) 177:1904–12. doi: 10.4049/jimmunol.177.3.1904
62. Banda NK, Acharya S, Scheinman RI, Mehta G, Takahashi M, Endo Y, et al. Deconstructing the lectin pathway in the pathogenesis of experimental inflammatory arthritis: essential role of the lectin ficolin B and mannose-binding protein-associated serine protease 2. *J Immunol.* (2017) 199:1835–45. doi: 10.4049/jimmunol.1700119
63. Schmittgen TD, Livak KJ. Analyzing real-time PCR data by the comparative C(T) method. *Nat Protoc.* (2008) 3:1101–8. doi: 10.1038/nprot.2008.73
64. Thiel S, Jensen L, Degn SE, Nielsen HJ, Gal P, Dobo J, et al. Mannan-binding lectin (MBL)-associated serine protease-1 (MASP-1), a serine protease associated with humoral pattern-recognition molecules: normal and acute-phase levels in serum and stoichiometry of lectin pathway components. *Clin Exp Immunol.* (2012) 169:38–48. doi: 10.1111/j.1365-2249.2012.04584.x
65. Degn SE, Thiel S, Nielsen O, Hansen AG, Steffensen R, Jensenius JC. MAP19, the alternative splice product of the MASP2 gene. *J Immunol Methods.* (2011) 373:89–101. doi: 10.1016/j.jim.2011.08.006
66. Arend WP, Mehta G, Antonoli AH, Takahashi M, Takahashi K, Stahl GL, et al. Roles of adipocytes and fibroblasts in activation of the alternative pathway of complement in inflammatory arthritis in mice. *J Immunol.* (2013) 190:6423–33. doi: 10.4049/jimmunol.1300580
67. Shimizu T, Nishitani C, Mitsuzawa H, Ariki S, Takahashi M, Ohtani K, et al. Mannose binding lectin and lung collectins interact with Toll-like receptor 4 and MD-2 by different mechanisms. *Biochim Biophys Acta.* (2009) 1790:1705–10. doi: 10.1016/j.bbagen.2009.10.006
68. Wang M, Chen Y, Zhang Y, Zhang L, Lu X, Chen Z. Mannan-binding lectin directly interacts with Toll-like receptor 4 and suppresses lipopolysaccharide-induced inflammatory cytokine secretion from THP-1 cells. *Cell Mol Immunol.* (2011) 8:265–75. doi: 10.1038/cmi.2011.1
69. Dobo J, Harmat V, Beinrohr L, Sebestyen E, Zavodszky P, Gal P. MASP-1, a promiscuous complement protease: structure of its catalytic region reveals the basis of its broad specificity. *J Immunol.* (2009) 183:1207–14. doi: 10.4049/jimmunol.0901141
70. Trolldborg A, Hansen A, Hansen SW, Jensenius JC, Stengaard-Pedersen K, Thiel S. Lectin complement pathway proteins in healthy individuals. *Clin Exp Immunol.* (2017) 188:138–47. doi: 10.1111/cei.12909
71. Banda NK, Acharya S, Scheinman RI, Mehta G, Coulombe M, Takahashi M, et al. Mannan-binding lectin-associated serine protease 1/3 cleavage of pro-factor D into factor D *in vivo* and attenuation of collagen antibody-induced arthritis through their targeted inhibition by RNA interference-mediated gene silencing. *J Immunol.* (2016) 197:3680–94. doi: 10.4049/jimmunol.1600719
72. Skjoedt MO, Hummelshoj T, Palarasah Y, Honore C, Koch C, Skjodt K, et al. A novel mannose-binding lectin/ficolin-associated protein is highly expressed

- in heart and skeletal muscle tissues and inhibits complement activation. *J Biol Chem.* (2010) 285:8234–43. doi: 10.1074/jbc.M109.065805
73. Harboe M, Mollnes TE. The alternative complement pathway revisited. *J Cell Mol Med.* (2008) 12:1074–84. doi: 10.1111/j.1582-4934.2008.00350.x
 74. Borodovsky A, Yucius K, Sprague A, Banda NK, Holers VM, Vaishnav A, et al. Aln-CC5, an investigational RNAi therapeutic targeting C5 for complement inhibition. *Blood.* (2014) 124:1606. doi: 10.1182/blood.V124.21.1606.1606
 75. Schwaeble WJ, Lynch NJ, Clark JE, Marber M, Samani NJ, Ali YM, et al. Targeting of mannan-binding lectin-associated serine protease-2 confers protection from myocardial and gastrointestinal ischemia/reperfusion injury. *Proc Natl Acad Sci USA.* (2011) 108:7523–8. doi: 10.1073/pnas.1101748108
 76. Li Y, Zou W, Brestoff JR, Rohatgi N, Wu X, Atkinson JP, et al. Fat-produced adiponectin regulates inflammatory arthritis. *Cell Rep.* (2019) 27:2809–16 doi: 10.1016/j.celrep.2019.05.032
 77. Roos A, Rastaldi MP, Calvaresi N, Oortwijn BD, Schlagwein N, van Gijlswijk-Janssen DJ, et al. Glomerular activation of the lectin pathway of complement in IgA nephropathy is associated with more severe renal disease. *J Am Soc Nephrol.* (2006) 17:1724–34. doi: 10.1681/ASN.2005090923
 78. Kasanmoentalib ES, Valls Seron M, Ferwerda B, Tanck MW, Zwinderman AH, Baas F, et al. Mannose-binding lectin-associated serine protease

2 (MASP-2) contributes to poor disease outcome in humans and mice with pneumococcal meningitis. *J Neuroinflammation.* (2017) 14:2. doi: 10.1186/s12974-016-0770-9

Conflict of Interest: The authors declare that this study received funding from Alnylam Pharmaceuticals Inc. as a contract to NB. The funder had the following involvement with the study: synthesizing and conjugating duplexes of MASP-1 and MASP-2 with GalNAc. NB is seeking patent protection to use these conjugates for the treatment of rheumatoid arthritis and other complement mediated diseases.

The remaining authors declare that the research was conducted in the absence of any commercial or financial relationships that could be construed as a potential conflict of interest.

Copyright © 2020 Holers, Borodovsky, Scheinman, Ho, Ramirez, Dobó, Gál, Lindenberg, Hansen, Desai, Pihl, Thiel and Banda. This is an open-access article distributed under the terms of the Creative Commons Attribution License (CC BY). The use, distribution or reproduction in other forums is permitted, provided the original author(s) and the copyright owner(s) are credited and that the original publication in this journal is cited, in accordance with accepted academic practice. No use, distribution or reproduction is permitted which does not comply with these terms.