



Systemic β -Adrenergic Receptor Activation Augments the *ex vivo* Expansion and Anti-Tumor Activity of $V\gamma 9V\delta 2$ T-Cells

Forrest L. Baker^{1,2,3}, Austin B. Bigley¹, Nadia H. Agha¹, Charles R. Pedlar⁴, Daniel P. O'Connor¹, Richard A. Bond⁵, Catherine M. Bollard⁶, Emmanuel Katsanis^{3,7} and Richard J. Simpson^{1,2,3,7*}

¹ Laboratory of Integrated Physiology, Department of Health and Human Performance, University of Houston, Houston, TX, United States, ² Department of Nutritional Sciences, University of Arizona, Tucson, AZ, United States, ³ Department of Pediatrics, University of Arizona, Tucson, AZ, United States, ⁴ School of Sport, Health and Applied Science, St. Mary's University, London, United Kingdom, ⁵ Department of Pharmacological and Pharmaceutical Sciences, University of Houston, Houston, TX, United States, ⁶ Center for Cancer and Immunology Research, Children's National Health System and the George Washington University, Washington, DC, United States, ⁷ Department of Immunobiology, University of Arizona, Tucson, AZ, United States

OPEN ACCESS

Edited by:

Dieter Kabelitz,
University of Kiel, Germany

Reviewed by:

Karin Schillbach,
University of Tübingen, Germany
Serena Meraviglia,
University of Palermo, Italy

*Correspondence:

Richard J. Simpson
rjsimpson@email.arizona.edu

Specialty section:

This article was submitted to
T Cell Biology,
a section of the journal
Frontiers in Immunology

Received: 11 September 2019

Accepted: 17 December 2019

Published: 24 January 2020

Citation:

Baker FL, Bigley AB, Agha NH, Pedlar CR, O'Connor DP, Bond RA, Bollard CM, Katsanis E and Simpson RJ (2020) Systemic β -Adrenergic Receptor Activation Augments the *ex vivo* Expansion and Anti-Tumor Activity of $V\gamma 9V\delta 2$ T-Cells. *Front. Immunol.* 10:3082. doi: 10.3389/fimmu.2019.03082

TCR-gamma delta ($\gamma\delta$) T-cells are considered important players in the graft-vs.-tumor effect following allogeneic hematopoietic cell transplantation (alloHCT) and have emerged as candidates for adoptive transfer immunotherapy in the treatment of both solid and hematological tumors. Systemic β -adrenergic receptor (β -AR) activation has been shown to mobilize TCR- $\gamma\delta$ T-cells to the blood, potentially serving as an adjuvant for alloHCT and TCR- $\gamma\delta$ T-cell therapy. We investigated if systemic β -AR activation, using acute dynamic exercise as an experimental model, can increase the mobilization, *ex vivo* expansion, and anti-tumor activity of TCR- $\gamma\delta$ T-cells isolated from the blood of healthy humans. We also sought to investigate the β -AR subtypes involved, by administering a preferential β_1 -AR antagonist (bisoprolol) and a non-preferential $\beta_1 + \beta_2$ -AR antagonist (nadolol) prior to exercise as part of a randomized placebo controlled cross-over experiment. We found that exercise mobilized TCR- $\gamma\delta$ cells to blood and augmented their *ex vivo* expansion by $\sim 182\%$ compared to resting blood when stimulated with IL-2 and ZOL for 14-days. Exercise also increased the proportion of CD56+, NKG2D+/CD62L-, CD158a/b/e+ and NKG2A- cells among the expanded TCR- $\gamma\delta$ cells, and increased their cytotoxic activity against several tumor target cells (K562, U266, 221.AEH) *in vitro* by 40–60%. Blocking NKG2D on TCR- $\gamma\delta$ cells *in vitro* eliminated the augmented cytotoxic effects of exercise against U266 target cells. Furthermore, administering a $\beta_1 + \beta_2$ -AR (nadolol), but not a β_1 -AR (bisoprolol) antagonist prior to exercise abrogated the exercise-induced enhancement in TCR- $\gamma\delta$ T-cell mobilization and *ex vivo* expansion. Furthermore, nadolol completely abrogated while bisoprolol partially inhibited the exercise-induced increase in the cytotoxic activity of the expanded TCR- $\gamma\delta$ T-cells. We conclude that acute systemic β -AR activation in healthy donors markedly augments the mobilization, *ex vivo* expansion, and anti-tumor activity of

TCR- $\gamma\delta$ T-cells and that some of these effects are due to β_2 -AR signaling and phenotypic shifts that promote a dominant activating signal via NKG2D. These findings highlight β -ARs as potential targets to favorably alter the composition of allogeneic peripheral blood stem cell grafts and improve the potency of TCR- $\gamma\delta$ T-cell immune cell therapeutics.

Keywords: exercise immunology, beta-blockers, gamma-delta t-cells, exercise, adoptive transfer immunotherapy

INTRODUCTION

TCR- $\gamma\delta$ T-cells comprise 1–5% of the total peripheral blood T-cell pool and predominantly recognize non-classical MHC class I molecules and unconventional antigens such as phosphorylated microbial metabolites and lipids (1). They share properties with NK-cells in that they are capable of killing malignant cells in a non-MHC-restricted manner (2, 3) and have emerged as important players in allogeneic hematopoietic cell transplantation (alloHCT) and immune cell therapy. Prospective studies have shown that the magnitude of TCR- $\gamma\delta$ T-cell reconstitution after alloHCT is inversely associated with the incidence of infection (4) and graft-vs.-host disease (GvHD) (5), and is positively associated with leukemia-free and event-free survival (6). The identification of TCR- $\gamma\delta$ T-cells as non-alloreactive lymphocytes with potent anti-viral and anti-tumor properties has also seen TCR- $\gamma\delta$ T-cells emerge as promising candidates for immunotherapy. The adoptive transfer of *ex vivo* expanded TCR- $\gamma\delta$ T-cells has been used successfully to evoke graft- vs.-tumor (GvT) effects against liquid cancers (after alloHCT) such as leukemias and multiple myeloma, and against solid tumors such as renal cell carcinoma, melanoma, and lung cancer (7).

The most widely used method for activating and expanding TCR- $\gamma\delta$ T-cells *in vivo* and *ex vivo* is through stimulation with IL-2 and aminobisphosphonates, such as Zoledronate, which preferentially expands the V γ 9V δ 2 subtype (8). However, post-HCT ZOL+IL-2 therapy fails to expand TCR- $\gamma\delta$ cells *in vivo* to levels associated with increased survival in ~58% of alloHCT patients (9), while the *ex vivo* expansion of V γ 9V δ 2 with ZOL+IL-2 for adoptive transfer therapy is sometimes unsuccessful due to low numbers of TCR- $\gamma\delta$ T-cells in peripheral blood (10). It is important, therefore, to find new ways of mobilizing TCR- $\gamma\delta$ T-cells to enrich peripheral blood hematopoietic stem cell grafts prior to transplant, and also to augment TCR- $\gamma\delta$ responses to ZOL+IL-2 both *in vivo* and *ex vivo* (9, 11).

One potential target to increase TCR- $\gamma\delta$ T-cell mobilization and expansion is the β -adrenergic receptor (β -AR). Indeed, models of systemic β -AR activation in humans such as dynamic exercise, psychosocial stress, and β -agonist (isoproterenol) infusion have been shown to mobilize large numbers of TCR- $\gamma\delta$ T-cells to peripheral blood (12–14). While the β -AR could serve as a therapeutic target to increase the proportion of TCR- $\gamma\delta$ T-cells in peripheral blood stem cell grafts (e.g., by administering a β -AR agonist to G-CSF mobilized donors), it is not known if systemic β -AR activation will alter the responsiveness of TCR- $\gamma\delta$ T-cells to ZOL+IL-2 *ex vivo* or alter the ability of the expanded

cells to recognize and kill tumor targets. Moreover, the β -AR subtype (β_1 vs. β_2) responsible for their mobilization to the blood and potential augmented expansion and anti-tumor activity is not known.

The aim of this study was to determine if systemic β -AR activation, using acute dynamic exercise as an experimental model, can increase the mobilization, *ex vivo* expansion, and anti-tumor activity of TCR- $\gamma\delta$ T-cells isolated from the blood of healthy humans. We also sought to determine the β -AR subtypes involved, by administering a preferential β_1 -AR antagonist (bisoprolol) and a non-preferential $\beta_1 + \beta_2$ -AR antagonist (nadolol) prior to exercise in a randomized placebo controlled cross-over experiment. We show for the first time that systemic β -AR activation *in vivo* augments the mobilization, *ex vivo* expansion, and anti-tumor activity of TCR- $\gamma\delta$ T-cells, and that some of these effects are largely mediated by β_2 -AR signaling and exercise-induced phenotypic shifts that promote a dominant activating signal via NKG2D.

METHODS

Participants

Fourteen (2 females) healthy cyclists (height: 176.44 ± 2.85 cm, body mass: 77.84 ± 6.91 kg; age: 29.9 ± 6.1 years) volunteered for the first part of this study (Part 1). Participants were excluded if they regularly used any immune modulating medications or tobacco products within the last 6-months, had diagnosed asthma or symptoms of undiagnosed asthma, or had elevated blood pressure, fasting glucose, or fasting cholesterol above normal limits. Participants were required to participate in at least 1–3 h of vigorous exercise per week, corresponding to a score of 5–7 on the Jackson et al. Physical-Activity Rating scale (15). All participants were required to abstain from caffeine consumption and vigorous exercise for 24 h prior to each visit and to arrive at the laboratory following an overnight (8–12 h) fast having consumed only water during this time. A sub-group ($n = 6$; 2 females) of the participants (height: 173.79 ± 9.46 cm, body mass: 72.48 ± 7.84 kg; age: 27.2 ± 3.7 years) also volunteered for the second part of the study (Part 2), which involved taking orally administered β -blockers or placebo prior to exercise. The physiological responses to exercise in the Part 1 group and the Part 2 subgroup are shown in **Table 1**. All experimental procedures were performed at the Laboratory of Integrated Physiology at the University of Houston and all exercise tests were performed between 07:00 and 10:00. Each participant provided written informed consent and the Committee for the Protection of Human Participants (CPHS) at the University of Houston approved the study.

TABLE 1 | Exercise performance and physiological measures of the participants in Part 1 ($n = 14$) and Part 2 ($n = 6$).

	Part 1 ($n = 14$)	Part 2 ($n = 6$)			Trial F (p -value)
		Placebo	Bisoprolol	Nadolol	
Cycling power (watts)	170.71 \pm 43.54	150 \pm 51.67	150 \pm 51.67	150 \pm 51.67	ND
Heart rate (bpm)	162.8 \pm 11.2	164.5 \pm 4.72	127.5 \pm 10.84*	120.5 \pm 8.22*	99.954 ($p < 0.001$)
Systolic blood pressure (mmHg)	ND	166.7 \pm 10.88	141.33 \pm 5.54*	137.33 \pm 8.52*	63.801 ($p < 0.001$)
Diastolic blood pressure (mmHg)	ND	73 \pm 7.21	72.33 \pm 5.79	73.5 \pm 7.48	0.114 ($p = 0.893$)
Lactate (mM)	3.28 \pm 1.47	2.27 \pm 0.63	2.67 \pm 0.88	2.52 \pm 0.73	1.534 ($p = 0.255$)
VO ₂ (mL/kg/min)	ND	33.14 \pm 10.96	34.8 \pm 9.87	35.15 \pm 9.15	0.807 ($p = 0.469$)
VE (L/min)	ND	64.72 \pm 21.6	72.47 \pm 21.2	71.27 \pm 22.8	3.567 ($p = 0.064$)
RPE (6–20 Borg Scale)	14.5 \pm 1.601	13.83 \pm 1.6	15 \pm 1.67	15.5 \pm 1.87*	6.676 ($p = 0.011$)

Measures of heart rate, oxygen uptake (VO₂), and ventilation (VE) were averaged during the last 5 min of exercise, while rating of perceived exertion (RPE), capillary blood lactate concentration, and blood pressure were recorded immediately prior to exercise cessation. Data are mean \pm SD. ND, not determined. Main effects of trial are reported for the Part 2 participants. Statistical differences from placebo are indicated by * $p < 0.05$.

Experimental Design

The individual blood lactate threshold (BLT) was determined for each participant using a discontinuous graded exercise protocol we have previously described (16). Participants used either their personal road bike mounted to an indoor cycling ergometer (Computrainer, RacerMate Inc., Seattle, W.A.) or a stationary ergometer provided by the laboratory (Velotron, RacerMate Inc.). For the main exercise trial (Part 1), participants completed a 30-min bout of steady state cycling at a power output corresponding to +10 to +15% of their breakpoint BLT (17). Blood was collected before exercise (Pre-Ex), immediately upon exercise cessation (Post-Ex), and 1 h after exercise completion (1 h-Post). Participants who volunteered for the Part 2 component were asked to visit the laboratory on 5 separate occasions at the same time of day with a period of 7-days interspersed between visits. Participants performed a steady state bout of cycling exercise at a power output corresponding to +10% of the individual BLT 3 h after ingesting: (1) 10 mg bisoprolol (preferential β_1 -AR antagonist), (2) 80 mg nadolol (non-preferential β_1 + β_2 +AR antagonist), or (3) a placebo. Blood samples were collected immediately prior to drug/placebo ingestion (baseline), 3 h later under resting conditions (Pre-Ex), immediately upon cessation of exercise (Post-Ex), and 1 h after exercise completion (1 h Post-Ex). The tablets were administered in a double-blind fashion and the trials were performed using a block randomization design.

Blood Sampling and Exercise Measures

All intravenous blood samples were collected from an antecubital vein using standard phlebotomy (BD Vacutainer Safety-Lok) and vacutainer tubes spray-coated with sodium-heparin or K₂EDTA (BD Vacutainer Safety-Lok). The K₂EDTA tube was used to determine complete blood counts using an automated hematology analyzer (Mindray BC-2800, Nanshan, Shenzhen, PR China) and the sodium-heparin tubes for the isolation of peripheral blood mononuclear cells (PBMCs), immunophenotyping, and *ex vivo* expansion of TCR- $\gamma\delta$ T-cells. All resting blood samples were collected from the participant following a 10-min period of seated rest. Participants completed a

standardized 10-min warm up (<-10% BLT) prior to engaging in the prescribed exercise intensity and were instructed to maintain a consistent pedaling cadence across all exercise trials. The Post-Ex blood sample was collected within 3 min of exercise cessation to ensure the mobilized TCR- $\gamma\delta$ T-cells were captured (18). Heart rate and respiratory gas exchange were monitored at rest and continuously during exercise by telemetry and indirect calorimetry (Quark CPET, COSMED, Pavona di Albano Laziale, Italy). Ratings of perceived exertion (RPE; Borg Scale) were recorded at rest and every 5-min during exercise. Capillary blood lactate concentration (P-GM7 Micro-Stat Analyzer, Analox instruments Ltd., London, UK) and blood pressure (Part 2 only) were determined at rest and every 10-min during exercise.

Expansion of TCR- $\gamma\delta$ T-Cells

The TCR- $\gamma\delta$ T-cells expansion protocol was performed as previously described (8). Briefly, PBMCs were isolated from 10 mL of whole blood collected at Pre-Ex, Post-Ex, and 1 h-Post by density gradient centrifugation (Histopaque-1077, Sigma-Aldrich, St. Louis, MO, USA). PBMCs were counted by flow cytometry and seeded at a concentration of 1×10^6 cells/mL in a 24-well plate with culture media consisting of 100 IU/mL IL-2 and 5 μ M of ZOL (Sigma-Aldrich,) in RPMI-1640 (Sigma-Aldrich) with 10% FBS (Sigma-Aldrich) and 1% penicillin streptomycin (Sigma-Aldrich). Media was changed every 3–4 days, with fresh culture media containing 100 IU/mL of IL-2 only (without ZOL). Cells were harvested after 14-days to determine number, phenotype, and function by up to 8-color flow cytometry (MACSQuant 10; Miltenyi Biotec Inc. Bergisch Gladbach, Germany). Expanded TCR- $\gamma\delta$ T-cells were enumerated and 2×10^5 cells were labeled with appropriate combinations of the following antibodies, all purchased from eBioscience Inc. (San Diego, CA, USA) unless otherwise stated: CD8-FITC, V δ 2-FITC (BioLegend, San Diego, CA, USA), NKG2C Alexa Flour[®] 488 (R&D Systems, Minneapolis, MN, USA), CD62L-FITC, CD28-FITC, KLRG1-FITC, CD45RA-FITC, CD3-FITC, TCR- $\gamma\delta$ -PE, CD4-PE, CD3-PE, NKG2A-PE (Beckman Coulter, Brea, CA, USA), NKG2D-PE (R&D Systems), CD57-PE, CD27-PE, CD158a-PE (Beckman Coulter), CD158b-PE

(Beckman Coulter), CD18e-PE (Beckman Coulter), CD4-PerCP-Cyanine5.5, CD56-PE-Cyanin5.5, CD8-PerCP-Cyanine5.5, PD-1-PerCP-eFluor-710, TCR- $\gamma\delta$ -PerCP (BioLegend), CD3-APC, CD56-APC, V δ 1-APC (Miltenyi), NKp30-APC (Biolegend), NKG2A-APC (Beckman Coulter).

TCR- $\gamma\delta$ T-Cell Cytotoxicity Assay With and Without NKG2D Blockade

The HLA-deficient leukemia cell line K562 (ATCC: CCL-243), the HLA-expressing (group 1 HLA-C *0304,*0702) multiple myeloma cell line U266 (ATCC:TIB-196), and the 221.AEH (a HLA-E+ transfectant derived from the 721.221 lymphoma cell line) (19) were maintained as previously described and used as target cells for the cytotoxicity assay (16). On the day of the TCR- $\gamma\delta$ T-cells cytotoxicity assay, 3×10^6 target cells were removed and labeled with anti-CD71-FITC and co-cultured with the expanded TCR- $\gamma\delta$ T-cells at 0:1 (determine spontaneous death), 1:1, 5:1, 10:1, and 20:1 TCR- $\gamma\delta$ T-cell: target cell ratios. All assays were conducted in the presence of RPMI-1640 with 10% FBS and 1% penicillin streptomycin and incubated at 37°C for 4 h in a humidified CO₂ incubator. Flow cytometry was used to determine TCR- $\gamma\delta$ T-cell cytotoxic activity following similar methods we have described previously for NK-cells (20). TCR- $\gamma\delta$ T-cell cytotoxic activity was calculated as specific lysis (% total lysis – % spontaneous death) and lytic index (number of dead target cells per 100,000 TCR- $\gamma\delta$ T-cells). To block activation of TCR- $\gamma\delta$ T-cells through the NKG2D receptor, TCR- $\gamma\delta$ T-cells were incubated with either media alone, an REA isotype control, or an anti-NKG2D monoclonal antibody (REA, clone REA797) for 30 min prior to performing the TCR- $\gamma\delta$ T-cell cytotoxicity assay. Finally, NKG2D ligands were measured on K562 and U266 cells lines using monoclonal antibodies against the following targets: MICA/MICB (Miltenyi), ULBP-2/5/6 (R&D Systems), ULBP-1 (R&D Systems), and ULBP-3 (R&D Systems).

Statistical Analysis

All statistical analyses were completed using SPSS (v24.0, IBM, Chicago, IL). Maximum Likelihood, linear mixed models (LMM) were used to analyze the numeric changes in expansions, cytotoxicity, and phenotypes. The LMM allowed for modeling the dependencies within persons from having multiple measures per person. For Part 1, the model included main effects for exercise time (Pre-Ex, Post-Ex, and 1 h-Post). The effect of NKG2D blockade on TCR- $\gamma\delta$ T-cell killing against U266 and K562 was determined by two-way repeated measures ANOVA that included main effects of exercise time (pre-ex and post-ex) and condition (media alone, isotype control, and anti-NKG2D). The model for Part 2 included main effects for exercise time and trial (placebo, bisoprolol, and nadolol), as well as an interaction effect for exercise time and trial. Planned contrasts were used *a priori* to determine overall time effects within each trial (placebo, bisoprolol, or nadolol), the location of the significant time effects (Pre-Ex, Post-Ex, and 1 h-Post), and significant differences across the three trials at each specified time point. All data are represented as the mean \pm SD unless otherwise stated and significance was set at $p < 0.05$.

RESULTS

Acute Exercise Mobilizes TCR- $\gamma\delta$ T-Cells in a β ₂-AR Dependent Manner

First, we examined the effect of exercise on the mobilization of TCR- $\gamma\delta$ T-cells to the peripheral blood compartment (Table 2 and Figure 1A). The absolute number ($p < 0.001$; Table 2) and percentage ($p < 0.001$; Figure 1A) of TCR- $\gamma\delta$ T-cells was elevated in blood Post-Ex compared to Pre-Ex and 1 h-Post ($p < 0.01$). When examining the effects of bisoprolol and nadolol on the mobilization of TCR- $\gamma\delta$ T-cells after exercise relative to placebo, a main effect of exercise time ($p < 0.001$) and an interaction between exercise time and trial was found for both the absolute number and percentage of TCR- $\gamma\delta$ T-cells among CD3+ T-cells ($p < 0.01$; Table 2 and Figures 2A,B). Planned contrasts showed that nadolol but not bisoprolol blunted the effects of exercise on TCR- $\gamma\delta$ T-cell mobilization to the blood, indicating the mobilization of TCR- $\gamma\delta$ T-cells is dependent on β ₂-AR signaling. Neither nadolol nor bisoprolol inhibited the exercise-induced mobilization of total lymphocytes, total CD3+ T-cells, or CD4+ T-cells. Significant time \times trial interactions were found for the mobilization of CD8+ T-cells, CD3+/CD4-/CD8- T-cells, and NK-cells with the effect sizes for time were lowest in the nadolol trial (Table 2).

Acute Exercise Augments the *ex vivo* Expansion of TCR- $\gamma\delta$ T-Cells and Is Dependent on β ₂-AR Signaling

We examined the effect of exercise on the expansion of TCR- $\gamma\delta$ T-cells (Figure 1). As expected, a greater number of TCR- $\gamma\delta$ T-cells were present in PBMCs isolated Post-EX compared to both Pre-Ex and 1 h Post-Ex PBMCs ($p < 0.001$; Figure 1B). Following 14-day's expansion with ZOL+IL-2, significantly more TCR- $\gamma\delta$ T-cells were generated from the PBMCs collected Post-Ex compared to PBMCs collected at baseline/Pre-Ex and 1 h-Post ($p < 0.001$; Figure 1B). Also, PBMCs collected at 1 h-Post generated significantly more TCR- $\gamma\delta$ T-cells than PBMCs collected at baseline/Pre-Ex ($p < 0.05$; Figure 1B). The number of TCR- $\gamma\delta$ T-cells generated after 14-days from each TCR- $\gamma\delta$ T-cell stimulated on Day-0 was highest from PBMCs collected at 1 h-Post compared to Pre-Ex and Post-Ex ($p < 0.01$; Figure 1C). The composition of the expanded TCR- $\gamma\delta$ T-cells was primarily V γ 9V δ 2 T-cells (>93%) and exercise had no effect on the percentage and differentiation of V γ 9V δ 2 T-cells among the expanded cell products ($p > 0.05$; Figures 1D,E). When examining the effects of bisoprolol and nadolol relative to placebo on the expansion of TCR- $\gamma\delta$ T-cells after exercise (Figure 2), a main effect of exercise time ($p < 0.001$) and an interaction between exercise time and trial was found ($p = 0.018$; Figures 2C,E). Planned contrasts showed that nadolol blunted the exercise-induced increase in TCR- $\gamma\delta$ T-cell expansion but bisoprolol did not (Figure 2E). Neither nadolol nor bisoprolol affected the percentage of CD3+ T-cells, total TCR- $\gamma\delta$ T-cells or V γ 9V δ 2 T-cells among the expanded cell products (Figures 2F,G).

TABLE 2 | The total number (cells/ μ L) of lymphocytes, CD3+ T-cells, CD4+ T-cells, CD8+ T-cells, CD4-/CD8- T-cells, V γ 9V δ 2 T-cells, and NK-cells (CD3-CD56+) before, immediately after, and 1 h after exercise for the participants in Part 1 ($n = 14$) and Part 2 ($n = 6$).

		Baseline	Pre-Ex	Post-Ex	1 h-Post	Time effect F (p-value)	Main effects		
							Time	Trial	Interaction
LYMPHOCYTES									
Part 1		ND	1617.9 \pm 245.4	3135.7 \pm 664.9 ^{#~}	1641.7 \pm 365.5	F = 80.37 (<0.001)			
Part 2	Placebo	1816.7 \pm 625.03	1700 \pm 327.1	3025 \pm 479.3 ^{#~}	1810 \pm 386.3	F = 16.71 (<0.001)	F = 43.95	F = 0.45	F = 0.76
	Bisoprolol	1791.7 \pm 442.1	2016.7 \pm 388.2	3183.3 \pm 677.3 ^{#~}	1760 \pm 451.9	F = 18.99 (<0.001)	$p < 0.001$	$p = 0.643$	$p = 0.602$
	Nadolol	1675 \pm 448.1	1808.3 \pm 327.8	2716.7 \pm 805.4 ^{#~}	1790 \pm 449.2	F = 9.77 (<0.001)			
Trial effect:		F = 0.16 $p = 0.851$	F = 0.73 $p = 0.485$	F = 1.6 $p = 0.213$	F = 0.03 $p = 0.971$				
CD3+ T-CELLS									
Part 1		ND	1066.2 \pm 224.2	1785.5 \pm 448.6 ^{#~}	1199 \pm 263.3*	F = 39.62 (<0.001)			
Part 2	Placebo	1306.9 \pm 483.4	1188.5 \pm 225.6	1789.5 \pm 356.8 ^{#~}	1322.3 \pm 274.3*	F = 11.86 (<0.001)	F = 28.84	F = 0.21	F = 1.21
	Bisoprolol	1313.1 \pm 444.9	1461 \pm 361.2	1908.5 \pm 476.2 ^{#~}	1349.8 \pm 412.8*	F = 13.18 (<0.001)	$p < 0.001$	$p = 0.816$	$p = 0.316$
	Nadolol	1216.8 \pm 421.9	1332.3 \pm 326.2	1666 \pm 442.5 ^{#~}	1355.9 \pm 411.2*	F = 6.23 (0.001)			
Trial effect:		F = 0.14 $p = 0.872$	F = 0.88 $p = 0.426$	F = 0.7 $p = 0.507$	F = 0.02 $p = 0.976$				
CD4+ T-CELLS									
Part 1		ND	646.9 \pm 169	1026.1 \pm 325 ^{#~}	760.2 \pm 222.5	F = 25.94 (<0.001)			
Part 2	Placebo	826.5 \pm 371.5	722 \pm 188.5	989.7 \pm 265.2 [#]	847.7 \pm 240.7	F = 5.48 (0.002)	F = 11.8	F = 0.04	F = 1.02
	Bisoprolol	832.8 \pm 374.2	889.3 \pm 237	1001.4 \pm 203 [~]	850.9 \pm 285.6	F = 3.17 (0.032)	$p < 0.001$	$p = 0.959$	$p = 0.424$
	Nadolol	767.9 \pm 330.1	823.9 \pm 247.4	1014.4 \pm 359.5 [#]	841.7 \pm 317.7	F = 5.17 (0.003)			
Trial effect:		F = 0.11 $p = 0.895$	F = 0.62 $p = 0.549$	F = 0.01 $p = 0.987$	F = 0.01 $p = 0.987$				
CD8+ T-CELLS									
Part 1		ND	338.1 \pm 117.7	582.9 \pm 186 ^{#~}	358.8 \pm 129	F = 36.8 (<0.001)			
Part 2	Placebo	385.6 \pm 178.7	367 \pm 148.6	588.2 \pm 186.4 ^{#~}	373.7 \pm 165	F = 11.42 (<0.001)	F = 31.64	F = 0.24	F = 2.35
	Bisoprolol	385.7 \pm 171.8	460.3 \pm 257.3	694.8 \pm 379.6 ^{#~}	405.7 \pm 228.3	F = 21.19 (<0.001)	$p < 0.001$	$p = 0.783$	$p = 0.045$
	Nadolol	359.2 \pm 146.3	402.2 \pm 163.4	500.8 \pm 153.9 ^{#~}	410.4 \pm 181.6	F = 3.720 (0.017)			
Trial effect:		F = 0.04 $p = 0.960$	F = 0.387 $p = 0.683$	F = 1.644 $p = 0.215$	F = 0.03 $p = 0.974$				
CD4-/CD8- T-CELLS									
Part 1		ND	77.4 \pm 37.3	166.9 \pm 85.6 ^{#~}	75.2 \pm 35.6	F = 26.95 (<0.001)			
Part 2	Placebo	91.3 \pm 47.2	95.8 \pm 43.5	205.1 \pm 100.8 ^{#~}	95.6 \pm 36.7	F = 21.85 (<0.001)	F = 43.33	F = 0.17	F = 2.43
	Bisoprolol	90.5 \pm 52.9	106.3 \pm 60.7	207.2 \pm 69.6 ^{#~}	88.5 \pm 41.7	F = 21.93 (<0.001)	$p < 0.001$	$p = 0.845$	$p = 0.038$
	Nadolol	87 \pm 55.4	101.8 \pm 44.1	145 \pm 59.4*	97.8 \pm 53.8	F = 4.42 (0.008)			
Trial effect:		F = 0.01 $p = 0.989$	F = 0.06 $p = 0.942$	F = 2.71 $p = 0.083$	F = 0.08 $p = 0.920$				
Vγ9Vδ2 T-CELLS									
Part 1		ND	42.8 \pm 32.9	115.6 \pm 67.6 ^{#~}	37.9 \pm 26.1	F = 31.32 (<0.001)			
Part 2	Placebo	57.5 \pm 42	56.5 \pm 38.4	145.6 \pm 80.5 ^{#~} \$	44.9 \pm 24.2	F = 22.36 (<0.001)	F = 36.33	F = 0.43	F = 3.99
	Bisoprolol	58 \pm 49.6	70.3 \pm 61.3	147 \pm 67.3 ^{#~} \$	47.9 \pm 34	F = 20.37 (<0.001)	$p < 0.001$	$p = 0.657$	$p = 0.002$
	Nadolol	52.3 \pm 40.4	56.7 \pm 33.2	79.4 \pm 47	53.3 \pm 32.2	F = 1.58 (0.206)			
Trial effect:		F = 0.03 $p = 0.97$	F = 0.19 $p = 0.829$	F = 4.53 $p = 0.02$	F = 0.07 $p = 0.935$				
CD3-CD56+									
Part 1		ND	185.5 \pm 62.2	746.3 \pm 244.9 ^{#~}	121 \pm 44.3	F = 71.41 (<0.001)			
Part 2	Placebo	151 \pm 66.6	161.6 \pm 64.9	657.2 \pm 312.1 ^{#~} \$	94.2 \pm 24.5	F = 17.23 (<0.001)	F = 37.66	F = 2.21	F = 2.41
	Bisoprolol	152 \pm 53.6	183.4 \pm 75.1	732.5 \pm 433.2 ^{#~} \$	94.1 \pm 28.2	F = 22.01 (<0.001)	$p < 0.001$	$p = 0.141$	$p = 0.040$
	Nadolol	145.2 \pm 51.4	130.3 \pm 49.7	343.7 \pm 252.9 ^{#~}	74.7 \pm 19.8*	F = 3.24 (0.03)			
Trial effect:		F = 0.003 $p = 0.997$	F = 0.16 $p = 0.855$	F = 9.4 $p < 0.001$	F = 0.02 $p = 0.982$				

Baseline blood samples were collected from the part 2 participants prior to drug/placebo administration then again 3 h later immediately prior to exercise onset (Pre-Ex). For the part 2 participants, main effects of time, trial, and time \times trial interaction effects are shown with the planned contrasts for time and trial. Data are mean \pm SD. ND, not determined. Differences from baseline, Pre-Ex, and 1 h post are indicated by *, #, ~, respectively ($p < 0.05$). Differences from the nadolol trial are indicated by \$ ($p < 0.05$).

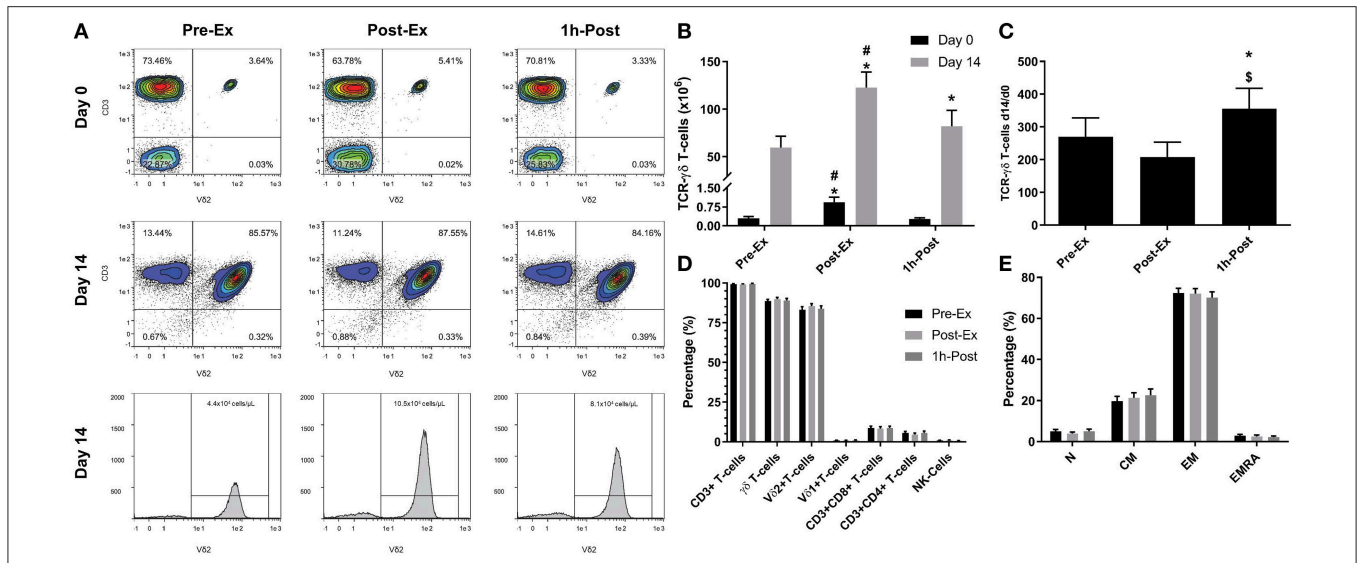


FIGURE 1 | Exercise augments the *ex vivo* expansion of $V\gamma 9\delta 2$ T-cells: **(A)** representative flow cytometry contour plots and histograms showing the effect of exercise on the proportions of $V\gamma 9\delta 2$ T-cells among total PBMCs at Day 0 and after 14-days expansion with ZOL+IL-2. Histogram events are adjusted to reflect the total number of cells isolated per μl of cell culture supernatant. **(B)** The total number of TCR- $\gamma\delta$ cells in 1×10^6 PBMCs isolated before (Pre-Ex), immediately after (Post-Ex), and 1 h after exercise (1 h-Post) at Day 0, and the total number of TCR- $\gamma\delta$ T-cells generated in the expanded cell products after 14-days stimulation with ZOL+IL-2. Significant differences were only determined within expansion period (Day 0 or 14) and not between. **(C)** The number of TCR- $\gamma\delta$ cells generated at Day 14 divided by the number of TCR- $\gamma\delta$ cells in the PBMC fractions at Day 0. **(D)** The cellular composition of the expanded TCR- $\gamma\delta$ T-cell products at Day 14. **(E)** The proportions of naive (N), central memory (CM), effector memory (EM), and CD45RA+ effector memory (EMRA) cells among total TCR- $\gamma\delta$ T-cells. Values are mean \pm SE ($n = 14$). Differences from Pre-Ex, Post-Ex, and 1 h-Post are indicated by *, \$, and #, respectively ($p < 0.05$).

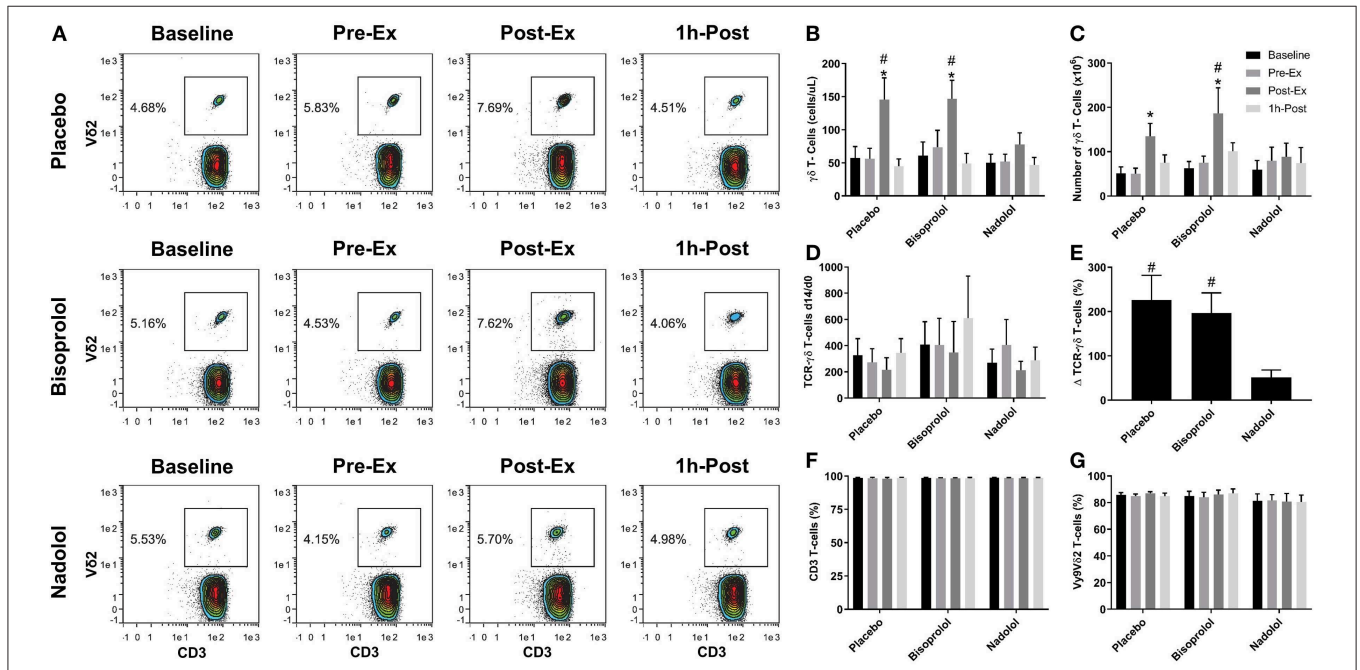


FIGURE 2 | $\beta_1 + \beta_2$ -AR but not β_1 -AR blockade alone inhibits the mobilization and augmented *ex vivo* expansion of $V\gamma 9\delta 2$ T-cells in response to exercise. **(A)** Representative flow cytometry contour plots showing the effects of a $\beta_1 + \beta_2$ -AR antagonist (nadolol) and a β_1 -AR antagonist (bisoprolol) on the mobilization of $V\gamma 9\delta 2$ T-cells with exercise. Values shown are the percentage of all CD3+ T-cells. **(B)** The total numbers of TCR- $\gamma\delta$ T-cells in blood before and after exercise. After 14 days' expansion with ZOL+IL-2, **(C)** the total number, **(D)** the number of TCR- $\gamma\delta$ cells generated at Day 14 divided by the number of TCR- $\gamma\delta$ cells in the PBMC fractions at Day 0 and **(E)**, percentage change in number of TCR- $\gamma\delta$ T-cells expanded Post-Ex relative to baseline. The percentage of **(F)** CD3+ and **(G)** $V\gamma 9V\delta 2$ T-cells among the expanded cell products are shown. Values are mean \pm SE ($n = 6$). Significant difference from Baseline/Pre-Ex/1 h-Post and the nadolol trial indicated by * and #, respectively ($p < 0.05$).

Acute Exercise Drives Expanded TCR- $\gamma\delta$ T-Cells Toward an Activated Phenotype With Anti-Tumor and Tissue Migration Potential

We performed a detailed phenotypic analysis of the expanded TCR- $\gamma\delta$ T-cell products, focusing on the expression of surface markers associated with activation, inhibition, homing, differentiation, and exhaustion (Figure 3). We found that Post-Ex expanded TCR- $\gamma\delta$ T-cells had higher proportions of CD56+ ($p < 0.01$), NKG2D+/CD62L- ($p < 0.01$), CD158b+ ($p < 0.05$), and CD158e+ ($p < 0.05$) and decreased proportions of NKG2A+ ($p < 0.05$), CD62L+ ($p < 0.001$), NKG2D+/CD62L- ($p < 0.01$) compared to Pre-Ex and 1 h-Post expanded TCR- $\gamma\delta$ T-cells (Figure 3A). There was no effect of exercise ($p > 0.05$) on the proportions of TCR- $\gamma\delta$ T-cells expressing PD-1, indicating that the augmenting effects of exercise did not drive the TCR- $\gamma\delta$ T-cell product to exhaustion after 14-days expansion (Figure 3A). Administering nadolol but not bisoprolol prior to exercise inhibited the phenotypic shifts seen in the expanded TCR- $\gamma\delta$ T-cell products, particularly for CD56+ (Figure 3B). Conversely, the proportion of Post-Ex NKG2D+/CD62L- expanded TCR- $\gamma\delta$ T-cells was inhibited by administration of bisoprolol or nadolol prior to exercise (Figure 3B). These results indicate that exercise drives phenotypic changes within the expanded TCR- $\gamma\delta$ T-cell products that are associated with increased cytotoxicity and tissue migration potential in a manner that is also dependent on β_2 -AR signaling.

Acute Exercise Augments the *in vitro* Cytotoxicity of the Expanded TCR- $\gamma\delta$ T-Cell Products in a Manner That Is Dependent on Both β_1 -AR and β_2 -AR Signaling

We examined the function of expanded TCR- $\gamma\delta$ T-cells by determining their *in vitro* cytotoxicity against three different tumor cells lines, K562, U266, and 221.AEH (Figure 4). The TCR- $\gamma\delta$ T-cells expanded Post-Ex had increased cytotoxic activity against all tumor targets compared to TCR- $\gamma\delta$ T-cells expanded at both Pre-Ex and 1 h-Post ($p < 0.01$; Figures 4A–C). This finding held true when data were expressed as specific lysis, lytic index, and total killing capacity (data not shown). The effects of nadolol and bisoprolol on the cytotoxicity of TCR- $\gamma\delta$ T-cells expanded after exercise were assessed for the K562 and U266 cell lines only. Due to the small sample size and large intrasubject variability, these data are expressed as a percentage change in killing capacity of the Post-Ex expanded TCR- $\gamma\delta$ T-cells compared to those expanded Pre-Ex (Figures 4D,E). Compared to placebo, nadolol abrogated the exercise-induced increase in the cytotoxic activity of the expanded TCR- $\gamma\delta$ T-cell products against both the K562 and the U266 cell line. Bisoprolol was found to inhibit the exercise effects on the cytotoxic activity of the expanded TCR- $\gamma\delta$ T-cells, but not to the same extent as nadolol. These findings indicate that TCR- $\gamma\delta$ T-cells expanded immediately after exercise have increased anti-tumor activity compared to TCR- $\gamma\delta$ T-cells expanded at rest and during the

early (1 h-Post) stage of exercise recovery, and that the exercise effects are dependent on both β_1 -AR and β_2 -AR signaling.

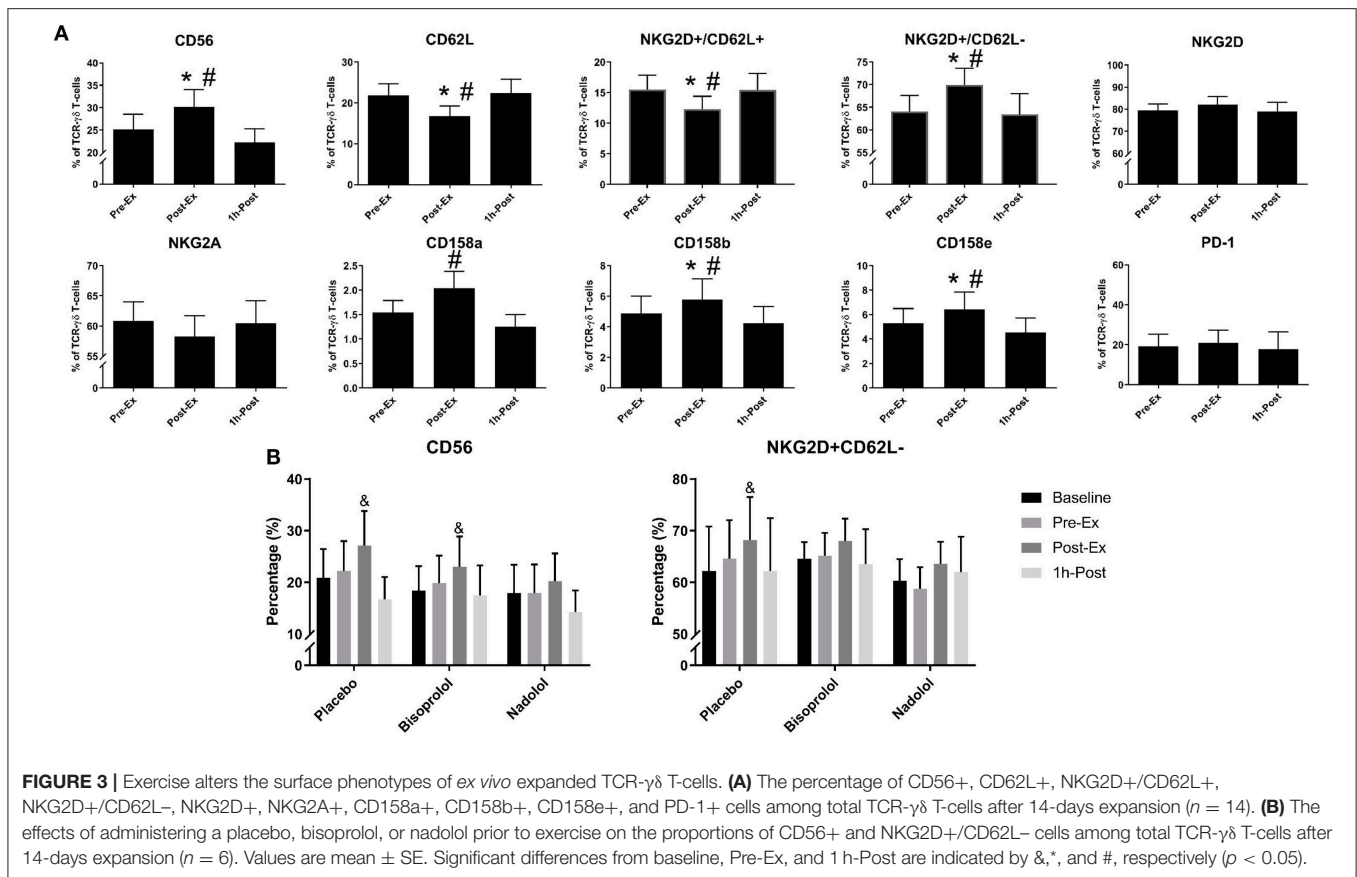
Exercise Increases TCR- $\gamma\delta$ T-Cell Cytotoxic Activity Against U266 Target Cells Through NKG2D Dependent Signaling

A greater proportion of TCR- $\gamma\delta$ T-cells expanded Post-Ex displayed an NKG2D+/CD62L- phenotype compared to those expanded at Pre-Ex. We, therefore, examined the effects of blocking the NKG2D receptor on TCR- $\gamma\delta$ T-cells prior to performing the *in vitro* cytotoxicity assay against U266 and K562 tumor cells. NKG2D blockade on Pre-Ex expanded TCR- $\gamma\delta$ T-cells did not alter cytotoxic activity against U266 cells ($p > 0.05$) but the enhanced cytotoxic effect of TCR- $\gamma\delta$ T-cells expanded Post-Ex was abrogated by NKG2D blockade ($p < 0.05$; Figure 5B). Blocking NKG2D had no impact on the exercise-induced increase in TCR- $\gamma\delta$ T-cell cytotoxicity against K562 tumor cells (data not shown). Tellingly, the U266 cell line had a greater surface expression of the NKG2D ligands MICA/MICB, ULBP-1, and ULBP-3 compared to K562 cells (Figure 5A).

DISCUSSION

TCR- $\gamma\delta$ T-cells have emerged as an important subset of effector lymphocytes in allo-HCT and adoptive transfer immunotherapy due to their ability to attack a wide range of solid and hematological tumors without causing GvHD. However, the low frequency of TCR- $\gamma\delta$ T-cells in the peripheral blood of healthy donors limits their therapeutic potential. We have demonstrated that systemic β -AR activation, using acute dynamic exercise as an experimental model, mobilizes TCR- $\gamma\delta$ T-cells to the peripheral blood and, for the first time here, augments their *ex vivo* expansion and anti-tumor activity. These adjuvant effects of exercise were associated with certain phenotypic shifts and found to be largely dependent on β_2 -AR signaling, as they were abrogated by administering a $\beta_1 + \beta_2$ -AR antagonist (nadolol) but not a β_1 -antagonist (bisoprolol) prior to exercise. These findings highlight the β_2 -AR as a potential therapeutic target to mobilize TCR- $\gamma\delta$ T-cells in healthy alloHCT donors and to also increase the potency of TCR- $\gamma\delta$ T-cell therapeutics.

Prior studies have demonstrated that systemic β -AR activation using either exercise or isoproterenol infusion, increases the number of circulating TCR- $\gamma\delta$ T-cells 2–4-fold (12, 14). We have shown previously that exercise has potent adjuvant effects on the mobilization and *ex vivo* manufacture of viral specific T-cells and were interested to evaluate whether these findings extend to TCR- $\gamma\delta$ T-cells also (21–23). This is particularly pertinent as TCR- $\gamma\delta$ T-cell reconstitution after alloHCT has been associated with improved leukemia free survival and protection against GvHD (4–6). The *ex vivo* manufacture and adoptive transfer of TCR- $\gamma\delta$ T-cells are being applied to elicit GvT effects in alloHCT recipients and in the treatment of solid tumors such as renal cell carcinoma, melanoma, lung cancer, and neuroblastoma (7). We determined that just 30-min of intensity-controlled exercise increased the numbers of TCR- $\gamma\delta$ T-cells in peripheral blood almost 3-fold ($\sim\Delta$ 73 cells/ μ L). This allowed us to manufacture 2-times more TCR- $\gamma\delta$ T-cells



from blood samples collected during exercise compared to rest. Moreover, the TCR- γ δ T-cells expanded after exercise had a greater surface expression of several activating receptors, a lowered expression of inhibitory receptors, and were found to have superior cytolytic activity *in vitro* against various tumor targets than TCR- γ δ T-cells expanded at rest. The limited therapeutic application of TCR- γ δ T-cells to date has been attributed to low circulating numbers in healthy transplant donors (1–5% of blood lymphocytes) (8). This results in low numbers of TCR- γ δ T-cells in peripheral blood stem cell grafts of G-CSF mobilized donors, which could be partially responsible for poor TCR- γ δ T-cell reconstitution in alloHCT patients posttransplant (4, 24). Using systemic β -AR activation to enrich G-CSF mobilized peripheral blood stem cell grafts with TCR- γ δ T-cells could also improve *ex vivo* graft engineering methods such as TCR- $\alpha\beta$ +CD19 depletion (25), which are designed to protect against GvHD and EBV-induced lymphoproliferative disease but retain TCR- γ δ T-cells and NK-cells in the graft to maintain anti-tumor activity. This could help overcome some reported limitations with this method such as graft failure and poor immune reconstitution, which leads to an increased incidence of relapse and infection (26). Moreover, although ZOL+IL-2 has been used to expand TCR- γ δ T-cells (V δ 2 subset) *in vitro* and *in vivo*, TCR- γ δ T-cells respond poorly to ZOL+IL-2 in some patients and donors (8, 10, 27–30). The current findings indicate that systemic β -AR activation is a simple, economical, and effective adjuvant for the potential

enrichment of peripheral blood stem cell grafts with TCR- γ δ T-cells, and also for increasing their responsiveness to exogenous cytokines and phosphoantigens such as ZOL+IL-2. This could be effective, not only for the *ex vivo* manufacture of TCR- γ δ T-cell products shown here, but also for expanding TCR- γ δ T-cells *in vivo* following alloHCT using subcutaneous ZOL+IL-2 injections.

Our finding that the adjuvant effects of exercise are largely dependent on β ₂-AR signaling has important practical applications as it might allow us to further optimize potential pharmaceutical interventions for mobilizing and expanding TCR- γ δ T-cells in healthy donors. Administering a preferential β ₁-AR antagonist (e.g., bisoprolol) prior to exercise or isoproterenol infusion is likely to provide the required β ₂-AR stimulation to mobilize and activate TCR- γ δ T-cells without causing sustained elevations in heart rate and systolic blood pressure, which is predominantly a β ₁-AR mediated effect (31). Indeed, we found that both bisoprolol and nadolol blunted the exercise-induced increases in heart rate and blood pressure but the adjuvant effects of exercise were still apparent in the bisoprolol trial. This finding likely excludes increases in hemodynamic shear stress as a potential mechanism for the adjuvant effects of exercise on TCR- γ δ T-cell mobilization and *ex vivo* expansion. Bisoprolol did, however, blunt the effects of exercise on the cytotoxic capabilities of the expanded TCR- γ δ T-cell product suggesting a role for both β ₁-ARs and β ₂-ARs in improving the function of

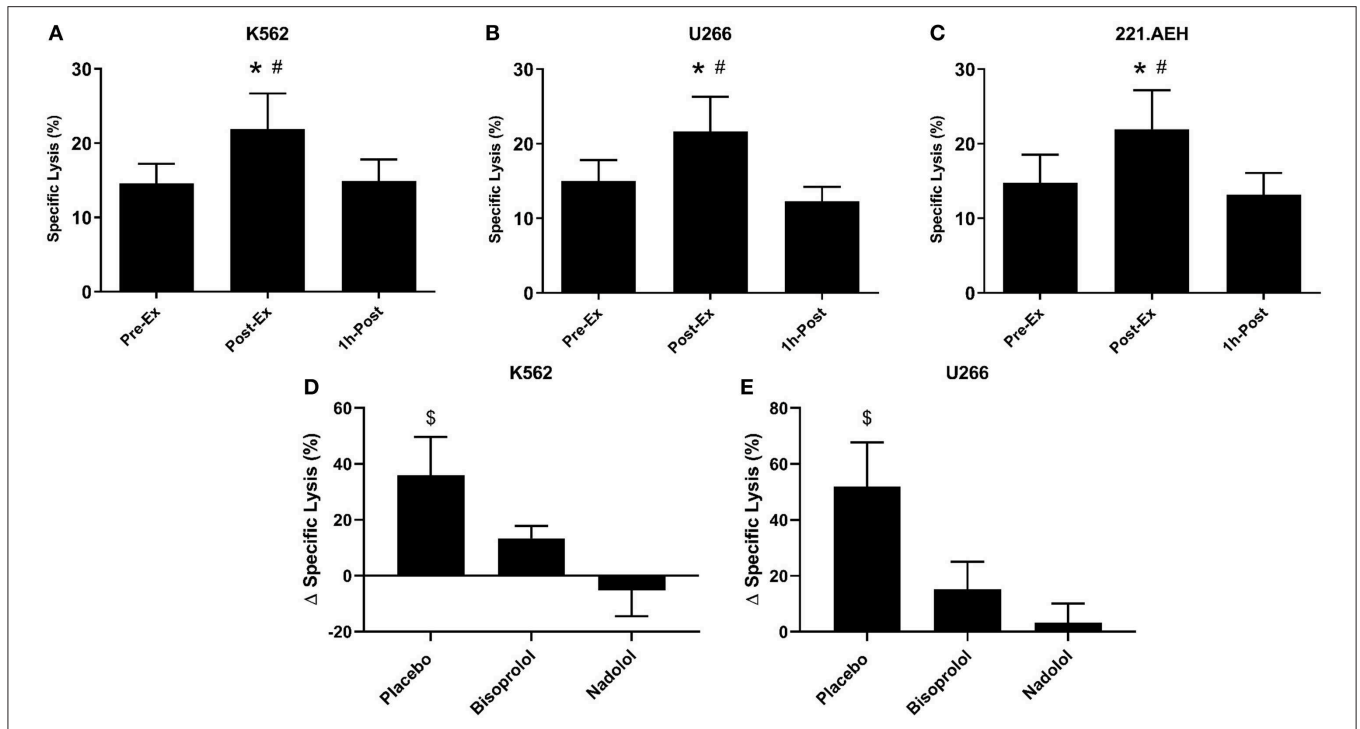


FIGURE 4 | Exercise augments the anti-tumor activity of *ex vivo* expanded TCR- $\gamma\delta$ T-cells in a manner that is dependent on both β_1 and β_2 -AR signaling. The percentage of K562 (A), U266 (B), and 221.AEH (C) target cells killed by the expanded TCR- $\gamma\delta$ T-cells at an E:T ratio of 10:1 following 14-days expansion with ZOL+IL-2 ($n = 14$). The effects of placebo, bisoprolol, and nadolol on the exercise-induced changes in specific lysis against K562 (D) and U266 (E) target cells following *ex vivo* expansion ($n = 6$). Values are mean \pm SE. Differences from Pre-Ex are indicated by * and differences from 1 h-Post are indicated by #, $p < 0.05$. Differences from the nadolol trial are indicated by \$, $p < 0.05$.

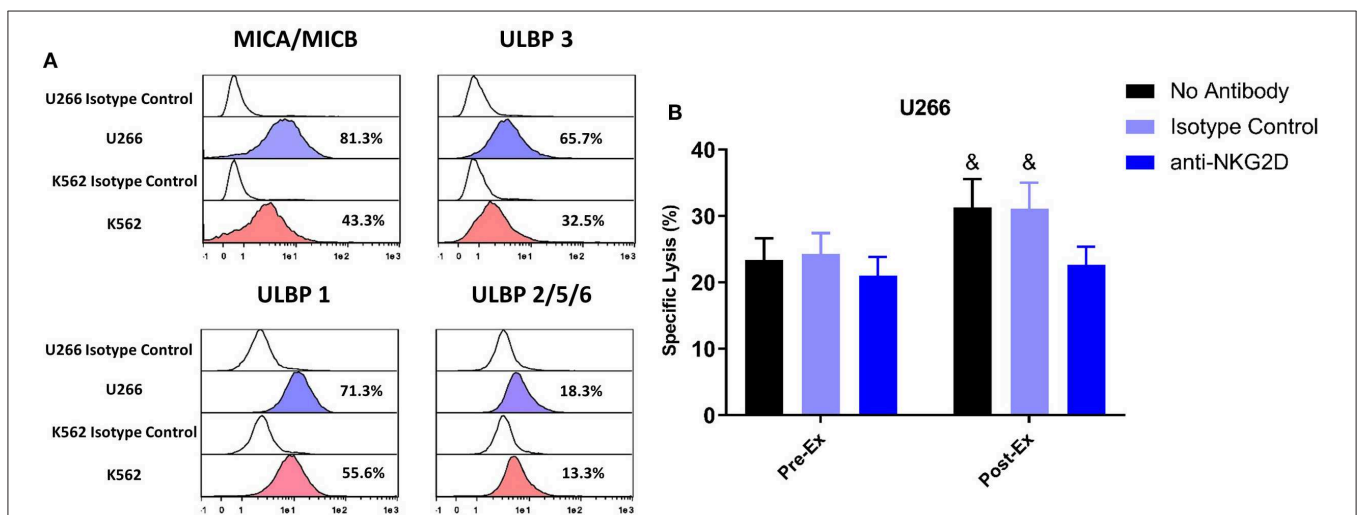


FIGURE 5 | Enhanced cytotoxic effect of exercise expanded TCR- $\gamma\delta$ T-cells against U266 cells is dependent on NKG2D signaling. (A) The expression of NKG2D ligands, MICA/MICB, ULBP 3, ULBP 1, and ULBP 2/5/6 on U266 and K562 target cell lines. (B) The percentage of U266 cells killed by Pre-Ex and Post-Ex expanded TCR- $\gamma\delta$ T-cells under 3 different conditions: no antibody (media), isotype control (REA), and anti-NKG2D. Values are mean \pm SE. Differences from Post-Ex anti-NKG2D condition are indicated by &, $p < 0.05$.

ex vivo expanded TCR- $\gamma\delta$ T-cells. An important observation was the augmented *ex vivo* expansion of the TCR- $\gamma\delta$ T-cells expanded from blood collected 1 h after exercise cessation compared to rest. As the numbers of TCR- $\gamma\delta$ T-cells in

blood at this time were lower than at rest, this indicates that the adjuvant effects of exercise are not merely due to increased numbers of TCR- $\gamma\delta$ T-cells within a fixed volume of blood.

Previous studies have shown that ZOL+IL-2 expands a TCR- $\gamma\delta$ T-cell product with a high surface expression of the activating receptors NKG2D, TRAIL, DNAM-1, an increased expression of perforin and granzyme-B, and transforms the cells to an effector/central memory phenotype (8, 10, 32). Regardless of whether blood samples were collected at rest, during, or in the recovery phase of exercise, the 14-day *ex vivo* expansion with ZOL+IL-2 generated a cell product that was >98% pure for CD3+ T-cells. This expanded cell product consisted primarily of CD3+/CD4-/CD8- V γ 9V δ 2 T-cells with few CD8+ and CD4+ T-cells and almost no NK-cells (<1%). Similarly, administering nadolol or bisoprolol prior to exercise had no impact on the purity of the expanded TCR- $\gamma\delta$ T-cell product. However, we did find some phenotypic differences in the TCR- $\gamma\delta$ T-cell products expanded from exercised compared to resting blood. Notably, greater proportions of NKG2D+/CD62L-, CD56+, CD158a+, CD158b+, and CD158e+ and decreased proportions of NKG2A+ and CD62L+ cells were found among the V γ 9V δ 2+ T-cells expanded after exercise. As TCR- $\gamma\delta$ T-cells recognize stress-associated antigens such as MICA/B and nectin-like-5 via NKG2D and DNAM-1, respectively (33), it is possible that these phenotypic changes on the expanded cell product with exercise are responsible for the augmented cytotoxic effects seen against the K562, U266, and 221.AEH cell lines *in vitro*. Indeed, although expression of the activating receptor NKG2D was not upregulated by exercise on the expanded TCR- $\gamma\delta$ T-cells, blocking NKG2D *in vitro* abrogated the enhanced cytotoxic effects of the TCR- $\gamma\delta$ T-cells expanded after exercise against U266 target cells. This indicates that exercise evokes phenotypic shifts (mainly a downregulation of inhibitory receptors) that allow activation signals via NKG2D to be more dominant. However, blocking NKG2D did not eliminate the enhancing effects of exercise on the cytotoxic effects of TCR- $\gamma\delta$ T-cells against the K562 target cell line. This could be due to our U266 target cells expressing higher levels of the NKG2D ligands MICA/MICB ULBP-1 and ULBP-3 than the K562 cells, corroborating what has been published previously (34, 35). Moreover, nadolol prevented some of the phenotypic shifts seen with exercise (e.g., CD56+ and NKG2D+/CD62L-) concomitantly with an abrogation of the exercise-induced improvements in TCR- $\gamma\delta$ T-cell cytotoxicity. It remains possible that the enhanced cytotoxic effects of TCR- $\gamma\delta$ T-cells against K562 target cells with exercise are due to phenotypic shifts we did not capture in our study. Also, because we only tested the effects of β -AR blockade on a subgroup of participants, this might explain why nadolol did not abrogate all of the phenotypic changes observed during the main exercise trial to a level that reached statistical significance.

Exercise is known to preferentially mobilize TCR- $\gamma\delta$ T-cells with a differentiated phenotype, increasing proportions of effector memory (EM), CD45RA+ EM (EMRA), and central memory (CM) cells among total TCR- $\gamma\delta$ T-cells in blood (16, 36, 37). However, expanding TCR- $\gamma\delta$ T-cells *ex vivo* overrode these phenotypic shifts of exercise, as similar proportions of naïve (~5%), EM (~71%), CM (~21%), and EMRA (~3%) cells were found among the expanded V γ 9V δ 2+ T-cells regardless

of whether blood samples were collected before, during, or in the recovery phase of exercise. Previous studies have shown that IPP and Zoledronate stimulation causes a shift toward an EM phenotype in expanded V γ 9V δ 2+ T-cells and these cells have enhanced cytotoxic activity and increased IFN- γ release in response to activation (8, 10, 38, 39).

A limitation of the present study is that we only attempted to expand V γ 9V δ 2+ and not V δ 1+ T-cells with exercise. Although V γ 9V δ 2+ T-cells are the most abundant subset of TCR- $\gamma\delta$ T-cells in blood, the V δ 1+ subset is known to play a prominent role in anti-tumor immunity and in the resolution of viral infections such as cytomegalovirus (40). We did not expect to find increased numbers of V δ 1+ T-cells in our expanded products as this subset of TCR- $\gamma\delta$ T-cells do not respond to aminobisphosphonates. There are methods for the *ex vivo* expansion and adoptive transfer of V δ 1+ cells has been used in the treatment of multiple myeloma (41), colon cancer (42), B-cell chronic lymphocytic leukemia (43), and glioblastoma (44), but it remains to be seen if systemic β -AR activation can augment the *ex vivo* manufacture of this cell type also. It is also possible that the adjuvant effects of exercise on the *ex vivo* expansion of TCR- $\gamma\delta$ T-cells are monocyte-dependent. Previous studies have shown that removing monocytes from culture results in no expansion of TCR- $\gamma\delta$ T-cells when stimulated with ZOL+IL-2 (45). When aminobisphosphates such as ZOL are taken up by monocytes, they block farnesyl pyrophosphate synthase (FPPS) resulting in an intracellular accumulation of isopentenyl phosphate (IPP) via the mevalonate pathway. Subsequent cell-to-cell contact then triggers the activation and expansion of V γ 9V δ 2 T-cells (46). Exercise is known to cause proportional and phenotypic changes within the blood monocyte population (18, 47–50) and it is possible that these are driving the adjuvant effects of exercise on the *ex vivo* expansion and increased cytotoxicity of TCR- $\gamma\delta$ T-cells. Specifically, exercise increases the proportions and absolute number of non-classical monocytes, which release higher levels of pro inflammatory cytokines (e.g., TNF- α and IL-18) that are essential for the activation and expansion of V γ 9V δ 2 T-cells (51). Moreover, the activation of V γ 9V δ 2 T-cells by ZOL and IPP requires expression of butyrophilin BTN3A molecules on monocytes (52), which could also be affected by exercise. Future studies should determine the role monocytes play in activating and expanding TCR- $\gamma\delta$ T-cells after exercise. It will also be important to determine if the TCR- $\gamma\delta$ T-cells expanded with systemic β -AR activation persist following adoptive transfer and exert improved anti-tumor effects *in vivo*.

In summary, this is the first study to show that systemic β -AR activation augments the *ex vivo* expansion and anti-tumor cytotoxicity of V γ 9V δ 2 T-cells in healthy humans. We have also demonstrated that these effects are largely mediated by catecholamine signaling through the β_2 -AR subtype and exercise-induced phenotypic shifts among the expanded V γ 9V δ 2 T-cells that promote a dominant activating signal through the NKG2D receptor. Future studies should determine if targeted β_1 -AR and/or β_2 -AR activation in allogeneic donors can generate superior G-CSF mobilized peripheral stem cell grafts and increase

the potency of TCR- $\gamma\delta$ T-cell therapeutics to elicit more positive outcomes in alloHCT patients and patients with solid tumors.

DATA AVAILABILITY STATEMENT

The datasets generated for this study are available on request to the corresponding author.

ETHICS STATEMENT

The studies involving human participants were reviewed and approved by Committee for the Protection of Human Participants (CPHS) at the University of Houston. The patients/participants provided their written informed consent to participate in this study.

REFERENCES

- Lawand M, Dechanet-Merville J, Dieu-Nosjean MC. Key features of gamma-delta T-cell subsets in human diseases and their immunotherapeutic implications. *Front Immunol.* (2017) 8:761. doi: 10.3389/fimmu.2017.00761
- Kabelitz D, Kalyan S, Oberg HH, Wesch D. Human Vdelta2 vs. non-Vdelta2 gammadelta T cells in antitumor immunity. *Oncoimmunology.* (2013) 2:e23304. doi: 10.4161/onci.23304
- Vantourout P, Hayday A. Six-of-the-best: unique contributions of gammadelta T cells to immunology. *Nat Rev Immunol.* (2013) 13:88–100. doi: 10.1038/nri3384
- Perko R, Kang G, Sunkara A, Leung W, Thomas PG, Dallas MH. $\gamma\delta$ T cell reconstitution is associated with fewer infections and improved event-free survival after hematopoietic stem cell transplantation for pediatric leukemia. *Biol Blood Marrow Transplant.* (2015) 21:130–6. doi: 10.1016/j.bbmt.2014.09.027
- Hu Y, Cui Q, Luo C, Luo Y, Shi J, Huang H. A promising sword of tomorrow: human gammadelta T cell strategies reconcile allo-HSCT complications. *Blood Rev.* (2016) 30:179–88. doi: 10.1016/j.blre.2015.11.002
- Godder KT, Henslee-Downey PJ, Mehta J, Park BS, Chiang KY, Abhyankar S, et al. Long term disease-free survival in acute leukemia patients recovering with increased gammadelta T cells after partially mismatched related donor bone marrow transplantation. *Bone Marrow Transplant.* (2007) 39:751–7. doi: 10.1038/sj.bmt.1705650
- Hoeres T, Smetak M, Pretschner D, Wilhelm M. Improving the efficiency of V γ 9V δ 2 T-cell immunotherapy in cancer. *Front Immunol.* (2018) 9:800. doi: 10.3389/fimmu.2018.00800
- Kondo M, Izumi T, Fujieda N, Kondo A, Morishita T, Matsushita H, et al. Expansion of human peripheral blood gammadelta T cells using zoledronate. *J Vis Exp.* (2011) 55:3182. doi: 10.3791/3182
- Bertaina A, Zorzoli A, Petretto A, Barbarito G, Inglese E, Merli P, et al. Zoledronic acid boosts gammadelta T-cell activity in children receiving alphabeta(+) T and CD19(+) cell-depleted grafts from an HLA-haplo-identical donor. *Oncoimmunology.* (2017) 6:e1216291. doi: 10.1080/2162402X.2016.1216291
- Kondo M, Sakuta K, Noguchi A, Ariyoshi N, Sato K, Sato S, et al. Zoledronate facilitates large-scale *ex vivo* expansion of functional gammadelta T cells from cancer patients for use in adoptive immunotherapy. *Cytotherapy.* (2008) 10:842–56. doi: 10.1080/14653240802419328
- Pressey JG, Adams J, Harkins L, Kelly D, You Z, Lamb LS Jr. *In vivo* expansion and activation of gammadelta T cells as immunotherapy for refractory neuroblastoma: a phase 1 study. *Medicine.* (2016) 95:e4909. doi: 10.1097/MD.0000000000004909
- Anane LH, Edwards KM, Burns VE, Drayson MT, Riddell NE, van Zanten JJ, et al. Mobilization of gammadelta T lymphocytes in response to psychological stress, exercise, and beta-agonist infusion. *Brain Behav Immun.* (2009) 23:823–9. doi: 10.1016/j.bbi.2009.03.003

AUTHOR CONTRIBUTIONS

RS, CB, RB, and FB developed the theoretical framework, working hypotheses, and designed the study. FB, AB, and NA performed the laboratory experiments and analyzed results. FB, RS, AB, CB, EK, RB, CP, and DO'C interpreted data. FB and RS wrote the manuscript with contributions from AB, CB, EK, DO'C, CP, and RB. The statistical analyses were performed by FB and DO'C. The overall study was supervised by RS.

FUNDING

This work was supported by NASA Grants NNX12AB48G, NNX16AB29G, and NNX16AG02G and NIH Grant R21 CA197527-01A1.

- Gustafson MP, DiCostanzo AC, Wheatley CM, Kim CH, Bornschlegl S, Gastineau DA, et al. A systems biology approach to investigating the influence of exercise and fitness on the composition of leukocytes in peripheral blood. *J Immunother Cancer.* (2017) 5:30. doi: 10.1186/s40425-017-0231-8
- Pistillo M, Bigley AB, Spielmann G, LaVoy EC, Morrison MR, Kunz H, et al. The effects of age and viral serology on gammadelta T-cell numbers and exercise responsiveness in humans. *Cell Immunol.* (2013) 284:91–7. doi: 10.1016/j.cellimm.2013.07.009
- Jackson AS, Blair SN, Mahar MT, Wier LT, Ross RM, Stuteville JE. Prediction of functional aerobic capacity without exercise testing. *Med Sci Sports Exerc.* (1990) 22:863–70. doi: 10.1249/00005768-199012000-00021
- Bigley AB, Rezvani K, Chew C, Sekine T, Pistillo M, Crucian B, et al. Acute exercise preferentially redeployes NK-cells with a highly-differentiated phenotype and augments cytotoxicity against lymphoma and multiple myeloma target cells. *Brain Behav Immun.* (2014) 39:160–71. doi: 10.1016/j.bbi.2013.10.030
- Weltman A. *The Blood Lactate Response to Exercise.* Champaign, IL: Human Kinetics (1995).
- Rooney BV, Bigley AB, LaVoy EC, Laughlin M, Pedlar C, Simpson RJ. Lymphocytes and monocytes egress peripheral blood within minutes after cessation of steady state exercise: a detailed temporal analysis of leukocyte extravasation. *Physiol Behav.* (2018) 194:260–7. doi: 10.1016/j.physbeh.2018.06.008
- Lee N, Goodlett DR, Ishitani A, Marquardt H, Geraghty DE. HLA-E surface expression depends on binding of TAP-dependent peptides derived from certain HLA class I signal sequences. *J Immunol.* (1998) 160:4951–60.
- Bigley AB, Agha NH, Baker FL, Spielmann G, Kunz HE, Mylabathula PL, et al. NK-cell function is impaired during long-duration spaceflight. *J Appl Physiol.* (2018) 126:842–53. doi: 10.1152/jappphysiol.00761.2018
- Kunz HE, Spielmann G, Agha NH, O'Connor DP, Bollard CM, Simpson RJ. A single exercise bout augments adenovirus-specific T-cell mobilization and function. *Physiol Behav.* (2018) 194:56–65. doi: 10.1016/j.physbeh.2018.04.035
- Simpson RJ, Bigley AB, Agha N, Hanley PJ, Bollard CM. Mobilizing immune cells with exercise for cancer immunotherapy. *Exerc Sport Sci Rev.* (2017) 45:163–72. doi: 10.1249/JES.0000000000000114
- Spielmann G, Bollard CM, Kunz H, Hanley PJ, Simpson RJ. A single exercise bout enhances the manufacture of viral-specific T-cells from healthy donors: implications for allogeneic adoptive transfer immunotherapy. *Sci Rep.* (2016) 6:25852. doi: 10.1038/srep25852
- Airoldi I, Bertaina A, Prigione I, Zorzoli A, Pagliara D, Cocco C, et al. gammadelta T-cell reconstitution after HLA-haploidentical hematopoietic transplantation depleted of TCR-alphabeta+/CD19+ lymphocytes. *Blood.* (2015) 125:2349–58. doi: 10.1182/blood-2014-09-599423
- Locatelli F, Lucarelli B, Merli P. Current and future approaches to treat graft failure after allogeneic hematopoietic stem cell transplantation. *Expert Opin Pharmacother.* (2014) 15:23–36. doi: 10.1517/14656566.2014.852537

26. Lo Presti E, Corsale AM, Dieli F, Meraviglia S. $\gamma\delta$ cell-based immunotherapy for cancer. *Expert Opin Biol Ther.* (2019) 19:887–95. doi: 10.1080/14712598.2019.1634050
27. Kunzmann V, Bauer E, Feurle J, Weissinger F, Tony HP, Wilhelm M. Stimulation of gammadelta T cells by aminobisphosphonates and induction of antiplasma cell activity in multiple myeloma. *Blood.* (2000) 96:384–92. doi: 10.1182/blood.V96.2.384.013k07_384_392
28. Salot S, Bercegeay S, Dreno B, Saiagh S, Scaglione V, Bonnafous C, et al. Large scale expansion of Vgamma9Vdelta2 T lymphocytes from human peripheral blood mononuclear cells after a positive selection using MACS “TCR gamma/delta+ T cell isolation kit”. *J Immunol Methods.* (2009) 347:12–8. doi: 10.1016/j.jim.2009.05.006
29. Wilhelm M, Kunzmann V, Eckstein S, Reimer P, Weissinger F, Ruediger T, et al. Gammadelta T cells for immune therapy of patients with lymphoid malignancies. *Blood.* (2003) 102:200–6. doi: 10.1182/blood-2002-12-3665
30. Wilhelm M, Smetak M, Schaefer-Eckart K, Kimmel B, Birkmann J, Einsele H, et al. Successful adoptive transfer and *in vivo* expansion of haploidentical gammadelta T cells. *J Transl Med.* (2014) 12:45. doi: 10.1186/1479-5876-12-45
31. Wheeldon NM, McDevitt DG, Lipworth BJ. The effects of lower than conventional doses of oral nadolol on relative beta 1/beta 2-adrenoceptor blockade. *Br J Clin Pharmacol.* (1994) 38:103–8. doi: 10.1111/j.1365-2125.1994.tb04332.x
32. Dokouhaki P, Schuh NW, Joe B, Allen CA, Der SD, Tsao MS, et al. NKG2D regulates production of soluble TRAIL by *ex vivo* expanded human gammadelta T cells. *Eur J Immunol.* (2013) 43:3175–82. doi: 10.1002/eji.201243150
33. Lafont V, Sanchez F, Laprevotte E, Michaud HA, Gros L, Eliaou JF, et al. Plasticity of gammadelta T cells: impact on the anti-tumor response. *Front Immunol.* (2014) 5:622. doi: 10.3389/fimmu.2014.00622
34. Giralda S, Fortis C, Belloni D, Ferrero E, Ticozzi P, Sciorati C, et al. MICA expressed by multiple myeloma and monoclonal gammopathy of undetermined significance plasma cells costimulates pamidronate-activated $\gamma\delta$ lymphocytes. *Cancer Res.* (2005) 65:7502–8. doi: 10.1158/0008-5472.CAN-05-0731
35. Martin-Antonio B, Najjar A, Robinson SN, Chew C, Li S, Yvon E, et al. Transmissible cytotoxicity of multiple myeloma cells by cord blood-derived NK cells is mediated by vesicle trafficking. *Cell Death Differ.* (2014) 22:96. doi: 10.1038/cdd.2014.120
36. Anane LH, Edwards KM, Burns VE, Zanten JJ, Drayson MT, Bosch JA. Phenotypic characterization of gammadelta T cells mobilized in response to acute psychological stress. *Brain Behav Immun.* (2010) 24:608–14. doi: 10.1016/j.bbi.2010.01.002
37. Campbell JP, Riddell NE, Burns VE, Turner M, van Zanten JJ, Drayson MT, et al. Acute exercise mobilises CD8+ T lymphocytes exhibiting an effector-memory phenotype. *Brain Behav Immun.* (2009) 23:767–75. doi: 10.1016/j.bbi.2009.02.011
38. Dieli F, Poccia F, Lipp M, Sireci G, Caccamo N, Di Sano C, et al. Differentiation of effector/memory Vdelta2 T cells and migratory routes in lymph nodes or inflammatory sites. *J Exp Med.* (2003) 198:391–7. doi: 10.1084/jem.20030235
39. Pauza CD, Liou ML, Lahusen T, Xiao L, Lapidus RG, Cairo C, et al. $\gamma\delta$ T cell therapy for cancer: it is good to be local. *Front Immunol.* (2018) 9:1305. doi: 10.3389/fimmu.2018.01305
40. Couzi L, Pitard V, Moreau JF, Merville P, Dechanet-Merville J. Direct and indirect effects of cytomegalovirus-induced gammadelta T cells after kidney transplantation. *Front Immunol.* (2015) 6:3. doi: 10.3389/fimmu.2015.00003
41. Knight A, Mackinnon S, Lowdell MW. Human Vdelta1 gamma-delta T cells exert potent specific cytotoxicity against primary multiple myeloma cells. *Cytotherapy.* (2012) 14:1110–8. doi: 10.3109/14653249.2012.700766
42. Wu D, Wu P, Wu X, Ye J, Wang Z, Zhao S, et al. *Ex vivo* expanded human circulating Vdelta1 gammadelta T cells exhibit favorable therapeutic potential for colon cancer. *Oncoimmunology.* (2015) 4:e992749. doi: 10.4161/2162402X.2014.992749
43. Siegers GM, Dhamko H, Wang XH, Mathieson AM, Kosaka Y, Felizardo TC, et al. Human Vdelta1 gammadelta T cells expanded from peripheral blood exhibit specific cytotoxicity against B-cell chronic lymphocytic leukemia-derived cells. *Cytotherapy.* (2011) 13:753–64. doi: 10.3109/14653249.2011.553595
44. Knight A, Arnouk H, Britt W, Gillespie GY, Cloud GA, Harkins L, et al. CMV-independent lysis of glioblastoma by *ex vivo* expanded/activated Vdelta1+ gammadelta T cells. *PLoS ONE.* (2013) 8:e68729. doi: 10.1371/journal.pone.0068729
45. Miyagawa F, Tanaka Y, Yamashita S, Minato N. Essential requirement of antigen presentation by monocyte lineage cells for the activation of primary human $\gamma\delta$ T cells by aminobisphosphonate antigen. *J Immunol.* (2001) 166:5508–14. doi: 10.4049/jimmunol.166.9.5508
46. Roelofs AJ, Jauhiainen M, Monkkonen H, Rogers MJ, Monkkonen J, Thompson K. Peripheral blood monocytes are responsible for gammadelta T cell activation induced by zoledronic acid through accumulation of IPP/DMAPP. *Br J Haematol.* (2009) 144:245–50. doi: 10.1111/j.1365-2141.2008.07435.x
47. Campbell JP, Turner JE. Debunking the myth of exercise-induced immune suppression: redefining the impact of exercise on immunological health across the lifespan. *Front Immunol.* (2018) 9:648. doi: 10.3389/fimmu.2018.00648
48. Graff RM, Kunz HE, Agha NH, Baker FL, Laughlin M, Bigley AB, et al. β 2-adrenergic receptor signaling mediates the preferential mobilization of differentiated subsets of CD8+ T-cells, NK-cells and non-classical monocytes in response to acute exercise in humans. *Brain Behav Immun.* (2018) 74:143–53. doi: 10.1016/j.bbi.2018.08.017
49. LaVoy EC, Bollard CM, Hanley PJ, O'Connor DP, Lowder TW, Bosch JA, et al. A single bout of dynamic exercise by healthy adults enhances the generation of monocyte-derived-dendritic cells. *Cell Immunol.* (2015) 295:52–9. doi: 10.1016/j.cellimm.2015.02.007
50. Simpson RJ, Kunz H, Agha N, Graff R. Exercise and the regulation of immune functions. *Prog Mol Biol Transl Sci.* (2015) 135:355–80. doi: 10.1016/bs.pmbts.2015.08.001
51. Nussbaumer O, Gruenbacher G, Gander H, Komuczki J, Rahm A, Thurnher M. Essential requirements of zoledronate-induced cytokine and gammadelta T cell proliferative responses. *J Immunol.* (2013) 191:1346–55. doi: 10.4049/jimmunol.1300603
52. Kabelitz D, Lettau M, Janssen O. Immunosurveillance by human gammadelta T lymphocytes: the emerging role of butyrophilins. *F1000Res.* (2017) 6:782. doi: 10.12688/f1000research.11057.1

Conflict of Interest: The authors declare that the research was conducted in the absence of any commercial or financial relationships that could be construed as a potential conflict of interest.

Copyright © 2020 Baker, Bigley, Agha, Pedlar, O'Connor, Bond, Bollard, Katsanis and Simpson. This is an open-access article distributed under the terms of the Creative Commons Attribution License (CC BY). The use, distribution or reproduction in other forums is permitted, provided the original author(s) and the copyright owner(s) are credited and that the original publication in this journal is cited, in accordance with accepted academic practice. No use, distribution or reproduction is permitted which does not comply with these terms.