



Intestinal Epithelial Cells-Derived Hypoxia-Inducible Factor-1 α Is Essential for the Homeostasis of Intestinal Intraepithelial Lymphocytes

Lihua Sun¹, Teming Li¹, Hanlin Tang¹, Kun Yu¹, Yuanhang Ma¹, Min Yu¹, Yuan Qiu¹, Pengyuan Xu², Weidong Xiao^{1*} and Hua Yang^{1*}

¹ Department of General Surgery, Xinqiao Hospital, Third Military Medical University, Chongqing, China, ² Department of Gastrointestinal Surgery, The Second Affiliated Hospital of Kunming Medical University, Kunming, China

OPEN ACCESS

Edited by:

Eric Cox,
Ghent University, Belgium

Reviewed by:

Hiroshi Nakase,
Sapporo Medical University, Japan
Chenyang Wang,
Nanjing University, China

*Correspondence:

Weidong Xiao
xiaoweidong@tmmu.edu.cn
Hua Yang
huayang@tmmu.edu.cn

Specialty section:

This article was submitted to
Mucosal Immunity,
a section of the journal
Frontiers in Immunology

Received: 06 June 2018

Accepted: 26 March 2019

Published: 16 April 2019

Citation:

Sun L, Li T, Tang H, Yu K, Ma Y, Yu M, Qiu Y, Xu P, Xiao W and Yang H (2019) Intestinal Epithelial Cells-Derived Hypoxia-Inducible Factor-1 α Is Essential for the Homeostasis of Intestinal Intraepithelial Lymphocytes. *Front. Immunol.* 10:806. doi: 10.3389/fimmu.2019.00806

Hif-1 α is a master regulator which involved in the transcriptional regulation of anti-inflammatory or cellular responding to hypoxia. Previous work shows that the absence of Hif-1 α results in the destruction of intestinal epithelial cell (IEC) and abnormalities of intestinal barrier function. However, we know very little about other functions of Hif-1 α on intestinal intraepithelial lymphocyte (IEL). Therefore, we generated a transgenic mouse (Hif1- $\alpha^{\Delta IEC}$ mice), which was knocked out Hif1- α specifically in IECs, to study the effect of Hif1- α on IEL. IELs were isolated from the small intestine and colon of mice, respectively, and examined by flow cytometry and quantitative real-time PCR. All the cytokines expression was detected by quantitative real-time PCR. The NSAID enteropathy was induced by gavaged with 5 mg/kg indomethacin and the experimental colitis was induced by administration of 2.5% DSS. We found that the number of IELs is increased in Hif1- $\alpha^{\Delta IEC}$ mice. It is showed that knockout of Hif1- α in IECs led to significant changes in IEL phenotype, including a marked decline in the CD8 $\alpha\alpha^+$ and TCR $\gamma\delta^+$ population. The reduction of CD8 $\alpha\alpha^+$ IELs is accompanied by increased apoptosis, decreased proliferation and weakened migration in Hif1- $\alpha^{\Delta IEC}$ mice. Moreover, absence of intestinal epithelial Hif1- α markedly changed the population of IELs in NSAID-induced small intestinal injury and increased susceptibility to dextran sulfate sodium-induced colitis. In summary, our results first time demonstrate that IEC-derived Hif1- α is essential for maintaining IELs homeostasis and intestinal microbiota.

Keywords: intestinal epithelial cells, hypoxia-inducible factor-1 α , intestinal intraepithelial lymphocytes, inflammatory bowel disease, CD8

INTRODUCTION

Intestinal immune homeostasis depends on tightly regulated crosstalk among commensal bacteria, mucosal immune cells, and intestinal epithelial cells (IECs). Disruption of this homeostasis leads to an inflammatory disorder of the gastrointestinal tract (1). Previous studies demonstrated that IEC-derived regulatory signals controlled innate and adaptive immune-cell function in the intestinal microenvironment. Disruption of IEC-intrinsic pathways results in dysregulated

innate and adaptive immune responses in mouse models of inflammatory bowel disease (IBD) (2). According to reports, IECs regulate dendritic cells (DCs) function through the secretion of immunoregulatory molecules including thymic stromal lymphopoietin (TSLP), transforming growth factor- β (TGF- β), and prostaglandin E₂ (2–4). It is reported that IEC-derived TSLP can also influence mast-cells activation (2, 5). In addition to effects on mast-cells and DCs, there is increasing evidence that IEC-derived signals can positively and negatively regulate T and B cell functions in the intestine (2, 6). In contrast to the crosstalk between IECs and these immune cells, the influence of IECs on intraepithelial lymphocytes (IELs) is much less clear.

IELs are a distinct population of T lymphocytes, which are located at the basolateral side of IECs in the epithelial layer of the intestine (7). IELs play an important role in maintaining intestinal homeostasis and defense against intestinal pathogens (8). Previous studies of small intestinal IELs showed that IELs could possess several features that distinguish them from peripheral lymphocytes in structure, function, origin, development and homing (9, 10). Traditionally, IELs can be classified into two major subgroups based on their differential expression of T cell receptors (TCR): TCR $\alpha\beta^+$ cells and TCR $\gamma\delta^+$ cells (11). However, IELs can also be divided into another two groups based on their expression of co-receptor molecules: “Type A or induced IELs” and “Type B or natural IELs.” Type A IELs include conventional CD4⁺ and CD8 $\alpha\beta^+$ T cells; Type B IELs include unconventional CD8 $\alpha\alpha^+$ T cells (12). In mice, about 65–75% of small intestinal IELs are “Type B IELs” (13).

Our and others previous studies demonstrated that IEC played an important role in regulating IELs phenotype and function by secreting various kinds of cytokines (7, 14). For example, epithelial-derived IL-7 has particular importance in the intestines as an extrathymic regulator of $\gamma\delta$ IEL differentiation and growth (7, 15, 16). Mice lacking IL-7 showed severely decreased $\gamma\delta$ IEL numbers (15). Oppositely, mice with IEC-specific over-expression of IL-7 resulted in a significant expansion of the IEL population (7). Mice lacking IL-15 also shows a severe reduction in CD8 $\alpha\alpha^+$ TCR $\alpha\beta^+$ and TCR $\gamma\delta^+$ IELs (17). It shows that IL-18 produced by IECs, in collaboration with other cytokines such as IL-7 and IL-15, plays a crucial role in the proliferation and development of intestinal IELs (18). One latest research shows that mice lacking IEC-intrinsic histone deacetylase 3 (HDAC3) results in CD8 $\alpha\alpha^+$ TCR $\alpha\beta^+$ IELs impaired function by IL-18 pathway during an enteric infection (19). However, how the IEL instructed by surrounding IEC is still remained obscure.

Hypoxia-inducible factor-1(HIF-1) is a heterodimeric transcription factor which involved in the transcriptional regulation of anti-inflammatory or tissue-protective signaling pathways (20–23). HIF-1 is composed of two subunits, the HIF-1 α and HIF-1 β subunits (24). As a key regulator of oxygen homeostasis, HIF-1 α is tightly regulated by the level of oxygen. In contrast, HIF-1 β is constitutively expressed (24, 25). Several studies have indicated that HIF-1 α activation and function are central in intestinal epithelial cells (26–28). Karhausen et al. showed that loss of epithelial HIF-1 α led to the abnormalities of intestinal barrier function and more severe colitis (26). Sun et al.

found that IEC-derived HIF-1 α contributed to the maintenance of mucosal homeostasis by inducing IL-33 expression in inflamed mucosa of IBD (28). Cummins et al. reported that HIF-1 α inhibited epithelial cell apoptosis by suppression of HIF-1 α degradation in murine colitis (27). Recent studies demonstrated that HIF-1 α also played an important role in the regulatory T cells (Tregs) (29, 30). It is reported that HIF-1 α in Dendritic cells (DCs) is necessary for the increased number of Tregs and induction of Treg-activating by the crosstalk between Tregs and DCs (29).

However, there is relatively little information about the role of epithelial HIF-1 α in the regulation of IELs. Thus, the purpose of this study is to investigate the effects of IEC-derived HIF-1 α deficiency on IELs homeostasis, functions, and intestinal inflammation.

MATERIALS AND METHODS

Ethics Statement

All experiments were performed under specific pathogen-free conditions in conformity with ethical guidelines and approved by the Animal Ethics Committee of the Third Military Medical University.

Mice

HIF-1 α Flox mice (Hif1- $\alpha^{F/F}$ mice) with C57BL/6J background were kindly provided by Lin Chen (Research Institute of Surgery, Daping Hospital, Third Military Medical University, Chongqing, China). The Villin-Cre mice with C57BL/6J background were purchased from Shanghai Research Center for Model Organisms (Shanghai, China). Hif1- $\alpha^{F/F}$ mice were first crossed with Villin-Cre mice to generate heterozygous Villin-Cre- Hif1- $\alpha^{F/+}$ mice. Then, Villin-Cre- Hif1- $\alpha^{F/+}$ mice were backcrossed with Hif1- $\alpha^{F/F}$ mice to obtain VIL-Cre-Hif1 $\alpha^{F/F}$, IEC-specific Hif1- α -deficient mice (hereinafter referred to as Hif1- $\alpha^{\Delta IEC}$ mice) (31). Sibling mice negative for cre recombinase (Hif1- $\alpha^{F/F}$) served as controls (Wild Type, WT). All mice were housed and maintained in laminar flow cabinets under specific pathogen-free conditions. In order to determine the efficiency of gene knock-out, we isolated epithelial cells from small intestine and colon, respectively, and used q-PCR analysis of epithelial mRNA. The following primers were applied: Hif1- α forward, 5'-GTCCCAGCTACGAAGTTACAGC-3'; Hif1- α reverse, 5'-CAGTGCAGGATACACAAGGTTT-3'. All were performed under the guidelines of the Institutional Animal Care and Use Committee of Third Military Medical University.

DSS Colitis Model

Male mice 6–8 weeks old were given 2.5% DSS (MP Biomedicals, Cleveland, USA) dissolved in drinking water for 7 days and body weight was recorded daily. On day 7, mice were killed by cervical dislocation, and colonic tissues were collected for stained with H&E and Flow Cytometric analysis.

NSAID Enteropathy Model

Male mice (8 weeks old with a mean weight of 21–25 g) were gavaged once daily with indomethacin (5 mg/kg; for 7 days;

Selleckchem, Houston, TX, USA) dissolved in DMSO and further diluted in phosphate buffered saline (PBS). On day 7, mice were killed by cervical dislocation, and the small intestine were collected for stained with H&E and Flow Cytometric analysis.

IEC and IEL Isolation

Intestinal IEL isolation was performed according to the protocol as described previously by our laboratory (13, 32). Mesenteric fat and Peyer's patches were carefully removed. The small intestine or colon was opened longitudinally, washed in RPMI 1640 Medium, and cut into 5 mm pieces. Then, the pieces were incubated in extraction buffer (5 mM EDTA, 2 mM DTT, 10% fetal bovine serum in PBS) with continuous brisk stirring at 37°C for 30 min. The tissue suspension was filtered rapidly through a 40- μ m strainer to remove debris and centrifuged at 2,000 rpm at 4°C for 5 min. Pelleted cells were suspended in 40%/70% isotonic Percoll (Sigma, USA) and centrifuged at 2,000 RPM at room temperature for 20 min. The supernatants contained an enriched IEC population. The IECs layer was carefully sucked off and captured for RNA extraction. IELs are at the 40–70% interface. The cells were washed twice and resuspended in RPMI 1640. The viability of the IELs exceeded 95%, according to trypan blue exclusion staining.

Flow Cytometric Analysis

The number of IELs was calculated with CountBright™ absolute counting beads according to the manufacturer's instructions (Invitrogen). The IELs were stained with a combination of the following fluorescence-conjugated mAbs: CD3-PE-CY7, CD8 α -APC, CD8 β -FITC, CD4-PE, TCR β -APC, TCR $\gamma\delta$ -FITC, CD103-PE, and CD69-FITC. All antibodies were purchased from Biolegend (San Diego, USA). Cells were suspended in 100 μ L staining buffer (eBioscience, San Diego, USA) with saturating amounts of antibodies and incubated for 30 min on ice and placed in the dark. The apoptotic ratios for the IELs were measured by flow cytometry according to the manufacturer's protocol. Flow cytometry was performed with standard techniques. The image acquisition and data analysis were performed with MoFlow (Beckman Coulter, US) and Flowjo (Three Star, Ashland, USA).

BrdU Incorporation and Measurement

For BrdU pulse-chase experiments, BrdU (2 mg/mouse) was injected i.p. 12 h prior to analysis as previously described (17); isolated cells were stained with fluorescent antibodies specific for CD3, CD8 α , and CD8 β and conjugated BrdU antibody set (BD, USA) according to manufacturer's instructions and analyzed immediately by flow cytometry.

Histological Examination

The excised intestinal tissues were fixed in 4% paraformaldehyde for histological evaluation. The segments were embedded in paraffin and cut into 5 μ m sections for staining with H&E. The histological evaluation was assessed under a light microscope (Leica, Germany) at $\times 200$ magnification.

Real-Time Quantitative PCR

Total RNA was extracted from isolated IELs or IECs using TRIzol (Invitrogen, Carlsbad, CA) following the manufacturer's instructions. Briefly, RNA was reverse-transcribed into complementary DNA (cDNA) with a SuperScript First-Strand Synthesis System RT-PCR kit (TaKaRa Bio Inc, Japan) and served as a template for amplification of IL-2, KGF, IFN- γ , RegIII γ , IL-7, IL-15, IL-6, IL-10, and β -actin. The PCR reaction was performed with GoTaq® qPCR Master Mix (Promega, USA) on the Rotor-Gene Q PCR detection system (Qiagen, Germany). The primer sequences are as follows: KGF, F: TGG GCACTATATCTCTAGCTTGC, R: GGGTGCAGACAACA GTCT; IL-2, F: TGAGCAGGATGGAGAATTACAGG, R: GTC CAAGTTCATCTTCTAGGCAC; IFN- γ , F: TGGCTGTTTCTG GCTTGTTACT, R: TGACGCTTATGTTGTTGCTGA; RegIII γ , F: TTCTGTCTCCATGATCAAAA, R: CATCCACCTCTG TTGGTTCA; IL-7, F: TTCTCCACTGATCCTTGTCT, R: AGCAGCTTCCTTTGTATCATCAC; IL-15, F: ACATCCATC TCGTGCTACTTGT, R: GCCTCTGTTTTAGGGAGACCT; IL-6, F: TAGTCCTTCCACCCAATTTCC, R: TTGGTCTT AGCCACTCCTTC; IL-10, F: ACAGCCGGGAAGACAATAAC, R: CAGCTGGTCCTTTGTTTGA; β -actin, F: AGCCATGTA CGTAGCCATCC, R: TTTGATGTCACGCACGATTT.

Enzyme Linked Immunosorbent Assay (ELISA)

The IECs were isolated from the small intestine of mice. After five cycles of freezing and thawing, proteins were released into the supernatant. Then, the protein concentration of IL-6, IL-10, IL-7, and IL-15 were determined using a specific ELISA kit (Mlbio, Shanghai, China) following the manufacturer's protocol.

Gut Microbiota Analysis

Fecal pellets were collected from mouse colon and stored at -80° C. Bacterial DNA was extracted using the TIANamp Stool DNA Kit (TIANGEN, Beijing, China). The DNA samples were sent to proceed DNA sequencing with Illumina Miseq 2 \times 300 at Shanghai Sangon Biotec Co., Ltd (Sangon, China).

Statistical Analysis

All experimental data shown as the Mean \pm SD. Statistical significance was determined by unpaired two-tailed Student *t* test or two-way ANOVA with Bonferroni *post hoc* analysis using GraphPad Prism version 7.0 software (San Diego, CA). *P* < 0.05 was considered statistically significant.

RESULTS

Hif1- α Signaling Modulates the IECs Cytokines Expression

To study the effect of Hif1- α deletion on epithelial cells, we examined the expression of several cytokines mainly secreted by epithelial cells. IECs were isolated from the small intestine of WT and Hif1- $\alpha^{\Delta IEC}$ mice, respectively. Real-time PCR analysis of the indicated cytokines is shown in **Figure 1A**. There is no significant difference in IL-6 expression between WT and Hif1- $\alpha^{\Delta IEC}$ mice. The mRNA expression of IL-10 increased more than

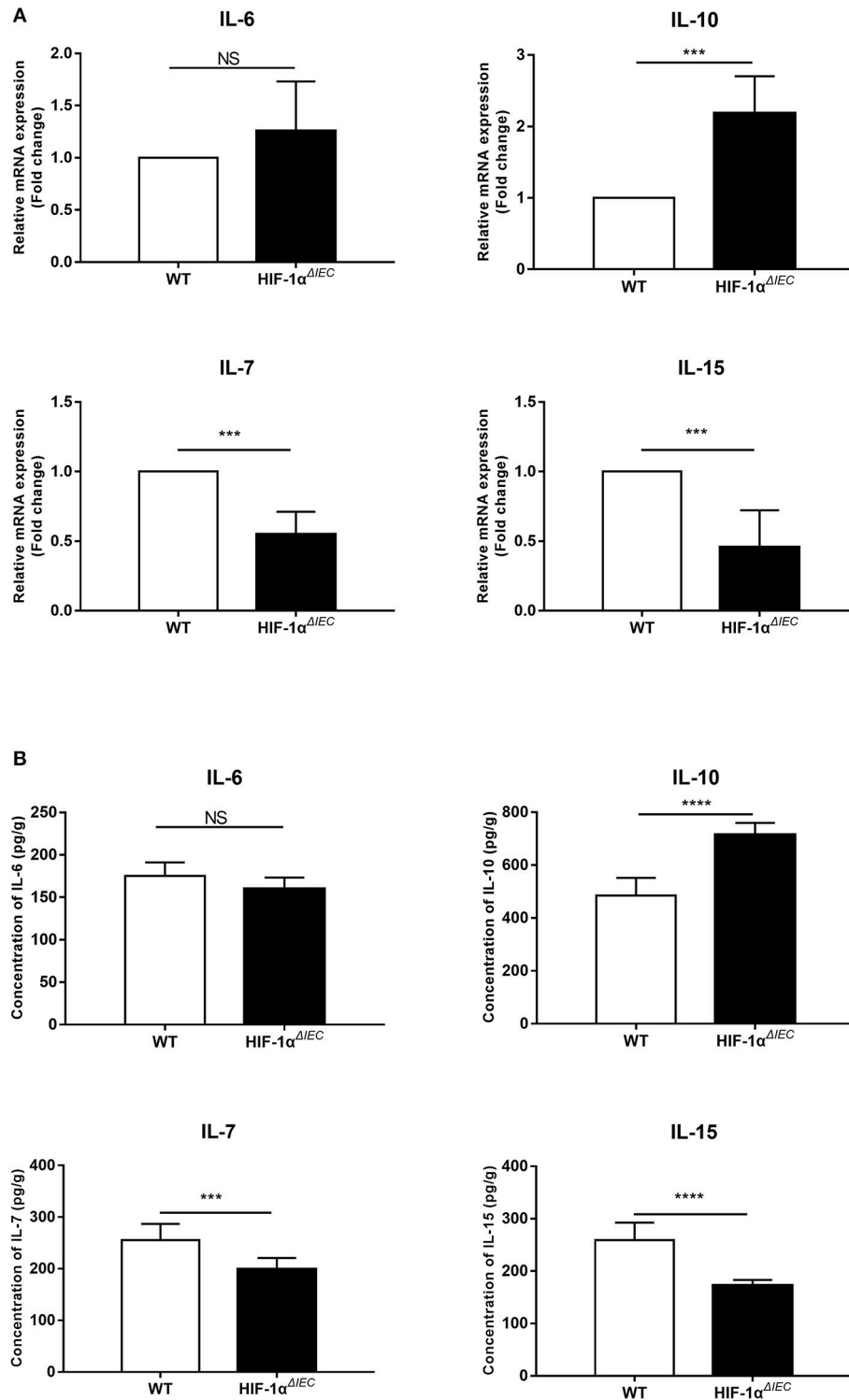


FIGURE 1 | Hif1- α signaling modulates the intestinal epithelial cells (IECs) cytokines expression. mRNA (**A**) and protein (**B**) expression of IL-6, IL-10, IL-17, and IL-15 were examined in small intestinal epithelium samples from WT or Hif1- $\alpha^{\Delta IEC}$ mice ($n = 5-8$ mice/group). *** $P < 0.001$; **** $P < 0.0001$; NS, not significant.

double in Hif1- $\alpha^{\Delta IEC}$ mice. However, IL-7 and IL-15 in Hif1- $\alpha^{\Delta IEC}$ mice showed a significant decrease in mRNA expression (about 54.88 and 45.67%, respectively) compared to the WT mice.

Consistent with the Real-time PCR result, the protein expression measured by ELISA were shown in **Figure 1B**. We and others have previously reported that IL-7 and IL-15 were closely related

to the development of IELs (33). Therefore, we speculated that Hif1- α deletion in IECs may affect the development of IELs. Then, we next examined the number, phenotype and function in IELs.

Conditional Deletion of Hif1- α in Epithelia Results in the Increase of IELs Numbers in Small Intestine

The number of IELs was accounted with CountBright™ absolute counting beads by flow cytometry. Among multiple samples, the total number of CD3⁺ cell increased about 1.5-fold ($P = 0.0013$) in the Hif1- $\alpha^{\Delta IEC}$ mice compared to the WT mice in small intestine (Figure 2A). Conversely, there was a slight decrease ($P = 0.0627$) in the number of CD3⁺ cells in the Hif1- $\alpha^{\Delta IEC}$ mice compared to WT mice in colon (Figure 2B). However, the decrease was not significant, for increased cell numbers could be due to an increase in length of the small intestine (duodenum, jejunum, and ileum). In our study, we found that the length of small intestine in Hif1- $\alpha^{\Delta IEC}$ mice is apparently longer than that in WT mice (respectively, 34.49 ± 0.52 cm vs. 28.6 ± 0.43 cm) (Figure 2C). Therefore, this result showed that IEC-specific Hif1- α -deficient mice increased the total number of IELs and the length of small intestine.

Conditional Deletion of Hif1- α in Epithelia Changes the Homeostasis of IELs

To further explore the impact of epithelial Hif-1 α knockout on the homeostasis IELs, we studied the phenotype of IELs by using flow cytometry. As shown in the Figure 3, the percentage of CD8 α^+ IELs was dramatically reduced in Hif1- $\alpha^{\Delta IEC}$ mice compared with WT mice both in the small intestine and colon (respectively, 69.83 vs. 42.29%, 52.33 vs. 44.78%). Correspondingly, CD8 $\alpha\beta^+$ IELs were increased significantly (respectively, 15.77 vs. 33.64%, 15.17 vs. 28.28%). Similarly, TCR $\gamma\delta^+$ IELs in Hif1- $\alpha^{\Delta IEC}$ mice were also obviously reduced in the small intestine and colon (respectively, 55.48 vs. 27.87%, 27.16 vs. 14.88%). However, there is a significant increase in the percentage of CD4⁺ IELs in Hif1- $\alpha^{\Delta IEC}$ mice compared with WT mice in the small intestine, but not in the colon. The proportionality of IEL subsets are summarized in Figures 3C,D. Together, these results demonstrated that IEC-derived Hif-1 α significantly influences the homeostasis of IELs, especially CD8 α^+ IELs.

Destruction of IELs Homeostasis in Hif1- $\alpha^{\Delta IEC}$ Mice Is Due to the Functional Changes of CD8⁺ IELs

It is generally believed that CD8 α^+ T cells have regulatory properties and contribute to the maintenance of intestinal homeostasis (34). To further investigate the reasons for great changes in CD8 α^+ IELs caused by epithelial Hif-1 α knockout, we assessed their proliferation, activation and apoptosis in the small intestine. CD69 is the early T cell activation marker, which can reflect the activated nature of IELs (32). So, we first detected CD69 expression by flow cytometry. The results showed no difference in the expression of CD69 both on the CD8 α^+ and

CD8 $\alpha\beta^+$ IELs whether in WT or Hif1- $\alpha^{\Delta IEC}$ mice (Figure 4A). We next examined the proliferative capacity of the two type IELs in small intestine by incorporation of BrdU *in vivo*. It is shown that CD8 α^+ IELs present an extremely poor proliferation in Hif1- $\alpha^{\Delta IEC}$ mice compared with WT mice; while CD8 $\alpha\beta^+$ IELs have not variety (Figure 4C). Further study with apoptosis analysis showed that a twice higher apoptosis in CD8 α^+ IELs and CD8 $\alpha\beta^+$ IELs in Hif1- $\alpha^{\Delta IEC}$ mice (Figure 4D). The CD103 have been associated with gut homing and retention, thus we speculate it will also be affected. Really, a significant decrement was found in the expression of CD103 on the CD8 α^+ IELs from Hif1- $\alpha^{\Delta IEC}$ mice (Figure 4B).

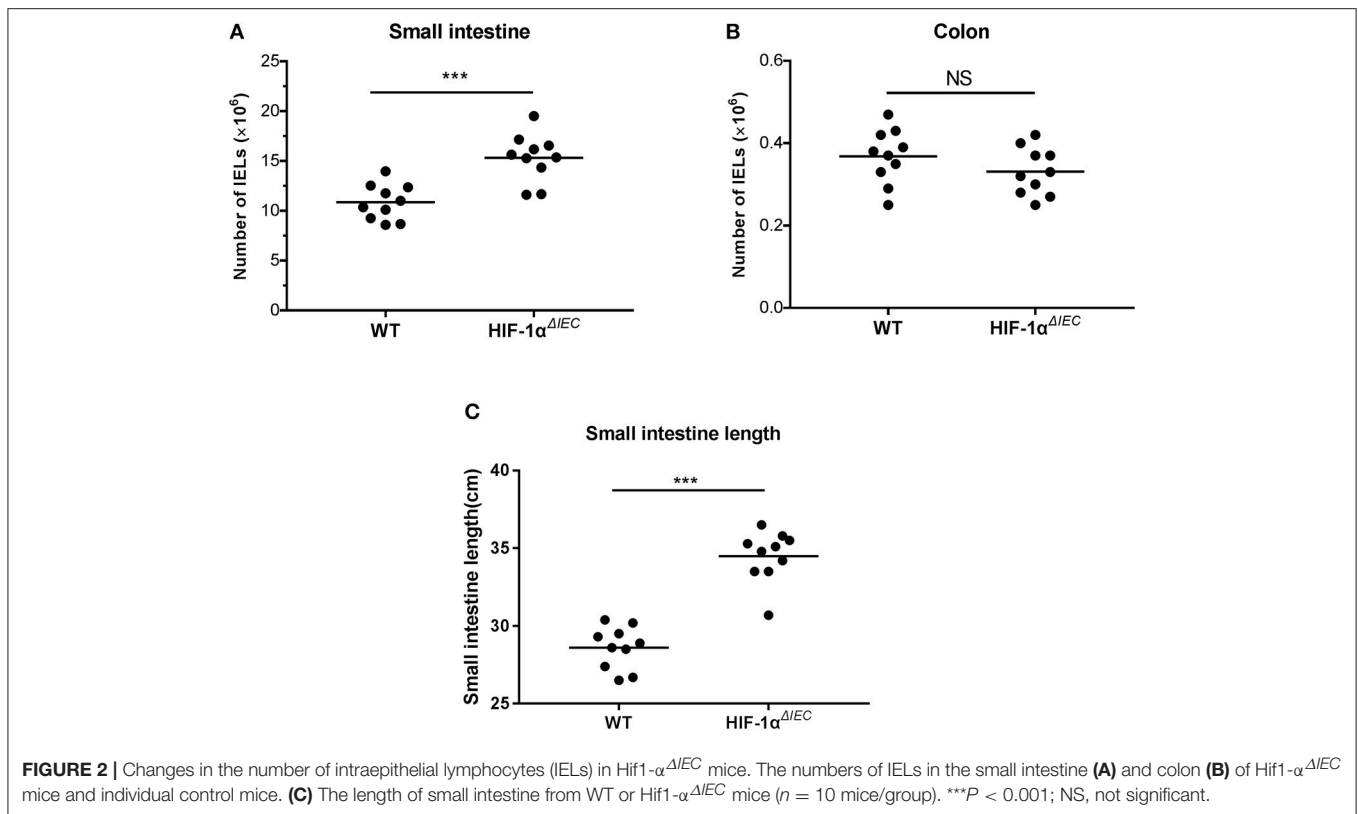
In addition, the expression of several cytokines, markers for IEL activation and intestine protection, were measured by real-time PCR. As shown in Figure 4E, there is a significant reduction on IL-2 and IFN- γ expression in the IELs from Hif1- $\alpha^{\Delta IEC}$ mice, while obvious increase on KGF and RegIII γ expression. Taken together, these findings demonstrated that changes in CD8 α^+ IELs function may be a major mechanism in breaking the homeostasis of IELs in Hif1- $\alpha^{\Delta IEC}$ mice.

Hif-1 α Deficiency in Epithelial Markedly Changed the Population of IELs in NSAID-Induced Small Intestinal Injury

Non-steroidal anti-inflammatory drugs (NSAIDs) are associated with a high incidence of disorders in digestive tract mucosa (35). Because NSAIDs mainly causes damage to the small intestine, we investigated the effects of epithelial Hif-1 α knockout in NSAIDs-induced small intestinal injury (enteropathy). We used indomethacin to gavage mice for 7 days and weighted every mouse every day. As shown in Figure 5A, the weight of all mice showed a gradual decline, except for the WT mice that increased slightly on the second day; besides, there is no difference between WT and Hif1- $\alpha^{\Delta IEC}$ mice. Similarly, the indomethacin caused a thicker and shorter small intestine both on WT and Hif1- $\alpha^{\Delta IEC}$ mice (Figure 5B). We also found that indomethacin did not produce noticeable macroscopic injuries whether in the intestinal tract of WT or in Hif1- $\alpha^{\Delta IEC}$ mice by histological analysis (Figure 5B). The next study with IELs populations in mice by using flow cytometry confirmed the importance of IECs-derived Hif1- α in the development of NSAID-induced enteropathy. The proportion of CD8 α^+ IELs was significantly decreased about 50% in Hif1- $\alpha^{\Delta IEC}$ mice compared to WT mice, while CD8 $\alpha\beta^+$ IELs was significantly increased more than twice (Figure 5C). Strikingly, the proportion of TCR $\gamma\delta^+$ IELs in Hif1- $\alpha^{\Delta IEC}$ mice was vigorously reduced by 80% (Figure 5C). The proportionality of IEL subsets in NSAID-induced enteropathy were summarized in Figure 5D.

Hif-1 α Deficiency in Epithelial Aggravate DSS-Induced Colitis Severity

The destruction of IELs homeostasis in mice may aggravate colitis in several animal models and result in impaired ability to repair damaged epithelium (13). Therefore, we used 2.5% DSS-induced colitis model to address the consequences of IEC-derived Hif-1 α deficiency for intestinal physiology. As



shown in **Figure 6A**, both DSS-treated groups induced diarrheal bloody stools and experienced progressive weight loss begin on the 4th day. However, Hif1- $\alpha^{\Delta IEC}$ mice lost more weight than WT mice; the difference in weight loss was statistically significant at days 6 and 7 (**Figure 6A**). Also, the colon length of Hif1- $\alpha^{\Delta IEC}$ mice were shorter than WT mice in DSS-induced inflammation (**Figure 6B**). Again, the histological examination of colonic tissues confirmed that DSS-treated Hif1- $\alpha^{\Delta IEC}$ mice showed more injury than WT mice (**Figure 6C**). However, no difference was observed between WT mice and Hif1- $\alpha^{\Delta IEC}$ mice without DSS-treating. Further study with IELs subpopulations in Hif1- $\alpha^{\Delta IEC}$ mice by using flow cytometry also confirmed the importance of Hif1- α in the development of DSS-induced colitis. As shown in **Figure 6D**, the proportion of CD8 α^+ IELs was slightly decreased in Hif1- $\alpha^{\Delta IEC}$ mice compared to WT mice. Similarly, the proportion of TCR $\gamma\delta^+$ IELs in Hif1- $\alpha^{\Delta IEC}$ mice was also slightly reduced. The proportionality of IEL subsets in DSS-induced colitis were summarized in **Figure 6E**.

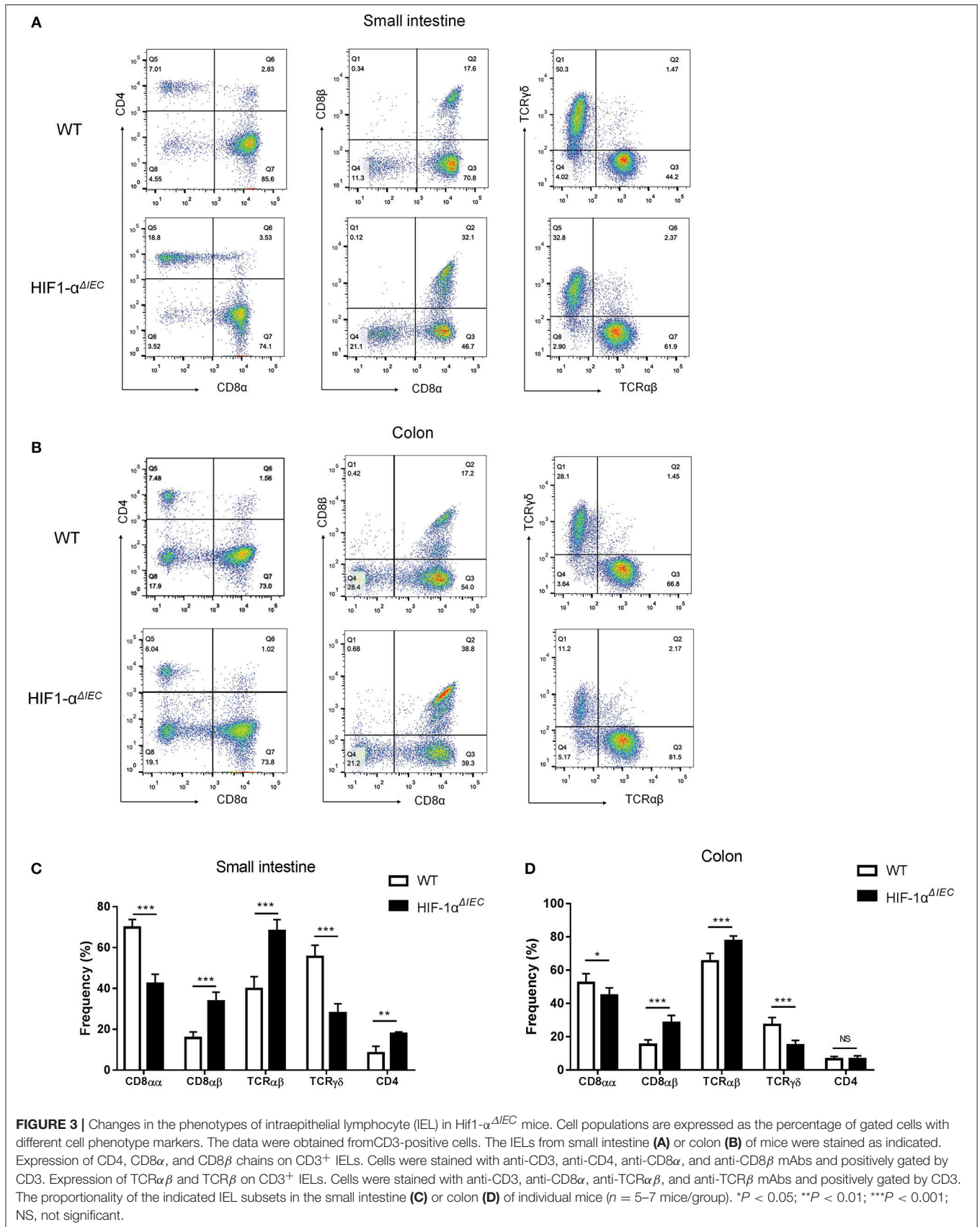
Because Hif1- α also play important roles in host mucosal defense and response to microbial pathogens (36). Then, we examined the population of major microbial species by fecal DNA sequencing. It is shown that bacterial abundance is significantly changed in Hif1- $\alpha^{\Delta IEC}$ mice compared with the WT mice without any treatment; demonstrating increased Erysipelotrichales, Lactobacillales and decreased Bacteroidales, Desulfovibrionales (**Figure 7**). The raw sequences of this study have been deposited in the Sequence Read Archive (accession number SRP166048). Taken together, these findings

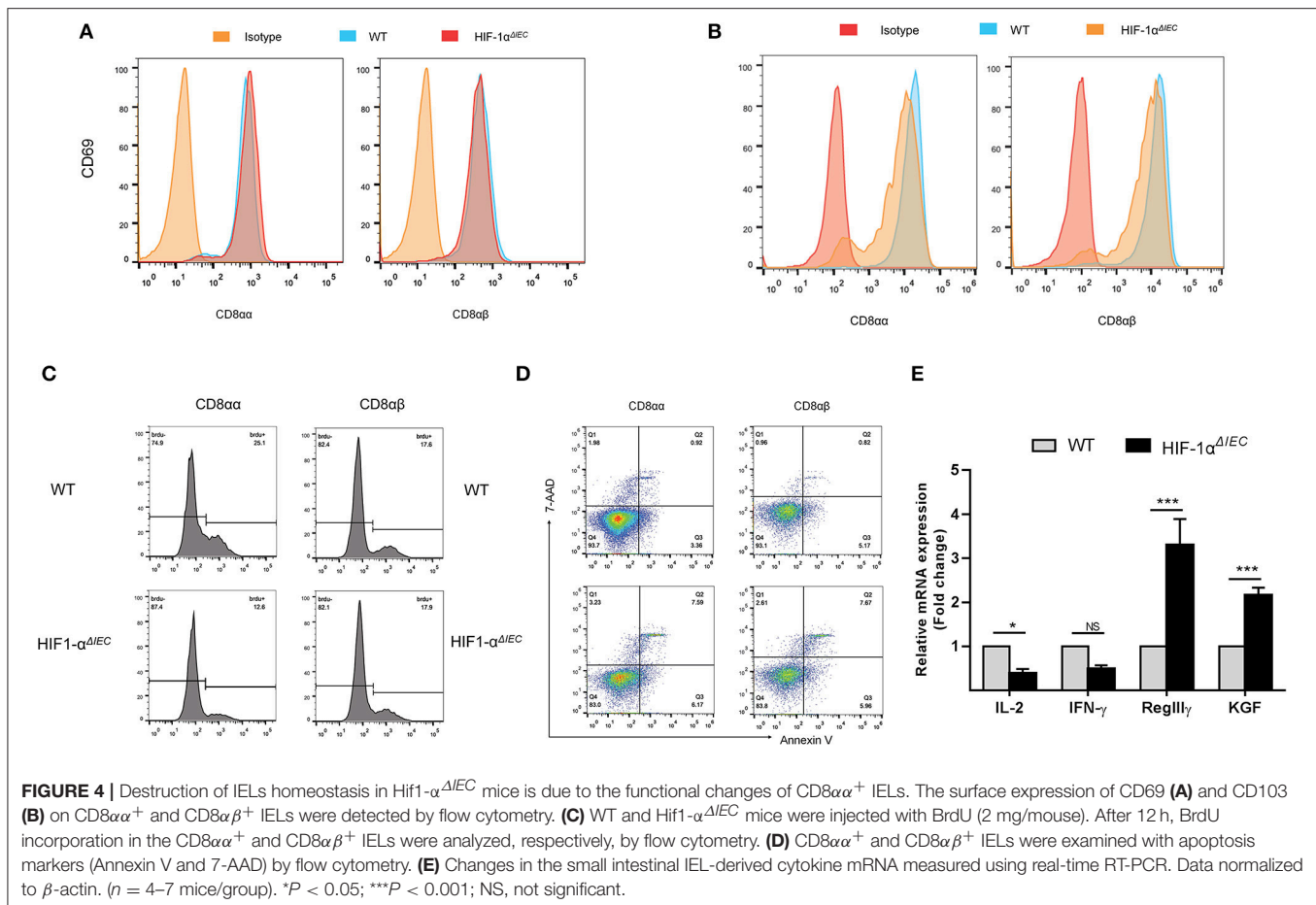
demonstrate that Hif-1 α signaling influences the colon sensitivity to inflammation and establishment of the gut microbiome.

DISCUSSION

In this study, we first found that IEC-specific deletion of Hif1- α resulted in a significant decrease of the IL-7 and IL-15 mRNA and protein expressions in IECs. IL-7 and IL-15 are generally accepted as capital cytokines which involved in regulating the development and propagation of IELs (14, 18). So, we speculate that the loss of Hif1- α in IECs may affect the function of IELs. Next, our data provide the first evidence demonstrating that IEC-specific Hif1- α -deficient mice have undergone tremendous changes in IEL number, population, phenotype, proliferation, apoptosis, cytokine expressions, major microbial species, and inflammatory stimulation, compared to WT mice.

Interactions between IELs and IECs are thought to be crucial for maintaining intestinal mucosal immunity. Previous studies by our group have shown that IELs play an important role in the maintenance of the gut barrier function (37). Also, both experimental and clinical studies demonstrate that IECs may have an important role in mucosal immune responses by positively and negatively regulating IEL numbers and homeostasis. IECs can produce IL-6, IL-10, and other important cytokines for the stimulation and development of IELs. It has also been shown that IECs act as antigen presenting cells for both CD4 $^+$ and CD8 $^+$ IELs (7, 14). Recently, a study from our laboratory showed that TLR2 deficiency contributes to the





impaired innate immune defense and high susceptibility to colitis in mice by changing IELs (13). These changes include a loss of the number of IEL populations and $CD8\alpha\alpha^+$ IELs. Because TLR2 is only expressed in IECs in the mouse small intestine. So, TLR2 $^{-/-}$ mice is actually equivalent to IEC-specific deletion of TLR2 gene. This research once again proved to us that the influences of IEC-derived signaling pathways on the development of IELs.

Hif1- α is regarded as a master regulator of the cellular response to hypoxia and a crucial heterodimeric transcription factor (38). In our previous studies, we focused on the effects of Hif1- α on the intestinal epithelial barrier and colorectal cancer (39–41). However, more and more studies showed that Hif1- α develops a key role in the regulation of many immune cells in recent years. Dang et al. reported that HIF-1 α controls the balance between Tregs and Th17 differentiation (42). Cramer and Walmsley et al. reported that HIF-1 α promotes cell survival and migration, invasiveness, and bacterial killing in myeloid cells (29, 43). As with myeloid cells, DCs are also regulated by HIF-1 α in cell differentiation, migration and survival (44). Therefore, we explored the effect of Hif1- α signaling pathway from IECs on IELs.

Our result found that the total number of IELs in *Hif1- $\alpha^{\Delta IEC}$* mice was increased significantly in the small intestine compared with WT mice. As increased cell numbers could be due to an increase in length of the small intestines. As

expected, we found that the length of small intestines in *Hif1- $\alpha^{\Delta IEC}$* mice is apparently longer than in WT mice, but not in colon. It is reported that global deficiency of Hif1- α resulted in a developmental arrest at E9.0 and die by E10.5 (45, 46). These studies proved that Hif1- α plays an important role in embryonic development and survival. Therefore, this may be one of the reasons why the small intestine of *Hif1- $\alpha^{\Delta IEC}$* mice longer than WT mice. To further investigate the influences of IEC-derived Hif-1 α in directing IEL lineage, we studied the phenotype of IELs. We found that the proportion of IELs subtypes has changed dramatically. It is shown that $CD8\alpha\alpha^+$ IELs decreased significantly while $CD8\alpha\beta^+$ IELs increased accordingly. Through detection of function, we believe that $CD8\alpha\alpha^+$ cells decrease may be due to the increased apoptosis, reduced proliferation and attenuated migration. Similar to our findings, a recent paper by Asis et al. noted that Hif1- α deletion in T cells have also significantly reduce the ratio of $CD8^+$ T cells in tumor-infiltrating lymphocytes (TILs) by controlling effector cell differentiation, migration, and function (47). However, the function of $CD8\alpha\beta^+$ IELs were not changed except for apoptosis. Therefore, we speculate that the increase in $CD8\alpha\beta^+$ IELs may only be due to the decrease in $CD8\alpha\alpha^+$ IELs.

NSAIDs are among the most frequently used medications worldwide for routine relief of pain or fever, to manage various forms of arthritis and inflammatory intestinal disorders,

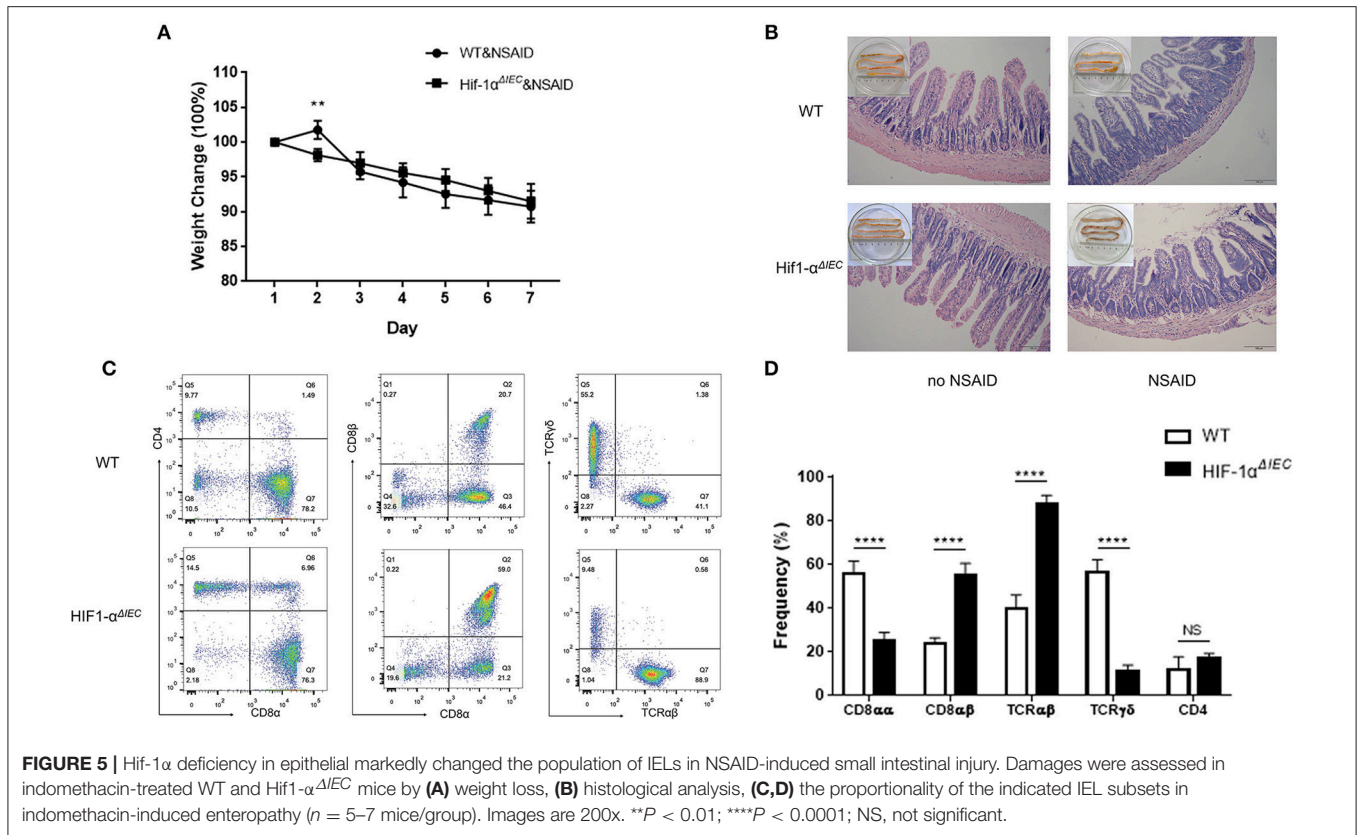


FIGURE 5 | Hif-1 α deficiency in epithelial markedly changed the population of IELs in NSAID-induced small intestinal injury. Damages were assessed in indomethacin-treated WT and Hif1- $\alpha^{\Delta IEC}$ mice by **(A)** weight loss, **(B)** histological analysis, **(C,D)** the proportionality of the indicated IEL subsets in indomethacin-induced enteropathy ($n = 5-7$ mice/group). Images are 200x. ** $P < 0.01$; **** $P < 0.0001$; NS, not significant.

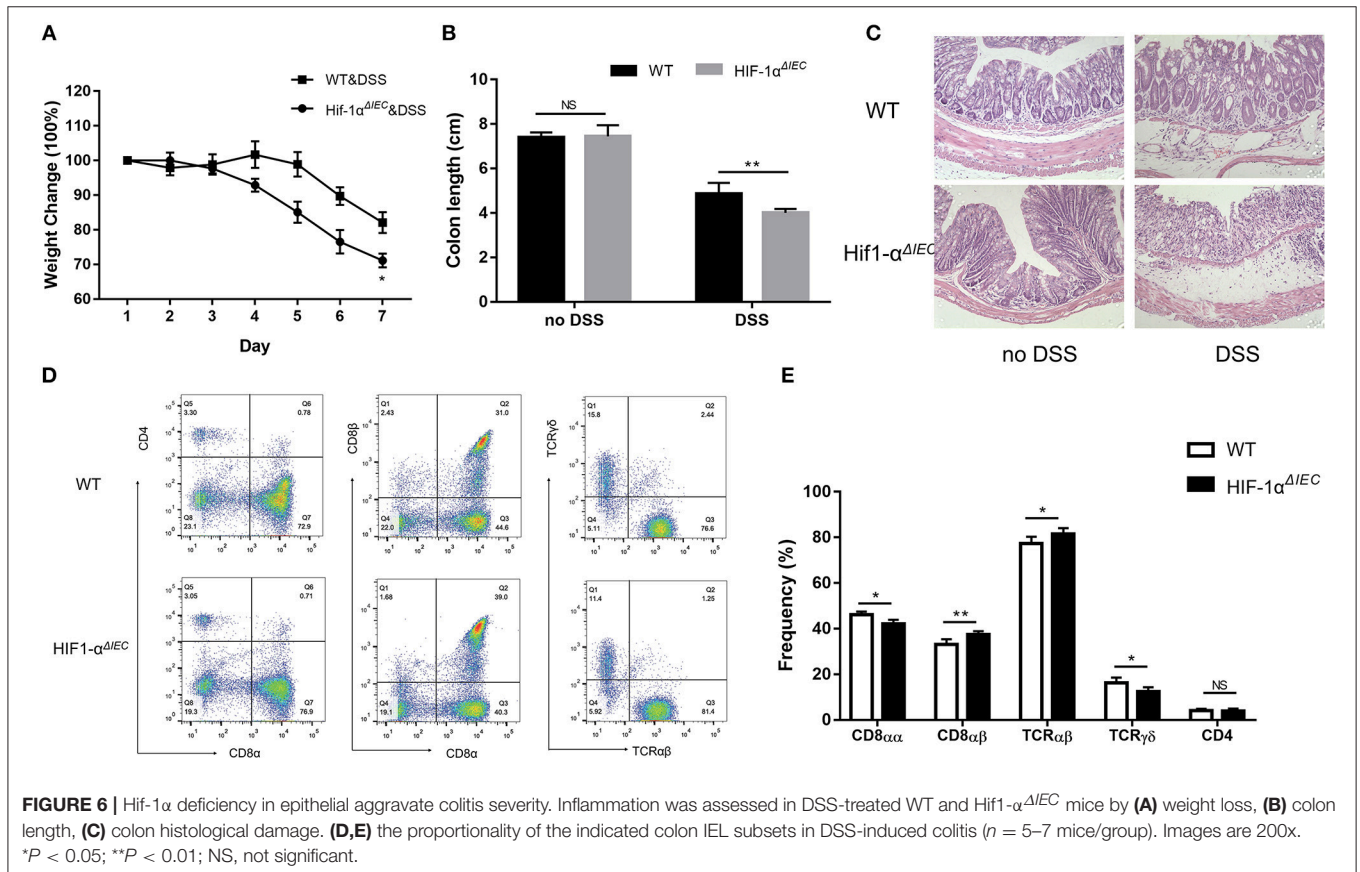
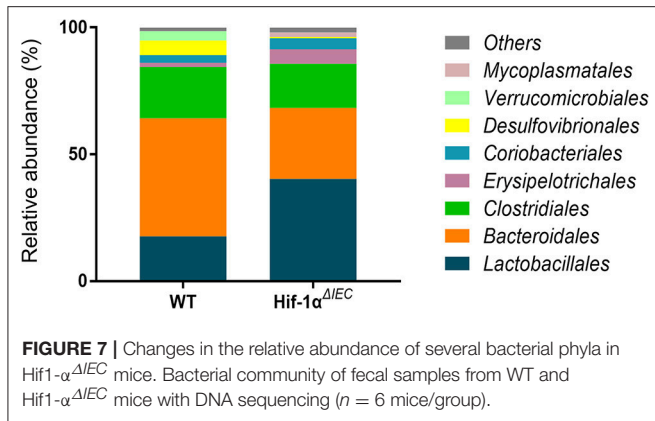


FIGURE 6 | Hif-1 α deficiency in epithelial aggravate colitis severity. Inflammation was assessed in DSS-treated WT and Hif1- $\alpha^{\Delta IEC}$ mice by **(A)** weight loss, **(B)** colon length, **(C)** colon histological damage. **(D,E)** the proportionality of the indicated colon IEL subsets in DSS-induced colitis ($n = 5-7$ mice/group). Images are 200x. * $P < 0.05$; ** $P < 0.01$; NS, not significant.



and to prevent or treat alimentary cancers (48). Recently, it is reported that the prevalence of NSAIDs-induced small intestinal damage was >50% in chronic users (49). Thus, it is meaningful to understand the pathophysiology of NSAIDs-induced enteropathy. Previous studies reported that Hif1- α expression augments inflammation in the proximal colon of sulindac-treated mice (31). However, few researchers study the effect of Hif1- α on small intestinal lesions caused by NSAIDs. In our researches, we found that indomethacin did not produce noticeable macroscopic injuries whether in the intestinal tract of WT or in Hif1- $\alpha^{\Delta IEC}$ mice. However, the IELs homeostasis have changed dramatically between WT and Hif1- $\alpha^{\Delta IEC}$ mice after treatment of indomethacin. Previous studies have shown that the deficiency in TCR $\gamma\delta^+$ IELs in mice leads to an increase in the sensitivity of the small intestine to indomethacin-induced injury (50). We found that TCR $\gamma\delta^+$ IELs in Hif1- $\alpha^{\Delta IEC}$ mice was vigorously reduced in indomethacin-induced intestinal injury. This is indicated that the absence of Hif1- α in IECs aggravated NSAIDs-induced enteropathy, although there is no difference in histological analysis.

IBD is manifested by chronic inflammation of the gastrointestinal tract with significant morbidity and at times, life-threatening complications (51). Current studies suggest that the pathogenesis is complex and diverse. Previous studies reported that the absence of Hif1- α in IECs has aggravated inflammation in IBD (26). In addition, CD8 $\alpha\alpha^+$ T cells also are regulatory cells that suppress IBD symptoms in the gastrointestinal tract (52). In our researches, the change of CD8 $\alpha\alpha^+$ IELs percentage between Hif1- $\alpha^{\Delta IEC}$ and WT mice is not obvious in DSS-induced colitis compared to no DSS treated mice. It may be that the CD8 $\alpha\alpha^+$ IELs have already present significant reduction in Hif1- $\alpha^{\Delta IEC}$ mice compared to WT mice under physiological conditions, which also laid a hidden danger for the induction

of DSS. Because the reduction of CD8 $\alpha\alpha^+$ IELs leads to the susceptibility of mice to enteritis. So, the CD8 $\alpha\alpha^+$ IELs in Hif1- $\alpha^{\Delta IEC}$ mice are reduced to a lesser extent when the enteritis breaks out. These researches are enough to confirm our results on DSS induced colitis. Furthermore, many studies report a link between Hif1- α and bacteria (36). So, we sought to investigate the specific impact of an intestinal epithelial Hif1- α deletion on intestinal microecology. Hif1- $\alpha^{\Delta IEC}$ mice were found to have increased bacterial loads and a shift of species, compared to the WT mice, suggesting that microbial dysbiosis in Hif1- $\alpha^{\Delta IEC}$ mice may sensitize the colonic mucosa to chemical injury induced by DSS. Future studies will focus on the fecal transplantation.

In conclusion, our data indicate that intestinal epithelium Hif1- α plays a fundamental role in IELs homeostasis through the functional change of CD8 $\alpha\alpha^+$ IELs on proliferation, apoptosis and immigration. Simultaneously, our study also suggests that IEC-derived Hif1- α may represent a master regulator of enteritis and intestinal microbiota. There are mutual interactions between Hif1- α , CD8 $\alpha\alpha^+$ IELs and the microbiome that still remain to be fully understood. Although the complex regulatory network still needs to be fully elucidated, our findings are important for a better understanding on the crosstalk between LECs and IELs through Hif1- α .

ETHICS STATEMENT

All animal procedures were performed under the guidelines of the Institutional Animal Care and Use Committee of Third Military Medical University.

AUTHOR CONTRIBUTIONS

LS and TL contributed equally to this work and conceived the study and analyzed the data. HT, KY, YM, MY, and YQ performed the research. PX, WX, and HY wrote the manuscript.

FUNDING

This research was supported by grants from the National Natural Science Foundation of China (NSFC 81873933 to LS); The Basic Science and Frontier Technology Project of Chongqing for YQ (cstc 2017jcyjA1185); and NSFC 81330013 to HY, NSFC 81470803 to WX, NSFC 81370054 to Yujiao Cai).

ACKNOWLEDGMENTS

We thank professor Lin Chen for technical assistance with Hif1- $\alpha^{\Delta IEC}$ mice.

REFERENCES

- Maloy KJ, Powrie F. Intestinal homeostasis and its breakdown in inflammatory bowel disease. *Nature*. (2011) 474:298–306. doi: 10.1038/nature10208
- Artis D. Epithelial-cell recognition of commensal bacteria and maintenance of immune homeostasis in the gut. *Nat Rev Immunol*. (2008) 8:411–20. doi: 10.1038/nri2316
- Zaph C, Troy AE, Taylor BC, Berman-Booty LD, Guild KJ, Du Y, et al. Epithelial-cell-intrinsic IKK-beta expression regulates intestinal

- immune homeostasis. *Nature*. (2007) 446:552–6. doi: 10.1038/nature05590
4. Nenci A, Becker C, Wullaert A, Gareus R, van Loo G, Danese S, et al. Epithelial NEMO links innate immunity to chronic intestinal inflammation. *Nature*. (2007) 446:557–61. doi: 10.1038/nature05698
 5. Allakhverdi Z, Comeau MR, Jessup HK, Yoon BR, Brewer A, Chartier S, et al. Thymic stromal lymphopoietin is released by human epithelial cells in response to microbes, trauma, or inflammation and potentially activates mast cells. *J Exp Med*. (2007) 204:253–8. doi: 10.1084/jem.20062211
 6. Woof JM, Mestecky J. Mucosal immunoglobulins. *Immunol Rev*. (2005) 206:64–82. doi: 10.1111/j.0105-2896.2005.00290.x
 7. Yang H, Gumucio DL, Teitelbaum DH. Intestinal specific overexpression of interleukin-7 attenuates the alteration of intestinal intraepithelial lymphocytes after total parenteral nutrition administration. *Ann Surg*. (2008) 248:849–56. doi: 10.1097/SLA.0b013e31818a1522
 8. Agace WW. T-cell recruitment to the intestinal mucosa. *Trends Immunol*. (2008) 29:514–22. doi: 10.1016/j.it.2008.08.003
 9. Kunisawa J, Kurashima Y, Higuchi M, Gohda M, Ishikawa I, Ogahara I, et al. Sphingosine 1-phosphate dependence in the regulation of lymphocyte trafficking to the gut epithelium. *J Exp Med*. (2007) 204:2335–48. doi: 10.1084/jem.20062446
 10. Beagley KW, Husband AJ. Intraepithelial lymphocytes: origins, distribution, and function. *Crit Rev Immunol*. (1998) 18:237–54. doi: 10.1615/CritRevImmunol.v18.i3.40
 11. Olivares-Villagomez D, Van Kaer L. TL and CD8 α alpha: enigmatic partners in mucosal immunity. *Immunol Lett*. (2010) 134:1–6. doi: 10.1016/j.imlet.2010.09.004
 12. Klose CS, Blatz K, D'Hargues Y, Hernandez PP, Kofoed-Nielsen M, Ripka JF, et al. The transcription factor T-bet is induced by IL-15 and thymic agonist selection and controls CD8 α alpha(+) intraepithelial lymphocyte development. *Immunity*. (2014) 41:230–43. doi: 10.1016/j.immuni.2014.06.018
 13. Qiu Y, Pu A, Zheng H, Liu M, Chen W, Wang W, et al. TLR2-dependent signaling for IL-15 production is essential for the homeostasis of intestinal intraepithelial lymphocytes. *Mediators Inflamm*. (2016) 2016:4281865. doi: 10.1155/2016/4281865
 14. Hayday A, Theodoridis E, Ramsburg E, Shires J. Intraepithelial lymphocytes: exploring the Third Way in immunology. *Nat Immunol*. (2001) 2:997–1003. doi: 10.1038/ni1101-997
 15. Laky K, Lefrancois L, von Freeden-Jeffrey U, Murray R, Puddington L. The role of IL-7 in thymic and extrathymic development of TCR gamma delta cells. *J Immunol*. (1998) 161:707–13.
 16. Watanabe M, Ueno Y, Yajima T, Iwao Y, Tsuchiya M, Ishikawa H, et al. Interleukin 7 is produced by human intestinal epithelial cells and regulates the proliferation of intestinal mucosal lymphocytes. *J Clin Invest*. (1995) 95:2945–53.
 17. Ma LJ, Acero LF, Zal T, Schluns KS. Trans-presentation of IL-15 by intestinal epithelial cells drives development of CD8 α alpha IELs. *J Immunol*. (2009) 183:1044–54. doi: 10.4049/jimmunol.0900420
 18. Okazawa A, Kanai T, Nakamaru K, Sato T, Inoue N, Ogata H, et al. Human intestinal epithelial cell-derived interleukin (IL)-18, along with IL-2, IL-7 and IL-15, is a potent synergistic factor for the proliferation of intraepithelial lymphocytes. *Clin Exp Immunol*. (2004) 136:269–76. doi: 10.1111/j.1365-2249.2004.02431.x
 19. Navabi N, Whitt J, Wu SE, Woo V, Moncivaiz J, Jordan MB, et al. Epithelial histone deacetylase 3 instructs intestinal immunity by coordinating local lymphocyte activation. *Cell Rep*. (2017) 19:1165–75. doi: 10.1016/j.celrep.2017.04.046
 20. Sitkovsky MV, Lukashev D, Apasov S, Kojima H, Koshiba M, Caldwell C, et al. Physiological control of immune response and inflammatory tissue damage by hypoxia-inducible factors and adenosine A2A receptors. *Annu Rev Immunol*. (2004) 22:657–82. doi: 10.1146/annurev.immunol.22.012703.104731
 21. Eltzschig HK, Abdulla P, Hoffman E, Hamilton KE, Daniels D, Schonfeld C, et al. HIF-1-dependent repression of equilibrative nucleoside transporter (ENT) in hypoxia. *J Exp Med*. (2005) 202:1493–505. doi: 10.1084/jem.20050177
 22. Rosenberger P, Schwab JM, Mirakaj V, Masekowsky E, Mager A, Morote-Garcia JC, et al. Hypoxia-inducible factor-dependent induction of netrin-1 dampens inflammation caused by hypoxia. *Nat Immunol*. (2009) 10:195–202. doi: 10.1038/ni.1683
 23. Shah YM. The role of hypoxia in intestinal inflammation. *Mol Cell Pediatr*. (2016) 3:1. doi: 10.1186/s40348-016-0030-1
 24. Masoud GN, Li W. HIF-1 α pathway: role, regulation and intervention for cancer therapy. *Acta Pharm Sin B*. (2015) 5:378–89. doi: 10.1016/j.apsb.2015.05.007
 25. Nagle DG, Zhou YD. Natural product-derived small molecule activators of hypoxia-inducible factor-1 (HIF-1). *Curr Pharm Des*. (2006) 12:2673–88. doi: 10.2174/13816120677698783
 26. Karhausen J, Furuta GT, Tomaszewski JE, Johnson RS, Colgan SP, Haase VH. Epithelial hypoxia-inducible factor-1 is protective in murine experimental colitis. *J Clin Invest*. (2004) 114:1098–106. doi: 10.1172/JCI200421086
 27. Cummins EP, Seeballuck F, Keely SJ, Mangan NE, Callanan JJ, Fallon PG, et al. The hydroxylase inhibitor dimethylxylglycine is protective in a murine model of colitis. *Gastroenterology*. (2008) 134:156–65. doi: 10.1053/j.gastro.2007.10.012
 28. Sun M, He C, Wu W, Zhou G, Liu F, Cong Y, et al. Hypoxia inducible factor-1 α -induced interleukin-33 expression in intestinal epithelia contributes to mucosal homeostasis in inflammatory bowel disease. *Clin Exp Immunol*. (2017) 187:428–40. doi: 10.1111/cei.12896
 29. Fluck K, Breves G, Fandrey J, Winning S. Hypoxia-inducible factor 1 in dendritic cells is crucial for the activation of protective regulatory T cells in murine colitis. *Mucosal Immunol*. (2016) 9:379–90. doi: 10.1038/mi.2015.67
 30. Clambey ET, McNamee EN, Westrich JA, Glover LE, Campbell EL, Jedlicka P, et al. Hypoxia-inducible factor-1 α -dependent induction of FoxP3 drives regulatory T-cell abundance and function during inflammatory hypoxia of the mucosa. *Proc Natl Acad Sci USA*. (2012) 109:E2784–93. doi: 10.1073/pnas.1202366109
 31. Mladenova DN, Dahlstrom JE, Tran PN, Benthani F, Bean EG, Ng I, et al. HIF1 α deficiency reduces inflammation in a mouse model of proximal colon cancer. *Dis Model Mech*. (2015) 8:1093–103. doi: 10.1242/dmm.019000
 32. Ji T, Xu C, Sun L, Yu M, Peng K, Qiu Y, et al. Aryl hydrocarbon receptor activation down-regulates IL-7 and reduces inflammation in a mouse model of DSS-induced colitis. *Dig Dis Sci*. (2015) 60:1958–66. doi: 10.1007/s10620-015-3632-x
 33. Qiu Y, Wang W, Xiao W, Yang H. Role of the intestinal cytokine microenvironment in shaping the intraepithelial lymphocyte repertoire. *J Leukoc Biol*. (2015) 97:849–57. doi: 10.1189/jlb.3RU1014-465R
 34. Izcue A, Coombes JL, Powrie F. Regulatory lymphocytes and intestinal inflammation. *Annu Rev Immunol*. (2009) 27:313–38. doi: 10.1146/annurev.immunol.021908.132657
 35. Lu Z, Lu Y, Wang X, Wang F, Zhang Y. Activation of intestinal GR-FXR and PPAR α -UGT signaling exacerbates ibuprofen-induced enteropathy in mice. *Arch Toxicol*. (2018) 92:1249–65. doi: 10.1007/s00204-017-2139-y
 36. Santos S, Andrade DJ. HIF-1 α and infectious diseases: a new frontier for the development of new therapies. *Rev Inst Med Trop Sao Paulo*. (2017) 59:e92. doi: 10.1590/s1678-9946201759092
 37. Qiu Y, Yu M, Yang Y, Sheng H, Wang W, Sun L, et al. Disturbance of intraepithelial lymphocytes in a murine model of acute intestinal ischemia/reperfusion. *J Mol Histol*. (2014) 45:217–27. doi: 10.1007/s10735-013-9544-1
 38. Yee KM, Spivak-Kroizman TR, Powis G. HIF-1 regulation: not so easy come, easy go. *Trends Biochem Sci*. (2008) 33:526–34. doi: 10.1016/j.tibs.2008.08.002
 39. Yang S, Yu M, Sun L, Xiao W, Yang X, Sun L, et al. Interferon- γ -induced intestinal epithelial barrier dysfunction by NF- κ B/HIF-1 α pathway. *J Interferon Cytokine Res*. (2014) 34:195–203. doi: 10.1089/jir.2013.0044
 40. Wang WS, Liang HY, Cai YJ, Yang H. DMOG ameliorates IFN- γ -induced intestinal barrier dysfunction by suppressing PHD2-dependent HIF-1 α degradation. *J Interferon Cytokine Res*. (2014) 34:60–9. doi: 10.1089/jir.2013.0040
 41. Qiu Y, Zheng H, Sun LH, Peng K, Xiao WD, Yang H. Hypoxia-inducible factor-1 modulates upregulation of muT homolog-1 in colorectal cancer. *World J Gastroenterol*. (2015) 21:13447–56. doi: 10.3748/wjg.v21.i48.13447
 42. Dang EV, Barbi J, Yang HY, Jinasena D, Yu H, Zheng Y, et al. Control of T(H)17/T(reg) balance by hypoxia-inducible factor 1. *Cell*. (2011) 146:772–84. doi: 10.1016/j.cell.2011.07.033

43. Cramer T, Yamanishi Y, Clausen BE, Forster I, Pawlinski R, Mackman N, et al. HIF-1 α is essential for myeloid cell-mediated inflammation. *Cell*. (2003) 112:645–57. doi: 10.1016/S0092-8674(03)00154-5
44. Kohler T, Reizis B, Johnson RS, Weighardt H, Forster I. Influence of hypoxia-inducible factor 1 α on dendritic cell differentiation and migration. *Eur J Immunol*. (2012) 42:1226–36. doi: 10.1002/eji.201142053
45. Bishop T, Ratcliffe PJ. HIF hydroxylase pathways in cardiovascular physiology and medicine. *Circ Res*. (2015) 117:65–79. doi: 10.1161/CIRCRESAHA.117.305109
46. Semenza GL. Hypoxia-inducible factor 1: control of oxygen homeostasis in health and disease. *Pediatr Res*. (2001) 49:614–7. doi: 10.1203/00006450-200105000-00002
47. Palazon A, Tyrakis PA, Macias D, Velica P, Rundqvist H, Fitzpatrick S, et al. An HIF-1 α /VEGF-A axis in cytotoxic T cells regulates tumor progression. *Cancer Cell*. (2017) 32:669–83. doi: 10.1016/j.ccell.2017.10.003
48. Whitfield-Cargile CM, Cohen ND, Chapkin RS, Weeks BR, Davidson LA, Goldsby JS, et al. The microbiota-derived metabolite indole decreases mucosal inflammation and injury in a murine model of NSAID enteropathy. *Gut Microbes*. (2016) 7:246–61. doi: 10.1080/19490976.2016.1156827
49. Higashimori A, Watanabe T, Nadatani Y, Takeda S, Otani K, Tanigawa T, et al. Mechanisms of NLRP3 inflammasome activation and its role in NSAID-induced enteropathy. *Mucosal Immunol*. (2016) 9:659–68. doi: 10.1038/mi.2015.89
50. Sumida H, Lu E, Chen H, Yang Q, Mackie K, Cyster JG. GPR55 regulates intraepithelial lymphocyte migration dynamics and susceptibility to intestinal damage. *Sci Immunol*. (2017) 2:eaa01135 doi: 10.1126/sciimmunol.aao1135
51. Sun L, Wang W, Xiao W, Yang H. The roles of cathelicidin LL-37 in inflammatory bowel disease. *Inflamm Bowel Dis*. (2016) 22:1986–91. doi: 10.1097/MIB.0000000000000804
52. Yu S, Bruce D, Froicu M, Weaver V, Cantorna MT. Failure of T cell homing, reduced CD4/CD8 α intraepithelial lymphocytes, and inflammation in the gut of vitamin D receptor KO mice. *Proc Natl Acad Sci USA*. (2008) 105:20834–9. doi: 10.1073/pnas.0808700106

Conflict of Interest Statement: The authors declare that the research was conducted in the absence of any commercial or financial relationships that could be construed as a potential conflict of interest.

Copyright © 2019 Sun, Li, Tang, Yu, Ma, Yu, Qiu, Xu, Xiao and Yang. This is an open-access article distributed under the terms of the Creative Commons Attribution License (CC BY). The use, distribution or reproduction in other forums is permitted, provided the original author(s) and the copyright owner(s) are credited and that the original publication in this journal is cited, in accordance with accepted academic practice. No use, distribution or reproduction is permitted which does not comply with these terms.