



Evaluating STAT5 Phosphorylation as a Mean to Assess T Cell Proliferation

Michael Bitar^{1*†}, Andreas Boldt^{1†}, Marie-Theres Freitag¹, Bernd Gruhn², Ulrike Köhl^{1,3,4} and Ulrich Sack¹

¹ Medical Faculty, Institute of Clinical Immunology, University of Leipzig, Leipzig, Germany, ² Department of Pediatrics, Jena University Hospital, Jena, Germany, ³ Hannover Medical School, Institute of Cellular Therapeutics, Hannover, Germany, ⁴ Fraunhofer Institute for Immunology and Cell Therapy (IZI), Leipzig, Germany

OPEN ACCESS

Edited by:

Roshini Sarah Abraham,
Nationwide Children's Hospital,
United States

Reviewed by:

Megan K. Levings,
University of British Columbia, Canada
Jose R. Regueiro,
Complutense University of
Madrid, Spain
Armando Estrada,
The University of Texas at El Paso,
United States

*Correspondence:

Michael Bitar
michael.bitar@medizin.uni-leipzig.de

[†]These authors have contributed
equally to this work

Specialty section:

This article was submitted to
Primary Immunodeficiencies,
a section of the journal
Frontiers in Immunology

Received: 20 December 2018

Accepted: 18 March 2019

Published: 05 April 2019

Citation:

Bitar M, Boldt A, Freitag M-T,
Gruhn B, Köhl U and Sack U (2019)
Evaluating STAT5 Phosphorylation as
a Mean to Assess T Cell Proliferation.
Front. Immunol. 10:722.
doi: 10.3389/fimmu.2019.00722

Here we present a simple and sensitive flow cytometric—based assay to assess T cell proliferation. Given the critical role STAT5A phosphorylation in T cell proliferation, we decided to evaluate phosphorylation of STAT5A as an indicator of T cell proliferation. We determined pSTAT5A in T cell treated with either CD3/CD28 or PHA. After stimulation, T cells from adult healthy donors displayed a strong long-lasting phosphorylation of STAT5A, reaching a peak value after 24 h. The median fluorescence intensity (MFI) of pSTAT5A increased from 112 ± 17 to 512 ± 278 (CD3/CD28) (24 h) and to 413 ± 123 (PHA) (24 h), the IL-2 receptor- α (CD25) expression was greatly enhanced and after 72 h T cell proliferation amounted to $52.3 \pm 10.3\%$ (CD3/CD28) and to $48.4 \pm 9.7\%$ (PHA). Treatment with specific JAK3 and STAT5 inhibitors resulted in a complete blockage of phosphorylation of STAT5A, CD25 expression, and suppression of T cell proliferation. Compared with currently available methods, STAT5A phosphorylation is well-suited to predict T cell proliferation. Moreover, the method presented here is not very time consuming (several hours) and delivers functional information from which conclusions about T cell proliferation can be drawn.

Keywords: STAT5 activation, T cell proliferation, T cell activation, flow cytometry, CD25

INTRODUCTION

The decision of T cells to start an appropriate activation- proliferation program upon encountering an antigen presented by an antigen presenting cell is a critical step of the adaptive immune reaction (1, 2).

Following engagement of the T cell receptor (TCR), three transcription factors, namely nuclear factor of activated T cells (NFAT), nuclear factor kappa-light-chain-enhancer of activated B cells (NF- κ B), and activator protein 1 (AP-1) will be activated (3, 4). The interaction between these molecules leads to the synthesis of important cytokines such as Interleukin-2 (IL-2) and Interferon gamma (IFN- γ) (5), as well as the up-regulation of Janus kinase 3 (Jak3) expression (**Figure 1**) (4, 6–8).

TCR stimulated production of IL-2 and other cytokines starts the cascade of signaling events, leading to the activation of Jak3, which in turn phosphorylates signal transducer and activator of transcription 5 (STAT5) (**Figure 1**) (8). STAT5 consists of two highly related proteins, STAT5A and STAT5B, which share over 90% identity and differ in their carboxyl (C)—terminus (9, 10). Both STAT5A and STAT5B regulated genes are involved in cell proliferation, survival, differentiation and apoptosis (10, 11).

Phosphorylated STAT5 (pSTAT5) translocates into the nucleus to regulate transcription of the target genes including the IL-2 receptor α (IL-2R α) (CD25) (**Figure 1**) (5, 12–14), a prerequisite for the formation of the high affinity IL-2R $\alpha\beta\gamma$ (12, 15, 16). The induction of the functional system composed of IL-2 and the high affinity IL-2R is critical for G1 progression and for mounting an effective immune response (**Figure 1**) (12, 17).

One standard procedure to quantify cellular immune responses to antigens is based on the measurement of cell proliferation (1, 2). Today, the assays are mainly carried out by the use of flow cytometry (FCM). One of the methods consists of serial halving of the fluorescence intensity of the vital dye (18). The current assays have many drawbacks including the need of bulk cultures and long incubation times (3–5 days). This is especially inconvenient when rapid diagnosis is desirable. Therefore, a fast and simple flow cytometric method enabling the early and reliable detection of lymphocyte entry into an activation program would be of great interest.

In this work, we asked whether phosphorylation of STAT5A is an appropriate candidate to predict the behavior of T cells upon activation. We established and validated a rapid, sensitive, flow cytometric based pSTAT5A assay to detect T cell proliferation. We showed that there was a strong correlation between the early CD3/CD28 or polyclonal mitogen phytohemagglutinin (PHA) induced STAT5A phosphorylation and T cells proliferation. Moreover, due to its simplicity and robustness, the flow cytometric based pSTAT5 assay is especially appropriate to rapidly assess primary immune deficiencies (PIDs) associated with STAT5 defects including autoimmune diseases, CD25 deficiency and T cells proliferation defects (11, 19–22).

METHODS AND MATERIAL

Collection of Blood Samples

Heparinized peripheral blood samples (7 ml) were taken from 19 adult healthy donors (median of age = 31), at the Institute of Clinical Immunology at the University of Leipzig. Additionally, we analyzed a blood from a patient selected by their clinical representations: anemia, clubfeet, and pancytopenia. Written informed consent was obtained from all included individuals. Sample collection and processing were completed according to the Medical Faculty, University of Leipzig standard operating guidelines and regulations.

Isolation of PBMCs and Staining With Violet Proliferation Dye 450

Peripheral blood mononuclear cells (PBMCs) were isolated from fresh peripheral blood samples by density gradient centrifugation over Ficoll-Hypaque (Pan Biotech, Germany), as described previously (23, 24). PBMCs (1×10^7 cells/ml) were diluted with phosphate-buffered saline (PBS, pH 7.2)

(Gibco life Technologies, USA) and stained with Violet Proliferation Dye 450 (VPD450) ($3 \mu\text{M}$) (BD Biosciences) for 15 min at 37°C . Subsequently, PBMCs were washed and re-suspended in RPMI 1,640 containing 10% fetal bovine serum, penicillin (1×10^5 mg/ml) and streptomycin (1×10^5 mg/ml) (Gibco life Technologies, USA) and finally adjusted to 1×10^6 cells/ml.

Stimulation of PBMCs and Treatment With Specific Inhibitors

PBMCs (1×10^6 cells/ml) were seeded into 48 well cell culture plates (5×10^5 cells/well) at 37°C . After 2 h, PBMCs were stimulated with either CD3/CD28 (eBioscience, clones OKT3, CD28.2) (100 ng/ml) or with PHA (Sigma) (10 $\mu\text{g/ml}$).

Following pharmacological inhibitors: JAK3 inhibitor [JAK3i, 4-(4'-Hydroxyphenyl) amino-6, 7-dimethoxyquinazoline] ($12 \mu\text{M}$), STAT5 inhibitor [STAT5i, N'-((4-Oxo-4H-chromen-3-yl) methylene) nicotinohydrazide] ($35 \mu\text{M}$), Cyclosporin A (CsA) (500 nM) (Calbiochem, USA) or DMSO (0.07%) were added 2 h before stimulating the cells.

In parallel, cells were either cultured for 24 h to determine pSTAT5A and CD25 in T cells or for 72 h to determine T cell proliferation in a humidified atmosphere of 5% CO_2 at 37°C .

Determination of pSTAT5A and CD25 Expression in T Cells by Flow Cytometry

Cultured PBMCs were harvested after 24 h, pelleted by centrifugation, lysed and fixed by using "lyse and fix" buffer (BD Biosciences) and incubated at 37°C in a water bath for 12 min. The cells were centrifuged, the supernatant was discarded and the pellet was washed with 4 mL PBS.

The samples were permeabilized by using cold perm buffer III (1 ml) (BD Biosciences) and left on ice for 30 min. The pellet was washed three times with a fetal bovine serum stain buffer (FBS) (2 ml) (BD Biosciences) and finally re-suspended in 200 μl FBS. For flow cytometric analysis, the T cells were stained with PerCP-CyTM 5.5 mouse anti-human CD3 (2.5 μL , clone UCHT1, BD Biosciences), PE mouse anti-human CD25 (5 μL , clone 2A3, BD Biosciences) Alexa Fluor 647 mouse anti human -STAT5A (10 μL , PY694, Clone 47/Stat5, BD Biosciences) and Alexa Fluor 647 mouse anti human FoxP3 (10 μL , clone 259D, c7, BD Biosciences). Mouse IgG1-k- Alexa Fluor 647 isotype control (10 μL , clone MOPC-21, BD Biosciences) was used for assessing the background staining of cells. After 1 h of incubation in the dark at room temperature, the cells were washed with 2 mL stain buffer, centrifuged and were suspended in 300 μL of stain buffer. To analyze STAT5A phosphorylation: based on the following gating strategy (1) forward scatter (FSC) vs. side scatter (SSC) and (2) CD3 vs. SSC, the T cells (CD3⁺) were separated (**Supplementary Figure 1**). Now, after clear separation of T cells from the non-T cells, 30,000 CD3⁺ T cells per sample were detected. The phosphorylation of STAT5A was calculated as median fluorescence intensity (MFI) in CD3⁺ T cells.

Abbreviations: TCR, T cell receptor; NFAT, nuclear factor of activated T cells; IL-2, Interleukin-2; Jak3, Janus kinase 3; pSTAT5, phosphorylated signal transducer and activator of transcription 5; CD25, IL-2 receptor α ; FCM, flow cytometry; PHA, phytohemagglutinin; PBMCs, Peripheral blood mononuclear cells; Jak3i, Janus kinase 3 inhibitor; STAT5i, signal transducer and activator of transcription 5 inhibitor; CsA, Cyclosporin A; MFI, median fluorescence intensity.

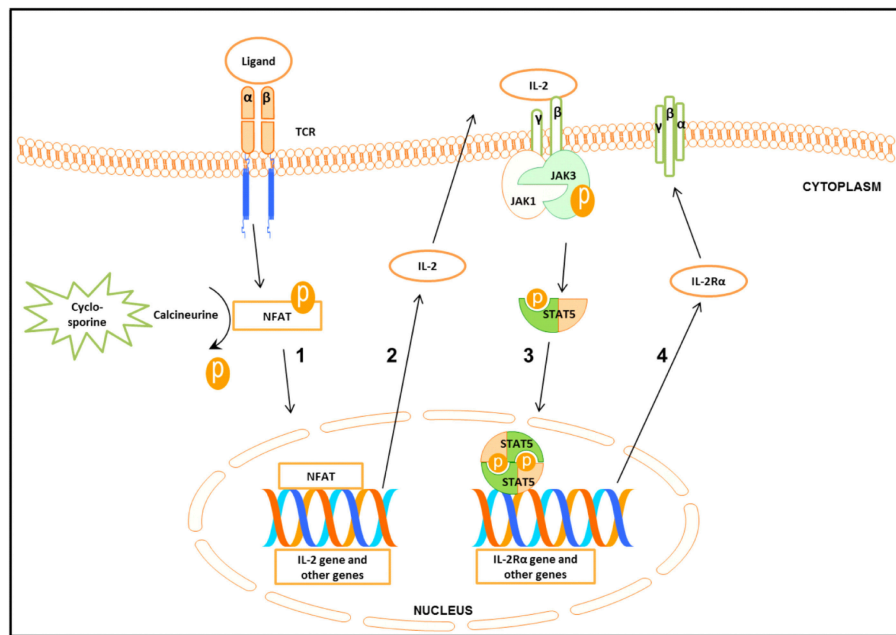


FIGURE 1 | Schematic presentation of the signal cascade following T cells stimulation **(1)** Binding of the ligand to the T cell receptor (TCR) leads to the activation of nuclear factor of activated T cell (NFAT). Cyclosporine by inhibiting calcineurine prevents activation of NFAT. Activated NFAT translocates to the nucleus where it activates target genes including IL-2. **(2-3)** Binding of IL-2 to IL-2 receptor $\beta\gamma$ (IL-2R $\beta\gamma$) leads to the activation of Janus kinase 3 (Jak3) which in turn phosphorylates signal transducer and activator of transcription 5 (STAT5). Phosphorylated STAT5 forms homo- and heterodimers that translocate to the nucleus, leading to the transcription of target genes including the IL-2R α gene. **(4)** IL-2R α together with IL-2R $\beta\gamma$ forms the high affinity IL-2R $\beta\gamma\alpha$.

Determination of T Cell Proliferation by Flow Cytometry

Cultured PBMCs were harvested after 72 h and washed with 2 mM EDTA PBS. The pellet was re-suspended in 200 μ l PBS and stained with APC-H7 mouse anti-human CD45 (2.5 μ l, clone 2D1, BD Biosciences) and FITC mouse anti-human CD3 (5 μ l, clone SK7, BD Biosciences) at 37°C. After 15 min, cells were washed with 2 mL 2 mM EDTA PBS, centrifuged and suspended in 300 μ l PBS.

To analyze T cell proliferation: based on two lymphocyte collection gates (1) FSC vs. SSC and (2) CD45 vs. SSC (mathematical connected by AND-operation) the T cells (CD3⁺) were separated in a third dot plot (CD3 vs. SSC). Now, the decrease of VPD450 dye intensity in proliferated CD3⁺ cells was measured, 50,000 CD3⁺ cells per sample were detected (**Supplementary Figure 2**). Data analysis was done using FlowJo.7.6.5 software (Ashland, OR, USA) (25).

Cell Viability

7-Amino-Actinomycin D (7-AAD) staining was used to determine cell viability. 7-AAD is excluded by viable cells but can penetrate cell membranes of dead cells. 7-AAD (10 μ l) (BD Biosciences) was added to pre-stained T cells (as described above) for 10 min, before cells were analyzed by flow cytometry.

Flow Cytometric Analysis

FACSCanto II based flow cytometry was conducted to measure the samples as previously described (26, 27). Briefly, the system

was set up with three lasers: a violet laser 405 nm, a blue laser 488 nm, and a red laser 647 nm. Prior to running samples, the instrument was calibrated using calibration beads (BD Biosciences). BD FACSDiva software was used for acquisition of events.

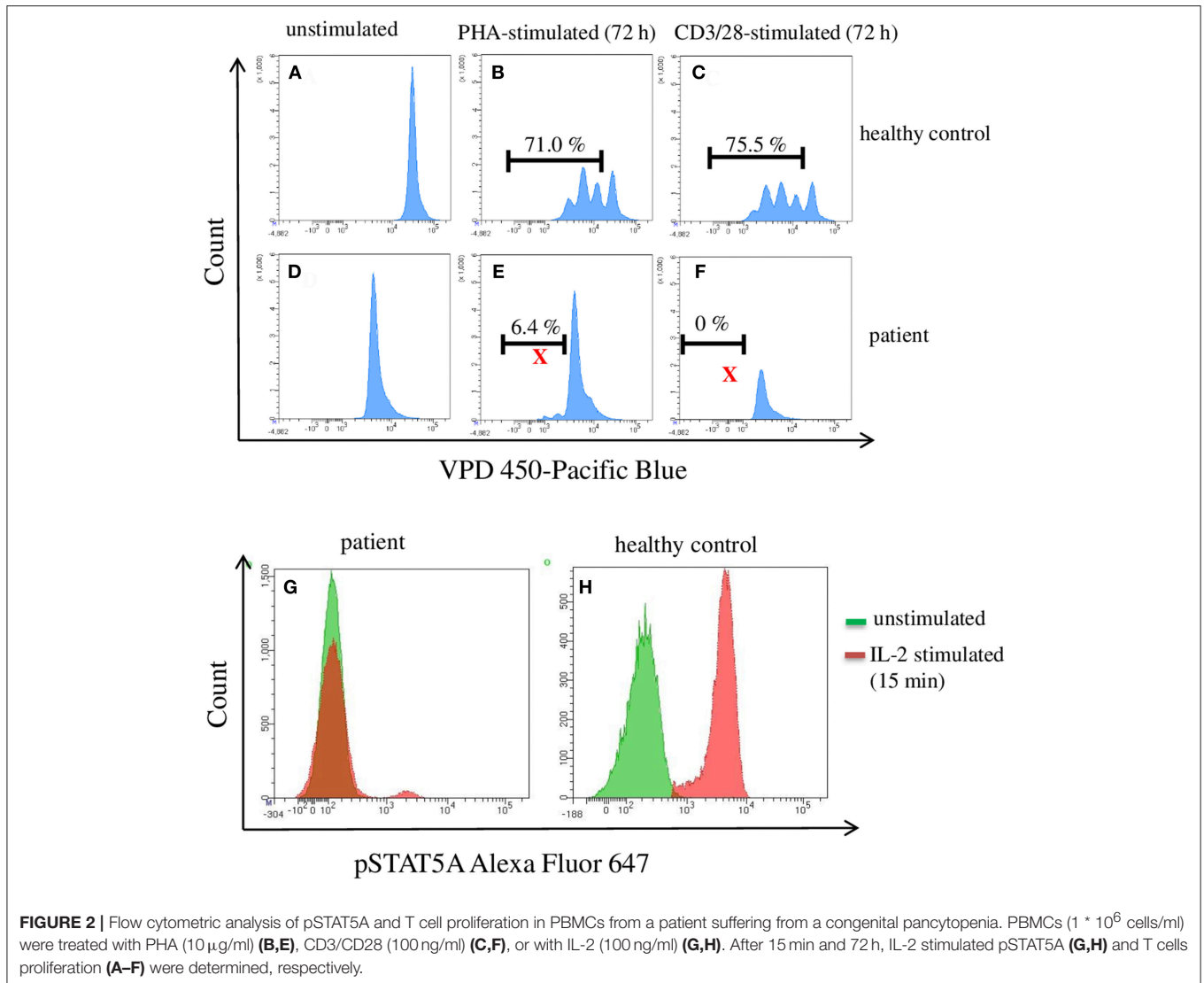
Determination of IL-2 Production in PBMCs

PBMCs (1 * 10⁶ cells/ml) were cultured with PHA (Sigma) (10 μ g/ml) for different times (12, 24, 48, 72 h). The cell supernatants were then collected and assayed for IL-2 by enzyme immunoassay (EIA; R&D system, Minneapolis, USA).

Adaptation of Methods to DIN EN ISO 15189 Requirements

To exclude or diminish false positive or false negative results, the international standard DIN EN ISO 15189 recommended proceedings to fulfill highest requirements for the quality and competency of medical laboratories. This includes the validation of all data by performing intra-assay and inter-assay precision (28).

Note: in case of using two or more different FACS Canto, differences in technical adjustments among different devices leading to various results in the mean fluorescence and should be considered. Therefore, a transfer of the instrument setting among the devices has to be performed. Especially the voltage power in each channel in all devices should be equilibrated by the use of calibrate beads to get comparable MFI signals.



Statistical Analysis

The statistical analysis was performed using the Graph Pad Prism 5 software (Graph Pad Prism software, Inc., San Diego, CA, USA). Curves were evaluated by the non-parametric Friedman test. The adjusted *P*-values were deemed by Wilcoxon's test (ns not significant, **P* \leq 0.05; ***P* \leq 0.01; ****P* \leq 0.001). Correlations were calculated with Spearman's correlation coefficient.

RESULTS

Immunodeficiency Is Accompanied by a Diminished Proliferation of T Cells and Down Regulation of pSTAT5A

An infant (female, 2 months old) of healthy, non-consanguine parents exhibited clinical symptoms such as umbilical hernia and clubfeet. Laboratory examinations revealed congenital pancytopenia: 0% neutrophils, 0% thrombocytes, and 100% naive T cells. Nor B- or NK-cells could not be detected. For analyzing

the function/proliferation of the T cells, we stimulated with CD3/CD28 or PHA (72 h) to investigate proliferation and with IL-2 (15 min) to measure pSTAT5A. As shown in **Figure 2**, the phosphorylation of STAT5A was completely deficient in patient T cells accompanied by severely limited T cell proliferation. Trio-exome sequencing did not reveal any abnormalities and excluded genetic defects in: IKZF1, GATA2, SAMD9, and SAMD9L. Finally, 14 month after successful unrelated bone marrow transplantation, the patient is in a very good clinical condition. Based on these data, we investigated in how far phosphorylation of STAT5A is a valid parameter to predict proliferation of T cells.

Concentration and Time Dependent STAT5 Phosphorylation and Proliferation

First, we tested the influence of different CD3/CD28 and PHA concentrations on STAT5A phosphorylation and T cell proliferation (**Figure 3**). We found that CD3/CD28 at a very low concentration of 0.25 ng/ml was sufficient to induce maximal

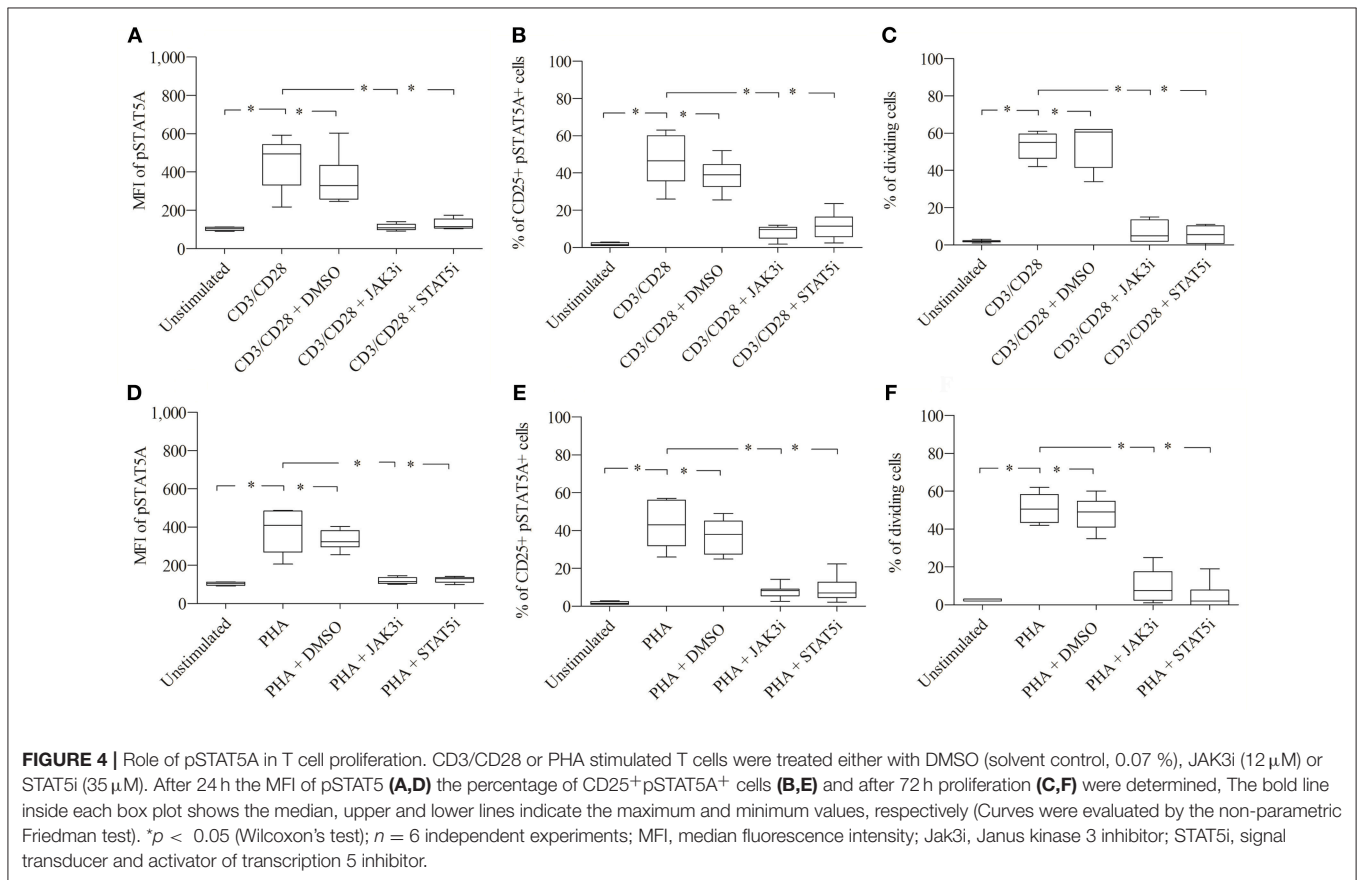
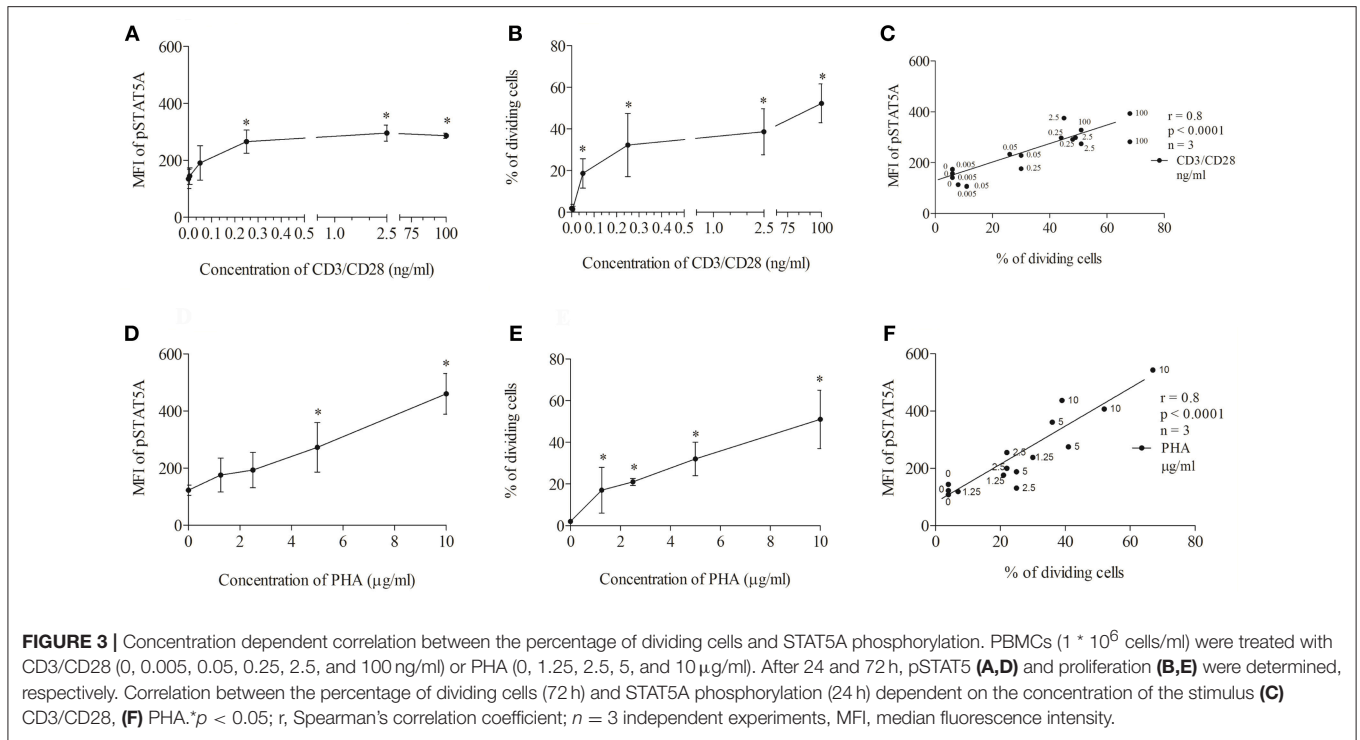


TABLE 1 | Summary of MFI of pSTAT5A, % of CD25⁺ pSTAT5A⁺ cells and % of dividing cells, before and after treatment with JAK3 and STAT5 inhibitors in CD3/CD28 stimulated cells (*n* = 6).

Control group	Unstimulated	CD3/CD28 (100 ng/ml)	CD3/CD28 (100 ng/ml) + DMSO (0.07 %)	CD3/CD28 (100 ng/ml) + JAK3i (12 μM)	CD3/CD28 (100 ng/ml) + STAT5i (35 μM)
MFI of pSTAT5A ^a	103 ± 8	449 ± 134	358 ± 131	112 ± 17	127 ± 27
% of CD25 ⁺ pSTAT5A ⁺ ^b	1.75 ± 0.7	46.6 ± 13.5	38.7 ± 8.7	8.3 ± 3.7	11.6 ± 7.2
% of dividing Cells ^c	2 ± 0.6	53.3 ± 7.3	53.8 ± 12	7 ± 5.7	5.5 ± 4.5

^aMedian fluorescence intensity (MFI) of STAT5A after 24 h, calculated as mean ± SD.

^bPercent of CD25⁺ pSTAT5A⁺ cells after 24 h, calculated as mean ± SD.

^cPercent of dividing cells after 72 h, calculated as mean ± SD.

TABLE 2 | Summary of MFI of pSTAT5A, % of CD25⁺ pSTAT5A⁺ cells and % of dividing cells, before and after treatment with JAK3 and STAT5 inhibitors in PHA stimulated cells (*n* = 6).

Control group	Unstimulated	PHA (10 μg/ml)	PHA (10 μg/ml) + DMSO (0.07 %)	PHA (10 μg/ml) + JAK3i (12 μM)	PHA (10 μg/ml) + STAT5i (35 μM)
MFI of pSTAT5A ^a	103 ± 8	380 ± 111	331 ± 51	119 ± 15	125 ± 15
% CD25 ⁺ pSTAT5A ⁺ ^b	1.75 ± 0.7	42.8 ± 11.4	36.5 ± 8.7	8.1 ± 3.6	8.9 ± 6.7
% of dividing cells ^c	2 ± 0.6	51 ± 7.6	48.2 ± 8.5	9.8 ± 9	4.5 ± 7

^aMedian fluorescence intensity (MFI) of STAT5A after 24 h, calculated as mean ± SD.

^bPercent of CD25⁺ pSTAT5A⁺ cells after 24 h, calculated as mean ± SD.

^cPercent of dividing cells after 72 h, calculated as mean ± SD.

phosphorylation of STAT5A (plateau phase) (Figure 3A) and that the percentage of dividing cells was highest at 100 ng/ml (Figure 3B). When stimulating the cells with PHA both pSTAT5A (Figure 3D) and the percentage of dividing cells (Figure 3E) steadily rose with increasing concentration of PHA up to 10 μg/ml. Thus in further experiments, we used CD3/CD28 at 100 ng/ml and PHA at 10 μg/ml.

As demonstrated in Figures 3C,F independent of the stimulus used a strong correlation [Spearman's correlation coefficient (*r*) = 0.8, *p* < 0.0001] could be observed between STAT5A phosphorylation and the percentage of dividing cells.

To determine the optimal time to analyze STAT5A phosphorylation, we performed a series of kinetics. We found that the CD3/CD28—induced phosphorylation of STAT5A reached a peak value after 24 h and that it declined thereafter (Supplementary Figure 3A). Peak values after the stimulation with PHA were reached between 12 and 24 h (Supplementary Figure 3B). Clearly, production of IL-2 was highest at 24 h (Supplementary Figure 3C). Thus, in further experiments, we analyzed pSTAT5A at 24 h.

Inhibition of the JAK3/STAT5 Signal Cascade Leads to an Inhibition of pSTAT5A Signaling and T Cell Proliferation

As seen in Figures 4A,B; Table 1, CD3/CD28 stimulated T cells showed a significant increase in both the MFI of pSTAT5A (from 103 ± 8 to 449 ± 134) and the percentage of CD25⁺ pSTAT5A⁺ cells (from 1.75 ± 0.7 to 46.6 ± 13.5 %) after 24 h.

Furthermore, after 72 h as determined by VPD450 dye staining 53.3 ± 7.3% of the T cells treated with CD3/CD28 proliferated (Figure 4C). Similar results were obtained upon activation with PHA (Figures 4D–F; Table 2)

When CD3/CD28 or PHA stimulated T cells were pre-incubated with STAT5i, the MFI of pSTAT5A was substantially abrogated or barely detectable [127 ± 27 (CD3/CD28), 125 ± 15 (PHA)] (Figures 4A,D; Tables 1, 2) and the percentage of CD25⁺ pSTAT5A⁺ cells was extremely low [11.6 ± 7.2% (CD3/CD28), 8.9 ± 6.7% (PHA)] (Figures 4B,E; Tables 1, 2). Importantly, inhibition of phosphorylation of STAT5A was associated with a suppression of dividing T cells [5.5 ± 4.5% (CD3/CD28), 4.5 ± 7 % (PHA)] (Figures 4C,F; Tables 1, 2) after 72 h.

Similar results were obtained upon inhibition with JAK3i (Figures 4A–F; Tables 1, 2)

The inhibitory effect of JAK3i or STAT5i on proliferation was not due to an increased cytotoxicity, the percentage of dead cells hardly changed after 72 h of treatment (Figures 5A,B). To test whether the CD25⁺ cell population contained any regulatory T cells, we stimulated the cells with PHA or CD3/CD28 and measured the expression of the transcription factor FOXP3. Almost all CD25⁺ cells were FOXP3⁻ cells, the percentage of CD25⁺ FOXP3⁺ cells was low not exceeding 5–8% (data not shown).

Inhibition of IL-2 Gene Transcription Leads to a Decrease of pSTAT5A Signaling and T Cell Proliferation

To examine the role of IL-2 in STAT5A phosphorylation, we used CsA an inhibitor of calcineurine, which blocks the NFAT activity (3). After antigen recognition by the TCR, NFAT binds to the promoter region of the IL-2 gene leading to its transcription.

As shown in Figure 6; Table 3 treatment with CsA led to a substantial decrease of MFI values of pSTAT5 (from 398 ± 123 to 249 ± 74) in CD3/CD28 and (from 435 ± 143 to 325 ± 144) in PHA stimulated cells (Figures 6A,D; Table 3). This decrease

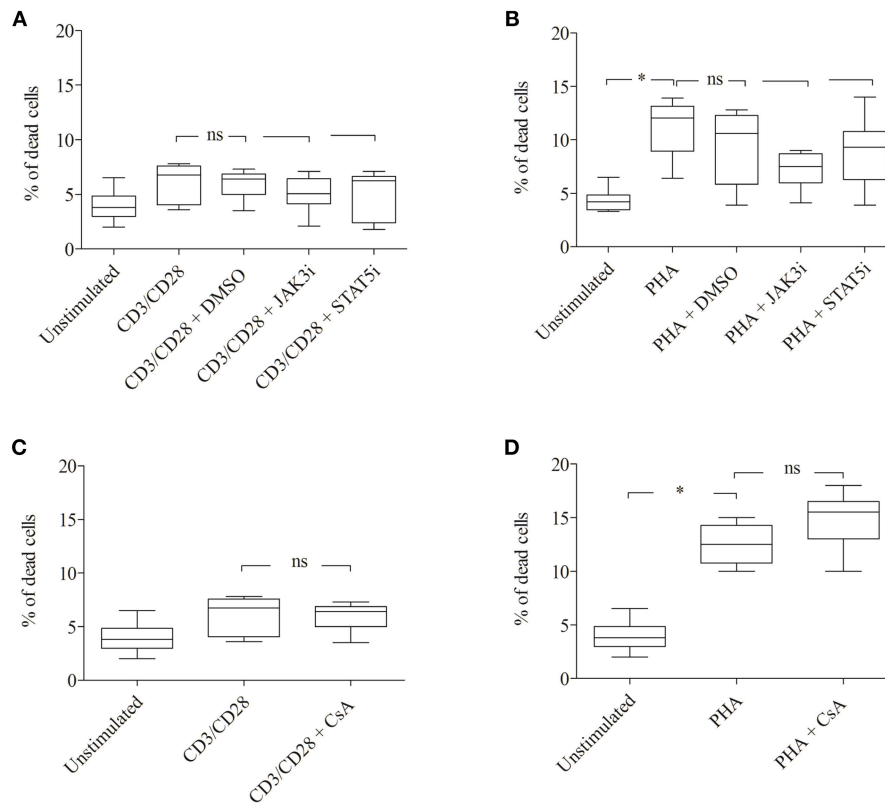


FIGURE 5 | Effect of JAK3, STAT5 inhibitors and cyclosporine (CsA) on cell viability. CD3/CD28 or PHA stimulated T cells were treated with DMSO (0.07 %), JAK3i (12 μ M), STAT5i (35 μ M) (A,B) or CsA (500 nM) (C,D) for 72 h. The percentage of dead cells was calculated after 7-AAD staining. The bold line inside each box plot shows the median, upper, and lower lines indicate the maximum and minimum values, respectively (Curves were evaluated by the non-parametric Friedman test). Ns, no significant; * $p < 0.05$ (Wilcoxon's test); $n = 6$ independent experiments; Jak3i, Janus kinase 3 inhibitor; STAT5i, signal transducer and activator of transcription 5 inhibitor.

was associated with a low percentage of CD25⁺ pSTAT5A⁺ cells stimulated with CD3/CD28 (from 41.5 ± 9.9 to $21.3 \pm 10.9\%$) or with PHA (from 36.6 ± 11.9 to $24 \pm 10\%$) (Figures 6B,E; Table 3). The number of proliferating T cells was reduced [from 50.9 ± 5.7 to $26.5 \pm 5.8\%$ (CD3/CD28), from 51.6 ± 11.1 to $31.8 \pm 12.6\%$ (PHA)] (Figures 6C,F; Table 3).

Importantly, the phosphorylation of STAT5A and the percentage of CD25⁺ pSTAT5A⁺ of CsA-treated T cells (Figures 6A–E), but not the proliferation (Figures 6C,F; Table 3) was rescued by adding exogenous IL-2 (100 ng/ml). We could exclude that the inhibitory effect of CsA on T cell proliferation was due to a loss of cell viability as assessed 72 h after treatment (Figures 5C,D).

Validation of STAT5A Phosphorylation in Healthy Donors to DIN EN ISO 15189 Requirements and for Use in Diagnostic Application

To establish a rapid flow cytometric assay to evaluate STAT5A phosphorylation and to provide reference values for healthy adult controls, we analyzed the MFI of pSTAT5A and proliferation of T cells simultaneously ($n = 19$). In both, CD3/CD28 or

PHA treated cells, the MFI of pSTAT5A was strongly increased [from 112 ± 17 to 512 ± 278 (CD3/CD28), 413 ± 123 (PHA)] (Figure 7A; Table 4). The percentage of CD25⁺ pSTAT5A⁺ cells was significantly up-regulated and the amount of CD25⁺ pSTAT5A⁺ cells (24 h) correlated with the amount of dividing cells (72 h) (Figures 7D,E).

Flow cytometric analysis revealed that the percentage of CD25⁺ pSTAT5A⁺ cells ($47.1 \pm 13.2\%$ [CD3/CD28], $42.6 \pm 9\%$ (PHA)] after 24 h nearly mirrored the percentage of dividing cells after 72 h [$52.3 \pm 10.3\%$ (CD3/CD28), $48.4 \pm 9.7\%$ (PHA)] (Figures 7B–E; Table 4).

Subsequently, to ensure that our analytical method is accurate, reproducible and precise, validation of our data included the definition of intra- and interassay precision values (28). A coefficient of variation up to 25 percent was considered tolerable and fulfilled the criteria of the International Standard EN ISO 15189.

DISCUSSION

Lymphocyte proliferation is commonly accepted as a reliable measurement of lymphocyte activation (1). The current assays

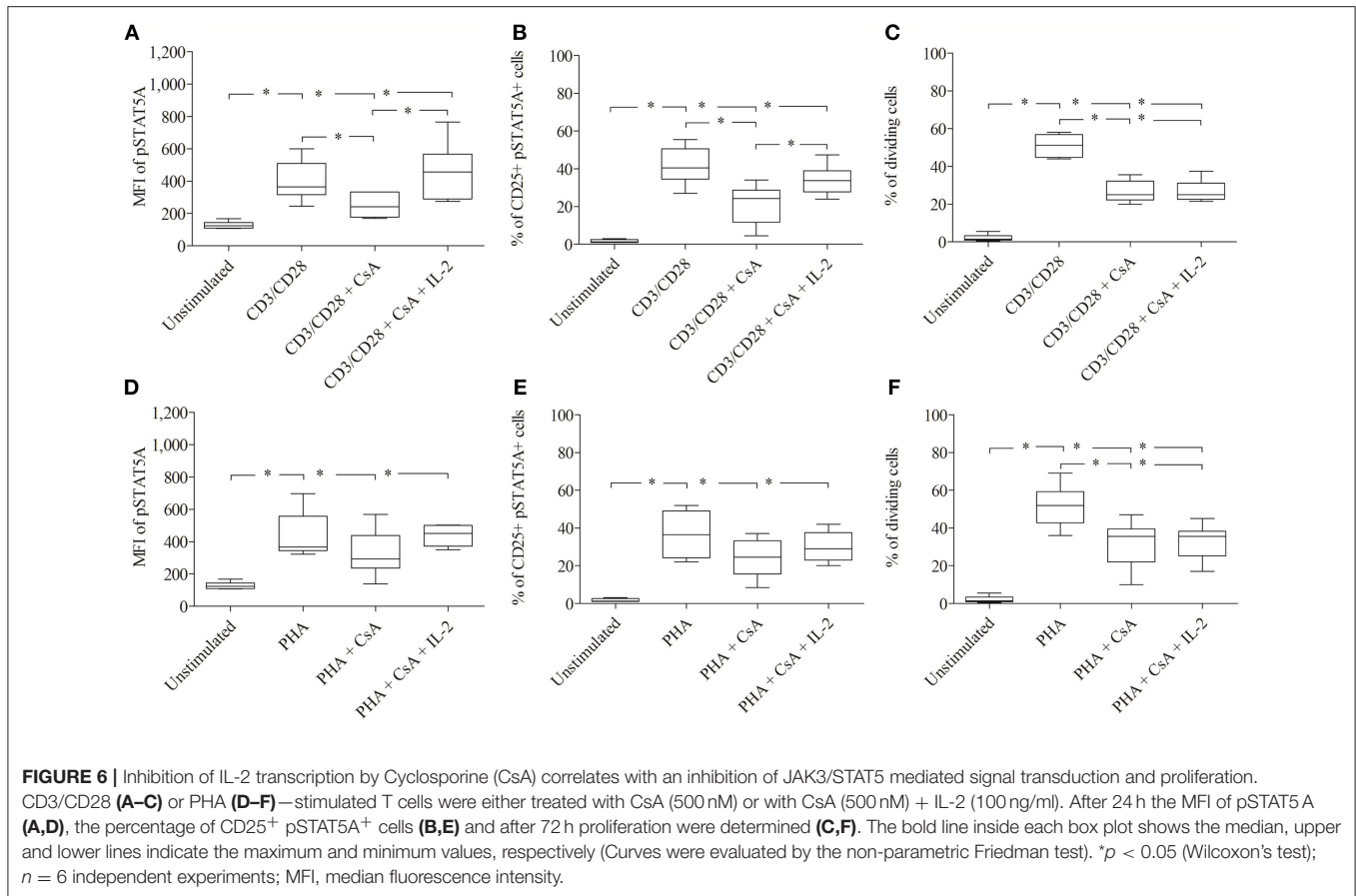


FIGURE 6 | Inhibition of IL-2 transcription by Cyclosporine (CsA) correlates with an inhibition of JAK3/STAT5 mediated signal transduction and proliferation. CD3/CD28 (A–C) or PHA (D–F)—stimulated T cells were either treated with CsA (500 nM) or with CsA (500 nM) + IL-2 (100 ng/ml). After 24 h the MFI of pSTAT5A (A,D), the percentage of CD25⁺ pSTAT5A⁺ cells (B,E) and after 72 h proliferation were determined (C,F). The bold line inside each box plot shows the median, upper and lower lines indicate the maximum and minimum values, respectively (Curves were evaluated by the non-parametric Friedman test). **p* < 0.05 (Wilcoxon’s test); *n* = 6 independent experiments; MFI, median fluorescence intensity.

TABLE 3 | Summary of MFI of pSTAT5A, % of CD25⁺ pSTAT5A⁺ cells and % of dividing cells before and after treatment with Cyclosporine (CsA) in CD3/CD28 and PHA stimulated cells (*n* = 6).

Control group	Unstimulated	CD3/CD28 (100 ng/ml)	CD3/CD28 (100 ng/ml) + CsA (500 nM)	CD3/CD28 (100 ng/ml) + CsA (500 nM) + IL-2 (100 ng/ml)	PHA (10 μg/ml)	PHA (10 μg/ml) + CsA (500 nM)	PHA (10 μg/ml) + CsA (500 nM) + IL-2 (100 ng/ml)
MFI of pSTAT5A ^a	128 ± 22	398 ± 123	249 ± 74	458 ± 176	435 ± 143	325 ± 144	438 ± 64
% CD25 ⁺ pSTAT5A ⁺ ^b	1.6 ± 0.8	41.5 ± 9.9	21.3 ± 10.9	33.9 ± 7.9	36.6 ± 11.9	24 ± 10	30 ± 8.3
% of dividing cells ^c	2 ± 1.8	50.9 ± 5.7	26.5 ± 5.8	26.8 ± 5.7	51.6 ± 11.1	31.8 ± 12.6	32.8 ± 9.4

^aMedian fluorescence intensity (MFI) of STAT5A after 24 h, calculated as mean ± SD.

^bPercent of CD25⁺ pSTAT5A⁺ cells after 24 h, calculated as mean ± SD.

^cPercent of dividing cells after 72 h, calculated as mean ± SD.

have many drawbacks including the need of bulk cultures and long incubation times (3–5 days), which is inconvenient when rapid diagnosis is desirable. Therefore, we tried to establish a rapid, reliable method that can be used as an indicator of proliferation. We asked whether the phosphorylation of STAT5A is a trustworthy marker for predicting T cell proliferation.

We analyzed the effect CD3/CD28 or PHA on signaling pathways that are essential for T cell proliferation. Our results revealed that a moderate expression of pSTAT5A starts after a few hours of stimulation (6 h) by CD3/CD28 and PHA. It leads to an increased expression of CD25, a prerequisite to form the

high affinity IL-2 receptor. Hence, IL-2 can achieve its biological effects such as inducing a sustained IL-2 dependent JAK3/STAT5 signal cascade, which leads to high phosphorylation of STAT5 (after 24 h) and cell proliferation (after 72 h). Our data displayed a strong correlation between these two events.

Interestingly, loss of phosphorylation of STAT5A by the specific inhibitors, that target the activity of STAT5 directly like STAT5i or indirectly like JAK3i led to down-regulation of the percentage of CD25⁺ pSTAT5A⁺ cells, accompanied by a diminished PHA or CD3/CD28—driven T cell proliferation.

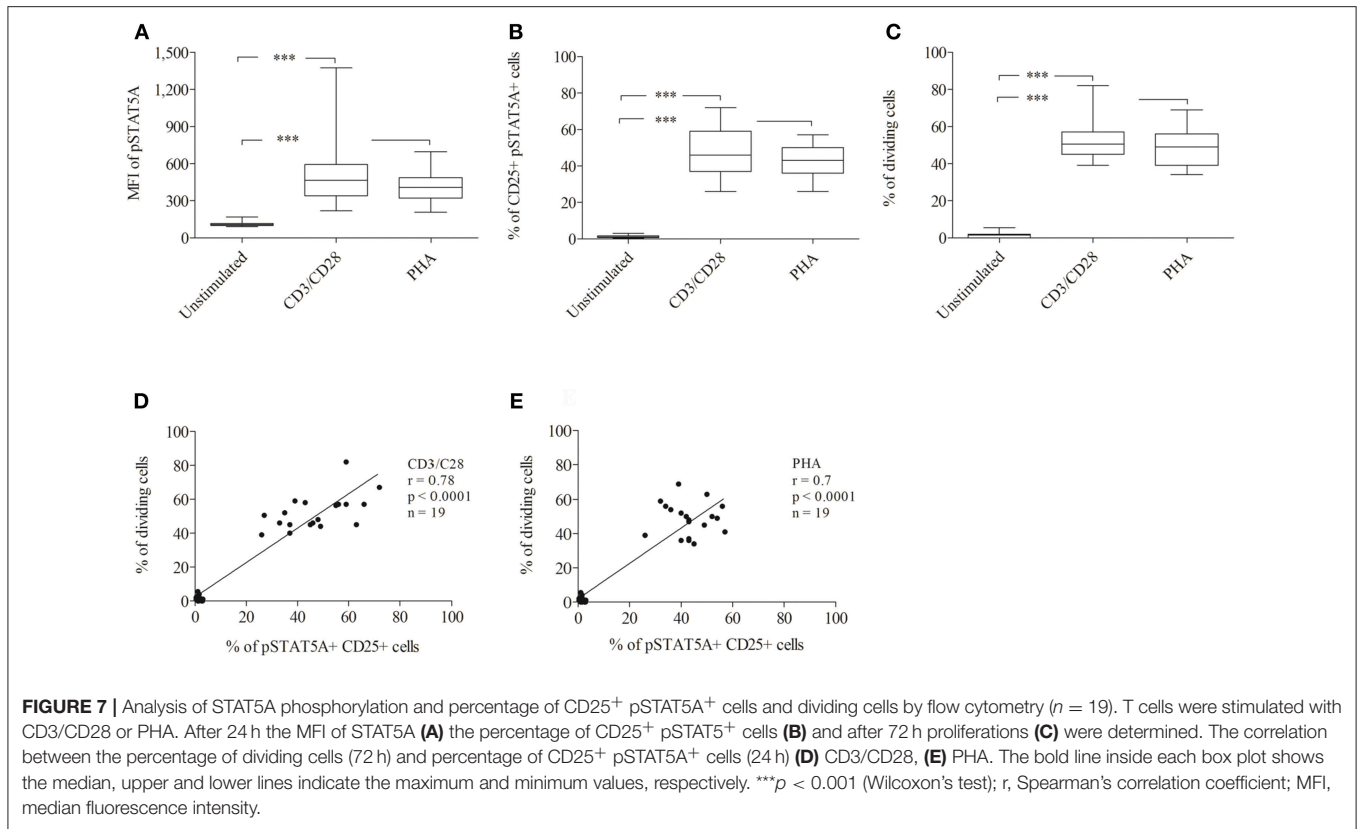


TABLE 4 | Summary of MFI of pSTAT5A, % of CD25⁺ pSTAT5A⁺ cells and % of dividing cells in CD3/CD28 or PHA stimulated cells for healthy adult controls (*n* = 19).

Control group	Unstimulated	CD3/CD28 (100 ng/ml)	PHA (10 μg/ml)
MFI of pSTAT5A ^a	112 ± 17	512 ± 278	413 ± 123
% of CD25 ⁺ pSTAT5A ⁺ ^b	1.3 ± 0.8	47.1 ± 13.2	42.6 ± 9
% of dividing cells ^c	1.5 ± 1.4	52.3 ± 10.3	48.4 ± 9.7

^aMedian fluorescence intensity (MFI) of STAT5A after 24 h, calculated as mean ± SD.

^bPercent of CD25⁺ pSTAT5A⁺ cells after 24 h, calculated as mean ± SD.

^cPercent of dividing cells after 72 h, calculated as mean ± SD.

In agreement with other studies (9, 12), these observations confirm that STAT5A activation, downstream of TCR signaling, plays an important role in inducing the transcription of the CD25 gene. This in turn leads to the formation of the high affinity IL-2R, which results in sustained prolonged JAK3/STAT5 activity and long-term CD25 up-regulation (9, 12).

We could not distinguish between STAT5A and STAT5B being involved in CD25 expression, because both proteins were affected by the inhibitors. Previously, Ivashkiv LB and Hu X 2004 (29) reported that T cells from STAT5A deficient mice displayed reduced proliferation rates secondary to a diminished expression of the IL-2Rα chain. Likewise, Kanai et al. (10) reported that STAT5B deficient patients have reduced numbers of natural killer cells, T cells and impaired IL-2 signaling. They showed that in humans the anti-apoptotic factor BCL2L1 is

regulated by STAT5A, whereas FOXP3, and CD25 expression are regulated by STAT5B. Moreover, Lin and Leonard (14) described the importance of the functional cooperation of STAT5 with other transcription factors in regulating CD25 expression (14).

In order to clarify the role of IL-2 in the activation of the JAK3/STAT5 signal cascade, expression of CD25 and cell proliferation, we used CsA which is known to inhibit the nuclear entry of the transcription factor NFAT that is required for IL-2 gene transcription (30). The treatment with CsA substantially decreased the phosphorylation of STAT5A, the percentage of CD25⁺ pSTAT5A⁺ cells and the percentage of dividing cells.

Importantly, the phosphorylation of STAT5A and the percentage of CD25⁺ pSTAT5A⁺ in CsA treated cells was rescued by adding exogenous IL-2, but the percentage of dividing cells was not (after 72 h incubation). It is very well possible that CsA by inhibiting the phosphatase calcineurine displays effects that are not restricted to NFAT and thus interferes with mechanisms that are IL-2 independent.

Taken together, our data underline the general perception on TCR mediated proliferation. Signaling basically involves two steps, the first leading to the transcription of the IL-2 gene, the second starting with the activation of JAK3/STAT5 signaling which results in generating the high affinity IL2R. Thereafter, the irreversible decision to replicate DNA and proliferate is made.

In the current study, we showed a strong correlation between the STAT5A phosphorylation and percentage of dividing

cells. According to our results including the data derived from the T cells of an immunodeficient patient, we suggest pSTAT5A as a new and rapid diagnostic flow cytometric marker. Additionally, we analyzed T cells from 19 healthy donors to identify a threshold for pSTAT5A values after stimulation with CD3/CD28 or PHA. However, each laboratory should determine and validate its own threshold value following appropriate validation procedures.

In conclusion, we introduced a rapid and straightforward flow cytometric—assay for the assessment of T cell proliferation, based on the staining of phosphorylated STAT5A. Our assay is unique because it identifies T cell proliferation by detecting immediate phosphorylation of STAT5A after stimulation. Because this method is rapid, robust and adaptable, it could be implemented for the measurement of T cells in patient's samples in a variety of clinical settings.

ETHICS STATEMENT

The study protocol conformed to the ethical guidelines of the Declaration of Helsinki and was approved by the ethics committee of the University Leipzig (092/2002 and 151/2006). All donors gave written informed consent.

REFERENCES

- Cretel E, Touchard D, Bongrand P, Pierres A. A new method for rapid detection of T lymphocyte decision to proliferate after encountering activating surfaces. *J Immunol Methods*. (2011) 364:33–9. doi: 10.1016/j.jim.2010.10.007
- Caruso A, Licenziati S, Corulli M, Canaris AD, Francesco MA de, Fiorentini S, et al. Flow cytometric analysis of activation markers on stimulated T cells and their correlation with cell proliferation. *Cytometry*. (1997) 27:71–6. doi: 10.1002/(SICI)1097-0320(19970101)27:1<71::AID-CYTO9>3.0.CO;2-O
- Frischbutter S, Schultheis K, Patzel M, Radbruch A, Baumgrass R. Evaluation of calcineurin/NFAT inhibitor selectivity in primary human Th cells using bar-coding and phospho-flow cytometry. *Cytometry A*. (2012) 81:1005–11. doi: 10.1002/cyto.a.22204
- Jutz S, Leitner J, Schmetterer K, Doel-Perez I, Majdic O, Grabmeier-Pfistershammer K, et al. Assessment of costimulation and coinhibition in a triple parameter T cell reporter line: simultaneous measurement of NF- κ B, NFAT and AP-1. *J Immunol Methods*. (2016) 430:10–20. doi: 10.1016/j.jim.2016.01.007
- Podtschaske M, Benary U, Zwinger S, Hofer T, Radbruch A, Baumgrass R. Digital NFATc2 activation per cell transforms graded T cell receptor activation into an all-or-none IL-2 expression. *PLoS ONE*. (2007) 2:e935. doi: 10.1371/journal.pone.0000935
- Macian F. NFAT proteins: key regulators of T-cell development and function. *Nat Rev Immunol*. (2005) 5:472–84. doi: 10.1038/nri1632
- Barten MJ, Gummert JF, van Gelder T, Shorthouse R, Morris RE. Flow cytometric quantitation of calcium-dependent and -independent mitogen-stimulation of T cell functions in whole blood: inhibition by immunosuppressive drugs *in vitro*. *J Immunol Methods*. (2001) 253:95–112. doi: 10.1016/S0022-1759(01)00369-6
- Ellery JM, Nicholls PJ. Possible mechanism for the alpha subunit of the interleukin-2 receptor (CD25) to influence interleukin-2 receptor signal transduction. *Immunol Cell Biol*. (2002) 80:351–7. doi: 10.1046/j.1440-1711.2002.01097.x
- Paukku K, Silvennoinen O. STATs as critical mediators of signal transduction and transcription: lessons learned from STAT5. *Cytokine Growth Factor Rev*. (2004) 15:435–55. doi: 10.1016/j.cytogfr.2004.09.001

AUTHOR CONTRIBUTIONS

MB: generation and analysis of data, writing of the manuscript. AB: analysis and interpretation of data. M-TF: analysis of IL-2 production. BG: supervision of the patient. UK: validation of data. US: study supervision, design of the experiments.

ACKNOWLEDGMENTS

We thank Heike Knaack, Katrin Bauer, and Bettina Glatte for excellent technical assistance and Anja Grahnert, Ronald Weiß, Erik Schilling, Danni Issa for support and advice. We thank Sauna Hauschildt for discussing the data and for critically reading the manuscript. MB is very grateful for grant support from Cusanuswerk, Germany. The authors acknowledge support from the German Research Foundation (DFG) and Leipzig University within the program of Open Access Publishing.

SUPPLEMENTARY MATERIAL

The Supplementary Material for this article can be found online at: <https://www.frontiersin.org/articles/10.3389/fimmu.2019.00722/full#supplementary-material>

- Kanai T, Seki S, Jenks JA, Kohli A, Kawli T, Martin DP, et al. Identification of STAT5A and STAT5B target genes in human T cells. *PLoS ONE*. (2014) 9:e86790. doi: 10.1371/journal.pone.0086790
- Rani A, Murphy JJ. STAT5 in cancer and immunity. *J Interferon Cytokine Res*. (2016) 36:226–37. doi: 10.1089/jir.2015.0054
- Shatrova AN, Mityushova EV, Vassilieva IO, Aksenov ND, Zenin VV, Nikolsky NN, et al. Time-dependent regulation of IL-2R alpha-Chain (CD25) expression by TCR signal strength and IL-2-induced STAT5 signaling in activated human blood T lymphocytes. *PLoS ONE*. (2016) 11:e0167215. doi: 10.1371/journal.pone.0167215
- Serfling E, Berberich-Siebelt F, Chuvpilo S, Jankevics E, Klein-Hessling S, Twardzik T, et al. The role of NF-AT transcription factors in T cell activation and differentiation. *Biochim Biophys Acta*. (2000) 1498:1–18. doi: 10.1016/S0167-4889(00)00082-3
- Lin JX, Leonard WJ. The role of Stat5a and Stat5b in signaling by IL-2 family cytokines. *Oncogene*. (2000) 19:2566–76. doi: 10.1038/sj.onc.1203523
- Wang X, Rickert M, Garcia KC. Structure of the quaternary complex of interleukin-2 with its alpha, beta, and gamma receptors. *Science*. (2005) 310:1159–63. doi: 10.1126/science.1117893
- Lockyer HM, Tran E, Nelson BH. STAT5 is essential for Akt/p70S6 kinase activity during IL-2-induced lymphocyte proliferation. *J Immunol*. (2007) 179:5301–8. doi: 10.4049/jimmunol.179.8.5301
- Smith KA, Griffin JD. Following the cytokine signaling pathway to leukemogenesis: a chronology. *J Clin Invest*. (2008) 118:3564–73. doi: 10.1172/JCI35819
- Lyons AB. Analysing cell division *in vivo* and *in vitro* using flow cytometric measurement of CFSE dye dilution. *J Immunol Methods*. (2000) 243:147–54. doi: 10.1016/S0022-1759(00)00231-3
- O'Shea JJ, Holland SM, Staudt LM. JAKs and STATs in immunity, immunodeficiency, and cancer. *N Engl J Med*. (2013) 368:161–70. doi: 10.1056/NEJMra1202117
- Atkinson TP. Immune deficiency and autoimmunity. *Curr Opin Rheumatol*. (2012) 24:515–21. doi: 10.1097/BOR.0b013e32835680c6
- Pertovaara M, Silvennoinen O, Isomaki P. STAT-5 is activated constitutively in T cells, B cells and monocytes from patients with primary Sjogren's syndrome. *Clin Exp Immunol*. (2015) 181:29–38. doi: 10.1111/cei.12614

22. Owen DL, Farrar MA. STAT5 and CD4 (+) T Cell Immunity. *F1000Res.* (2017) 6:32. doi: 10.12688/f1000research.9838.1
23. Tsai W-J, Yang S-C, Huang Y-L, Chen C-C, Chuang K-A, Kuo Y-C. 4-Hydroxy-17-methylcisterol from agaricus blazei decreased cytokine production and cell proliferation in human peripheral blood mononuclear cells via inhibition of NF-AT and NF-kappaB activation. *Evid Based Complement Alternat Med.* (2013) 2013:435916. doi: 10.1155/2013/435916
24. Kuo YC, Yang NS, Chou CJ, Lin LC, Tsai WJ. Regulation of cell proliferation, gene expression, production of cytokines, and cell cycle progression in primary human T lymphocytes by piperlactam S isolated from Piper kadsura. *Mol Pharmacol.* (2000) 58:1057–66. doi: 10.1124/mol.58.5.1057
25. Roederer M. Interpretation of cellular proliferation data: avoid the panglossian. *Cytometry A.* (2011) 79:95–101. doi: 10.1002/cyto.a.21010
26. Bitar M, Boldt A, Binder S, Borte M, Kentouche K, Borte S, et al. Flow cytometric measurement of STAT1 and STAT3 phosphorylation in CD4(+) and CD8(+) T cells-clinical applications in primary immunodeficiency diagnostics. *J Allergy Clin Immunol.* (2017) 140:1439–41.e9. doi: 10.1016/j.jaci.2017.05.017
27. Boldt A, Borte S, Fricke S, Kentouche K, Emmrich F, Borte M, et al. Eight-color immunophenotyping of T-, B-, and NK-cell subpopulations for characterization of chronic immunodeficiencies. *Cytometry B Clin Cytom.* (2014) 86:191–206. doi: 10.1002/cytob.21162
28. Sack U, Barnett D, Demirel GY, Fossat C, Fricke S, Kafassi N, et al. Accreditation of flow cytometry in Europe. *Cytometry B Clin Cytom.* (2013) 84:135–42. doi: 10.1002/cyto.b.21079
29. Ivashkiv LB, Hu X. Signaling by STATs. *Arthritis Res Ther.* (2004) 6:159–68. doi: 10.1186/ar1197
30. Brandt C, Liman P, Bendfeldt H, Mueller K, Reinke P, Radbruch A, et al. Whole blood flow cytometric measurement of NFATc1 and IL-2 expression to analyze cyclosporine A-mediated effects in T cells. *Cytometry A.* (2010) 77:607–13. doi: 10.1002/cyto.a.20928

Conflict of Interest Statement: The authors declare that the research was conducted in the absence of any commercial or financial relationships that could be construed as a potential conflict of interest.

Copyright © 2019 Bitar, Boldt, Freitag, Gruhn, Köhl and Sack. This is an open-access article distributed under the terms of the Creative Commons Attribution License (CC BY). The use, distribution or reproduction in other forums is permitted, provided the original author(s) and the copyright owner(s) are credited and that the original publication in this journal is cited, in accordance with accepted academic practice. No use, distribution or reproduction is permitted which does not comply with these terms.