



# Baseline Circulating Activated TFH and Tissue-Like Exhausted B Cells Negatively Correlate With Meningococcal C Conjugate Vaccine Induced Antibodies in HIV-Infected Individuals

## OPEN ACCESS

### Edited by:

Lee Mark Wetzler,  
Boston University, United States

### Reviewed by:

Randy A. Albrecht,  
Icahn School of Medicine at Mount  
Sinai, United States  
Sanjay Ram,  
University of Massachusetts Medical  
School, United States

### \*Correspondence:

Constantinos Petrovas  
petrovasc@mail.nih.gov

†These authors have contributed  
equally to this work

### Specialty section:

This article was submitted to  
Vaccines and Molecular Therapeutics,  
a section of the journal  
Frontiers in Immunology

Received: 03 July 2018

Accepted: 10 October 2018

Published: 29 October 2018

### Citation:

Milagres L, Silva G, Pereira-Manfro W,  
Frota AC, Hofer C, Ferreira B,  
Barreto D, Figueredo M, Coelho B,  
Villela L, Petrovas C and Koup R  
(2018) Baseline Circulating Activated  
TFH and Tissue-Like Exhausted B  
Cells Negatively Correlate With  
Meningococcal C Conjugate Vaccine  
Induced Antibodies in HIV-Infected  
Individuals. *Front. Immunol.* 9:2500.  
doi: 10.3389/fimmu.2018.02500

Lucimar Milagres<sup>1,2</sup>, Giselle Silva<sup>1</sup>, Wânia Pereira-Manfro<sup>1</sup>, Ana Cristina Frota<sup>3</sup>,  
Cristina Hofer<sup>3,4</sup>, Bianca Ferreira<sup>3</sup>, Daniela Barreto<sup>3</sup>, Marcelo Figueredo<sup>5</sup>,  
Barbara Coelho<sup>5</sup>, Lucia Villela<sup>6</sup>, Constantinos Petrovas<sup>2\*†</sup> and Richard Koup<sup>2†</sup>

<sup>1</sup> Department of Microbiology Immunology and Parasitology, State University of Rio de Janeiro, Rio de Janeiro, Brazil,

<sup>2</sup> Immunology Laboratory, Vaccine Research Center, NIAID, NIH, Bethesda, MD, United States, <sup>3</sup> Department of Pediatrics, Instituto de Puericultura e Pediatria Martagão Gesteira, Rio de Janeiro, Brazil, <sup>4</sup> Preventive Medicine Department, School of Medicine, Federal University of Rio de Janeiro, Rio de Janeiro, Brazil, <sup>5</sup> Department of Periodontics, State University of Rio de Janeiro, Rio de Janeiro, Brazil, <sup>6</sup> Laboratory of Immunology, Pedro Ernesto University Hospital, State University of Rio de Janeiro, Rio de Janeiro, Brazil

Since 2006, meningococcal serogroup C (MenC) conjugate (MCC) vaccines have been supplied by the Brazilian government for HIV-infected children under 13 years old. For measuring protection against MenC, the serum bactericidal antibody (SBA) assay is the method of choice. The characterization of T follicular helper cells (TFH) cells has been an area of intensive study because of their significance in multiple human diseases and in vaccinology. The objective of this study was to characterize the phenotype of peripheral TFH cells and B cells and how they associated with each other and with SBA levels induced by vaccination as well as with serum cytokine levels of HIV-infected and non-infected children and adolescents. We found that CD27<sup>-</sup>IgD<sup>-</sup>CD21<sup>-</sup>CD38<sup>+</sup> (exhausted B cells) as well as short-lived plasmablasts (CD27<sup>+</sup>IgD<sup>-</sup>CD21<sup>-</sup>CD38<sup>+</sup>) are increased in cART treated HIV patients and negatively associated with MCC vaccine induced SBA levels. Baseline frequency of activated peripheral TFH cells was a negative correlate for SBA response to MCC vaccine but positively correlated with circulating plasmablast frequency. Baseline IL4-levels positively associated with SBA response but showed a negative correlation with activated peripheral TFH cells frequency. The increased frequency of activated peripheral TFH cells found in non-responders to the vaccine implies that higher activation/differentiation of CD4 T cells within the lymph node is not necessarily associated with induction of vaccine responses.

**Keywords:** meningococcal vaccines, HIV infection, bactericidal antibodies, T follicular helper cells, exhausted B cells

## INTRODUCTION

Meningococcal disease is a public health problem worldwide (1). In Brazil, case fatality rates of this disease are as high as 18–20% of cases and serogroup C meningococcus (MenC) accounts for more than 80% of reported cases (2). Since 2006, meningococcal serogroup C conjugate (MCC) vaccines have been supplied by the public sector for control of outbreaks and for high-risk patients, including HIV-infected children under 13 years old (3). Currently, the immunization schedule consists of 3 injections of a MCC vaccine in the first year of life and a booster dose in adolescents aged 12–13 years (4).

We have previously shown that only 30% of Brazilian HIV-infected children and adolescents seroconverted (bactericidal antibody titers) after one dose of MCC vaccine (5). A second dose of the vaccine induced seroconversion in about 70% of HIV-infected individuals (6). Still 30% remained without protective antibody response after two doses of vaccine. Poor antibody response of vaccinees was associated with CD4 T cell activation identified through expression of CD38, HLA-DR and CCR5 (7).

Recent studies have been focused on the characterization of circulating CD4 T cells that represent counterparts of lymph node follicular helper CD4 T cells (TFH) (8, 9). Peripheral TFH cells are characterized by high expression of the CXCR5 chemokine receptor 5 (CXCR5) while the co-expression of other surface receptors like CCR6 and CXCR3 further defines peripheral TFH subsets with different capacity for at least *in vitro* B cell help (8, 9). In studies on seasonal influenza vaccines, the frequency of ICOS<sup>+</sup>CXCR3<sup>+</sup>CXCR5<sup>+</sup> peripheral TFH cells was shown to increase only transiently after vaccination (peak at day 7) (10). This kinetics seems synchronized with the emergence of influenza-specific plasmablasts and plasma cells in blood. In contrast, a study in aging HIV-infected and uninfected women, activated (expression of HLA-DR and CD38) CD4 and peripheral TFH cells was indicative of diminished influenza vaccine-induced antibody response, mediated through TNF $\alpha$  production and consequently impairment of peripheral TFH-induced IL-21 secretion (11, 12). Over the past decade it has become increasingly evident that many chronic human infectious diseases to which immunity is not readily established, including AIDS, malaria, HCV and TB, are associated with fundamental alterations in the composition and functionality of B cells. A common feature of these diseases appears to be a large expansion of exhausted B cells, which are qualitatively inferior in attaining immunological control of viremia and antibody production (13, 14).

A comprehensive understanding of the biology and dynamics of peripheral TFH cells and circulating B cells may be important for the establishment of cellular determinants of vaccine-induced antibody response, which may have relevance for vaccine design or a more rational use of routine vaccines in immunocompromised individuals. Here, we characterized the phenotype of circulating B cells and peripheral TFH cells and how they associated with each other and with the protective antibody response induced by vaccination (MCC) of HIV-infected and non-infected children and adolescents. Also shown are the

**TABLE 1** | Baseline characteristics of HIV<sup>+</sup> patients classified as responders ( $\geq 4$ -fold increase in bactericidal antibody titers) or non-responders to MenC vaccination.

Characteristic	Responders* (n = 10)	Non-responders (n = 7)
<b>AGE, YEARS</b>		
Median (Range)	13.9 (6.4–18.4)	12.3 (8.9–16.8)
<b>GENDER</b>		
Male (%)	5 (50)	5 (71.4)
Female (%)	5 (50)	2 (28.6)
Plasma HIV RNA, copies/ml**	229.5 (<50–2768)	236 (<50–587)
Nadir CD4 count, cells/ $\mu$ l, blood**	325.5 (128–807)	374 (193–1441)
CD4 count, cells/ $\mu$ l, blood**	737 (463–953)	689 (582–1730)
CD4 percentage**	25.5 (15–33)	32 (20–37)
CD8 percentage**	46 (43–60)	43 (34–53)
Length of cART (years)**	6.8 (4.5–11.2)	6.2 (5.5–10.7)
Age of initiation of cART (years)**	4.7 (0.9–8.7)	3.3 (1.6–9.3)
% of CDC Clinical Category C	3 (30%)	4 (57%)
Mean (log <sub>2</sub> ) of SBA titer to MenC after 2 doses of MCC vaccine	7.0	0.4

\*Only one individual was not in cART.

\*\*Median (IQR).

associations of baseline blood cytokine concentrations with the frequency of peripheral TFH cells and antibody response.

## MATERIALS AND METHODS

### Cohorts

We conducted a prospective cohort study at the *Instituto de Puericultura e Pediatria Martagão Gesteira, Universidade Federal do Rio de Janeiro (IPPMG/UFRJ)*, Rio de Janeiro, Brazil, to investigate the seroconversion rate after MCC vaccination in HIV-vertically infected 2–18 year-old children. Details of the study were previously described (5). Baseline characteristics of HIV<sup>+</sup> patients are described in **Table 1**.

### Vaccination and Specimen Collection

Following informed consent, the cohort received one intramuscular injections of MCC vaccine (Novartis; C Polysaccharide/CRM<sub>197</sub>) at the recommended dose (10  $\mu$ g/0.5 ml). One year later, HIV-vertically infected children received a booster dose at the recommended dose described above. HIV uninfected (HIV<sup>-</sup>) controls did not receive the booster dose, as per recommendation at the time of this study, in healthy children and youth, aged 1–25 years, a single MenC dose should be given (15). For HIV<sup>+</sup> group, blood samples were collected before vaccination (visit 1), 1–2 months after one dose (visit 2), before booster (10–12 months after first dose, visit 3) and 1–2 months after boosting (visit 4). HIV<sup>-</sup> group had blood samples collected at visit 1 and visit 2. Heparin-treated tubes or in the absence of anti-coagulant were used and processed within 3 h after the blood draw. Peripheral blood mononuclear cells (PBMC) were separated by density-gradient centrifugation over Histopaque<sup>®</sup> (Sigma, St Louis, USA) and stored in RPMI/20%

fetal bovine serum/10% DMSO in liquid nitrogen until the day of the assays. Serum samples were stored at  $-20^{\circ}\text{C}$ .

For this study, we selected 17 HIV<sup>+</sup> children (median age of 12.9 years) and 12 HIV<sup>-</sup> children (median age of 9.2 years). Patients were classified as responders (Rs) to the vaccine if they showed at least 4-fold increase in serum bactericidal antibody levels after vaccination. For HIV<sup>+</sup> group and HIV<sup>-</sup> group 10 (62%) and 6 (38%) individuals were classified as Rs, respectively.

## Bactericidal Assay

Serum bactericidal antibody (SBA) titers were measured as previously described (5, 7), using human complement source.

## Polychromatic Flow Cytometry Antibodies

Flow cytometry was performed using the following directly conjugated antibodies (clones): (1) BD Biosciences: CD3 H7APC (SK7 clone), CD45RA PE-Cy7 (L48), (2) BioLegend: CD3 BV650 (OKT3), IgM BV570 (MHM-88), PD-1 BV711 (EH12.2H7), CCR6 BV785 (G034E3), CD27 Alexa Fluor 594 (IA4CD27), CD27 BV605 (O323), CCR7 BV605 (G043H7), CCR7 APC (G043H7), CD8 BV650 (RPA-T8), ICOS Pac Blue (C398.4A), CD38 BV785 (HIT2); CXCR5 Alexa Fluor 488 (J252D4), CXCR3 PE (G025H7) (3) Invitrogen: CD4 PE-Cy5.5 (S3.5) and Aqua LIVE/DEAD<sup>®</sup> amine viability dye; (4) eBioscience: CXCR5 PE-CY7 (MU5UBEE); (5) Southern Biotech: IgD-PE; (6) Beckman Coulter: CD19 ECD (J3-119). The IgG (Alexa Fluor 680) and CD21 (PE-CY5.5) were conjugated in-house.

## Phenotypic Analysis

PBMCs were resuspended in RPMI 1640 (Invitrogen) supplemented with 10% fetal bovine serum, 2 mM L-glutamine, 100 U/mL penicillin and 100 ug/mL streptomycin (Invitrogen).  $1 - 2 \times 10^6$  PBMCs were incubated with Aqua viability dye and surface stained with titrated amounts of antibodies to panel (1): CD3, CD4, CD8, CD27, CD45RA, CCR7, PD-1, CCR6, CXCR3, CXCR5, and ICOS or (2) CD3, CD19, CD21, CD27, CD38, IgD, IgG, IgM, CXCR5, and CCR7. Cells were then washed in RPMI and fixed with 1% paraformaldehyde. Events were collected on a modified LSRII flow cytometer (BD Immunocytometry Systems). Electronic compensation was performed with antibody capture beads (BD Biosciences) stained separately with antibodies used in the test samples. Data were analyzed using FlowJo Version 9.6 (TreeStar, Ashland, OR).

## Measurement of Serum Cytokines

Serum samples collected before vaccination (V1) were used to measure soluble CD14 (sCD14), using standard ELISA assays according to manufacturer's instructions (Quantikine<sup>®</sup> ELISA, R & D Systems, Minneapolis, MN, USA) and for the following cytokines: IL-4, IL-10, IL-21, TNF- $\alpha$ , and IFN- $\gamma$  using the LuminexMap platform multiplex assay (EMD Millipore, Billerica, MA, USA). For CXCL13 chemokine we used the ProcartaPlex Human BLC) Simplex kit (eBioscience, Waltham, MA USA). The Luminex Platform was from Department of Periodontics, UERJ, Rio de Janeiro, Brazil.

## Serum IgG, IgM, and IgA Measurements

Total immunoglobulin concentrations of serum samples collected before vaccination (V1) were done by turbidimetry (Architect c4000, Abbott, Illinois, U.S.A.) according to manufacturer's instructions (BioSystems, Barcelona, Spain) at Immunology Laboratory, Pedro Ernesto University Hospital-UERJ, Rio de Janeiro, Brazil.

## Statistical Analysis

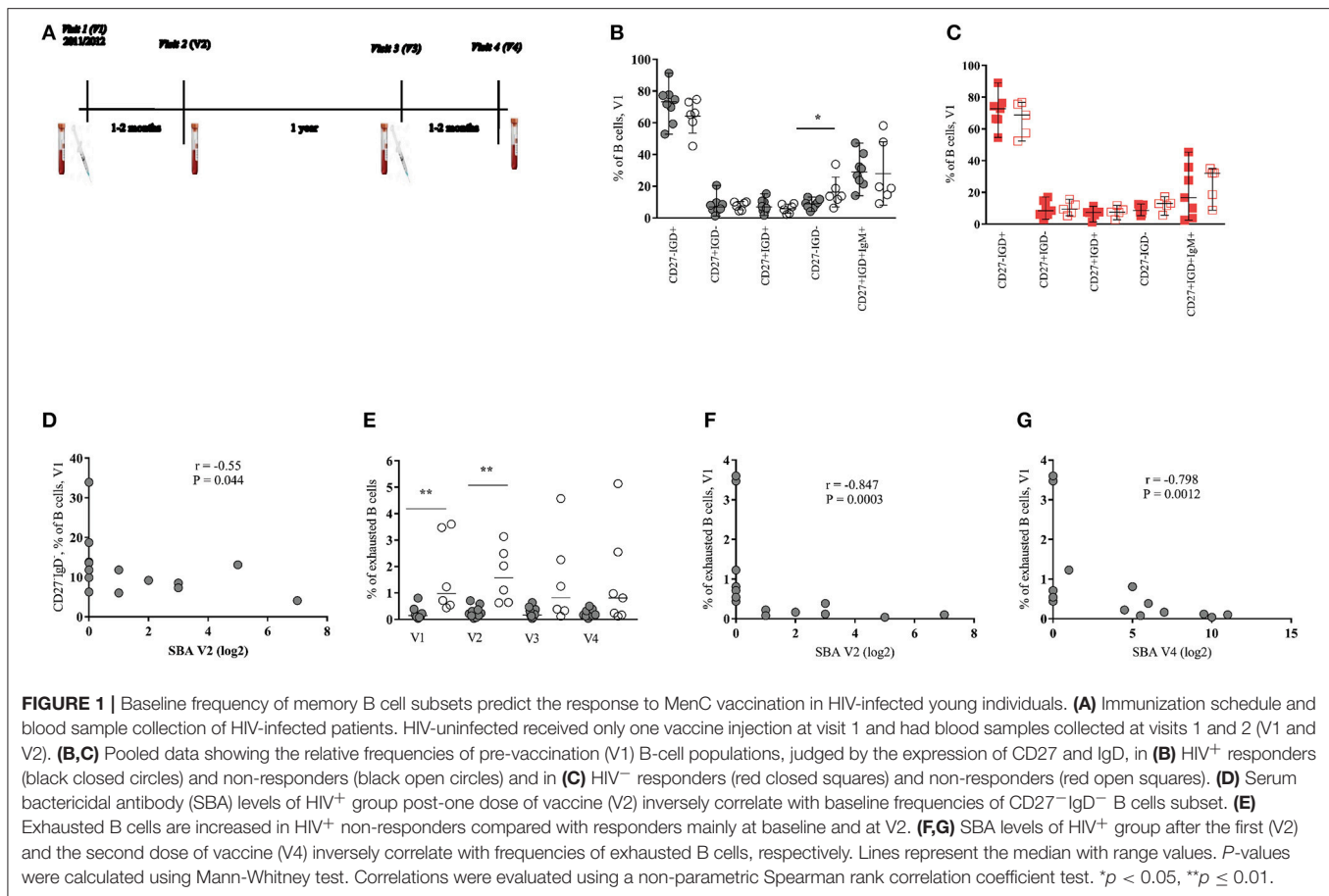
Flow cytometry data were analyzed using FlowJo software, version 7.6.4 (Tree StarInc., Ashland, OR). The levels of significance of the differences between groups were examined by, either the Mann-Whitney test (unpaired samples) or the Wilcoxon matched-pair test (paired samples), as nonparametric data were obtained. The correlation between different measurements of immune response was analyzed using Spearman rank test, after graph analyses. These analyses were performed with the GraphPad-Prism software, version 7 (GraphPad Software, Inc., USA).

## RESULTS

### Circulating CD27<sup>-</sup>IgD<sup>-</sup>CD21<sup>-</sup>CD38<sup>+</sup> (Tissue-Like Exhausted B Cells) Are Increased in HIV<sup>+</sup> Non-responders and Negatively Correlates With SBA

We have previously reported a significant negative correlation between the vaccine-induced bactericidal antibody responses and the frequency of circulating activated CD4T cells in a Brazilian HIV-infected cohort aged 2–18 years (7). Here, we sought to extend these studies by analyzing bulk circulating CD4 and B cell population and its association with vaccine antibody response. The immunization schedule and time of blood collection according to patient visits at the pediatric clinic are shown in **Figure 1A**. Demographic, immunological and virological parameters for HIV-infected participants are shown in **Table 1**. No significant differences between HIV<sup>+</sup> non-responders (NRs) and responders (Rs) were found when these parameters were analyzed, including time and length of cART (combination antiretroviral therapy) (**Table 1**). The median age of HIV<sup>-</sup> Rs and NRs was 9.2 and 10.4 years, respectively. For HIV<sup>-</sup> cohort, 55.5 and 71% of Rs and NRs, respectively, were female.

Circulating CD3<sup>-</sup>CD19<sup>+</sup> B cell subsets, identified by the expression of surface markers, were analyzed as shown in Supplementary Data (**Figure S1**). First, the relative frequency of subsets defined based on the expression of CD27 and IgD molecules were determined. For HIV<sup>+</sup> group, a significant difference ( $p = 0.032$ ) was found only for the baseline frequency of CD27<sup>-</sup>IgD<sup>-</sup> B cell subset between R and NR groups (**Figure 1B** and **Figures S2A–C**). No differences, however, were observed when the frequencies of B cell subsets were analyzed in the HIV<sup>-</sup> group (**Figure 1C** and **Figure S2D**). Interestingly, a significant negative correlation ( $r = -0.55$ ,  $p = 0.044$ ) between the baseline (V1) frequency of CD27<sup>-</sup>IgD<sup>-</sup> B cells and SBA measured after one dose of vaccine (V2) was found (**Figure 1D**).



A similar picture was seen when we considered SBA after two doses (V4) of vaccine ( $r = -0.53$ ,  $p = 0.054$ , data not shown). Contrary to HIV-infected group, no correlation between baseline CD27<sup>-</sup>IgD<sup>-</sup> B cells and SBA was found for the HIV<sup>-</sup> group (data not shown).

Decreased expression of CD21 and increased expression of CD38 is associated with activation and terminal B cell differentiation in HIV infection (16, 17). Therefore, we sought to analyze the expression of CD21 and CD38 on CD27<sup>-</sup>IgD<sup>-</sup> and CD27<sup>+</sup>IgD<sup>-</sup> (switched memory) B cell populations. A higher baseline ( $p = 0.005$ ) and V2 ( $p = 0.001$ ) frequency of CD27<sup>-</sup>IgD<sup>-</sup>CD21<sup>-</sup>CD38<sup>+</sup> B cells (hereafter described as exhausted B cells), in HIV<sup>+</sup> NRs compared to Rs was found (**Figure 1E**). Significant inverse correlations between baseline exhausted B cells and SBA after one (V2) and two (V4) doses of vaccine were also found in the HIV-infected group (**Figures 1F,G**). For HIV-uninfected cohort, we observed a trend for higher baseline frequencies of exhausted B cells at V1 and V2 (**Figure S2E**). Regarding the switched B cells (CD27<sup>+</sup>IgD<sup>-</sup>), HIV<sup>+</sup> NRs showed higher frequency of CD38<sup>+</sup>CD21<sup>+</sup> cells than HIV<sup>+</sup> Rs at all time points studied but V3 (**Figures S3A–D**). A trend for high levels of CD27<sup>+</sup>IgD<sup>-</sup>CD21<sup>-</sup>CD38<sup>+</sup> B cells (short-lived plasmablasts, hereafter described as plasmablasts) was also seen in NRs, especially at V2 (**Figure S3B**). A significant negative correlation was found between the baseline

frequency of CD27<sup>+</sup>IgD<sup>-</sup>CD21<sup>+</sup>CD38<sup>+</sup> B cells and SBA at V2 and V4 (**Figures S3E,F**) as well as between the frequency of that B cell phenotype at V3 and SBA at V4 (**Figure S3G**). A trend ( $p = 0.073$ ) for higher frequency of plasmablasts in NRs compared to Rs was found in HIV<sup>-</sup> individuals (**Figure S3H**).

For both HIV<sup>+</sup> and HIV<sup>-</sup> cohorts, we did not detect significant differences in the frequency of IgG<sup>+</sup> or IgM<sup>+</sup> switched B cells (data not shown) at any time point studied. Furthermore, no differences were found when the expression of CXCR5 and CCR7 on CD27<sup>-</sup>IgD<sup>-</sup> and CD27<sup>+</sup>IgD<sup>-</sup> B cells, between Rs and NRs, from both cohorts were analyzed (data not shown). Our data indicate that exhausted B cells and CD27<sup>+</sup>IgD<sup>-</sup>CD21<sup>+</sup>CD38<sup>+</sup> B cells as well as plasmablasts are increased during treated HIV infection and negatively associated with the MCC vaccine induced antibody response.

## Baseline Frequency of Activated Peripheral TFH Cells Inversely Correlates With Vaccine Induced Antibodies

Recently, several studies have been focused on the analysis of circulating CD4 subsets with increased capacity for *in vitro* B cell help as surrogates of the development of TFH

cells in the secondary lymphoid organs (8, 18, 19). We investigated the dynamics of peripheral TFH subsets based on the expression of CXCR5, CCR6 and CXCR3 (9, 10), the gating scheme is shown in **Figure S4**. A significantly higher frequency of CXCR3<sup>-</sup>CCR6<sup>-</sup> (median values: 22.1–28.9% from V1 to V4) compared to CXCR3<sup>-</sup>CCR6<sup>+</sup> (median values: 0.68–1.41%) peripheral TFH cells was found in the HIV-infected group at all visit times (**Figures 2A,B**). No significant differences were found between Rs and NRs, when these populations were analyzed in all samples tested (**Figures 2A,B**). Similar data were observed for the HIV-non-infected group (**Figures S5A,B**). The expression of CCR7, PD-1 and ICOS receptors (CCR7<sup>-</sup>PD1<sup>++</sup>ICOS<sup>+</sup> and CCR7<sup>+</sup>PD1<sup>-/+</sup>ICOS<sup>-</sup> subsets) was used as a surrogate for the activation of these cells. We saw higher frequency of activated (CCR7<sup>-</sup>PD1<sup>++</sup>ICOS<sup>+</sup>) CXCR3<sup>-</sup>CCR6<sup>-</sup> cells for NRs compared to Rs for all time points reaching statistical significance at V2, V3, and V4 (V1 = 0.053) (**Figure 2C**). In contrast to activated peripheral TFH, similar frequencies of “resting” (CCR7<sup>+</sup>PD1<sup>-/+</sup>ICOS<sup>-</sup>) CXCR3<sup>-</sup>CCR6<sup>-</sup> peripheral TFH were found for both group of vaccinees (**Figure 2D**). We did not observe a consistent pattern for activated or resting CXCR3<sup>-</sup>CCR6<sup>+</sup> peripheral TFH cells (data not shown). A similar trend, although no significant, was found when CXCR3<sup>-</sup>CCR6<sup>-</sup> activated peripheral TFH cells from HIV-non-infected individuals were analyzed (**Figures S5C,D**). Next, the association between baseline CXCR3<sup>-</sup>CCR6<sup>-</sup> activated peripheral TFH cells and the SBA responses was analyzed. The baseline frequency of activated peripheral TFH cells negatively correlated with SBA at V2 ( $r = -0.79$ ,  $p = 0.0014$ ) and V4 ( $r = -0.66$ ,  $p = 0.0124$ ) (**Figures 2E,F**). The same pattern of association was registered for correlation analysis between the frequency of activated peripheral TFH cells at V2 and V3 and SBA at V4 (data not shown). A similar trend, although not significant, was found when the baseline frequency of activated peripheral TFH cells and SBA in HIV-non-infected individuals was analyzed (data not shown).

Next, we asked whether there is any association between B cell subsets and peripheral TFH cells. We found a significant positive correlation between the baseline frequency of activated peripheral TFH cells and the frequency of plasmablasts at V2 ( $r = 0.72$ ,  $p = 0.0086$ ) (**Figure 3A**) while CXCR3<sup>-</sup>CCR6<sup>-</sup> resting peripheral TFH cells at V2 negatively correlated with short-lived plasmablasts at V2 ( $r = -0.66$ ,  $p = 0.0068$ ) (**Figure 3B**). No significant correlations were found when similar cell populations from HIV-non-infected individuals were analyzed (data not shown). Regarding the CXCR3<sup>-</sup>CCR6<sup>+</sup> peripheral TFH cells measured in HIV<sup>+</sup> cohort, we found a significant inverse correlation between both activated ( $r = -0.756$ ,  $p = 0.041$ ) and resting ( $r = -0.829$ ,  $p = 0.0167$ ) phenotypes measured before the second dose of vaccine (V3) and SBA levels post-second vaccination (V4) (data not shown). Taken together, our data indicate that the baseline frequency of activated CXCR3<sup>-</sup>CCR6<sup>-</sup> peripheral TFH cells is a negative correlate for the bactericidal antibody response to MCC vaccine in cART treated young individuals.

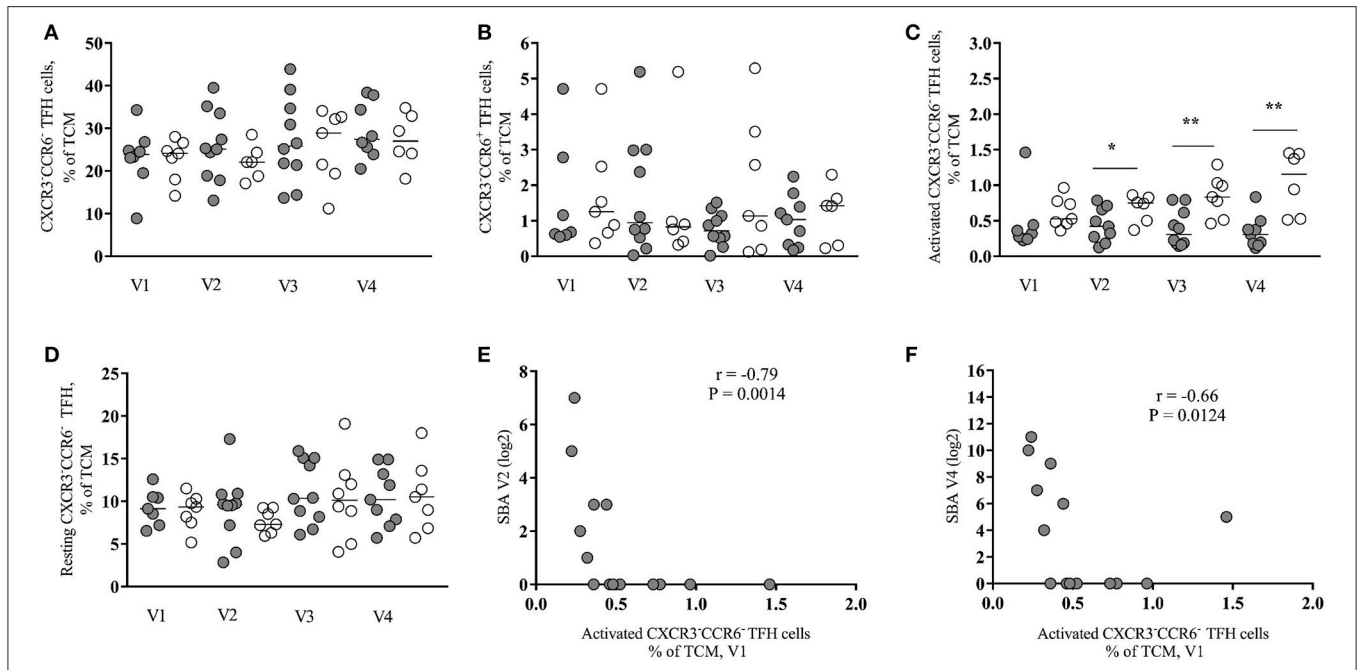
## Baseline Serum Levels of IL-4 Correlate With Vaccine-Elicited Protective Antibody Titers

As expected (20), significantly higher baseline (V1) serum sCD14 ( $p = 0.0087$ ) were found in HIV-infected compared to non-infected individuals (**Figure 4A**). TNF- $\alpha$  levels were similar for HIV-infected or non-infected, for both, Rs and NRs (data not shown). INF- $\gamma$  was detected in sera of a few individuals (data not shown) while no IL-10 or IL-21 was detected in any serum sample of our cohort. Total IgG levels (V1) were found significantly higher in HIV-infected compared to non-infected individuals ( $p = 0.0339$ ) (**Figure 4B**). However, no difference in baseline IgG or sCD14 concentration was found between HIV<sup>+</sup> Rs and NRs (data not shown). Furthermore, no difference was found in the levels of blood (V1) IgM or IgA between the two cohorts (data not shown).

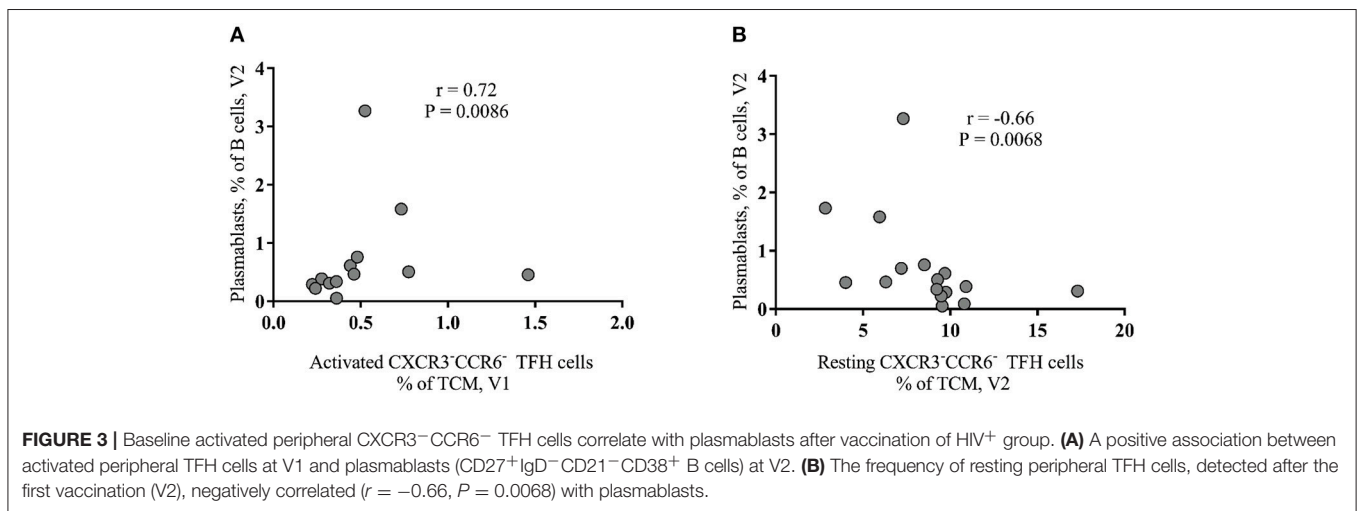
Next, the circulating levels of IL-4 and CXCL-13, cytokines involved in the follicular B cell response development (8, 9, 18) were analyzed. IL-4 levels were significantly higher in Rs compared to NRs selectively in the HIV-infected group ( $p = 0.006$ ) (**Figure 4C**, **Figure S6C** shows IL-4 levels for HIV<sup>-</sup> cohort). We found a significant correlation between baseline (V1) serum levels of IL-4 and vaccine-induced antibody titers at V2 ( $r = 0.62$ ,  $p = 0.0098$ ) (**Figure 4D**) and V4 ( $r = 0.52$ ,  $p = 0.033$ , **Figure S6B**). In contrast, a significant negative association was found between baseline IL-4 levels and the frequency of activated peripheral TFH cells after the second immunization (V4) (**Figure 4E**). Regarding CXCL-13, no significant differences were found between Rs and NRs for both cohorts (**Figures S6A,D**). Although not significant, HIV-non-infected vaccinees showed lower levels of CXCL-13 compared to HIV-infected ones (**Figures S6A,D**). There was no correlation between baseline circulating levels of IgG and CXCL-13 in HIV<sup>+</sup> subjects. However, a positive association was found between baseline levels of TNF- $\alpha$  and CXCL-13 for HIV<sup>+</sup> ( $r = 0.51$ ,  $p = 0.052$ ) and HIV<sup>-</sup> cohort ( $r = 0.62$ ,  $p = 0.035$ ) (data not shown). Therefore, IL-4 and CXCL-13 blood levels are differentially correlated with the development of the vaccine-induced B cell responses in cART treated young individuals.

## DISCUSSION

MCC vaccine has been shown to be safe and immunogenic in many high-risk populations, with results depending on the degree of immunosuppression and/or immune hyperactivation (7, 21). Suboptimal immune responses to immunization with MCC vaccine results in poor serum bactericidal antibody response that correlates with inadequate protection (22). Different of polysaccharide vaccines, conjugate vaccines induce a T-cell dependent antibody response with predominance of IgG antibodies (21, 23). We took advantage of a cohort of HIV<sup>+</sup> children/adolescents, with or without response to MCC vaccine (5–7), to further investigate possible associations between relevant circulating immune cell populations and vaccine antibody response. Our previous work has revealed that activation of circulating CD4 T cell, judged by the expression of



**FIGURE 2** | Baseline frequency of activated peripheral TFH cells inversely correlates with vaccine antibody response in HIV<sup>+</sup> individuals. **(A)** Frequency of CXCR3<sup>-</sup>CCR6<sup>-</sup> peripheral TFH cells in HIV<sup>+</sup> responders (closed circles) and non-responders (open circles) pre- (V1 and V3) and post-vaccination (V2 and V4). **(B)** Frequency of CXCR3<sup>-</sup>CCR6<sup>+</sup> peripheral TFH cells. **(C)** Frequency of activated (CCR7<sup>-</sup>PD1<sup>+</sup>ICOS<sup>+</sup>) CXCR3<sup>-</sup>CCR6<sup>-</sup> peripheral TFH cells. **(D)** Frequency of resting (CCR7<sup>+</sup>PD1<sup>-/+</sup>ICOS<sup>-</sup>) CXCR3<sup>-</sup>CCR6<sup>-</sup> peripheral TFH cells. **(E,F)** The frequency of baseline (V1) activated CXCR3<sup>-</sup>CCR6<sup>-</sup> peripheral TFH cells negatively correlated with SBA induced by one vaccine injection (V2) ( $r = -0.79$ ,  $P = 0.0014$ ) and with SBA induced by two vaccine injections (V4) ( $r = -0.66$ ,  $P = 0.0124$ ). Lines represent the median values.  $P$ -values were calculated using Mann-Whitney test. Correlations were evaluated using a non-parametric Spearman rank correlation coefficient test. \* $p < 0.05$ , \*\* $p \leq 0.01$ .

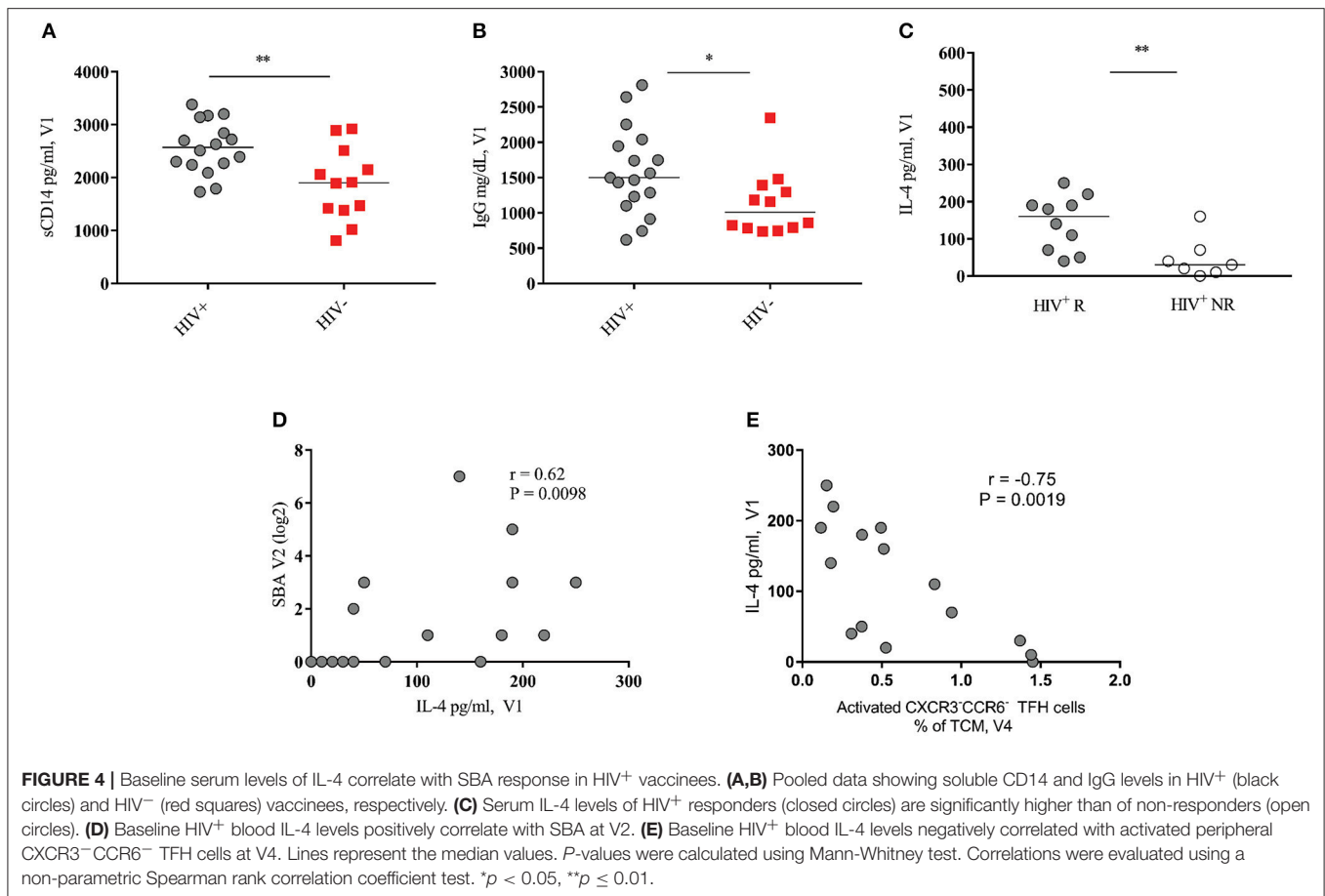


**FIGURE 3** | Baseline activated peripheral CXCR3<sup>-</sup>CCR6<sup>-</sup> TFH cells correlate with plasmablasts after vaccination of HIV<sup>+</sup> group. **(A)** A positive association between activated peripheral TFH cells at V1 and plasmablasts (CD27<sup>+</sup>IgD<sup>-</sup>CD21<sup>-</sup>CD38<sup>+</sup> B cells) at V2. **(B)** The frequency of resting peripheral TFH cells, detected after the first vaccination (V2), negatively correlated ( $r = -0.66$ ,  $P = 0.0068$ ) with plasmablasts.

CD38, HLA-DR, and CCR5, was negatively associated with MCC induced responses in this cohort (7).

We described here a significant higher baseline frequency of CD27<sup>-</sup>IgD<sup>-</sup> B cells in HIV<sup>+</sup> NRs compared to HIV<sup>+</sup> Rs, with baseline CD27<sup>-</sup>IgD<sup>-</sup> B cell frequency negatively correlating with vaccine antibody response. Furthermore, we found a negative correlation between the baseline frequency of exhausted B cells and vaccine antibody response for

HIV<sup>+</sup> cohort. Noteworthy, the frequency of exhausted B cell subset was consistently higher in NRs compared to Rs. In contrast, HIV-uninfected group had no significant differences in the frequency of exhausted B cell subset before or after vaccination. Therefore, the generalized activation of B cells, evident by the elevated blood total IgG level, accompanied by a skewed differentiation to less functional tissue-like exhausted B cells and short-lived plasmablasts is associated



with non-responsiveness to MCC vaccine in cART HIV<sup>+</sup> children.

Several recent reports have been focused on the analysis of circulating counterparts of follicular TFH (peripheral TFH) (8, 10–12). We found a consistently higher frequency of activated (CCR7<sup>-</sup>PD1<sup>++</sup>ICOS<sup>+</sup> CXCR3<sup>-</sup>CCR6<sup>-</sup> TCM) peripheral TFH cells in HIV infected NRs compared to Rs. Furthermore, this population was positively correlated with tissue like exhausted B cells but showed a negative correlation with SBA. CXCR3<sup>-</sup>CCR6<sup>-</sup> TFH cells express a Th2-like rather than a Th1- or Th17-like functional profile (9). However, T follicular regulatory cells could also express the same surface markers as described here for TFH cells (24). Due to limited cell availability, we were not able to perform functional assays to address the specific functional profile of the populations under investigation and elucidate possible mechanisms contributing to the negative effect of activated peripheral TFH cells on B cell response. However, we have observed a significant negative correlation between CD4 TCM expressing several activation markers (PD1, TIGIT, HLA-DR, and CD38) with SBA in our HIV<sup>+</sup> cohort (unpublished data). Therefore, it is possible that peripheral TFH cells express a “hyperactive” profile in NRs associated with impaired cell-cell interactions and possibly diminished help for antibody responses (19, 25, 26). In line with this, we found

significantly higher levels of sCD14 in the HIV<sup>+</sup> compared to HIV<sup>-</sup> group, indicating that despite no significant differences in duration or the age of initiation of cART, there was still a higher immune activation in HIV<sup>+</sup> individuals. Although the levels of circulating CXCL-13, a chemokine that has been described as an indicator of germinal center reactivity (27), did not differ between Rs and NRs, we found that IL-4, an important cytokine for germinal center B cell development (28, 29), was significantly upregulated in Rs compared to NRs. Furthermore, we showed here a positive correlation between baseline IL-4 levels and vaccine antibody response while it was negatively associated with the frequency of peripheral activated TFH cells. Despite their role in germinal center response, this profile could reflect the different sources, in addition to TFH cells (29, 30), for these two cytokines.

Expression of CXCR5 has been widely used for the identification of peripheral TFH cells (8, 9). This CD4 T cell pool, however, is highly heterogeneous concerning the profile of cytokine production and the capacity for *in vitro* B cell help (8, 18). Whether peripheral TFH cells originate from lymph node germinal center TFH cells or represent a transient pre-TFH or a follicular, non-germinal center TFH population is not well understood (18, 19, 25). Their increased frequency found in NRs implies that higher activation/differentiation of CD4 T cells within the lymph node is not necessarily associated

with induction of vaccine antibody response. Particularly in chronically HIV-infected patients, where other factors including lymph node structure damage, follicular hyperplasia and lysis and loss of follicular dendritic cell network (31, 32) could play a major role for the development of vaccine-induced response. Furthermore, cART results in low/undetectable viremia and lower immune activation, although not to levels found in HIV<sup>-</sup> individuals, in blood (33) and lymph node level (34).

Given the limited, if any, access to lymph nodes from vaccine clinical trials the identification of biomarkers or blood signatures for monitoring vaccine efficacy is of great importance. An association between vaccine responses and peripheral TFH cells (12, 35–37) or CXCL-13 (27, 38, 39), a surrogate of germinal center reactivity (27) has been previously shown. We have recently reported a negative correlation between baseline levels of circulating CXCL-13 and hepatitis B vaccine responses in treated HIV infected adults (39). However, our current data show that this is not the case for cART infected young individuals receiving MCC vaccine. Whether this is related to the nature of the immunogen or other biological factors like aging is not known. Further studies are needed to confirm whether the simultaneous analysis of circulating CXCL-13, IL-4 and activated peripheral TFH cells could be used as a “biomarker” for monitoring vaccine efficiency. Furthermore, whether the capacity for response to specific immunogens reflects the overall quality of host immune responses to HIV (39) is not clear. A direct comparison between Th1, Th2, and lymph node TFH specific responses and immunogen-specific B cell responses would provide valuable information regarding this. To this end, the use of non-human primate models, where the parallel analysis of circulating and lymph node dynamics is feasible, is of great importance.

## ETHICS STATEMENT

All participant’s parents or legal guardians provided written informed consent, as well as the participants who were aware of their HIV-infection status. The study was approved by the IPPMG Institutional Review Board (IRB, number 24/09)

## REFERENCES

- Borrow R, Alarcón P, Carlos J, Caugant DA, Christensen H, Debbag R, et al. Global meningococcal initiative. the global meningococcal initiative: global epidemiology, the impact of vaccines on meningococcal disease and the importance of herd protection. *Expert Rev Vaccines* (2017) 16:313–28. doi: 10.1080/14760584.2017.1258308
- Sáfadi MA, Berezin EN, Arlant LH. Meningococcal disease: epidemiology and early effects of immunization programs. *J Pediatric Infect Dis Soc.* (2014) 3:91–3. doi: 10.1093/jpids/piu027
- Manual dos Centros de Referência para Imunobiológicos Especiais. Série A. Normas e Manuais Técnicos. 3rd Edn.* Brasília: Ministério da Saúde, Secretaria de Vigilância em Saúde, Departamento de Vigilância Epidemiológica (2006).
- Nota Informativa N° 311, de 2016/CGPNI/DEVIT/SVS/MS.* Brasília: Ministério da Saúde, Secretaria de Vigilância em Saúde, Departamento de Vigilância das Doenças Transmissíveis (2016).
- Frota AC, Milagres LG, Harrison LH, Ferreira B, Menna Barreto D, Pereira GS, et al. Immunogenicity and safety of meningococcal C

and Brazilian Ministry of Health Ethics Commission (*Comissão Nacional de Ética em 000Pesquisa*, CONEP, number 15578). Details about the inclusion and exclusion criteria, IRB and participant’s consent were previously published (5).

## AUTHOR CONTRIBUTIONS

LM performed the experiments and analysis and wrote the manuscript. GS, MF, BC, and WP-M performed experiments. AF, BF, DB, and CH coordinated the recruitment and immunization of patients, the collection of biological specimens and patient follow-up. CP designed, analyzed experiments and wrote the manuscript. RK provided critical review of data and manuscript. All authors read and approved the final version of the manuscript.

## FUNDING

This research was supported by the Intramural Research Program of the Vaccine Research Center, NIAID, National Institutes of Health and CAVD grant (#OP1032325) from the Bill and Melinda Gates Foundation (RK). LGM received a scholarship support from Conselho Nacional de Desenvolvimento Científico e Tecnológico, Brazil (CNPq-PDE, process # 205274/2014-5) and a research grant from CNPq (Grant # 449775/2014-3). We are also grateful to Fogarty Institute of the National Institutes of Health under award number 5R01TW008397 to CH. GS received a scholarship from CAPES.

## ACKNOWLEDGMENTS

This study would not be possible without the consent of the volunteers/guardians and patients help.

## SUPPLEMENTARY MATERIAL

The Supplementary Material for this article can be found online at: <https://www.frontiersin.org/articles/10.3389/fimmu.2018.02500/full#supplementary-material>

- conjugate vaccine in children and adolescents infected and uninfected with HIV in Rio de Janeiro, Brazil. *Pediatr Infect Dis J.* (2015) 34:e113–18. doi: 10.1097/INF.0000000000000630
- Frota ACC, Ferreira B, Harrison LH, Pereira GS, Pereira-Manfro W, Machado ES, et al. Safety and immune response after two-dose meningococcal C conjugate immunization in HIV-infected children and adolescents in Rio de Janeiro, Brazil. *Vaccine* (2017) 35:7042–48. doi: 10.1016/j.vaccine.2017.10.043
- Milagres LG, Costa PR, Santos BA, Silva GP, Cruz AC, Pereira-Manfro WF, et al. CD4<sup>+</sup> cell activation impairs serogroup C *Neisseria meningitidis* vaccine response in HIV-infected children. *AIDS* (2013) 27:2697–705. doi: 10.1097/QAD.000000000000007
- Morita R, Schmitt N, Benteibibel SE, Ranganathan R, Bourdery L, Zurawski G, et al. Human blood CXCR5<sup>+</sup>CD4<sup>+</sup> T cells are counterparts of T follicular cells and contain specific subsets that differentially support antibody secretion. *Immunity* (2011) 34:108–21. doi: 10.1016/j.immuni.2010.12.012
- Schmitt N, Benteibibel SE, Ueno H. Phenotype and functions of memory TFH cells in human blood. *Trends Immunol.* (2014) 35:436–42. doi: 10.1016/j.it.2014.06.002



10. Bentebibel SE, Khurana S, Schmitt N, Kurup P, Mueller C, Obermoser G, et al. ICOS(+)/PD-1(+)/CXCR3(+) T follicular helper cells contribute to the generation of high-avidity antibodies following influenza vaccination. *Sci Rep.* (2016) 6:26494. doi: 10.1038/srep26494
11. Parmigiani A, Alcaide ML, Freguja R, Pallikkuth S, Frasca D, Fischl MA, et al. Impaired antibody response to influenza vaccine in HIV-infected and uninfected aging women is associated with immune activation and inflammation. *PLoS ONE* (2013) 8:e79816. doi: 10.1371/journal.pone.0079816
12. Pilkinton MA, Nicholas KJ, Warren CM, Smith RM, Yoder SM, Talbot HK, et al. Greater activation of peripheral T follicular helper cells following high dose influenza vaccine in older adults forecasts seroconversion. *Vaccine* (2017) 35:329–36. doi: 10.1016/j.vaccine.2016.11.059
13. Portugal S, Obeng-Adjei N, Moir S, Crompton PD, Pierce SK. Atypical memory B cells in human chronic infectious diseases: an interim report. *Cell Immunol.* (2017) 321:18–25. doi: 10.1016/j.cellimm.2017.07.003
14. Kohli A, Funk E, Burbelo P, Barrett L, Meissner EG, Santich B, et al. Persistently elevated abnormal B-cell subpopulations and anti-core antibodies in patients co-infected with HIV/HCV who relapse. *J Med Virol.* (2015) 87:544–52. doi: 10.1002/jmv.24089
15. Salisbury D, Ramsay M. *Meningococcal: the Green Book*, Chapter 22. London: Public Health England (2013).
16. Moir S, Fauci AS. B cells in HIV infection and disease. *Nat Rev Immunol.* (2009) 9:235–45. doi: 10.1038/nri2524
17. Curtis DJ, Muresan P, Nachman S, Fenton T, Richardson KM, Dominguez T, et al. Characterization of functional antibody and memory B-cell responses to pH1N1 monovalent vaccine in HIV-infected children and youth. *PLoS ONE* (2015) 10:e0118567. doi: 10.1371/journal.pone.0118567
18. Boswell KL, Paris R, Boritz E, Ambrozak D, Yamamoto T, Darko S, et al. Loss of circulating CD4 T cells with B cell helper function during chronic HIV infection. *PLoS Pathog.* (2014) 10:e1003853. doi: 10.1371/journal.ppat.1003853
19. Crotty S. T follicular helper cell differentiation, function, and roles in disease. *Immunity* (2014) 41:529–42. doi: 10.1016/j.immuni.2014.10.004
20. Somsouk M, Estes JD, Deleage C, Dunham RM, Albright R, Inadomi JM, et al. Gut epithelial barrier and systemic inflammation during chronic HIV infection. *AIDS* (2015) 29:43–51. doi: 10.1097/QAD.0000000000000511
21. Siberry GK, Williams PL, Lujan-Zilbermann J, Warshaw MG, Spector SA, Decker MD, et al. Phase I/II, open-label trial of safety and immunogenicity of meningococcal groups A, C, Y, and W-135 polysaccharide diphtheria toxoid conjugate vaccine in human immunodeficiency virus-infected adolescents. *Pediatr Infect Dis J.* (2010) 29:391–6. doi: 10.1097/INF.0b013e3181c38f3b
22. HaMcIntosh ED, Bröker M, Wassil J, Welsch JA, Borrow R. Serum bactericidal antibody assays - the role of complement in infection and immunity. *Vaccine* (2015) 33:4414–21. doi: 10.1016/j.vaccine.2015.07.019
23. Hart M, Steel A, Clark SA, Moyle G, Nelson M, Henderson DC, et al. Loss of discrete memory B cell subsets is associated with impaired immunization responses in HIV-1 infection and may be a risk factor for invasive pneumococcal disease. *J Immunol.* (2007) 178:8212–20. doi: 10.4049/jimmunol.178.12.8212
24. Maceiras AR, Fonseca VR, Agua-Doce A, Graca L. T follicular regulatory cells in mice and men. *Immunology* (2017) 152:25–35. doi: 10.1111/imm.12774
25. He J, Tsai LM, Leong YA, Hu X, Ma CS, Chevalier N, et al. Circulating precursor CCR7(lo)PD-1(hi) CXCR5<sup>+</sup> CD4<sup>+</sup> T cells indicate TFH cell activity and promote antibody responses upon antigen reexposure. *Immunity* (2013) 39:770–81. doi: 10.1016/j.immuni.2013.09.007
26. Cubas RA, Mudd JC, Savoye AL, Perreau M, van Grevenynghe J, Metcalf T, et al. Inadequate T follicular cell help impairs B cell immunity during HIV infection. *Nat Med* (2013) 19:494–9. doi: 10.1038/nm.3109
27. Havenar-Daughton C, Lindqvist M, Heit A, Wu JE, Reiss SM, Kendric K, et al. CXCL13 is a plasma biomarker of germinal center activity. *Proc Natl Acad Sci USA.* (2016) 113:2702–7. doi: 10.1073/pnas.1520112113
28. Turqueti-Neves A, Otte M, Prazeres da Costa O, Höpken UE, Lipp M, Buch T, et al. B-cell-intrinsic STAT6 signaling controls germinal center formation. *Eur J Immunol.* (2014) 44:2130–38. doi: 10.1002/eji.201344203
29. Yusuf I, Kageyama R, Monticelli L, Johnston RJ, Ditoro D, Hansen K, et al. Germinal center T follicular helper cell IL-4 production is dependent on signaling lymphocytic activation molecule receptor (CD150). *J Immunol.* (2010) 185:190–202. doi: 10.4049/jimmunol.0903505
30. Kroenke MA, Eto D, Locci M, Cho M, Davidson T, Haddad EK, et al. Bcl6 and Maf cooperate to instruct human follicular helper CD4 T cell differentiation. *J Immunol.* (2012) 188:3734–44. doi: 10.4049/jimmunol.1103246
31. Estes JD. Pathobiology of HIV/SIV-associated changes in secondary lymphoid tissues. *Immunol Rev* (2013) 254:65–77. doi: 10.1111/immr.12070
32. Dave RS, Jain P, Byrareddy SN. Follicular dendritic cells of lymph nodes as human immunodeficiency virus/simian immunodeficiency virus reservoirs and insights on cervical lymph node. *Front Immunol.* (2018) 9:805. doi: 10.3389/fimmu.2018.00805
33. Taiwo B, Barcena L, Tressler R. Understanding and controlling chronic immune activation in the HIV-infected patients suppressed on combination antiretroviral therapy. *Curr HIV/AIDS Rep.* (2013) 10:21–32. doi: 10.1007/s11904-012-0147-3
34. Petrovas C, Ferrando-Martinez S, Gerner MY, Casazza JP, Pegu A, Deleage C, et al. Follicular CD8 T cells accumulate in HIV infection and can kill infected cells *in vitro* via bispecific antibodies. *Sci Transl Med.* (2017) 9:eag2285. doi: 10.1126/scitranslmed.aag2285
35. Pallikkuth S, Parmigiani A, Silva SY, George VK, Fischl M, Pahwa R et al. Impaired peripheral blood T-follicular helper cell function in HIV-infected nonresponders to the 2009 H1N1/09 vaccine. *Blood* (2012) 120:985–93. doi: 10.1182/blood-2011-12-396648
36. de Armas LR, Cotugno N, Pallikkuth S, Pan L, Rinaldi S, Sanchez MC et al. Induction of IL21 in peripheral T follicular helper cells is an indicator of influenza vaccine response in a previously vaccinated HIV-infected pediatric cohort. *J Immunol.* (2017) 198:1995–2005. doi: 10.4049/jimmunol.1601425
37. Koutsakos M, Wheatley AK, Loh L, Clemens EB, Sant S, Nüssing S et al. Circulating T(FH) cells, serological memory, and tissue compartmentalization shape human influenza-specific B cell immunity. *Sci Transl Med.* (2018) 10:eaa8405. doi: 10.1126/scitranslmed.aan8405
38. Amodio D, Cotugno N, Macchiarulo G, Rocca S, Dimopoulos Y, Castrucci MR et al. Quantitative multiplexed imaging analysis reveals a strong association between immunogen-specific B cell responses and tonsillar germinal center immune dynamics in children after influenza vaccination. *J Immunol.* (2018) 200:538–550. doi: 10.4049/jimmunol.1701312
39. Paris RM, Milagres LG, Moysi E, Okulicz JF, Agan BK, Ganesan A, et al. Lower baseline germinal center activity and preserved Th1 immunity are associated with Hepatitis B vaccine response in treated HIV infection. *Pathog Immun.* (2017) 2:66–88. doi: 10.20411/pai.v2i1.175

**Conflict of Interest Statement:** The authors declare that the research was conducted in the absence of any commercial or financial relationships that could be construed as a potential conflict of interest.

Copyright © 2018 Milagres, Silva, Pereira-Manfro, Frota, Hofer, Ferreira, Barreto, Figueredo, Coelho, Villela, Petrovas and Koup. This is an open-access article distributed under the terms of the Creative Commons Attribution License (CC BY). The use, distribution or reproduction in other forums is permitted, provided the original author(s) and the copyright owner(s) are credited and that the original publication in this journal is cited, in accordance with accepted academic practice. No use, distribution or reproduction is permitted which does not comply with these terms.