



A Wide Spectrum of Autoimmune Manifestations and Other Symptoms Suggesting Immune Dysregulation in Patients With Cartilage-Hair Hypoplasia

Svetlana Vakkilainen^{1,2*}, Riikka Mäkitie^{2,3}, Paula Klemetti¹, Helena Valta¹, Mervi Taskinen¹, Eystein Sverre Husebye^{4,5,6} and Outi Mäkitie^{1,2,7}

¹ Children's Hospital, University of Helsinki and Helsinki University Hospital, Helsinki, Finland, ² Folkhälsan Research Center, Helsinki, Finland, ³ University of Helsinki, Helsinki, Finland, ⁴ Department of Clinical Science, University of Bergen, Bergen, Norway, ⁵ K.G. Jebsen Centre for Autoimmune Disorders, University of Bergen, Bergen, Norway, ⁶ Department of Medicine, Haukeland University Hospital, Bergen, Norway, ⁷ Department of Molecular Medicine and Surgery, Karolinska Institutet and Clinical Genetics, Karolinska University Hospital, Stockholm, Sweden

OPEN ACCESS

Edited by:

Waleed Al-Herz,
Kuwait University, Kuwait

Reviewed by:

Michel J. Massaad,
American University of Beirut Medical
Center, Lebanon
Siobhan Oisin Burns,
University College London,
United Kingdom

*Correspondence:

Svetlana Vakkilainen
svetlana.kostjukovits@helsinki.fi

Specialty section:

This article was submitted to
Primary Immunodeficiencies,
a section of the journal
Frontiers in Immunology

Received: 19 August 2018

Accepted: 05 October 2018

Published: 25 October 2018

Citation:

Vakkilainen S, Mäkitie R, Klemetti P,
Valta H, Taskinen M, Husebye ES and
Mäkitie O (2018) A Wide Spectrum of
Autoimmune Manifestations and
Other Symptoms Suggesting Immune
Dysregulation in Patients With
Cartilage-Hair Hypoplasia.
Front. Immunol. 9:2468.
doi: 10.3389/fimmu.2018.02468

Background: Mutations in *RMRP*, encoding a non-coding RNA molecule, underlie cartilage-hair hypoplasia (CHH), a syndromic immunodeficiency with multiple pathogenetic mechanisms and variable phenotype. Allergy and asthma have been reported in the CHH population and some patients suffer from autoimmune (AI) diseases.

Objective: We explored AI and allergic manifestations in a large cohort of Finnish patients with CHH and correlated clinical features with laboratory parameters and autoantibodies.

Methods: We collected clinical and laboratory data from patient interviews and hospital records. Serum samples were tested for a range of autoantibodies including celiac, anti-cytokine, and anti-21-hydroxylase antibodies. Nasal cytology samples were analyzed with microscopy.

Results: The study cohort included 104 patients with genetically confirmed CHH; their median age was 39.2 years (range 0.6–73.6). Clinical autoimmunity was common (11/104, 10.6%) and included conditions previously undescribed in subjects with CHH (narcolepsy, psoriasis, idiopathic thrombocytopenic purpura, and multifocal motor axonal neuropathy). Patients with autoimmunity more often had recurrent pneumonia, sepsis, high immunoglobulin (Ig) E and/or undetectable IgA levels. The mortality rates were higher in subjects with AI diseases ($\chi^2_{(2)} = 14.056$, $p = 0.0002$). Several patients demonstrated serum autoantibody positivity without compatible symptoms. We confirmed the high prevalence of asthma (23%) and allergic rhinoconjunctivitis (39%). Gastrointestinal complaints, mostly persistent diarrhea, were also frequently reported (32/104, 31%). Despite the history of allergic rhinitis, no eosinophils were observed in nasal cytology in five tested patients.

Conclusions: AI diseases are common in Finnish patients with CHH and are associated with higher mortality, recurrent pneumonia, sepsis, high IgE and/or undetectable IgA levels. Serum positivity for some autoantibodies was not associated with clinical autoimmunity. The high prevalence of persistent diarrhea, asthma, and symptoms of inflammation of nasal mucosa may indicate common pathways of immune dysregulation.

Keywords: allergy, asthma, autoantibodies, enteropathy, *RMRP*

INTRODUCTION

Cartilage-hair hypoplasia (CHH, OMIM #250250) is caused by mutations in *RMRP*, which encodes the long non-coding RNA component of mitochondrial RNA-processing endoribonuclease. CHH is characterized by metaphyseal chondrodysplasia, hair hypoplasia, combined immunodeficiency, anemia, and increased risk of malignancies. Autoimmune (AI) diseases have occasionally been reported in CHH, such as enteropathy, hemolytic anemia (AIHA), hypoparathyroidism, hypo- or hyperthyroidism, juvenile rheumatoid arthritis and neutropenia (1–4). The prevalence of asthma is increased and has been reported in 16% (4/25) of Amish and 24% (10/34) of Finnish patients (3, 5). Allergic rhinoconjunctivitis is also excessively prevalent (41%, 23/56) in the Finnish CHH population (6).

RMRP mutations induce cell cycle abnormalities resulting in defective proliferation and increased apoptosis of T cells (7, 8). Patients with CHH have markedly reduced numbers of recent thymic emigrants and low naïve CD4+ and CD8+ cells, but normal counts of CD4+CD25^{high}CD127^{low} regulatory T cells and double-negative T cells (6, 8). Eosinophilia and increased immunoglobulin (Ig) E levels are uncommon (6).

The knowledge of the disease mechanisms in CHH has expanded in recent years to include impaired gene regulation (9) and defects in telomere biology (10, 11). In addition, lack of autoimmune regulator (AIRE) expression and absence of Foxp3+ T cells in the thymus of a single patient with CHH has been reported (12). The loss of AIRE function associated with *AIRE* mutations is responsible for Autoimmune Polyendocrinopathy-Candidiasis-Ectodermal Dystrophy (APECED), a recognized polyendocrine syndrome with defective T and B cell tolerance (13, 14). This could support a possible role of impaired regulatory T cell function in the pathogenesis of CHH.

We have recently demonstrated broad autoantibody reactivity in subjects with CHH using the microarray technique (15). Compared with healthy controls, CHH patients showed significantly higher reactivity for autoantibodies against gliadin, nuclear antigens, thyroglobulin, vitronectin, as well as for myositis-specific antibodies.

In order to further explore the prevalence and characteristics of AI and allergic manifestations in individuals with CHH, we

analyzed clinical and laboratory data for a large group of Finnish CHH patients. We also tested serum samples from several of these patients for a variety of autoantibodies. To complement our previous research, we applied different measurement methods and tested mostly for autoantibodies that were not included in our recent study (15).

METHODS

We originally invited all known Finnish patients with CHH to a prospective cohort study in 1985–1991. Those who agreed to participate (Cohort 1, $n = 80$) underwent interview, clinical examination and blood sampling; *RMRP* mutation testing was performed when the gene was identified in 2001. A follow-up visit was conducted in 2012–2015, when Cohort 1 and all other thus far identified Finnish CHH patients were contacted and invited for a clinical visit and blood tests. This study thus included three groups of patients (in total 104 patients): (1) patients from Cohort 1 who attended the follow-up visit ($n = 32$), (2) patients from Cohort 1 who were unavailable for the follow-up visit ($n = 48$), and (3) patients recruited to the study at the follow-up visit (Cohort 2, $n = 24$). We collected complete data by means of interviews and from hospital records for all patients participating the follow-up visit ($n = 56$). For those patients from Cohort 1 who did not attend the follow-up visit, we obtained health information from two Finnish National Medical Databases. The Care Register for Health Care has since 1969 recorded the activities of health centers, hospitals and other institutions providing inpatient care, as well as home-nursing care. Outpatient primary health care data was derived from the Register of Primary Health Care Visits, which covers all health centers in Finland since 2011. Database information included health service providers, dates of the visits, diagnoses, as well as diagnostic and therapeutic procedures. We then contacted all identified hospitals and requested all patients' detailed health records for the analysis. Special attention was given to the signs and symptoms attributed to autoimmunity, such as skin rashes, joint symptoms and gastrointestinal complaints and they were systematically discussed during the interviews.

Asthma diagnosis was made by physicians and/or pulmonologists using spirometry and assessment of response to asthma medications. Allergy was similarly diagnosed by physicians based on clinical presentation and in some cases, on skin tests and/or serum specific IgE levels. Sepsis diagnosis was made by physicians and supported by positive findings in blood cultures.

Abbreviations: AI, autoimmune; AIHA, autoimmune hemolytic anemia; APECED, Autoimmune Polyendocrinopathy-Candidiasis-Ectodermal Dystrophy; CHH, cartilage-hair hypoplasia; DVA, duodenal villous atrophy; Ig, immunoglobulin; IL, interleukin; *RMRP*, RNA component of mitochondrial RNA-processing endoribonuclease.

Serum samples for autoantibody measurement were obtained from those who agreed to donate blood at the follow-up visit ($n = 33$) and stored at -70°C until analyses. The analyzed autoantibodies were related to celiac disease, based on frequent gastrointestinal complaints among the patients, and on autoantibodies that are commonly seen in patients with *AIRE* mutations (Table 1). One of the eight chosen autoantibodies (deamidated gliadin peptide IgG) has previously been tested with microarray technique in 16 of the available 33 samples (15).

To further evaluate the cause for symptoms related to rhinoconjunctivitis we examined nasal samples for eosinophilic, neutrophilic and goblet cells from five patients with physician-diagnosed allergic rhinitis. Subjects had refrained from application of local nasal decongestants, steroids or systemic antihistamines prior to sampling. Samples were taken during spring and summer months (May–August), from both anterior nares beneath the middle turbinates using a standard cotton swab. Samples were let to set on a glass slide at room temperature. Cytology was evaluated by an experienced technician using eosin-methylene blue staining and microscopy.

Statistical analyses were performed with IBM SPSS version 23 software. Fisher's exact test, logistic regression analysis and Kaplan-Meier method were implicated when appropriate.

The study protocol was approved by the Institutional Research Ethics Committee at Helsinki University Hospital, Finland, and informed consents were obtained from all participants and caregivers.

RESULTS

Our study group included 104 patients (61 women, 43 men) with genetically confirmed CHH. Their median age at the last follow-up was 39.2 years (range 0.6–73.6 years). There were 17 children aged <18.0 years, 49 young adults (18.0–45.0 years) and 38 adults aged >45.0 years. The majority of patients ($n = 79$; 76%) were homozygous for the g.70A>G *RMRP* mutation, others were compound heterozygous for g.70A>G and either g.262G>T

($n = 22$; 21%) or duplication TACTCTGTGA at -13 ($n = 3$; 3%).

Altogether 11 patients (11/104, 10.6%) had been diagnosed with AI conditions (Table 2). Clinical features of all study patients are presented in Table 3. In addition to AI diseases that have been previously reported in patients with CHH (enteropathy, hemolytic anemia, hyperthyroidism, and juvenile rheumatoid arthritis), we report psoriasis, idiopathic thrombocytopenic purpura, narcolepsy, and multifocal motor axonal neuropathy all of which have been regarded as autoimmune diseases (19–22).

Among those with autoimmunity, recurrent pneumonia, and sepsis were more frequently documented than in those without autoimmunity (6/11, 55% vs. 13/93, 14%, $p = 0.001$, B coefficient 2.65 and 4/11, 36% vs. 6/93, 6%, $p = 0.019$, B coefficient 2.14, respectively). Rates of autoimmunity were higher in patients with elevated IgE levels (2/5, 40%; $p = 0.011$, B coefficient 2.96) and in patients with undetectable IgA levels (3/5, 60%; $p = 0.036$, B coefficient 3.33), as compared with patients with normal IgE and IgA levels.

Among patients from Cohort 1, 10/80 individuals have developed AI diseases during follow-up. The Kaplan-Meier analysis (log rank test) of these 80 patients demonstrated that survival distributions for patients with and without AI conditions were significantly different, $\chi^2_{(2)} = 14.056$, $p = 0.0002$ (Figure 1).

More than half of our patients (56/104, 54%) suffered from arthralgia or morning joint stiffness, but only one was diagnosed with genuine seronegative juvenile polyarthritis. Osteoarthritis was common among patients with arthralgia (20/56, 36%) and was increasingly prevalent with increasing age. Mean age at last follow-up in those with osteoarthritis was 51.7 years, while it was 35.2 years in those without osteoarthritis. Patients with a history of arthralgia reported more often sinusitis (38/56, 68% vs. 18/48, 38%, $p = 0.002$, B coefficient 1.3) and pollen allergy (27/56, 48% vs. 13/48, 27%, $p = 0.035$, B coefficient 0.95). When arthralgia, asthma and diarrhea were compiled in a Venn diagram ($n = 71$), asthma and diarrhea overlapped with arthralgia in 7 and 12 patients, respectively (Figure 2). The overlap, however, did not

TABLE 1 | Antibody assays performed on serum samples of patients with cartilage-hair hypoplasia.

Antibody	Abbreviation	Measurement method	Normal values in adults*
Deamidated gliadin peptide IgA	DGP-IgA	FEIA	<7 U/ml
Deamidated gliadin peptide IgG	DGP-IgG	FEIA	<7 U/ml
Tissue transglutaminase IgA	tTG-IgA	FEIA	<7 U/ml
Tissue transglutaminase IgG	tTG-IgG	FEIA	<10 U/ml
Endomysium IgA	EMA-IgA	IIF	Titer <5
Endomysium IgG	EMA-IgG	IIF	Titer <5
Interleukin 17 IgG	IL-17	Radioligand binding ¹	<218 Index
Interleukin 22 IgG	IL-22	Radioligand binding ¹	<270 Index
Interferon ω IgG	IFN- ω	Radioligand binding ²	<200 Index
21-Hydroxylase IgG	21-OH	Radioligand binding ³	<57 Index

FEIA fluorometric enzyme immunoassay, Ig immunoglobulin, IIF indirect immunofluorescence, *Age-specific institutional reference values were used to evaluate results in pediatric patients.

¹(16).

²(17).

³(18).

TABLE 2 | Autoimmune conditions diagnosed in 11 out of 104 patients with cartilage-hair hypoplasia.

No.	AI disease	Age at diagnosis of AI disease, yrs	Age at the latest follow-up, yrs	Treatment	Outcome of AI disease	Other symptoms
1	Enteropathy	3	Died in young adulthood	None specific	Died from pneumonia following bowel occlusion	Anemia, arthralgia, asthma, pneumonia
	MMAN	28		IVIg	Moderate clinical improvement	
2	Seronegative juvenile polyarthritis	6	Young adulthood	NSAIDs, i/a and oral steroids, MTX, HCQ, leflunomide	Etanercept is under consideration for relapsing arthritis	None
3	AIHA	10	Young adulthood	IVIg	Remission after 9 yrs of treatment	Arthralgia, Hirschsprung disease, lymphoma, pneumonia, sepsis
4	Narcolepsy	11	Young adulthood	None specific, narcolepsy was not related to influenza vaccine	No remission	Allergy, anemia
5	AIHA	11	Died in adolescence	Prednisolone	Remission after short course of therapy	Anemia, pneumonia, sepsis
	Psoriasis	12		Local therapy	Disease under control until death	
	Enteropathy	14		None specific	Died from pneumonia following profound diarrhea	
6	Graves' disease	15	Young adulthood	Carbimazole, thyroidectomy	Cured after thyroidectomy	Allergy, arthralgia
7	ITP	29	Died in adulthood	Prednisolone	Remission after 1.5 yrs of therapy. Died from lymphoma	Allergy, arthralgia, diarrhea, lymphoma, pneumonia, sepsis
8	Celiac disease*	30	Died in adulthood	Unknown	Unknown. Died from pneumonia	Arthralgia, pneumonia
9	Enteropathy	35	Young adulthood	None specific	Investigations ongoing	Anemia, arthralgia, pneumonia
10	Psoriasis	41	Died in adulthood	Local therapy	Disease under control until death from lymphoma	Allergy, arthralgia, Hirschsprung disease, lymphoma, pneumonia
11	Ulcerative colitis	68	Died in mature adulthood	Mesalamine	Disease under control until death from end-stage lung disease	Allergy, asthma, bronchiectasis, meylodyslasia, pneumonia

AI, autoimmune; AIHA, autoimmune hemolytic anemia; HCQ, hydroxychloroquine; i/a, intra-articular; ITP, idiopathic thrombocytopenic purpura; IVIG, intravenous immunoglobulin; MMAN, multifocal motor axonal neuropathy; MTX, methotrexate; No, patient number; NSAID, nonsteroidal anti-inflammatory drug; yrs, years. *data on histopathology is not available.

reach statistical significance. This group of 71 patients contained most of the patients with AI conditions (10/11).

Gastrointestinal symptoms were common in our cohort (32/104, 31%) and the most frequent complaint was prolonged/recurrent diarrhea. In at least three patients with diarrhea, broad screening for bacterial, viral and parasitic infections was negative. Twelve patients followed lactose-free diet, but this did not alleviate diarrhea. Eight patients had undergone colonoscopy, with normal results in all except one subject with ulcerative colitis. Gastroscopy findings were abnormal in 10/18 patients and included gastroesophageal reflux ($n = 5$), chronic gastritis ($n = 5$), peptic ulcer ($n = 2$), and/or duodenal villous atrophy (DVA, $n = 3$). Another patient had received the diagnosis of celiac disease, but data on histology were unavailable. Significantly more patients with diarrhea reported arthralgia (18/23, 78% vs. 38/81, 47%, $p = 0.011$, B coefficient 1.41), as compared with those without diarrhea. In the subgroup of patients with osteoarthritis ($n = 20$), diarrhea was not more common than in those without osteoarthritis.

Anemia was diagnosed in 32 patients (31%), mostly in childhood. Thirteen of these patients (41%) required red blood cell transfusions. Two subjects had AIHA, in others anemia was hypoplastic and attributed to CHH itself and mostly resolved by adulthood. Four of the patients required blood transfusions as adults. There were no cases of AI neutropenia, but one patient had idiopathic thrombocytopenic purpura.

Physician-diagnosed asthma (23%) and allergy (39%) were both highly prevalent. Asthma was diagnosed in 29% (5/17) of children and in 22% (19/87) of adults. In some patients with clinical symptoms of pollen allergy, skin testing and/or serum allergen-specific IgE testing had been negative. Elevated IgE levels were infrequently documented (5/69 patients), also in subjects without allergic symptoms. Eosinophilia was more common in subjects with pollen allergy (5/34, 15% vs. 1/50, 2%, $p = 0.038$). Hospitalization for pneumonia and/or surgery for sinopulmonary and/or ear infections were more common in patients with asthma [19/24 (79%) vs. 31/80 (39%), $p = 0.019$, B coefficient 1.13].

TABLE 3 | Clinical and laboratory characteristics of 104 patients with cartilage-hair hypoplasia.

Manifestations	No. of patients (%)	Comments
Recurrent sinopulmonary and/or ear infections	84/104 (81)	Acute otitis media, rhinosinusitis and/or pneumonia
Hospitalization and/or surgery required	50/80 (63)	Tympanostomy and/or sinus surgery
Physician-diagnosed asthma	24/104 (23)	
Allergy to pollen and/or animal	40/104 (39)	Skin testing and/or allergen-specific serum IgE
Positive allergy testing	5/9 (56)	
Joint symptoms	56/104 (54)	Arthralgia or morning joint stiffness
Arthrosis	20/56 (36)	Confirmed radiologically
Juvenile rheumatoid arthritis	1/56 (2)	Seronegative polyarthritis
Gastrointestinal symptoms	32/104 (31)	
Prolonged and/or recurrent diarrhea	23/32(72)	
Dyspepsia	18/32 (56)	
Gastroscopy performed	18/32 (56)	Normal results in eight (8/18, 44%) patients
Colonoscopy performed	8/32 (25)	Normal in all except one case of ulcerative colitis
Chronic gastritis	5/18 (28)	Diagnosed on gastroscopy
Duodenal villous atrophy	3/18 (17)	Diagnosed on gastroscopy
Anemia	32/104 (31)	
Red blood cell transfusion required	13/32 (41)	
AIHA	2/32 (6)	
Elevated IgE*	5/69 (7)	
Elevated deamidated gliadin peptide IgA	2/33 (6)	Values of 9 and 20 (normal <7 U/ml)
Elevated deamidated gliadin peptide IgG	2/33 (6)	Values of 10 and 14 (normal <7 U/ml)
Elevated interferon ω IgG	1/33 (3)	Value of 206 (normal <200 Index)
Elevated 21-Hydroxylase IgG	2/33 (6)	Values of 67 and 77 (normal <57 Index)

AIHA, autoimmune hemolytic anemia; Ig, immunoglobulin; No, number. *According to local laboratory age-adjusted reference values.

Subgroup of Patients Tested for Autoantibodies

Serum samples were available from 33 adult patients (21 women, 12 men) at median age of 45.4 years (range 19.9–69.1 years). One patient was receiving immunoglobulin substitution at the time of blood sampling, he tested negative for all autoantibodies. One had unmeasurable IgA, therefore EMA-IgG and tTG-IgG were measured in serum with normal results. In a few patients, we detected slightly elevated autoantibodies including anti-interferon- ω IgG (IFN- ω , $n = 1$), anti-21-hydroxylase IgG (21-OH, $n = 2$), anti-gliadin-peptide IgA ($n = 2$) and anti-gliadin-peptide IgG ($n = 2$; **Tables 3, 4**). These patients had no celiac disease and none of the typical manifestations of APECED, including adrenal insufficiency, hypoparathyroidism and mucocutaneous candidiasis. All other autoantibodies tested negative in all patients.

Subgroup of Patients Tested for Nasal Cytology

Nasal samples were available from five patients. Although they all reported physician-diagnosed allergic rhinitis, eosinophils were almost absent in all subjects, only two out of five subjects had single cells visible unilaterally (**Table 5**). Further, neutrophils were detected in moderate amounts in only one patient, and goblet cells in another. Lymphocytes were not found in any samples.

DISCUSSION

We demonstrate high prevalence (11/104, 10.6%) of AI conditions in a large cohort of Finnish patients with CHH compared with the prevalence of 5.4% in general Finnish population (23). Autoimmunity, allergy, diarrhea, arthralgia, and asthma in our patients may reflect common pathways of immune dysregulation behind these symptoms.

With microarray technique, multiple autoantibodies have been demonstrated in all ($n = 16$) tested serum samples from patients with CHH (15). The absence of compatible symptoms may reflect the benign nature of these antibodies, consistent with reported presence of autoantibodies in healthy individuals (24). *RMRP* mutations may contribute to AI phenomena by various mechanisms, such as impaired T_H17 cell functions or altered expression of *AIRE*. Autoantibodies typically observed in APECED patients (IFN- ω , IL-17, IL-22, 21-OH) have not been included in our previous study. Here, we describe positivity for these antibodies in three of our patients, but the indices were close to the limit of positivity and the patients had no compatible clinical manifestations. Thus, the significance of these findings is uncertain.

The data on the $CD4+CD25^{high}CD127^{low}$ regulatory T cells measured in 11 patients from our cohort has previously been published (6). The numbers of regulatory T cells were normal in 10/11 patients, including two patients with autoimmunity (measured after the development of AIHA and juvenile idiopathic arthritis) and low in a single 67-year-old patient

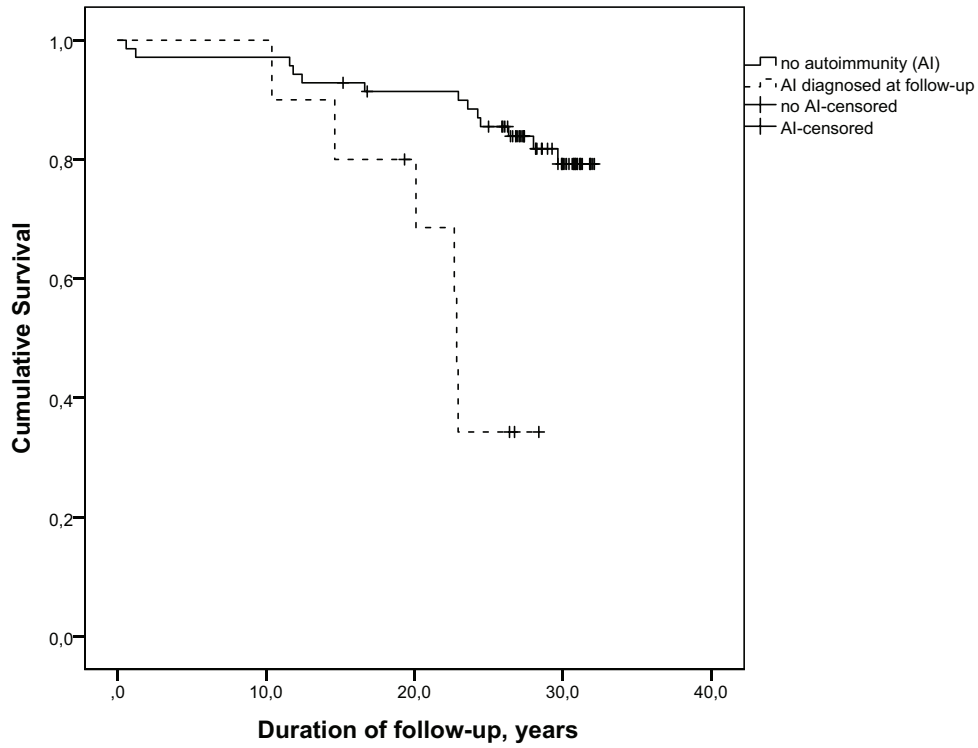


FIGURE 1 | Survival of patients with cartilage-hair hypoplasia differs significantly in subjects with and without autoimmune conditions, log rank $\chi^2_{(2)} = 14.056$, $p = 0.0002$.

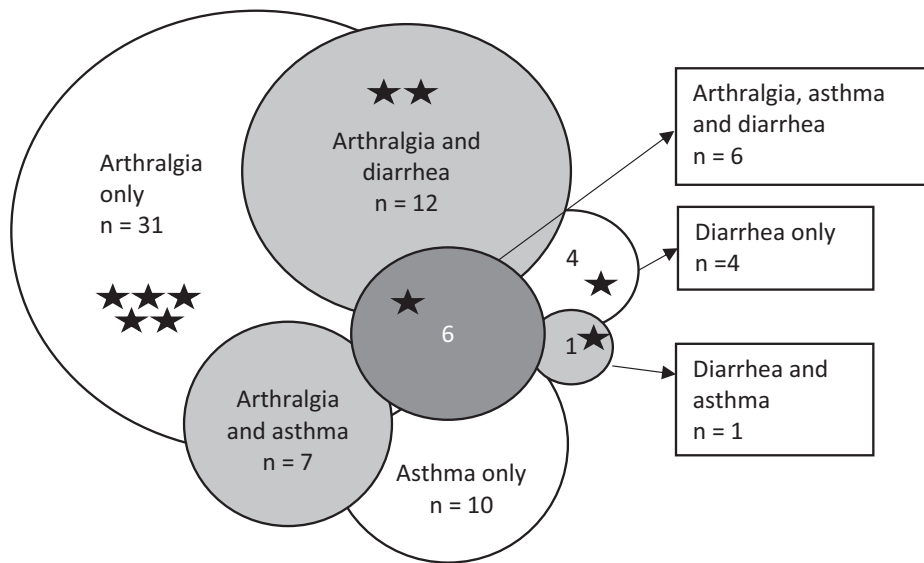


FIGURE 2 | Modified Venn diagram of arthralgia, asthma, persistent diarrhea and their combinations in 71 patients with cartilage-hair hypoplasia. *n*, number of patients. Stars indicate patients with autoimmune diseases.

without AI manifestations. However, functional abnormalities in regulatory T cells cannot be excluded and the role of CTLA-4 deficiency behind the immune dysregulation should be further explored.

Many of our study patients described gastrointestinal problems, most commonly recurrent and/or prolonged diarrhea. Eleven of our patients avoided lactose, which did not improve diarrhea. Endoscopy was not systematically performed in

TABLE 4 | Results of autoantibody measurements in 33 patients with cartilage-hair hypoplasia.

Pt No.	AI	Arthralgia	G/i	Pollen allergy	BA	DGP-IgA, U/ml	DGP-IgG, U/ml	tTG-IgA, U/ml	EMA-IgA, titer	IL-17, index	IL-22, index	IFN- ω , index	21-OH, index
1	-	+	-	+	+	<7	<7	<7	<5	211	-52	34	23
2	-	-	-	-	-	<7	14	<7	<5	-5	81	64	55
3	-	+	-	+	-	20	10	7	<5	-2	-9	62	-27
4	-	+	-	+	-	<7	<7	<7	<5	64	2	-50	-34
5	-	-	-	+	-	<7	<7	<7	<5	-49	-25	0	6
6	-	+	+	-	-	7	7	<7	<5	-37	30	13	40
7	-	+	+	+	-	<7	<7	<7	<5	-30	-70	111	11
8	-	+	+	+	-	<7	<7	<7	<5	31	101	155	35
9	-	+	+	+	-	<7	<7	<7	<5	-28	-7	49	-33
10	-	+	+	+	+	<7	<7	<7	<5	-53	84	49	47
11	-	+	+	-	-	<7	<7	<7	<5	-62	23	-39	-21
12	-	-	+	+	+	<7	<7	<7	<5	-40	90	136	67
13	-	+	-	+	+	<7	<7	<7	<5	-84	-95	-48	-30
14	-	+	-	+	-	<7	<7	<7	<5	-27	99	22	15
15	-	-	-	-	-	<7	<7	<7	<5	-10	-60	171	46
16	-	-	-	-	-	<7	<7	<7	<5	-32	39	29	11
17	-	+	-	+	-	<7	<7	<7	<5	-32	73	48	77
18	-	-	+	+	-	<7	<7	<7	<5	-62	-11	-46	7
19	-	+	-	+	+	<7	<7	<7	<5	-52	-110	-110	-4
20	-	+	+	-	-	9	<7	<7	<5	-42	-27	-86	-21
21	-	-	-	-	-	<7	<7	<7	<5	-26	15	-36	46
22	-	+	-	-	-	<7	<7	<7	<5	16	105	130	77
23	-	-	+	-	-	<7	<7	<7	<5	-59	50	79	54
24	-	-	-	+	-	<7	<7	<7	<5	-66	3	54	16
25	-	-	-	-	-	<7	<7	<7*	<5*	51	37	68	18
26	-	+	-	-	-	<7	<7	<7	<5	-38	-10	42	21
27	-	-	-	-	-	<7	<7	<7	<5	48	183	-194	-4
28	-	-	-	-	-	<7	<7	<7	<5	-98	-71	-71	-1
29	-	+	+	-	-	<7	<7	<7	<5	-69	-18	-45	4
30	-	-	+	+	+	<7	<7	<7	<5	-69	19	-202	-30
31	-	-	-	-	-	<7	<7	<7	<5	-8	66	206	38
32	-	-	+	+	-	<7	<7	<7	<5	-32	90	69	30
33	-	+	+	+	-	<7	<7	<7	<5	-51	-17	40	40

Numbers in bold represent elevated values. For reference values please see **Table 1**. *Because of immunoglobulin A deficiency diagnosed in this patient, tTG-IgG and EMA-IgG were measured, both were negative. 21-OH, 21-hydroxylase; AI, autoimmune disease; BA, bronchial asthma; DGP, deamidated gliadin peptide; EMA, endomysium; G/i, gastrointestinal symptoms; IFN, interferon; Ig, immunoglobulin; IL, interleukin; No, number; Pt, patient; tTG, tissue transglutaminase.

patients with CHH and thus AI enteropathy cannot be excluded. The presence of DVA in three subjects with negative celiac screen underscores the necessity for systematic endoscopic evaluation of CHH individuals with gastrointestinal complaints. Apart from celiac disease, DVA is frequent in patients with common variable immunodeficiency and numerous other disorders, and DVA etiology should always be identified and treated to prevent malnutrition and malignant transformation (25, 26).

Serum tissue transglutaminase (tTG) IgA was negative in all tested patients and tTG IgG was negative in a single patient with IgA deficiency. However, in our previous microarray study (15), five out of 16 patients tested positive for tTG IgG and two

of them reported diarrhea, therefore the possible link between tTG antibodies and gastrointestinal symptoms in patients with CHH deserves further studies. Isolated positive tTG IgG is uncommon in celiac disease, but can be present in other AI conditions, including inflammatory bowel disease (27). The discordance of positivity for tTG IgG in our current and previous study may be explained by higher sensitivity of microarray technique.

Asthma was more common in individuals with CHH who required hospitalization and/or surgery for sinopulmonary and/or ear infections. This may suggest asthma as a marker for a more severe immunodeficiency in CHH but may also reflect the retrospective nature of our study and the

TABLE 5 | Cytology of nasal cells from five subjects with cartilage-hair hypoplasia.

Symptoms	Subject 1		Subject 2		Subject 3		Subject 4		Subject 5	
	Pollen allergy, rhinoconjunctivitis		Pollen allergy		Pollen allergy, nasal congestion, shortness of breath and wheezing		Chronic nasal congestion, runny nose		Periodic nasal congestion	
	Right	Left	Right	Left	Right	Left	Right	Left	Right	Left
Nasal side	Right	Left	Right	Left	Right	Left	Right	Left	Right	Left
Lymphocytes	-	-	-	-	-	-	-	-	-	-
Eosinophils	-	(+)	-	-	-	-	(+)	-	-	-
Neutrophils	-	+	-	+	-	-	(+)	(+)	++	++
Goblet cells	++	++	(+)	(+)	-	-	-	-	(+)	(+)

Grading of eosinophilic cells (per microscopic view): -, 0 cells; +/-, 1-3 cells; +, 3-5 cells; ++, 20-30 cells; + + +, cells predominate. Grading of neutrophilic cells (per microscopic view): -, no cells; +, cells clearly visible; ++, moderate number of cells visible.

influence of age, with accumulation of infectious episodes and asthma diagnoses in older patients. Asthma was not associated with pollen allergy in this cohort, raising the question of possible misdiagnosis of one or both of these disorders in some patients. Asthma diagnosis is challenging in CHH due to the absence of height-age-adjusted reference values for spirometry.

Autoimmunity has been implied as a mechanism for lung disease in some patients with APECED and asthma-like symptoms, airway hyperresponsiveness and bronchiectasis (28, 29). We have previously demonstrated high prevalence of bronchiectasis in individuals with CHH, also in those without clinical signs of immunodeficiency (5). Thus, some patients with CHH designated to have asthma, may instead suffer from an underlying autoimmune lung disease and pulmonary problems in subjects with CHH require further investigations.

Four of the eleven patients with AI diseases died of pneumonia or end-stage lung disease. Although in three of them lung manifestations preceded the onset of autoimmunity, we suggest that patients with CHH and AI conditions should be carefully evaluated for pulmonary symptoms and consideration given for prophylactic antibiotics and/or immunoglobulin substitutions to prevent lung damage from recurrent infections.

In allergic rhinitis and asthma, eosinophils are recruited by pro-inflammatory cytokines and mediators and are the predominant cells in later phases of an allergic response (30, 31). The role of neutrophils in allergic inflammation is debated, but some studies report increasing numbers in nasal cytology in patients with allergic rhinitis (32-34). While all five tested subjects reported recurrent or chronic symptoms of allergic rhinitis and nasal samples were collected during the peak pollen season, none had increased numbers of eosinophilic, neutrophilic or lymphocytic nasal cells. This points to the presence of a chronic mucous inflammation, congruent with the systemic immune dysregulation, also supported by the fact that some patients with symptoms of pollen allergy tested negative for allergens.

In conclusion, we report here a high prevalence and a wide spectrum of AI diseases in a large cohort of patients with CHH. We report mild positivity for some

autoantibodies, not associated with clinical autoimmunity. The high prevalence of arthralgia, persistent diarrhea, asthma and symptoms of inflammation of nasal mucosa may indicate common pathways of immune dysregulation. Gastrointestinal, pulmonary and joint symptoms in subjects with CHH should be thoroughly evaluated to exclude underlying autoimmunity.

ETHICS STATEMENT

This study was carried out in accordance with the recommendations of Institutional Research Ethics Committee at Helsinki University Hospital, Finland, with written informed consent from all subjects. All subjects gave written informed consent in accordance with the Declaration of Helsinki. The protocol was approved by the Institutional Research Ethics Committee at Helsinki University Hospital, Finland.

AUTHOR CONTRIBUTIONS

OM, SV, and EH designed the study; SV analyzed the data and drafted the manuscript; RM performed nasal sampling; EH performed autoantibody analysis. All authors contributed to the manuscript writing and approved the final version.

FUNDING

The study was funded by the Sigrid Jusélius Foundation (OM), the Academy of Finland (OM), the Folkhälsan Research Foundation (OM), the Helsinki University Hospital Research Funds (HV, MT, and OM), the Swedish Childhood Cancer Foundation (OM), the Foundation for Pediatric Research (MT and OM), University of Helsinki and Helsinki University Hospital through the Doctoral Programme in Clinical Research (RM), The Jalmari and Rauha Ahokas Foundation (RM) and the Doctoral School in Health Sciences at the University of Helsinki (SV), The Regional Health Authorities of Western Norway and The Norwegian Research Council (EH).

REFERENCES

- Bonafé L, Dermitzakis ET, Unger S, Greenberg CR, Campos-Xavier BA, Zankl A, et al. Evolutionary comparison provides evidence for pathogenicity of RMRP mutations. *PLoS Genet.* (2005) 1:e47. doi: 10.1371/journal.pgen.0010047
- Bacchetta J, Ranchin B, Brunet AS, Bouvier R, Duquesne A, Edery P, et al. Autoimmune hypoparathyroidism in a 12-year-old girl with McKusick cartilage hair hypoplasia. *Pediatr Nephrol.* (2009) 24:2449–53. doi: 10.1007/s00467-009-1256-0
- Rider NL, Morton DH, Puffenberger E, Hendrickson CL, Robinson DL, Strauss KA. Immunologic and clinical features of 25 Amish patients with RMRP 70 A->G cartilage hair hypoplasia. *Clin Immunol.* (2009) 131:119–28. doi: 10.1016/j.clim.2008.11.001
- Bordon V, Gennery AR, Slatter MA, Vandecruys E, Laureys G, Veys P, et al. Clinical and immunologic outcome of patients with cartilage hair hypoplasia after hematopoietic stem cell transplantation. *Blood* (2010) 116:27–35. doi: 10.1182/blood-2010-01-259168
- Kostjukovits S, Klemetti P, Föhr A, Kajosaari M, Valta H, Taskinen M, et al. High prevalence of bronchiectasis in patients with cartilage-hair hypoplasia. *J Allergy Clin Immunol.* (2017) 139:375–8. doi: 10.1016/j.jaci.2016.07.023
- Kostjukovits S, Klemetti P, Valta H, Martelius T, Notarangelo LD, Seppänen M, et al. Analysis of clinical and immunologic phenotype in a large cohort of children and adults with cartilage-hair hypoplasia. *J Allergy Clin Immunol.* (2017) 140:612–4.e5. doi: 10.1016/j.jaci.2017.02.016
- Thiel CT, Mortier G, Kaitila I, Reis A, Rauch A. Type and level of RMRP functional impairment predicts phenotype in the cartilage hair hypoplasia-anaxuric dysplasia spectrum. *Am J Hum Genet.* (2007) 81:519–29. doi: 10.1086/521034
- de la Fuente MA, Recher M, Rider NL, Strauss KA, Morton DH, Adair M, et al. Reduced thymic output, cell cycle abnormalities, and increased apoptosis of T lymphocytes in patients with cartilage-hair hypoplasia. *J Allergy Clin Immunol.* (2011) 128:139–46. doi: 10.1016/j.jaci.2011.03.042
- Rogler LE, Kosmyna B, Moskowitz D, Bebaee R, Rahimzadeh J, Kutchko K, et al. Small RNAs derived from lncRNA RNase MRP have gene-silencing activity relevant to human cartilage-hair hypoplasia. *Hum Mol Genet.* (2014) 23:368–82. doi: 10.1093/hmg/ddt427
- Kostjukovits S, Degerman S, Pekkinen M, Klemetti P, Landfors M, Roos G, et al. Decreased telomere length in children with cartilage-hair hypoplasia. *J Med Genet.* (2016) 54:365–70. doi: 10.1136/jmedgenet-2016-104279
- Aubert G, Strauss KA, Lansdorp PM, Rider NL. Defects in lymphocyte telomere homeostasis contribute to cellular immune phenotype in cartilage-hair hypoplasia. *J Allergy Clin Immunol.* (2017) 140:1120–9.e1. doi: 10.1016/j.jaci.2016.11.051
- Poliani PL, Facchetti F, Ravanini M, Gennery AR, Villa A, Roifman CM, et al. Early defects in human T-cell development severely affect distribution and maturation of thymic stromal cells: possible implications for the pathophysiology of Omenn syndrome. *Blood* (2009) 114:105–8. doi: 10.1182/blood-2009-03-211029
- Meyer S, Woodward M, Hertel C, Vlaicu P, Haque Y, Kärner J, et al. AIRE-deficient patients harbor unique high-affinity disease-ameliorating autoantibodies. *Cell* (2016) 166:582–95. doi: 10.1016/j.cell.2016.06.024
- Husebye ES, Anderson MS, Kämpe O. Autoimmune polyendocrine syndromes. *N Engl J Med.* (2018) 378:1132–41. doi: 10.1056/NEJMr1713301
- Biggs CM, Kostjukovits S, Dobbs K, Laakso S, Klemetti P, Valta H, et al. Diverse autoantibody reactivity in cartilage-hair hypoplasia. *J Clin Immunol.* (2017) 37:508–10. doi: 10.1007/s10875-017-0408-4
- Oftedal BE, Kämpe O, Meager A, Ahlgren KM, Lobell A, Husebye ES, et al. Measuring autoantibodies against IL-17F and IL-22 in autoimmune polyendocrine syndrome type I by radioligand binding assay using fusion proteins. *Scand J Immunol.* (2011) 74:327–33. doi: 10.1111/j.1365-3083.2011.02573.x
- Oftedal BE, Wolff AS, Bratland E, Kämpe O, Perheentupa J, Myhre AG, et al. Radioimmunoassay for autoantibodies against interferon omega; its use in the diagnosis of autoimmune polyendocrine syndrome type I. *Clin Immunol.* (2008) 129:163–9. doi: 10.1016/j.clim.2008.07.002
- Falorni A, Bini V, Betterle C, Brozzetti A, Castaño L, Fichna M, et al. Determination of 21-hydroxylase autoantibodies: inter-laboratory concordance in the Euradrenal International Serum Exchange Program. *Clin Chem Lab Med.* (2015) 53:1761–70. doi: 10.1515/cclm-2014-1106
- Liang Y, Sarkar MK, Tsoi LC, Gudjonsson JE. Psoriasis: a mixed autoimmune and autoinflammatory disease. *Curr Opin Immunol.* (2017) 49:1–8. doi: 10.1016/j.coi.2017.07.007
- Imbach P. Development and research in idiopathic thrombocytopenic purpura: an inflammatory and autoimmune disorder. *Pediatr Blood Cancer.* (2006) 47(Suppl. 5):685–6. doi: 10.1002/pbc.20969
- Partinen M, Kornum BR, Plazzi G, Jennum P, Julkunen I, Vaarala O. Narcolepsy as an autoimmune disease: the role of H1N1 infection and vaccination. *Lancet Neurol.* (2014) 13:600–13. doi: 10.1016/S1474-4422(14)70075-4
- Nowacek DG, Teener JW. Multifocal motor neuropathy. *Semin Neurol.* (2012) 32:500–5. doi: 10.1055/s-0033-1334468
- Raevuori A, Haukka J, Vaarala O, Suvisaari JM, Gissler M, Grainger M, et al. The increased risk for autoimmune diseases in patients with eating disorders. *PLoS ONE* (2014) 9:e104845. doi: 10.1371/journal.pone.0104845
- Ludwig RJ, Vanhoorelbeke K, Leyboldt F, Kaya Z, Bieber K, McLachlan SM, et al. Mechanisms of autoantibody-induced pathology. *Front Immunol.* (2017) 8:603. doi: 10.3389/fimmu.2017.00603
- Khodadad A, Aghamohammadi A, Parvaneh N, Rezaei N, Mahjoob F, Bashashati M, et al. Gastrointestinal manifestations in patients with common variable immunodeficiency. *Dig Dis Sci.* (2007) 52:2977–83. doi: 10.1007/s10620-006-9736-6
- Pallav K, Leffler DA, Tariq S, Kabbani T, Hansen J, Peer A, et al. Noncoeliac enteropathy: the differential diagnosis of villous atrophy in contemporary clinical practice. *Aliment Pharmacol Ther.* (2012) 35:380–90. doi: 10.1111/j.1365-2036.2011.04938.x
- Shor DB, Orbach H, Boaz M, Altman A, Anaya JM, Bizzaro N, et al. Gastrointestinal-associated autoantibodies in different autoimmune diseases. *Am J Clin Exp Immunol.* (2012) 1:49–55.
- Alimohammadi M, Dubois N, Sköldberg F, Hallgren A, Tardivel I, Hedstrand H, et al. Pulmonary autoimmunity as a feature of autoimmune polyendocrine syndrome type 1 and identification of KCNRG as a bronchial autoantigen. *Proc Natl Acad Sci USA.* (2009) 106:4396–401. doi: 10.1073/pnas.0809986106
- Shum AK, Alimohammadi M, Tan CL, Cheng MH, Metzger TC, Law CS, et al. BPIFB1 is a lung-specific autoantigen associated with interstitial lung disease. *Sci Transl Med.* (2013) 5:206ra139. doi: 10.1126/scitranslmed.3006998
- Gelfand EW. Inflammatory mediators in allergic rhinitis. *J Allergy Clin Immunol.* (2004) 114:S135–8. doi: 10.1016/j.jaci.2004.08.043
- Naclerio RM, Bachert C, Baraniuk JN. Pathophysiology of nasal congestion. *Int J Gen Med.* (2010) 3:47–57. doi: 10.2147/IJGM.S8088
- Gelardi M, Iannuzzi L, Quaranta N, Landi M, Passalacqua G. NASAL cytology: practical aspects and clinical relevance. *Clin Exp Allergy* (2016) 46:785–92. doi: 10.1111/cea.12730
- Canakcioglu S, Tahamiler R, Saritzali G, Alimoglu Y, Isildak H, Guvenc MG, et al. Evaluation of nasal cytology in subjects with chronic rhinitis: a 7-year study. *Am J Otolaryngol.* (2009) 30:312–7. doi: 10.1016/j.amjoto.2008.06.015
- Chen J, Zhou Y, Zhang L, Wang Y, Pepper AN, Cho SH, et al. Individualized treatment of allergic rhinitis according to nasal cytology. *Allergy Asthma Immunol Res.* (2017) 9:403–9. doi: 10.4168/aa.2017.9.5.403

Conflict of Interest Statement: The authors declare that the research was conducted in the absence of any commercial or financial relationships that could be construed as a potential conflict of interest.

Copyright © 2018 Vakkilainen, Mäkitie, Klemetti, Valta, Taskinen, Husebye and Mäkitie. This is an open-access article distributed under the terms of the Creative Commons Attribution License (CC BY). The use, distribution or reproduction in other forums is permitted, provided the original author(s) and the copyright owner(s) are credited and that the original publication in this journal is cited, in accordance with accepted academic practice. No use, distribution or reproduction is permitted which does not comply with these terms.