



# The Changing Landscape of Naive T Cell Receptor Repertoire With Human Aging

Evgeny S. Egorov<sup>1†</sup>, Sofya A. Kasatskaya<sup>1,2†</sup>, Vasily N. Zubov<sup>1</sup>, Mark Izraelson<sup>1</sup>, Tatiana O. Nakonechnaya<sup>1</sup>, Dmitriy B. Staroverov<sup>1</sup>, Andrea Angius<sup>3</sup>, Francesco Cucca<sup>3</sup>, Ilgar Z. Mamedov<sup>1</sup>, Elisa Rosati<sup>4</sup>, Andre Franke<sup>4</sup>, Mikhail Shugay<sup>1,2</sup>, Mikhail V. Pogorelyy<sup>1</sup>, Dmitriy M. Chudakov<sup>1,2\*</sup> and Olga V. Britanova<sup>1</sup>

<sup>1</sup>Shemyakin and Ovchinnikov Institute of Bioorganic Chemistry, Moscow, Russia, <sup>2</sup>Center of Life Sciences, Skolkovo Institute of Science and Technology, Moscow, Russia, <sup>3</sup>Istituto di Ricerca Genetica e Biomedica, Consiglio Nazionale delle Ricerche, Monserrato, Italy, <sup>4</sup>Institute of Clinical Molecular Biology, Kiel University, Kiel, Germany

## OPEN ACCESS

### Edited by:

Benny Chain,  
University College London,  
United Kingdom

### Reviewed by:

Sian M. Henson,  
Queen Mary University of London,  
United Kingdom

Encarnita Mariotti-Ferrandiz,  
Université Pierre et Marie  
Curie, France

### \*Correspondence:

Dmitriy M. Chudakov  
chudakovdm@mail.ru

<sup>†</sup>These authors have contributed  
equally to this work.

### Specialty section:

This article was submitted  
to T Cell Biology,  
a section of the journal  
Frontiers in Immunology

**Received:** 27 April 2018

**Accepted:** 29 June 2018

**Published:** 24 July 2018

### Citation:

Egorov ES, Kasatskaya SA,  
Zubov VN, Izraelson M,  
Nakonechnaya TO, Staroverov DB,  
Angius A, Cucca F, Mamedov IZ,  
Rosati E, Franke A, Shugay M,  
Pogorelyy MV, Chudakov DM and  
Britanova OV (2018) The Changing  
Landscape of Naive  
T Cell Receptor Repertoire With  
Human Aging.  
*Front. Immunol.* 9:1618.  
doi: 10.3389/fimmu.2018.01618

Human aging is associated with a profound loss of thymus productivity, yet naïve T lymphocytes still maintain their numbers by division in the periphery for many years. The extent of such proliferation may depend on the cytokine environment, including IL-7 and T-cell receptor (TCR) “tonic” signaling mediated by self pMHCs recognition. Additionally, intrinsic properties of distinct subpopulations of naïve T cells could influence the overall dynamics of aging-related changes within the naïve T cell compartment. Here, we investigated the differences in the architecture of TCR beta repertoires for naïve CD4, naïve CD8, naïve CD4<sup>+</sup>CD25<sup>-</sup>CD31<sup>+</sup> (enriched with recent thymic emigrants, RTE), and mature naïve CD4<sup>+</sup>CD25<sup>-</sup>CD31<sup>-</sup> peripheral blood subsets between young and middle-age/old healthy individuals. In addition to observing the accumulation of clonal expansions (as was shown previously), we reveal several notable changes in the characteristics of T cell repertoire. We observed significant decrease of CDR3 length, NDN insert, and number of non-template added N nucleotides within TCR beta CDR3 with aging, together with a prominent change of physicochemical properties of the central part of CDR3 loop. These changes were similar across CD4, CD8, RTE-enriched, and mature CD4 subsets of naïve T cells, with minimal or no difference observed between the latter two subsets for individuals of the same age group. We also observed an increase in “publicity” (fraction of shared clonotypes) of CD4, but not CD8 naïve T cell repertoires. We propose several explanations for these phenomena built upon previous studies of naïve T-cell homeostasis, and call for further studies of the mechanisms causing the observed changes and of consequences of these changes in respect of the possible holes formed in the landscape of naïve T cell TCR repertoire.

**Keywords:** aging, T cell receptor, naive T cells, immunosequencing, Rep-Seq, CDR3 repertoire

## INTRODUCTION

A diverse set of naïve T cell functions (1) and their antigenic receptors—T-cell receptors (TCRs) (2, 3)—protects us from a multitude of infectious and cancer hazards encountered throughout our lifespan. Furthermore, it essentially provides selection of the appropriate amplitude, type, localization, and duration of immune response. Human aging is associated with profound changes in T cell

immunity (2–5), compromising our ability to withstand novel pathogens and manage chronic infections. It also dampens the effect of vaccination (6–8) and can lead to higher cancer susceptibility (9–12). These changes may further result in an imbalanced immune response that can develop into non-specific inflammation, provoking neurodegenerative and cardiovascular disorders, and to the loss of tolerance, leading to autoimmunity (3, 13–15). For the latter, a reduction of regulatory T cell (Treg) diversity (16, 17) could be a one of the causative factors.

With aging, accumulating clonal expansions of memory T cells caused by previously encountered antigens gradually begin to dominate in the available T-cell pool. This leads to a homeostasis characterized by a decreased number of naïve T cells, essentially shrinking the precious reservoir of diverse functions and antigenic specificities (2, 18–23). At the same time, thymus function progressively declines after puberty (24, 25), and drops sharply to a very low level after 40 years of age (4, 26). Along with diminished production of T cell progenitors by the bone marrow (27), this leads to a drop in generation of the so-called recent thymic emigrants (RTE)—the not fully mature (28, 29) form of naïve T cells, and thus in the replenishment of the mature naïve T cell pool (5, 26, 30).

The existing naïve T cells may still support their abundance and diversity for a prolonged period. In humans, both mature naïve T cells and—to a lesser extent—RTE-enriched CD45RA<sup>+</sup>CD31<sup>+</sup> subset of CD4 T cells (30)—keep ability to proliferate on the periphery (31, 32). However, the number of allowed divisions is not unlimited. Prominent shortening of telomeres is observed in both CD31<sup>+</sup> and CD31<sup>-</sup> subsets (30) which eventually leads to a gradual, later avalanche, exhaustion of proliferation capacity and depletion of the naïve T cell pool (20, 33). Additionally, prolonged peripheral proliferation could also be associated with the functional deficiency of naïve T cells that fail to differentiate toward memory phenotype upon a specific antigenic challenge (3), although a recent cytokine profile study suggests that naïve T cells derived from elderly individuals retain their functionality and naiveté (26).

How uniform is the naïve T cell proliferation on the periphery remains questionable. Qi et al. demonstrated that both CD4 and CD8 naïve T cells gated as CCR7<sup>+</sup>CD45RA<sup>high</sup>CD28<sup>+</sup> gain clonal expansions by the age of 70–85 years (34). This observation suggests that some of the naïve T cell clones are dividing more prominently than others. Furthermore, the most rapidly dividing ones could exhaust and extinguish more rapidly, while those dividing with a moderate rate could form the observed clonal expansions.

Importantly, the peripheral T cell proliferation may be dependent on the so-called “tonic signaling”—recognition of MHC complexes loaded with self antigens while surveying the peripheral lymphoid organs. Such contacts are transient and do not lead to classic T cell activation, but generate sub-threshold signals required for naïve T cell survival and proliferation (35–38).

The desirable (i.e., required to efficiently recognize foreign antigens within MHC) and allowed (i.e., not leading to self-recognition and autoimmunity) TCR affinity to self peptide–MHC complexes is set in the course of positive and negative thymic selection, respectively. The threshold range of such selection is not that narrow, thus naïve T cells that leave the thymus—initially

as RTE—have a relatively wide range of self-reactivity. The produced pool of naïve T cells is, therefore, subjected to varying degrees of tonic TCR signaling (38). Therefore, peripheral proliferation of naïve T cells could be potentially biased toward preferential exhaustion of naïve T cell clones carrying TCRs with the highest affinity to MHC. Furthermore, naïve T cells bearing high affinity TCRs could also serve as a preferential source of antigen-responding clones (37) thus being the first one to transit from the naïve T cell pool.

Another factor that could contribute to the dynamics of naïve TCR repertoire landscape is the fate of the specific population of T cells produced in fetal period. We have earlier demonstrated that this subset may survive for decades and contribute to adult TCR repertoire (39). Their TCRs are characterized by a low number of nucleotides that are randomly added by TdT enzyme in the course of VDJ recombination (40, 41). Furthermore, these cells originate from a distinct population of hematopoietic stem cells and are characterized with generally higher proliferation potential (42). However, their fate among other naïve T cells in the elder age remains unexplored.

Altogether, there are number of factors that could shape the landscape of naïve T cell TCR repertoire with aging. To shed light on the nature of ongoing changes, we have focused on the comparative analysis of intrinsic characteristics of the TCR repertoires for the bulk naïve CD8<sup>+</sup>, bulk naïve CD4<sup>+</sup>, naïve RTE-enriched CD31<sup>+</sup>CD4<sup>+</sup>, and naïve non-RTE CD4<sup>+</sup> T cells derived from the peripheral blood of young versus elderly healthy donors, demonstrating that

- 1) Characteristics of TCR beta CDR3 repertoires change in both CD4 and CD8, both RTE-enriched and mature naïve CD4 T cell subsets with age.
- 2) Within the same age group, no significant difference is observed in characteristics of TCR repertoire between RTE-enriched and mature naïve CD4 T cell subsets.
- 3) TRBV and TRBJ gene segment usage also changes prominently and similarly both within RTE-enriched and mature naïve CD4 T cell subsets of different individuals.
- 4) Relative “publicity” (i.e., sharing between individuals) of TCR repertoires grows both within RTE-enriched and mature naïve CD4 T cell subsets with age.

The observed changes suggest functional differences of young versus middle-age/old naïve T cell TCR repertoires with respect of potential range and characteristics of recognized antigens.

## MATERIALS AND METHODS

### Donors and Cell Sorting

The study was approved by the local ethics committee and conducted in accordance with the Declaration of Helsinki. All donors were informed of the final use of their blood and signed an informed consent document. The cohort included 18 healthy individuals aged 25–88 years. Individuals with previously diagnosed cancer or autoimmune disease were excluded. Peripheral blood (10–20 ml) was collected into a number of EDTA-treated Vacutainer tubes (BD Biosciences, Franklin Lakes,

NJ, USA), PBMCs extracted using Ficoll-Paque (Paneco, Kirov, Russia) density gradient centrifugation with SepMate™ tubes (STEMCELL Technologies, Vancouver, BC, Canada), and stained according to manufacturer's recommendations. Following antibodies were used: CD3-eFluor450 (eBioscience, clone UCHT1), CD45RA-FITC (eBioscience, clone JS-83), CD27-PC5 (Beckman Coulter, clone O323), CD4-PE (Beckman Coulter, clone 13B8.2), CD25-eFluor450 (eBiosciences, clone BC96), and CD31-PC7 (eBiosciences, clone WM59). T cells of interest were sorted using FACS Aria III (BD Biosciences, Franklin Lakes, NJ, USA), directly in 350 µl of RLT buffer (Qiagen) per 100,000 sorted cells. Total RNA was further isolated using RNeasy Micro kit (Qiagen) and completely used for TCR library preparation. 5'-RACE TCR beta cDNA libraries were prepared according to the previously described protocol (43, 44). See also: <https://github.com/repseqio/protocols/blob/master/Human%20TCR%20alpha%20and%20beta%20RNA-based%20RACE%20protocol.md>.

Libraries were sequenced with Illumina HiSeq 2000/2500, paired-end 150 + 150 nucleotides.

## TCR Beta Repertoires Profiling and Data Analysis

T-cell receptor beta CDR3 repertoires were extracted using MiXCR software (45), version v2.1.5. Decontamination from memory T cell TCR beta clonotypes and comparative post-analysis were performed using VDJtools software v1.1.7 (46).

Resulting decontaminated TCR beta CDR3 repertoires are available from Figshare:

[https://figshare.com/articles/Naive\\_CD4\\_CD8\\_subsets/6548921](https://figshare.com/articles/Naive_CD4_CD8_subsets/6548921);  
[https://figshare.com/articles/naive\\_RTE\\_and\\_non-RTE\\_CD4\\_T\\_cells\\_subsets/6549059](https://figshare.com/articles/naive_RTE_and_non-RTE_CD4_T_cells_subsets/6549059).

The obtained repertoires were further filtered to eliminate out-of-frame and stop codon-containing TCR beta CDR3 variants. Averaged physicochemical properties of amino acid residues in the middle portion (5 amino acid residues) of TCR beta CDR3 were calculated using VDJtools, the following metrics were used: strength (47, 48), hydrophathy, polarity, and volume (values available from: [http://www.imgt.org/IMGTeducation/Aide-memoire/\\_UK/aminoacids/IMGTclasses.html](http://www.imgt.org/IMGTeducation/Aide-memoire/_UK/aminoacids/IMGTclasses.html)). During calculation, property values were weighted by the frequency of corresponding clonotypes, so the results favor more frequent clonotypes and do not depend on the sequencing/sampling depth (49). See **Table 1** for the values used for each amino acid property. See **Tables 2** and **3** for the counts of sorted T cells, the number of CDR3 containing sequencing reads, and the number of unique TCR beta CDR3 clonotypes in each sample.

## Statistical Analysis

For comparison of repertoire properties, one-sided *t*-test with unequal variances (Welch's test) was used. Normality of the distribution of sample means was confirmed by performing Shapiro–Wilk tests, and the decision to reject the null hypothesis was made after adjusting for multiple hypothesis testing as in Benjamini–Hochberg. False discovery rate in normality testing was controlled at a level of 0.05 by setting *p*-adjusted upper bound

**TABLE 1** | Values used for CDR3 amino acid properties calculation by VDJtools.

Amino acid	Hydrophathy	Polarity	Volume	Strength
A	1.8	0	67	0
C	2.5	0	86	1
D	-3.5	1	91	0
E	-3.5	1	109	0
F	2.8	0	135	1
G	-0.4	0	48	0
H	-3.2	1	118	0
I	4.5	0	124	1
K	-3.9	1	135	0
L	3.8	0	124	1
M	1.9	0	124	1
N	-3.5	1	96	0
P	-1.6	0	90	0
Q	-3.5	1	114	0
R	-4.5	1	148	0
S	-0.8	1	73	0
T	-0.7	1	93	0
V	4.2	0	105	1
W	-0.9	0	163	1
Y	-1.3	1	141	1

at 0.05. Z-score normalization was performed by subtracting the mean value for each TRBV gene segment values and dividing by the SD. Only highly represented TRBV gene segments TRBV9, TRBV7–9, TRBV7–2, TRBV6–5, TRBV29–1, TRBV20–1, and TRBV12–3/12-4, each associated with at least 2% of CDR3 clonotypes in each sample, were taken into analysis.

## RESULTS

### TCR Repertoires of Both CD4 and CD8 Naïve T Cells Change Properties With Aging

To analyze how the properties of naïve TCR repertoire change with age, we first sorted CD3<sup>+</sup>CD4<sup>+</sup>CD27<sup>high</sup>CD45RA<sup>high</sup> and CD3<sup>+</sup>CD4<sup>+</sup>CD27<sup>high</sup>CD45RA<sup>high</sup> T cell subsets gated as shown on **Figure 1** from peripheral blood samples of 4 young (25–35 years old) and 7 middle-age/old (51–88 years old) healthy donors (**Table 2**). TCR beta profiling was performed as described in Ref. (43), extraction of CDR3 repertoires was performed using MiXCR (45). To exclude possible contaminations from memory T cell pool that could occur during cell sorting, we also performed TCR beta repertoires profiling for memory T cells sorted from the same donors (**Figure 1**). Naïve TCR beta repertoires were further decontaminated from the clonotypes present in memory subsets using VDJtools “Decontaminate” module with default parameters (20:1 parent-to-child clonotype frequency ratio for contamination filtering). This procedure eliminated from 0.005 to 0.5% of reads and from 0.01 to 0.7% of clonotypes, these numbers did not depend on the donor age group. Despite the low proportion of eliminated reads and clonotypes, such procedure is desirable for accuracy of the whole analysis and general control for cell contamination during sorting.

We complemented our data with multiplex PCR RNA-based TCR profiling data from Ref. (34) for 4 young (20–35 years) and 5 old (70–85 years) healthy donors naïve T cells gated as CD4<sup>+</sup>

**TABLE 2** | CD4 and CD8 naïve and memory cell sorting.

Donor	Age	Group	Subset	Replica	Number of sorted cells	Number of CDR3 reads	Number of CDR3 clonotypes
Donor 1	25	Young	CD4	1	500,000	528,824	38,614
				2	500,000	475,392	240,80
			CD8	1	500,000	564,227	26,988
				2	500,000	648,821	19,338
Donor 2	26		CD4	1	135,000	1,069,588	45,098
			CD8	1	251,000	633,854	28,967
Donor 3	35		CD4	1	200,500	380,253	43,526
				2	231,000	223,661	23,038
			CD8	1	350,500	533,091	47,626
Donor 4	32		CD4	1	560,000	17,494,455	165,184
				2	488,000	12,525,047	113,333
				3	395,000	6,077,772	54,546
				4	100,000	4,353,149	24,582
			CD8	1	510,000	9,219,066	101,096
				2	316,000	10,594,890	61,022
Donor 5	51	Old	CD4	1	495,000	13,765,788	183,873
				2	425,000	5,146,822	64,134
				3	437,000	3,832,144	84,458
				4	255,000	4,773,131	90,459
			CD8	1	509,000	7,369,930	125,339
				2	200,000	2,689,594	64,907
				3	343,000	517,265	20,870
				4	120,000	1,945,472	32,259
Donor 6	88		CD4	1	500,000	779,559	65,515
			CD8	1	60,000	142,639	9,991
Donor 7	51		CD4	1	100,000	28,129	5,033
				2	100,000	37,556	5,455
				3	100,000	41,380	6,762
			CD8	1	105,000	51,463	7,434
Donor 8	82		CD4	1	100,000	46,472	8,318
				2	90,000	38,109	6,694
			CD8	1	12,000	6,013	846
Donor 9	55		CD4	1	100,000	82,691	7,768
				2	100,000	27,215	4,740
			CD8	1	100,000	51,742	5,290
				2	100,000	84,532	7,666
Donor 10	77		CD4	1	254,000	677,587	24,652
				2	227,000	963,394	20,087
			CD8	1	50,000	942,430	15,033
				2	105,000	553,867	19,180
					105,000	553,867	19,180
Donor 11	53		CD4	1	153,000	401,550	11,668
	53		CD8	1	101,000	242,248	6,857

Donors, replicas, sorted cell counts, and number of extracted T-cell receptor beta CDR3 clonotypes are shown.

CCR7<sup>+</sup>CD45RA<sup>high</sup>CD28<sup>+</sup> and CD8<sup>+</sup>CCR7<sup>+</sup>CD45RA<sup>high</sup>CD28<sup>+</sup>. Repertoire extraction was performed using the same MiXCR version starting from raw data (dbGaP, www.ncbi.nlm.nih.gov/gap, accession no. phs000787.v1.p1). Similarly, we used memory subsets from the same donors in order to decontaminate naïve T cell repertoires from possible contaminations during cell sorting using VDJtools.

Analysis of the normalized Shannon–Wiener diversity index for the joint data confirmed the conclusion by Qi and coauthors

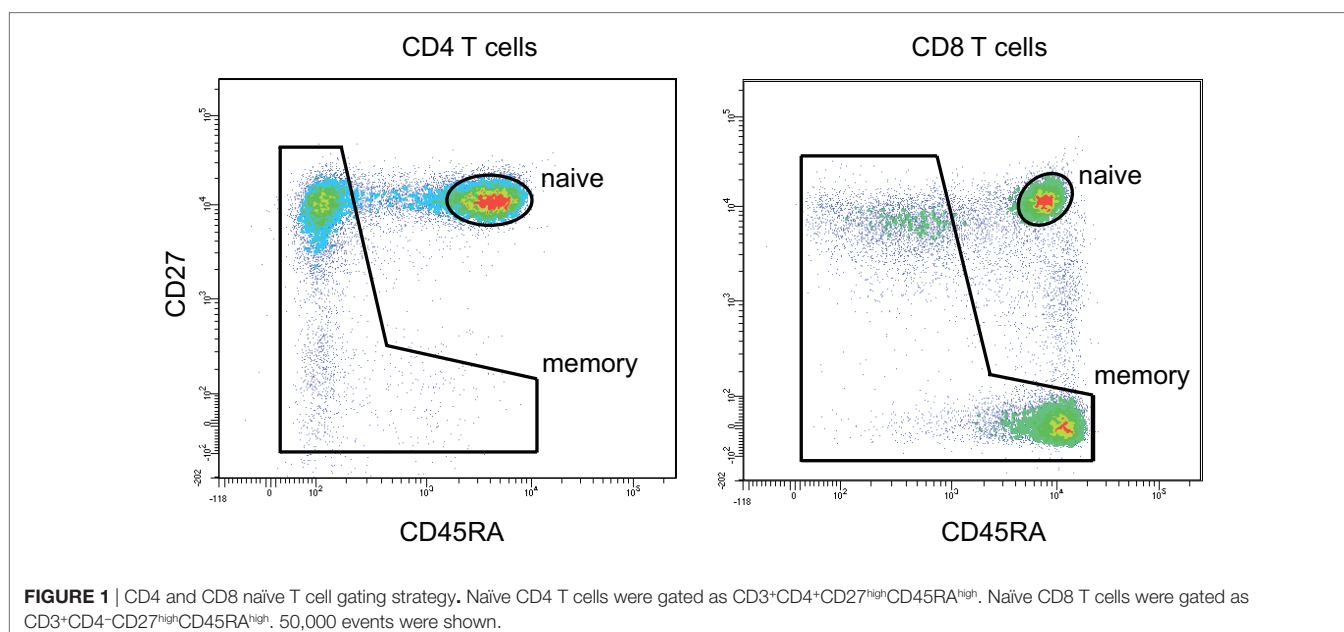
that both CD4 and CD8 naïve T cells accumulate clonal expansion with aging (**Figure 2A**). The accuracy of the results for young individuals generally confirmed the validity of combining the data from both experiments, in spite of the fact that different gating was used for the naïve T cell sorting in the two studies.

Multiplex PCR employed in Qi et al. (34) may cause quantitative biases due to the differing efficiency of primers used to amplify different TRBV segments (50, 51). However, such source of bias does not influence the relative frequency of

**TABLE 3** | Recent thymic emigrants (RTEs)-enriched and mature naïve CD4 T cell sorting.

Donor	Age	Group	Subset	Replica	Number of sorted cells	Number of CDR3 reads	Number of CDR3 clonotypes
Donor 12	29	Young	RTE	1	50,000	251,199	27,208
			non-RTE	1	50,000	939,999	33,389
Donor 13	28		RTE	1	100,000	282,998	27,895
			non-RTE	1	100,000	620,320	34,092
Donor 14	31		RTE	1	50,000	144,571	30,139
			non-RTE	1	50,000	622,585	29,253
Donor 15	30		RTE	1	69,000	309,070	33,233
			non-RTE	1	100,000	2,844,397	63,900
Donor 7	51	Old	RTE	1	100,000	14,572	5,306
			non-RTE	1	105,000	17,926	4,030
Donor 8	82		RTE	1	38,000	16,033	2,835
			non-RTE	1	100,000	29,970	6,244
Donor 9	55		RTE	1	89,000	19,622	3,664
			non-RTE	1	189,000	20,891	5,290

Donors, replicas, sorted cell counts, and number of extracted T-cell receptor beta CDR3 clonotypes are shown.



clonotypes within a particular TRBV segment. Therefore, in order to properly join our 5'RACE and multiplex PCR data from Qi et al., we performed further analysis separately for each of the TRBV gene segments that were abundantly represented in the data.

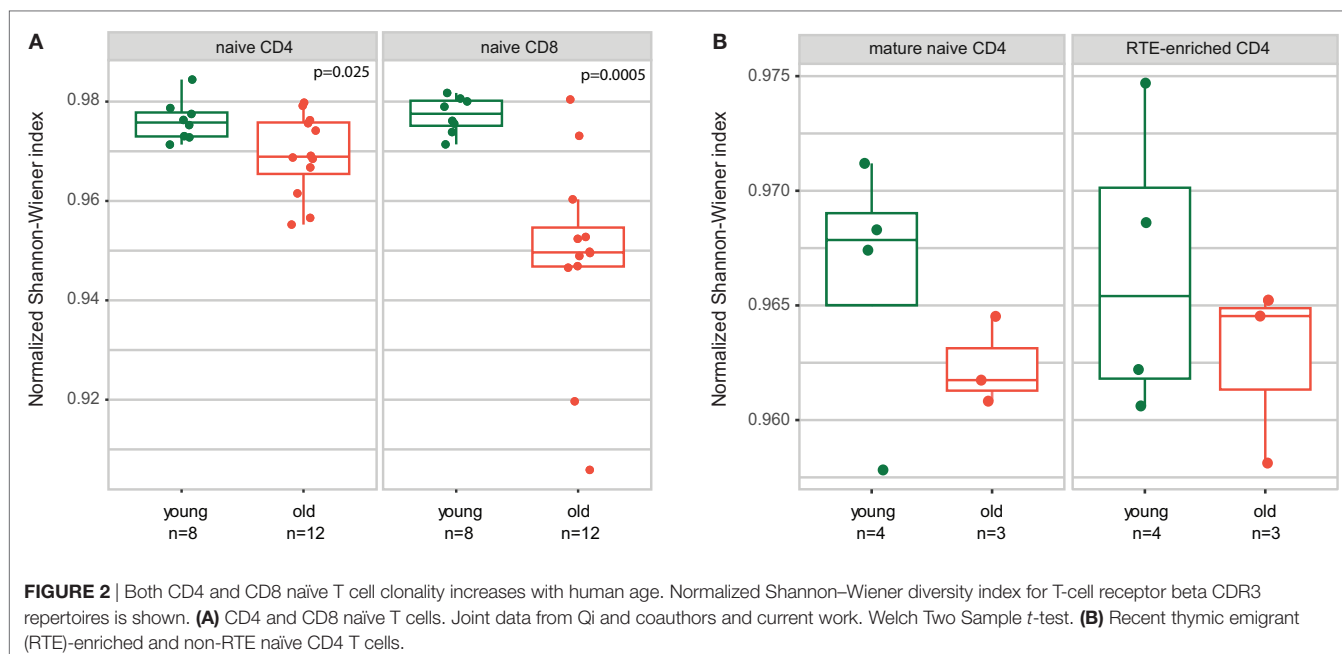
Notably, this approach has two additional benefits. First, different TRBV genes carry distinct CDR1 and CDR2 regions that participate in TCR–pMHC interaction, and, therefore, could differently influence the averaged properties of CDR3 that we analyze below. Separate analysis of TRBV segments allows to neutralize this bias. Second, distinct TRBV genes correspond to distinct T cell subpopulations allowing for independent evaluation of their properties, that provides better statistics for limited donor cohorts. All analyses were

performed “weighted”—per CDR3-covering sequencing read, i.e., accounting for the relative frequency of each clonotype, with Z-score normalization used to combine information from different TRBV segments.

The results of comparative analysis of TRB CDR3 repertoire properties with VDJtools software are shown on **Figure 3**. Notably, dispersion of all parameters grows prominently with age, which already reflects the non-uniform proliferation of naïve T cells with age.

CDR3 length, size of NDN insert, and number of randomly added N nucleotides significantly decrease with age both for CD4 and CD8 naïve T cells (**Figure 3A**). Average characteristics of amino acid residues in the middle of CDR3 also change prominently for CD4 naïve T cells (**Figure 3B**).





## Both RTE and Mature Naïve CD4 T Cells Change Their Properties With Aging

To some extent, both CD45RA<sup>+</sup>CD31<sup>-</sup> mature naïve CD4<sup>+</sup> T cells and RTE-enriched CD45RA<sup>+</sup>CD31<sup>+</sup> subsets may support their counts by peripheral division: “CD45RA<sup>+</sup>CD31<sup>+</sup>CD4<sup>+</sup> subset also undergoes some *in vivo* proliferation without immediate loss of CD31, resulting in an accumulation of CD45RA<sup>+</sup>CD31<sup>+</sup> proliferative offspring” (30). Nevertheless, counts of CD45RA<sup>+</sup>CD31<sup>+</sup> naïve CD4<sup>+</sup> T cell notably decrease with time (5, 30). The CD31<sup>-</sup> subset is believed to proliferate and support their counts more efficiently than CD31<sup>+</sup>, although the extent of telomere shortening with aging is prominent and comparable for both subsets (30).

Therefore, one could suggest that characteristics of mature naïve CD4<sup>+</sup>CD31<sup>-</sup> T cells could change more prominently than those of RTE-enriched CD4<sup>+</sup>CD31<sup>+</sup> T cell pool. The properties of total naïve CD4<sup>+</sup> T cells could change with aging because of the intrinsic differences between the properties of RTE-enriched and mature naïve CD4 T cell TCR repertoires, and decrease of CD31<sup>+</sup> cell proportion of all naïve CD4 T cells (5).

To verify the latter hypothesis, we compared TCR beta repertoire characteristics for the sorted CD4<sup>+</sup>CD45RA<sup>high</sup>CD27<sup>high</sup>CD31<sup>+</sup> and CD4<sup>+</sup>CD45RA<sup>high</sup>CD27<sup>high</sup>CD31<sup>-</sup> T cells of 4 young (29–31 years) and 3 elder (aged 51, 55, and 82 years) healthy donors (Table 3). Importantly, to exclude the potential influence of naïve Tregs which characteristics essentially differ from conventional CD4 T cells, here we gated out the CD25<sup>+</sup> cells from all subsets (Figure 4). It should be noted that this strict gating could also cutoff the CD25<sup>dull</sup> subset of naïve CD4 T cells that was recently reported to accumulate with aging (52), however, these cells were nearly absent (represented less than 2% of naïve CD4 T cells) in our donors.

Analysis of obtained TCR beta CDR3 repertoires revealed that characteristics of CD4<sup>+</sup>CD45RA<sup>high</sup>CD27<sup>high</sup>CD25<sup>-</sup>CD31<sup>+</sup>

and CD4<sup>+</sup>CD45RA<sup>high</sup>CD27<sup>high</sup>CD25<sup>-</sup>CD31<sup>-</sup>CD4 T cell TCR repertoires are nearly identical within the same age group, but both prominently differ between the younger and elder donors (Figures 5A,B). It should be noted that, since the average CDR3 length decreases with age, larger portions of TRBV and TRBJ segments could be covered by our analysis of the middle 5 amino acid residues of CDR3, which could in turn influence the result amino acid property averages. However, this influence was not prominent since different TRBV segments behaved similarly in our analysis.

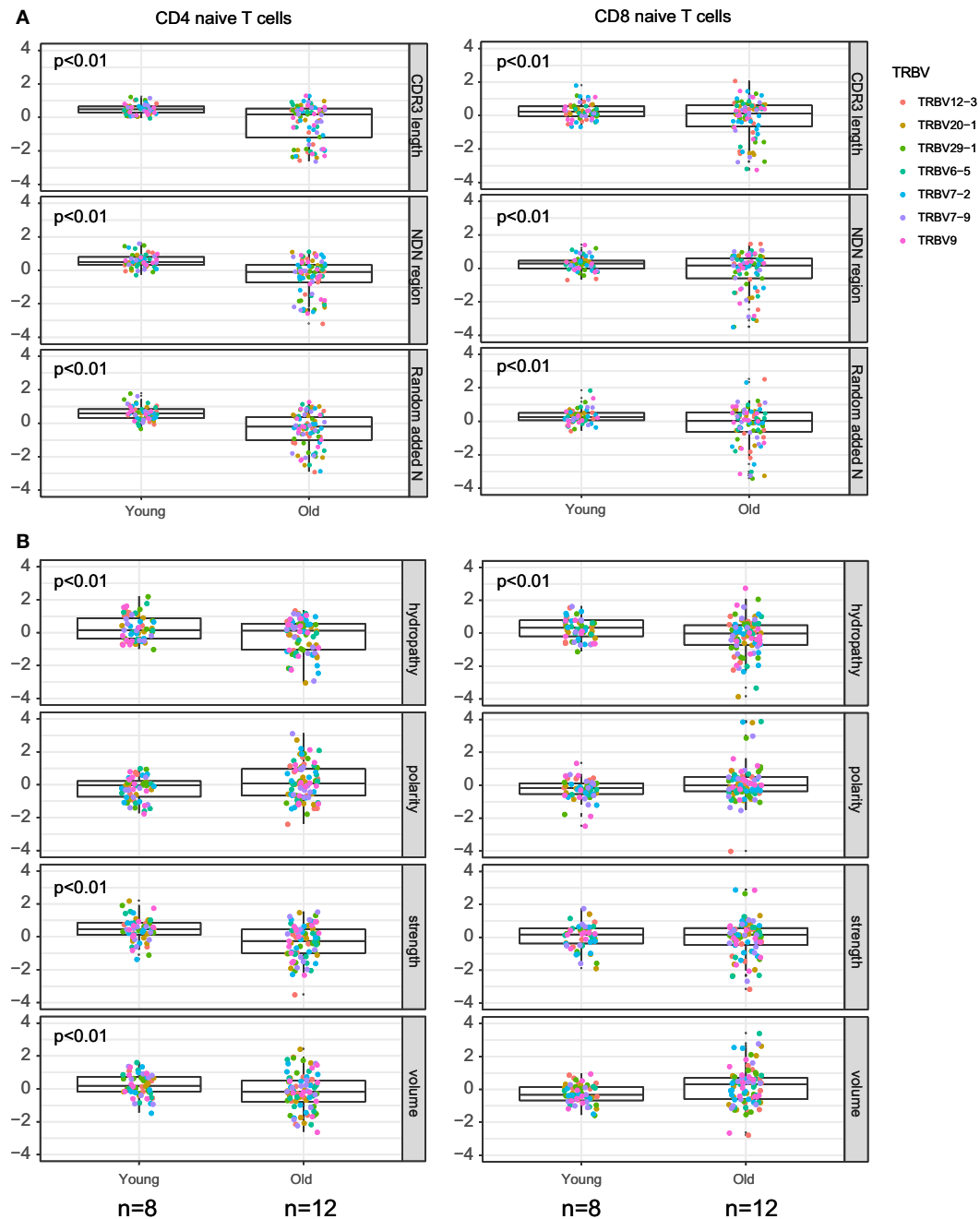
Furthermore, young and old naïve CD4 T cell repertoires were characterized by distinct frequencies of TRBV (Figure 6A), TRBJ (Figure 6B), and paired TRBV–TRBJ (Figure 6C) gene segment usage, without any notable differences observed between the RTE-enriched CD31<sup>+</sup> and mature naïve CD4 T cell subsets.

Similarly to naïve CD4 and CD8 subsets, RTE-enriched and mature naïve CD4 subsets showed a tendency toward increased clonality in the elder age (Figure 2B).

We concluded that observed changes in the characteristics of naïve CD4 T cell TCR beta CDR3 repertoire with aging affect both RTE-enriched and mature subsets, and do not result from the changes in CD31<sup>+</sup>/CD31<sup>-</sup> subsets ratio.

## Publicity of Naïve CD4 T Cell Repertoire Grows With Aging

Shorter CDR3 length and lower number of randomly added N nucleotides are commonly associated with higher publicity of TCR repertoires (53, 54). To analyze how the relative publicity of naïve CD4 TCR beta repertoires changes with aging, we extracted top-3,000 clonotypes from each dataset, with random sampling of clonotypes having the identical low frequency—a normalization step which is highly desirable to minimize biases in comparison of immune repertoires overlaps. As it could be expected based on

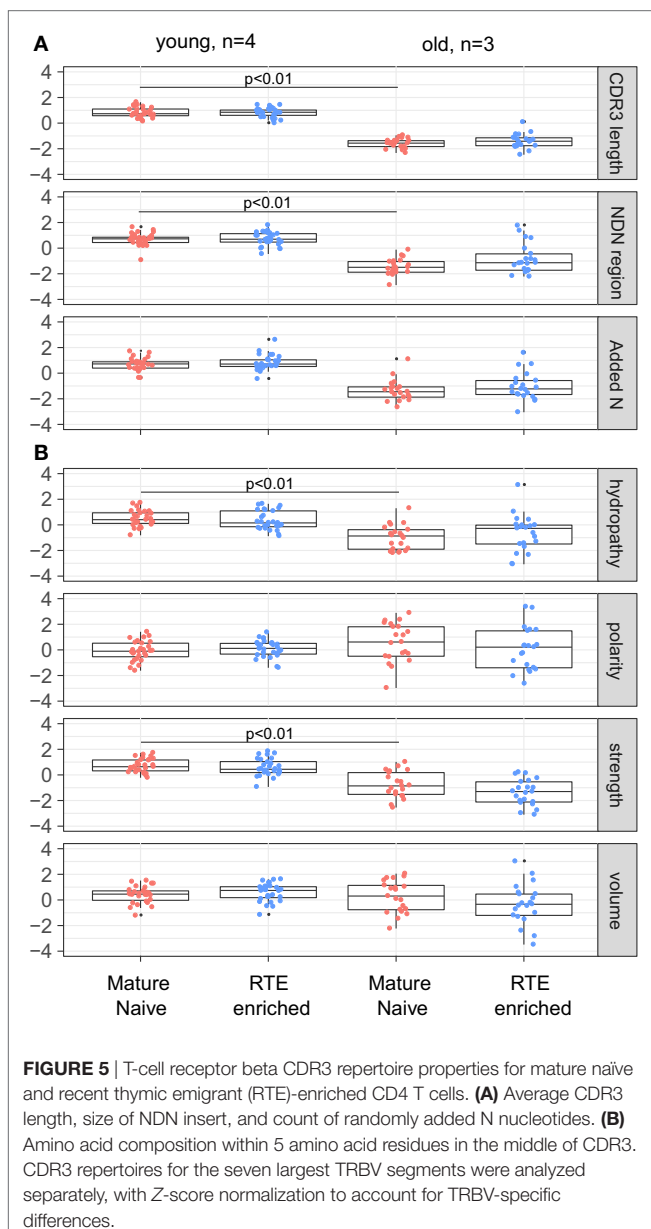
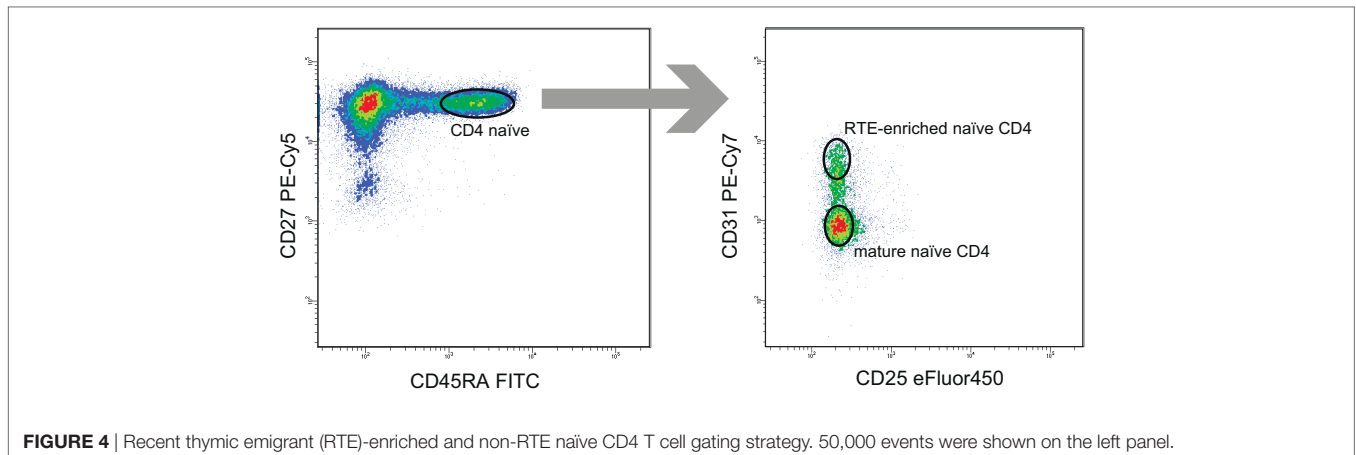


**FIGURE 3** | Properties of naive T cell T-cell receptor (TCR) beta CDR3 repertoires and aging. Weighted (accounting for clonotype size) analysis of TCR beta repertoire properties for CD4 and CD8 naive T cells derived from peripheral blood samples of young and old healthy donors. **(A)** Average CDR3 length, size of NDN insert, and count of randomly added N nucleotides. **(B)** Amino acid composition within 5 amino acid residues in the middle of CDR3. Our data and Qi et al. data,  $n = 8$  young and 12 old individuals totally. CDR3 repertoires for the seven largest TRBV segments were analyzed separately, with Z-score normalization to account for TRBV-specific differences.

CDR3 characteristics (**Figures 5A** and **7A**), analysis of relative overlaps between TCR beta CDR3 repertoires revealed that relative publicity of total CD4 naive [our data only, excluding the data from Ref. (34)], RTE-enriched CD31<sup>+</sup> and mature naive CD31<sup>-</sup> CD4 T cell subsets grows with aging (**Figure 7B**). A moderate overlap was observed between the young and middle-age/old

CD4 naive, RTE-enriched CD31<sup>+</sup> and mature naive CD31<sup>-</sup> CD4 T cell subsets. No clear age-related changes in relative publicity were observed for CD8 naive T cells (our data only).

We used CDR3 sequence similarity graph to analyze whether naive TCR repertoires form separate networks in young versus old donors. To build the graph, we selected 3,000 most abundant



clonotypes from each donor and pooled them together to form the set of nodes. We connected two clonotypes with an edge if they had the same VJ-combination and CDR3 differed by a single amino acid substitution. Next, we counted the number of edges connecting clonotypes from donors of different age groups (young versus old) and obtained empirical distributions for these counts by running 1,000 random permutations of age group labels.

We found, that in CD8 naive repertoires, the number of edges between clonotypes from young and old donors is larger in data than in simulation in 424 donor age group permutations out of 1,000, so there is no evidence for separate CDR3 networks for young and old donors for this subset. In CD4 naive repertoires, however, there was a weak tendency: only in 95 simulations out of 1,000 (empirical *P*-value of 0.095) we found a lower number of edges between donors of different age, than the one observed in real data. This suggests that repertoires of naive CD4 T cells include distinct communities of homologous TCR variants in young and old individuals. However, this effect was only marginally significant and requires further investigation.

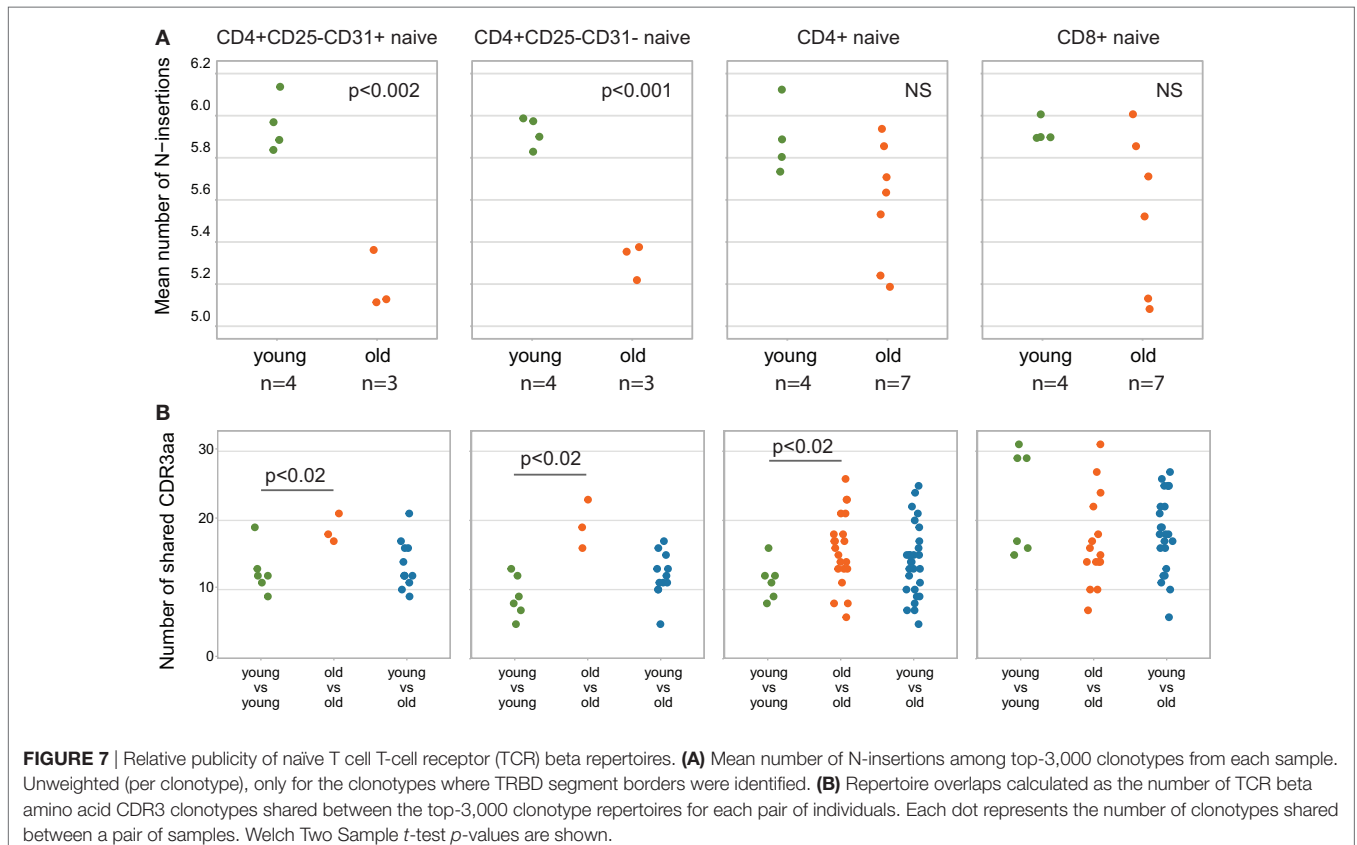
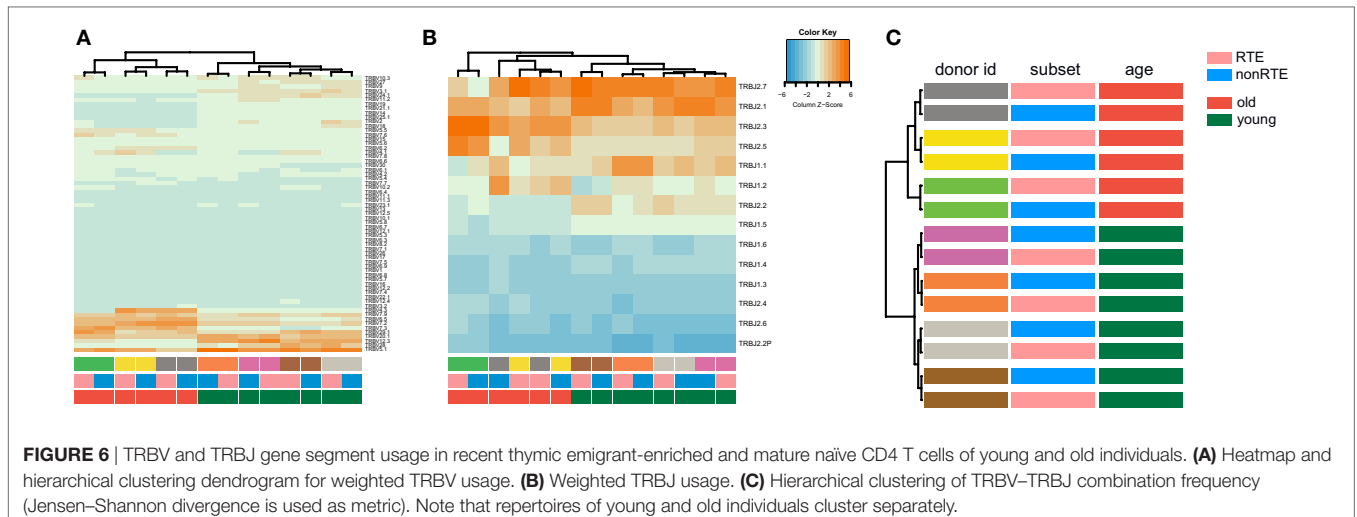
## DISCUSSION

With aging, decreasing thymic output can not efficiently sustain naive T cell counts, so the homeostatic proliferation becomes the main mechanism to replenish this cell pool in humans. Such proliferation is inevitably associated with certain biases that shape the landscape of naive T cell TCR repertoire and thus affect the spectrum of the antigens they could recognize.

We have utilized immune repertoire sequencing to study the repertoires of naive T cells in young and aged donors and revealed notable changes in human TCR repertoires of both CD4 and CD8 peripheral blood naive T cells with aging:

- (1) We confirm the observation of Ref. (34) that relative clonality reflecting the extent of clonal expansion increases both within CD4 and CD8 naive T cell subsets with age (**Figure 2**).
- (2) We demonstrate that average CDR3 length, NDN insert length, and number of randomly added N nucleotides significantly decrease with aging in all subsets of naive T cells, including CD4, CD8, CD4 RTE-enriched CD25<sup>-</sup>, and CD4





mature naive CD25<sup>-</sup> subsets (Figures 3A, 5A and 7A). Interestingly, due to spatial restrictions in TCR-pMHC interaction, the length of CDR3 is inversely related to the length of recognized peptide antigen, which affects the spectrum of recognized pMHCs (Shugay et al., manuscript under consideration). The decrease of CDR3 length with aging could, therefore, reflect the averaged properties of pMHCs that are preferentially recognized by naive T cells in the periphery, and cause better tonic signaling, leading to earlier exhaustion

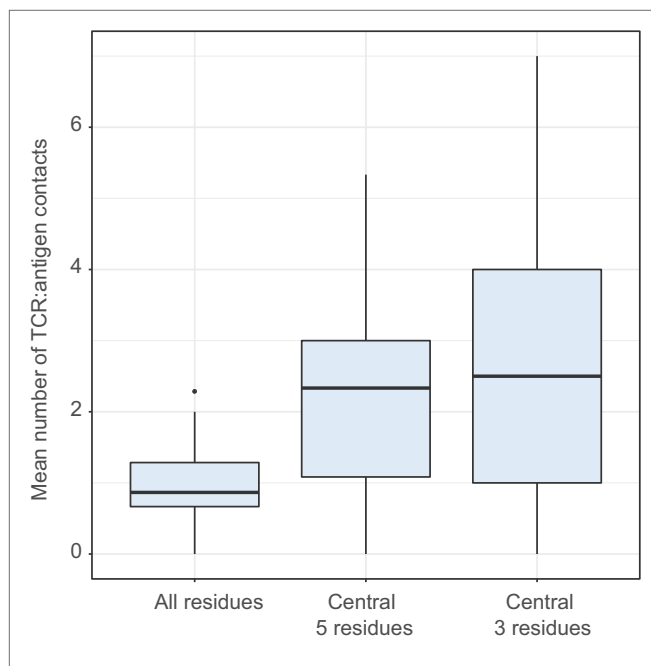
of proliferation capacity of the cells carrying corresponding TCR variants.

(3) As could be expected based on previous works (53, 54), the abovementioned changes favored higher publicity in CD4 naive T cells (Figure 7B). At the same time, we have not observed clear differences in TCR beta CDR3 repertoire publicity for CD8 compartment. These observations differ from the data from Qi et al. (34) suggesting the decrease of CD8 naive T cell publicity with aging. Further studies

on larger cohorts with thoroughly controlled purity of cell sorting, and proper normalization of the datasets for comparing publicity of repertoires (49) should clarify this point.

- (4) Averaged amino acid characteristics in the middle of CDR3 change prominently in CD4, CD8, CD4 RTE-enriched, and CD4 mature naive subsets (**Figures 3B** and **5B**). In particular, significant decrease is observed for the “strength” metrics, which represents the count of strongly interacting amino acid residues (47, 48). The “strongly interacting” include F, L, I, M, and V that may form hydrophobic contacts, as well as aromatic residues W and Y that are capable of different types of interactions including offset stacked or edge-to-face interactions, thiol–aromatic interactions, and others (55), and may consist of electrostatic, van der Waals, and hydrophobic forces. Correspondingly, similar changes are observed for the “hydrophathy” metrics which counts the number of hydrophobic residues in the middle of CDR3.

The “strength” metric efficiently differentiates functional T cell subpopulations, such as Treg and non-Treg CD4 subsets [see Ref. (49, 56) and our data to be published elsewhere]. This metric can be interpreted as an averaged estimation of TCR repertoire affinity to peptide–MHC complexes and in particular to the antigenic peptide, since the middle portion of CDR3 is often in contact with the presented antigen (**Figure 8**).



**FIGURE 8** | Number of CDR3:antigenic peptide contacts in structural data. Comparing the mean number of contacts for entire CDR3 (All positions) and its central region (central 5 residues and central 3 residues). ANOVA followed by a *post hoc* Tukey test shows significantly higher number of contacts for the central region:  $P < 10^{-9}$  when comparing 5 and 3 central residues to all residues, but no difference between 5 and 3 central residues ( $P = 0.42$ ). The analysis was performed for T-cell receptor (TCR) beta chain using 110 human TCR:pMHC complexes from Protein Data Bank.

The decrease of relative abundance of strongly interacting amino acid residues within TCR beta CDR3 repertoire of naive T cells with aging may, therefore, reflect more rapid depletion of naive T cell clones with higher affinity to self pMHC. This could result from more efficient tonic signaling and generally faster proliferation, exhaustion of proliferation capacity, and extinction of such naive T cells (38).

Notably, similar changes were observed within RTE-enriched CD31<sup>+</sup> and mature naive CD31<sup>-</sup> CD4 naive T cells (**Figures 5–7**). Decrease of the “strength” metric was even more prominent for the RTE-enriched subset (**Figure 5B**), suggesting that the CD31<sup>+</sup> naive CD4 T cell clones bearing TCR variants with high affinity to self pMHC are prominently switching to the CD31<sup>-</sup> phenotype due to more efficient TCR signaling.

Complementary explanation for the changes observed in the naive T cell TCR repertoire characteristics with aging is that the high affinity variants are washed away from the naive T cell pool in the course of ongoing immune responses. Both CD4<sup>+</sup> and CD8<sup>+</sup> T cells with strong reaction to self and high tonic signaling dominate in responses to foreign antigens (37, 57, 58). Positive selection in thymus thus favors production of more efficiently responding T cells that should be also more rapidly depleted from the naive T cell pool. If this is the case, the age-related changes are associated with generation of prominent functional holes in the landscape of naive T cell receptor repertoire.

An additional factor that could contribute to the observed changes in naive T cell TCR repertoires is the easier conversion of clones with high affinity to self pMHC to the “memory-like” phenotype, as shown in mice models (59, 60), although such observations have not yet found clear confirmation in humans (3).

Altogether, the observed changes could be interpreted as elimination of generally more “sticky”—having higher affinity to self and non-self peptide–MHC complexes—TCR variants from the naive T cell pool with aging.

However, there is also an alternative explanation which deserves consideration. Shorter CDR3s, lower numbers of randomly added N nucleotides, and higher publicity are characteristic features of the early wave(s) of naive T cells generated during fetal period (23, 40, 61–63). Such early wave(s) originate from distinct population(s) of hematopoietic stem cells that may have distinct long-term program including higher proliferation potential (39, 42).

Considering the drop in thymic activity that happens in the middle age (4, 26), one could hypothesize that the counts of conventional naive T cell decrease after exhaustion of their limited proliferation capacity, while the early-wave naive T cells of fetal origin with prolonged proliferation capacity persist. Such organization of T cell adaptive immunity in the elderly could be beneficial from the point of more predictable innate-like behavior of the T cells carrying a relatively restricted, more germline-encoded TCR repertoire. To some extent, our network analysis of naive CD4 T cell TCR repertoires supports this concept.

Summing up, our study sheds light on the intrinsic changes in the naive T cell TCR repertoire structure with aging, and calls

for further functional studies that could clarify the underlying mechanisms.

## ETHICS STATEMENT

The study was approved by the local ethics committee and conducted in accordance with the Declaration of Helsinki. All donors were informed of the final use of their blood and signed an informed consent document.

## AUTHOR CONTRIBUTIONS

EE and DS performed cell sorting. EE, SK, VZ, TN, MS, and MP analyzed the data. EE, MS, and DC prepared the figures. EE, MI, AA, FC, IM, ER, and AF worked on library preparation and sequencing. DC and OB designed the entire study and wrote the

manuscript. MS, ER, and AF edited the manuscript. All authors reviewed and approved the final manuscript.

## ACKNOWLEDGMENTS

We thank Minervina A.A. for the help with figures preparation. Cell sorting experiments were carried out using the equipment provided by the IBCH Core facility (CKP IBCH, supported by Russian Ministry of Education and Science, grant RFMEFI62117 × 0018).

## FUNDING

This work was funded by Russian Science Foundation Project 16-15-00149. AF and ER received support from the H2020 EU SYSCID project (grant agreement 733100).

## REFERENCES

- Marks BR, Nowyhed HN, Choi JY, Poholek AC, Odegard JM, Flavell RA, et al. Thymic self-reactivity selects natural interleukin 17-producing T cells that can regulate peripheral inflammation. *Nat Immunol* (2009) 10:1125–32. doi:10.1038/ni.1783
- Nikolich-Zugich J. Aging of the T cell compartment in mice and humans: from no naive expectations to foggy memories. *J Immunol* (2014) 193:2622–9. doi:10.4049/jimmunol.1401174
- Goronzy JJ, Fang F, Cavanagh MM, Qi Q, Weyand CM. Naive T cell maintenance and function in human aging. *J Immunol* (2015) 194:4073–80. doi:10.4049/jimmunol.1500046
- Kumar BV, Connors TJ, Farber DL, Human T. Cell development, localization, and function throughout life. *Immunity* (2018) 48:202–13. doi:10.1016/j.immuni.2018.01.007
- van den Broek T, Borghans JAM, van Wijk F. The full spectrum of human naive T cells. *Nat Rev Immunol* (2018) 18(6):363–73. doi:10.1038/s41577-018-0001-y
- Goodwin K, Viboud C, Simonsen L. Antibody response to influenza vaccination in the elderly: a quantitative review. *Vaccine* (2006) 24:1159–69. doi:10.1016/j.vaccine.2005.08.105
- Aspinall R, Del Giudice G, Effros RB, Grubeck-Loebenstien B, Sambhara S. Challenges for vaccination in the elderly. *Immun Ageing* (2007) 4:9. doi:10.1186/1742-4933-4-9
- Pinti M, Appay V, Campisi J, Frasca D, Fulop T, Sauce D, et al. Aging of the immune system: focus on inflammation and vaccination. *Eur J Immunol* (2016) 46:2286–301. doi:10.1002/eji.201546178
- Fulop T, Larbi A, Kotb R, de Angelis F, Pawelec G. Aging, immunity, and cancer. *Discov Med* (2011) 11:537–50.
- Foster AD, Sivarapatna A, Gress RE. The aging immune system and its relationship with cancer. *Aging health* (2011) 7:707–18. doi:10.2217/ahe.11.56
- Fulop T, Larbi A, Witkowski JM, Kotb R, Hirokawa K, Pawelec G. Immunosenescence and cancer. *Crit Rev Oncog* (2013) 18:489–513. doi:10.1615/CritRevOncog.2013010597
- Stronen E, Toebes M, Kelderman S, van Buuren MM, Yang W, van Rooij N, et al. Targeting of cancer neoantigens with donor-derived T cell receptor repertoires. *Science* (2016) 352:1337–41. doi:10.1126/science.aaf2288
- Howcroft TK, Campisi J, Louis GB, Smith MT, Wise B, Wyss-Coray T, et al. The role of inflammation in age-related disease. *Aging (Albany NY)* (2013) 5:84–93. doi:10.18632/aging.100531
- Franceschi C, Campisi J. Chronic inflammation (inflammaging) and its potential contribution to age-associated diseases. *J Gerontol A Biol Sci Med Sci* (2014) 69(Suppl 1):S4–9. doi:10.1093/gerona/glu057
- Watson N, Ding B, Zhu X, Frisina RD. Chronic inflammation – inflammaging – in the ageing cochlea: a novel target for future presbycusis therapy. *Ageing Res Rev* (2017) 40:142–8. doi:10.1016/j.arr.2017.10.002
- Li MO, Rudensky AY. T cell receptor signalling in the control of regulatory T cell differentiation and function. *Nat Rev Immunol* (2016) 16:220–33. doi:10.1038/nri.2016.26
- Feng Y, van der Veeken J, Shugay M, Putintseva EV, Osmanbeyoglu HU, Dikiy S, et al. A mechanism for expansion of regulatory T-cell repertoire and its role in self-tolerance. *Nature* (2015) 528:132–6. doi:10.1038/nature16141
- Messaoudi I, Lemaoult J, Guevara-Patino JA, Metzner BM, Nikolich-Zugich J. Age-related CD8 T cell clonal expansions constrict CD8 T cell repertoire and have the potential to impair immune defense. *J Exp Med* (2004) 200:1347–58. doi:10.1084/jem.20040437
- Goronzy JJ, Weyand CM. T cell development and receptor diversity during aging. *Curr Opin Immunol* (2005) 17:468–75. doi:10.1016/j.coi.2005.07.020
- Naylor K, Li G, Vallejo AN, Lee WW, Koetz K, Bryl E, et al. The influence of age on T cell generation and TCR diversity. *J Immunol* (2005) 174:7446–52. doi:10.4049/jimmunol.174.11.7446
- Goronzy JJ, Lee WW, Weyand CM. Aging and T-cell diversity. *Exp Gerontol* (2007) 42:400–6. doi:10.1016/j.exger.2006.11.016
- Britanova OV, Putintseva EV, Shugay M, Merzlyak EM, Turchaninova MA, Staroverov DB, et al. Age-related decrease in TCR repertoire diversity measured with deep and normalized sequence profiling. *J Immunol* (2014) 192:2689–98. doi:10.4049/jimmunol.1302064
- Britanova OV, Shugay M, Merzlyak EM, Staroverov DB, Putintseva EV, Turchaninova MA, et al. Dynamics of individual T cell repertoires: from cord blood to centenarians. *J Immunol* (2016) 196:5005–13. doi:10.4049/jimmunol.1600005
- Chinn IK, Blackburn CC, Manley NR, Sempowski GD. Changes in primary lymphoid organs with aging. *Semin Immunol* (2012) 24:309–20. doi:10.1016/j.smim.2012.04.005
- Palmer DB. The effect of age on thymic function. *Front Immunol* (2013) 4:316. doi:10.3389/fimmu.2013.00316
- Thome JJ, Grinshpun B, Kumar BV, Kubota M, Ohmura Y, Lerner H, et al. Longterm maintenance of human naive T cells through in situ homeostasis in lymphoid tissue sites. *Sci Immunol* (2016) 1:eaa6506. doi:10.1126/sciimmunol.aah6506
- Kyoizumi S, Kubo Y, Kajimura J, Yoshida K, Imai K, Hayashi T, et al. Age-associated changes in the differentiation potentials of human circulating hematopoietic progenitors to T- or NK-lineage cells. *J Immunol* (2013) 190:6164–72. doi:10.4049/jimmunol.1203189
- Haines CJ, Giffon TD, Lu LS, Lu X, Tessier-Lavigne M, Ross DT, et al. Human CD4+ T cell recent thymic emigrants are identified by protein tyrosine kinase 7 and have reduced immune function. *J Exp Med* (2009) 206:275–85. doi:10.1084/jem.20080996
- Fink PJ. The biology of recent thymic emigrants. *Annu Rev Immunol* (2013) 31:31–50. doi:10.1146/annurev-immunol-032712-100010
- Kilpatrick RD, Rickabaugh T, Hultin LE, Hultin P, Hausner MA, Detels R, et al. Homeostasis of the naive CD4+ T cell compartment during aging. *J Immunol* (2008) 180:1499–507. doi:10.4049/jimmunol.180.10.6437-a

31. Qi Q, Zhang DW, Weyand CM, Goronzy JJ. Mechanisms shaping the naive T cell repertoire in the elderly – thymic involution or peripheral homeostatic proliferation? *Exp Gerontol* (2014) 54:71–4. doi:10.1016/j.exger.2014.01.005
32. den Braber I, Mugwagwa T, Vrisekoop N, Westera L, Mogling R, de Boer AB, et al. Maintenance of peripheral naive T cells is sustained by thymus output in mice but not humans. *Immunity* (2012) 36:288–97. doi:10.1016/j.immuni.2012.02.006
33. Sauce D, Larsen M, Fastenackels S, Roux A, Gorochov G, Katlama C, et al. Lymphopenia-driven homeostatic regulation of naive T cells in elderly and thymectomized young adults. *J Immunol* (2012) 189:5541–8. doi:10.4049/jimmunol.1201235
34. Qi Q, Liu Y, Cheng Y, Glanville J, Zhang D, Lee JY, et al. Diversity and clonal selection in the human T-cell repertoire. *Proc Natl Acad Sci U S A* (2014) 111:13139–44. doi:10.1073/pnas.1409155111
35. Takeda S, Rodewald HR, Arakawa H, Bluethmann H, Shimizu T. MHC class II molecules are not required for survival of newly generated CD4+ T cells, but affect their long-term life span. *Immunity* (1996) 5:217–28. doi:10.1016/S1074-7613(00)80317-9
36. Azzam HS, Grinberg A, Lui K, Shen H, Shores EW, Love PE. CD5 expression is developmentally regulated by T cell receptor (TCR) signals and TCR avidity. *J Exp Med* (1998) 188:2301–11. doi:10.1084/jem.188.12.2301
37. Stefanova I, Dorfman JR, Germain RN. Self-recognition promotes the foreign antigen sensitivity of naive T lymphocytes. *Nature* (2002) 420:429–34. doi:10.1038/nature01146
38. Myers DR, Zikherman J, Roose JP. Tonic signals: why do lymphocytes bother? *Trends Immunol* (2017) 38:844–57. doi:10.1016/j.it.2017.06.010
39. Pogorelyy MV, Elhanati Y, Marcou Q, Sycheva AL, Komech EA, Nazarov VI, et al. Persisting fetal clonotypes influence the structure and overlap of adult human T cell receptor repertoires. *PLoS Comput Biol* (2017) 13:e1005572. doi:10.1371/journal.pcbi.1005572
40. George JF Jr, Schroeder HW Jr. Developmental regulation of D beta reading frame and junctional diversity in T cell receptor-beta transcripts from human thymus. *J Immunol* (1992) 148:1230–9.
41. Benedict CL, Gilfillan S, Thai TH, Kearney JF. Terminal deoxynucleotidyl transferase and repertoire development. *Immunol Rev* (2000) 175:150–7. doi:10.1111/j.1600-065X.2000.imr017518.x
42. Mold JE, Venkatasubrahmanyam S, Burt TD, Michaelsson J, Rivera JM, Galkina SA, et al. Fetal and adult hematopoietic stem cells give rise to distinct T cell lineages in humans. *Science* (2010) 330:1695–9. doi:10.1126/science.1196509
43. Egorov ES, Merzlyak EM, Shelonov AA, Britanova OV, Sharonov GV, Staroverov DB, et al. Quantitative profiling of immune repertoires for minor lymphocyte counts using unique molecular identifiers. *J Immunol* (2015) 194:6155–63. doi:10.4049/jimmunol.1500215
44. Egorov E. Human TCR alpha and beta RNA-based RACE protocol with unique molecular barcoding. *Protoc Exch* (2016). doi:10.1038/protex.2016.044
45. Bolotin DA, Poslavsky S, Mitrophanov I, Shugay M, Mamedov IZ, Putintseva EV, et al. MiXCR: software for comprehensive adaptive immunity profiling. *Nat Methods* (2015) 12:380–1. doi:10.1038/nmeth.3364
46. Shugay M, Bagaev DV, Turchaninova MA, Bolotin DA, Britanova OV, Putintseva EV, et al. VDJtools: unifying post-analysis of T cell receptor repertoires. *PLoS Comput Biol* (2015) 11:e1004503. doi:10.1371/journal.pcbi.1004503
47. Miyazawa S, Jernigan RL. Residue-residue potentials with a favorable contact pair term and an unfavorable high packing density term, for simulation and threading. *J Mol Biol* (1996) 256:623–44. doi:10.1006/jmbi.1996.0114
48. Kosmrlj A, Jha AK, Huseby ES, Kardar M, Chakraborty AK. How the thymus designs antigen-specific and self-tolerant T cell receptor sequences. *Proc Natl Acad Sci U S A* (2008) 105:16671–6. doi:10.1073/pnas.0808081105
49. Izraelson M, Nakonechnaya TO, Moltedo B, Egorov ES, Kasatskaya SA, Putintseva EV, et al. Comparative analysis of murine T-cell receptor repertoires. *Immunology* (2018) 153:133–44. doi:10.1111/imm.12857
50. Bolotin DA, Mamedov IZ, Britanova OV, Zvyagin IV, Shagin D, Ustyugova SV, et al. Next generation sequencing for TCR repertoire profiling: platform-specific features and correction algorithms. *Eur J Immunol* (2012) 42:3073–83. doi:10.1002/eji.201242517
51. Carlson CS, Emerson RO, Sherwood AM, Desmarais C, Chung MW, Parsons JM, et al. Using synthetic templates to design an unbiased multiplex PCR assay. *Nat Commun* (2013) 4:2680. doi:10.1038/ncomms3680
52. Pekalski ML, Ferreira RC, Coulson RM, Cutler AJ, Guo H, Smyth DJ, et al. Postthymic expansion in human CD4 naive T cells defined by expression of functional high-affinity IL-2 receptors. *J Immunol* (2013) 190:2554–66. doi:10.4049/jimmunol.1202914
53. Venturi V, Price DA, Douek DC, Davenport MP. The molecular basis for public T-cell responses? *Nat Rev Immunol* (2008) 8:231–8. doi:10.1038/nri2260
54. Murugan A, Mora T, Walczak AM, Callan CG Jr. Statistical inference of the generation probability of T-cell receptors from sequence repertoires. *Proc Natl Acad Sci U S A* (2012) 109:16161–6. doi:10.1073/pnas.1212755109
55. Chakrabarti P, Bhattacharyya R. Geometry of nonbonded interactions involving planar groups in proteins. *Prog Biophys Mol Biol* (2007) 95:83–137. doi:10.1016/j.pbiomolbio.2007.03.016
56. Bolotin DA, Poslavsky S, Davydov AN, Frenkel FE, Fanchi L, Zolotareva OI, et al. Antigen receptor repertoire profiling from RNA-seq data. *Nat Biotechnol* (2017) 35:908–11. doi:10.1038/nbt.3979
57. Mandl JN, Monteiro JB, Vrisekoop N, Germain RN. T cell-positive selection uses self-ligand binding strength to optimize repertoire recognition of foreign antigens. *Immunity* (2013) 38:263–74. doi:10.1016/j.immuni.2012.09.011
58. Fulton RB, Hamilton SE, Xing Y, Best JA, Goldrath AW, Hogquist KA, et al. The TCR's sensitivity to self peptide-MHC dictates the ability of naive CD8(+) T cells to respond to foreign antigens. *Nat Immunol* (2015) 16:107–17. doi:10.1038/ni.3043
59. Rudd BD, Venturi V, Li G, Samadder P, Ertelt JM, Way SS, et al. Nonrandom attrition of the naive CD8+ T-cell pool with aging governed by T-cell receptor:pMHC interactions. *Proc Natl Acad Sci U S A* (2011) 108:13694–9. doi:10.1073/pnas.1107594108
60. Sprent J, Surh CD. Normal T cell homeostasis: the conversion of naive cells into memory-phenotype cells. *Nat Immunol* (2011) 12:478–84. doi:10.1038/ni.2018
61. Feeney AJ. Lack of N regions in fetal and neonatal mouse immunoglobulin V-D-J junctional sequences. *J Exp Med* (1990) 172:1377–90. doi:10.1084/jem.172.5.1377
62. Bogue M, Gilfillan S, Benoist C, Mathis D. Regulation of N-region diversity in antigen receptors through thymocyte differentiation and thymus ontogeny. *Proc Natl Acad Sci U S A* (1992) 89:11011–5. doi:10.1073/pnas.89.22.11011
63. Cherrier M, Cardona A, Rosinski-Chupin I, Rougeon F, Doyen N. Substantial N diversity is generated in T cell receptor alpha genes at birth despite low levels of terminal deoxynucleotidyl transferase expression in mouse thymus. *Eur J Immunol* (2002) 32:3651–6. doi:10.1002/1521-4141(200212)32:12<3651::AID-IMMU3651>3.0.CO;2-D

**Conflict of Interest Statement:** The authors declare that the research was conducted in the absence of any commercial or financial relationships that could be construed as a potential conflict of interest.

Copyright © 2018 Egorov, Kasatskaya, Zubov, Izraelson, Nakonechnaya, Staroverov, Angius, Cucca, Mamedov, Rosati, Franke, Shugay, Pogorelyy, Chudakov and Britanova. This is an open-access article distributed under the terms of the Creative Commons Attribution License (CC BY). The use, distribution or reproduction in other forums is permitted, provided the original author(s) and the copyright owner(s) are credited and that the original publication in this journal is cited, in accordance with accepted academic practice. No use, distribution or reproduction is permitted which does not comply with these terms.