



A Systematic Review: The Role of Resident Memory T Cells in Infectious Diseases and Their Relevance for Vaccine Development

Visai Muruganandah¹, Harindra D. Sathkumara¹, Severine Navarro^{1,2} and Andreas Kupz^{1*}

¹Centre for Biosecurity and Tropical Infectious Diseases, Australian Institute of Tropical Health and Medicine, James Cook University, Cairns, QLD, Australia, ²QIMR Berghofer Medical Research Institute, Brisbane, QLD, Australia

OPEN ACCESS

Edited by:

Fathia Mami-Chouaib,
Institut National de la Santé et
de la Recherche Médicale
(INSERM), France

Reviewed by:

Vaiva Vezys,
University of Minnesota
Twin Cities, United States
Eric Tartour,
Hôpital Européen Georges-
Pompidou, France

*Correspondence:

Andreas Kupz
andreas.kupz@jcu.edu.au

Specialty section:

This article was submitted to
Immunological Memory,
a section of the journal
Frontiers in Immunology

Received: 26 March 2018

Accepted: 25 June 2018

Published: 09 July 2018

Citation:

Muruganandah V, Sathkumara HD,
Navarro S and Kupz A (2018) A
Systematic Review: The Role
of Resident Memory T Cells in
Infectious Diseases and Their
Relevance for Vaccine Development.
Front. Immunol. 9:1574.
doi: 10.3389/fimmu.2018.01574

Background: Resident memory T cells have emerged as key players in the immune response generated against a number of pathogens. Their ability to take residence in non-lymphoid peripheral tissues allows for the rapid deployment of secondary effector responses at the site of pathogen entry. This ability to provide enhanced regional immunity has gathered much attention, with the generation of resident memory T cells being the goal of many novel vaccines.

Objectives: This review aimed to systematically analyze published literature investigating the role of resident memory T cells in human infectious diseases. Known effector responses mounted by these cells are summarized and key strategies that are potentially influential in the rational design of resident memory T cell inducing vaccines have also been highlighted.

Methods: A Boolean search was applied to Medline, SCOPUS, and Web of Science. Studies that investigated the effector response generated by resident memory T cells and/or evaluated strategies for inducing these cells were included irrespective of published date. Studies must have utilized an established technique for identifying resident memory T cells such as T cell phenotyping.

Results: While over 600 publications were revealed by the search, 147 articles were eligible for inclusion. The reference lists of included articles were also screened for other eligible publications. This resulted in the inclusion of publications that studied resident memory T cells in the context of over 25 human pathogens. The vast majority of studies were conducted in mouse models and demonstrated that resident memory T cells mount protective immune responses.

Conclusion: Although the role resident memory T cells play in providing immunity varies depending on the pathogen and anatomical location they resided in, the evidence overall suggests that these cells are vital for the timely and optimal protection against a number of infectious diseases. The induction of resident memory T cells should be further investigated and seriously considered when designing new vaccines.

Keywords: resident memory T cells, infectious diseases, vaccine development, immunity, microbiology

INTRODUCTION

Traditionally, memory T cells have been subdivided into two broad categories: effector memory and central memory T cells (T_{EM} and T_{CM}, respectively). After the realization that some memory T cells fail to egress out of peripheral tissues back into the blood stream, it became clear that this dichotomous distinction of memory T cells did not account for the complete diversity of the memory T cell population. This led to the discovery of a third subset of memory T cell. Appropriately, dubbed “Tissue-resident memory T cells” (here after referred to as T_{RM}), this newly defined population exhibits the unique feature of remaining localized in peripheral tissues (1). As such, these cells provide enhanced localized immunosurveillance and protection of peripheral tissues when compared to T_{EM} and T_{CM}. T_{RM} have been characterized in many peripheral tissues, including skin, lungs, brain, liver, the female reproductive tract, and the gastrointestinal mucosa. Given the huge variance in their location of residence, this subset of memory cell is highly heterogeneous, phenotypically varying depending on their anatomic location and the inflammatory cues produced by their respective microenvironment. Although experimental techniques such as parabiosis can definitively distinguish T_{RM} from circulating memory T cells, other less complex methods of identifying T_{RM} are more frequently used. The co-expression of CD69 and CD103 is commonly used as a marker of tissue residence, although it appears not all bona fide T_{RM} are defined by this particular phenotype. Regardless, T_{RM} have been implicated in a wide range of physiological

functions, such as providing protection against pathogens and cancerous cells, as well as in many pathological states such as autoimmune and other inflammatory diseases. The exploration of T_{RM} biology and the role they play in maintaining homeostasis has broad implications for human health. Currently, our understanding of T_{RM} function is largely constrained within the context of infectious diseases. As of now, it appears that T_{RM} are better adapted to providing rapid protection against pathogen invasion when compared to their circulating counterparts (2–4). Thus, vaccines of the future would ideally establish a population of protective T_{RM} at the portals of entry most at risk of pathogen invasion to provide immediate and effective immunity, rather than relying on the delayed recruitment of effector cells from the circulating pool of memory cells. Since parenterally administered vaccines induce minimal tissue-specific protection, current routes of administering vaccines may need to be revised (5, 6). The present review will primarily focus on the role of T_{RM} in the immune response generated to a range of human pathogens and discuss future avenues for the development of T_{RM}-based vaccines.

METHODOLOGY

A systematic search of published literature was conducted. Literature was critically evaluated for evidence of the role T_{RM} play during infections and in vaccinology. A flowchart summarizing our methodology has been included (Figure 1). The preparation of this review was guided by the *PRISMA-P 2015 guideline* (7).

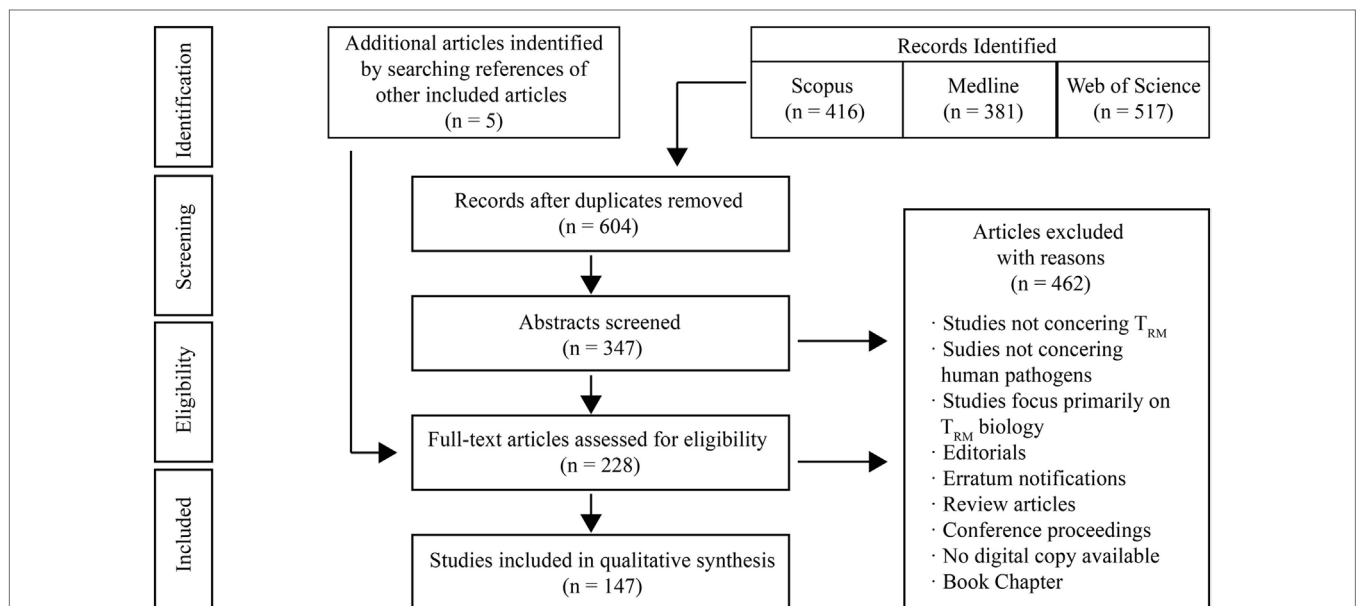


FIGURE 1 | Literature search strategy. The search strategy used revealed 381 records in Medline (Ovid), 416 in SCOPUS, and 517 in Web of Science. This resulted in a total number of 1,314 records. After removing duplicates, there were 604 records. Screening of titles resulted in the exclusion of 257 records, as they did not address resident memory T cells, human infectious diseases, or neither. Others records were excluded as they were reviews, editorials, meeting abstracts, book chapters, poster presentations, or erratum notifications. The abstracts of the remaining 347 records were analyzed and a further 124 publications were excluded due to their focus on T_{RM} biology. The full texts of the remaining studies were reviewed. 81 of these texts were excluded for aforementioned reasons. Co-authors were consulted when there was ambiguity regarding the relevance of a study. In total, 142 publications from the search were included. 5 additional studies were included by screening the references of studies from the search results and following external review.

Final searches of literature were performed on March 23, 2018 in Medline, SCOPUS and Web of Science by the first author. The Boolean search strategy used was as following (“resident memory t cell*” OR “t resident memory cell*” OR “tissue resident memory cell*” OR “resident memory” OR “tissue memory”). The references of included studies were also screened for other relevant publications.

Both human and animal studies that use surface markers of residence or other established techniques such as intravascular staining and parabiosis to illustrate localization of T cells to peripheral tissues, as well as T cell phenotyping were included. Studies were also screened for their relevance to human pathogens, and thus animal infection models that are analogous to human infectious diseases were included. Studies were included irrespective of published date. Only published and accepted manuscripts of original research were included. Publications that primarily focused on T_{RM} biology (ontogeny, cellular metabolism, etc.) or non-infectious diseases were not included. Certain non-communicable diseases such as hepatocellular

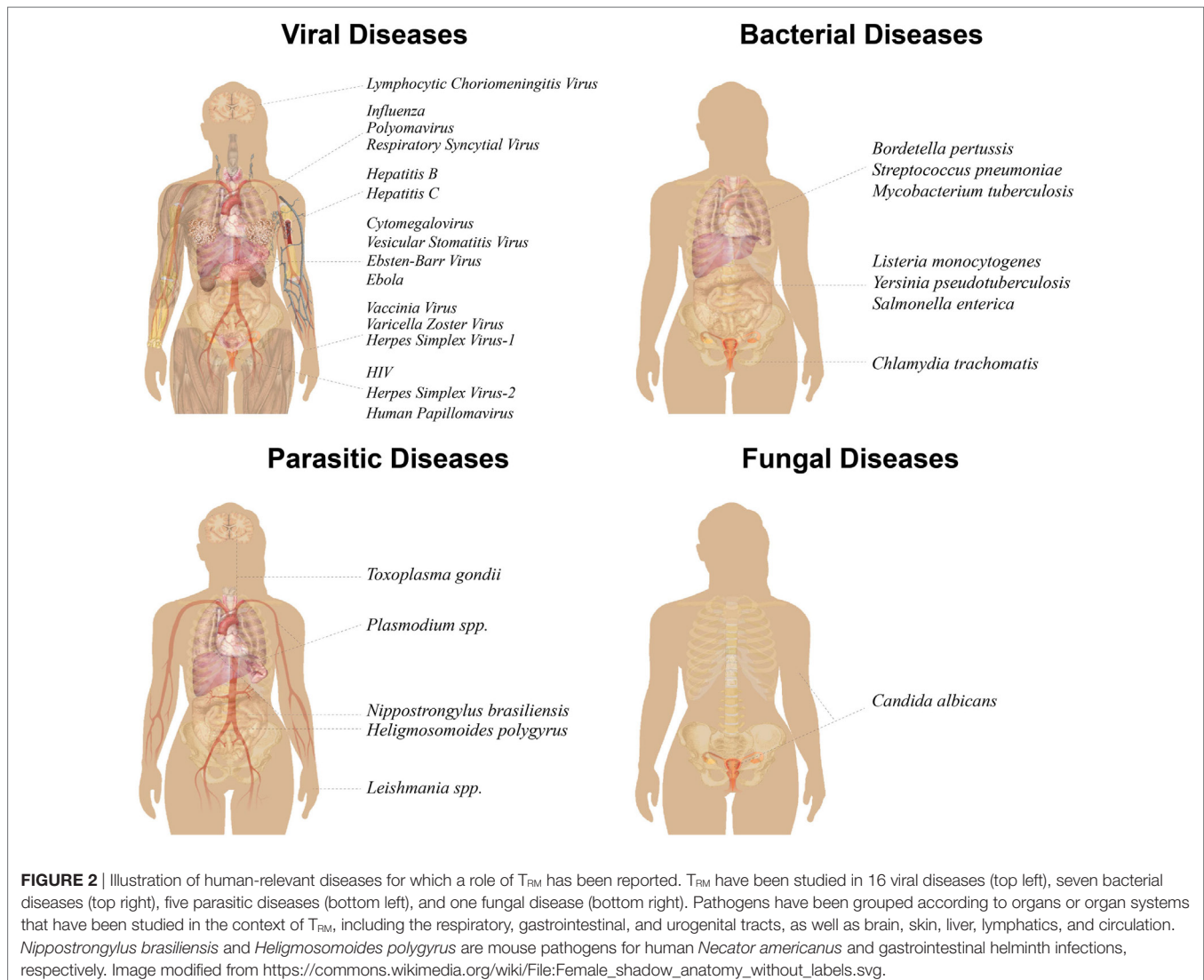
carcinoma and cervical cancer that can be caused by pathogens are briefly mentioned within the broader discussion of T_{RM}-mediated immunity.

RESULTS OF SEARCH

The results of the search strategy are summarized in **Figure 1**.

DATA SYNTHESIS AND ANALYSIS

The first author conducted extraction of data from relevant studies. This review has been divided into sections based on pathogen type: viruses, bacteria, parasites/helminths, and fungi (**Figure 2**). The studies included in this review contain the most relevant findings related to immune responses generated by T_{RM} against human pathogens, or make use of novel strategies for T_{RM} generation. We apologize to authors whose work could not be included in this review.



THE ROLE OF T_{RM} IN VIRAL INFECTIONS

As of present, T_{RM} immune responses are by far mostly studied in the context of viral pathogens. The following section will present findings by specific viral pathogen/viral disease.

HERPES SIMPLEX VIRUS (HSV)

Herpes simplex virus causes infections that present with a varying range of symptoms. The primary clinical manifestations of HSV infection are intraepithelial vesicles. There are two antigenically distinct HSV subtypes: HSV-1 and HSV-2, causing cold sores and genital warts, respectively (8). However, both sub-types can be the etiology of either clinical disease as sexual transmission allows for spread between the two sites (9). Both viruses establish a life-long latent infection within the surrounding nervous tissue, and control of HSV infection requires effective cell-mediated immune responses to prevent reactivation. However, co-morbid illnesses, immunosuppressive drugs, UV exposure, and psychological stress can hinder immune control. A number of studies suggest that T_{RM} are implicated in controlling HSV-1 latency in the trigeminal ganglia (10). HSV-1 infection models primarily focus on infections of the skin and nervous tissue such as the trigeminal ganglia and the eyes (11–22). Following acute infection with HSV-1, CD8⁺ T_{RM} remain localized to the skin initially infected and are also found surrounding latently infected sensory ganglia (11). However, evidence suggests that multiple exposures to cognate antigen can substantially increase the T_{RM} population in not only the site of HSV infection, but also in distant skin (12). CD8⁺ skin T_{RM} appear to resemble the antigen-presenting Langerhans cells of the skin, extending dendritic projections into the surrounding tissue, probably in an attempt to survey the local area for antigen (13). This is supported by evidence from confocal microscopy and intravital imaging (21) that suggests these T_{RM} can travel between keratinocytes (13). However, unlike Langerhans cells, these T_{RM} do not extend into the stratum corneum (13, 17). It also appears that skin T_{RM} are not specifically attracted to virally infected cells, and thus migrate throughout the epidermis in a random manner (17, 21). By extension, it can be inferred that skin T_{RM} may take a considerable period of time before identifying virally affected cells. As such, it may be safe to assume that a critical mass of skin T_{RM} is needed in order to afford timely protection. This notion is supported by the observation that protection appears to be dependent upon the local density of T_{RM} (17). Upon antigen recognition, skin T_{RM} undergo a change in their morphological and motility pattern, decelerating their migratory rate and losing their dendricity (13, 17). This is probably indicative of a shift in role from immunosurveillance to effector function. Furthermore, the maintenance of HSV-1-specific T_{RM} populations appears to be independent of circulating T cells in both skin and trigeminal ganglia (14, 17). Skin T_{RM} appear to be able to sustain their numbers through local proliferation after secondary infection (17). However, after a combined corticosterone and stress-induced reduction of trigeminal ganglia CD8⁺ T cells (presumably T_{RM}), there appeared to be

no increased proliferation of remaining T cells when compared to the homeostatic proliferation rates as indicated by BrdU incorporation (14). Analysis of HSV-1-specific skin and dorsal root ganglia T_{RM} during acute immunity and later time points revealed that transcription of cytolytic molecules decreases with time. As such, T_{RM}-based immunity in the long term may not be reliant on enhanced cytolytic effector functions, but rather on the localization of these cells at sites susceptible to reinfection (15). The chronic inflammatory response induced by persistent viral gene expression during latency leads to T_{RM} exhaustion in the brain ependymal region, rendering them unable to control HSV-1 infection (16). Perhaps the reason why T_{RM} downregulate their cytolytic genes during times of homeostasis is because continuous expression may lead to exhaustion. Nevertheless, it appears that the generation of CD8⁺ T_{RM} in skin and ganglia may be a viable option for protection against HSV-1 infection or reactivation. Local inflammation of the skin and mucosa alone can encourage the recruitment of T_{EM} to these peripheral sites where differentiation into the T_{RM} phenotype occurs. This was demonstrated using 2,4-dinitrofluorobenzene, a contact-sensitizing agent. Furthermore, the application of nonoxynol-9 (a spermicide agent) to the female genital tract enhanced protection against HSV challenge, correlating with higher numbers of CD103⁺ T cells localizing to the epithelium (19). Hence, agents that can be applied to specific tissue and that cause a localized, general inflammatory response may be a strategy worth exploring for the generation of T_{RM}. More specifically, however, the CXCL10/CXCR3 chemokine pathway appears to be vital in generating T_{RM}, as mice deficient in either CXCL10 or CXCR3 were unprotected against HSV-1 UV-B light-induced reactivation challenge. Furthermore, the administration of CXCL10 into deficient mice through the use of a neurotropic virus vector amplified T_{RM} in the trigeminal ganglia, conferring better protections against reactivation challenge (20). CXCL10 administration through the use of a rAAV8-CamKIIa-GFP-CamKIIa-CXCL10 vector showed similar results (18). Samples from human patients that were asymptomatic but seropositive for HSV-1 infection were used to determine which 467 HLA-A*0201-restricted CD8⁺ T cell epitopes were immunodominant in the HSV-1-specific immune response. These asymptomatic individuals generated a high number of polyfunctional CD8⁺ T_{EM} against three epitopes. HLA-A*0201 transgenic mice were primed with these epitopes and subsequently treated with an ocular topical preparation containing rAAV8-CamKIIa-GFP-CamKIIa-CXCL10 to deliver exogenous CXCL10 chemokine. Results from UV-B reactivation challenge demonstrated that this strategy was able to reduce viral shedding in tears and recurrent herpetic ocular disease (18). This strategy may be beneficial in rationally developing novel vaccines against other diseases.

Human studies have also been conducted in HSV-2 infection. Samples from the genital tract of HSV-2-infected women contained populations of HSV-2-specific T cells with a T_{RM} phenotype (23). More interestingly, a population of CD8 $\alpha\alpha$ ⁺ T_{RM} that reside at the dermal–epidermal junction have also been described in biopsies of HSV-2-infected humans. This unique positioning suggests that these cells may be able to survey the neural tissue from

which virus travels to the skin during reactivation (24). Thus, T_{RM} play a role in the natural immune response against HSV-2 infection. Although it was already demonstrated that T cells could be recruited to peripheral tissues using inflammatory agents (19), the “prime and pull” vaccine strategy was first described in a HSV-2 infection model (25). In this study, the investigators explored the novel idea of parenterally immunizing mice and subsequently topically administering CXCL10 into the vagina before challenging with HSV-2. Mice that underwent the prime and pull protocol showed minimal signs of clinical disease and had a survival rate of 100%. Naive and parenterally immunized mice that did not receive the pull treatment developed clinical disease and exhibited high mortality rates. This strategy also demonstrated the capacity to prevent infection of sensory neurons (25). Further investigation of this protocol revealed that immunity was largely dependent on INF- γ produced by CD8⁺ T_{RM} (26). Re-stimulation of this CD8⁺ T_{RM} was dependent on a population of CD301b⁺ dendritic cells that resided in the lamina propria. In fact, depletion of CD301b⁺ dendritic cells using a diphtheria toxin model rendered the prime and pull strategy ineffective and mice suffered high morbidity and mortality rates (26). Although a non-specific inflammatory stimulus such as nonoxynol-9 may be sufficient to pull CD8⁺ T cells in to the female reproductive tract and subsequently convert them to T_{RM}, it appears that antigen presentation by CD301b⁺ dendritic cells is needed for CD8⁺ T_{RM}-mediated immunity at this site. A different study that made use of a topical vaccine containing a human papillomavirus (HPV) vector expressing gB and gD ectodomains of HSV-2 has shown the capacity to generate T_{RM} in the reproductive tract, and reduce viral shedding and clinical disease (27). This study highlights the capacity of HPV vectors to induce T_{RM} in the genital tract, a vaccine strategy that may be applicable to other sexually transmitted infections. HSV-2-specific CD8⁺ T_{RM} can also be generated using a “chemical-free and biological-free” laser adjuvant, a protocol that could be explored in other infectious models (28). While the vast majority of studies have assessed the protective capabilities of CD8⁺ T_{RM} during HSV infection, very few studies have analyzed the role of CD4⁺ T_{RM} in HSV infections (21, 29). Intravaginal vaccination of mice with thymidine kinase negative HSV-2 (an attenuated form of the virus) provided full protection against challenge with wild-type HSV-2, independent of CD8⁺ T cells and B cells. Instead, parabiosis studies demonstrated that CD4⁺ T_{RM} are required within the genital tract mucosa for immunity in this model. These CD4⁺ T_{RM} are polyfunctional, secreting IFN- γ , TNF- α , and IL-2, and resided in organized, non-tertiary immune structures called memory lymphocyte clusters (MLCs). These MLCs appear to assemble under the influence of macrophage-secreted CCL5. Upon antigen stimulation, the CD4⁺ T_{RM} within the MLCs expand and secrete high levels of IFN- γ . The investigators of this study also report that circulating memory T cells were “barely recruited” when MLCs were present in the mucosa. This suggests that CD4⁺ T_{RM} may be capable of clearing or controlling infection even before recruiting signals are generated in a magnitude large enough to attract circulating T cells to the site of infection (29). It still remains necessary to explore whether a critical mass of CD4⁺ T_{RM}-containing MLCs are needed within the genital tract to provide protection. It is likely that this profound

role of CD4⁺ T_{RM} in mediating immunity during HSV-2 infection is due to the location of the infection (genital tract) rather than the viral factors alone. This is supported by the fact that MLCs have also been found in the genital tract of both human and mice secondary to infections caused by a bacterial pathogen [refer to *Chlamydia trachomatis* (Ct) section of this review]. Despite the difficulties in generating CD4⁺ T_{RM} following prime and pull vaccination, an ideal vaccine against HSV-2 should generate CD8⁺ and CD4⁺ T_{RM} (25).

INFLUENZA

Influenza viruses are a major cause of respiratory infections. Although influenza vaccines have been in use for many years, antigenic drift of surface hemagglutinin and neuraminidase proteins require annual immunizations. Antigenic shift can result in highly virulent strains of influenza that cause devastating pandemics (30). The ideal influenza vaccine would provide heterotypic immunity that prevents the escape of newly mutated viruses. Current influenza vaccines rely on generating high neutralizing antibody titers to protect against infection. Although this strategy has demonstrated efficacy in mediating protection, the inability of antibodies to neutralize new variants of the virus has sparked research into alternate strategies (31). Growing evidence suggests that efforts should be focused on developing vaccines that generate T_{RM}-mediated immunity (32). Analysis of human samples has revealed that influenza-specific T_{RM} can be found in substantial numbers in lung tissue, highlighting their role in natural infection (33, 34). Despite expressing low levels of granzyme B and CD107a, these CD8⁺ T_{RM} had a diverse T cell receptor (TCR) repertoire, high proliferative capacities, and were polyfunctional (34). Influenza infection history suggests a greater level of protection against re-infections likely due to the accumulation of CD8⁺ T_{RM} in the lungs (35). Furthermore, the natural immune response to influenza A virus infection in a rhesus monkey model demonstrated that a large portion of influenza-specific CD8⁺ T cells generated in the lungs were phenotypically confirmed as CD69⁺CD103⁺ T_{RM} (36). Unlike lung parenchymal T_{RM}, airway CD8⁺ T_{RM} are poorly cytolytic and participate in early viral replication control by producing a rapid and robust IFN- γ response (37, 38). Bystander CD8⁺ T_{RM} may also take part in the early immune response to infection through antigen non-specific, NKG2D-mediated immunity (39). The generation of functional T_{RM} that protect against heterosubtypic influenza infection appear to be dependent on signals from CD4⁺ T cells (40). A role for CD4⁺ T_{RM} has also been reported (41). Much like their CD8⁺ counterparts, CD4⁺ T_{RM} also produce a significant IFN- γ response during early infection (42, 43). Aside from the CD8⁺ and CD4⁺ subsets of T_{RM}, a subset of NK1.1⁺ double negative T memory cells which reside in the lungs also play a role in influenza infection (44). Taken together, these studies and others (45–47) demonstrate that T_{RM} are required for optimal protection. However, unlike T_{RM} in other locations, such as the skin, lung T_{RM} are not maintained for extended periods of time. This gradual loss of lung T_{RM} appears to be the reason for the loss in heterotypic immunity against influenza infection (45, 46, 48). Lung T_{RM} exhibit a transcriptional profile that renders them

susceptible to apoptosis (48). Despite conflicting evidence (49), it appears that maintenance of the lung CD8⁺ T_{RM} populations relies on the continual seeding from circulating CD8⁺ T cells. However, with time, circulating CD8⁺ T cells adopt a transcriptional profile that reduces their capacity to differentiate into T_{RM}. Expanding the CD8⁺ T_{EM} compartment through booster vaccination may circumvent the problem of these time-sensitive transcriptional changes (48). There is also conflicting evidence regarding the requirement of local antigen for the generation of T_{RM} within the lung (48, 50). Continuing to find ways to generate and maintain lung T_{RM} is of great importance for vaccines against pulmonary infections. Intranasal administration of vaccines seems to encourage the development of a strong mucosal immune response (51, 52). Intranasal administration of Live Attenuated Influenza Vaccine (FluMist) in a mouse model induced both CD4⁺ and CD8⁺ T_{RM} that provided a degree of cross-strain protection independent of T_{CM} and antibodies (53). The intranasal administration of a PamCys2 or Adjuplex has demonstrated capacity for producing protective influenza-specific lung CD8⁺ T_{RM} in similar numbers and IFN- γ secreting potential when compared to the natural response to influenza infection (54, 55). Furthermore, a vaccine containing virus-like particles with tandem repeat M2e epitopes generated heterotypic immunity through the induction of antibodies, and protection correlated with IFN- γ -secreting CD8⁺ T_{RM} (56). A Modified Vaccinia Ankara-vectored virus expressing conserved influenza nucleoprotein and matrix protein 1 elicited an IFN- γ secreting CD4⁺ T cell and CD8⁺ T_{RM} response (57). Co-administration of 4-1BBL (CD137 signal) along with an influenza nucleoprotein expressing replication defective adenovirus vector *via* the intranasal route stimulated and boosted a lung CD8⁺ T_{RM} response through the recruitment of circulating T cells (58). Intranasal administration of 4-1BBL may serve as a promising “pull” strategy in systemically primed individuals. Another potential “pull” strategy is the intranasal administration of Fc-fused IL-7. This protocol was used as a pre-treatment before influenza A infection, and demonstrated protective capacities in mice against lethal challenge. It appears that Fc-fused IL-7 recruits polyclonal circulating T cells into the lungs, which subsequently reside in the lung tissue as “T_{RM}-like cells” (59). Intranasal administration of Fc-fused IL-7 after systemic priming may be able to recruit influenza-specific T cells into the lungs, and may be a strategy for inducing lung T_{RM}. An antibody targeted vaccination strategy in which antigens are coupled to monoclonal antibodies against CD103⁺ or DNNGR-1⁺ dendritic cells has also been shown to elicit a protective CD8⁺ T_{RM} response (47, 60).

HUMAN IMMUNODEFICIENCY VIRUS (HIV)

Human immunodeficiency virus is a retrovirus that is transmitted *via* contact with infected blood and other fluids such as semen and vaginal secretions. The virus specifically targets the surface proteins CD4, CXCR4, and CCR5, with the natural progression of disease resulting in the depletion of CD4⁺ T cells. As a consequence, infected individuals are left in an

immunocompromised state referred to as acquired immunodeficiency syndrome (AIDS), which is characterized by fatal opportunistic infections and malignancies. Although the development of therapeutics such as anti-retroviral therapy has reduced the incidence of AIDS, HIV/AIDS continues to contribute significantly to global morbidity and mortality. Evidence shows that CD8⁺ T cells are vital in controlling early infection (61). Studies of human tissue samples have revealed that T_{RM} are generated in response to HIV infection in multiple locations including the gastrointestinal tract and the female reproductive tract (62–65). Furthermore, individuals who appeared to naturally control infection had T_{RM} that were capable of producing the highest polyfunctional immune responses when compared to individuals who did not. However, the T_{RM} population within the HIV-specific CD8⁺ T cell compartment in individuals who controlled infection was under-represented when compared to individuals who were viremic (62). Although not confirmed, this may be due to the higher ability of polyfunctional T_{RM} in these individuals to recruit circulating T cells, thereby only altering the T_{RM} proportion. Similar to other infections in various sites, CD8⁺ T_{RM} in the context of HIV can be sub-divided into two subsets based on the expression of CD103 (62, 63). Analysis of the ectocervical epithelium and menstrual blood revealed that HIV-infected women were more likely to have CD103⁻ T_{RM} when compared to healthy individuals (63, 64). This reduced expression of CD103 may be explained by the HIV-induced depletion of CD4⁺ T cells which appear to be vital in providing help to CD8⁺ T cells for up-regulating CD103 (64). The CD103⁻ populations of the ectocervix resided closer to the basement membrane of the epithelium when compared to their CD103⁺ counterparts. Interestingly, the CD103⁺ population from infected individuals appears to express higher levels of PD-1 (63). In a separate study, adipose PD-1⁺ CD4⁺ T_{RM}, appeared to remain relatively inactive during HIV infection and may serve as a reservoir for HIV (65). As such chronically activated T_{RM} and T_{RM} exposed to immunomodulated environments (such as the adipose tissue) may be unable to elicit a full effector response, favoring the progression of HIV infection. It also appears that HIV has the ability to disrupt CCR5-mediated CD8⁺ T cell migration into the cervical mucosa, thereby impairing the development of T_{RM} populations (66). Regardless, human studies suggest that T_{RM}, especially CD8⁺ T_{RM}, play an important role in combating HIV infection and thus may be valuable targets for vaccine development. Since the most common mode of transmission of HIV is through sexual intercourse, it may be desirable to explore strategies that induce anti-HIV CD8⁺ T_{RM} in the female and male reproductive tract and rectosigmoid epithelium. In a Simian Immunodeficiency Virus model of rhesus macaques, intravenous administration of SIVmac239 Δ *nef* generated a population of CD8⁺ T_{RM} in the vaginal tissue and the gut that participated in protection (67). In a murine model, a mucosal vaccination strategy in which intranasal administration of an influenza-vector expressing the HIV-1 Gag protein p24 followed by an intravaginal booster induced CD8⁺ T_{RM} in the vagina. Antigen stimulation of these CD8⁺ T_{RM} resulted in the recruitment of B cells, natural killer cells, and CD4⁺ T cells (68). While the recruitment of innate

and adaptive immune cells may be beneficial in early viral clearance, the recruitment of CD4⁺ T cells may be detrimental in the context of HIV as they are the target for HIV. Hence, incidental recruitment of CD4⁺ T cells to sites of HIV entry (female reproductive tract and rectum) by prime and pull vaccination strategies may unintentionally increase susceptibility to infection. A micro-needle array delivery system that utilizes a recombinant adenovirus vector containing the HIV-1 protein Gag, has also produced promising results in generating T_{RM}. These HIV-specific T_{RM} were found in the female reproductive tract and respiratory tract of immunized mice and responded to local antigenic stimulation through expansion and production of IFN- γ and granzyme B (69). Using this micro-needle array delivery system as a priming strategy followed by intravaginal delivery of a booster concoction serving as a pull strategy may be an interesting protocol worth exploring.

VACCINIA

Vaccinia is a poxvirus that usually causes a very mild or asymptomatic infection in immunocompetent individuals. Immunity to vaccinia virus also provides sufficient protection against smallpox, which allowed for its eradication following administration of the live vaccinia virus (70). Despite elimination, smallpox remains a priority on the global agenda given the potential for the virus to be used as a biological weapon (71). For this reason and its ability to serve as a vector, vaccinia virus continues to be used in research. Murine models demonstrate that T_{RM} are generated in response to vaccinia and play a significant role in mediating protection against infection (72–76). Dermal-resident $\gamma\delta$ T cells have also been implicated in the immune response against cutaneous vaccinia infection (77). Following skin infection CD8⁺ T cells are recruited independently of CD4⁺ T cells and IFN- γ (72), many of which subsequently assume the T_{RM} phenotype (72, 73, 75, 78, 79) and are capable of initiating potent inflammatory responses upon re-stimulation (79). Of particular interest is the capacity of local vaccinia skin inoculation to globally seed skin tissue even at remote sites with long lasting T_{RM} (72) as well as generating T_{RM} responses in non-related non-lymphoid organs such as the lungs and liver (76). Multiple exposures to cognate viral antigens have also shown to selectively expand T_{RM} (72, 73, 78, 79). In a lung infection model of vaccinia, higher numbers of lung T_{RM} correlated with better protection against subsequent infection as indicated by a rapid reduction in viral loads. T_{RM} seem to expand more rapidly and localize to the infection site as indicated by a 5-ethynyl-2'-deoxyuridine proliferation assay when compared to their circulating counterparts. Depletion of lung CD8⁺ T cells by intranasal administration of α CD8 antibody, resulted in previously protected mice becoming susceptible to infection, indicating that CD8⁺ T_{RM} play a vital role in mediating immunity (74). In another study, parabiosis experiments demonstrated that T_{RM} were exceedingly better at clearing vaccinia virus skin infection than T_{CM} within a shorter timeframe. In fact, it appears that skin T_{RM} can clear vaccinia skin infection even in the absence of neutralizing antibodies and T_{CM} (72). However, vaccinia-specific CD8⁺ skin T_{RM} appear to have an impaired ability to recruit circulating effector cells

during polymicrobial sepsis infection (80). Whether there are other physiologically challenging conditions that impair skin T_{RM} functionality remains largely unexplored. Surprisingly, vaccinia lung infection revealed that not all T_{RM} are equally capable of conferring protection. T_{RM} that resided in the lung interstitium were better positioned to rapidly kill infected lung cells in a contact-dependent manner when compared to T_{RM} situated in association with the tissue vasculature. Furthermore, T_{RM} found within the interstitium, unlike vascular-associated T_{RM}s, were able to up-regulate CD69 expression, potentially indicating an enhanced ability to respond during early infection (74). Investigations of vaccinia infection has also reinforced that epithelial immunization routes, such as skin scarification and intranasal exposure, demonstrate significant efficacy for generating protective T_{RM} responses (72–76, 78). In fact, vaccination *via* skin scarification is capable of protecting against clinical disease (pock lesions of the skin) whereas not all mice vaccinated *via* systemic routes such as intramuscular and intraperitoneal were protected from pock lesions. More astonishingly, mice immunized *via* skin scarification demonstrated greater resistance to disease when challenged *via* a heterologous route (intranasal), compared to mice immunized subcutaneously or intraperitoneally, in spite of generating reduced antibody titers (75). These observations may be attributed to T_{RM}-mediated immunity given the evidence that T_{RM} can be generated in distant tissues after skin scarification (76). Overall, studies that use vaccinia infection models have shed light on the ability of skin scarification to elicit a robust and somewhat unique immune response.

RESPIRATORY SYNCYTIAL VIRUS (RSV)

Respiratory syncytial virus is a common cause of lower respiratory tract infections in children and the elderly. Common reinfection with RSV suggests absence of protective immunity (81). A number of studies have shown the importance of T_{RM} in providing protection against RSV (82–86). An experimental human infection study showed that adults with higher frequencies of RSV-specific CD8⁺ T cells, many of which displayed a T_{RM} phenotype, developed less severe lower respiratory tract symptoms and reduced viral loads. This increase in protection was not correlated with higher numbers of circulating CD8⁺ T cells, suggesting the localization of T_{RM} was vital for mediating immediate protection (82). T_{RM} induction in lung tissue and airway fluid was also demonstrated following intranasal RSV infection in mice. Adoptive transfer of airway lymphocytes from RSV-infected mice into naïve recipients reduced disease burden upon infection challenge, compared to adoptive transfer of airway lymphocytes from sham-infected mice. It was concluded that both airway CD8⁺ and CD4⁺ T cells play a role in protecting against RSV infection and reducing disease severity, respectively (83). However, given that only bulk CD4⁺ or CD8⁺ T cells were transferred, it remains to be investigated if the protective capacity is mediated by airway T_{EM} or T_{RM} cells. In support of the latter, an African green monkey model of RSV infection illustrated that antibody and CD4⁺ T cell responses are unlikely to protect against reinfection. On the contrary, it appears that lung CD8⁺ T cells, of

which up to half displayed a T_{RM} phenotype, were more capable of protecting against secondary infection (84). From the available evidence (82–86), it appears that an ideal RSV vaccine should elicit a CD8⁺ T_{RM} response in the lung. Of note, some experimental RSV vaccines have already shown promising results with regards to T_{RM} generation: intranasal administration of an RSV antigen-expressing murine cytomegalovirus generated an IFN γ - and MIP-1 β -secreting population of T_{RM} (85); co-administration of the TLR9 agonist CpG and an inhibitor of notch signaling (L-685,458) with formalin-inactivated RSV elicited a strong protective T_{RM} response (86); intranasal administration of virus-like particles containing RSV M and M2 proteins as antigen delivery systems has also shown propensity to induce the production of T_{RM} (87); and a dendritic cell-*Listeria monocytogenes* immunization strategy, when administered locally, was able to avoid circulating T cell-induced immunopathology and protect against RSV infection challenge through the generation of T_{RM} (88).

CYTOMEGALOVIRUS (CMV)

Cytomegalovirus establishes life-long latency in many organs including mucosal tissues. It has long been known that CMV infection induces a sustained clonal expansion of specific CD8⁺ T cells, a phenomenon referred to as memory inflation (89). However, only recently has it been explicated that CMV infection promotes the formation of T_{RM} in various mucosal tissues, especially the salivary glands (90–92). Although the CD8⁺ T cell response is vital for the control of CMV infection, the virus-induced downregulation of MHC I on acinar glandular cells of the salivary glands (long-term target tissue of CMV) resulting in the reliance on CD4⁺ T cells for control of lytic replication at this site (93). Surprisingly, salivary gland CD8⁺ T_{RM} were capable of controlling viral replication. It appears that murine CMV is unable to completely inhibit the expression of MHC I on CD8⁺ T_{RM} of the salivary glands, thereby providing an opportunity for these T cells to mediate localized immunity (90). Although it remains unclear whether these T_{RM} inhibit viral replication through effector cytokines or direct cytotoxicity, it certainly appears that salivary gland T_{RM} may inhibit the shedding of CMV, hence reducing the chances of transmission. These mucosal T_{RM} typically form early after infection. However, mucosal seeding continuously occurs through the recruitment and differentiation of circulating populations. As such, the immunodominance of mucosal T_{RM} against CMV changes with time, favoring the TCR repertoire that remains high in circulation (91). T_{RM} have also been found in brain tissue after murine CMV infection (94–96). In the brain, CMV-specific T_{RM} formation seems to be dependent on regulatory T cell (T_{reg}) activity. Furthermore, T_{reg} cells seem to have a suppressive effect on brain T_{RM}'s capacity to produce granzyme B, potentially a precautionary measure to prevent detrimental neuroinflammation (94). From the studies that have dissected the role of T_{RM} in protecting against CMV infection and inhibiting reactivation there seems to be a clear role for these tissue tropic T cells in limiting CMV replication. A number of studies also demonstrate the capacity of CMV to be used as a viral vector in novel vaccines that generate T_{RM}-mediated immunity (85, 91, 97). Manipulating CMV's capacity to induce a robust

CD8⁺ T cell response within mucosal tissues may be a promising avenue for the generation of new vaccines.

LYMPHOCYTIC CHORIOMENINGITIS VIRUS (LCMV)

Lymphocytic choriomeningitis virus, a rodent-borne disease can cause meningoencephalitis in humans (98). While LCMV infection models have been used to study T_{RM} in multiple tissues (99), the protective role of T_{RM} has only been clearly investigated in the brain, thymus, and female reproductive tract. Depletion of circulating T cells or NK cells demonstrated that T_{RM} have the capacity to protect against infection independently of NK cells, T_{CM}, and T_{EM} populations (100, 101). Upon MHC-I-antigen stimulation, LCMV brain T_{RM} displayed effector functions and mediated virus control through IFN- γ release and perforin-mediated cytotoxicity (100). Thymic T_{RM}, when stimulated with gp33, released both IFN- γ and TNF- α , suggesting that T_{RM} at this location may be polyfunctional. It also appears that T cells that took residence in the thymus were more likely to respond to antigen stimulation when compared to their splenic counterparts, further exemplifying the protective nature of these cells (101). Since infection of the thymus can significantly reduce T cell generation due to increased thymocyte deletion and reduced proliferation, it is vital to have protective mechanisms in place that act rapidly to minimize pathogen-induced damage in the thymus. From the available evidence, thymic T_{RM} seem to be capable of adequately fulfilling this task. LCMV infection also induces the production of T_{RM} in various peripheral tissues, such as the lungs, intestines, and female reproductive tract (102–104). While the role of T_{RM} in the lung and intestines following LCMV infection is not well established, it was found that re-activation of CD8⁺ T_{RM} in the female reproductive tract was able to produce a general anti-viral immune response that is almost able to confer sterilizing immunity when challenged with a non-cognate virus (105). This T_{RM} induced antiviral state may be of great interest in the aim to generate vaccines that create heterotypic protection.

VARICELLA ZOSTER VIRUS

Varicella zoster virus, the cause of chicken pox, is an alpha-herpes virus that can establish latency within the dorsal root ganglia. Reactivation of the virus results in a painful disease called shingles. Although vaccines are available against both chicken pox and shingles (106), recent evidence suggests that T_{RM} may be key players in controlling latent infection, a phenomenon that could be exploited to improve current vaccines. One study analyzed skin samples from human donors of varying ages who were serologically confirmed VZV positive. 80–90% of T cells from the sampled tissue expressed CD69, suggesting that the majority of T cells in skin were T_{RM}. IL-2 responses from stimulated VZV-specific T cells demonstrated that host age did not influence the numbers of responsive cells. However, it was found that skin from older donors demonstrated a lesser capacity to mount a clinical response and

decreased CD4⁺ T cell infiltration when challenged with VZV antigen. This correlated with higher proportions of Foxp3⁺ cells. Furthermore, T_{RM} of older skin expressed PD-1 in higher amounts (107). Together, this data suggest that VZV-specific T_{RM} may be suppressed with age. This may be a reason for the high incidence of reactivation of VZV in older individuals. Results from a different study that utilized samples of human trigeminal ganglia suggests that T_{RM} do not seem to play a role in controlling latent infection in the trigeminal ganglia (10). Regardless, further investigation into the role of T_{RM} in controlling latent VZV infection may help to develop therapeutics or vaccines that prevent shingles.

HUMAN PAPILLOMAVIRUS

Human papillomavirus is a sexually transmitted pathogen that generally causes an asymptomatic, self-limiting infection. However, certain subtypes of HPV can cause cancer of the cervix, anus, and oropharynx (108). The routine administration of HPV preventative vaccines has led to a significant reduction in the incidence of infection in many parts of the world. However, immunization of individuals with an established HPV infection has not shown to protect against the progression of HPV-induced lesions into carcinoma. As such, a therapeutic vaccine that is administered by post infection may subvert this problem. Current HPV vaccines rely on the induction of antibodies to neutralize viral particles (109). The potential for generating anti-HPV T_{RM} as a strategy for eliminating previously established HPV infection is yet to be fully explored. One study evaluated the capacity of two adenoviruses (Ad26 and Ad35) that express a fusion of the HPV16 oncoproteins E6 and E7 to elicit a protective response in the cervicovaginal mucosa. Intra-vaginal administration of either vector was able to elicit the generation of CD8⁺ T_{RM} within the cervicovaginal mucosa. Furthermore, systemic priming with Ad35 followed by an intra-vaginal booster immunization of Ad26 induced polyfunctional, E6/E7-specific, cytokine-secreting CD8⁺ T cells within the cervicovaginal mucosa (110, 111). Although it remains to be resolved if protection against established HPV infection causally relies on T_{RM}, this and other studies (111) provide impetus to further explore the intra-vaginal route of administration and the use of viral vectors as strategies for the induction of cervicovaginal T_{RM}.

VIRAL HEPATITIS

Viral hepatitis is an inflammatory disease of the liver that is caused by a range of viruses (112). Two studies, both of which utilized human donor liver tissue and paired blood samples, analyzed the role of T_{RM} in the context of viral hepatitis. One study focused on patients with hepatitis B viral infections (HBV), while the other study included patients with HBV or hepatitis C viral infections. A higher proportion of liver T cells from patients who demonstrated partial control of HBV infection had a T_{RM} phenotype, when compared to healthy controls. Given that the overall numbers of T cells in the liver of healthy and HBV-infected individuals were similar, this threefold increase in T_{RM} numbers appear to be due to an increased

predisposition of T cells to adopt the T_{RM} phenotype in virally infected liver tissue, rather than expansion of pre-existing T_{RM} (113). The numbers of T cells co-expressing CD69 and CD103 increased by fourfold in chronic hepatitis C patients (114). Furthermore, the reciprocal relationship between viral loads and liver T_{RM} numbers indicates that T_{RM} play a vital role in infection control (113). *Ex vivo* stimulation of T_{RM} showed heterogeneous antigen specificity, with a number of HBV antigens being able to initiate effector responses. However, viral envelope peptides seemed to generate the greatest capacity to induce production of IFN γ , TNF α , and IL-2. Analysis of T_{RM} from healthy liver tissue revealed a noticeably reduced expression of granzyme B, when compared to non-resident counter parts. This suggests that hepatic T_{RM} have less cytolytic capacity than circulating T cells (113, 114). However, liver T_{RM} of patients with chronic hepatitis B expressed markedly higher amounts of granzyme B when compared to healthy controls (114). Liver T_{RM} also showed increased expression of the inhibitory molecule PD-1 compared to non-resident T memory cells (113, 114). The downregulation of granzyme B and upregulation of PD-1 in healthy liver tissue may be a precautionary measure intended to prevent immunopathology, given the liver's role in filtering high amounts of antigen draining from the mesenteric circulation. This is of great importance in viral hepatitis infections as immunopathology is largely involved in the progression of viral hepatitis that leads to cirrhosis and hepatocellular cancer. The increased production of granzyme by T_{RM} in CHB patients may be part of the pathogenesis of fulminant hepatitis. Further exploring the role of T_{RM} in protection against viral hepatitis (including hepatitis A, D, and E) and the immunopathology implicated in the progression of the disease may aid in the development of immunomodulatory therapeutics to prevent viral cirrhosis and hepatocellular cancer.

EPSTEIN-BARR VIRUS (EBV)

Epstein-Barr virus is one of the most prominent causes of infectious mononucleosis. After exposure to infected saliva, the virus infects and replicates in B cells and epithelial cells of the new host. Although the clinical disease of glandular fever is usually self-limiting, EBV remains latent in circulating B cells and episodes of reactivation are known to occur. It appears that reactivation of EBV occurs in the lymphoid tissue of the oropharynx, where the virus switches from a latent form into a lytic cycle. Control of infection is mediated by a T cell response against infected B cells (115). EBV-specific CD8⁺ memory T cells localize to the epithelium of the oropharynx (116), where they up-regulate CD69 and CD103 in an IL-15- and TGF- β -dependent fashion (117). CD103⁺ EBV-specific T memory cells found in tonsillar tissue are more sensitive to antigen stimulation and produce a greater effector response when compared to circulating EBV-specific T cells (116). Furthermore, a substantial CD103⁺ T cell population only seems to appear as viral replication and disease tapers (118). Taken together, it appears as though T_{RM} play a crucial role in rapidly controlling viral replication of EBV within the oropharyngeal tissue upon reactivation to prevent full clinical relapse.

VESICULAR STOMATITIS INFECTION (VSV)

Vesicular stomatitis infection is a zoonotic disease that can cause a mild febrile illness in humans (119). Intranasal infection of mice with VSV has shown to produce CD103⁺ CD8⁺ T_{RM} population in the brain (120, 121), as the virus travels along the olfactory bulb to the brain where it causes infection. These brain T_{RM} were found to be functional *in situ*, responding to cognate antigen (120, 121). Staining for effector molecules revealed that many of these T_{RM} cells were positive for granzyme B, suggesting cytolytic abilities. Once removed from the brain parenchyma, these cells appear dysfunctional, suggesting they are highly adapted to the brain microenvironment. Maintenance of this population of T_{RM} appears to be independent of circulating T cells, and BrdU incorporation indicates a slow homeostatic rate of proliferation to sustain the population (120). Interestingly, brain T_{RM} appear to form clusters within specific sites of the brain parenchyma that contain CD4⁺ T cells, perhaps indicating a role for CD4⁺ T cells in the generation and/or maintenance of brain CD8⁺ T_{RM}. These clusters may have formed around sites of previous VSV replication sites, where persisting antigen may be drawing the T_{RM} to these locations. Although, viral RNA could not be detected at these sites (120), this does not exclude the possibility that undetectable levels of antigen may be present at these sites. T_{RM} may also form clusters around local dendritic cells that are still presenting antigen from a previous infection. This hypothesis is supported by the observation that antigen presentation by bone marrow-derived-APCs was able to support CD103 expression by T_{RM} (120).

OTHER VIRUSES

Polyomaviruses are opportunistic pathogens that usually remain latent following infection. However, in immunocompromised individuals, infection can cause multifocal leukoencephalopathy (122). T_{RM} are generated in the context of polyomavirus infection (123–126), and polyomavirus-specific brain CD8⁺ T_{RM} in mice maintain a high TCR affinity for pathogen epitopes. In fact, T_{RM} TCR affinity appears to be higher than the TCR affinity of T cells from the spleen. This observation supports a role of T_{RM} in mediating rapid control of viral replication during reactivation, as high TCR affinity allows for the early detection of low amounts of virus (123). In contradiction to this finding, evidence from another study suggests that lower TCR stimulation increases the generation of brain T_{RM} (125). One way of interpreting these seemingly contradicting observations is that brain T_{RM} initially differentiate from circulating effector T cells with low TCR stimulation capacity, but after taking residence in the brain, undergo functional avidity maturation (127) increasing their ability to respond to antigen. A renal transplant clinical study suggests that renal BK Polyomavirus-specific T_{RM} were rendered incapable of protecting against infection leading to interstitial nephritis, likening these T_{RM} to dysfunctional tumor-infiltrating lymphocytes (126).

Ebola virus causes a form of hemorrhagic fever characterized by intravascular coagulation and maculopapular rash. Although

the natural reservoirs for the virus are thought to be fruit bats, human-to-human transmission can occur when contaminated body fluids breach mucosal barriers or skin. Absence of specific treatment and epidemic potential of the virus highlights the need for a vaccine (128). Aerosol administration of a human parainfluenza virus type 3-vectored vaccine expressing an Ebola envelope glycoprotein was capable of not only eliciting neutralizing antibodies but also a CD103⁺ T cell response in the lungs of macaques. A large proportion of these T_{RM} were polyfunctional, demonstrating positivity for two or more activation markers. Furthermore, a single dose of this vaccine conferred 100% protection against infection challenge (129). Since a large proportion of transmission in the recent Ebola epidemic was through skin contact, vaccination *via* scarification is worth exploring.

Norovirus is a highly infectious virus, and is a common cause of gastroenteritis. Although infection is generally self-limiting, chronic forms have been reported in immunocompromised patients. A clinical study has implicated CD8⁺ T cells resembling T_{RM} in the immune response against norovirus (130). However, a genetically manipulated strain of murine norovirus causing chronic infection revealed that despite a robust and functional T_{RM} response being generated, clearance of the virus was not achieved, likely due to inadequate antigen sensing (131).

THE ROLE OF T_{RM} IN BACTERIAL INFECTIONS

Although there is significantly less literature about T_{RM} in the context of bacterial infections, the evidence largely implies that T_{RM} have a noteworthy role in protecting against pathogenic bacteria. The following section groups bacterial pathogens together depending on their location of primary infection.

BACTERIAL INFECTIONS OF THE LUNGS AND AIRWAYS

Pertussis, also known as whooping cough, is caused by *Bordetella pertussis*, a Gram-negative coccobacillus. Despite high vaccination coverage, whooping cough remains a serious public health concern. T cell responses are critical for immunity against *B. pertussis* (132). While the existing whole-cell pertussis (wP) vaccine is generally associated with a strong Th1 response, immunization with the widely used acellular pertussis (aP) vaccine induces a Th2-dominated humoral response (133). Immunity to the aP vaccine wanes over time compared to wP vaccines (134). This diminished immunity allows for the transmission of *B. pertussis* to susceptible individuals. A recent study reported that following *B. pertussis* infection, IL-17- and IFN- γ -secreting CD4⁺ T_{RM} congregate in the lungs of infected mice where they persisted for 120 days, and expanded up to sixfold upon reinfection. Egress inhibitor FTY720 did not affect the control of bacterial burden during secondary infection, suggesting that T_{RM} were capable of providing immunity irrespective of peripheral T cell recruitment. Bacterial clearance in reinfected mice also correlated with CD4⁺ T_{RM} expansion, with a large portion of cells displaying a Th17 phenotype (135).

Adoptive transfer of lung CD4⁺ T_{RM} from infected mice into naïve hosts conferred protection against *B. pertussis* challenge (135), suggesting that Th17-like CD4⁺ T_{RM} seemed to play a crucial role in long-term immunity. Interestingly, $\gamma\delta$ T cells that express CD69 and CD103, classically known to provide innate-like protection during primary infection, also provided a significant early-release IL-17 response during secondary infection in convalescent mice. However, $\gamma\delta$ T_{RM}, especially V γ 4⁺ $\gamma\delta$ T cells persisted in the lungs of convalescent mice and produced a greater IL-17 response on re-exposure to *B. pertussis* in an antigen-specific manner (136). Therefore, a long-lasting *B. pertussis* vaccine should not only promote the generation of *B. pertussis*-specific CD4⁺ T_{RM} but also $\gamma\delta$ T_{RM}.

Pneumonia is one of the largest infectious causes of mortality in children worldwide (137). The most common cause of community-acquired pneumonia is *Streptococcus pneumoniae*, a Gram-positive polysaccharide-encapsulated bacterium (138). Modern pneumococcal vaccines are polysaccharide based and are thus poorly immunogenic, providing serotype-specific immunity that wanes over time. Although CD4⁺ Th17 responses are considered vital in providing protection against pneumococcal infections, the role of T_{RM} is yet to be fully characterized. Experimental *S. pneumoniae* infection was found to promote the production of heterotypic CD4⁺ T_{RM} of both Th17 and Th1 phenotypes in niches located within pneumonia-affected lobes of the lung. It was also observed that immunity was restricted to pathogen-experienced tissue, suggesting that T_{RM} reside in primary infection sites, rather than providing immunosurveillance throughout the entire respiratory mucosa. Despite spatial restriction, T_{RM} provided superior protection to the local tissue when compared to systemic immune responses elicited by antigen-specific CD4⁺ T_{CM}. Neither adoptive transfer of splenic CD4⁺ T cells from infected mice into naïve recipients, nor inhibiting lung translocation of circulating CD4⁺ T cells with FTY720 in pathogen-experienced mice, had a significant effect on protection against pneumococcal infection challenge. Therefore, protective immunity against bacterial pneumonia is likely due to the aggregation of CD4⁺ T_{RM} in susceptible tissues (139). Interestingly, combining whole virion influenza and whole cell pneumococcal vaccine also promoted the generation of lung CD4⁺ T_{RM}. It is likely that these T_{RM}, in combination with the accompanying high antibody titers elicited by the combined vaccine, played a role in providing protection against pneumococcal-influenza co-infection (140). Overall CD4⁺ T_{RM} may play a role in the generation of naturally acquired immunity against pneumococcal infections, and should be considered in the development of heterotypic pneumococcal vaccines.

Mycobacterium tuberculosis (*Mtb*), an acid-fast staining intracellular bacterium, is the causative agent of tuberculosis (TB). The deadly infection can present as pulmonary, as well as extra pulmonary disease (141). Currently, *Bacillus Calmette-Guérin* (BCG) is the only licensed vaccine against TB, and prevents dissemination in children. However, BCG does not provide strong enough immunity against pulmonary TB in adults, therefore, allowing transmission (142). Immune control of *Mtb* infection largely relies on the production of IFN γ by CD4⁺ T cells, which enhances macrophage killing of persisting intracellular *Mtb* and

leads to the formation of granulomas around sites of bacterial replication (141). A clinical study revealed that individuals previously exposed to tuberculosis were likely to have a population of lung-resident Th1 effector memory cells that released IFN- γ in response to *Mtb* antigen re-exposure (143). However, the delay in activation and recruitment of TB-specific T cells to the lungs during primary infection allowed for *Mtb* to proliferate, resulting in a high bacterial burden. The importance of airway-residing memory T cells (then called airway luminal cells) in mediating protection against TB has been described well before the dawn of T_{RM} (144–146). However, these cells most likely represent the same cell type. Lung T_{RM} induced by mucosal vaccination have shown to be effective in limiting the early control of bacterial replication (147). Despite the defined role of CD4⁺ T cells in controlling TB, recent evidence from vaccine studies suggest that CD8⁺ lung T_{RM} also play an important role in protection against *Mtb* (148, 149). Only mucosal administration of BCG led to the generation of airway T_{RM} that produce higher levels of pro-inflammatory cytokines, including IFN- γ than CD8⁺ T_{EM}. Furthermore, adoptive transfer of sorted airway CD8⁺ T_{RM} from BCG-vaccinated mice demonstrated enhanced protection against *Mtb* challenge in recipient mice. Transfer of CD8⁺ T_{RM} decreased the numbers of alveolar macrophages, while increasing the number of CD4⁺ T cells and B cells in the infected lung tissues (148). It was hypothesized that CD8⁺ T_{RM} kill *Mtb*-infected alveolar macrophages, thereby depleting intracellular reservoirs of the bacteria and limiting the entry into the lung parenchyma (148). Likewise, the viral-vectored vaccines SeV85AB and AdAg85A, administered *via* the intranasal route have also shown to elicit an immune response that favors the production of CD8⁺ rather than CD4⁺ T_{RM} (149, 150). In a rhesus monkey model, a cytomegalovirus vector delivering a range of *Mtb* antigens (RhCMV/TB) provided significant protection against tuberculosis, presumably through its ability to generate and maintain pathogen-specific CD4⁺ and CD8⁺ circulating and more importantly resident memory T cells that selectively express VLA-1 (151). Finally, aerosol vaccination with an attenuated *Mtb* strain lacking *sigH* not only led to an enormous influx of T cells expressing CD69 into the lung airways (likely to include T_{RM}), but also to a significant long-term protection against virulent *Mtb* challenge (152). Collectively, these studies indicate that rationally designed TB vaccines should generate immune responses that prevent the establishment of infection and/or provide sterilizing immunity by inducing both lung CD4⁺ T_{RM} and CD8⁺ T_{RM} in the lungs.

BACTERIAL INFECTIONS OF THE UROGENITAL TRACT

A number of bacteria cause disease of the reproductive tract and urinary system. One such example is *Ct*, an obligate intracellular bacterium that causes infections of the genitals and eyes. It is the leading cause of infectious blindness worldwide, and can cause infertility when sexually transmitted (153). According to clinical evidence, it appears that spontaneous clearance of clinical infection correlates with at least partial protection against *C. trachomatis* through the production of INF- γ -secreting cells

such as CD4⁺ Th1 cells. However, IFN- γ responses alone do not seem to provide complete protection. It has also been documented that B cell-antibody responses are involved in immunity, especially against secondary infection (154–156). Importantly, intraepithelial CD8⁺ lymphocytes and MLCs composed of B cells and CD4⁺ T cells border the vaginal and uterine tract, respectively in pathogen-experienced tissue. These immunocyte structures hinder *C. trachomatis* from replicating and establishing a clinical infection (157). Optimal protection against *Chlamydia* requires both the recruitment of T_{CM} and the presence of T_{RM} within the urogenital tract (158, 159). It is likely that protective immunity occurs in response to chronic or repeated infection, which leads to the seeding of T_{RM} throughout the epithelial surface (160). A vaccine composed of *Chlamydia* major outer membrane protein and ISOCMATRIX adjuvant was able to provide enough protection to prevent the sexual transmission of *C. trachomatis*, however, was not capable of providing complete immunity. This may be attributed to the inability of the vaccine to generate a large enough T_{RM} population, underscoring the essential role of T_{RM} in *Chlamydia* infection (159). In a separate study, mice were either inoculated with infectious *C. trachomatis* or UV-inactivated *C. trachomatis* (UV-*Ct*). Mice infected with the infectious form demonstrated capacity to control future infections better than naïve controls, which may be attributable to the production of both *Chlamydia*-specific T_{CM} and T_{RM} populations. However, the group of mice inoculated with UV-*Ct* suffered higher bacterial burdens when compared to naïve controls. This data in conjunction with the generation of *de novo Ct*-specific T_{reg} suggest that a tolerogenic immune response occurred in these mice. On the contrary, intra-uterine administration of UV-*Ct* conjugated with charge-switching synthetic adjuvant peptides (UV-*Ct*-cSAP) conferred a superior protection to *Ct* in both conventional and humanized mice. The rapid clearance of *Ct* in UV-*Ct*-cSAP-vaccinated mice has been attributed to the immediate release of IFN- γ by mucosal T_{RM} (158). Taken together, the ideal vaccine against *Chlamydia* should promote the generation of local MLC, T_{CM}, and T_{RM} in the epithelium, even though partial protection appears to be sufficient to prevent disease transmission.

BACTERIAL INFECTIONS OF THE GASTROINTESTINAL TRACT

Gastrointestinal infections are generally acquired through ingestion of contaminated food or water. These bacteria may remain in the gut, or may disseminate to other parts of the body causing systemic disease (161). Targeted induction of T_{RM} along the gastrointestinal epithelium could enhance protection against these pathogens. *Listeria monocytogenes*, a food-borne Gram-positive coccobacillus, is of particular concern in immunocompromised and pregnant individuals, and can cause meningitis and stillbirth (162). Its capacity to replicate within host cells facilitates immune evasion. Thus, protection against *L. monocytogenes* is largely dependent on cell-mediated immunity (163). First observed in 1981 as a distinct population of long-lived T memory cells “positioned” in tissue following listeriosis (164), a more recent study highlighted the role of intestinal CD8⁺ T_{RM} in mediating

immunity against *L. monocytogenes* following oral infection. In fact, blockage of integrin $\alpha_4\beta_7$ prevented the formation of these intestinal TGF- β -dependent T_{RM} resulting in diminished protection upon re-challenge (165). Revealed by multi-photon dynamic microscopy, a population of V γ 4⁺ $\gamma\delta$ T_{RM} was found within the mesenteric lymph nodes in response to *L. monocytogenes* infection, which remained largely stationary under homeostatic conditions. However, upon re-challenge, activation of these cells resulted in organized clusters around bacterial replication foci where they released IL-17 and subsequently, the recruitment of neutrophils to facilitate bacterial elimination. Similarly to $\gamma\delta$ T_{RM} function seen in *B. pertussis* infection (136), neutralization of IL-17 hindered bacterial clearance, highlighting the importance of early IL-17 release by $\gamma\delta$ T_{RM} (166).

Yersinia pseudotuberculosis (*Yptb*), a food-borne pathogen causing of Far East scarlet-like fever, is a Gram-negative bacterium responsible for gastroenteritis, mesenteric lymphadenitis, and can clinically mimic acute appendicitis (167). A *Yptb* oral infection mouse model showed a robust CD8⁺ T cell response in the intestines including a population of *Yptb*-specific CD103⁺ CD8⁺ T_{RM} uniformly distributed throughout the intestine, while CD103⁻ T_{RM} formed around sites of primary infection where they carried out effector functions (168). Although found in antigen-rich areas, their development is independent of local antigen stimulation (168). The development of T_{RM} populations in the intestine seems to rely on inflammatory signals from the site of infection rather than antigens (169). Production of IFN- β and IL-12 from intestinal macrophages effectively suppresses TGF- β -mediated CD103 expression thereby leading to the development of CD69⁺ CD103⁻ T_{RM} population in mice during *Yptb* infection. This data suggest a central role for inflammatory monocytes in the differentiation and maintenance of different CD8⁺ T_{RM} populations to achieve optimal protection against intestinal infections. Additionally, this study raises the question as to whether CD103 is necessary for residence within the intestinal tissue, or whether it negatively regulates T_{RM} capacity to migrate within their residential tissues.

Salmonella spp. is a group of Gram-negative bacilli that is a common cause of gastrointestinal infections responsible for “food poisoning.” Transmitted orally, this heterogeneous group of bacteria contains typhoid or enteric-fever causing serovars that can be potentially fatal to humans (170). Current vaccines against *Salmonella* are poorly immunogenic and risk disease in immunocompromised individuals (171). An effective vaccine that prevents gastrointestinal infection is much needed to prevent outbreaks of salmonellosis. Subcutaneous co-administration of *Salmonella* SseB and flagellin has shown to provide protection against systemic disease in mice. However, parabiosis studies suggest that this protection can be transferred *via* the circulation, diminishing the role of T_{RM} in the observed immunity (172). Nevertheless, it may be beneficial to assess the capacity of this vaccine and others to protect against gastrointestinal infection by oral administration. However, the barriers of oral tolerance and destruction of vaccine components by digestive enzymes and chemicals must be overcome in order to develop oral vaccines.

In summary, T_{RM} responses in bacterial infections appear to be more diverse compared to viral infections, an observation that

may be attributed to the varying locations of bacterial replication (intracellular versus extracellular), the more complex lifestyles and the presence or more sophisticated immune evasion mechanisms. Future studies should assess the role of T_{RM} in the natural immune response to other bacterial infections.

THE ROLE OF T_{RM} IN PARASITIC (PROTOZOA AND HELMINTHS) INFECTIONS

Protozoa are unicellular organisms that are of great importance to human health. Most prevalent in tropical regions of the world, protozoan infections are difficult to treat due to their complex life cycles and their ability to evade host immune responses through antigenic variation, residence within various intracellular compartments, and their capacity to assume protective forms such as cysts (173, 174). At this juncture, our collective understanding of T_{RM} responses to protozoan infections remains relatively deficient. However, studies have shown that T_{RM} play a significant role in protecting against a few protozoan species.

Malaria, the most prevalent protozoan infection of humans, is caused by five species of *Plasmodium*. Transmitted by the bite of an infected female *Anopheles* mosquito, *Plasmodium* parasites enter the circulation and take residence inside erythrocytes during part of their complex life cycle. Natural immunity to *Plasmodium* infection involves a mixture of humoral, CD4⁺, and CD8⁺ T cell responses (175). However, liver T_{RM} have emerged as a promising target for protecting against malaria (176). Unlike T_{RM} of the epithelium, such as the lungs, intestines, and skin, liver-T_{RM} appear to reside in sinusoids (the blood vessels of the liver), rather than the parenchymal tissue (177–179). The heavily fenestrated architecture of these blood vessels and the distinct slow flow rate of blood allows for T_{RM} to traverse through the organ without being dispatched into circulation. Furthermore, liver sinusoids provide a prime niche for close interaction of T_{RM} and antigen presenting cells, such as Kupffer cells and dendritic cells. This allows for the rapid detection of antigen. Each hepatocyte is also in close association with a sinusoid, thereby providing easy access to liver T_{RM} for assessment of surface antigen presentation (177). Intravital imaging revealed that these T_{RM} traversed around 10 μm per minute and, as reported in HSV-1 infection of skin, T_{RM} assume an amoeboid form, extending dendrites to survey the liver for antigens (2). Rather than relying on CD103-αE integrin interactions for maintaining tissue residence, liver T_{RM} appear to utilize the adhesion molecule LFA-1 (3). A rhesus monkey *P. knowlesi* infection model that assessed sporozoite immunization demonstrated capacity for generating liver T_{RM}. These T_{RM} appear to be protective as their depletion resulted in the loss of immunity (1). Experiments with radiation-attenuated sporozoites also support the notion that inducing high numbers of liver T_{RM} can afford protection against malaria. In this study, a “prime-and-trap” strategy was used in which primed T cells from the spleen were drawn to the liver using a recombinant adeno-associated virus that infected hepatocytes and

subsequently caused them to express *Plasmodium* antigen. The immunity generated by this strategy was attributed to the increased numbers of CD8⁺ liver T_{RM} (2). The emergence of liver T_{RM} as a potential target for pre-erythrocytic malaria vaccines warrants further research.

Leishmaniasis is a heterogeneous vector-borne disease that is caused by an intracellular protozoa parasite. There are over 20 known *leishmania* species, all of which are transmitted by bites from infected female *Phlebotomine* sandflies. Clinical disease presents in three main forms: cutaneous, mucocutaneous, and visceral. Subjugation of *Leishmania* parasites relies on the establishment of IFN-γ-producing CD4⁺ Th1 cells (180). While it is widely known that clearance of primary infection can lead to protective immunity, the effector response that leads to protection remains unclear. It has, however, become apparent that T_{RM} play a crucial role in providing such protection (181–183). *L. major* infection models illustrated that following infection, long-lived T_{RM} are rapidly fabricated and seeded universally throughout the skin, as they can be detected in tissue far away from the primary site of infection (181). It was previously believed that these T_{RM} provided immunity by rapidly recruiting circulating effector T cells. However, more recent studies suggest that the recruitment of circulating T cells may not be as important as previously thought, as FTY720 and αCXCR3-treated mice re-challenged with *L. major* showed minimal difference in early parasite control (182, 183). Furthermore, parabiosis studies demonstrated that *Leishmania*-specific circulating T cells alone provide little or no protection during early infection. Data exemplifies that CD4⁺ T_{RM} are rather likely to provide immunity by eliciting a delayed-type hypersensitivity response. Early immunity is attributable to the capacity of T_{RM} to rapidly recruit reactive oxygen species/nitric oxide producing inflammatory monocytes to control parasite burden (182). Liver T_{RM} have also been implicated in the immune response against *Leishmania*. The recombinant proteins LirCyp1 and LirSOD of *L. infantum* appear to be good candidates for promoting the expansion of liver memory T cells (184). No current vaccine exists for this potentially fatal disease. Together, these data suggest that Leishmaniasis vaccines should be tailored to generate T_{RM} to provide heterotypic protection against the many species that cause disease.

Toxoplasma gondii, the causative agent of toxoplasmosis, is an intracellular protozoan that is generally acquired through contaminated food. In humans, *T. gondii* can form persistent cysts in multiple tissues (185). In both acute and chronic infection, cell-mediated immunity and effector cytokines play vital roles in limiting the progression of disease (186). Mice deficient in TNF-α suffer from increased pathology, and IFN-γ production in the brain stimulates microglia and astrocytes to inhibit protozoan proliferation. In a chronic infection model of *T. gondii*, CD103⁺ CD8⁺ T_{RM} established in the brain produced a more robust IFN-γ and TNF-α response when compared to CD103⁻ T cell subsets (187). It appears that brain T_{RM} provide superior protection against *T. gondii* infection of the central nervous system when compared to CD8⁺ T_{EM} and T_{CM}. During *T. gondii* and *Y. pseudotuberculosis* infection T_{RM} also seem to

accumulate in white adipose tissue in what appears to be a depot of protective memory cells (188).

Helminthic infections are highly prevalent around the world. Although most infections are not fatal, they account for a large proportion of disease burden, causing secondary conditions, such as anemia and malnutrition. Immunity against helminthic infection is largely mediated by the Th2 effector arm of the adaptive immune system (189). The role of T_{RM} in protecting against helminthic infections, however, has only been explored recently in two species: *Heligmosomoides polygyrus* and *Nippostrongylus brasiliensis* (190, 191). While neither of these species are human pathogens, they provide analogous models to gastrointestinal helminthic infections and *Necator americanus* infection in humans, respectively (192, 193). Adoptive transfer of peritoneal-cavity CD4⁺ T_{RM} from convalescent mice into naïve mice prior to *H. polygyrus* infection challenge, has demonstrated that peritoneal-cavity derived CD4⁺ T_{RM} are capable of hindering the reproductive capacity of female worms without reducing worm burden (190). This phenomenon provides new insight into what appears to be a unique interaction between T_{RM} and pathogen. A different study that used a *N. brasiliensis* model demonstrated that even a small number of lung-interstitial T_{RM} were capable of providing protective immunity. This was confirmed as cognate mice treated with FTY720 and lymphotoxin beta-receptor fusion protein (which causes lymphopenia) were able to clear secondary infection, suggesting that circulating T cells are not necessary to mount a protective secondary response (191). In spite of the lack of knowledge surrounding the interaction between T_{RM} and helminths, there is a clear role for this subset of T cells in worm infections that needs to be explored further.

THE ROLE OF T_{RM} IN FUNGAL INFECTIONS

Typically, fungal infections are less frequent compared to viral and bacterial diseases. However, due to the increasing use of immunomodulatory drugs for cancer and organ transplant patients, the increasing incidence of mycosis is of clinical importance (194). T_{RM} responses are least studied in the context of fungal infections. In fact, only one fungus appears to have been used in T_{RM} studies.

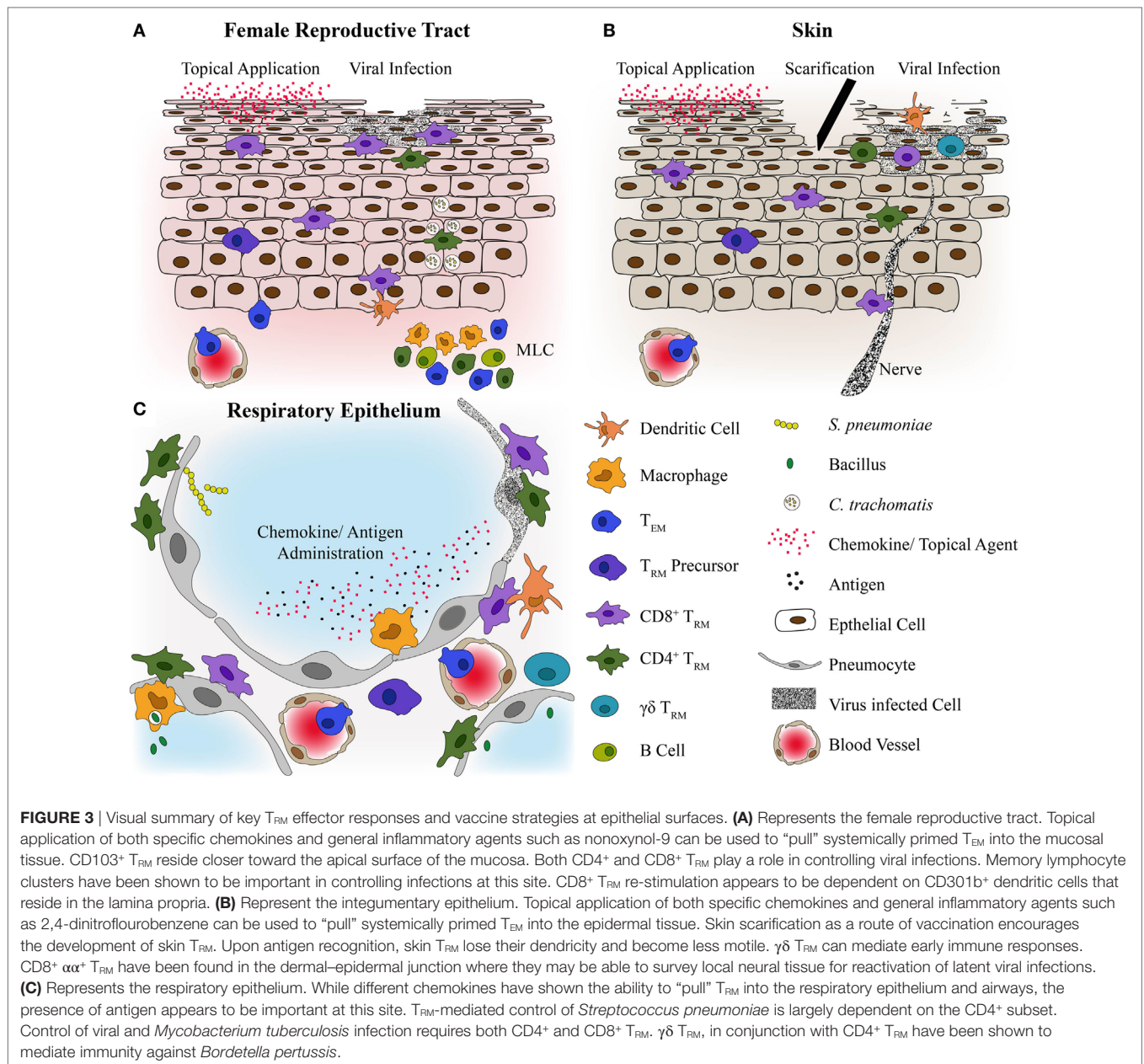
Candida albicans is a dimorphic yeast and opportunistic pathogen. Although it forms part of the normal commensal biome of humans, it can cause infections known as candidiasis especially in immunocompromised individuals (195). Skin and tongue-resident CD4⁺ IL-17-producing T_{RM} can provide effective protection against *C. albicans* (196, 197). Murine skin and oral infection models demonstrated that during early infection, $\gamma\delta$ T cells release IL-17 in response to *C. albicans* invasion (196, 197). In skin, by day 7 post-infection, the vast majority of IL-17-producing cells are of the Th17 phenotype. Eventually, the T cells at the site of initial infection upregulate CD103 and CD69 suggesting they assume the CD4⁺ T_{RM} phenotype between 30 and 90 days post infection. During this time, the cells first become less motile, eventually “sessile” and localize to the papillary

dermis. However, upon reinfection, these T_{RM} were capable of rapidly clearing infection and appear to be superior at doing so than circulating T_{EM}. It was also reported that *C. albicans*-specific Th17 cells were found in high numbers in normal human skin (196), and that low doses of *C. albicans* antigen exposure stimulates the production of regulatory skin T_{RM} that substantially suppress the activity of skin T_{EM} (198). This may be attributed to the widespread presence of *C. albicans* in human tissue. Resident memory Treg cells may play a protective role in preventing a hyper-inflammatory response to benign *C. albicans* antigen exposure. Although the development of a vaccine against *C. albicans* is not of vital importance, these studies provide an initial insight into understanding T_{RM} responses to fungal infections. Other fungal infections that would be of interest include tinea, cryptococcosis, and aspergillosis.

DISCUSSION

The discovery of T_{RM} has enhanced the possibility to develop new and improved vaccines. From the available literature, it appears that the most important factor for generating T_{RM} is to match the route of vaccination to the route of pathogen entry. In general, these are the mucosal and epithelial barriers that provide the first line of defense against pathogens: the respiratory, gastrointestinal, urogenital mucosa, and integumentary epithelium (Figure 3). Thus, the long-standing method of administering vaccines parenterally may be less effective at conferring optimal protection when compared to the novel mucosal and epithelial vaccine strategies highlighted throughout this review. The “prime and pull” method in which a parenteral vaccine is administered (prime) and an inflammatory agent is applied at a later time point to the desired peripheral tissue (pull) has also proven itself to be an effective vaccine strategy for generating T_{RM}. The combination of mucosal vaccination and “pull” strategies may be an avenue worth exploring in future experiments. Another promising vaccine strategy is the use of viral-vectored vaccines. Regardless, it is also imperative to keep in mind the balance that these tissues must constantly strike in inducing a tolerogenic versus effector immune response to antigens, given their dual function in both their physiological roles (respiration, digestion, reproduction, etc.) and in serving as barriers against infection. Additionally, it will be important to consider the local cytokine milieu that influences T_{RM} generation (199). Generating memory T cells in peripheral tissues with cytolytic effector functions and the capacity to recruit inflammatory cells may pose the risk of inducing a hyper-inflammatory state leading to immunopathology. However, the natural persistence of T_{RM} in most peripheral tissues for extended periods of time under homeostatic conditions implies that mechanisms are in place to regulate T_{RM} responses. Developing a greater understanding of these mechanisms is vital in creating safe T_{RM}-based vaccines.

A very appealing aspect of T_{RM}-based vaccines is that it may be possible to generate heterotypic protection, as shown by studies using influenza infection models. This is vital for protecting against a range of rapidly mutating pathogens, such as HIV, as well as infectious diseases such as leishmaniasis that are caused



by heterogeneous pathogens. Furthermore, the promptitude with which T_{RM} mediate immune responses is also of great interest when generating protection against infections such as tuberculosis that are capable of establishing latent infections. In order to achieve immediate T_{RM} protection, it appears that there must be a minimal density of T_{RM} within peripheral tissues to ensure pathogens are identified and eliminated in a timely manner. This may pose a challenge in developing T_{RM}-based vaccines as sufficient numbers of T_{RM} need to be generated and maintained evenly throughout infection-susceptible tissues. The spatial capacity in non-lymphoid tissue to accommodate for T_{RM} may be limited, and thus establishing the capacity of different tissues has as well as determining the minimum threshold of T_{RM} needed to provide protection is much needed.

CONCLUSION

In summary, the findings of this review largely accentuate the importance of T_{RM} in protecting against a range of pathogens. Their localization to sites prone to infection appears to give T_{RM} an enhanced capacity to mount swifter immune responses when compared to circulating memory T cells. Previous vaccine development has been largely centered on the generation of systemic memory response, which at times has shown to be ineffective. The capacity to form tissue-specific immunity through T_{RM} may shape vaccines of the future. Continuing to foster the growing pool of knowledge about T_{RM} will help to guide the field of T_{RM} vaccinology and may lead to the generation of new and more effective vaccines which may help to reduce the incidence of many infectious diseases.

AUTHOR CONTRIBUTIONS

VM performed the literature search and conducted extraction of data from relevant studies. AK, HS, and SN critically reviewed the literature search. VM and AK wrote the manuscript. All coauthors read and approved the final version of the manuscript.

REFERENCES

- Mueller SN, Mackay LK. Tissue-resident memory T cells: local specialists in immune defence. *Nat Rev Immunol* (2015) 16:79. doi:10.1038/nri.2015.3
- Clark RA. Resident memory T cells in human health and disease. *Sci Transl Med* (2015) 7(269):269rv1. doi:10.1126/scitranslmed.3010641
- Gebhardt T, Mackay LK. Local immunity by tissue-resident CD8⁺ memory T cells. *Front Immunol* (2012) 3:340. doi:10.3389/fimmu.2012.00340
- Schenkel Jason M, Masopust D. Tissue-resident memory T cells. *Immunity* (2014) 41(6):886–97. doi:10.1016/j.immuni.2014.12.007
- Kim S-H, Jang Y-S. The development of mucosal vaccines for both mucosal and systemic immune induction and the roles played by adjuvants. *Clin Exp Vaccine Res* (2017) 6(1):15–21. doi:10.7774/cevr.2017.6.1.15
- Azegami T, Yuki Y, Kiyono H. Challenges in mucosal vaccines for the control of infectious diseases. *Int Immunol* (2014) 26(9):517–28. doi:10.1093/intimm/dxu063
- Shamseer L, Moher D, Clarke M, Ghersi D, Liberati A, Petticrew M, et al. Preferred reporting items for systematic review and meta-analysis protocols (PRISMA-P) 2015: elaboration and explanation. *BMJ* (2015) 349:g7647. doi:10.1136/bmj.g7647
- Lafferty WE, Coombs RW, Benedetti J, Critchlow C, Corey L. Recurrences after oral and genital herpes simplex virus infection. Influence of site of infection and viral type. *N Engl J Med* (1987) 316(23):1444–9. doi:10.1056/NEJM198706043162304
- Lafferty WE, Downey L, Celum C, Wald A. Herpes simplex virus type 1 as a cause of genital herpes: impact on surveillance and prevention. *J Infect Dis* (2000) 181(4):1454–7. doi:10.1086/315395
- Verjans GM, Hintzen RQ, van Dun JM, Poot A, Milikan JC, Laman JD, et al. Selective retention of herpes simplex virus-specific T cells in latently infected human trigeminal ganglia. *Proc Natl Acad Sci U S A* (2007) 104(9):3496–501. doi:10.1073/pnas.0610847104
- Gebhardt T, Wakim LM, Eidsmo L, Reading PC, Heath WR, Carbone FR. Memory T cells in nonlymphoid tissue that provide enhanced local immunity during infection with herpes simplex virus. *Nat Immunol* (2009) 10(5):524–30. doi:10.1038/ni.1718
- Davies B, Prier JE, Jones CM, Gebhardt T, Carbone FR, Mackay LK. Cutting edge: tissue-resident memory T cells generated by multiple immunizations or localized deposition provide enhanced immunity. *J Immunol* (2017) 198(6):2233–7. doi:10.4049/jimmunol.1601367
- Ariotti S, Beltman JB, Chodaczek G, Hoekstra ME, Van Beek AE, Gomez-Eerland R, et al. Tissue-resident memory CD8⁺ T cells continuously patrol skin epithelia to quickly recognize local antigen. *Proc Natl Acad Sci U S A* (2012) 109(48):19739–44. doi:10.1073/pnas.1208927109
- Himmelein S, St Leger AJ, Knickelbein JE, Rowe A, Freeman ML, Hendricks RL. Circulating herpes simplex type 1 (HSV-1)-specific CD8⁺ T cells do not access HSV-1 latently infected trigeminal ganglia. *Herpesviridae* (2011) 2(1):5. doi:10.1186/2042-4280-2-5
- Mintern JD, Guillonnet C, Carbone FR, Doherty PC, Turner SJ. Cutting edge: tissue-resident memory CTL down-regulate cytolytic molecule expression following virus clearance. *J Immunol* (2007) 179(11):7220–4. doi:10.4049/jimmunol.179.11.7220
- Menendez CM, Jinkins JK, Carr DJ. Resident T cells are unable to control herpes simplex virus-1 activity in the brain ependymal region during latency. *J Immunol* (2016) 197(4):1262–75. doi:10.4049/jimmunol.1600207
- Park SL, Zaid A, Hor JL, Christo SN, Prier JE, Davies B, et al. Local proliferation maintains a stable pool of tissue-resident memory T cells after antiviral recall responses. *Nat Immunol* (2018) 19:183–91. doi:10.1038/s41590-017-0027-5
- Khan AA, Srivastava R, Chentoufi AA, Kritzer E, Chilukuri S, Garg S, et al. Bolstering the number and function of HSV-1-specific CD8⁺ effector memory T cells and tissue-resident memory T cells in latently infected trigeminal ganglia reduces recurrent ocular herpes infection and disease. *J Immunol* (2017) 199(1):186–203. doi:10.4049/jimmunol.1700145
- Mackay LK, Stock AT, Ma JZ, Jones CM, Kent SJ, Mueller SN, et al. Long-lived epithelial immunity by tissue-resident memory T (TRM) cells in the absence of persisting local antigen presentation. *Proc Natl Acad Sci U S A* (2012) 109(18):7037–42. doi:10.1073/pnas.1202288109
- Srivastava R, Khan AA, Chilukuri S, Syed SA, Tran TT, Furness J, et al. CXCL10/CXCR3- dependent mobilization of herpes simplex virus-specific CD8⁺ TEM and CD8⁺ TRM cells within infected tissues allows efficient protection against recurrent herpesvirus infection and disease. *J Virol* (2017) 91(14):e00278–17. doi:10.1128/JVI.00278-17
- Gebhardt T, Whitney PG, Zaid A, Mackay LK, Brooks AG, Heath WR, et al. Differential patterns of peripheral migration by memory CD4⁺ and CD8⁺ T cells. *Nature* (2011) 477(7363):216–9. doi:10.1038/nature10339
- Menendez CM, Carr DJ. Herpes simplex virus-1 infects the olfactory bulb shortly following ocular infection and exhibits a long-term inflammatory profile in the form of effector and HSV-1-specific T cells. *J Neuroinflammation* (2017) 14:124. doi:10.1186/s12974-017-0903-9
- Posavad CM, Zhao L, Dong L, Jin L, Stevens CE, Magaret AS, et al. Enrichment of herpes simplex virus type 2 (HSV-2) reactive mucosal T cells in the human female genital tract. *Mucosal Immunol* (2017) 10(5):1259–69. doi:10.1038/mi.2016.118
- Zhu J, Peng T, Johnston C, Phasouk K, Kask AS, Klock A, et al. Immune surveillance by CD8 α ⁺ skin-resident T cells in human herpes virus infection. *Nature* (2013) 497(7450):494–7. doi:10.1038/nature12110
- Shin H, Iwasaki A. A vaccine strategy that protects against genital herpes by establishing local memory T cells. *Nature* (2012) 491(7424):463–7. doi:10.1038/nature11522
- Shin H, Kumamoto Y, Gopinath S, Iwasaki A. CD301b⁺ dendritic cells stimulate tissue-resident memory CD8⁺ T cells to protect against genital HSV-2. *Nat Commun* (2016) 7:13346. doi:10.1038/ncomms13346
- Cuburu N, Wang KN, Goodman KN, Pang YY, Thompson CD, Lowy DR, et al. Topical Herpes Simplex Virus 2 (HSV-2) vaccination with human papillomavirus vectors expressing gB/gD ectodomains induces genital-tissue-resident memory CD8⁺ T cells and reduces genital disease and viral shedding after HSV-2 challenge. *J Virol* (2015) 89(1):83–96. doi:10.1128/JVI.02380-14
- Patricia PL, Todorov G, Pham TT, Nesburn A, Bahraoui E, BenMohamed L. Laser adjuvant-assisted peptide vaccine promotes skin mobilization of dendritic cells and enhances protective CD8⁺ T EM and T RM cell responses against herpes infection and disease. *J Virol* (2018) 92:JVI.2156–2117. doi:10.1128/JVI.02156-17
- Iijima N, Iwasaki A. T cell memory. A local macrophage chemokine network sustains protective tissue-resident memory CD4⁺ T cells. *Science* (2014) 346(6205):93–8. doi:10.1126/science.1257530
- Bouvier NM, Palese P. The biology of influenza viruses. *Vaccine* (2008) 26(Suppl 4):D49–53. doi:10.1016/j.vaccine.2008.07.039
- Soema PC, Kompier R, Amorij JB, Kersten GF. Current and next generation influenza vaccines: formulation and production strategies. *Eur J Pharm Biopharm* (2015) 94:251–63. doi:10.1016/j.ejpb.2015.05.023
- Pizzolla A, Nguyen THO, Smith JM, Brooks AG, Kedzieska K, Heath WR, et al. Resident memory CD8⁺ T cells in the upper respiratory tract prevent pulmonary influenza virus infection. *Sci Immunol* (2017) 2(12):02. doi:10.1126/sciimmunol.aam6970

ACKNOWLEDGMENTS

This work was supported by NHMRC grant APP1120808 and NHMRC Career Development Fellowship APP1140709 to AK. SN was supported by a Children's Hospital Foundation Early Career Fellowship (50197). We thank Saparna Pai for critically reviewing the manuscript.

33. Purwar R, Campbell J, Murphy G, Richards WG, Clark RA, Kupper TS. Resident memory T cells (TRM) are abundant in human lung: diversity, function, and antigen specificity. *PLoS One* (2011) 6(1):e16245. doi:10.1371/journal.pone.0016245
34. Pizzolla A, Nguyen TH, Sant S, Jaffar J, Loudovaris T, Mannering SI, et al. Influenza-specific lung-resident memory T cells are proliferative and poly-functional and maintain diverse TCR profiles. *J Clin Invest* (2018) 128(2):721–33. doi:10.1172/JCI96957
35. Quinones-Parra SM, Clemens EB, Wang ZF, Croom HA, Kedzierski L, McVernon J, et al. A role of influenza virus exposure history in determining pandemic susceptibility and CD8(+) T cell responses. *J Virol* (2016) 90(15):6936–47. doi:10.1128/JVI.00349-16
36. Pichyangkul S, Yongvanitchit K, Limsalakpetch A, Kum-Arb U, Im-Erbsin R, Boonnak K, et al. Tissue distribution of memory T and B cells in rhesus monkeys following influenza A infection. *J Immunol* (2015) 195(9):4378–86. doi:10.4049/jimmunol.1501702
37. Kohlmeier JE, Cookenham T, Roberts AD, Miller SC, Woodland DL. Type I interferons regulate cytolytic activity of memory CD8(+) T cells in the lung airways during respiratory virus challenge. *Immunity* (2010) 33(1):96–105. doi:10.1016/j.immuni.2010.06.016
38. McMaster SR, Wilson JJ, Wang H, Kohlmeier JE. Airway-resident memory CD8 T cells provide antigen-specific protection against respiratory virus challenge through rapid IFN- γ production. *J Immunol* (2015) 195(1):203–9. doi:10.4049/jimmunol.1402975
39. Sckisel GD, Tietze JK, Zamora AE, Hsiao HH, Priest SO, Wilkins DE, et al. Influenza infection results in local expansion of memory CD8(+) T cells with antigen non-specific phenotype and function. *Clin Exp Immunol* (2014) 175(1):79–91. doi:10.1111/cei.12186
40. Laidlaw BJ, Zhang N, Marshall HD, Staron M, Guan T, Hu Y, et al. CD4+ T cell help guides formation of CD103+ lung-resident memory CD8+ T cells during influenza viral infection. *Immunity* (2014) 41(4):633–45. doi:10.1016/j.immuni.2014.09.007
41. Chapman TJ, Lambert K, Topham DJ. Rapid reactivation of extralymphoid CD4 T cells during secondary infection. *PLoS One* (2011) 6(5):e20493. doi:10.1371/journal.pone.0020493
42. Chapman TJ, Topham DJ. Identification of a unique population of tissue-memory CD4+ T cells in the airways after influenza infection that is dependent on the integrin VLA-1. *J Immunol* (2010) 184(7):3841–9. doi:10.4049/jimmunol.0902281
43. Teijaro JR, Turner D, Pham Q, Wherry EJ, Lefrançois L, Farber DL. Cutting edge: tissue-retentive lung memory CD4 T cells mediate optimal protection to respiratory virus infection. *J Immunol* (2011) 187(11):5510–4. doi:10.4049/jimmunol.1102243
44. Neyt K, GeurtsvanKessel CH, Lambrecht BN. Double-negative T resident memory cells of the lung react to influenza virus infection via CD11c(hi) dendritic cells. *Mucosal Immunol* (2016) 9(4):999–1014. doi:10.1038/mi.2015.91
45. Wu T, Hu YH, Lee YT, Bouchard KR, Benechet A, Khanna K, et al. Lung-resident memory CD8 T cells (TRM) are indispensable for optimal crossprotection against pulmonary virus infection. *J Leukoc Biol* (2014) 95(2):215–24. doi:10.1189/jlb.0313180
46. Zarnitsyna VI, Handel A, McMaster SR, Hayward SL, Kohlmeier JE, Antia R. Mathematical model reveals the role of memory CD8 T cell populations in recall responses to influenza. *Front Immunol* (2016) 7:165. doi:10.3389/fimmu.2016.00165
47. Iborra S, Martínez-López M, Khouili SC, Enamorado M, Cueto FJ, Conde-Garrosa R, et al. Optimal generation of tissue-resident but not circulating memory T cells during viral infection requires crosspriming by DNGR-1+ dendritic cells. *Immunity* (2016) 45(4):847–60. doi:10.1016/j.immuni.2016.08.019
48. Slutter B, Van Braeckel-Budimir N, Abboud G, Varga SM, Salek-Ardakani S, Harty JT. Dynamics of influenza-induced lung-resident memory T cells underlie waning heterosubtypic immunity. *Sci Immunol* (2017) 2(7):06. doi:10.1126/sciimmunol.aag2031
49. Takamura S, Yagi H, Hakata Y, Motozono C, McMaster SR, Masumoto T, et al. Specific niches for lung-resident memory CD8+ T cells at the site of tissue regeneration enable CD69-independent maintenance. *J Exp Med* (2016) 213(13):3057–73. doi:10.1084/jem.20160938
50. McMaster SR, Wein AN, Dunbar PR, Hayward SL, Cartwright EK, Denning TL, et al. Pulmonary antigen encounter regulates the establishment of tissue-resident CD8 memory T cells in the lung airways and parenchyma. *Mucosal Immunol* (2018). doi:10.1038/s41385-018-0003-x
51. Pizzolla A, Wang Z, Groom JR, Kedzierska K, Brooks AG, Reading PC, et al. Nasal-associated lymphoid tissues (NALTs) support the recall but not priming of influenza virus-specific cytotoxic T cells. *Proc Natl Acad Sci U S A* (2017) 114(20):5225–30. doi:10.1073/pnas.1620194114
52. Knudson CJ, Weiss KA, Hartwig SM, Varga SM. The pulmonary localization of virus-specific T lymphocytes is governed by the tissue tropism of infection. *J Virol* (2014) 88(16):9010–6. doi:10.1128/JVI.00329-14
53. Zens KD, Chen JK, Farber DL. Vaccine-generated lung tissue-resident memory provides heterosubtypic protection to influenza infection. *JCI Insight* (2016) 1(10):e85832. doi:10.1172/jci.insight.85832
54. Gasper DJ, Neldner B, Plisch EH, Rustom H, Carrow E, Imai H, et al. Effective respiratory CD8 T-cell immunity to influenza virus induced by intranasal carbomer-lecithin-adjuvanted non-replicating vaccines. *PLoS Pathog* (2016) 12(12):e1006064. doi:10.1371/journal.ppat.1006064
55. Deliyannis G, Kedzierska K, Lau YF, Zeng WG, Turner SJ, Jackson DC, et al. Intranasal lipopeptide primes lung-resident memory CD8+ T cells for long-term pulmonary protection against influenza. *Eur J Immunol* (2006) 36(3):770–8. doi:10.1002/eji.200535217
56. Lee YN, Lee YT, Kim MC, Gewirtz AT, Kang SMA. Novel vaccination strategy mediating the induction of lung-resident memory CD8 T cells confers heterosubtypic immunity against future pandemic influenza virus. *J Immunol* (2016) 196(6):2637–45. doi:10.4049/jimmunol.1501637
57. Mullin J, Ahmed MS, Sharma R, Upile N, Beer H, Achar P, et al. Activation of cross-reactive mucosal T and B cell responses in human nasopharynx-associated lymphoid tissue in vitro by modified vaccinia Ankara-vectored influenza vaccines. *Vaccine* (2016) 34(14):1688–95. doi:10.1016/j.vaccine.2016.02.028
58. Zhou AC, Wagar LE, Wortzman ME, Watts TH. Intrinsic 4-1BB signals are indispensable for the establishment of an influenza-specific tissue-resident memory CD8 T-cell population in the lung. *Mucosal Immunol* (2017) 10(5):1294–309. doi:10.1038/mi.2016.124
59. Kang MC, Choi DH, Choi YW, Park SJ, Namkoong H, Park KS, et al. Intranasal introduction of Fc-fused interleukin-7 provides long-lasting prophylaxis against lethal influenza virus infection. *J Virol* (2016) 90(5):2273–84. doi:10.1128/JVI.02768-15
60. Wakim LM, Smith J, Caminschi I, Lahoud MH, Villadangos JA. Antibody-targeted vaccination to lung dendritic cells generates tissue-resident memory CD8 T cells that are highly protective against influenza virus infection. *Mucosal Immunol* (2015) 8(5):1060–71. doi:10.1038/mi.2014.133
61. Maartens G, Celum C, Lewin SR. HIV infection: epidemiology, pathogenesis, treatment, and prevention. *Lancet* (2014) 384(9939):258–71. doi:10.1016/S0140-6736(14)60164-1
62. Kiniry BE, Li S, Ganesh A, Hunt PW, Somsouk M, Skinner PJ, et al. Detection of HIV-1-specific gastrointestinal tissue resident CD8+ T-cells in chronic infection. *Mucosal Immunol* (2017) 15:15. doi:10.1038/mi.2017.96
63. Gibbs A, Buggert M, Edfeldt G, Ranefall P, Introini A, Cheuk S, et al. HIV-infected women have high numbers of CD103-CD8+ T cells residing close to the basal membrane of the ectocervical epithelium. *J Infect Dis* (2017) 20:20. doi:10.1093/infdis/jix661
64. Moylan DC, Goepfert PA, Kempf MC, Saag MS, Richter HE, Mestecky J, et al. Diminished CD103 (α EP7) expression on resident T cells from the female genital tract of HIV-positive women. *Pathog Immunol* (2017) 1(2):371–87. doi:10.20411/pai.v1i2.166
65. Damouche A, Pourcher G, Pourcher V, Benoist S, Busson E, Lataillade JJ, et al. High proportion of PD-1-expressing CD4+ T cells in adipose tissue constitutes an immunomodulatory microenvironment that may support HIV persistence. *Eur J Immunol* (2017) 47(12):2113–23. doi:10.1002/eji.201747060
66. Pattacini L, Baeten J, Lingappa J, Lund J. HIV infection impairs CD8+resident memory T cell frequency in cervical mucosae. *J Immunol* (2016) 196:208–22.
67. Adnan S, Reeves RK, Gillis J, Wong FE, Yu Y, Camp JV, et al. Persistent low-level replication of SIV Δ nef drives maturation of antibody and CD8 T cell responses to induce protective immunity against vaginal SIV infection. *PLoS Pathog* (2016) 12(12):e1006104. doi:10.1371/journal.ppat.1006104

68. Tan HX, Wheatley AK, Esterbauer R, Jegaskanda S, Glass JJ, Masopust D, et al. Induction of vaginal-resident HIV-specific CD8 T cells with mucosal prime-boost immunization. *Mucosal Immunol* (2017) 25:25. doi:10.1038/mi.2017.89
69. Zaric M, Becker PD, Hervouet C, Kalcheva P, Yus BI, Cocita C, et al. Long-lived tissue resident HIV-1 specific memory CD8(+) T cells are generated by skin immunization with live virus vectored microneedle arrays. *J Control Release* (2017) 268:166–75. doi:10.1016/j.jconrel.2017.10.026
70. Roberts KL, Smith GL. Vaccinia virus morphogenesis and dissemination. *Trends Microbiol* (2008) 16(10):472–9. doi:10.1016/j.tim.2008.07.009
71. Lofquist JM, Weimert NA, Hayney MS. Smallpox: a review of clinical disease and vaccination. *Am J Health Syst Pharm* (2003) 60(8):749–56; quiz 57–8.
72. Jiang X, Clark RA, Liu L, Wagers AJ, Fuhlbrigge RC, Kupper TS. Skin infection generates non-migratory memory CD8+ T(RM) cells providing global skin immunity. *Nature* (2012) 483(7388):227–31. doi:10.1038/nature10851
73. Gaide O, Emerson RO, Jiang XD, Gulati N, Nizza S, Desmarais C, et al. Common clonal origin of central and resident memory T cells following skin immunization. *Nat Med* (2015) 21(6):647–53. doi:10.1038/nm.3860
74. Gilchuk P, Hill TM, Guy C, McMaster SR, Boyd KL, Rabacal WA, et al. A distinct lung-interstitium-resident memory CD8(+) T cell subset confers enhanced protection to lower respiratory tract infection. *Cell Rep* (2016) 16(7):1800–9. doi:10.1016/j.celrep.2016.07.037
75. Hersperger AR, Siciliano NA, DeHaven BC, Snook AE, Eisenlohr LC. Epithelial immunization induces polyfunctional CD8(+) T cells and optimal mousepox protection. *J Virol* (2014) 88(16):9472–5. doi:10.1128/JVI.01464-14
76. Kadoki M, Patil A, Thaiss CC, Brooks DJ, Pandey S, Deep D, et al. Organism-level analysis of vaccination reveals networks of protection across tissues. *Cell* (2017) 171(2):398–413.e21. doi:10.1016/j.cell.2017.08.024
77. Woodward Davis AS, Bergsbaken T, Delaney MA, Bevan MJ. Dermal resident versus recruited $\gamma\delta$ T cell response to cutaneous Vaccinia virus infection. *J Immunol* (2015) 194(5):2260–7. doi:10.4049/jimmunol.1402438
78. Muschawekch A, Buchholz VR, Fellenzer A, Hessel C, König PA, Tao S, et al. Antigen-dependent competition shapes the local repertoire of tissue-resident memory CD8+ T cells. *J Exp Med* (2016) 213(13):3075–86. doi:10.1084/jem.20160888
79. Khan TN, Mooster JL, Kilgore AM, Osborn JF, Nolz JC. Local antigen in nonlymphoid tissue promotes resident memory CD8+ T cell formation during viral infection. *J Exp Med* (2016) 213(6):951–66. doi:10.1084/jem.20151855
80. Danahy DB, Anthony SM, Jensen IJ, Hartwig SM, Shan Q, Xue HH, et al. Polymicrobial sepsis impairs bystander recruitment of effector cells to infected skin despite optimal sensing and alarming function of skin resident memory CD8 T cells. *PLoS Pathog* (2017) 13(9):e1006569. doi:10.1371/journal.ppat.1006569
81. Borchers AT, Chang C, Gershwin ME, Gershwin LJ. Respiratory syncytial virus – a comprehensive review. *Clin Rev Allergy Immunol* (2013) 45(3):331–79. doi:10.1007/s12016-013-8368-9
82. Jozwik A, Habibi MS, Paras A, Zhu J, Guvenel A, Dhariwal J, et al. RSV-specific airway resident memory CD8+ T cells and differential disease severity after experimental human infection. *Nat Commun* (2015) 6:10224. doi:10.1038/ncomms10224
83. Kinnear E, Lambert L, McDonald JU, Cheeseman HM, Caproni LJ, Tregoning JS. Airway T cells protect against RSV infection in the absence of antibody. *Mucosal Immunol* (2018) 11(1):249–56. doi:10.1038/mi.2017.79
84. Li HL, Callahan C, Citron M, Wen ZY, Touch S, Monslow MA, et al. Respiratory syncytial virus elicits enriched CD8+ T lymphocyte responses in lung compared with blood in African green monkeys. *PLoS One* (2017) 12(11):e0187642. doi:10.1371/journal.pone.0187642
85. Morabito KM, Ruckwardt TR, Redwood AJ, Moin SM, Price DA, Graham BS. Intranasal administration of RSV antigen-expressing MCMV elicits robust tissue-resident effector and effector memory CD8+ T cells in the lung. *Mucosal Immunol* (2017) 10(2):545–54. doi:10.1038/mi.2016.48
86. Zhang L, Li HY, Hai Y, Yin W, Li WJ, Zheng BY, et al. CpG in combination with an inhibitor of Notch signaling suppresses formalin-inactivated respiratory syncytial virus-enhanced airway hyperresponsiveness and inflammation by inhibiting Th17 memory responses and promoting tissue-resident memory cells in lungs. *J Virol* (2017) 91(10):e02111–16. doi:10.1128/JVI.02111-16
87. Schwarz B, Morabito KM, Ruckwardt TJ, Patterson DP, Avera J, Miettinen HM, et al. Viruslike particles encapsidating respiratory syncytial virus M and M2 proteins induce robust T cell responses. *ACS Biomater Sci Eng* (2016) 2(12):2324–32. doi:10.1021/acsbomaterials.6b00532
88. Schmidt ME, Knudson CJ, Hartwig SM, Pewe LL, Meyerholz DK, Langlois RA, et al. Memory CD8 T cells mediate severe immunopathology following respiratory syncytial virus infection. *PLoS Pathog* (2018) 14(1):e1006810. doi:10.1371/journal.ppat.1006810
89. Klenerman P, Oxenius A. T cell responses to cytomegalovirus. *Nat Rev Immunol* (2016) 16(6):367–77. doi:10.1038/nri.2016.38
90. Thom JT, Weber TC, Walton SM, Torti N, Oxenius A. The salivary gland acts as a sink for tissue-resident memory CD8(+) T cells, facilitating protection from local cytomegalovirus infection. *Cell Rep* (2015) 13(6):1125–36. doi:10.1016/j.celrep.2015.09.082
91. Smith CJ, Caldeira-Dantas S, Turula H, Snyder CM. Murine CMV infection induces the continuous production of mucosal resident T cells. *Cell Rep* (2015) 13(6):1137–48. doi:10.1016/j.celrep.2015.09.076
92. Caldeira-Dantas S, Furmanak T, Smith C, Quinn M, Teos LY, Ertel A, et al. The chemokine receptor CXCR3 promotes CD8+ T cell accumulation in uninfected salivary glands but is not necessary after murine cytomegalovirus infection. *J Immunol* (2018) 200(3):1133–45. doi:10.4049/jimmunol.1701272
93. Walton SM, Mandaric S, Torti N, Zimmermann A, Hengel H, Oxenius A. Absence of cross-presenting cells in the salivary gland and viral immune evasion confine cytomegalovirus immune control to effector CD4 T cells. *PLoS Pathog* (2011) 7(8):e1002214. doi:10.1371/journal.ppat.1002214
94. Prasad S, Hu S, Sheng WS, Singh A, Lokensgard JR. Tregs modulate lymphocyte proliferation, activation, and resident-memory T-cell accumulation within the brain during mcmv infection. *PLoS One* (2015) 10(12):e0145457. doi:10.1371/journal.pone.0145457
95. Prasad S, Hu S, Sheng WS, Chauhan P, Singh A, Lokensgard JR. The PD-1:PD-L1 pathway promotes development of brain-resident memory T cells following acute viral encephalitis. *J Neuroinflammation* (2017) 14:82. doi:10.1186/s12974-017-0860-3
96. Venturi V, Nzingha K, Amos TG, Charles WC, Dekhtiarenko I, Cicin-Sain L, et al. The neonatal CD8+ T cell repertoire rapidly diversifies during persistent viral infection. *J Immunol* (2016) 196(4):1604–16. doi:10.4049/jimmunol.1501867
97. Barouch DH, Picker LJ. Novel vaccine vectors for HIV-1. *Nat Rev Microbiol* (2014) 12(11):765–71. doi:10.1038/nrmicro3360
98. Knust B, Holman RC, Redd J, Mehal JM, Grube SM, MacNeil A, et al. Lymphocytic choriomeningitis virus infections among American Indians. *Emerg Infect Dis* (2013) 19(2):328–9. doi:10.3201/eid1902.120888
99. Steinert EM, Schenkel JM, Fraser KA, Beura LK, Manlove LS, Igyarto BZ, et al. Quantifying memory CD8 T cells reveals regionalization of immunosurveillance. *Cell* (2015) 161(4):737–49. doi:10.1016/j.cell.2015.03.031
100. Steinbach K, Vincenti I, Kreutzfeldt M, Page N, Muschawekch A, Wagner I, et al. Brain-resident memory T cells represent an autonomous cytotoxic barrier to viral infection. *J Exp Med* (2016) 213(8):1571–87. doi:10.1084/jem.20151916
101. Hofmann M, Oschowitz A, Kurzhals SR, Krüger CC, Pircher H. Thymus-resident memory CD8+ T cells mediate local immunity. *Eur J Immunol* (2013) 43(9):2295–304. doi:10.1002/eji.201343519
102. Beura LK, Anderson KG, Schenkel JM, Locquiao JJ, Fraser KA, Vezys V, et al. Lymphocytic choriomeningitis virus persistence promotes effector-like memory differentiation and enhances mucosal T cell distribution. *J Leukoc Biol* (2015) 97(2):217–25. doi:10.1189/jlb.1HI0314-154R
103. Casey KA, Fraser KA, Schenkel JM, Moran A, Abt MC, Beura LK, et al. Antigen-independent differentiation and maintenance of effector-like resident memory T cells in tissues. *J Immunol* (2012) 188(10):4866–75. doi:10.4049/jimmunol.1200402
104. Hondowicz BD, Kim KS, Ruterbusch MJ, Keitany GJ, Pepper M. IL-2 is required for the generation of viral-specific CD4+ Th1 tissue-resident memory cells and B cells are essential for maintenance in the lung. *Eur J Immunol* (2018) 48(1):80–6. doi:10.1002/eji.201746928
105. Schenkel JM, Fraser KA, Beura LK, Pauken KE, Vezys V, Masopust D. Resident memory CD8 T cells trigger protective innate and adaptive immune responses. *Science* (2014) 346:98–101. doi:10.1126/science.1254536

106. Gershon AA, Breuer J, Cohen JI, Cohrs RJ, Gershon MD, Gildea D, et al. Varicella zoster virus infection. *Nat Rev Dis Primers* (2015) 1:15016. doi:10.1038/nrdp.2015.16
107. Vukmanovic-Stejic M, Sandhu D, Seidel JA, Patel N, Sobande TO, Agius E, et al. The characterization of varicella zoster virus-specific T cells in skin and blood during aging. *J Invest Dermatol* (2015) 135(7):1752–62. doi:10.1038/jid.2015.63
108. Cutts FT, Franceschi S, Goldie S, Castellsague X, de Sanjose S, Garnett G, et al. Human papillomavirus and HPV vaccines: a review. *Bull World Health Organ* (2007) 85(9):719–26. doi:10.2471/BLT.06.038414
109. Harper DM, DeMars LR. HPV vaccines – a review of the first decade. *Gynecol Oncol* (2017) 146(1):196–204. doi:10.1016/j.ygyno.2017.04.004
110. Cuburu N, Khan S, Thompson CD, Kim R, Vellinga J, Zahn R, et al. Adenovirus vector-based prime-boost vaccination via heterologous routes induces cervicovaginal CD8⁺ T cell responses against HPV16 oncoproteins. *Int J Cancer* (2018) 142(7):1467–79. doi:10.1002/ijc.31166
111. Cuburu N, Graham BS, Buck CB, Kines RC, Pang YY, Day PM, et al. Intravaginal immunization with HPV vectors induces tissue-resident CD8⁺ T cell responses. *J Clin Invest* (2012) 122(12):4606–20. doi:10.1172/JCI63287
112. Koff RS. Review article: vaccination and viral hepatitis – current status and future prospects. *Aliment Pharmacol Ther* (2007) 26(10):1285–92. doi:10.1111/j.1365-2036.2007.03517.x
113. Pallett LJ, Davies J, Colbeck EJ, Robertson F, Hansi N, Easom NJW, et al. IL-2^{high} tissue-resident T cells in the human liver: sentinels for hepatotropic infection. *J Exp Med* (2017) 214(6):1567–80. doi:10.1084/jem.20162115
114. Stelma F, De Niet A, Sinnige MJ, Van Dort KA, Van Gisbergen KPJM, Verheij J, et al. Human intrahepatic CD69 + CD8⁺ T cells have a tissue resident memory T cell phenotype with reduced cytolytic capacity. *Sci Rep* (2017) 7(1). doi:10.1038/s41598-017-06352-3
115. Taylor GS, Long HM, Brooks JM, Rickinson AB, Hislop AD. The immunology of Epstein-Barr virus-induced disease. *Annu Rev Immunol* (2015) 33:787–821. doi:10.1146/annurev-immunol-032414-112326
116. Woodberry T, Suscovich TJ, Henry LM, August M, Waring MT, Kaur A, et al. Alpha E beta 7 (CD103) expression identifies a highly active, tonsil-resident effector-memory CTL population. *J Immunol* (2005) 175(7):4355–62. doi:10.4049/jimmunol.175.7.4355
117. Woon HG, Braun A, Li J, Smith C, Edwards J, Sierro F, et al. Compartmentalization of total and virus-specific tissue-resident memory CD8⁺ T cells in human lymphoid organs. *PLoS Pathog* (2016) 12(8):e1005799. doi:10.1371/journal.ppat.1005799
118. Hislop AD, Kuo M, Drake-Lee AB, Akbar AN, Bergler W, Hammerschmitt N, et al. Tonsillar homing of Epstein-Barr virus-specific CD8⁺ T cells and the virus-host balance. *J Clin Invest* (2005) 115(9):2546–55. doi:10.1172/JCI24810
119. Timoney P. Vesicular stomatitis. *Vet Rec* (2016) 179(5):119–20. doi:10.1136/vr.i4075
120. Wakim LM, Woodward-Davis A, Bevan MJ. Memory T cells persisting within the brain after local infection show functional adaptations to their tissue of residence. *Proc Natl Acad Sci U S A* (2010) 107(42):17872–9. doi:10.1073/pnas.1010201107
121. Wakim LM, Woodward-Davis A, Liu R, Hu YF, Villadangos J, Smyth G, et al. The molecular signature of tissue resident memory CD8 T cells isolated from the brain. *J Immunol* (2012) 189(7):3462–71. doi:10.4049/jimmunol.1201305
122. Jiang M, Abend JR, Johnson SF, Imperiale MJ. The role of polyomaviruses in human disease. *Virology* (2009) 384(2):266–73. doi:10.1016/j.virol.2008.09.027
123. Frost EL, Kersh AE, Evavold BD, Lukacher AE. Cutting edge: resident memory CD8 T cells express high-affinity TCRs. *J Immunol* (2015) 195(8):3520–4. doi:10.4049/jimmunol.1501521
124. Shwetank, Abdelsamed HA, Frost EL, Schmitz HM, Mockus TE, Youngblood BA, et al. Maintenance of PD-1 on brain-resident memory CD8 T cells is antigen independent. *Immunol Cell Biol* (2017) 95(10):953–9. doi:10.1038/icb.2017.62
125. Maru S, Jin G, Schell TD, Lukacher AE. TCR stimulation strength is inversely associated with establishment of functional brain-resident memory CD8 T cells during persistent viral infection. *PLoS Pathog* (2017) 13(4):e1006318. doi:10.1371/journal.ppat.1006318
126. van Aalderen MC, Remmerswaal EBM, Heutinck KM, ten Brinke A, Feltkamp MCW, van der Weerd NC, et al. Clinically relevant reactivation of polyomavirus BK (BKPv) in HLA-A02-positive renal transplant recipients is associated with impaired effector-memory differentiation of BKPv-specific CD8⁺ T cells. *PLoS Pathog* (2016) 12(10):e1005903. doi:10.1371/journal.ppat.1005903
127. von Essen MR, Kongsbak M, Geisler C. Mechanisms behind functional avidity maturation in T cells. *Clin Dev Immunol* (2012) 2012:163453. doi:10.1155/2012/163453
128. Moghadam SRJ, Omid N, Bayrami S, Moghadam SJ, SeyedAlinaghi S. Ebola viral disease: a review literature. *Asian Pac J Trop Biomed* (2015) 5(4):260–7. doi:10.1016/S2221-1691(15)30341-5
129. Meyer M, Garron T, Lubaki NM, Mire CE, Fenton KA, Klages C, et al. Aerosolized Ebola vaccine protects primates and elicits lung-resident T cell responses. *J Clin Invest* (2015) 125(8):3241–55. doi:10.1172/JCI81532
130. Cutler AJ, Oliveira J, Ferreira RC, Challis B, Walker NM, Caddy S, et al. Capturing the systemic immune signature of a norovirus infection: an n-of-1 case study within a clinical trial. *Wellcome Open Res* (2017) 2:28. doi:10.12688/wellcomeopenres.11300.3
131. Tomov VT, Palko O, Lau CW, Pattekar A, Sun YH, Tacheva R, et al. Differentiation and protective capacity of virus-specific CD8(+) T cells suggest murine Norovirus persistence in an immune-privileged enteric niche. *Immunity* (2017) 47(4):723–38. doi:10.1016/j.immuni.2017.09.017
132. Melvin JA, Scheller EV, Miller JF, Cotter PA. *Bordetella pertussis* pathogenesis: current and future challenges. *Nat Rev Microbiol* (2014) 12(4):274–88. doi:10.1038/nrmicro3235
133. Rowe J, Yerkovich ST, Richmond P, Suriyaarachchi D, Fisher E, Feddema L, et al. Th2-associated local reactions to the acellular diphtheria-tetanus-pertussis vaccine in 4- to 6-year-old children. *Infect Immun* (2005) 73(12):8130–5. doi:10.1128/IAI.73.12.8130-8135.2005
134. Smits K, Pottier G, Smet J, Dirix V, Vermeulen F, De Schutter I, et al. Different T cell memory in preadolescents after whole-cell or acellular pertussis vaccination. *Vaccine* (2013) 32(1):111–8. doi:10.1016/j.vaccine.2013.10.056
135. Wilk MM, Misiak A, McManus RM, Allen AC, Lynch MA, Mills KHG. Lung CD4 tissue-resident memory T cells mediate adaptive immunity induced by previous infection of mice with *Bordetella pertussis*. *J Immunol* (2017) 199(1):233–43. doi:10.4049/jimmunol.1602051
136. Misiak A, Wilk MM, Raverdeau M, Mills KHG. IL-17-producing innate and pathogen-specific tissue resident memory $\gamma\delta$ T cells expand in the lungs of *Bordetella pertussis*-infected mice. *J Immunol* (2017) 198(1):363–74. doi:10.4049/jimmunol.1601024
137. Haq IJ, Battersby AC, Eastham K, McKean M. Community acquired pneumonia in children. *BMJ* (2017) 356:616–9. doi:10.1136/bmj.j686
138. Rozenbaum MH, Pechlivanoglou P, van der Werf TS, Lo-Ten-Foe JR, Postma MJ, Hak E. The role of *Streptococcus pneumoniae* in community-acquired pneumonia among adults in Europe: a meta-analysis. *Eur J Clin Microbiol Infect Dis* (2013) 32(3):305–16. doi:10.1007/s10096-012-1778-4
139. Smith NM, Wasserman GA, Coleman FT, Hilliard KL, Yamamoto K, Lipsitz E, et al. Regionally compartmentalized resident memory T cells mediate naturally acquired protection against pneumococcal pneumonia. *Mucosal Immunol* (2018) 11(1):220–35. doi:10.1038/mi.2017.43
140. Babb R, Chen A, Ogunniyi AD, Hirst TR, Kara EE, McColl SR, et al. Enhanced protective responses to a serotype-independent pneumococcal vaccine when combined with an inactivated influenza vaccine. *Clin Sci* (2017) 131(2):169–80. doi:10.1042/CS20160475
141. O'Garra A, Redford PS, McNab FW, Bloom CI, Wilkinson RJ, Berry MPR. The immune response in tuberculosis. *Annu Rev Immunol* (2013) 31(1):475–527. doi:10.1146/annurev-immunol-032712-095939
142. Moliva JI, Turner J, Torrelles JB. Immune responses to Bacillus Calmette-Guérin vaccination: why do they fail to protect against *Mycobacterium tuberculosis*? *Front Immunol* (2017) 8:407. doi:10.3389/fimmu.2017.00407
143. Walrath J, Zukowski L, Krywiak A, Silver RF. Resident Th1-like effector memory cells in pulmonary recall responses to *Mycobacterium tuberculosis*. *Am J Respir Cell Mol Biol* (2005) 33(1):48–55. doi:10.1165/rcmb.2005-0600OC
144. Jeyanathan M, Heriazon A, Xing Z. Airway luminal T cells: a newcomer on the stage of TB vaccination strategies. *Trends Immunol* (2010) 31(7):247–52. doi:10.1016/j.it.2010.05.002

145. Wang J, Thorson L, Stokes RW, Santosuosso M, Huygen K, Zganiacz A, et al. Single mucosal, but not parenteral, immunization with recombinant adenoviral-based vaccine provides potent protection from pulmonary tuberculosis. *J Immunol* (2004) 173(10):6357–65. doi:10.4049/jimmunol.173.10.6357
146. Santosuosso M, Zhang X, McCormick S, Wang J, Hitt M, Xing Z. Mechanisms of mucosal and parenteral tuberculosis vaccinations: adenoviral-based mucosal immunization preferentially elicits sustained accumulation of immune protective CD4 and CD8 T cells within the airway lumen. *J Immunol* (2005) 174(12):7986–94. doi:10.4049/jimmunol.174.12.7986
147. Connor LM, Harvie MC, Rich FJ, Quinn KM, Brinkmann V, Le Gros G, et al. A key role for lung-resident memory lymphocytes in protective immune responses after BCG vaccination. *Eur J Immunol* (2010) 40(9):2482–92. doi:10.1002/eji.200940279
148. Perdomo C, Zedler U, Kühl AA, Lozza L, Saikali P, Sander LE, et al. Mucosal BCG vaccination induces protective lung-resident memory T cell populations against tuberculosis. *MBio* (2016) 7(6):e01686–16. doi:10.1128/mBio.01686-16
149. Hu ZD, Wong KW, Zhao HM, Wen HL, Ji P, Ma H, et al. Sendai virus mucosal vaccination establishes lung-resident memory CD8 T cell immunity and boosts BCG-primed protection against TB in mice. *Mol Ther* (2017) 25(5):1222–33. doi:10.1016/j.yimthe.2017.02.018
150. Haddadi S, Thantrige-Don N, Afkhami S, Khera A, Jeyanathan M, Xing Z. Expression and role of VLA-1 in resident memory CD8 T cell responses to respiratory mucosal viral-vectored immunization against tuberculosis. *Sci Rep* (2017) 7(1):9525. doi:10.1038/s41598-017-09909-4
151. Hansen SG, Zak DE, Xu G, Ford JC, Marshall EE, Malouli D, et al. Prevention of tuberculosis in rhesus macaques by a cytomegalovirus-based vaccine. *Nat Med* (2018) 24(2):130–43. doi:10.1038/nm.4473
152. Kaushal D, Foreman TW, Gautam US, Alvarez X, Adekambi T, Rangel-Moreno J, et al. Mucosal vaccination with attenuated *Mycobacterium tuberculosis* induces strong central memory responses and protects against tuberculosis. *Nat Commun* (2015) 6:8533. doi:10.1038/ncomms9533
153. Elwell C, Mirrashidi K, Engel J. *Chlamydia* cell biology and pathogenesis. *Nat Rev Microbiol* (2016) 14(6):385–400. doi:10.1038/nrmicro.2016.30
154. Brunham RC. Immunity to *Chlamydia trachomatis*. *J Infect Dis* (2013) 207(12):1796–7. doi:10.1093/infdis/jit095
155. Batteiger BE, Xu F, Johnson RE, Rekart ML. Protective immunity to *Chlamydia trachomatis* genital infection: evidence from human studies. *J Infect Dis* (2010) 201(Suppl 2):S178–89. doi:10.1086/652400
156. Geisler WM, Lensing SY, Press CG, Hook EW III. Spontaneous resolution of genital *Chlamydia trachomatis* infection in women and protection from reinfection. *J Infect Dis* (2013) 207(12):1850–6. doi:10.1093/infdis/jit094
157. Johnson RM, Yu H, Strank NO, Karunakaran K, Zhu Y, Brunham RC. B cell presentation of *Chlamydia* antigen selects out protective CD4 γ 13 T cells: implications for genital tract tissue-resident memory lymphocyte clusters. *Infect Immun* (2018) 86(2):e00614–17. doi:10.1128/iai.00614-17
158. Stary G, Olive A, Radovic-Moreno AF, Gondek D, Alvarez D, Basto PA, et al. A mucosal vaccine against *Chlamydia trachomatis* generates two waves of protective memory T cells. *Science* (2015) 348(6241):aaa8205. doi:10.1126/science.aaa8205
159. O'Meara CP, Armitage CW, Kollipara A, Andrew DW, Trim L, Plenderleith MB, et al. Induction of partial immunity in both males and females is sufficient to protect females against sexual transmission of *Chlamydia*. *Mucosal Immunol* (2016) 9(4):1076–88. doi:10.1038/mi.2015.125
160. Johnson RM, Brunham RC. Tissue-resident T cells as the central paradigm of *Chlamydia* immunity. *Infect Immun* (2016) 84(4):868–73. doi:10.1128/IAI.01378-15
161. Fletcher SM, McLaws M-L, Ellis JT. Prevalence of gastrointestinal pathogens in developed and developing countries: systematic review and meta-analysis. *J Public Health Res* (2013) 2(1):42–53. doi:10.4081/jphr.2013.e9
162. de Noordhout CM, Devleeschauwer B, Angulo FJ, Verbeke G, Haagsma J, Kirk M, et al. The global burden of listeriosis: a systematic review and meta-analysis. *Lancet Infect Dis* (2014) 14(11):1073–82. doi:10.1016/S1473-3099(14)70870-9
163. Zenewicz LA, Shen H. Innate and adaptive immune responses to *Listeria monocytogenes*: a short overview. *Microbes Infect* (2007) 9(10):1208–15. doi:10.1016/j.micinf.2007.05.008
164. Jungi TW, Jungi R. Immunological memory to *Listeria monocytogenes* in rodents. IV. Studies on origin and fate of tissue-positioned T memory cells. *Immunology* (1981) 44(4):789–98.
165. Sheridan BS, Pham QM, Lee YT, Cauley LS, Puddington L, Lefrançois L. Oral infection drives a distinct population of intestinal resident memory CD8(+) T cells with enhanced protective function. *Immunity* (2014) 40(5):747–57. doi:10.1016/j.immuni.2014.03.007
166. Romagnoli PA, Sheridan BS, Pham QM, Lefrançois L, Khanna KM. IL-17A-producing resident memory $\gamma\delta$ T cells orchestrate the innate immune response to secondary oral *Listeria monocytogenes* infection. *Proc Natl Acad Sci U S A* (2016) 113(30):8502–7. doi:10.1073/pnas.1600713113
167. Amphlett A. Far east scarlet-like fever: a review of the epidemiology, symptomatology, and role of superantigenic toxin: *Yersinia pseudotuberculosis*-derived mitogen A. *Open Forum Infect Dis* (2016) 3(1):ofv202. doi:10.1093/ofid/ofv202
168. Bergsbaken T, Bevan MJ. Proinflammatory microenvironments within the intestine regulate the differentiation of tissue-resident CD8⁺ T cells responding to infection. *Nat Immunol* (2015) 16(4):406–14. doi:10.1038/ni.3108
169. Bergsbaken T, Bevan MJ, Fink PJ. Local inflammatory cues regulate differentiation and persistence of CD8⁺ tissue-resident memory T cells. *Cell Rep* (2017) 19(1):114–24. doi:10.1016/j.celrep.2017.03.031
170. Eng S-K, Pusparajah P, Ab Mutalib N-S, Ser H-L, Chan K-G, Lee L-H. *Salmonella*: a review on pathogenesis, epidemiology and antibiotic resistance. *Front Life Sci* (2015) 8(3):284–93. doi:10.1080/21553769.2015.1051243
171. Gayet R, Boley G, Rochereau N, Paul S, Corthesy B. Vaccination against *Salmonella* infection: the mucosal way. *Microbiol Mol Biol Rev* (2017) 81(3):e00007–17. doi:10.1128/MMBR.00007-17
172. Lee SJ, Benoun J, Sheridan BS, Fogassy Z, Pham O, Pham QM, et al. Dual immunization with SseB/Flagellin provides enhanced protection against *Salmonella* infection mediated by circulating memory cells. *J Immunol* (2017) 199(4):1353–61. doi:10.4049/jimmunol.1601357
173. Nourollahpour Shiadeh M, Niyayati M, Fallahi S, Rostami A. Human parasitic protozoan infection to infertility: a systematic review. *Parasitol Res* (2016) 115(2):469–77. doi:10.1007/s00436-015-4827-y
174. Gurung P, Kanneganti T-D. Immune responses against protozoan parasites: a focus on the emerging role of Nod-like receptors. *Cell Mol Life Sci* (2016) 73(16):3035–51. doi:10.1007/s00018-016-2212-3
175. Rénia L, Goh YS. Malaria parasites: the great escape. *Front Immunol* (2016) 7:463. doi:10.3389/fimmu.2016.00463
176. Tse SW, Cockburn IA, Zhang H, Scott AL, Zavala F. Unique transcriptional profile of liver-resident memory CD8⁺ T cells induced by immunization with malaria sporozoites. *Genes Immun* (2013) 14(5):302–9. doi:10.1038/gene.2013.20
177. Pichyangkul S, Spring MD, Yongvanitchit K, Kum-Arb U, Limsalakpetch A, Im-Erbsin R, et al. Chemoprophylaxis with sporozoite immunization in *P. knowlesi* rhesus monkeys confers protection and elicits sporozoite-specific memory T cells in the liver. *PLoS One* (2017) 12(2):e0171826. doi:10.1371/journal.pone.0171826
178. Fernandez-Ruiz D, Ng WY, Holz L, Ma J, Zaid A, Wong YC, et al. Liver-resident memory T cells form a front-line defence against malaria liver-stage infection. *Immunity* (2016) 45(4):889–902. doi:10.1016/j.immuni.2016.08.011
179. McNamara HA, Cai Y, Wagle MV, Sontani Y, Roots CM, Miosge LA, et al. Up-regulation of LFA-1 allows liver-resident memory T cells to patrol and remain in the hepatic sinusoids. *Sci Immunol* (2017) 2(9):eaaj1996. doi:10.1126/sciimmunol.aaj1996
180. Torres-Guerrero E, Quintanilla-Cedillo MR, Ruiz-Esmenjaud J, Arenas R. Leishmaniasis: a review. *F1000Res* (2017) 6:750. doi:10.12688/f1000research.11120.1
181. Glennie ND, Scott P. Memory T cells in cutaneous leishmaniasis. *Cell Immunol* (2016) 309:50–4. doi:10.1016/j.cellimm.2016.07.010
182. Glennie ND, Volk SW, Scott P. Skin-resident CD4⁺ T cells protect against *Leishmania major* by recruiting and activating inflammatory monocytes. *PLoS Pathog* (2017) 13(4):e1006349. doi:10.1371/journal.ppat.1006349
183. Glennie ND, Yeramilli VA, Beiting DP, Volk SW, Weaver CT, Scott P. Skin-resident memory CD4⁺ T cells enhance protection against *Leishmania major* infection. *J Exp Med* (2015) 212(9):1405–14. doi:10.1084/jem.20142101

184. Rodrigues A, Claro M, Alexandre-Pires G, Santos-Mateus D, Martins C, Valério-Bolas A, et al. *Leishmania infantum* antigens modulate memory cell subsets of liver resident T lymphocyte. *Immunobiology* (2017) 222(2):409–22. doi:10.1016/j.imbio.2016.08.009
185. Saadatnia G, Golkar M. A review on human toxoplasmosis. *Scand J Infect Dis* (2012) 44(11):805–14. doi:10.3109/00365548.2012.693197
186. Dupont CD, Christian DA, Hunter CA. Immune response and immunopathology during toxoplasmosis. *Semin Immunopathol* (2012) 34(6):793–813. doi:10.1007/s00281-012-0339-3
187. Landrith TA, Sureshchandra S, Rivera A, Jang JC, Rais M, Nair MG, et al. CD103⁺ CD8 T cells in the toxoplasma-infected brain exhibit a tissue-resident memory transcriptional profile. *Front Immunol* (2017) 8:335. doi:10.3389/fimmu.2017.00335
188. Han SJ, Glatman Zaretsky A, Andrade-Oliveira V, Collins N, Dzutsev A, Shaik J, et al. White adipose tissue is a reservoir for memory T cells and promotes protective memory responses to infection. *Immunity* (2017) 47(6):1154–1168.e6. doi:10.1016/j.immuni.2017.11.009
189. Jackson JA, Friberg IM, Little S, Bradley JE. Review series on helminths, immune modulation and the hygiene hypothesis: Immunity against helminths and immunological phenomena in modern human populations: coevolutionary legacies? *Immunology* (2009) 126(1):18–27. doi:10.1111/j.1365-2567.2008.03010.x
190. Steinfelder S, Rausch S, Michael D, Kühl AA, Hartmann S. Intestinal helminth infection induces highly functional resident memory CD4⁺ T cells in mice. *Eur J Immunol* (2017) 47(2):353–63. doi:10.1002/eji.201646575
191. Thawer SG, Horsnell WG, Darby M, Hoving JC, Dewals B, Cutler AJ, et al. Lung-resident CD4(+) T cells are sufficient for IL-4/alpha-dependent recall immunity to *Nippostrongylus brasiliensis* infection. *Mucosal Immunol* (2014) 7(2):239–48. doi:10.1038/mi.2013.40
192. Reynolds LA, Filbey KJ, Maizels RM. Immunity to the model intestinal helminth parasite *Heligmosomoides polygyrus*. *Semin Immunopathol* (2012) 34(6):829–46. doi:10.1007/s00281-012-0347-3
193. Brombacher TM, De Gouveia KS, Cruywagen L, Makena N, Booley F, Tamgue O, et al. *Nippostrongylus brasiliensis* infection leads to impaired reference memory and myeloid cell interference. *Sci Rep* (2018) 8(1):2958. doi:10.1038/s41598-018-20770-x
194. Badiie P, Hashemizadeh Z. Opportunistic invasive fungal infections: diagnosis & clinical management. *Indian J Med Res* (2014) 139(2):195–204.
195. Kim J, Sudbery P. *Candida albicans*, a major human fungal pathogen. *J Microbiol* (2011) 49(2):171–7. doi:10.1007/s12275-011-1064-7
196. Park CO, Fu X, Jiang X, Pan Y, Teague JE, Collins N, et al. Staged development of long-lived T-cell receptor $\alpha\beta$ TH17 resident memory T-cell population to *Candida albicans* after skin infection. *J Allergy Clin Immunol* (2017) 17(17). doi:10.1016/j.jaci.2017.09.042
197. Conti HR, Peterson AC, Brane L, Huppler AR, Hernández-Santos N, Whibley N, et al. Oral-resident natural Th17 cells and $\gamma\delta$ T cells control opportunistic *Candida albicans* infections. *J Exp Med* (2014) 211(10):2075–84. doi:10.1084/jem.20130877
198. Seneschal J, Clark RA, Gehad A, Baecher-Allan CM, Kupper TS. Human epidermal Langerhans cells maintain immune homeostasis in skin by activating skin resident regulatory T cells. *Immunity* (2012) 36(5):873–84. doi:10.1016/j.immuni.2012.03.018
199. Strutt TM, Dhume K, Finn CM, Hwang JH, Castonguay C, Swain SL, et al. IL-15 supports the generation of protective lung-resident memory CD4 T cells. *Mucosal Immunol* (2018) 11(3):668–80. doi:10.1038/mi.2017.101

Conflict of Interest Statement: The authors declare that the research was conducted in the absence of any commercial or financial relationships that could be construed as a potential conflict of interest.

The handling Editor is currently co-organizing a Research Topic with one of the reviewers ET, and confirms the absence of any other collaboration.

Copyright © 2018 Muruganandah, Sathkumara, Navarro and Kupz. This is an open-access article distributed under the terms of the Creative Commons Attribution License (CC BY). The use, distribution or reproduction in other forums is permitted, provided the original author(s) and the copyright owner(s) are credited and that the original publication in this journal is cited, in accordance with accepted academic practice. No use, distribution or reproduction is permitted which does not comply with these terms.