



# Prostaglandin E<sub>2</sub> Inhibits Group 2 Innate Lymphoid Cell Activation and Allergic Airway Inflammation Through E-Prostanoid 4-Cyclic Adenosine Monophosphate Signaling

Yu Zhou<sup>1†</sup>, Wei Wang<sup>1†</sup>, Conghui Zhao<sup>2</sup>, Yan Wang<sup>1</sup>, Haoming Wu<sup>1</sup>, Xiuyuan Sun<sup>1</sup>, Youfei Guan<sup>3\*</sup> and Yu Zhang<sup>1,4\*</sup>

<sup>1</sup>Department of Immunology, School of Basic Medical Sciences, Peking University Health Science Center, Key Laboratory of Medical Immunology, Ministry of Health (Peking University), Beijing, China, <sup>2</sup>Department of Oral Pathology, Beijing Stomatological Hospital, Capital Medical University, Beijing, China, <sup>3</sup>Advanced Institute for Medical Sciences, Dalian Medical University, Dalian, China, <sup>4</sup>Institute of Biological Sciences, Jinzhou Medical University, Jinzhou, China

## OPEN ACCESS

### Edited by:

Zhigang Tian,  
University of Science and  
Technology of China, China

### Reviewed by:

Li Wu,  
Tsinghua University, China  
Haiming Wei,  
University of Science and  
Technology of China, China

### \*Correspondence:

Youfei Guan  
youfeiguan@bjmu.edu.cn;  
Yu Zhang  
zhangyu007@bjmu.edu.cn

<sup>†</sup>These authors have contributed  
equally to this work.

### Specialty section:

This article was submitted to  
NK and Innate Lymphoid  
Cell Biology,  
a section of the journal  
Frontiers in Immunology

Received: 08 January 2018

Accepted: 26 February 2018

Published: 12 March 2018

### Citation:

Zhou Y, Wang W, Zhao C, Wang Y,  
Wu H, Sun X, Guan Y and Zhang Y  
(2018) Prostaglandin E<sub>2</sub> Inhibits  
Group 2 Innate Lymphoid Cell  
Activation and Allergic Airway  
Inflammation Through E-Prostanoid  
4-Cyclic Adenosine  
Monophosphate Signaling.  
*Front. Immunol.* 9:501.  
doi: 10.3389/fimmu.2018.00501

Evidence is accumulating that group 2 innate lymphoid cells (ILC2) play an important role in allergic airway inflammation by producing a large amount of type 2 cytokines. But it remains poorly understood how its activities are properly controlled *in vivo*. Here, we demonstrated that prostaglandin E<sub>2</sub> (PGE<sub>2</sub>) had a profound inhibitory effect on IL-33-induced ILC2 expansion and IL-5 and IL-13 production *in vitro*. This effect was mimicked by PGE<sub>1</sub>-alcohol but attenuated by ONO-AE3-208, indicating a selective action through the E-prostanoid 4 (EP4) receptor. In the IL-33-induced asthma model, coadministration of PGE<sub>2</sub> or PGE<sub>1</sub>-alcohol resulted in diminished IL-5 and IL-13 production, reduced eosinophilia and alleviated lung pathology. In contrast, EP4-deficient mice displayed an exacerbated inflammatory response in another ILC2-mediated asthma model induced by *Alternaria* extract. Mechanistic studies demonstrated that the PGE<sub>2</sub>-mediated inhibition of ILC2 was dependent on cyclic adenosine monophosphate (cAMP) production. Further downstream, PGE<sub>2</sub>-EP4-cAMP signaling led to suppression of GATA3 and ST2 expression, which is known to be critical for ILC2 activation. These findings reveal a novel function of PGE<sub>2</sub> as a negative regulator of ILC2 activation and highlight an endogenous counter-regulatory mechanism for the control of innate allergic inflammatory responses.

**Keywords:** group 2 innate lymphoid cell, prostaglandin E<sub>2</sub>, E-prostanoid 4, asthma, IL-33, cyclic adenosine monophosphate

## INTRODUCTION

Asthma is a chronic inflammatory disease of the airways, which affects over 300 million people worldwide. The inflammatory process in asthma is characterized by eosinophil infiltration, airway hyperresponsiveness, and a chronic T helper 2 (Th2) cell-mediated immune response (1). The type 2 cytokines such as IL-4, IL-5, and IL-13 are key players in the pathogenesis of asthma. More specifically, IL-4 promotes Th2 polarization and IgE class switching in B cells (2, 3). IL-5 drives eosinophilia

**Abbreviations:** BALF, bronchoalveolar lavage fluid; EP1–4, E-prostanoid 1–4; db-cAMP, dibutylryl cyclic adenosine monophosphate; HDM, house dust mite; ILC, innate lymphoid cell; ILC2, group 2 innate lymphoid cell; IFN, interferon; OVA, ovalbumin; PG, prostaglandin; Th2, T helper 2; TSLP, thymic stromal lymphopoietin.

in lung tissues by enhancing the development of eosinophils in the bone marrow and their recruitment to the lung (1). And IL-13 is found to be necessary and sufficient for mounting airway hyperreactivity and for mucus overproduction (4).

T helper 2 cells have been long considered as the major source of type 2 cytokines in asthma and little is known about the role of innate immunity in the pathology of asthma until the recent discovery of innate lymphoid cells (ILC) (5–7). ILCs share a lymphoid morphology but lack specific antigen receptors and lineage markers. Three groups of ILC have been defined on the basis of their cytokine secretion profiles. Among them, the group 2 ILC (ILC2) is featured by the capacity to produce large amounts of IL-5 and IL-13 in response to epithelial cell-derived cytokines such as IL-33, IL-25, and thymic stromal lymphopoeitin (TSLP) (8, 9). In addition to a role in protective immunity against parasites, evidence is accumulating that ILC2 participates in the pathogenesis of allergic inflammation. Increased numbers of ILC2 have been observed in inflamed tissues, such as allergic lung tissues in mice (10), and nasal polyps and skin in human subjects (11–13). In fact, ILC2 represents more than half of the IL-5- and IL-13-producing cells in the lungs of mice subjected to ovalbumin (OVA)- or house dust mite (HDM)-induced asthma. The implication of ILC2 in asthma is further demonstrated in various mouse models of asthma induced by *Alternaria* species, papain, HDM, OVA, and  $\alpha$ -GalCer. In these models, ILC2 provokes hyperresponsiveness and goblet cell hyperplasia accompanied with increased eosinophil counts and type 2 cytokines independent of acquired immunity (10, 14–18).

Apart from IL-33, IL-25, and TSLP, ILC2 function is regulated by other cytokines or lipid mediators. TNF superfamily member TL1A, transforming growth factor  $\beta$  (TGF- $\beta$ ), and IL-1 have been shown to enhance the proliferation, type 2 cytokine secretion and/or chemoactivity of ILC2 (19–21). Mice deficient for DR3 (TL1A receptor) or lacking epithelial-derived TGF- $\beta$ 1 exhibit diminished airway inflammation after challenge with allergens. In contrast, both type I and type II interferon (IFN) and IL-27 are able to suppress ILC2 function in a manner dependent on the transcription factor STAT1. Accordingly, ILC2-mediated lung inflammation is enhanced in the absence of the IFN- $\gamma$  receptor *in vivo* (22–24). More intriguingly, ILC2 appears to be functionally plastic, adapting to environmental cues. IL-12, for example, is able to convert IL-1-primed ILC2 into IFN- $\gamma$ -producing ILC1 cells, and this transdifferentiation is reversed by IL-4 (25). As for lipid mediators, ILC2 expresses high levels of CRTH2, a receptor for prostaglandin (PG) D<sub>2</sub>, and CysLTR1, the high-affinity receptor for leukotriene D<sub>4</sub> (LTD<sub>4</sub>). Both PGD<sub>2</sub> and LTD<sub>4</sub> provide activating signals for ILC2, which are nonredundant with IL-33. Defective ILC2-mediated type 2 immune responses are observed in the absence of either PGD<sub>2</sub> or LT signaling (26–29). Unlike PGD<sub>2</sub>, PGI<sub>2</sub> serves as a negative regulator for ILC2 function. IL-5 and IL-13 production by IL-33-stimulated ILC2 is potently inhibited by PGI<sub>2</sub>, whereas deficiency in PGI<sub>2</sub> receptor IP leads to exacerbated lung inflammatory response to the *Alternaria* extract (30). Lipoxin A<sub>4</sub> (LXA<sub>4</sub>), another arachidonic acid metabolite, also appears to exert a suppressive effect on cytokine production by ILC2 through the unconventional ALX receptor. Notably,

severe asthma is associated with decreased expression of LXA<sub>4</sub> and its receptor ALX (31).

Prostaglandin E<sub>2</sub> is one of the most abundantly produced PGs. By acting on one or more receptor subtypes [E-prostanoid (EP) 1–4], PGE<sub>2</sub> affects multiple aspects of immune and inflammatory responses (32). Nevertheless, little is known about its impact on ILC cells except for a recent report in which PGE<sub>2</sub> has been shown to promote the proliferation and IL-22 production of ILC3 (33). The present study was focused on the role of PGE<sub>2</sub> in ILC2 biology. Both IL-33-induced activation of ILC2 and ILC2-mediated lung inflammation were found to be profoundly inhibited by PGE<sub>2</sub>-EP4 signaling, most likely through downregulation of GATA3 and ST2.

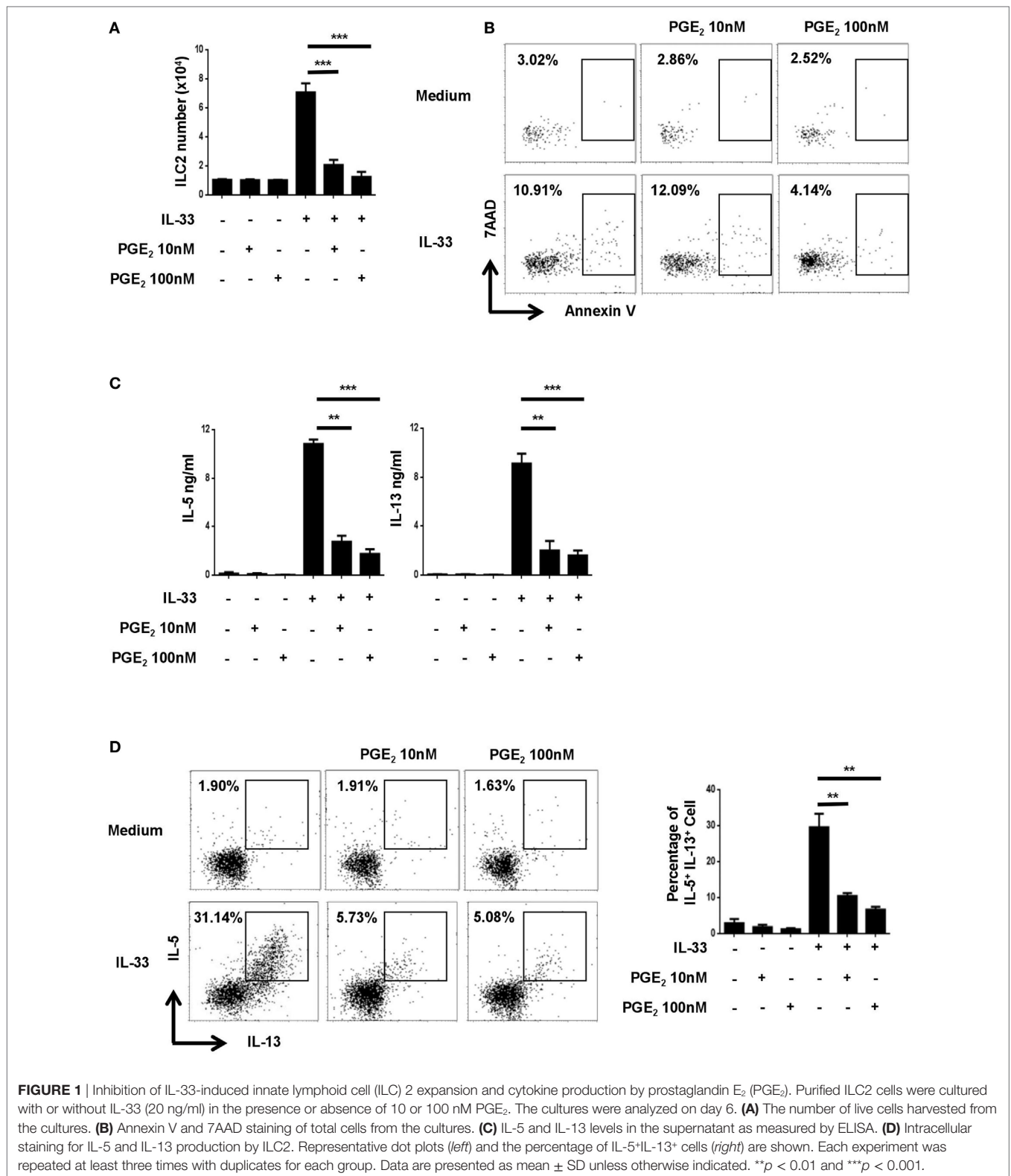
## RESULTS

### PGE<sub>2</sub> Inhibits IL-33-Induced Expansion and Type 2 Cytokine Production of Pulmonary ILC2 Cells

To explore the potential impact of PGE<sub>2</sub> on the activities of ILC2, murine lung ILC2 was isolated by FACS and cultured under various conditions. As previously reported (34), ILC2 cells stimulated with IL-33 underwent drastic expansion and produced a large amount of IL-5 and IL-13 (Figures 1A,C). While PGE<sub>2</sub> displayed no apparent effect on resting ILC2, it markedly inhibited IL-33-induced ILC2 activation. Specifically, IL-33-induced cell expansion was almost completely abolished with the addition of 10–100 nM PGE<sub>2</sub> (Figure 1A). As Annexin V/7AAD staining revealed comparable levels of apoptotic cells in IL-33-stimulated cultures with or without PGE<sub>2</sub> (Figure 1B), the reduced cell number in the presence of PGE<sub>2</sub> most likely resulted from impaired cell proliferation rather than altered cell viability. When cytokine production was assessed, a similar inhibitory effect was observed with an 70% reduction in both IL-13 and IL-5 in the supernatant of PGE<sub>2</sub>-treated cultures (Figure 1C). This decrease was not simply due to fewer ILC2 cells in the cultures. Intracellular staining showed that PGE<sub>2</sub> caused a dose-dependent reduction of IL-5- and IL-13-producing cells in total ILC2 cells (Figure 1D), suggesting that they were functionally inhibited as well. Collectively, these *in vitro* studies demonstrate that PGE<sub>2</sub> acts as a negative regulator for ILC2 activation.

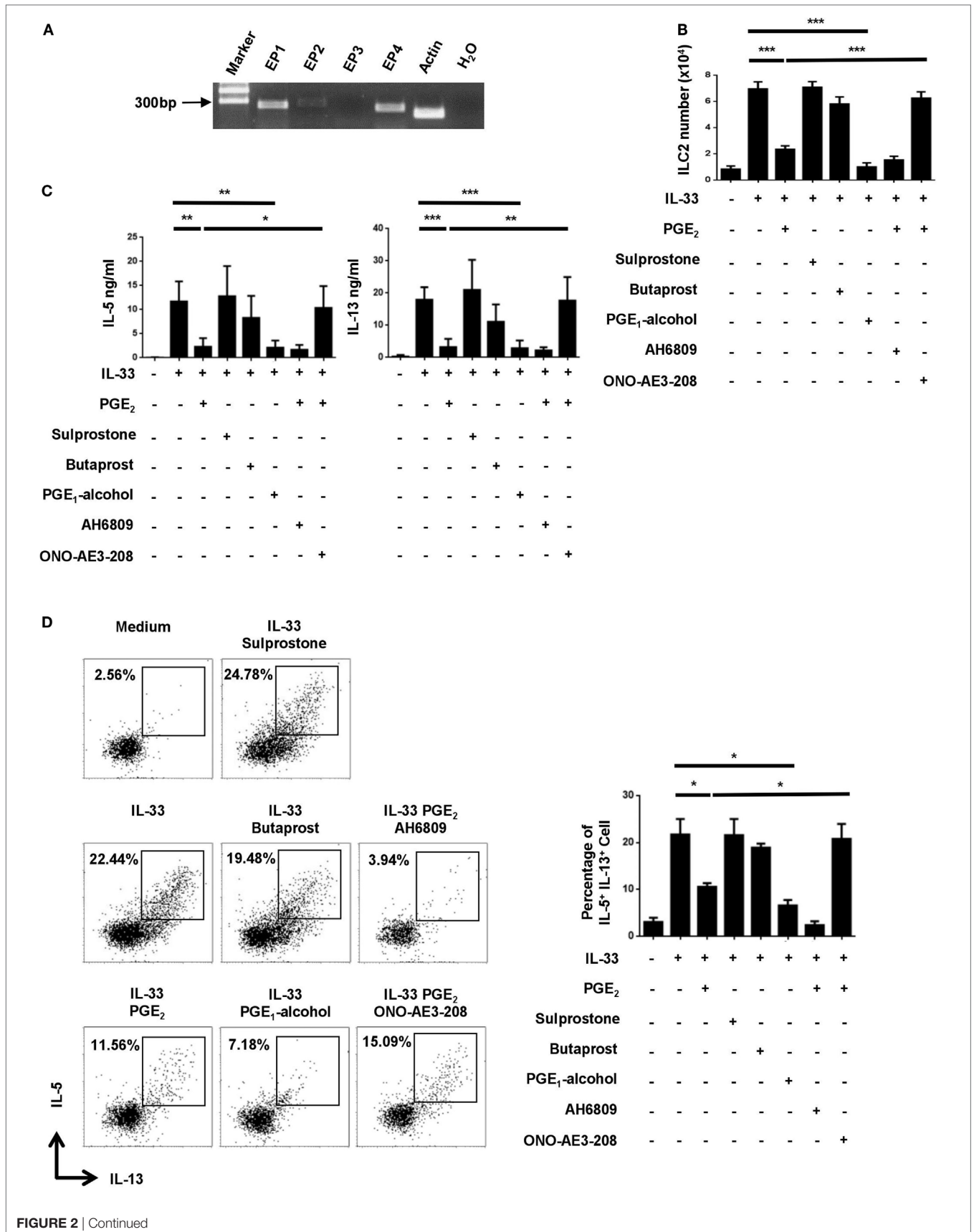
### EP4 Mediates the Inhibitory Effect of PGE<sub>2</sub> on ILC2

Prostaglandin E<sub>2</sub> signals through one of the four functionally distinct receptors, designated EP1, EP2, EP3, and EP4 (32). Their expression in ILC2 was examined by RT-PCR. While *Ptger3* (EP3) mRNA was hardly detected in ILC2, various levels of expression were seen for the other three receptors, with relatively high abundance for *Ptger1* (EP1) and *Ptger4* (EP4) (Figure 2A). To determine which receptor was responsible for PGE<sub>2</sub>-induced inhibition of ILC2, we tested the impact of multiple receptor-selective agonists and antagonists on IL-33-stimulated cultures. EP4 agonist PGE<sub>1</sub>-alcohol was capable of fully mimicking PGE<sub>2</sub> in the assays. As such, similar inhibition was achieved with PGE<sub>2</sub>



and PGE<sub>1</sub>-alcohol for IL-33-driven ILC2 expansion as shown by cell counts (**Figure 2B**) and for IL-5 and IL-13 production as determined by either ELISA (**Figure 2C**) or intracellular

(**Figure 2D**). Sulprostone (EP1/EP3 agonist) and butaprost (EP2 agonist), on the other hand, showed no effect (**Figures 2B–D**). In further support of the key role of EP4, the inhibitory effect





**FIGURE 2** | Implication of the E-prostanoid 4 (EP4) receptor in prostaglandin (PG) E<sub>2</sub>-mediated inhibition of innate lymphoid cell 2 (ILC2). **(A)** mRNA expression for each of the four PGE<sub>2</sub> receptor subtypes in purified ILC2 cells as determined by RT-PCR. Representative results from one out of three independent experiments are shown. **(B–D)** Purified ILC2 cells were stimulated with IL-33 (20 ng/ml) in the presence or absence of PGE<sub>2</sub> (10 nM), sulprostone (1 μM), butaprost (1 μM), PGE<sub>1</sub>-alcohol (1 μM), AH6809 (10 μM), and/or ONO-AE3-208 (10 μM). The cultures were analyzed on day 6. Live cells were numerated by trypan blue exclusion **(B)**. IL-5 and IL-13 levels in the supernatant were measured by ELISA **(C)**. IL-5 and IL-13-secreting cells were detected by intracellular staining **(D)**. Representative dot plots (*left*) and the percentage of IL-5<sup>+</sup>IL-13<sup>+</sup> cells (*right*) are shown. Each experiment was repeated at least three times with duplicates for each group. Data are presented as mean ± SD unless indicated otherwise. \**p* < 0.05; \*\**p* < 0.01; and \*\*\**p* < 0.001.

of PGE<sub>2</sub> was abrogated with EP4 antagonist ONO-AE3-208 but not with EP1/2/3 antagonist AH6809. Of note, neither the agonists nor the antagonists had significant impact on cell viability (Figure S1 in Supplementary Material). These results suggest that PGE<sub>2</sub> primarily signals through the EP4 receptor in ILC2.

### PGE<sub>2</sub> Suppresses IL-33-Induced Type 2 Responses *In Vivo*

In view of its potent inhibitory function *in vitro*, we sought to determine whether PGE<sub>2</sub> affected ILC2-mediated airway inflammation induced by IL-33 (22, 23). Intranasal administration of IL-33 induced rapid and robust type 2 responses characterized by ILC2 accumulation, type 2 cytokine secretion, eosinophilia and goblet cell metaplasia. Such responses were largely diminished when PGE<sub>2</sub> was coadministered with IL-33. In comparison to mice treated with IL-33 alone, those receiving IL-33 + PGE<sub>2</sub> showed approximately 50% reduction in total cells (Figure 3A) and 70% reduction in Siglec-F<sup>+</sup> eosinophils (Figure 3B) in the bronchoalveolar lavage fluid (BALF). In addition, coadministration of PGE<sub>2</sub> led to approximately 60% reduction of both IL-5 and IL-13 in the lavage (Figure 3C). As much as the ILC2 population was concerned, a much diminished accumulation was detected in the lung tissue of PGE<sub>2</sub>-treated mice (Figure 3D). Moreover, ILC2 recovered from these mice contained a significantly lower percentage of IL-5- or IL-13-producing cells (Figure 3E; Figure S2A in Supplementary Material). Furthermore, hematoxylin and eosin (HE) and Periodic Acid-Schiff (PAS) staining of the lung tissue demonstrated that coadministration of PGE<sub>2</sub> ameliorated IL-33-induced lung pathology featured by intensive peribronchial lymphoid infiltration and goblet cell metaplasia (Figure 3F).

CD4<sup>+</sup> T cells represent another important source of type 2 cytokines. To formally exclude their contribution to the airway inflammation induced by short-term treatment with IL-33, flow cytometry was performed to analyze cytokine production by CD4<sup>+</sup> T cells. In agreement with previous studies (30), IL-5- or IL-13-producing cells were barely detectable among CD4<sup>+</sup> cells in the lung tissue following IL-33 administration, irrespective of the presence or absence of PGE<sub>2</sub> (Figure S2B in Supplementary Material). Therefore, PGE<sub>2</sub> primarily exerts its anti-inflammatory effect by acting on ILC2 cells in such a scenario.

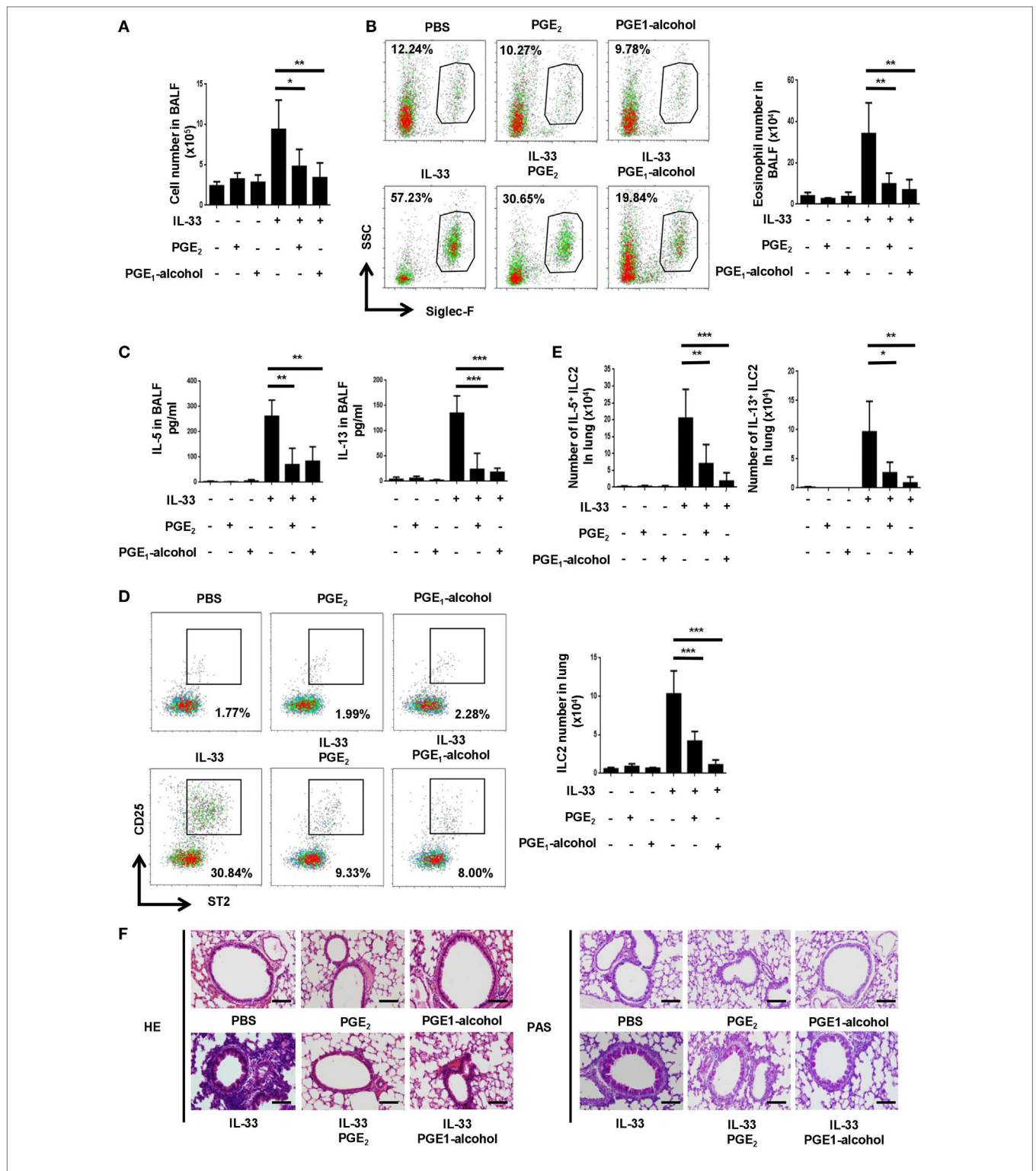
To verify the role of EP4 in PGE<sub>2</sub>-mediated inhibition *in vivo*, a group of mice received EP4 agonist PGE<sub>1</sub>-alcohol in conjunction with IL-33. PGE<sub>1</sub>-alcohol displayed equal potency to PGE<sub>2</sub> in the inhibition of IL-33-induced airway inflammation in all aspects examined, including exudation of eosinophils and other inflammatory cells, accumulation of ILC2, production of IL-5 and IL-13, and lung pathology (Figures 3A–E).

### EP4-Deficiency Leads to Exaggerated Asthmatic Responses to *Alternaria* Extract

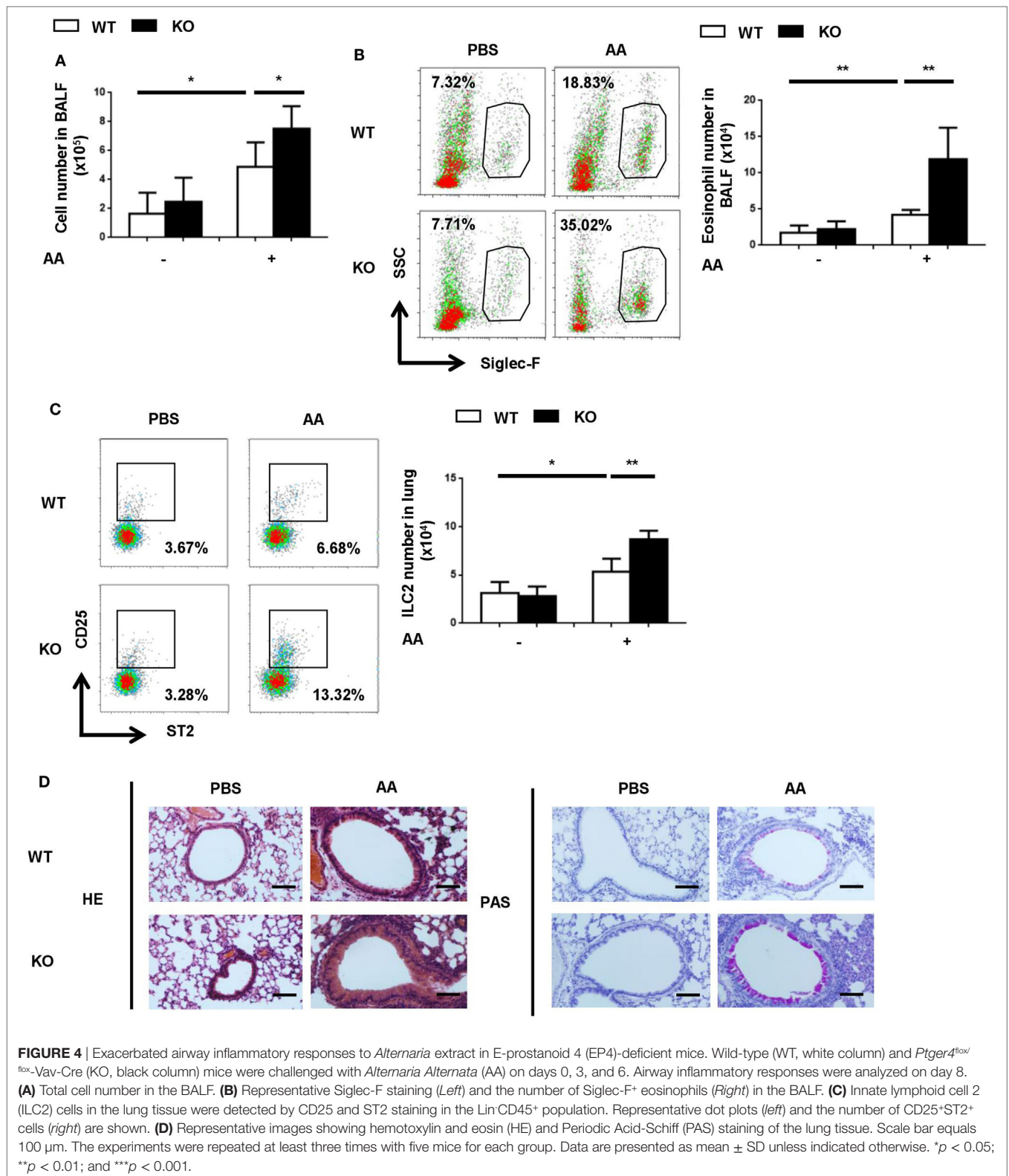
Next, we explored whether endogenous PGE<sub>2</sub> signal participated in the control of ILC2-mediated airway inflammation. Given the key role of EP4 in PGE<sub>2</sub> signaling in ILC2 cells, it was anticipated that its deficiency might result in aggravated inflammation. To test this, *Ptger4*<sup>lox/lox</sup> mice were crossed with Vav-Cre mice to specifically delete *Ptger4* in hematopoietic cells. The deletion efficiency was verified by the greatly reduced expression of *Ptger4* mRNA in total bone marrow cells and CD4<sup>+</sup> T cells in knockout versus wild-type mice (Figure S3 in Supplementary Material). We first compared the wild-type and knockout mice in the IL-33-induced asthma model and found no overt difference between them. In consideration of the possibility that the overwhelming response to IL-33 might prevent the manifestation of potential aggravating effects of EP4 deficiency, we switched to a clinically more relevant model induced by the *Alternaria* extract, for which ILC2 is known to be a key player (35, 36). In comparison to the rapid and potent inflammatory response induced by IL-33, a milder type 2 response was observed following the airway challenge with the *Alternaria* extract. The numbers of total inflammatory cells in the BALF and ILC2 cells in the lung tissue were reduced by half (Figures 4A,C in comparison with Figures 3A,D). An even dramatic difference was seen in terms of eosinophils in the BALF (Figure 4B in comparison with Figure 3B). This allowed us to assess any inflammation-promoting effect introduced by EP4 deficiency. Indeed, the EP4-deficient mice showed increased numbers of ILC2, eosinophils and other inflammatory cells when compared to wild-type mice after challenge with the *Alternaria* extract (Figures 4A–C). Moreover, histological analyses demonstrated more intensive peribronchial lymphoid infiltration and increased mucus production (Figure 4D). These results indicate that the endogenous PGE<sub>2</sub>-EP4 signal is actively involved in the regulation of ILC2-mediated airway inflammation.

### PGE<sub>2</sub>-EP4-Cyclic Adenosine Monophosphate (cAMP) Signaling Inhibits the Expression of GATA3 and ST2

E-prostanoid 4 has been shown to signal through two main pathways, either by triggering cAMP production and subsequent activation of PKA (37) or by engaging the PI3K-Akt pathway (38). To determine which one was involved in ILC2 inhibition, we tested small molecular compounds specifically targeting the two pathways. Dibutyryl cAMP (db-cAMP), a cell-permeable cAMP analog, was able to simulate PGE<sub>2</sub> in ILC2 cultures, leading to



**FIGURE 3** | Attenuation of IL-33-induced airway inflammation by prostaglandin (PG) E<sub>2</sub> and E-prostanoid 4 (EP4) agonist. Mice were treated with IL-33 on days 0 and 2 with or without concomitant administration of PGE<sub>2</sub> or PGE<sub>1</sub>-alcohol. Airway inflammatory responses were analyzed 24 h after the last challenge. **(A)** Total cell number in the bronchoalveolar lavage fluid (BALF). **(B)** Eosinophils in the BALF were detected by Siglec-F staining. Representative dot plots (*left*) and the number of Siglec-F<sup>+</sup> cells (*right*) are shown. **(C)** Levels of IL-5 and IL-13 in BALF were measured by ELISA. **(D)** Innate lymphoid cell 2 (ILC2) cells in the lung tissue were detected by CD25 and ST2 staining in the LinCD45<sup>+</sup> gate. Representative dot plots (*left*) and the number of CD25<sup>+</sup>ST2<sup>+</sup> cells (*right*) are shown. **(E)** The percentage of IL-5<sup>+</sup> or IL-13<sup>+</sup> cells among pulmonary ILC2 cells as determined by intracellular staining. **(F)** Representative images showing hematoxylin and eosin (HE) and Periodic Acid-Schiff (PAS) staining of the lung tissue. Scale bar equals 100 μm. The experiments were repeated at least three times with four mice for the control, PGE<sub>2</sub> and PGE<sub>1</sub>-alcohol group and six mice for the IL-33, IL-33 + PGE<sub>2</sub> and IL-33 + PGE<sub>1</sub>-alcohol group. Data are presented as mean ± SD unless indicated otherwise. \**p* < 0.05; \*\**p* < 0.01; and \*\*\**p* < 0.001.



**FIGURE 4** | Exacerbated airway inflammatory responses to *Alternaria* extract in E-prostanoid 4 (EP4)-deficient mice. Wild-type (WT, white column) and *Ptger4*<sup>fllox/flox</sup>-Vav-Cre (KO, black column) mice were challenged with *Alternaria Alternata* (AA) on days 0, 3, and 6. Airway inflammatory responses were analyzed on day 8. **(A)** Total cell number in the BALF. **(B)** Representative Siglec-F staining (Left) and the number of Siglec-F<sup>+</sup> eosinophils (Right) in the BALF. **(C)** Innate lymphoid cell 2 (ILC2) cells in the lung tissue were detected by CD25 and ST2 staining in the Lin<sup>+</sup>CD45<sup>+</sup> population. Representative dot plots (left) and the number of CD25<sup>+</sup>ST2<sup>+</sup> cells (right) are shown. **(D)** Representative images showing hematoxylin and eosin (HE) and Periodic Acid-Schiff (PAS) staining of the lung tissue. Scale bar equals 100 μm. The experiments were repeated at least three times with five mice for each group. Data are presented as mean ± SD unless indicated otherwise. \**p* < 0.05; \*\**p* < 0.01; and \*\*\**p* < 0.001.

drastic inhibition of the IL-33-driven cell expansion (Figure 5A) and IL-5/IL-13 production (Figures 5B,C). On the other hand, the suppressive activity of PGE<sub>2</sub> remained unaltered in the presence of the PI3K inhibitor LY294002 (39) (Figure S4 in Supplementary

Material). Therefore, PGE<sub>2</sub> primarily functions through the cAMP pathway instead of the PI3K pathway in ILC2 cells.

Similar to Th2 cells, ILC2 relies on the transcription factor GATA3 for its differentiation as well as the maintenance of its

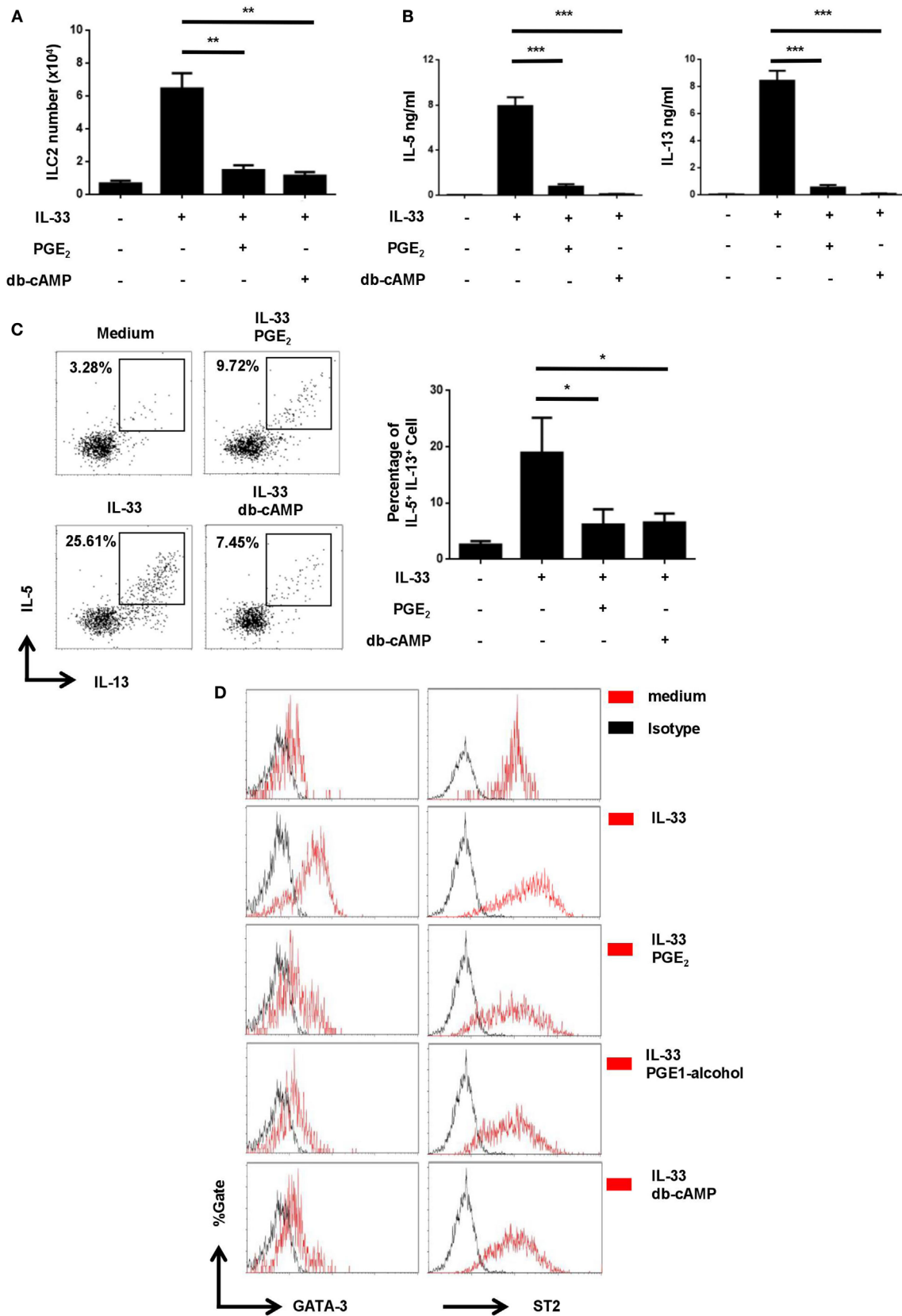


FIGURE 5 | Continued



**FIGURE 5** | Inhibition of IL-33-induced upregulation of GATA3 and ST2 by prostaglandin E<sub>2</sub> (PGE<sub>2</sub>)-E-prostanoid 4 (EP4)-cyclic adenosine monophosphate (cAMP) signaling. Purified innate lymphoid cell (ILC) 2 cells were stimulated with IL-33 (20 ng/ml) in the presence or absence of PGE<sub>2</sub> (10 nM), PGE<sub>1</sub>-alcohol (1 μM), or dibutyl cAMP (db-cAMP) (400 μM) and the cultures were analyzed on day 6. **(A)** The number of live cells harvested from the cultures. **(B)** IL-5 and IL-13 levels in the supernatant as measured by ELISA. **(C)** Intracellular staining for IL-5 and IL-13 production by ILC2. Representative histograms (*left*) and the percentage of IL-5<sup>+</sup>IL-13<sup>+</sup> cells (*right*) are shown. **(D)** Intracellular staining for GATA3 (*left*) and ST2 (*right*). Representative histograms are presented with isotype controls (dash line). Each experiment was repeated at least three times with duplicates for each group. Data are presented as mean ± SD unless indicated otherwise. \**p* < 0.05; \*\**p* < 0.01; and \*\*\**p* < 0.001.

functionality (40). In Th2 cells, IL-33 has been shown to enhance GATA3 expression, which in turn leads to elevated levels of ST2, a component of IL-33 receptor (41). We wondered whether IL-33 had a similar effect in ILC2 and how it was modulated by the PGE<sub>2</sub>-EP4-cAMP signaling. Purified ILC2 cells were thus stimulated with IL-33 in the presence or absence of PGE<sub>2</sub>, PGE<sub>1</sub>-alcohol, or db-cAMP and examined for GATA3 and ST2 expression by intracellular staining. As shown in **Figure 5D**, exposure to IL-33 resulted in an elevated level of GATA3 in ILC2. Further reminiscent of its effect in Th2 cells, IL-33 also induced the upregulation of ST2 expression by ILC2 (**Figure 5D**). Intriguingly, the augmented expression of both GATA3 and ST2 was found to be abrogated with the addition of PGE<sub>2</sub>, PGE<sub>1</sub>-alcohol, or db-cAMP (**Figure 5D**). Therefore, there appears to be a self-amplification mechanism in IL-33 signaling in ILC2 and PGE<sub>2</sub>-EP4-cAMP signaling imposes a break for the positive feedback loop.

## DISCUSSION

The present study revealed a novel function of PGE<sub>2</sub> as a negative regulator of ILC2 activation. When added to ILC2 cultures, PGE<sub>2</sub> profoundly inhibited IL-33-induced cell expansion and type 2 cytokine production in a dose-dependent manner. Moreover, intranasal administration of PGE<sub>2</sub> prevented ILC2 accumulation in the lung and attenuated airway inflammation in an asthma model induced IL-33. As the inhibitory effect was fully mimicked by PGE<sub>1</sub>-alcohol but reverted by a EP4-selective antagonist, PGE<sub>2</sub> appeared to signal exclusively through EP4 in ILC2. In agreement with this speculation, EP4-deficient mice displayed an exacerbated inflammatory response to the airway challenge of *Alternaria* extract. We went further to demonstrate that the PGE<sub>2</sub>-EP4 signaling was primarily mediated by cAMP, which in turn suppressed IL-33-induced upregulation of GATA3, a master transcriptional regulator for the ILC2 lineage.

An increasing body of evidence indicates an important role of lipid mediators, especially those derived from arachidonic acid in orchestrating ILC2 functions under physiological and pathological conditions (42). Arachidonic acid is generated from cell membrane phospholipids by phospholipase A<sub>2</sub> and subsequently converted into leukotrienes by 5-lipoxygenase, lipoxins by 15-lipoxygenase, or PGE<sub>2</sub>, PGI<sub>2</sub>, PGD<sub>2</sub>, PGF<sub>2α</sub>, and thromboxane A<sub>2</sub> by cyclooxygenase (COX)-1/2 and specific PG synthase through two unstable intermediates PGG<sub>2</sub> and PGH<sub>2</sub> (43). PGD<sub>2</sub> and LTD<sub>4</sub> are potent activators of ILC2, triggering production of type 2 cytokines on their own or through synergism with IL-25/33 by inducing intracellular Ca<sup>2+</sup> mobilization (26–29). PGI<sub>2</sub> and LXA<sub>4</sub>, on the other hand, attenuate ILC2 responses to IL-33 *via* inducing cAMP production and ERK

phosphorylation, respectively (30, 31). Here, we reported the identification of PGE<sub>2</sub>, another metabolite of arachidonic acid, as a novel endogenous inhibitor for the activation of murine ILC2 cells. Of note, while this manuscript was in preparation, Maric et al. published their studies of PGE<sub>2</sub> on human ILC2, in which PGE<sub>2</sub> was shown to exert a similar inhibitory effect (44). Their studies were based exclusively on *in vitro* and pharmacological approaches. The present study, on the other hand, also provided *in vivo* and genetic evidence for PGE<sub>2</sub>-mediated inhibition of ILC2 and its implication in airway inflammation. Interestingly, While PGE<sub>2</sub> primarily signals through the EP4 receptor in murine ILC2, both EP2 and EP4 are involved in the response of human ILC2 to PGE<sub>2</sub>. The species difference may partly result from the much lower expression of EP2 in murine ILC2.

Prostaglandin E<sub>2</sub> is known for its diverse and sometimes paradoxical activities on different immune cells at different stages of immune responses (32). For example, while imposing an overall suppressive effect on T cell activation and production, it differentially regulates the lineage specification of CD4<sup>+</sup> effector T cells, shifting the balance away from type 1 toward other forms of immunity, such as Th2, Th17, and Treg responses (39, 45–47). With respect to ILC cells, a recent study by Duffin et al. has demonstrated that PGE<sub>2</sub>-EP4 signaling promotes the homeostasis and IL-22 production of ILC3. Our finding that PGE<sub>2</sub> antagonizes IL-33-induced ILC2 expansion and cytokine production indicates additional complexity of PGE<sub>2</sub>-mediated immunoregulation.

Prostaglandin E<sub>2</sub> and PGI<sub>2</sub> display similar yet distinct properties in their action on ILC2. While they both profoundly inhibit ILC2 proliferation and cytokine production, increased cell death is only observed in PGI<sub>2</sub> but no in PGE<sub>2</sub> cultures. Moreover, although a cAMP-dependent mechanism is shared by PGE<sub>2</sub> and PGI<sub>2</sub>, further downstream targets appear to differ from each other. PGI<sub>2</sub> causes a dramatic reduction of Id2 mRNA expression (30), whereas PGE<sub>2</sub>-mediated ILC2 inhibition is associated with a marked decrease in GATA3 at the protein level. This discrepancy may be partly explained by the different receptors engaged by PGI<sub>2</sub> and PGE<sub>2</sub>. It is well established that GATA3 is essential for early ILC2 development. Besides, sustained GATA3 activity is required for the maintenance and functionality of ILC2 (40, 48). Little is known, however, about the mechanisms governing GATA3 expression in ILC2. A recent study has reported that activation of resting ILC2 by TSLP increased the expression of GATA3 (49). We found that GATA3 expression was also enhanced in ILC2 after stimulation with IL-33. This is consistent with two previous reports in which IL-33 has been shown to upregulate GATA3 expression in Th2 and Treg cells, respectively (41, 50). In the latter case, treatment with IL-33 even induces the conversion of Treg

cells into Th2-like cells (50). Of note, IL-33 stimulation also leads to enhanced expression of its receptor component ST2 in Th2, Treg as well as ILC2 cells. The study by Guo et al. further reveals that GATA3 is directly involved in ST2 upregulation in IL-33 stimulated Th2 cells (41). Taken together, there appears to be a self-amplification mechanism in IL-33 signaling; IL-33 induces GATA3 expression, which in turn results in elevated levels of ST2 and increased responsiveness to IL-33. Despite its apparent beneficial effects, such a mechanism can be problematic if left unchecked. Data shown here indicate that the PGE<sub>2</sub>-EP4-cAMP signaling may serve as a break to prevent hyperactivation of ILC2. Antagonism against IL-33-induced GATA3 expression is centrally positioned in its action. A decrease in GATA3 activity not only directly affects the expression of effector cytokines including IL-5 and IL-13, but also disrupts the self-amplification loop of IL-33 signaling as a result of ST2 suppression. Nevertheless, the actual contribution of reduced GATA3 expression to inhibition of ILC activation remains to be experimentally verified, for example, by observing whether enforced GATA3 expression renders ILC2 resistant to PGE<sub>2</sub>-mediated inhibition, although it is technically challenging due to the limited number of ILC2 cells available. Further studies are also warranted to unravel the mechanisms underlying cAMP-induced reduction of GATA3 expression in ILC2. One candidate could be NF-κB activation, which is known to be important for GATA3 expression and Th2 cell differentiation (51). In view of the striking similarities between the transcriptional programs controlling Th2 and ILC2 cells, it would not be surprising if NF-κB plays a similar role in ILC2.

Prostaglandins, especially PGD<sub>2</sub> and PGE<sub>2</sub>, have been intensively studied for their implications in asthmatic inflammation. While it is generally agreed that PGD<sub>2</sub> accelerates the development of asthma (52, 53), data are controversial regarding the role of PGE<sub>2</sub> in the pathogenesis of asthma. In contrast to the heightened inflammatory responses in COX-1- or COX-2-deficient mice (54), mice lacking mPGES1, an enzyme specific for PGE<sub>2</sub> synthesis, show reduced inflammation in OVA-induced asthma models (55). Another study, however, has demonstrated that mPGES1 deficiency has no significant impact on allergen sensitization and generation of effector T cells but induces marked remodeling of the pulmonary vasculature during chronic exposure to the HDM-derived allergen Der f, indicative of a beneficial effect of PGE<sub>2</sub> in the late phase of asthmatic inflammation (56). Conflicting results have also been obtained in analyses of mice with selective deletion of genes encoding each of the four PGE<sub>2</sub> receptors. Kunikata et al. have reported that, while mice lacking EP1, EP2, or EP4 display an allergic response comparable to that of the wild-type littermates, EP3 deficiency causes much more pronounced airway inflammation. In their model, the EP3 signal primarily influences the elicitation stage by suppressing the release of allergic mediators from mast cells and the production of chemokines by epithelial cells (57). Another study demonstrates that PGE<sub>2</sub> may also exert a protective effect through EP<sub>2</sub> by targeting CD4<sup>+</sup> T cells at the sensitization stage (58). Still another study, however, reveals that the EP<sub>2</sub> signal actually facilitates asthma development, possibly by enhancing IgE production by B cells (59). The discrepancy may be ascribed

to the multifaceted activities of PGE<sub>2</sub> on different cell types at different stages of asthma development. Alternatively, it may be reflective of the nature of asthma as an extraordinarily heterogeneous disease. Two major forms of asthma have been defined in clinic. The atopic asthma is characterized by Th2 cell-mediated responses and IgE production to various allergens. The non-atopic asthma, on the other hand, is independent on adaptive immunity (1). Instead, it is often associated with hyperactivation of ILC2. Consistent with the potent inhibitory activity of PGE<sub>2</sub>-EP4 signaling on ILC2 *in vitro*, intranasal administration of PGE<sub>2</sub> or the EP4-selective agonist PGE<sub>1</sub>-alcohol attenuates IL-33-induced allergy *in vivo* as demonstrated by the reduced number of eosinophils and other inflammatory cells in BALF and improved histology of the lung tissue. On the other hand, EP4 deficiency results in a more severe airway inflammation when challenged with *Alternaria* extract. These data suggest a prosolving role of PGE<sub>2</sub> in ILC2-mediated allergic inflammation. It would be interesting to explore any potential defects in the PGE<sub>2</sub>-EP4 signaling pathway in severe, non-atopic asthma induced, for example, by environmental pollutants, irritants, chronic airway mycosis, or repetitive viral infection.

In conclusion, the present study identifies new cellular targets and mechanisms for PGE<sub>2</sub> in the regulation of asthma pathobiology. Its anti-inflammatory actions suggest a potential therapeutic strategy in asthma for which ILC2 plays a predominant role.

## MATERIALS AND METHODS

### Mice

C57BL/6 mice were brought from Vital River Laboratories and were bred in the animal breeding facility at Peking University Health Science Center under specific pathogen-free conditions. To generate mice with selective EP4 deficiency in hematopoietic cells, *Ptger4*<sup>fllox/fllox</sup> mice (60) were crossed with Vav-Cre mice (The Jackson Laboratory, line 8610), both on C57BL/6 background. The experimental procedures on use and care of animals had been approved by the Ethics Committee of Peking University Health Science Center.

### Antibodies and Reagents

Biotin-conjugated anti-CD4 (GK1.5), CD8 (53-6.7), CD5 (53-7.3), TCRβ (H57-597), CD11b (M1/70), CD11c (N418), Gr-1 (RB6-8C5), B220 (RA3-6B2), TER119 (TER-119), FcεRIα (MAR-1), APC-conjugated anti-ST2 (RMST2-2), PE-conjugated anti-CD25 (PC61.5), PerCP-Cyanine5.5-conjugated anti-IL-5 (TRFK5), PE-Cyanine7-conjugated GATA-3 (TWAJ), and PE-Cyanine5.5-conjugated anti-IL-13 (eBio13A) were purchased from eBioscience. PE-conjugated anti-CD25 (7D4) and PerCP-Cyanine5.5-conjugated anti-CD45 (30-F11) were purchased from BD Pharmingen. FITC-conjugated and APC-conjugated streptavidin, recombinant mIL-33 were purchased from BioLegend. Recombinant mIL-2 and mIL-7 were purchased from R&D. APC-conjugated anti-ST2 (DJ8) was purchased from MD Bioproducts. PE-conjugated anti-Siglec-F (ES22-10D8) and Streptavidin MicroBeads were purchased from MiltenyiBiotec. PGE<sub>2</sub>, sulprostone, butaprost, PGE<sub>1</sub>-alcohol,

AH6809, and ONO-AE3-208 were purchased from Cayman Chemical. Dibutyryl cAMP (db-cAMP) was purchased from Sigma-Aldrich.

## Flow Cytometry

Pulmonary cells were stained for lineage markers (TCR $\beta$ , CD4, CD8, CD5, B220, CD11b, CD11c, Gr-1, TER119, Fc $\epsilon$ RI $\alpha$ ), CD45, CD25 and ST2. ILC2 were defined as CD25 and ST2 double positive cells in the Lin<sup>-</sup>CD45<sup>+</sup> gate. Annexin V and 7AAD staining was performed to detect apoptotic cells following recommendations of the manufacturer. Flow cytometric analysis was performed on Gallios Beckman Coulter using Kaluza software. Lung ILC2s were sorted using FACS Aria (BD Bioscience).

## Cell Preparation

Bronchoalveolar cells were prepared by lavaging lungs with 2  $\times$  0.5 ml PBS. To obtain whole pulmonary cells, finely chopped lung tissues were incubated in RPMI 1640 containing 0.5 mg/ml DNase I (Sigma Aldrich), 1 mg/ml Collagenase D (Roche) for 1 h at 37°C with gentle shaking. Cell suspensions were obtained by passing through a 100  $\mu$ m strainer. Mononuclear cells were isolated with a Percoll gradient (GE Healthcare) by harvesting cells at densities between 35 and 70% after centrifugation at 500 g for 20 min at room temperature.

## Airway Inflammation Models and Analytical Procedures

To induce airway inflammation, mice were anesthetized with pentobarbitalum natricum and received intranasal treatment with IL-33 (1  $\mu$ g per mouse) on day 0 and day 2. The animals were sacrificed 24 h after the last challenge. The *Alternaria* induced asthma model was generated as described (22, 28). Briefly, mice were intranasally challenged with *Alternaria* extract (100  $\mu$ g per mouse, Greer Labs) on days 0, 3, and 6. The animals were sacrificed on day 8. BALF was collected after flushing with 2  $\times$  500  $\mu$ l PBS and analyzed for the presence of inflammatory cells and cytokine levels. The number of ILC2 cells in the lung was determined by flow cytometry. To detect IL-5/IL-13-secreting cells, lung cells were cultured in medium contain 20 ng/ml PMA and 10  $\mu$ g/ml ionomycin with GolgiStop (BD Bioscience) for 6 h and then analyzed by flow cytometry after surface staining for lineage markers and intracellular staining of IL-5 and IL-13. For histology, lung tissues were fixed in 4% paraformaldehyde and stained following standard protocols for HE and PAS. In some experiments, PGE<sub>2</sub> (300 mg/kg) and PGE<sub>1</sub>-alcohol (500 mg/kg) was administered concomitantly with IL-33 or *Alternaria* extract.

## Culture of ILC2s and Measurement of Cytokines

Purified pulmonary ILC2s were seeded into 96-well round bottomed cell culture plates and allowed to rest for at least 24 h in RPMI 1640 supplemented with 10% FBS, 0.05 mM 2-mercaptoethanol, 100  $\mu$ g/ml penicillin and streptomycin, 10 mM HEPES and 10 ng/ml IL-2 and IL-7. The cells were then replated

at a density of 2,000–2,500/well and stimulated with 20 ng/ml IL-33 in the absence of IL-2 and IL-7. When applicable, PGE<sub>2</sub> was added at 10–100 nM, sulprostone, butaprost, PGE<sub>1</sub>-alcohol at 1  $\mu$ M, AH6809 and ONO-AE3-208 at 10  $\mu$ M, and db-cAMP at 400  $\mu$ M. After 6 days culture, the concentration of IL-5 and IL-13 in the supernatant was determined using ELISA Ready-SET-Go! Kits (eBioscience). Live cells were counted by trypan blue staining and apoptosis was analyzed by Annexin V and 7AAD staining. For analysis of cytokine production by individual cells, the culture was stimulated for another 6 h using 20 ng/ml PMA and 10  $\mu$ g/ml Ionomycin with GolgiStop (BD Bioscience) prior to intracellular staining for IL-5 and IL-13.

## Gene Expression Analysis by PCR

RNA was prepared from sorted ILC2s using the Rneasy Mini Kit (Qiagen). cDNA was synthesized using the AMV cDNA Reverse Transcription Kit (Promega). PCR was performed with primers as follows: EP1 (5'-ATGGTCTTCTTCGGCCTGTG-3' and 5'-TAAAACACCAGGTGCCAGGG-3'), EP2 (5'-TCACC TTCGCCATATGCTCC-3' and 5'-GGCACTGGACTGGGTAG AAC-3'), EP3 (5'-TCTGTTGGTCGCCGCTATTG-3' and 5'-G GTGTGGTCTCTGATCTGGC-3'), EP4 (5'-TTGCTTCCAG GTTCGCATGG-3' and 5'-AGTTTCACTGGGAATGTGAC T-3'), and  $\beta$ -actin (5'-AGAGGGAAATCGTGCGTGAC-3' and 5'-CAATAGTGATGACCTGGCCGT-3').

## Statistics

All the experiments were repeated at least three times. For statistical analysis, paired and unpaired Student's *t*-test was performed using GraphPad Prism 6 (GraphPad Software). \**p* < 0.05; \*\**p* < 0.01; and \*\*\**p* < 0.001.

## ETHICS STATEMENT

This study was carried out in accordance with the recommendations of Ethics Committee of Peking University Health Science Center. The protocol was approved by the Ethics Committee of Peking University Health Science Center.

## AUTHOR CONTRIBUTIONS

YZhou, WW, YG, and YZhang designed the project. YZhou and WW did the experiment. YZhou, WW, and YZhang wrote the manuscript. YG applied the EP4flox/flox mice. CZ contributed to the pathology analysis. YW and HW contributed to establish the asthma model. XS contributed to ILC2s sorting.

## ACKNOWLEDGMENTS

We thank Xue-Wen Pang, Xiao-Ping Qian, and Yan Li for their excellent technical assistance. This work was supported by grants from National Natural Sciences Foundation of China (91642117, 31330025, and 31100642), National Basic Research Program of



China (2015CB943201), the 111 Project of China (B07001), and Beijing Natural Science Foundation (7112078).

## SUPPLEMENTARY MATERIAL

The Supplementary Material for this article can be found online at <http://www.frontiersin.org/articles/10.3389/fimmu.2018.00501/full#supplementary-material>.

**FIGURE S1** | Unaltered cell viability following exposure to PGE<sub>2</sub>, PGE<sub>2</sub> agonists, and/or PGE<sub>2</sub> antagonists. ILC2 cell culture was established as described in **Figure 2**. Cell viability was examined on day 6 by Annexin V and 7AAD staining. Representative dot plots are shown.

## REFERENCES

- Lambrecht BN, Hammad H. The immunology of asthma. *Nat Immunol* (2015) 16:45–56. doi:10.1038/ni.3049
- Wu LC, Zarrin AA. The production and regulation of IgE by the immune system. *Nat Rev Immunol* (2014) 14:247–59. doi:10.1038/nri3632
- Walker JA, McKenzie ANJ. TH2 cell development and function. *Nat Rev Immunol* (2018) 18(2):121–33. doi:10.1038/nri.2017.118
- Kuperman DA, Huang X, Koth LL, Chang GH, Dolganov GM, Zhu Z, et al. Direct effects of interleukin-13 on epithelial cells cause airway hyper-reactivity and mucus overproduction in asthma. *Nat Med* (2002) 8:885–9. doi:10.1038/nm734
- Moro K, Yamada T, Tanabe M, Takeuchi T, Ikawa T, Kawamoto H, et al. Innate production of T(H)2 cytokines by adipose tissue-associated c-Kit(+)/Sca-1(+) lymphoid cells. *Nature* (2010) 463:540–4. doi:10.1038/nature08636
- Neill DR, Wong SH, Bellosi A, Flynn RJ, Daly M, Langford TK, et al. Nuocytes represent a new innate effector leukocyte that mediates type-2 immunity. *Nature* (2010) 464:1367–70. doi:10.1038/nature08900
- Price AE, Liang HE, Sullivan B, Reinhardt RL, Easley CJ, Erle DJ, et al. Systemically dispersed innate IL-13-expressing cells in type 2 immunity. *Proc Natl Acad Sci U S A* (2010) 107:11489–94. doi:10.1073/pnas.1003988107
- Artis D, Spits H. The biology of innate lymphoid cells. *Nature* (2015) 517:293–301. doi:10.1038/nature14189
- Spits H, Cupedo T. Innate lymphoid cells: emerging insights in development, lineage relationships, and function. *Annu Rev Immunol* (2012) 30:647–75. doi:10.1146/annurev-immunol-020711-075053
- Halim TY, Krauss RH, Sun AC, Takei F. Lung natural helper cells are a critical source of Th2 cell-type cytokines in protease allergen-induced airway inflammation. *Immunity* (2012) 36:451–63. doi:10.1016/j.immuni.2011.12.020
- Mjosberg JM, Trifari S, Crellin NK, Peters CP, van Drunen CM, Piet B, et al. Human IL-25- and IL-33-responsive type 2 innate lymphoid cells are defined by expression of CRTH2 and CD161. *Nat Immunol* (2011) 12:1055–62. doi:10.1038/ni.2104
- Salimi M, Barlow JL, Saunders SP, Xue L, Gutowska-Owsiak D, Wang X, et al. A role for IL-25 and IL-33-driven type-2 innate lymphoid cells in atopic dermatitis. *J Exp Med* (2013) 210:2939–50. doi:10.1084/jem.20130351
- Kim BS, Siracusa MC, Saenz SA, Noti M, Monticelli LA, Sonnenberg GF, et al. TSLP elicits IL-33-independent innate lymphoid cell responses to promote skin inflammation. *Sci Transl Med* (2013) 5:170ra116. doi:10.1126/scitranslmed.3005374
- Bartemes KR, Iijima K, Kobayashi T, Kephart GM, McKenzie AN, Kita H. IL-33-responsive lineage- CD25+ CD44(hi) lymphoid cells mediate innate type 2 immunity and allergic inflammation in the lungs. *J Immunol* (2012) 188:1503–13. doi:10.4049/jimmunol.1102832
- Klein Wolterink RG, Kleinjan A, van Nimwegen M, Bergen I, de Bruijn M, Levani Y, et al. Pulmonary innate lymphoid cells are major producers of IL-5 and IL-13 in murine models of allergic asthma. *Eur J Immunol* (2012) 42:1106–16. doi:10.1002/eji.201142018
- Chang YJ, Kim HY, Albacker LA, Baumgarth N, McKenzie AN, Smith DE, et al. Innate lymphoid cells mediate influenza-induced airway hyper-reactivity independently of adaptive immunity. *Nat Immunol* (2011) 12:631–8. doi:10.1038/ni.2045
- Barlow JL, Bellosi A, Hardman CS, Drynan LF, Wong SH, Cruickshank JP, et al. Innate IL-13-producing nuocytes arise during allergic lung inflammation and contribute to airways hyperreactivity. *J Allergy Clin Immunol* (2012) 129:191–8.e191–4. doi:10.1016/j.jaci.2011.09.041
- Kim HY, Chang YJ, Subramanian S, Lee HH, Albacker LA, Matangkasombut P, et al. Innate lymphoid cells responding to IL-33 mediate airway hyperreactivity independently of adaptive immunity. *J Allergy Clin Immunol* (2012) 129:216–27.e211–6. doi:10.1016/j.jaci.2011.10.036
- Yu X, Pappu R, Ramirez-Carrozzi V, Ota N, Caplazi P, Zhang J, et al. TNF superfamily member TL1A elicits type 2 innate lymphoid cells at mucosal barriers. *Mucosal Immunol* (2014) 7:730–40. doi:10.1038/mi.2013.92
- Denney L, Byrne AJ, Shea TJ, Buckley JS, Pease JE, Herledan GM, et al. Pulmonary epithelial cell-derived cytokine TGF-beta1 is a critical cofactor for enhanced innate lymphoid cell function. *Immunity* (2015) 43:945–58. doi:10.1016/j.immuni.2015.10.012
- Ohne Y, Silver JS, Thompson-Snipes L, Collet MA, Blanck JP, Cantarel BL, et al. IL-1 is a critical regulator of group 2 innate lymphoid cell function and plasticity. *Nat Immunol* (2016) 17:646–55. doi:10.1038/ni.3447
- Moro K, Kabata H, Tanabe M, Koga S, Takeno N, Mochizuki M, et al. Interferon and IL-27 antagonize the function of group 2 innate lymphoid cells and type 2 innate immune responses. *Nat Immunol* (2016) 17:76–86. doi:10.1038/ni.3309
- Duerr CU, McCarthy CD, Mindt BC, Rubio M, Meli AP, Pothlichet J, et al. Type I interferon restricts type 2 immunopathology through the regulation of group 2 innate lymphoid cells. *Nat Immunol* (2016) 17:65–75. doi:10.1038/ni.3308
- Kudo F, Ikutani M, Seki Y, Otsubo T, Kawamura YI, Dohi T, et al. Interferon-γ constrains cytokine production of group 2 innate lymphoid cells. *Immunology* (2015) 147(1):21–9. doi:10.1111/imm.12537
- Bal SM, Bernink JH, Nagasawa M, Groot J, Shikhaie MM, Golebski K, et al. IL-1beta, IL-4 and IL-12 control the fate of group 2 innate lymphoid cells in human airway inflammation in the lungs. *Nat Immunol* (2016) 17:636–45. doi:10.1038/ni.3444
- Xue L, Salimi M, Panse I, Mjosberg JM, McKenzie AN, Spits H, et al. Prostaglandin D2 activates group 2 innate lymphoid cells through chemoattractant receptor-homologous molecule expressed on TH2 cells. *J Allergy Clin Immunol* (2014) 133:1184–94. doi:10.1016/j.jaci.2013.10.056
- Tait Wojno ED, Monticelli LA, Tran SV, Alenghat T, Osborne LC, Thome JJ, et al. The prostaglandin D receptor CRTH2 regulates accumulation of group 2 innate lymphoid cells in the inflamed lung. *Mucosal Immunol* (2015) 8(6):1313–23. doi:10.1038/mi.2015.21
- Doherty TA, Khorram N, Lund S, Mehta AK, Croft M, Broide DH. Lung type 2 innate lymphoid cells express cysteinyl leukotriene receptor 1, which regulates TH2 cytokine production. *J Allergy Clin Immunol* (2013) 132:205–13. doi:10.1016/j.jaci.2013.03.048
- von Moltke J, O'Leary CE, Barrett NA, Kanaoka Y, Austen KF, Locksley RM. Leukotrienes provide an NFAT-dependent signal that synergizes with



- IL-33 to activate ILC2s. *J Exp Med* (2017) 214(1):27–37. doi:10.1084/jem.20161274
30. Zhou W, Toki S, Zhang J, Goleniewska K, Newcomb DC, Cephus JY, et al. Prostaglandin I<sub>2</sub> signaling and inhibition of group 2 innate lymphoid cell responses. *Am J Respir Crit Care Med* (2016) 193:31–42. doi:10.1164/rccm.201410-1793OC
  31. Barnig C, Cernadas M, Dutile S, Liu X, Perrella MA, Kazani S, et al. Lipoxin A<sub>4</sub> regulates natural killer cell and type 2 innate lymphoid cell activation in asthma. *Sci Trans Med* (2013) 5:174ra126. doi:10.1126/scitranslmed.3004812
  32. Kalinski P. Regulation of immune responses by prostaglandin E<sub>2</sub>. *J Immunol* (2012) 188:21–8. doi:10.4049/jimmunol.1101029
  33. Duffin R, O'Connor RA, Crittenden S, Forster T, Yu C, Zheng X, et al. Prostaglandin E(2) constrains systemic inflammation through an innate lymphoid cell-IL-22 axis. *Science* (2016) 351:1333–8. doi:10.1126/science.aad9903
  34. Moro K, Ealey KN, Kabata H, Koyasu S. Isolation and analysis of group 2 innate lymphoid cells in mice. *Nat Protoc* (2015) 10:792–806. doi:10.1038/nprot.2015.047
  35. Kim HK, Lund S, Baum R, Rosenthal P, Khorram N, Doherty TA. Innate type 2 response to *Alternaria* extract enhances ryegrass-induced lung inflammation. *Int Arch Allergy Immunol* (2014) 163:92–105. doi:10.1159/000356341
  36. McSorley HJ, Blair NE, Smith KA, McKenzie AN, Maizels RM. Blockade of IL-33 release and suppression of type 2 innate lymphoid cell responses by helminth secreted products in airway allergy. *Mucosal Immunol* (2014) 7:1068–78. doi:10.1038/mi.2013.123
  37. Fujino H, Salvi S, Regan JW. Differential regulation of phosphorylation of the cAMP response element-binding protein after activation of EP2 and EP4 prostanoid receptors by prostaglandin E<sub>2</sub>. *Mol Pharmacol* (2005) 68:251–9. doi:10.1124/mol.105.011833
  38. Fujino H, Xu W, Regan JW. Prostaglandin E<sub>2</sub> induced functional expression of early growth response factor-1 by EP<sub>4</sub>, but not EP<sub>2</sub>, prostanoid receptors via the phosphatidylinositol 3-kinase and extracellular signal-regulated kinases. *J Biol Chem* (2003) 278:12151–6. doi:10.1074/jbc.M212665200
  39. Yao C, Sakata D, Esaki Y, Li Y, Matsuoka T, Kuroiwa K, et al. Prostaglandin E<sub>2</sub>-EP<sub>4</sub> signaling promotes immune inflammation through Th1 cell differentiation and Th17 cell expansion. *Nat Med* (2009) 15:633–40. doi:10.1038/nm.1968
  40. Hoyler T, Klose CS, Souabni A, Turqueti-Neves A, Pfeifer D, Rawlins EL, et al. The transcription factor GATA-3 controls cell fate and maintenance of type 2 innate lymphoid cells. *Immunity* (2012) 37:634–48. doi:10.1016/j.immuni.2012.06.020
  41. Guo L, Wei G, Zhu J, Liao W, Leonard WJ, Zhao K, et al. IL-1 family members and STAT activators induce cytokine production by Th<sub>2</sub>, Th<sub>17</sub>, and Th<sub>1</sub> cells. *Proc Natl Acad Sci U S A* (2009) 106:13463–8. doi:10.1073/pnas.0906988106
  42. Konya V, Mjosberg J. Lipid mediators as regulators of human ILC2 function in allergic diseases. *Immunol Lett* (2016) 179:36–42. doi:10.1016/j.imlet.2016.07.006
  43. Sakata D, Yao C, Narumiya S. Emerging roles of prostanoids in T cell-mediated immunity. *IUBMB Life* (2010) 62:591–6. doi:10.1002/iub.356
  44. Maric J, Ravindran A, Mazzurana L, Bjorklund AK, Van Acker A, Rao A, et al. PGE<sub>2</sub> suppresses human group 2 innate lymphoid cell function. *J Allergy Clin Immunol* (2017). doi:10.1016/j.jaci.2017.09.050
  45. Yao C, Hirata T, Soontrapa K, Ma X, Takemori H, Narumiya S. Prostaglandin E(2) promotes Th1 differentiation via synergistic amplification of IL-12 signaling by cAMP and PI3-kinase. *Nat Commun* (2013) 4:1685. doi:10.1038/ncomms2684
  46. Boniface K, Bak-Jensen KS, Li Y, Blumenschein WM, McGeachy MJ, McClanahan TK, et al. Prostaglandin E<sub>2</sub> regulates Th17 cell differentiation and function through cyclic AMP and EP<sub>2</sub>/EP<sub>4</sub> receptor signaling. *J Exp Med* (2009) 206:535–48. doi:10.1084/jem.20082293
  47. Baratelli F, Lin Y, Zhu L, Yang SC, Heuze-Vourc'h N, Zeng G, et al. Prostaglandin E<sub>2</sub> induces FOXP3 gene expression and T regulatory cell function in human CD4<sup>+</sup> T cells. *J Immunol* (2005) 175:1483–90. doi:10.4049/jimmunol.175.3.1483
  48. Mjosberg J, Bernink J, Golebski K, Karrich JJ, Peters CP, Blom B, et al. The transcription factor GATA3 is essential for the function of human type 2 innate lymphoid cells. *Immunity* (2012) 37:649–59. doi:10.1016/j.immuni.2012.08.015
  49. Kabata H, Moro K, Fukunaga K, Suzuki Y, Miyata J, Masaki K, et al. Thymic stromal lymphopoietin induces corticosteroid resistance in natural helper cells during airway inflammation. *Nat Commun* (2013) 4:2675. doi:10.1038/ncomms3675
  50. Chen CC, Kobayashi T, Iijima K, Hsu FC, Kita H. IL-33 dysregulates regulatory T cells and impairs established immunologic tolerance in the lungs. *J Allergy Clin Immunol* (2017) 140:1351–63.e7. doi:10.1016/j.jaci.2017.01.015
  51. Das J, Chen CH, Yang L, Cohn L, Ray P, Ray A. A critical role for NF- $\kappa$ B in GATA3 expression and Th<sub>2</sub> differentiation in allergic airway inflammation. *Nat Immunol* (2001) 2:45–50. doi:10.1038/83158
  52. Kagawa S, Fukunaga K, Oguma T, Suzuki Y, Shiomi T, Sayama K, et al. Role of prostaglandin D<sub>2</sub> receptor CRTH<sub>2</sub> in sustained eosinophil accumulation in the airways of mice with chronic asthma. *Int Arch Allergy Immunol* (2011) 155(Suppl 1):6–11. doi:10.1159/000327257
  53. Arima M, Fukuda T. Prostaglandin D<sub>2</sub> receptors DP and CRTH<sub>2</sub> in the pathogenesis of asthma. *Curr Mol Med* (2008) 8:365–75. doi:10.2174/156652408785160970
  54. Gavett SH, Madison SL, Chulada PC, Scarborough PE, Qu W, Boyle JE, et al. Allergic lung responses are increased in prostaglandin H synthase-deficient mice. *J Clin Invest* (1999) 104:721–32. doi:10.1172/JCI6890
  55. Church RJ, Jania LA, Koller BH. Prostaglandin E(2) produced by the lung augments the effector phase of allergic inflammation. *J Immunol* (2012) 188:4093–102. doi:10.4049/jimmunol.1101873
  56. Lundequist A, Nallamshetty SN, Xing W, Feng C, Laidlaw TM, Uematsu S, et al. Prostaglandin E(2) exerts homeostatic regulation of pulmonary vascular remodeling in allergic airway inflammation. *J Immunol* (2010) 184:433–41. doi:10.4049/jimmunol.0902835
  57. Kunikata T, Yamane H, Segi E, Matsuoka T, Sugimoto Y, Tanaka S, et al. Suppression of allergic inflammation by the prostaglandin E receptor subtype EP<sub>3</sub>. *Nat Immunol* (2005) 6:524–31. doi:10.1038/ni1188
  58. Zaslonka Z, Okunishi K, Bourdonnay E, Domingo-Gonzalez R, Moore BB, Lukacs NW, et al. Prostaglandin E(2) suppresses allergic sensitization and lung inflammation by targeting the E prostanoid 2 receptor on T cells. *J Allergy Clin Immunol* (2014) 133:379–87. doi:10.1016/j.jaci.2013.07.037
  59. Gao Y, Zhao C, Wang W, Jin R, Li Q, Ge Q, et al. Prostaglandins E<sub>2</sub> signal mediated by receptor subtype EP<sub>2</sub> promotes IgE production in vivo and contributes to asthma development. *Sci Rep* (2016) 6:20505. doi:10.1038/srep20505
  60. Schneider A, Guan Y, Zhang Y, Magnuson MA, Pettepher C, Loftin CD, et al. Generation of a conditional allele of the mouse prostaglandin EP<sub>4</sub> receptor. *Genesis* (2004) 40:7–14. doi:10.1002/gene.20048

**Conflict of Interest Statement:** The authors declare that the research was conducted in the absence of any commercial or financial relationships that could be construed as a potential conflict of interest.

The reviewer HW and handling Editor declared their shared affiliation.

Copyright © 2018 Zhou, Wang, Zhao, Wang, Wu, Sun, Guan and Zhang. This is an open-access article distributed under the terms of the Creative Commons Attribution License (CC BY). The use, distribution or reproduction in other forums is permitted, provided the original author(s) and the copyright owner are credited and that the original publication in this journal is cited, in accordance with accepted academic practice. No use, distribution or reproduction is permitted which does not comply with these terms.