



Oral Administration of the Probiotic Strain *Escherichia coli* Nissle 1917 Reduces Susceptibility to Neuroinflammation and Repairs Experimental Autoimmune Encephalomyelitis-Induced Intestinal Barrier Dysfunction

OPEN ACCESS

Edited by:

Robert Weissert,
University of Regensburg,
Germany

Reviewed by:

Irun R. Cohen,
Weizmann Institute of
Science, Israel
Gurumoorthy Krishnamoorthy,
Max Planck Institute of
Neurobiology (MPG), Germany

***Correspondence:**

Abdelhadi Saoudi
abdelhadi.saoudi@inserm.fr

[†]These authors have contributed
equally to this work.

Specialty section:

This article was submitted
to Multiple Sclerosis and
Neuroimmunology,
a section of the journal
Frontiers in Immunology

Received: 20 June 2017

Accepted: 22 August 2017

Published: 14 September 2017

Citation:

Secher T, Kassem S, Benamar M,
Bernard I, Boury M, Barreau F,
Oswald E and Saoudi A (2017) Oral
Administration of the Probiotic Strain
Escherichia coli Nissle 1917 Reduces
Susceptibility to Neuroinflammation
and Repairs Experimental
Autoimmune Encephalomyelitis-
Induced Intestinal Barrier
Dysfunction.
Front. Immunol. 8:1096.
doi: 10.3389/fimmu.2017.01096

Thomas Secher^{1†}, Sahar Kassem^{2†}, Mehdi Benamar², Isabelle Bernard², Michele Boury¹,
Frederick Barreau¹, Eric Oswald^{1,3} and Abdelhadi Saoudi^{2*}

¹IRSD, Université de Toulouse, INSERM, INRA, ENVT, UPS, Toulouse, France, ²Centre de Physiopathologie de Toulouse
Purpan (CPTP), Université de Toulouse, UPS, INSERM, CNRS, Toulouse, France, ³CHU Toulouse, Hôpital Purpan, Service
de Bactériologie-Hygiène, Toulouse, France

Multiple sclerosis (MS) is a chronic inflammatory disease of the central nervous system (CNS) with an increasing incidence in developed countries. Recent reports suggest that modulation of the gut microbiota might be one promising therapy for MS. Here, we investigated whether the probiotic *Escherichia coli* strain Nissle 1917 (ECN) could modulate the outcome of experimental autoimmune encephalomyelitis (EAE), a murine model of MS. We evidenced that daily oral treatment with ECN, but not with the archetypal K12 *E. coli* strain MG1655, reduced the severity of EAE induced by immunization with the MOG_{35–55} peptide. This beneficial effect was associated with a decreased secretion of inflammatory cytokines and an increased production of the anti-inflammatory cytokine IL-10 by autoreactive CD4 T cells, both in peripheral lymph nodes and CNS. Interestingly, ECN-treated mice exhibited increased numbers of MOG-specific CD4⁺ T cells in the periphery contrasting with severely reduced numbers in the CNS, suggesting that ECN might affect T cell migration from the periphery to the CNS through a modulation of their activation and/or differentiation. In addition, we demonstrated that EAE is associated with a profound defect in the intestinal barrier function and that treatment with ECN, but not with MG1655, repaired intestinal permeability dysfunction. Collectively, our data reveal that EAE induces a disruption of the intestinal homeostasis and that ECN protects from disease and restores the intestinal barrier function.

Keywords: *Escherichia coli* Nissle 1917, experimental autoimmune encephalomyelitis, probiotic, intestinal permeability, encephalitogenic T-cell, central nervous system

Abbreviations: CFA, complete Freund's adjuvant; CNS, central nervous system; EAE, experimental autoimmune encephalomyelitis; ECN, *Escherichia coli* Nissle 1917; FD4, fluorescein isothiocyanate-dextran 4 kDa; MS, multiple sclerosis; NLR, NOD-like receptor; Treg, regulatory T cell; TLR, toll-like receptor.

INTRODUCTION

Multiple sclerosis (MS) is a chronic demyelinating inflammatory disease of the central nervous system (CNS) that predominantly affects young adults (1–3). The precise etiology of MS is still debated, but it is largely accepted that disease onset and progression result from a complex interplay between genetic and environmental factors (4–8). The role of the immune system in disease pathogenesis is indisputable, and a number of innate and adaptive immune cells are key for the development and progression of MS (9). MS is characterized by inflammation, demyelination, and neurodegeneration driven by autoreactive T cells possibly directed against myelin self-antigens (10, 11). CD4⁺ T cells that produce high levels of IFN- γ , IL-17, and GM-CSF are considered as important players in the immunopathogenesis of MS and its animal model, experimental autoimmune encephalomyelitis (EAE) (10, 12–14). In addition, MS patients exhibit defects in regulatory T cells (Tregs), known to suppress the activity of effector T cells (15).

In recent years, the incidence of autoimmune diseases in populations from developed countries has dramatically risen. One hypothesis is a modification of the gut microbiota, resulting from changes in diet combined with widespread introduction of antibiotics. Dysbiotic gut microbiota has been implicated in a wide range of immune-mediated diseases, including inflammatory bowel disease, MS, type 1 diabetes, and rheumatoid arthritis (16–19). In support of a role of a dysbiotic gut microbiota, the severity of EAE was reduced upon oral administration of antibiotics (20, 21). In a spontaneous relapsing–remitting mouse model of EAE, germ-free transgenic SJL/J mice were protected against disease, while the colonization of the gut by commensal microbiota restored susceptibility (22). Likewise, the mono-colonization of the gut of C57BL/6 mice with segmented-filamentous bacteria promoted Th17 accumulation in the spinal cord and restored EAE development (23). Together, these data suggest a role of indigenous gut microbiota in the pathogenesis of autoimmune diseases, thereby raising the possibility that modulation of gut microbiota could be used as a novel therapeutic approach. In this context, probiotics have been considered as potent modulators for the treatment of autoimmune diseases, due to the fact that they are generally recognized to confer beneficial health effects (24, 25). *Escherichia coli* strain Nissle 1917 (Mutaflor®, ECN) is a Gram-negative microorganism with probiotic properties that has been successfully used for the treatment of intestinal inflammation, especially in patients suffering from ulcerative colitis (26). In this study, we explored the therapeutic potential of ECN in CNS inflammatory disease, using the EAE model in mice. We show that ECN administration has beneficial effects on EAE and this beneficial effect is associated with changes in T cell compartmentalization, cytokines production by autoreactive CD4 T cells and intestinal permeability.

ANIMALS AND METHODS

Animals

C57/BL6J male mice were obtained from Janvier Labs (Le Genest Saint-Isle, France) and housed under specific pathogen-free

conditions with *ad libitum* access to food and water. All mice were housed under specific pathogen-free conditions at the INSERM animal facility (Zootechnie US-006), which is accredited by the French Ministry of Agriculture (accreditation number A-31 55508) to perform experiments on live mice. All experimental protocols were approved by the local ethics committee and are in compliance with the French and European regulations on care and protection of the Laboratory Animals (EC Directive 2010/63).

Antibodies for Flow Cytometry and ELISA

The mAbs used for flow cytometry were as follows: RM4-5 (anti-mouse CD4), IM7 (anti-mouse CD44), H57-597 (anti-mouse TCR $\alpha\beta$), and FJK-165 (anti-mouse Foxp3). The fluorescent conjugated antibodies were purchased from e-Biosciences, BD Biosciences, and Biolegend. Antibodies used for ELISA were as follows: AN18 (anti-IFN- γ), purified anti-mouse IL-17A (BD Biosciences), purified anti-mouse GM-CSF (BD Biosciences), XMG1.2 (anti-IFN- γ biotin), biotin anti-mouse IL-17A (BD Biosciences), and biotin anti-mouse GM-CSF (BD Biosciences).

Bacterial Preparation and Growth Conditions

The strains used in this study are the probiotic *E. coli* Nissle 1917 (ECN) and the archetypal K12 *E. coli* strain MG1655. Both strains were engineered to exhibit a mutation in the *rpsL* gene, which is known to confer resistance to streptomycin (27). Before oral administrations, ECN and MG1655 strains were grown for 6 h in LB broth supplemented with streptomycin (50 $\mu\text{g}/\text{ml}$) at 37°C with shaking. This culture was diluted 1:100 in LB broth without antibiotics and cultured overnight at 37°C with shaking. Bacterial pellets from this overnight culture were resuspended in sterile PBS to the concentration of 10⁹ cfu/ml. Bacteria were amplified from –80°C frozen stocks to ensure genetic stability.

Induction of EAE and Clinical Investigation

The MOG_{35–55} (MEVGWYRSPFSRVVHLYRNGK) peptide was purchased from Polypeptide Laboratories (San Diego, CA, USA). 8- to 12-week-old mice were immunized subcutaneously with 50 μg of MOG_{35–55} peptide emulsified in complete Freund's adjuvant (BD Difco, Franklin Lakes, NJ, USA) containing 500 μg of *Mycobacterium tuberculosis* (Strain H37, Difco). Mice were injected intravenously with 200 ng of pertussis toxin (List Biological Laboratories, Campbell, CA, USA) at days 0 and 2 post-immunization. Mice were daily treated with ECN, MG1655, or PBS starting 7 days before immunization (Figure S1 in Supplementary Material). Bacteria were administered every day by gavage at the dose of 10⁸ cfu/animal, prepared in 100 μl of PBS. Bacteria were freshly prepared every day as already described. Clinical scores were recorded daily as follow: 0, no signs of disease; 1, loss of tone in the tail; 2, hind limb paresis; 3, hind limb paralysis; 4, tetraplegia; and 5, moribund (28).

Bacterial Load

Feces homogenates were prepared in 600 μ l of isotonic saline solution using Precellys tissue homogenizer (Bertin Technologies). Ten-fold serial dilutions of homogenates were plated on MacConkey agar plates (Biovalley) supplemented or not with streptomycin. Plates were incubated at 37°C and 5% CO₂ and cfu numbers were enumerated after 24 h. Colonies found growing on MacConkey's agar plates without antibiotic were considered to be *enterobacteria*-like bacteria belonging to the family *Enterobacteriaceae*.

Intestinal Permeability

In vivo intestinal permeability assessment was performed using FITC-dextran. Briefly, food and water were withdrawn for 3 h, and mice were gavaged with FITC-dextran (625 mg/kg body weight of FITC-dextran, MW: 4 kDa, FD4, Sigma-Aldrich). Serum was collected after retro-orbital puncture and fluorescence intensity was measured at 485/525 nm using an automatic Infinite M200 microplate reader (Tecan). FD4 concentrations were determined from standard curves generated by serial dilution of FD4. FD4 recovery upon time was calculated by linear regression of sample fluorescence, taking account of mice body weight (29).

Ex vivo intestinal permeability was performed in Ussing chamber. Biopsies from ileum or colon were placed in a chamber exposing 0.196 cm² of tissue surface to 1.5 ml of circulating oxygenated Ringer solution at 37°C (30). Ileum and colon paracellular permeability were assessed by measuring the mucosal-to-serosal flux of 4 kDa FITC-dextran (Sigma-Aldrich) for 1 h (29). Results are expressed as flux of FITC-dextran per square centimeters of mucosa per hour.

Real-time PCR

Total mRNA was extracted from ileum and colon mucosa scrapping by Trizol-Chloroform precipitation. mRNA was subsequently purified using Rneasy Plus kit (Qiagen) following the manufacturer's instructions. For reverse transcription PCR, the iScript cDNA synthesis kit (Bio-Rad) was used. Real-time PCR was carried out using iQSYBR Green Supermix (Bio-Rad) for Reg3 γ , Reg3 β , ZO-1, Claudin-8, and IL-6. Primers are presented in Supplementary Table S1. Mouse glyceraldehyde 3-phosphate dehydrogenase served as endogenous control. PCR was done in duplicate and threshold cycle (Ct) values of the target genes were normalized to the endogenous control. Differential expression was calculated using the 2^{- $\Delta\Delta$ Ct} methods and expressed as fold induction as compared to the expression in non-immunized animals (31).

Isolation and Functional Characterization of Mononuclear Cells in CNS and Lymphoid Organs

Mice were anesthetized with ketamine and perfused with cold PBS. Brain and spinal cord were collected separately, homogenized and digested with collagenase D (2.5 mg/ml, Roche Diagnostics), Dnase I (10 μ g/ml), and TLCK (1 μ g/ml, Roche, Basel, Switzerland) for 30 min at 37°C. Cells were then washed, suspended in 37% Percoll, and layered on 70% Percoll. After a

20-min centrifugation at 2,000 rpm, the mononuclear cells were collected from the interface washed and resuspended in culture medium. For tetramer staining, cells from brain, spinal cord, and LNs were incubated for 2 h at room temperature with I-Ab MOG₃₈₋₄₉ Tetramer-PE (NIH tetramer core facility) and then stained for surface markers before flow cytometry analysis. For functional analysis, 3 \times 10⁶ total lymph node cells were stimulated with different concentrations of MOG₃₅₋₅₅ for 72 h. Cytokines were then quantified in the supernatants.

Cytokine Measurement

Enzyme immunoassays were used to measure cytokines in culture supernatants. 96-well plates were coated for 2 h at 37°C with anti-IFN- γ , anti-IL-17, or anti-GM-CSF in carbonate buffer 0.05 M pH 9.6. Culture supernatants or standards were incubated 2 h at 37°C. The plates were then incubated for 2 h with a secondary biotinylated antibody specific for each cytokine, followed by 20 min incubation with streptavidin-phosphatase alkaline at 37°C. Finally, plates were revealed by phosphatase alkaline substrate, and absorbance was measured at 450/540 nm. IL-10 and TNF were tested using CBA technology.

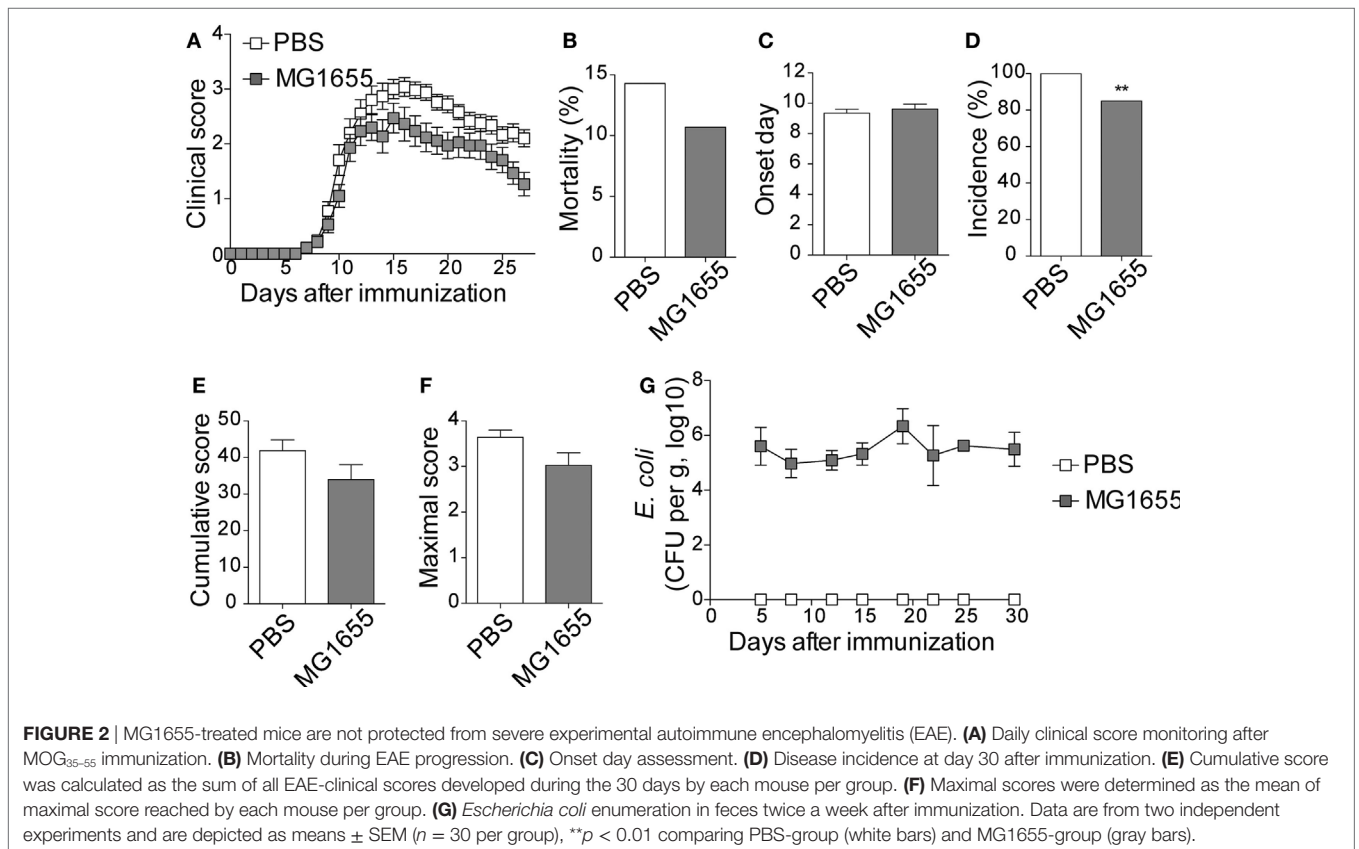
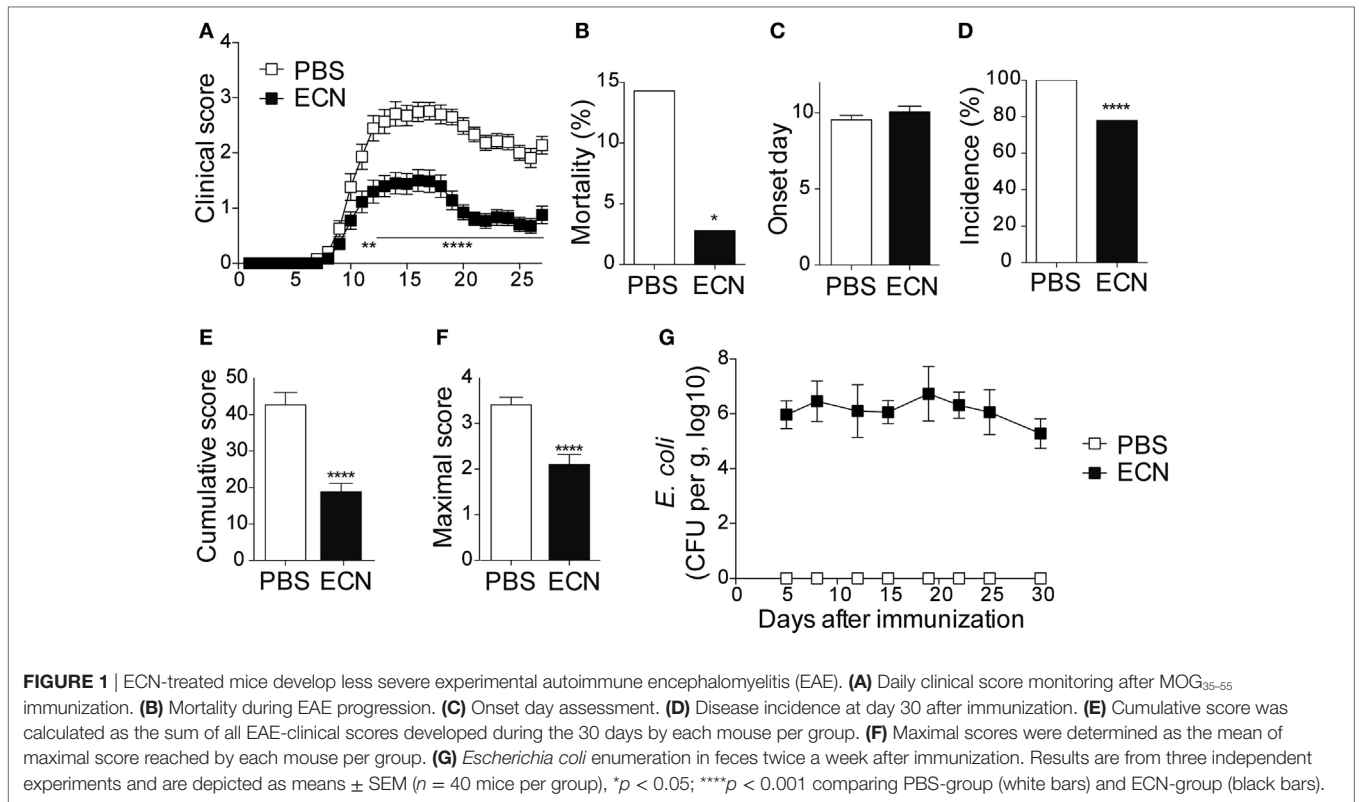
Statistical Analyses

Statistical evaluation of differences between the experimental groups was determined by using two-way analysis of variance followed by a Bonferroni posttest for clinical monitoring and intestinal permeability assay; or with Mann-Whitney *U* test for the other assays. All tests were performed with GraphPad Prism 5.04 (GraphPad Software Inc., San Diego, CA, USA). All data are presented as mean \pm SEM. A *p* value \leq 0.05 was considered significant.

RESULTS

ECN-Treated Mice Develop Less Severe EAE

To study the impact of ECN treatment on the development of CNS inflammation, we compared the susceptibility of PBS- and ECN-treated mice to EAE according to the protocol shown in Figure S1 in Supplementary Material. When immunized by MOG₃₅₋₅₅ peptide, PBS-treated animals developed a classical disease characterized by a progressive ascendant paralysis. Notably, when daily treated with ECN, mice developed a less severe disease, as illustrated by reduced clinical score (Figure 1A) and mortality (Figure 1B). The day of onset was similar between both groups (Figure 1C), while the incidence (Figure 1D) and the severity of disease progression were drastically reduced (Figures 1E,F) upon ECN treatment. Interestingly, mice treated with *E. coli* strain MG1655 developed similar disease progression, incidence and severity as PBS-treated animals (Figures 2A-F), suggesting that the protective effect observed with ECN is due to its intrinsic properties. The absence of probiotic effect with MG1655 is unlikely related to defective gut colonization, since *E. coli* intestinal loads were equivalent regardless of the type of strain (Figures 1G and 2G).



Encephalitogenic MOG-Specific CD4⁺ T Cells Are Trapped in the Periphery in ECN-Treated Animals

Peripheral activation and subsequent migration of autoreactive CD4⁺ T cells into the CNS are critical steps in the pathogenesis of EAE and MS (32, 33). 14 days after EAE induction, leukocytes were isolated from the spinal cord or peripheral lymphoid organs and were analyzed. Interestingly, the total numbers of CD4⁺ and MOG-specific CD4⁺ T cells were significantly decreased in the spinal cord (**Figure 3A**) of ECN-treated animals. In contrast, the numbers of these cells increased in inguinal (draining) (**Figure 3B**), mesenteric (**Figure 3C**), and cervical (**Figure 3D**) lymph nodes in ECN-treated animals. We further checked whether oral treatment with ECN could modulate the effector function of MOG-specific CD4⁺ T cells. Draining lymph node T cells collected on day 14 (**Figure 4**) or day 30 (Figure S2 in Supplementary Material) after immunization were stimulated with MOG₃₅₋₅₅ for 72 h and analyzed for the production of various cytokines. Treatment with ECN significantly reduced the production of IFN- γ , GM-CSF, IL-17, and TNF- α (**Figures 4A–D**; Figure S2 in Supplementary Material). This effect was not observed when T cells originated from MG1655-treated mice (Figure S2 in Supplementary Material). Intriguingly, treatment with ECN significantly increased the production of IL-10 by MOG-specific CD4⁺ T cells (**Figure 4E**), which is a hallmark of Tregs (34, 35). Moreover, draining lymph nodes from ECN-treated mice exhibited a significantly higher number of CD4⁺Foxp3⁺ cells (**Figure 4F**). Taken together, these data demonstrate that ECN

protection of the host from CNS inflammation is associated to dampened inflammatory cytokine production and reduced migration of MOG-specific T cells from the periphery to the CNS.

EAE-Mediated Perturbation of the Intestinal Barrier Function Is Prevented by ECN Treatment

It has been recently reported that intestinal permeability is increased during the course of EAE (36). In agreement with these studies, mice exhibited a robust and time-dependent enhanced intestinal permeability when immunized with MOG₃₅₋₅₅, as assessed *in vivo* by the luminal to blood passage of fluorescent marker [FITC-dextran 4 kDa (FD4)]. This was observed before the clinical onset, i.e., 7 days after immunization and at the peak of the disease, 14 days after immunization (**Figure 5A**). Interestingly, we observed a significant correlation between colon and ileum permeability and EAE-clinical score 14 days after immunization (**Figures 5B,C**), suggesting that intestinal barrier dysfunction is an important parameter accounting for the severity of autoimmune inflammation.

The effectiveness of ECN as a probiotic organism has been correlated to its ability to strengthen the intestinal barrier function (37). To investigate the impact of ECN treatment on intestinal barrier function during EAE progression, we measured the intestinal permeability of mice treated daily with ECN, 7 and 14 days after MOG₃₅₋₅₅ immunization. The oral treatment with ECN significantly reduced the FD4 passage from the intestinal lumen to the blood compartment, demonstrating that ECN

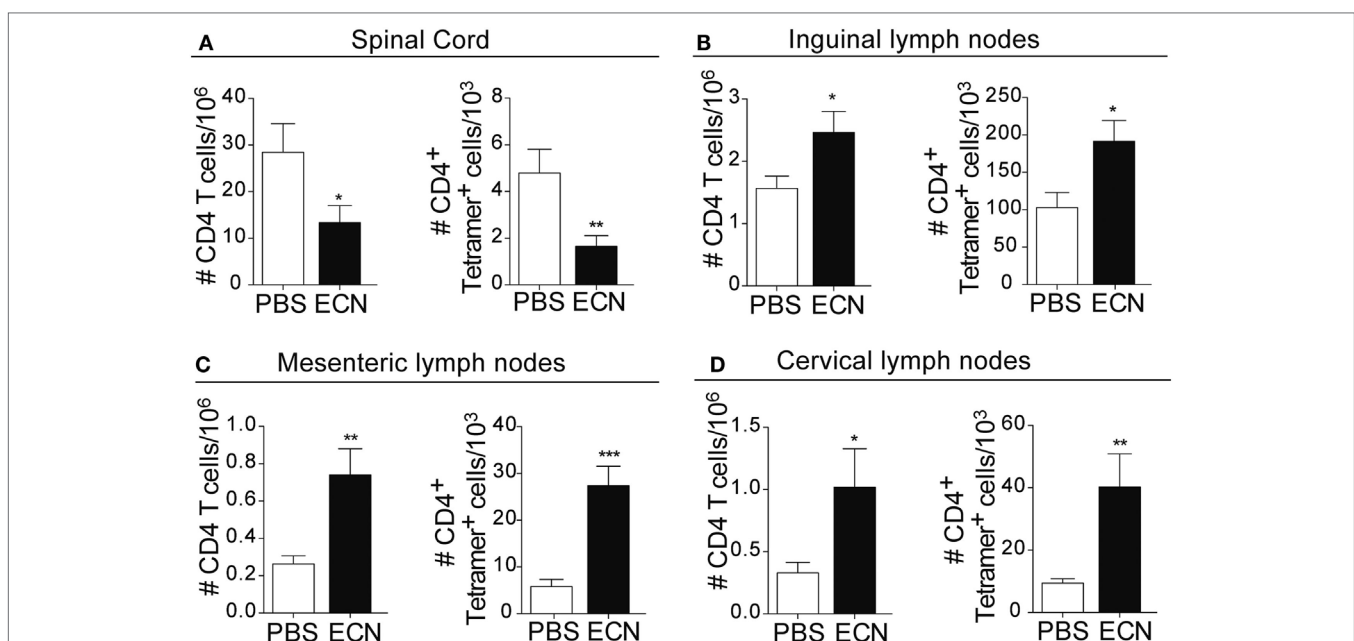
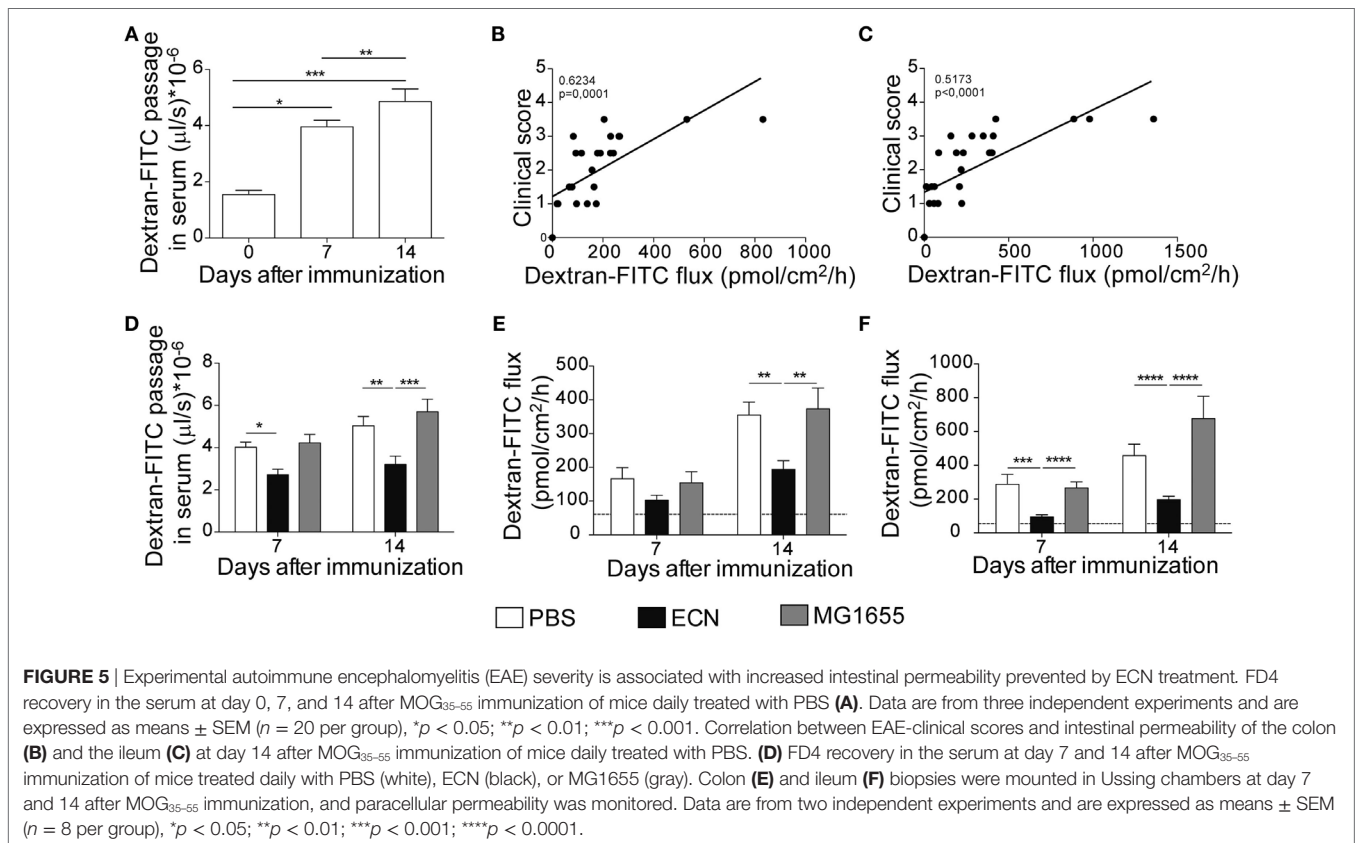
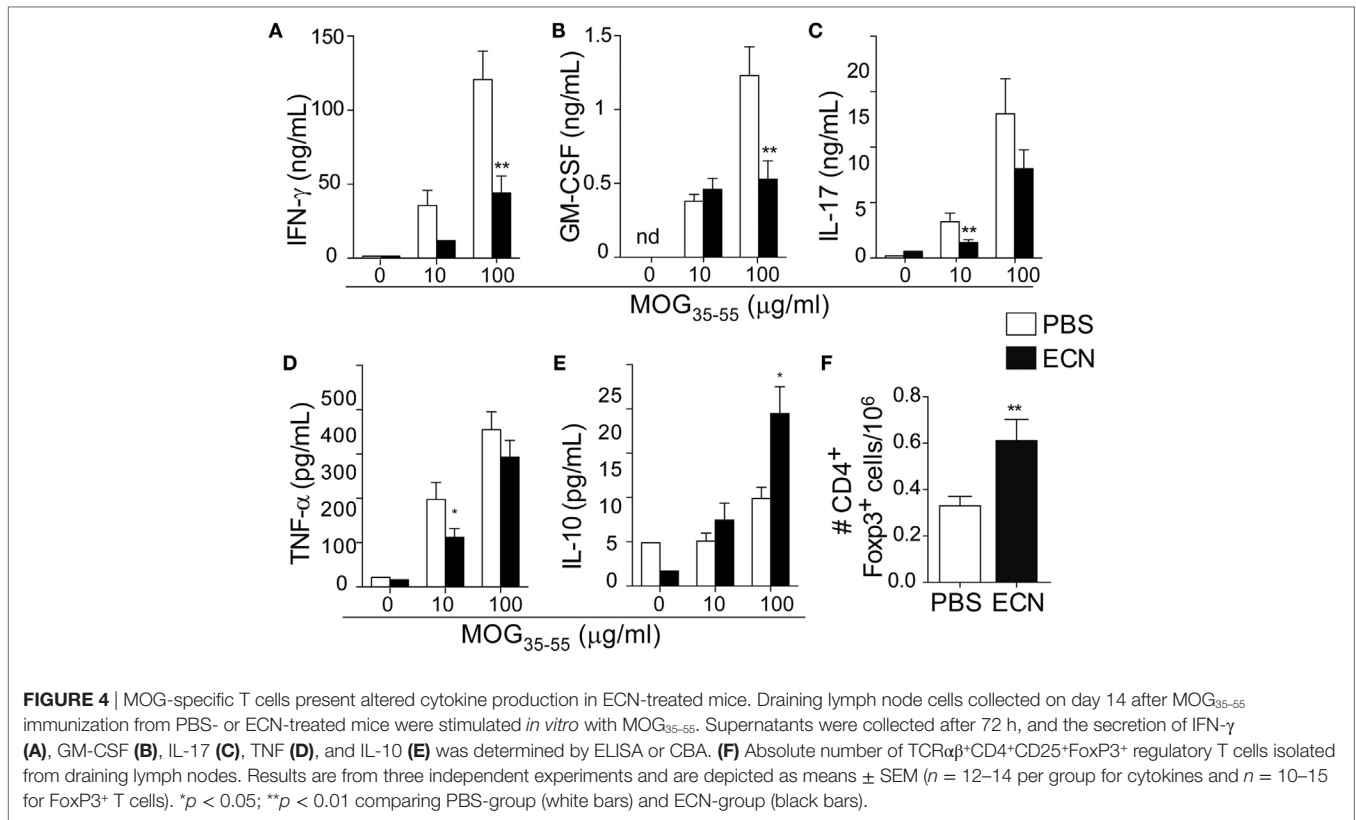


FIGURE 3 | ECN-treated mice exhibit reduced migration of CD4⁺ T cell from the periphery to the central nervous system during the acute phase of experimental autoimmune encephalomyelitis. Absolute number of TCR $\alpha\beta$ ⁺CD4⁺ and TCR $\alpha\beta$ ⁺CD4⁺ MOG-specific Tetramer⁺ T cells isolated from the spinal cord (**A**), draining lymph nodes (**B**), mesenteric lymph nodes (**C**), and cervical lymph nodes (**D**) 14 days after MOG₃₅₋₅₅ immunization. Data are from three independent experiments and are depicted as means \pm SEM ($n = 20$ per group for total CD4⁺ T cells and $n = 5$ per group for Tetramer⁺ T cells), * $p < 0.05$; ** $p < 0.01$; *** $p < 0.001$ comparing PBS-groups (white bars) and ECN-groups (black bars).



is able to preserve the intestinal barrier function during EAE (Figure 5D). In contrast, mice treated with MG1655 developed similar intestinal barrier function impairment as PBS-treated animals (Figure 5D). To gain further insight into EAE-induced intestinal barrier dysfunction, colon and ileum biopsies were mounted in Ussing chambers and analyzed for the paracellular flux of FD4. Seven and fourteen days after immunization, PBS-treated mice exhibited an increase of both colon and ileum permeability (Figures 5E,F). Such an increase in colon and ileum intestinal permeability was not modulated by MG1655 treatment, while they were significantly reduced by oral treatment with ECN (Figures 5E,F). To investigate the underlying mechanisms, we first analyzed several components of the intestinal barrier function. Fourteen days after MOG₃₅₋₅₅ immunization, we observed a downregulation of mRNA coding for the antimicrobial peptides Reg3 γ (Figure 6A) and Reg3 β (Figure 6B), as well as for the tight-junction proteins Claudin-8 (Figure 6C) and ZO-1 (Figure 6D), whereas expression of the prototypal pro-inflammatory cytokine IL-6 was increased (Figure 6E). These alterations of the intestinal barrier function were reduced upon ECN treatment as compared to PBS or MG1655-treated animals (Figure 6; Figure S3 in Supplementary Material).

DISCUSSION

Intestinal immune homeostasis has recently emerged as a critical cofactor in autoimmune processes (38). The intimate equilibrium between intestinal microflora and gut barrier function is often modified during chronic inflammatory and autoimmune diseases, resulting in efforts to restore the microbial composition

by using probiotics. In this study, we investigated the efficacy and the mechanism supporting the effect of *E. coli* Nissle 1917 on neuroinflammation, using the EAE model. We have shown here that a prophylactic daily treatment with ECN drastically reduced the development, progression, and severity of CNS inflammation and this beneficial effect is associated with changes in T cell compartmentalization, cytokines production, and intestinal permeability.

Probiotics are defined as live bacteria that can give a health benefit to the host when administered in adequate amounts (39). Multiple mechanisms have been described to support their beneficial effects, including inhibition of the adhesion and invasion of epithelial cells by pathogens, modulation of intestinal inflammatory responses and improvement of the intestinal barrier (40). ECN is one of the most investigated probiotic bacteria (41). Numerous studies have demonstrated its beneficial effects in the management of intestinal inflammatory disorders, especially ulcerative colitis (41). Despite a rich literature, the exact mechanism underlying ECN efficiency is poorly understood, and pre-clinical studies addressing its efficacy in CNS disease are lacking. Here, we show for the first time that ECN treatment has beneficial effects on CNS inflammation by reducing disease severity and mortality. In contrast, mice treated with the archetypal K12 *E. coli* strain MG1655 were as sensitive to EAE as untreated mice suggesting that the genetic background of the strain is of particular importance and determines its ability to act as a probiotic.

One of the best-characterized feature that is likely to contribute to the effectiveness of ECN as a probiotic organism is its ability to strengthen the gut barrier function (42). While several autoimmune pathologies have been associated with perturbation of intestinal barrier function (38), the correlation between a “leaky

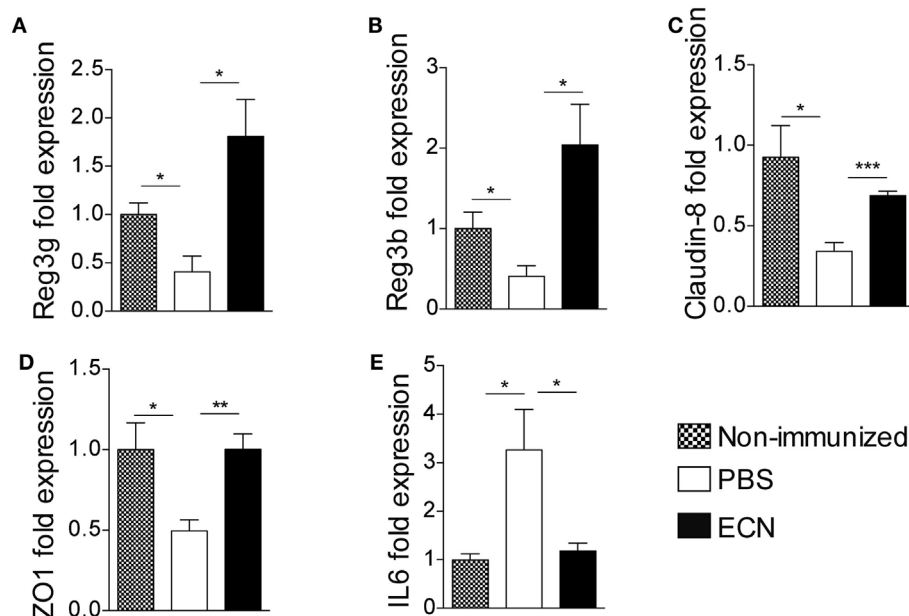


FIGURE 6 | ECN treatment protects from experimental autoimmune encephalomyelitis-mediated alteration of the intestinal barrier function. Real-time PCR analysis of Reg3 γ (A), Reg3 β (B), Claudin-8 (C), ZO-1 (D), and IL-6 (E) in the ileum mucosa 14 after MOG₃₅₋₅₅ immunization of mice daily treated with PBS, ECN or left unimmunized. Data are from two independent experiments and are expressed as means \pm SEM ($n = 8$ per group), * $p < 0.05$; ** $p < 0.01$; *** $p < 0.001$; comparing PBS-groups (white bars), ECN-groups (black bars), and unimmunized group (dashed bars).

gut” syndrome and the development of MS is yet unknown. It has been suggested that patients with relapsing–remitting (RRMS) or secondary–progressive MS exhibit increased intestinal permeability (38, 43), whereas RRMS patients under remission show a restored intestinal permeability almost comparable to controls (38). Recently, Nouri et al. revealed that intestinal permeability was altered during EAE (36). In agreement with this study, we observed that EAE provoked increased paracellular permeability at ileal and colonic locations. Of note, recent reports showed that patients suffering from IBD, another “leaky gut”-related immune-mediated syndrome, for which ECN treatment is protective, were at higher risk for the development of MS (44). We also provided evidence that the increase of both small and large intestine permeability was associated with altered mRNA expression of intestinal proteins that are critical for the strengthening of the physical and biochemical intestinal barriers and for the homeostasis of the gut microbiota, including tight-junction proteins (ZO-1 and Claudin-8) and antimicrobial peptides (Reg3 β and Reg3 γ) (45, 46). In addition, the expression of IL-6 was significantly increased in the gut mucosa upon EAE immunization. This pro-inflammatory cytokine is markedly increased in various intestinal inflammatory diseases and has been associated with increased tight-junction permeability (47). Of note, we demonstrated that the sealing action of ECN improves intestinal barrier function through the upregulation of tight-junction proteins and antimicrobial peptides. Interestingly, we observed a correlation between the perturbation of the intestinal barrier function and the severity of the neurological syndromes, further supporting the fact that ECN-dependent improvement of intestinal permeability may modulate or perpetuate CNS autoimmunity.

The alterations of the intestinal barrier have a major consequence: the increased transmucosal passage of putative noxious or immunogenic antigens. The intestinal mucosa is a unique environment for dialog between microbiota-derived antigens and the mucosal immune system. This cross talk is now known to affect immunological homeostasis and tolerance within the gut (48), but also in systemic compartment by modulating T cell priming and activation (49). Indeed, recent studies have demonstrated that RRMS patients exhibited alterations in their gut microbiota composition (19, 50) and that these dysbiotic microbial populations profoundly altered gene expression of monocytes and T cells, which are involved both in the initiation phase of immunity and in the activation of the adaptive immune response (19). In this study, we showed that ECN treatment during EAE affects T cell homeostasis. In contrast to the CNS, there was an increase in the total number of MOG-specific CD4⁺ T cells in the inguinal, cervical and to larger extent mesenteric lymph nodes of mice treated with ECN. These CD4⁺ T cells presented an altered function as evidenced by their decreased production of IFN- γ , IL-17, GM-CSF, and TNF α , while the secretion of IL-10 was increased and this was associated with an enriched population of CD4⁺CD25⁺FoxP3⁺ Tregs. Thus, our results suggest that the mechanism underlying the resistance to EAE of ECN-treated animals could result from a defective differentiation of autoreactive CD4⁺ T cell in the periphery, which is known to account for their egress from the periphery to the CNS (51, 52). Our study is also consistent with previous ones showing that colonization by ECN lead to a modification of the cytokine

repertoire, with an increased production of IL-10 by monocytes or activated lymphocytes (53, 54). This anti-inflammatory feature is shared by other probiotic strains that often lead to increased IL-10 production (55, 56). The upregulation of IL-10 production in ECN-treated mice may be one of the mechanisms preventing inflammation and autoimmunity. In this regard, EAE recovery is associated with increased production of IL-10, which is known to suppress EAE (57, 58).

The molecular rationale behind the immunomodulatory effect of ECN in EAE has not yet been demonstrated and is under further investigation by our team. The beneficial effect of ECN in CNS inflammation could be explained by the improvement of the intestinal barrier function and the resulting prevention of a continuous stimulation of the host innate immune system by the gut components. In this regard, it has been shown that microbiota-associated molecular patterns can activate the host innate immune system *via* pattern-recognition receptors, such as toll-like receptors (TLRs) and nucleotide-binding domain and leucine-rich repeat containing receptors [NOD-like receptors (NLRs)] present in intestinal epithelial and myeloid cells (59). Thus, the activation of TLRs and NLRs could be implicated in the mechanisms by which gut microbiota trigger autoimmune diseases. It is also possible that ECN may reduce microbial imbalance in the EAE gut through inter or intraspecies competition, for which ECN genome encodes specialized molecules (60).

In conclusion, our findings show that alteration of the intestinal barrier function is associated with EAE progression and severity. Our results also suggest that the improvement of the intestinal permeability by probiotic treatment may be a useful way to control neuroinflammation and CNS pathogenesis. These results pave the way to consider ECN as valuable and innovative prophylactic or diet supplements to modulate or reverse the initiation and progression of CNS inflammatory diseases or other immunological disorders associated with alterations in the epithelial barrier of the gut, the so-called leaky gut.

ETHICS STATEMENT

This study was carried out in accordance with the recommendations of the French and European regulations on care and protection of the Laboratory Animals (EC Directive 2010/63). The protocol was approved by the local ethics committee.

AUTHOR CONTRIBUTIONS

TS and AS conceived of the project; SK, TS, FB, EO, and AS designed and performed the research and analyzed and interpreted the data; MBenamar, IB, and MBoury facilitated the research; TS, SK, EO, and AS prepared the figures and wrote the manuscript.

ACKNOWLEDGMENTS

The authors sincerely thank Daniel Dunia, Roland Liblau, and Anne S. Dejean for their helpful discussions and suggestions. Pr. Ulrich Dobrindt (Münster University, Germany) for providing *E. coli* strains, the members of the animal facility Genotoul

Anexplo Platform (Toulouse, France). We thank FE L'Faqihi-Olive, V. Duplan-Eche and AL Iscache for technical assistance at the flow cytometry facility of CPTP, Toulouse, France. This work was supported by research grant ANR-13-BSV1-0028 from the Agence Nationale de la Recherche and the platform Aninfimip, an EquipEx ("Equipement d'Excellence") supported by the French government through the Investments for the Future program (ANR-11-EQPX-0003) and by research grant ANR-GUI-AAP-06

from the Agence Nationale de la Recherche. AS is supported by Centre National de la Recherche Scientifique.

SUPPLEMENTARY MATERIAL

The Supplementary Material for this article can be found online at <http://journal.frontiersin.org/article/10.3389/fimmu.2017.01096/full#supplementary-material>.

REFERENCES

- Noseworthy JH, Lucchinetti C, Rodriguez M, Weinshenker BG. Multiple sclerosis. *N Engl J Med* (2000) 343(13):938–52. doi:10.1056/NEJM200009283431307
- Compston A, Coles A. Multiple sclerosis. *Lancet* (2008) 372(9648):1502–17. doi:10.1016/S0140-6736(08)61620-7
- Okada H, Kuhn C, Feillet H, Bach JF. The 'hygiene hypothesis' for autoimmune and allergic diseases: an update. *Clin Exp Immunol* (2010) 160(1):1–9. doi:10.1111/j.1365-2249.2010.04139.x
- Hernan MA, Jick SS, Logrosino G, Olek MJ, Ascherio A, Jick H. Cigarette smoking and the progression of multiple sclerosis. *Brain* (2005) 128(Pt 6):1461–5. doi:10.1093/brain/awh471
- Correale J, Fiol M, Gilmore W. The risk of relapses in multiple sclerosis during systemic infections. *Neurology* (2006) 67(4):652–9. doi:10.1212/01.wnl.0000233834.09743.3b
- Correale J, Farez M. Association between parasite infection and immune responses in multiple sclerosis. *Ann Neurol* (2007) 61(2):97–108. doi:10.1002/ana.21067
- Oksenberg JR, Baranzini SE, Sawcer S, Hauser SL. The genetics of multiple sclerosis: SNPs to pathways to pathogenesis. *Nat Rev Genet* (2008) 9(7):516–26. doi:10.1038/nrg2395
- Ascherio A, Munger KL, White R, Kochert K, Simon KC, Polman CH, et al. Vitamin D as an early predictor of multiple sclerosis activity and progression. *JAMA Neurol* (2014) 71(3):306–14. doi:10.1001/jamaneurol.2013.5993
- Goverman J. Autoimmune T cell responses in the central nervous system. *Nat Rev Immunol* (2009) 9(6):393–407. doi:10.1038/nri2550
- Sospedra M, Martin R. Immunology of multiple sclerosis. *Annu Rev Immunol* (2005) 23:683–747. doi:10.1146/annurev.immunol.23.021704.115707
- Cao Y, Goods BA, Raddassi K, Nepom GT, Kwok WW, Love JC, et al. Functional inflammatory profiles distinguish myelin-reactive T cells from patients with multiple sclerosis. *Sci Transl Med* (2015) 7(287):287ra274. doi:10.1126/scitranslmed.aaa8038
- Miossec P. IL-17 and Th17 cells in human inflammatory diseases. *Microbes Infect* (2009) 11(5):625–30. doi:10.1016/j.micinf.2009.04.003
- Steinman L. Immunology of relapse and remission in multiple sclerosis. *Annu Rev Immunol* (2014) 32:257–81. doi:10.1146/annurev-immunol-032713-120227
- Stienne C, Michieletto MF, Benamar M, Carrie N, Bernard I, Nguyen XH, et al. Foxo3 transcription factor drives pathogenic T helper 1 differentiation by inducing the expression of eomes. *Immunity* (2016) 45(4):774–87. doi:10.1016/j.immuni.2016.09.010
- Viglietta V, Baecher-Allan C, Weiner HL, Hafler DA. Loss of functional suppression by CD4+CD25+ regulatory T cells in patients with multiple sclerosis. *J Exp Med* (2004) 199(7):971–9. doi:10.1084/jem.20031579
- Kostic AD, Xavier RJ, Gevers D. The microbiome in inflammatory bowel disease: current status and the future ahead. *Gastroenterology* (2014) 146(6):1489–99. doi:10.1053/j.gastro.2014.02.009
- Alkanani AK, Hara N, Gottlieb PA, Ir D, Robertson CE, Wagner BD, et al. Alterations in intestinal microbiota correlate with susceptibility to type 1 diabetes. *Diabetes* (2015) 64(10):3510–20. doi:10.2337/db14-1847
- Yurkovetskiy LA, Pickard JM, Chervonsky AV. Microbiota and autoimmunity: exploring new avenues. *Cell Host Microbe* (2015) 17(5):548–52. doi:10.1016/j.chom.2015.04.010
- Jangi S, Gandhi R, Cox LM, Li N, von Glehn F, Yan R, et al. Alterations of the human gut microbiome in multiple sclerosis. *Nat Commun* (2016) 7:12015. doi:10.1038/ncomms12015
- Ochoa-Reparaz J, Mielcarz DW, Ditrio LE, Burroughs AR, Foureau DM, Haque-Begum S, et al. Role of gut commensal microflora in the development of experimental autoimmune encephalomyelitis. *J Immunol* (2009) 183(10):6041–50. doi:10.4049/jimmunol.0900747
- Ochoa-Reparaz J, Mielcarz DW, Haque-Begum S, Kasper LH. Induction of a regulatory B cell population in experimental allergic encephalomyelitis by alteration of the gut commensal microflora. *Gut Microbes* (2010) 1(2):103–8. doi:10.4161/gmic.1.2.11515
- Berer K, Mues M, Koutrolos M, Rasbi ZA, Boziki M, Johnner C, et al. Commensal microbiota and myelin autoantigen cooperate to trigger autoimmune demyelination. *Nature* (2011) 479(7374):538–41. doi:10.1038/nature10554
- Lee YK, Menezes JS, Umesaki Y, Mazmanian SK. Proinflammatory T-cell responses to gut microbiota promote experimental autoimmune encephalomyelitis. *Proc Natl Acad Sci U S A* (2011) 108(Suppl 1):4615–22. doi:10.1073/pnas.1000082107
- Isolauri E. Probiotics in human disease. *Am J Clin Nutr* (2001) 73(6):1142S–6S.
- Isolauri E, Sutas Y, Kankaanpaa P, Arvilommi H, Salminen S. Probiotics: effects on immunity. *Am J Clin Nutr* (2001) 73(2 Suppl):444S–50S.
- Kruis W, Frick P, Pokrotnieks J, Lukas M, Fixa B, Kascak M, et al. Maintaining remission of ulcerative colitis with the probiotic *Escherichia coli* Nissle 1917 is as effective as with standard mesalazine. *Gut* (2004) 53(11):1617–23. doi:10.1136/gut.2003.037747
- Olier M, Marcq J, Salvador-Cartier C, Secher T, Dobrindt U, Boury M, et al. Genotoxicity of *Escherichia coli* Nissle 1917 strain cannot be dissociated from its probiotic activity. *Gut Microbes* (2012) 3(6):501–9. doi:10.4161/gmic.21737
- Kassem S, Gaud G, Bernard I, Benamar M, Dejean AS, Liblau R, et al. A natural variant of the T cell receptor-signaling molecule Vav1 reduces both effector T cell functions and susceptibility to neuroinflammation. *PLoS Genet* (2016) 12(7):e1006185. doi:10.1371/journal.pgen.1006185
- Jung C, Meinzer U, Montcuquet N, Thachil E, Chateau D, Thiebaut R, et al. *Yersinia pseudotuberculosis* disrupts intestinal barrier integrity through hematopoietic TLR-2 signaling. *J Clin Invest* (2012) 122(6):2239–51. doi:10.1172/JCI58147
- Alnabhani Z, Montcuquet N, Biaggini K, Dussaillant M, Roy M, Ogier-Denis E, et al. *Pseudomonas fluorescens* alters the intestinal barrier function by modulating IL-1beta expression through hematopoietic NOD2 signaling. *Inflamm Bowel Dis* (2015) 21(3):543–55. doi:10.1097/MIB.0000000000000291
- Alnabhani Z, Hugot JP, Montcuquet N, Le Roux K, Dussaillant M, Roy M, et al. Respective roles of hematopoietic and nonhematopoietic Nod2 on the gut microbiota and mucosal homeostasis. *Inflamm Bowel Dis* (2016) 22(4):763–73. doi:10.1097/MIB.0000000000000749
- Comerford I, Kara EE, McKenzie DR, McCall SR. Advances in understanding the pathogenesis of autoimmune disorders: focus on chemokines and lymphocyte trafficking. *Br J Haematol* (2014) 164(3):329–41. doi:10.1111/bjh.12616
- Rudolph H, Klopstein A, Gruber I, Blatti C, Lyck R, Engelhardt B. Postarrest stalling rather than crawling favors CD8(+) over CD4(+) T-cell migration across the blood-brain barrier under flow in vitro. *Eur J Immunol* (2016) 46(9):2187–203. doi:10.1002/eji.201546251
- Chaudhry A, Samstein RM, Treuting P, Liang Y, Pils MC, Heinrich JM, et al. Interleukin-10 signaling in regulatory T cells is required for suppression of Th17 cell-mediated inflammation. *Immunity* (2011) 34(4):566–78. doi:10.1016/j.immuni.2011.03.018
- Huber S, Gagliani N, Esplugues E, O'Connor W Jr, Huber FJ, Chaudhry A, et al. Th17 cells express interleukin-10 receptor and are controlled by Foxp3(-) and Foxp3+ regulatory CD4+ T cells in an interleukin-10-dependent manner. *Immunity* (2011) 34(4):554–65. doi:10.1016/j.immuni.2011.01.020
- Nouri M, Bredberg A, Westrom B, Lavasani S. Intestinal barrier dysfunction develops at the onset of experimental autoimmune encephalomyelitis, and

- can be induced by adoptive transfer of auto-reactive T cells. *PLoS One* (2014) 9(9):e106335. doi:10.1371/journal.pone.0106335
37. Ukena SN, Singh A, Dringenberg U, Engelhardt R, Seidler U, Hansen W, et al. Probiotic *Escherichia coli* Nissle 1917 inhibits leaky gut by enhancing mucosal integrity. *PLoS One* (2007) 2(12):e1308. doi:10.1371/journal.pone.0001308
 38. Fasano A. Zonulin and its regulation of intestinal barrier function: the biological door to inflammation, autoimmunity, and cancer. *Physiol Rev* (2011) 91(1):151–75. doi:10.1152/physrev.00003.2008
 39. Joint FAO/WHO Working Group. *Guidelines for the Evaluation of Probiotics in Food*. London: World Health Organization/Food and Agriculture Organization of the United Nations (2002).
 40. Senok AC, Ismaeel AY, Botta GA. Probiotics: facts and myths. *Clin Microbiol Infect* (2005) 11(12):958–66. doi:10.1111/j.1469-0691.2005.01228.x
 41. Jacobi CA, Malferteiner P. *Escherichia coli* Nissle 1917 (Mutaflo): new insights into an old probiotic bacterium. *Dig Dis* (2011) 29(6):600–7. doi:10.1159/000333307
 42. Guzy C, Paclik D, Schirbel A, Sonnenborn U, Wiedenmann B, Sturm A. The probiotic *Escherichia coli* strain Nissle 1917 induces gammadelta T cell apoptosis via caspase- and FasL-dependent pathways. *Int Immunol* (2008) 20(7):829–40. doi:10.1093/intimm/dxn041
 43. Yacyshyn B, Meddings J, Sadowski D, Bowen-Yacyshyn MB. Multiple sclerosis patients have peripheral blood CD45RO+ B cells and increased intestinal permeability. *Dig Dis Sci* (1996) 41(12):2493–8. doi:10.1007/BF02100148
 44. Langer-Gould A, Albers KB, Van Den Eeden SK, Nelson LM. Autoimmune diseases prior to the diagnosis of multiple sclerosis: a population-based case-control study. *Mult Scler* (2010) 16(7):855–61. doi:10.1177/1352458510369146
 45. Su L, Shen L, Clayburgh DR, Nalle SC, Sullivan EA, Meddings JB, et al. Targeted epithelial tight junction dysfunction causes immune activation and contributes to development of experimental colitis. *Gastroenterology* (2009) 136(2):551–63. doi:10.1053/j.gastro.2008.10.081
 46. Gallo RL, Hooper LV. Epithelial antimicrobial defence of the skin and intestine. *Nat Rev Immunol* (2012) 12(7):503–16. doi:10.1038/nri3228
 47. Suzuki T, Yoshinaga N, Tanabe S. Interleukin-6 (IL-6) regulates claudin-2 expression and tight junction permeability in intestinal epithelium. *J Biol Chem* (2011) 286(36):31263–71. doi:10.1074/jbc.M111.238147
 48. Furusawa Y, Obata Y, Hase K. Commensal microbiota regulates T cell fate decision in the gut. *Semin Immunopathol* (2015) 37(1):17–25. doi:10.1007/s00281-014-0455-3
 49. Kuhn KA, Stappenbeck TS. Peripheral education of the immune system by the colonic microbiota. *Semin Immunol* (2013) 25(5):364–9. doi:10.1016/j.smim.2013.10.002
 50. Chen J, Chia N, Kalari KR, Yao JZ, Novotna M, Soldan MM, et al. Multiple sclerosis patients have a distinct gut microbiota compared to healthy controls. *Sci Rep* (2016) 6:28484. doi:10.1038/srep28484
 51. O'Connor W Jr, Kamanaka M, Booth CJ, Town T, Nakae S, Iwakura Y, et al. A protective function for interleukin 17A in T cell-mediated intestinal inflammation. *Nat Immunol* (2009) 10(6):603–9. doi:10.1038/ni.1736
 52. Arima Y, Harada M, Kamimura D, Park JH, Kawano F, Yull FE, et al. Regional neural activation defines a gateway for autoreactive T cells to cross the blood-brain barrier. *Cell* (2012) 148(3):447–57. doi:10.1016/j.cell.2012.01.022
 53. Cross ML, Ganner A, Teilab D, Fray LM. Patterns of cytokine induction by gram-positive and gram-negative probiotic bacteria. *FEMS Immunol Med Microbiol* (2004) 42(2):173–80. doi:10.1016/j.femsim.2004.04.001
 54. Sturm A, Rilling K, Baumgart DC, Gargas K, Abou-Ghazale T, Raupach B, et al. *Escherichia coli* Nissle 1917 distinctively modulates T-cell cycling and expansion via toll-like receptor 2 signaling. *Infect Immun* (2005) 73(3):1452–65. doi:10.1128/IAI.73.3.1452-1465.2005
 55. Calcinaro F, Dionisi S, Marinaro M, Candeloro P, Bonato V, Marzotti S, et al. Oral probiotic administration induces interleukin-10 production and prevents spontaneous autoimmune diabetes in the non-obese diabetic mouse. *Diabetologia* (2005) 48(8):1565–75. doi:10.1007/s00125-005-1831-2
 56. Di Giacinto C, Marinaro M, Sanchez M, Strober W, Boirivant M. Probiotics ameliorate recurrent Th1-mediated murine colitis by inducing IL-10 and IL-10-dependent TGF-beta-bearing regulatory cells. *J Immunol* (2005) 174(6):3237–46. doi:10.4049/jimmunol.174.6.3237
 57. Khoury SJ, Hancock WW, Weiner HL. Oral tolerance to myelin basic protein and natural recovery from experimental autoimmune encephalomyelitis are associated with downregulation of inflammatory cytokines and differential upregulation of transforming growth factor beta, interleukin 4, and prostaglandin E expression in the brain. *J Exp Med* (1992) 176(5):1355–64.
 58. Bettelli E, Das MP, Howard ED, Weiner HL, Sobel RA, Kuchroo VK. IL-10 is critical in the regulation of autoimmune encephalomyelitis as demonstrated by studies of IL-10- and IL-4-deficient and transgenic mice. *J Immunol* (1998) 161(7):3299–306.
 59. Tsuji H, Oozer R, Matsuda K, Matsuki T, Ohta T, Nomoto K, et al. Molecular monitoring of the development of intestinal microbiota in Japanese infants. *Benef Microbes* (2012) 3(2):113–25. doi:10.3920/BM2011.0038
 60. Sassone-Corsi M, Nuccio SP, Liu H, Hernandez D, Vu CT, Takahashi AA, et al. Microcins mediate competition among Enterobacteriaceae in the inflamed gut. *Nature* (2016) 540:280–3. doi:10.1038/nature20557

Conflict of Interest Statement: The authors declare that the research was conducted in the absence of any commercial or financial relationships that could be construed as a potential conflict of interest.

Copyright © 2017 Secher, Kassem, Benamar, Bernard, Boury, Barreau, Oswald and Saoudi. This is an open-access article distributed under the terms of the Creative Commons Attribution License (CC BY). The use, distribution or reproduction in other forums is permitted, provided the original author(s) or licensor are credited and that the original publication in this journal is cited, in accordance with accepted academic practice. No use, distribution or reproduction is permitted which does not comply with these terms.