



Histological analysis of $\gamma\delta$ T lymphocytes infiltrating human triple-negative breast carcinomas

Jose Villacorta Hidalgo^{1,2,3}, Peter Bronsert^{1,4}, Marzenna Orlowska-Volk¹, Liliana B. Díaz³, Elmar Stickeler^{4,5}, Martin Werner^{1,4}, Annette Schmitt-Graeff¹, Gian Kayser¹, Miroslav Malkovsky⁶ and Paul Fisch^{1*}

¹ Department of Pathology, University of Freiburg Medical Center, Freiburg im Breisgau, Germany

² Faculty of Biology, University of Freiburg, Freiburg im Breisgau, Germany

³ University Hospital "José de San Martín," University of Buenos Aires, Buenos Aires, Argentina

⁴ Comprehensive Cancer Center, Freiburg im Breisgau, Germany

⁵ Department of Obstetrics and Gynecology, University of Freiburg Medical Center, Freiburg im Breisgau, Germany

⁶ Department of Medical Microbiology and Immunology, University of Wisconsin School of Medicine and Public Health, Madison, WI, USA

Edited by:

Dieter Kabelitz, Christian-Albrechts University Kiel, Germany

Reviewed by:

Tomasz Zal, University of Texas MD

Anderson Cancer Center, USA

Guangyong Peng, Saint Louis

University, USA

*Correspondence:

Paul Fisch, Department of Pathology, University of Freiburg Medical Center, Breisacher Str. 115a, Freiburg 79106, Germany

e-mail: paul.fisch@

uniklinik-freiburg.de

Breast cancer is the leading cause of cancer death in women and the second most common cancer worldwide after lung cancer. The remarkable heterogeneity of breast cancers influences numerous diagnostic, therapeutic, and prognostic factors. Triple-negative breast carcinomas (TNBCs) lack expression of HER2 and the estrogen and progesterone receptors and often contain lymphocytic infiltrates. Most of TNBCs are invasive ductal carcinomas (IDCs) with poor prognosis, whereas prognostically more favorable subtypes such as medullary breast carcinomas (MBCs) are somewhat less frequent. Infiltrating T-cells have been associated with an improved clinical outcome in TNBCs. The prognostic role of $\gamma\delta$ T-cells within CD3⁺ tumor-infiltrating T lymphocytes remains unclear. We analyzed 26 TNBCs, 14 IDCs, and 12 MBCs, using immunohistochemistry for the quantity and patterns of $\gamma\delta$ T-cell infiltrates within the tumor microenvironment. In both types of TNBCs, we found higher numbers of $\gamma\delta$ T-cells in comparison with normal breast tissues and fibroadenomas. The numbers of infiltrating $\gamma\delta$ T-cells were higher in MBCs than in IDCs. $\gamma\delta$ T-cells in MBCs were frequently located in direct contact with tumor cells, within the tumor and at its invasive border. In contrast, most $\gamma\delta$ T-cells in IDCs were found in clusters within the tumor stroma. These findings could be associated with the fact that the patient's prognosis in MBCs is better than that in IDCs. Further studies to characterize these $\gamma\delta$ T-cells at the molecular and functional level are in progress.

Keywords: $\gamma\delta$ T-cells, breast cancer, triple-negative breast cancer, histology, paraffin material

INTRODUCTION

Worldwide, breast cancer is the principal cause of cancer related deaths in women in developed and in developing countries (1). Breast cancer is a heterogeneous disease of numerous tumor subtypes with different biological characteristics and clinical prognosis (2). One subgroup with a particularly poor prognosis are triple-negative breast carcinomas (TNBCs) characterized by lack of estrogen receptor (ER), progesterone receptor (PR), and human epidermal growth factor receptor 2 (HER2) expression. TNBCs account for 10–17% of all breast carcinomas, depending on the sensitivity of tests used to define the ER, PR, and HER2 status (3) and frequently, these tumors contain marked lymphocytic infiltrates (4). TNBCs are generally high-grade tumors and mostly invasive ductal carcinomas (IDCs), although other types of breast cancers can also be triple negative such as the medullary breast carcinoma (MBC) (5, 6). MBCs represent only 3–5% of all breast cancers and are characterized by a well-circumscribed margin, a poorly differentiated nuclear grade, a high-mitotic rate, prominent syncytial growth in more than the 75% of the tumor area and a diffuse lymphoid infiltrate without intraductal components or micro-glandular features (7). And although the MBC's aggressive histological characteristics are very similar to those of high-grade

triple-negative IDCs, MBCs have generally a remarkably better prognosis than IDCs (7–9).

The association between tumor-infiltrating lymphocytes (TILs) and the clinical outcome has been well established in many different cancers and these findings initiated an increasing interest in valid markers of tumor behavior and treatment response (10–13). However, the numbers and composition of TILs may vary depending on the types of immune responses and antigens (14). Prominent infiltration by CD8⁺ T-cells has been generally associated with a better prognosis and response to therapies (15–18). In contrast, a predominance of some CD4⁺ T-cell subsets within TILs has been linked to a poorer outcome while the prognostic significance of increased numbers of regulatory T-cells (Tregs) remain controversial and may depend on the type of tumor (19, 20).

In this context, $\gamma\delta$ T-cells have been studied in distinct cancers as an interesting and intriguing part of the tumor microenvironment with demonstration of cytotoxicity *in vitro* against both solid and hematological malignancies (21–25). However, the identification and relevance of the different $\gamma\delta$ T-cell subsets within the tumor microenvironment remain poorly characterized. V γ 9V δ 2 T lymphocytes are the main subset in the human adult peripheral blood, where $\gamma\delta$ T-cells typically constitute about 5% of CD3⁺

lymphocytes. Besides V γ 9V δ 2 T-cells, lymphocytes expressing V δ 1 are typically found in human tissues (26, 27) such as intestine, mucosa, and skin. Even though they constitute only a small population of lymphocytes, $\gamma\delta$ T-cells may play a non-overlapping role in some human infections, autoimmunity (28), and tumor microenvironment (29, 30). The V γ 9V δ 2 T-cell subset recognizes phosphoantigens such as isopentenyl pyrophosphate (IPP). IPP is produced in all higher eukaryotic cells including human cancer cells by the mevalonate pathway. In contrast, many bacteria such as *Mycobacterium tuberculosis* and protozoa such as *Malaria* parasites use the non-mevalonate (1-deoxy-D-xylulose-5-phosphate; DOXP) pathway for the phosphoantigenic biosynthesis. (31). These antigens are presented to human V γ 9V δ 2 T-cells bound to the intracellular B30.2 domain of butyrophilin 3A1 (32). Antigens recognized by other human $\gamma\delta$ T-cell subsets remain poorly defined. It has been suggested that V δ 1 recognize MHC class I related molecules MICA, MICB, and ULBPs (21, 33). Infiltration by $\gamma\delta$ T-cells in human breast carcinomas and a potential role of cytotoxic V γ 9 δ 2 T-cells against breast cancer cells has been initially described by Bank et al. in 1993 (34).

Here, we analyzed the presence of $\gamma\delta$ T-cells in the human TIL immune microenvironment of 26 TNBCs comparing triple-negative IDC and triple-negative MBC specimens. Since the amounts of TILs in primary TNBCs appear to be associated with prognosis (35), we studied these tumors, focusing on the possibility that immunohistochemistry (IHC) of $\gamma\delta$ T-cell infiltration may help our understanding of the substantial prognostic difference between IDCs and MBCs.

MATERIALS AND METHODS

TISSUE SPECIMENS

We analyzed 30 formalin-fixed, paraffin-embedded (FFPE) specimens from patients with TNBCs that were obtained between 2003 and 2011 and preserved in the archives of the Institute of Clinical Pathology of the Freiburg University Medical Center. From these, we selected 14 IDC and 12 MBC samples with an equivalent lymphocytic infiltration of at least 50% of the sample area in HE staining (Table 1). All specimens in this study were obtained before the patients were treated with chemotherapy or radiotherapy. In addition, we analyzed for comparison non-malignant breast tissues (11 normal breast tissues and 7 fibroadenomas). Controls included sections from two TCR $\gamma\delta$ lymphomas (kindly provided by Prof. Müller-Hermelink, Würzburg). Negative controls included TCR $\alpha\beta$ lymphomas and isotype controls. The age of the patients ranged between 43 and 82 years (median 57 years). Type of tumor and staging were performed according to the classification of the Union for International Cancer Control (UICC). All tumors included in this study were grade III according to the modified Bloom–Richardson classification (36). MBC was diagnosed using the Ridolfi criteria (7). The Ethics Committee of the University of Freiburg Medical Center approved the use of the patient materials in this study for morphologic analyses.

IMMUNOHISTOCHEMISTRY

Sections (2 μ m) were mounted on Superfrost plus® Adhesion glass slides (R. Langenbrinck, Emmendingen, Germany. Code 03-0060) after dewaxing and rehydration. Antigen retrieval was performed

Table 1 | Characteristics of patients with grade 3 triple negative tumors.

Diagnosis	Age (mean)	Tumor size mean (cm)	Stage (TNM) ^a		
			N0	N1	N2
IDC (n = 14)	57.5 (\pm 11.7)	2.7 (\pm 1.93)	10 ^b	1	3
MBC (n = 12)	59.1 (\pm 13.3)	2.2 (\pm 1.28)	7	4	1

^aAll patients were M0.

^bNumbers of patients.

Table 2 | Antibodies used in immunohistochemistry.

Antibody	Dilution	Retrieval buffer	Incubation time (min)
Anti-TCR $\gamma\delta$ mAb	1:40	Citrate pH 6	30
CD3 antiserum	Undiluted	Dako pH 9	30
Caspase-3 c antiserum	1:700	Dako pH 6.1	45

using the buffers as detailed in Table 2. Endogenous peroxidase activity was blocked by the peroxidase blocking reagent (EnVision™ FLEX Systems FLEX, Dako, Carpinteria, CA, USA. Code S2023) for the rabbit CD3 antiserum that was detected by the peroxidase based detection system. For the alkaline phosphatase based detection method [anti-TCR $\gamma\delta$ monoclonal antibody (mAb) and caspase-3 polyclonal antiserum], non-specific protein binding was blocked using 3% BSA in PBS. Antigen retrieval was performed in citrate buffer at pH 6 in a pressure cooker (anti-TCR $\gamma\delta$ mAb), in Dako pH 6.1 buffer (anti-caspase-3 antiserum), or in Dako pH 9 EDTA buffer (anti-CD3 antiserum) in a steam cooking machine (Table 2). The use of a microwave oven did not produce good results. Sections were incubated with primary antibodies that were rabbit-anti-human CD3 polyclonal antiserum (EnVision™ FLEX Systems Dako. Code IS503, undiluted), mouse anti-human TCR $\gamma\delta$ mAb (clone γ 3.20, Thermo Scientific, Germany. Code 10772535, 1:40) and rabbit-anti-human cleaved-caspase-3 antiserum (Cell Signall Corp., Danvers, MA, USA, Code 9662S, 1:700). Horseradish peroxidase-conjugated secondary antibodies (EnVision™ FLEX Systems Dako, Code 5007) and alkaline phosphatase-conjugated secondary antibodies (Dako REAL™ Detection System, Alkaline Phosphatase/RED, rabbit/mouse, Code K5005) were employed for detection of the primary antibodies, a blue chromogen was used to detect the cleaved-caspase-3 antibody (Dako BCIP/NBT Substrate System Code K0598) and hematoxylin was used as a counterstain.

MICROSCOPY

Immunohistochemistry was analyzed using an Axioplan® microscope (Carl Zeiss, Jena, Germany), equipped with a Axiocam® MRc (Carl Zeiss), digital camera. Twenty randomly selected high-power fields (HPF) of each sample were photographed (10 from the tumor parenchyma and 10 from the stroma). A HPF 400 \times was defined using a 40 \times objective and a 10 \times ocular magnification equipped with a 26-mm ocular reticule (Carl Zeiss). For the caspase-3 analysis, 20 HPF were considered from tumor areas.

The cells were counted manually in all sections by two different investigators.

STATISTICAL ANALYSIS

The unpaired *t*-test using the GraphPad Prism Software (GraphPad Inc., San Diego, CA, USA. Version 6) was used for statistical analysis.

RESULTS

DISTRIBUTION OF TCR $\gamma\delta$ ⁺ T-CELLS IN NORMAL BREAST TISSUES

We used the mAb γ 3.20 that is able to detect $\gamma\delta$ T-cells in paraffin-embedded material (37) for IHC studies of normal breast tissues ($n = 11$). There were only few CD3⁺ cells in normal breast sections (Figure 1A) and very few if any expressed the TCR $\gamma\delta$ (Figure 1B). In contrast, infiltrations by $\gamma\delta$ T-cells in FFPE samples of TCR $\gamma\delta$ lymphomas (Figure 1C) stained positive by the anti-TCR $\gamma\delta$ mAb. $\gamma\delta$ T-cells were also detectable in tonsils and other normal human tissues (data not shown).

TCR $\gamma\delta$ ⁺ CELLS IN IDCs AND MBCs

Next, we examined triple-negative IDCs ($n = 14$) and MBCs ($n = 12$) for the presence of $\gamma\delta$ T-cells since these tumors are frequently infiltrated by lymphocytes (38). Indeed, the lymphocytic infiltrates in IDCs and MBCs contained many $\gamma\delta$ T-cells (Figure 2). Although both types of TNBCs, contained conspicuous numbers of $\gamma\delta$ T-cells (Table 3), the TCR $\gamma\delta$ ⁺ cells within the TILs were more frequently located in the stroma of the IDC sections (Figures 2A,B), while in the MBC sections TCR $\gamma\delta$ ⁺ cells were typically located in the tumor parenchyma (Figure 2C) and at the invasive tumor cell border (Figure 2D). Nevertheless, this distinction was not absolute since individual IDC cases contained many $\gamma\delta$ T-cells both in the tumor stroma and parenchyma (Figure 3). However, there were significantly more TCR $\gamma\delta$ ⁺ cells within the tumor parenchyma in MBCs than in IDCs (Table 3).

TCR $\gamma\delta$ ⁺ CELLS IN FIBROCYSTIC BREASTS

For comparison with the malignant tumors IDC and MBC, we analyzed TCR $\gamma\delta$ ⁺ cells in fibroadenomas ($n = 7$) that are benign breast lumps composed of two elements, epithelium and stroma. Some TCR $\gamma\delta$ ⁺ T-cells were present in the lymphocytic infiltrates in fibrocystic breasts (Figures 4A,B), rarely at the border or within the epithelial component, but the amount of TCR $\gamma\delta$ ⁺ cells was much lower than in the TNBC.

ACTIVATED CASPASE-3⁺ TUMOR CELLS IN TRIPLE-NEGATIVE IDCs AND MBCs

Cells positive for cleaved-caspase-3 (CC3) are undergoing apoptosis that could be induced by interaction with cytotoxic T-cells (39). We stained our FFPE tumor sections by IHC for the presence of activated caspase-3. Apoptotic tumor cells were detectable in both types of TNBC. There were significantly more CC3⁺ cells in the MBC-type than in the IDC type of TNBC (Figure 5; Table 3).

DISCUSSION

The functional importance of TILs in breast cancer is controversial. Most studies show that tumor-infiltrating CD8⁺ lymphocytes

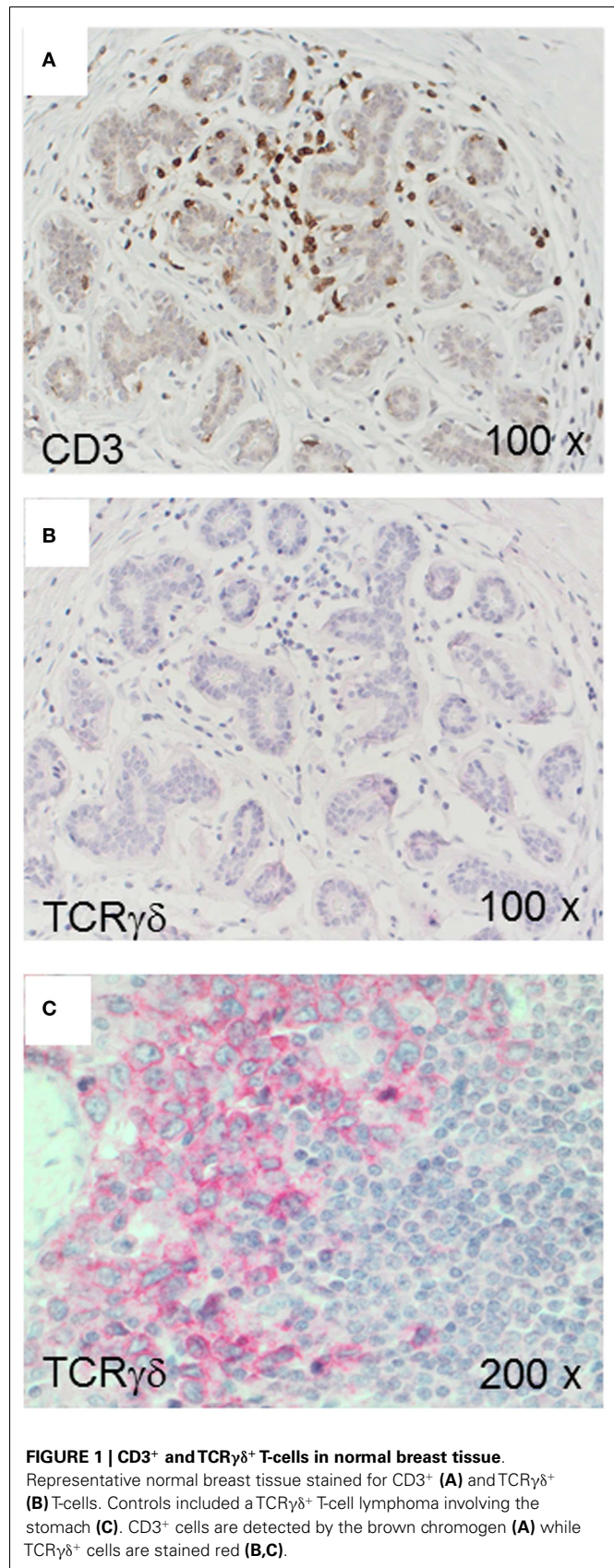


FIGURE 1 | CD3⁺ and TCR $\gamma\delta$ ⁺ T-cells in normal breast tissue.

Representative normal breast tissue stained for CD3⁺ (A) and TCR $\gamma\delta$ ⁺ (B) T-cells. Controls included a TCR $\gamma\delta$ ⁺ T-cell lymphoma involving the stomach (C). CD3⁺ cells are detected by the brown chromogen (A) while TCR $\gamma\delta$ ⁺ cells are stained red (B,C).

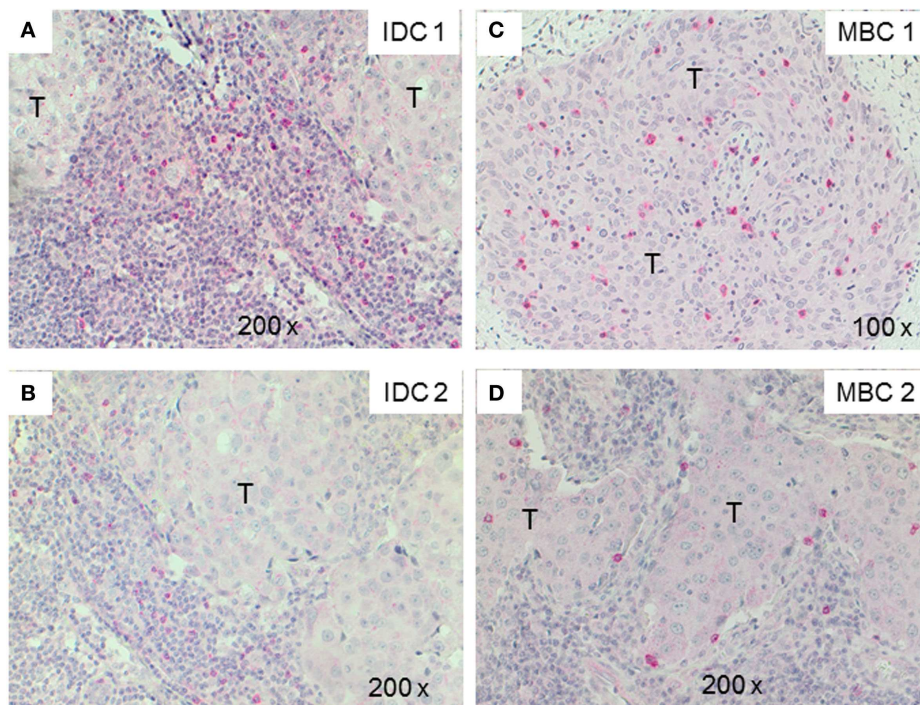


FIGURE 2 | TCR $\gamma\delta$ ⁺ T-cells in representative triple negative invasive ductal carcinomas (IDCs) and medullary breast carcinomas (MBCs). Two representative cases of IDC (A,B) and MBC (C,D) were

stained by IHC for TCR $\gamma\delta$ ⁺ T-cells. The tumor area is marked with T, TCR $\gamma\delta$ ⁺ T-cells are detected by the red chromogen. The tumor area is marked ("T").

in breast cancer show a positive correlation with patient survival (15–18, 40). FOXP3⁺ regulatory TILs were a favorable prognostic factor in the HER2⁺/ER⁻ breast cancers, but an adverse prognostic indicator in ER⁺ breast cancer (19, 20, 41). In this study, we investigated by IHC the presence of $\gamma\delta$ T-cells in human TNBCs comparing the IDC- and MBC-type tumors. TNBCs have attracted much attention in recent years because there are no targeted therapies for this group of breast cancers and because their profile overlaps with that of “basal-like carcinomas” (42). Histologically, TNBCs are more often the IDC type than the MBC one and are frequently displaying prominent lymphocyte infiltrates. To our knowledge, this is the first IHC analysis of $\gamma\delta$ T-cells within TILs in TNBCs and the first study using FFPE material. Previous studies detected $\gamma\delta$ T-cells in human breast carcinomas by IHC in frozen sections (34, 43). We found significant numbers of $\gamma\delta$ T-cells as constituents of TILs in both the IDC- and the MBC-type of TNBC. In most IDCs, the $\gamma\delta$ T-cells were preferentially located in the stroma and to a lesser degree in the tumor parenchyma. In MBCs, the $\gamma\delta$ T-cells were mainly present within the tumor epithelium or at its invasive border (Figure 2; Table 3). The intratumoral infiltration by $\gamma\delta$ T-cells in IDCs was heterogeneous. Most IDC specimens showed relatively few $\gamma\delta$ T-cells in the tumor parenchyma in comparison with MBCs. However, in some IDCs, a manifest intratumoral $\gamma\delta$ T-cell infiltrate was present (Figure 3). This may be related to the fact that TNBCs themselves constitute a heterogeneous subgroup, with some tumors conceivably having an intraductal and a medullary component and thus in some cases,

distinguishing between the IDC- and the MBC-type may be difficult (44). What could be the reason for the differences that we observed in the $\gamma\delta$ T-cell infiltration patterns between most IDCs and the MBCs? Potential explanations include different antigens for $\gamma\delta$ T-cells expressed by the tumor cells or different galectins (45) or chemokines such as CCL2 (46) present in the particular tumor microenvironment. The apoptotic tumor cells as detected by CC3 expression (Figure 5) might reflect the intratumoral infiltration by cytotoxic T-cells, such as $\gamma\delta$ T-cells that were in direct contact with the tumor cells (Figures 2 and 3). This is compatible with previous findings showing that there are more apoptotic tumor cells in MBC than in IDC (47, 48) and could be linked to the overall better prognosis of MBC.

We found that $\gamma\delta$ T-cells are rare in normal breast tissues (Figure 1) and scarce within the lymphocytic infiltrates in fibroadenomas (Figure 4) suggesting that $\gamma\delta$ T-cells are actively infiltrating TNBCs. The inflammatory immune responses or soluble factors secreted by the tumor cells might induce infiltration by $\gamma\delta$ T-cells in breast carcinomas. For instance, it is possible that some TNBCs or “basal-like” breast carcinomas (49) secrete soluble chemokines attracting $\gamma\delta$ T-cells. Also, it is conceivable that TNBCs may express $\gamma\delta$ T-cell-recognizable antigens that are absent in other breast carcinomas and normal breast tissues. $\gamma\delta$ T-cells in breast carcinomas could play a protective role as observed for CD8⁺ T-cells. However, one study by Ma et al. performed on frozen sections from a heterogeneous group of breast cancers suggested that intratumoral $\gamma\delta$ T-cells correlated

with the HER2 expression status, breast cancer progression and poor patient survival rates (43). These findings are compatible with the observation that breast cancer-derived $\gamma\delta$ regulatory T-cells induce immunosenescence, resulting in suppression of innate

and adaptive immunity (50). In the study by Ma et al. (43), the patients' tumors were heterogeneous and the $\gamma\delta$ T-cell numbers correlated with Tregs, therefore, it is not possible to exclude that other variables than $\gamma\delta$ T-cells were involved in tumor progression.

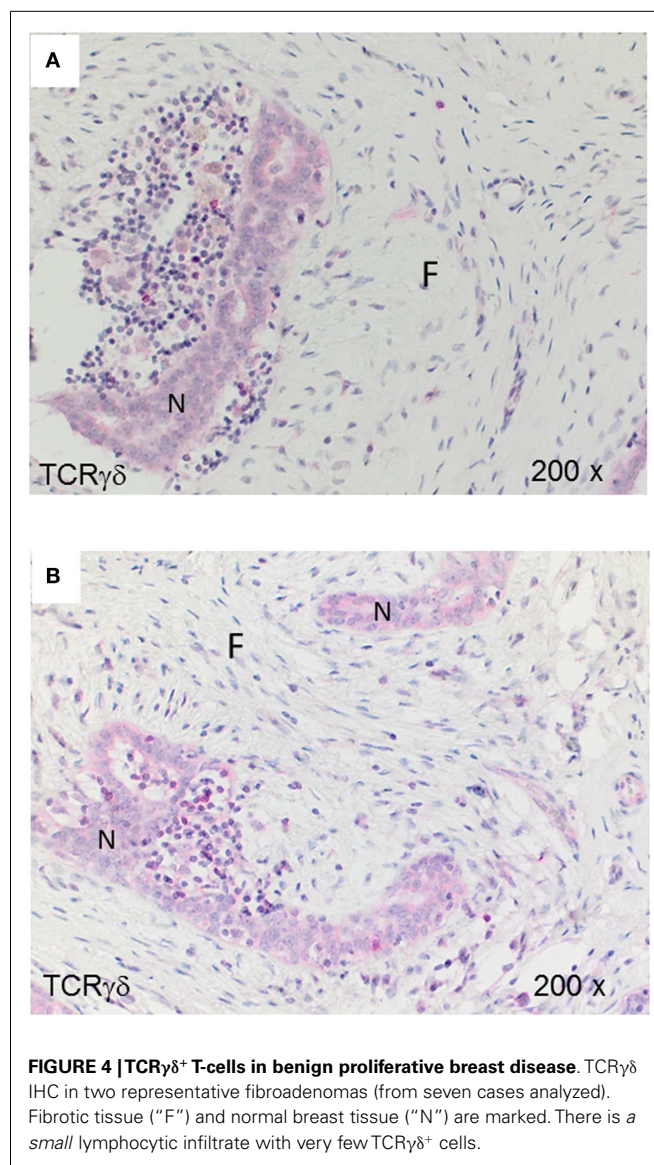
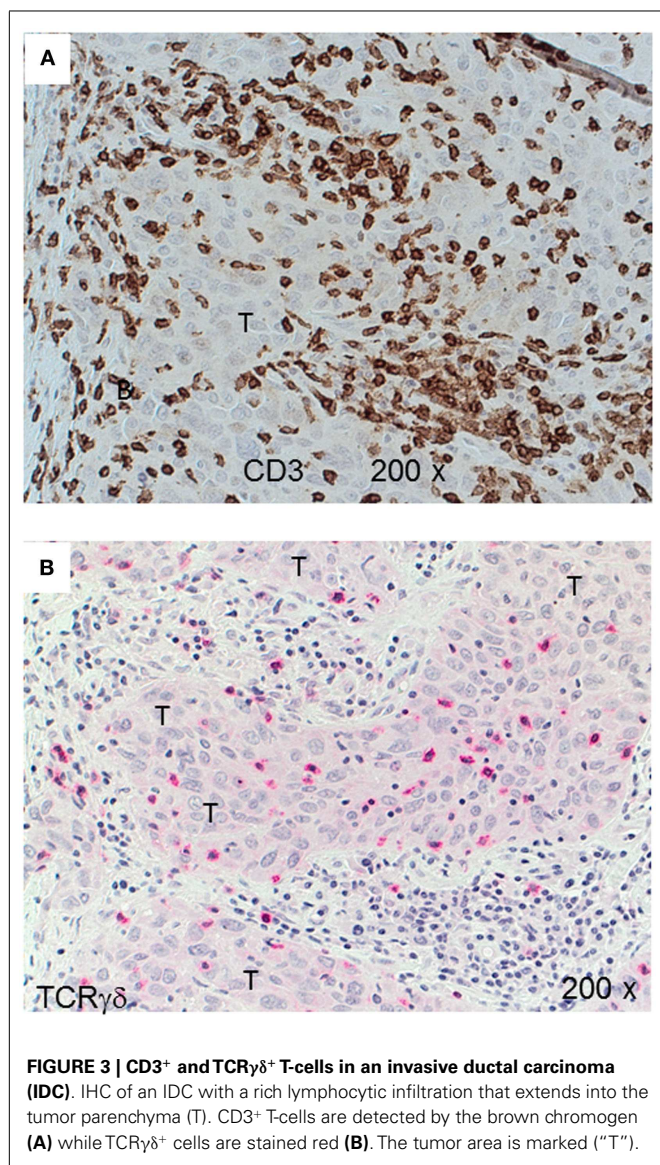


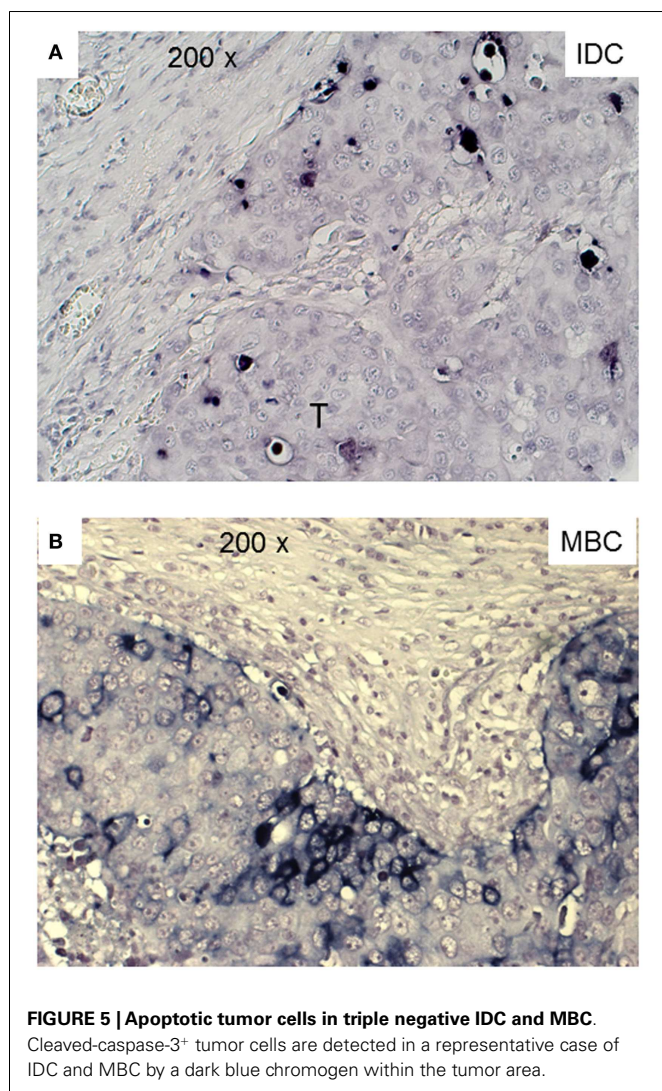
Table 3 | CD3⁺ and TCR $\gamma\delta$ ⁺ T-cells in the stroma and parenchyma of IDC and MBC.

	CD3 ⁺ cells		TCR $\gamma\delta$ ⁺ cells		Cleaved-caspase-3 ⁺ cells
	Stroma	Parenchyma	Stroma	Parenchyma	Tumor
IDC (n = 14)	27 (\pm 9) ^a	16 (\pm 7)*	6 (\pm 4)	2 (\pm 2)**	4 (\pm 2)*
MBC (n = 12)	24 (\pm 2)	24 (\pm 9)	4 (\pm 2)	8 (\pm 4)	7 (\pm 3)

^aThe numbers reflect the mean positive cells per HPF (determined from the means of a total of 20 HPF counted for each patient) of IDC (n = 14) and MBC patients (n = 12). SD reflects the standard variation within the cohorts of IDC and MBC patients.

*The difference between the CD3⁺ cells within stroma and parenchyma was statistically significant in IDC ($p < 0.05$) but not in MBC ($p = 0.901$). In addition, apoptotic (CC3⁺) cells were significantly higher in MBC than in IDC ($p < 0.05$).

**The difference in the higher amount of TCR $\gamma\delta$ T-cells in the tumor parenchyma in MBC than in IDC was statistically highly significant ($p < 0.001$).



It might be interesting to investigate the TNBC infiltrating $\gamma\delta$ T-cells at the molecular level to define their variable gene expression and whether they can recognize breast cancer cell lines. A previous study in colon cancer suggested that intratumoral $V\delta 1^+$ T-cells were cytotoxic and secreted interferon- γ toward epithelial tumor cells. Our preliminary results where we isolated $\gamma\delta$ T-cells from TNBCs by microdissection followed by single-cell PCR suggest that the $\gamma\delta$ T-cells in these tumors do not represent the $V\gamma 9V\delta 2$ population in the blood, but that they express the $V\delta 1$, $V\delta 3$, and $V\delta 4$ genes (data not shown).

ACKNOWLEDGMENTS

José Villacorta Hidalgo is supported by a Ph.D. fellowship from the Deutscher Akademischer Austauschdienst (DAAD). We are indebted to Katja Gräwe, Markus Kühs, Nicola Bittermann, and Bärbel Weinhold for instructions and technical guidance, Lisandro Orbea for assistance with the analysis of histological specimens. We thank Professor Dr. Müller-Hermelink, Würzburg for providing the FFPE Material from TCR $\gamma\delta$ lymphomas, Professor Christoph Borner for expert advice.

REFERENCES

1. Ferlay J, Soerjomataram I, Ervik M, Dikshit R, Eser S, Mathers C, et al. *GLOBOCAN 2012 v1.0, Cancer Incidence and Mortality Worldwide: IARC Cancer Base No. 11* [Internet]. Lyon: International Agency for Research on Cancer (2013). Available from: <http://globocan.iarc.fr>
2. Metzger-Filho O, Tutt A, de Azambuja E, Saini KS, Viale G, Loi S, et al. Dissecting the heterogeneity of triple-negative breast cancer. *J Clin Oncol* (2012) **15**:1879–87. doi:10.1200/JCO.2011.38.2010
3. Loi S, Michiels S, Salgado R, Sirtaine N, Jose V, Fumagalli D, et al. Tumor infiltrating lymphocytes are prognostic in triple negative breast cancer and predictive for trastuzumab benefit in early breast cancer: results from the FinHER trial. *Ann Oncol* (2014) **25**:1544–50. doi:10.1093/annonc/mdl112
4. Adams S, Gray R, Demaria S, Goldstein LJ, Perez EA, Shulman LN, et al. Prognostic value of tumor-infiltrating lymphocytes in triple-negative breast cancers from two phase III randomized adjuvant breast cancer trials: ECOG 2197 and ECOG 1199. *J Clin Oncol* (2014) **32**:2959–66. doi:10.1200/JCO.2013.55.0491
5. Dent R, Trudeau M, Pritchard KI, Hanna WM, Kahn HK, Sawka CA, et al. Triple-negative breast cancer: clinical features and patterns of recurrence. *Clin Cancer Res* (2007) **15**(Pt 1):4429–34. doi:10.1158/1078-0432.CCR-06-3045
6. Reis-Filho JS, Tutt AN. Triple negative tumours: a critical review. *Histopathology* (2008) **52**:108–18. doi:10.1111/j.1365-2559.2007.02889.x
7. Ridolfi RL, Rosen PP, Port A, Kinne D, Miké V. Medullary carcinoma of the breast: a clinicopathologic study with 10 year follow-up. *Cancer* (1977) **40**:1365–85. doi:10.1002/1097-0142(197710)40:4<1365::AID-CNCR2820400402>3.0.CO;2-N
8. Huober J, Gelber S, Goldhirsch A, Coates AS, Viale G, Öhlschlegel C, et al. Prognosis of medullary breast cancer: analysis of 13 International Breast Cancer Study Group (IBCSG) trials. *Ann Oncol* (2012) **23**(11):2843–51. doi:10.1093/annonc/mds105
9. Rosen PP. *Rosen's Breast Pathology*. 3rd ed. (Vol. 15). Dover: Lippincott Williams & Wilkins (2008). p. 449–67.
10. Galon J, Costes A, Sanchez-Cabo F, Kirilovsky A, Mlecnik B, Lagorce-Pages C, et al. Type, density, and location of immune cells within human colorectal tumors predict clinical outcome. *Science* (2006) **313**:1960–4. doi:10.1126/science.1129139
11. Zhang L, Conejo-Garcia JR, Katsaros D, Gimotty PA, Massobrio M, Regnani G, et al. Intratumoral T cells, recurrence, and survival in epithelial ovarian cancer. *N Engl J Med* (2003) **348**:203–13. doi:10.1056/NEJMoa020177
12. Kawai O, Ishii G, Kubota K, Murata Y, Naito Y, Mizuno T, et al. Predominant infiltration of macrophages and CD8⁺ T Cells in cancer nests is a significant predictor of survival in stage IV non-small cell lung cancer. *Cancer* (2008) **113**:1387–95. doi:10.1002/cncr.23712
13. Aaltomaa S, Lipponen P, Eskelinen M, Kosma VM, Marin S, Alhava E, et al. Lymphocyte infiltrates as a prognostic variable in female breast cancer. *Eur J Cancer* (1992) **28A**:859–64. doi:10.1016/0959-8049(92)90134-N
14. Pagès F, Galon J, Dieu-Nosjean MC, Tartour E, Sautès-Fridman C, Fridman WH. Immune infiltration in human tumors: a prognostic factor that should not be ignored. *Oncogene* (2010) **29**(8):1093–102. doi:10.1038/onc.2009.416
15. Fukunaga A, Miyamoto M, Cho Y, Murakami S, Kawarada Y, Oshikiri T, et al. CD8⁺ tumor-infiltrating lymphocytes together with CD4⁺ tumor-infiltrating lymphocytes and dendritic cells improve the prognosis of patients with pancreatic adenocarcinoma. *Pancreas* (2004) **28**:e26–31. doi:10.1097/00006676-200401000-00023
16. Clemente CG, Mihm MC Jr, Bufalino R, Zurrida S, Collini P, Cascinelli N. Prognostic value of tumor infiltrating lymphocytes in the vertical growth phase of primary cutaneous melanoma. *Cancer* (1996) **77**(7):1303–10. doi:10.1002/(SICI)1097-0142(19960401)77:7<1303::AID-CNCR12>3.0.CO;2-5
17. Schumacher K, Haensch W, Roefzaad C, Schlag PM. Prognostic significance of activated CD8⁺ T cell infiltrations within esophageal carcinomas. *Cancer Res* (2001) **61**:3932–6.
18. Seo AN, Lee HJ, Kim EJ, Kim HJ, Jang MH, Lee HE, et al. Tumour-infiltrating CD8⁺ lymphocytes as an independent predictive factor for pathological complete response to primary systemic therapy in breast cancer. *Br J Cancer* (2013) **109**(10):2705–13. doi:10.1038/bjc.2013.634
19. Liu S, Foulkes WD, Leung S, Gao D, Lau S, Kos Z, et al. Prognostic significance of FOXP3⁺ tumor-infiltrating lymphocytes in breast cancer depends on estrogen receptor and human epidermal growth factor receptor-2 expression status and concurrent cytotoxic T-cell infiltration. *Breast Cancer Res* (2014) **16**(5):432. doi:10.1186/s13058-014-0432-8

20. Fu J, Zhang Z, Zhou L, Qi Z, Xing S, Lv J, et al. Impairment of CD4+ cytotoxic T cells predicts poor survival and high recurrence rates in patients with hepatocellular carcinoma. *Hepatology* (2013) **58**(1):139–49. doi:10.1002/hep.26054
21. Groh V, Rhinehart R, Secrist H, Bauer S, Grabstein KH, Spies T. Broad tumor-associated expression and recognition by tumor-derived $\gamma\delta$ T cells of MICA and MICB. *Proc Natl Acad Sci U S A* (1999) **96**:6879–84. doi:10.1073/pnas.96.12.6879
22. Vetter CS, Groh V, Straten P, Spies T, Bröcker EB, Becker JC. Expression of stress-induced MHC class I related chain molecules on human melanoma. *J Invest Dermatol* (2002) **118**(4):600–5. doi:10.1046/j.1523-1747.2002.01700.x
23. Todaro M, D'Asaro M, Caccamo N, Iovino F, Francipane MG, Meraviglia S, et al. Efficient killing of human colon cancer stem cells by $\gamma\delta$ T lymphocytes. *J Immunol* (2009) **182**:7287–96. doi:10.4049/jimmunol.0804288
24. Viey E, Fromont G, Escudier B, Morel Y, Da Rocha S, Chouaib S, et al. Phosphostim-activated $\gamma\delta$ T cells kill autologous metastatic renal cell carcinoma. *J Immunol* (2005) **174**(3):1338–47. doi:10.4049/jimmunol.174.3.1338
25. Mauerer MJ, Martin D, Walter W, Liu K, Zitvogel L, Halusczyk K, et al. Human intestinal V δ + lymphocytes recognize tumor cells of epithelial origin. *J Exp Med* (1996) **183**(4):1681–96. doi:10.1084/jem.183.4.1681
26. Chien YH, Bonneville M. $\gamma\delta$ T cell receptors. *Cell Mol Life Sci* (2006) **63**(18):2089–94. doi:10.1007/s00018-006-6020-z
27. Viney J, MacDonald TT, Spencer J. $\gamma\delta$ T cells in the gut epithelium. *Gut* (1990) **31**(8):841–4. doi:10.1136/gut.31.8.841
28. Hohlfeld R, Engel AG, Li K, Harper MC. Polymyositis mediated by T lymphocytes that express the $\gamma\delta$ receptor. *N Engl J Med* (1991) **324**(13):877–81. doi:10.1056/NEJM199103283241303
29. Vantourout P, Hayday A. Six-of-the-best: unique contributions of $\gamma\delta$ T cells to immunology. *Nat Rev Immunol* (2013) **13**(2):88–100. doi:10.1038/nri3384
30. Hayday A, Tigelaar R. Immunoregulation in the tissues by $\gamma\delta$ T cells. *Nat Rev Immunol* (2003) **3**(3):233–42. doi:10.1038/nri1030
31. Behr C, Poupot R, Peyrat MA, Poquet Y, Constant P, Dubois P, et al. *Plasmodium falciparum* stimuli for human $\gamma\delta$ T cells are related to phosphorylated antigens of mycobacteria. *Infect Immun* (1996) **64**(8):2892–6.
32. Sandstrom A, Peigné CM, Léger A, Crooks JE, Konczak F, Gesnel MC, et al. The intracellular B30.2 domain of butyrophilin 3A1 binds phosphoantigens to mediate activation of human V γ 9V δ 2 T cells. *Immunity* (2014) **40**(4):490–500. doi:10.1016/j.immuni.2014.03.003
33. Poggi A, Venturino C, Catellani S, Clavio M, Miglino M, Gobbi M, et al. V δ 1 T lymphocytes from B-CLL patients recognize ULBP3 expressed on leukemic B cells and up-regulated by trans-retinoic acid. *Cancer Res* (2004) **64**(24):9172–9. doi:10.1158/0008-5472.CAN-04-2417
34. Bank I, Book M, Huszar M, Baram Y, Schnirer I, Brenner HV. δ 2+ $\gamma\delta$ T lymphocytes are cytotoxic to the MCF7 breast carcinoma cell line and can be detected among the T cells that infiltrate breast tumors. *Clin Immunol Immunopathol* (1993) **67**(1):17–24. doi:10.1006/clin.1993.1040
35. Loi S. Host antitumor immunity plays a role in the survival of patients with newly diagnosed triple-negative breast cancer. *J Clin Oncol* (2014) **32**(27):2935–7. doi:10.1200/JCO.2014.56.7677
36. Elston CW, Ellis IO. Pathological prognostic factors in breast cancer. I. The value of histological grade in breast cancer: experience from a large study with long-term follow-up. *Histopathology* (1991) **19**(5):403–10. doi:10.1111/j.1365-2559.1991.tb00229.x
37. Rouillet M, Gheith SM, Mauger J, Junkins-Hopkins JM, Choi JK. Percentage of $\gamma\delta$ T cells in panniculitis by paraffin immunohistochemical analysis. *Am J Clin Pathol* (2009) **131**(6):820–6. doi:10.1309/AJCPMG37MXKYPUBE
38. Denkert C, Loibl S, Noske A, Roller M, Müller BM, Komor M, et al. Tumor-associated lymphocytes as an independent predictor of response to neoadjuvant chemotherapy in breast cancer. *J Clin Oncol* (2010) **28**(1):105–13. doi:10.1200/JCO.2009.23.7370
39. Duan WR, Garner DS, Williams SD, Funckes-Shippy CL, Spath IS, Blomme EA. Comparison of immunohistochemistry for activated caspase-3 and cleaved cytokeratin 18 with the TUNEL method for quantification of apoptosis in histological sections of PC-3 subcutaneous xenografts. *J Pathol* (2003) **199**(2):221–8. doi:10.1002/path.1289
40. Mahmoud SM, Paish EC, Powe DG, Macmillan RD, Grainge MJ, Lee AH, et al. Tumor-infiltrating CD8+ lymphocytes predict clinical outcome in breast cancer. *J Clin Oncol* (2011) **29**(15):1949–55. doi:10.1200/JCO.2010.30.5037
41. Gobert M, Treilleux I, Bendriss-Vermare N, Bachelot T, Goddard-Leon S, Arfi V, et al. Regulatory T cells recruited through CCL22/CCR4 are selectively activated in lymphoid infiltrates surrounding primary breast tumors and lead to an adverse clinical outcome. *Cancer Res* (2009) **69**:2000–9. doi:10.1158/0008-5472.CAN-08-2360
42. Badve S, Dabbs DJ, Schnitt SJ, Baehner FL, Decker T, Eusebi V, et al. Basal-like and triple-negative breast cancers: a critical review with an emphasis on the implications for pathologists and oncologists. *Mod Pathol* (2011) **24**(2):157–67. doi:10.1038/modpathol.2010.200
43. Ma C, Zhang Q, Ye J, Wang F, Zhang Y, Wevers E, et al. Tumor-infiltrating $\gamma\delta$ T lymphocytes predict clinical outcome in human breast cancer. *J Immunol* (2012) **189**(10):5029–36. doi:10.4049/jimmunol.1201892
44. Flucke U, Flucke MT, Hoy L, Breuer E, Goebels R, Rhiem K, et al. Distinguishing medullary carcinoma of the breast from high-grade hormone receptor-negative invasive ductal carcinoma: an immunohistochemical approach. *Histopathology* (2010) **56**(7):852–9. doi:10.1111/j.1365-2559.2010.03555.x
45. Kostianets O, Antoniuk S, Filonenko V, Kiyamova R. Immunohistochemical analysis of medullary breast carcinoma autoantigens in different histological types of breast carcinomas. *Diagn Pathol* (2012) **7**:161. doi:10.1186/1746-1596-7-161
46. Lança T, Costa MF, Gonçalves-Sousa N, Rei M, Grosso AR, Penido C, et al. Protective role of the inflammatory CCR2/CCL2 chemokine pathway through recruitment of type 1 cytotoxic $\gamma\delta$ T lymphocytes to tumor beds. *J Immunol* (2013) **190**(12):6673–80. doi:10.4049/jimmunol.1300434
47. Kajiwara M, Toyoshima S, Yao T, Tanaka M, Tsuneyoshi M. Apoptosis and cell proliferation in medullary carcinoma of the breast: a comparative study between medullary and non-medullary carcinoma using the TUNEL method and immunohistochemistry. *J Surg Oncol* (1999) **70**(4):209–16. doi:10.1002/(SICI)1096-9098(199904)70:4<209::AID-JSO2>3.0.CO;2-6
48. Yakirevich E, Maroun L, Cohen O, Izhak OB, Rennert G, Resnick MB. Apoptosis, proliferation, and Fas (APO-1, CD95)/Fas ligand expression in medullary carcinoma of the breast. *J Pathol* (2000) **192**(2):166–73. doi:10.1002/1096-9896(2000)9999:9999<::AID-PATH689>3.3.CO;2-1
49. Vincent-Salomon A, Gruel N, Lucchesi C, MacGrogan G, Dendale R, Sigal-Zafrani B, et al. Identification of typical medullary breast carcinoma as a genomic sub-group of basal-like carcinomas, a heterogeneous new molecular entity. *Breast Cancer Res* (2007) **9**(2):R24. doi:10.1186/bcr1666
50. Ye J, Ma C, Hsueh EC, Eickhoff CS, Zhang Y, Varvares MA, et al. Tumor-derived $\gamma\delta$ regulatory T cells suppress innate and adaptive immunity through the induction of immunosenescence. *J Immunol* (2013) **190**(5):2403–14. doi:10.4049/jimmunol.1202369

Conflict of Interest Statement: The authors declare that the research was conducted in the absence of any commercial or financial relationships that could be construed as a potential conflict of interest.

Received: 20 October 2014; accepted: 26 November 2014; published online: 10 December 2014.

Citation: Hidalgo JV, Bronsert P, Orlowska-Volk M, Díaz LB, Stickeler E, Werner M, Schmitt-Graeff A, Kayser G, Malkovsky M and Fisch P (2014) Histological analysis of $\gamma\delta$ T lymphocytes infiltrating human triple-negative breast carcinomas. *Front. Immunol.* 5:632. doi: 10.3389/fimmu.2014.00632

This article was submitted to *T Cell Biology*, a section of the journal *Frontiers in Immunology*.

Copyright © 2014 Hidalgo, Bronsert, Orlowska-Volk, Díaz, Stickeler, Werner, Schmitt-Graeff, Kayser, Malkovsky and Fisch. This is an open-access article distributed under the terms of the Creative Commons Attribution License (CC BY). The use, distribution or reproduction in other forums is permitted, provided the original author(s) or licensor are credited and that the original publication in this journal is cited, in accordance with accepted academic practice. No use, distribution or reproduction is permitted which does not comply with these terms.