



# Simple Rules for an Efficient Use of Geographic Information Systems in Molecular Ecology

Kevin Leempoel<sup>1\*</sup>, Solange Duruz<sup>1</sup>, Estelle Rochat<sup>1</sup>, Ivo Widmer<sup>1</sup>,  
Pablo Orozco-terWengel<sup>2</sup> and Stéphane Joost<sup>1</sup>

<sup>1</sup> Laboratory of Geographic Information Systems (LASIG), School of Architecture, Civil and Environmental Engineering (ENAC), Ecole Polytechnique Fédérale de Lausanne (EPFL), Lausanne, Switzerland, <sup>2</sup> Biomedical Science, Cardiff University, Cardiff, UK

## OPEN ACCESS

### Edited by:

Samuel A. Cushman,  
United States Forest Service Rocky  
Mountain Research Station, USA

### Reviewed by:

Yessica Rico,  
Institute of Ecology, Mexico  
Rodolfo Jaffé,  
Vale Institute of Technology, Brazil

### \*Correspondence:

Kevin Leempoel  
k.leempoel@gmail.com

### Specialty section:

This article was submitted to  
Evolutionary and Population Genetics,  
a section of the journal  
Frontiers in Ecology and Evolution

**Received:** 11 October 2016

**Accepted:** 31 March 2017

**Published:** 28 April 2017

### Citation:

Leempoel K, Duruz S, Rochat E,  
Widmer I, Orozco-terWengel P and  
Joost S (2017) Simple Rules for an  
Efficient Use of Geographic  
Information Systems in Molecular  
Ecology. *Front. Ecol. Evol.* 5:33.  
doi: 10.3389/fevo.2017.00033

Geographic Information Systems (GIS) are becoming increasingly popular in the context of molecular ecology and conservation biology thanks to their display options efficiency, flexibility and management of geodata. Indeed, spatial data for wildlife and livestock species is becoming a trend with many researchers publishing genomic data that is specifically suitable for landscape studies. GIS uniquely reveal the possibility to overlay genetic information with environmental data and, as such, allow us to locate and analyze genetic boundaries of various plant and animal species or to study gene-environment associations (GEA). This means that, using GIS, we can potentially identify the genetic bases of species adaptation to particular geographic conditions or to climate change. However, many biologists are not familiar with the use of GIS and underlying concepts and thus experience difficulties in finding relevant information and instructions on how to use them. In this paper, we illustrate the power of free and open source GIS approaches and provide essential information for their successful application in molecular ecology. First, we introduce key concepts related to GIS that are too often overlooked in the literature, for example coordinate systems, GPS accuracy and scale. We then provide an overview of the most employed open-source GIS-related software, file formats and refer to major environmental databases. We also reconsider sampling strategies as high costs of Next Generation Sequencing (NGS) data currently diminish the number of samples that can be sequenced per location. Thereafter, we detail methods of data exploration and spatial statistics suited for the analysis of large genetic datasets. Finally, we provide suggestions to properly edit maps and to make them as comprehensive as possible, either manually or through programming languages.

**Keywords:** Geographic Information Systems, spatial analysis, landscape genetics, gene-environment associations, open-source software, geographic map

## INTRODUCTION

Geographic Information Systems (GIS) are powerful tools to be used in the context of evolutionary studies. They are designed to store, handle, display, and analyze any kind of data representing objects (individuals, populations, areas, etc.) characterized by geographic coordinates (X = longitude and Y = latitude). With the help of GIS, geographic information can be combined with for example phenotype, genotype, or environmental data to display the spatial

distribution of genetic variants and to visualize factors influencing spatial evolutionary processes. The main advantage of GIS in evolutionary biology is to easily explore and display genetic information (neutral and adaptive genetic variation, gene flow) at multiple scales, and to overlay this information with physical barriers, land cover or topographic maps in order to generate subsequent analyses regarding the location and causes of genetic boundaries (Epperson, 2003; Manel and Holderegger, 2013). GIS have also proven useful in adaptive landscape genomics or gene-environment associations (GEA) studies, in the context of which they enable the retrieval of environmental variables at sampling locations. The integration of GIS with approaches from landscape ecology and population genetics, defined as landscape genetics by Manel et al. (2003), also has important implications for conservation biology (Petren, 2013).

However, we faced a paradigm change a few years ago with the advent of Next Generation Sequencing (NGS) data, whose use requires rethinking study pipelines. First, NGS currently presents an economic constraint as it is costly compared with genetic markers produced so far (e.g., microsatellites and AFLP). Consequently, we are unable to fully sequence several hundreds of individuals, requiring a careful selection of the samples to analyze. Appropriate sampling is thus key to achieve a precise and continuous evaluation of environment-driven selection on the genome (see **Box 1**; Manel et al., 2012; Hand et al., 2015; Rellstab et al., 2015). In addition, NGS datasets are large and must be treated differently to be efficient and to avoid computer memory overload. Finally, NGS data require new tools to display and analyze spatial patterns that are more computationally demanding.

The successful application of GIS tools is not intuitive for many biologists who are not familiar with the concepts relating GIS and the use of GIS software. Indeed, a large diversity of GIS tools is available and the difficulty of finding relevant information and instructions is an obstacle for non-expert users. To date, few scientific articles have defined the role of GIS in molecular ecology. For instance, Kozak et al. (2008) review the fast development of GIS-based environmental data and advocate for their usage as an alternative to unprecise proxies such as latitude of distance between populations. Another review by Joost et al. (2010) provided guidelines for GIS use in livestock genetics and enumerate the advantages of integrating data in a GIS environment. More recently, Rogers and Staub (2013) outlined spatial analyses and GIS methods in honey bees research. Their review is not specific to bees but instead aim to intensify the exploration of the spatial component of studies in ecology and related disciplines. Lastly, Balkenhol et al. (2015) published a book detailing the concepts and analytical steps of landscape genetics studies, such as sampling design, spatial analysis and environmental datasets. Also, GIS are exploited in many unrelated domains and it is thus difficult to find resources specifically targeted at biologists. The bases of GIS practices are readily found in freely available Massive Open Online Courses (MOOCs), such as the Coursera platform (Coursera, 2012) currently offering six courses on GIS. Yet, these reviews do not tackle the challenges brought by large genetic and environmental datasets, and fail to review the recurrent caveats related to spatial

research. In this paper, we highlight the usefulness of GIS in population and landscape genomics and provide key information for their successful application to these fields.

## GEOGRAPHIC COORDINATES

Geographic coordinates of samples constitute an invaluable source of information, ranging from the display of their spatial distribution to the retrieval of environmental variables. Whenever doing fieldwork, using a GPS is the best way to record the coordinates of samples. As such, we strongly recommend recording the location of each sample, instead of the location of the centroid of a population for instance. Firstly, it allows for a more precise retrieval of environmental values. Secondly, attributing the same location to several samples invokes pseudo-replication, a statistical bias that must be addressed in further analysis. Thirdly, coordinates of nearby individuals allow for a proper measurement of dispersal, using for example pairwise genetic relationship with distance. Regarding GPS devices, standard GPS, and to a lesser extent smartphones, are accurate enough in most cases. However, more precise devices, such as DGPS (differential GPS), are recommended for local scale studies in which samples are located less than a couple of meters apart: the precision of the location has to stay within the spatial resolution of the grain.

When GPS coordinates are not recorded, it is still possible to approximate sample locations with the help of satellite images or by encoding the address of the location (georeferencing or geocoding), although with a lower accuracy. In the former case, creating a new vector layer overlaid on a satellite image or an online map (see next Section) allows the recovering of samples coordinates from an approximately known location (e.g., a crossroad, a tree, a river; Docs.QGIS, 2014). For the latter case, plugins have been developed to read text delimited file containing addresses (e.g., your own house address) that you want to locate (for example the MMQGIS plugin in QGIS, Mangomap, 2012; MMQGIS Plugin, 2012). It must be noted that each line must contain the address, city, state and country.

Another essential consideration is choosing the relevant coordinate reference system. Indeed, GPS devices display the coordinates of a point in latitude and longitude values, usually in the World Geodetic System (WGS84). This is a global reference system in which the Earth is represented by an ellipsoid, and every position on the surface is defined by two angles at the center of the Earth: the latitude and longitude. However, projected systems for which a geographical location is converted from the ellipsoid (distances expressed in degrees) to a corresponding location on a two-dimensional surface (x and y expressed in meters) are preferred for analyses. It is important to note that, although global systems covering the whole planet exist, each country or region has its own coordinate system that is locally more accurate than the global system. Where no national projected system exists, it is still possible to use the Universal Transverse Mercator (UTM) coordinate system, a projected coordinate system covering the entire globe and dividing it into sixty 6°-wide longitudinal zones (Dmap, 1993). Even though

GIS software usually deal with different projection systems, the manual reprojection of all layers into the same local projection system is recommended to avoid potential incompatibilities (see next section). However, different GIS may not exactly use the same name for a coordinate system. Therefore, to facilitate the identification of coordinate systems across the diversity of GIS software, the EPSG (European Petroleum Survey Group) database (EPSG, 1985) is a widely used database referencing all projected coordinate systems, implemented in every GIS and providing them with a unique ID (Maling, 1992), e.g., EPSG: 4326 correspond to the WGS84 reference system.

## SOFTWARE

There are many GIS software, with different functions and aimed at various audiences. Universal GIS software do not exist and, therefore, the choice is difficult for a beginner. Today, one of the most user-friendly GIS is QGIS (QGIS Development Team, 2015). It is ideal to explore geodata, able to read and convert a wide variety of input formats and suitable to produce high-quality maps. Note that QGIS, and all other GIS mentioned in this paper, is free and open source. Open source GIS can indeed perform the same tasks as their commercial counterparts, and include the opportunity to understand and improve GIS algorithms or enable a better collaboration as there is no problem related to license access (Ertz et al., 2014). In addition, a large community exists to support development efforts of open source GIS, and regularly creates extensions to add functions and improvements to the software. Forums and tutorial websites are also flourishing for newcomers (<http://gis.stackexchange.com/>, <http://www.qgistutorials.com/>, Sutton et al., 2009).

On the other hand, most analysis in GIS are not easily replicable and, therefore, programming languages such as R can be more efficient. R has been successfully used as a GIS for a long time and several packages and reviews have been published (Rodriguez-Sanchez, 2013; Brunson and Comber, 2015). Among them, we can mention *rgdal* for the importation of geodata (Bivand et al., 2016), *GISTools* for general GIS operations (Brunson and Chen, 2014), *rasters* for their display (Hijmans and van Etten, 2015), *spdep*, and *spatstat* for spatial statistics and analysis (Baddeley and Turner, 2005; Bivand and Piras, 2015). While these packages are relatively efficient to import, display large rasters and vectors, customization options are more limited than in dedicated GIS.

## MAIN DATASET

The first step in a GIS project is usually to import a vector file containing samples coordinates. QGIS has a plugin to easily import GPS coordinates, either directly from a GPS device or through vector files, such as .kml or .gpx (Docs.QGIS, 2013). These formats are usually converted to shapefiles (.shp) due to the easier management of their attributes and projection system associated with vector units. Delimited text files (e.g., tabulator—tab—or space delimited) can be easily opened in QGIS as well and then be transformed into shapefiles. When opening a text

file using “Add delimited text layer,” QGIS should recognize automatically the delimiter used and the columns of coordinates (X Y, Latitude Longitude) (QGISutorials, 2014). However, such delimited text files cannot be transformed to polygons or lines. In this case, one should already have a shapefile incorporating lines or polygons to which the text table can be joined. To do so, the shapefile and the text table should have the same column of unique IDs. When clicking on the properties of the shapefile, an option is proposed to join additional tables of attributes (QGIStutorial, 2014). As mentioned in the previous section, it is recommended to project all layers in the same coordinate system. In QGIS, this is done by right-clicking on the layer and by changing the coordinate system in the “save as” option. The newly projected layer will then be automatically loaded to the project. See Rogers and Staub (2013) for a more extensive review of the basic tasks in QGIS.

## BACKGROUND DATASET

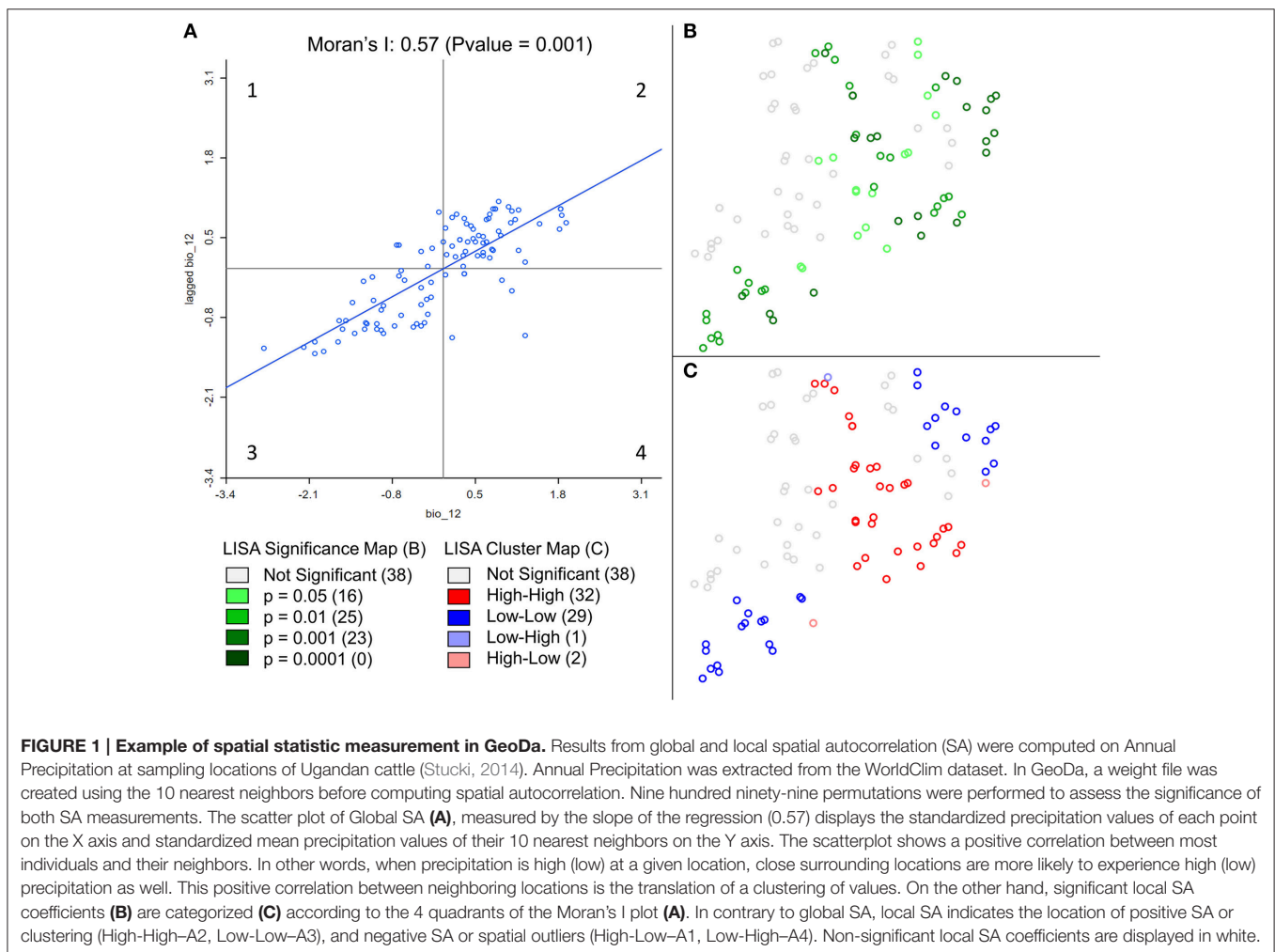
The second step is to add one or more background layer(s) to constitute the geographic context, either from raster data (see next section) or from an online map (Google, Bing, Open Street Map). The OpenLayer plugin in QGIS allows the addition of a background base-map to the QGIS interface (QGIS workshop, 2013). When using raster layers such as Elevation data or climatic variables, adding a semi-transparent shaded relief will enhance the contrast and reveal the topography. To this end, QGIS has a Terrain analysis module in which a hill-shade layer can be computed from a Digital Elevation Model (DEM, i.e., a matrix of elevation data). Then, the transparency of the layer can be adjusted in its properties. In addition, it is advisable to cut rasters and vectors to the size of the study area using the clipper tool to facilitate their display and reduce computation time. Note that the succession of layers in the main frame depends on the order of layers shown on the left panel of the application.

## ENVIRONMENTAL AND LANDSCAPE VARIABLES

Environmental datasets have considerably evolved and represent new opportunities for the identification of environmental drivers of adaptation. One of the main applications of GIS software in landscape genomics is to extract values of environmental variables at the exact location where samples have been collected, or from the surrounding area by means of polygons representing a buffer, a forest, or a specific land cover class for instance. As databases containing georeferenced environmental variables are numerous, we propose a list of the 10 most important publicly accessible databases in **Table 1** (A more extensive list is proposed in Appendix 1, Supplementary Material). Raster environmental data are often delivered in geotiff (.tif) or Band Interleaved by Line (.bil) formats, similar to satellite images but containing only one layer of information (i.e., Temperature, Precipitation etc.). Regarding climate datasets, many studies rely on variables interpolated at large geographical scales on the basis of data provided by weather stations and distributed across territories,

**TABLE 1 | Ten main public sources of environmental data (URLs: consulted on June 10, 2016).**

Name	URL	Format	Observation
USGS Earth Explorer	http://earthexplorer.usgs.gov/	Raster	Remote sensing data (Aerial images, DEMs, infrared images)
WorldClim	http://www.worldclim.org/	Raster	Climate data (past, current and future)
Diva GIS	http://www.diva-gis.org/Data	Raster, Vector	Global climate data, biodiversity and crop collection data
Sentinel Satellite Data	https://scihub.copernicus.eu/dhus	Raster	10-m resolution satellite data Sentinel 2 data with 11 spectral bands, Synthetic aperture radar
Open Street Map	https://www.openstreetmap.org	Vector	Crowd sourced vector data. (Road network, land use, buildings etc.)
Global Biodiversity Information Facility	http://www.gbif.org/	Vector	Information on biodiversity of 1.6 million species, collected over three centuries
Map of Life	http://mol.org/	Vector	Species range map
UNEP	http://geodata.grid.unep.ch/	Vector	Data on environment, climate, emissions
FAO	http://www.fao.org/geonetwork/srv/en/main.home	Vector	Database containing inter-disciplinary information about biodiversity
Worldwide Global Forest Change	https://earthenginepartners.appspot.com/science-2013-global-forest	Raster	Time-series analysis of Landsat images characterizing forest extent and change



such as the WorldClim dataset (Hijmans et al., 2005). These data are often delivered as continuous grids and their spatial resolution (i.e., area covered by a pixel) typically varies between 1 and 10 km<sup>2</sup>. For more local or regional databases, however, national agencies are the most valuable sources (Box 1).

Alternatively or additionally, environmental variables can be computed from DEMs, and used as proxies to relevant ecological features (Kozak et al., 2008; Manel et al., 2010; Leempoel et al., 2015). DEMs are available on Earth Explorer (Earth Explorer, 2016) and come in formats such as geotiff or SAGA Grids

**BOX 1 | Sampling design and scale.**

Sampling design must be carefully chosen depending on the ecological scale of study, i.e., the spatial resolution and the extent of the area under study, and economic constraints. One important way of evaluating sampling strategies is to design them in a GIS environment to guarantee spatial randomness, representativeness or a constrained stratification of the sampling along environmental gradients among others.

Various optimized sampling strategies have been proposed and reviewed in the literature (Schwartz et al., 2009; Manel et al., 2012; Balkenhol et al., 2015; Rellstab et al., 2015). However, and regardless of the design chosen, one must consider sampling density and decide how many individuals will be sampled and then sequenced per location (or population). Indeed, the recent availability of NGS data implies to consider sub-sampling strategies for economic reasons. For example, a sub-sampling procedure using a hierarchical clustering can be applied in order to ensure a regular cover of both environmental and physical spaces (Stucki, 2014). For the former, stratified sampling techniques should be used over a range of climatic variables, previously filtered using a PCA. For the latter, a clustering index is minimized to ensure spatial spread. To ensure the representativeness of the entire area, the sampling can also be achieved using grid cells (see **Figure 2**). On the other hand, it is important to understand that landscape and population genomic sampling designs are difficult to reconcile (Joost et al., 2013). Indeed, sampling a small number of populations does not necessarily allow estimating changes in frequency along an environmental gradient. Conversely, sampling regularly along an environmental gradient may turn the assignment of individuals to populations more difficult. However, as pointed out by De Mita et al. (2013), for population genetics studies it is preferable to sample a high number of populations with few samples rather than a small number of populations with many samples. In addition, it is better to concentrate the sampling in a smaller area in order to obtain a greater density and higher statistical power (Joost et al., 2010).

Defining a scale of study also raises important questions regarding the relevance of environmental variables used. Indeed, when integrating different datasets (e.g., environmental, topographic, genetic), one must be aware that the spatial resolution of the raster data has to match the sampling density, and this is often not the case. Recently developed satellite imagery or DEMs show a fine resolution and a high accuracy, but the advantage of using high resolution data compared to data at coarser resolution remains under-studied (Levin, 1992; Marceau and Hay, 1999; Wilson and Gallant, 2000; Cavazzi et al., 2013). For example, while intuitively a fine resolution may be ideal, it may hold an excess of details and generate too much noise. Contrastingly, a too coarse resolution only shows generalized properties of the landscape and can have little explanatory power (Cavazzi et al., 2013). On the other hand, when the spatial resolution of the variable is too coarse, nearby samples will retrieve their environmental values from the same pixels (i.e., pseudo-replicates), thus inflating autocorrelation. One solution to this problem is to compute variables at multiple resolutions (Pradervand et al., 2014; Leempoel et al., 2015).

(.sgrd). We recommend not using text formats for grids (such as .asc or .xyz) since DEMs resolution has dramatically increased over the years, making these formats slow and heavy. The most common use of DEMs in ecology consists in retrieving altitude or computing primary terrain attributes (i.e., slope, orientation and curvature; Guisan and Zimmermann, 2000; Wilson and Gallant, 2000; Kozak et al., 2008; Manel et al., 2010). However, we recommend going beyond the traditional use of DEMs as a diversity of variables can be computed, like e.g., solar radiation, morphometric indices or hydrological variables (Leempoel et al., 2015). The treatment of DEMs and the production of topographic variables can be processed in software like SAGA GIS (SAGA GIS, 2004; Conrad et al., 2015) or GRASS GIS, now included in QGIS. SAGA GIS is the most DEM-oriented GIS to date and can compute a large panel of derived variables. It is also easily scriptable both using the command line or the R package RSAGA (Brenning, 2008), although the former is faster.

Satellite images covering the whole surface of the globe are also available through Earth Explorer and can be used e.g., to produce land cover maps. Most satellite sensors provide images with more than the 3 visible “colors,” or bands, and it is thus the choice of the user to decide which bands to attribute to color channels (Red, Green and Blue). For example, by assigning the infrared band to the red channel and green and blue bands to their respective channels, one can easily identify trees or forests against water, fields or naked soils because plants reflect infrared wavelengths more than other land cover types. This process, the supervised classification of remote sensing data (satellite and aerial images, radar, etc.), can be operated in Opticks (Opticks, 2001) or in SAGA GIS.

Finally, vector databases, such as Openstreetmap (OSM) (OpenStreetMap, 2004), are precious to recover road networks, rivers, watershed boundaries, or landuse. OSM data can also

be easily accessed through GeoFabrik (GeoFabrik, 2011) where cities or countries are already extracted. Note however that OSM data and most tiled web-maps are provided in Pseudo-Mercator projection (EPSG: 3857).

It is worth mentioning that in GEA studies, using a wide range of environmental variables often implies redundancy between these variables. However, statistical analyses require independent variables and, for this reason, it is important to perform multicollinearity analysis (e.g.,) on the set of environmental variables, to understand which variables are highly correlated (Dobson and Barnett, 2008; Fischer et al., 2013). Such collinearity can be detected by performing a PCA, by using Variance Inflation Factor (VIF) or calculating pairwise correlation coefficients between pairs of variables, and then removing randomly one of the two variables from a pair that shows high correlation. See Rellstab et al. (2015) for a review of these methods. However, bear in mind that environmental variables, in particular DEM-derived ones, may not have a normal distribution. Variables should thus be transformed or non-parametric tests should be used to test for correlations (for example Spearman ranks instead of Pearson correlation coefficients).

## SPATIAL ANALYSIS

Numerous spatial analysis techniques have been developed to address issues related to spatial data (Fortin and Dale, 2005). Here, we focus on exploratory spatial data analysis (ESDA) and spatial statistics given their central role in molecular ecology. For other spatial analysis methods, we suggest to have a look at the Geospatial analysis guide (Smith et al., 2005) and at the spatial analysis guide for ecologists (Fortin and Dale, 2005).

Evolutionary biology can benefit from ESDA (Joost, 2006), an interactive approach allowing the user to explore and analyze a dataset dynamically and in real-time through a combination

of various tools for data representation (Anselin, 1994). For example, maps can be used to display the position of samples, histograms and boxplots to evaluate the distribution of attribute values and Moran's scatter plot or conditional plots to analyze the relationship between the various variables. ESDA can also be useful for example to localize samples in areas showing extreme climatic conditions (outliers), to highlight regions where samples are highly correlated (clusters), or pinpoint populations with a low genetic diversity. A powerful ESDA tool is the open-source software GeoDa (GeoDa, 2005) that allows the exploration and spatial analysis of vector data (Anselin et al., 2006). GeoDa notably offers the possibility to create various maps (quantile, equal intervals, etc.) and to simultaneously analyze attributes with the help of other graphs.

Spatial autocorrelation (i.e., the degree of dependence among observations in a geographic space; SA) is often overlooked in ecological and evolutionary studies despite the fact that many environmental or biological characteristics show spatial dependence among observations, due to intrinsic process of dispersal and mating (Anselin, 1998; Hall and Beissinger, 2014). It is measured by comparing individual values of a defined variable with the mean of that variable in a defined neighborhood. By doing so for each sample, SA measures the degree of values similarities with location similarity. It is thus essential to measure SA in studies involving spatial data, not only because it is a natural phenomenon but also because it violates the assumption of independence required by standard statistical tests, such as student tests or regressions (Legendre, 1993; Wagner and Fortin, 2005). For example, Moran's I, a classic spatial autocorrelation statistic, can be used to estimate the scale/distance of gene flow in the landscape (Hall and Beissinger, 2014). In addition, Local Indicators of Spatial Association (LISA; Anselin, 1995) allows to identify and localize spatial autocorrelation patterns and study the spatial relationship between genetic markers and environmental features (Colli et al., 2014; Stucki, 2014). See **Figure 1** for an example. While GeoDa is better to visualize the SA of one variable, it cannot be automated to calculate it for many. For a fast computation of both global and local SA on genetic data, Sambada is handfull (Stucki et al., 2016). It can be easily programmed to compute SA on millions of genetic markers and so with different neighborhood sizes and weighting schemes. The decrease of SA with distance can thus be measured using different lags and comparisons can be made between neutral and selected loci. The R package *spdep* can perform similar analyses (Bivand and Piras, 2015).

## SPATIAL DATA REPRESENTATION

Maps illustrating the results of an analysis are often more powerful than tables to transmit a result or an idea. However, the creation of efficient maps requires a reflection phase about the graphical representation of the results. Indeed, maps can be too complex to read when too detailed or may be uninformative when too simple. Creating a map first requires choosing an appropriate display type. Traditional choropleth map, in which the entities are colored according to a scale based on the value of the attribute of interest, can be used in many situations. For example, to represent the membership coefficient

of individuals to two populations distributed over a landscape (e.g., as frequently done for population genetic analyses of admixture), one can use a gradient passing through a neutral hue to contrast the two parts of the distribution (i.e., the membership of each individual to one or the other population) (**Figure 2**). Although most GIS provide colored gradients, it can be useful to understand how to obtain an appropriate color scheme using Color Brewer (Color Brewer 2, 2001). Alternatively, if individuals are grouped into more than two populations, bar charts can be more appropriate. Proportional circles can also be used, for example to indicate absolute numbers of individuals sampled in each population.

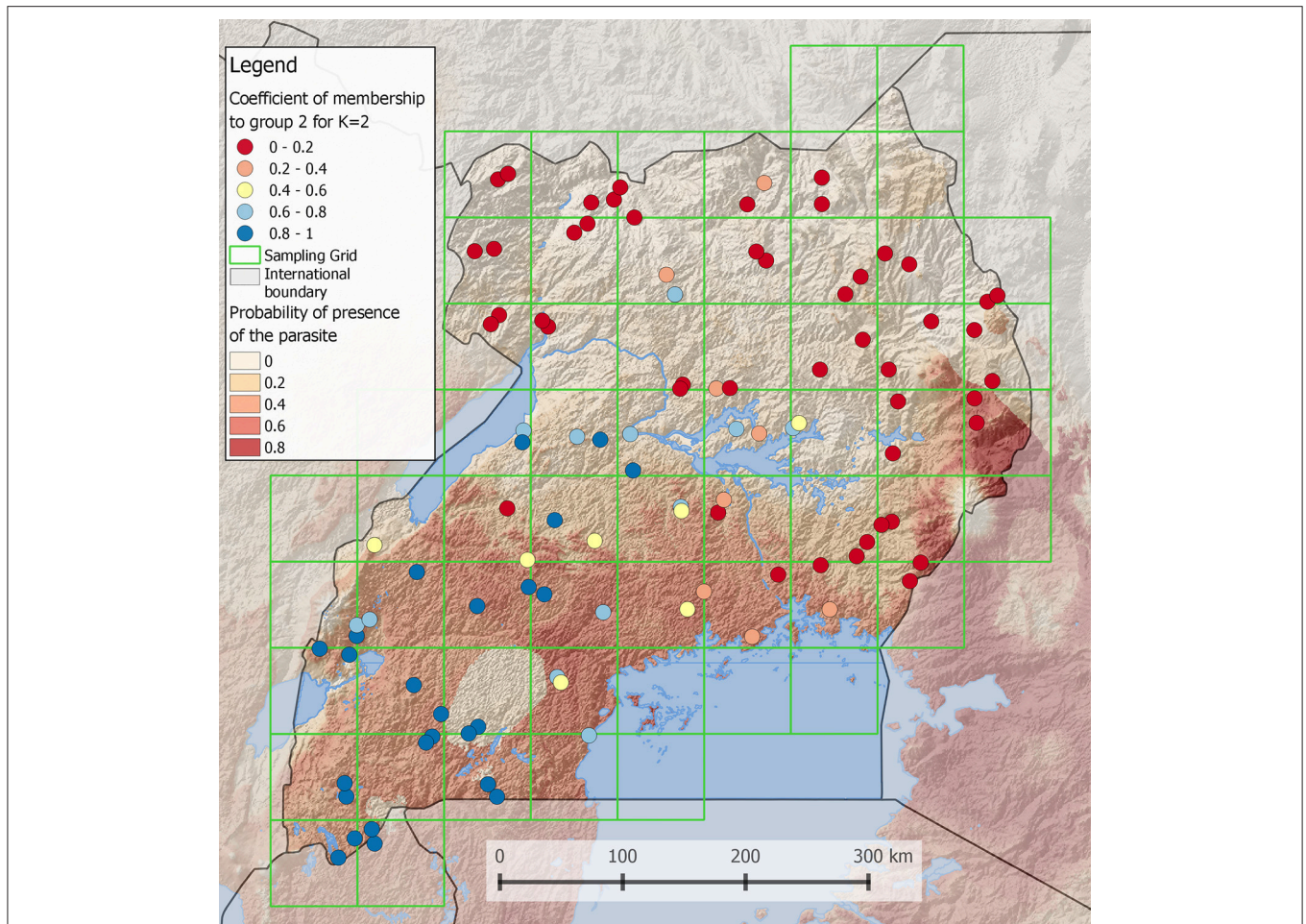
Background layers can then be added to provide more information on the geographic context, such as an aerial image or a DEM to situate the samples. This can potentially be combined with contour lines to compare the elevation from one location to another. One can also highlight the study area by darkening or de-saturating the rest of the map. Regarding points representing individuals or populations, simple shapes should be preferred. Labels should be readable and discarded if not.

Each map must then be edited before being published. Some elements must go along with a map: a legend (to identify the geographical units, or the different statistical classes used) and a scale. In the legend, the message should be simplified by regrouping categories, reducing the number of decimal places and removing unnecessary layers. Furthermore, a frame in a corner of the map, representing the region at a broader geographic scale (zoom out), is useful to situate the study area. Maps should be exported preferentially in .pdf format to keep the vector properties for potential future editions. We provide an example in **Figure 2**.

Lastly, GIS software are not particularly easy to use when it comes to producing maps iteratively. For example, creating maps of genetic markers under selection used to be feasible manually when the number of genetic markers tested was small. On the contrary, most GEA studies today use hundreds to millions of markers deriving from genomic analyses, and with many of them showing signatures of selection. In such cases, manually producing maps is neither smart nor informative. Computing software such as R should thus be favored with packages such as *Rgdal* and *Rasters* being very useful and sufficient to import genetic and geodata and to produce basic maps (Hijmans and van Etten, 2015; Bivand et al., 2016).

## PERSPECTIVE

GIS are powerful tools for molecular ecologists but remain too often underexploited and misused, mainly because of the multitude of GIS software and databases available. We have presented in this paper useful guidelines making it possible for any GIS beginner to appropriate basic functions, to find specific learning resources for biologists, and we proposed a brief state of the art for the use of GIS in biology. However, it is intriguing that, in the big data era, geodatabases are not more frequently used to store and access genetic datasets. They would also speed up queries and reduce disk usage. There are in fact few examples of transformation of NGS data in spatial



**FIGURE 2 | Coefficient of membership to a genetic group of Ugandan Cattles (Stucki, 2014).** Using the software admixture (Alexander et al., 2009), the most likely number of populations was found to be 2. In this case, it is possible to display the membership coefficient of each individual to one of the two populations. To do so, a gradient obtained from <http://colorbrewer2.org> is passing through a neutral hue to contrast the two populations. The order of layers in the legend is the same as in the map. In the background, a grid layer of probability of presence of a parasite is shown. A semi-transparent shaded relief is also displayed to reveal the topography. Lakes and international boundaries are overlaid on these raster layers. Ugandan boundaries are highlighted by darkening surrounding countries.

databases because of the high technicality of such task (Holl and Plum, 2009; Joost and Kalbermatten, 2010; Paila et al., 2013; Nandal et al., 2016; Piry et al., 2016). So far, the most compelling tool is the recently developed open source system TheSNPit (Groeneveld and Lichtenberg, 2016). It allows for an integration of large genetic datasets in a PostgreSQL environment, which is also the backend of most GIS databases. Interestingly, this tool was mainly developed for breeding programs that already deal with thousands of individuals and millions of SNPs. A game changer that will most likely hit molecular biology in the future.

## REFERENCES

Alexander, D. H., Novembre, J., and Lange, K. (2009). Fast model-based estimation of ancestry in unrelated individuals. *Genome Res.* 19, 1655–1664. doi: 10.1101/gr.094052.109

## AUTHOR CONTRIBUTIONS

KL: structured and wrote the paper. SD and ER: wrote two paragraphs and reviewed the paper. IW: reviewed the paper. PO: reviewed the paper. SJ: supervised and reviewed the paper.

## SUPPLEMENTARY MATERIAL

The Supplementary Material for this article can be found online at: <http://journal.frontiersin.org/article/10.3389/fevo.2017.00033/full#supplementary-material>

Anselin, L. (1994). Exploratory spatial data analysis and geographic information systems. *New Tools Spat. Anal.* 17, 45–54. doi: 10.1088/0957-4484/17/5/014

Anselin, L. (1995). Local indicators of spatial association — LISA. *Geogr. Anal.* 27, 93–115. doi: 10.1111/j.1538-4632.1995.tb00338.x

- Anselin, L. (1998). "Exploratory spatial data analysis in a geocomputational environment," in *Geocomputation: A Primer*, eds P. A. Longley, S. M. Brooks, R. McDonnell, and W. Macmillan (New York, NY: Wiley and Sons), 77–94.
- Anselin, L., Syabri, I., and Kho, Y. (2006). GeoDa: an introduction to spatial data analysis. *Geogr. Anal.* 38, 5–22. doi: 10.1111/j.0016-7363.2005.00671.x
- Baddeley, A., and Turner, R. (2005). spatstat: an R package for analyzing spatial point patterns. *J. Stat. Softw.* 12, 1–42. doi: 10.1.1.126.8464
- Balkenhol, N., Cushman, S. A., Storfer, A., and Waits, L. P. (2015). *Landscape Genetics: Concepts, Methods, Applications*.
- Bivand, R., Keitt, T., and Rowlingson, B. (2016). *Package "rgdal."* R Package.
- Bivand, R., and Piras, G. (2015). Comparing implementations of estimation methods for spatial econometrics. *J. Stat. Softw.* 63, 1–36. doi: 10.18637/jss.v063.i18
- Brenning, A. (2008). Statistical Geocomputing combining R and SAGA: the example of landslide susceptibility analysis with generalized additive models. *SAGA Second. Out* 19, 23–32.
- Brunsdon, C., and Chen, H. (2014). *GISTools: Some Further GIS Capabilities for R*. Available online at: <https://cran.r-project.org/package=GISTools>
- Brunsdon, C., and Comber, L. (2015). *An Introduction to R for Spatial Analysis and Mapping*. SAGE Publications Available online at: <https://books.google.com/books?id=zsF-AwAAQBAJ>
- Cavazzi, S., Corstanje, R., Mayr, T., Hannam, J., and Fealy, R. (2013). Are fine resolution digital elevation models always the best choice in digital soil mapping? *Geoderma* 195–196, 111–121. doi: 10.1016/j.geoderma.2012.11.020
- Colli, L., Joost, S., Negrini, R., Nicoloso, L., Crepaldi, P., and Ajmone-Marsan, P. (2014). Assessing the spatial dependence of adaptive loci in 43 European and Western Asian goat breeds using AFLP markers. *PLoS ONE* 9:e86668. doi: 10.1371/journal.pone.0086668
- Color Brewer, 2 (2001). Available online at: <http://colorbrewer2.org/> (Accessed: October 5, 2016).
- Conrad, O., Bechtel, B., Bock, M., Dietrich, H., Fischer, E., Gerlitz, L., et al. (2015). System for Automated Geoscientific Analyses (SAGA) v. 2.1.4. *Geosci. Model Dev.* 8, 1991–2007. doi: 10.5194/gmd-8-1991-2015
- Coursera (2012). Available online at: <https://www.coursera.org> (Accessed: October 5, 2016).
- De Mita, S., Thuillet, A.-C., Gay, L., Ahmadi, N., Manel, S., Ronfort, J., et al. (2013). Detecting selection along environmental gradients: analysis of eight methods and their effectiveness for outbreeding and selfing populations. *Mol. Ecol.* 22, 1383–1399. doi: 10.1111/mec.12182
- Dmap (1993). *UTM Grid Zones of the World*. Available online at: <http://www.dmap.co.uk/utmworld.htm> (Accessed on: October 5, 2016).
- Dobson, A. J., and Barnett, A. (2008). *An Introduction to Generalized Linear Models, 3rd Edn*. Taylor & Francis. Available online at: <http://books.google.ch/books?id=KodvPwAACAAJ>
- Docs.QGIS (2013). *GPS Plugin*. Available online at: [http://docs.qgis.org/2.8/en/docs/user\\_manual/working\\_with\\_gps/plugins\\_gps.html](http://docs.qgis.org/2.8/en/docs/user_manual/working_with_gps/plugins_gps.html) (Accessed: October 5, 2016).
- Docs.QGIS (2014). *Create New Vector in QGIS*. Available online at: [https://docs.qgis.org/2.2/en/docs/training\\_manual/create\\_vector\\_data/create\\_new\\_vector.html](https://docs.qgis.org/2.2/en/docs/training_manual/create_vector_data/create_new_vector.html) (Accessed: October 5, 2016).
- Earth Explorer (2016). Available online at: [earthexplorer.usgs.gov/](http://earthexplorer.usgs.gov/) (Accessed: October 5, 2016).
- Epperson, B. (2003). *Geographical Genetics*. Available online at: <http://press.princeton.edu/titles/7689.html>
- EPSG (1985). Available online at: <http://www.epsg.org/> (Accessed: October 5, 2016).
- Ertz, O., Rey, S. J., and Joost, S. (2014). The open source dynamics in geospatial research and education. *J. Spat. Inf. Sci.* 8, 67–71. doi: 10.5311/josis.2014.8.182
- Fischer, M. C., Rellstab, C., Tedder, A., Zoller, S., Gugerli, F., Shimizu, K. K., et al. (2013). Population genomic footprints of selection and associations with climate in natural populations of *Arabidopsis halleri* from the Alps. *Mol. Ecol.* 22, 5594–5607. doi: 10.1111/mec.12521
- Fortin, M. J., and Dale, M. R. T. (2005). *Spatial Analysis: A Guide for Ecologists*. Cambridge: Cambridge University Press.
- GeoDa (2005). Available online at: <http://geodacenter.github.io/> (Accessed October 5, 2016).
- GeoFabrik (2011). Available online at: <http://www.geofabrik.de> (Accessed on: October 5, 2016).
- Groeneveld, E., and Lichtenberg, H. (2016). TheSNPpit—a high performance database system for managing large scale SNP data. *PLoS ONE* 11:e0164043. doi: 10.1371/journal.pone.0164043
- Guisan, A., and Zimmermann, N. E. (2000). Predictive habitat distribution models in ecology. *Ecol. Modell.* 135, 147–186. doi: 10.1016/S0304-3800(00)00354-9
- Hall, L., and Beissinger, S. (2014). A practical toolbox for design and analysis of landscape genetics studies. *Landsc. Ecol.* 29, 1487–1504. doi: 10.1007/s10980-014-0082-3
- Hand, B. K., Lowe, W. H., Kovach, R. P., Muhlfeld, C. C., and Luikart, G. (2015). Landscape community genomics: understanding eco-evolutionary processes in complex environments. *Trends Ecol. Evol.* 30, 161–168. doi: 10.1016/j.tree.2015.01.005
- Hijmans, R. J., Cameron, S. E., Parra, J. L., Jones, P. G., and Jarvis, A. (2005). Very high resolution interpolated climate surfaces for global land areas. *Int. J. Climatol.* 25, 1965–1978. doi: 10.1002/joc.1276
- Hijmans, R. J., and van Etten, J. (2015). *raster: Geographic Analysis and Modeling with Raster Data*. R Package Version 2.5-2. Available online at: <http://CRAN.R-project.org/package=raster>
- Holl, S., and Plum, H. (2009). "PostGIS," in *GeoInformatics 03/2009*, 34–36.
- Joost, S. (2006). *The Geographical Dimension of Genetic Diversity - A GIScience Contribution for the Conservation of Animal Genetic Resources [Internet]*. Thesis, EPFL. doi: 10.5075/epfl-thesis-3454
- Joost, S., Colli, L., Baret, P. V., Garcia, J. F., Boettcher, P. J., Tixier-Boichard, M., et al. (2010). Integrating geo-referenced multiscale and multidisciplinary data for the management of biodiversity in livestock genetic resources. *Anim. Genet.* 41, 47–63. doi: 10.1111/j.1365-2052.2010.02037.x
- Joost, S., and Kalbermatten, M. (2010). "GEOOME: A web-based landscape genomics geocomputation platform," in *Proceedings of the 1st ISPRS International Workshop on Pervasive Web Mapping, Geoprocessing and Services-WebMGS 2010* (Como: International Society for Photogrammetry and Remote Sensing).
- Joost, S., Vuilleumier, S., Jensen, J. D., Schoville, S., Leempoel, K., Stucki, S., et al. (2013). Meeting review. Uncovering the genetic basis of adaptive change: on the intersection of landscape genomics and theoretical population genetics. *Mol. Ecol.* 22, 3659–3665. doi: 10.1111/mec.12352
- Kozak, K. H., Graham, C. H., and Wiens, J. J. (2008). Integrating GIS-based environmental data into evolutionary biology. *Trends Ecol. Evol.* 23, 141–148. doi: 10.1016/j.tree.2008.02.001
- Leempoel, K., Geiser, C., Daprà, L., Vittoz, P., Parisod, C., and Joost, S. (2015). Very high resolution digital elevation models: are multi-scale derived variables ecologically relevant? *Methods Ecol. Evol.* 6, 1373–1383. doi: 10.1111/2041-210x.12427
- Legendre, P. (1993). Spatial autocorrelation: trouble or new paradigm? *Ecology* 74, 1659–1673. doi: 10.2307/1939924
- Levin, S. A. (1992). The problem of pattern and scale in ecology: the Robert H. MacArthur award lecture. *Ecology* 73, 1943–1967.
- Maling, D. H. (1992). *Coordinate Systems and Map Projections, 2nd Edn*. Amsterdam: Pergamon. doi: 10.1016/B978-0-08-037233-4.50003-0
- Manel, S., Albert, C., and Yoccoz, N. (2012). "Sampling in landscape genomics," in *Data Production and Analysis in Population Genomics SE - 1 Methods in Molecular Biology*, eds F. Pompanon and A. Bonin (New York, NY: Humana Press), 3–12.
- Manel, S., and Holderegger, R. (2013). Ten years of landscape genetics. *Trends Ecol. Evol.* 28, 614–621. doi: 10.1016/j.tree.2013.05.012
- Manel, S., Poncet, B. N., Legendre, P., Gugerli, F., and Holderegger, R. (2010). Common factors drive adaptive genetic variation at different spatial scales in *Arabidopsis thaliana*. *Mol. Ecol.* 19, 3824–3835. doi: 10.1111/j.1365-294X.2010.04716.x
- Manel, S., Schwartz, M. K., Luikart, G., and Taberlet, P. (2003). Landscape genetics: combining landscape ecology and population genetics. *Trends Ecol. Evol.* 18, 189–197. doi: 10.1016/s0169-5347(03)00008-9
- Mangomap (2012). *Make a Web Map from a List of Addresses in a Spreadsheet*. Available online at: <http://blog.mangomap.com/post/74368997570/how-to-make-a-web-map-from-a-list-of-addresses-in> (Accessed: October 5, 2016).
- Marceau, D. J., and Hay, G. J. (1999). Remote sensing contributions to the scale issue. *Can. J. Remote Sens.* 25, 357–366.



- MMQGIS Plugin (2012). Available at: <https://plugins.qgis.org/plugins/mmqgis/> (Accessed: October 5, 2016).
- Nandal, U. K., van Kampen, A. H. C., and Moerland, P. D. (2016). compendiumdb: an R package for retrieval and storage of functional genomics data. *Bioinformatics* 32, 2856–2857. doi: 10.1093/bioinformatics/btw335
- OpenStreetMap (2004). Available at: <https://www.openstreetmap.org/> (Accessed: October 5, 2016).
- Opticks (2001). Available at: <https://opticks.org/> (Accessed: October 5, 2016).
- Paila, U., Chapman, B. A., Kirchner, R., and Quinlan, A. R. (2013). GEMINI: integrative exploration of genetic variation and genome annotations. *PLoS Comput. Biol.* 9:e1003153. doi: 10.1371/journal.pcbi.1003153
- Petren, K. (2013). The evolution of landscape genetics. *Evolution* 67, 3383–3385. doi: 10.1111/evo.12278
- Piry, S., Chapuis, M.-P., Gauffre, B., Papaix, J., Cruaud, A., and Berthier, K. (2016). Mapping Averaged Pairwise Information (MAPI): a new exploratory tool to uncover spatial structure. *Methods Ecol. Evol.* 7, 1463–1475. doi: 10.1111/2041-210X.12616
- Pradervand, J.-N., Dubuis, A., Pellissier, L., Guisan, A., and Randin, C. (2014). Very high resolution environmental predictors in species distribution models: moving beyond topography? *Prog. Phys. Geogr.* 38, 79–96. doi: 10.1177/0309133313512667
- QGIS Development Team (2015). *QGIS Geographic Information System*. Open Source Geospatial Foundation Project. Available online at: <http://www.qgis.org/>
- QGISutorial (2014). *Performing Table Joins*. Available online at: [http://www.qgistutorials.com/en/docs/performing\\_table\\_joins.html](http://www.qgistutorials.com/en/docs/performing_table_joins.html) (Accessed: October 5, 2016).
- QGISutorials (2014). *Importing Spreadsheets or CSV files*. Available online at: [http://www.qgistutorials.com/en/docs/importing\\_spreadsheets\\_csv.html](http://www.qgistutorials.com/en/docs/importing_spreadsheets_csv.html) (Accessed: October 5, 2016).
- QGIS workshop (2013). *Adding Basemaps using OpenLayers Plugin*. Available online at: <http://maps.cga.harvard.edu/qgis/wkshop/basemap.php> (Accessed: October 5, 2016).
- Rellstab, C., Gugerli, F., Eckert, A. J., Hancock, A. M., and Holderegger, R. (2015). A practical guide to environmental association analysis in landscape genomics. *Mol. Ecol.* 24, 4348–4370. doi: 10.1111/mec.13322
- Rodriguez-Sanchez, F. (2013). *Spatial Data in R: Using R as a GIS*. Available online at: <https://pakillo.github.io/R-GIS-tutorial/#contents> (Accessed: November 12, 2016).
- Rogers, S. R., and Staub, B. (2013). Standard use of Geographic Information System (GIS) techniques in honey bee research. *J. Apic. Res.* 52, 1–48. doi: 10.3896/IBRA.1.52.4.08
- SAGA GIS (2004). Available at: <http://www.saga-gis.org/en/index.html> (Accessed: October 5, 2016).
- Schwartz, M. K., Luikart, G., McKelvey, K. S., and Cushman, S. A. (2009). “Landscape genomics: a brief perspective,” in *Spatial Complexity, Informatics, and Wildlife Conservation* (Tokyo: Springer), 165–175.
- Smith, M., de Longley, P., and Goodchild, M. (2005). *Geospatial Analysis - A Comprehensive Guide*. Available online at: <http://www.spatialanalysisonline.com/> (Accessed: October 6, 2016).
- Stucki, S. (2014). *Développement d'outils de géo-calcul Haute Performance Pour l'identification de Régions du Génome Potentiellement Soumises à la Sélection Naturelle - Analyse Spatiale de la Diversité de Panels de Polymorphismes Nucléotidiques à Haute Densité (800k) Chez Bos Taurus et B. Indicus en Ouganda*. Thesis, EPFL.
- Stucki, S., Orozco-terWengel, P., Forester, B. R., Duruz, S., Colli, L., Masembe, C., et al. (2016). High performance computation of landscape genomic models including local indicators of spatial association. *Mol. Ecol. Resour.* doi: 10.1111/1755-0998.12629
- Sutton, T., Dassau, O., and Sutton, M. (2009). A gentle introduction to GIS: brought to you with Quantum GIS, a Free and Open Source Software GIS Application for everyone. *T. Chief Dir. Spat. Plan.* doi: 10.1038/sj.bdj.2011.132
- Wagner, H. H., and Fortin, M. J. (2005). Spatial analysis of landscapes: concepts and statistics. *Ecology* 86, 1975–1987. doi: 10.1890/04-0914
- Wilson, J. P., and Gallant, J. C. (2000). *Terrain Analysis: Principles and Applications*. Wiley Wiley. Available online at: <http://www.loc.gov/catdir/bios/wiley047/99089635.html>

**Conflict of Interest Statement:** The authors declare that the research was conducted in the absence of any commercial or financial relationships that could be construed as a potential conflict of interest.

Copyright © 2017 Leempoel, Duruz, Rochat, Widmer, Orozco-terWengel and Joost. This is an open-access article distributed under the terms of the Creative Commons Attribution License (CC BY). The use, distribution or reproduction in other forums is permitted, provided the original author(s) or licensor are credited and that the original publication in this journal is cited, in accordance with accepted academic practice. No use, distribution or reproduction is permitted which does not comply with these terms.

## LIST OF TERMS

**Raster:** Regular grids of pixels that describe continuous phenomena, retaining information such as color (for aerial images), elevation, temperature.

**Vector:** Points, lines or polygons whose nodes are defined by geographical coordinates and describe discrete phenomenon such as borders, rivers, catchment areas. Vectors are usually stored in Shapefiles (.shp and associated files).

**Datum:** The datum defines the 3-dimensional sphere used to approximate the earth. It provides a frame of reference to measure coordinates in both geographic and projected coordinate systems.

**Geographic Coordinate System:** A GCS gives the coordinates (i.e., latitude and longitude) of a point as measured from the angles to the center of a defined sphere and meridian.

**Projected Coordinate system:** A PCS is a projection of the sphere on a flat, two-dimensional surface. Its coordinates (X and Y) are thus consistent and equally spaced.

**DEM:** Digital Elevation Models are grids of elevation data. Each pixel of that grid is spaced at regular horizontal intervals and contains one value of elevation.

**Grain:** The grain is the size of a pixel, the smallest unit on a grid. A small grain corresponds to a high spatial resolution.

**Extent:** The extent is the size of the study area.