



Ecological Potential of Plants for Phytoremediation and Ecorestoration of Fly Ash Deposits and Mine Wastes

Gordana Gajić*, Lola Djurdjević, Olga Kostić, Snežana Jarić, Miroslava Mitrović and Pavle Pavlović

Department of Ecology, Institute for Biological Research "Siniša Stanković", University of Belgrade, Belgrade, Serbia

OPEN ACCESS

Edited by:

Mira Aničić Urošević,
University of Belgrade, Serbia

Reviewed by:

Vimal Chandra Pandey,
Babasaheb Bhimrao Ambedkar
University, India
Jelena Avdalovic,
Institute of Chemistry, Technology and
Metallurgy, University of Belgrade,
Serbia

*Correspondence:

Gordana Gajić
gugol@ibiss.bg.ac.rs;
gocagajic@gmail.com

Specialty section:

This article was submitted to
Environmental Toxicology,
a section of the journal
Frontiers in Environmental Science

Received: 04 June 2018

Accepted: 04 October 2018

Published: 13 November 2018

Citation:

Gajić G, Djurdjević L, Kostić O,
Jarić S, Mitrović M and Pavlović P
(2018) Ecological Potential of Plants
for Phytoremediation and
Ecorestoration of Fly Ash Deposits
and Mine Wastes.
Front. Environ. Sci. 6:124.
doi: 10.3389/fenvs.2018.00124

Fly ash generates as the result of coal combustion in thermoelectric power stations whereas ore mining activities produce mine waste-rock and tailings worldwide. High concentrations of metal(loid)s and organic pollutants in fly ash and mine wastes are released into soil, air, and water presenting a global threat to the surrounding environment and human health. The environmentally sound management of fly ash and mine waste-rock and tailings includes monitoring stability of the dam construction and seepage flowrate, prevention of water erosion and dust spreading, reducing the footprint of the management facilities and successful restoration/revegetation. Harsh conditions prevailing on fly ash and mine deposits are unfavorable mechanical composition and pH, high concentrations of soluble salts, lack of nitrogen and phosphorous, reduced number of microorganisms and fungus, toxic concentrations of As, Au, Ag, B, Cu, Cd, Cr, Hg, Mn, Mo, Ni, Pb, Zn, and the presence of PAHs and PCBs. The review addresses phytostabilization, phytoextraction, rhizodegradation, and phytodegradation as main phytoremediation green technologies which use plants to clean up the contaminated area to safe levels. Establishment of the self-sustaining vegetative cover on fly ash and mine deposits is crucial for recovering ecosystem health, stability, and resilience. Therefore, here we have discussed the essential role of native plants in the ecorestoration process on waste deposits. Additional emphasis is given to the evaluation of plant adaptive response to pollution stress. This review presents a current knowledge in phytomanagement of fly ash deposits, mine waste-rock and tailings. Also, it provides a new frontier in restoration physiology where physiological and biochemical tools can be used to predict plant response to stressors and success of restoration projects.

Keywords: fly ash, mine waste, pollutants, phytoremediation, ecorestoration, native plants, plant physiology, adaptation

INTRODUCTION

Thermal power plants using coal as major fuel for production of electricity worldwide generate large amounts of combustion coal residues (CCRs), such as fly ash, bottom ash, boiler slag and flues gas desulphurization materials (Heidrich et al., 2013). According to Yao et al. (2015) coal consumption in thermal power stations in world electricity supply should increase from 29.9% in 2011 to 46% in 2030. The coal reserves in the world are over 850 Gt with large producing countries: North America (240 Mt), Russian Federation (170 Mt), China (130 Mt), Europe and Eurasia

(130 Mt), Australia (80 Mt), India (70 Mt), Middle East and Africa (40 Mt), Central and South America (30 Mt) and other Asian Pacific countries (10 Mt) (World Coal Association, 2012; Heidrich et al., 2013). The annual production of fly ash reaches approximately 580 million tons in China, 160 million tons in India and 130 million tons in US (Yao et al., 2015). Improper disposal of coal fly ash presents environmental and human health hazards. However, efforts have been made to develop different recycling technologies addressing fly ash utilization. Thus, fly ash can be used as building material, backfills for road constructions and pavement base, for cement and brick manufacturing, filler in asphalt mixture, soil stabilization as cover suitable for soil reclamation, material recovery, manufacturing mineral wool, and zeolite synthesis (Heidrich, 2005). Effective utilization of CCRs is 53% of total production (Heidrich et al., 2013).

The opencast coal and metal mining result in the formation of substantial amounts of different types of mine waste materials which depend on the geology at the mine area, physico-chemical composition, process technology, and mining operation (extraction, beneficiation, processing minerals) as well as how they are managed at the site (Maiti, 2013). Some mine wastes include: (a) overburden that presents natural soil or massive rock which is removed to gain access to the ore deposits at open pit mines and it is settled on the surface at the mine site; (b) waste rock which contains industrial minerals which cannot be extracted as market products and they are usually stored in heaps and dumps on the mine site; (c) tailings: coarse (dry) fractions of mineral waste products which remain after processing material extraction for profit; fine (wet) fractions resulting from flotation as mineral separation technique used for getting valuable products from the coarse fraction. Coarse and fine fractions of mineral waste are settled into tailings pond and heap and enclosed by dams (European Commission, 2009). However, sometimes, waste materials are turned into resources: overburden may be used for revegetation during mine closure, waste rock can be reprocessed to extract minerals and metals and used as backfill, aggregate in road construction and concrete whereas manganese and clay—rich tailings have been used in agro-forestry and construction materials (bricks and cement) (Lottermoster, 2012).

Coal fly ash is usually disposed by the “wet” method on the artificially made lagoons where fly ash and slag are mixed with water (Reijnders, 2005). From this suspension overflow and drainage wastewaters are generated and discharged indirectly through the drainage channels into the river. The drainage well-system is often located along the periphery of the embankment to prevent disturbance of the surrounding terrain and chemical pollution of groundwater. The raising of the peripheral embankments is achieved by hydrocycling of the ash, whereby the ash fractions are separated from the pulp and directed into a special device for “building” the dam. On the landfill, measures of protection are implemented in order to reduce the negative impact of fly ash on the environment. That is achieved by maintaining the drainage channels around the landfill, drainage wells throughout the entire landfill, maintaining the maximum surface of the water mirror (lakes) on the active cassette (25–55% of the surface), using a cannon system for

watering dry surfaces inside the flat part of the landfill, using a spray system for watering embankments and grass cover and conducting biological recultivation i.e., sowing grass and planting woody and bushy plant species Gajić et al., 2016. The fly ash disposal is done usually in cassettes where one is active and others are passive, and can be used for the technical consolidation of fly ash and drainage, but also in the case of accidents or the cessation of fly ash.

The facilities of mine tailings and waste rock can be swimming-pool tailings ponds and small or large ponds over 100 or 1,000 hectares. Waste rock and tailings heap can be over 200m high. Managing mine waste includes: discarding slurried tailings into ponds, surface water and groundwater; disposal of dry tailings or waste rock onto heaps or backfilling into underground mines or open pits; using them for the construction of tailings dam or land restoration. The choice of applied methods depends on cost, environmental impacts, and risk of failure (European Commission, 2009). ‘Best available techniques’ (BAT) for the environmentally sound management of tailings and waste rock include management strategies, monitoring, and risk assessment such as life-cycle management (design, construction, operational phases, closure, and after-care phase), prevention and control of water erosion and dust spreading, acid rock drainage (ARD) management (active/passive treatment, addition of buffering minerals), drainage of ponds, seepage management, accident prevention (dam design and construction, raising and operation of pond, and monitoring stability of tailings pond), restoration/revegetation heaps or dams, reduction of footprint (backfilling of waste materials), mitigation of accidents, closure, and after-care of facilities (European Commission, 2009). Therefore, BAT applies risk/safety and environmental management system (EMS).

Mining activities and coal production from surface mines as well as ore and fly ash disposal produce large changes in landscape, lead to land degradation, deterioration of air and water quality, near-total loss of vegetation, affecting negatively fauna, and human beings (Maiti, 2013; Gajić and Pavlović, 2018). Fly ash and mine waste-rock and tailings contain many metal(loid)s and persistent organic pollutants (POP)s which can be released in the environment leading to water, air and soil pollution (Jala and Goyal, 2006). Furthermore, fine particles can be dispersed due to wind in the surrounding environment affecting human health i.e., they provoke irritation in eyes, skin, noise, throat and respiratory system leading to anemia, asthma, bronchitis and cancer diseases (US Environmental Protection Agency, 2007).

This review is focused on unfavorable conditions prevailing on fly ash and mine waste deposits, and ecorestoration and phytoremediation of these anthropogenic sites worldwide. We discuss plant response to metal(loid)s stress i.e., uptake and translocation of metal(loid)s through transporter mechanisms and plant tolerance strategies (exclusion and accumulation) with special emphasis on chelation and antioxidant machinery. Sound knowledge is essential for the selection of native plant species that establish a self-sustaining vegetation cover providing sustainable green cleanup and successful ecorestoration of contaminated sites.

LIMITING FACTORS FOR PLANT GROWTH ON FLY ASH AND MINE WASTE DEPOSITS

Limiting factors for plant growth on fly ash deposits and mine spoil are unfavorable mechanical composition and pH, high concentrations of soluble salts, lack of essential nutrients, such as N and P, toxic concentrations of As, B, Cd, Cr, Cu, Hg, Mn, Mo, Ni, Pb, Se, reduced number of microorganisms that can fix nitrogen and reduced presence of mycorrhizae (Adriano et al., 1980; Pavlović et al., 2004; Mitrović et al., 2008; Haynes, 2009; Pandey, 2013; Pandey and Singh, 2014; Gajić et al., 2016; Gajić and Pavlović, 2018). Natural soil is different from fly ash and mine spoil mostly due to no or poorly developed soil structure throughout the profile, coarse texture with more sand fractions and less clay content whereas the content of N, P and other essential nutrients is very low (Maiti, 2013).

Generally, unweathering fly ash showed sandy structure (56.0–82.0%, Weber et al., 2015; 97.1%, Gajić et al., 2016; Kostić et al., 2018) with small amounts of colloidal particles (1.8%, Gajić et al., 2016; Kostić et al., 2018) and low percentage of hygroscopic water (0.54%, Gajić et al., 2016) that results in great water permeability and weak aggregation indicating adverse physical conditions for plant growth (Weber et al., 2015; Kostić et al., 2018) (**Table 1**). Furthermore, high values of electrical conductivity (EC) (150 $\mu\text{S}/\text{cm}$, Pandey and Singh, 2014; 0.352 dS/m, Gajić et al., 2016; Kostić et al., 2018) (**Table 1**) indicate a large amount of soluble salts whereas pH values can vary from 4.5 to 12 depending on coal type (Carlson and Adriano, 1993; Bilski et al., 1995). Thus, lignite and bituminous coal have alkaline fly ash, more Ca and less S (8.10, Pandey et al., 2012; 8.5–9.9, Weber et al., 2015; 7.9, Gajić et al., 2016) (**Table 1**). In addition, pH values from 7 to 10 enhance the release of As, Cr, Mo, Se, Sb, V, and W whereas Cd, Cr, Cu, Fe, Mn, Ni, Pb, Si, and Zn have maximum leachability pH under 7 (Izquierdo and Querol, 2012). The carbon content in unweathering fly ash is high (Gajić et al., 2016; Kostić et al., 2018) probably due to incomplete combustion of coal and may partly compensate the lack of organic matter (Fettweis et al., 2005). The nitrogen content (0.02%, Gajić et al., 2016; Kostić et al., 2018; 0.049%, Jambhulkar and Juwarkar, 2009) and available K_2O and P_2O_5 content (0.19, 0.17%, Jambhulkar and Juwarkar, 2009; 75.4, 21.1%, Pandey and Singh, 2014; 15.0 mg/100 g, 7.49 mg/100 g, Kostić et al., 2018) in fly ash are low (Pandey and Singh, 2014) (**Table 1**). However, total metal(loid)s concentration in fly ash, such as As, B, Cd, Cr, Co, Cu, Mn, Mo, Ni, Pb, Se can be toxic and can vary depending on coal, combustion conditions, operating parameters, transport system, leaching processes, effects on plants, and climatic conditions (Adriano et al., 1980; Haynes, 2009). Over time, proportion of total sand in fly ash is reduced (83.3–71.6%, Gajić et al., 2016) and the clay fraction is increased (1.2–2.5%, Gajić et al., 2016) whereas the percentage of hygroscopic water is increased (0.56–2.3%, Gajić et al., 2016) and this all together provides good aggregation and capillarity (Dželetović and Filipović, 1995; Gajić et al., 2016). In weathering fly ash, EC values (101.4 $\mu\text{S}/\text{cm}$, Pandey and Singh, 2014; 0.217–0.190 dS/m, Gajić et al., 2016) and pH decreased (7.95–7.87, Gajić et al., 2016; 8.85, Pandey and Singh, 2014), content of organic carbon (1.85–1.13%, Gajić et al.,

2016; 2.05%, Jambhulkar and Juwarkar, 2009) and total nitrogen (0.06–0.11%, Gajić et al., 2016; 0.05% Pandey and Singh, 2014) as well as the available content of K_2O and P_2O_5 increased (52.5 mg/100 g and 10.1 mg/100 g, Gajić et al., 2016; 38.2–59.5 mg/100 g, 25.3 mg/100 g, Kostić et al., 2018). The content of some elements (As, B, Cu, Mn, Mo, Zn) in weathering fly ash decreased as a result of leaching and strong element binding by Al, Si, and Fe oxides, clay and organic matter (Haynes, 2009; Gajić et al., 2016). Taken together, plant species growing on weathering fly ash deposits improve physico-chemical properties of fly ash providing favorable conditions for further plant growth (Weber et al., 2015; Gajić et al., 2016; Gajić and Pavlović, 2018).

Mine wastes show great heterogeneity in their texture and physico-chemical properties in metallic mining area. The wide range of mine spoil characteristics is related to differences in mineralogical substrate and composition of mine residue which can come from different ore minerals and veins as well as from the exploitation procedures, plant cover and climatic conditions (Gomez-Ros et al., 2013; Ruiz Olivares et al., 2013). Thus, on the more or less revegetated mining tailings the fractions of sand, silt and clay vary greatly (55–73, 22–33, 5–12% respectively, Conesa et al., 2006; 97.8, 0.96, 1.27% respectively, Randjelović et al., 2016) (**Table 1**). In addition, the mining wastes show different pH values from acid (2.5, Conesa et al., 2006; 3.14–3.30, Bes et al., 2014; 4.2–4.7, Santos et al., 2016), neutral to slightly alkaline (6.6–7.3%, Conesa et al., 2006; 6.85%, Randjelović et al., 2016; 7.1–7.5, Parraga-Aguado et al., 2014) to moderately alkaline values (8.2–8.4, Gomez-Ros et al., 2013; 8.52–8.66, Fernandez et al., 2017) (**Table 1**). Furthermore, the range of EC is also wide (6.4–18 dS/m, Conesa et al., 2006; 1.7–3.4 dS/m, Parraga-Aguado et al., 2014; 2.49–15.5 dS/m, Bes et al., 2014) where these values increased from the border of mine tailings to the plateau of barren area (Parraga-Aguado et al., 2013) (**Table 1**). The values of organic carbon (0.5%, Conesa et al., 2006; 0.17–0.48%, Bes et al., 2014; 1.55% Randjelović et al., 2016; 3.14–6.65%, Parraga-Aguado et al., 2014; 15.1–33.3, Santos et al., 2016) and total nitrogen (0.04%, Bes et al., 2014; 0.29–0.62%, Parraga-Aguado et al., 2014; 0.5–1.2%, Santos et al., 2016) also vary as well as available content of K_2O (7.67–37.0 mg/100 g, Randjelović et al., 2016; 42.3–129.0 g/kg, Santos et al., 2016) and P_2O_5 (0.05–24.0 mg/100 g, Randjelović et al., 2016; 0.9–74.3 mg/kg, Santos et al., 2016) (**Table 1**). The mine spoils on the tailings showed multielement pollution with high total concentrations of As, Cd, Cu, Fe, Hg, Mn, Ni, Pb, Sb, Zn that exceed local background values and the maximum allowed values proposed by any country legalization as well as agricultural/residential/commercial/industrial use and they largely depend on geochemical partitioning (Gomez-Ros et al., 2013; Parraga-Aguado et al., 2013; Ruiz Olivares et al., 2013; Bes et al., 2014; Randjelović et al., 2016; Santos et al., 2016).

ECORESTORATION OF FLY ASH AND MINE WASTE DEPOSITS

Development of vegetation cover on fly ash and mine waste deposits is significant because plant species stabilize

TABLE 1 | Physico-chemical characteristics of fly ash and mine waste.

Parameters	Unweathered fly ash	References	Weathered fly ash	References	Mine waste	References
Sand (%)	56.0–82.0 97.1	Weber et al., 2015 Gajić et al., 2016; Kostić et al., 2018	83.3–71.6	Gajić et al., 2016	55–73 97.8	Conesa et al., 2006 Randjelović et al., 2016
Silt (%)	17.0–40.0 9.4 1.11	Weber et al., 2015 Gajić et al., 2016 Kostić et al., 2018	25.7–40.8	Gajić et al., 2016	22–33 0.96	Conesa et al., 2006 Randjelović et al., 2016
Clay (%)	1.0–4.0 1.8 1.78	Weber et al., 2015 Gajić et al., 2016 Kostić et al., 2018	1.2–2.5	Gajić et al., 2016	5–12 1.27	Conesa et al., 2006 Randjelović et al., 2016
Higroscopic water (%)	0.54	Gajić et al., 2016 Kostić et al., 2018	0.56–2.3	Gajić et al., 2016	–	–
pH	8.10 8.5–9.9 7.9 8.03	Pandey et al., 2012 Weber et al., 2015 Gajić et al., 2016 Kostić et al., 2018	7.95–7.87 8.85	Gajić et al., 2016 Pandey and Singh, 2014	2.5–7.3 3.14–3.30 4.2–4.7 6.85 7.1–7.5 8.2–8.4 8.52–8.66	Conesa et al., 2006 Bes et al., 2014 Santos et al., 2016 Randjelović et al., 2016 Parraga-Aguado et al., 2014 Gomez-Ros et al., 2013 Fernandez et al., 2017
Electrical conductivity (EC, $\mu\text{S}/\text{m}$; dS/m)	150 0.352 0.353	Pandey and Singh, 2014 Gajić et al., 2016 Kostić et al., 2018	101.4 0.217–0.190	Pandey and Singh, 2014 Gajić et al., 2016	6.4–18 1.7–3.4 2.49–15.5	Conesa et al., 2006 Parraga-Aguado et al., 2014 Bes et al., 2014
Carbon content (C, %)	3.19	Gajić et al., 2016 Kostić et al., 2018	1.85–1.13 2.05	Gajić et al., 2016 Jambhulkar and Juwarkar, 2009	0.5 0.17–0.48 1.55 3.14–6.65 15.1–33.3	Conesa et al., 2006 Bes et al., 2014 Randjelović et al., 2016 Parraga-Aguado et al., 2014 Santos et al., 2016
Nitrogen content (N, %)	0.049 0.02	Jambhulkar and Juwarkar, 2009 Gajić et al., 2016 Kostić et al., 2018	0.06–0.11 0.05	Gajić et al., 2016 Pandey and Singh, 2014	0.04 0.29–0.62 0.5–1.2	Bes et al., 2014 Parraga-Aguado et al., 2014 Santos et al., 2016
Available potassium (K_2O , %; $\text{mg}/100\text{g}$)	0.007 36 15.0	Jambhulkar and Juwarkar, 2009 Pandey and Singh, 2014 Kostić et al., 2018	52.5 38.2–59.5	Gajić et al., 2016 Kostić et al., 2018	42.3–129.0 21.2	Santos et al., 2016 Randjelović et al., 2016
Available phosphorous (P_2O_5 , %; $\text{mg}/100\text{g}$)	0.016 7.26 7.49	Jambhulkar and Juwarkar, 2009 Pandey and Singh, 2014 Kostić et al., 2018	10.1 25.5	Gajić et al., 2016 Kostić et al., 2018	0.9–74.3 7.99	Santos et al., 2016 Randjelović et al., 2016

fly ash and mine spoil, prevent wind erosion, decrease mobility, toxicity, and dispersion of chemical elements in the surrounding environment, provide the organic substance which can bind contaminants and reduce transfer of pollutants in the food web (Dželetović and Filipović, 1995; Pavlović et al., 2004; Djurdjević et al., 2006; Mitrović et al., 2008; Dželetović et al., 2009; Haynes, 2009; Pandey, 2012; Maiti, 2013; Pandey et al., 2015a,b, 2016a; Gajić et al., 2016). Therefore, ecorestoration of degraded sites is the process of renewing ecosystem stability and resilience after stress or disturbance with respect to its health, integrity and sustainability (SER, 2002) presenting a key issue in environmental science and ecological engineering.

Native plant species grow in a particular area over a long period of time without human intervention and possess certain characteristics that make them the best adapted to local conditions providing practical and ecologically valuable alternative for landscaping and ecorestoration projects (Richards et al., 1998; Dorner, 2002). Phytomanagement of degraded

sites encourages selection of native species that in the long run form self-sustaining plant communities that do not require much maintenance. Establishing successful vegetation cover from native plant species on disturbed land promotes natural revegetation. Thus, selected native plants should have the following characteristics: (a) easy to establish, (b) fast growth, (c) deep root system, (d) capacity for nitrogen fixation, (e) tolerance to local climate; (f) tolerance to adverse physico-chemical conditions; (g) favorable growth with other species of the mixture; (h) capability to improve substrate fertility through organic matter and nutrient cycling (Maiti, 2013).

Successful ecorestoration is achieved by establishment of the self-sustaining vegetation cover through human intervention by seeding the mixture of grasses and legumes, and planting shrubs and trees (Pavlović et al., 2004; Mitrović et al., 2008; Kostić et al., 2012; Maiti, 2013; Gajić et al., 2016). In a temperate climate, grass and legume species that are the best for the revegetation of degraded sites belong to the genus of

Festuca, *Lolium*, *Agropyron*, *Poa*, *Medicago*, and *Vicia* whereas the trees that provide good phytostabilization of substrates are *Poplar*, *Robinia*, *Salix*, *Alnus*, *Betula*, and *Acer* (Prasad, 2006). However, in tropical region different plant genus are the best choice for the recultivation of degraded sites: *Chloris*, *Pennisetum*, *Vetiveria*, *Paspalum*, *Cynodon* (grasses); *Leucaena*, *Acacia*, and *Sesbania* (legumes) and *Prosopis*, *Eucaliptus* and *Ricinus* (trees) (Prasad, 2006). Legumes present keystone species because they provide nitrogen as the critical, most important resource on fly ash and mine waste deposits i.e., they perform nitrogen fixation in the atmosphere by using bacteria. Other plants such as *Secale cereale*, *Avena sativa*, *Hordeum sativum*, *Triticum aestivum*, *Dactylis glomerata*, *Festuca rubra*, *Poa pratensis*, *Lolium multiflorum*, *Lolium perenne*, *Arrhenatherum elatius*, *Phleum pretense* are important as nursery culture. These species act as pioneers, because they begin the process of revegetation providing erosion control, improve the physico-chemical composition of fly ash and mine spoil, retain moisture, and nutritional substances that will be later used by spontaneous colonizers (Mitrović et al., 2008; Maiti, 2013; Gajić et al., 2016).

Over time, plant species that are sown/planted or they spontaneously colonize fly ash and mine waste deposits bind substrate with a fibrous root system, and they spread by seeds and rhizomes forming a dense vegetation cover. In the initial phase of colonization, annual, and biennial plant species are dominant on the disposal. They are characterized by *r*-selection and with them the process of vegetation regeneration begins. According to Grime (1979) biennials can be competitive ruderals (C-R) and stress-tolerant ruderals (S-R). Annual plants have a short life span, rapid growth during the season and large production of seeds (*Erigeron*, *Chenopodium*) whereas biennials have a large amount of seeds, life cycle of several years, but they flower and fruit only once, after what they die (*Oenothera biennis*, *Daucus carota*, *Verbascum phlomoides*, *Tragopogon dubius*). Perennial, herbaceous plants spread and grow from the seeds, rhizomes, stolons, bulbs, and tubers. The rhizomes are used for the accumulation of reserve substances and survival during adverse periods, and serve as a link between the above-ground shoots (*Calamagrostis epigejos*, *Phragmites communis*, *Festuca rubra*, *Tussilago farfara*, *Cirsium arvense*, *Heliathus tuberosus*, *Epilobium*). Perennials can be stress-tolerant ruderals (S-R), stress-tolerant competitors (C-S), competitive ruderals (C-R) and “C-S-R” (Grime, 1979). Trees and shrubs that can grow on fly ash or mine waste deposits are *Acacia*, *Acer*, *Azadirachta*, *Albizia*, *Amorpha*, *Cassia*, *Dalbergia*, *Eucaliptus*, *Fraxinus*, *Grevillea*, *Leucaena*, *Melia azedarach*, *Morus*, *Platanus*, *Pongamia pinnata*, *Populus*, *Phyllanthus emblica*, *Rosa*, *Rubus*, *Salix*, *Tamarix*, *Tectona grandis* (Cheung et al., 2000; Maiti, 2013; Gajić and Pavlović, 2018; Gajić et al., in press). These plant species are characterized by K-selection because they have long-life cycle and slow growth with high assimilates investment in vegetative growth. Trees and shrubs can be competitors (C), stress-tolerant competitors (C-S), and stress tolerators (S) (Grime, 1979).

VEGETATION SURVEYS ON FLY ASH AND MINE WASTE DEPOSITS

Floristic composition of plant species on fly ash and mine waste deposits provides insight into the environmental and floristic potential of these sites in the process of biological recultivation and primary and secondary succession (Nikolić et al., 2014; Randjelović et al., 2014; Pandey et al., 2015a; Gajić and Pavlović, 2018) (Figures 1, 2). Vegetation surveys showed that a large number of plant species that are sown or spontaneously colonized these degraded sites belong to the families *Fabaceae*, *Poaceae*, *Asteraceae*, *Chenopodiaceae*, *Brassicaceae*, *Rosaceae* (Li et al., 2007; Pandey et al., 2015b; Gajić et al., in press).

The plant species that are tolerant to adverse conditions on fly ash deposits in Europe are *Achillea millefolium*, *Agrostis capillaries*, *Calamagrostis epigejos*, *Chenopodium rubrum*, *Cirsium arvense*, *Crepis setosa*, *Cynodon dactylon*, *Dactylis glomerata*, *Daucus carota*, *Echium vulgare*, *Erigeron canadensis*, *Equisetum* sp., *Epilobium hirsutum*, *Festuca rubra*, *Hypericum perforatum*, *Linaria vulgaris*, *Lolium perenne*, *Lotus corniculatus*, *Medicago sativa*, *Melilotus officinalis*, *Oenothera biennis*, *Phragmites communis*, *Plantago lanceolata*, *Reseda lutea*, *Rumex acetosella*, *Polygonum lapathifolium*, *Pycnus glomeratus*, *Sonchus arvensis*, *Sysimbrium orientale*, *Rumex obtusifolia*, *Salsola kali*, *Silene vulgaris*, *Sinapis arvensis*, *Solidago serotina*, *Senecio vulgaris*, *Sonchus oleraceus*, *Sorghum halepense*, *Trifolium repens*, *Tussilago farfara*, *Vicia villosa*, *Verbascum phlomoides*, *Xanthium strumarium*, *Acer pseudoplatanus*, *Amorpha fruticosa*, *Gleditschia triacanthos*, *Eleagnus angustifolia*, *Morus alba*, *Morus nigra*, *Robinia pseudoaccacia*, *Rosa canina*, *Rubus caesius*, *Populus alba*, *Salix alba*, and *Tamarix tetandra* (Hodgson and Townsend, 1973; Mulhern et al., 1989; Shaw, 1996; Djordjević-Miloradović, 1998; Pavlović et al., 2004; Djurdjević et al., 2006; Mitrović et al., 2008; Gajić and Pavlović, 2018; Gajić et al., in press) (Table 2). Furthermore, in India different plant herbaceous species colonize fly ash deposits: *Amaranthus deflexus*, *Calotropis procera*, *Cannabis sativa*, *Cassia tora*, *Chenopodium album*, *Croton bonplandium*, *Cynodon dactylon*, *Eclipta alba*, *Limnanthe*, *Ipomea carnea*, *Parthenium hysterophorus*, *Saccharum bengalense*, *Saccharum munja*, *Saccharum spontaneum*, *Sida cordifolia*, *Solanum nigrum*, *Thelypteris dentate*, *Typha latifolia* (Dwivedi et al., 2008; Gupta and Sinha, 2008; Maiti and Jaiswal, 2008; Pandey and Singh, 2014; Pandey, 2015; Pandey et al., 2015b, 2016a; Kumari et al., 2016) (Table 2). In Hong Kong, plant species that can grow on fly ash deposits are *Eleusine indica*, *Neyraudia reynaudiana*, *Tamarix chinensis*, *Chenopodium acuminatum*, *Fimbristylis polytrichoides*, *Pteridium aquilinum*, *Panicum repens* (Chu, 2008) whereas, in Australia plants with high ecological potential to grow on fly ash deposits are *Atriplex*, *Enchylaena tomentosa*, *Halosarcia*, *Mesembryanthemum*, *Nitraria billardieri* and *Scaevola colloris* (Jusaitis and Pillman, 1997) (Table 2). Vegetation surveys on fly ash deposits in South Africa showed the following plant species: *Amaranthus hybridus*, *Chamaecrista bienis*, *Chloris gayana*, *Cynodon dactylon*, *Cyperus esculentus*, *Digitaria*



FIGURE 1 | Fly ash deposits at the thermoelectric plant station "Nikola Tesla-A" (TENT-A) in Obrenovac (Serbia): active cassette of fly ash (**A–D**); passive cassette of fly ash 3 years after biorecultivation with sown legumes, grasses, and shrubs (**E–I**); passive cassette of fly ash 11 years after biorecultivation with spontaneous colonizers (**J–N**).

eriantha, *Eragrostis* sp., *Hyparrhenia hirta*, *Lepidium bonariensis*, *Lespedeza cunea*, *Brachiaria serrata*, *Heteropogon contortus*, *Tristachya leucothrix*, *Setaria sphacelata* (Morgenthal et al., 2001; Van Rensburg et al., 2003) (**Table 2**).

Plant species that have high capacity to grow and survive in mining areas are *Agrostis stolonifera*, *Calamagrostis epigejos*, *Cerastium arvense*, *Polygonum aviculare*, and *Tussilago farfara* in flotation tailings from Cu ore in Poland (Kasowska et al., 2018); *Agrostis capillaries*, *Rumex acetosella*, *Vicia hirsute*, *Apera spica-venti*, *Chenopodium botrys*, *Xanthium italicum*, *Equisetum palustre*, *Persicaria lapathifolia*, *Vulpia myuros*, *Polygonum*

lapathifolia, *Betula pendula*, *Populus tremula*, *Populus alba*, and *Populus nigra* in in Timok River floodplain that are partially damaged by slurry sulphidic waste from Cu mine in Bor in Serbia (Nikolić et al., 2014, 2016); *Agrostis stolonifera*, *Epilobium dodonaei*, *Calamagrostis epigejos*, and *Centaurea arenaria* on non-reclaimed overburden sites, *Robinia pseudoacacia*, *Cirsium eriophorum*, *Festuca valeisaca*, *Linaria genistifolia*, *Taraxacum officinale*, *Convolvulus arvensis*, *Achillea millefolium*, *Vicia cracca*, *Daucus carota*, *Centaurea stoebe* *Poa pratensis*, and *Rumex crispus* on reclaimed overburden in Cu mine in Bor in Serbia (Randjelović et al., 2014, 2016); *Dittrichia viscosa*,

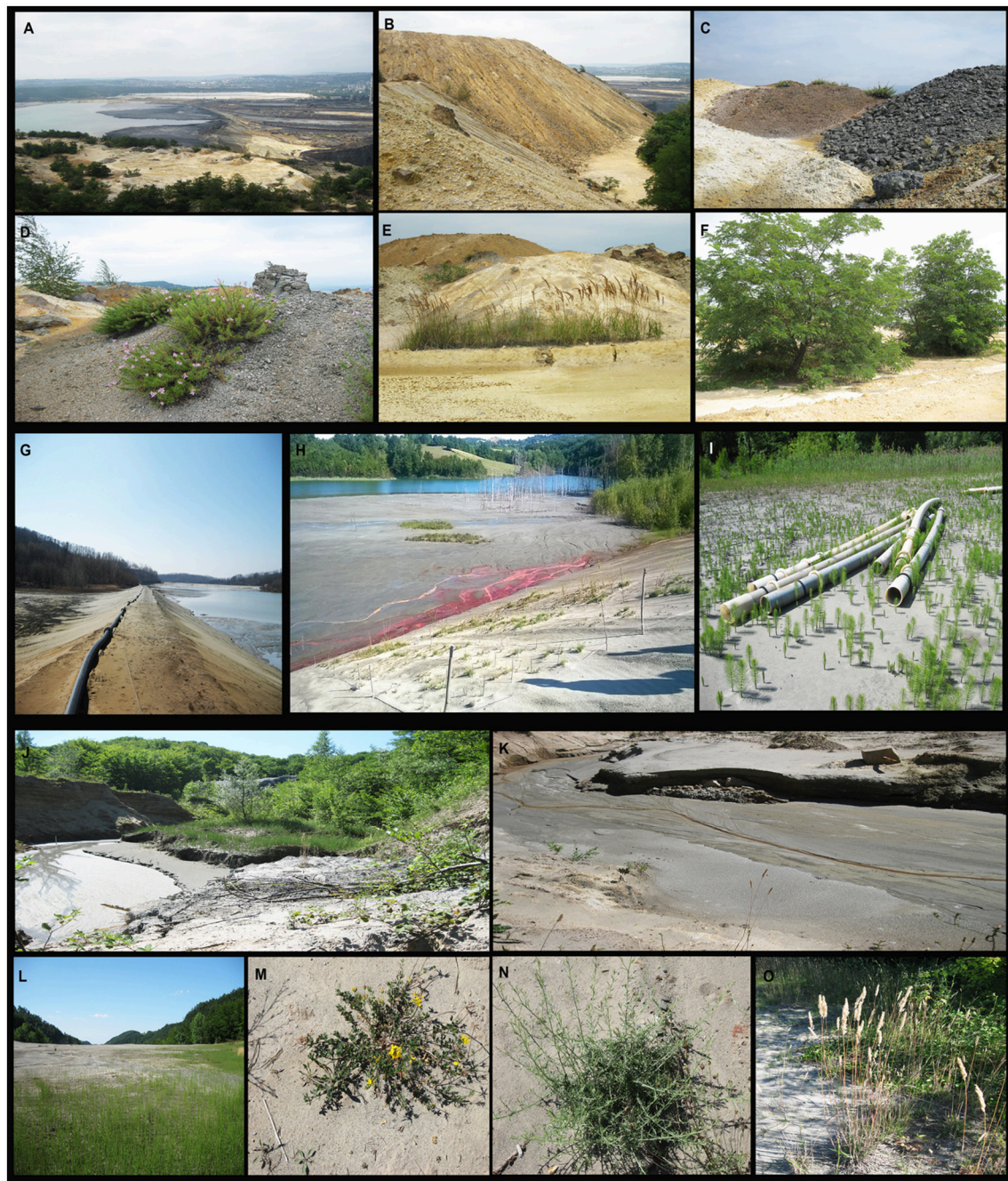


FIGURE 2 | Mine waste in Serbia: copper mine waste in metalliferous Bor region (A–C) with *Epilobium dodonaei* (D), *Calamagrostis epigejos* (E), and *Robinia pseudoaccacia* (F); mine flotation tailings at the Pb/Cu/Zn mine “Rudnik” (G–H) with spontaneously colonized *Equisetum* sp. (I); antimony flotation tailings “Stolice” after accidental flooding event with spontaneously colonized plant species 1 year later (J–O).

Cistus salviifolius and *Euphorbia pithyusa* in mining tailings in Sardinia (Jimenez et al., 2011); *Digitalis purpurea*, *Mentha suaveolens*, and *Ruscus ulmifolius* in abandoned Pb mine in Portugal (Pratas et al., 2013); *Zygophyllum fabago*, *Helichrysum decumbens*, *Tamarix*, *Lygeum spartum*, *Piptatherum miliaceum*, *Pinus halepensis*, *Tetraclinis articulata* in Cartagena-La Union

mining district, Spain (Conesa et al., 2006; Parraga-Aguado et al., 2014); *Coincya monensis*, *Agrostis durieui*, *Holcus lanatus*, *Festuca rubra*, *Dactylis glomerata*, *Cytisus striatus*, *Genista legionensis*, *Lotus corniculatus* in Pb-Zn and Hg-As mining waste in Spain (Fernandez et al., 2017); *Pistacia*, *terebinhtus*, *Cistus creticus*, *Pinus brutia*, and *Bosea cypria* in Cu containing

mine tailings in Cyprus (Johansson et al., 2005); *Ricinus communis* in mine tailings, Mexico (Ruiz Olivares et al., 2013); *Amaranthus watsonii*, *Solanum lumholtyianum*, *Bromus catharticus*, *Acacia farnesiana*, *Gnaphalium leucocephalum*, *Brickellia coulteri*, *Baccharis sarothoides*, *Prosopis velutina*, *Boerhavia coulteri* from abandoned mine tailings, Sonora, Mexico (Santos et al., 2017); *Salsola collina*, *Festuca elata*, *Medicago sativa*, *Ipomea purpurea*, *Grewia biloba*, *Cotinus coggygria*, *Zizipus jujube*, *Vitex negundo*, *Bidens parviflora*, *Sonchus oleraceus*, *Artemisia annua* and *Carex tristachya* on soil-rock mixture in abandoned mines in Beijing in China (Zhang et al., 2014); *Digitaria sanguinalis*, *Erigeron canadensis*, *Phytolaca acinosa*, *Pteris multifida*, *Cynodon dactylon*, and *Melastoma dodecandrum* in Mn mineland in China (Li et al., 2007) (**Table 2**).

PHYTOREMEDIATION—GENERAL ASPECTS

Phytoremediation presents an efficient, “green clean,” environmental, low cost, and eco-friendly technology that uses plants to reduce or remove inorganic and organic pollutants from environment (Raskin et al., 1997; Salt et al., 1998; McCutcheon and Schnoor, 2003; Pilon-Smits and LeDuc, 2009). The term phytoremediation consists of the Greek prefix “phyto” which means “plant” and the Latin suffix “remedium” which means “renew, able to cure or restore” (Raskin et al., 1997). The main phytoremediation technologies are phytostabilization and phytoextraction, rhizodegradation/phytostimulation and phytodegradation/phytotransformation (Raskin et al., 1997; Salt et al., 1998; McCutcheon and Schnoor, 2003; Pilon-Smits and LeDuc, 2009) (**Figure 3A**).

Phytostabilization is a phytoremediation technology which uses plants to reduce the mobility and bioavailability of metal(loid)s and organic pollutants in the surrounding environment preventing their migration in the soil and groundwater or their entry into the food web (Nwoko, 2010). In addition, phytostabilization improves the physico-chemical characteristics of the polluted substrate by increasing the content of organic matter and nutrient levels and preventing wind erosion. This can be achieved by using plant species that are named “excluders,” which are capable to limit the uptake of pollutants in high concentrations inside the plant tissue over a wide range of soil concentrations i.e., they immobilize pollutants in the substrate or in plant roots (Baker, 1981). The main mechanisms of phytostabilization are avoiding or excluding the pollutant from further transport at the root level by binding to the cell wall and/or preventing the transport through the plasma membrane, by the presence of mycorrhizal fungi and the presence of root exudates in the rhizosphere (Pilon-Smits and LeDuc, 2009).

Phytoextraction is a phytoremediation technology that uses plants capable of accumulating metal(loid)s in the roots and aerial parts of the plants (Reeves and Baker, 2000). This phytoremediation technique uses accumulators/hyperaccumulators because these plants survive regardless of excess concentration of metal(loid)s

in their above-ground tissues. Therefore, plants suitable for phytoextraction should have fast growth, high biomass, extended root system, high root-shoot transfer and good tolerance to high concentrations of metal(loid)s in the plant tissue (Tong et al., 2004). Generally, hyperaccumulators are not popular for phytoremediation due to slow growth rate and low biomass (Pilon-Smits and LeDuc, 2009). Uptake of pollutants from the environment and their accumulation is achieved through the formation of chelates and sequestration of the metal(loid)s in the vacuole of roots and leaves (Kidd et al., 2009).

Rhizodegradation/phytostimulation is phytoremediation technology that uses roots of plants which enhance microbial and fungal activity in the rhizosphere and breakdown organic pollutants (polycyclic aromatic hydrocarbons, PAHs and polychlorinated biphenyls, PCBs) (Pilon-Smits and LeDuc, 2009; Ma et al., 2011). According to Pilon-Smits and LeDuc (2009) suitable plant species should have large and dense root systems and rhizobacterial strains. Therefore, plants facilitate degradation of organic pollutants by stimulating microbial and fungal activity releasing exudes (organic acids, sugars, amino acids, phenolics, and enzymes dehalogenase, nitroreductase, peroxidase, laccase) (Ma et al., 2011). Stimulation of soil microbial communities by root exudates provides acquisition of nutrients, changes of pH, water flux, availability of oxygen around roots and root growth (Ahemad and Kibret, 2014; Kala, 2014). Plant growth promoting bacteria (PGPB) present a consortium of bacteria that colonize different niches of plant roots and they can degrade pollutants more efficiently than a single species/strain (Kuiper et al., 2004). Rhizobacteria, such as *Achromobacter*, *Arthrobacter*, *Azotobacter*, *Azospirillum*, *Bacillus*, *Enterobacter*, *Pseudomonas*, *Serratia*, and *Streptomyces* have been found to have beneficial effects on plant species in metal-contaminated environments because they can reduce the metal toxicity by biosorption and bioaccumulation (Tokala et al., 2002; Dimpka et al., 2009).

Phytodegradation / phytotransformation is a phytoremediation technology which implies degradation of organic compounds by plant enzymes within roots or leaves to simple molecules, such as CO₂ and H₂O (Burken, 2003; Pilon-Smits and LeDuc, 2009). The network of detoxification, degradation and storage of organic compounds in plants can be divided into three steps: (a) transformation (activation and transformation of organic compounds); (b) conjugation process which occurs between organic compounds and malonic acid, D-glucose, glutathione, and amino acids where conjugates become less mobile and less toxic; (ac) storage/elimination (sequestration or storage of organic compounds in cell vacuole, apoplast, or cell walls) (Burken, 2003). This cascade of metabolic reactions is also named the “green liver model” due to its similarity to the mammalian metabolism (Sandermann, 1994; Burken, 2003).

UPTAKE, TRANSPORT, TOLERANCE AND CROSS—TALK BETWEEN METAL(LOID)S IN PLANTS

The uptake of metal(loid)s depends on total and available concentrations, cation exchange capacity, redox potential, pH,

TABLE 2 | Plant species grown on fly ash deposits and mine waste worldwide.

Plant species	References
FLY ASH DEPOSITS	
Europe	
<i>Achillea millefolium</i> , <i>Agrostis capillaries</i> , <i>Calamagrostis epigejos</i> , <i>Chenopodium rubrum</i> , <i>Cirsium arvense</i> , <i>Crepis setosa</i> , <i>Cynodon dactylon</i> , <i>Dactylis glomerata</i> , <i>Daucus carota</i> , <i>Echium vulgare</i> , <i>Erigeron canadensis</i> , <i>Equisetum</i> sp., <i>Epilobium hirsutum</i> , <i>Festuca rubra</i> , <i>Hypericum perforatum</i> , <i>Linaria vulgaris</i> , <i>Lolium perenne</i> , <i>Lotus corniculatus</i> , <i>Medicago sativa</i> , <i>Mellilotus officinalis</i> , <i>Oenothera biennis</i> , <i>Phragmites communis</i> , <i>Plantago lanceolata</i> , <i>Reseda lutea</i> , <i>Rumex acetosella</i> , <i>Polygonum lapathifolium</i> , <i>Pycnus glomeratus</i> , <i>Sonchus arvensis</i> , <i>Sysimbrium orientale</i> , <i>Rumex obtusifolia</i> , <i>Salsola kali</i> , <i>Silene vulgaris</i> , <i>Sinapis arvensis</i> , <i>Solidago serotina</i> , <i>Senecio vulgaris</i> , <i>Sonchus oleraceus</i> , <i>Sorghum halepense</i> , <i>Trifolium repens</i> , <i>Tussilago farfara</i> , <i>Vicia villosa</i> , <i>Verbascum phlomoides</i> , <i>Xanthium strumarium</i> , <i>Acer pseudoplatanus</i> , <i>Amorpha fruticosa</i> , <i>Gleditschia triacanthos</i> , <i>Eleagnus angustifolia</i> , <i>Morus alba</i> , <i>Morus nigra</i> , <i>Robinia pseudoacacia</i> , <i>Rosa canina</i> , <i>Rubus caesius</i> , <i>Populus alba</i> , <i>Salix alba</i> , <i>Tamarix tetandra</i>	Hodgson and Townsend, 1973; Mulhern et al., 1989; Shaw, 1996; Djordjević-Miloradović, 1998; Pavlović et al., 2004; Djordjević et al., 2006; Mitrović et al., 2008; Gajić and Pavlović, 2018; Gajić et al., in press
India	
<i>Amaranthus deflexus</i> , <i>Calotropis procera</i> , <i>Cannabis sativa</i> , <i>Cassia tora</i> , <i>Chenopodium album</i> , <i>Croton bonplandium</i> , <i>Cynodon dactylon</i> , <i>Eclipta alba</i> , <i>Limnanthe</i> , <i>Ipomea carnea</i> , <i>Parthenium hysterophorus</i> , <i>Saccharum bengalense</i> , <i>Saccharum munja</i> , <i>Saccharum spontaneum</i> , <i>Sida cordifolia</i> , <i>Solanum nigrum</i> , <i>Thelypteris dentata</i> , <i>Typha latifolia</i>	Dwivedi et al., 2008; Gupta and Sinha, 2008; Maiti and Jaiswal, 2008; Pandey and Singh, 2014; Pandey, 2015; Pandey et al., 2015b, 2016a; Kumari et al., 2016
Hong kong	
<i>Eleusine indica</i> , <i>Neyraudia reynaudiana</i> , <i>Tamarix chinensis</i> , <i>Chenopodium acuminatum</i> , <i>Fimbristylis polytrichoides</i> , <i>Pteridium</i> , <i>aquilinum</i> , <i>Panicum repens</i>	Chu, 2008
Australia	
<i>Atriplex</i> , <i>Enchylaena tomentosa</i> , <i>Halosarcia</i> , <i>Mesembryanthemum</i> , <i>Nitraria billardieri</i> , <i>Scaevola collaris</i>	Jusaitis and Pillman, 1997
South Africa	
<i>Amaranthus hybridus</i> , <i>Chamaecrista bienis</i> , <i>Chloris gayana</i> , <i>Cynodon dactylon</i> , <i>Cyperus esculentus</i> , <i>Digitaria eriantha</i> , <i>Eragrostis</i> sp. <i>Hyparrhenia hirta</i> , <i>Lepidium bonariensis</i> , <i>Lespedeza cunea</i> , <i>Brachiaria serrata</i> , <i>Heteropogon contortus</i> , <i>Tristachya leucothrix</i> , <i>Setaria sphacelata</i>	Morgenthal et al., 2001; Van Rensburg et al., 2003
MINE WASTE	
Poland	
<i>Agrostis stolonifera</i> , <i>Calamagrostis epigejos</i> , <i>Cerastium arvense</i> , <i>Polygonum aviculare</i> , <i>Tussilago farfara</i>	Kasowska et al., 2018
Serbia	
<i>Agrostis capillaries</i> , <i>Rumex acetosella</i> , <i>Vicia hirsute</i> , <i>Apera spica-venti</i> , <i>Chenopodium botrys</i> , <i>Xanthium italicum</i> , <i>Equisetum palustre</i> , <i>Persicaria lapathifolia</i> , <i>Vulpia myuros</i> , <i>Polygonum lapathifolia</i> , <i>Betula pendula</i> , <i>Populus tremula</i> , <i>Populus alba</i> , <i>Populus nigra</i> , <i>Agrostis stolonifera</i> , <i>Epilobium dodonaei</i> , <i>Calamagrostis epigejos</i> , <i>Centaurea arenaria</i>	Nikolić et al., 2014, 2016; Randjelović et al., 2014; Randjelović et al., 2016
Sardinia	
<i>Dittrichia viscosa</i> , <i>Cistus salviifolius</i> , <i>Euphorbia pithyusa</i>	Jimenez et al., 2011
Portugal	
<i>Digitalis purpurea</i> , <i>Mentha suaveolens</i> , <i>Ruscus ulmifolius</i>	Pratas et al., 2013
Spain	
<i>Zygophyllum fabago</i> , <i>Helichrysum decumbens</i> , <i>Tamarix</i> , <i>Lygeum spartum</i> , <i>Piptatherum miliaceum</i> , <i>Pinus halepensis</i> , <i>Tetraclinis articulate</i> , <i>Coincya monensis</i> , <i>Agrostis durieui</i> , <i>Holcus lanatus</i> , <i>Festuca rubra</i> , <i>Dactylis glomerata</i> , <i>Cytisus striatus</i> , <i>Genista legionensis</i> , <i>Lotus corniculatus</i>	Conesa et al., 2006; Parraga-Aguado et al., 2014; Fernandez et al., 2017
Cyprus	
<i>Pistacia terebinhtus</i> , <i>Cistus creticus</i> , <i>Pinus brutia</i> , <i>Bosea cypria</i>	Johansson et al., 2005
Mexico	
<i>Ricinus communis</i> <i>Amaranthus watsonii</i> , <i>Solanum lumholtzianum</i> , <i>Bromus catharticus</i> , <i>Acacia farnesiana</i> , <i>Gnaphalium leucocephalum</i> , <i>Brickellia coulteri</i> , <i>Baccharis sarothoides</i> , <i>Prosopis velutina</i> , <i>Boerhavia coulteri</i>	Ruiz Olivares et al., 2013 Santos et al., 2017
China	
<i>Salsola collina</i> , <i>Festuca elata</i> , <i>Medicago sativa</i> , <i>Ipomea purpurea</i> , <i>Grewia biloba</i> , <i>Cotinus coggygria</i> , <i>Zizipus jujube</i> , <i>Vitex negundo</i> , <i>Bidens parviflora</i> , <i>Sonchus oleraceus</i> , <i>Artemisia annua</i> , <i>Carex tristachya</i> , <i>Digitaria sanguinalis</i> , <i>Erigeron canadensis</i> , <i>Phytolaca acinosa</i> , <i>Pteris multifida</i> , <i>Cynodon dactylon</i> , <i>Melastoma Dodecandrum</i>	Zhang et al., 2014 Li et al., 2007

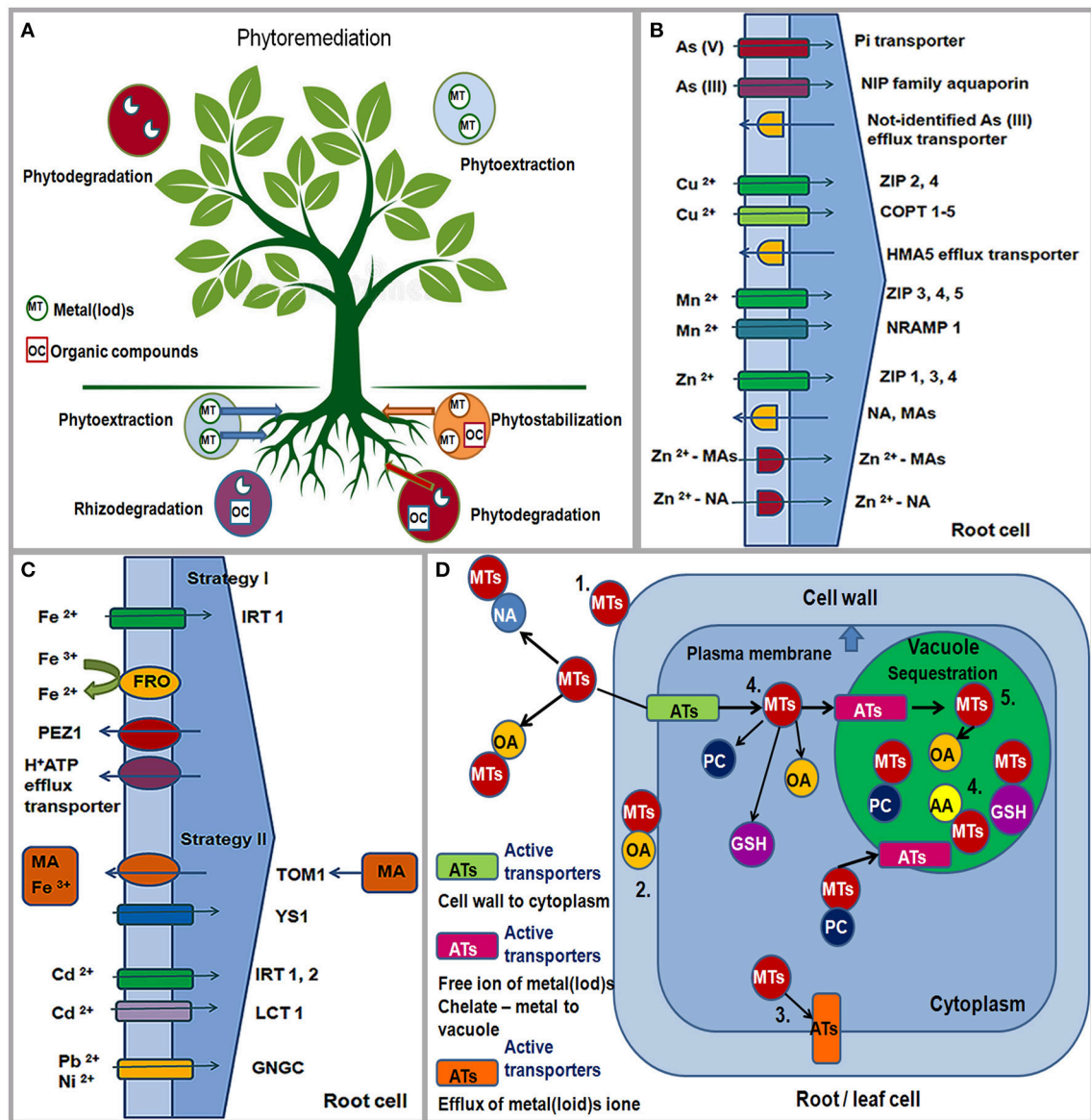


FIGURE 3 | Phytoremediation technologies: Phytostabilization; Phytoextraction; Phytostimulation/Rhizodegradation; Phytodegradation/Phytotransformation. MT, metal(loid)s; OC, organic compounds. Pollutants can be stabilized or degraded in the rhizosphere, sequestered or degraded in plant roots and leaves (schema modified from Pilon-Smits and LeDuc, 2009) **(A)**. Strategies for As, Cu, Zn, Mn, Fe, Cd, Ni and Pb uptake by plant roots from soil through different active transporters (ATs); ZIP/IRT, zinc, iron regulated protein; COPT, copper putative transporter; NRAMP, natural resistance –associated macrophage protein; HMA-heavy metal P-type ATPase; H⁺ATP, HA-proton efflux transporter; FRO-ferric reductase/oxidase; PEZ1, phenolics efflux zero1; TOM1, efflux transporter; YS1, yellow stripe-like1; NA, nicotamine; MA, family of mugineic acids; LCT1, low-affinity cation transporter; GNGC channels, putative transition metal transporter (schema modified from Hall and Williams, 2003; Clemens, 2006) **(B,C)**. Tolerance mechanisms for metal(loid)s in plants: (1) binding of metal(loid)s to the cell wall, (2) chelate of metal-organic acid on the outside of the cell membrane, (3) active metal efflux from cells, (4) metal-chelator complexes (5) compartmentalization or sequestration in a vacuole; ATs, active transporters; MTs, metal(loid)s; OA, organic acid; NA, nicotamine; AA, amino acids; GSH, glutathione; PC, phytochelatin (schema modified from Tong et al., 2004; Pilon-Smits and LeDuc, 2009) **(D)**.

the presence of Al, Fe and Si oxide, organic matter, texture, aeration and moisture of soil, and climatic conditions (Kabata-Pendias, 2011). Adaptive mechanisms of plants that are related to the uptake and translocation of pollutants can be different and they are associated with distribution, redistribution, storage, and detoxification of metal(loid)s in roots and leaves. Adaptive

responses of plants to high or low concentrations of chemical elements include changes in the expression of the transporter genes responsible for the uptake, efflux, translocation, and sequestration of elements in plants (Memon and Schröder, 2006). Transport of metal(loid) ions from roots to leaves is performed via membrane transporters, amino acids and/or organic acids

(Jabeen et al., 2009). The maintenance of metal-ion homeostasis and plant tolerance in plants is enabled by some families of transporters in roots and leaves: a) influx transporters: ZIP/IRT family of proteins (zinc-iron regulated protein permease) and NRAMP protein (natural resistance-associated macrophage protein); b) efflux transporters: HM—ATPase, CDF (cation diffusion facilitator), CAX (cation exchanger) and ABC (ATP-binding cassette transporters) (Yang et al., 2005; Arif et al., 2016; Castro et al., 2018) (**Figures 3B,C**).

Plant tolerance to deficiency or toxicity of metal(loid)s can be achieved by excluding the element from further course of transport or its accumulation in plant cells (Baker, 1987). The exclusion mechanism is based on the limited absorption and accumulation of toxic metal(loid) ions through: (a) increasing their binding capacity to the cell wall, (b) preventing their entry into the cytoplasm and transport through the plasma membrane by reducing the absorption through modification of the ion channels and/or ejection of the metal(loid)s from the cell by active efflux pump, as well as forming from the outer side of the plasma membrane metal—chelate complexes with organic acids (OA) (Tong et al., 2004) (**Figure 3D**). Tolerance to high metal(loid) concentrations in cell cytoplasm (accumulation) is achieved through: (a) inactivation by forming complexes between different chelate compounds (glutathione, GSH; phytochelatin, PC; organic acids, OA and amino acid, AA) and metal(loid)s; (b) compartmentalization in vacuoles and other cellular organelles (chloroplasts, mitochondria, Golgi apparatus, endoplasmic reticulum) and/or sequestration of metals by chaperones (proteins involved in intracellular transport of metals to the place of activation) (Tong et al., 2004; Anjum et al., 2015; Singh et al., 2016) (**Figure 3D**).

Therefore, As (V) is taken up through the phosphate transport system (As—Pi) whereas As (III) is adopted by the NIP family of aquaporin proteins (nodulin 26-like protein) (Verbruggen et al., 2009) (**Figure 3B**). As can be loaded into xylem and transported by the silicon transporter (Lsi2) (Ma et al., 2008). In the cell, As forms a complex with glutathione (As—GSH) that can be transported in a vacuole through an unidentified ABC transporter or can form a complex with phytochelatin (As—PCs) (Tripathi et al., 2007). In the condition of excess B, BOR2, and BOR4 transporters are accumulated in the plasma membrane of root cells (Miwa et al., 2007; Takano et al., 2007). B can be exported from root cells into xylem reducing B concentration in roots (Reid, 2014). In roots and leaves, B is bound to the cell wall in the form of B-RGII complex which mitigates boron toxic effects on metabolism and plant growth (Reid and Fitzpatrick, 2009; Reid, 2014). In addition, tonoplast intrinsic protein (TIP), such as AtTIP5;1 localized to the vacuolar membrane is more expressed under high B condition in leaf tissues (Pang et al., 2010).

Furthermore, Cu is taken up into the root cells through ZIP2 and ZIP4 transporters and putative copper influx transporters (COPT1), and then transferred into the cell via other transporters, such as COPT3 and COPT5 proteins (**Figure 3B**), HM—ATPases and chaperones to the vacuole, chloroplast, mitochondria and Golgi complex, where it is sequenced: HMA5

protein is responsible for efflux Cu from root cells and its loading to xylem; HMA7/RAN1 (responsive-to-antagonist1) is a transporter in roots and leaves that has the role of delivering Cu to Golgi complex; HMA6/PAA1 transports Cu to the membrane of chloroplast, and further via chaperones (CCs) to Cu/Zn SOD; HMA8/PAA2 protein transports Cu through thylakoid membrane to plastocyanines (PC); COX chaperones deliver Cu into mitochondria; ATX1 delivers Cu to HMA5 protein, and CCH delivers Cu to Golgi complex (Puig et al., 2007; Yruela, 2009; Migocka and Malas, 2018).

High content of Mn is taken up by roots through ZRT/IRT1 transporters (Pedas et al., 2005) whereas in the condition of Mn deficiency ZIP3-ZIP7, NRAMP1 and OsNRAMP5 transporters are active (López-Millán et al., 2004; Lanquar et al., 2010; Sasaki et al., 2012) (**Figure 3B**). In the conditions of Mn deficiency, OsNRAMP5 transporter is also necessary in the accumulation of Mn in leaves whereas NRAMP3/NRAMP4 proteins transport Mn in the vacuole of the leaf and they are essential for the maintenance of photosynthetic efficiency (Lanquar et al., 2010). Intracellular transport and accumulation of Mn and its sequencing in root and leaf cells are achieved through proteins: P-type ATPase transport Mn into the endoplasmic reticulum (ECA1 – excess Mn, EC3 – Mn deficiency) and Golgi complex (PMR1); MCF family of proteins (mitochondrial carrier family) through chaperone MTM1 transport Mn to MnSOD; Metal/H⁺ antiporter (CAX2), CDF family of transporters (ShMTP1), and ABC transporters transfer and accumulate Mn in the vacuole, thereby maintaining the homeostasis of Mn and providing its optimal amount for the metabolic processes in the plant cells (Wu et al., 2002; Shigaki et al., 2003).

Uptake, transport, intracellular sequencing and maintenance of homeostasis Zn in plant cells are regulated by numerous membrane transporters and chelating agents (Sinclair and Krämer, 2012; Moreira et al., 2018). In the conditions of Zn deficiency in *Graminae*, the secretion of phytosiderophores (mugenic acid families, MAs) is increased whereas in other plants the biosynthesis of nicotinamine (NA) is dominant (**Figure 3B**). MAs and NA are excreted in the rhizosphere by specific transporters and have a high binding affinity for Zn. Formed Zn—MAs and Zn—NA complexes are further taken up and transported through the root cell membrane (Sinclair and Krämer, 2012) (**Figure 3B**). In the conditions of Zn deficiency, numerous ZRT—IRT transporters are active (ZIP 1, 3 9–12 take up Zn from the soil; IRT3, ZIP4, 5, 8 transport Zn from root to leaf (Bashir et al., 2012) (**Figure 3B**). Furthermore, P—type ATPases are responsible for Zn flow in apoplast and xylem, accumulation of Zn in plastids and its sequencing in the vacuole (HMA2 and HMA4 transport Zn from root to leaf, Wong and Cobbett, 2009) and under the condition of high zinc content, HMA1 transporter contributes to the detoxification of Zn in chloroplast (Kim et al., 2009); CDF family of transporters (Metal Tolerance Proteins such as MTP1, 2, 3) transport Zn in the vacuole of leaves and roots; MFS family of transporters (Major Facilitator Superfamily of transporters), such as zinc induced facilitator (ZIF1) protein is localized in the tonoplast of the vacuole and is capable of

transporting organic acid, Zn-organic acid complex, or NA in the vacuole (Haydon et al., 2012); amino acid histidine and organic acids can form Zn complexes (Zn—histidine, Zn—malate and Zn—citrate) in cytoplasm and the vacuole of roots and leaves (Sinclair and Krämer, 2012) whereas PCR2 (cystein-rich protein) exports Zn from root to leaves (Song et al., 2010).

Fe acquisition mechanisms are different in dicotyledonous (Strategy I) and graminaceous plants (Strategy II) (Kobayashi and Nishizawa, 2012; Nikolić and Pavlović, 2018; Tripathi et al., 2018). In Strategy I, plants acidify the soil and reduce Fe^{3+} to soluble form Fe^{2+} that is transported across the root plasma membrane through ferric reductase oxidase 2 (FRO2) and 3 (FRO3) transporters (Mukherjee et al., 2006) (Figure 3C). Fe uptake by roots also occurs through the IRT1 transporter (Hall and Williams, 2003) (Figure 3C). Excretion of proton (H^+ -ATPase i.e., HA-proton efflux transporter) and phenolic compounds from roots to rhizosphere (phenolics efflux transporter, PEZ1, PHENOLICS EFFLUX ZERO 1) may increase the solubility of Fe ions or support the reducing capacity of Fe on the root surface (Ishimaru et al., 2011) (Figure 3C). In Strategy II, graminaceous plant response includes secretion of MAs; efflux transporter TOM1 (Nozoye et al., 2011) in the rhizosphere solubilizes Fe^{3+} and forms Fe^{3+} -MA complex that is taken up into root cells by the YELLOW STRIPE 1 (YS1) and YELLOW STRIPE 1-like (YSL) transporters (Inoue et al., 2009) (Figure 3C). Fe translocation in plants includes chelators such as citrate, NA and MAs (Takahashi et al., 2003; Aoyama et al., 2009). However, Fe can be effluxed into the xylem by AtFPN1/AtIREG1 transporters (ferroportin 1/iron regulated 1, Morrissey et al., 2009) localized in the plasma membrane. Influx transporters, such as YSL family members (YSL1, YSL2, YSL3, YSL15) are responsible for long-distance transport of NA-chelated iron into leaves. Furthermore, TOM1, IRT1, ENA1, ENA2 (nicotianamine 1 and 2) as efflux transporters are also important for Fe translocation inside the plant. According to Thomine et al. (2003) NRAMP3 and NRAMP4 transporters are significant in long distance metal transport. Fe mobilization in the chloroplast is enabled by FRO6,7 (ferric-chelate reductase oxidase) and MARI/IREG3 (multiple antibiotic resistance 1/iron-regulated protein 3), that are both localized in envelope membranes (Conte and Walker, 2011); PIC1 protein (chloroplast permease 1) transports Fe across the inner envelope membrane of the chloroplast and regulates its homeostasis (Duy et al., 2007); vacuolar iron transporter 1 (VIT1) is proposed to efflux Fe from cytosol into vacuole (Kim et al., 2006).

Lead (Pb), chromium (Cr), and cadmium (Cd) do not have physiological functions in plants and can be toxic at low concentrations whereas nickel (Ni) is essential and cobalt (Co) is a beneficial microelement for plants (Marschner, 1995). Major transporter system responsible for the uptake of Fe^{2+} , Mn^{2+} , Zn^{2+} , Ca^{2+} is ZIP/IRT, but according to Clemens (2006) the uptake of Cd from soil seems to occur via same transporters due to chemical similarity. Therefore, IRT1, IRT2 can be primarily responsible for Cd uptake into the root, accumulation and translocation (Nakanishi et al., 2006) (Figure 3C). In addition,

$\text{Cd}^{2+}/\text{H}^+$ and CAX2 antiporters might be involved in the accumulation of Cd in the vacuole of the root (Hirshi et al., 2000). The LCT1 (low-affinity cation transporter) is important for the uptake of Cd whereas GNGC channels are permeable for Ni and Pb (Hall and Williams, 2003) (Figure 3C). Plants in the condition of Pb excess and nutrient deficiency activate the same H^+ /ATPase pumps (Zhang et al., 2011). However, the main pathway by which Pb enters the roots is Ca^{2+} -permeable channel due to competition between two cations (Pourrut et al., 2011). Furthermore, NRAMP1,3 transporters are able to transport Cd and Co in roots and shoots (Thomine et al., 2000). According to Hall and Williams (2003) HMA1-4 transporters are involved in the efflux and transport of $\text{Co}^{2+}/\text{Cd}^{2+}/\text{Pb}^{2+}$ whereas HMA9 is responsible for the export of Pb and Cd from the cell. ABC transporters (MRPs) are responsible for the Cd accumulation in the vacuole of the root in the form of chelates PC-Cd and GS-Cd (Bovet et al., 2003); CDF transporters are involved in sequestration of Cd, Co and Ni in the vacuole of leaves (Persans et al., 2001); CBP4 protein shows tolerance to Ni and hypersensitivity to Pb and it is responsible for reduced Ni concentration and increased Pb content in plant cells (Sunkar et al., 2000). Some magnesium transporters, such as MGT1 show high affinity for Ni and its transport and accumulation in roots and leaves (Li et al., 2001) whereas DTX1 (protein for Detoxification 1) belongs to MATE family of transporters (multidrug and toxic compound extrusion) and it is capable of detoxifying Cd (Li et al., 2002).

The determination of bioconcentration factor (BCF) and translocation factor (TF) is important for assessing the phytoremediation potential of plants (Yoon et al., 2006) as well as the mechanisms of tolerance and the survival strategy of plants on degraded sites (Baker, 1981). Bioconcentration factor (BCF) defines the relationship between the content of the chemical element in the root and its content in the substrate, providing information about element accumulation in the roots and removal efficiency of the chemical element from the given substrate. Translocation factor (TF) defines the relationship between the content of the chemical element in the leaves and its content in the root providing information about the efficiency of plants to transport metal(loid)s from root to leaves. It is stated that plants having $\text{BCF} > 1$ and $\text{TF} < 1$ show phytostabilization potential (Yoon et al., 2006). In addition, plants with $\text{BCF} < 1$ and TF higher than one as well as BCF and $\text{TF} < 1$ also show phytostabilization potential. Plants that have all these combinations are excluders, because they possess mechanisms that maintain low uptake of soil-metal contents and small shoot-metal contents. However, plants with BCF and $\text{TF} > 1$ are suitable for phytoextraction and they are accumulators/hyperaccumulators.

PHYTOREMEDIATION OF FLY ASH DEPOSITS

Plant species growing on fly ash deposits showed high phytostabilization or phytoextraction potential for different chemical elements (Table 3). Thus, sown species *Festuca rubra*

on fly ash deposits can be considered as an excluder suitable for phytostabilization due to limited transport of As, Cu, Mn, and Zn from root to leaves ($BCF < 1$, $TF < 1$) in spite of efficient transport of B in leaves ($BCF < 1$, $TF > 1$) (Gajić et al., 2016); *Ricinus communis* can be considered as a good phytostabilizer of fly ash for Cd, Cu, Ni, Pb, and Zn due to $BCF < 1$ and $TF < 1$ (Pandey, 2013); *Saccharum munja* is an excluder plant for Cd, Cr, Cu, Ni, Pb, Zn ($BCF < 1$, $TF < 1$), Fe and Mn ($BCF < 1$, $TF > 1$) (Pandey et al., 2012) indicated that this plant retained more elements in roots than in leaves or in spite of efficient transport of some elements from root to leaves, this species possesses mechanisms that prevent the uptake of high content of metals in plants; *Typha latifolia* is a good phytostabilizer for Cd in fly ash ($BCF < 1$, $TF < 1$) as well as for Cr, Cu, Ni, Pb, and Zn ($BCF < 1$, $TF > 1$) whereas for Mn this species can be considered as a good accumulator ($BCF > 1$, $TF > 1$) (Pandey et al., 2014); *Ipomea carnea* showed high phytostabilization potential for Cu ($BCF < 1$, $TF < 1$), Ni, Pb ($BCF > 1$, $TF < 1$), Cr ($BCF < 1$, $TF > 1$) whereas for Cd ($BCF > 1$, $TF > 1$) this species can be suitable for phytoextraction (Pandey, 2013); *Thelypterys dentate* is an excluder plant for Fe, Si ($BCF < 1$, $TF < 1$) as well as for As, Cd, Pb ($BCF > 1$, $TF < 1$) (Kumari et al., 2013); *Sida cardifolia* is suitable for phytostabilization because of larger content of Co, Ni ($BCF < 1$, $TF < 1$) and Pb ($BCF > 1$, $TF < 1$) in roots than in leaves whereas it is an accumulator for Cd, Cr, Cu, Fe, Zn ($BCF > 1$, $TF > 1$) (Gupta and Sinha, 2008); *Cynodon dactylon* is also an excluder plant suitable for phytostabilization of Fe, Ni ($BCF < 1$, $TF < 1$), Pb ($BCF > 1$, $TF < 1$), Cd, Cu, Mn ($BCF < 1$, $TF > 1$) (Kumar et al., 2015) because it maintains low uptake of metal content and relatively small shoot-metal content in plants; *Chenopodium album* possesses an excluder mechanism for Cd, Cr ($BCF > 1$, $TF < 1$) and Mn ($BCF < 1$, $TF > 1$) which makes it a good candidate for phytostabilization of fly ash whereas for Co, Cu, Fe, Ni, Pb, and Zn ($BCF > 1$, $TF > 1$) this species can be marked as an accumulator suitable for phytoextraction (Gupta and Sinha, 2008).

Plant species that can grow on fly ash and possess a high rhizomediation potential for organic compounds are *Agropyron*, *Cynodon dactylon*, *Festuca arundacea*, *Festuca rubra*, *Lolium perenne*, *Lotus corniculatus*, *Trifolium pretense*, *Melilotus officinalis*, *Helianthus annuus* (McCutcheon and Schnoor, 2003) (Table 3). Plant promoting bacteria (PGPB) is characteristic for *F. arundacea* (Huang et al., 2004) whereas *Rhizobium leguminosarum* was found in *L. perenne* and *T. pretense* (Johnson et al., 2005). Bacterial strains that enhance the degradation of PAHs for *Sorgum bicolor* are *Pseudomonas montellii*, *Bacillus subtilis*, *B. pumilis*, *Pseudomonas pseudoalcaligenes* and *Brevibacterium halotolerans* (Duponnois et al., 2006; Abou-Shanab et al., 2008) (Table 3). In addition, *Salix* inoculated with *Pseudomonas* sp., *Janthinobacterium lividum*, *Serratia marcescens*, *Flavobacterium* sp., *Streptomyces* sp., and *Agromyces* sp. showed high potential for rhizodegradation of PAHs (Kuffner et al., 2008) (Table 3). Furthermore, *Medicago sativa* and *Lolium perenne* show high potential in phytoremediation of PCB compounds because they enhance the number of microbial populations inoculated by *Glomus* sp. (arbuscular mycorrhizas, AMF) (Teng et al., 2010; Lu et al., 2014).

Plants that can grow on fly ash deposits and have high potential for phytodegradation of PAHs are *Daucus carota* (Tao et al., 2004), *Festuca arundacea* (Gao et al., 2013), *Lolium multiflorum*, *Amaranthus* sp., *Raphanus sativus*, *Ipomea* sp. (phenanthrene, pyrene, Gao and Zhu, 2004), *Sorghum drummondii* (Petrová et al., 2017), and *Chenopodium rubrum* (benzo(a)pyrene, Harms et al., 1977) (Table 3). In addition, plant species that are capable to metabolize the PCBs to the bound residue of cell walls by enzymes UDP-dependent glycosyltransferases (glucose, glucuronic acid) or by peroxidases and polyphenol oxidases (lignin, pectin, hemicelluloses) are *Trifolium repens*, *Triticum aestivum*, *Hordeum vulgare*, *Daucus carota*, *Atriplex* sp., *Rosa* sp. (Wilken et al., 1995; Kolb and Harms, 2000) (Table 3).

PHYTOREMEDIATION OF MINE WASTE DEPOSITS

Many plant species growing on mine waste rock and tailings showed great potential for phytoremediation (Table 3). Thus, *Cistus ladanifer* is suitable for phytostabilization of mining areas and can be considered as an excluder plant for Al, Ag, Ba, Bi, Sr, and Sb (Santos et al., 2016); *Ricinus communis* is an excluder for Cd, Cu, Mn, Pb, and Zn in spite of high concentrations of Mn in shoots (Ruiz Olivares et al., 2013); *Coincya monensis* is considered as Zn hyperaccumulator whereas, *Holcus lanatus*, *Festuca rubra*, *Dactylis glomerata* present good excluders of Hg and As on the Pb-Zn and Hg-As mining area (Fernandez et al., 2017); *Polygonum aviculare* grown at slightly acid spoil on mine tailings with Ag, Au, and Zn accumulated Zn is near the criteria for hyperaccumulators (Gonzalez and Gonzalez-Chavez, 2006); *Epilobium dodonaei* for Cu, Pb, and Zn (Randjelović et al., 2016), *Helichrisum decumbens*, *Zygophyllum fabago* and *Lygeum spartum* for Pb, Cu, and Zn (Conesa et al., 2006), *Acacia retinoides*, *Helianthemum syriacum*, *Pinus halepensis*, *Teucrium capitatum*, and *Thymelea hirsuta* for As, Cd, Pb, and Zn (Gomez-Ros et al., 2013) and *Euphorbia pithysa* for Pb, Cu, and Zn (Jimenez et al., 2011) showed low element concentrations in shoots despite highly contaminated mine spoils and they are suitable for phytostabilization; *Cynodon dactylon* and *Sorghum halepense* are good for phytostabilization of Pb-Zn mine waste (Madejon et al., 2002); *Ditrichia viscosa* can be a phytoextractor for As and Zn (Jimenez et al., 2011; Pistelli et al., 2017); *Acer pseudoplatanus*, *Fraxinus excelsior*, *Robinia pseudoacacia*, and *Salix* sp. are suitable for phytostabilization of mine waste (Mertens et al., 2007).

Microbial and fungal activity is important for restoration of mine tailings, establishment of plants and biogeochemical cycling (Noyd et al., 1995), particularly in acid mine drainage (Mills, 1985). Microorganisms change the bioavailability of heavy metals, solubilization of minerals in mine tailings, release nutrients, supply them to the plants, and enhance plant growth (Moynahan et al., 2002; Wu et al., 2006). Plant-growth promoting bacteria (PGPB), such as *Bacillus arsenicoselenatis*, *Chryssiogenes arsenates* and *Sulfurospirillum arsenophyllum* have a high potential for mobilizing As in mine tailings i.e., they are

TABLE 3 | Plant species growing on fly ash deposits and mine waste with high potential for phytostabilization, phytoextraction, phytodegradation, and rhizomediation.

Fly ash deposit			Mine waste		
Plant species	Bacterial strain	References	Plant species	Bacterial strain/Fungi	References
PHYTOSTABILIZATION					
<i>Festuca rubra</i>	As, B, Cu, Mn, Zn	Gajić et al., 2016	<i>Cistus ladanifer</i>	Al, Ag, Ba, Bi, Sr, Sb	Santos et al., 2016
<i>Saccharum munja</i>	Cd, Cr, Cu, Fe, Mn, Ni, Pb, Zn	Pandey et al., 2012	<i>Ricinus communis</i>	Cd, Cu, Mn, Pb, Zn	Ruiz Olivares et al., 2013
<i>Ricinus communis</i>	Cd, Cu, Ni, Pb, Zn	Pandey, 2013	<i>Holcus lanatus</i>	As, Hg	Fernandez et al., 2017
<i>Typha latifolia</i>	Cd, Cr, Cu, Ni, Pb, Zn	Pandey et al., 2014	<i>Festuca rubra</i>		
<i>Ipomea carnea</i>	Cu, Cr, Ni, Pb	Pandey, 2013	<i>Dactylis glomerata</i>		
<i>Thelypteris dentate</i>	As, Cd, Fe, Pb, Si	Kumari et al., 2013	<i>Epiobium dodonaei</i>	Cu, Pb, Zn	Randjelović et al., 2016
<i>Sida cardifolia</i>	Co, Ni, Pb	Gupta and Sinha, 2008	<i>Helichrisum</i>	Cu, Pb, Zn	Gonesa et al., 2006
<i>Cynodon dactylon</i>	Cd, Cu, Fe, Mn, Ni, Pb	Kumar et al., 2015	<i>decumbens</i>		
<i>Chenopodium album</i>	Cd, Cr, Mn	Gupta and Sinha, 2008	<i>Zygophyllum fabago</i>		
			<i>Lygeum spartum</i>		
			<i>Acacia retinoides</i>	As, Cd, Cu, Pb, Zn	Gomez-Ros et al., 2013
			<i>Helianthemum syriacum</i>		
			<i>Pinus halepensis</i>		
			<i>Teucrium capitatum</i>		
			<i>Thymelea hirsute</i>		
			<i>Euphorbia pithysa</i>	Cu, Pb, Zn	Jimenez et al., 2011
			<i>Cynodon dactylon</i>	Pb, Zn	Madejon et al., 2002
			<i>Sorghum halepense</i>		
			<i>Acer pseudoplatanus</i>		Mertens et al., 2007
			<i>Fraxinus excelsior</i>		
			<i>Robinia pseudoacacia</i>		
			<i>Salix</i> sp.		
PHYTOEXTRACTION					
<i>Typha latifolia</i>	Mn	Pandey et al., 2014	<i>Coincya monensis</i>	Zn	Gonzalez and
<i>Sida cardifolia</i>	Cd, Cr, Cu, Fe, Zn	Gupta and Sinha, 2008	<i>Polygonum aviculare</i>	Ag, Au, Zn	Gonzalez-Chavez, 2006;
<i>Chenopodium album</i>	Co, Cu, Fe, Ni, Pb, Zn	Gupta and Sinha, 2008			Fernandez et al., 2017
			<i>Ditrichia viscosa</i>	As, Zn	Jimenez et al., 2011;
					Pistelli et al., 2017
PHYTODEGRADATION					
<i>Daucus carota</i>	PAH	Tao et al., 2004;			
<i>Festuca arundacea</i>	PAH	Gao et al., 2013;			
<i>Lolium multiflorum</i>	PAH	Gao and Zhu, 2004			
<i>Amaranthus</i> sp.	PAH				
<i>Raphanus sativus</i>	PAH				
<i>Ipomea</i> sp.	PAH				
<i>Sorghum drummondii</i>	PAH	Petrová et al., 2017			
<i>Chenopodium rubrum</i>	PAH	Harms et al., 1977			
<i>Trifolium repens</i>	PCB	Wilken et al., 1995			
<i>Triticum aestivum</i>	PCB				
<i>Hordeum vulgare</i>	PCB				
<i>Daucus carota</i>	PCB				
<i>Atriplex</i> sp.	PCB	Kolb and Harms, 2000			
<i>Rosa</i> sp.	PCB				
RHIZOMEDIATION					
<i>Agropyron</i> sp.	PAH, PCB	McCutcheon and			
<i>Cynodon dactylon</i>	PAH, PCB	Schnoor, 2003			
<i>Festuca arundacea</i>	PAH, PCB				
<i>Festuca rubra</i>	PAH, PCB				
<i>Lolium perenne</i>	PAH, PCB				
<i>Lotus corniculatus</i>	PAH, PCB				
<i>Trifolium pretens</i>	PAH, PCB				
<i>Melilotus officinalis</i>	PAH, PCB				
<i>Helianthus annus</i>	PAH, PCB				

(Continued)

TABLE 3 | Continued

Fly ash deposit			Mine waste		
Plant species	Bacterial strain	References	Plant species	Bacterial strain/Fungi	References
PLANT PROMOTING BACTERIA (PGPB)/MYCORRHIZAL FUNGI					
<i>Lolium perenne</i> <i>Trifolium repens</i>	<i>Rhizobium leguminosarum</i>	Johnson et al., 2005	<i>Lotus edulis</i> <i>Lotus orithopodioides</i>	<i>Variovorax paradoxus</i> 5C-2 + <i>Mesorhizobium loti</i> Le2 <i>V. paradoxus</i> 5C-2 + <i>Sinorhizobium</i> sp. Mc1 <i>Bacillus megaterium</i> (633) + <i>Azozobacter chroococum</i>	Safranova et al., 2012 Petrisor et al., 2004
<i>Sorghum bicolor</i>	<i>Pseudomonas montellii</i> <i>Bacillus subtilis</i> <i>Bacillus pumilis</i> <i>Pseudomonas pseudoalcaligenes</i> <i>Brevibacterium halotolerans</i>	Duponnois et al., 2006; Abou-Shanab et al., 2008	<i>Sedum alfredii</i> + <i>Medicago sativa</i>	<i>Phyllobacterium myrsinacearum</i> RC6b	Liu et al., 2015
<i>Salix</i> sp.	<i>Pseudomonas</i> sp. <i>Janthinobacterium lividum</i> <i>Serratia marcescens</i> <i>Flavobacterium</i> sp. <i>Streptomyces</i> sp. <i>Agromyces</i> sp.	Kuffner et al., 2008	<i>Veronica rechingeri</i> <i>Zea mays</i> <i>Plantago lanceolata</i> <i>Salsola kali</i> <i>Panicum virgatum</i>	<i>Glomus</i> sp. <i>Glomus intraradices</i> <i>Glomus etunicatum</i>	Zarei et al., 2008 Turnau et al., 2012 Johnson, 1998

capable to take up As from substrate and lower its redox state (Macur et al., 2001). Mummey et al. (2002) showed significant enrichment of bacterial, fungal, and total microbial biomass after 20 years of reclamation on surface mines. Different strains of plant growth promoting rhizobacteria were isolated from mine spoils in *Lotus* sp. (Safranova et al., 2012), *Elymus repens*, *Bromus tectorum*, and *Cardaria draba* (Petrisor et al., 2004) as well as in *Sedum alfredii* and *Medicago sativa* (Liu et al., 2015) (Table 3). Mycorrhizal fungi are important for mine remediation and rehabilitation, such as *Glomus* sp. in *Veronica rechingeri* growing in Pb/Zn mine (Iran, Zarei et al., 2008), *Glomus intraradices* in *Zea mays* and *Plantago lanceolata* growing in Pb/Zn mine (Poland, Turnau et al., 2012) as well as *Glomus etunicatum* in *Salsola kali* and *Panicum virgatum* growing in an iron mine site (USA, Johnson, 1998) (Table 3).

CARBON SEQUESTRATION

Carbon (C) sequestration in soil refers to transferring CO₂ from the atmosphere into pedological and plant C pool in the form of soil inorganic carbon (SIC) that includes elemental C and carbonate minerals (CaCO₃ and MgCO₃), and organic carbon (SOC) which is stored in plants and organic matter (humus) (Lal et al., 2015). Benefits of terrestrial C sequestration include: (a) mitigation of climatic changes reducing net increase in atmospheric CO₂ concentration; (b) restoring soil quality; (c) improving water and nutrient storage capacity and elemental recycling; (d) reducing risk of erosion; (e) improving the environment; (f) increasing biodiversity (Olson et al., 2014; Lal et al., 2015). The SOC pool is the largest terrestrial source of carbon to 3 m depth (Olson et al.,

2014). A positive SOC budget can be achieved by increasing the input of aboveground (leaves, stems, branches; litter and understory vegetation) and belowground (roots including root exudates) biomass and use of organic fertilizers (compost and manure), and decreasing the loss or output of carbon by erosion, leaching, oxidation, and mineralization (Lal et al., 2015). An important component of the global carbon cycle is soil CO₂ flux that represents soil respiration which includes respiration from roots and microbial respiration (Law et al., 2002).

Revegetation of fly ash and reclaimed mine land increases SOC creating large carbon sink capacity which can be used as a potential pool for carbon sequestration (Pandey et al., 2016b; Airhwal and Maiti, 2018). According to Pandey et al. (2016b) the fly ash CO₂ flux from vegetated site was higher than from non-vegetated site. However, the CO₂ efflux rates were low in *Saccharum spontaneum* (84.29%) and *Prosopis juliflora* (92.09%) associations released minimum amount of CO₂ gas into the atmosphere leading to higher CO₂ sequestration. In the same time, the *S. spontaneum* had the highest aboveground and belowground biomass, and high content of organic carbon which can prove that this species is suitable for carbon sequestration. Furthermore, (Airhwal and Maiti, 2018) showed that in 11-years old reclaimed coal mine site CO₂ flux was lower (2.4 μmol CO₂ m⁻²s⁻¹) than in reference to forest soil (3.8 μmol CO₂ m⁻²s⁻¹) due to lower biomass and SOC pool. The CO₂ flux from forest soil in China (4.91 μmol CO₂ m⁻²s⁻¹, Sheng et al., 2010) and Europe (Germany, 3.49 μmol CO₂ m⁻²s⁻¹, Czech Republic, 1.04 μmol CO₂ m⁻²s⁻¹, Acosta et al., 2013) was higher than reclaimed coal mine (2.36 μmol CO₂ m⁻²s⁻¹, Airhwal et al., 2017 and 2.10 μmol CO₂ m⁻²s⁻¹, Mukhopadhyay and Maiti, 2014). However,

over time, more carbon is accumulated in plant biomass where in turn more CO₂ is sequestered presenting a win-win option in revegetation planning and phytomanagement of reclaimed sites.

MICOREMEDIATION

Endophytic non-mycorrhizal fungi can promote the remediation of degraded soils due to their regulation of metal(loid)s uptake (Kumar et al., 2018). Therefore, root-colonizing dark septate endophytic fungi (DSE) present conidial or sterile ascomycetes that may occur in contaminated sites protecting plants from metal(loid) stress: *Phialophora* in *Salix caprea* (Pb, Cd, Colpaert et al., 2011) and *Hymenoscyphus ericae* in *Pinus* (Cu, Zn, Cd mine soil, Utmazian et al., 2007). In addition, DSE are involved in nutrient cycling i.e., they colonize older parts of the roots where nutrients are redistributed from senescent roots into the active roots (Kumar et al., 2018). Furthermore, melanin in the cell wall of DSE hyphae may decrease metal(loid)s toxicity (Cu, Zn, Pb, Cd) increasing the activity of antioxidant enzymes (SOD, CAT) which in turn decreases oxidative stress (Zhang et al., 2008; Ban et al., 2012).

PLANT ADAPTIVE RESPONSE TO ENVIRONMENTAL STRESS

Integration of plant physiology and ecological restoration provides new perspectives on the relationship between plant physiological response to environmental stress and restoration ecology (Cooke and Suski, 2010). International guideline of the Society for Ecological Restoration provides many potential opportunities for using physiological tools to evaluate the success of restoration plans and projects. Ecophysiological models can be important for understanding processes between environmental stress factors and adaptive response of plants which may help managers for decision-making and assessment of success of different restoration strategies (Cooke and Suski, 2010). In addition, the fundamental understanding of plant physiology and biochemistry is important for selection of appropriate plant species for restoration of degraded sites.

Plant species that grow in the conditions of environmental stresses, such as drought, intense light, high temperature, salt stress, and toxicity/deficiency of metal(oids) show great variation in their mechanisms of tolerance (Gajić et al., 2018). Environmental stressors affect photosynthesis, respiration, water regime and mineral nutrition of plants leading to the production of reactive oxygen species (ROS) causing “oxidative stress” (Mittler, 2002). The maintenance of cell redox homeostasis is achieved by activating the antioxidant plant system that presents a complex of control systems that enable them to overcome stress with minimal damage to the cell structure and function (Foyer and Noctor, 2005; Halliwell, 2006). The balance between ROS production and biosynthesis of antioxidants is very important in controlling redox homeostasis in plant cells (Halliwell, 2006; Foyer and Shigeoka, 2011). Therefore, the efficient removal of ROS can

be achieved by activating the non-enzymatic and enzymatic components of antioxidant defense system. The non-enzymatic antioxidants include: carotenoids, α -tocopherol, phenolics, prolin, ascorbic acid (AsA), glutathione (GSH), phytochelatins (PCs), metallothionine (MTs). Enzymatic antioxidants include: superoxide dismutase (SOD), ascorbate peroxidase (APX), glutathione reductase (GR), glutathione peroxidase (GPX), catalase (CAT), glutathione S transferase (GST) (Mittler, 2002; Foyer and Noctor, 2005). However, ROS can act as signaling molecules in their adaptive response to stress (Foyer and Noctor, 2005; Foyer and Shigeoka, 2011). Thus, malondialdehyde (MDA) as a product of lipid peroxidation of membranes can act as the buffer of ROS with protective function i.e., it can be a signal for the gene expression of antioxidant enzymes and molecules during the oxidative stress (Weber et al., 2004). Generally, plants are well-adapted to the decreased amount of particular antioxidants inducing a signal for biosynthesis of other components of protection systems (Foyer and Noctor, 2005).

PLANT PHYSIOLOGICAL ADAPTATION ON FLY ASH

The photosynthetic efficiency of PSII (Fv/Fm) of plants growing on fly ash deposits were below the optimal range for plants (0.750–0.850, Björkman and Demmig, 1987) which indicates a low number of functionally active PSII reaction centers, photoinhibition of PSII and lower vitality of plants in stress conditions. Low values of Fv/Fm were measured in herbaceous plants grown on fly ash deposits, such as *Cirsium arvense*, *Epilobium collinum*, *Crepis bienis*, *Eupatorium cannabinum*, *Verbascum phlomoides*, *Calamagrostis epigejos*, *Oenothera biennis*, *Festuca rubra* (0.429–0.691) (Pavlović et al., 2004; Mitrović et al., 2008; Gajić et al., 2013, 2016), as well as in shrubs, such as *Tamarix tetandra*, *Amorpha fruticosa*, *Spiraea van-houttei* (0.588–0.727), and trees *Populus alba*, *Robinia pseudoaccacia* (0.541–0.626) (Pavlović et al., 2004; Kostić et al., 2012) (**Table 4**). However, *Festuca rubra* growing on fly ash lagoons that are 11 years old showed increased photosynthetic efficiency (Fv/Fm) indicating that this sown species over time activates adaptive mechanisms that increase the tolerance of the photosynthetic apparatus to stress. Furthermore, plants growing on fly ash deposits showed a high ability to maintain a relatively favorable water balance (Pavlović et al., 2004). Thus, relative water content (RWC) in *Spiraea van-houttei*, *Cirsium arvense*, *Verbascum phlomoides*, *Crepis setosa*, *Epilobium collinum*, and *Eupatorium cannabinum* were in the range 84.03–95.52% (Pavlović et al., 2004) (**Table 4**). However, low values of RWC (75.89%) and high values of water saturation deficit (WSD) (16.40%) were found in *Populus alba* (Pavlović et al., 2004) (**Table 4**). The sap osmotic potential was the most favorable in *Crepis setosa*, *Cirsium arvense* and *Verbascum phlomoides* (from –0.981 MPa to –1.135 MPa) whereas in *Populus alba* unfavorable sap osmotic value was detected (–1.377 MPa) (Pavlović et al., 2004) (**Table 4**).

TABLE 4 | Adaptive physiology of plants growing on fly ash deposits and mine waste.

Plant species	Parameter	References
FLY ASH DEPOSITS		
<i>Calamagrostis epigejos</i>	Fv/Fm	Pavlović et al., 2004;
<i>Cirsium arvense</i>		Mitrović et al., 2008;
<i>Crepis biensis</i>		Gajić et al., 2013;
<i>Epilobium collinum</i>		Gajić et al., 2016
<i>Eupatorium cannabinum</i>		Kostić et al., 2012
<i>Festuca rubra</i>		
<i>Oenothera biennis</i>		
<i>Verbascum phlomoides</i>		
<i>Amorpha fruticosa</i>		
<i>Populus alba</i>		
<i>Robinia pseudoaccacia</i>		
<i>Spiraea van-houttei</i>		
<i>Tamarix tetandra</i>		
<i>Cirsium arvense</i>	RWC, WSD	Pavlović et al., 2004
<i>Crepis biensis</i>	Osmotic potential	
<i>Epilobium collinum</i>		
<i>Eupatorium cannabinum</i>		
<i>Verbascum phlomoides</i>		
<i>Populus alba</i>		
<i>Spiraea van-houttei</i>		
<i>Festuca rubra</i>	Chlorophylls	Gajić et al., 2016
<i>Ricinus communis</i>	Carotenoids	Pandey, 2013
<i>Typha latifolia</i>		Pandey et al., 2014
<i>Thelypteris dentate</i>		Kumari et al., 2013
<i>Cicer arietinum</i>		Pandey et al., 2010
<i>Lolium perenne</i>		Lopareva-Pohu et al., 2011
<i>Festuca rubra</i>	MDA	Gajić et al., 2016
<i>Cicer arietinum</i>		Pandey et al., 2010
<i>Thelypteris dentate</i>		Kumari et al., 2013
<i>Calamagrostis epigejos</i>	Phenolics, AsA, DPPH	Gajić et al., 2013;
<i>Festuca rubra</i>		Gajić et al., 2016
<i>Oenothera biennis</i>	SOD, POD, CAT, GR,	Pandey et al., 2010
<i>Cicer arietinum</i>	GST	
<i>Thelypteris dentate</i>	Cys, NP-SH	Kumari et al., 2013
<i>Oryza sativa</i>		Dwivedi et al., 2007
<i>Beta vulgaris</i>	Phenolics, AsA, prolin,	Sinha and Gupta, 2005;
<i>Sesbania cannabina</i>	Cys, NP-SH	Singh et al., 2008
MINE WASTE		
<i>Arrhenatherum elatium</i>	Fv/Fm	Lu et al., 2013
<i>Sonchus transcaspicus</i>		
<i>Epilobium dodonaei</i>	Chlorophylls, Carotenoids	Randjelović et al., 2016
<i>Zygophyllum fabago</i>	MDA, H ₂ O ₂ , O ₂ ⁻	Lopez-Orenes et al., 2017
<i>Dittrichia viscosa</i>	ROS	Lopez-Orenes et al., 2018
<i>Epilobium dodonaei</i>	MDA	Randjelović et al., 2016
<i>Arrhenatherum elatium</i>	MDA	Lu et al., 2013
<i>Sonchus transcaspicus</i>		
<i>Zygophyllum fabago</i>	Phenolics, Proline, AsA, GSH, NPT, sugars, iPRX, PALs, PRX, DPPH	Lopez-Orenes et al., 2017
<i>Dittrichia viscosa</i>	Phenolics, AsA, GSH, sugars, PAL, sPRX, DPPH	Lopez-Orenes et al., 2018
<i>Epilobium dodonaei</i>	Phenolics, DPPH	Randjelović et al., 2016
<i>Arrhenatherum elatium</i>	SOD, POD, CAT, APX	Lu et al., 2013
<i>Sonchus transcaspicus</i>		
<i>Cardaminopsis arenosa</i>	SOD, POD, GSH,	Nadgorska-Socha et al.,
<i>Plantago lanceolata</i>	NP-SH, proline	2013

Decrease of chlorophylls and carotenoids content in plants growing on fly ash deposits were noted in *Ricinus communis*, *Typha latifolia*, *Thelypteris dentate*, *Festuca rubra*,

Amorpha fruticosa, *Tamarix tetandra*, *Populus alba* and *Robinia pseudoaccacia* (Kostić et al., 2012; Kumari et al., 2013; Pandey, 2013; Pandey et al., 2014; Gajić et al., 2016) in relation to control (Table 4). Furthermore, in *Cicer arietinum* which grew in fly ash treated soils, the content of chlorophylls decreased at 50 and 100% fly ash whereas carotenoids amount increased (Pandey et al., 2010) (Table 4). Similarly, chlorophylls and carotenoids content decreased in leaves of *Lolium perenne* growing on the soil where fly ash was added (Lopareva-Pohu et al., 2011). Small content of chlorophylls and carotenoids in plant leaves indicates that the photosynthetic pigments are sensitive to stress factors that prevail on fly ash, such as high temperature, drought, toxic concentrations of As, B, Cd, Cr, Pb, and the small amount of Cu, Mn, and Zn in leaves (Hajibold and Amirazad, 2010; Cervilla et al., 2012; Gajić et al., 2016). However, displacement of Mg in the structure of chlorophyll molecule with toxic metal(loid) ions due to similar chemical properties reduces its activity and leads to the non-functional molecule (Van Assche and Clijsters, 1990). In addition, small content of carotenoids in plants may suggest decreased photoprotection of the PSII which in turn leads to the reduction of photosynthetic efficiency (Gajić et al., 2016). Malondialdehyde (MDA) as an indicator of free radical production and lipid peroxidation of membranes indicates “oxidative stress” in plants (Weber et al., 2004). It was noted that MDA content in the roots and leaves of *Cicer arietinum* growing at 50 and 100% fly ash was high (Pandey et al., 2010) as well as in the roots and fronds of *Thelypteris dentate* at 75 and 100% fly ash (Kumari et al., 2013) (Table 4). According to Gajić et al. (2016) in the leaves of *Festuca rubra* grown on fly ash deposits (Table 4), the content of MDA was high probably as a result of toxic concentrations of As and B and the low content of Cu, Zn, and Mn.

Plant species that grow in the stress conditions prevailing on fly ash promote biosynthesis of antioxidants which can reduce the ROS leading to an increase in photosynthetic efficiency (Gajić et al., 2009, 2016; Hajibold and Amirazad, 2010; Kumari et al., 2013). Thus, in the leaves of sown species *Festuca rubra* and spontaneously colonized species *Calamagrostis epigejos* and *Oenothera biennis* growing on fly ash deposits, increased content of phenolics, ascorbic acids and radical scavenging activity were noted (Gajić et al., 2013, 2016) (Table 4). Furthermore, increased activity of superoxide dismutase (SOD), catalases (CAT), peroxidases (POD), glutathione reductase (GR), and glutathione S-transferase (GST) in *Cicer arietinum* growing at 50% and 100% fly ash were noted (Pandey et al., 2010) as well as increased content of cysteine and non-protein thiols (NP-SH) in *Thelypteris dentate* (Kumari et al., 2013) and *Oryza sativa* (Dwivedi et al., 2007) (Table 4). Other authors also showed that in experimental conditions with different levels of fly ash application, content of ascorbic acids, phenolics, proline, cysteine, and NP-SH in the leaves of *Beta vulgaris* and *Sesbania cannabina* increased (Sinha and Gupta, 2005; Singh et al., 2008) (Table 4). Increased biosynthesis of antioxidants in plant species that can grow on fly ash indicates that they possess a high ecophysiological adaptive potential to endure harsh conditions prevailing on fly ash deposits.

PLANT PHYSIOLOGICAL ADAPTATION ON MINE WASTE

Plant physiological and biochemical response to multiple stresses on mine waste rock and tailings may indicate their capacity to thrive under extreme environmental conditions (Table 4). The knowledge related to plant metabolite response can be useful for mine land reclamation programs. Thus, changes in antioxidative/oxidative parameters in *Zygophyllum fabago* growing on mine tailings revealed significant decrease of chlorophylls content, reduction of MDA content, H₂O₂ and O₂⁻ levels, proline content and the ionically-bound cell wall peroxidases (iPRX) whereas the total antioxidant capacity, particularly content of phenolic compounds (flavonoids, proanthocyanidins, hydroxycinnamic acids), ascorbic acid, GSH, NPT (total non-protein thiol), soluble sugars and activity of PAL (phenylalanine ammonia lyase) as well as activity of soluble peroxidases (sPRX) significantly increased (Lopez-Orenes et al., 2017). Therefore, reduction of oxidative stress is associated with the activation of plant antioxidant system to cope with unfavorable multielement pollution and harsh climatic conditions on mine tailings. Similarly, in *Dittrichia viscosa* growing on mine tailings, no changes were found in ROS, starch, soluble sugar concentrations, ascorbic acid and GSH content whereas the content of cell wall phenolics, PAL and sPRX activity increased (Lopez-Orenes et al., 2018). Slight reduction in the total antioxidant activity was related to the reduction of soluble phenolics. However, coordination of phenolic compounds in phenylpropanoid metabolisms could have a prominent role in the capability of plants to cope with oxidative stress and toxic pollutants in mine areas (Lopez-Orenes et al., 2018). *Epilobium dodonaei* growing on mine waste rock showed the reduction in chlorophylls and carotenoids amount and great content of MDA (Randjelović et al., 2016). Despite high oxidative stress, this species is capable to promote biosynthesis of soluble and cell-wall phenolics and other free radical scavenging compounds as a response to metal(loid)s stress on mine spoil (Randjelović et al., 2016). Lu et al. (2013) showed that *Sonchus transcaspicus* had a higher adaptive potential to metal-induced oxidative stress compared to *Arrhenatherum elatium* growing on mine tailings. Photosynthetic efficiency (Fv/Fm) and chlorophyll content decreased in both plants, but it is more pronounced in *A. elatius*. MDA content in the roots and leaves of *A. elatius* was high, whereas MDA content in the shoots of *S. transcaspicus* was not affected. Furthermore, in *S. transcaspicus* activity of SOD, POD, CAT, and APX in the shoots and roots was high. Activity of all these enzymes in the roots of *A. elatius* was also high, but in the shoots only POD activity was high (Lu et al., 2013). Nadgorska-Socha et al. (2013) found that in *Cardaminopsis arenosa* and *Plantago lanceolata* growing in mining areas, activity of SOD, POD, and GSH increased whereas non-protein-SH group content and proline decreased as a response to metal exposure.

CONCLUSION AND FUTURE OUTLOOK

Fly ash and mine disposal leads to the pollution of soil, surface and groundwater, dispersion of particles by wind having a negative impact on the surrounding environment and human health. Physico-chemical analysis of fly ash or mine waste rock and tailings showed sandy structure with low fractions of clay, low/high pH values, high electrical conductivity, small amount of N and available content of P₂O₅ and K₂O, high concentrations of As, B, Cd, Cr, Cu, Fe, Mn, Mo, Ni, Pb, Sb, Se, Zn as well as high content of PAHs and PCBs. Vegetation cover on fly ash and mine waste disposal is important to (a) prevent or minimize erosion by wind, (b) to stabilize the steep slopes on the embankments of lagoons, (c) to decrease mobility and toxicity of contaminants in the environment, (d) to provide organic matter which can bind contaminants. Establishment of native plant species, sowing grasses, and legumes and planting shrubs and trees on these disposal sites is essential for ecorestoration success accelerating the chance for spontaneous colonization of numerous native species. Therefore, selection of native plant species is important in revegetation, long-term stability and resilience of an ecosystem. Furthermore, phytoremediation is emerging “green” technology which uses plants and their associated rhizosphere microorganisms to clean up contaminated sites. The phytoremediation technologies which can be applied on fly ash and mine waste deposits are phytostabilization, rhizodegradation and phytodegradation, and to a lesser extent phytoextraction. Phytoremediation offers many advantages, such as low cost, public acceptance and aesthetic values making it suitable to remediate large contaminated areas.

Generally, there is a gap between researches in laboratories under controlled conditions and a “real field scenario” where plant species grow and survive in a polluted environment. The future prospects in phytomanagement of fly ash deposits and mine waste sites require better knowledge of native species that are the best adapted to local region which is important for maintaining ecosystem services and quality of human life. Studies about plant community structure, functional characteristics of ecosystems, biogeochemical cycles, and natural selection are considered to be significant for ecosystem integrity and resilience. Plant biotechnology includes genetic engineering of plants, rhizospheric microbes and fungi in order to remove inorganic or organic pollutants or decrease their toxicity because they possess a high capacity to accumulate or degrade pollutants. The new genomic technologies may identify novel genes for pollutant remediation. Furthermore, the future directions in the research of plant ecophysiological responses to environmental stresses require involvement of biophysics, physiology, biochemistry, molecular biology, and “omics” tools (genomes, transcriptomes, metabolomes, proteomes). Taken together, knowledge on the genetics, physiology, and biochemistry of plants can offer great prospects for improving phytoremediation technologies and cleanup of polluted environments. All these observations can be useful for the selection of suitable plant species capable to endure the environmental stress in contaminated areas and for

the development of successful phytomanagement of degraded sites on a global scale.

AUTHOR CONTRIBUTIONS

GG, LD, and PP designed the manuscript. GG and PP wrote the manuscript. MM, OK, and SJ critically evaluated the manuscript.

REFERENCES

- Abou-Shanab, R. A., Ghanem, K., Ghanem, N., and Al-Kolaibe, A. (2008). The role of bacteria on heavy metal extraction and uptake by plants growing on multi-metal contaminated soils. *World J. Microbiol. Biotechnol.* 24, 253–262. doi: 10.1007/s11274-007-9464-x
- Acosta, M., Pavelka, M., Montagnani, L., et al. (2013). Soil surface CO₂ efflux measurements in Norway spruce forests: comparison between four different sites across Europe – from boreal to alpine forest. *Geoderma* 192, 295–303. doi: 10.1016/j.geoderma.2012.08.027
- Adriano, D. C., Page, A. L., Elseewi, A. A., Chang, A. C., and Straugan, I. (1980). Utilization and disposal of fly ash and other coal residues in terrestrial ecosystems: a review. *J. Environ. Qual.* 9, 333–344. doi: 10.2134/jeq1980.00472425000900030001x
- Ahemad, M., and Kibret, M. (2014). Mechanisms and applications of plant growth promoting rhizobacteria: current perspective. *J. King Saud Univ. Sci.* 26, 1–20. doi: 10.1016/j.jksus.2013.05.001
- Airhwal, J., and Maiti, S. K. (2018). “Carbon sequestration and Soil CO₂ flux in reclaimed coal mine lands from India”, in *Bio-Geotechnologies for Mine Site Rehabilitation*, eds M. N. V. Prasad, P. J. C. Favas, and S. K. Maiti (Amsterdam: Elsevier), 371–392.
- Airhwal, J., Maiti, S. K., and Singh, A. K. (2017). Changes in ecosystem carbon pool and soil CO₂ flux following post-mine reclamation in dry tropical environment, India. *Sci. Tot. Environ.* 583, 153–162. doi: 10.1016/j.scitotenv.2017.01.043
- Anjum, N. A., Hasanuzzaman, M., Hossain, M. A., Thangavel, P., Roychoudhury, A., Gill, S. S., et al. (2015). Jaks of metal/metalloid chelation trade in plants – an overview. *Front. Plant Sci.* 6:192. doi: 10.3389/fpls.2015.00192
- Aoyama, T., Kobayashi, T., Takahashi, M., Nagasaka, S., Usuda, K., et al. (2009). OsYSL18 is a rice iron(III)-deoxymugineic acid transporter specifically expressed in reproductive organs and phloem of lamina joints. *Plant Mol. Biol.* 70, 681–692. doi: 10.1007/s11103-009-9500-3
- Arif, N., Yadav, V., Singh, S., Singh, S., Ahmad, P., Mishra, R. K., et al. (2016). Influence of high and low levels of plant-beneficial heavy metal ions on plant growth and development. *Front. Environ. Sci.* 4:69. doi: 10.3389/fenvs.2016.00069
- Baker, A. J. M. (1981). Accumulators and excluders – strategies in the response of plants to heavy metals. *J. Plant Nutr.* 3, 643–654. doi: 10.1080/01904168109362867
- Baker, A. J. M. (1987). “Metal tolerance.” *New Phytol.* 106, 93–111.
- Ban, Y., Tang, M., Chen, H., Xu, Z., Zhang, H., and Yang, Y. (2012). The response of dark septate endophytes (DSE) to heavy metals in pure culture. *PLoS ONE* 7:47968. doi: 10.1371/journal.pone.0047968
- Bashir, K., Ishimaru, Y., and Nishizawa, N. K. (2012). Molecular mechanisms of zinc uptake and translocation in rice. *Plant Soil* 36, 189–201. doi: 10.1007/s11104-012-1240-5
- Bes, C. M., Pardo, T., Bernal, M. P., and Clemente, R. (2014). Assessment of the environmental risks associated with two mine tailing soils from the La Union-Cartagena (Spain) mining district. *J. Geochem. Explor.* 147, 98–106. doi: 10.1016/j.gexplo.2014.05.020
- Bilski, J. J., Alva, A. K., and Sajwan, K. S. (1995). “Fly ash,” in *Soil Amendments and Environmental Quality*, ed J. E. Rechicgl (Boca Raton, FL: Lewis Publishers), 237–363.
- Björkman, O., and Demmig, B. (1987). Photon yield of O₂ evolution and chlorophyll fluorescence at 77k among vascular plants of diverse origins. *Planta* 170, 489–504. doi: 10.1007/BF00402983

ACKNOWLEDGMENTS

This work was supported by the Ministry of Education, Science and Technological Development of Serbia, Grant No. 173018. Two reviewers gave valuable comments for the improvement of this paper and we are greatly acknowledged.

- Bovet, L., Eggmann, T., Meylan-Bettex, M., Polier, J., Kammer, P., et al. (2003). Transcript levels of *AtMRPs* after cadmium treatment: induction of *AtMRP3*. *Plant Cell Environ.* 26, 371–381. doi: 10.1046/j.1365-3040.2003.00968.x
- Burken, J. G. (2003). “Uptake and metabolism of organic compounds: green liver model,” in *Phytoremediation, Transformation and Control of Contaminants*, eds S. C. McCutcheon and J. L. Schnoor (Hoboken, NJ: John Wiley and Sons, Inc. Publications), 59–84.
- Carlson, C. L., and Adriano, D. C. (1993). Environmental impacts of coal combustion residues. *J. Environ. Qual.* 22, 227–247. doi: 10.2134/jeq1993.00472425002200020002x
- Castro, P. H., Lilay, G. H., and Assunção, A. G. L. (2018). “Regulation of micronutrient homeostasis and deficiency response in plants,” in *Plant Micronutrient Use Efficiency. Molecular and Genomics Perspectives in Crop Plants*, eds M. A. Hossain, T. Kamiya, D. J. Burritt, L.-S. Phan Tran, and T. Fujiwara (London: Academic Press; Elsevier Inc.), 1–15.
- Cervilla, L. M., Blasco, B., Rios, J. J., Rosales, M. A., Sanchez-Rodriguez, E., Rubio-Wilhemí, M. M. et al. (2012). Parameters symptomatic for boron toxicity in leaves of tomato plants. *J. Bot.* 2012:726206. doi: 10.1155/2012/726206
- Cheung, K. C., Wong, J. P. K., Zhang, Z. Q., Wong, J. W. C., and Wong, M. H. (2000). Revegetation of lagoon ash using the legume species *Acacia auriculiformis* and *Leucaena leucocephala*. *Environ. Pollut.* 109, 75–82. doi: 10.1016/S0269-7491(99)00235-3
- Chu, M. (2008). natural revegetation of coal fly ash in a highly saline disposal lagoon in Hong Kong. *Appl. Veg. Sci.* 11, 297–306. doi: 10.3170/2008-7-18427
- Clemens, S. (2006). Toxic metal accumulation, response to exposure and mechanisms of tolerance in plants. *Biochimie* 88, 1707–1719. doi: 10.1016/j.biochi.2006.07.003
- Colpaert, J. V., Wevers, J. H., Krznaric, E., and Adriaensens, K. (2011). How metal-tolerant ecotypes of ectomycorrhizal fungi protect plants from heavy metal pollution. *Ann. For. Sci.* 68, 17–24. doi: 10.1007/s13595-010-0003-9
- Conesa, H., Faz, A., and Arnaldos, R. (2006). Heavy metal accumulation and tolerance in plants from mine tailings of the semiarid Cartagena-La Union mining district (SE Spain). *Sci.Tot. Environ.* 366, 1–11. doi: 10.1016/j.scitotenv.2005.12.008
- Conte, S. S., and Walker, E. L. (2011). Transporters contributing to iron trafficking in plants. *Mol. Plant* 4, 464–476. doi: 10.1093/mp/ssr015
- Cooke, S. J., and Suski, C. D. (2010). Ecological restoration and physiology: an overdue integration. *BioScience* 58, 957–968. doi: 10.1641/B581009
- Dimpka, C. O., Merten, D., Svatos, A., Büchel, G., and Kothe, E. (2009). Siderophores mediates reduced and increased uptake of cadmium by *Streptomyces tendae* F4 and sunflower (*Helianthus annuus*), respectively. *J. Appl. Microbiol.* 107, 1687–1696. doi: 10.1111/j.1365-2672.2009.04355.x
- Djordjević-Miloradović, J. (1998). *Population Dynamics of Plants in the Primary Succession of the Vegetation on the Waste Ash Deposits of the Thermoelectric Power Station Kostolac*. Dissertation/Doctoral thesis, Faculty of Biology, University of Belgrade, Belgrade (in Serbian).
- Djordjević, L., Mitrović, M., Pavlović, P., Gajić, G., and Kostić, O. (2006). Phenolic acids as bioindicators of fly ash deposit revegetation. *Arch. Environ. Contam. Toxicol.* 50, 488–495. doi: 10.1007/s00244-005-0071-2
- Dorner, J. (2002). *An Introduction to Using Native Plants in Restoration Projects*. Plant Conservation Alliance, Bureau of Land Management, US Department of Interior, US Environmental Protection Agency, 65.
- Duponnois, R., Kisa, M., Assigbetse, K., Prin, Y., Thioulouse, J., Issartel, M., et al. (2006). Fluorescent pseudomonas occurring in *Macrotermes subhyalinus* mound structure decrease Cd toxicity and improve its accumulation in sorghum plants. *Sci. Tot. Environ.* 370, 391–400. doi: 10.1016/j.scitotenv.2006.07.008

- Duy, D., Wanner, G., Meda, A., Von Wirén, N., and Soll, J., et al. (2007). PIC1, an ancient permease in *Arabidopsis* chloroplasts, mediates iron transport. *Plant Cell* 19, 986–1006. doi: 10.1105/tpc.106.047407
- Dwivedi, S., Srivastava, S., Mishra, S., Dixit, B., Kumar, A., and Tripathi, K. R. D. (2008). Screening of native plants and algae growing on fly-ash affected areas near National Thermal Power Corporation, Tanda, Uttar Pradesh, India for accumulation of toxic heavy metals. *J. Hazard. Mater.* 158, 359–365. doi: 10.1016/j.jhazmat.2008.01.081
- Dwivedi, S., Tripathi, R. D., Srivastava, S., Mishra, S., Shukla, M. K., Tiwari, K. K., et al. (2007). Growth performance and biochemical responses of three rice (*Oryza sativa* L.) cultivars grown in fly-ash amended soil. *Chemosphere* 67, 140–151. doi: 10.1016/j.chemosphere.2006.09.012
- Dželetović, Ž., and Filipović, R. (1995). Grain characteristics of crops grown on power plant ash and bottom slag deposit. *Resour. Conserv. Recy.* 13, 105–113. doi: 10.1016/0921-3449(94)00040-C
- Dželetović, Ž., Filipović, R. M., Stojanović, D., and Lazarević, M. M. (2009). Impact of lignite washery sludge on mine soil quality and poplar trees growth. *Land Degrad. Dev.* 20, 145–155. doi: 10.1002/ldr.888
- European Commission (2009). *Reference Document on Best-Available Techniques for Management of Tailings and Waste-Rock in Mining Activities*. Available online at: <http://eippcb.jrc.ec.europa.eu>
- Fernandez, S., Poschenrieder, C., Marceno, C., Gallego, J. R., Jimenez-Gamez, D., Bueno, A., et al. (2017). Phytoremediation capability of native plant species living on Pb-Zn and Hg-As mining wastes in the Cantabrian range, north Spain. *J. Geochem. Explor.* 174, 10–20. doi: 10.1016/j.gexplo.2016.05.015
- Fettweis, U., Bens, O., and Huttel, R. F. (2005). Accumulation and properties of soil organic carbon at reclaimed mine sites in the Lusatian lignite mining district afforested with *Pinus* sp. *Geoderma* 129, 81–89. doi: 10.1016/j.geoderma.2004.12.034
- Foyer, C., and Noctor, G. (2005). Redox homeostasis and antioxidant signaling: a metabolic interface between stress perception and physiological responses. *Plant Cell* 17, 1866–1875. doi: 10.1105/tpc.105.033589
- Foyer, C., and Shigeoka, S. (2011). Understanding oxidative stress and antioxidant functions to enhance photosynthesis. *Plant Physiol.* 155, 93–100. doi: 10.1104/pp.110.166181
- Gajić, G., Djurdjević, L., Kostić, O., Jarić, S., Mitrović, M., Stevanović, B., et al. (2016). Assessment of the phytoremediation potential and an adaptive response of *Festuca rubra* L. Sown on fly ash deposits: native grass has a pivotal role in ecorestoration management. *Ecol. Eng.* 93, 250–261. doi: 10.1016/j.ecoleng.2016.05.021
- Gajić, G., Mitrović, M., and Pavlović, P. (in press). “Ecorestoration of fly ash deposits by native plant species at thermal power stations (Serbia)” in *Phytomanagement of Polluted Sites*, eds V. C. Pandey and K. Baudh (Amsterdam: Elsevier).
- Gajić, G., Mitrović, M., Pavlović, P., Stevanović, B., Djurdjević, L., and Kostić, O. (2009). An assessment of the tolerance of *Ligustrum ovalifolium* Hassk. to traffic-generated Pb using physiological and biochemical markers. *Ecotoxicol. Environ. Saf.* 72, 1090–1101. doi: 10.1016/j.ecoenv.2009.01.010
- Gajić, G., and Pavlović, P. (2018). The role of vascular plants in the phytoremediation of fly ash deposits”, in *Phytoremediation: Methods, Management and Assessment*, ed V. Matichenkov (New York, NY: Nova Science Publishers, Inc.), 151–236.
- Gajić, G., Pavlović, P., Kostić, O., Jarić, S., Djurdjević, L., Pavlović, D., et al. (2013). Ecophysiological and biochemical traits of three herbaceous plants growing of the disposed coal combustion fly ash of different weathering stage. *Arch. Biol. Sci.* 65, 1651–1667. doi: 10.2298/ABS1304651G
- Gajić, G., Stamenković, M., and Pavlović, P. (2018). “Plant photosynthetic response to metal(loid) stress”, in *Environment and Photosynthesis. A Future Prospect*, eds V. P. Singh, S. Singh, R. Singh, S. M. Prasad (New Delhi: Studium Press (India), Pvt.Ltd), 145–209.
- Gao, Y., Zhang, Y., Liu, J., and Kong, H. (2013). Metabolism and subcellular distribution of anthracene in tall fescue (*Festuca arundinacea* Schreb.). *Plant Soil* 365, 171–182. doi: 10.1007/s11104-012-1386-1
- Gao, Y., and Zhu, L. (2004). Plant uptake, accumulation and translocation of phenanthrene and pyrene in soils. *Chemosphere* 55, 1169–1178. doi: 10.1016/j.chemosphere.2004.01.037
- Gomez-Ros, J. M., Garcia, G., and Penas, J. M. (2013). Assessment of restoration success of former metal mining areas after 30 years in a highly polluted Mediterranean mining area: Cartagena-La Union. *Ecol. Eng.* 57, 393–402. doi: 10.1016/j.ecoleng.2013.04.044
- Gonzalez, R. C., and Gonzalez-Chavez, M. C. A. (2006). Metal accumulation in wild plants surrounding mining wastes. *Environ. Pollut.* 144, 84–92. doi: 10.1016/j.envpol.2006.01.006
- Grime, J. P. (1979). *Plant Strategies and Vegetation Processes*. Chichester: John Wiley and Sons.
- Gupta, A. K., and Sinha, S. (2008). Decontamination and/or revegetation of fly ash dykes through naturally growing plants. *J. Hazard Mater.* 153, 1078–1087. doi: 10.1016/j.jhazmat.2007.09.062
- Hajibold, R., and Amirzad, F. (2010). Growth, photosynthesis and antioxidant defence system in Zn-deficient red cabbage plants. *Plant Soil Environ.* 56, 209–217. doi: 10.17221/207/2009-PSE
- Hall, J. L., and Williams, L. E. (2003). Transition metal transporters in plants. *J. Exp. Bot.* 54, 2601–2613. doi: 10.1093/jxb/erg303
- Halliwell, B. (2006). Reactive species and antioxidants. Redox biology is a fundamental theme of aerobic life. *Plant Physiol.* 141, 312–322. doi: 10.1104/pp.106.077073
- Harms, H., Dehen, W., and Moench, W. (1977). Benzo(a)pyrene metabolites formed by plant cells. *Z. Naturforsch.* 32c, 321–326. doi: 10.1515/znc-1977-5-602
- Haydon, M. J., Kawachi, M., Wirtz, M., Hillmer, S., Hell, R., et al. (2012). Vacuolar nicotianamine has critical and distinct roles under iron deficiency and for zinc sequestration in *Arabidopsis*. *Plant Cell* 24, 724–737. doi: 10.1105/tpc.111.095042
- Haynes, R. J. (2009). Reclamation and revegetation of fly ash disposal sites – Challenges and research needs. *J. Environ. Manage.* 90, 43–53. doi: 10.1016/j.jenvman.2008.07.003
- Heidrich, C. (2005). *Summary of Technical Options for Coal Combustion Products Utilization in Australia*. Wollongong, NSW: Ash Development Association of Australia.
- Heidrich, C., Fueborn, H. J., and Weir, A. (2013). “Coal combustion products: a global perspective,” *Proceedings World of Coal Ash (WOCA) Conference*, Lexington, KY, 22–25.
- Hirshi, K. D., Korenkov, V. D., Wilganowski, N. L., and Wagner, G. J. (2000). Expression of *Arabidopsis* CAX2 in Tobacco. Altered metal accumulation and increased manganese tolerance. *Plant Physiol.* 124, 125–134. doi: 10.1104/pp.124.1.125
- Hodgson, D. R., and Townsend, W. N. (1973). “The amelioration and revegetation of pulverized fuel ash,” in *Ecology and Reclamation of Devastated Land*, eds R. J. Hutnik and G. Davis (London: Gordon and Breach), 247–271.
- Huang, X. D., El-Alawi, Y., Penrose, D. M., Glick, B. R., and Greenberg, B. M. (2004). A multi-process phytoremediation system for removal of polycyclic aromatic hydrocarbons from contaminated soils. *Environ. Pollut.* 130, 465–476. doi: 10.1016/j.envpol.2003.09.031
- Inoue, H., Kobayashi, T., Nozoye, T., Takahashi, M., Kakei, Y., et al. (2009). Rice OsYSL15 is an iron-regulated Iron(III)-deoxymugineic acid transporter expressed in the roots and is essential for iron uptake in early growth of the seedlings. *J. Biol. Chem.* 284, 3470–3479. doi: 10.1074/jbc.M806042200
- Ishimaru, Y., Kakei, Y., Shimo, H., Bashir, K., Sato, Y., Uozumi, N., et al. (2011). A rice phenolic efflux transporter is essential for solubilizing precipitated apoplasmic iron in the plant stele. *J. Biol. Chem.* 286, 24649–24655. doi: 10.1074/jbc.M111.221168
- Izquierdo, M., and Querol, X. (2012). Leaching behavior of elements from coal combustion fly ash: an overview. *Int. J. Coal. Geol.* 94, 54–66. doi: 10.1016/j.coal.2011.10.006
- Jabeen, R., Ahmad, A., and Iqbal, M. (2009). Phytoremediation of heavy metals: physiological and molecular mechanisms. *Bot. Rev.* 75, 339–364. doi: 10.1007/s12229-009-9036-x
- Jala, S., and Goyal, D. (2006). Fly ash as a soil ameliorant for improving crop production – a review. *Bioresour. Technol.* 97, 1136–1147. doi: 10.1016/j.biortech.2004.09.004
- Jambhulkar, H., and Juwarkar, A. A. (2009). Assessment of bioaccumulation of heavy metals by different plant species grown on fly ash dump. *Ecotoxicol. Environ. Saf.* 72, 1122–1128. doi: 10.1016/j.ecoenv.2008.11.002
- Jimenez, M. N., Bacchetta, G., Casti, M., Navarro, F. B., Lallena, A. M., and Fernandez-Ondono, E. (2011). Potential use in phytoremediation of three plant

- species growing on contaminated mine-tailings soils in Sardinia. *Ecol. Eng.* 37, 392–398. doi: 10.1016/j.ecoleng.2010.11.030
- Johansson, L., Xydas, C., Messios, N., Stoltz, E., and Greger, M. (2005). Growth and Cu accumulation by plants grown on Cu containing mine tailings in Cyprus. *Appl. Geochem.* 20, 101–107. doi: 10.1016/j.apgeochem.2004.07.003
- Johnson, D. L., Anderson, D. R., and McGrath, S. P. (2005). Soil Microbial response during the phytoremediation of PAH contaminated soil. *Soil Biol. Biochem.* 37, 2334–2336. doi: 10.1016/j.soilbio.2005.04.001
- Johnson, N. C. (1998). Responses of *Salsola kali* and *Panicum virgatum* to mycorrhizal fungi, phosphorus and soil organic matter: implications for reclamation. *J. Appl. Ecol.* 35, 86–94. doi: 10.1046/j.1365-2664.1998.00277.x
- Jusaitis, M., and Pillman, A. (1997). Revegetation of waste fly ash lagoons. I. Plant selection and surface amelioration. *Waste Manage. Res.* 15, 307–321. doi: 10.1177/0734242X9701500308
- Kabata-Pendias, A. (2011). *Trace Elements in Soils and Plants, 4th Edn.* Boca Raton, FL; London; New York, NY; Washington, DC: CRC Press LLC.
- Kala, S. (2014). Rhizoremediation: a promising rhizosphere technology. *J. Environ. Sci. Toxicol. Food Technol.* 8, 23–27. doi: 10.5772/56905
- Kasowska, D., Gediga, K., and Spiak, Z. (2018). Heavy metal and nutrient uptake in plants colonizing post-flotation copper tailings. *Environ. Sci. Pollut. Res.* 25, 824–835. doi: 10.1007/s11356-017-0451-y
- Kidd, P., Barcelo, J., Bernal, M. P., Navari, I. F., Poschenrieder, C., Shilev, S., et al. (2009). Trace element behaviour at the root-soil interface: implications in phytoremediation. *Environ. Exper. Bot.* 67, 243–259. doi: 10.1016/j.envexpbot.2009.06.013
- Kim, S. A., Punshon, T., Lanzirrotti, A., Li, L., Alonso, J. M., et al. (2006). Localization of iron in *Arabidopsis* seed requires the vacuolar membrane transporter VIT1. *Science* 314, 1295–1298. doi: 10.1126/science.1132563
- Kim, Y. Y., Choi, H., Segami, S., Cho, H. T., Martino, E., et al. (2009). AtHMA1 contributes to the detoxification of excess Zn(II) in *Arabidopsis*. *Plant J.* 58, 737–753. doi: 10.1111/j.1365-3113X.2009.03818.x
- Kobayashi, T., and Nishizawa, N. K. (2012). Iron uptake, translocation and regulation in higher plants. *Annu. Rev. Plant Biol.* 63, 131–152. doi: 10.1146/annurev-arplant-042811-105522
- Kolb, M., and Harms, H. (2000). Metabolism of fluoranthene in different plant cell cultures and intact plants. *Environ. Toxicol. Chem.* 19, 1304–1310. doi: 10.1002/etc.5620190512
- Kostić, O., Jarić, S., Gajić, G., Pavlović, D., Pavlović, M., Mitrović, M., et al. (2018). Pedological properties and ecological implications of substrates derived 3 and 11 years after the revegetation of lignite fly ash disposal sites in Serbia. *Catena* 163, 78–88. doi: 10.1016/j.catena.2017.12.010
- Kostić, O., Mitrović, M., Knežević, M., Jarić, S., Gajić, G., Djurdjević, L., et al. (2012). The potential of four woody species for the revegetation of fly ash deposits from the 'Nikola Tesla -A' thermoelectric plant (Obenovac, Serbia). *Arch. Biol. Sci.* 64, 145–158. doi: 10.2298/ABS1201145K
- Kuffner, M., Puschenreiter, M., Wieshammer, G., Gorfer, M., and Sessitsch, A. (2008). Rhizosphere bacteria affect growth and metal uptake of heavy metal accumulating willows. *Plant Soil* 304, 35–44. doi: 10.1007/s11104-007-9517-9
- Kuiper, E. L., Lagendijk, G. V., and Lugtenberg, B. (2004). Rhizoremediation: a beneficial plant-microbe interaction. *Mol. Plant Microbe Interact.* 17, 6–15. doi: 10.1094/MPMI.2004.17.1.6
- Kumar, A., Ahirwal, J., Maiti, S. K., and Das, R. (2015). An assessment of metal in fly ash and their translocation and bioaccumulation in perennial grasses growing at the reclaimed opencast mines. *Int. J. Env. Res.* 9, 1089–1096. doi: 10.22059/ijer.2015.996
- Kumar, A., Prasad, M. N. V., Maiti, S. K., and Favas, P. J. S. (2018). "Mycoremediation for mine site rehabilitation", in *Bio-Geotechnologies for Mine Site Rehabilitation*, eds M. N. V. Prasad, P. J. C. Favas, and S. K. Maiti (Amsterdam: Elsevier), 233–253.
- Kumari, A., Lal, B., and Rai, U. N. (2016). Assessment of native plant species for phytoremediation of heavy metals growing in the vicinity of NTPC sites, Kahagan, India. *Int. J. Phytoremediat.* 18, 592–597. doi: 10.1080/15226514.2015.1086301
- Kumari, A., Pandey, V. C., and Rai, U. N. (2013). Feasibility of fern *Thelypteris dentata* for revegetation of coal fly ash landfills. *J. Geochem. Explor.* 128, 147–152. doi: 10.1016/j.gexplo.2013.02.005
- Lal, R., Negassa, W., and Lorenz, K. (2015). Carbon sequestration in soil. *Curr. Opin. Environ. Sustain.* 15, 79–86. doi: 10.1016/j.cosust.2015.09.002
- Lanquar, V., Ramos, M. S., Lelievre, F., Barbier-Brygoo, H., Krieger-Liszczay, A., et al. (2010). Export of vacuolar manganese by AtNRAMP3 and AtNRAMP4 is required for optimal photosynthesis and growth under manganese deficiency. *Plant Physiol.* 152, 1986–1999. doi: 10.1104/pp.109.150946
- Law, B. E., Falge, E., Gu, L., Baldocchi, D. D., Bakwin, P., Berbigier, P., et al. (2002). Environmental controls over carbon dioxide and water vapor exchange of terrestrial vegetation. *Agric. For. Meteorol.* 113, 97–120. doi: 10.1016/S0168-1923(02)00104-1
- Li, L., He, Z., Pandey, G. K., Tschia, T., and Luan, S. (2002). Functional cloning and characterization of a plant efflux carrier for multidrug and heavy metal detoxification. *J. Biol. Chem.* 277, 5360–5368. doi: 10.1074/jbc.M108777200
- Li, L., Tutone, A. F., Drummond, R. S. M., Gardner, R. C., and Luan, S. (2001). A novel family of magnesium transport genes in *Arabidopsis*. *Plant Cell* 13, 2761–2775. doi: 10.1105/tpc.13.12.2761
- Li, M. S., Luo, Y. P., and Su, Z. Y. (2007). Heavy metal concentrations in soils and plant accumulation in a restored manganese mineland in Guangxi, South China. *Environ. Pollut.* 147, 168–175. doi: 10.1016/j.envpol.2006.08.006
- Liu, Z., Ge, H., Li, C., Zhao, Z., Song, F., and Hu, S. (2015). Enhanced phytoextraction of heavy metals from contaminated soil by plant co-cropping associated with PGPR. *Water Air Soil Pollut.* 226:29. doi: 10.1007/s11270-015-2304-y
- Lopareva-Pohu, A., Garçon, G., Lounès-Hadj Sahraoui, A., Pourrut, B., Debiane, D., Waterlot, C., et al. (2011). Influence of fly ash aided phytostabilisation of Pb, Cd and Zn highly contaminated soils on *Lolium perenne* and *Trifolium repens* metal transfer and physiological stress. *Environ. Pollut.* 159, 1721–1729. doi: 10.1016/j.envpol.2011.02.030
- López-Millán, A. F., Ellis, D. R., and Grusak, M. A. (2004). Identification and characterization of several new members of the ZIP family of metal ion transporters in *Medicago truncatula*. *Plant Mol. Biol.* 4, 583–596. doi: 10.1023/B:PLAN.0000038271.96019.aa
- Lopez-Orenes, A., Bueso, M., Parraga-Aguado, I. M., Calderon, A., and Ferrer, M. A. (2018). Coordinated role of soluble and cell wall bound phenols is a key feature of the metabolic adjustment in mining woody fleabane (*Dittrichia viscosa* L.) population under semi-arid conditions. *Sci. Tot. Environ.* 618, 1139–1151. doi: 10.1016/j.scitotenv.2017.09.195
- Lopez-Orenes, A., Bueso, M. C., Conesa, H. M., Calderon, A., and Ferrer, M. (2017). Seasonal changes in antioxidative/oxidative profile of mining and non-mining populations of Syrian bean-caper as determined by soil conditions. *Sci. Tot. Environ.* 575, 437–447. doi: 10.1016/j.scitotenv.2016.10.030
- Lottermoester, B. (2012). *Mine Wastes: Characterisation, Treatment and Environmental Impacts.* New York, NY: Springer.
- Lu, Y., Li, X., He, M., and Zeng, F. (2013). Behavior of native species *Arrhenatherum elatius* (Poaceae) and *Sonchus transcasicus* (Asteraceae) exposed to a heavy metal-polluted field: plant metal concentration, phytotoxicity, and detoxification responses. *Int. J. Phytoremediat.* 15, 924–937. doi: 10.1080/15226514.2012.735288
- Lu, Y. F., Lu, M., Peng, F., Wan, Y., and Liao, M. H. (2014). Remediation of polychlorinated biphenyl-contaminated soil by using a combination of ryegrass, arbuscular mycorrhizal fungi and earthworms. *Chemosphere* 106, 44–50. doi: 10.1016/j.chemosphere.2013.12.089
- Ma, J. F., Yamaji, N., Mitani, N., Xu, X. Y., Su, Y. H., McGrath, S. P., et al. (2008). Transporters of arsenite in rice and their role in arsenic accumulation in rice grain. *Proc. Natl. Acad. Sci. U.S.A.* 105, 9931–9935. doi: 10.1073/pnas.0802361105
- Ma, Y., Prasad, M. N. V., Rajkumar, M., and Freitas, H. (2011). Plant growth promoting rhizobacteria and endophytes accelerate phytoremediation of metalliferous soils. *Biotechnol. Adv.* 29, 248–258. doi: 10.1016/j.biotechadv.2010.12.001
- Macur, R. E., Wheeler, J. T., McDermott, T. R., and Inskeep, W. P. (2001). Microbial populations associated with the reduction and enhanced mobilization of arsenic in mine tailings. *Environ. Sci. Technol.* 35, 3676–3682. doi: 10.1021/es0105461
- Madejon, P., Murillo, J. M., Maranon, T., Cabrera, F., and Lopez, R. (2002). Bioaccumulation of As, Cd, Cu, Fe, and Pb in wild grasses affected by the Aznalcollar mine spill. *Sci. Tot. Environ.* 290, 105–120. doi: 10.1016/S0048-9697(01)01070-1
- Maiti, S. K. (2013). *Ecorestoration of the Coalmine Degraded Lands.* New Delhi: Springer. doi: 10.1007/978-81-322-0851-8

- Maiti, S. K., and Jaiswal, S. (2008). Bioaccumulation and translocation of metals in the natural vegetation growing on the fly ash dumps: a field study from Santal thermal power plant, West Bengal, India. *Environ. Monit. Assess.* 136, 355–370. doi: 10.1007/s10661-007-9691-5
- Marschner, H. (1995). *Mineral Nutrition of Higher Plants*. London: Academic Press.
- McCutcheon, S. C., and Schnoor, J. L. (2003). *Phytoremediation: Transformation and Control of Contaminants*. Hoboken, NJ: John Wiley and Sons, Inc. doi: 10.1002/047127304X
- Memon, A. R., and Schröder, P. (2006). Implications of metal accumulation mechanisms to phytoremediation. *Environ. Sci. Pollut. Res.* 16, 162–175. doi: 10.1007/s11356-008-0079-z
- Mertens, J., Van Nevel, L., De Schrijver, A., Piesschaert, F., Osterbean, A., Tack, F. M. G., et al. (2007). Tree species effect on the redistribution of soil metal. *Environ. Pollut.* 149, 173–181. doi: 10.1016/j.envpol.2007.01.002
- Migočka, M., and Malas, K. (2018). “Plant responses to copper: molecular and regulatory mechanisms of copper uptake, distribution and accumulation in plants,” in *Plant Micronutrient Use Efficiency. Molecular and Genomics Perspectives in Crop Plants*, eds M. A. Hossain, T. Kamiya, D. J. Burritt, L.-S. Phan Tran, and T. Fujiwara (London: Academic Press; Elsevier, Inc.), 71–86.
- Mills, A. L. (1985). “Acid mine waste drainage: microbial impact on the recovery of soil and water ecosystems,” in *Soil Reclamation Processes: Microbiological Analyses and Applications*, eds R. L. Tate and D. A. Klein (New York, NY: Marcel Dekker, Inc.), 35–82.
- Mitrović, M., Pavlović, P., Lakušić, D., Stevanović, B., Djurdjević, L., Kostić, O., et al. (2008). The potential of *Festuca rubra* and *Calamagrostis epigejos* for the revegetation on fly ash deposits. *Sci. Tot. Environ.* 72, 1090–1101. doi: 10.1016/j.scitotenv.2008.09.001
- Mittler, R. (2002). Oxidative stress, antioxidants and stress tolerance. *Trends Plant Sci.* 7, 405–410. doi: 10.1016/S1360-1385(02)02312-9
- Miwa, K., Takano, J., Omori, H., Seki, M., and Shinozaki, K. (2007). Plants tolerant of high boron levels. *Science* 318:1417. doi: 10.1126/science.1146634
- Moreira, A., Moraes, L. A. C., and dos Reis, A. R. (2018). “The molecular genetics of zinc uptake and utilization efficiency in crop plants,” in *Plant Micronutrient Use Efficiency. Molecular and Genomics Perspectives in Crop Plants*, eds M. A. Hossain, T. Kamiya, D. J. Burritt, L.-S. Phan Tran, and T. Fujiwara (London: Academic Press; Elsevier, Inc.), 87–108.
- Morgenthal, T. L., Cilliers, S. S., Kellner, K., van Hamburg, H., and Michael, M. D. (2001). The vegetation of fly ash disposal sites at hendrina power station II: floristic composition. *S. Afr. J. Bot.* 67, 520–532. doi: 10.1016/S0254-6299(15)31184-4
- Morrissey, J., Baxter, I. R., Lee, J., Li, L., Lahner, B., et al. (2009). The ferroportin metal efflux proteins function in iron and cobalt homeostasis in *Arabidopsis*. *Plant Cell* 21, 3326–3333. doi: 10.1105/tpc.109.069401
- Moynahan, O. S., Zabinski, C. A., and Gannon, J. E. (2002). Microbial community structure and carbon-utilization diversity in a mine tailings revegetation study. *Restor. Ecol.* 10, 77–87. doi: 10.1046/j.1526-100X.2002.10108.x
- Mukherjee, I., Campbell, N. H., Ash, J. S., and Connolly, E. L. (2006). Expression profiling of the *Arabidopsis* ferric chelate reductase (*FRO*) gene family reveals differential regulation by iron and copper. *Planta* 223, 1178–1190. doi: 10.1007/s00425-005-0165-0
- Mukhopadhyay, S., and Maiti, S. K. (2014). Soil CO₂ flux in grassland, afforested land and reclaimed coalmine overburden dumps: a case study. *Land Degrad. Dev.* 25, 216–227. doi: 10.1002/ldr.1161
- Mulhern, D. W., Robel, R. J., Furness, J. C., and Hensley, D. L. (1989). Vegetation of waste disposal areas at a coal-fired power plant in Kansas. *J. Environ. Qual.* 18, 285–292. doi: 10.2134/jeq1989.00472425001800030007x
- Mummey, D. L., Stahl, P. D., and Buyer, J. (2002). Soil microbiological properties 20 years after surface mine reclamation: spatial analysis of reclaimed and undisturbed sites. *Soil Biol Biochem.* 34, 1717–1725. doi: 10.1016/S0038-0717(02)00158-X
- Nadgorska-Socha, A., Ptasinski, B., and Kita, A. (2013). Heavy metal bioaccumulation and antioxidative responses in *Cardamine arenosa* and *Plantago lanceolata* leaves from mtalliferous and nin-metalliferous sites: a field study. *Ecotoxicology* 22, 1422–1434. doi: 10.1007/s10646-013-1129-y
- Nakanishi, H., Ogawa, I., Ishimaru, Y., Mori, S., and Nishizawa, N. K. (2006). Iron deficiency enhances cadmium uptake and translocation mediated by the Fe²⁺ Transporters OsIRT1 and OsIRT2 in Rice. *Soil Sci. Plant Nutr.* 52, 464–469. doi: 10.1111/j.1747-0765.2006.00055.x
- Nikolić, M., and Pavlović, J. (2018). Plant responses to iron deficiency and toxicity and iron use efficiency in plants”, in *Plant Micronutrient Use Efficiency. Molecular and Genomics Perspectives in Crop Plants*, eds M. A. Hossain, T. Kamiya, D. J. Burritt, L.-S. Phan Tran, and T. Fujiwara (London: Academic Press, Elsevier, Inc.), 55–69.
- Nikolić, N., Böcker, R., Kostić, K., Kravljanić, L. J., and Nikolić, M. (2014). Assembly processes under severe abiotic filtering: adaptation mechanisms of weed vegetation to the gradient of soil constraints. *PLoS ONE* 9:e114290. doi: 10.1371/journal.pone.0114290
- Nikolić, N., Böcker, R., and Nikolić, M. (2016). Long-term passive restoration following fluvial deposition of sulphidic copper tailings: nature filters out the solutions. *Environ. Sci. Pollut. Res.* 23, 1362–1380. doi: 10.1007/s11356-018-3272-8
- Noyd, R. K. F. L., Pfeifer, M. R., Norland, M. R., and Sadowsky, M. J. (1995). Native prairie grasses and microbial community response to reclamation of taconite ore tailing. *Can. J. Bot.* 73, 1645–1654. doi: 10.1139/b95-178
- Nozoye, T., Nagasaka, S., Kobayashi, T., Takahashi, M., Sato, Y., et al. (2011). Phytosiderophore efflux transporters are crucial for iron acquisition in graminaceous plants. *J. Biol. Chem.* 286, 5446–5454. doi: 10.1074/jbc.M110.180026
- Nwoko, C. O. (2010). Trends in phytoremediation of toxic elemental and organic pollutants. *Afr. J. Biotechnol.* 9, 6010–6016. doi: 10.5897/AJB09.061
- Olson, K. R., Al-Kaisi, M. M., Lal, R., and Lowery, B. (2014). Experimental consideration, treatments and methods in determining soil organic carbon sequestration rates. *Soil Sci. Soc. Am. J.* 78, 348–360. doi: 10.2136/sssaj2013.09.0412
- Pandey, V. C. (2012). Invasive species based efficient green technology for phytoremediation of fly ash deposits. *J. Geochem. Explor.* 123, 13–18. doi: 10.1016/j.jgexplo.2012.05.008
- Pandey, V. C. (2013). Suitability of *Ricinus communis* L. cultivation for phytoremediation of fly ash disposal sites. *Ecol. Eng.* 57, 336–341. doi: 10.1016/j.ecoleng.2013.04.054
- Pandey, V. C. (2015). Assisted phytoremediation of fly ash dumps through naturally colonized plants. *Ecol. Eng.* 82, 1–5. doi: 10.1016/j.ecoleng.2015.04.002
- Pandey, V. C., Bajpai, O., and Singh, N. (2016a). Plant regeneration potential in fly ash ecosystem. *Urban For. Urban Greening* 15, 40–44. doi: 10.1016/j.ufug.2015.11.007
- Pandey, V. C., Pandey, D. N., and Singh, N. (2015a). Sustainable phytoremediation based on naturally colonizing and economically valuable plants. *J. Clean Prod.* 86, 37–39. doi: 10.1016/j.jclepro.2014.08.030
- Pandey, V. C., Prakash, P., Bajpai, O., Kumar, A., and Singh, N. (2015b). Phytodiversity on fly ash deposits: evaluation of naturally colonized species for sustainable phytoremediation. *Environ. Sci. Pollut. Res.* 22, 2776–2787. doi: 10.1007/s11356-014-3517-0
- Pandey, V. C., Sahu, N., Behera, S. K., and Singh, N. (2016b). Carbon sequestration in fly ash dumps: Comparative assessment of three plant association. *Ecol. Eng.* 95, 198–205. doi: 10.1016/j.ecoleng.2016.06.010
- Pandey, V. C., Singh, J. S., Kumar, A., and Tewari, D. D. (2010). Accumulation of Heavy Metals by Chickpea Grown in Fly Ash Treated Soil: Effects on Antioxidants. *CLEAN Soil Air Water* 38, 1116–1123. doi: 10.1002/clen.201000178
- Pandey, V. C., Singh, K., Singh, R. P., and Singh, B. (2012). Naturally growing *Saccharum munja* L. On the fly ash lagoons: A potential ecological engineer for the revegetation and stabilization. *Ecol. Eng.* 40, 95–99. doi: 10.1016/j.ecoleng.2011.12.019
- Pandey, V. C., and Singh, N. (2014). Fast green capping on coal fly ash basins through ecological engineering. *Ecol. Eng.* 73, 671–675. doi: 10.1016/j.ecoleng.2014.09.036
- Pandey, V. C., Singh, N., Singh, R. P., and Singh, D. P. (2014). Rhizomediation potential of spontaneous grown *Typha latifolia* on fly ash basins: study from the field. *Ecol. Eng.* 71, 722–727. doi: 10.1016/j.ecoleng.2014.08.002
- Pang, Y., Li, L., Ren, F., Lu, P., Wei, P., et al. (2010). Overexpression of the tonoplast aquaporin AtTIP5;1 conferred tolerance to boron toxicity in *Arabidopsis*. *J. Genet. Genomics* 37, 389–397. doi: 10.1016/S1673-8527(09)60057-6

- Parraga-Aguado, I., Gonzales-Alcaraz, M.-N., Alvarez-Rogel, J., Jimenes-Carcelles, F. J., and Conesa, H. M. (2013). The importance of edaphic niches and pioneer plant species succession for the phytomanagement of mine tailings. *Environ. Pollut.* 176, 134–143. doi: 10.1016/j.envpol.2013.01.023
- Parraga-Aguado, I., Querejeta, J.-I., Gonzales-Alcaraz, M.-N., Jimenez-Carcelles, F. J., and Conesa, H. M. (2014). Usefulness of pioneer vegetation for the phytomanagement of metal(lod)s enriched tailings: grasses vs. shrubs vs. trees. *J. Environ. Manage.* 133, 51–58. doi: 10.1016/j.jenvman.2013.12.001
- Pavlović, P., Mitrović, M., and Djurdjević, L. (2004). An ecophysiological study of plants growing on the fly ash deposits from the “Nikola Tesla—A” thermal power station in Serbia. *Environ. Manage.* 33, 654–663. doi: 10.1007/s00267-004-2928-y
- Pedas, P., Hebborn, C. A., Schjoerring, J. K., Holm, P. E., and Husted, S. (2005). Differential capacity for high-affinity manganese uptake contributes to differences between barley genotypes in tolerance to low manganese availability. *Plant Physiol.* 139, 1411–1420. doi: 10.1104/pp.105.067561
- Persans, M. W., Neiman, K., and Salt, D. E. (2001). Functional Activity and Role of Cation-Efflux Family Members in Ni hyperaccumulation in *Thlaspi goesingense*. *Proc. Natl. Acad. Sci. U.S.A.* 98, 9995–10000. doi: 10.1073/pnas.171039798
- Petrisor, I. G., Dobrota, S., Komnitsas, K., Lazar, I., Kuperberg, J. M., and Serban, M. (2004). Artificial inoculation? Perspectives in tailings phytostabilization. *Int. J. Phytoremediat.* 6, 1–15. doi: 10.1080/16226510490439918
- Petrová, Š., Rezek, J., Soudek, P., and Vaněk, T. (2017). Preliminary study of phytoremediation of brownfield soil contaminated by PAHs. *Sci. Tot. Environ.* 599–600, 572–580. doi: 10.1016/j.scitotenv.2017.04.163
- Pilon-Smits, E., and LeDuc, D. L. (2009). Phytoremediation of selenium using transgenic plants. *Curr. Opin. Biotechnol.* 20, 207–212. doi: 10.1016/j.copbio.2009.02.001
- Pistelli, L., D’Angiolillo, F., Morelli, E., Basso, B., Rosellini, I., Posarelli, M., et al. (2017). Response of spontaneous plant from an ex-mining site of Elba island (Tuscany, Italy) to metal(loid) contamination. *Environ. Sci. Pollut. Res.* 24, 7809–7820. doi: 10.1007/s11356-017-8488-5
- Pourrut, B., Shahid, M., Dumat, C., Winterton, P., and Pinelli, E. (2011). Lead uptake, toxicity, and detoxification in plants. *Rev. Environ. Contam. T.* 213, 113–136. doi: 10.1007/978-1-4419-9860-6_4
- Prasad, M. N. V. (2006). “Stabilization, remediation, and integrated management of metal-contaminated ecosystems by grasses (Poaceae),” in *Trace Elements in the Environment (Biogeochemistry, Biotechnology, and Bioremediation)*, eds M. N. V. Prasad, K. S. Sajwan, and R. Naidu (Boca Raton, FL: CRC Taylor and Francis), 405–424.
- Pratas, J., Favas, P. J. C., D’Souza, R., Varun, M., and Pau, M. S. (2013). Phytoremediation assessment of flora tolerant to heavy metals in the contaminated soils of an abandoned Pb mine in Central Portugal. *Chemosphere* 90, 2216–2225. doi: 10.1016/j.chemosphere.2012.09.079
- Puig, N., Andreas-Colas, A., Garcia-Molina, A., and Penarrubia, L. (2007). Copper and iron homeostasis in *Arabidopsis*: responses to metal deficiencies, interaction and biotechnology applications. *Plant Cell Environ.* 30, 271–290. doi: 10.1111/j.1365-3040.2007.01642.x
- Randjelović, D., Cvetković, V., Mihailović, N., and Jovanović, S. (2014). Relationship between edaphic factors and vegetation development on copper mine wastes: a case study from Bor (Serbia, SE Europe). *Environ. Manage.* 53, 800–812. doi: 10.1007/s00267-014-0240-z
- Randjelović, D., Gajić, G., Mutić, J., Pavlović, P., Mihailović, N., and Jovanović, S. (2016). Ecological potential of *Epilobium dodonaei* Vill. For restoration of metalliferous mine waste. *Ecol. Eng.* 95, 800–810. doi: 10.1016/j.ecoleng.2016.07.015
- Raskin, I., Smith, R. D., and Salt, D. E. (1997). Phytoremediation of metals: using plants to remove pollutants from the environment. *Curr. Opin. Biotechnol.* 8, 22–26. doi: 10.1016/S0958-1669(97)80106-1
- Reeves, R. D., and Baker, A. J. M. (2000). “Metal-Accumulating Plants,” in *Phytoremediation of Toxic Metals: Using Plants to Cleanup the Environment*, eds I. Raskin and B. D. Ensley (New York, NY: John Wiley and Sons, Inc, Publications), 193–229.
- Reid, R. (2014). Understanding the boron transport network in plants. *Plant Soil.* 385, 1–13. doi: 10.1007/s11104-0412-2149-y
- Reid, R., and Fitzpatrick, K. (2009). Influence of leaf tolerance mechanisms and rain on boron toxicity in barley and wheat. *Plant Physiol.* 151, 413–420. doi: 10.1104/pp.109.141069
- Reijnders, L. (2005). Disposal, uses and treatments of combustion ashes: a review. *Resour. Conserv. Recycl.* 43, 313–336. doi: 10.1016/j.resconrec.2004.06.007
- Richards, R. T., Chambers, J. C., and Ross, C. (1998). Use of native plants on federal lands: policy and practice. *J. Range Manage.* 51, 625–632. doi: 10.2307/4003603
- Ruiz Olivares, A., Carillo-Gonzales, R., del Carmen, M.a., Gonzales-Chavez, A., and Hernandez, R. M. S. (2013). Potential of castor bean (*Ricinus communis* L.) for phytoremediation of mine tailings and oil production. *J. Environ. Manage.* 114, 316–323. doi: 10.1016/j.jenvman.2012.10.023
- Safranova, V. I., Piluzza, G., Zinovkina, N. Y., Kimeklis, A. K., Belimov, A. A., and Bullita, S. (2012). Relationship between pasture legumes, rhizobacteria, nodule bacteria in heavy metal polluted mine waste of SW Sardinia. *Symbiosis* 58, 149–159. doi: 10.1007/s13199-012-0207-x
- Salt, D. E., Smith, R. D., and Raskin, I. (1998). Phytoremediation. *Annu. Rev. Plant Physiol.* 49, 643–668. doi: 10.1146/annurev.arplant.49.1.643
- Sandermann, H. (1994). Higher Plant Metabolism of Xenobiotics: the “Green Liver” Concept. *Pharmacogenetics* 4, 225–241.
- Santos, A. E., Cruz-Ortega, R., Meza-Figueroa, D., Romero, F. M., Sanchez-Escalante, J. J., Maier, R. M., et al. (2017). Plants from the abandoned Nacoziari mine tailings: evaluation of their phytostabilization potential. *Perrf* 5:e3280. doi: 10.7717/peerj.3280
- Santos, E. S., Abreu, M. M., and Magalhaes, M. C. F. (2016). *Cistus ladanifer* phytostabilizing soils contaminated with non-essential chemical elements. *Ecol. Eng.* 94, 107–116. doi: 10.1016/j.ecoleng.2016.05.072
- Sasaki, A., Yamaji, N., Yokosho, K., and Ma, J. F. (2012). Nramp5 Is a major transporter responsible for manganese and cadmium uptake in rice. *Plant Cell* 24, 2155–2167. doi: 10.1105/tpc.112.096925
- SER (2002). *The SER Primer on Ecological Restoration*. Society for Ecological Restoration and Policy Working Group.
- Shaw, P. J. A. (1996). Role of seedbank substrates in the revegetation of fly ash and gypsum in the United Kingdom. *Restoration Ecol.* 4, 61–70. doi: 10.1111/j.1526-100X.1996.tb00108.x
- Sheng, H. A. O., Yang, Y., and Yang, Z., et al. (2010). The dynamic response of soil respiration to land-use changes in subtropical China. *Glob. Change Biol.* 16, 1107–1121. doi: 10.1111/j.1365-2486.2009.01988.x
- Shigaki, T., Pittman, J. K., and Hirschi, K. D. (2003). Manganese Specificity Determinants in the *Arabidopsis* Metal/H⁺ Antiporter CAX2. *J. Biol. Chem.* 279, 9091–9096. doi: 10.1074/jbc.M209952200
- Sinclair, S. A., and Krämer, U. (2012). The zinc homeostasis network of land plants. *Biochim. Biophys. Acta* 1823, 1553–1567. doi: 10.1016/j.bbamcr.2012.05.016
- Singh, A., Sharma, R. K., and Agrawal, S. B. (2008). Effects of fly ash incorporation on heavy metal accumulation, growth and yield responses of *Beta vulgaris* plants. *Bioresour. Technol.* 99, 7200–7207. doi: 10.1016/j.biortech.2007.12.064
- Singh, S., Parihar, P., Singh, R., Singh, V. P., and Prasad, S. M. (2016). Heavy metal tolerance in plants: role of transcriptomics, proteomics, metabolomics, and ionomics. *Front. Plant Sci.* 6:1143. doi: 10.3389/fpls.2015.01143
- Sinha, S., and Gupta, A. K. (2005). Translocation of metals from fly ash amended soil in the plant of *Sesbania cannabina* L. Ritz.: Effect on antioxidants. *Chemosphere* 61, 1204–1214. doi: 10.1016/j.chemosphere.2005.02.063
- Song, W. Y., Choi, K. S., Kim, D. Y., Geisler, M., Park, J., et al. (2010). Arabidopsis PCR2 is a zinc exporter involved in both zinc extrusion and long-distance zinc transport. *Plant Cell* 22, 2237–2252. doi: 10.1105/tpc.109.070185
- Sunkar, R., Kaplan, B., Bouche, N., Arazi, T., Dolec, D., et al. (2000). Expression of a truncated tobacco *NtCBP4* channel in transgenic plants and disruption of the homologous *Arabidopsis* *CNGC1* gene confer Pb²⁺ tolerance. *Plant J.* 24, 533–542. doi: 10.1046/j.1365-313x.2000.00901.x
- Takahashi, M., Terada, Y., Nakai, I., Nakanishi, H., Yoshimura, E., et al. (2003). Role of nicotianamine in the intracellular delivery of metals and plant reproductive development. *Plant Cell* 15, 1263–1280. doi: 10.1105/tpc.010256
- Takano, J., Kobayashi, M., Noda, Y., and Fujiwara, T. (2007). *Saccharomyces cerevisiae* Bor1p is a boron exporter and a key determinant of boron tolerance. *FEMS Microbiol. Immunol.* 267, 230 – 235. doi: 10.1111/j.1574-6968.2006.00556.x
- Tao, S., Ciu, Y. H., Xum, F. L., Li, B. G., Cao, J., Liu, W. X., et al. (2004). Polycyclic Aromatic Hydrocarbons (PAHs) in Agricultural Soil and Vegetables

- from Tianjin. *Sci. Tot. Environ.* 320, 11–24. doi: 10.1016/S0048-9697(03)00453-4
- Teng, Y., Luo, Y., Sun, X., Tu, C., Xu, L., Liu, W., et al. (2010). Influence of arbuscular mycorrhiza and rhizobium on phytoremediation by alfalfa of an agricultural soil contaminated with weathered PCBs: a field study. *Int. J. Phytoremediat.* 12, 516–533. doi: 10.1080/15226510903353120
- Thomine, S., Lelievre, F., Debarbieux, E., Schroder, J. I., and Barbier-Bygoo, H. (2003). *AtNRAMP3*, a multispecific vacuolar metal transporter involved in plant responses to iron deficiency. *Plant J.* 34, 685–695. doi: 10.1046/j.1365-3113X.2003.01760.x
- Thomine, S., Wang, R., Ward, J. M., Crawford, N. M., and Schroeder, J. I. (2000). Cadmium and iron transport by members of a plant metal transporter family in *Arabidopsis* with homology to *Nramp* genes. *Proc. Natl. Acad. Sci. U.S.A.* 97, 4991–4996. doi: 10.1073/pnas.97.9.4991
- Tokala, R. K., Strap, J. L., Jung, C. M., Crawford, D. L., Salove, H., Deobald, L. A., et al. (2002). Novel plant–microbe rhizosphere interaction involving *S. lydicus* WYEC108 and the pea plant (*Pisum sativum*). *Appl. Environ. Microbiol.* 68, 2161–71. doi: 10.1128/AEM.68.5.2161-2171.2002
- Tong, Y. P., Kneer, R., and Zhu, Y. G. (2004). Vacuolar compartmentalization: a second-generation approach to engineering plants for phytoremediation. *Trends Plant Sci.* 9, 8–9. doi: 10.1016/j.tplants.2003.11.009
- Tripathi, D. K., Singh, S., Gaur, S., Singh, S., Yadav, V., Liu, S., et al. (2018). Acquisition and homeostasis of iron in higher plants and their probable role in abiotic stress tolerance. *Front. Environ. Sci.* 5:86. doi: 10.3389/fenvs.2017.00086
- Tripathi, R. D., Srivastava, S., Mishra, S., Singh, N., Tuli, R., et al. (2007). Arsenic hazards: strategies for tolerance and remediation by plants. *Trends Biotechnol.* 25, 158–165. doi: 10.1016/j.tibtech.2007.02.003
- Turnau, K., Gawronski, S., Ryszka, P., and Zook, D. (2012). “Mycorrhizal-based phytostabilization of Zn-Pb tailings: lessons from the Trzebieonka mining works (Southern Poland),” in *Bio-geo Interactions in metal – Contaminated Soils*, eds E. Kothe and A. Varma (Berlin; Heidelberg: Springer-Verlag), 327–348.
- US Environmental Protection Agency, USEPA (2007). *Human and Ecological Risk Assessment of Coal Combustion Wastes*. USEPA.
- Utmazian, M. N. D. S., Wieshammer, G., Vega, R., and Wenzel, W. W. (2007). Hydroponic screening for metal resistance and accumulation of cadmium and zinc in twenty clones of willows and poplars. *Environ. Pollut.* 148, 155–165. doi: 10.1016/j.envpol.2006.10.045
- Van Assche, F., and Clijsters, H. (1990). Effects of metals on enzyme activity in plants. *Plant Cell Environ.* 13, 195–206. doi: 10.1111/j.1365-3040.1990.tb01304.x
- Van Rensburg, L., Morgenthal, T. L., Van Hamburg, H., and Michael, M. D. (2003). A comparative analysis of the vegetation and topsoil cover nutrient status between two similarly rehabilitated ash disposal sites. *Environmentalist* 23, 285–295. doi: 10.1023/B:ENVR.0000031359.70523.4a
- Verbruggen, N., Hermans, C., and Schat, H. (2009). Mechanisms to cope with arsenic or cadmium excess in plants. *Curr. Opin. Plant Biol.* 12, 1–9. doi: 10.1016/j.pbi.2009.05.001
- Weber, H., Chetelat, A., Reymond, P., and Farmer, E. E. (2004). Selective and powerful stress gene expression in *Arabidopsis* in response to malondialdehyde. *Plant J.* 37, 877–888. doi: 10.1111/j.1365-3113X.2003.02013.x
- Weber, J., Straczynska, S., Kocowicz, A., Gilewska, M., Bogacz, A., Gwizdz, M., et al. (2015). Properties of soil materials derived from fly ash 11 years after revegetation of post-mining excavation. *Catena* 133, 250–254. doi: 10.1016/j.catena.2015.05.016
- Wilken, A., Bock, C., Bokern, M., and Harms, H. (1995). Metabolism of Different PCB Congeners by Plant Cell Cultures. *Environ. Toxicol. Chem.* 14, 2017–2022. doi: 10.1002/etc.5620141203
- Wong, C. K. E., and Cobbett, C. D. (2009). HMA Type ATPases Are the Major Mechanism for Root to Shoot Translocation in *Arabidopsis thaliana*. *New Phytol.* 181, 71–78. doi: 10.1111/j.1469-8137.2008.02638.x
- World Coal Association (2012). *Coal Facts* 2012.
- Wu, S., Cheung, K., Luo, Y., and Wong, M. (2006). Effects of inoculation of plant growth-promoting rhizobacteria on metal uptake by *Brassica juncea*. *Environ. Pollut.* 140, 124–135. doi: 10.1016/j.envpol.2005.06.023
- Wu, Z., Liang, F., Hong, B., Young, J. C., Sussman, M. R., et al. (2002). An Endoplasmic reticulum-bound Ca^{2+}/Mn^{2+} Pump, ECA1, supports plant growth and confers tolerance to Mn^{2+} stress. *Plant Physiol.* 130, 128–137. doi: 10.1104/pp.004440
- Yang, X., Ying, F., He, Z., and Stoffella, P. J. (2005). Molecular mechanisms of heavy metal hyperaccumulation and phytoremediation. *J. Trace. Elem. Med. Bio.* 18, 339–353. doi: 10.1016/j.jtemb.2005.02.007
- Yao, Z. T., Ji, X. S., Sarker, P. K., Tang, J. H., Ge, L. Q., Xia, M. S., et al. (2015). A comprehensive review on the applications of coal fly ash. *Earth Sci. Rev.* 141, 105–121. doi: 10.1016/j.earscirev.2014.11.016
- Yoon, J., Cao, X., Zhou, Q., and and, L. Q., Ma (2006). Accumulation of Pb, Cu, and Zn in native plants growing on a contaminated Florida Site. *Sci. Tot. Environ.* 368, 456–464. doi: 10.1016/j.scitotenv.2006.01.016
- Yruela, I. (2009). Copper in plants: acquisition, transport and interactions. *Funct. Plant Biol.* 36, 409–430. doi: 10.1071/FP08288
- Zarei, M., Konig, S., Hempel, S., Nekouei, M. K., Savaghebi, G., and Buscot, F. (2008). Community structure of arbuscular mycorrhizal fungi associated to *Veronica rechingeri* at the Anguran zinc and lead mining region. *Environ. Pollut.* 156, 1277–1283. doi: 10.1016/j.envpol.2008.03.006
- Zhang, R., Liu, G., Wu, N., Gu, M., Zeng, H., Zhu, Y., et al. (2011). Adaptation of plasma membrane H^{+} ATPase and H^{+} pump to p deficiency in rice roots. *Plant Soil* 349, 3–11. doi: 10.1007/s11104-011-0774-2
- Zhang, Y., Yang, J., Wu, H., Shi, C., Zhang, C., Li, D., et al. (2014). Dynamic changes in soil and vegetation during varying ecological-recovery conditions of abandoned mines in Beijing. *Ecol. Eng.* 73, 676–683. doi: 10.1016/j.ecoleng.2014.09.113
- Zhang, Y., Zhang, Y., Liu, M., Shi, X., and Zhao, Z. (2008). Dark septate endophyte (DSE) fungi isolated from metal polluted soils: their taxonomic position, tolerance, and accumulation of heavy metals *in vitro*. *J. Microbiol.* 46, 624–632. doi: 10.1007/s12275-008-0163-6

Conflict of Interest Statement: The authors declare that the research was conducted in the absence of any commercial or financial relationships that could be construed as a potential conflict of interest.

The handling editor declared a shared affiliation, though no other collaboration, with the authors at the time of review.

Copyright © 2018 Gajić, Djurdjević, Kostić, Jarić, Mitrović and Pavlović. This is an open-access article distributed under the terms of the Creative Commons Attribution License (CC BY). The use, distribution or reproduction in other forums is permitted, provided the original author(s) and the copyright owner(s) are credited and that the original publication in this journal is cited, in accordance with accepted academic practice. No use, distribution or reproduction is permitted which does not comply with these terms.