



OPEN ACCESS

EDITED BY

Dimpna Calila Albert-Brotans,
King Faisal Specialist Hospital & Research
Centre, Saudi Arabia

REVIEWED BY

Hideo Ohuchi,
National Cerebral and Cardiovascular Center,
Japan
Flavia Fusco,
Monaldi Hospital, Italy

*CORRESPONDENCE

Anastasia D. Egorova
✉ a.egorova@lumc.nl

RECEIVED 08 November 2022

ACCEPTED 14 June 2023

PUBLISHED 26 June 2023

CITATION

Neijenhuis RML, Nederend M, Jongbloed MRM,
Kiès P, Rotmans JI, Vliegen HW, Jukema JW and
Egorova AD (2023) The potential of sodium-
glucose cotransporter 2 inhibitors for the
treatment of systemic right ventricular failure in
adults with congenital heart disease.
Front. Cardiovasc. Med. 10:1093201.
doi: 10.3389/fcvm.2023.1093201

COPYRIGHT

© 2023 Neijenhuis, Nederend, Jongbloed, Kiès,
Rotmans, Vliegen, Jukema and Egorova. This is
an open-access article distributed under the
terms of the [Creative Commons Attribution
License \(CC BY\)](https://creativecommons.org/licenses/by/4.0/). The use, distribution or
reproduction in other forums is permitted,
provided the original author(s) and the
copyright owner(s) are credited and that the
original publication in this journal is cited, in
accordance with accepted academic practice.
No use, distribution or reproduction is
permitted which does not comply with these
terms.

The potential of sodium-glucose cotransporter 2 inhibitors for the treatment of systemic right ventricular failure in adults with congenital heart disease

Ralph M. L. Neijenhuis^{1,2}, Marieke Nederend^{1,2},
Monique R. M. Jongbloed^{1,2,3}, Philippine Kiès^{1,2}, Joris I. Rotmans⁴,
Hubert W. Vliegen^{1,2}, J. Wouter Jukema^{2,5} and
Anastasia D. Egorova^{1,2*}

¹CAHAL, Center for Congenital Heart Disease Amsterdam Leiden, Leiden University Medical Center, Leiden, Netherlands, ²Department of Cardiology, Leiden University Medical Center, Leiden, Netherlands, ³Department of Anatomy & Embryology, Leiden University Medical Center, Leiden, Netherlands, ⁴Department of Internal Medicine & Nephrology, Leiden University Medical Center, Leiden, Netherlands, ⁵Netherlands Heart Institute, Utrecht, Netherlands

Aims: Given the compelling evidence on the effectiveness of sodium-glucose cotransporter 2 inhibitors (SGLT2i) in the conventional heart failure population, SGLT2i deserve exploration in systemic right ventricular (sRV) failure. The initial experience with dapagliflozin in sRV failure patients is described, with a focus on tolerability and short-term effects on clinical outcomes.

Methods and results: Ten patients (70% female, median age 50 years [46.5–52]) with symptomatic sRV failure who received dapagliflozin 10 mg per day on top of optimal medical therapy between 04–2021 and 01–2023 were included. Within 4 weeks, no significant changes in blood pressure, electrolytes, or serum glucose occurred. Creatinine and estimated glomerular filtration rate (eGFR) showed a slight decline (88 ± 17 to 97 ± 23 $\mu\text{mol/L}$, $p = 0.036$, and 72 ± 14 vs. 66 ± 16 ml/min/1.73m^2 , $p = 0.020$, respectively). At 6 months follow-up ($n = 8$), median NT-proBNP decreased significantly from 736.6 [589.3–1193.3] to 531.6 [400.8–1018] ng/L ($p = 0.012$). Creatinine and eGFR recovered to baseline levels. There were no significant changes in echocardiographic systolic sRV or left ventricular function. New York Heart Association class improved significantly in 4 out of 8 patients ($p = 0.046$), who also showed an improvement in the 6-minute walk test or bicycle exercise test performance. One female patient developed an uncomplicated urinary tract infection. No patients discontinued treatment.

Abbreviations

6MWT, 6 min walk test; ACE-I, angiotensin-converting enzyme inhibitor; ALT, alanine transaminase; ARB, angiotensin receptor blocker; ARNI, angiotensin receptor-neprilysin inhibitor; ASD, atrial septal defect; AST, aspartate transaminase; ccTGA, congenitally corrected transposition of the great arteries; CRT, cardiac resynchronization therapy; EDD, end-diastolic diameter; eGFR, estimated glomerular filtration rate; FAC, fractional area change; GGT, gamma-glutamyltransferase; GLS, global longitudinal strain; ICD, implantable cardioverter defibrillator; LV, left ventricle; MAPSE, mitral annular plane systolic excursion; MRA, mineralocorticoid receptor antagonist; NT-proBNP, N-terminal pro-B-type natriuretic peptide; NYHA, New York heart association; PAPVD, partial anomalous pulmonary venous drainage; PS, pulmonary stenosis; RV, right ventricle; SGLT2i, sodium-glucose cotransporter 2 inhibitor; sRV, systemic right ventricle; SVC Superior vena cava; TAPSE, tricuspid annular plane systolic excursion; TGA, transposition of the great arteries; TV, tricuspid valve; VSD, ventricular septal defect.

Conclusion: Dapagliflozin was well-tolerated in this small cohort of sRV failure patients. While the early results on the reduction of NT-proBNP and clinical outcome parameters are encouraging, large-scale prospective studies are warranted to thoroughly evaluate the effects of SGLT2i in the growing sRV failure population.

KEYWORDS

congenital heart disease, adult congenital heart disease (ACHD), heart failure, systemic right ventricle, sodium glucose co-transport-2 (SGLT2) inhibitors, transposition of the great arteries (TGA), congenitally corrected transposition of the great arteries

Introduction

With the improved survival of congenital heart disease patients, clinicians are frequently confronted with heart failure in this heterogeneous population. Complex congenital heart disease with a systemic right ventricle (sRV) forms a distinct entity where the morphological RV functions in the subaortic position and supports the systemic circulation. This occurs in the biventricular setting of transposition of the great arteries (TGA) after the atrial switch procedure according to Mustard or Senning, or in congenitally corrected TGA (ccTGA). Failure of the sRV is a frequent long-term complication in these patients; at 45 years of age, over 50% of TGA patients who underwent the atrial switch and up to 65% of ccTGA patients will have developed symptomatic heart failure (1, 2). Robust evidence for the use of heart failure medication in this group is lacking, and the mechanisms and treatment of sRV failure have been identified as major gaps of knowledge in the latest European and American adult congenital heart disease guidelines (3, 4).

Recently, sacubitril/valsartan (an angiotensin receptor-neprilysin inhibitor, ARNI) has been linked to reduction of N-terminal pro-B-type natriuretic peptide (NT-proBNP) levels, sRV remodeling with improvement of systolic ventricular function, improvements in 6-minute walk test (6MWT) distance, New York Heart Association (NYHA) class, and quality of life in patients with sRV failure (5, 6). These results suggest that heart failure in sRV patients may indeed be amendable to timely pharmacological intervention.

Sodium-glucose cotransporter 2 inhibitors (SGLT2i) are a relatively novel class of drugs that have quickly become a pillar in the treatment of “conventional” left ventricular heart failure, demonstrating a reduced risk of worsening heart failure, hospitalization, and cardiovascular-related death (7). Given the unmet need for evidence-based pharmacological strategies in sRV failure and the compelling evidence on the effectiveness of SGLT2i in the “conventional” heart failure population, SGLT2i have been prescribed to some patients with progressive sRV failure and insufficient response to classical pharmacological heart failure therapy, as demonstrated by Egorova et al. (2022) (8).

In this brief report, we describe the tolerability and short-term neurohumoral, echocardiographic, and clinical effects of dapagliflozin in the treatment of sRV patients with heart failure. Moreover, we discuss the rationale for and propose a future prospective evaluation of SGLT2i effects in this patient group.

Materials and methods

Participants

Adult patients with symptomatic sRV failure who were started on dapagliflozin 10 mg p.o. q.d. on top of current optimal medical therapy as part of compassionate care between April 2021 and January 2023 were reviewed for inclusion.

Inclusion criteria were: adults with an sRV in a biventricular circulation with underlying anatomy of TGA after the atrial switch procedure or ccTGA, progressive symptomatic heart failure with NYHA class \geq II, and at least moderately reduced systolic sRV function as assessed by echocardiography. Progressive symptomatic heart failure was defined as progressive symptoms attributed to heart failure and/or a deterioration in exercise performance as assessed by bicycle exercise test, accompanied by an increase in NT-proBNP levels despite the pharmacological treatment.

Study design

All patients were followed up in the outpatient clinic according to the smart technology-supported care pathway at the Leiden University Medical Center, as previously described (5). After baseline measurements, patients had an initial evaluation after 2 to 4 weeks and a structured outpatient clinic follow-up visit at 6 months.

Tolerability was evaluated by blood pressure and laboratory investigations (including creatinine, estimated glomerular filtration rate (eGFR), non-fasting plasma glucose, and electrolytes) after 2 to 4 weeks, discontinuation of treatment, and the occurrence of side effects or adverse events.

At the structured 6 months follow-up visit, the biomarker NT-proBNP was evaluated as a surrogate for neurohumoral activation status and heart failure-related prognosis. Furthermore, hemoglobin, hematocrit, electrolytes, creatinine, eGFR, aspartate transaminase (AST), alanine transaminase (ALT), gamma-glutamyltransferase (GGT), HbA1c, non-fasting serum glucose, and uric acid changes were evaluated. Systolic sRV and left ventricular (LV) function were assessed by transthoracic echocardiography as previously described (5, 9). Changes in functional outcomes were assessed by NYHA functional class, 6MWT performance, and bicycle ergometry with VO_2 max.

Ethics approval statement

All tests and procedures performed involving human participants were in accordance with the ethical standards of the institutional and/or national research committee and with the 2013 Helsinki declaration or comparable ethical standards. Appropriate local scientific board approval was obtained and the need for written informed consent was waived by the institutional medical ethical board (protocol N22.120). All patients provided consent for registration of their data and publication.

Statistical analysis

All statistical analyses were performed in SPSS version 25 (IBM Corp, Armonk, NY). The figure was generated with Graphpad Prism version 9.3.1 (GraphPad Software, San Diego, California USA). Normally distributed continuous data were displayed as mean (\pm standard deviation) and non-normally distributed continuous data were displayed as median [interquartile range Q1–Q3]. Proportions were displayed as numbers (percentages). Normality was tested with the use of the Shapiro-Wilk test. For the comparison of continuous values between time points, paired samples *t*-tests or Wilcoxon signed-rank tests were used as appropriate. For the comparison of paired ordinal data, the Wilcoxon signed-rank test was used. A *p*-value < 0.05 was considered statistically significant.

Results

Ten consecutive patients were included in this retrospective cohort. Six (60%) had underlying anatomy of TGA late after the atrial switch, and 4 (40%) had ccTGA. Seven patients (70%) were female and the median age at treatment initiation was 50 years [46.5–52]. Baseline patient characteristics are shown in **Table 1**. All patients were on at least one heart failure drug, including beta-blocker, ARNI, mineralocorticoid receptor antagonists, or diuretics before starting dapagliflozin. Nine patients (90%) were on a maximum tolerated dose of an ARNI, and 70% were on diuretics before starting dapagliflozin.

At baseline, 4 patients had severely reduced and 6 had moderately reduced systolic sRV function. Three patients had a mechanical tricuspid valve and the other 7 patients had grade II tricuspid regurgitation. The systolic subpulmonary LV function was good in 8 and mildly reduced in 2 patients.

Tolerability

After 2–4 weeks of treatment with dapagliflozin, no statistically significant changes in systolic blood pressure (107 ± 17 to 103 ± 16 mmHg, *p* = 0.509), diastolic blood pressure (67 ± 9 to 63 ± 10 mmHg, *p* = 0.406), non-fasting plasma glucose levels

TABLE 1 Baseline patient characteristics.

Baseline (n = 10)	
Age, years [IQR1-IQR3]	50 [46.5–52]
Female (%)	7 (70)
Weight, kg (\pm SD)	73.9 \pm 17.5
Body Mass Index, kg/m ² (\pm SD)	24.2 \pm 4.0
Anatomy (%)	
TGA atrial switch	6 (60)
ccTGA	4 (40)
Concomitant defects (%)	
ccTGA + VSD	1 (10)
ccTGA + VSD + monoatrium	1 (10)
TGA + VSD + PS	1 (10)
ccTGA + VSD + Ebstein-like TV	1 (10)
TGA + VSD + ASD + PS + PAPVD + persistent SVC	1 (10)
None	5 (50)
Number of cardiac surgeries [IQR1-IQR3]	1.5 [1–2]
Atrial switch procedure (%)	
Mustard	4 (40)
Senning	2 (20)
History of TV surgery (%)	
Mechanical TV	3 (30)
TV annuloplasty	2 (20)
History of atrial arrhythmia (%)	9 (90)
History of atrial ablation procedure (%)	6 (60)
Type II diabetes mellitus (on oral treatment) (%)	1 (10)
NYHA functional class (%)	
Class II	4 (40)
Class III	4 (40)
Class IV	2 (20)
Oxygen saturation at ambient air, % [IQR1-IQR3]	99 [98–99]
Systolic blood pressure, mmHg (\pm SD)	107 \pm 17
Diastolic blood pressure, mmHg (\pm SD)	67 \pm 9
eGFR, ml/min/1.73m ² (\pm SD)	72 \pm 14
Patients with a heart failure-related hospitalization in past year (%)	1 (10)
Pharmacological therapy (%)	
Beta blocker	5 (50)
ACE-i/ARB/ARNI	0/0/9 (90)
MRA	6 (60)
Diuretics (loop and/or thiazide)	7 (70)
Antiarrhythmic drugs	3 (30)
Cardiac Implantable Electronic Devices (%)	
AAIR-pacemaker	1 (10)
DDD-pacemaker	1 (10)
DDD-ICD	4 (40)
CRT-D	2 (20)
Baseline exercise performance	
6MWT distance, m [IQR1-IQR3]	604 [501–645]
VO ₂ max, mL/kg/min (\pm SD)	15.2 \pm 4.0
%-pred. VO ₂ max (\pm SD)	54 \pm 14
Baseline echocardiography	
sRV function (%)	
Moderately reduced	6 (60)
Severely reduced	4 (40)
sRV GLS, % (\pm SD)	–10.5 \pm 3.3
sRV FAC, % (\pm SD)	19.1 \pm 6.0
TAPSE, mm (\pm SD)	12 \pm 2

(Continued)

TABLE 1 Continued

Tricuspid regurgitation, grade (%)	
Grade I or less	3 (30) ^s
Grade II	7 (70)
Subpulmonary LV function (%)	
Good	8 (80)
Mildly reduced	2 (20)

Proportions are presented as n (%). Values are presented as mean (± standard deviation) or median [IQR1-IQR3] as appropriate. 6MWT, 6-minute walk test; ACE-i, angiotensin-converting enzyme inhibitor; ARB, angiotensin receptor blocker; ARNI, angiotensin receptor-neprilysin inhibitor; ASD, atrial septal defect; ccTGA, congenitally corrected transposition of the great arteries; CRT, cardiac resynchronization therapy; eGFR, estimated glomerular filtration rate; FAC, fractional area change; GLS, global longitudinal strain; ICD, implantable cardioverter defibrillator; LV, left ventricle; MRA, mineralocorticoid receptor antagonist; NYHA, New York Heart Association; PAPVD, partial anomalous pulmonary venous drainage; PS, pulmonary stenosis; sRV, systemic right ventricle; SVC, superior vena cava; TAPSE, tricuspid annular plane systolic excursion; TGA, transposition of the great arteries; TV, tricuspid valve; VSD, ventricular septal defect.

^sThe three patients with grade I or less tricuspid regurgitation at baseline all had a mechanical TV.

(4.9 [4.4–6.4] to 5.0 [4.3–7.1] mmol/L, $p=0.889$), or electrolytes were observed. Creatinine increased (88 ± 17 to 97 ± 23 $\mu\text{mol/L}$, $p=0.036$) and eGFR decreased (72 ± 14 vs. 66 ± 16 ml/min/1.73m², $p=0.020$) significantly. A 60-year-old female patient developed a urinary tract infection which was treated with oral antibiotics. No other side effects or adverse events were observed and none of the patients discontinued the treatment.

One heart failure-related hospitalization occurred during follow-up; patient 1 had a short admission (<24 h) after 4 months with mild congestion which resolved after a single intravenous administration of loop diuretics. Additionally, this patient required escalation in the dose of spironolactone and bumetanide despite treatment with dapagliflozin and was listed for heart transplantation. In the 6 months preceding SGLT2i therapy, this patient experienced 4 heart failure-related admissions. The dose of furosemide was reduced in patient 2 and

triamterene could be stopped in patient 3. No concurrent changes in medical therapy occurred in the other 7 patients during follow-up.

Short-term effects of SGLT2i

Eight patients (80%) had a 6 months follow-up visit. From baseline to 6 months, median NT-proBNP decreased significantly from 736.6 [589.3–1,193.3] to 531.6 [400.8–1,018] ng/L ($p=0.012$) (Figure 1). Creatinine (85 [74–100] to 77 [67–108] $\mu\text{mol/L}$, $p=0.575$) and eGFR (71 ± 14 to 71 ± 19 ml/min/1.73m², $p=0.539$) recovered after the initial deterioration in renal function, with no significant change from baseline to 6 months (Table 2). There were no significant changes in body weight (73.9 ± 17.5 to 71.0 ± 16.9 kg, $p=0.957$) or body mass index (mean 24.2 ± 4.0 to 24.1 ± 4.3 kg/m², $p=0.908$). There were no statistically significant changes in systolic sRV or LV function and dimensions as assessed with transthoracic echocardiography from baseline to 6 months follow-up (Table 3). Changes in functional outcome parameters from baseline to 6 months are shown in Table 4. A significant improvement in NYHA class was observed in 4 out of 8 patients ($p=0.046$), and no patients experienced a clinical deterioration. These 4 patients also showed an improvement in either 6MWT distance or exercise test performance, although these changes were not statistically significant.

Discussion

Dapagliflozin was well-tolerated in this cohort of 10 patients with symptomatic sRV failure: (1) blood pressure, plasma glucose, and electrolytes remained stable while renal function recovered to baseline levels after an initial dip, (2) no patients discontinued treatment, (3) no relevant side effects were

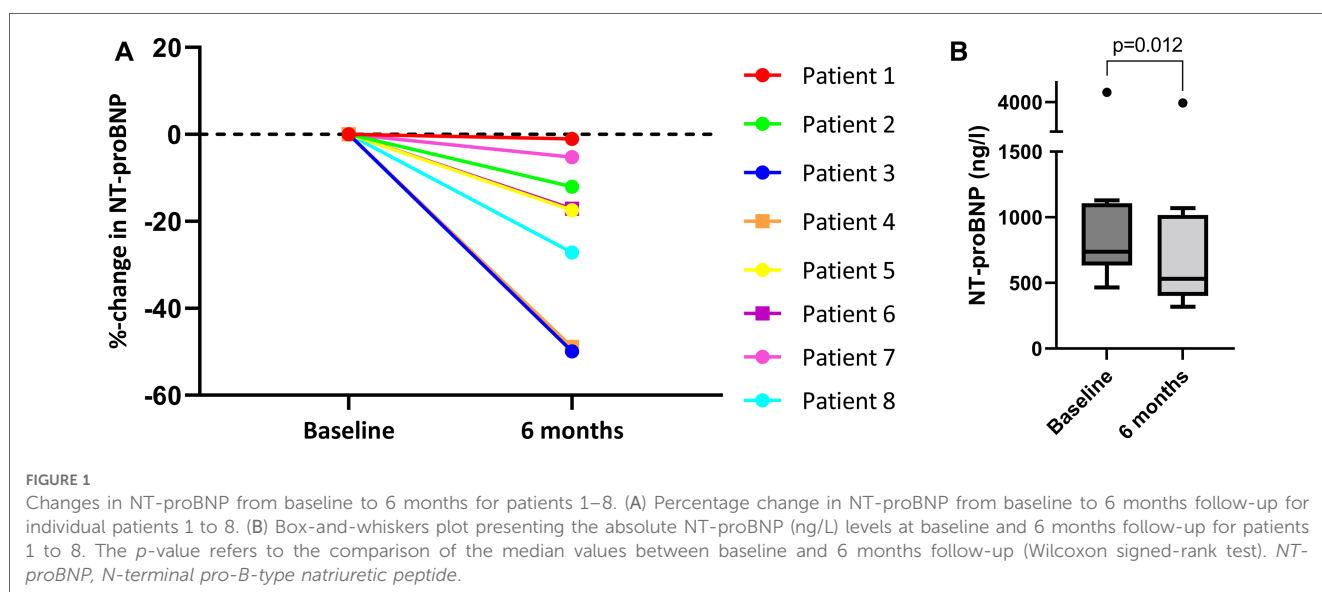


TABLE 2 Changes in laboratory parameters from baseline to 6 months for patients 1–8.

	Baseline	6 months	p-value
NT-proBNP, ng/L [IQR1-IQR3]	736.6 [589.3–1,193.3]	531.6 [400.8–1,018]	0.012
Hemoglobin, mmol/L (± SD)	8.5 ± 1.4	8.3 ± 0.8	0.635
Hematocrit, L/L (± SD)	0.416 ± 0.063	0.408 ± 0.032	0.634
Sodium, mmol/L (± SD)	140 ± 3	139 ± 2	0.044
Potassium, mmol/L (± SD)	4.2 ± 0.3	4.3 ± 0.7	0.441
Creatinine, μmol/L [IQR1-IQR3]	85 [74–100]	77 [67–108]	0.575
eGFR, mL/min/1.73m ² (± SD)	71 ± 14	71 ± 19	0.539
AST, U/L [IQR1-IQR3]	29 [23–38]	30 [22–38]	0.799
ALT, U/L [IQR1-IQR3]	30 [22–66]	30 [22–37]	0.401
GGT, U/L [IQR1-IQR3]	50 [28–173]	53 [31–93]	0.138
HbA1c, mmol/mol [IQR1-IQR3]	41.9 [38.3–44.0]	42.3 [37.9–42.9]	0.128
Serum glucose (non-fasted), mmol/L [IQR1-IQR3]	4.9 [4.4–6.4]	5.1 [4.6–6.2]	0.833
Uric acid, mmol/L (± SD)	0.45 ± 0.18	0.32 ± 0.14	0.088

Changes in laboratory parameters from baseline to 6 months follow-up. Values are presented as mean (± standard deviation) or median [IQR1-IQR3]. Paired t-test or Wilcoxon signed-rank tests are performed as appropriate. AST, aspartate transaminase; ALT, alanine transaminase; eGFR, estimated glomerular filtration rate; GGT, gamma-glutamyltransferase; NT-proBNP, N-terminal pro-B-type natriuretic peptide.

TABLE 3 Echocardiographic changes from baseline to 6 months for patients 1–8.

	Baseline	6 months	p-value
sRV GLS, % [IQR1-IQR3]	-11.2 [-12.8–-8.2]	-11.4 [-12.5–-10.2]	0.889
sRV FAC, % (± SD)	19.1 ± 6.0	19.0 ± 7.1	0.707
sRV s' [IQR1-IQR3]	4.9 [4.4–6.0]	5.5 [4.0–6.5]	0.665
TAPSE, mm (± SD)	12.0 ± 1.9	12.6 ± 1.3	0.325
sRV EDD, mm (± SD)	55.0 ± 5.7	55.8 ± 6.3	0.897
Tricuspid regurgitation, grade [IQR1-IQR3]	2 [1–2]	2 [1–2]	1.000
LV GLS, % (± SD)	-22.4 ± 7.0	-20.9 ± 3.8	0.482
MAPSE, mm [IQR1-IQR3]	18 [17–22.5]	19.7 [16.5–22.8]	0.611
Mitral regurgitation, grade [IQR1-IQR3]	1 [1–2]	1 [1–2]	1.000

Changes in echocardiographic parameters from baseline to 6 months follow-up. Values are presented as mean (± standard deviation) or median [IQR1-IQR3]. Overall changes are not statistically significant, as assessed with paired t-test or Wilcoxon-signed-rank test as appropriate. FAC, fractional area change; GLS, global longitudinal strain; LV, left ventricle; MAPSE, mitral annular plane systolic excursion; sRV, systemic right ventricle; EDD, end-diastolic diameter; TAPSE, tricuspid annular plane systolic excursion.

observed, and (4) no unexpected deterioration of heart failure was observed.

In the 8 patients with a structured 6 months follow-up visit, we observed a significant median NT-proBNP reduction of 17.3% [-43.5–-6.9]. To compare, a 45% reduction in NT-proBNP levels was documented at 6 months in sRV failure patients treated with sacubitril/valsartan (5). While the reduction in NT-proBNP was greater in this larger cohort of sRV failure patients on sacubitril/valsartan, 9 out of 10 patients in the current study had progressive heart failure despite treatment with

sacubitril/valsartan in maximally tolerated dose, suggesting that SGLT2i might be of additional value “on top of” sacubitril/valsartan. The one patient who was not on sacubitril/valsartan at baseline did not tolerate it previously. Sacubitril/valsartan was not recently stopped (<6 months) and also not started during the follow-up of the current study period.

A comparable magnitude of NT-proBNP reduction was documented in the large randomized controlled trials investigating SGLT2i in conventional left ventricular heart failure with reduced ejection fraction. In the DAPA-HF and EMPEROR-reduced trials, median NT-proBNP reductions of 13.7% and 12.9%, respectively were reported (10, 11). Whether this similar reduction in NT-proBNP levels will also be associated with a comparable improvement in clinical outcomes and mortality remains to be investigated.

NT-proBNP is released by both the ventricular and atrial myocytes as a response to elevated cardiac wall stress, and has prognostic value in sRV failure patients specifically; a decrease in NT-proBNP has been correlated with improved clinical status, reduced risk of hospitalization, and lower mortality in sRV failure patients (12). Elevated NT-proBNP levels may thus indicate the presence of pressure and/or volume overload associated with heart failure in sRV patients (13). The actual mechanisms of SGLT2i contributing to the beneficial effects observed in the general heart failure population are not yet fully understood. Potential mechanisms that could target the elevated wall stress and thus contribute to the decrease in NT-proBNP levels we observed are; (1) blood pressure lowering and stimulation of natriuresis and diuresis, thereby lowering cardiac afterload, (2) inhibition of sympathetic nervous system activation, and (3) improvement of vascular smooth muscle and endothelial function, decreasing vascular resistance and inducing direct vasorelaxation (14).

Regarding the short-term outcomes, a significant improvement in NYHA class was observed. Nevertheless, there were no significant changes in any of the exercise parameters nor in the echocardiographic parameters assessing systolic ventricular function. This might be attributed to the limited cohort, small effect size, or the variability in the echocardiographic assessment of sRV function.

Another potential advantage of SGLT2i is the practical ease of implementation and adherence when compared to other heart failure drugs, as the target dose and starting dose are identical and can be implemented over a wide range of renal functions. When comparing SGLT2i to other drugs with more profound anti-hypertensive effects like ARNIs or beta blockers, SGLT2i might prove to be especially beneficial in relatively young adult congenital heart disease patients, in whom hypotension rather than hypertension usually is a limiting factor.

The initial results seem encouraging and demonstrate that SGLT2i treatment is feasible and safe, even in advanced sRV failure patients. Although no firm conclusions can be drawn regarding the clinical effects, the current data is promising and worthy of further validation in a larger prospective setting, particularly when considering the growing unmet need for adequate heart failure treatment in the adult congenital heart

TABLE 4 Changes in NYHA class and exercise capacity from baseline to 6 months for patients 1–8.

Patient	NYHA class at baseline	NYHA class at 6 months ($p = 0.046$)	Δ 6MWT (m) ($p = 0.345$)	Δ VO ₂ max (mL/kg/min) ($p = 0.499$)	Δ %-pred. VO ₂ max ($p = 0.386$)	Δ exercise capacity (W) ($p = 0.793$)	Δ %-pred. exercise capacity ($p = 0.723$)
1	IV	III	NA	+ 6.1	+23	+43	+28
2	III	II	+34	−0.9	−1	+0	+0
3	III	II	+75	+2.1	+10	+20	+16
4	IV	III	−82	+1.2	+4	+1	+3
5	III	III	−65	−3.0	−13	−20	−19
6	III	III	NA	−0.3	+3	+1	+2
7	II	II	−129	0	+3	−28	−16
8	II	II	−7	+0.4	−2	0	+2

Absolute change from baseline to 6 months follow-up (Δ). Changes are not statistically significant, as is indicated by the p -values and assessed with paired t-test or Wilcoxon-signed-rank test as appropriate. NYHA, New York Heart Association; 6MWT, 6 min walking test.

disease population. Therefore, we call for international collaboration and the initiation of a prospective trial to study the effects of SGLT2i as a promising treatment option for sRV failure.

version to be published: RN, MN, MJ, PK, JR, HV, JJ, AE. All authors contributed to the article and approved the submitted version.

Data availability statement

The original contributions presented in the study are included in the article. Requests to access these datasets should be directed to Anastasia Egorova, a.egorova@lumc.nl

Funding

This work was funded by the Leiden University Medical Center research council Cardio-Vascular cluster Themes for Innovation funding 2021.

Ethics statement

The studies involving human participants were reviewed and approved by Leiden University Medical Center (LUMC) Medical Ethical Committee. Written informed consent for participation was not required for this study in accordance with the national legislation and the institutional requirements.

Conflict of interest

The authors declare that the research was conducted in the absence of any commercial or financial relationships that could be construed as a potential conflict of interest.

Author contributions

Conception or design of work: RN, MN, MJ, AE; Data collection: RN, MN; Data analysis and interpretation: RN, AE; Drafting the article: RN, AE; Critical revision of the article: MN, MJ, PK, JR, HV, JJ, AE; Final approval of the

Publisher's note

All claims expressed in this article are solely those of the authors and do not necessarily represent those of their affiliated organizations, or those of the publisher, the editors and the reviewers. Any product that may be evaluated in this article, or claim that may be made by its manufacturer, is not guaranteed or endorsed by the publisher.

References

- Woudstra OI, Zandstra TE, Vogel RF, van Dijk APJ, Vliegen HW, Kiès P, et al. Clinical course long after atrial switch: a novel risk score for Major clinical events. *J Am Heart Assoc.* (2021) 10(5):e018565. doi: 10.1161/JAHA.120.018565
- Zaragoza-Macias E, Zaidi AN, Dendukuri N, Marelli A. Medical therapy for systemic right ventricles: a systematic review (part 1) for the 2018 AHA/ACC guideline for the management of adults with congenital heart disease: a report of the American college of cardiology/American heart association task force on clinical practice guidelines. *J Am Coll Cardiol.* (2019) 73(12):1564–78. doi: 10.1016/j.jacc.2018.08.1030
- Baumgartner H, De Backer J, Babu-Narayan SV, Budts W, Chessa M, Diller GP, et al. 2020 ESC guidelines for the management of adult congenital heart disease. *Eur Heart J.* (2021) 42(6):563–645. doi: 10.1093/eurheartj/ehaa554
- Stout KK, Daniels CJ, Aboulhosn JA, Bozkurt B, Broberg CS, Colman JM, et al. 2018 AHA/ACC guideline for the management of adults with congenital heart disease: executive summary: a report of the American college of cardiology/American heart association task force on clinical practice guidelines. *Circulation.* (2019) 139(14): e637–e97. doi: 10.1161/cir.0000000000000602
- Zandstra TE, Nederend M, Jongbloed MRM, Kiès P, Vliegen HW, Bouma BJ, et al. Sacubitril/valsartan in the treatment of systemic right ventricular failure. *Heart.* (2021) 107(21):1725–30. doi: 10.1136/heartjnl-2020-318074
- Fusco F, Scognamiglio G, Merola A, Iannuzzi A, Palma M, Grimaldi N, et al. Safety and efficacy of sacubitril/valsartan in patients with a failing systemic right ventricle: a prospective single-center study. *Circ Heart Fail.* (2023) 16(2):e009848. doi: 10.1161/circheartfailure.122.009848

7. McDonagh TA, Metra M, Adamo M, Gardner RS, Baumbach A, Böhm M, et al. 2021 ESC guidelines for the diagnosis and treatment of acute and chronic heart failure. *Eur Heart J.* (2021) 42(36):3599–726. doi: 10.1093/eurheartj/ehab368
8. Egorova AD, Nederend M, Tops LF, Vliegen HW, Jongbloed MRM, Kiès P. The first experience with sodium-glucose cotransporter 2 inhibitor for the treatment of systemic right ventricular failure. *ESC Heart Fail.* (2022) 9(3):2007–12. doi: 10.1002/ehf2.13871
9. Zandstra TE, Jongbloed MRM, Widya RL, Ten Harkel ADJ, Holman ER, Mertens BJA, et al. Validation and feasibility of echocardiographic assessment of systemic right ventricular function: serial correlation with MRI. *Front Cardiovasc Med.* (2021) 8:644193. doi: 10.3389/fcvm.2021.644193
10. McMurray JJV, Solomon SD, Inzucchi SE, Køber L, Kosiborod MN, Martinez FA, et al. Dapagliflozin in patients with heart failure and reduced ejection fraction. *N Engl J Med.* (2019) 381(21):1995–2008. doi: 10.1056/NEJMoa1911303
11. Packer M, Anker SD, Butler J, Filippatos G, Pocock SJ, Carson P, et al. Cardiovascular and renal outcomes with empagliflozin in heart failure. *N Engl J Med.* (2020) 383(15):1413–24. doi: 10.1056/NEJMoa2022190
12. Westhoff-Bleck M, Podewski E, Tutarel O, Wenzel D, Cappello C, Bertram H, et al. Prognostic value of NT-proBNP in patients with systemic morphological right ventricles: a single-centre experience. *Int J Cardiol.* (2013) 169(6):433–8. doi: 10.1016/j.ijcard.2013.10.014
13. Popelová JR, Tomková M, Tomek J. NT-proBNP predicts mortality in adults with transposition of the great arteries late after mustard or senning correction. *Congenit Heart Dis.* (2017) 12(4):448–57. doi: 10.1111/chd.12466
14. Lopaschuk GD, Verma S. Mechanisms of cardiovascular benefits of sodium glucose co-transporter 2 (SGLT2) inhibitors: a state-of-the-art review. *JACC Basic Transl Sci.* (2020) 5(6):632–44. doi: 10.1016/j.jacbts.2020.02.004