



Helicobacter pylori Type IV Secretion System and Its Adhesin Subunit, CagL, Mediate Potent Inflammatory Responses in Primary Human Endothelial Cells

OPEN ACCESS

Edited by:

Matthew C. Wolfgang,
University of North Carolina at Chapel Hill, United States

Reviewed by:

Lee-Ann H. Allen,
University of Iowa, United States
Eric J. Sundberg,
Institute of Human Virology,
United States

*Correspondence:

Terry Kwok
terry.kwok@monash.edu

† Present Address:

Mona Tafreshi,
Illumina Australia Pty Ltd, Scoresby,
VIC, Australia
Jyeswei Guan,
Department Biochemistry, Yong Loo
Lin School of Medicine, National
University of Singapore, Singapore,
Singapore
Yue Xin,
Centenary Institute, Structural Biology
Group, Royal Prince Alfred Hospital,
Camperdown, NSW, Australia

Received: 02 April 2017

Accepted: 16 January 2018

Published: 06 February 2018

Citation:

Tafreshi M, Guan J, Gorrell RJ, Chew N, Xin Y, Deswaerte V, Rohde M, Daly RJ, Peek RM Jr, Jenkins BJ, Davies EM and Kwok T (2018) *Helicobacter pylori* Type IV Secretion System and Its Adhesin Subunit, CagL, Mediate Potent Inflammatory Responses in Primary Human Endothelial Cells. *Front. Cell. Infect. Microbiol.* 8:22. doi: 10.3389/fcimb.2018.00022

Mona Tafreshi^{1†}, Jyeswei Guan^{1†}, Rebecca J. Gorrell^{1,2,3}, Nicole Chew², Yue Xin^{1†}, Virginie Deswaerte^{4,5}, Manfred Rohde⁶, Roger J. Daly², Richard M. Peek Jr.⁷, Brendan J. Jenkins^{4,5}, Elizabeth M. Davies² and Terry Kwok^{1,2,3*}

¹ Infection & Immunity Program, Biomedicine Discovery Institute and Department of Biochemistry and Molecular Biology, Monash University, Clayton, VIC, Australia, ² Cancer Program, Biomedicine Discovery Institute and Department of Biochemistry and Molecular Biology, Monash University, Clayton, VIC, Australia, ³ Infection & Immunity Program, Biomedicine Discovery Institute and Department of Microbiology, Monash University, Clayton, VIC, Australia, ⁴ Centre for Innate Immunity and Infectious Diseases, Hudson Institute of Medical Research, Clayton, VIC, Australia, ⁵ Department of Molecular Translational Science, School of Clinical Sciences, Monash University, Clayton, VIC, Australia, ⁶ Helmholtz Centre for Infection Research, Central Facility for Microscopy, Braunschweig, Germany, ⁷ Division of Gastroenterology, Vanderbilt University School of Medicine, Nashville, TN, United States

The Gram-negative bacterium, *Helicobacter pylori*, causes chronic gastritis, peptic ulcers, and gastric cancer in humans. Although the gastric epithelium is the primary site of *H. pylori* colonization, *H. pylori* can gain access to deeper tissues. Concurring with this notion, *H. pylori* has been found in the vicinity of endothelial cells in gastric submucosa. Endothelial cells play crucial roles in innate immune response, wound healing and tumorigenesis. This study examines the molecular mechanisms by which *H. pylori* interacts with and triggers inflammatory responses in endothelial cells. We observed that *H. pylori* infection of primary human endothelial cells stimulated secretion of the key inflammatory cytokines, interleukin-6 (IL-6) and interleukin-8 (IL-8). In particular, IL-8, a potent chemokine and angiogenic factor, was secreted by *H. pylori*-infected endothelial cells to levels ~10- to 20-fold higher than that typically observed in *H. pylori*-infected gastric epithelial cells. These inflammatory responses were triggered by the *H. pylori* type IV secretion system (T4SS) and the T4SS-associated adhesin CagL, but not the translocation substrate CagA. Moreover, in contrast to integrin $\alpha_5\beta_1$ playing an essential role in IL-8 induction by *H. pylori* upon infection of gastric epithelial cells, both integrin $\alpha_5\beta_1$ and integrin $\alpha_v\beta_3$ were dispensable for IL-8 induction in *H. pylori*-infected endothelial cells. However, epidermal growth factor receptor (EGFR) is crucial for mediating the potent *H. pylori*-induced IL-8 response in endothelial cells. This study reveals a novel mechanism by which the *H. pylori* T4SS and its adhesin subunit, CagL, may contribute to *H. pylori* pathogenesis by stimulating the endothelial innate immune responses, while highlighting EGFR as a potential therapeutic target for controlling *H. pylori*-induced inflammation.

Keywords: *Helicobacter*, type IV secretion, interleukin-8, endothelial cells, inflammation, CagL, HUVECs

INTRODUCTION

The microaerophilic Gram-negative bacterium, *Helicobacter pylori*, causes chronic gastritis, peptic ulcers, and gastric cancer in humans (Kusters et al., 2006). Almost all individuals infected by *H. pylori* develop active chronic inflammation in the stomach, characterized by infiltration of neutrophils and macrophages into the gastric mucosa (Sipponen, 1993). This inflammation is driven by various cytokines and chemokines secreted during *H. pylori* infection, including interleukin-1 β , tumor necrosis factor alpha (TNF- α), IL-8, and IL-6. In particular, the level of IL-8, a potent angiogenic factor and chemoattractant, is significantly elevated in the gastric mucosa of *H. pylori*-infected patients (Crabtree, 1996; Naumann and Crabtree, 2004). The mechanism by which *H. pylori* stimulates IL-8 induction in gastric epithelial cells has been intensely studied. The *H. pylori* *cag* type IV secretion system (T4SS), a multi-component secretion machinery encoded by a 40-kb genetic locus named *cag* pathogenicity island (*cagPAI*), is one of the strongest known IL-8 inducing virulence factors of *H. pylori* (Fischer, 2011). Upon *H. pylori* infection of gastric epithelial cells, the *cag* T4SS stimulates IL-8 release via a multipronged mechanism that involves both the T4SS translocation substrate, CagA, and the putative T4SS adhesin and minor pilin, CagL (Gorrell et al., 2013). CagA, upon translocation by the T4SS into gastric epithelial cells, stimulates IL-8 induction via activation of the tyrosine phosphatase SHP2, mitogen-activated protein (MAP) kinase cascade and nuclear factor kappa B (NF- κ B) (Brandt et al., 2005), whereas CagL triggers IL-8 induction by activating Src tyrosine kinase, MAP kinase cascade, and NF- κ B through direct interaction with the host receptor integrin β_1 via an arginine-glycine-aspartate (RGD) motif (Gorrell et al., 2013). The *cag* T4SS has also been shown to contribute to IL-6 induction in gastric epithelial cells infected with *H. pylori* (Lu et al., 2005), but the corresponding roles of CagL and CagA remain to be examined.

Although the luminal surface of the gastric epithelium is the primary site of colonization by *H. pylori*, an increasing number of studies suggest that *H. pylori* can gain access to gastric submucosa (Amieva et al., 2003; Semino-Mora et al., 2003; Aspholm et al., 2006; Necchi et al., 2007; Ito et al., 2008). In line with this notion, *H. pylori* has been observed in the vicinity of endothelial cells and even within blood vessels in the gastric submucosa (Aspholm et al., 2006; Necchi et al., 2007). Furthermore, there has been evidence showing that *H. pylori* triggers IL-8 and IL-6 induction upon infection of human endothelial cells (Ding et al., 1997; Innocenti et al., 2002) but the molecular mechanisms involved remained unclear, with no clear correlation observed between *cagPAI* status and the extent of IL-8 or IL-6 induction in primary human umbilical vein endothelial cells (HUVECs) (Innocenti et al., 2002). In this current study we used HUVECs and the human umbilical vein endothelial cell line, EA.Hy926, as host cell models infected with a series of isogenic *H. pylori* *cag* T4SS mutants to elucidate the molecular mechanisms by which *H. pylori* stimulates IL-8 and IL-6 secretion in human endothelial cells.

MATERIALS AND METHODS

Cell Culture

AGS cells were maintained in RPMI (Life Technologies) supplemented with 10% (v/v) heat-inactivated fetal bovine serum (FBS) (Life Technologies). The human umbilical vein cell line, EA.Hy926 (ATCC[®] CRL-2922), were maintained as non-polarized monolayers in Dulbecco's modified Eagle's medium (DMEM) (Life Technologies) supplemented with 4.5 g/L D-glucose, L-glutamine, and 110 mg/L sodium pyruvate (Invitrogen), 10% heat-inactivated FBS, and HAT supplement (Sigma-Aldrich). HUVECs (Catalog number C2519A; Lonza) were maintained as non-polarized monolayers in Endothelial Basal Medium supplemented to Endothelial Growth Medium using the EBM-2[™] BulletKit[™] (Lonza). Routinely cultured cells and experiments were all maintained at 37°C in a humidified 5% CO₂ incubator. For experiments where serum-starvation or serum-free conditions were required, cells were grown in culture media without growth factors, additives, or heat-inactivated FBS.

Bacterial Strains and Culture Conditions

Construction of the various isogenic mutants of *H. pylori* strain P12 has been described in detail previously (Gorrell et al., 2013). *H. pylori* strain 7.13 and its isogenic Δ *cagA* mutant have also been described elsewhere (Franco et al., 2005). *H. pylori* strains were routinely cultured on GC agar (Oxoid) supplemented with 10% (v/v) horse serum (Invitrogen), vitamin mix, vancomycin, and nystatin as described previously (Kwok et al., 2002). For infection experiments, GC agar-cultured *H. pylori* was used to inoculate Heart Infusion (HI) broth (Oxoid) supplemented with 10% (v/v) FBS, 1% (v/v) vitamin mix and 10 μ g/ml vancomycin (Sigma-Aldrich). Kanamycin sulfate (15 μ g/ml) or chloramphenicol (4 μ g/ml) was added as required for the culture of *H. pylori* mutant strains. All *H. pylori* cultures were grown at 37°C under microaerophilic conditions (CampyGen[™] system; Oxoid); liquid cultures were incubated with gentle agitation at 120 rpm to an O.D._{550nm} of 0.8–1.2 prior to use in infections.

Chemical and Antibodies

The inhibitors, AG1478 and BMS-345541, were purchased from Merck KGaA. The antibodies used are: PY99 phosphotyrosine-specific mouse monoclonal antibodies (mAb), anti-CagA rabbit polyclonal antibody, and NF- κ B p65-specific mouse mAb F-6 (Santa Cruz Biotechnology); anti-EGFR rabbit mAb D38B1 (Cell Signaling); anti- α -tubulin mouse mAb B-5-1-2 (Sigma-Aldrich); goat anti-*H. pylori* antiserum [Kirkegaard and Perry Laboratories (KPL)]; integrin $\alpha_v\beta_3$ -specific mouse mAb LM609 (Millipore); rat mAb AIIB2 (specific for integrin β_1) (Hall et al., 1990) and BIIG2 (specific for integrin α_5), developed by C. H. Damsky were obtained as conditioned culture media ultrafiltration concentrates from the Developmental Studies Hybridoma Bank developed under the auspices of the NICHD and maintained by The University of Iowa, Department of Biology, Iowa City, IA 52242. Before use in infection cultures, AIIB2 and BIIG2 concentrates were dialysed against PBS to remove residual antibiotics as described previously (Gorrell et al., 2013).

Production and Heat-Inactivation of Recombinant CagL

Wild-type or mutant recombinant CagL protein (rCagL), expressed as a fusion protein with a C-terminal hexahistidine-tag, was purified as described previously (Gorrell et al., 2013). Heat-denatured CagL (DN rCagL) was prepared by heating CagL in 50 mM Tris-HCl (pH 8), 100 mM NaCl and 25 mM KCl at 95°C for 30 min.

Co-culture of Cells with *H. pylori* or Recombinant CagL

For *H. pylori* infection experiments, all cell-lines were seeded in 24-well plates at 3×10^4 cells per well, and grown for 48 h to achieve ~70% confluence prior to treatment and/or inoculation. For infection experiments, cells were inoculated with either sterile bacterial media alone (HI), or broth-cultured *H. pylori* strains at a multiplicity of infection of 0.1, 1, 10, 30, or 100 colony-forming units per cell, as described for each experiment. For inhibitor studies, cells were washed with PBS and pretreated with small molecule inhibitors or antibodies for 30 min prior to *H. pylori* infection. Spent culture medium was collected at 6 and 24 h-post-infection (hpi) for subsequent analysis by IL-8 or IL-6 ELISA; cell lysates for immunoblot analysis were prepared using Laemmli buffer as described previously (Gorrell et al., 2013). For rCagL treatment, EA-Hy926 monolayers were washed with PBS before adding rCagL^{WT}, rCagL^{RGA}, or DN rCagL^{WT} diluted in serum-free growth medium; spent culture medium was collected after 24 h incubation.

Cell Attachment Assay

The assay was performed as described previously (Kwok et al., 2007) with the following minor modifications. Microtitre plates were coated with PBS alone, or 50 µg/ml of bovine fibronectin (Sigma) or human recombinant vitronectin (Gibco) in PBS at 4°C overnight. Single cell suspensions of HUVECs or AGS were pre-treated with PBS or 2 µg/ml integrin function-blocking antibodies (LM609 or a 1:1 mixture of AIIB2 and BIIG2), for 30 min at 37°C in humidified atmosphere with 5% CO₂. Treated cells were seeded into the coated microtiter plates at 4×10^4 cell/well, incubated for 2 h, and the wells washed with warm growth media without FBS to remove unbound cells. Attached cells were fixed with 3.8% (w/v) paraformaldehyde (PFA) before visualization using an Olympus CX22 brightfield microscope at 40 × magnification.

Assessment of Cell Viability by Trypan Blue Exclusion

To assess the effect of AG1478 on cell viability, HUVEC monolayers (seeded at 6×10^4 /well in 24-well plates and incubated for 2 days) were incubated with AG1478 at various concentrations (0.5, 2, 10, or 20 µM) for 24 h. Cells were washed twice with warm growth media, trypsinized and then diluted in 0.4% (w/v) trypan blue in PBS (pH 7.2) for enumeration of viable and non-viable cells using a hemocytometer.

Field Emission Scanning Electron Microscopy (FESEM)

AGS or HUVECs grown on glass coverslips were co-cultured with *H. pylori* strains at MOI of 30 as described above. After 2, 4, and 5 h, samples were washed once with the corresponding growth media and then fixed with 2% PFA at 4°C for 24 h. Fixation was repeated with a fresh batch of 2% PFA at 4°C for 24 h, after which the fixative was replaced with 100 mM HEPES (pH 6.9). Samples were dehydrated and processed by critical point-drying as described previously (Rohde et al., 2003), and were examined with a field emission scanning electron microscope Zeiss DSM 982 Gemini using the Everhart Thornley SE detector and the inlens detectors in a 50:50 ratio. Assessment of the abundance of T4SS pili in each sample was performed blinded. The brightness and contrast of the micrographs were adjusted globally using Adobe Photoshop CS3.

p65 Immunofluorescence

To investigate p65 nuclear translocation during *H. pylori* infection, HUVECs were grown on 12-mm diameter glass coverslips and then serum-starved before *H. pylori*-infection. To examine the effect of the IκB kinase inhibitor BMS345541 on p65 nuclear translocation, HUVECs grown in a 24-well plate were serum-starved and then pre-treated with DMSO or BMS345541 (10 µM) for 30 min prior to co-culture with BHI or *H. pylori* for 3 h. At the required post-infection time points, culture supernatants were recovered and HUVECs monolayers were washed once with PBS before fixation with 4% (w/v) PFA in PBS for 15 min at room temperature. Fixed cells were washed 3 times with PBS, then blocked/permeabilized with PBS (pH 7.2) containing 5% (v/v) FBS and 0.3% (v/v) Triton X-100, before incubation (overnight, 4°C) with anti-p65 mAb and anti-*H. pylori* antisera diluted in antibody diluent (1% (w/v) bovine serum albumin, 0.12% (v/v) Triton X-100, in PBS, pH 7.2). Cells were then washed three times with PBS followed by incubation (2 h at room temperature) with antibody diluent containing AlexaFlour 555-conjugated donkey anti-mouse Ig and AlexaFlour 647-conjugated donkey anti-goat Ig (Invitrogen). Nuclei were counter-stained with DAPI (0.4 µg/ml in PBS; Sigma) for 5 min at room temperature. Localization of p65 and DAPI staining was captured digitally for at least 5 fields per coverslip at 60x magnification using a Leica SP5 confocal microscope. Images were colorized and overlaid using the software ImageJ.

SDS-Polyacrylamide Gel Electrophoresis (SDS-PAGE) and Immunoblot Analysis

To examine the relative abundance of total and tyrosyl phosphorylated CagA in *H. pylori*-AGS or *H. pylori*-HUVECs co-cultures, cell lysates were separated in 6% SDS-PAGE gels using the Bio-Rad mini-Protean III system according to the Laemmli buffer system. Tyrosine-phosphorylated and total CagA were detected by immunoblotting using the PY99 and anti-CagA antibodies, respectively, using procedures described previously (Kwok et al., 2007).

To detect EGFR expression in uninfected HUVECs and *H. pylori*-HUVECs co-culture, HUVECs cultures were lysed with radioimmunoprecipitation assay (RIPA) buffer containing 0.5% (w/v) sodium deoxycholate, 150 mM NaCl, 1% (v/v) Tergitol-type NP-40, 50 mM Tris-HCl pH 8.0, 0.1% (w/v) SDS, 10% glycerol, 5 mM EDTA, 20 mM sodium fluoride, 10 μ g/mL aprotinin, 1 mM phenylmethane sulfonyl fluoride (PMSF), 10 μ g/mL leupeptin, 1 mM sodium orthovanadate, 2.5 mM sodium pyrophosphate and 2.5 mM β -glycerophosphate. Lysates were collected and clarified by high-speed centrifugation. Protein concentrations were then determined with the BCA protein kit (#23225, ThermoScientific) according to the manufacturer's protocol. Protein samples (20–30 μ g) were separated in 8% polyacrylamide gels, and were wet transferred onto polyvinylidene difluoride (PVDF) membranes. Membranes were blocked with 5% (w/v) skim milk reconstituted in TBS-T buffer (50 mM Tris-HCl pH 7.5, 150 mM NaCl, 0.1% v/v Tween 20) for 1 h at room temperature. Membranes were then incubated with their respective primary antibody diluted in blocking buffer overnight in 4°C. Membranes were washed thrice for 10 min with TBS-T in room temperature, then probed with horseradish peroxidase-conjugated anti-mouse or anti-rabbit secondary antibody diluted in blocking buffer. Membranes were

washed thrice for 10 min with TBS-T in room temperature before signal detection using the enhanced chemiluminescence substrate kit, Western Lightning Plus-ECL (Perkin Elmer).

IL-8 and IL-6 ELISA

The amounts of IL-8 and IL-6 secreted were determined using the human IL-8 OptEIA ELISA set (BD Biosciences) and human IL-6 OptEIA ELISA set (BD Biosciences), respectively, according to manufacturer's instruction. All samples were measured in duplicate.

Bacterial Adherence Assay

HUVECs were seeded in a 96-well plate at a density of 0.5×10^4 cells per well (200 μ l) and grown for 2 days before infection with *H. pylori*. At 24 hpi, culture supernatant was discarded and wells were washed twice gently with 300 μ l of growth media. Cells were then fixed with 3.8% (w/v) PFA for 15 min at room temperature. After washing with PBS, wells were blocked with 10% FBS in $1 \times$ PBS (200 μ l/well) for 1 h at room temperature. After blocking, wells were washed $3 \times$ with PBS supplemented with 0.05% TBST (PBST_{0.05}). Cells were then incubated with goat anti-*H. pylori* antiserum (100 μ l/well) diluted 1:1,000 in blocking buffer for 1 h at room temperature. After washing with

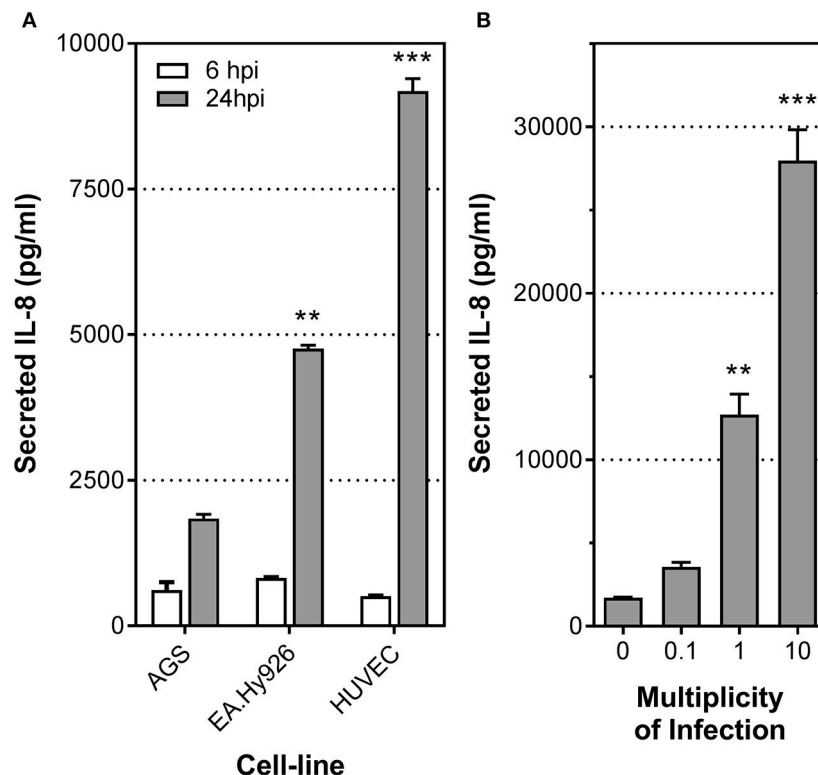


FIGURE 1 | *H. pylori* stimulates potent inflammatory response in human endothelial cells. **(A)** Mean secreted IL-8 levels in spent culture media collected at 6 and 24 h post-infection (hpi) from AGS, EA.Hy926 or HUVECs infected with *H. pylori* P12 wild-type at MOI = 1. Error bars denote SEM; $N = 2$; statistical analysis using one-way ANOVA (Tukey's multiple comparisons post-test); ** and *** denote conditions significantly different ($p < 0.005$ and $p < 0.001$, respectively) to AGS. **(B)** Mean secreted IL-8 levels in spent culture media collected at 24 hpi from HUVECs inoculated with HI, or with *H. pylori* P12 wild-type at MOI = 0.1, 1, or 10. Error bars denote SEM; $N = 2$; statistical analysis using one-way ANOVA (Tukey's multiple comparisons post-test); ** and *** denote conditions significantly different ($p < 0.005$ and $p < 0.001$, respectively) to MOI of 0.

PBS three times, rabbit anti-goat IgG horseradish peroxidase-conjugated antibody (100 μ l/well) diluted 1:2,000 in blocking buffer was added and incubated for 1 h at room temperature. After washing five times with PBST_{0.05}, cells were incubated with 3,3',5,5'-Tetramethylbenzidine (TMB) (100 μ l/well) for 25–45 min, after which the reaction was stopped by addition of 1M H₂SO₄ (50 μ l/well). Optical density (O.D.) at 450 nm of each well was measured using a TECAN ELISA plate reader and background-corrected against absorbance at 570 nm.

Determination of EGR1 and EGFR mRNA Levels by Real-Time PCR

HUVECs were seeded at 3×10^4 cells per well into 24-well plates and grown to ~70% confluence (2.5 days). Cells were serum-starved for 5 h before inoculation with sterile BHI, or *H. pylori* P12 WT or isogenic *cagL* or *cagPAI* deletion mutant strains (MOI = 50). Cells were harvested at 0.5, 1, 2, and 3 hpi into 350 μ l RLY cell lysis buffer (ISOLATE II RNA mini kit, Bionline) supplemented with 10 mM dithiothreitol, and RNA purified according to the kit protocol for “purifying total RNA from cultured cells and tissue.” RNA concentrations were estimated by Nanodrop (Thermo Fisher) and 125 ng RNA was used for cDNA production using the Superscript III first strand synthesis system with oligo d(T) primers (Thermo Fisher) according to the kit protocol. *EGR1* and *EGFR* mRNA levels were assessed by

qPCR using FastStart Universal SYBR Green Master mix (Roche) with gene-specific primers for *EGR1* [*EGR1F* 5'-CCCGTTCGGATCCTTTCCT-3' and *EGR1R* 5'-CAGCATCATCTCCTCCAGCTT-3' (Keates et al., 2005)], *EGFR* [*EGFR-F* 5'-GCGTCTCTGCCGGAATGT-3' and *EGFR-R* 5'-GGCTCACCTCCAGAA GGT-3' (Keates et al., 2007)] and *GAPDH* [*GAPDH-F* 5' C GGAATGCAGTTGAGGATC 3' and *GAPDH-R* 5' AGGATGGTGAAGCGATGGC 3' (Witta et al., 2009)]. Quantitative PCRs were prepared in triplicate and individual 25 μ l reactions contained 0.4 mM primer pair and 2 μ l cDNA (\approx 12.5 ng RNA) or nuclease-free H₂O (no-template control). Cycling conditions were: 1 cycle (95°C for 10 min); 40 cycles (95°C for 15 s, 60°C for 60 s); melting curve from 65 to 95°C, 5 s per 1°C. Output qPCR data was assembled into amplicon groups and analyzed using LinRegPCR [software version 2017.0 (Ramakers et al., 2003)]; mean PCR efficiencies were 2.01 for *GAPDH*, 2.03 for *EGR1* and 2.06 for *EGFR*. Fold differences in *EGR1* and *EGFR* mRNA levels calculated using *GAPDH* as the reference gene and BHI as the control sample by the $\Delta\Delta C_T$ ($2^{-(C_{\text{target gene}} - C_{\text{ref gene}})_{\text{control sample}} - (C_{\text{target gene}} - C_{\text{ref gene}})_{\text{test sample}}}$) and the Ruijter ($(\text{PCR efficiency}^{C_{\text{target gene}}})_{\text{test sample}} / (\text{PCR efficiency}^{C_{\text{ref gene}}})_{\text{test sample}} / (\text{PCR efficiency}^{C_{\text{target gene}}})_{\text{control sample}} / (\text{PCR efficiency}^{C_{\text{ref gene}}})_{\text{control sample}}$) methods (Ruijter et al., 2009) were indistinguishable; differential expression was reported as $2^{-\Delta\Delta C_T}$ values.

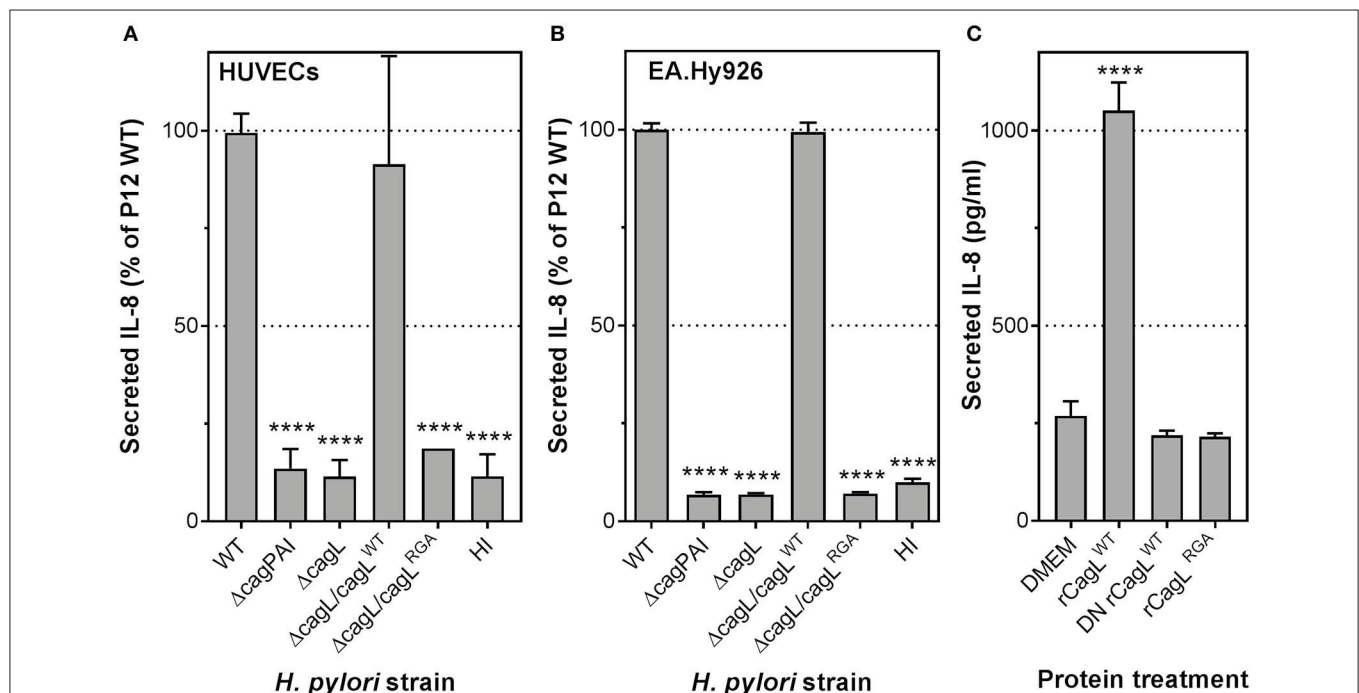


FIGURE 2 | *H. pylori* T4SS, via the CagL adhesin, plays an essential role in IL-8 induction in infected human endothelial cells. Mean secreted IL-8 levels in spent culture medium collected from (A) HUVECs or (B) EA.Hy926 cells inoculated with heart infusion broth (HI), *H. pylori* P12 wild-type (WT), or isogenic Δ cagPAI and Δ cagL mutants at 24 hpi; MOI = 1. Error bars denote SEM, $N = 3$; statistical analysis using two-way ANOVA (Tukey's multiple comparisons post-test); ****denotes conditions significantly different ($p < 0.0001$) to WT. (C) Mean secreted IL-8 levels in spent culture medium collected from EA.Hy926 cells incubated for 24 h with DMEM media or 100 μ g/ml recombinant CagL wild-type (rCagL^{WT}), heat-inactivated CagL (DN rCagL^{WT}) or CagL RGA mutant protein (rCagL^{RGA}). Error bars denote SD, $N = 4$; statistical analysis using one-way ANOVA (Tukey's multiple comparisons post-test).

Statistical Analyses

Numerical data were analyzed using Prism 6.0 (GraphPad software) and presented as mean \pm standard error of the mean (SEM) or mean \pm standard deviation (SD). *N* denotes the number of independent experiments performed. Statistical significance was determined using Student's *t*-test, one-way ANOVA or two-way ANOVA with appropriate post-test, as indicated in the figure legends.

RESULTS

H. pylori Is a Potent Stimulant of Proinflammatory Responses by Endothelial Cells

Previous studies have shown that *H. pylori* stimulates secretion of the proinflammatory cytokines IL-8 and IL-6 upon infection of endothelial cells (Ding et al., 1997; Innocenti et al., 2002). To further understand the biological significance of these responses and the mechanism behind, we first compared the levels of IL-8 secretion induced by *H. pylori* upon infection of primary HUVECs, an immortalized HUVEC line (EA.Hy926), or a gastric epithelial cell line (AGS) (Figure 1A). Low multiplicities of infection (MOI) were used to mimic the relatively low abundance of *H. pylori* present in the gastric submucosa where the majority

of blood vessels reside. At MOI of 1, similar levels of IL-8 induction were observed at 6 h post-inoculation in all three cell lines/types upon infection with the *H. pylori* strain P12. However, after 24 h of stimulation by *H. pylori*, the level of IL-8 secreted by the endothelial cell line EA.Hy926 was more than double that observed with AGS (Figure 1A). This marked response was even more pronounced with the primary endothelial cells HUVECs (Figure 1A). Moreover, these levels of IL-8 induction observed in *H. pylori*-infected endothelial cells at MOI of 1 are similar to or even higher than that previously observed with *H. pylori* infection of primary human gastric epithelial cells at MOI of 100 (Fischer, 2011; Mustapha et al., 2014). In fact, *H. pylori* induced IL-8 secretion by primary endothelial cells even at MOI of 0.1 (Figure 1B). Taken together, these results suggest that endothelial cells may play a more important role in mounting early proinflammatory responses toward *H. pylori* than previously envisaged.

The T4SS Is Essential for *H. pylori*-Induced Proinflammatory Responses in Endothelial Cells

To elucidate the molecular mechanism(s) involved in stimulating the potent inflammatory response in endothelial cells by *H. pylori*, we examined the contribution of *H. pylori* T4SS to

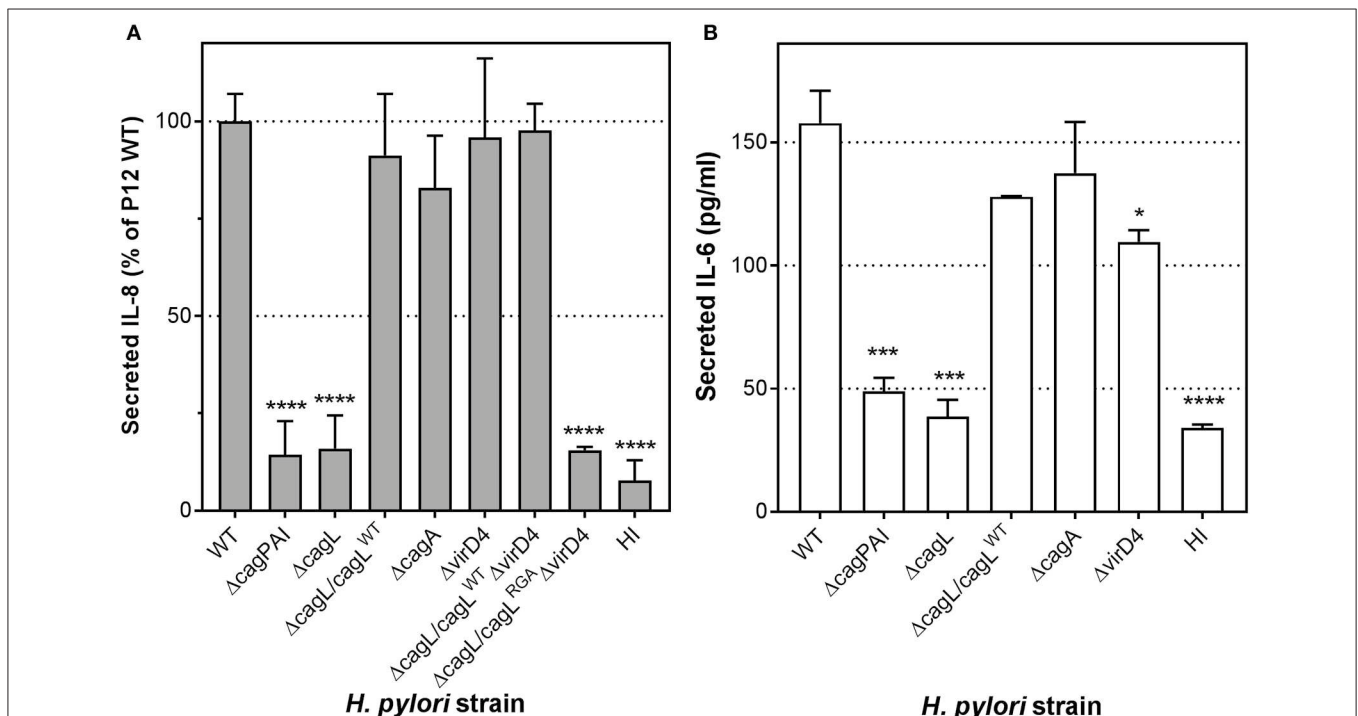


FIGURE 3 | The essential role CagL plays in IL-8 and IL-6 induction in infected human endothelial cells is independent of CagA. **(A)** Mean secreted IL-8 levels in spent culture medium collected at 24 hpi from HUVECs inoculated with HI, or *H. pylori* strains P12 WT or various isogenic $\Delta cagL$, $\Delta cagA$, and $\Delta virD4$ single and double mutants at MOI = 10. Error bars denote SEM, *N* = 4; statistical analysis using two-way ANOVA (Tukey's multiple comparisons post-test); ****denotes conditions significantly different ($p < 0.0001$) to WT. **(B)** Mean secreted IL-6 levels in spent culture medium collected at 24 hpi from HUVECs inoculated with HI, or *H. pylori* strains P12 WT or various isogenic $\Delta cagL$, $\Delta cagA$, and $\Delta virD4$ mutants at MOI = 10. Error bars denote SD, *N* = 2; statistical analysis using two-way ANOVA (Tukey's multiple comparisons post-test); *, ***, and **** denote conditions significantly different ($p < 0.05$, $p < 0.001$, and $p < 0.0001$, respectively) to WT.

IL-8 induction. HUVECs were infected with *H. pylori* P12 wild-type (WT) or isogenic *cagPAI*-deletion ($\Delta cagPAI$) mutant. The $\Delta cagPAI$ mutant, which lacks the genes that encode the T4SS, lost the ability to induce IL-8 secretion in HUVECs compared to wild-type *H. pylori* (Figure 2A). Similar observations were obtained upon *H. pylori* infection of the endothelial cell line EA.Hy926 (Figure 2B). These findings suggest that induction of IL-8 by *H. pylori* is strongly dependent upon the constituents of the T4SS.

CagL Is an Essential Trigger of Proinflammatory Responses in Endothelial Cells

CagL is a T4SS-associated adhesin capable of binding to the human transmembrane receptor integrin $\alpha_5\beta_1$ via an arginine-glycine-aspartate (RGD) motif (Kwok et al., 2007). We have shown previously that interaction of CagL with integrin β_1 via the RGD motif triggers secretion of IL-8 in gastric epithelial cells (Gorrell et al., 2013). To test whether CagL and its RGD motif are also important for stimulating IL-8 secretion upon *H. pylori* infection of endothelial cells, we infected HUVECs with a *H. pylori* P12 isogenic mutant deficient in CagL (P12 $\Delta cagL$) or an isogenic *cagL* mutant that expresses an arginine-glycine-alanine (RGA) motif instead of the RGD motif (P12 $\Delta cagL/cagL^{RGA}$). The $\Delta cagL$ mutant, like the $\Delta cagPAI$ mutant, was significantly attenuated in its ability to induce IL-8 secretion in HUVECs (Figure 2A), as well as the EA.Hy926 cell-line (Figure 2B). Similarly, substitution of the RGD motif with RGA in CagL ($\Delta cagL/cagL^{RGA}$) resulted in severely attenuated IL-8 induction (Figure 2A). In contrast, knock-in of P12 $\Delta cagL$ with wild-type *cagL* (P12 $\Delta cagL/cagL^{WT}$) fully restored IL-8 secretion, confirming that the loss of P12 $\Delta cagL$'s ability to induce IL-8 was not due to polar effects (Figures 2A,B). Adherence assays confirmed that the mutants and wild-type strains adhered to endothelial host cells to similar extents (Supplementary Figure 1). Taken together, these results suggest that CagL and its RGD motif play a major role in inducing IL-8 secretion upon *H. pylori* infection of HUVECs, which is reminiscent of the key role of CagL in IL-8 induction in infected gastric epithelial cells (Gorrell et al., 2013).

We have previously shown that CagL protein alone was sufficient to induce IL-8 secretion upon *H. pylori* infection of gastric epithelial cells (Gorrell et al., 2013). To test whether the same holds true for *H. pylori*-mediated IL-8 induction in endothelial cells, EA.Hy926 cells were stimulated with recombinant wild-type CagL protein (rCagL^{WT}), heat-denatured recombinant CagL (DN rCagL^{WT}) or CagL^{RGA} mutant protein. The results showed that rCagL^{WT}, but not DN rCagL^{WT} or the rCagL^{RGA} mutant, stimulated an ~3.5-fold increase in IL-8 secretion by endothelial cells (Figure 2C); the inability of DN rCagL^{WT} to induce an IL-8 response confirmed that the response was unlikely to be caused by any trace amount of contaminating lipopolysaccharide (LPS) as the pyrogenic effect of LPS is heat-resistant (Gao et al., 2006). These observations indicate that CagL alone is sufficient to trigger IL-8 secretion by endothelial cells in an RGD-dependent manner.

CagL Triggers IL-8 and IL-6 Secretion by Endothelial Cells in a Manner Independent of CagA Translocation

During *H. pylori* infection of gastric epithelial cells, CagL plays a major role in mediating the translocation of the T4SS substrate, CagA, into the host cells (Kwok et al., 2007; Gorrell et al., 2013). Moreover, translocated CagA can contribute to IL-8 induction in *H. pylori*-infected gastric epithelial cells (Brandt et al., 2005). It is thus possible that the CagL-dependent IL-8 induction observed in endothelial cells could be mediated by translocated CagA *per se*. To investigate whether CagA or CagA translocation contributes to endothelial cell proinflammatory responses, we infected HUVECs with wild-type *H. pylori*, *cagA*-deletion ($\Delta cagA$) or *virD4*-deletion ($\Delta virD4$) mutant. The $\Delta virD4$ mutant is defective in CagA translocation as VirD4 is the coupling protein of the *H. pylori* T4SS essential for the translocation of CagA through the T4SS channel into the host cell (Fischer, 2011). In contrast to the $\Delta cagPAI$ and $\Delta cagL$ mutants, the $\Delta cagA$ or $\Delta virD4$ mutants were fully capable of triggering IL-8 secretion in HUVECs to levels observed with wild-type (Figure 3A). Adherence assays confirmed that these mutants and wild-type strains adhered to HUVECs to similar extents (Supplementary Figure 1). These observations therefore show that the *H. pylori* T4SS *per se*, but not its translocation substrate CagA, is a major inducer of IL-8 secretion in *H. pylori*-infected endothelial cells. Moreover, in agreement with the IL-8 results, analysis of IL-6 secretion in samples from this series of experiments indicated that *H. pylori*-mediated induction of IL-6 in infected HUVECs was also T4SS- and CagL-dependent, but CagA-independent (Figure 3B).

Given that the IL-8 induction by *H. pylori* in HUVECs was significantly more pronounced compared to the IL-6 response, we decided to focus on the IL-8 response in our further interrogation of the molecular mechanism by which the *H. pylori* T4SS triggers proinflammatory responses in endothelial cells. To further test the hypothesis that CagL can directly stimulate IL-8 induction in gastric epithelial cells in a manner independent of its role in mediating CagA translocation (Gorrell et al., 2013), we made use of the *cagL*^{WT} $\Delta virD4$ mutant and the *cagL*^{RGA} $\Delta virD4$ double mutant. The *H. pylori* *cagL*^{WT} $\Delta virD4$ mutant, which expresses wild-type CagL but lacks VirD4, is defective in CagA translocation but still able to induce IL-8 secretion in gastric epithelial cells; in contrast, the *cagL*^{RGA} $\Delta virD4$ double mutant is defective in both CagA translocation and IL-8 induction in infected gastric epithelial cells (Gorrell et al., 2013). Upon infection of HUVECs, the *cagL*^{WT} $\Delta virD4$ variant was fully capable of potent IL-8 induction, but the *cagL*^{RGA} $\Delta virD4$ mutant was significantly attenuated in its ability to induce IL-8 (Figure 3A). These results support the notion that CagL and its RGD motif contribute to IL-8 induction in endothelial cells in a manner independent of their roles in CagA translocation.

We next examined whether the CagA-independent effect is unique to the *H. pylori* strain P12. HUVECs were stimulated with wild-type *H. pylori* strain 7.13 and its isogenic $\Delta cagA$ mutant. Strain 7.13 is a carcinogenic Mongolian gerbil-adapted *H. pylori* human isolate which possesses a functional T4SS and

is able to translocate a relatively high abundance of CagA into the gastric epithelial cell line AGS compared to other strains (Franco et al., 2005). Consistent with the hypothesis that CagA is dispensable for IL-8 induction by *H. pylori* upon infection of human endothelial cells, no difference in the levels of IL-8 induction was observed between wild-type 7.13 and 7.13 Δ cagA during infection of HUVECs (Supplementary Figure 2).

Taken together, these novel findings support the notion that the *H. pylori* T4SS and its adhesin, CagL, are key drivers of IL-8 induction during *H. pylori* infection of endothelial cells. Moreover, this pro-inflammatory response occurs in a manner independent of CagA translocation.

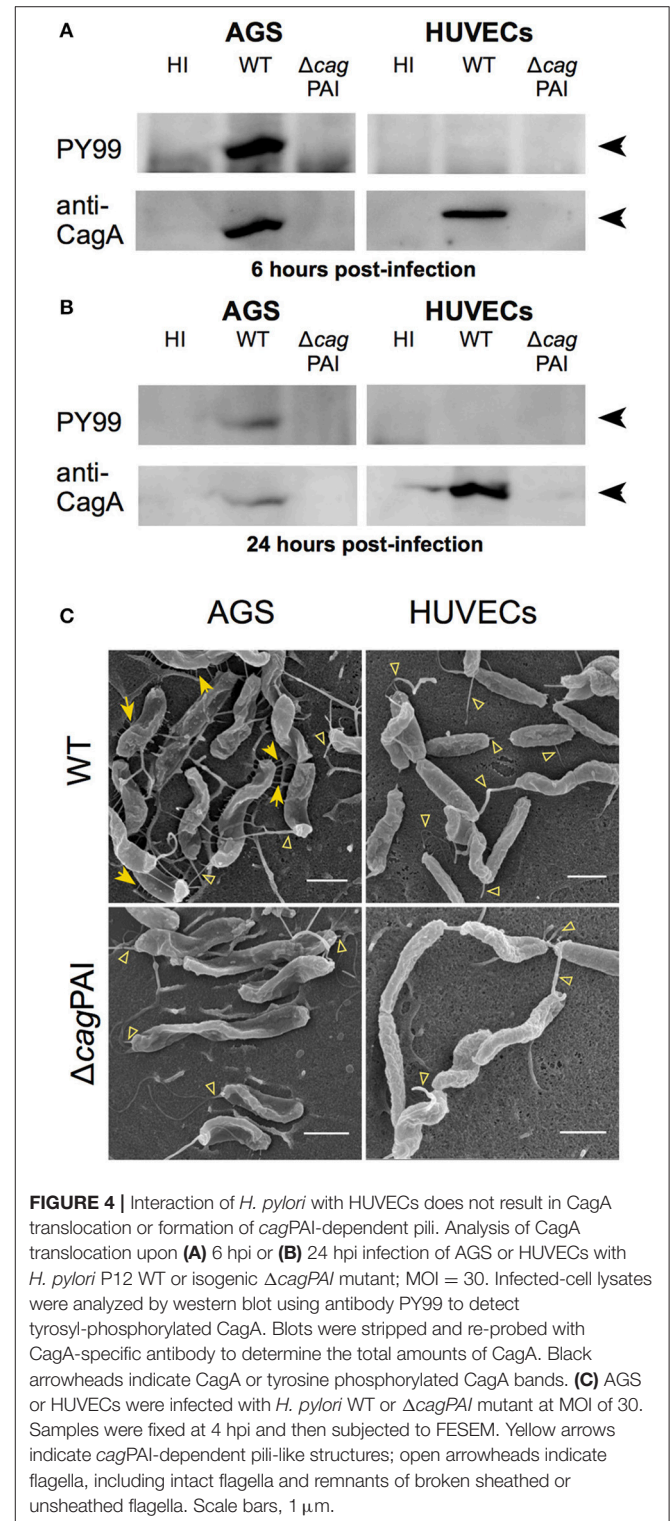
Interaction of *H. pylori* with HUVECs Does Not Result in CagA Phosphorylation or Formation of cagPAI-Dependent Pili

The observation that CagA does not play a role in IL-8 induction in *H. pylori*-infected endothelial cells led us to speculate that the *H. pylori* T4SS may lack the ability to translocate CagA into these cells. Previous studies have shown that CagA, upon translocation by *H. pylori* T4SS into gastric epithelial cells, becomes phosphorylated by the host Src kinase on a number of tyrosine residues in its C-terminal region (Segal et al., 1999; Backert et al., 2000; Stein et al., 2000), which is required for CagA to trigger IL-8 secretion in *H. pylori*-infected gastric epithelial cells (Brandt et al., 2005). Therefore, we investigated whether *H. pylori* infection of HUVECs results in tyrosyl-phosphorylated CagA. No tyrosyl-phosphorylated CagA could be detected in the lysate of *H. pylori*-infected HUVECs up to 24 hpi, whereas the presence of tyrosyl-phosphorylated CagA was readily detectable in *H. pylori*-infected AGS cells (Figures 4A,B, and Supplementary Figure 3), indicating that *H. pylori* is able to efficiently translocate CagA into AGS, whereas in HUVECs CagA was either not translocated or not tyrosyl-phosphorylated. Supporting the proposition that CagA translocation occurs in infected AGS but not infected HUVECs is the observation that cagPAI-dependent pili-like structures were abundantly present at the interface of *H. pylori* and AGS (Figure 4C, left-hand panels) whereas no pili-like structures were detected at the interface of *H. pylori* and HUVECs (Figure 4C, right-hand panels). The elaboration of cagPAI-dependent pili-like structures at the interface of *H. pylori* and AGS cells has been associated with active CagA translocation into the host cell (Rohde et al., 2003; Kwok et al., 2007; Shaffer et al., 2011). Thus, taken together, these observations suggest that although the T4SS is capable of triggering proinflammatory responses in *H. pylori*-infected HUVECs, it does not translocate CagA into or lead to CagA phosphorylation in HUVECs.

Integrins $\alpha_5\beta_1$ and $\alpha_v\beta_3$ Are Dispensable for *H. pylori*-Induced IL-8 Secretion by Endothelial Cells

Having ascertained that the *H. pylori* T4SS and, in particular, CagL, played an important role in IL-8 induction, we next examined whether the proinflammatory response is mediated by the host receptor integrin $\alpha_5\beta_1$, as previously observed

for IL-8 induction by *H. pylori* in AGS cells (Hutton et al., 2010; Gorrell et al., 2013). The role of RGD-binding integrin $\alpha_v\beta_3$ in *H. pylori*-mediated IL-8 secretion by endothelial cell was also investigated as integrin $\alpha_v\beta_3$ is abundantly expressed in HUVECs (Brooks et al., 1994; Baranska et al., 2005) and



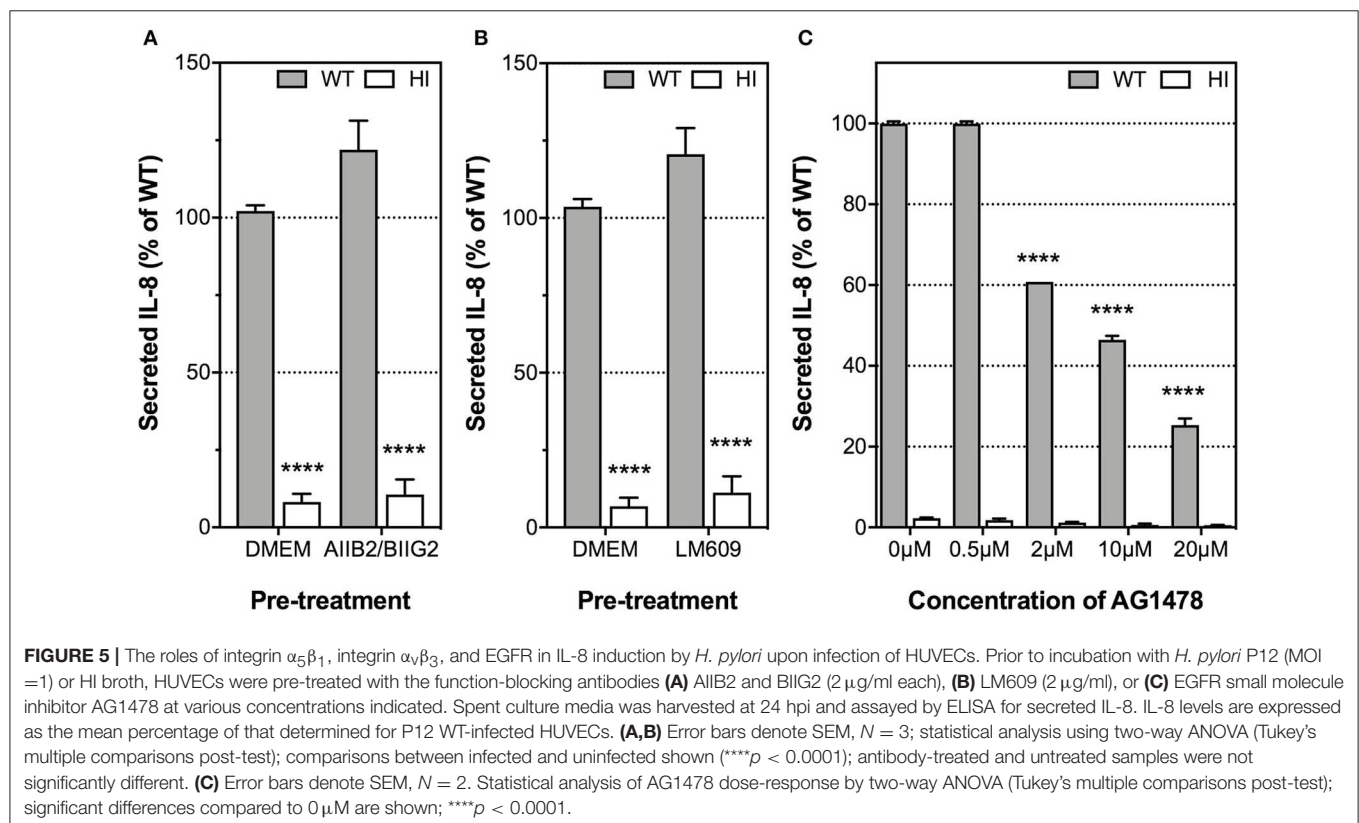
is crucial for endothelial functions such as angiogenesis and adhesion of endothelial cells to vitronectin in the extracellular matrix (Alghisi et al., 2009). To this end, we used the β_1 integrin function-blocking antibody, AIIB2, together with the α_5 integrin-function blocking antibody, BIIG2, to block $\alpha_5\beta_1$ function; and the $\alpha_v\beta_3$ integrin-function blocking antibody, LM609. The specific inhibitory activities of AIIB2/BIIG2 and LM609 for cell spreading on their individual ligands fibronectin or vitronectin, respectively, was first confirmed in cell attachment assays (Supplementary Figure 4). HUVECs were then pre-treated with these antibodies prior to *H. pylori* infection and detection of IL-8 secretion. Integrin $\alpha_5\beta_1$ function was not essential for IL-8 induction by *H. pylori* in HUVECs, as pre-treatment of HUVECs with AIIB2 and BIIG2 did not suppress IL-8 secretion in response to *H. pylori* (Figure 5A). Similar observations were obtained when HUVECs were pre-treated with LM609 prior to *H. pylori* infection (Figure 5B). These findings indicate that integrins $\alpha_5\beta_1$ and $\alpha_v\beta_3$ are dispensable for *H. pylori*-mediated IL-8 induction upon infection of endothelial cells.

Epidermal Growth Factor Receptor (EGFR) Plays an Important Role in *H. pylori*-Induced IL-8 and IL-6 Secretion by Endothelial Cells

Previous studies have shown that *H. pylori* is capable of transactivating epidermal growth factor receptor (EGFR) and

up-regulating its expression in gastric epithelial cells in a T4SS-dependent manner, and that EGFR activation contributes to IL-8 induction by *H. pylori* (Keates et al., 2001, 2005, 2007). To investigate whether EGFR also plays a role in the induction of IL-8 by *H. pylori* during infection of HUVECs, we pre-treated HUVECs with AG1478 prior to infection with *H. pylori*. AG1478 is a small-molecule inhibitor that specifically inhibits the tyrosine kinase activity of EGFR (Zhu et al., 2001). AG1478 strongly inhibited IL-8 secretion (Figure 5C) and IL-6 secretion (Supplementary Figure 5) by HUVECs in response to *H. pylori* in a dose-dependent manner without affecting cell viability at concentrations up to 20 μ M (Supplementary Figure 6). These findings indicate that EGFR function is a major contributor to IL-8 induction by *H. pylori* in HUVECs.

Due to the rather low level of EGFR expression in HUVECs (Figure 6A), we were unable to detect activation of EGFR directly by Western blot using antibodies specific for the various tyrosine phosphorylated forms of EGFR, or by immunoprecipitating the EGFR and then blotting with such antibodies or with anti-phosphotyrosine antibodies. However, it is known that transactivation of EGFR by *H. pylori* upregulates expression of the transcription factor early growth response gene 1 (EGR1) in the gastric epithelial cell line AGS (Keates et al., 2005). The role of EGR1 as a downstream effector of EGFR is well established. We therefore used EGR1 upregulation as a marker for EGFR activation and examined whether T4SS or CagL is involved in the activation of EGFR during infection. First, our results showed that *H. pylori* P12 WT was able to efficiently



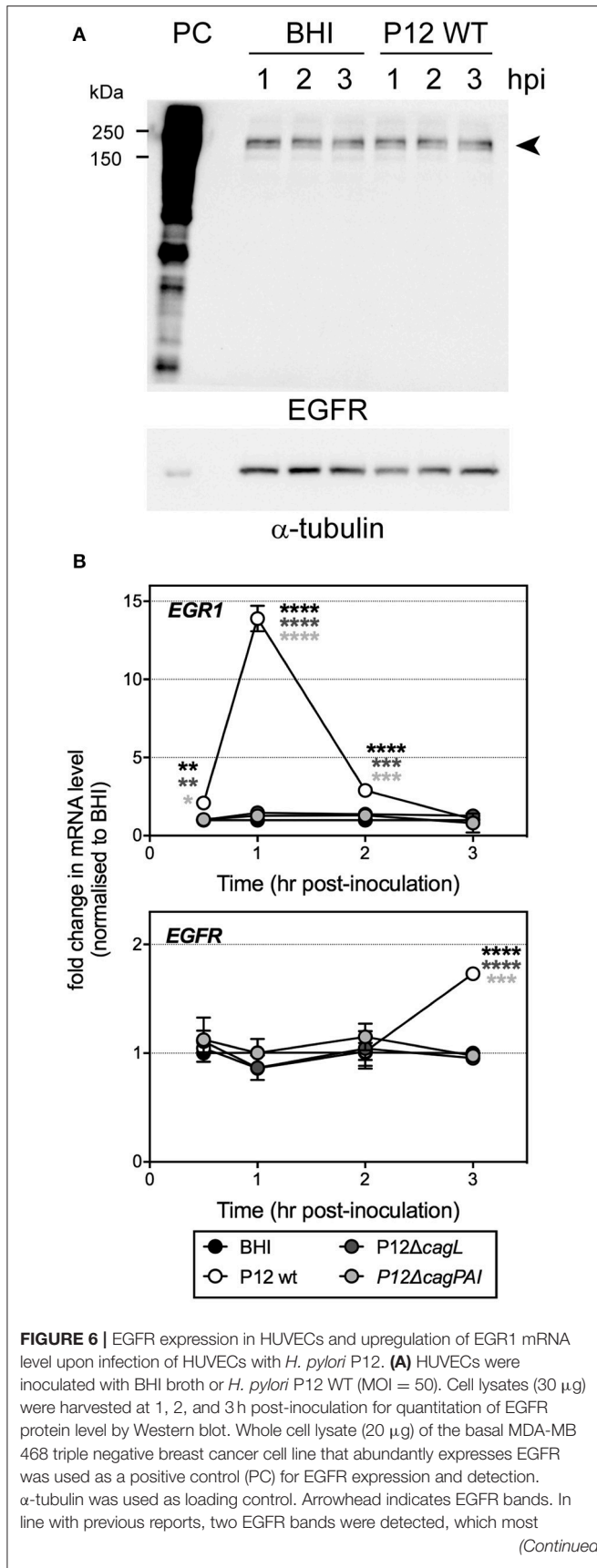
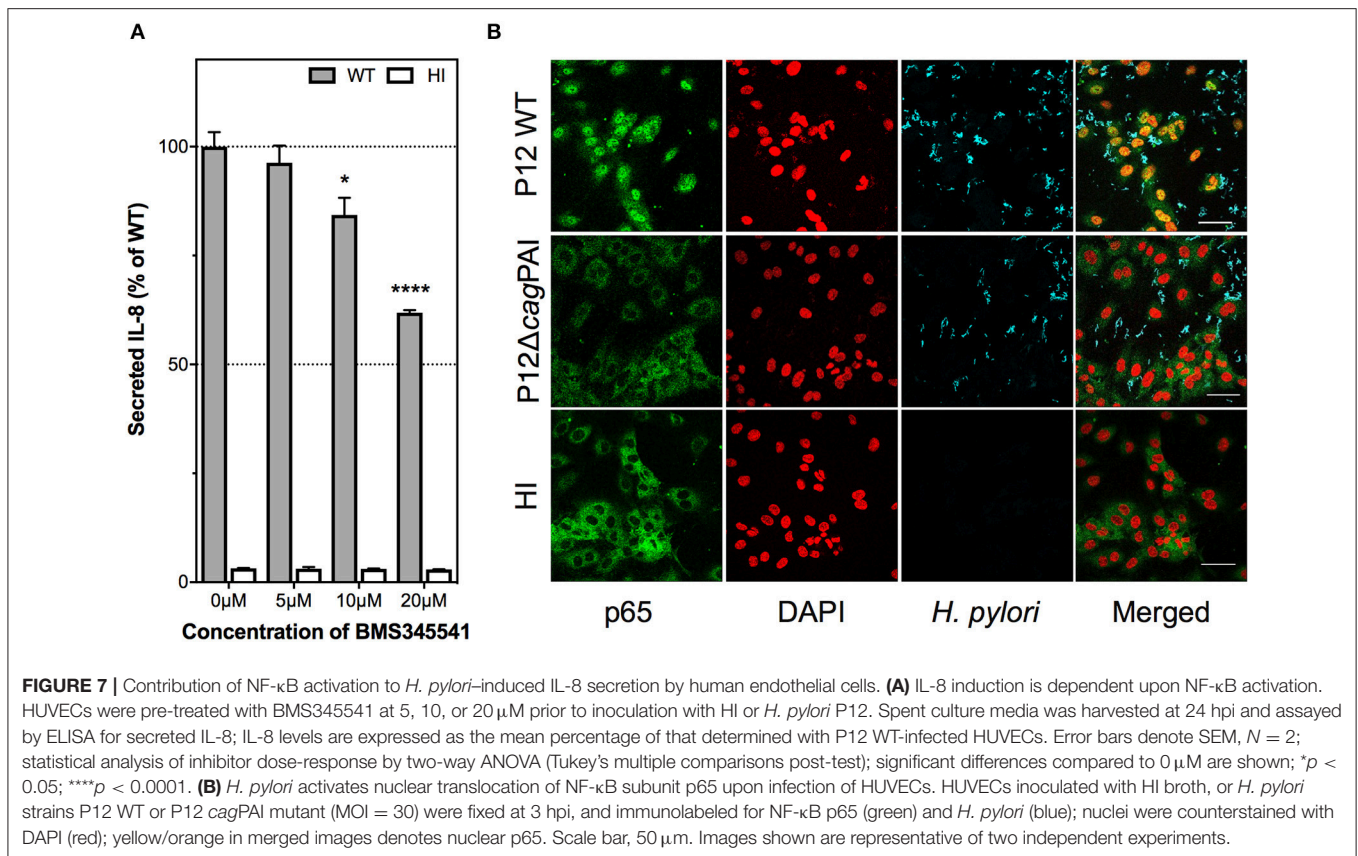


FIGURE 6 | likely correspond to EGFR isoforms that differ in post-translational modification (Gabijs et al., 2012; He et al., 2016). **(B)** HUVECs were inoculated with BHI broth, or *H. pylori* P12 WT or isogenic Δ cagL and Δ cagPAI mutant strains (MOI = 50), and cells were harvested at 0.5, 1, 2, and 3 hpi for quantitation of *EGR1* (upper panel) and *EGFR* (lower panel) mRNA levels by qRT-PCR. *EGR1* mRNA levels in response to *H. pylori* P12 WT was significantly greater than BHI, P12 Δ cagL, and P12 Δ cagPAI (asterisk shades match corresponding graph symbols) at 0.5, 1, and 2 hpi. *EGFR* mRNA levels in response to *H. pylori* P12 WT was significantly greater than BHI, P12 Δ cagL and P12 Δ cagPAI (asterisk shades match corresponding graph symbols) at 3 hpi. Statistical significance was determined by two-way ANOVA with Tukey's multiple comparison post-test; * P < 0.05, ** P < 0.01, *** P < 0.001, **** P < 0.0001; all other comparisons not significantly different. Mean \pm SD, data combined from two independent HUVEC activation experiments.

upregulate EGR1 expression in HUVECs. EGR1 upregulation was detectable as early as after 0.5 hpi and was maximal at 1 hpi (14-fold of upregulation compared to uninfected), with the EGR1 expression level returning to baseline by 3 hpi (**Figure 6B**, upper panel). The response followed a pattern very similar to that observed upon stimulation of gastric epithelial cells by *H. pylori* (Keates et al., 2005). Moreover, EGR1 upregulation was dependent on T4SS and CagL as both the Δ cagPAI and Δ cagL mutants, in contrast to wild type, were unable to upregulate EGR1 expression (**Figure 6B**, upper panel). These findings therefore suggest that *H. pylori* T4SS and the T4SS adhesin CagL play essential role(s) in activating EGFR during infection of HUVECs. In addition to stimulating EGFR activity, *H. pylori* P12 WT also triggered a moderate upregulation of EGFR expression in HUVECs as shown by a 1.7-fold increase in EGFR mRNA level at 3 hpi compared to uninfected control (**Figure 6B**, lower panel). In contrast, the Δ cagPAI and Δ cagL mutants had no effect on EGFR expression (**Figure 6B**, lower panel), suggesting that upregulation of EGFR expression by *H. pylori* in HUVECs depends on T4SS and CagL. Taken together, these findings indicate that *H. pylori* triggers both activation and upregulation of expression of EGFR in HUVECs in a T4SS- and CagL-dependent manner.

Nuclear Factor Kappa B (NF- κ B) Is Activated by *H. pylori* T4SS and Plays a Key Role in IL-8 Induction in *H. pylori*-Infected Endothelial Cells

IL-8 induction during *H. pylori* infection of gastric epithelial cells has been shown to require NF- κ B activation (Keates et al., 2007; Gorrell et al., 2013). To test the hypothesis that IL-8 induction by *H. pylori* in endothelial cells is also mediated via activation of NF- κ B, HUVECs were pre-treated with the highly specific I κ B kinase inhibitor, BMS-345541, which specifically inhibits NF- κ B activation (Burke et al., 2003), prior to *H. pylori* infection. BMS-345541 significantly inhibited IL-8 induction by *H. pylori* in HUVECs in a dose-dependent manner (**Figure 7A**). Trypan blue exclusion assays confirmed that the inhibitor concentrations used had no detectable effect on the viability of HUVECs (data not shown). Additionally, immunofluorescence analysis showed that *H. pylori* stimulated activation of NF- κ B, which



was measured as a function of nuclear translocation of the NF- κ B p65 subunit, in a *cagPAI*-dependent manner at 3 hpi of HUVECs (**Figure 7B**) with the effect being observable up to 7 hpi (data not shown). BMS-345541 at a concentration of 10 μ M significantly blocked p65 nuclear translocation in *H. pylori*-infected HUVECs (Supplementary Figure 7). These findings corroboratively indicate that *H. pylori* T4SS triggers NF- κ B activation and that activation of NF- κ B contributes to IL-8 induction in *H. pylori*-infected endothelial cells.

DISCUSSION

During chronic infection, the pronounced host immune responses triggered by *H. pylori* infection cause damage to the gastric epithelial layer (Kusters et al., 2006). Such tissue damage reduces epithelial integrity, allowing *H. pylori* to gain access to other cell types in the gastric mucosa, including blood vessels and capillaries that are present as a dense mesh beneath the gastric epithelium. Indeed, *H. pylori* has been detected both close to erythrocytes and within blood vessels in the submucosal surface and lamina propria (Amieva et al., 2003; Semino-Mora et al., 2003; Aspholm et al., 2006; Necchi et al., 2007). Elevated levels of secreted IL-8 and IL-6 (Ding et al., 1997; Innocenti et al., 2002) as well as NF- κ B activation (Innocenti et al., 2002) during *H. pylori* infection of endothelial cells have been reported. The molecular details of the *H. pylori*-endothelial cells interplay have however

remained under-investigated. A previous study examined the role of *cagPAI* in the induction of inflammatory cytokines in HUVECs but no clear correlation was observed between the *cagPAI* status of *H. pylori* strains and the extent of IL-8 and IL-6 induction (Innocenti et al., 2002).

In this study, we have used a panel of well-characterized isogenic *H. pylori* variants with mutations in the *cagPAI* to unravel the contribution of T4SS and its various key components to IL-8 and IL-6 induction during *H. pylori* infection of endothelial cells. Using primary HUVECs and the HUVEC line EA.Hy926 as models, this study demonstrates for the first time that endothelial cells are significantly more potent than either immortalized or primary gastric epithelial cells in mounting an IL-8 response to *H. pylori* infection (Fischer et al., 2001; Gorrell et al., 2013; Mustapha et al., 2014). However, reminiscent of that observed with *H. pylori*-infected gastric epithelial cells (Gorrell et al., 2013), this potent IL-8 response of *H. pylori*-infected endothelial cells is T4SS- and CagL-dependent. Our findings also show that *H. pylori* T4SS and CagL are essential for IL-6 induction in HUVECs.

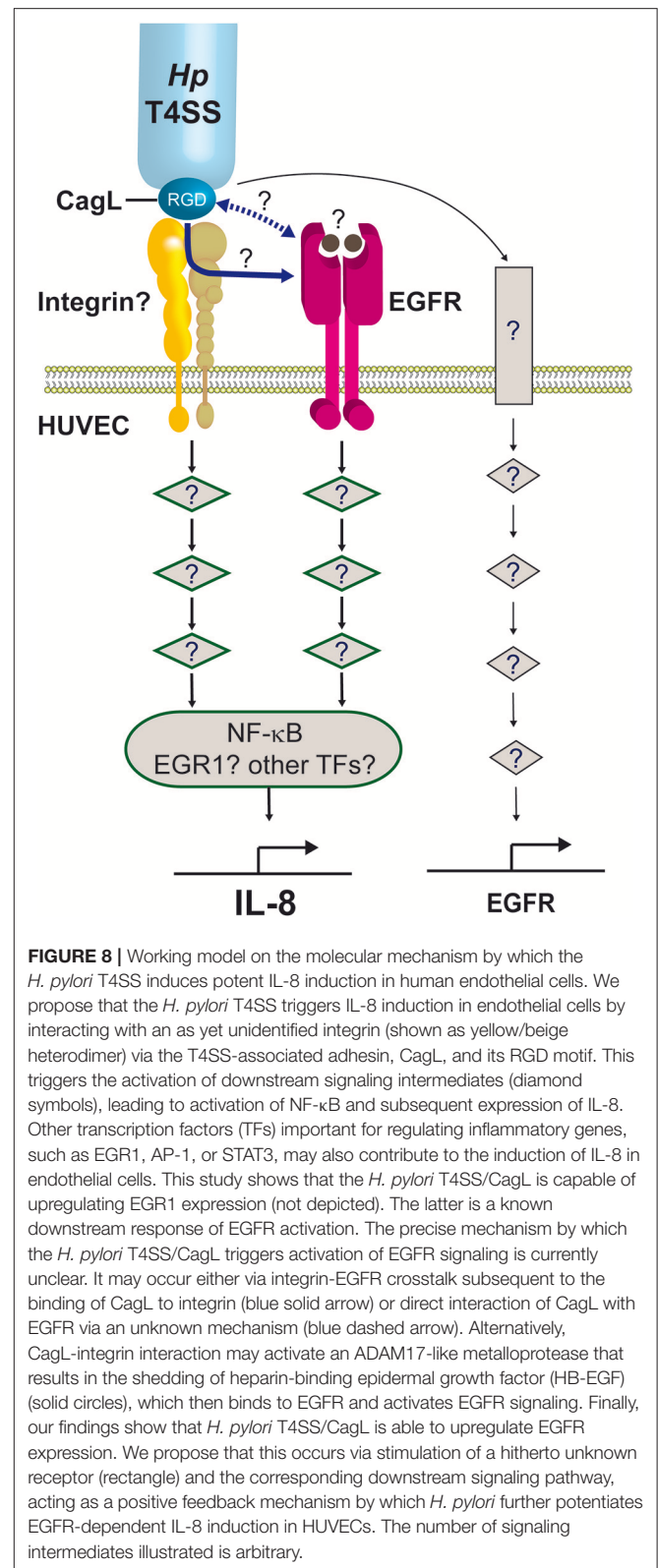
Previous studies using co-cultures of *H. pylori* and AGS gastric epithelial cells have suggested that the mechanistic roles of CagL in CagA translocation, elaboration of the T4SS pili and IL-8 induction are tightly coupled (Kwok et al., 2007; Gorrell et al., 2013). One could therefore argue that T4SS component(s) other than CagL is/are the direct stimulus of IL-8 induction and that the role of CagL in IL-8 induction is merely for facilitating the

assembly of the T4SS for IL-8 induction. Our data obtained using recombinant CagL protein, however, argue that CagL alone is sufficient for IL-8 induction in HUVECs and that the RGD motif of CagL is crucial for triggering the response. These findings provide strong evidence for a direct and essential role of CagL in IL-8 induction in HUVECs, reminiscent of that observed in *H. pylori* infection of gastric epithelial cells. Nevertheless, the possibility that other components of T4SS function cooperatively with CagL in cytokine induction cannot be discounted.

Our findings suggest that CagA and the CagA translocation process *per se* are not required for IL-8 or IL-6 induction by *H. pylori* during infection of endothelial cells. In line with these observations, a previous study indicated that the *H. pylori* T4SS but not CagA translocation *per se* was involved in stimulating transendothelial migration of T cells (Enarsson et al., 2005). This raises the intriguing possibility that *H. pylori* is unable to translocate CagA into endothelial cells, which is now supported by our findings that neither tyrosyl-phosphorylated CagA nor T4SS-associated pili structures is/are detected in/on *H. pylori*-infected HUVECs. It remains unclear whether this is a HUVEC-specific or cell type-specific phenomenon. Recently, several carcinoembryonic antigen-related cell adhesion molecules (CEACAMs) family members, including CEACAM1, have been shown to interact with the *H. pylori* adhesin HopQ; these interactions are important for CagA translocation into gastric epithelial cells (Javaheri et al., 2016; Koeniger et al., 2016). Given that the inflammatory cytokine TNF- α significantly upregulates CEACAM1 expression in HUVECs (Muenzner et al., 2000), it would be of interest to investigate in future studies whether translocation of CagA occurs in HUVECs after TNF- α stimulation. Moreover, subcellular fractionation should be performed to directly determine whether CagA can be translocated into the cytoplasm of HUVECs.

Our observation that the formation of T4SS-associated pili structures at the *H. pylori*-host cell interface is highly dependent on the host cell type is equally interesting. This is consistent with the notion that these appendages are assembled in response to highly specific host cell signals. Our findings that no such pili are visible at the interface of *H. pylori* and HUVECs suggest a non-essential role of these pili for IL-8 or IL-6 induction in *H. pylori*-infected HUVECs. However, one cannot rule out the possibility that T4SS pili are still formed albeit as rather inconspicuous structures that escape detection by scanning electron microscopy. A comparison of the interacting partners of the *H. pylori* T4SS in HUVECs with those in AGS cells may provide novel insights into the molecular mechanisms behind CagA translocation and the formation of the T4SS pili.

This study shows that whilst integrins $\alpha_5\beta_1$ and $\alpha_v\beta_3$ are dispensable for IL-8 induction by *H. pylori* in endothelial cells, EGFR plays a major role in the response. Given the essential requirement for CagL and its RGD motif in IL-8 induction, it is however tempting to speculate that an as yet unidentified integrin member might be involved in the binding of CagL. It is plausible that this integrin may transduce the downstream signals either independently of EGFR or via crosstalk with EGFR in mediating the proinflammatory response (Figure 8).



Transactivation of EGFR by *H. pylori* induces upregulation of the transcription factor, EGR1, in the gastric epithelial cell line AGS (Keates et al., 2005). EGR1 regulates many cellular

processes including proliferation, angiogenesis and inflammatory responses (Thiel and Cibelli, 2002), and its role as a downstream effector of EGFR is well-established (Cabodi et al., 2009). Whilst the involvement of *cagPAI* in *EGR1* upregulation has been described for *H. pylori* infection of AGS cells (Keates et al., 2005), this is the first report of *cagPAI* and CagL playing a role in *EGR1* upregulation in *H. pylori*-infected HUVECs. *EGR1* is known to function synergistically with NF- κ B in upregulating IL-8 production in prostate cancer cells (Ma et al., 2009), and that its expression can be regulated by EGFR-integrin crosstalk (Cabodi et al., 2009). Thus, it is tempting to speculate that *EGR1* might play a role in IL-8 induction in *H. pylori*-infected endothelial cells via a CagL/EGFR/integrin/*EGR1*/NF- κ B nexus (Figure 8). In line with this model, our results show that inhibition of NF- κ B activation in *H. pylori*-infected HUVECs only partially suppresses IL-8 induction. The relative contribution of *EGR1*, NF- κ B, and possibly also other transcriptional factors (e.g., AP-1, STAT3) to the inflammatory response, however, remains to be determined. Meanwhile, our findings indicate that *H. pylori* is capable of upregulating EGFR expression in HUVECs in a manner dependent on CagL and *cagPAI*, which may act as a positive feedback mechanism by which *H. pylori* further potentiates EGFR-dependent IL-8/6 induction in HUVECs (Figure 8). Taken together, the detailed molecular mechanism by which *H. pylori* T4SS and CagL activate RGD-motif-dependent and EGFR-dependent IL-8 induction is likely to be intricate, and is the subject of ongoing investigations in our laboratories.

IL-8 plays a pivotal role in inflammation, angiogenesis and cancer. By examining a previously unappreciated role of endothelial cells in eliciting a strong IL-8 response against *H. pylori* infection, this study provides important new insights into the pathogenesis of *H. pylori*-associated gastric diseases. In particular, our results support the notion that apart from gastric epithelial cells, endothelial cells may also contribute to *H. pylori*-induced inflammation. This study also reveals for the first time that the T4SS-associated adhesin, CagL, and the tyrosine kinase receptor EGFR play key roles in IL-8/IL-6 induction during *H. pylori* infection of endothelial cells; this not only pinpoints a novel mechanism by which the *H. pylori* T4SS may contribute to chronic inflammation but also highlights

the importance of CagL and EGFR as therapeutic targets for treatment against chronic gastritis and gastric cancer. Future work is required to further understand the molecular mechanism by which *H. pylori* activates EGFR in endothelial cells, the effect of endothelial cell polarity on IL-8/IL-6 induction, and the relative contribution of endothelial inflammatory signaling to gastric carcinogenesis.

AUTHOR CONTRIBUTIONS

MT, RG, RD, BJ, ED, and TK: designed the experiments; MT, JG, YX, VD, NC, RG, TK, and MR: generated experimental data; MT, JG, YX, RG, VD, NC, MR, BJ, ED, and TK: analyzed experimental data; RP, RD, and BJ: provided bacterial strains and reagents; MT, TK, and RG: wrote the manuscript and prepared the figures; JG, YX, VD, MR, RP, BJ, and ED: critically reviewed the manuscript.

FUNDING

This work was supported by the National Health and Medical Research Council Project Grant APP545983 and the Monash Research Accelerator Award (to TK). MT is a recipient of the Monash Postgraduate Scholarship and International Postgraduate Research Scholarship.

ACKNOWLEDGMENTS

We are grateful to the Monash Protein Purification Unit for assistance with the purification of CagL; Monash Micro Imaging staff, particularly Dr. Judy Callaghan and Mr. Chad Johnson, for invaluable advice. We wish to thank Associate Professor Richard L. Ferrero of the Hudson Institute of Medical Research, Australia, for his generous gift of the I κ B kinase inhibitor BMS-345541. Part of this work is included in a thesis submitted for the fulfillment of a Doctor of Philosophy degree by MT.

SUPPLEMENTARY MATERIAL

The Supplementary Material for this article can be found online at: <https://www.frontiersin.org/articles/10.3389/fcimb.2018.00022/full#supplementary-material>

REFERENCES

- Alghisi, G. C., Ponsonnet, L., and Rüegg, C. (2009). The integrin antagonist Cilengitide activates α v β 3, disrupts VE-cadherin localization at cell junctions and enhances permeability in endothelial cells. *PLoS ONE* 4:e4449. doi: 10.1371/journal.pone.0004449
- Amieva, M. R., Vogelmann, R., Covacci, A., Tompkins, L. S., Nelson, W. J., and Falkow, S. (2003). Disruption of the epithelial apical-junctional complex by *Helicobacter pylori* CagA. *Science* 300, 1430–1434. doi: 10.1126/science.1081919
- Aspholm, M., Olfat, F. O., Norden, J., Sonden, B., Lundberg, C., Sjöstrom, R., et al. (2006). SabA is the *H. pylori* hemagglutinin and is polymorphic in binding to sialylated glycans. *PLoS Pathog* 2:e110. doi: 10.1371/journal.ppat.0020110
- Backert, S., Ziska, E., Brinkmann, V., Zimny-Arndt, U., Fauconnier, A., Jungblut, P. R., et al. (2000). Translocation of the *Helicobacter pylori* CagA protein in gastric epithelial cells by a type IV secretion apparatus. *Cell. Microbiol.* 2, 155–164. doi: 10.1046/j.1462-5822.2000.00043.x
- Baranska, P., Jerczynska, H., Pawlowska, Z., Koziolkiewicz, W., and Cierniewski, C. S. (2005). Expression of integrins and adhesive properties of human endothelial cell line EA.hy 926. *Cancer Genomics Proteomics* 2, 265–269.
- Brandt, S., Kwok, T., Hartig, R., König, W., and Backert, S. (2005). NF- κ B activation and potentiation of proinflammatory responses by the *Helicobacter pylori* CagA protein. *Proc. Natl. Acad. Sci. U.S.A.* 102, 9300–9305. doi: 10.1073/pnas.0409873102
- Brooks, P. C., Clark, R. A. F., and Cheresh, D. A. (1994). Requirement of vascular integrin α v β 3 for angiogenesis. *Science* 264, 569–571. doi: 10.1126/science.7512751
- Burke, J. R., Pattoli, M. A., Gregor, K. R., Brassil, P. J., MacMaster, J. F., McIntyre, K. W., et al. (2003). BMS-345541 is a highly selective inhibitor of I κ B kinase that binds at an allosteric site of the enzyme and blocks

- NF- κ B-dependent transcription in mice. *J. Biol. Chem.* 278, 1450–1456. doi: 10.1074/jbc.M209677200
- Cabodi, S., Morello, V., Masi, A., Cicchi, R., Broggio, C., Distefano, P., et al. (2009). Convergence of integrins and EGF receptor signaling via PI3K/Akt/FoxO pathway in early gene Egr-1 expression. *J. Cell Physiol.* 218, 294–303. doi: 10.1002/jcp.21603
- Crabtree, J. E. (1996). Gastric mucosal inflammatory responses to *Helicobacter pylori*. *Aliment Pharmacol. Ther. Suppl.* 10, 29–37. doi: 10.1046/j.1365-2036.1996.22164003.x
- Ding, S.-Z., Cho, C.-H., and Lam, S.-K. (1997). *Helicobacter pylori* induces Interleukin-8 expression in endothelial cells and the signal pathway is protein tyrosine kinase dependent. *Biochem. Biophys. Res. Commun.* 240, 561–565. doi: 10.1006/bbrc.1997.7699
- Enarsson, K., Brisslert, M., Backert, S., and Quiding-Jarbrink, M. (2005). *Helicobacter pylori* induces transendothelial migration of activated memory T cells. *Infect. Immun.* 73, 761–769. doi: 10.1128/IAI.73.2.761-769.2005
- Fischer, W. (2011). Assembly and molecular mode of action of the *Helicobacter pylori* Cag type IV secretion apparatus. *FEBS J.* 278, 1203–1212. doi: 10.1111/j.1742-4658.2011.08036.x
- Fischer, W., Puls, J., Buhrdorf, R., Gebert, B., Odenbreit, S., and Haas, R. (2001). Systematic mutagenesis of the *Helicobacter pylori* cag pathogenicity island: essential genes for CagA translocation in host cells and induction of interleukin-8. *Mol. Microbiol.* 42, 1337–1348. doi: 10.1046/j.1365-2958.2001.02714.x
- Franco, A. T., Israel, D. A., Washington, M. K., Krishna, U., Fox, J. G., Rogers, A. B., et al. (2005). Activation of β -catenin by carcinogenic *Helicobacter pylori*. *Proc. Natl. Acad. Sci. U.S.A.* 102, 10646–10651. doi: 10.1073/pnas.0504927102
- Gabius, H. J., van de Wouwer, M., Andre, S., and Villalobo, A. (2012). Down-regulation of the epidermal growth factor receptor by altering N-glycosylation: emerging role of β 1,4-galactosyltransferases. *Anticancer Res.* 32, 1565–1572.
- Gao, B., Wang, Y., and Tsan, M. F. (2006). The heat sensitivity of cytokine-inducing effect of lipopolysaccharide. *J. Leukoc. Biol.* 80, 359–366. doi: 10.1189/jlb.1205738
- Gorrell, R. J., Guan, J., Xin, Y., Tafreshi, M. A., Hutton, M. L., McGuckin, M. A., et al. (2013). A novel NOD1- and CagA-independent pathway of interleukin-8 induction mediated by the *Helicobacter pylori* type IV secretion system. *Cell. Microbiol.* 15, 554–570. doi: 10.1111/cmi.12055
- Hall, D. E., Reichardt, L. F., Crowley, E., Holley, B., Moezzi, H., Sonnenberg, A., et al. (1990). The α 1 β 1 and α 6 β 1 integrin heterodimers mediate cell attachment to distinct sites on laminin. *J. Cell Biol.* 110, 2175–2184. doi: 10.1083/jcb.110.6.2175
- He, Y., Ryu, T., Shrestha, N., Yuan, T., Kim, H., Shrestha, H., et al. (2016). Interaction of EGFR to δ -catenin leads to δ -catenin phosphorylation and enhances EGFR signaling. *Sci. Rep.* 6:21207. doi: 10.1038/srep21207
- Hutton, M. L., Kaparakis-Liaskos, M., Turner, L., Cardona, A., Kwok, T., and Ferrero, R. L. (2010). *Helicobacter pylori* exploits cholesterol-rich microdomains for induction of NF- κ B-dependent responses and peptidoglycan delivery in epithelial cells. *Infect. Immun.* 78, 4523–4531. doi: 10.1128/IAI.00439-10
- Innocenti, M., Thoreson, A. C., Ferrero, R. L., Stromberg, E., Bolin, I., Eriksson, L., et al. (2002). *Helicobacter pylori*-induced activation of human endothelial cells. *Infect. Immun.* 70, 4581–4590. doi: 10.1128/IAI.70.8.4581-4590.2002
- Ito, T., Kobayashi, D., Uchida, K., Takemura, T., Nagaoka, S., Kobayashi, I., et al. (2008). *Helicobacter pylori* invades the gastric mucosa and translocates to the gastric lymph nodes. *Lab. Invest.* 88, 664–681. doi: 10.1038/labinvest.2008.33
- Javaheri, A., Kruse, T., Moonens, K., Mejias-Luque, R., Debraekeleer, A., Asche, C. I., et al. (2016). *Helicobacter pylori* adhesin HopQ engages in a virulence-enhancing interaction with human CEACAMs. *Nat. Microbiol.* 2:16189. doi: 10.1038/nmicrobiol.2016.189
- Keates, S., Keates, A. C., Katchar, K., Peek, R. M. Jr., and Kelly, C. P. (2007). *Helicobacter pylori* induces up-regulation of the epidermal growth factor receptor in AGS gastric epithelial cells. *J. Infect. Dis.* 196, 95–103. doi: 10.1086/518440
- Keates, S., Keates, A. C., Nath, S., Peek, R. M. Jr., and Kelly, C. P. (2005). Transactivation of the epidermal growth factor receptor by cag+ *Helicobacter pylori* induces upregulation of the early growth response gene Egr-1 in gastric epithelial cells. *Gut* 54, 1363–1369. doi: 10.1136/gut.2005.066977
- Keates, S., Sougioultzis, S., Keates, A. C., Zhao, D., Peek Jr, R. M., Shaw, L. M., et al. (2001). cag+ *Helicobacter pylori* induce transactivation of the epidermal growth factor receptor in AGS gastric epithelial cells. *J. Biol. Chem.* 276, 48127–48134. doi: 10.1074/jbc.M107630200
- Koeniger, V., Holsten, L., Harrison, U., Busch, B., Loell, E., Zhao, Q., et al. (2016). *Helicobacter pylori* exploits human CEACAMs via HopQ for adherence and translocation of CagA. *Nat. Microbiol.* 2:16188. doi: 10.1038/nmicrobiol.2016.188
- Kusters, J. G., van Vliet, A. H., and Kuipers, E. J. (2006). Pathogenesis of *Helicobacter pylori* infection. *Clin. Microbiol. Rev.* 19, 449–490. doi: 10.1128/CMR.00054-05
- Kwok, T., Backert, S., Schwarz, H., Berger, J., and Meyer, T. F. (2002). Specific entry of *Helicobacter pylori* into cultured gastric epithelial cells via a zipper-like mechanism. *Infect. Immun.* 70, 2108–2120. doi: 10.1128/IAI.70.4.2108-2120.2002
- Kwok, T., Zabler, D., Urman, S., Rohde, M., Hartig, R., Wessler, S., et al. (2007). *Helicobacter* exploits integrin for type IV secretion and kinase activation. *Nature* 449, 862–866. doi: 10.1038/nature06187
- Lu, H., Wu, J. Y., Kudo, T., Ohno, T., Graham, D. Y., and Yamaoka, Y. (2005). Regulation of interleukin-6 promoter activation in gastric epithelial cells infected with *Helicobacter pylori*. *Mol. Biol. Cell* 16, 4954–4966. doi: 10.1091/mbc.E05-05-0426
- Ma, J., Ren, Z., Ma, Y., Xu, L., Zhao, Y., Zheng, C., et al. (2009). Targeted knockdown of EGR-1 inhibits IL-8 production and IL-8-mediated invasion of prostate cancer cells through suppressing EGR-1/NF- κ B synergy. *J. Biol. Chem.* 284, 34600–34606. doi: 10.1074/jbc.M109.016246
- Muenzner, P., Dehio, C., Fujiwara, T., Achtman, M., Meyer, T. F., and Gray-Owen, S. D. (2000). Carcinoembryonic antigen family receptor specificity of *Neisseria meningitidis* Opa variants influences adherence to and invasion of proinflammatory cytokine-activated endothelial cells. *Infect. Immun.* 68, 3601–3607. doi: 10.1128/IAI.68.6.3601-3607.2000
- Mustapha, P., Paris, I., Garcia, M., Tran, C. T., Cremniter, J., Garnier, M., et al. (2014). Chemokines and antimicrobial peptides have a cag-dependent early response to *Helicobacter pylori* infection in primary human gastric epithelial cells. *Infect. Immun.* 82, 2881–2889. doi: 10.1128/IAI.01517-13
- Naumann, M., and Crabtree, J. E. (2004). *Helicobacter pylori*-induced epithelial cell signalling in gastric carcinogenesis. *Trends Microbiol.* 12, 29–36. doi: 10.1016/j.tim.2003.11.005
- Necchi, V., Candusso, M. E., Tava, F., Luinetti, O., Ventura, U., Fiocca, R., et al. (2007). Intracellular, intercellular, and stromal invasion of gastric mucosa, preneoplastic lesions, and cancer by *Helicobacter pylori*. *Gastroenterology* 132, 1009–1023. doi: 10.1053/j.gastro.2007.01.049
- Ramakers, C., Ruijter, J. M., Deprez, R. H., and Moorman, A. F. (2003). Assumption-free analysis of quantitative real-time polymerase chain reaction (PCR) data. *Neurosci. Lett.* 339, 62–66. doi: 10.1016/S0304-3940(02)01423-4
- Rohde, M., Puls, J., Buhrdorf, R., Fischer, W., and Haas, R. (2003). A novel sheathed surface organelle of the *Helicobacter pylori* cag type IV secretion system. *Mol. Microbiol.* 49, 219–234. doi: 10.1046/j.1365-2958.2003.03549.x
- Ruijter, J. M., Ramakers, C., Hoogaars, W. M., Karlen, Y., Bakker, O., van den Hoff, M. J., et al. (2009). Amplification efficiency: linking baseline and bias in the analysis of quantitative PCR data. *Nucleic Acids Res.* 37:e45. doi: 10.1093/nar/gkp045
- Segal, E. D., Cha, J., Lo, J., Falkow, S., and Tompkins, L. S. (1999). Altered states: involvement of phosphorylated CagA in the induction of host cellular growth changes by *Helicobacter pylori*. *Proc. Natl. Acad. Sci. U.S.A.* 96, 14559–14564. doi: 10.1073/pnas.96.25.14559
- Semino-Mora, C., Doi, S. Q., Marty, A., Simko, V., Carlstedt, I., and Dubois, A. (2003). Intracellular and interstitial expression of *Helicobacter pylori* virulence genes in gastric precancerous intestinal metaplasia and adenocarcinoma. *J. Infect. Dis.* 187, 1165–1177. doi: 10.1086/368133
- Shaffer, C. L., Gaddy, J. A., Loh, J. T., Johnson, E. M., Hill, S., Hennig, E. E., et al. (2011). *Helicobacter pylori* exploits a unique repertoire of type iv secretion system components for pilus assembly at the bacteria-host cell interface. *PLoS Pathog.* 7:e1002237. doi: 10.1371/journal.ppat.1002237
- Sipponen, P. (1993). Long-term evaluation of *Helicobacter pylori*-associated chronic gastritis. *Eur. J. Gastroenterol. Hepatol.* 5(Suppl. 1), S93–S97.

- Stein, M., Rappuoli, R., and Covacci, A. (2000). Tyrosine phosphorylation of the *Helicobacter pylori* CagA antigen after cag-driven host cell translocation. *Proc. Natl. Acad. Sci. U.S.A.* 97, 1263–1268. doi: 10.1073/pnas.97.3.1263
- Thiel, G., and Cibelli, G. (2002). Regulation of life and death by the zinc finger transcription factor Egr-1. *J. Cell Physiol.* 193, 287–292. doi: 10.1002/jcp.10178
- Witta, S. E., Dziadziuszko, R., Yoshida, K., Hedman, K., Varella-Garcia, M., Bunn, P. A. Jr., et al. (2009). ErbB-3 expression is associated with E-cadherin and their coexpression restores response to gefitinib in non-small-cell lung cancer (NSCLC). *Ann. Oncol.* 20, 689–695. doi: 10.1093/annonc/mdn703
- Zhu, X. F., Liu, Z. C., Xie, B. F., Li, Z. M., Feng, G. K., Yang, D., et al. (2001). EGFR tyrosine kinase inhibitor AG1478 inhibits cell proliferation and arrests cell cycle in nasopharyngeal carcinoma cells. *Cancer Lett.* 169, 27–32. doi: 10.1016/S0304-3835(01)00547-X

Conflict of Interest Statement: The authors declare that the research was conducted in the absence of any commercial or financial relationships that could be construed as a potential conflict of interest.

Copyright © 2018 Tafreshi, Guan, Gorrell, Chew, Xin, Deswaerte, Rohde, Daly, Peek, Jenkins, Davies, and Kwok. This is an open-access article distributed under the terms of the Creative Commons Attribution License (CC BY). The use, distribution or reproduction in other forums is permitted, provided the original author(s) and the copyright owner are credited and that the original publication in this journal is cited, in accordance with accepted academic practice. No use, distribution or reproduction is permitted which does not comply with these terms.