



# Induced pluripotent stem cells: applications in regenerative medicine, disease modeling, and drug discovery

Vimal K. Singh<sup>1\*</sup>, Manisha Kalsan<sup>2</sup>, Neeraj Kumar<sup>2</sup>, Abhishek Saini<sup>2</sup> and Ramesh Chandra<sup>3</sup>

<sup>1</sup> INSPIRE Faculty, Stem Cell Research Laboratory, Department of Biotechnology, Delhi Technological University, Delhi, India

<sup>2</sup> Stem Cell Research Laboratory, Department of Biotechnology, Delhi Technological University, Delhi, India

<sup>3</sup> B. R. Ambedkar Centre for Biomedical Research, University of Delhi, Delhi, India

## Edited by:

Thimios Mitsiadis, University of Zurich, Switzerland

## Reviewed by:

Eumorphia Remboutsika, Biomedical Sciences Research Center "Alexander Fleming," Greece  
Marco Emilio Bianchi, Università Vita Salute San Raffaele, Italy  
Nicola Baldini, University of Bologna, Italy

## \*Correspondence:

Vimal K. Singh, Stem Cell Research Laboratory, Department of Biotechnology, Delhi Technological University, Shahbad Daultapur, Bawana Road, Delhi-110042, India  
e-mail: vim\_kissor@yahoo.co.in; vimalkishorsingh@gmail.com; vimalksingh@dce.ac.in

Recent progresses in the field of Induced Pluripotent Stem Cells (iPSCs) have opened up many gateways for the research in therapeutics. iPSCs are the cells which are reprogrammed from somatic cells using different transcription factors. iPSCs possess unique properties of self renewal and differentiation to many types of cell lineage. Hence could replace the use of embryonic stem cells (ESC), and may overcome the various ethical issues regarding the use of embryos in research and clinics. Overwhelming responses prompted worldwide by a large number of researchers about the use of iPSCs evoked a large number of people to establish more authentic methods for iPSC generation. This would require understanding the underlying mechanism in a detailed manner. There have been a large number of reports showing potential role of different molecules as putative regulators of iPSC generating methods. The molecular mechanisms that play role in reprogramming to generate iPSCs from different types of somatic cell sources involves a plethora of molecules including miRNAs, DNA modifying agents (viz. DNA methyl transferases), NANOG, etc. While promising a number of important roles in various clinical/research studies, iPSCs could also be of great use in studying molecular mechanism of many diseases. There are various diseases that have been modeled by using iPSCs for better understanding of their etiology which maybe further utilized for developing putative treatments for these diseases. In addition, iPSCs are used for the production of patient-specific cells which can be transplanted to the site of injury or the site of tissue degeneration due to various disease conditions. The use of iPSCs may eliminate the chances of immune rejection as patient specific cells may be used for transplantation in various engraftment processes. Moreover, iPSC technology has been employed in various diseases for disease modeling and gene therapy. The technique offers benefits over other similar techniques such as animal models. Many toxic compounds (different chemical compounds, pharmaceutical drugs, other hazardous chemicals, or environmental conditions) which are encountered by humans and newly designed drugs may be evaluated for toxicity and effects by using iPSCs. Thus, the applications of iPSCs in regenerative medicine, disease modeling, and drug discovery are enormous and should be explored in a more comprehensive manner.

**Keywords: iPSC, reprogramming, pluripotency, differentiation, disease modeling, drug discovery, gene therapy**

## INTRODUCTION

Discovery of self-renewal by any living cell was one of the major breakthrough reported by Till and McCulloch (1961) who while subjecting the mice with lethal doses of radiation followed by injection of bone marrow cells found that these cells formed clumps due to cells cloned from them which was the main reason of survival of the mice (Till and McCulloch, 1961). Later studies defined their potential for differentiation into different cell types and self-renewal without senescence, and termed as Stem Cells. Stem cells can be defined on the basis of their origin and potency into Adult Stem Cells and Embryonic Stem Cells (ESC), similarly, considering their potency as the base of classification, stem cells can be classified into unipotent, multipotent, oligopotent,

pluripotent, and totipotent (Lan et al., 2012). Totipotent are those which can differentiate into embryonic as well as extra-embryonic tissues such as the placenta. Pluripotent stem cells are those which can differentiate into other cells of the adult body. This property exists for only a specific time period of pre-implantation development in the cells forming Inner Cell Mass (ICM). As the cells differentiate into other cell lineages, their self renewing potential decreases due to various epigenetic changes which leads to the loss of pluripotency. Further research conducted on human stem cells (HSCs) made burgeoning use of human ESCs for which embryo needed to be isolated on regular basis that evoked several ethical issues among socio-research communities. There have been efforts by different research groups

to bypass these ethical/technical problems. Subsequent studies demonstrated many advancements in the related techniques such as cloning in frog (Gurdon, 1962), generation of mouse Stem Cells (SCs) (Evans and Kaufman, 1981), cloning in sheep (Wilmut et al., 1997), generation of HSCs (Thomson et al., 1998), and development of Embryonic stem cell fusion technique (Tada et al., 2001). These findings contributed greatly to the development of cells that could eliminate ethical issues (Figure 1). However, the major breakthrough came in 2006 when Takahashi and Yamanaka introduced the concept of induced pluripotent stem cells (iPSCs) by generating stem cells that were having properties relating to ESCs. iPSCs were generated by using a combination of 4 reprogramming factors, including Oct4 (Octamer binding transcription factor-4), Sox2 (Sex determining region Y)-box 2, Klf4 (Krüppel Like Factor-4), and c-Myc and were demonstrated both self-renewing and differentiating like ESCs, and thus, could be used as an alternative for hESCs in various clinics/research. Since then, a number of different reprogramming factors/methods have been established. iPSCs generation may employ combination of different reprogramming factors, viz., a cocktail of various reprogramming factors, direct use of proteins, miRNA, peptide etc. Factors (LIN28 + Nanog, Esrrb, Pax5 shRNA, C/EBPa, p53 siRNA, UTF1, DNMT shRNA, Wnt3a, SV40 LT(T), hTERT) or chemicals (BIX-01294, BayK8644, RG108, AZA, dexamethasone, VPA, TSA, SAHA, PD025901 + CHIR99021(2i), A-83-01) have been found which are able to replace one or the other reprogramming factors from basal reprogramming factors or to enhance the efficiency of reprogramming (Table 1) (Yu et al., 2007; Dimos et al., 2008; Hanna et al., 2008; Huangfu et al., 2008a,b; Mali et al., 2008; Marson et al., 2008; Mikkelsen et al., 2008; Park et al., 2008a; Shi et al., 2008a,b; Silva et al., 2008; Zhao et al., 2008; Zhou et al., 2008; Feng et al., 2009; Li et al., 2009; Fong et al., 2011).

Similarly, there have been significant advancements in methods/techniques employed to deliver these factors such as Nuclear

Transfer, Transcription Factors (Oct4, Sox2, Klf4 and c-Myc) and different reprogramming technologies, including Integration viral vectors and Integration free vectors (Plasmid DNA and transferase, Viral vectors, and Excision of integrated transgenes) (Hochedlinger and Jaenisch, 2002; Takahashi and Yamanaka, 2006a; Takahashi et al., 2006b; Yu et al., 2007; Stadtfeld et al., 2008a,b,a,b; Fusaki et al., 2009; Gonzalez et al., 2009; Yusa et al., 2009) (Table 2). The various sources, delivery methods and their cognate approaches with different combinations of transcription factors differ significantly in their efficiency (Tables 2, 3).

Since their discovery, iPSCs have been used in many research and clinical studies including *disease modeling*, *regenerative medicine*, and *drug discovery/drug cytotoxicity studies*. For disease modeling, somatic cells possessing the characteristics of diseased cells from patient are used for the generation of iPSCs and are further utilized for studying the diseases. Similarly, iPSCs are widely utilized for the regeneration of tissue-specific cells for the transplantation to patients of various injuries or degenerative diseases. Studies like drug discovery which implies screening of small molecules, testing of toxicity for assessment of safety, have successfully exploited iPSCs based technique. A large number of reports have accumulated indicating a need for discussing various aspects of these techniques and their future perspectives in clinical/research studies. This article focuses the importance of these cells for therapeutics and research benefits in different biological sciences.

## REGULATORY FACTORS OF iPSCs GENERATION: AN OVERVIEW

### GENERATION OF iPSCs

Theoretically, iPSCs can be generated by using any somatic cell by employing appropriate reprogramming factors and most convenient method for their introduction to somatic cells. iPSC



FIGURE 1 | Historical timeline showing events that led to the development of iPSCs and the recent advances that have occurred in the field.

**Table 1 | Many factors and chemicals are able to replace the basal transcriptions factors used for reprogramming (O- Oct4; S- Sox2; K- Klf4; M- c-Myc; M\*- N-Myc).**

Factor/chemical	Function	Able to replace	References
Nanog	ESC-specific transcription factor	Together with Lin28, able of replacing K and M	Yu et al., 2007
Lin28	ESC-specific RNA-binding protein	Together with Nanog, able of replacing K and M	Yu et al., 2007
Esrrb	Orphan nuclear receptor	K	Feng et al., 2009
SV40 LT (T)	SV40 large T antigen used for cell transformation	K; M* and Lin28, Nanog	Mali et al., 2008
BIX-01294	Inhibitor of G9a histone methyltransferase	S, O	Shi et al., 2008a,b
VPA	Inhibitor of histone deacetylase	K and M	Huangfu et al., 2008a

**Table 2 | Different delivery methods for transfer of different combinations of transcription factors have different efficiencies of reprogramming (O- Oct4; S- Sox2; K- Klf4; M- c-Myc).**

	Reprogramming	Factors	Cell type	Efficiency %	References
Integrating methods	Retroviral transduction	OSKM	Mouse fibroblast	0.001–1	Takahashi and Yamanaka, 2006a
		OSK + VPA	Neonatal	1	Huangfu et al., 2008a
	Lentiviral	OSKM	Human fibroblast	0.1–1	Yu et al., 2007
		OK + parnate + CHIR99021	Neonatal	0.02	Li et al., 2009
Inducible lentiviral	OSKM	Human fibroblast	0.1–2	Maherali et al., 2008	
Non-integrating methods	Sendai virus	OSKM	Human fibroblast	~0.1	Fusaki et al., 2009
	Adeno viral transduction	OSKM	Mouse fibroblast	~0.001	Stadtfield et al., 2008a
	Plasmid DNA transfer	OSK	Fibroblast	0.00	Okita et al., 2008
	lox p lentivirus	OSKM	Fibroblast	0.1–1	Somers et al., 2010
	PiggyBAC	OSKM	Fibroblast	0.01	Woltjen et al., 2009
	Polyarginine tagged polypeptide	OSKM	Neonatal fibroblast	0.00	Kim et al., 2009b
	RNA modified synthetic mRNA	OSKM	Human fibroblast	4.40	Warren et al., 2010

generation is reported by using cells from different sources such as fibroblasts, cord blood, peripheral blood (Table 1). There are large numbers of reports showing the whole process in a detailed manner that can be summarized in three major steps—(i) establishment of initial cell culture, (ii) induction of iPSCs and, (iii) characterization and expansion of iPSCs (Figure 2). Firstly, the source cells are isolated and cultured. The reprogramming factors are then introduced into those cultured cells. There are two types of methods for the introduction of reprogramming factors- Integrating Systems (retroviral, lentiviral, inducible lentiviral) and Non-Integrating Methods [non-intergrating viral vectors (sendai virus, adeno virus), plasmid DNA transfer, transgenes, recombinant proteins, synthetic mRNA] (Table 2). These transfected cells are incubated on feeder layers (a number of cells have been demonstrated as feeder cells, example., fibroblasts, keratinocytes) under appropriate media conditions and after the expression of these reprogramming factors, generation of

iPSCs occurs. The cultured iPSC colonies can be characterized by different morphological and physiochemical methods. The morphological examination of iPSCs can be done on the basis of round shape, large nucleolus, and scant cytoplasm of iPSCs as similar to ESCs (Thomson et al., 1998). Reprogrammed colonies are tightly packed, sharp edged, flat, mitotically very active due to the possession of property of self renewal. Though it is hard to define iPSCs solely on the basis of their morphology, these characteristics give a quick idea about their states. Further, iPSCs may be defined on the basis of expression of different cell surface proteins (SSEA-4, alkaline phosphatase) and transcription factors Oct4, Sox2, Nanog which can also be used for the characterization (Adewumi et al., 2007). Figure 3 describes the necessary requirements (Yamanaka's cocktail, alternative factors or chemicals for the replacement of one or more basal reprogramming factors enhancement of efficiency of generation) for the generation of iPSCs.

**Table 3 | Different cell sources and different combinations of reprogramming factors have been used by different groups for reprogramming to iPSCs (O- Oct4; S- Sox2; K- Klf4; M- c-Myc; N- Nanog, L- Lin28).**

Type of cells	Reprogramming factors	References
Fibroblast	OSKM	Takahashi and Yamanaka, 2006a
	OSLN	Yu et al., 2007
Keratinocytes	OSKM	Aasen et al., 2008
Cord blood endothelial cells	OSLN	Haase et al., 2009
Cord blood stem cells	OSKM	Ye et al., 2009
Neural stem cells	O	Kim et al., 2009a
Melanocytes	OSKM	Utikal et al., 2009
Amniotic cells	OSKM	Li et al., 2009
Adipose derived stem cells	OSKM	Sugii et al., 2010
Hepatocytes	OSKM	Liu et al., 2010
Circulating T cells	OSKM	Seki et al., 2010
Astrocytes	OSKM	Ruiz et al., 2010
Peripheral blood	OSKM	Kunisato et al., 2011
Kidney mesangial cells	OSKM	Song et al., 2011
Urine cells	OS	Zhou et al., 2012

#### DIFFERENT FACTORS THAT PLAY ROLE IN THE GENERATION OF iPSCs

As discussed above, the generation of iPSCs from somatic cells requires the introduction of reprogramming factors into the somatic cells. This can be done by two types of methods—Integrating Viral Vector Systems and Non-Integrating Systems. Integrating methods are those in which the viral vector gets integrated into the host cell genome. The use of retrovirus and lentivirus comes under this category (Takahashi et al., 2006b; Brambrink et al., 2008; Stadtfeld et al., 2008a,b). This method has a high efficiency but it poses the risks of cancer formation and hence, different approaches have also been worked on. Non-Integrating methods are those in which no integration in host cell genome occurs. Different approaches such as viral vectors (Adeno virus and Sendai virus), Plasmid DNA, and the use of RNA and proteins come under this category. Adeno virus (dsDNA) and Sendai virus (RNA) are non-integrating viral vectors which have been used in iPSC generation (Takahashi et al., 2006b; Stadtfeld et al., 2008a; Fusaki et al., 2009). Plasmids such as oriP/EBNA1 (derived from Epstein-bar virus), containing reprogramming factors has been used for reprogramming, but the efficiency was found to be low (Yu et al., 2009). Direct delivery of reprogramming proteins has also been carried out by fusing them with a cell penetrating peptide (Kim et al., 2009b). Yashioka et al. used a different approach using a single self replicating RNA replicon which expressed high levels of Yamanaka's factors for transfection into fibroblasts to be reprogrammed into iPSCs and found the iPSCs to be having all properties of pluripotent stem cells (Yoshioka et al., 2013).

Once the reprogramming factors are delivered to the somatic cells, they come into play for transforming those somatic cells into

iPSCs. Not only they have their individual roles, but they interact with each other complementarily.

#### APPLICATIONS OF iPSCs

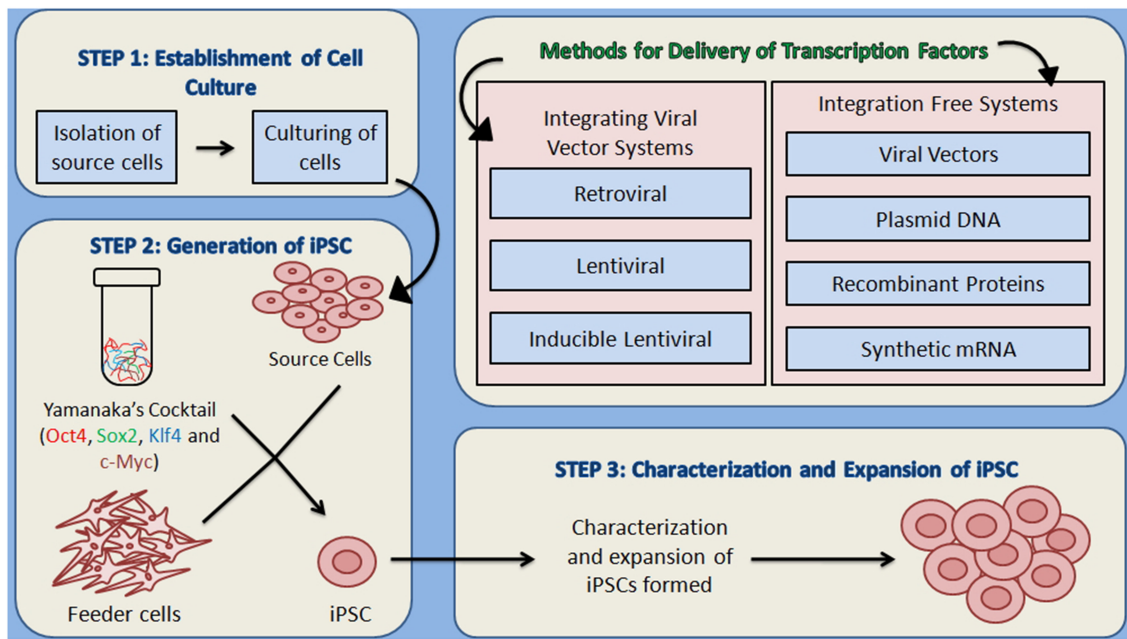
The treatment of many diseases is difficult because of the lack of information about the mechanisms that play a role in the disease progression. For this reason, diseases need to be modeled so that treatment could be developed aiming the main cause of the disease. There are a large number of disease testing models which have developed during previous era. Some of them are capable of mimicking human cellular microenvironment and metabolism to some extent. Many animal models such as rat, mice, dogs monkey, dog, and primates have been used for disease modeling. However, the use of animals as disease models is limited due to existing variability in the genetic make-up of them that is highly responsible for the biological functions and hence differences are exhibited while compared with human individuals. Secondly, the problem further gets complicated when the individuals are of two different species. Different species have different genetic makeup and hence different proteins. And thus, none of the animal model is able to fully mimic the human cell microenvironment. So, a different approach which can provide the same environment as in human cells is required and iPSCs pose to be a good alternative with some advantages as well. In case of iPSCs, there is no need of proliferation again and again, and, their derivatives are functional *in-vitro* as well as *in-vivo* after transplantation. Induced pluripotent stem cells are widely used in therapeutics for disease modeling, regenerative medicine, and drug discovery (Figure 4).

#### DISEASE MODELING

The use of iPSCs for disease modeling is based on the fact that these cells are capable of self renewing and that these cells can differentiate into all types of cells of the human body which can be utilized for the preparation of different disease models to study those diseases. Moreover, a patient specific iPSC could be of enormous use as far as development of specific therapeutics regimen/drug is concerned. By combining 3D culture with extracellular matrix proteins, *in-vivo* microenvironment can be mimicked. Lee et al. used iPSCs for the modeling of pathogenesis in Familial Dysautonomia (Lee et al., 2009). Since then, there have been many cases in which iPSCs have helped out in studying various mechanisms that play role in different diseases, a few have been described below.

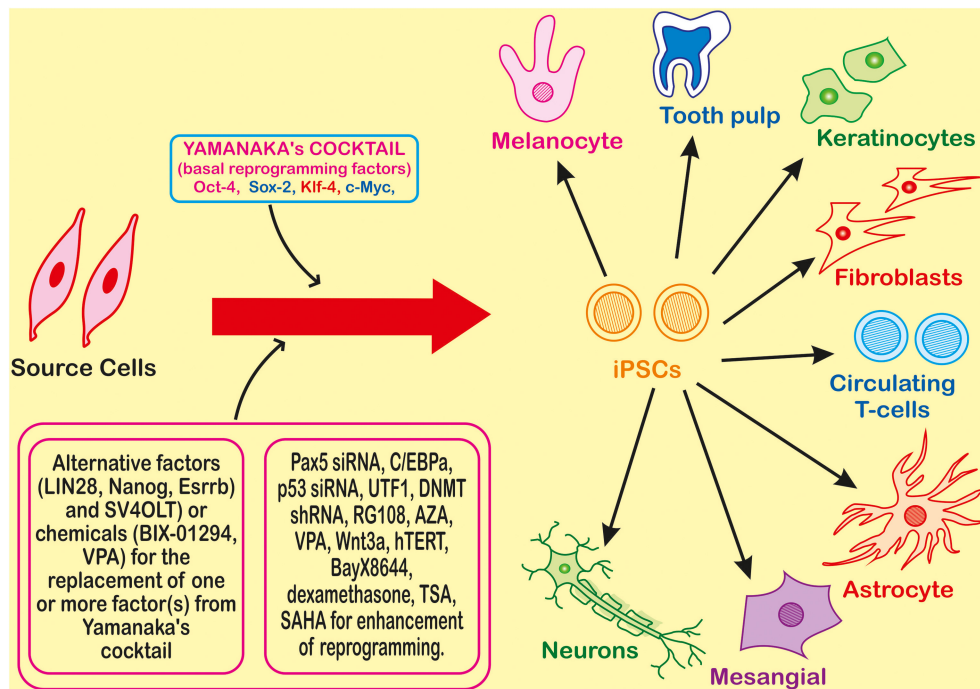
Moad et al. used human prostate and urinary tract cells for the formation of iPSCs and further for studying the mechanisms that regulate the differentiation of prostate and urinary tract cells. With their study, they reported the first successful reprogramming of bladder, prostate and ureter stromal fibroblasts into a pluripotent state and concluded that iPSCs generated from prostate and urinary tract had better efficiency of differentiation to cells of prostate and urinary tract as compared to iPSCs derived from skin fibroblasts which showed that organ of origin plays an important role in terms of efficiency of differentiation (Moad et al., 2013).

Various types of diseases which are caused by some deficiency have been studied by using iPSCs. Park et al. used



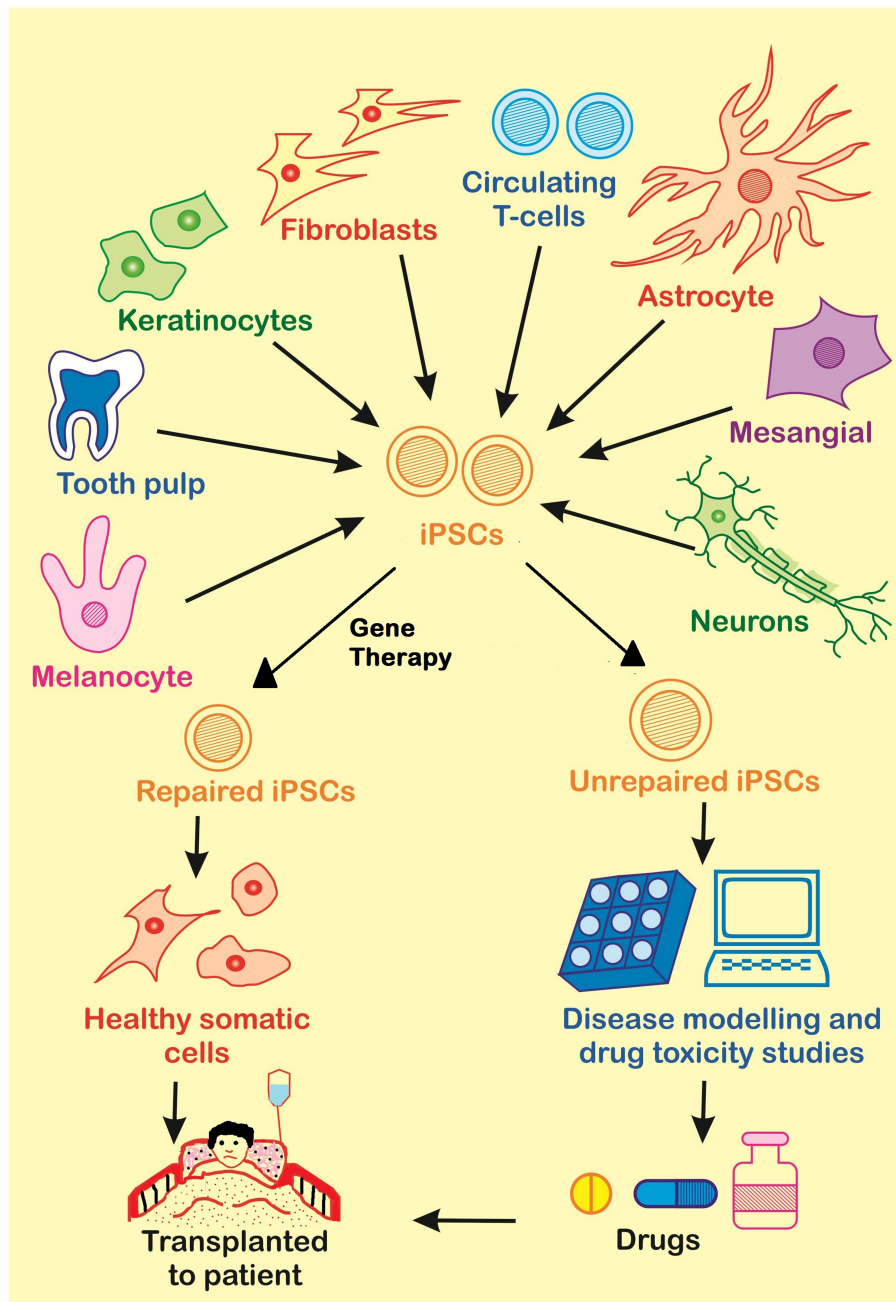
**FIGURE 2 | An overview of the methodology for the generation of iPSCs.** (1) Establishment of culture: the source cells are cultured for further use as host cells for the delivery of reprogramming proteins. (2) The cultured source cells are then transfected with the four factors from Yamanaka's cocktail and incubated on feeder layers that provide the nourishment to host cells and are responsible for the formation of extra

cellular matrix, under suitable conditions of media. Two types of methods for the delivery of reprogramming factors into the somatic cells can be used- Integrating viral vector systems and Non-Integrating methods. (3) After the formation of iPSCs, they are characterized by different morphological and physicochemical analyses, which is followed by the expansion of iPSCs.



**FIGURE 3 | Introduction of the four transcription factors (Oct-4, Sox-2, Klf-4, and c-Myc) leads to reprogramming of a somatic cell to an Induced Pluripotent Stem Cell (iPSC) which can further differentiate into different**

**types of cells.** Many factors or chemicals are able to replace one of the factors from the basic four factors required for reprogramming, and for the enhancement many other small molecule chemicals or factor are also used.



**FIGURE 4 | There are many applications of iPSCs in the fields of gene therapy, disease modeling and drug discovery.** Somatic cells from the patient are used for the generation of diseased iPSCs. These diseased iPSCs

may be repaired by Gene Therapy and further used for the generation of healthy somatic cells to be transplanted to the patient, or they may be used to produce unrepaired somatic cells for disease modeling or drug screening.

iPSCs from patients of various diseases like *Adenosine Deaminase Deficiency-related Severe Combined ImmunoDeficiency (ADA-SCID)*, *Shwachman-Bodian-Diamond syndrome (SBDS)*, *Gaucher disease (GD) type III* for the study of disease models and drug discovery. They used dermal fibroblasts or bone-marrow derived mesenchymal stem cells for the generation of human iPSCs by the transduction of all four or three (excluding c-Myc) transcription factors. It was found from their study that ADA-SCID,

SBDS, and Gaucher's disease type III are inherited in a classical Mendelian Inheritance manner like congenital disorders which are autosomal recessive. These diseases were shown to be caused by point mutations in those genes which were vital for normal hematopoiesis and immunological function. They also reported the point mutations in ADA-SCID, SBDS, and GD type III. They also studied *Duchenne (DMD) and Becker muscular dystrophy (BMD)*, *Parkinson disease (PD)*, *Huntington disease (HD)*,

*juvenile-onset, type 1 diabetes mellitus (JDM), Down syndrome (DS) /trisomy 21 and the carrier state of Lesch-Nyhan syndrome* (Park et al., 2008b).

There are many syndromes which are caused by the existence of one or more extra copies of a chromosome. Down's syndrome is one such example. Briggs et al. used iPSCs for the identification of molecular networks that drive the different aspects related to pathogenesis in Down's Syndrome. iPSCs in combination with microarray and RNA sequencing technology, can be used to generate phenotype-genotype maps of complex diseases by linking various defects with phenotypes, like in Down's Syndrome using Chromosome engineering of Down Syndrome-iPSCs (Briggs et al., 2013).

Neurodegenerative diseases have also been studied using iPSCs as disease models. Parkinson's Disease (PD) is a very common neurodegenerative disease, in which, dopaminergic neurons of substantia nigra (a structure in mid brain) get lost and formation of Lewy's bodies (inclusions in the cytoplasm of neurons all over the body) occurs. Treatment of this disease had not been possible due to the reason that by the time, PD gets clinically manifested, the neurons have already lost, which makes it very difficult to be able to study the underlying mechanisms of PD so as to develop a treatment of it. In such a situation, iPSCs can be used and experiments have also been carried out in this aspect. Nguyen et al. studied G2019S mutation in LRRK2 (Leucine Rich Repeat Kinase2) gene. This mutation has been reported in cases of sporadic and familial PD. Fibroblasts from a 60-year old female homologous for G2019S mutation were used as a source for the generation of iPSCs. Retrovirus was used for the transduction of Oct4, Sox2, and Klf4 into the fibroblasts, which after 2 months of transfection developed 3 colonies of human ESC, which were analyzed and found out to be similar to hESCs and wild type iPSCs. For differentiation of G2019S iPSCs to dopaminergic neurons, a combination of mid-brain selective patterning factors, sonic hedgehog (SHH) (induces the differentiation of dopaminergic neurons in substantia nigra), and Fibroblast growth factor 8 beta (FGF8b) [induces the development of cerebellum by the activation of Ras-extracellular signal-regulated kinase (ERK) pathway] and small molecules was used. The neurons generated by this method were functionally active and were found to be able to form active neural networks. The findings suggested LRRK2 to be having an important role in survival of neurons and disruption of which can cause PD. (Hurtado-Lorenzo et al., 2004; Sato et al., 2004; Nguyen et al., 2011). Similarly, a different group has also worked for the generation of iPSCs in PD. Devine et al. developed iPSCs from fibroblasts taken from a PD affected person possessing triplication of Synuclein gene by the transduction of four basic transcription factors. These iPSCs were then directed to differentiate into dopaminergic neurons *in vitro* for the study of PD (Devine et al., 2011).

These findings from modeling different diseases (mutations which are causing them, the pathological phenotypes caused by defects in various networks, genes playing an important role) help out in knowing the molecular mechanisms underlying the disease better, which ultimately carries the work forward to knowing the disease better for the development of a treatment. This

is evident from burgeoning reports on use of iPSC for the the purpose of disease modeling (Table 4). However, the technique suffers from various inherited risks and limitations as discussed ahead.

## REGENERATIVE MEDICINE

In regenerative medicine the injured or degenerated tissues are repaired by the generation of those tissues with the help of iPSCs in labs and then transplanting them to the site of injury or degeneration. Important issues associated with gene therapy are availability of tissue or organ and immunorejection. It is quite often that patients die because of the non-availability of donors which is a result of the fact that the population is non-aware of the scarcity of donors and the ever increasing need of organs due to accidents and degenerative diseases. Also, a patient can only be transplanted with the cells, tissues, or organs from the person who does not have any disease and whose physiological profile matches with the patient. Keeping these risks in mind, various tests are conducted before transplanting tissues or organs into the patient's body. The use of iPSCs offers a good approach for these treatments as the cells that will be transplanted to patient's body will be differentiated from the repaired iPSCs generated from the somatic cells from patient's own body. iPSCs have been used in treating a number of injuries and degenerative diseases. A comprehensive detail of all those would be beyond the scope of this article, however, major arguments are discussed below. Different injuries as a result of human activities, accidents or natural calamities can also be treated by the gene therapy utilizing iPSCs. The various conditions that can be treated are Hematopoietic disorders, Musculoskeletal injury, Spinal cord injury, liver damage by the generation of specific cells with the help of iPSCs (Liu et al., 2011b; Nori et al., 2011; Tan et al., 2012; Suzuki et al., 2013).

Other than accidental injuries, diseases can also be treated with the help of iPSCs. Kazuki et al. corrected the genetic deficiency in iPSCs from a human Duchenne Muscular Dystrophy (DMD) patient. They used Human Artificial Chromosome (HAC) for the expression of complete sequence of Dystrophin (DYS). They used fibroblasts from the DMD patient for the generation of iPSCs. HAC was used for the correction in the deletion or mutation in the Dystrophin gene present in iPSCs by transfer of DYS-HAC (complete genomic sequence of dystrophin in HAC) using Microcell-mediated chromosome transfer (MMCT) (Kazuki et al., 2009). MMCT is a technique in which micro cells containing few chromosomes are fused with whole cells (Doherty and Fisher, 2003).

iPSCs can also be used in cases of hepatocytes where loss of function of hepatocytes in culture and limited organ availability act as obstacles when fetal or adult progenitors are used for the development of hepatocytes. This lead to making use of iPSCs for the generation of hepatocytes for various liver problems.

Recently, there are accumulating data on the use of iPSC for *ex-vivo* blood expansion of various blood components. They can be used for the generation of Red Blood Cells (RBCs) which could be utilized for the generation of blood that is required over the globe for the purpose of treatment of various damages or diseases.

**Table 4 | List of diseases where iPSCs have been used for gene therapy and disease modeling.**

<b>Disease/syndrome</b>	<b>Cause(s)</b>	<b>Features</b>	<b>Cells used for iPSC generation</b>	<b>System used</b>	<b>References</b>
Parkinson's Disease (PD)	Familial forms caused by $\alpha$ -synuclein, ubiquitin carboxy terminal hydroxylase L1, parkin, DJ-1, putative serine threonine kinase 1 and leucine rich repeat kinase 2	Loss in nigrostriated dopaminergic neurons in substantia nigra; presence of Lewy bodies	Dermal fibroblasts of patient with idiopathic PD	Lentiviral	Soldner et al., 2009
Huntington disease (HD)	CAG repeats (36 or more) in the first exon of <i>htt</i> gene gets expanded abnormally	Degeneration in striatum and cerebral cortex	Fibroblasts	Lentiviral	Park et al., 2008b; Kaye and Finkbeiner, 2013
ALS or Lou Gehrig's disease	Autosomal dominant mutation in superoxide demutase (SOD1)	Death of motor neurons of the motor cortex, brain stem and spinal cord	Fibroblasts	Lentiviral	Rosen et al., 1993; Chestkov et al., 2014
Friedreich's ataxia (FRDA)	GAA trinucleotide repeat in the first exon of the frataxin gene gets expanded	Accumulation of mitochondrial iron, specific enzymes in mitochondria become defective, sensitivity to oxidative stress increases, cell death mediated by free radicals	Fibroblasts	Lentiviral	Campuzano et al., 1996; Ku et al., 2010
Lesch-Niyan syndrome (carrier state)	Deficiency of hypoxanthine guanine phospho ribosyl transferase (HPRT)	Over-production of uric acid, low or medium level of mental retardation, megaloblastic anemia is frequent	Dermal fibroblasts	Lentiviral	Park et al., 2008b
Shwachman-Bodian-Diamond syndrome (SBDS)	Mutations in the Shwachman-Bodian-Diamond syndrome (SBDS) gene	Exocrine pancreatic insufficiency, predisposition to leukemia, hematopoietic dysfunction	Fibroblasts	Lentiviral	Tulpule et al., 2013
Gaucher's type III	Deficiency of acid hydrolase, $\beta$ -glucocerebrosidase, or glucosylceramidase	Myclonal epilepsy, nerve deafness	Fibroblasts	Lentiviral	Park et al., 2008b
Becker type muscular dystrophy (BMD)	Mutation in dystrophin gene	Loss of walking ability, but progression slower than DMD	Fibroblasts	Lentiviral	Park et al., 2008b
Downs syndrome/trisomy 21	Trisomy of chromosome 21	Cardiac and cognitive defects, premature Alzheimers disease and aging, dysmorphic facial features	Fibroblasts	Lentiviral	Park et al., 2008b; Briggs et al., 2013

*(Continued)*



Table 4 | Continued

Disease/syndrome	Cause(s)	Features	Cells used for iPSC generation	System used	References
Familial dysautonomia (FD) or Riley-Day syndrome	Autosomal recessive disorder caused by a single mutation in exon 20 in K-B kinase complex associated protein (IKBKAP) gene	Dysfunction of small fiber sensory neurons	Fibroblasts	Lentiviral	Lee and Studer, 2011
Childhood cerebral adreno leuko dystrophy (CCALD)	Mutation in <i>ABCD1</i> gene	Adrenal cortex, nervous system and testes get affected, leading to rapid cerebral demyelination and adrenocortical atrophy.	Skin fibroblasts	Retroviral	Wang et al., 2012
Rett's syndrome	Classic form caused by loss-of-function mutation in Methyl-CpG-binding protein 2 (MECP2) gene on the X-chromosome, variants caused by mutations in FOXP1 or CDKL1 on chromosome 14 and X-chromosome, respectively	Neurocognitive regression and autistic behavior	Fibroblasts	Retroviral	Amenduni et al., 2011; Fairra et al., 2012
Duchenne type muscular dystrophy (DMD)	Biochemical and genetic defects in Dystrophin-glycoprotein complex	Loss of walking ability	Tail tip fibroblasts (mouse)	Retroviral	Gangopadhyay et al., 1992; Filareto et al., 2013
Generation of human prostate and urinary tract cells	NA	NA	Human prostate and urinary tract cells	Lentiviral	Moad et al., 2013
Adenosine deaminase deficiency-related severe combined immunodeficiency (ADA-SCID)	Defects in Adenosine deaminase (AD) gene	Impaired development and functioning of T, B, and NK cells; complete absence of humoral and cellular immunity; recurrence of infections.	Bone Marrow derived mesenchymal cells	Lentiviral	Park et al., 2008b; Sauer et al., 2012
Type 1 diabetes mellitus (DM)	Progressive $\beta$ -cell destruction	Long term micro and macro-vascular complications.	Fibroblasts	Lentiviral	Park et al., 2008b; Soejitno and Prayudi, 2011
Hemophilia A	Deficiency of factor VIII	Decreased protein production, inefficient clotting of blood	Fibroblasts	Retroviral	Xu et al., 2009
Glycogen storage disease 1a	Mutation in Glucose-6-Phosphate gene	Increased accumulation of lipids and glycogen	Dermal fibroblasts	Retroviral	Lei et al., 1995; Rashid et al., 2010
Familial hypercholesterolaemia	Mutation in low density lipoprotein receptor (LDLR) gene	Deficiency of LDL-receptor mediated uptake of cholesterol	Dermal fibroblasts	Retroviral	Rashid et al., 2010

(Continued)

Table 4 | Continued

Disease/syndrome	Cause(s)	Features	Cells used for iPSC generation	System used	References
Spinal muscular atrophy	Mutation in survival of motor neuron 1 (SMN1) gene	Paralysis, muscle weakness and often death	Fibroblasts	Lentiviral	Ebert et al., 2009
Hutchinson-Gilford progeria syndrome	Point mutations in lamin A	Premature atherosclerosis, vascular smooth muscles gets degraded	Fibroblasts	Retroviral	Liu et al., 2011a
Alzheimer disease	Duplication of amyloid $\beta$ precursor protein (APP)	Presence of neurofibrillary tangles and amyloid plaques in the brain	Fibroblasts	Retroviral	Israel et al., 2012
LEOPARD syndrome	Mutation in protein tyrosine phosphatase non-receptor type 11 (PTPN11) gene	Cardiac abnormalities, ocular hypertelorism, and growth retardation.	Fibroblasts	Retroviral	Legius et al., 2002; Carvajal-Vergara et al., 2010.
Timothy's syndrome	CACNA1C	Webbed fingers and toes, autism, immune deficiency	Fibroblasts	Retroviral	Yazawa et al., 2011
Dyskeratosis congenita	Mutation in dyskerin (DKC1) gene	Increased failure of bone marrow, pulmonary fibrosis and cancer, oral leukoplakia, abnormal skin pigmentation and nail dystrophy	Fibroblasts	Retroviral	Batista et al., 2011
$\alpha$ 1-antitrypsin deficiency	Mutation in $\alpha$ 1-antitrypsin (A1AT) gene	misfolded $\alpha$ 1-antitrypsin gets aggregated in the endoplasmic reticulum	Dermal fibroblasts	Retroviral	Rashid et al., 2010

There are various techniques by which we can use ESCs/iPSCs for the production of RBCs (Lim et al., 2013).

iPSCs can also be used for the generation of various cells which can help in the repairment of many tissues, for example, cardiovascular cells for the repairment of heart valves, vessels and ischemic tissues, but are limitations like safe delivery, post treatment adverse effects and standardization of protocols to generate large amounts of pure good quality cells. These obstacles once overcome, offer great opportunities for the applications of iPSCs for generating cardiovascular cells and studying corresponding diseases (Laflamme et al., 2007; Cao et al., 2008; Levenberg et al., 2010).

Various degenerative diseases in which cells death causes many symptoms have been treated by gene therapy using iPSCs. One such case is Retinitis pigmentosa (RP) where eye's retina degeneration causes impaired vision. For the treatment of RP, iPSCs were generated from the patient suffering with the disease which were then showed to differentiate into rod photoreceptor cells (Yoshida et al., 2014). The differentiation of iPSCs to Retinal pigmented epithelium is proved to be beneficial for patients of Retinal Pigmentosa and Age-related Macular Degeneration (AMD) (Li et al., 2012).

Gene therapy using iPSCs has also been used to treat various primary immunodeficiencies like *Chronic Granulomatous disorder (CGD)*, an autosomal recessive or X-linked disorder which affects the function of neutrophils, and *Wiskott–Aldrich syndrome (WAS)*, X-linked deficiency caused by mutation in WAS gene encoding WAS protein (WASp) which is an actin cytoskeleton regulator in hematopoietic lineage (Klein et al., 2003; Jiang et al., 2012).

The technology of genome editing or genome engineering, which includes the use of different genome editing technologies like Zinc Finger Nucleases (ZFNs), Transcription Activators like effector nucleases (TALENs), CRISPR/Cas systems, Meganucleases, Adeno-associated viruses, and adenoviruses, offers an opportunity for the efficient introduction of various insertions or deletions that range from single nucleotides to insertion/deletion of whole genes which has a capability of taking disease modeling to new heights (Suzuki et al., 2008; Grizot et al., 2009; Hockemeyer et al., 2009, 2011; Khan et al., 2010). Choi et al. reported the gene correction in alpha 1 anti trypsin (AAT) deficiency by the use of TALENs. A pair of TALEN expression vectors was constructed. This construct recognized the sequences flanking the Z mutation of the AAT gene. After co-nucleofection of targeting vector and TALEN expression vector was carried out, PCR and Southern blot was done. The results showed a highly efficient and simultaneous targeting of both alleles (Choi et al., 2013).

Once the specific cells are formed they can be transplanted to the specific site, in case of degenerative diseases, for the cure of the disease. And, in case where diseased cells which possess some mutation, the mutation is first corrected to form normal iPSCs and then these iPSCs are differentiated into specific cell types by providing the specific conditions required for the development of those cells. These repaired cells can then be transplanted into the body of the organism from which the cells for the generation of iPSCs were isolated.

## DRUG DISCOVERY AND CYTOTOXICITY STUDIES

Another important role offered by the use of iPSCs based methodology is their complementarity to drug discovery or prediction of toxicity via animal models. Animals or *in-vitro* animal derived cells are used as testing systems but are limited by their inability to replicate the “exact” human physiological conditions and related phenotypic attributions. Sometimes, the benefits demonstrated in the animal models do not come out to be beneficial in humans, for example, the SOD (superoxidase dimutase) gene associated with ALS (Amyotrophic Lateral Sclerosis) allowed the identification of Vitamin E and Creatine to be relievers of the diseased phenotype which failed to cause any improvements in humans (Desnuelle et al., 2001; Groeneveld et al., 2003; Shefner et al., 2004). And also, animal models are not good testing models for drug toxicity as a chemical may be toxic to an animal but may not be toxic to a different animal. For carcinogenic agents as well, different agents pose different levels of carcinogenicity in different animals, for example, formaldehyde is more carcinogenic to rats as compared to mice (Kerns et al., 1983). Finally, a newly discovered drug or therapy must be tested on human cells or human test models itself. These reasons make it more important to be able to use the systems closer to humans. Moreover, these studies need to be done in a system where the results could be directly extrapolated to humans. These studies include steps such as prediction/identification of a potential drug molecule followed by its synthesis, generation of iPSCs, their differentiation to specific somatic cells, and testing for toxic or non-toxic effects of the synthesized drug on the somatic cells. For toxicity studies, iPSCs from normal and diseased cells are used to generate neurons, hepatocytes, cardiomyocytes etc. Toxicity and potential side-effects are often most common cause to rule out most of the therapeutic molecules.

There is a long pipeline between the time when a hit is identified and the time when it reaches the market. Before using drugs on humans, their toxic effects must be properly evaluated for a safe administration of those drugs which is very costly. Only 10% of the drugs that enter clinical trials are able to reach market approval stage. The cost of developing a drug is increasing with the estimated cost of whole process being US \$1.2–1.7 billion per drug compound (Kaitin, 2008; Sollano et al., 2008; Gunaseeli et al., 2010). The development of 30% of the medicines was abandoned because of lack of efficacy and 30% due to concerns associated with safety (cardiotoxicity, hepatotoxicity) (Laustriat et al., 2010). The blocking of human ether-a-go-go related gene 1 (*hERG1*) channel by drug is associated with longer duration of ventricular repolarization which causes long QT syndrome. The response of iPSC-derived cardiomyocytes have been reported in response of cardiac and non-cardiac drugs in terms of electrophysiological capacity (Tanaka et al., 2009; Yokoo et al., 2009; Asai et al., 2010; Yoshida and Yamanaka, 2010). The generation of functional hepatocytes using iPSCs has also been reported (Sullivan et al., 2010). Due to lack in early detection of drug toxicity in human tissues, the process becomes more costly and extensively time consuming. Development of toxicity models that predict more accurately before clinical trials may help to reduce costs by demonstrating cardiotoxicity or hepatotoxicity caused by the drugs much before they reach clinical trials; reducing the time

taken for clinical trials of the drugs which will fail due to cytotoxicity in the later stages of trials. iPSCs have been explored by many research groups in order to identify compounds which are toxic or pose side-effects. The use of iPSCs offer better alternative to conventional tests of toxicology and drug research and offer better chemical safety assessment as they provide a more similar environment to human physiological conditions than is provided by conventional testing systems which make use of animals. For example, iPSCs have been used to establish test systems for cytotoxicity–cardiotoxicity, hepatotoxicity, and embryotoxicity testing (Kimmel and Young, 1983; Seiler et al., 2004).

iPSCs have the potential of providing native cells for splicing and post translational modifications that does not come with the small molecule screening systems using purified protein or recombinant cell lines used for the over-expression of the protein of interest which has aided in the process of drug screening. The use of iPSCs in drug screening has also been reported. Stem Cells enable the identification of molecules therapeutically useful and able to modulate the behavior of tumorigenic and normal stem cells. But as the use of ESC is limited because of the concerned ethical issues, iPSCs (normal and tumorigenic) can be used as an alternative.

McNeish et al. used neurons that were expressing  $\alpha$ -amino-3-hydroxy-5-methyl-4-isoxazolepropionate (AMPA) subtype glutamate receptors using mouse iPSCs and used them for the identification of small molecule AMPA potentiators (McNeish et al., 2010). Choi et al. used hepatic cells derived from iPSCs generated from patients with  $\alpha$ -1 anti-trypsin deficiency for the screening of 3131 compounds of Johns Hopkins Drug Library. After immunofluorescence, total AAT fluorescence intensity was measured for each well. Out of 262 compounds which inhibited the accumulation of AAT by more than 50%, 43 compounds after literature survey were found to be FDA approved, clinically used internationally, and exerting no major side effect. These compounds were further tested by using four different lines of AAT- deficiency iPSCs and final 5 hits, which gave consistent results in all the four iPSC lines were selected (Choi et al., 2013). iPSCs also help in studying ADME (Absorption, Distribution, Metabolism, Excretion) properties of drugs which has highly speeded up drug discovery and development (Bahadduri et al., 2010).

## ADVANTAGES OF iPSC TECHNOLOGY

iPSCs offer various advantages as compared with gene therapy by the use of nuclear transfer or Embryonic Cell mediated gene therapy (Kazuki et al., 2009).

### THE ETHICAL ISSUES ARE ELIMATED BY THE USE OF iPSCs

The use of ESCs in research is laden with ethical issues regarding personhood, justice toward humankind and human dignity that are associated with the use of human life in its earliest form, the embryo. Additional concerns that surround the use of ESCs are informed consent, improper incentives, and health and safety concerns of the women donating eggs for the generation of embryos by *in-vitro* fertilization. iPSCs have solved the controversy over the destruction of embryos associated with the use of ESCs in research.

### REDUCED CHANCES OF IMMUNOREJECTION

iPSCs are generated from the somatic cells of one's own body and hence there is no risk of immunorejection of these autologous cells. Guha et al. differentiated mouse iPSCs into embryoid bodies and different tissue specific cells. After the transplantation of these iPSC derived EBs or tissue specific cells, no evidence of increased Tcell proliferation or an antigen-specific secondary immune response was found (Guha et al., 2013).

### THROUGHPUT SCREENING FOR PREDICTING TOXICITY/THERAPEUTIC RESPONSES OF NEWLY DEVELOPED DRUGS

The concept of using iPSCs to predict toxicology and therapeutic responses of drugs is based on the property of iPSCs to continuously self renew which make it possible to generate libraries and their ability to give rise to all types of body cells make them suitable to be used for prediction of toxicity and possible side effects of newly developed drugs in different body cells (Wobus and Loser, 2011).

### LOWERING THE OVERALL COST AND RISK OF CLINICAL TRIALS

For every new drug to reach market, around 5000–10,000 compounds need to be tested during preclinical trials. Therefore, any strategy which standardizes the prediction of toxicity would impact the cost. Many drugs fail after Phase III, for example BMS-094 (hepatitis C drug) failed after death of a patient. The cost used for the clinical trials could be reduced by using iPSCs to provide the toxicity details of the drug by different cytotoxicity assays. Much of the cost for preclinical testing is due to the requirement of animal models for estimation of bioavailability of new drug. As animal models do not mimic the microenvironment of the human cells fully, the use of iPSCs for these tests may cut the cost associated with providing animal models which will ultimately decrease the overall costs of the clinical trials.

### DEVELOPMENT OF A PERSONALIZED APPROACH FOR ADMINISTRATION OF DRUGS

As, iPSCs are derived from individual patients, these offer scientists an opportunity for modeling diseases on a patient-by-patient basis. This enables screening the genomic differences between individuals that may help in the progression of disease, and the screening of pharmacological agents to find the ideal one for each individual (Chun et al., 2011).

### GENE TARGETING AND CORRECTION TECHNOLOGIES (GENE THERAPY)

Reprogramming of somatic cells from any genetic background to iPSCs has allowed the generation of cell lines possessing disease-causing mutations. The ability of modifying the specific sites in a genome for altering the genes of interest becomes highly important here. To realize the full potential of iPSCs, methods for efficient genetic modifications are required.

### FOR DISEASE MODELING, THE PHENOTYPES NEED TO BE CONSISTENT EVERY TIME, WHICH IS A POSSIBILITY IN CASE OF iPSCs

Many research groups have modeled various diseases using iPSCs and the cell lines developed were found to be consistent phenotypically. Fong et al. developed Tauopathy derived iPSCs carrying a TAU-A152T mutation. The phenotypes observed in the cells

from iPSCs were consistent with those in patients with the mutation (Fong et al., 2013).

### LIMITATIONS AND/OR RISKS ASSOCIATED WITH THE USE OF iPSCs IN CLINICS

There are some limitations/disadvantages associated with iPSCs as well. Generation of iPSCs make use of retroviral or lentiviral systems, so, it needs to be concerned if the viral systems get incorporated with the host genome. The genetic material inserted via retroviral vectors may randomly integrate into the genome of the host which can cause genetic aberration and teratoma formation (Howe et al., 2008). The transcription of the transgenes inserted via vector systems may resume in the cells that have been formed by the differentiation of iPSCs (Okita et al., 2007). The assessment also becomes complex as it depends on number of variables, like small molecules for the enhancement of iPSCs production are used or not, whether the factors used for reprogramming are contained in single vectors or multiple vectors, and which source has been used for the generation of iPSCs, contribute to the differences in the epigenome, genotype, and phenotype of the iPSCs produced which make it difficult to determine whether the problems occurred due to the technology or the reprogramming method(s) (Howe et al., 2008; Li et al., 2011). It is possible to use iPSCs for modeling of the diseases which have a phenotype and are monogenic but in case of complex diseases the role of genetic and epigenetic factors is uncertain which makes modeling of disease a tough job. It is not possible for iPSCs to model every disease successfully, hence, it should be noted if the iPSCs derivatives are getting properly matured to the cells of interest or not in order to know if they are suitable to be used for the purpose of our interest or not. The altered expressions of the basal reprogramming factors has also been reported to cause diseases. The overexpression

of Oct4 may lead to epithelial cell dysplasia (Hochedlinger et al., 2005). The aberrant expression of Sox2 has been reported to cause mucinous colon carcinoma (Park et al., 2008c). Klf4 has role in the formation of breast tumors (Ghaleb et al., 2005). c-Myc plays an important role in the formation of around 70% of human cancers (Kuttler and Mai, 2006). For this reason, retroviral introduction of c-Myc is also advised to be avoided for use in clinical applications (Okita et al., 2007). Zhang et al. reported that out of 593 genes that express in iPSCs, 209 genes were found to express in cancer tissues and tumor cells. Five oncogenes were found to overexpress in iPSCs whereas the oncogene RAB25 was found to express in cells derived from iPSCs (Zhang et al., 2012). RAB25 (member of RAS protein family) plays an important role in survival of cancer cells (Cheng et al., 2013). The different pros and cons of the use of iPSCs in different applications has been mentioned in **Table 5**.

### QUALITY CONTROL TESTING OF iPSCs

There are many things which need to be considered before using iPSCs clinically for regenerative medicine. The manufacture of clinical grade iPSCs demand quality control at different levels of the manufacturing process. Firstly, it is important to decide whether the therapy would be autologous or allogeneic. Autologous therapy should be such that it is able to manage the differences in the patient in terms of age, health and gender which could affect the quality, consistency and safety of the final product. It requires long term study of the increased risk of tumor formation as the patient would not be expected to have any immune response. The alternative, allogeneic therapy offer well-characterized cell banks for therapeutics to be established. Donors need to meet strict eligibility requirements and the donor must be aware of the use and testing of his sample and that the

**Table 5 | The pros and cons associated with the use of iPSCs.**

	Pros	Cons
Due to characteristics of iPSCs	<ul style="list-style-type: none"> <li>Eliminates ethical issues</li> <li>Reduced chances of immunorejection (Guha et al., 2013)</li> <li>Reduced risks of clinical trials</li> <li>Consistent phenotypes for disease modeling (Fong et al., 2013)</li> <li>Differentiation to any cell type</li> </ul>	<ul style="list-style-type: none"> <li>Premature aging</li> <li>High rate of apoptosis</li> <li>Low level DNA damage repair (Zhang et al., 2012)</li> <li>Sensitive to ionizing radiation (Zhang et al., 2013)</li> <li>Low rate of reprogramming</li> </ul>
Due to technology of development	<ul style="list-style-type: none"> <li>Continuous cell supply</li> <li>Possible preservation</li> <li>Availability and accessibility of source cells</li> <li>Personalization of treatment (Chun et al., 2011)</li> </ul>	<ul style="list-style-type: none"> <li>Insertional mutagenesis (Okita et al., 2007; Howe et al., 2008)</li> <li>Tumorigenesis (Okita et al., 2007).</li> <li>Chances of development of diseases due to factors used (Ghaleb et al., 2005; Hochedlinger et al., 2005; Kuttler and Mai, 2006; Park et al., 2008c)</li> <li>Suboptimal standardization (Pappas and Yang, 2008)</li> </ul>
Applications	<ul style="list-style-type: none"> <li>High-throughput screening of drugs and toxicity prediction (Wobus and Loser, 2011; Choi et al., 2013)</li> <li>Reduced cost</li> <li>Gene correction therapies add to the benefits from iPSCs (Choi et al., 2013)</li> </ul>	<ul style="list-style-type: none"> <li>Complex assessment</li> <li>Complex diseases become difficult to be modeled</li> <li>Immature cells cause problems during cell line development</li> </ul>

collection of sample would be carried out in an ethical way. After the collection and culture of the source cell, a suitable reprogramming method is to be decided. The use of retroviral vectors has risks of insertional mutagenesis and hence their use is not ideal for clinical applications. Non-viral methods address this question and the method is chosen according to pros and cons associated. Once the iPSCs have generated, proper characterization is vitally required. For the verification that the iPSCs generated are really pluripotent, the expression of different pluripotency markers is assessed. It must be checked if the iPSCs generated can differentiate to all the three germ layers. To further check the ability of the iPSCs to differentiate, the efficiency of generation of the cells which are required for the therapy is determined. The cells generated must be tested to be functional, so the physiological properties of cells generated from iPSCs were compared with that of the cells generated from ESCs. The final product has variability which depends on the quality of starting material used as cell source, difference in other raw materials used for cell culture, and the protocol followed. Identifying and controlling these is important to standardize any manufacturing process to demonstrate reproducibility and consistent production meeting the specifications. Research based methods that have manual nature may not prove to be ideal for the large production of cells. Quality control testing for final product and preparation procedures must also be designed. For administration of fresh cells, there is need of a rapid method for detection of contamination. Plans must be there in case if the sample fails the sterility test, if the patient has already been administered with the product. Once the quality testing has been done, it should be ensured that the final cell therapeutic is meeting all the required specifications. For allogeneic therapies, a cell bank must be established which would contain the starting cell material and it should be tested to check the consistency of that material. Establishment of a large cell bank is not important for autologous therapeutics; a small bank would serve the purpose of identification and minimization of variability that may result from initial reprogramming. The colonies which meet the specifications of karyotype, marker expression, mycoplasma/bacterial/fungal contaminate and growth characteristics, are expanded to build a bank. Additional knowledge about the post release handling of the cell product is also required. It is important to ensure that the final cell product is representative of therapeutic that will be subjected to human clinical trials. Preclinical animal studies should be able to address the safety of the cell product which includes the affects of the contaminants present in the cell population from donor, chances of teratoma formation and generation of karyotypically unstable cells. It should be ensured that the changes in process associated with change from animal studies to production for clinical use would not cause any significant problems.

## FUTURE PERSPECTIVES

Since the emergence of the field of iPSCs, it has highly developed and successfully expanded to different fields of regenerative medicine. Their application in clinical research will surely benefit the patients in future. At present there are few, but important applications of iPSCs but, if this field keeps on growing at the present pace, it wouldn't take long to expand the applications of

iPSCs to more biological fields to aid research and treatments. iPSCs are important in disease modeling as they do not have ethical issues concerned as in case of ESCs and provide with the physiological conditions more close to humans which is not an advantage with the animal disease models. iPSCs also have a possibility of giving consistent phenotypes every time, which is an important issue for disease modeling. More and more types of diseased cells are being tried to be modeled, but, it still has many limitations that are encountered while working with iPSCs, which need to be overcome. Also, it is not possible to be able to model every disease, so, further exploration of modeling diseases with iPSCs is required. As iPSCs eliminate the chances of immunorejection, they hold great importance in Gene therapy. But the generation of iPSCs itself has many issues associated it like incorporation of vectors into host genomes, and the dependence on the various factors like usage of small molecules, single or multiple vectors, source of cells, which make the generation of iPSCs a risky task and hence, more about iPSCs need to be explored to make it easier to generate them and to be able to apply them to various other important and attractive areas of medical sciences for their proper utilization to achieve the advantages that use of iPSCs can have. And, different advances in the field, including the solution of many limitations mentioned above would prove to be beneficial for increasing therapeutic potential. The present situation of the applications of iPSCs deals with the laboratory scale production and testing assay. A lot has to be done to realize the applications of iPSCs at a higher level, for the use in hospitals, to be beneficial for the patients.

## CONCLUSION

The iPSC therapy is in infancy but a constant progress in reprogramming technologies has occurred; new and improved methods are gathering. As iPSCs can differentiate to different cell types, we can generate the required cells for the study or treatment of numerous diseases and determination of drug toxicity. The therapy using HSCs is being used since a long time. The change from allogeneic to autologous iPSCs has been a major breakthrough. Autologous therapy also offers the advantage of personalized medicine.

## ACKNOWLEDGMENTS

We thank the Honourable Chairman and the Honourable Vice-Chancellor of Delhi Technological University, Shahbad Daultapur, Bawana Road, Delhi-42, for the support. Dr. Vimal K. Singh particularly thanks the Department of Science and Technology (DST) and Indian National Science Academy (INSA), India, for the research grant.

## REFERENCES

- Aasen, T., Raya, A., Barrero, M. J., Garreta, E., Consiglio, A., Gonzalez, F., et al. (2008). Efficient and rapid generation of induced pluripotent stem cells from human keratinocytes. *Nat. Biotechnol.* 26, 1276–1284. doi: 10.1038/nbt.1503
- Adewumi, O., Aflatoonian, B., Ahrlund-Richter, L., Amit, M., Andrews, P. W., Beighton, G., et al. (2007). Characterization of human embryonic stem cell lines by the International Stem Cell Initiative. *Nat. Biotechnol.* 25, 803–816. doi: 10.1038/nbt1318
- Amenduni, M., De Filippis, R., Cheung, A. Y. L., Disciglio, V., Epistolato, M. C., Ariani, F., et al. (2011). iPS cells to model CDKL5-related disorders. *Eur. J. Hum. Genet.* 19, 1246–1255. doi: 10.1038/ejhg.2011

- Asai, Y., Tada, M., Otsuji, T. G., and Nakatsuji, N. (2010). Combination of functional cardiomyocytes derived from human stem cells and a highly-efficient microelectrode array system: an ideal hybrid model assay for drug development. *Curr. Stem Cell Res. Ther.* 5, 227–232. doi: 10.2174/157488810791824502
- Bahadduri, P. M., Polli, J. E., Swaan, P. W., and Ekins, S. (2010). Targeting drug transporters - combining *in silico* and *in vitro* approaches to predict *in vivo*. *Methods Mol. Biol.* 637, 65–103. doi: 10.1007/978-1-60761-700-6\_4
- Batista, L. F., Pech, M. F., Zhong, M. F., Nguyen, H. N., Xie, K. T., Zaug, A. J., et al. (2011). Telomere shortening and loss of self-renewal in dyskeratosis congenita induced pluripotent stem cells. *Nature* 474, 399–402. doi: 10.1038/nature10084
- Brambrink, T., Foreman, R., Welstead, G. G., Lengner, C. J., Wernig, M., Suh, H., et al. (2008). Sequential expression of pluripotency markers during direct reprogramming of mouse somatic cells. *Cell Stem Cell* 2, 151–159. doi: 10.1016/j.stem.2008.01.004
- Briggs, J. A., Mason, E. A., Ovchinnikov, D. A., Wells, C. A., and Wolvetang, E. J. (2013). Concise review: new paradigms for down syndrome research using induced pluripotent stem cells: tackling complex human genetic disease. *Stem Cells Transl. Med.* 2, 175–184. doi: 10.5966/sctm.2012-0117
- Campuzano, V., Montermini, L., Molto, M. D., Pianese, L., Cossee, M., Cavalcanti, F., et al. (1996). Friedreich's ataxia: autosomal recessive disease caused by an intronic GAA triplet repeat expansion. *Science* 271, 1423–1427. doi: 10.1126/science.271.5254.1423
- Cao, F., Wagner, R. A., Wilson, K. D., Xie, X., Fu, J. D., Drukker, M., et al. (2008). Transcriptional and functional profiling of human embryonic stem cell-derived cardiomyocytes. *PLoS ONE* 3:e3474. doi: 10.1371/journal.pone.0003474
- Carvajal-Vergara, X., Sevilla, A., D'Souza, S. L., Ang, Y. S., Schaniel, C., Lee, D. F., et al. (2010). Patient-specific induced pluripotent stem-cell derived models of LEOPARD syndrome. *Nature* 465, 808–812. doi: 10.1038/nature09005
- Cheng, K. W., Agarwal, R., Mitra, S., and Mills, G. B. (2013). Rab25 small GTPase mediates secretion of tumor necrosis factor receptor superfamily member 11b (osteoprotegerin) protecting cancer cells from effects of TRAIL. *J. Genet. Syndr. Gene Ther.* 4:153. doi: 10.4172/2157-7412.1000153
- Chestkov, I. V., Vasilieva, E. A., Illarioshkin, S. N., Lagarkova, M. A., and Kiselev, S. L. (2014). Patient-specific induced pluripotent stem cells for SOD1-associated amyotrophic lateral sclerosis pathogenesis studies. *Acta Naturae* 6, 54–60.
- Choi, M. S., Kim, Y., Shim, J. S., Park, J. T., Wang, R., Leach, S. D., et al. (2013). Efficient drug screening and gene correction for treating liver disease using patient-specific stem cells. *Hepatology* 57, 2458–2468. doi: 10.1002/hep.26237
- Chun, Y. S., Byun, K., and Lee, B. (2011). Induced pluripotent stem cells and personalized medicine: current progress and future perspectives. *Anat. Cell Biol.* 44, 245–255. doi: 10.5115/acb.2011.44.4.245
- Desnuelle, C., Dib, M., Garrel, C., and Favier, A. (2001). A double-blind, placebo-controlled randomized clinical trial of alpha-tocopherol (vitamin E) in the treatment of amyotrophic lateral sclerosis. ALS riluzole-tocopherol Study Group. *Amyotroph. Lateral Scler. Other Motor Neuron Disord.* 2, 9–18. doi: 10.1080/146608201300079364
- Devine, M. J., Ryten, M., Vodicka, P., Thomson, A. J., Burdon, T., Houlden, H., et al. (2011). Parkinson's disease induced pluripotent stem cells with triplication of the  $\alpha$ -synuclein locus. *Nat. Commun.* 2, 440. doi: 10.1038/ncomms1453
- Dimos, J. T., Rodolfa, K. T., Niakan, K. K., Weisenthal, L. M., Mitsumoto, H., Chung, W., et al. (2008). Induced pluripotent stem cells generated from patients with ALS can be differentiated into motor neurons. *Science* 321, 1218–1221. doi: 10.1126/science.1158799
- Doherty, A. M., and Fisher, E. M. (2003). Microcell-mediated chromosome transfer (MMCT): small cells with huge potential. *Mamm. Genome* 14, 583–592. doi: 10.1007/s00335-003-4002-0
- Ebert, A. D., Yu, J., Rose, F. F. Jr., Mattis, V. B., Lorson, C. L., Thomson, J. A., et al. (2009). Induced pluripotent stem cells from a spinal muscular atrophy patient. *Nature* 457, 277–280. doi: 10.1038/nature07677
- Evans, M. J., and Kaufman, M. H. (1981). Establishment in culture of pluripotential cells from mouse embryos. *Nature* 292, 154–156. doi: 10.1038/292154a0
- Farra, N., Zhang, W. B., Pasceri, P., Eubanks, J. H., Salter, M. W., and Ellis, J. (2012). Rett syndrome induced pluripotent stem cell-derived neurons reveal novel neurophysiological alterations. *Mol. Psychiatry* 17, 1261–1271. doi: 10.1038/mp.2011.180
- Feng, B., Jiang, J., Kraus, P., Ng, J. H., Heng, J. C., Chan, Y. S., et al. (2009). Reprogramming of fibroblasts into induced pluripotent stem cells with orphan nuclear receptor Errrb. *Nat. Cell Biol.* 11, 197–203. doi: 10.1038/ncb1827
- Filareto, A., Parker, S., Darabi, R., Borges, L., Iacovino, M., Schaaf, T., et al. (2013). An *ex vivo* gene therapy approach to treat muscular dystrophy using inducible pluripotent stem cells. *Nat. Commun.* 4, 1549. doi: 10.1038/ncomms2550
- Fong, H., Wang, C., Knoferle, J., Walker, D., Balestra, M. E., and Tong, L. M. (2013). Genetic correction of tauopathy phenotypes in neurons derived from human induced pluripotent stem cells. *Stem Cell Reports* 1, 226–234. doi: 10.1016/j.stemcr.2013.08.001
- Fong, Y. W., Inouye, C., Yamaguchi, T., Cattoglio, C., Grubisic, I., and Tjian, R. (2011). A DNA repair complex functions as an Oct4/Sox2 coactivator in embryonic stem cells. *Cell* 147, 120–131. doi: 10.1016/j.cell.2011.08.038
- Fusaki, N., Ban, H., Nishiyama, A., Saeki, K., and Hasegawa, M. (2009). Efficient induction of transgene-free human pluripotent stem cells using a vector based on Sendai virus, an RNA virus that does not integrate into the host genome. *Proc. Jpn. Acad. Ser. B Phys. Biol. Sci.* 85, 348–362. doi: 10.2183/pjab.85.348
- Gangopadhyay, S. B., Sherratt, T. G., Heckmatt, J. Z., Dubowitz, V., Miller, G., Shokeir, M., et al. (1992). Dystrophin in frameshift deletion patients with Becker muscular dystrophy. *Am. J. Hum. Genet.* 51, 562–570.
- Ghaleb, A. M., Nandan, M. O., Chanchevalap, S., Dalton, W. B., Hisamuddin, I. M., and Yang, V. W. (2005). Krüppel-like factors 4 and 5: the yin and yang regulators of cellular proliferation. *Cell Res.* 15, 92–96. doi: 10.1038/sj.cr.7290271
- Gonzalez, F., Barragan Monasterio, M., Tiscornia, G., Montserrat Pulido, N., Vassena, R., Batlle Morera, L., et al. (2009). Generation of mouse-induced pluripotent stem cells by transient expression of a single nonviral polycistronic vector. *Proc. Natl. Acad. Sci. U.S.A.* 106, 8918–8922. doi: 10.1073/pnas.0901471106
- Grizot, S., Smith, J., Daboussi, F., Prieto, J., Redondo, P., Merino, N., et al. (2009). Efficient targeting of a SCID gene by an engineered single-chain homing endonuclease. *Nucleic Acids Res.* 37, 5405–5419. doi: 10.1093/nar/gkp548
- Groeneveld, G. J., Veldink, J. H., van der Tweel, I., Kalmijn, S., Beijer, C., de Visser, M., et al. (2003). A randomized sequential trial of creatine in amyotrophic lateral sclerosis. *Ann. Neurol.* 53, 437–445. doi: 10.1002/ana.10554
- Guha, P., Morgan, J. W., Mostoslavsky, G., Rodrigues, N. P., and Boyd, A. S. (2013). Lack of immune response to differentiated cells derived from syngeneic induced pluripotent stem cells. *Cell Stem Cell* 12, 407–412. doi: 10.1016/j.stem.2013.01.006
- Gunaseeli, I., Doss, M. X., Antzelevitch, C., Hescheler, J., and Sachinidis, A. (2010). Induced pluripotent stem cells as a model for accelerated patient- and disease-specific drug discovery. *Curr. Med. Chem.* 17, 759–766. doi: 10.2174/092986710790514480
- Gurdon, J. B. (1962). The developmental capacity of nuclei taken from intestinal epithelium cells of feeding tadpoles. *J. Embryol. Exp. Morphol.* 10, 622–640.
- Haase, A., Olmer, R., Schwanke, K., Wunderlich, S., Merkert, S., Hess, C., et al. (2009). Generation of induced pluripotent stem cells from human cord blood. *Cell Stem Cell* 5, 434–441. doi: 10.1016/j.stem.2009.08.021
- Hanna, J., Markoulaki, S., Schorderet, P., Carey, B. W., Beard, C., Wernig, M., et al. (2008). Direct reprogramming of terminally differentiated mature B lymphocytes to pluripotency. *Cell* 133, 250–264. doi: 10.1016/j.cell.2008.03.028
- Hochedlinger, K., and Jaenisch, R. (2002). Nuclear transplantation: lessons from frogs and mice. *Curr. Opin. Cell Biol.* 14, 741–748. doi: 10.1016/S0955-0674(02)00380-0
- Hochedlinger, K., Yamada, Y., Beard, C., and Jaenisch, R. (2005). Ectopic expression of Oct-4 blocks progenitor-cell differentiation and causes dysplasia in epithelial tissues. *Cell* 121, 465–477. doi: 10.1016/j.cell.2005.02.018
- Hockemeyer, D., Soldner, F., Beard, C., Gao, Q., Mitalipova, M., DeKelver, R. C., et al. (2009). Efficient targeting of expressed and silent genes in human ESCs and iPSCs using zinc-finger nucleases. *Nat. Biotechnol.* 27, 851–857. doi: 10.1038/nbt.1562
- Hockemeyer, D., Wang, H., Kiani, S., Lai, C. S., Gao, Q., Cassidy, J. P., et al. (2011). Genetic engineering of human pluripotent cells using TALE nucleases. *Nat. Biotechnol.* 29, 731–734. doi: 10.1038/nbt.1927
- Howe, S. J., Mansour, M. R., Schwarzwaelder, K., Bartholomae, C., Hubank, M., Kempinski, H., et al. (2008). Insertional mutagenesis combined with acquired somatic mutations causes leukemogenesis following gene therapy of SCID-X1 patients. *J. Clin. Invest.* 118, 3143–3150. doi: 10.1172/JCI35798
- Huangfu, D., Maehr, R., Guo, W., Eijkelenboom, A., Snitow, M., Chen, A. E., et al. (2008a). Induction of pluripotent stem cells by defined factors is greatly improved by small-molecule compounds. *Nat. Biotechnol.* 26, 795–797. doi: 10.1038/nbt1418

- Huangfu, D., Osafune, K., Maehr, R., Guo, W., Eijkelenboom, A., Chen, S., et al. (2008b). Induction of pluripotent stem cells from primary human fibroblasts with only Oct4 and Sox2. *Nat. Biotechnol.* 26, 1269–1275. doi: 10.1038/nbt.1502
- Hurtado-Lorenzo, A., Millan, E., Gonzalez-Nicolini, V., Suwelack, D., Castro, M. G., and Lowenstein, P. R. (2004). Differentiation and transcription factor gene therapy in experimental Parkinson's disease: sonic hedgehog and Gli-1, but Not Nurr-1, protect nigrostriatal cell bodies from 6-OHDA-induced neurodegeneration. *Mol. Ther.* 10, 507–524. doi: 10.1016/j.ymthe.2004.05.021
- Israel, M. A., Yuan, S. H., Bardy, C., Reyna, S. M., Mu, Y., Herrera, C., et al. (2012). Probing sporadic and familial Alzheimer's disease using induced pluripotent stem cells. *Nature* 482, 216–220. doi: 10.1038/nature10821
- Jiang, Y., Cowley, S. A., Siler, U., Melguizo, D., Tilgner, K., Browne, C., et al. (2012). Derivation and functional analysis of patient-specific induced pluripotent stem cells as an *in vitro* model of chronic granulomatous disease. *Stem Cells* 30, 599–611. doi: 10.1002/stem.1053
- Kaitin, K. I. (2008). Obstacles and opportunities in new drug development. *Clin. Pharmacol. Ther.* 83, 210–212. doi: 10.1038/sj.cpt.6100462
- Kaye, J. A., and Finkbeiner, S. (2013). Modeling Huntington's disease with induced pluripotent stem cells. *Mol. Cell. Neurosci.* 56, 50–64. doi: 10.1016/j.mcn.2013.02.005
- Kazuki, Y., Hiratsuka, M., Takiguchi, M., Osaki, M., Kajitani, M., Hoshiya, H., et al. (2009). Complete genetic correction of iPSC cells from Duchenne muscular dystrophy. *Am. Soc. Gene Cell Ther.* 18, 386–393. doi: 10.1038/mt.2009.274
- Kerns, W. D., Pavkov, K. L., Donofrio, D. J., Gralla, E. J., and Swenberg, J. A. (1983). Carcinogenicity of formaldehyde in rats and mice after long-term inhalation exposure. *Cancer Res.* 43, 4382–4392.
- Khan, I. F., Hirata, R. K., Wang, P. R., Li, Y., Kho, J., Nelson, A., et al. (2010). Engineering of human pluripotent stem cells by AAV-mediated gene targeting. *Mol. Ther.* 18, 1192–1199. doi: 10.1038/mt.2010.55
- Kim, D., Kim, C. H., Moon, J. I., Chung, Y. G., Chang, M. Y., Han, B. S., et al. (2009b). Generation of human induced pluripotent stem cells by direct delivery of reprogramming proteins. *Cell Stem Cell* 4, 472–476. doi: 10.1016/j.stem.2009.05.005
- Kim, J. B., Greber, B., Arauzo-Bravo, M. J., Meyer, J., Park, K. I., Zaehres, H., et al. (2009a). Direct reprogramming of human neural stem cells by OCT4. *Nature* 461, 649–643. doi: 10.1038/nature08436
- Kimmel, C. A., and Young, J. F. (1983). Correlating pharmacokinetics and teratogenic endpoints. *Fundam. Appl. Toxicol.* 3, 250–255. doi: 10.1016/S0272-0590(83)80136-5
- Klein, C., Nguyen, D., Liu, C. H., Mizoguchi, A., Bhan, A. K., Miki, H., et al. (2003). Gene therapy for Wiskott-Aldrich syndrome: rescue of T-cell signaling and amelioration of colitis upon transplantation of retrovirally transduced hematopoietic stem cells in mice. *Blood* 101, 2159–2166. doi: 10.1182/blood-2002-05-1423
- Ku, S., Soragni, E., Campau, E., Thomas, E. A., Altun, G., Laurent, L. C., et al. (2010). Friedreich's ataxia induced pluripotent stem cells model intergenerational GAA•TTC triplet repeat instability. *Cell Stem Cell* 7, 631–637. doi: 10.1016/j.stem.2010.09.014
- Kunisato, A., Wakatsuki, M., Shinba, H., Ota, T., Ishida, I., Nagao, K., et al. (2011). Direct generation of induced pluripotent stem cells from human nonmobilized blood. *Stem Cells Dev.* 20, 159–168. doi: 10.1089/scd.2010.0063
- Kuttler, F., and Mai, S. (2006). c-Myc, genomic instability and disease. *Genome Dyn.* 1, 171–190. doi: 10.1159/000092507
- Laflamme, M. A., Chen, K. Y., Naumova, A. V., Muskheli, V., Fugate, J. A., Dupras, S. K., et al. (2007). Cardiomyocytes derived from human embryonic stem cells in pro-survival factors enhance function of infarcted rat hearts. *Nat. Biotechnol.* 25, 1015–1024. doi: 10.1038/nbt1327
- Lan, M. L., Acharya, M. M., Tran, K. K., Bahari-Kashani, J., Patel, N. H., Strnadel, J., et al. (2012). Characterizing the radioreponse of pluripotent and multipotent human stem cells. *PLoS ONE* 7:e50048. doi: 10.1371/journal.pone.0050048
- Laustriat, D., Gide, J., and Peschanski, M. (2010). Human pluripotent stem cells in drug discovery and predictive toxicology. *Biochem. Soc. Trans.* 38, 1051–1057. doi: 10.1042/BST0381051
- Lee, G., Papapetrou, E. P., Kim, H., Chambers, S. M., Tomishima, M. J., Fasano, C. A., et al. (2009). Modelling pathogenesis and treatment of familial dysautonomia using patient-specific iPSCs. *Nature* 461, 402–406. doi: 10.1038/nature08320
- Lee, G., and Studer, L. (2011). Modelling familial dysautonomia in human induced pluripotent stem cells. *Phil. Trans. R. Soc. B.* 366, 2286–2296. doi: 10.1098/rstb.2011.0026
- Legius, E., Schrander-Stumpel, C., Schollen, E., Pulles-Heintzberger, C., Gewillig, M., and Fryns, J. P. (2002). PTPN11 mutations in LEOPARD syndrome. *J. Med. Genet.* 39, 571–574. doi: 10.1136/jmg.39.8.571
- Lei, K., Chen, Y., Chen, H., Wong, L. C., Liu, J., McConkie-Rosell, A., et al. (1995). Genetic basis of glycogen storage disease type 1a: prevalent mutations at the glucose-6-phosphatase locus. *Am. J. Hum. Genet.* 57, 766–771.
- Levenberg, S., Ferreira, L. S., Chen-Konak, L., Kraehenbuehl, T. P., and Langer, R. (2010). Isolation, differentiation and characterization of vascular cells derived from human embryonic stem cells. *Nat. Protoc.* 5, 1115–1126. doi: 10.1038/nprot.2010.31
- Lim, W. E., Inoue-Yokoo, T., Tan, K. S., Lai I. M., and Sugiyama, D. (2013). Hematopoietic cell differentiation from embryonic and induced pluripotent stem cells. *Stem Cell Res. Ther.* 4:71. doi: 10.1186/scrt222
- Li, W., Wei, W., Zhu, S., Zhu, J., Shi, Y., Lin, T., et al. (2009). Generation of rat and human induced pluripotent stem cells by combining genetic reprogramming and chemical inhibitors. *Cell Stem Cell* 4, 16–19. doi: 10.1016/j.stem.2008.11.014
- Li, Y., Tsai, Y., Hsu, C., Erol, D., Yang, J., Wu, W., et al. (2012). Long-term safety and efficacy of human-induced pluripotent stem cell (iPS) grafts in a preclinical model of retinitis pigmentosa. *Mol. Med.* 18:1312–1319. doi: 10.2119/molmed.2012.00242
- Li, Y., Zhang, Q., Yin, X., Yang, W., Du, Y., Hou, P., et al. (2011). Generation of iPSCs from mouse fibroblasts with a single gene, Oct4, and small molecules. *Cell Res.* 21, 196–204. doi: 10.1038/cr.2010.142
- Liu, G. H., Barkho, B. Z., Ruiz, S., Diep, D., Qu, J., Yang, S. L., et al. (2011a). Recapitulation of premature ageing with iPSCs from Hutchinson-Gilford progeria syndrome. *Nature* 472, 221–225. doi: 10.1038/nature09879
- Liu, H., Kim, Y., Sharkis, S., Marchionni, L., and Jang, Y. (2011b). *In vivo* liver regeneration potential of human induced pluripotent stem cells from diverse origins. *Sci. Transl. Med.* 3, 82ra39. doi: 10.1126/scitranslmed.3002376
- Liu, H., Ye, Z., Kim, Y. H., Sharkis, S., and Jang, Y. Y. (2010). Generation of endoderm derived human ips cells from primary hepatocytes. *Hepatology* 51, 1810–1819. doi: 10.1002/hep.23626
- Maherali, N., Ahfeldt, T., Rigamonti, A., Utikal, J., Cowan, C., and Hochedlinger, K. (2008). A high-efficiency system for the generation and study of human induced pluripotent stem cells. *Cell Stem Cell* 3, 340–345. doi: 10.1016/j.stem.2008.08.003
- Mali, P., Ye, Z., Hommond, H. H., Yu, X., Lin, J., Chen, G., et al. (2008). Improved efficiency and pace of generating induced pluripotent stem cells from human adult and fetal fibroblasts. *Stem Cells* 26, 1998–2005. doi: 10.1634/stemcells.2008-0346
- Marson, A., Foreman, R., Chevalier, B., Bilodeau, S., Kahn, M., Young, R. A., et al. (2008). Wnt signaling promotes reprogramming of somatic cells to pluripotency. *Cell Stem Cell* 3, 132–135. doi: 10.1016/j.stem.2008.06.019
- McNeish, J., Roach, M., Hambor, J., Mather, R. J., Weibley, L., Lazzaro, J., et al. (2010). High throughput screening in embryonic stem cell derived neurons identifies potentiators of a-amino-3-hydroxyl-5-methyl-4-isoxazolepropionate-type glutamate receptors. *J. Biol. Chem.* 285, 17209–17217. doi: 10.1074/jbc.M109.098814
- Mikkelsen, T. S., Hanna, J., Zhang, X., Ku, M., Wernig, M., Schorderet, P., et al. (2008). Dissecting direct reprogramming through integrative genomic analysis. *Nature* 454, 49–55. doi: 10.1038/nature07056
- Moad, M., Pal, D., Hepburn, A. C., Williamson, S. C., Wilson, L., Lako, M., et al. (2013). A novel model of urinary tract differentiation, tissue regeneration, and disease: reprogramming human prostate and bladder cells into induced pluripotent stem cells. *Eur. Urol.* 64, 753–761. doi: 10.1016/j.eururo.2013.03.054
- Nguyen, H. N., Byers, B., Cord, B., Shcheglovitov, A., Byrne, J., Gujar, P., et al. (2011). LRRK2 mutant iPSC-derived DA neurons demonstrate increased susceptibility to oxidative stress. *Cell Stem Cell.* 8, 267–280. doi: 10.1016/j.stem.2011.01.013
- Nori, S., Okada, Y., Yasuda, K., Tsuji, O., Takahashi, Y., Kobayashi, Y., et al. (2011). Human-induced pluripotent stem-cell-derived neurospheres promote motor functional recovery after spinal cord injury in mice. *Proc. Natl. Acad. Sci. U.S.A.* 108, 16825–16830. doi: 10.1073/pnas.1108077108
- Okita, K., Ichisaka, T., and Yamanaka, S. (2007). Generation of germline-competent induced pluripotent stem cells. *Nature* 448, 313–317. doi: 10.1038/nature05934



- Okita, K., Nakagawa, M., Hyenjong, H., Ichisaka, T., and Yamanaka, S. (2008). Generation of mouse induced pluripotent stem cells without viral vectors. *Science* 322, 949–953. doi: 10.1126/science.1164270
- Pappas, J. J., and Yang, P. C. (2008). Human ESC vs. iPSC- Pros and Cons. *J. Cardiovasc. Trans. Res.* 1, 96–99. doi: 10.1007/s12265-008-9032-2
- Park, E. T., Gum, J. R., Kakar, S., Kwon, S. W., Deng, G., and Kim, Y. S. (2008c). Aberrant expression of SOX2 upregulates MUC5AC gastric foveolar mucin in mucinous cancers of the colorectum and related lesions. *Int. J. Cancer* 122, 1253–1260. doi: 10.1002/ijc.23225
- Park, I. H., Arora, N., Huo, H., Maherali, N., Ahfeldt, T., Shimamura, A., et al. (2008b). Disease-specific induced pluripotent stem cells. *Cell* 134, 877–886. doi: 10.1016/j.cell.2008.07.041
- Park, I. H., Zhao, R., West, J. A., Yabuuchi, A., Huo, H., Ince, T. A., et al. (2008a). Reprogramming of human somatic cells to pluripotency with defined factors. *Nature* 451, 141–146. doi: 10.1038/nature06534
- Rashid, S. T., Corbinau, S., Hannan, N., Marciniak, S. J., Miranda, E., Alexander, G., et al. (2010). Modeling inherited metabolic disorders of the liver using human induced pluripotent stem cells. *J. Clin. Invest.* 120, 3127–3136. doi: 10.1172/JCI43122
- Rosen, D. R., Siddique, T., Patterson, D., Figlewicz, D. A., Sapp, P., Hentati, A., et al. (1993). Mutations in Cu/Zn superoxide dismutase gene are associated with familial amyotrophic lateral sclerosis. *Nature* 362, 59–62. doi: 10.1038/362059a0
- Ruiz, S., Brennand, K., Panopoulos, A. D., Herreras, A., Gage, F. H., and Izpisua-Belmonte, J. C. (2010). High-efficient generation of induced pluripotent stem cells from human astrocytes. *PLoS ONE* 5:e15526. doi: 10.1371/journal.pone.0015526
- Sato, T., Joyner, A. L., and Nakamura, H. (2004). How does Fgf signaling from the isthmus organizer induce midbrain and cerebellum development? *Dev. Growth Differ.* 46, 487–494. doi: 10.1111/j.1440-169x.2004.00769.x
- Sauer, A. V., Morbach, H., Brigida, I., Ng, Y. S., Aiuti, A., and Meffre, E. (2012). Defective B cell tolerance in adenosine deaminase deficiency is corrected by gene therapy. *J. Clin. Invest.* 122, 2141–2152. doi: 10.1172/JCI61788
- Seiler, A., Visan, A., Buesen, R., Genschow, E., and Spielmann, H. (2004). Improvement of an *in vitro* stem cell assay for developmental toxicity: the use of molecular endpoints in the embryonic stem cell test. *Reprod. Toxicol.* 18, 231–240. doi: 10.1016/j.reprotox.2003.10.015
- Seki, T., Yuasa, S., Oda, M., Egashira, T., Yae, K., Kusumoto, D., et al. (2010). Generation of induced pluripotent stem cells from human terminally differentiated circulating T cells. *Cell Stem Cell* 7, 11–14. doi: 10.1016/j.stem.2010.06.003
- Shefner, J. M., Cudkovic, M. E., Schoenfeld, D., Conrad, T., Taft, J., Chilton, M., et al. (2004). NEALS Consortium. A clinical trial of creatine in ALS. *Neurology* 63, 1656–1661. doi: 10.1212/01.WNL.0000142992.81995.F0
- Shi, Y., Desponts, C., Do, J. T., Hahm, H. S., Scholer, H. R., and Ding, S. (2008a). Induction of pluripotent stem cells from mouse embryonic fibroblasts by Oct4 and Klf4 with small-molecule compounds. *Cell Stem Cell* 3, 568–574. doi: 10.1016/j.stem.2008.10.004
- Shi, Y., Do, J. T., Desponts, C., Hahm, H. S., Scholer, H. R., and Ding, S. (2008b). A combined chemical and genetic approach for the generation of induced pluripotent stem cells. *Cell Stem Cell* 2, 525–528. doi: 10.1016/j.stem.2008.05.011
- Silva, J., Barrandon, O., Nichols, J., Kawaguchi, J., Theunissen, T. W., and Smith, A. (2008). Promotion of reprogramming to ground state pluripotency by signal inhibition. *PLoS Biol.* 6:e253. doi: 10.1371/journal.pbio.0060253
- Soejitno, A., and Prayudi, P. K. A. (2011). The prospect of induced pluripotent stem cells for diabetes mellitus treatment. *Ther. Adv. Endocrinol. Metab.* 2, 197–210. doi: 10.1177/2042018811420198
- Soldner, F., Hockemeyer, D., Beard, C., Gao, Q., Bell, G. W., Cook, E. G., et al. (2009). Parkinson's disease patient derived induced pluripotent stem cells free of viral reprogramming factors. *Cell* 136, 964–977. doi: 10.1016/j.cell.2009.02.013
- Sollano, J. A., Kirsch, J. M., Bala, M. V., Chambers, M. G., and Harpole, L. H. (2008). The economics of drug discovery and the ultimate valuation of pharmacotherapies in the marketplace. *Clin. Pharmacol. Ther.* 84, 263–266. doi: 10.1038/clpt.2008.117
- Somers, A., Jean, J. C., Sommer, C. A., Omari, A., Ford, C. C., Mills, J. A., et al. (2010). Generation of transgene-free lung disease-specific human induced pluripotent stem cells using a single excisable lentiviral stem cell cassette. *Stem Cells* 28, 1728–1740. doi: 10.1002/stem.495
- Song, B., Niclis, J. V., Alikhan, M. A., Sakkal, S., Sylvain, A., Kerr, P. G., et al. (2011). Generation of induced pluripotent stem cells from human kidney mesangial cells. *J. Am. Soc. Nephrol.* 22, 1213–1220. doi: 10.1681/ASN.2010101022
- Stadtfeld, M., Maherali, N., Breault, D. T., and Hochedlinger, K. (2008a). Defining molecular cornerstones during fibroblast to iPSC cell reprogramming in mouse. *Cell Stem Cell* 2, 230–240. doi: 10.1016/j.stem.2008.02.001
- Stadtfeld, M., Nagaya, M., Utikal, J., Weir, G., and Hochedlinger, K. (2008b). Induced pluripotent stem cells generated without viral integration. *Science* 322, 945–949. doi: 10.1126/science.1162494
- Sugii, S., Kida, Y., Kawamura, T., Suzuki, J., Vassena, R., Yin, Y. Q., et al. (2010). Human and mouse adipose-derived cells support feeder-independent induction of pluripotent stem cells. *Proc. Natl. Acad. Sci. U.S.A.* 107, 3558–3563. doi: 10.1073/pnas.0910172106
- Sullivan, G. J., Hay, D. C., Park, I. H., Fletcher, J., Hannoun, Z., Payne, C. M., et al. (2010). Generation of functional human hepatic endoderm from human induced pluripotent stem cells. *Hepatology* 51, 329–335. doi: 10.1002/hep.23335
- Suzuki, K., Mitsui, K., Aizawa, E., Hasegawa, K., Kawase, E., Yamagishi, T., et al. (2008). Highly efficient transient gene expression and gene targeting in primate embryonic stem cells with helper-dependent adenoviral vectors. *Proc. Natl. Acad. Sci. U.S.A.* 105, 13781–13786. doi: 10.1073/pnas.0806976105
- Suzuki, N., Yamazaki, S., Yamaguchi, T., Okabe, M., Masaki, H., Takaki, S., et al. (2013). Generation of engraftable hematopoietic stem cells from induced pluripotent stem cells by way of teratoma formation. *Mol. Ther.* 21, 1424–1431. doi: 10.1038/mt.2013.71
- Tada, M., Takahama, Y., Abe, K., Nakatsuji, N., and Tada, T. (2001). Nuclear reprogramming of somatic cells by *in vitro* hybridization with ES cells. *Curr. Biol.* 11, 1553–1558. doi: 10.1016/S0960-9822(01)00459-6
- Takahashi, K., Ichisaka, T., and Yamanaka, S. (2006b). Identification of genes involved in tumor-like properties of embryonic stem cells. *Methods Mol. Biol.* 329, 449–458. doi: 10.1385/1-59745-037-5:449
- Takahashi, K., and Yamanaka, S. (2006a). Induction of pluripotent stem cells from mouse embryonic and adult fibroblast cultures by defined factors. *Cell* 126, 663–676. doi: 10.1016/j.cell.2006.07.024
- Tan, Q., Lui, P. P. Y., Rui, Y. F., and Wong, Y. M. (2012). Comparison of potentials of stem cells from tendon and bone marrow for musculoskeletal tissue engineering. *Tissue Eng. Part A* 18, 840–851. doi: 10.1089/ten.tea.2011.0362
- Tanaka, T., Tohyama, S., Murata, M., Nomura, F., Kaneko, T., Chen, H., et al. (2009). *In vitro* pharmacologic testing using human induced pluripotent stem cell-derived cardiomyocytes. *Biochem. Biophys. Res. Commun.* 385, 497–502. doi: 10.1016/j.bbrc.2009.05.073
- Thomson, J. A., Itskovitz-Eldor, J., Shapiro, S. S., Waknitz, M. A., Swiergiel, J. J., Marshall, V. S., et al. (1998). Embryonic stem cell lines derived from human blastocysts. *Science* 282, 1145–1147. doi: 10.1126/science.282.5391.1145
- Till, J. E., and McCulloch, E. A. (1961). A direct measurement of the radiation sensitivity of normal mouse bone marrow cells. *Radiat. Res.* 14, 213–222. doi: 10.2307/3570892
- Tulpule, A., Kelley, J. M., Lensch, M. W., McPherson, J., Park, I. H., Hartung, O., et al. (2013). Pluripotent stem cell models of Shwachman-Diamond syndrome reveal a common mechanism for pancreatic and hematopoietic dysfunction. *Cell Stem Cell* 12, 727–736. doi: 10.1016/j.stem.2013.04.002
- Utikal, J., Maherali, N., Kulalert, W., and Hochedlinger, K. (2009). Sox2 is dispensable for the reprogramming of melanocytes and melanoma cells into induced pluripotent stem cells. *J. Cell Sci.* 122, 3502–3510. doi: 10.1242/jcs.054783
- Wang, X. M., Yik, W. Y., Zhang, P., Lu, W., Dranchak, P. K., Shibata, D., et al. (2012). The gene expression profiles of induced pluripotent stem cells from individuals with childhood cerebral adrenoleukodystrophy are consistent with proposed mechanisms of pathogenesis. *Stem Cell Res. Ther.* 3, 39. doi: 10.1186/scrt130
- Warren, L., Manos, P. D., Ahfeldt, T., Loh, Y. H., Li, H., Lau, F., et al. (2010). Highly efficient reprogramming to pluripotency and directed differentiation of human cells with synthetic modified mRNA. *Cell Stem Cell* 7, 618–630. doi: 10.1016/j.stem.2010.08.012
- Wilmot, I., Schnieke, A. E., McWhir, J., Kind, A. J., and Campbell, K. H. (1997). Viable offspring derived from fetal and adult mammalian cells. *Nature* 385, 810–813. doi: 10.1038/385810a0
- Wobus, A. M., and Loser, P. (2011). Present state and future perspectives of using pluripotent stem cells in toxicology research. *Arch. Toxicol.* 85, 79–117. doi: 10.1007/s00204-010-0641-6
- Woltjen, K., Michael, I. P., Mohseni, P., Desai, R., Mileikovsky, M., Hämmäläinen, R., et al. (2009). piggyBac transposition reprograms fibroblasts to induced pluripotent stem cells. *Nature* 458, 766–770. doi: 10.1038/nature07863
- Xu, D., Alipio, Z., Fink, L. M., Adcock, D. M., Yang, J., and Ward, D. C., (2009). Phenotypic correction of murine hemophilia A using an iPSC cell-based

- therapy. *Proc. Natl. Acad. Sci. U.S.A.* 106, 808–813. doi: 10.1073/pnas.0812090106
- Yazawa, M., Hsueh, B., Jia, X., Pasca, A. M., Bernstein, J. A., Hallmayer, J., et al. (2011). Using induced pluripotent stem cells to investigate cardiac phenotypes in Timothy syndrome. *Nature* 471, 230–234. doi: 10.1038/nature09855
- Ye, Z., Zhan, H., Mali, P., Dowey, S., Williams, D. M., Jang, Y. Y., et al. (2009). Human-induced pluripotent stem cells from blood cells of healthy donors and patients with acquired blood disorders. *Blood* 114, 5473–5480. doi: 10.1182/blood-2009-04-217406
- Yokoo, N., Baba, S., Kaichi, S., Niwa, A., Mima, T., Doi, H., et al. (2009). The effects of cardioactive drugs on cardiomyocytes derived from human induced pluripotent stem cells. *Biochem. Biophys. Res. Commun.* 387, 482–488. doi: 10.1016/j.bbrc.2009.07.052
- Yoshida, T., Ozawa, Y., Suzuki, K., Yuki, K., Ohyama, M., Akamatsu, W., et al. (2014). The use of induced pluripotent stem cells to reveal pathogenic gene mutations and explore treatments for retinitis pigmentosa. *Mol. Brain.* 7:45. doi: 10.1186/1756-6606-7-45
- Yoshida, Y., and Yamanaka, S. (2010). Recent stem cell advances: induced pluripotent stem cells for disease modeling and stem cell-based regeneration. *Circulation* 122, 80–87. doi: 10.1161/CIRCULATIONAHA.109.881433
- Yoshioka, N., Gros, E., Li, H., Kumar, S., Deacon, D. C., and Maron, C. (2013). Efficient generation of human iPSCs by a synthetic self-replicative RNA. *Cell Stem Cell* 13, 246–254. doi: 10.1016/j.stem.2013.06.001
- Yu, J., Hu, K., Smuga-Otto, K., Tian, S., Stewart, R., Slukvin, I. L., et al. (2009). Human induced pluripotent stem cells free of vector and transgene sequences. *Science* 324, 797–801. doi: 10.1126/science.1172482
- Yu, J., Vodyanik, M. A., Smuga-Otto, K., Antosiewicz-Bourget, J., Frane, J. L., Tian, S., et al. (2007). Induced pluripotent stem cell lines derived from human somatic cells. *Science* 318, 1917–1920. doi: 10.1126/science.1151526
- Yusa, K., Rad, R., Takeda, J., and Bradley, A. (2009). Generation of transgene-free induced pluripotent mouse stem cells by the piggyBac transposon. *Nat. Methods* 6, 363–369. doi: 10.1038/nmeth.1323
- Zhang, G., Shang, B., Yang, P., Cao, Z., Pan, Y., and Zhou, Q. (2012). Induced pluripotent stem cell consensus genes: implication for the risk of tumorigenesis and cancers in induced pluripotent stem cell therapy. *Stem Cells Dev.* 21, 955–964. doi: 10.1089/scd.2011.0649
- Zhang, M., Yang, C., Liu, H., and Sun, Y. (2013). Induced pluripotent stem cells are sensitive to DNA damage. *Genomics Proteomics Bioinformatics* 11, 320–326. doi: 10.1016/j.gpb.2013.09.006
- Zhao, Y., Yin, X., Qin, H., Zhu, F., Liu, H., Yang, W., et al. (2008). Two supporting factors greatly improve the efficiency of human iPSC generation. *Cell Stem Cell* 3, 475–479. doi: 10.1016/j.stem.2008.10.002
- Zhou, Q., Brown, J., Kanarek, A., Rajagopal, J., and Melton, D. A. (2008). *In vivo* reprogramming of adult pancreatic exocrine cells to  $\beta$ -cells. *Nature* 455, 627–632. doi: 10.1038/nature07314
- Zhou, T., Benda, C., Dunzinger, S., Huang, Y., Ho, J. C., Yang, J., et al. (2012). Generation of human induced pluripotent stem cells from urine samples. *Nat. Protoc.* 7, 2080–2089. doi: 10.1038/nprot.2012.115

**Conflict of Interest Statement:** The authors declare that the research was conducted in the absence of any commercial or financial relationships that could be construed as a potential conflict of interest.

Received: 05 November 2014; accepted: 06 January 2015; published online: 02 February 2015.

Citation: Singh VK, Kalsan M, Kumar N, Saini A and Chandra R (2015) Induced pluripotent stem cells: applications in regenerative medicine, disease modeling, and drug discovery. *Front. Cell Dev. Biol.* 3:2. doi: 10.3389/fcell.2015.00002

This article was submitted to *Stem Cell Research*, a section of the journal *Frontiers in Cell and Developmental Biology*.

Copyright © 2015 Singh, Kalsan, Kumar, Saini and Chandra. This is an open-access article distributed under the terms of the Creative Commons Attribution License (CC BY). The use, distribution or reproduction in other forums is permitted, provided the original author(s) or licensor are credited and that the original publication in this journal is cited, in accordance with accepted academic practice. No use, distribution or reproduction is permitted which does not comply with these terms.