



Metabolic Regulation of Organic Acid Biosynthesis in *Actinobacillus succinogenes*

Wenming Zhang^{1,2}, Qiao Yang¹, Min Wu¹, Haojie Liu¹, Jie Zhou¹, Weiliang Dong^{1,2}, Jiangfeng Ma^{1,2}, Min Jiang^{1,2*} and Fengxue Xin^{1,2*}

¹ State Key Laboratory of Materials-Oriented Chemical Engineering, College of Biotechnology and Pharmaceutical Engineering, Nanjing Tech University, Nanjing, China, ² Jiangsu National Synergetic Innovation Center for Advanced Materials, Nanjing Tech University, Nanjing, China

OPEN ACCESS

Edited by:

Rongming Liu,
University of Colorado Boulder,
United States

Reviewed by:

Jianmin Xing,
Institute of Process Engineering
(CAS), China
Chuang Xue,
Dalian University of Technology
(DUT), China

*Correspondence:

Min Jiang
bioengine@njtech.edu.cn
Fengxue Xin
xinfengxue@njtech.edu.cn

Specialty section:

This article was submitted to
Industrial Biotechnology,
a section of the journal
Frontiers in Bioengineering and
Biotechnology

Received: 19 July 2019

Accepted: 27 August 2019

Published: 18 September 2019

Citation:

Zhang W, Yang Q, Wu M, Liu H,
Zhou J, Dong W, Ma J, Jiang M and
Xin F (2019) Metabolic Regulation of
Organic Acid Biosynthesis in
Actinobacillus succinogenes.
Front. Bioeng. Biotechnol. 7:216.
doi: 10.3389/fbioe.2019.00216

Actinobacillus succinogenes is one of the most promising strains for succinic acid production; however, the lack of efficient genetic tools for strain modification development hinders its further application. In this study, a markerless knockout method for *A. succinogenes* using in-frame deletion was first developed. The resulting $\Delta pflA$ (encode pyruvate formate lyase 1-activating protein) strain displayed distinctive organic acid synthesis capacity under different cultivation modes. Additional acetate accumulation was observed in the $\Delta pflA$ strain relative to that of the wild type under aerobic conditions, indicating that acetate biosynthetic pathway was activated. Importantly, pyruvate was completely converted to lactate under anaerobic fermentation. The transcription analysis and enzyme assay revealed that the expression level and specific activity of lactate dehydrogenase (LDH) were significantly increased. In addition, the mRNA expression level of *ldh* was nearly increased 85-fold compared to that of the wild-type strain during aerobic–anaerobic dual-phase fermentation, resulting in 43.05 g/L lactate. These results demonstrate that *pflA* plays an important role in the regulation of C3 flux distribution. The deletion of *pflA* leads to the improvement of acetic acid production under aerobic conditions and activates lactic acid biosynthesis under anaerobic conditions. This study will help elaborate the mechanism governing organic acid biosynthesis in *A. succinogenes*.

Keywords: *Actinobacillus succinogenes*, organic acid, pyruvate formate lyase 1-activating enzyme, metabolic engineering, fermentation

INTRODUCTION

Microbial production of organic acid from renewable resources is a promising and sustainable approach due to its ecological and economical advantages (Kamzolova et al., 2014). For example, succinic acid has been identified as one of the top 12 chemical building blocks according to the US Department of Energy, which can be synthesized through microbial fermentation (Mckinlay et al., 2007b; Zhang et al., 2018b). *Actinobacillus succinogenes*, a facultative anaerobe and natural succinate producer, is one of the most promising strains for succinic acid production due to its wide carbon utilization spectrum and robustness to environment (Mckinlay et al., 2005; Pateraki et al., 2016). Various low-cost feedstocks have been used for succinate production by using *A. succinogenes*, including corncob (Zhong et al., 2015), corn stover

(Borges and Pereira, 2011), sugarcane bagasse hemicellulose hydrolysate (Li et al., 2011), etc. It should be noticed that other organic acids, such as pyruvic and lactic acids, were also accumulated under different cultivation modes, taking advantage of its unique incomplete TCA cycle. For instance, *A. succinogenes* NJ113 has been reported to be a potential industrial application for the bioproduction of pyruvic acid under microaerobic fermentation condition, and dissolved oxygen environment was found to have a vital role in promoting pyruvic acid production (Wang et al., 2016). Initial oxygen aeration was also necessary to enhance lactic acid biosynthetic capacity for *A. succinogenes* 130Z^T in subsequent anaerobic cultivation (Li et al., 2010). Conversely, physiological changes during aerobic growth of engineered *E. coli* strain could significantly affect succinate production in the subsequent anaerobic phase (Vemuri et al., 2002).

Currently, metabolic engineering strategy has attracted increasing attention to develop industrially competitive microorganisms, such as *Mannheimia succiniciproducens*, *Escherichia coli*, *Corynebacterium glutamicum*, *Clostridium acetobutylicum*, *Saccharomyces cerevisiae*, and *Yarrowia lipolytica* (Li et al., 2016; Ahn et al., 2017; Chung et al., 2017; Cui et al., 2017; Franco-Duarte et al., 2017; Xue et al., 2017). To improve succinic acid production, some cases regarding genetic modification of *A. succinogenes* have been reported, including enhancement of pathways involved in succinic acid synthesis and deletion of pathways involved in byproduct accumulation (Joshi et al., 2014; Guarnieri et al., 2017). For example, overexpression of the key enzymes (such as malate dehydrogenase) in the reductive branch of the TCA cycle enhanced flux to succinic acid, resulting in titer, rate, and yield enhancements (Guarnieri et al., 2017). A single-knockout mutant of the pyruvate formate lyase (PFL, encoded by *pflB*) was obtained using natural transformation method employing a positive selection marker (isocitrate dehydrogenase), which will effectively eliminate formate biosynthesis (Joshi et al., 2014). Thereafter, a series of single-knockout mutants and double-knockout mutants were constructed using electroporation employing antibiotic resistance marker to drive carbon flux into succinic acid (Guarnieri et al., 2017). However, it should be noticed that delayed bacterial growth, sugar utilization, and succinic acid biosynthesis were observed in knockout mutants compared with the wild strain, though formation of by-products including acetate and formate were effectively reduced. Thus, the strategy to improve the production of succinic acid through the removal of competitive pathways in *A. succinogenes* was still in vain.

Compared to metabolic gene knockouts, change of corresponding protein activity might be better to improve strain's growth performance. For instance, there is an activation system composed of activating factor and coenzyme under anaerobic conditions, which can convert the inactive PFL pro-enzyme into active PFL by amino acid free radical activation (Rodel et al., 1988). Pyruvate formate lyase I-activating protein (encoded by *pflA*) is usually an activator to *pflB*. It was reported that deletion of *pflA* can increase succinic acid production from glycerol in *E. coli* under anaerobic conditions (Mienda et al., 2018). Protein homology analysis method showed that *pflA*

can activate *pflB* under anaerobic conditions in *A. succinogenes* (Zhang et al., 2018a). These data provide a novel gene knockout target for increasing succinate production in *A. succinogenes*.

In this study, genetic tools for markerless gene knockout by in-frame deletion was first developed. The metabolic regulation of organic acid biosynthetic in *A. succinogenes* $\Delta pflA$ strain under different fermentation strategies was also investigated. To elucidate the mechanism underlying the increased different organic acids production, the transcriptional level of key genes involved in metabolic pathway was evaluated. In this work, the effect of the deletion of *pflA* on organic acids production in *A. succinogenes* was studied. Additionally, the engineered strain represents a promising role for acetate or lactate production.

MATERIALS AND METHODS

Strains and Media

Actinobacillus succinogenes 130Z (ATCC 55618) was obtained from the American Type Culture Collection. Wild-type and engineered strains were cultivated in sterile seed medium YC (containing the following: 5 g/L yeast extract, 9.6 g/L NaH₂PO₄·2H₂O, 15.5 g/L K₂HPO₄·3H₂O, 10 g/L NaHCO₃, 10 g/L glucose, 1 g/L NaCl, and 2.5 g/L corn steep liquor) at 37°C and 200 rpm. *E. coli* SM10 λpir , provided by Professor Lianrong Wang (Wuhan University), was used as the donor strain to allow efficient replication of the suicide plasmid and grown in Luria-Bertani (LB) medium. The fermentation medium consisted of 10 g/L yeast extract, 1.36 g/L NaAc, 0.3 g/L Na₂HPO₄·12H₂O, 1.6 g/L Na₂HPO₄·2H₂O, 3 g/L K₂HPO₄, 1 g/L NaCl, 0.2 g/L MgCl₂·6H₂O, 7.5 g/L corn steep liquor, and 0.2 g/L CaCl₂. Glucose was added after sterilization at a concentration of 30–50 g/L for fermentation.

DNA Manipulation and Conjugation

To construct a knockout cassette, the 1.5-kb up- and downstream regions of *pflA* gene were individually amplified by PCRs from genomic DNA of *A. succinogenes* using primers listed in **Supplementary Table 1**. Two purified fragments were ligated to a shuttle suicide plasmid pJC4 using One Step Cloning Kit (Vazyme, China), thereafter naturally transformed into *E. coli* SM10 λpir .

Recipient strain *A. succinogenes* and donor bacteria were grown in media until exponential phase. Cells were mixed at an equal ratio. Then, mixture cultures were harvested by centrifugation (4,500 × g, 3 min) and washed three times with LB medium at room temperature. Pellets were resuspended in 50 μ l of LB medium and spotted onto an LB plate. During anaerobic cultivation at 37°C, the shuttle suicide plasmid might enter the recipient strain from the donor bacteria. After 16 h of conjugation, cells were washed with LB medium and plated on the YC medium. For the selection of the first crossing-over and elimination of the donor strain, 34 μ g/ml of chloramphenicol was supplemented. Clones were checked by PCR analysis (with primers F₀ and down-rev, up-fwd and R₀). Subsequently, positive colony was plated on YC agar plates with 15% sucrose, which is a counter selectable marker to promote the second crossing-over. The plasmid could be excited from the chromosome, generating

wild-type strain or deletion mutant. Clones were checked with primers *pflA*-F₀ and *pflA*-R₀ by colony PCR.

Fermentation in Seal Bottles and Bioreactors

A 6% seed inoculum from overnight YC culture was added to 100-ml sealed bottles containing 30 ml of fermentation medium supplement with 30 g/L glucose and 16 g/L magnesium carbonate hydroxide to maintain the pH at 6.8 and the fermentation was carried out at 200 rpm and 37°C. The anaerobic condition was achieved by sparging CO₂ for 2 min (Dessie et al., 2018).

Bioreactor fermentations were performed in a 5-L fermentor (Bioflo 110, USA) containing 2 L of fermentation medium. The temperature was controlled at 37°C and the agitation at 300 rpm. The pH was maintained at 6.8 by supplementing 20% Na₂CO₃. During aerobic fermentation conditions, air was sparged at 1 vvm. While anaerobic conditions were created by sparging with CO₂ at a flow rate of 0.2 L/min. When the glucose concentration was lower than 10 g/L, 600 g/L glucose was fed into the fermentation medium until the final concentration was 50 g/L.

Enzymatic Assays

Cultures were harvested by centrifugation (4°C, 10,000 × g, 10 min) and washed twice with 50 mM Tris-HCl buffer (pH at 7.0). Pellets were resuspended in 100 mM Tris-HCl buffer (pH at 7.0) containing 2 mM DTT and 0.1 mM EDTA. Cell disruption by sonication was followed *via* centrifugation for 10 min at 10,000 × g at 4°C. The supernatant was used for all enzyme assays. The protein concentration was determined by the method of Bradford (1976).

The enzyme activity of pyruvate formate lyase was measured as described previously (Melchiorson et al., 2002). The lactate dehydrogenase (LDH) assay was performed based on Vanderwerf et al. (1997). One unit (U) was defined as the amount of enzyme catalyzing the conversion of 1 μmol of substrate per minute into specific products. Specific activity was defined as units per milligram of protein (Li et al., 2010).

Quantitative RT-PCR

Cultures grown under different cultivation conditions were subject to RNA extraction during 8 h in aerobic/anaerobic or 20 h in dual-phase fermentation. Takara RNAiso Plus (Takara) was used to extract total RNA. After eliminating genomic DNA by RNase-free DNase I (Takara), RNA was converted into cDNA using a cDNA synthesis kit (Takara).

SYBRs Premix Ex Taq™ kit purchased from Takara was used for RT-PCR. All experiments were performed in biological triplicates in 96-well plates using the ABI 7500 Real-Time PCR system (Applied Biosystems). The 16S rRNA gene was used to standardize the mRNA levels. Primer sequences for qRT-PCR are indicated in **Supplementary Table 1**. The mRNA level of the target genes was calculated *via* the $2^{-\Delta\Delta CT}$ method (Livak and Schmittgen, 2001).

Analytical Methods

Cell growth was determined by OD₆₀₀ in an AOE INSTRUMENTS-UV1800 spectrophotometer. Organic acids

were measured by high-performance liquid chromatography (UitiMate 3000 HPLC system, Dionex, USA) equipped with an ion exchange column (Bio Rad Aminex HPX-87H column, USA) at 55°C, using a mobile phase of 5 mM H₂SO₄ at a flow rate of 0.6 ml/min and a UVD 170U ultraviolet detector at 215 nm for detection, as described previously (Zhang et al., 2018c). Glucose concentration in the fermentation broth was detected by a chronoamperometry method. In this detection process, a calibration line of current response vs. glucose concentration was first fitted by the continuous additions of a standard glucose concentration into a buffer solution. Then, the target sample was added to calculate its glucose concentration by using the calibration line (Jiang et al., 2016; Yang et al., 2017).

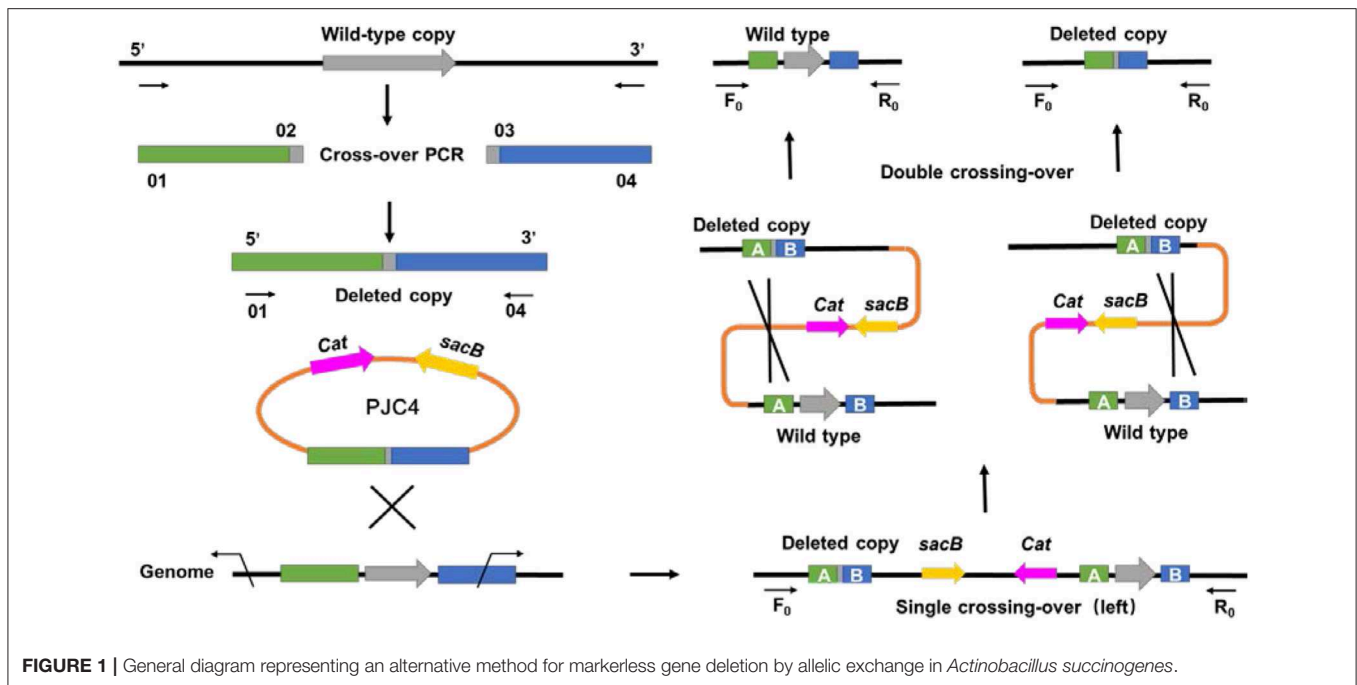
RESULTS AND DISCUSSION

A Markerless Knockout Method for *A. succinogenes* by In-Frame Deletion

Different from previous transformation methods, which adopted the positive selection marker with natural transformation or antibiotic resistance marker with electroporation (Joshi et al., 2014; Guarnieri et al., 2017), a markerless knockout method for *A. succinogenes* using conjugation was first developed. To create the gene deletion method in *A. succinogenes*, a shuttle suicide vector (pJC4) was employed, which carried *R6K ori* (the replication functional in *E. coli*), *cat* gene conferring chloramphenicol resistance, and *sacB* gene from *Bacillus subtilis* (the sucrose-sensitivity system). The replacement cassette contains two 1.5-kb regions flanking the target gene on the chromosome of *A. succinogenes*. After single crossing-over screened by chloramphenicol resistance and second crossing-over by sucrose counter selection, a markerless knockout mutant was obtained (**Figure 1**). Although markerless knockout method has been reported, the residual “scar” still exists in the chromosome at the site of the deletion, such as FLP sites, which will lead to large sections of the genome rather than two FRT sequences flanking the marker incorrect deletion when multiple genes have been consecutively deleted from one strain (Joshi et al., 2014). The mutants generated through in-frame deletion method in this study solved this problem efficiently and achieved real markerless knockout, providing a research basis for the metabolic engineering of *A. succinogenes*. Based on this method, pyruvate formate lyase 1-activating protein encoded by *pflA* in *A. succinogenes* 130Z was successfully knocked out and mutant was generated markerless.

Redistribution of Metabolic Products by Mutant With *pflA* Deletion

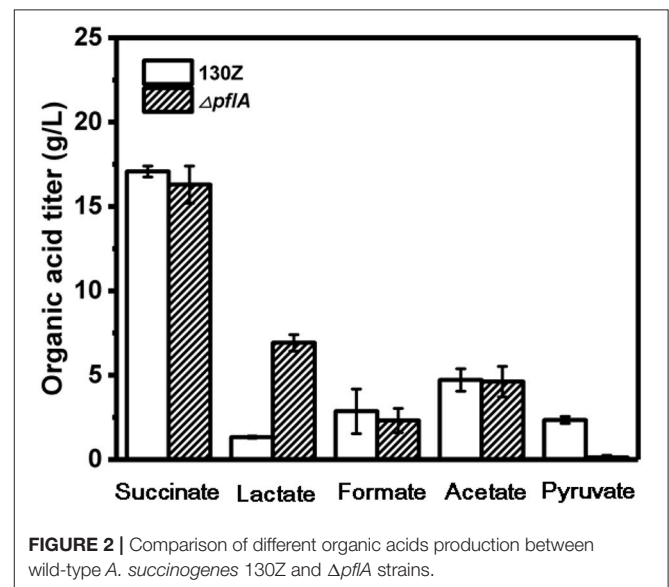
Generally, metabolic flux in *A. succinogenes* will be split into the following two branches under anaerobic conditions: (i) C3 pathways for formate, acetate, ethanol, and lactate production, and (ii) C4 pathway for succinate production. As known, the insufficient supply of reducing power is one main obstacle to achieve high succinic acid yield under anaerobic conditions, as succinic acid yield from glucose or other carbon sources strongly depends on ATP and NADH levels, which were mainly



produced by C3 pathways (Singh et al., 2011; Zhang et al., 2018c). However, the accumulation of by-products synthesized through C3 pathways will not only reduce the substrate utilization but also cause difficulties in the separation and purification steps. It was found that formate could be significantly reduced when PFLB catalyzing pyruvate into acetyl coenzyme A and formate was knocked out. However, the cell growth rate was also significantly decreased in $\Delta pflB$ strain. Succinate yield was still similar to that of wild-type strain. To relieve the negative effect by $pflB$ knockout, pyruvate formate lyase 1-activating protein ($pflA$) was further knocked out.

Wild-type and $\Delta pflA$ strain were cultivated in sealed bottles containing 30 g/L glucose. The titers of succinate, formate, and acetate in the $\Delta pflA$ strain were 15.78, 4.53, and 8.23 g/L, respectively, which were approximately equal to those of the wild-type strain (Figure 2). Results demonstrated that the absence of activating protein (PFLA) did not affect the expression of pyruvate formate lyase, and succinic acid production was not increased significantly. Interestingly, pyruvate, and lactate production were significantly changed. Pyruvate accumulation was observed in both wild-type and $\Delta pflB$ strains (Guarnieri et al., 2017), while traces of pyruvate accumulation (< 1 g/L) were observed in the $\Delta pflA$ strain, indicating that pyruvic acid was completely assimilated. Surprisingly, the $\Delta pflA$ strain displayed a significantly increased lactate accumulation capacity (6.92 g/L) with 5.77-fold improvement, which coincided with pyruvate assimilation (Figure 2). Conversely, no lactic acid accumulation was observed in the wild-type or $\Delta pflB$ strains.

To further investigate the effect of $pflA$ deletion on cell growth and metabolite profiles, batch fermentation of wild-type and $\Delta pflA$ strains was carried out under anaerobic conditions in a 5-L fermentor with 50 g/L of glucose. As illustrated



in Figure 3A, 40 g/L of glucose was consumed after 18 h of fermentation by the wild-type strain, and the maximal OD_{600} reached 7.07. However, cell growth and glucose consumption rates were slightly decreased by the $\Delta pflA$ strain with a maximal OD_{600} of 6.07 at 21 h. Complete glucose consumption was ultimately achieved after 50 h of cultivation (Figure 3B). Delayed glucose consumption and cell growth coincided well with delayed succinic acid production relative to that of the 130Z strain. 30.25 g/L succinic acid with a yield of 0.62 g/g was achieved, which was decreased by 10% when compared to that of control strain. The

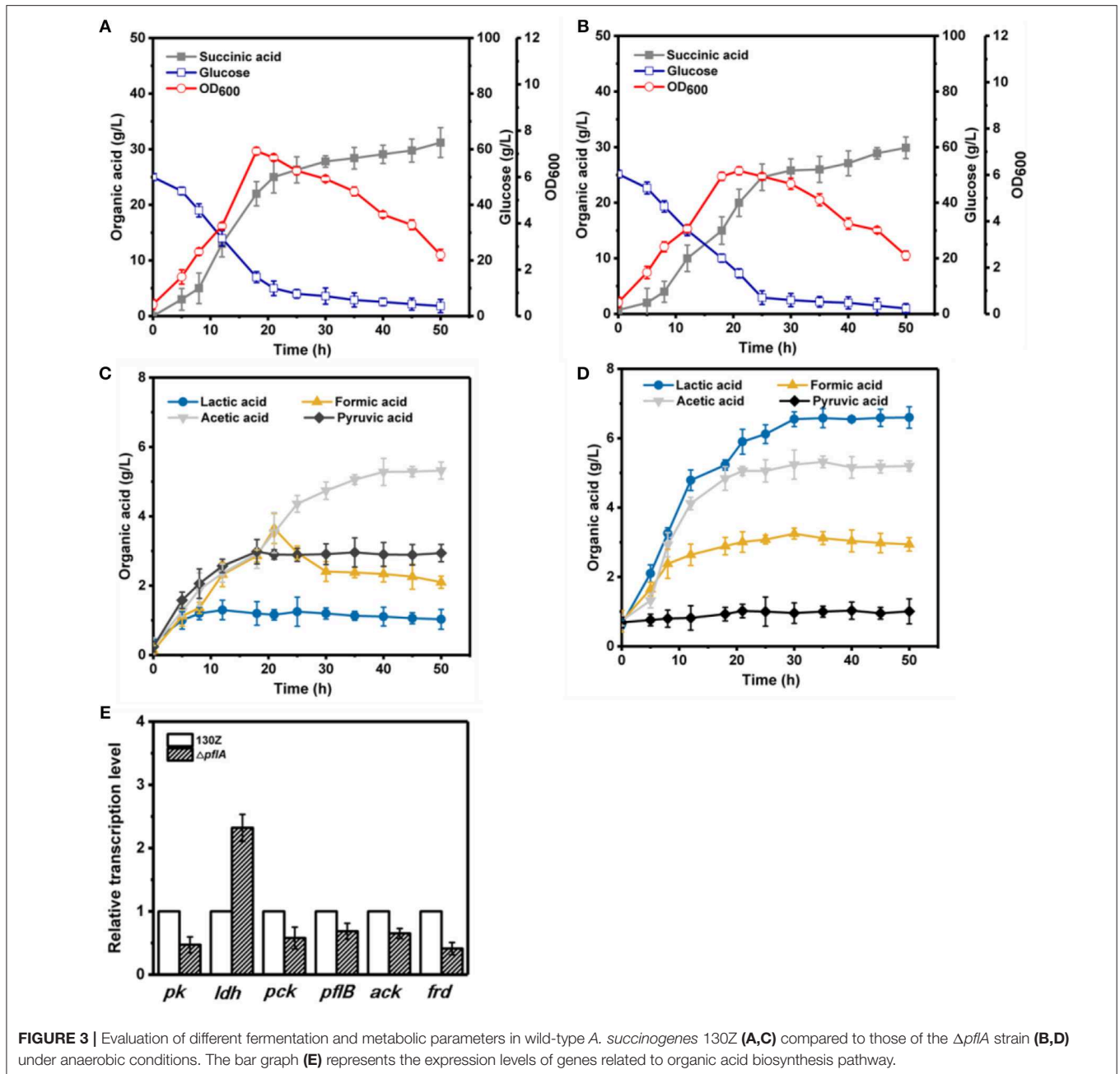


FIGURE 3 | Evaluation of different fermentation and metabolic parameters in wild-type *A. succinogenes* 130Z (A,C) compared to those of the $\Delta pflA$ strain (B,D) under anaerobic conditions. The bar graph (E) represents the expression levels of genes related to organic acid biosynthesis pathway.

strain $\Delta pflA$ showed similar acetic and formic acid accumulation profiles to that of wild type; acetic and formic production reached 5.32 and 2.26 g/L, respectively (Figure 3C). Notably, negligible amount of lactate accumulation was observed in strain 130Z, which is in agreement with the previously reported wild-type strain. Conversely, more lactate accumulation (6.43 g/L) and nearly complete elimination of pyruvate was observed by using the $\Delta pflA$ strain (Figure 3D), indicating that lactate flux was activated after removal of *pflA*. Although lactate accumulation was also observed in the $\Delta pflB \Delta ackA$ strain, pyruvate was still accumulated at early exponential phase and yet completely assimilated following 24 h of cultivation (Guarnieri et al., 2017), which is different from this study. Therefore, in addition to

knockout of both *ackA* and *pflB*, deletion of *pflA* can also lead to lactic acid generation, indicating that *pflA* plays a critical role in lactic acid biosynthesis in *A. succinogenes*.

Effect of *pflA* Knockout on the Expression of Key Genes Involved in Metabolic Pathway

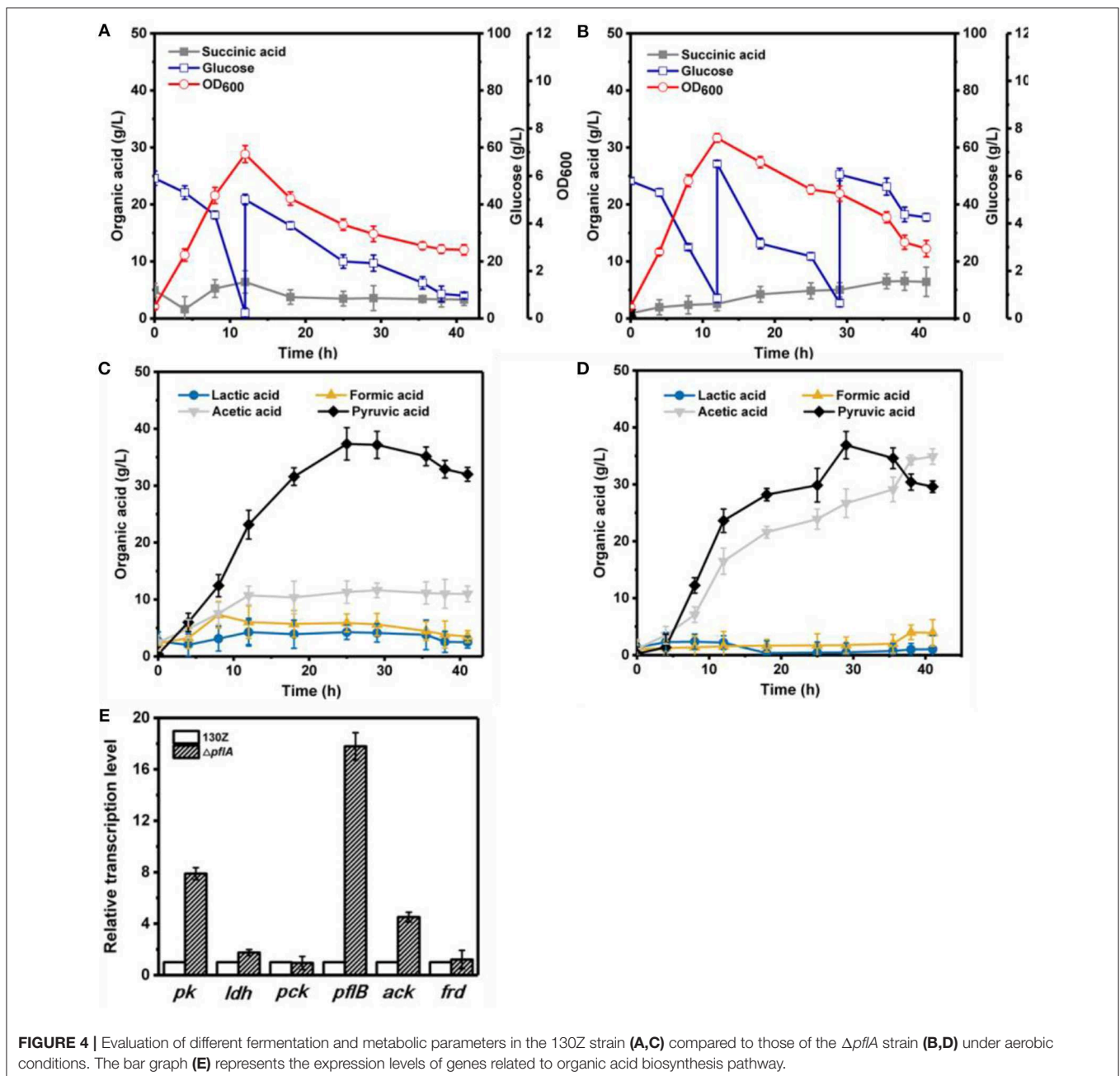
To examine the effect of *pflA* knockout on the gene expression in *A. succinogenes*, the expression levels of several key genes involved in succinic acid (*pck* encoding phosphoenolpyruvate carboxykinase, *frd* encoding fumarate reductase), pyruvic acid (*pk* encoding pyruvate kinase), acetic acid (*pfl* encoding

pyruvate formate lyase, *ack* encoding acetate kinase), and lactic acid formation (*ldh* encoding 6-lactate dehydrogenase) were investigated. Relative mRNA transcription levels of these genes at exponential phase for strain 130Z and $\Delta pflA$ were measured with RT-PCR. 16S rRNA copy number was used as internal reference.

As shown in **Figure 3E**, knockout of *pflA* could slightly down-regulate mRNA levels of all metabolite synthesis genes except *ldh*, which coincides with the prolonged bacterial growth and product synthesis in the $\Delta pflA$ strain. For example, the expression level of *pk* and *frd* was nearly 0.4-fold lower than that of strain 130Z.

TABLE 1 | Comparison of enzyme activities involved in organic acid formation in *Actinobacillus succinogenes* 130Z and $\Delta pflA$ grown anaerobically.

Strain	Total protein (mg/ml)	PFL activity (U/ml)	Specific activity (U/mg)	LDH activity (U/ml)	Specific activity (U/mg)
130Z	0.25 ± 0.02	4.56 ± 0.12	18.25 ± 0.26	3.25 ± 0.08	11.61 ± 0.32
$\Delta pflA$	0.29 ± 0.01	4.06 ± 0.15	17.65 ± 0.42	10.62 ± 0.27	30.34 ± 1.21



Surprisingly, the mRNA level of *ldh* in the $\Delta pflA$ strain was 2.3-fold higher than that of the wild-type strain, indicating that the lactic acid biosynthesis pathway might be activated by deletion of *pflA*.

In order to further investigate the metabolic regulation mechanism, the activities of two key enzymes PFL (pyruvate formate lyase) and LDH involved in C3 branch pathways were investigated. As shown in **Table 1**, PFL enzyme activities were similar between the wild-type (18.25 U/mg) and $\Delta pflA$ strains (17.65 U/mg), which is in agreement with the fermentation results. However, LDH specific activity was significantly increased in the $\Delta pflA$ strain, which was 2.62-fold higher

than that of the wild-type strain. The maximum activity was 30.34 U/mg, which coincides well with the mRNA level and lactate production. Taken together, these results indicated that the expression of pyruvate formate lyase in *A. succinogenes* does not depend on the activation of pyruvate formate lyase 1-activating protein, though its function notation in NCBI is to activate pyruvate formate lyase 1 under anaerobic conditions. Moreover, the absence of this protein might be beneficial for the carbon flux to lactic acid. Therefore, we speculated that the function of pyruvate formate lyase 1-activating protein might be a repressor for *ldh* gene transcription, which is different from *E. coli*.

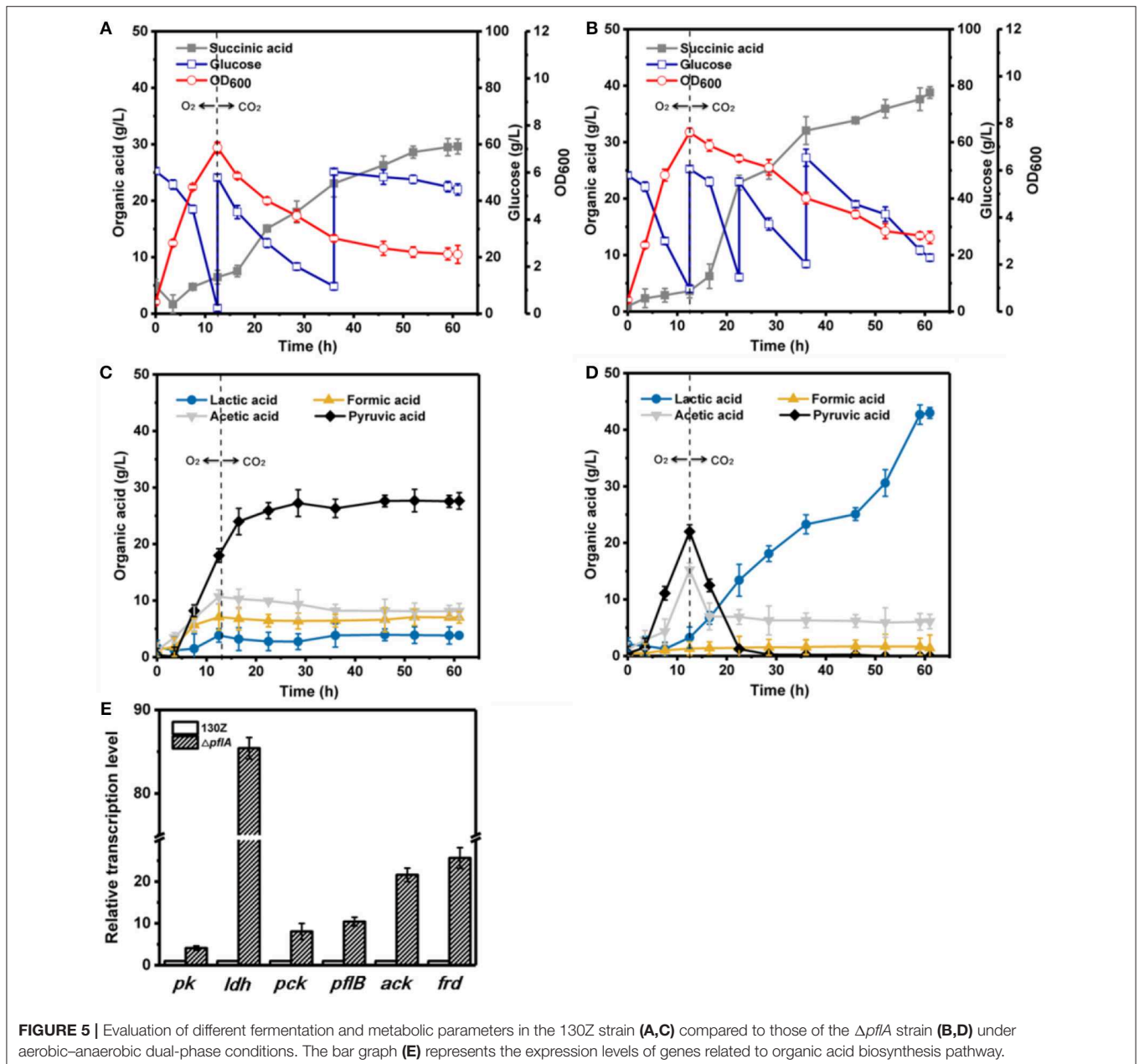


FIGURE 5 | Evaluation of different fermentation and metabolic parameters in the 130Z strain (A,C) compared to those of the $\Delta pflA$ strain (B,D) under aerobic–anaerobic dual-phase conditions. The bar graph (E) represents the expression levels of genes related to organic acid biosynthesis pathway.

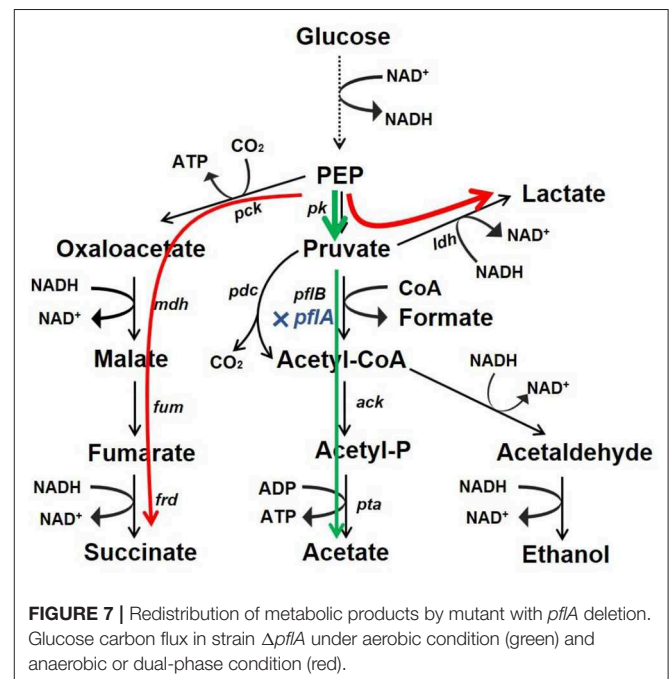
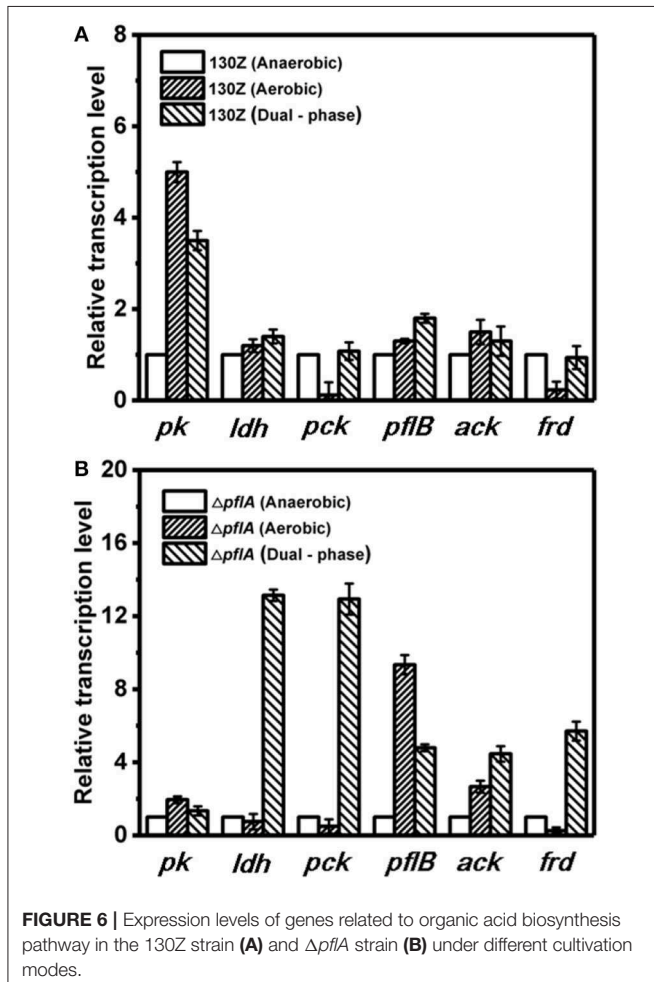
Organic Acid Production Under Different Fermentation Strategies

Actinobacillus succinogenes will change cell physiology and metabolite profile under different cultivation conditions, such as aerobic and anaerobic conditions. As mentioned above, the lactic acid biosynthesis pathway was activated after deletion of *pflA* under anaerobic conditions. To further investigate the effect of *pflA* deletion on cell growth and metabolic performance under aerobic and aerobic-anaerobic dual-phase cultivation modes, the fed-batch fermentation using wild-type 130Z and $\Delta pflA$ strain was conducted in a 5-L fermentor.

Under aerobic conditions, 82 g/L of glucose was completely consumed after 41 h by strain 130Z with a maximal OD₆₀₀ of 6.92 at 12 h (Figure 4A). Interestingly, strain $\Delta pflA$ displayed higher growth rate, which is obviously different from that under anaerobic conditions (Figure 4B). As a result, more glucose (105 g/L) was consumed with a maximal OD₆₀₀ of 7.64. As a main product, pyruvic acid accumulation profiles were similar between strain $\Delta pflA$ and 130Z, and the highest titer reached 36.90 and 37.36 g/L, respectively. The latter is in agreement with a previous study reported under microaerobic fermentation (Wang et al.,

2016). Surprisingly, massive acetic acid accumulation was also observed in the $\Delta pflA$ strain. The highest titer of acetic acid can reach 34.92 g/L, 13.7-fold titer enhancement (Figure 4D), indicating that acetic acid biosynthesis was enhanced and carbon flux was shifted to acetic acid after the deletion of *pflA* under aerobic conditions. As known, ATP generation is accompanying by acetic acid production (Guarnieri et al., 2017), leading to cell growth and glucose consumption improvement. Additionally, the $\Delta pflA$ strain displayed increased succinic acid accumulation capacity (6.43 g/L) with 48.06% enhancement. Conversely, a greater reduction in lactic and formic acid titer was observed in the $\Delta pflA$ strain relative to that of the wild type.

Under aerobic-anaerobic conditions, succinic, and pyruvic acids were main metabolic products with 29.62 and 27.64 g/L, respectively, from 96 g/L of glucose by using strain 130Z (Figure 5A). Pyruvic acid was significantly accumulated in the aerobic phase and still produced and even shifted to anaerobic condition (Figure 5C). Surprisingly, 142 g/L glucose (32.39% higher) was consumed in the $\Delta pflA$ strain, indicating the superior performance of bacteria growth. Final succinic acid titer (38.82 g/L) was also significantly enhanced with 23.72% improvement (Figure 5B). However, the pyruvic acid concentration was dramatically decreased in the $\Delta pflA$ strain when shifted to anaerobic condition. In addition, no pyruvic acid accumulation was observed at the end of fermentation with almost complete pyruvate reassimilation. As shown in Figure 5C, acetic acid production was slowly decreased under anaerobic phase with a final titer of 8.15 g/L. Moreover, lactic and formic acids production remained stable in the wild-type strain. These results showed that carbon flux distribution was shifted from C3 (pyruvic acid synthesis) toward C4 flux (succinic acid synthesis) when cultivation condition was shifted from an aerobic to an



anaerobic one. By contrast, sharp accumulation of lactic acid was observed by using $\Delta pflA$ strain under anaerobic conditions. The maximum of lactic acid production was 43.05 g/L at 60 h of cultivation, which was a nearly 11-fold increase compared to that of the wild-type strain (Figure 5D). Conversely, the acetic acid accumulation profiles were similar between wild-type and engineered strains, and a negligible amount of formic acid was detected in the whole fermentation. These results indicated that the removal of *pflA* could significantly enhance carbon flux to lactic acid under dual-phase cultivation conditions.

Qrt-PCR Analysis Under Different Cultivation Modes

To further elaborate the underlying mechanism responsible for organic acid synthesis, the expression levels of related genes were investigated. Previous work showed that the expression level of *ldh* in strain $\Delta pflA$ was much higher than that of the wild-type strain, while the expression level of other metabolite synthesis genes was slightly lower under anaerobic conditions (Figure 3). The expression levels of *pk*, *pfl*, and *ack* genes from the $\Delta pflA$ strain are significantly increased relative to that of the 130Z strain during aerobic fermentation, which coincides with acetic acid accumulation in the $\Delta pflA$ strain (Figures 4D,E). However, the mRNA level of all genes was significantly increased (> 4-fold) in the $\Delta pflA$ strain under dual-phase fermentation conditions, indicating that the strain has the superior performance of cell growth and metabolism (Figure 5E). Notably, the transcription level of *ldh* was increased nearly 85-fold, displaying a dramatically increased lactic acid accumulation capacity relative to that of the wild type. It is known that LDH is indeed encoded in its genome, while no lactate was produced in *A. succinogenes* (McKinlay et al., 2007a). The finding in the current paper suggests that a finely tuned system might be used to lactic acid biosynthesis.

Next, mRNA levels of key genes in the same strain under different conditions were also compared. As shown in Figure 6A, wild-type *A. succinogenes* showed the same transcription levels of *ldh* and *ack* among three kinds of cultivation modes. The expression levels of *pck* and *frd* genes were significantly down-regulated under aerobic conditions, in accordance with low carbon flux of SA-producing reductive C4 pathway. A similar phenomenon was observed in the $\Delta pflA$ strain. Specifically, the expression levels of *ldh*, *pck*, and *frd* genes under dual-phase conditions were much higher than those under other fermentation modes in the $\Delta pflA$ strain, leading to massive lactic acid and succinic acid accumulation (Figure 6B). However, although the expression level of *ack* was up-regulated in the

$\Delta pflA$ strain under both aerobic and dual-phase cultivation, higher acetic acid accumulation was observed in the aerobic condition. Instead, no difference in acetic acid production was found between anaerobic and dual-phase cultivation conditions (Figures 3D, 5D). Thus, it was speculated that an alternative route to acetic acid biosynthesis exists in *A. succinogenes*.

CONCLUSIONS

Microbial production of organic acid is a promising approach owing to advantages of being low cost, efficient, and environment friendly. In this work, we developed a markerless knockout method for *A. succinogenes*. It was found that C3 metabolic pathways were regulated by *pflA*, which was vital for organic acid synthesis. Moreover, the resulting $\Delta pflA$ strain was able to accumulate acetic acid under aerobic conditions and lactic acid under dual-phase fermentation (Figure 7). These results reveal a potential finely tuned mechanism in organic acid biosynthesis. Moreover, the study indicates that *A. succinogenes* is not only a promising succinate producer, but also potentially an excellent strain for the bioproduction of acetic acid and lactic acid.

DATA AVAILABILITY

All datasets generated for this study are included in the manuscript/Supplementary Files.

AUTHOR CONTRIBUTIONS

WZ designed and performed the experiments, analyzed the results, and wrote the manuscript. QY, MW, and HL assisted in experimental work and analytical work. JZ, WD, and JM assisted in the design of the study. MJ and FX revised the manuscript. All authors read and approved the final manuscript.

FUNDING

This work was supported by the National Natural Science Foundation of China (Grant No. 21706124) and the Jiangsu Synergetic Innovation Center for Advanced Bio-Manufacture of China.

SUPPLEMENTARY MATERIAL

The Supplementary Material for this article can be found online at: <https://www.frontiersin.org/articles/10.3389/fbioe.2019.00216/full#supplementary-material>

REFERENCES

- Ahn, J. H., Bang, J., Kim, W. J., and Lee, S. Y. (2017). Formic acid as a secondary substrate for succinic acid production by metabolically engineered *Mannheimia succiniciproducens*. *Biotechnol. Bioeng.* 114, 2837–2847. doi: 10.1002/bit.26435
- Borges, E. R., and Pereira, N. Jr. (2011). Succinic acid production from sugarcane bagasse hemicellulose hydrolysate by *Actinobacillus succinogenes*. *J. Ind. Microbiol. Biotechnol.* 38, 1001–1011. doi: 10.1007/s10295-010-0874-7
- Bradford, M. M. (1976). A rapid and sensitive method for the quantitation of microgram quantities of protein utilizing the principle of protein-dye binding. *Anal. Biochem.* 72, 248–254. doi: 10.1016/0003-2697(76)90527-3
- Chung, S. C., Park, J. S., Yun, J., and Park, J. H. (2017). Improvement of succinate production by release of end-product inhibition in *Corynebacterium glutamicum*. *Metab. Eng.* 40, 157–164. doi: 10.1016/j.ymben.2017.02.004
- Cui, Z. Y., Gao, C. J., Li, J. J., Hou, J., Lin, C. S. K., and Qi, Q. S. (2017). Engineering of unconventional yeast *Yarrowia lipolytica* for efficient

- succinic acid production from glycerol at low pH. *Metab. Eng.* 42, 126–133. doi: 10.1016/j.ymben.2017.06.007
- Dessie, W., Zhu, J., Xin, F., Zhang, W., Jiang, Y., Wu, H., et al. (2018). Bio-succinic acid production from coffee husk treated with thermochemical and fungal hydrolysis. *Bioproc. Biosyst. Eng.* 41, 1461–1470. doi: 10.1007/s00449-018-1974-4
- Franco-Duarte, R., Bessa, D., Goncalves, F., Martins, R., Silva-Ferreira, A. C., Schuller, D., et al. (2017). Genomic and transcriptomic analysis of *Saccharomyces cerevisiae* isolates with focus in succinic acid production. *FEMS Yeast Res.* 17:fox057. doi: 10.1093/femsyr/fox057
- Guarnieri, M. T., Chou, Y. C., Salvachua, D., Mohagheghi, A., John, P. C. S., Peterson, D. J., et al. (2017). Metabolic engineering of *Actinobacillus succinogenes* provides insights into succinic acid biosynthesis. *Appl. Environ. Microbiol.* 83:e00996–17. doi: 10.1128/AEM.00996-17
- Jiang, D. F., Chu, Z. Y., Peng, J. M., and Jin, W. Q. (2016). Screen-printed biosensor chips with Prussian blue nanocubes for the detection of physiological analytes. *Sens. Actuators Chem.* 228, 679–687. doi: 10.1016/j.snb.2016.01.076
- Joshi, R. V., Schindler, B. D., McPherson, N. R., Tiwari, K., and Vieille, C. (2014). Development of a markerless knockout method for *Actinobacillus succinogenes*. *Appl. Environ. Microbiol.* 80, 3053–3061. doi: 10.1128/AEM.00492-14
- Kamzolova, S. V., Vinokurova, N. G., Shemshura, O. N., Bekmakhanova, N. E., Lunina, J. N., Samoilenko, V. A., et al. (2014). The production of succinic acid by yeast *Yarrowia lipolytica* through a two-step process. *Appl. Microbiol. Biotechnol.* 98, 7959–7969. doi: 10.1007/s00253-014-5887-0
- Li, J., Zheng, X. Y., Fang, X. J., Liu, S. W., Chen, K. Q., Jiang, M., et al. (2011). A complete industrial system for economical succinic acid production by *Actinobacillus succinogenes*. *Bioresour. Technol.* 102, 6147–6152. doi: 10.1016/j.biortech.2011.02.093
- Li, Q., Wu, H., Li, Z. M., and Ye, Q. (2016). Enhanced succinate production from glycerol by engineered *Escherichia coli* strains. *Bioresour. Technol.* 218, 217–223. doi: 10.1016/j.biortech.2016.06.090
- Li, Q. A., Wang, D., Song, Z. Y., Zhou, W., Wu, Y., Xing, J. M., et al. (2010). Dual-phase fermentation enables *Actinobacillus succinogenes* 130Z(T) to be a potential role for high-level lactate production from the bioresource. *Bioresour. Technol.* 101, 7665–7667. doi: 10.1016/j.biortech.2010.04.058
- Livak, K. J., and Schmittgen, T. D. (2001). Analysis of relative gene expression data using real-time quantitative PCR and the 2(T)–(Delta Delta C) method. *Methods* 25, 402–408. doi: 10.1006/meth.2001.1262
- Mckinlay, J. B., Shachar-Hill, Y., Zeikus, J. G., and Vieille, C. (2007a). Determining *Actinobacillus succinogenes* metabolic pathways and fluxes by NMR and GC-MS analyses of ¹³C-labeled metabolic product isotopomers. *Metab. Eng.* 9, 177–192. doi: 10.1016/j.ymben.2006.10.006
- Mckinlay, J. B., Vieille, C., and Zeikus, J. G. (2007b). Prospects for a bio-based succinate industry. *Appl. Microbiol. Biotechnol.* 76, 727–740. doi: 10.1007/s00253-007-1057-y
- Mckinlay, J. B., Zeikus, J. G., and Vieille, C. (2005). Insights into *Actinobacillus succinogenes* fermentative metabolism in a chemically defined growth medium. *Appl. Environ. Microbiol.* 71, 6651–6656. doi: 10.1128/AEM.71.11.6651-6656.2005
- Melchiorson, C. R., Jokumsen, K. V., Villadsen, J., Israelsen, H., and Arnau, J. (2002). The level of pyruvate-formate lyase controls the shift from homolactic to mixed-acid product formation in *Lactococcus lactis*. *Appl. Microbiol. Biotechnol.* 58, 338–344. doi: 10.1007/s00253-001-0892-5
- Mienda, B. S., Adamu, A., and Shamsir, M. S. (2018). Model-guided metabolic gene knockout of pflA in *Escherichia coli* increases succinic acid production from glycerol carbon source. *Curr. Metabolomics* 6, 201–206. doi: 10.2174/2213235X06666181012143004
- Pateraki, C., Patsalou, M., Vlysidis, A., Kopsahelis, N., Webb, C., Koutinas, A. A., et al. (2016). *Actinobacillus succinogenes*: advances on succinic acid production and prospects for development of integrated biorefineries. *Biochem. Eng. J.* 112, 285–303. doi: 10.1016/j.bej.2016.04.005
- Rodel, W., Plaga, W., Frank, R., and Knappe, J. (1988). Primary structures of *Escherichia coli* pyruvate formate-lyase and pyruvate-formate-lyase-activating enzyme deduced from the DNA nucleotide sequences. *Eur. J. Biochem.* 177, 153–158. doi: 10.1111/j.1432-1033.1988.tb14356.x
- Singh, A., Soh, K. C., Hatzimanikatis, V., and Gill, R. T. (2011). Manipulating redox and ATP balancing for improved production of succinate in *E. coli*. *Metab. Eng.* 13, 76–81. doi: 10.1016/j.ymben.2010.10.006
- Vanderwerf, M. J., Guettler, M. V., Jain, M. K., and Zeikus, J. G. (1997). Environmental and physiological factors affecting the succinate product ratio during carbohydrate fermentation by *Actinobacillus* sp. 130Z. *Arch. Microbiol.* 167, 332–342. doi: 10.1007/s002030050452
- Vemuri, G. N., Eiteman, M. A., and Altman, E. (2002). Succinate production in dual-phase *Escherichia coli* fermentations depends on the time of transition from aerobic to anaerobic conditions. *J. Ind. Microbiol. Biotechnol.* 28, 325–332. doi: 10.1038/sj.jim.7000250
- Wang, Z., Xiao, W., Zhang, A. L., Ying, H. X., Chen, K. Q., and Ouyang, P. K. (2016). Potential industrial application of *Actinobacillus succinogenes* NJ113 for pyruvic acid production by microaerobic fermentation. *Korean J. Chem. Eng.* 33, 2908–2914. doi: 10.1007/s11814-016-0168-5
- Xue, C., Zhao, J., Chen, L., Yang, S. T., and Bai, F. (2017). Recent advances and state-of-the-art strategies in strain and process engineering for biobutanol production by *Clostridium acetobutylicum*. *Biotechnol. Adv.* 35, 310–322. doi: 10.1016/j.biortechadv.2017.01.007
- Yang, P. Q., Peng, J. M., Chu, Z. Y., Jiang, D. F., and Jin, W. Q. (2017). Facile synthesis of Prussian blue nanocubes/silver nanowires network as a water-based ink for the direct screen-printed flexible biosensor chips. *Biosens. Bioelectron.* 92, 709–717. doi: 10.1016/j.bios.2016.10.013
- Zhang, H., Naikun, S., Qin, Y., Zhu, J., Li, Y., Jiafa, W., et al. (2018a). Complete genome sequence of *Actinobacillus succinogenes* GXAS137, a highly efficient producer of succinic acid. *Genome Announc.* 6:e01562–17. doi: 10.1128/genomeA.01562-17
- Zhang, W., Zhu, J., Zhu, X., Song, M., Zhang, T., Xin, F., et al. (2018b). Expression of global regulator IrrE for improved succinate production under high salt stress by *Escherichia coli*. *Bioresour. Technol.* 254, 151–156. doi: 10.1016/j.biortech.2018.01.091
- Zhang, W. M., Zhang, T., Song, M., Dai, Z. X., Zhang, S. J., Xin, F. X., et al. (2018c). Metabolic engineering of *Escherichia coli* for high yield production of succinic acid driven by methanol. *ACS Synth. Biol.* 7, 2803–2811. doi: 10.1021/acssynbio.8b00109
- Zhong, Y., Ruan, Z., Zhong, Y., Archer, S., Liu, Y., and Liao, W. (2015). A self-sustaining advanced lignocellulosic biofuel production by integration of anaerobic digestion and aerobic fungal fermentation. *Bioresour. Technol.* 179, 173–179. doi: 10.1016/j.biortech.2014.12.013

Conflict of Interest Statement: The authors declare that the research was conducted in the absence of any commercial or financial relationships that could be construed as a potential conflict of interest.

Copyright © 2019 Zhang, Yang, Wu, Liu, Zhou, Dong, Ma, Jiang and Xin. This is an open-access article distributed under the terms of the Creative Commons Attribution License (CC BY). The use, distribution or reproduction in other forums is permitted, provided the original author(s) and the copyright owner(s) are credited and that the original publication in this journal is cited, in accordance with accepted academic practice. No use, distribution or reproduction is permitted which does not comply with these terms.