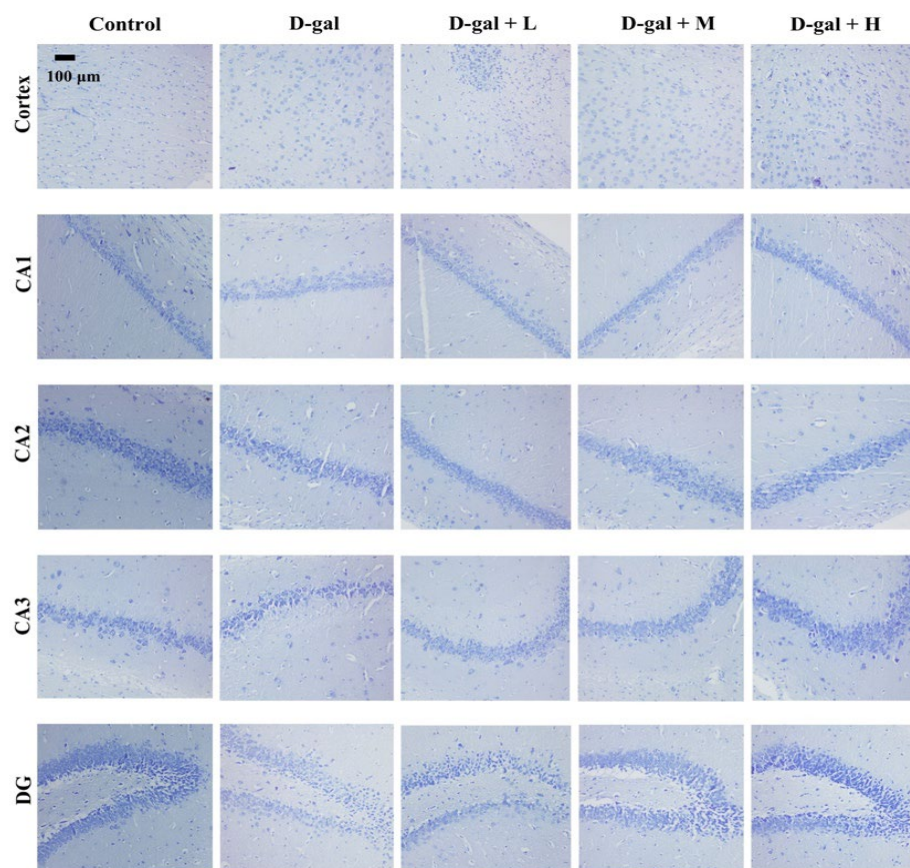
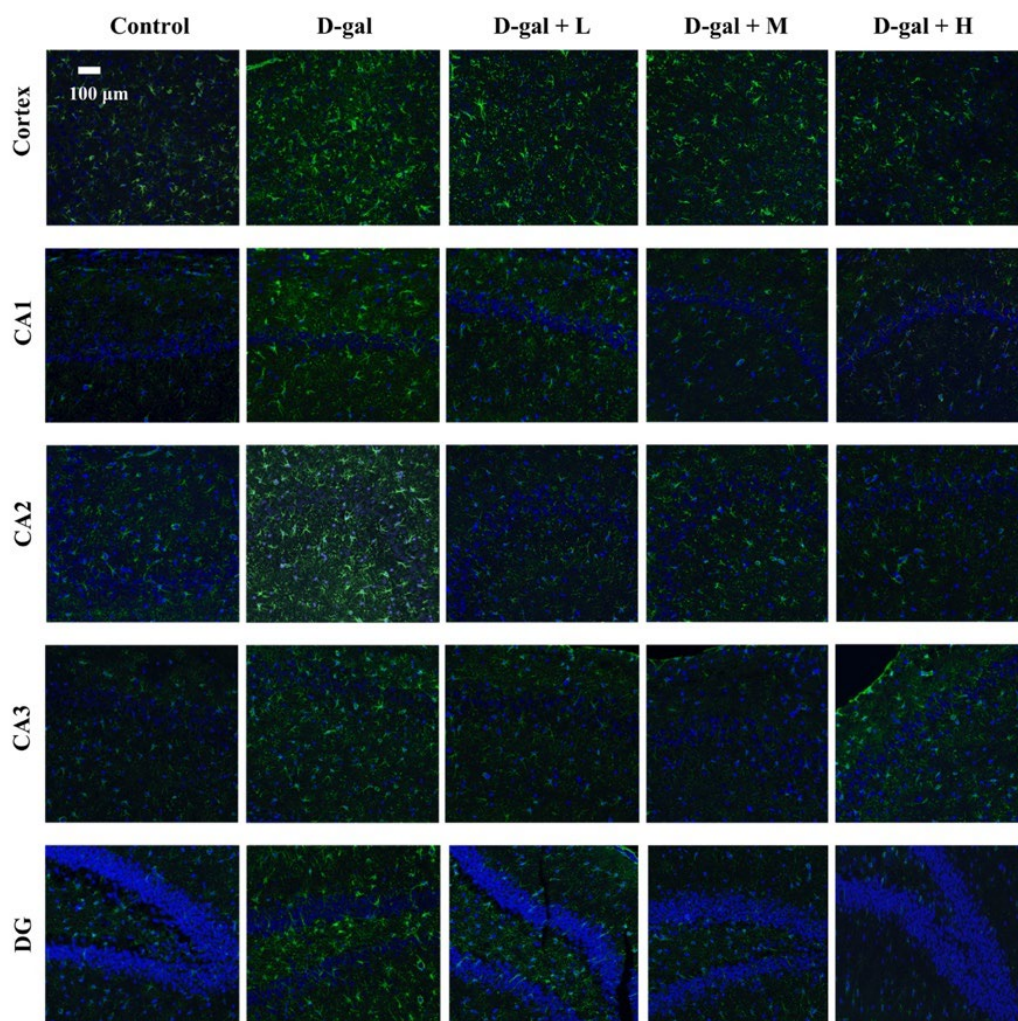


Supplementary Figure 1. The representative photomicrographs of H&E staining in the cortex, CA1-3, and DG region of the hippocampus.



Supplementary Figure 2. The representative photomicrographs of Nissl staining in the cortex, CA1-3, and DG region of the hippocampus.



Supplementary Figure 3. The representative photomicrographs of immunofluorescence staining in the cortex, CA1-3, and DG region of the hippocampus.