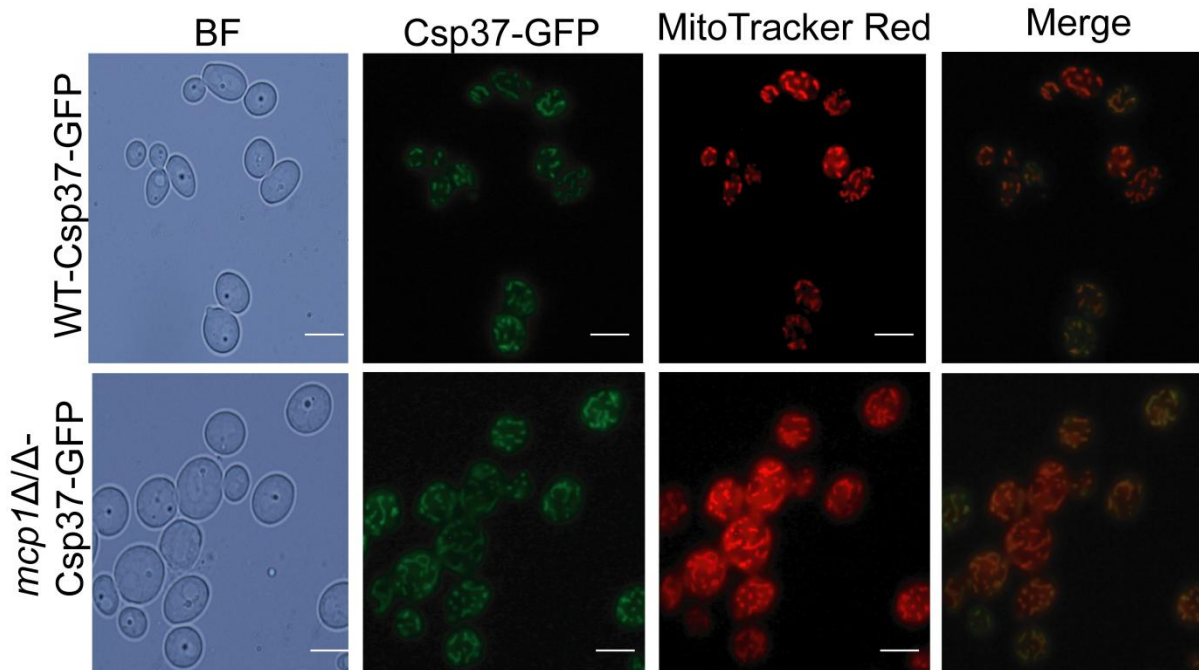
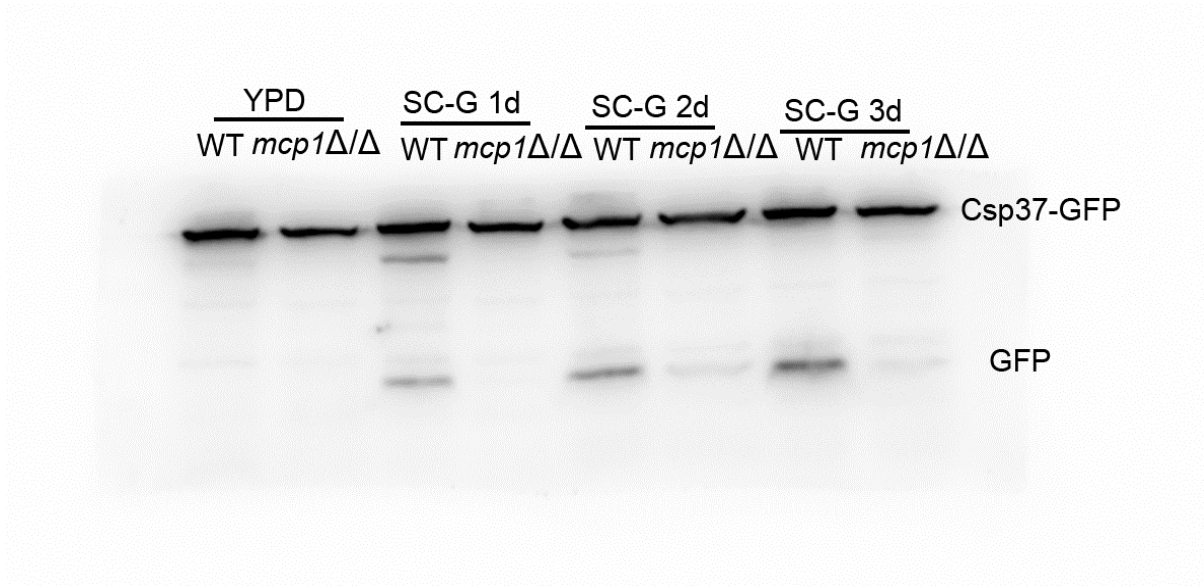


Supplementary Material

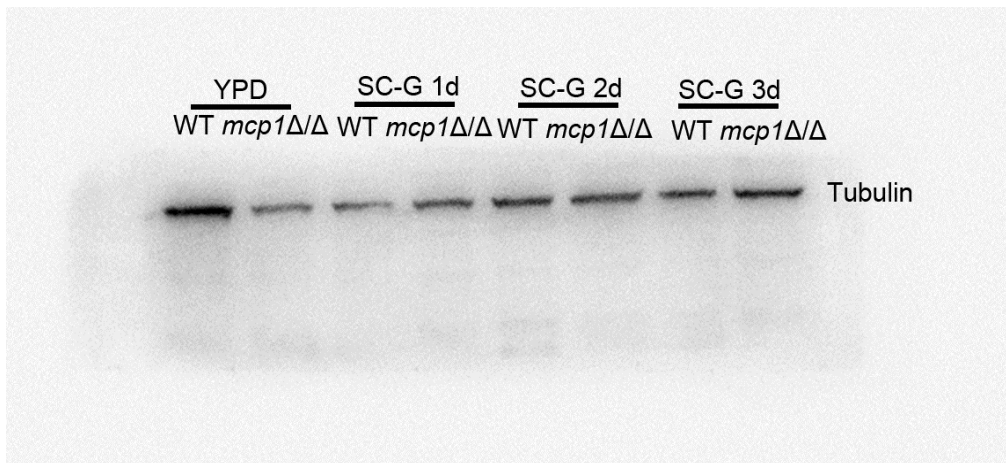
1 Supplementary Figures



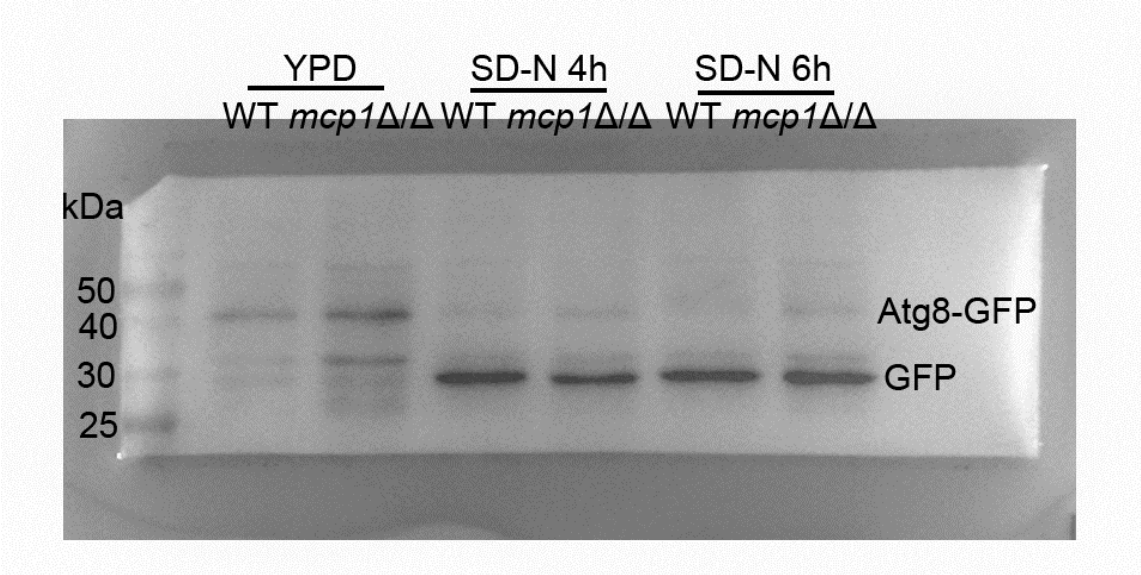
Supplementary Figure 1. Localization of Csp37 was observed in WT-*CSP37-GFP* and *mcp1Δ/Δ-CSP37-GFP*. Csp37-GFP: Csp37 localization, green fluorescence. Mito Tracker Red: Mitochondrial localization, red fluorescence. BF: Bright field.



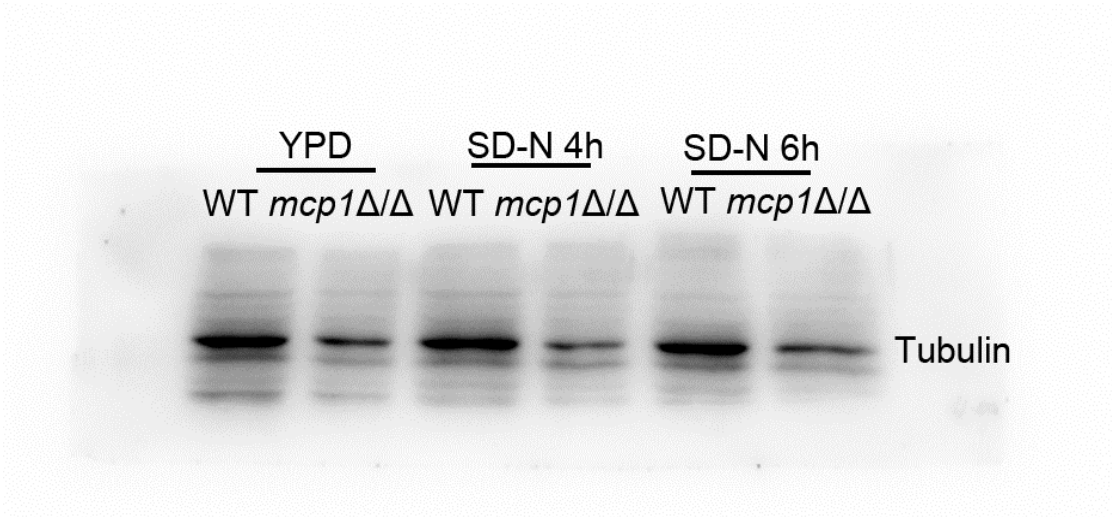
Supplementary Figure 2. A full scan of Figure 4B (Atg8-GFP) entire original gel.



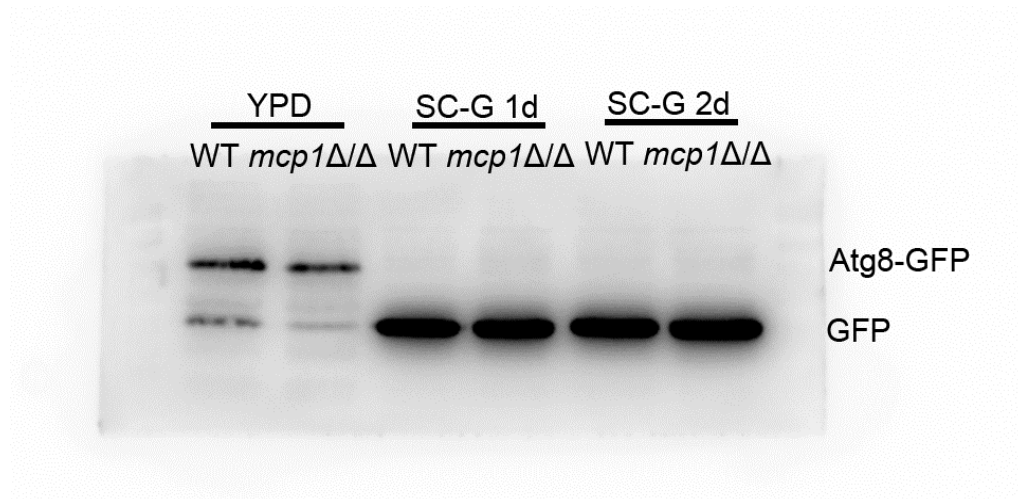
Supplementary Figure 3. A full scan of Figure 4B (Tubulin) entire original gel.



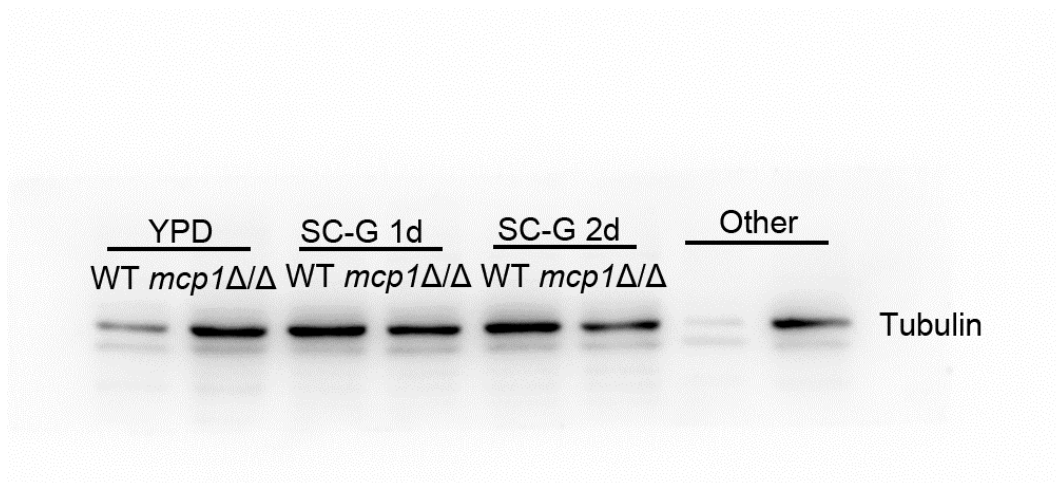
Supplementary Figure 4. A full scan of Figure 6B (Atg8-GFP) entire original gel.



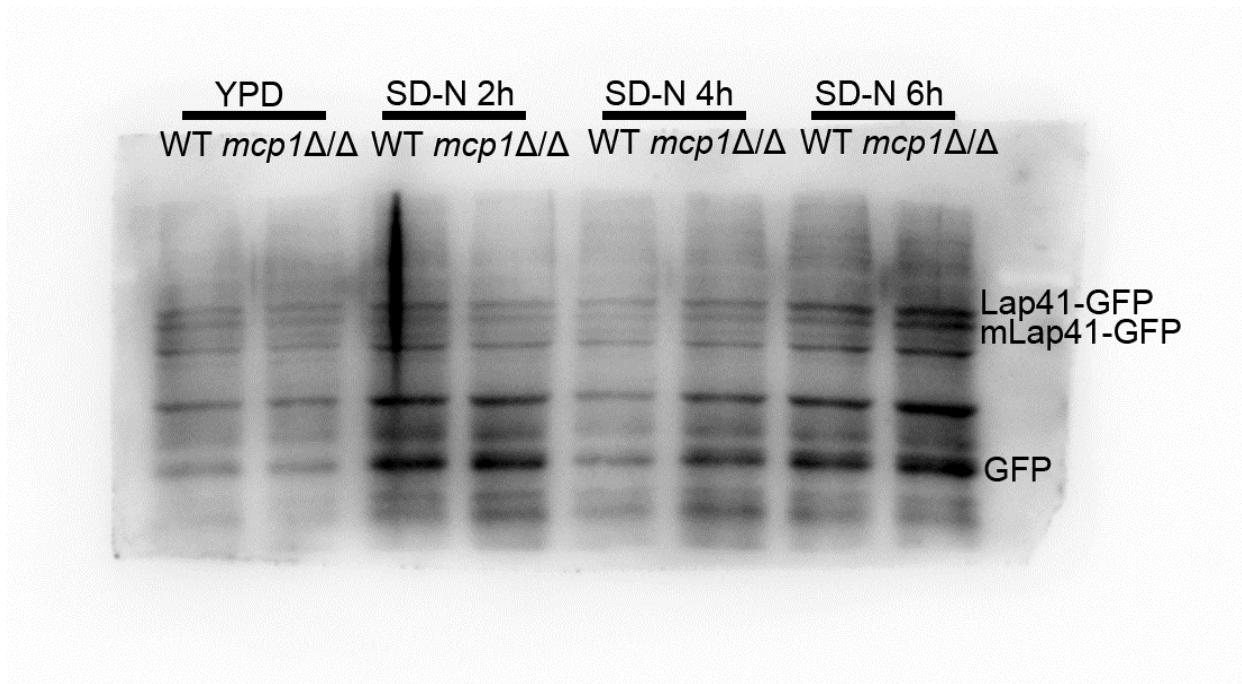
Supplementary Figure 5. A full scan of Figure 6B (Tubulin) entire original gel.



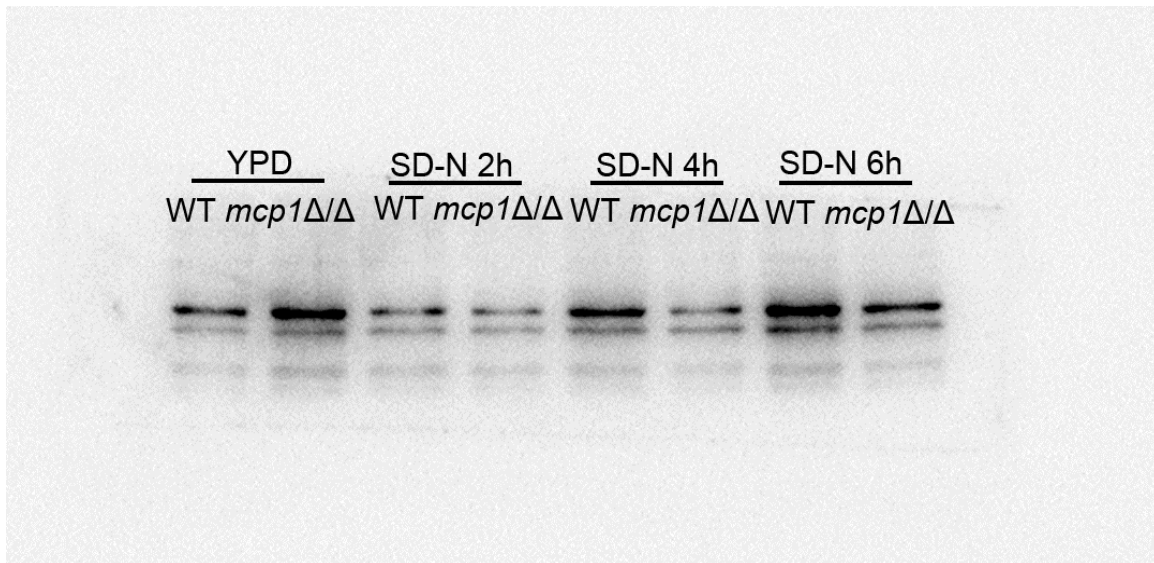
Supplementary Figure 6. A full scan of Figure 6C (Atg8-GFP) entire original gel.



Supplementary Figure 7. A full scan of Figure 6C (Tubulin) entire original gel.



Supplementary Figure 8. A full scan of Figure 6D (Lap41-GFP) entire original gel. We believe that the result of line 3-4 does not affect our conclusion.



Supplementary Figure 9. A full scan of Figure 6D (Tubulin) entire original gel.

2 Supplementary Tables

Supplementary Table 1 Strains and plasmids used in this study.

Strain/ Plasmid	Description	Source/Purpose
<i>Strains</i>		
BWP17	<i>ura3Δ::limm434/ura3Δ::limm434</i>	Wilson, et al. (1999)
BWP17 ^a	<i>his1::hisG/his1::hisG arg4::hisG/arg4::hisG URA3/ura3Δ::limm434his1::hisG/his1::hisG arg4::hisG/arg4::hisG</i>	This study
<i>mcp1Δ/Δ (+URA3)</i>	<i>ura3Δ::limm434/ura3Δ::limm434his1::hisG/his1::hisG/arg4::hisG/arg4::hisG mcp1::ARG4/mcp1::dpl200-URA3</i>	This study
<i>mcp1Δ/Δ</i>	<i>ura3Δ::limm434/ura3Δ::limm434his1::hisG/his1::hisG/arg4::hisG/arg4::hisG mcp1::ARG4/mcp1::dpl200</i>	This study
<i>mcp1Δ/Δ^a</i>	<i>URA3/ura3Δ::limm434his1::hisG/his1::hisG arg4::hisG/arg4::hisG mcp1::ARG4/mcp1::dpl200</i>	This study
<i>MCP1c</i>	<i>ura3Δ::limm434/ura3Δ::limm434his1::hisG/his1::hisG/arg4::hisG/arg4::hisG mcp1::ARG4/mcp1::dpl200, pDDB78-MCP1</i>	This study
<i>MCP1c^a</i>	<i>URA3/ura3Δ::limm434his1::hisG/his1::hisG arg4::hisG/arg4::hisG mcp1::ARG4/mcp1::dpl200, pDDB78-MCP1</i>	This study
<i>mcp1Δ/Δ-CSP37-GFP</i>	<i>ura3Δ::limm434/ura3Δ::limm434his1::hisG/his1::hisG/arg4::hisG/arg4::hisG mcp1::ARG4/ mcp1::dpl200 CSP37/CSP37-GFP::URA3</i>	This study
<i>WT-ATG8-GFP</i>	<i>ura3Δ::limm434/ura3Δ::limm434his1::hisG/his1::hisG/arg4::hisG/arg4::hisG ATG8/ATG8-GFP::URA3</i>	This study
<i>mcp1Δ/Δ-ATG8-GFP</i>	<i>ura3Δ::limm434/ura3Δ::limm434his1::hisG/his1::hisG/arg4::hisG/arg4::hisG mcp1::ARG4/ mcp1::dpl200 ATG8/ATG8-GFP::URA3</i>	This study
<i>WT-LAP41-GFP</i>	<i>ura3Δ::limm434/ura3Δ::limm434his1::hisG/his1::hisG/arg4::hisG/arg4::hisG LAP41/LAP41-GFP::URA3</i>	This study
<i>mcp1Δ/Δ-LAP41-GFP</i>	<i>ura3Δ::limm434/ura3Δ::limm434his1::hisG/his1::hisG/arg4::hisG/arg4::hisG mcp1::ARG4/ mcp1::dpl200 LAP41/LAP41-GFP::URA3</i>	This study
<i>WT-CSP37-GFP</i>	<i>ura3Δ::limm434/ura3Δ::limm434his1::hisG/his1::hisG/arg4::hisG/arg4::hisG</i>	This study

<i>mcp1Δ/Δ-CSP37-GFP</i>	<i>CSP37/CSP37-GFP::URA3</i> <i>ura3Δ::limm434/ura3Δ::limm434</i> <i>his1::hisG/his1::hisG arg4::hisG/arg4::hisG</i> <i>mcp1::ARG4/ mcp1::dpl200 CSP37/CSP37-GFP::URA3</i>	This study
pRS-ArgΔ <i>SpeI</i>	Amp ^r <i>ARG4</i>	Wilson, et al. (1999)
pLUBP	Amp ^r <i>IRO1-URA3</i>	Gerald Fink (2003)
pDDB78- <i>MCPI</i>	Amp ^r <i>MCPI TRP1 HIS1</i>	This study
pAu34M-GFP	Amp ^r <i>P_{ACT1}-GFP URA3</i>	Yu et al. (2014)
pAu34M- <i>MCPI-GFP</i>	Amp ^r <i>P_{ACT1}-MCPI-GFP URA3</i>	This study

^a Strain that the *URA3* gene was reintroduced at its common locus.

Supplementary Table 2 Primers used in this study.

Primer	Sequence (5'→3')	Function
<i>MCPI</i> -5DR	TGTGTTGTCCTGATTTATCTCTTGGTT TTTGGGTTTTTTTTTTTTTCGGTTGTTC GTGGGTTTCCCAGTCACGACGTT	Gene knockout
<i>MCPI</i> -3DR	TGCACTCAGGTA CTACTACCTCTATCAATA TTGGCAACCACCTTTCTCTTTATTTTA CCCACTGGAATTGTGAGCGGATA	Gene knockout
<i>MCPI</i> -5det	GCTGTTGTTGTTGAAATTGG	Genetic validation
<i>MCPI</i> -3det	ATACTAGACCCGATGTGACT	Genetic validation
<i>MCPI</i> -5com	ATAAGAATGCGGCCGCCCAACCTAAT CCATAGCCAT	Complement gene
<i>MCPI</i> -3com	GGGGTACCAGTGTGGTCGTTGTTGTT AC	Complement gene
<i>MCPI</i> -5GFP	CCGCTCGAGATGTCACAAGAAGATT GCTAAC	Transcriptional fusion
<i>MCPI</i> -3GFP	TCCCCCGGGCAACCAGAACGACCTTA AGTA	Transcriptional fusion
<i>COX2</i> -5RT	TAGATGTACCTACACCTTGA	RT-PCR
<i>COX2</i> -3RT	CCTATAGAGTCAACAAAATC	RT-PCR
<i>NAD2</i> -5RT	ACATACATAGTTTATATCGC	RT-PCR

<i>NAD2</i> -3RT	GAGAGTAAGATTGTAATTCA	RT-PCR
<i>NAD5</i> -5RT	TACTTGAATTAGTCTAGGTG	RT-PCR
<i>NAD5</i> -3RT	CTACAAACTCTCAACCAATG	RT-PCR
<i>ATP6</i> -5RT	TTCACCTTTAGATCAATTCG	RT-PCR
<i>ATP6</i> -3RT	AAACTAAATGATACAATAGC	RT-PCR
<i>URA3</i> -5inner	CGCGGGATTTGGATGGTAT	URA test
<i>URA3</i> -3inner	TCTTGGCTCTTGGTTGGTG	URA test
<i>ACT1</i> -5RT	GGTAGACCAAGACATCAAGG	RT-PCR
<i>ACT1</i> -3RT	CCGTGTTCAATTGGGTATCT	RT-PCR
<i>LAP41-GFP-1</i>	AATTCTTCTATGGTTTCTTCAAGAATT GGAGAGATGTCTATGATAATTTTGT GATTTAGGTGGTGGTTCTAAAGGTGA AGAATTATT	<i>GFP</i> localization for <i>LAP41</i>
<i>LAP41-GFP-2</i>	ACTAACAAATAACTAATACTTGCAAA TCAACTTTTAATGATTCCTTTTCCTGT TGTTCAATGTTTCGACTAGAAGGACCA CCTTTGATTG	<i>GFP</i> localization for <i>LAP41</i>
<i>CSP37-GFP-1</i>	TTGGTGATGACGTCTACAATGATTTTG CTAAAAGATTTGACGATTTGTTTAACC GTAAAGGTGGTGGTTCTAAAGGTGAA GAATTATT	<i>GFP</i> localization for <i>CSP37</i>
<i>CSP37-GFP-2</i>	AATATAAGAATATTACGTCTCTTTTCT TTTCTTTTCTGTTTATGCTAACATCAT TTTTAAAAAACCTAGAAGGACCACC TTTGATTG	<i>GFP</i> localization for <i>CSP37</i>
<i>VAM2</i> -5RT	AAGAAGAGGAAGAGCCACC	RT-PCR
<i>VAM2</i> -3RT	AAACTGATAGCACGGACGC	RT-PCR
<i>VAM3</i> -5RT	CACAAGTTGACCAAGACC	RT-PCR
<i>VAM3</i> -3RT	CTCGTTAGATGCCTGTTG	RT-PCR
<i>VPH1</i> -5RT	AGTGATGAGGAGGAGCAGGA	RT-PCR
<i>VPH1</i> -3RT	TGCCAAGGAAAGAGCCCAT	RT-PCR
<i>VPH2</i> -5RT	GCCAGGAACAAGAATACAG	RT-PCR
<i>VPH2</i> -3RT	ACAACCACTTCAGCAACC	RT-PCR
<i>CPY2</i> -5RT	AACCAATGGGCTGTGGTGAA	RT-PCR
<i>CPY2</i> -3RT	TGCTCGGCACAATCCTTTCT	RT-PCR
<i>CPY3</i> -5RT	TGGCTTAATGGTGGTCCTGG	RT-PCR
<i>CPY3</i> -3RT	AGTCCTGTGAAGCTTGGTCG	RT-PCR