

## Supplementary Material

### Materials and methods:

Figure. S1

### InLiver-OC

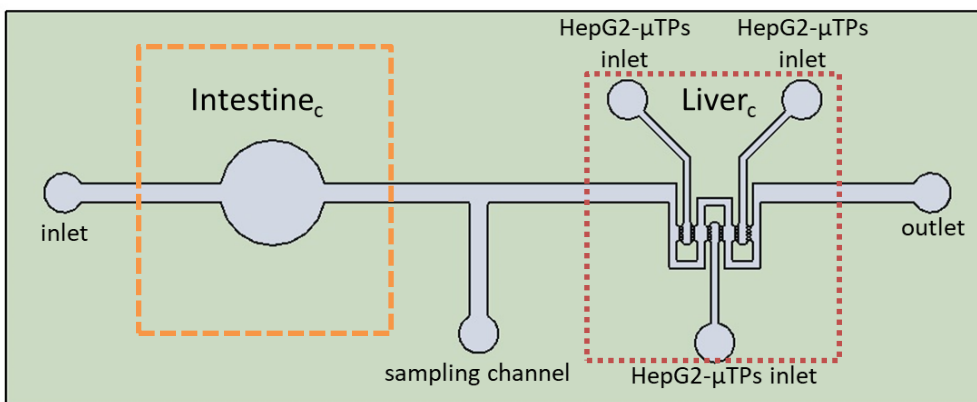
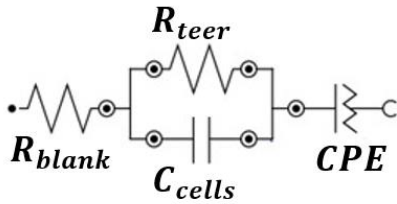


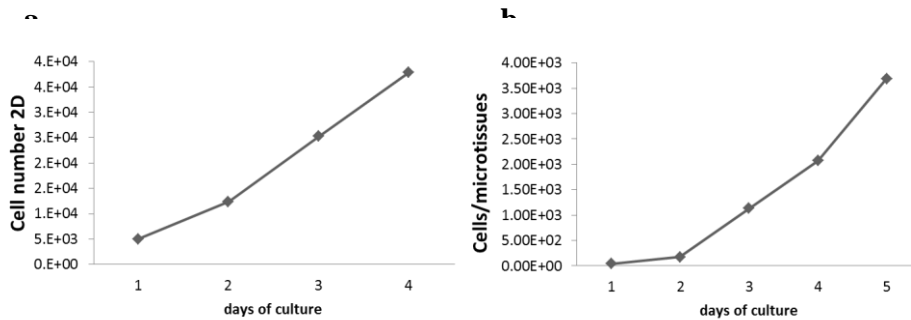
Figure. S1 Schematic representation of the InLiver-OC

Top view of the InLiver biochip with Intestine compartment (Intestine<sub>c</sub>, orange dotted line) and Liver compartment (Liver<sub>c</sub>, red dotted line); culture medium inlet was indicated as inlet; the HepG2-μTPs inlet showed the HepG2-μTPs loading points; sampling channel and outlet were showed as the collection site between the Intestine<sub>c</sub> and Liver<sub>c</sub> and downstream to the outlet Liver<sub>c</sub>, respectively.

**Figure. S2 Circuit for TEER measurement**

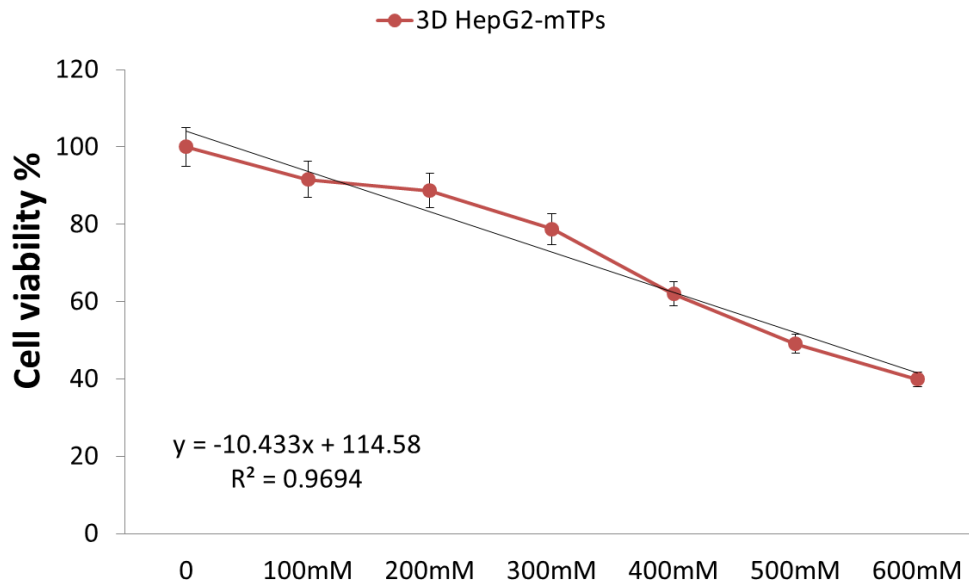
**Figure. S2** Simplified equivalent circuit used to fit and analyze the impedance spectrum of cellular systems.  $R_{teer}$  includes resistive contribution of both the cell membrane ( $R_{cells}$ ) and tight junction ( $R_{tight}$ ). However, since these equivalent elements are in parallel, and since  $R_{cells} \gg R_{tight}$ ,  $R_{teer} = R_{tight} // R_{cells} \approx R_{tight}$ .

## Results

**Figure. S3 Growth curve**

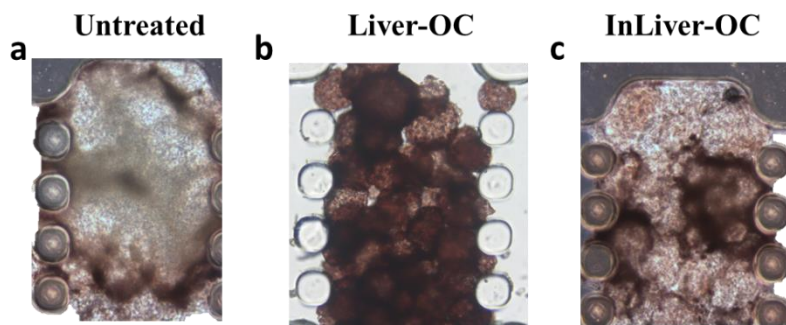
**Figure. S3** The graphs indicated the cell number growth during the culture time in 2D (a) and 3D configurations (b).

**Figure. S4 Regression line of Et-OH Dose-response**

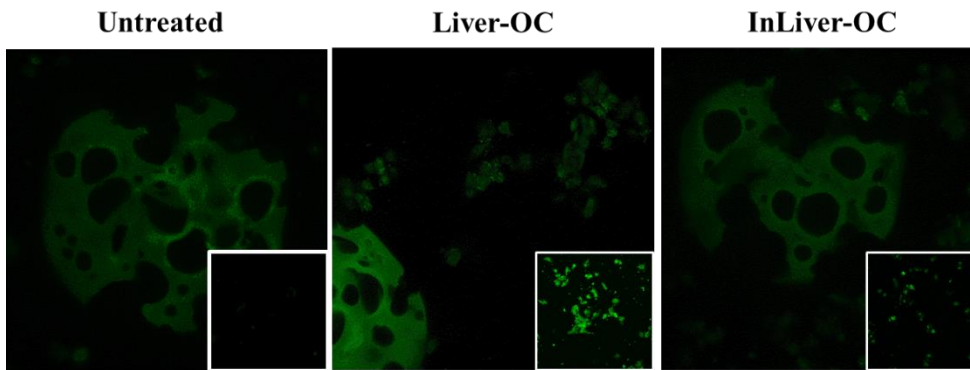


**Figure. S4** The graph indicates the linear regression line of the Et-OH dose-response curve

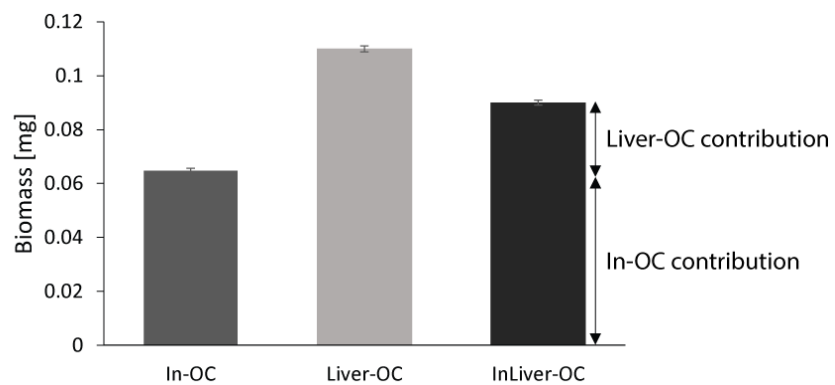
**Figure. S5 Oil red staining on chip**



**Figure. S5** Oil red staining was performed directly into the microfluidic device in order to evaluate the lipid accumulation in different configurations: untreated (a), Liver-OC (b), InLiver-OC (c).

**Figure. S6 ROS expression**

**Figure. S6** Representative immunofluorescence images and high magnification insets of the HepG2- $\mu$ TPs highlight a high production of ROS stained in green in Liver-OC (b) compared to InLiver-OC (c). Untreated samples revealed no signal for ROS (a). Scale bar 75  $\mu$ m.

**Figure. S7 Biomass quantification**

**Figure. S7** The graph indicated the biomass quantification of In-OC, Liver-OC and InLiver-OC supernatants after Et-OH treatment.