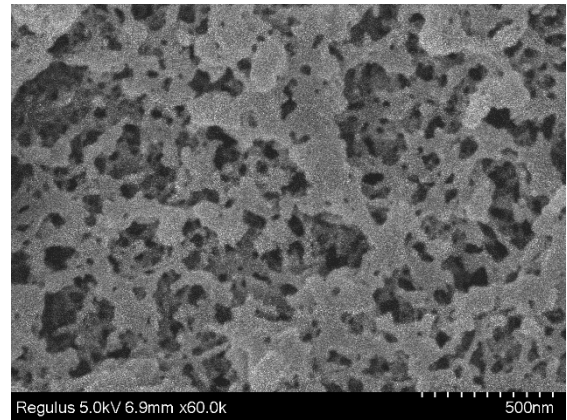
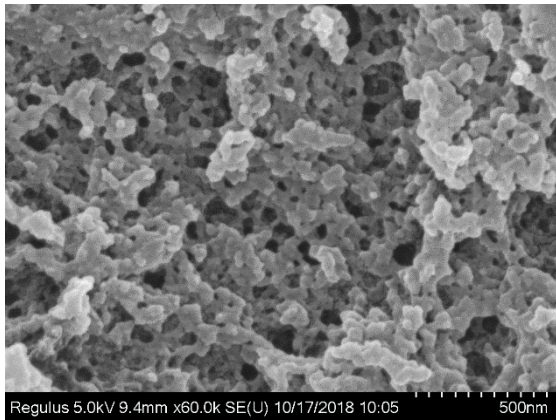
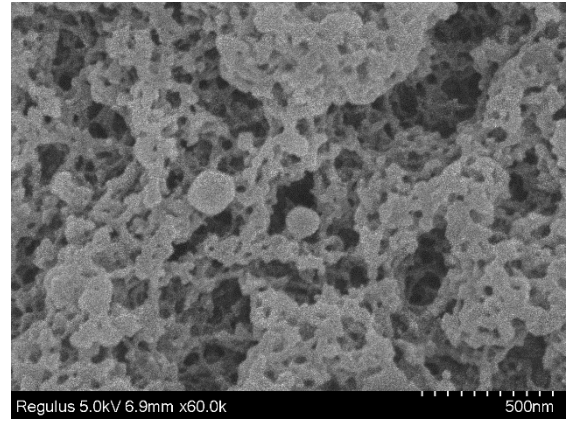
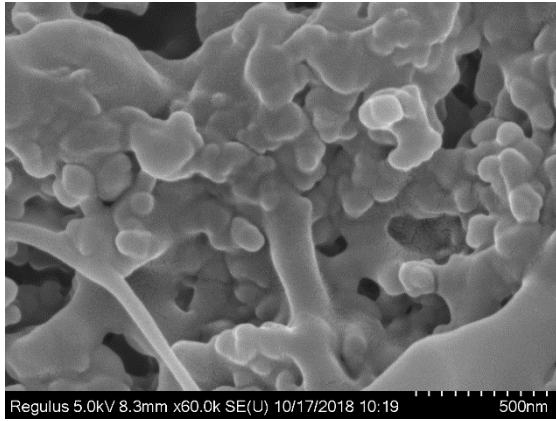
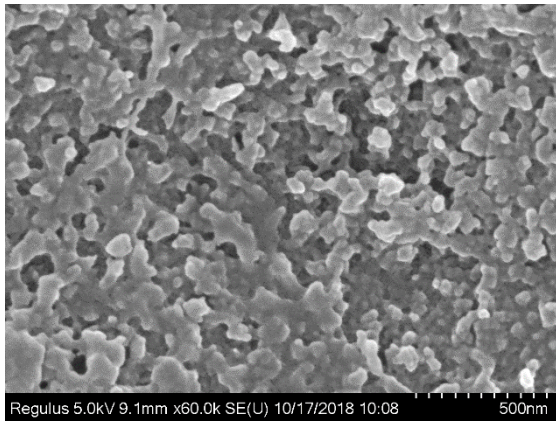


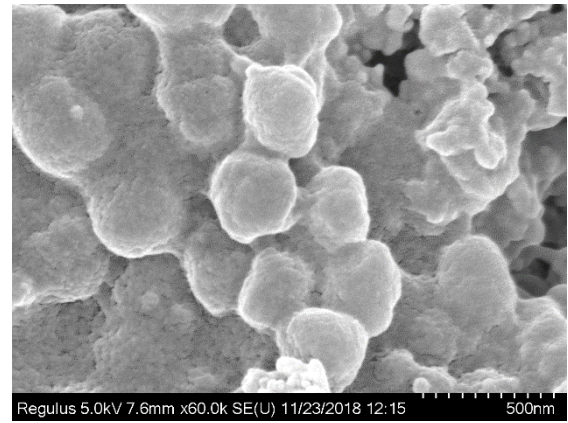
## *Supplementary Material*



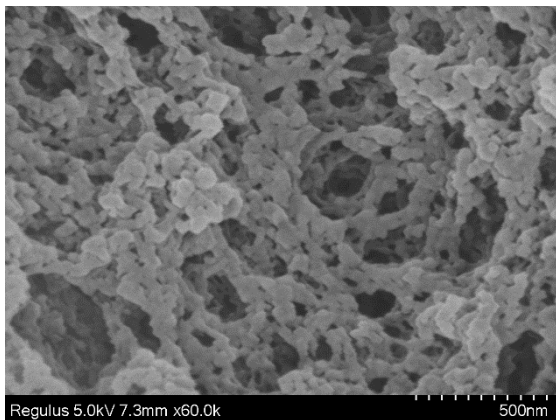
**Supplementary Figure 1.** Variations of particle size and morphologies of spheres prepared using four rotational speeds: (a) 200, (b) 350, (c) 500, and (d) 650 rpm.



(a)

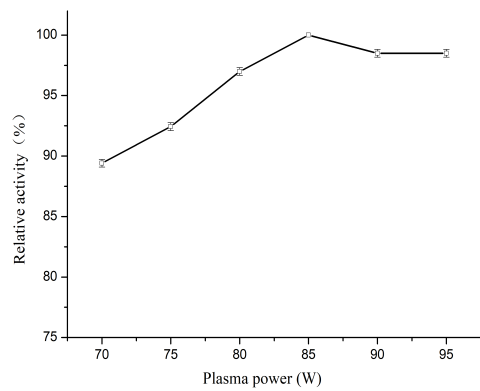


(b)

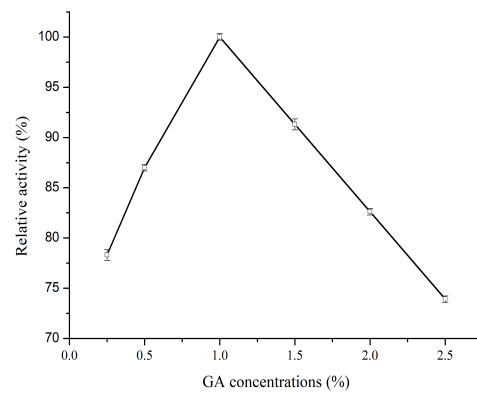


(c)

**Supplementary Figure 2.** Three porogen formulas: (a) single liquid (toluene only), (b) mixed liquid (toluene/heptane), and (c) solid-liquid porogen (toluene/nano-calcium carbonate [CaCO<sub>3</sub>]).



(a)



(b)

**Supplementary Figure 3.** Effect of (a) Plasma power and (b) Glutaraldehyde concentration on relative activity of co-immobilized enzymes.