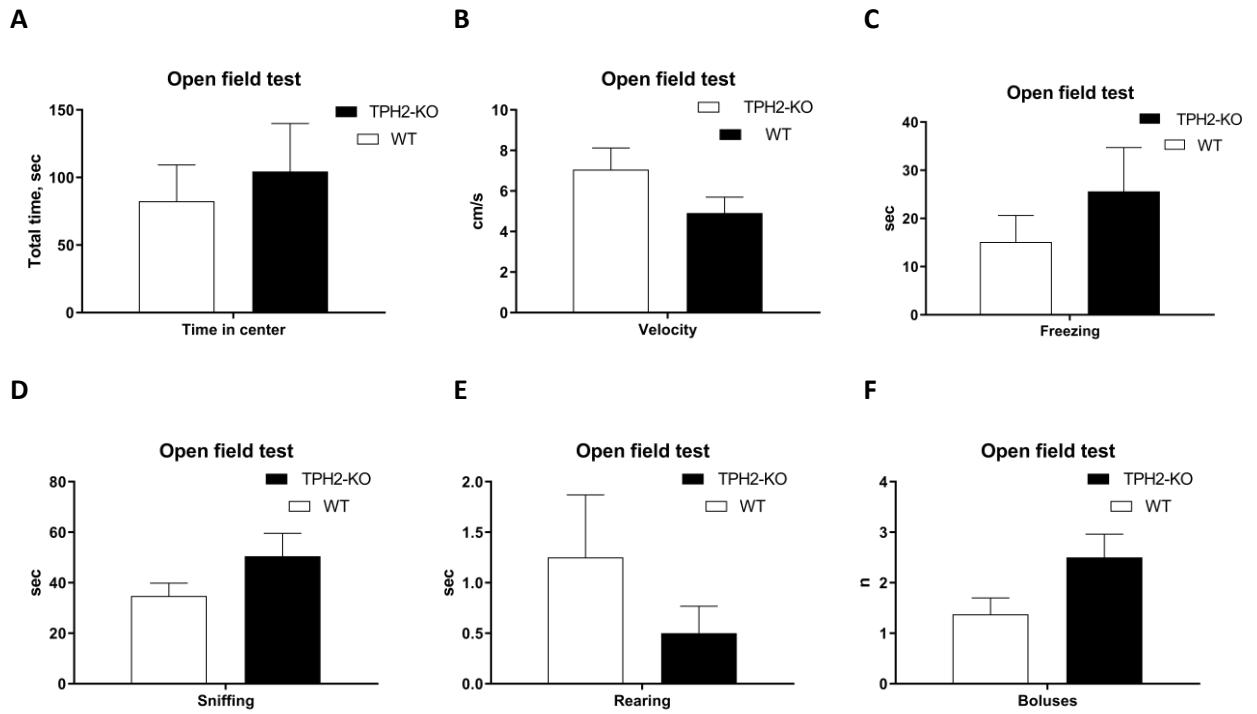
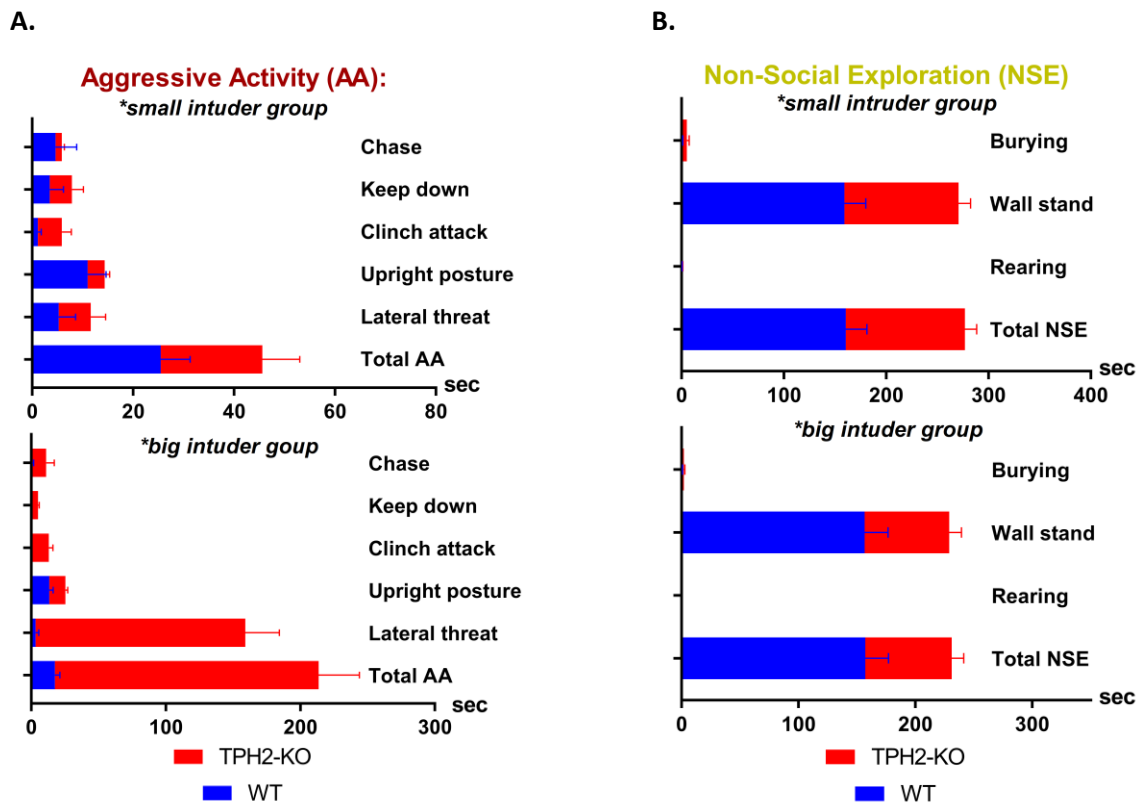


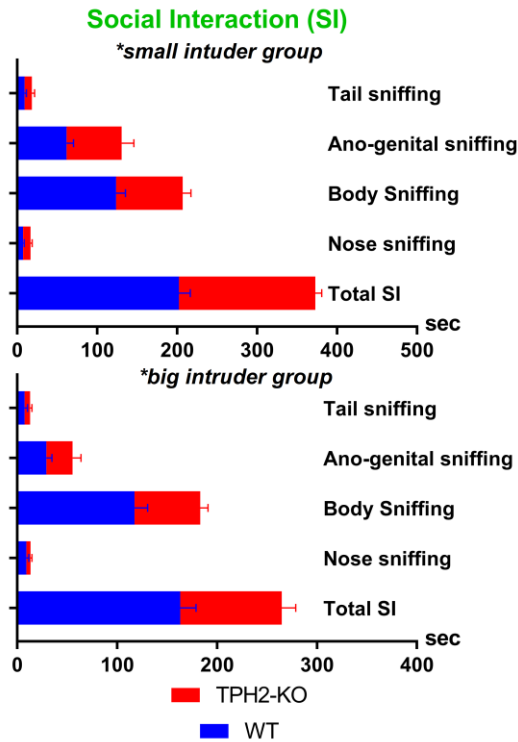
**Supplementary Figure 1. Full results for open field test.**



**Supplementary Figure 2. Full visualization of extended resident-intruder test with different types of intruders.**



C.



D.

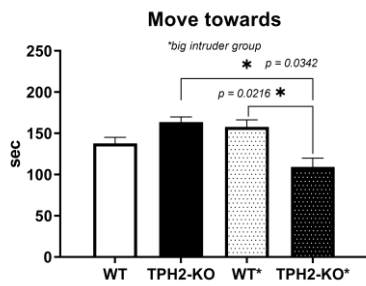
Endpoint	P value*			
	Small: WT vs. Big: TPH2-KO	Small: TPH2-KO vs. Big: WT	Small: TPH2-KO vs. Big: TPH2-KO	Big: WT vs. Big: TPH2-KO
<b>Aggressive activity</b>	<b>***P = 0.0002</b>	<b>NS</b>	<b>***P = 0.0002</b>	<b>***P = 0.0002</b>
Lateral threat, s	**P = 0.0036	NS	**P = 0.0023	**P = 0.0023
Upright posture, s	NS	*P = 0.0285	*P = 0.0122	NS
Clinch attack, s	**P = 0.0056	NS	*P = 0.0355	**P = 0.0034
Keep down, s	NS	NS	NS	***P = 0.0008
Chase, s	NS	NS	NS	NS
<b>Non-Social Exploration</b>	<b>**P = 0.0027</b>	<b>NS</b>	<b>NS</b>	<b>**P = 0.0031</b>
Rearing, s	NS	NS	NS	NS
Wall stand, s	*P = 0.0495	NS	NS	NS
Burying, s	NS	NS	NS	NS
<b>Social Interaction</b>	<b>**P = 0.0039</b>	<b>NS</b>	<b>*P = 0.0379</b>	<b>NS</b>
Nose sniffing, s	NS	NS	NS	NS
Body sniffing, s	**P = 0.0013	NS	NS	NS
Ano-genital sniffing, s	NS	NS	NS	NS
Tail sniffing, s	NS	NS	NS	NS

\*Small: WT vs. Small: TPH2-KO and Small: WT vs. Big: WT – all endpoints NS

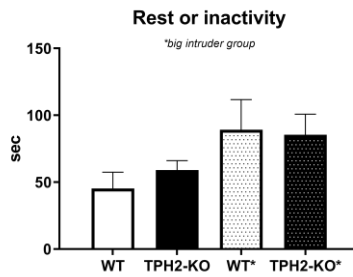
E.

WT (Resident)	Weight (g)	TPH2-KO (Resident)	Weight (g)	Small (Intruder)	Weight (g)	Big (Intruder)	Weight (g)
2688 (I-A)	297	2695 (IV-A)	305	I	154	A	465
2711 (IV-A)	312	2694 (III-C)	331	II	163	B	425
2699 (I-A)	302	2690 (II-B)	338	III	150	C	433
2681 (II-B)	347	2704 (II-B)	285	IV	150	D	380
2689 (II-B)	305	2705 (I-C)	308				
2698 (II-B)	337	2706 (I-A)	330				
2710 (IV-A)	279	2707 (III-C)	320				
2712 (IV-C)	316	2685 (I-A)	321				

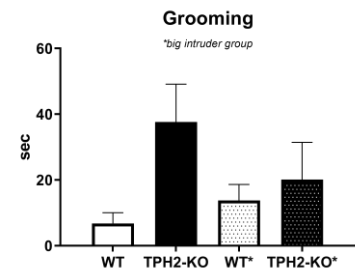
F



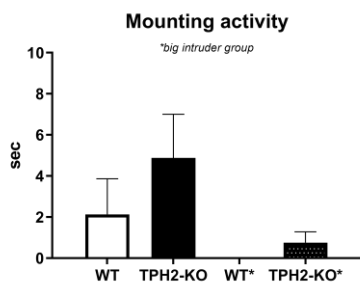
G



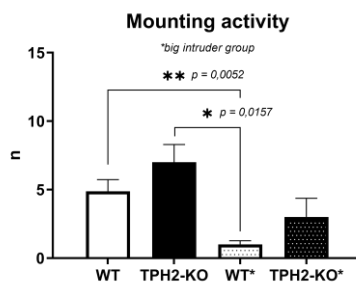
H



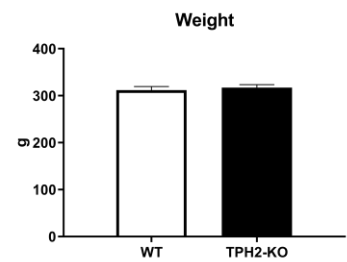
I



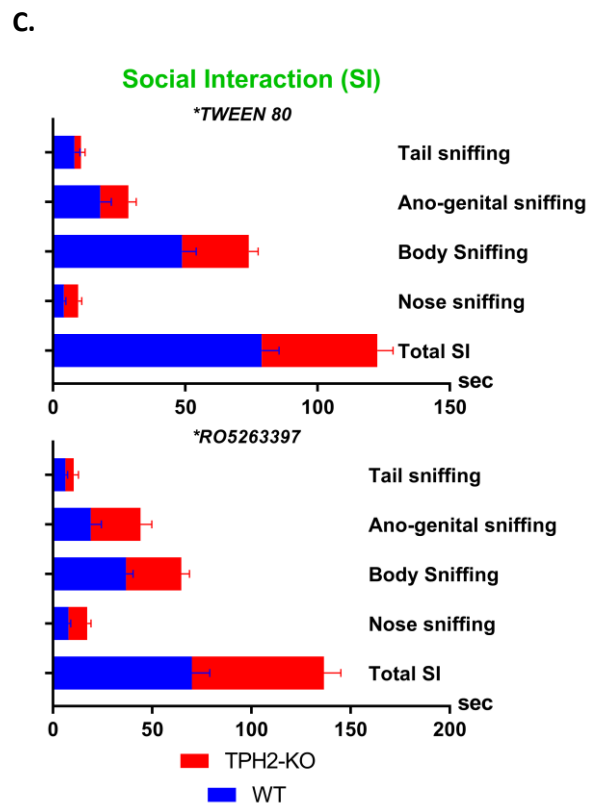
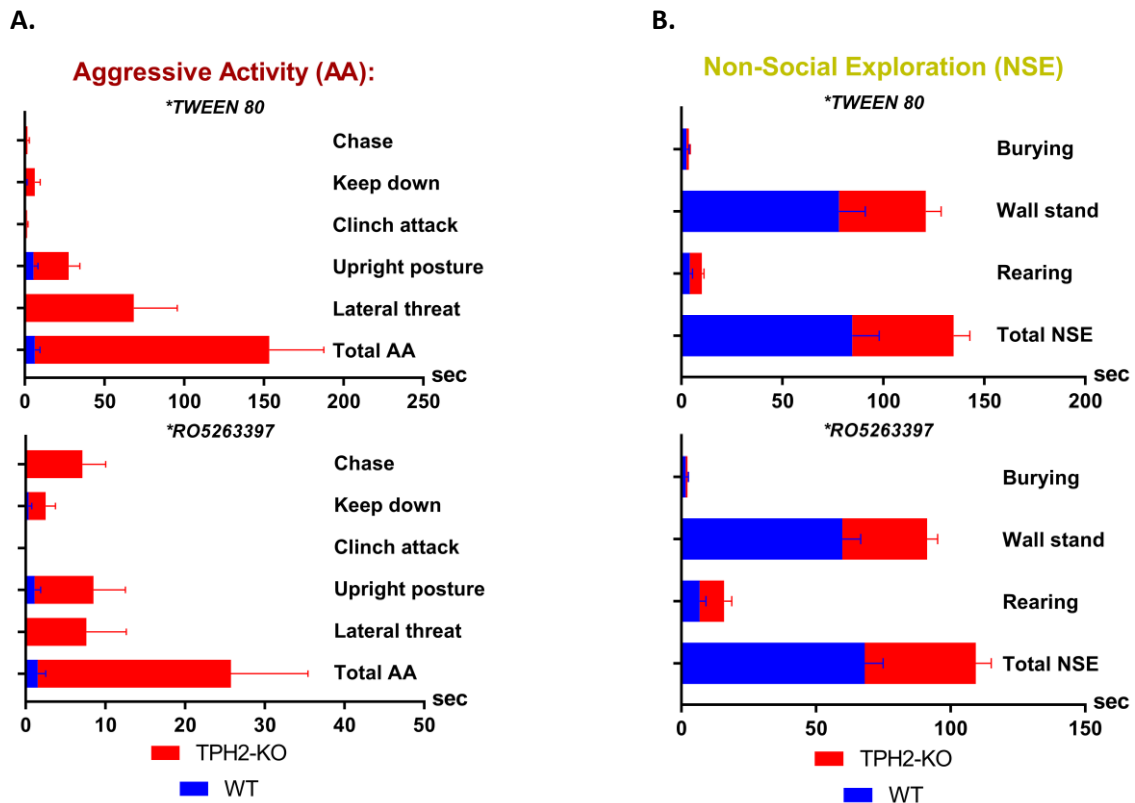
J



K



Supplementary Figure 3. Full visualization of resident-intruder test with RO5263397 administration.

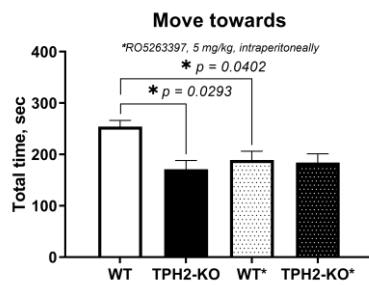


D.

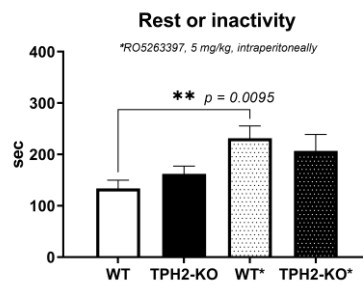
Endpoint	P value*	TWEEN: WT vs. TWEEN: TPH2-KO	TWEEN: WT vs. RO: TPH2-KO	TWEEN: TPH2-KO vs. RO: WT	TWEEN: TPH2-KO vs. RO: TPH2-KO
	<b>Aggressive activity</b>		<b>**P = 0.0087</b>	<b>NS</b>	<b>**P = 0.0073</b>
Lateral threat, s		*P = 0.0228	NS	*P = 0.0228	*P = 0.0361
Upright posture, s		NS	NS	*P = 0.0203	NS
Clinch attack, s		**P = 0.0048	NS	**P = 0.0048	**P = 0.0048
Keep down, s		NS	NS	NS	NS
Chase, s		NS	NS	NS	NS
<b>Non-Social Exploration</b>		<b>NS</b>	<b>NS</b>	<b>NS</b>	<b>NS</b>
Rearing, s		NS	NS	NS	NS
Wall stand, s		NS	NS	NS	NS
Burying, s		NS	NS	NS	NS
<b>Social Interaction</b>		<b>**P = 0.0058</b>	<b>NS</b>	<b>*P = 0.0260</b>	<b>*P = 0.0484</b>
Nose sniffing, s		NS	NS	NS	NS
Body sniffing, s		*P = 0.0390	**P = 0.0064	NS	NS
Ano-genital sniffing, s		NS	NS	NS	NS
Tail sniffing, s		NS	NS	NS	NS

\*Tween: WT vs. RO: WT and RO: WT vs. RO: TPH2-KO – all endpoints NS

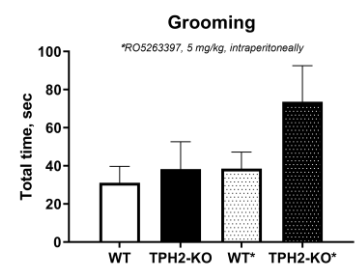
E



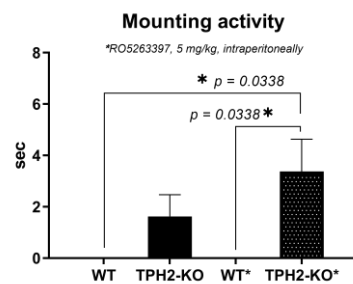
F



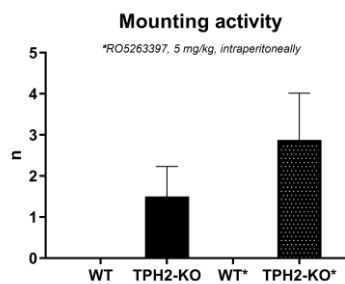
G



H



I



J

