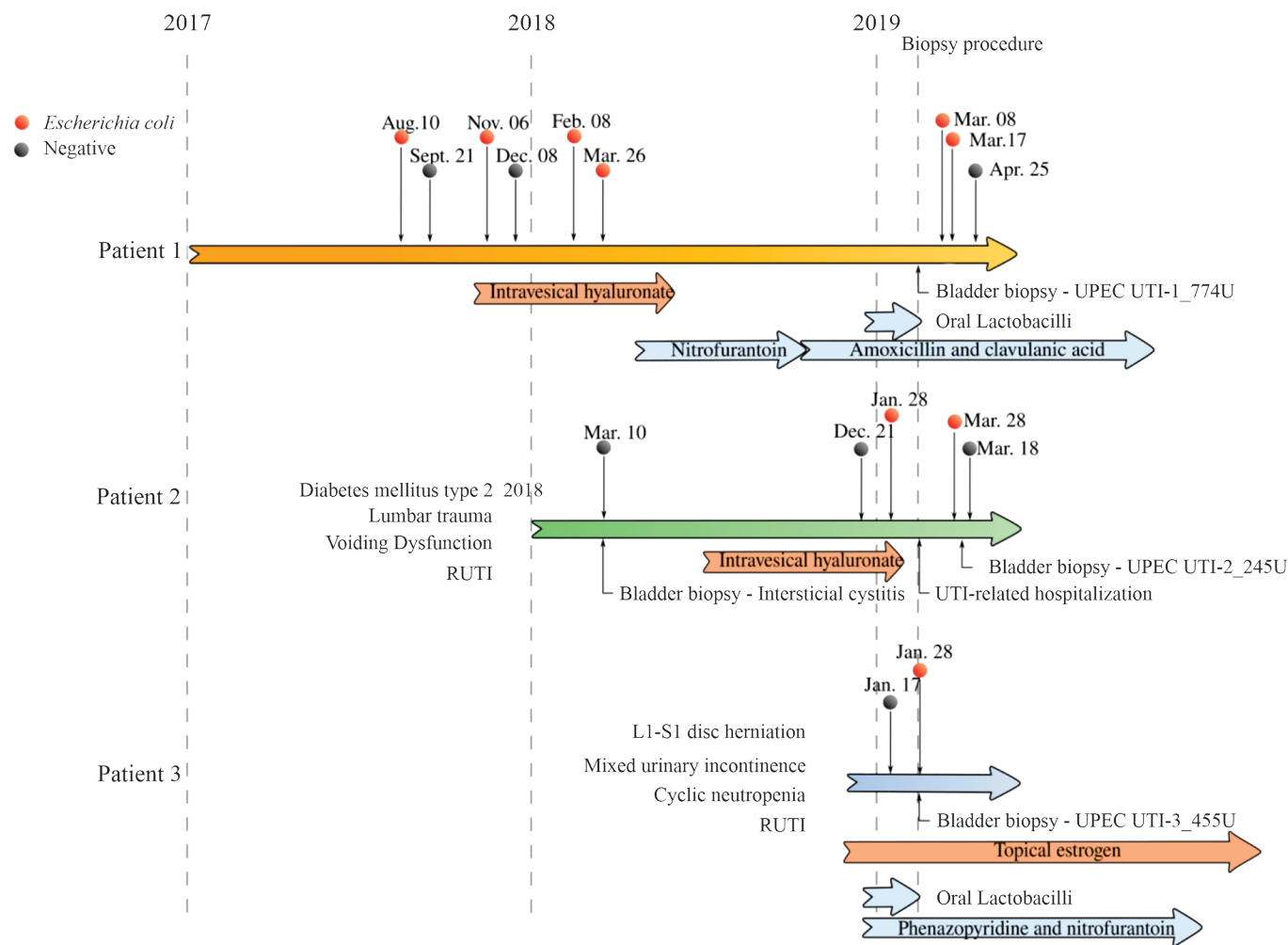
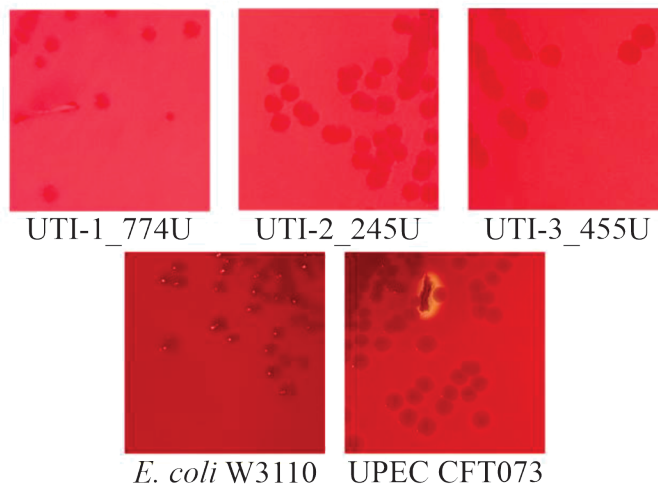


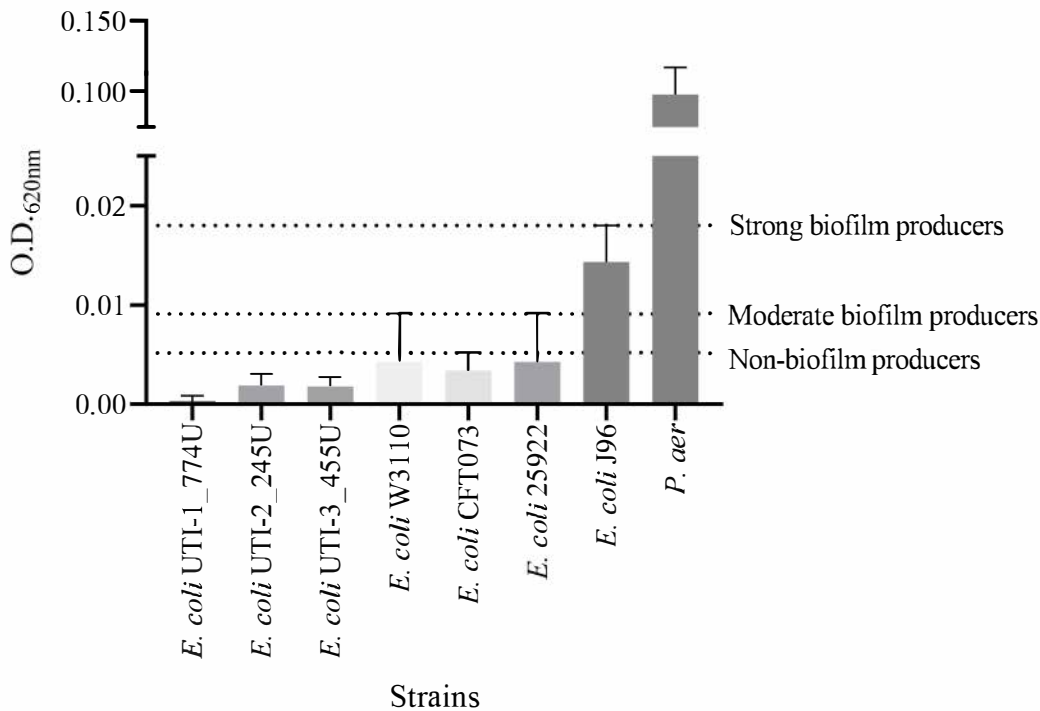
Timeline of evolution of RUTIs in patients



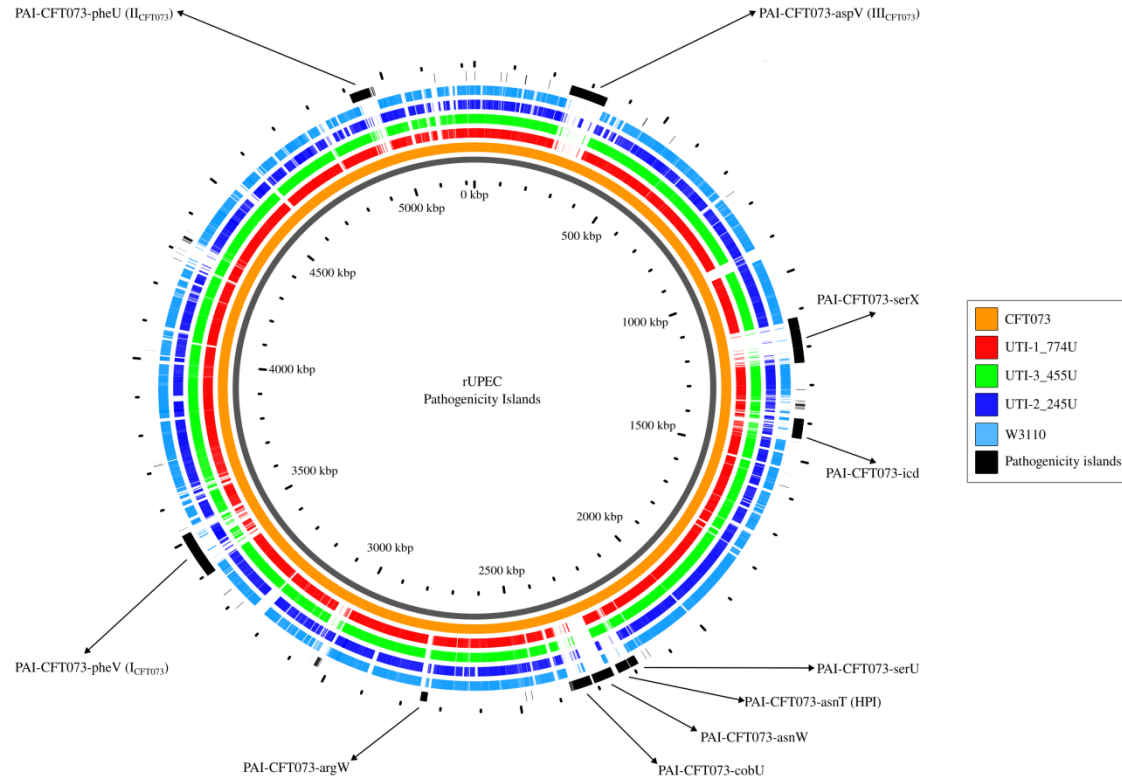
Hemolytic activity of RUTI-associated UPEC strains



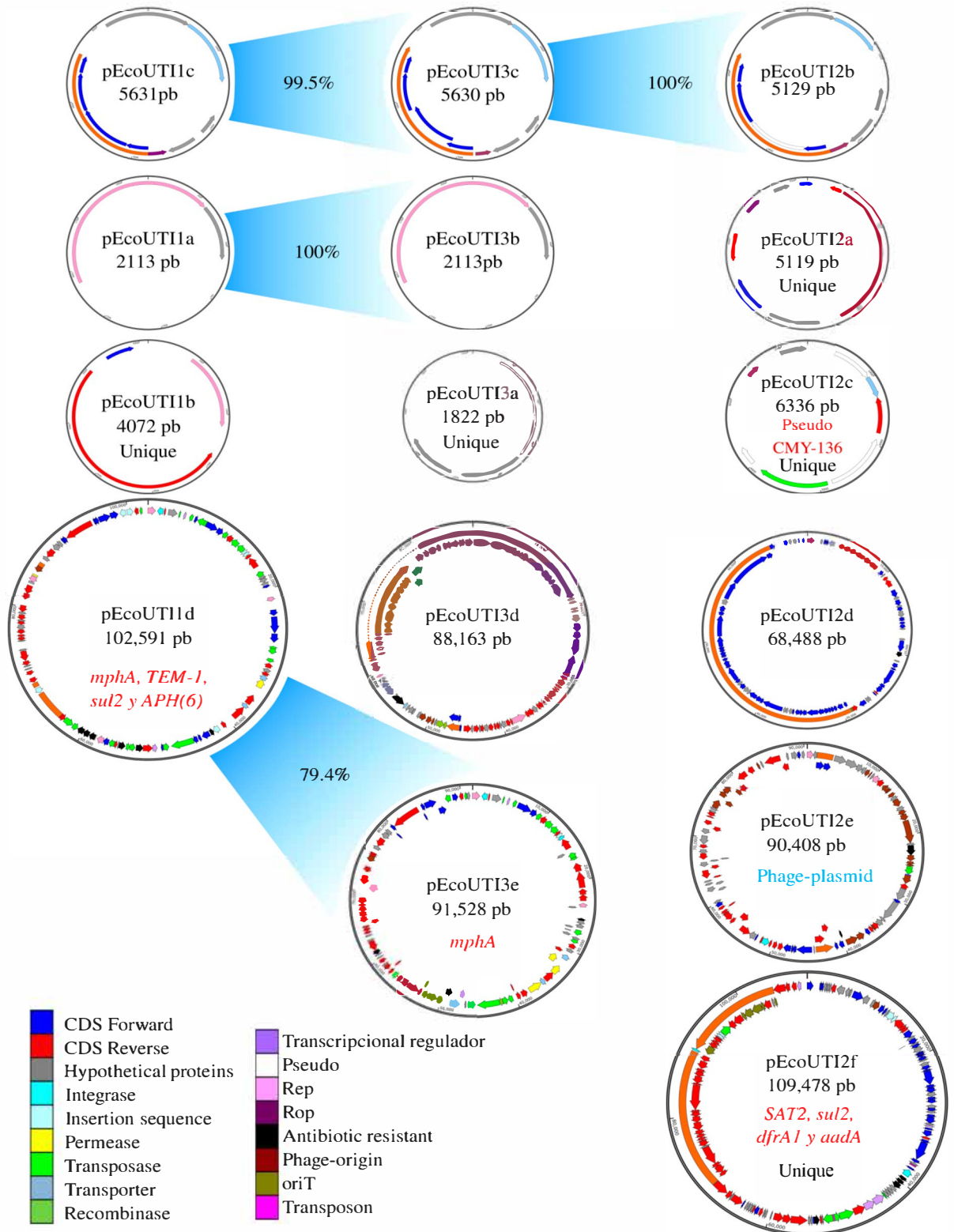
Biofilm Production



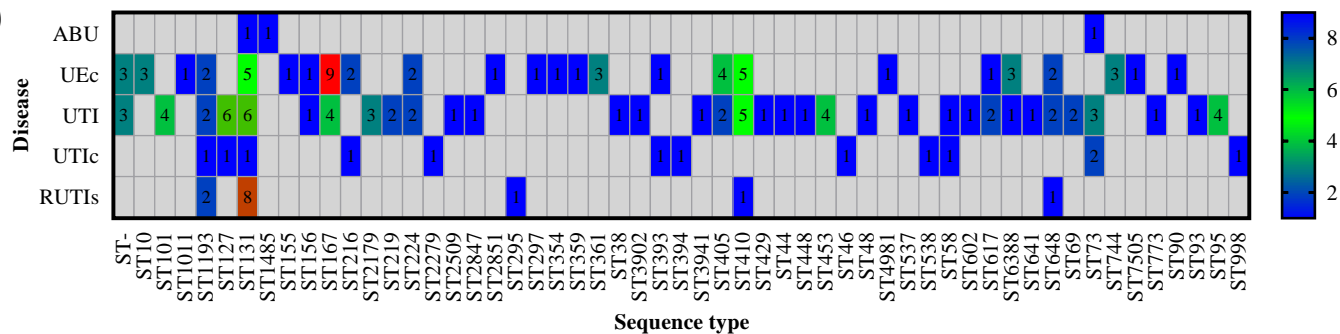
CFT073 Pathogenicity Islands Loss in RUTIs



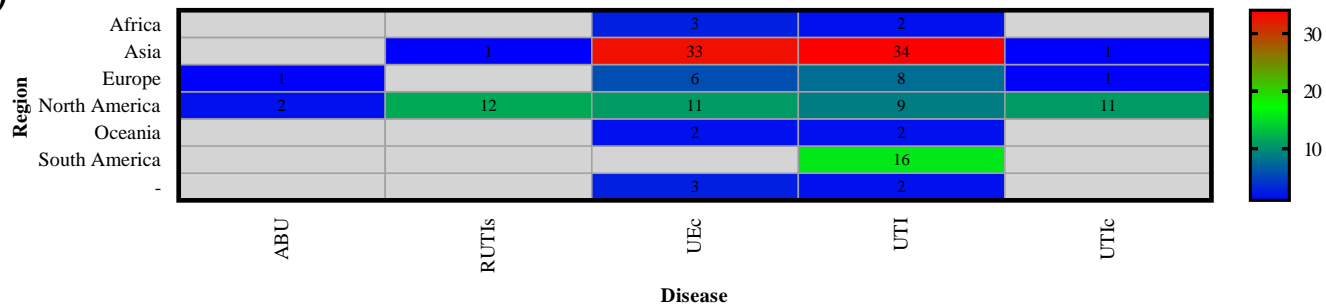
Plasmids in RUTIs strains



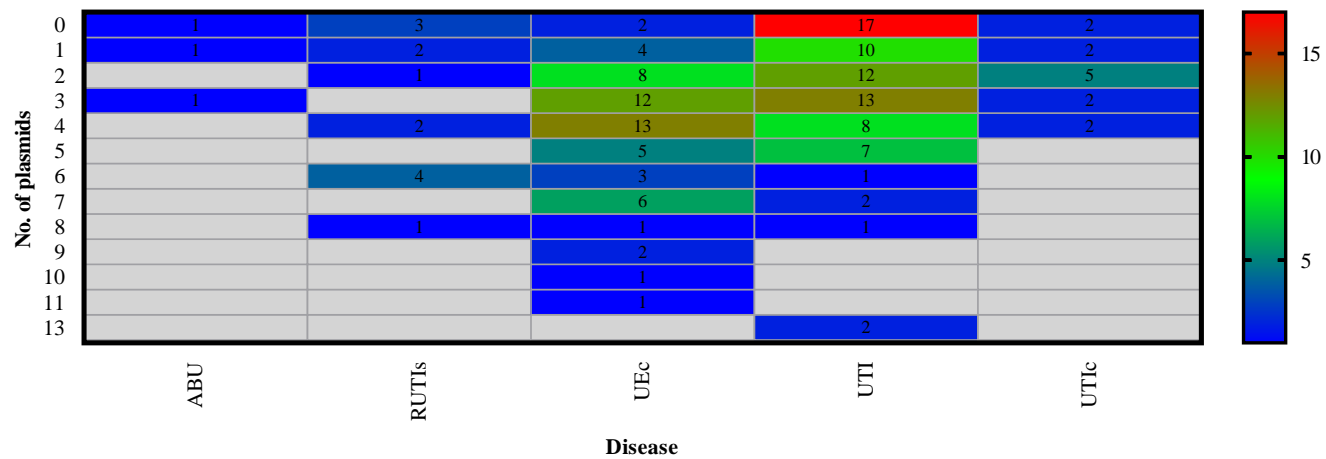
A)

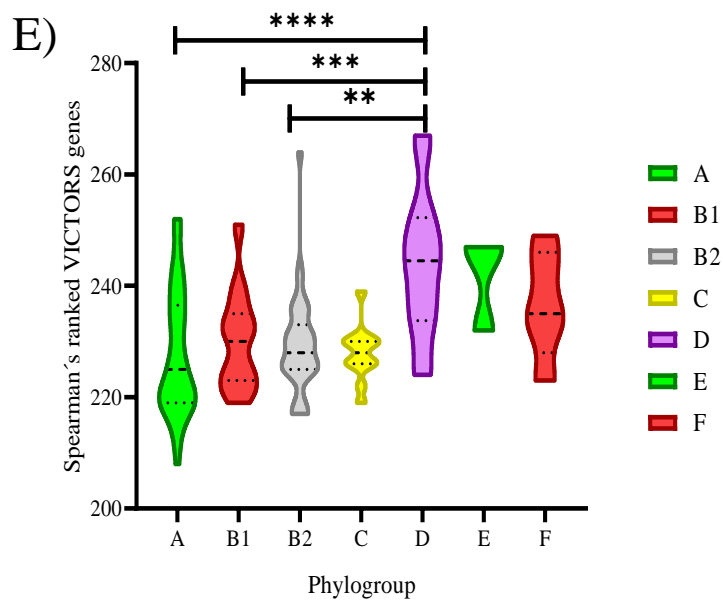
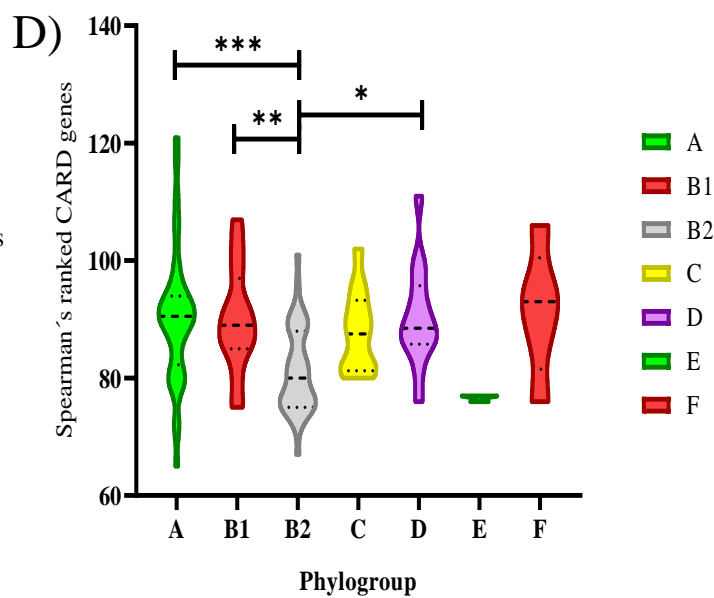
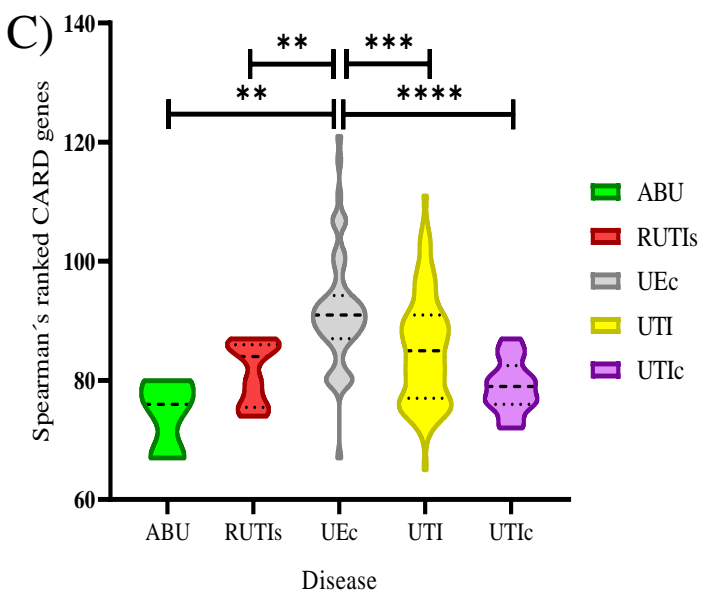
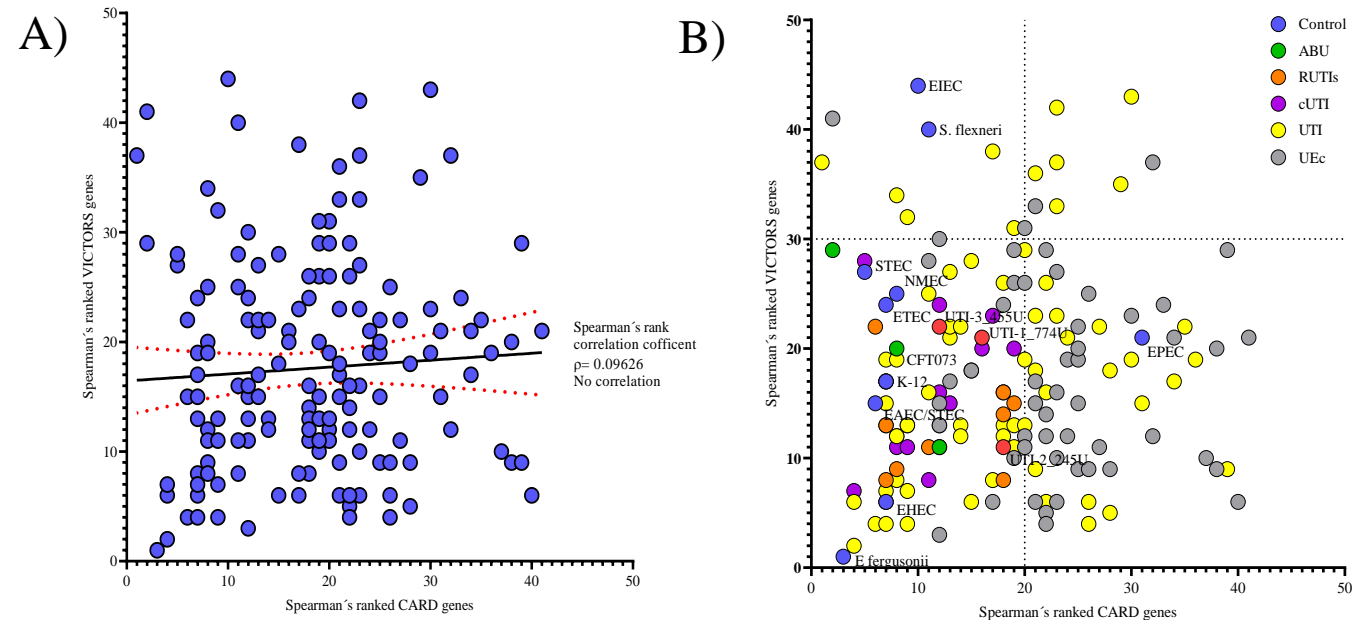


B)



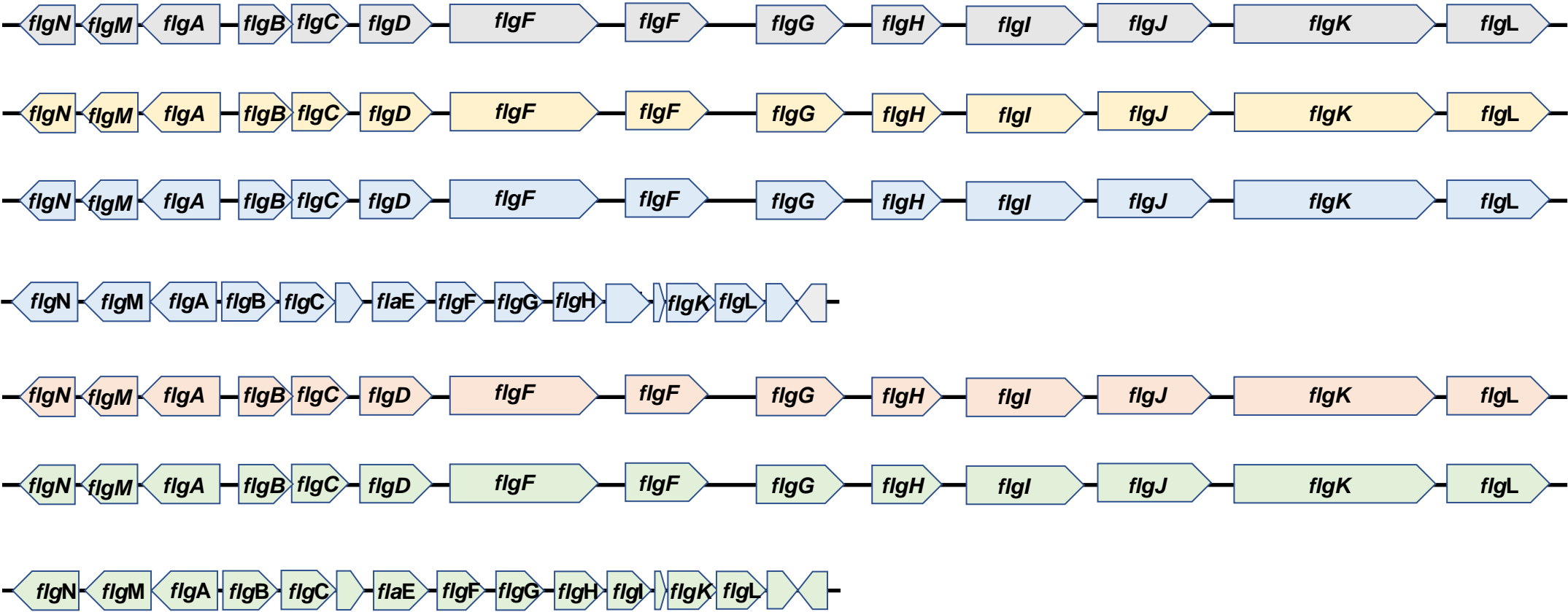
C)





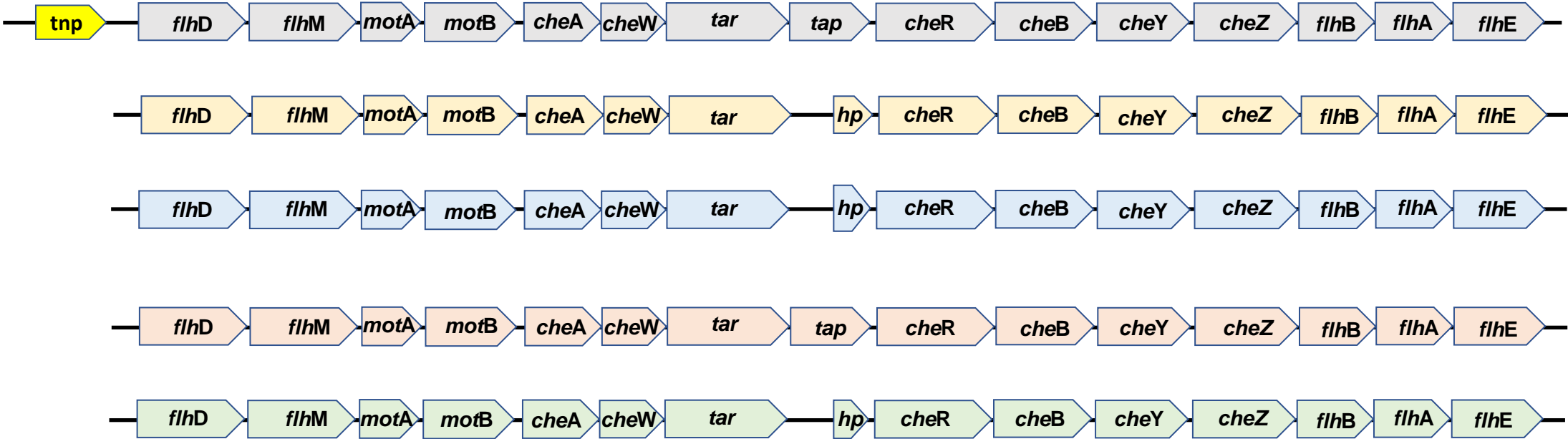
- W3110
- CFT073
- UTI-1
- UTI-2
- UTI-3

flg



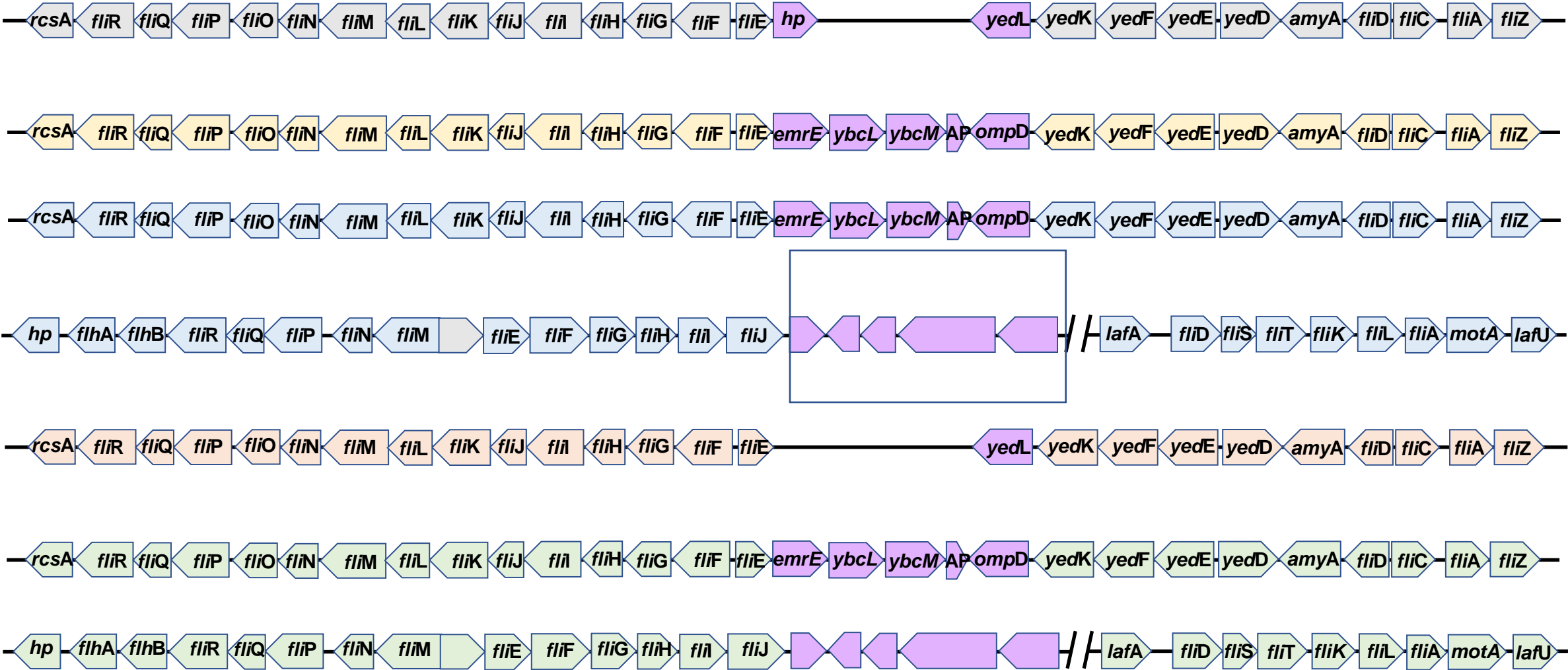
- W3110
- CFT073
- UTI-1
- UTI-2
- UTI-3

flh



- W3110
- CFT073
- UTI-1
- UTI-2
- UTI-3

fli



Phages

Serial dilutions

T4

O21

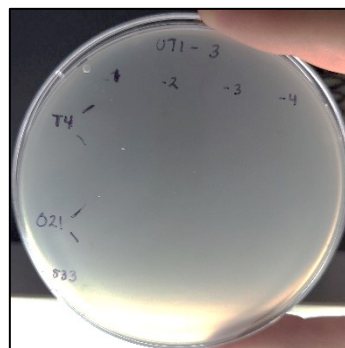
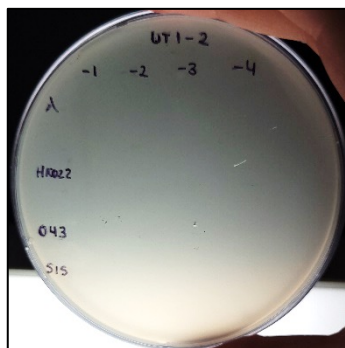
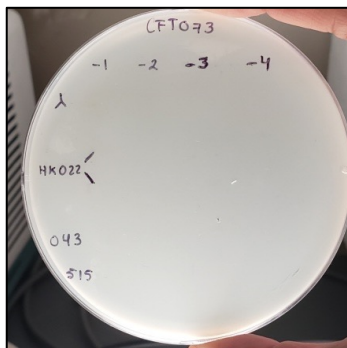
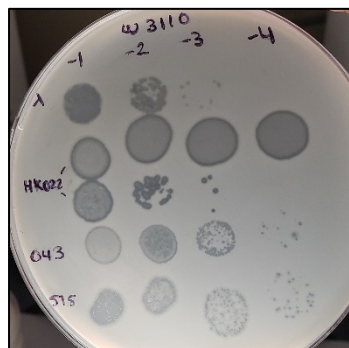
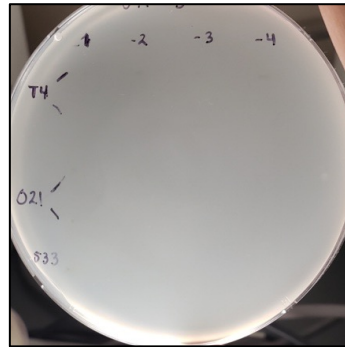
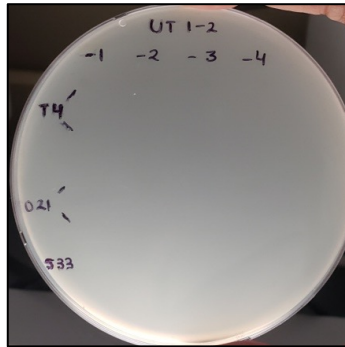
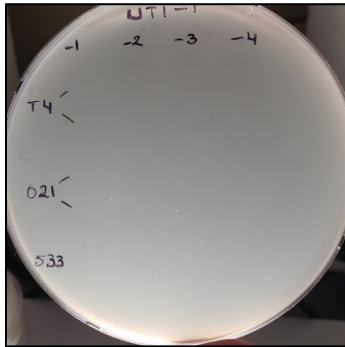
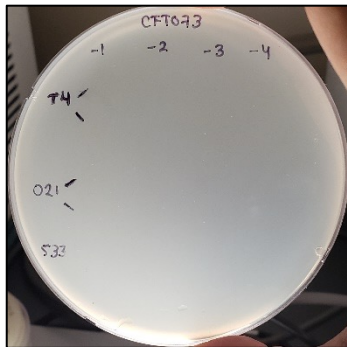
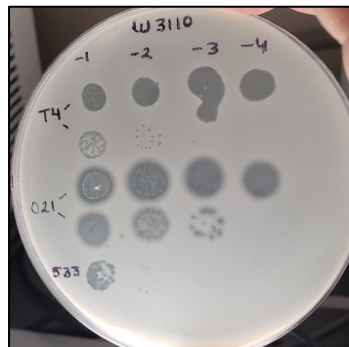
533

λ

HK022

O43

515



W3110

CFT073

UTI-1_774U

UTI-2_245U

UTI-3_455U

Bacteriophages sensitivity