

Supplementary Material

Identification of novel combination treatment strategy in clear cell renal cell carcinoma stem cells with shikonin and ipilimumab

Chen Lyu¹, Birgit Stadlbauer^{1,2}, Lili Wang^{1,3}, Alexander Buchner^{1,2}, Heike Pohla^{1,2*}

¹Tumor Immunology Laboratory, LIFE Center, LMU Klinikum, University Munich, Germany

²Department of Urology, LMU Klinikum, University Munich, Germany

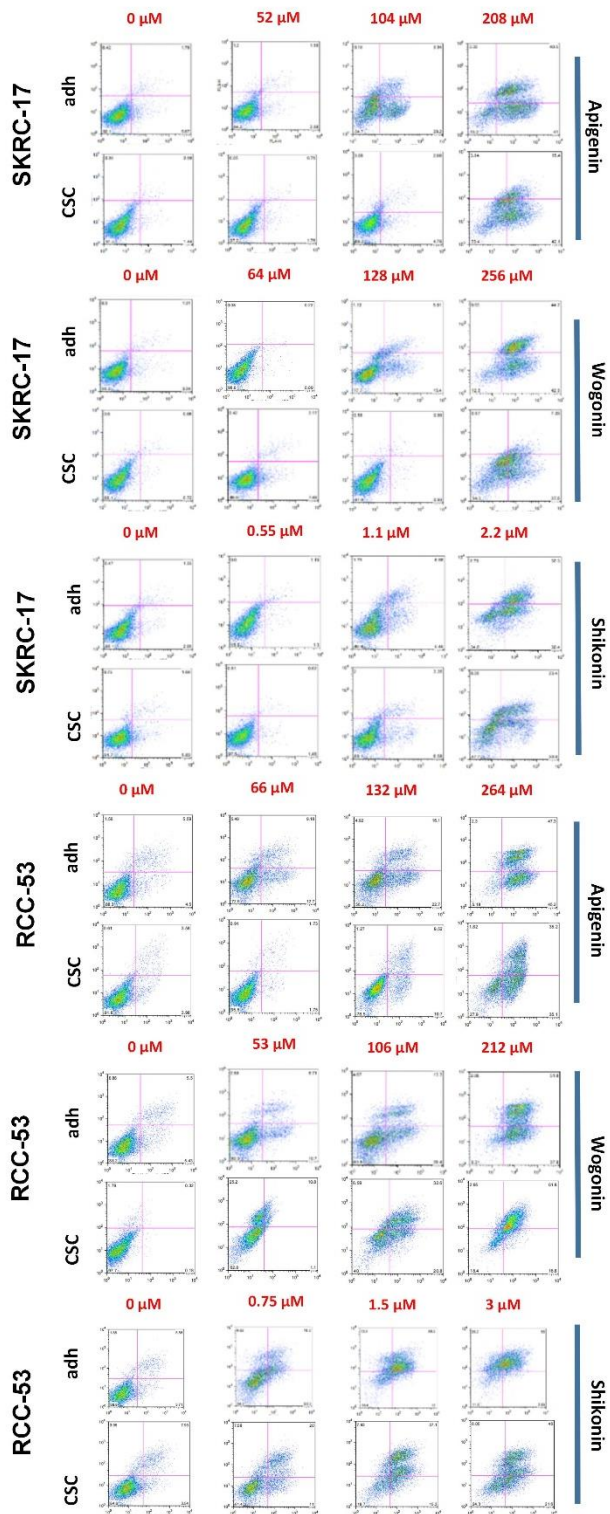
³Department of Radiology, First Affiliated Hospital, Zhejiang University School of Medicine, Hangzhou, China

*** Correspondence:**

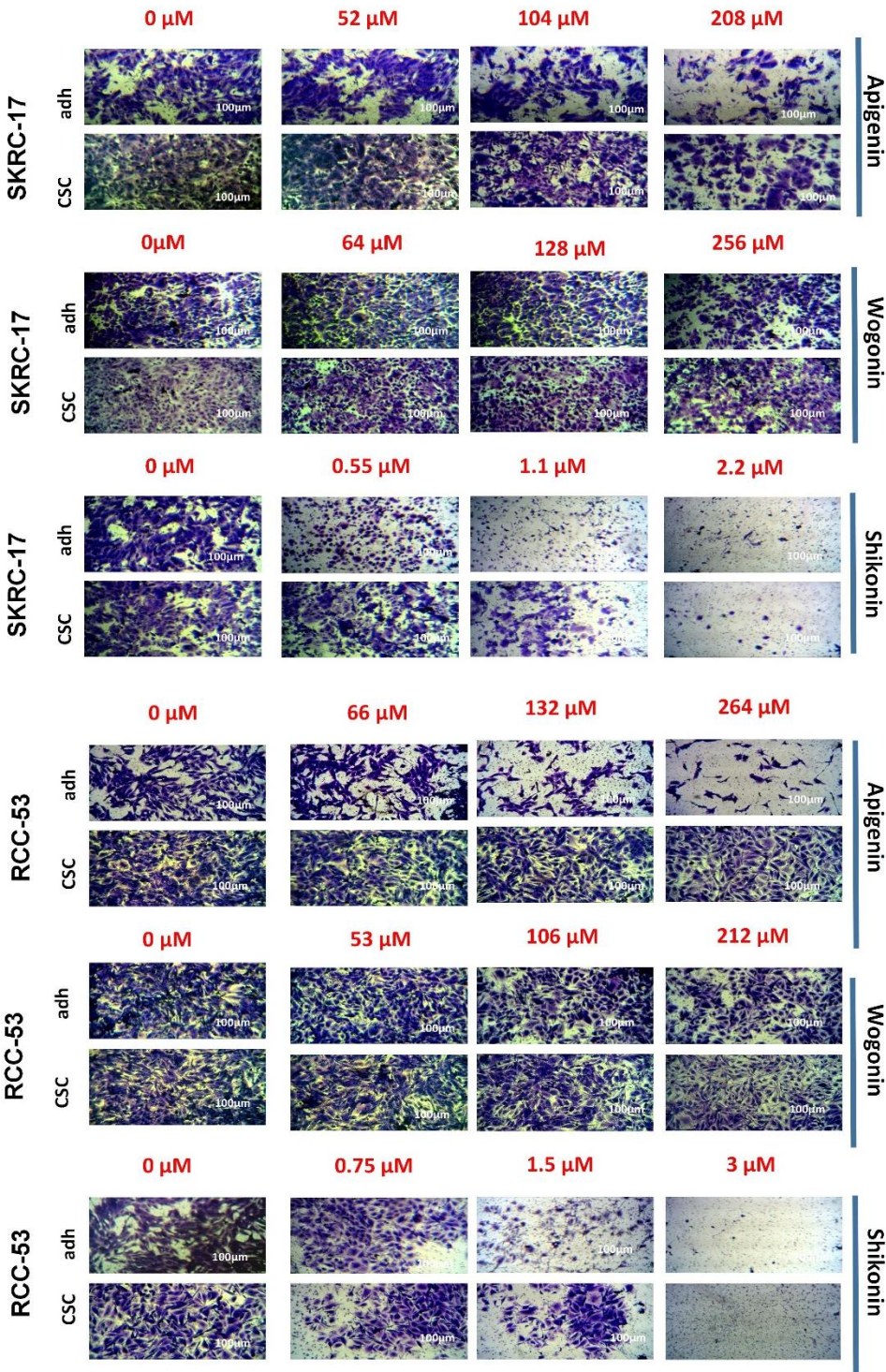
Heike Pohla

heike.pohla@med.uni-muenchen.de

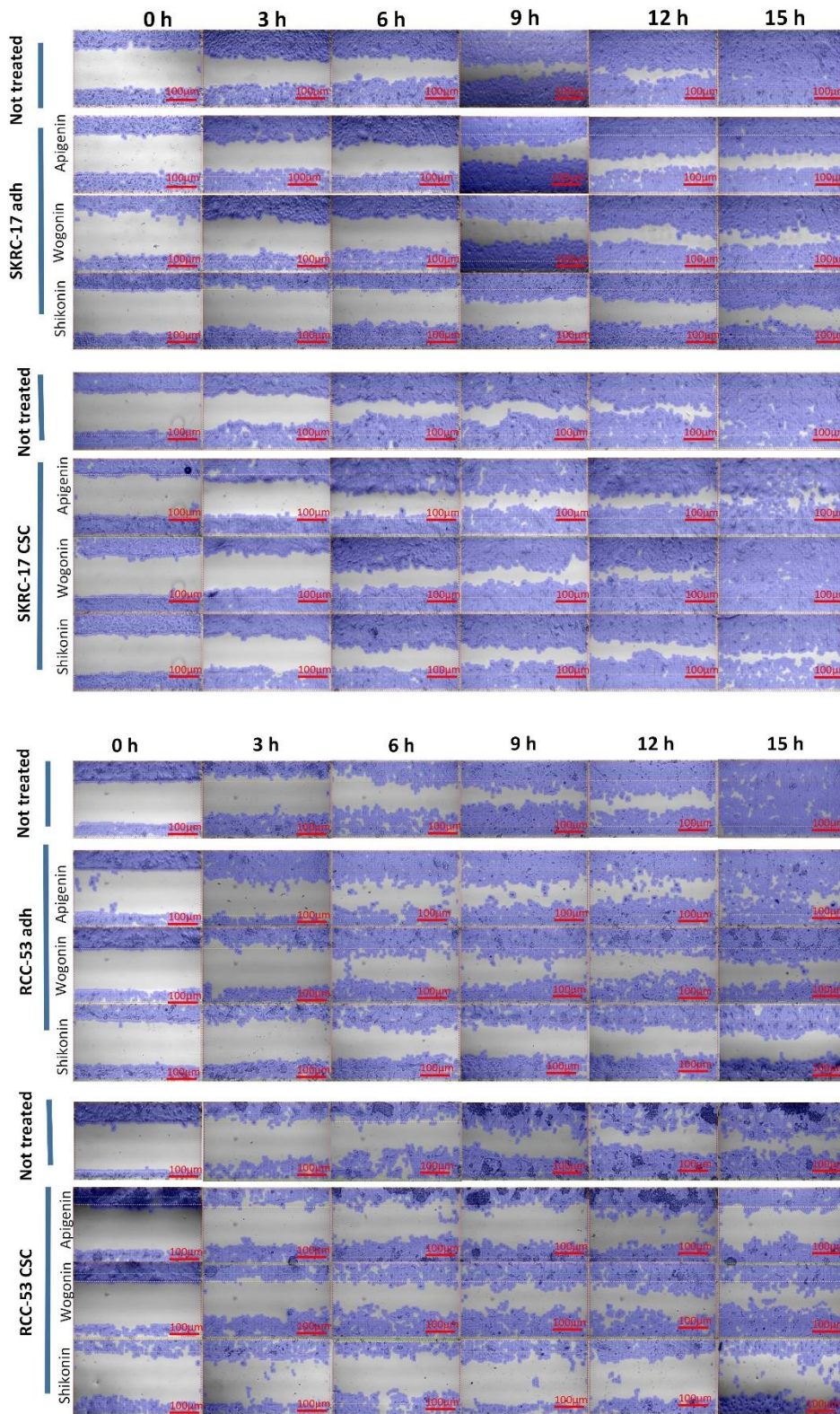
Supplementary Figures



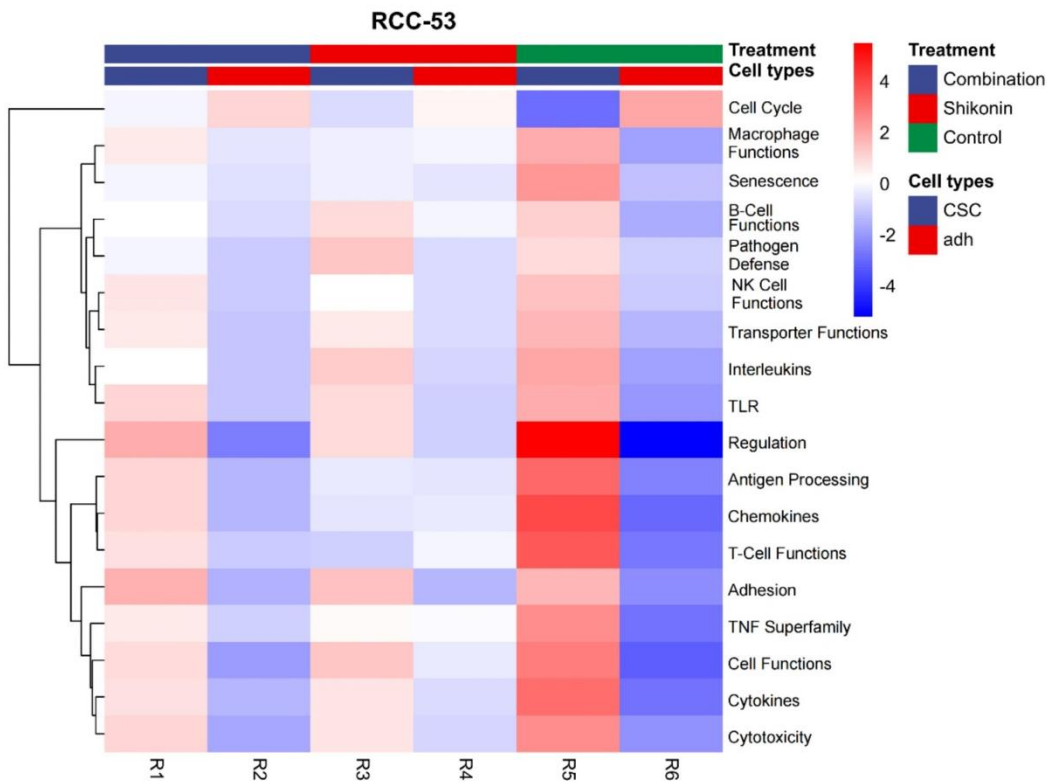
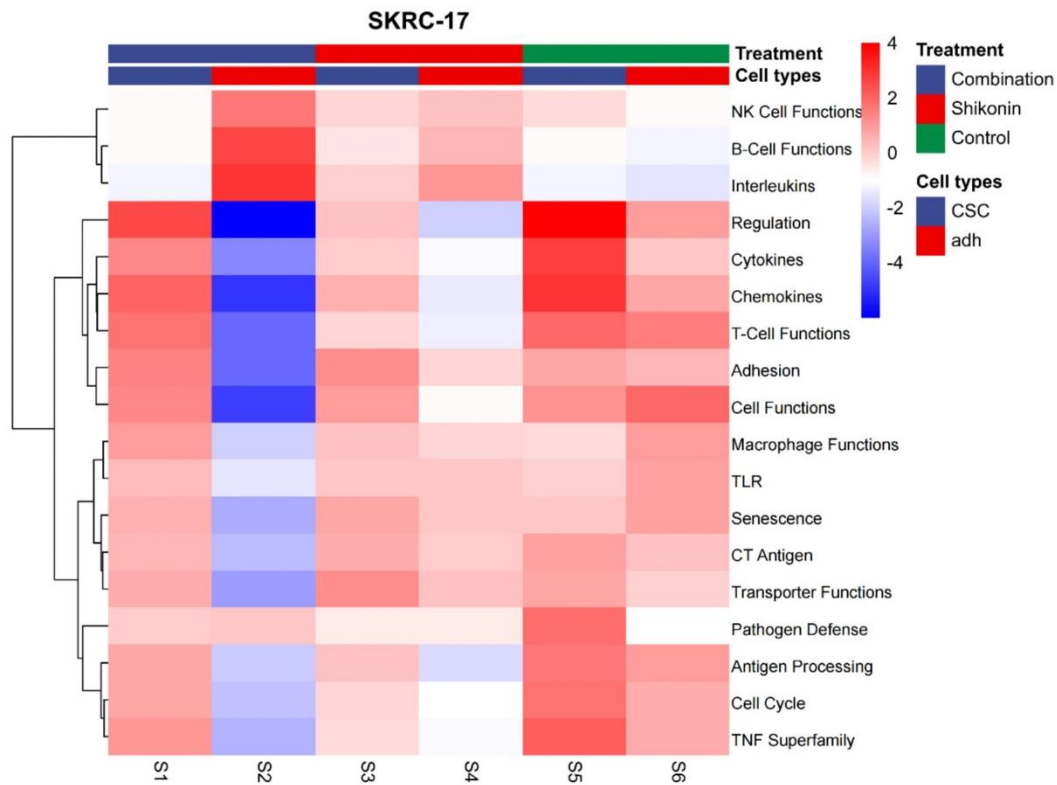
Supplementary Figure S1. Apoptosis assay. SKRC-17 adherent cell, SKRC-17 CSCs, RCC-53 adherent cells and RCC-53 CSCs were treated with apigenin, wogonin, and shikonin.



Supplementary Figure S2. Invasion assay. Photos were taken at the magnification of 40x and the cells were counted (three fields per insert; Fiji ImageJ software).



Supplementary Figure S3. Migration assay. Photos were taken under the microscope at different time points at the magnification of 40× (Bresser GmbH DE-46414 Rhede Germany).



Supplementary Figure S4. Heatmap of the differentially expressed pathways. Between CSCs and adherent cells, groups were treated with or without shikonin or with the combination shikonin plus ipilimumab (NanoString analysis).