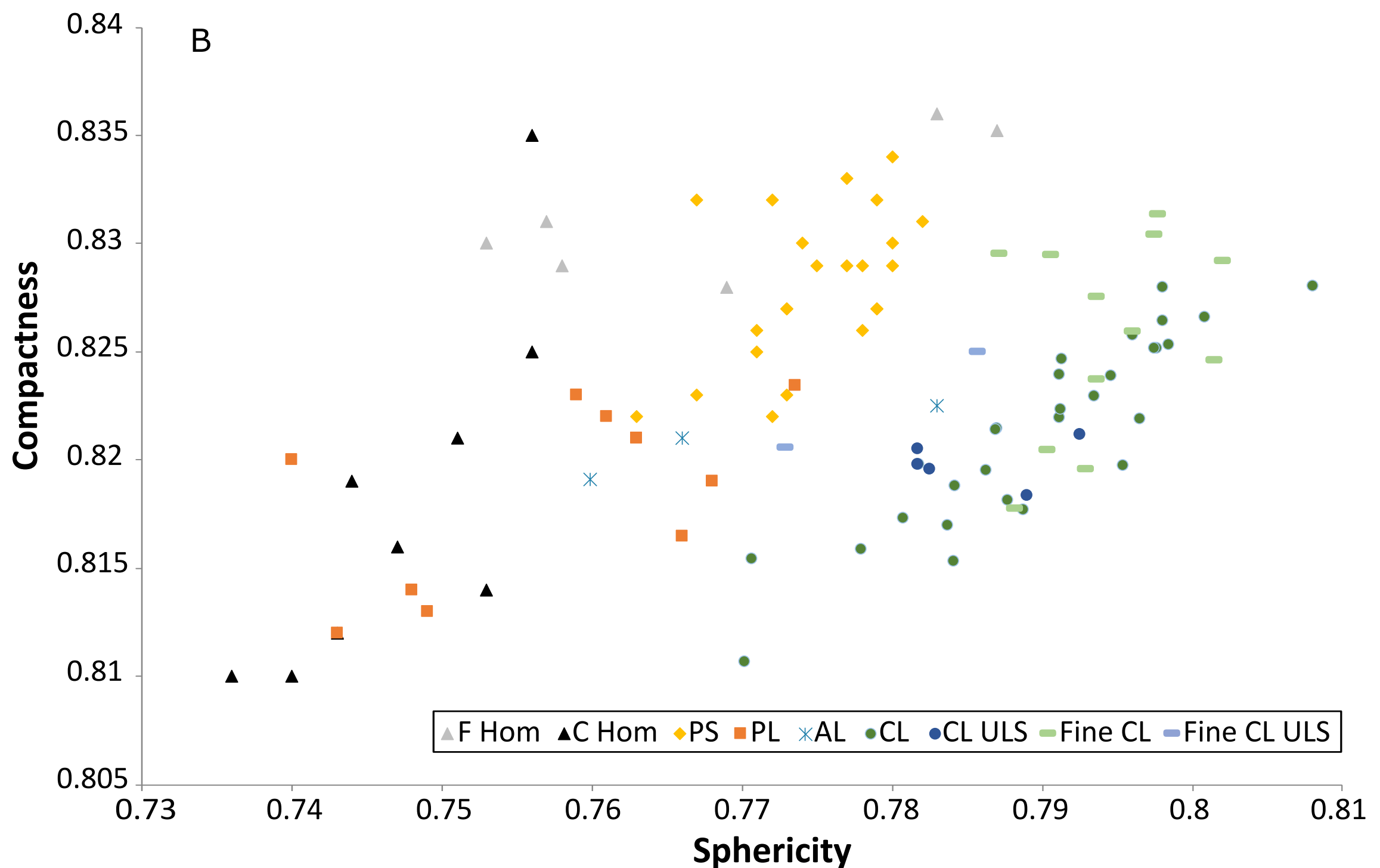
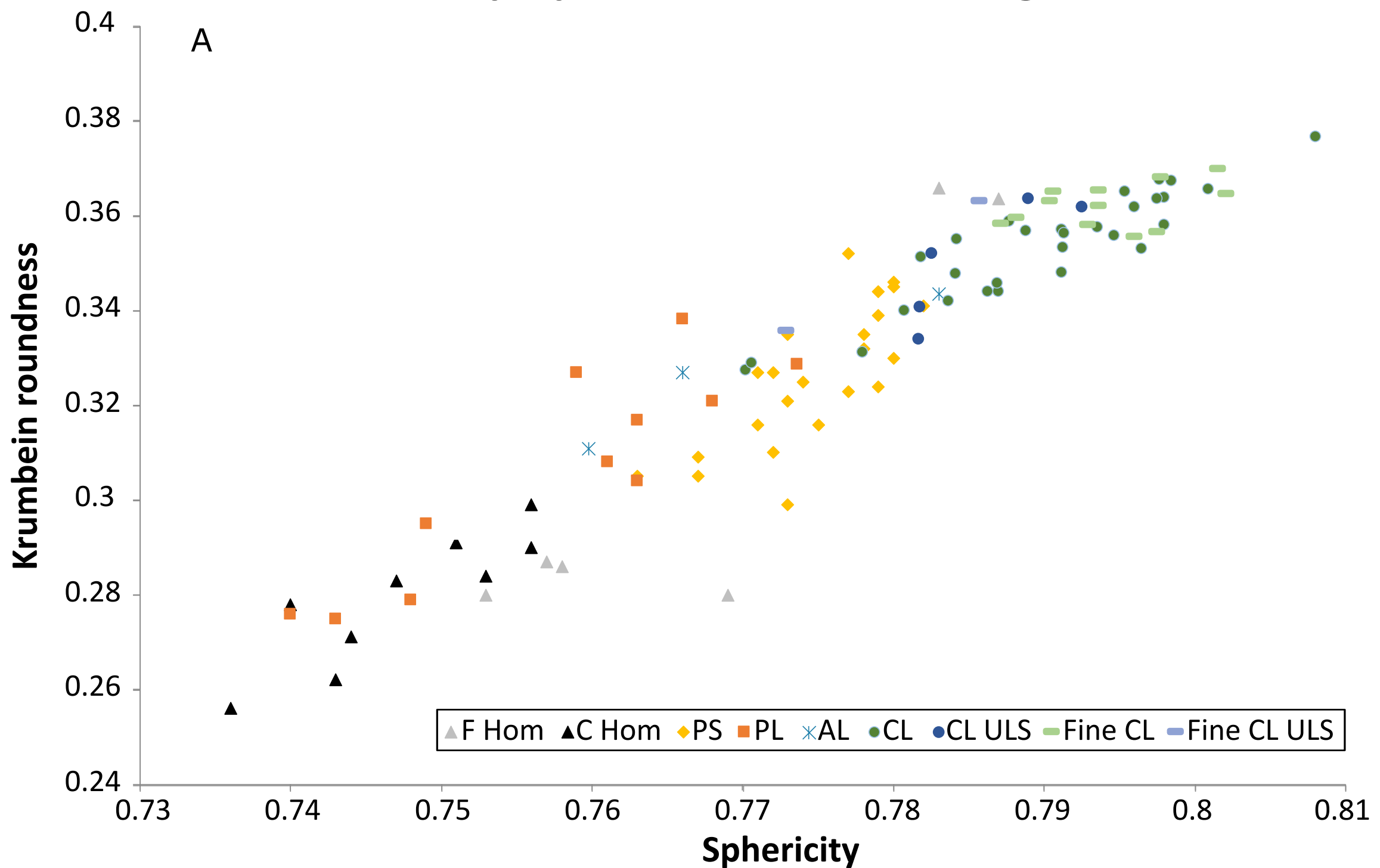


# Mean shape parameters for lithologies



Supplementary figure 3 showing mean shape parameter values of A) sphericity and Krumbein roundness and B) sphericity of and compactness as a function of sample lithofacies as outlined in table 1. Lithofacies nomenclature follows figure 4. Most lithofacies show distinct distributions, which correlate with the shape characteristics of the dominant grain size (figures 4, 7, and 9). The planar bedded (PL) and fine homogeneous (F Hom) lithofacies show two separate distributions in line with both lithofacies showing two dominant size modes (figure 7). The poorly sorted lithofacies (PS) does not show elevated sphericity values with respect to their dominant grain size, which suggests that transport in the pyroclastic density currents did not cause significant rounding of the grains.